

WATCH FOR POSTERS HERALDING COMMUNITY CHRISTMAS FESTIVAL

"Unto Us in Bethlehem", the theme of the 19th annual Bethlehem Community Christmas Festival, to be presented this year on Dec. 11, 15 and 16, will be prominently announced by some fine posters to be displayed about the Tri-Village Area. These posters are the work of Stanley Reich, art teacher at the Delmar and Glenmont elementary schools and are made available through the co-operation of George Bonacker and Mrs. Grace Erskson, principals of these schools.

Mr. Reich's professional contribution to the festival, the big community event of the year, is typical of the dedicated effort of some 600 adults and youths of the community who participate in the planning, support and performance of the program.

LEGION AUXILIARIES BRING CHRISTMAS JOY TO HOSPITAL

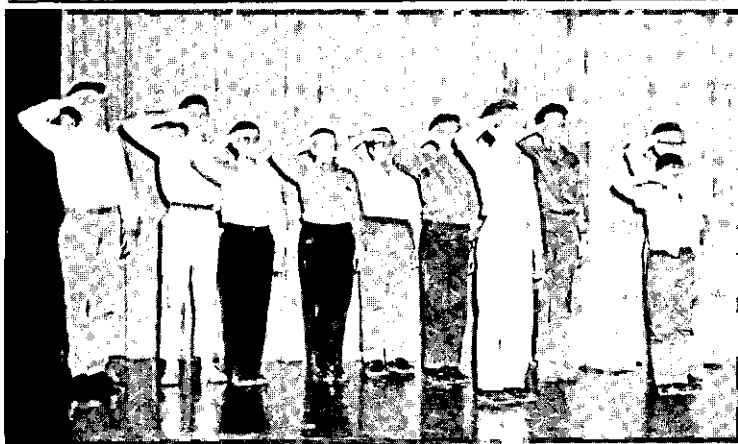
Have you been wondering how you'd ever manage to get all your Christmas gift shopping, wrapping and mailing finished on time? This problem has been solved in a wonderful way for over 1,000 World War I, World War II and Korean War veterans in the huge Veterans Administration Hospital in Albany.

These hospitalized men and women can arrange to have carefully selected gifts sent to their wives, children, mothers, fathers, brothers and sisters — free of charge, courtesy of American Legion Auxiliary units in Albany, Columbia, Greene, Rensselaer, Schoharie and Ulster counties.

Gifts, wrappings and funds for mailing will be donated by members and units of the Auxiliary in the six counties represented. The program is not predicated upon need. Not at all! Its pur-

(continued on next page)

JUNIOR HIGH'S "THIS IS THE ARMY?" IS SCHOOL'S MOST AMBITIOUS SHOW



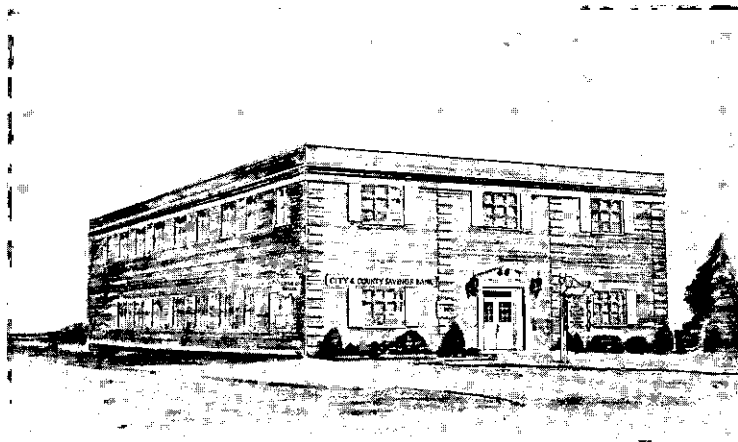
On Friday, Dec. 2, the dramatics clubs of Bethlehem Central Junior High School will present an original musical comedy satire called *This Is the Army?* The story concerns a high school football hero who enters the Army for 6 months. Before leaving, he boasts to his friends that Elvis Presley spent two years in the Army and only became a sergeant. Our hero states modestly that in 6 months he will be a lieutenant. How he accomplishes this unlikely feat is revealed in a fast-moving two-act, 12-scene musical.

The play was written by Richard Feldman, director of dramatics at BCHS. Leading roles will be played by Lee Beauregard, Dana Berry, Gerald Herman, Deborah Adler, Paul Contento, Donna Yeomans, Marcia MacHarg, Robert Lyons, Mark Laynor, Michael Doyle, Charles Weissman and Joel Richman.

Other members of the cast include Fred Lynk, Don York, Theodore Sherman, Stephen Laurie, Bruce Bonacker, Philip Rice, Joseph Hunting, Janet McCormick, Elaine Calisto, Judy Blanchard, Patricia Brunner, Nancy Alford, Carolyn Alexander, Patricia Clark, Barbara Bradt, Suzanne Flandreau, Peggy Jantschi, Karen Mullen-neaux, Susan Smith, Cressy Starkweather, Andrea Thomas, Nancy Verch, Susan Wrigley, Georgia Kern, Kathleen Taylor, Nancy Collis, Cheryl Morrow and Julie Reichert.

Mr. Feldman is director and choreographer with Steven Canders as his assistant. Music will be provided by Jean Thomas and Ruth Rothschild on the pianos and Kenneth O'Brien on the drums. Blanche Berkman is production coordinator and the make-up and costume committee is headed by Carol Brown

(continued on next page)



CITY & COUNTY SAVINGS BANK BRANCH PLANNED FOR ELSMERE

William G. Livingston, president of the City & County Savings Bank, Albany has announced that full approval has now been received for opening a branch office in Elsmere across from the Delaware Plaza.

The Federal Deposit Insurance Corporation, of which the bank is a member, gave its approval in a letter received last week. The New York State Banking Department had approved the bank's application on Nov. 16.

According to Mr. Livingston, the bank will now go ahead with remodeling and furnishing the new offices on the ground floor of the Normanside Realty

Building at 163 Delaware Ave., Elsmere.

The branch, (see architect's drawing above) with an ample parking area adjoining, drive-in teller's window and all modern appointments is scheduled to open early in the spring of 1961. The location was chosen to serve residents of the Tri-Village area of Delmar, Elsmere and Slingerlands, and the Delaware-Second Avenue section of Albany.

V.F.W. POST PLANS ROAST BEEF DINNER ON DEC. 3

Bethlehem Memorial Post #3185 V.F.W., 404 Delaware Ave., Delmar, will hold its last

(continued on page 3)

Is your MR. DO-IT-YOURSELF falling down on the job? Make a list - minor plumbing, mechanical carpentry, electrical projects - let's discuss it!

Tri-Village Fix-it Service
HE 9-1721

(JR. HIGH MUSICAL)

and Judy Polan. Lights, sound and staging will be supervised by Richmond Young, William Ehrke, David Leese and Peter Applebee. Approximately 100

students are working on the production which is the most ambitious project ever undertaken by the junior high dramatic groups.

Faculty members assisting Mr. Feldman are Mrs. Shirley Cummings, Mrs. Evelyn Sanders, Mrs. Ann Clausen, Mrs. Magdalene York. Two performances of *This is the Army?* will be given on Dec. 2; one at an afternoon school assembly and

the other at 8:00 P.M. for the general public. Admission is free.

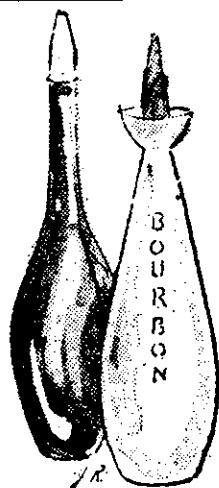
[We have seen a couple of Dick Feldman's productions and have marveled at the perfect timing, rhythm and enthusiasm he gets from what audiences almost forget is a cast of junior high school kids.]

(AUXILIARIES PLAY SANTA)

pose is simply to make Christmas a happy, worry-free time for these hospital patients who want to remember their families but can't go shopping.

So on Dec. 7 and 8, Auxiliary volunteers will go to the bedside of each patient to make out gift enclosure cards and parcel post labels. On Dec. 10, a gift shop will be set up in the Recreation Room on the third floor of the hospital. At 10 A.M. on Dec. 12, Dr. Richard B. Bean, Hospital manager, will cut a ribbon to signal the official opening of the American Legion Auxiliary Gift Shop.

Patients may visit the shop on Dec. 12 and 13; carts laden with gifts will be rolled by vol-



the **H**ouse of
Scandinavian **D**esign

Decanters

by Raymor

Glass decanters pick up the color trend found in contemporary decor. \$5.00 ea.

open every evening

Junco's Stone Ends, 9W and Corning Hill

**FOWLERS
LIQUOR
STORE**

SEE ERNIE,
GEORGE OR
HARRY

for better
spirits

Parking right
in front
of store.



HE 9-2613

**JOIN
1961
CHRISTMAS
CLUB
NOW!**

make santa's
job a little
easier this
coming year

Member Federal Deposit Insurance Corporation
Open Thursday until 8 P. M.

**HOME
SAVINGS
BANK**

UPTOWN
77 CENTRAL AVE.

Your
Signs For
Savings

DOWNTOWN

**HOME
SAVINGS BANK**

OPEN THURSDAY EVENINGS

11 NORTH PEARL ST.
ALBANY, N. Y.

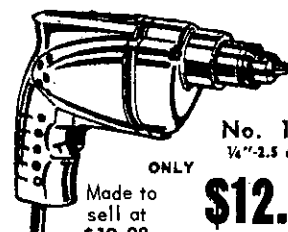
Bill DING Says

**JUST THE THING FOR
DAD'S CHRISTMAS GIFT!**

THE NEW



DRIVE-ALL-DRILL



No. 1040
1/4"-2.5 amp.

ONLY

Made to
sell at
\$19.98

\$12.50

Now—a husky full-powered drill at a new low cost! Built to take rugged handling, this new drill tackles the toughest drilling jobs in wood or steel. It drives a full line of matched, Quik-Change Attachments — a complete 14-tool power workshop!

Open Saturday Till Noon

Delmar
LUMBER & BUILDERS' SUPPLY, INC.

HE 9-9968 WE DELIVER
340 DELAWARE Ave. DELMAR, N.Y.

unteers to the bedsides of patients who are unable to leave their beds, so that they may make their selections.

Chairman of this Tenth Annual Christmas Gift Shop program is Mrs. William F. Ilgen, Albany. Mrs. Herbert Hafley, Delmar, is co-chairman. Both ladies extend a cordial invitation to the public to see the attractive display of gifts at the Hospital on Sunday afternoon, Dec. 11.

DAY OF RECOLLECTION FOR ST. THOMAS YOUTH

The Catholic Youth Council of St. Thomas' parish, Delmar has announced a Day of Recollection for the parish youth in the 11th and 12th grades. It is Dec. 4 from 2:00 to 6:00 P.M. and will be conducted by Reverend Thomas Phelan, Newman Club Director of R.P.I. and former instructor at Catholic Central High School in Troy. Supervision of the Day's program will be handled by Dr. Theodore S. Beecher and Thomas Preston, adult sponsors for the Council.

MUSICALE / CHORALE AT SLINGERLANDS SCHOOL

A musical and choral speaking program will be presented, by Mrs. Bates' third grade and Mrs. Volk's fourth grade, at Slingerlands Elementary School on December 13, at 8:00 P.M. It will consist of songs from the United States, South America, France and England, as well as the traditional carols, sung in unison and two parts. A group of selected poems will be spoken by the verse choir.

ken by the verse choir.

Parents and friends are cordially invited to attend.

(V.F.W. DINNER)

roast beef dinner of the year on Saturday, Dec. 3, from 5:30 to 8:30 P.M. Adults, \$2; children, \$1.

All friends and comrades of the Post are cordially invited to attend this gala event. "The more the merrier!" says our correspondent.



Those special names
on your list deserve
the best at
CHRISTMAS

TUPPERWARE
VACUUM SEALED CANNISTERS

The gift that keeps on giving...

QUALITY
BEAUTY • UTILITY
LUCY E. CONTENTO,
HE 9-2479

looking for ideas for
CHRISTMAS
browse around first at

D. Le-Wanda
JEWELRY
DELAWARE PLAZA

INSPIRE LOYALTY,

confidence and fullest co-
operation among your em-
ployees by setting up a
PENSION TRUST
for their security. Get
details today from

HE 9-4581

**BUTLER and
BROWN, Inc.**

244 DELAWARE AVENUE
DELMAR, NEW YORK

FREE!

at

TOLL GATE PHARMACY

SLINGERLANDS-REAR OF
POST OFFICE

HOURS: DAILY - 9 - 9:30
SUN. - 9 - 1:30

FREE DELIVERY

PHONE: HE 9-3135

CHILDREN'S
**25¢ COLORING
BOOK**

For each child
accompanied by
an adult

Support your local pharmacy
for your emergencies and
everyday needs.

The Spotlight is published every Thursday, by Spotlight, Inc., 154 Delaware Ave., Delmar, N.Y., Robert G. King, publisher. Deadline for news is Thursday afternoon, one week preceding publication; deadline for display and classified advertisements is Friday afternoon

'EXPECT

A

MASTERPIECE

WHEN
YOU

Come in and browse
around and receive
a **FREE** ceramic
hand made hand
painted ash tray made
of Delmar clay found on
the premises and fired to 2000% in
our own kilns. The signed inscription reads: Driftwood-Delmar-60

DRIFTWOOD ARTS & CRAFTS INC.

LOCATED IN THE DRIFTWOOD BUILDING
PLEASE USE THE ENTRANCE AROUND TO THE SIDE. GIFT AND DECORATING
SHOP OWNED AND OPERATED BY FRAN KLETT. HE 9-5537

MANUFACTURERS • IMPORTERS • REPRESENTATIVES

Where's
Ken?



TRI-VILLAGERS...

did you know that
KEN GALLUP
(master auto mechanic)
formerly of Studler's
garage is now located at

CRAILO MOTORS

East Greenbush

drop over and see him.

**WHIPPER SNIPPERS MEET,
INSTALL OFFICERS**

At the last meeting of the Whipper Snippers, Nov. 17, Mrs. Donaldson was present for the installation of officers. The

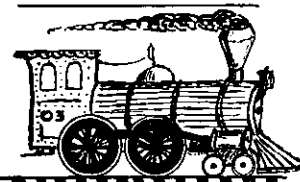
new president is Chari Jones; vice-president is Linda Williams; secretary, Paulette Zitko; treasurer, Diana Paepke; song and recreation leader, Pinky Hazelton; and news reporter,

Jeanne Thomas.

At this last meeting the girls discussed projects for the year and decided to sing Christmas carols on Dec. 13, at the Veterans Hospital. The next meeting will be on December 1, at the home of Chari Jones.

THE SPOTLIGHT

Leslie Glenck and Mrs. Alfred Basch. New members and guests are invited.

**RAILROADIANA AT
CITY & COUNTY**

The Community Room of the City & County Savings Bank, 100 State St., Albany, is currently showing an exhibit called "Railroadiana — Story of American Railroads" which will be on display until Dec. 9.

Sponsored by the Railroad Community Committee of Eastern New York, the show features model railroads, historical data, etc. If earlier attractions at the Community Room are any criterion, this should be well worth seeing.

**DELMAR EVENING UNIT
PLANS CHRISTMAS PARTY**

The Delmar Evening Home Demonstration Unit will hold its annual Christmas party on Tuesday, Dec. 6, in the Delmar Grade School.

Miss Suzanne Beers, Assistant County Home Demonstration Agent, will have a sweater kit and show how to decorate basic sweaters. Christmas handwork will also be displayed.

Refreshments will be served by "Co" Parser, assisted by Mrs. Park Darrow, Mrs. Jack Morgan, Miss Ellen Parser, Mrs.

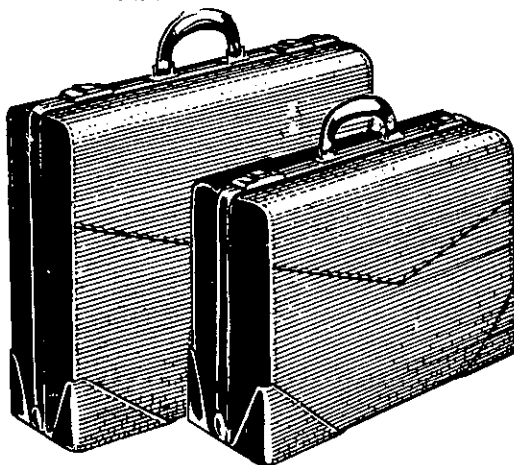
**give
LUGGAGE**

**...for
Christmas**

Ready to go! See our
holiday collection of handsome
new luggage for MEN ...

2 SUITERS
from \$19.95
COMPANIONS
from \$15.95

• ONE SUITER • 3 SUITERS • CLUB BAGS
ALL TOP GRAIN



WOMENS' LUGGAGE all styles,
colors, materials from \$9.95

OPEN 9 to 9 UNTIL CHRISTMAS
MON. thru SAT.

**"GIFTS IN LEATHER" from
MAGIN'S**

Since 1872

222 WASHINGTON AVE.

Phone HO 2-1371

**FAMOUS CUSTOM SILVER POLISH!**

easy to use • polishes as it washes • no fuss or muss
Used by America's First Families for three generations. Hagerty's produces a rich sheen and lustre comparable to the well-known "butler's finish." Foam carries away tarnish and stain—leaves silver and hands spotlessly clean. Mild, safe ... no strong abrasives, chemicals or offensive odor. Try Hagerty's and see the big difference! Just \$3.95 quart; \$1.00—6 ounces. Order yours today!

Adams Jewelers
58 NO. PEARL ST. ALBANY

PHONE HO 3-3278
HO 3-3279

FREE DELIVERY
(\$5.00 minimum order)

BLUE CROSS-BLUE SHIELD PROTECTION FOR SENIOR CITIZENS

A new medical plan covering hospitalization costs and surgeons' fees for persons over 65 years has just been announced by the Blue Cross, Blue Shield Organization. Details of this plan will be explained at the meeting of Bethlehem Senior Citizens at the Junior High School on Dec. 1 beginning at 7:30 P.M. Frederick J. Bond of the Blue Cross will speak. All citizens of the Bethlehem area who are over 65 and interested in this opportunity to secure information on health and accident coverage are welcome to attend the meeting.

FIRST COMMERCIAL USE OF DELMAR CLAY, AT DRIFTWOOD WORKSHOP

For the first time in history (we believe) Delmar clay has been used commercially in the manufacture of pottery. Adding another "first" to its record of innovations, Driftwood Arts & Crafts, Inc., has made a number of unusual ash trays from native clay, found right on the premises and fired at 2000°F. in the shop's own kilns.

Delmar clay is far above average, we are told, and the results of our local potters' experiment very interesting. This original issue consists of 500 ash trays which are being offered as gifts — one to each visitor to the shop which is on Delaware Ave., just beyond the Senior High School (same building as Connoisseur Gallery).

These ash trays should make worthwhile souvenirs, as the signed inscription on the reverse of each reads "Driftwood — Delmar — '60."



*Sign up as Santa's helper . . .
Join our new*

Christmas Club

Christmas is a time when our hearts are bigger than our pocketbooks. You can always use extra cash. Make sure you have it next year by joining our Christmas Club now. Start saving a convenient amount each week and have a nice, big Christmas Club check next November. Then, you'll have the fun of gift shopping early without piling up bills. Every member of your family should join National Commercial's Christmas Club. We have plans to fit all budgets.

CHRISTMAS CLUB PLANS

50 weekly deposits of:	bring next November
\$ 1 _____	\$ 50
2 _____	100
3 _____	150
5 _____	250
10 _____	500

Extra Banking Hours

DELMAR OFFICE, 343 Delaware Ave.
Extra Hours — Fridays 6 to 8 P.M.

ELSMERE OFFICE, Delaware Plaza
Walk-up Teller Window Open from 8:15 A.M. daily



NATIONAL COMMERCIAL BANK AND TRUST COMPANY

MEMBER FEDERAL DEPOSIT INSURANCE CORPORATION

Complete Banking Services through 81 offices in Northeastern New York State

125000 BOOKS
for
CHRISTMAS

open nights until 11 PM

**PLAZA BOOK
SHOP**

380 Broadway, Albany

SHOP ALBANY PUBLIC MARKETS for PRE-CHRISTMAS



VALUES

**ALBANY
PUBLIC
MARKETS**

**Delaware Avenue
Delmar**

**OPEN DAILY
9 to 9**

SATURDAYS 9 to 6

IF YOU ARE NERVOUS AS A MONKEY

Jittery? We have the cure for that! Come in and dawdle over a delicious dinner. Relax over a bowl of soup fit for the gods and pamper your inner self with a wide choice of lusciously blended dishes. You'll find our service perfect...our prices most moderate.

THE NEW

**Miso
Glenmont Diner**

ROUTE 9W

NEAR TOP OF CORNING HILL

ELSMERE EVENING UNIT TO MEET DEC. 7

The Elsmere Evening Unit of the Home Demonstration Department will hold a meeting on December 7 at 8 P.M. in the Elsmere Grade School. Mrs. William Delaney and Mrs. Roger Kallop will conduct a work meeting including instructions for making aprons, ties, and small sewing projects. Mrs. Eugene Lewis will direct a Christmas grab bag party.

ADAMS POST AUXILIARY COMMITTEE NAMED TO PLAN CHRISTMAS PARTY

Mrs. Esther Cooke, president of the Nathaniel Adams Blanchard American Legion Auxiliary No. 1040, has appointed the following committee to plan for the unit's Christmas party to be held Tuesday, December 20, at the post rooms in Elsmere at 6:30 P.M.: Mrs. Richard Dalton, chairman; Mrs. James Lawler, co-chairman; Mrs.

George Feiden, entertainment chairman; Mrs. Herbert Hafley, decorations chairman; Mrs. Harold Barkhuff and Mrs. Richard Lenseth, reservations.

Members and their guests are invited to attend.

WOMEN'S SOCIETY OF SO. BETHLEHEM CHURCH PLANS DEC. 7 MEETING

The December meeting of the Women's Society of Christian Service of the South Bethlehem Methodist Church will be held on Wednesday, Dec. 7, at 8:00 P.M.

A playlet entitled *Silver of the Second Best* by Elsie Duncan Yale will be presented under the direction of Mrs. Norma L. June and Mrs. Horace J. Stott.

A social hour will follow the program, with refreshments served by Mrs. Robert Mayo, Mrs. Anna K. Rowe and Mrs. Bertha Rarick. Mrs. Merrill Bogardus will lead the group in a carol sing. Devotions will be

**FOR QUALITY
AND VALUE**

BLACKSTONE CIGARS

EMPIRES 2 for 25¢

KINGS 3 for 50¢ • CORONAS 3 for 55¢

(state tax included)

'56 Cadillac \$2595
7-Passenger

'58 Cadillac \$2995
4-Door

'59 Cadillac \$3895
6 Windows, 4-Door

'56 Chrysler \$1095
Station Wagon

'58 Goliath \$995
Station Wagon

'57 Cadillac \$2495
El Dorado Seville

'56 Cadillac \$1595
4-Door

'58 Olds "98" \$1895
Holiday Coupe

'59 Cadillac \$4095
Coupe De Ville

'57 Cadillac \$2195
4-Door

'60 Cadillac \$4795
Coupe

'59 Cadillac \$4395
Fleetwood

'58 Cadillac \$3195
Fleetwood

'59 Cadillac \$4195
Convertible

OTHERS TO CHOOSE FROM—OPEN 9 TO 9

John D. Wendell, Inc.

Albany County's Only Authorized Cadillac Dealer

450 CENTRAL AVE.

IV 9-4751

led by Mrs. John Haskell.

Baskets for shut-ins will be prepared at this meeting and everyone is asked to bring something for these baskets along with a small gift to be sent to Puerto Rican children.

LITTLE LEAGUE DIRECTORS NAMED

The following local residents have been elected to serve as members of the Board of Directors of the Tri-Village Little League for 1961: John Byron, Thomas Cleary, Dr. R. Del Giacco, Walter Hollner, W. Mason Lawrence, Clement Munger, John Sestak, Louis Tucci and Charles Van Decar.

ELSMERE DAY UNIT'S CHRISTMAS MEETING

The Christmas meeting of the Elsmere Day Unit of the Albany County Home Demonstration Department will be held at St. Stephen's Church on Monday, Dec. 5 at 12:30 o'clock. Mrs. Lucien Le Maitre, chairman, will conduct the business meeting after which Mrs. William R. Vogel will relate a

Christmas story. There will be a display of Christmas decorations and each member is requested to bring an arrangement or decoration which she has made.

Hostesses for the refreshment hour will be Mrs. Carl Freudreich, Mrs. Charles Estey and Mrs. James Hoppe. Mrs. Daniel Dalrymple, vice-chairman, has announced the following new members in the unit: Mesdames DeForest Linstruth, Carl Tremmer, James Hoppe, James Spence and Charles Estey.

CHRISTMAS DECORATIONS

- Scotch Pine
- Balsam Trees
- Wreaths

- Roping
- Ornaments

VAN ALLEN FARMS

ON 9-W - FIRST FARM NORTH OF JERICO DRIVE-IN
Telephone ROger 7-9101

OPEN SUNDAY

See the State Bank Folks... First!



Put **YOUR**
money
to work...

for a dear one. May we suggest the "Gift of Thrift" for a dear one? Open a State Bank Savings Account in his or her name. It is both a thoughtful and lasting gift. See the State Bank Folks.

Remember! . . . deposits made on or before the 10th of any month, earn interest from the 1st.

Serving Northeastern New York State

State Bank of Albany

Chartered - 1803

MEMBER FEDERAL DEPOSIT INSURANCE CORPORATION



When quality
counts
you can count
on us
your

**CORNE
BEEF**
is ready

**MC CARROLL'S
SUPER MARKET**

Since 1921

**THE
CORNE BEEF
PALACE**

272 Second Ave., Albany

HO-36424

Sharlet's latham

showplace of finer furniture, on the Albany side of the circle, route 9

christmas gifts

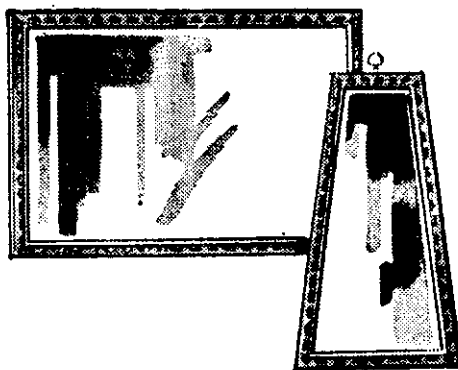
that mean so much . . . cost so little

add just the right touch!!!

**big plate glass mirrors
with gold metal frames**

Your Choice **22⁹⁵**

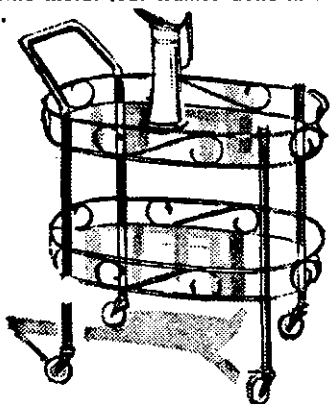
Reflected glory! Take your choice of either the large 28x40" Keystone or 22x40" rectangular mirror. Both in Pittsburgh Parallel-O-Plate glass with genuine metal leaf frames done in rich gold.



**attractive brass and glass
oval tea cart**

Only **8⁹⁵**

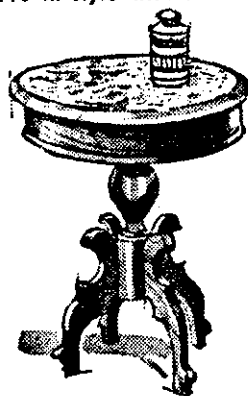
The Hostess's helper! So graceful and feminine! Brass finished legs and filigree rails, with two large oval glass shelves. Large lucite casters makes things roll along smoothly when you serve in style with this lovely tea cart.



**imported Italian marble top
mahogany cigarette tables**

Only **16⁹⁵**

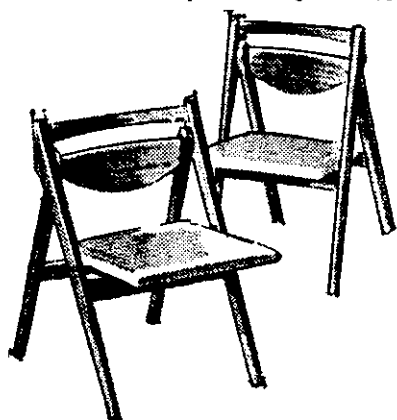
Charming accent piece! Its styling is a sure conversation starter. Superbly crafted, in beautiful hand-rubbed Honduras mahogany. Imported Italian circular marble top. 18" high, 14 1/2" diameter.



**Stakmore's comfortable
Danish folding chairs**

2 For . **19⁹⁵**
Only

A place for the crowd to sit! Stakmore has built these fine folding chairs of sturdy cabinet woods and given them a new tawny Walnut finish. Washable plastic seat covers in a choice of colors. Smart Danish styling.



Sharlet's latham

Open daily 10-9, Saturdays 'til 5

free decorator consultant service

free delivery

THE SPOTLIGHT



**BY
THE
WAY**

by Abbie Utz

This is the beginning of the Advent Season. Already the signs of Christmas are about us . . . shopping for gifts and food delicacies awakens in us the urgency of the next wonderfully busy weeks. White Christmas in our community draws more people into the spirit of the month, whilst church and school and home take on the holiday mood. . . . Even the weather should be changing — but haven't we had the grandest fall?

Speaking of changes . . . We'd like to share with our *Spotlight* readers a complete accounting of the UNICEF program graciously submitted to us this week by Carl G. Clark, secretary-treasurer of the Tri-Village Ministers Association. This group has sponsored this grand affair which has existed for four years. There were two divisions of young people of the community working under the general direction of Roy Damonte, director of Religious Education at the First Methodist Church of Delmar — from this section there were 141 children from 6 thru 12 years who collected \$250.92. These youngsters received their boxes at St. Stephen's Episcopal Church between 4-6 P.M. and returned to this church at 7 P.M. for a party. The Youth section met at

**REFRIGERATION
&
TV SERVICE**

HOUSEHOLD • COMMERCIAL
ALL MAKES • ALL MODELS
OVER 10 YRS. EXPERIENCE
VALLEY SERVICE Co.
750 DELAWARE AVE.
DELMAR, N.Y. HE 9-5537
H. N. KLETT Jr., Mgr.

the Delmar Reformed Church at 7 P.M., received their containers and returned at 8:30 for cider and donuts, and fellowship. This year 123 young people collected \$360.89. Received from Glenmont Community Church \$47.02 with 18 children and five adults collecting, plus \$9.22 after the drive was over, bringing the total to \$668.05 which was the amount sent to UNICEF. Thus, the efforts of so many who made this a success are gratefully acknowledged by the community and by this column for we are always anxious to come out with the true facts and figures. Thus for next year we'll be able to publish the exact figures with Mr. Clark's kind assistance, by the way.

Looks like the Newcomers Club of the Tri-Village will be getting the early jump on the holidays this year by having their dinner-dance, Saturday, December third, at the DeWitt. Chairman Grace Mikkelsen, (Mrs. K. Scott) of Westchester Drive, Delmar, is really keeping an air of mystery about all the special preparations for the "Snow Ball." Assisting Grace, will be Mmes. Robert Rumsey, John Wilbur, Lawrence Corcoran, Richard Trumble, Jerome O'Brien, Charles Redmond, and Marion Henry. Oh yes, according to Tresa Weinberg, the bridge group is very successful under the expert coaching of Esther Brown of Jordan Blvd. Just contact Tresa if you're a newcomer and wish to join a

new group. Thanks to B. J. Moreen, publicity chairman, whom we would know anywhere, sans chapeau. . . .

U. S. Agriculture bulletins forecast much in the way of food supplies for the rest of the 1960 season and even larger for 1961 to match the increase in population. Consumption of food per person is expected to be about the same as this year.

(continued on next page)

TOYS
SILVERSTEIN'S
83 Central Av.
Albany

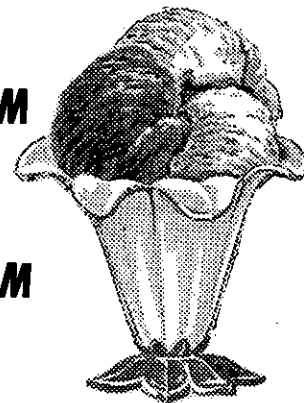
HOLIDAY SPECIALS !

PUMPKIN

ICE CREAM

EGG NOG

ICE CREAM



TOLLGATE
SLINGERLANDS

Open a Christmas Club Account Today!

Being swamped with Christmas bills with no money to pay them can certainly spoil your holiday pleasure. Why not make sure you'll have enough money next Christmas by opening a National Savings Bank Christmas Club Account today.

THE NATIONAL SAVINGS BANK
Albany, New York

DOWNTOWN: Corner of State and Pearl Streets

Open Thursday Evening until 8 P.M.

UPTOWN: Westgate Shopping Center . . . Colvin and Central Avenues

Open Friday Evening until 8 P.M.

Avis
RENT-a-CAR
LICENSEE



GET OUT . . . AND GO!

- In a Brand New Ford or Other Fine Cars
- Gas, Oil and Insurance Included

REMEMBER!

Avis 16 Watervliet
RENT-a-CAR Nr. Central
IV 9-5487



(BY THE WAY)

Average retail food prices also will be about the same. Ugh! However, we'll probably be eating more beef, veal and poultry in 1961. Beef consumption may be at an all-time high, averaging as much as 90 pounds per person. Also from this same bulletin came the release notice of

a guide on "Food and Your Weight" (HG-74) available free from the Office of Information, U. S. Dept. of Agriculture, Washington, D. C. We share this with our *Spotlight* readers, due to the ever-increasing interest in weight, diet and reducing fads. . . . It's terrific. Especially after Thanksgiving

week-end and with the Christmas season approaching us. . . . By the way, did you know that the First Thanksgiving lasted three days in the year 1621; and that 91 Indians came as guests? 'Tis true. . . .

In Delmar last weekend visiting Jack Dorr, son of Mr. and Mrs. Henry Door of Lyons Ave.,

was George Sherman, student at Poly Prep of Brooklyn. We also had a short visit with Phil O'Hara, son of Mrs. Robert O'Hara of Douglas Rd., Delmar, home for Thanksgiving from Dartmouth College. Barbara O'Hara also spent the weekend at home. She is teaching in Newton, Mass. this year. The Les

KEEP YOUR EYE ON GRANTS

Grants
KNOWN for VALUES

IF PURCHASED
SEPARATELY
ELSEWHERE
\$46.45

HO FREIGHT TRAIN SET WITH POWER PACK, SCENIC LAYOUT AND ACCESSORIES

Grants has a complete set-up for fun . . . watch the freight train circle the scenic layout . . . see the steam-type engine pull the cars then reverse to push them . . . all by remote control. Beautifully detailed from the miniature 'New York Central' locomotive to the scale model accessories and detailed 84 x 48-inch train layout. Automatic coupler and uncoupler.

Complete
19⁹⁷

"Charge-It",
1.25 weekly

LOOK WHAT YOU GET

	WORTH
Steam-type Locomotive	7.95
C & O Gondola	2.50
Santa Fe Refrigerator Car	2.50
Lehigh Valley Hopper Car	2.50
Automobile Car with cars	4.00
Special Tank Car	2.50
NY Central Work Caboose	3.00
12 Sections Curved Track	1.80
3 Sections of Straight Track	45c
Automatic Uncoupler	75c
UL approved Power Pack	7.00
16 HO accessories	1.00
12 HO Telephone Poles	.50c
34"x48" HO detailed scenic layout	10.00

TOTAL VALUE \$46.45

**DOWNTOWN
ALBANY**
65 N. Pearl St.

STUYVESANT
Western Ave. and
Fuller Road

LATHAM
Latham Corners

WESTGATE
911 Central Ave.

W. T. GRANT CO. SHOP ALL 4 STORES

Edsalls of Marlboro Rd., Delmar have gone to Granville, Ohio to visit their daughter for Thanksgiving. Norma is now Assistant Dean of Women at Dennison University. Takes us back to our college days, and visits to this same campus. . .

Good to have Ginny Winn and Dorothy Green back from their long weekend in Ironton, Ohio. They had a most successful engagement and really covered the states, Kentucky, Virginia, Washington, D. C., New Jersey and home to Delmar.

Understand Mrs. Richard Forbes and son Jeff of Kenwood Ave., Delmar had a good trip

to Canton, N. Y. and the north country for Thanksgiving and a visit with Paul and Jane Graves of Gouverneur.

Saw both Paul Petersen, home from Vermont Academy, to be with his family the Lincoln Petersens of Winne Rd., and Jim Jones of Jordan Blvd., Delmar visiting his parents the William Jones. Jim is in service, the Air Force, in the south. . . Hi ya'all.

Congratulations to the seniors at BC on their huge production. To all and the great team work plus the efforts of the directors, Mr. Henderson, Mr. Feldman, Miss Martin, etc., etc. Cheers.

pre- CHRISTMAS SPECIALS

Dress up your home for the Holidays

Open Evenings

FROM SCHENECTADY

FROM ALBANY

TO THE CARPET CENTER

FROM TROY

Phone State 5-8595

CARPET CENTER

LARGE SELECTION OF COLORS AND DESIGNS

ABOUT 1000 YARDS NORTH OF THE LATHAM CIRCLE (On Route 9)

AMOCO

The first name in Heating Oils and Gasoline

Amoco Heating Oil like Amoco Gasoline

ASSURES DIVIDENDS IN

Comfort, Economy and Cleanliness, through careful Refinement without additives.



McEnaney Service ASSURES

Low Cost, Customer Satisfaction, Twenty-four Hour Emergency Attention for all makes of Burners. Budget and Charge Accounts solicited, no interest or penalties added.

For detailed information CALL

IV 9-3266

AMOCO

McEnaney Oil Corp.

179 No. Main Ave., Albany 6, N.Y.
"Oil Heat has been proven best"



SAVE CASH & STAMPS

AT YOUR FRIENDLY. **GRAND UNION**

EMPIRE

SUPERMARKET!

fresh

READY TO COOK

FRYERS

whole chicken

27¢

lb

CUT UP 30¢

lb

DELAWARE PLAZA STORE ONLY!

DELAWARE PLAZA
OPEN til 9P.M. MONDAY thru FRIDAY
SATURDAY til 6P.M.
• PLENTY OF FREE PARKING •

GOING TO A . . .

BIRTHDAY PARTY - WEDDING - HOUSE WARMING
OR JUST TO VISIT A FRIEND?
Take a little remembrance with you

from **D Le-Wanda** YOUR JEWELER

EXPERT WATCH and CLOCK REPAIRS

Delaware Plaza Shopping Center
PHONE HE 9-9665

SHOP STORE NO. 4 WHERE THE VALUE IS MORE
AUTHORIZED DEALER FOR WALTHAM - ADMIRAL WATCHES

**Any number can play in a VW:**

An open playpen slides in the wide side doors with ease. Half a dozen grown passengers and a baby mountain of paraphernalia fit in, too. Like to play with numbers? Look into the Volkswagen Station Wagon. It's 4 feet shorter than most wagons, yet holds more and costs hundreds of dollars less.

ACADEMY MOTORS INC. 
TROY - SCHENECTADY ROAD, LATHAM, N.Y.
STATE 5-5581 . . . AUTHORIZED DEALER

SENIOR AND JUNIOR HIGHS

After seeing the second performance of *Bells Are Ringing* we have nothing but praise for the senior play! It was a team effort and everyone did an outstanding job. In regard to the play — Teachers: was *Bells Are Ringing* worth all those undone homework assignments?

Friday night the first basketball game of the season is to be played on home ground. The Eagles stand Shaker in what is expected to be a difficult game. Let's all support our basketball team and have everyone out for this game — in the Senior High gymnasium.

We are rather short of news this week so we'll give you news of little importance; to wit — this week marks the end of the second report period and report cards are issued next week. . . .

Next week, Dec. 10, the annual Key Club Pancake supper will be held in the Senior High dining room. More news of this next week.

Also, the White Christmas festival Dec. 15 and 16. Do all you can to participate in this wonderful community project.

Til next week,

Ron Denham

Congratulations to football letter winners Bill Merritt, Charley Smith, Jim Myron, Sal Pipito, Rick Riley, Wayne Smith, Tom Holmes, Ron Herrick, Barry Gainor, Ken Strong, Dave Reynolds, Jim Braat, Bob Crocetta, Tony Ganey, Roger Chesser, Don Cronk, Dick Lang,

FAMILY

Fish Fry

ALL YOU CAN EAT

EVERY WED. NITE
4 P.M. to 9 P.M.

\$1.00

Fish Fry Includes

- French Fries
- Freshly Baked Rolls
- Wedge of Lemon
- Cola Slaw
- Creamery Butter
- Tartar Sauce

Children 65c Only

HOWARD JOHNSON'S

Southern Blvd., Rt. 9W

Ned Kiley, Ron Linstuth, Hank Soule, Harding Hallenback, Dick Cavanaugh and Bill Braun. The seasons managers were Don Estey, Steve Herrick and Tom Blatner. Congratulations to those guys who couldn't quite get a letter, too.

Also recognized at the award assembly where the letters were given were the champion intermural teams. Their captains were John Stevenson, seventh grade; Bill Adams, eighth grade; Bob Spuck, ninth grade.

Honor passes were also awarded at this assembly to Student Council members: Rick Manning, president; Di Strickland, vice-president; Sue Loudis,

secretary; Debbie Mayne, treasurer. The service squad representatives were also given passes — Bill Reynolds, Noon Hour Squad; Lindy Alexander, library assistant; Pete Applebee, Guide Squad; Rich LaRose, Traffic Squad; Chuck Davis, P.A. Club; Steve Candors, Bicycle Squad; Ron Herrick, Audio-Visual Club; Marilyn Mancuso, Dining Room Squad. Congratulations!

Dave De Porte

**JUNIOR CYO OFFICERS
TO PRESIDE OVER
DEC. 11 MEETING**

The new officers of St.

Thomas' Junior CYO will preside at the Dec. 11 meeting at 7:00 P.M. in the school auditorium. President James Shea will be assisted by Thomas Lafey, vice-president; Mary Ann

Preston, secretary; and Pamela Pritchard, treasurer. Mrs. Robert Halloran, adult sponsor of junior activities on the Catholic Council, will supervise the program.

DRAPERIES - SLIP COVERS

Custom — Redi-made

TEXTILE DECORATORS

Thousands of Fabrics to Choose From
One of The Largest Selections of Fiber
Glass Drapery Materials in the State!

Textile's New Shopping Convenience:

Open 9 a. m. to 9 p. m., Monday and Thursday

91 N. Pearl St. Albany

HO 3-2216



★ BRANIGAN'S ALTAMONT INN

★ COMPLETE DINNER

(Formerly the Wagon Road Inn)

★ Make reservations now for
★ THANKSGIVING & CHRISTMAS DINNER

★ Whole turkeys served for 4 people or more
(phone us for prices etc. on 'X'mas Office Parties)

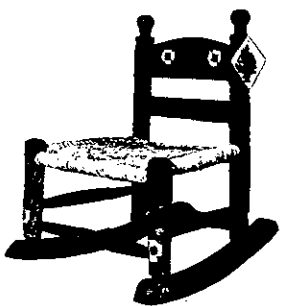
Closed
Mondays

★ LUNCHEON • DINNER • COCKTAILS

★ Facilities for parties receptions and anniversaries

★ RT. 156 UN 1-8827 • ALTAMONT — OPEN ALL YEAR

**MOMMY AND DADDY, Tell
Santa Claus to bring me this
beautiful little chair!**



Nationally Famous
'Chico' chairs for
children, hand made
and decorated. So
sturdily built, they
will support 200
pounds. Available in
assorted colors, also
regular chairs

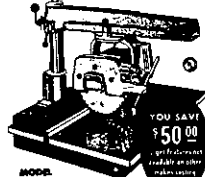
limited quantity
Rockers- \$4.50
Chairs- \$2.95

YOU WILL ENJOY A VISIT TO
Connoisseur Gallery
750 Delaware - Delmar N.Y

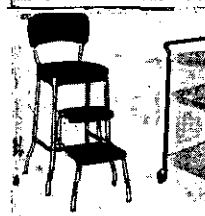


NOW \$199
DELIVERED

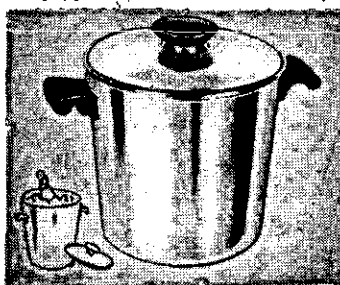
ECONOMY DEWALT POWER SHOP
The low-priced quality DEWALT you waited for!



Compare and be convinced! See a FREE demonstration! TAKE HOME THE BIGGEST BARGAIN EVER!



COSCO
Stools \$10.95 Tables \$9.98



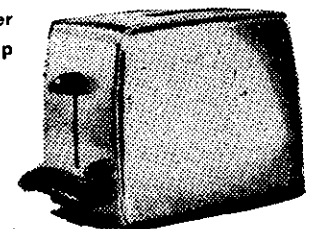
Ice Bucket \$9.95



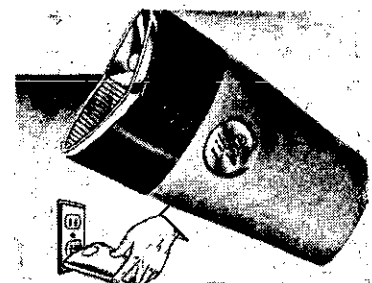
Door Knocker
from \$2.50 up



PEPPERMILL AND SALT SHAKER SET \$3.98



Dainty Maid \$9.99



Never Needs New Batteries! RECHARGEABLE FLASHLIGHT \$5.95

HILCHIE'S HARDWARE INC.

ELSMERE - AT - THE - LIGHT

WE DELIVER

HE 9-3941



Freikofer's

DELICIOUS BREAD, ROLLS & CAKE

Everyone's Talking About . . .
FREIHOFFER'S NEW SUNBEAM BREAD

DAILY DELIVERY TO YOUR HOME
PHONE HO 3-2221

2 lb. Genuine Fruit Bars \$2.25
4 lb. Genuine Fruit Ring \$4.50

NEW TWIN-PAK

TWO 2 lb. Genuine Fruit Bars \$4.50

The above cakes are packed in Holiday Gift Boxes.
An IDEAL HOLIDAY GIFT the whole family will enjoy.

THURSDAY

Dec. 1

- | | |
|--|--|
| <input type="checkbox"/> Strawberry Rhubarb Pie 69c | <input type="checkbox"/> Lite Diet Bread 30c |
| <input type="checkbox"/> Cloverleaf Rolls 33c | <input type="checkbox"/> Jelly Roll 39c |
| <input type="checkbox"/> Chocolate Fudge Cups 36c | <input type="checkbox"/> Hard Seed Rolls 25c |
| <input type="checkbox"/> Italian Bread 22c | <input type="checkbox"/> Orange Sheet Cake 49c |
| <input type="checkbox"/> Crullers (Plain or Sugar) 24c | <input type="checkbox"/> Whole Wheat Bread 27c |

FRIDAY

Dec. 2

- | | |
|---|---|
| <input type="checkbox"/> Coconut Custard Pie 69c | <input type="checkbox"/> Sunbeam Bread 24c |
| <input type="checkbox"/> Orange Coconut Buns 39c | <input type="checkbox"/> Home Style Baked Beans 29c |
| <input type="checkbox"/> Old Fashioned Crullers 29c | <input type="checkbox"/> Boston Brown Bread 29c |
| <input type="checkbox"/> Cracked Wheat Bread 27c | <input type="checkbox"/> Unsalted Bread 27c |
| <input type="checkbox"/> Bran Toasties 29c | <input type="checkbox"/> Oatmeal Cookies 39c |

SATURDAY

Dec. 3

- | | |
|---|---|
| <input type="checkbox"/> Pineapple Crunch Layer 79c | <input type="checkbox"/> Chocolate Creme Pie 75c |
| <input type="checkbox"/> Pecan Coffee Ring 49c | <input type="checkbox"/> Cinnamon Raisin Buns 39c |
| <input type="checkbox"/> Butter Rolls 29c | <input type="checkbox"/> Maple Walnut Layer 59c |
| <input type="checkbox"/> Dunketts 32c | <input type="checkbox"/> English Muffins (6) 25c |
| <input type="checkbox"/> Milwaukee Rye 27c | <input type="checkbox"/> Golden Fluff Cake 54c |

MONDAY

Dec. 5

- | | |
|--|---|
| <input type="checkbox"/> Peach Pie 69c | <input type="checkbox"/> Old Fashioned Bread 27c |
| <input type="checkbox"/> Buffet Rye 27c | <input type="checkbox"/> Gold Creme Cups 32c |
| <input type="checkbox"/> Corn Toasties 29c | <input type="checkbox"/> Rye (Plain or Sugar) 27c |
| <input type="checkbox"/> Butter Parker House Rolls 39c | <input type="checkbox"/> Sandwich Cookies 39c |
| <input type="checkbox"/> Chocolate Chiffon Cake 44c | <input type="checkbox"/> Family Sandwich 24c |

TUESDAY

Dec. 6

- | | |
|--|--|
| <input type="checkbox"/> Cherry Pie 69c | <input type="checkbox"/> Bronx Rye (Un sliced) 27c |
| <input type="checkbox"/> Cinnamon Raisin Bread 35c | <input type="checkbox"/> Jelly Donuts 39c |
| <input type="checkbox"/> Spice Sheet Cake 49c | <input type="checkbox"/> Party Cups (16) 59c |
| <input type="checkbox"/> Danish Ring 49c | <input type="checkbox"/> Snowflake Rolls 29c |
| <input type="checkbox"/> Corn Sticks 25c | <input type="checkbox"/> Pound Cake 49c |

WEDNESDAY

Dec. 7

- | | |
|---|---|
| <input type="checkbox"/> LOUISIANA RING 69c | <input type="checkbox"/> Apple Pie 69c |
| <input type="checkbox"/> Cinnamon Buns 39c | <input type="checkbox"/> King Bread 27c |
| <input type="checkbox"/> Macaroon Cookies 54c | <input type="checkbox"/> Date Muffins 39c |
| <input type="checkbox"/> Sesame Seed Butter & Egg Rolls 33c | <input type="checkbox"/> Hot Dog Rolls 27c |
| <input type="checkbox"/> Glazed Donuts 39c | <input type="checkbox"/> Sandwich Bread 36c |

Freikofer's

• Indicates items available every day. The above is not a complete list of available items. For further information ask your routeman or call the bakery.

WATCH "FREDDIE FREIHOFFER"
WRGB-TV WEEKDAYS
5:45 - 6:00



Churches

BETHLEHEM LUTHERAN CHURCH

Cor. Elm & Murray Aves.
Rev. Harold W. Scheibert, Pastor
Phones: HE 9-4328 & HE 9-2885
SUNDAY:

8:30 Early Worship Service
9:45 Sunday School and Adult Bible Class
11:00 Worship Service

CHRISTIAN SCIENCE SOCIETY

555 Delaware Avenue, Delmar, N.Y.

SUNDAY — 11 A.M.

Church Service and Sunday School

TESTIMONIAL MEETINGS

Every Wednesday at 8 P.M.

READING ROOM:

397 Kenwood Ave.

Hours: Tuesday-Friday, 11:30-3:30 P.M.

Saturday 10:00-2:00 P.M.

CLARKSVILLE COMMUNITY CHURCH

Rev. James A. Neevil, Pastor
Sunday 9:45 a.m. Church School
11:00 a.m. Service of Worship
7:00 p.m. Youth Fellowship
(All young people grades 7-12)

COMMUNITY METHODIST CHURCH

Slingerlands - Rev. J. R. Rhodes
Sunday

9:45 Church School for grades 7-12

10:15 Cherub Choir rehearsal in Fellowship Hall

11:00 Church School for Kindergarten-grade 6

11:00 Morning Worship. Supervised care for pre-nursery and nursery

3:00 Junior High Youth Fellowship — Fellowship Hall

5:30 Senior High Youth Fellowship — Fellowship Hall

DELMAR PRESBYTERIAN CHURCH

Rev. George H. Phelps, Pastor
Sunday services are held in the Delmar Masonic Temple, Kenwood Avenue & Adams Street
Sunday

10:15 Worship Service, Nursery and Church School, grades 1-6

3:00 Jr. High course and fellowship (grades 7 and 8), 32 Albin Road, Delmar

3:00 Sr. High and grade 9 course and fellowship, 4 Laurel Drive, Elsmere

Monday

7:45 Choir rehearsal, 43 Union Ave., Slingerlands

DELMAR REFORMED CHURCH

Delaware Avenue, Delmar

Rev. Dr. LeRoy C. Brandt

Thursday

7:30 P.M. Senior Choir rehearsal

Sunday

9:45 A.M. Church School

10 A.M. Arnold Adult Bible Class

11 A.M. Worship Service, crib and nursery services

5:45 P.M. Youth Choir

6:30 P.M. Jr. High and Sr. High

Youth Fellowships

Tuesday

3:45 P.M. Junior choir rehearsal
8 P.M. Women's League Christmas Program

FIRST METHODIST CHURCH

Kenwood Avenue, Delmar
Rev. Arthur P. White

Sunday

9:30 and 11:00 Divine Worship
9:30 Church School for Cradle Roll, Nursery, Kindergarten, Grades 1, 2, 3, 4, 5
11:00 Church School for Cradle Roll, Nursery, Kindergarten, Grades 1, 2, 3, 4, 7, 8, 9
4:00 Ninth Grade Fellowship
5:00 Youth Choir rehearsal
6:15 Youth Fellowship

FIRST METHODIST CHURCH OF VOORHEESVILLE

New Scotland Road - Route 85
Rev. Walter Taylor, Pastor
Mr. and Mrs. Neldon Vandenburg, organist and choir director
Mr. and Mrs. Gareld Kling, superintendents of Sunday School

Sunday

9:45 A.M. Sunday School
11:00 A.M. Morning Worship

FIRST REFORMED CHURCH

of Bethlehem, Selkirk

SUNDAY

9:45 A.M. Sunday School
11:00 A.M. Worship Services
7:00 P.M. Youth Fellowship

WEDNESDAY

6:45 P.M. Junior Choir
7:30 P.M. Intermediate Choir
8:15 P.M. Senior Choir

GLENMONT COMMUNITY CHURCH (Reformed)

Weiser Street, Glenmont
Rev. Harvey W. Noorday
HE 6-7710

SUNDAY:

10:00 Morning Worship
Nursery care for young children
11:10 a.m. Church School, classes for all ages, including adults
7:00 Youth Fellowship

Thursday

7:30 P.M. Midweek Program

JERUSALEM REFORMED CHURCH

Feura Bush
Robert Eggebeen, Pastor

SUNDAY:

9:30 a.m. Sunday School
10:30 a.m. Worship Service
6:30 p.m. Jr. Youth Fellowship
7:45 p.m. Sr. Youth Fellowship

NEW SALEM REFORMED CHURCH

New Scotland Road
P.O. RD 1, Voorheesville
Rev. William A. Boehne

SUNDAY

10 A.M. Sunday School
11 A.M. Morning Worship

WEDNESDAY

7:30 P.M. Youth Fellowship

THURSDAY

3:30 P.M. Junior Choir rehearsal
7:30 P.M. Senior Choir rehearsal

NEW SCOTLAND PRESBYTERIAN CHURCH

Rev. Charles Rice, Stated Supply minister
Sunday

9:30 Sunday School

11:00 Morning Worship

4:30 P.M. Junior United Presbyterian Youth

5:30 P.M. Junior choir

6:30 P.M. Jr. High Westminster Fellowship

7:30 P.M. Sr. High Westminster Fellowship

Monday

7:30 Senior Choir

Wednesday

11:00 A.M. Ladies Aid

Thursday

10:00 A.M. Bible Study

NORMANSVILLE COMMUNITY CHURCH

C. Emory Weeks, Pastor
SUNDAY:

9:30 a.m. Sunday School, Children and Adults

11 a.m. Worship Service

7:30 p.m. Evening Fellowship Hour

WEDNESDAY:

7:30 p.m. Hymn Sing followed by Adult Bible Class

FRIDAY:

7:15 p.m. Youth Fellowship

SATURDAY:

1 p.m. Choir practice

8 p.m. Capital City Rescue Mission, 2nd week each month

ONESQUETHAW REFORMED CHURCH

Tarrytown Road, off Route 32
Robert Eggebeen, Pastor

11 A.M. Sunday School

12 Noon - Worship Service (Nursery service provided)

Guild for Christian Service Meeting - 3rd Tuesday of every month.

Consistory Meeting - 3rd Wednesday of every month.

ST. STEPHEN'S

EPISCOPAL CHURCH

Elsmere Avenue, Delmar
The Rev. Charles H. Kaulfuss
Rector

The Rev. David Randles, Curate

8:00 A.M. Holy Communion

9:30 A.M. Holy Communion,

Sunday School and Sermon

11:00 A.M. Morning Prayer and Sermon

ST. THOMAS CATHOLIC CHURCH

Delaware Avenue, Delmar

Msgr. Raymond F. Rooney

SUNDAY MASSES (in the Church) 7, 8, 9, 10, 11 (High Mass), 12. (In the Auditorium) 9, 10 and 12 noon.

WEEKDAY MASSES:

6:45 and 7:30

SATURDAY MASSES: 8 and 9

THE METHODIST CHURCH

So. Bethlehem, Rev. W. L. Cosman
SUNDAYS -

9:45 a.m. Church School

11 a.m. Morning Worship

7 p.m. Youth Fellowship

UNIONVILLE REFORMED CHURCH

Delaware Turnpike, Unionville

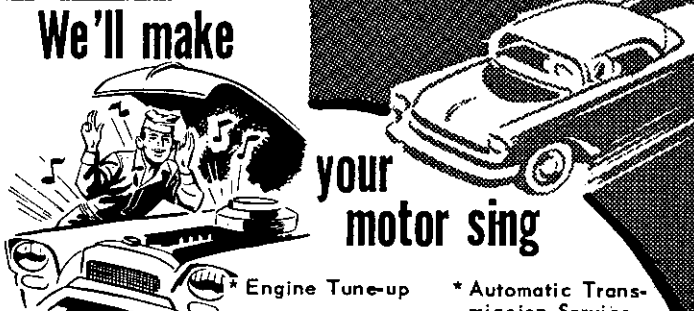
Rev. Andrew Hansen, Pastor

10:00 A.M. Sunday School

11:00 A.M. Worship Service

6:30 P.M. Youth Fellowship

We'll make your motor sing



* Engine Tune-up * Automatic Transmission Service
* Front End Alignment Modern Equipment
Skilled Mechanics

BAILEY'S GARAGE

Phone Delmar 9-1446
Oakwood Rd., Elsmere

Your **NEAREST** Mutual Savings Bank Pays TOP DIVIDENDS

UPTOWN
301 New Scotland Ave.
Corner Ontario Street
OPEN FRIDAYS until 8 P.M.
Plenty of Parking Space

3½%
A YEAR

Credited and Compounded Quarterly

CITY & COUNTY Savings Bank

FOUNDED 1850

DOWNTOWN
100 STATE STREET
UPTOWN
301 NEW SCOTLAND AVE.

ALBANY, N. Y.

Member Federal Deposit Insurance Corporation

Save In Person or By Mail

City & County Savings Bank
301 New Scotland Ave., Albany 8, N. Y.
(or) 100 State St., Albany 1, N. Y.

☐ Send New, FREE Banking by Mail Booklet.

Enclosed is \$_____. Please open a savings account for me as checked and mail passbook to address below.

☐ Individual Account in my name.

☐ Joint Account with _____

☐ Trust Account for _____

Name _____

Address _____

City _____ Zone _____ State _____

If you send cash, use Registered Mail

SPOTLIGHT HE 9-4949 CLASSIFIEDS

Classified Advertising RATES

10¢ per word for each insertion;
\$1 minimum.

CALL HE 9-4949

Write, or stop in at our
convenient office:

154 Delaware Avenue

ASH & TRASH REMOVAL

ASH & trash removal; no charge
for bundled newspapers. HE
9-1287 Charles DeGrush.

CARPENTRY

REMODELING — All types of
carpenter work. H. A. Ertel,
HE 9-1048. Ed. Hehre, HE
9-1198

W. FLANSBURG — kitchen
counter-tops, bath tile repair
service. RO 5-2896

REMODELING, repairing and
new house building. William F.
Van Woert, contractor-builder.
UN 1-8091

CHRISTMAS CARDS FOR SALE

CHRISTMAS cards (15) — por-
trait 5 x 7 \$5. Your Home.
Appointment. HE 9-5577

CHRISTMAS TREES FOR SALE

CHRISTMAS trees—Scotch pine

and Norway Spruce, \$4 each.
Also boughs and door sprays. No
tree cut until you select it! Wear
overshoes. Weekdays after 3
P.M. or weekends. Bender Lane
— 1 mile off Elsmere Ave. at
Route 9W. R. E. Vanderwood.
HO 2-4343

DOLL REPAIRING

DOLLS repaired, restrung. Reina
Deitz, 13 Ten Broeck St., Al-
bany. HE 6-1690

ELECTRICAL WORK

ALL TYPES electrical work. Call
HE 9-4381

FIREPLACE WOOD

FIREPLACE wood. Seasoned
hardwood. Also kindling. HE
9-2072

FIREPLACE wood, seasoned. All
lengths. HE 9-4964

SEASONED hardwood. Order
now before it snows! HE 9-1607

FREEZE LOCKERS

BETHLEHEM Co-operative
Freeze Lockers. Same price as
1945, 6 months \$9.00. Call
HEmlack 9-3037 to apply. Good
meat — convenience.

FUNERAL DIRECTORS

In Time of Need, Call
M. W. TEBBUTT'S SONS
176 State 12 Colvin
Alb. HO 3-2179 Alb. IV 9-0116
420 Kenwood
Delmar HE 9-2212
11 Elm Street
Nassau 8-1231

Over 110 years of
Distinguished Funeral Service

FURNITURE REFINISHING

FURNITURE repairing, refinish-
ing, re-upholstering. French. HE
4-0633

GRADING

GRADING, topsoil, fill and crush-
ed stone. Backhoe available.
Michael Essex. Dial RO 7-3478

HOMEMADE SAUSAGE

HOMEMADE sausage and fresh
pork. John Guertze, Prop. HE
4-8903

LAWN MOWERS

SHARPENED and repaired. Pick-
up and delivery. Saws repaired.
See our 1960 line of reel and
rotary mowers. Trades accepted.
Time payments. WACKSMAN,
426 Third St., Albany. HO
5-2756. Open evenings.

LAWNS & GARDENS

TOP SOIL! We are now taking
orders for the finest quality loam
available. J. W. MICHAEL'S
Co. Inc. HE 9-3823

MASON WORK

BRICK, block, sidewalks, floors
and chimneys. Free estimates.
McKeon Construction. HE
9-1294

PAINTING — PAPERHANGING

ALL types decorating, painting,
floors, ceilings, paper-hanging.
HE 9-1436. Goeldner Contract-
ing

ROY FLANSBURG, painting
contractor. RO 5-2712. Voor-
heesville, N. Y.

INTERIOR and exterior painting.
Also carpentry work. Frank Sal-
isbury. Days — HE 9-5527
Nights — HE 9-1355

PAPER-HANGING, painting, in-
terior and exterior decorating.
Roofing and all general repair-
ing. HO 3-2339

REWEAVING

INVISIBLE re-weaving. Burns —
tears — holes. Rewoven on all
clothing and fabrics. HE 9-4138

ROOFING

THE SPOTLIGHT

CHIMNEYS, new roofs, gutters,
repairing and painting. HO
3-1604

SAWS FILED

SAWS filed and set by hand or
machine; also re-toothed. Plan-
er knives sharpened. John Whit-
ley Sr., 8 Vagale Lane, Glen-
mont. HO 2-4154

SEPTIC TANK SERVICE

NORMANSKILL Septic Tank
Cleaners. 24 hour service. Ray
Denney. HE 9-2824

SEWING & ALTERATIONS

ALTERATIONS and sewing. M.
Buess. HE 9-1270

DRESSMAKING and alterations.
J. Rhees. HE 9-1518

SNOW PLOWING

SNOW plowing by contract or
by each individual snow-fall.
GREENLEAF GARDENS. HE
9-2009

SNOW plowing — arrange now!
Estimates given. Donald D. Ter-
hune. HE 9-2184

TREE REMOVAL

TREE REMOVAL. RO 7-3478.
Mike Essex.

TRUCKING

D. L. MOVERS. Furniture and ap-
pliance specialist. Every cus-
tomer a satisfied one. HE 9-5210

WATCH REPAIRS

EXPERT watch and clock re-
pairs. D. Le-Wanda Jeweler.
Delaware Plaza Shopping Cen-
ter, store #4. Phone HE 9-9665

WESTINGHOUSE MAJOR APPLIANCE SERVICE

EXPERT factory-trained repairs
to washers, dryers, dishwashers,
etc. Imperial Appliance Co. Wil-
liam Dorato. HO 5-2035

MERCHANDISE FOR SALE

You Bet...

... she'll judge her diamond
by the store ... from which it came ...

... so buy it from a jeweler

with a good ...

respected name ... !



Fuhrman's inc.

JEWELERS • SILVERSMITHS
52 STATE ST., ALBANY, N.Y.

on the corner - next to Keeler's

REMODELING KITCHENS BATHROOMS

FORMICA TOPS
ARMSTRONG LINOLEUM FLOORS
CUSTOM BUILT CABINETS

Also
WALLPAPER & PAINTS

BARTLEY'S

FOR QUALITY PRODUCTS

120 ADAMS ST. HE 9-3190



ALUMINUM combination windows, weather-stripped, triple track. \$16 installed. Taylor Aluminum Products. Robert Taylor, RO 5-2856

DOLL CLOTHES made to order for all size dolls! HE 9-2622

HOBBY horse, largest size. Cost \$39.95. Excellent condition — \$18. HE 9-3601

SHOT GUN, 10 gauge, 3½ mag. Excellent condition \$85. HE 9-5428

REFRIGERATOR, approximately 10 cubic foot \$30. Twin oven electric range \$45. Five foot oval gilded Victorian mirror \$15. Marble corner bathroom sink \$10. 9 pair metal Venetian blinds 32¾" x 53", 50¢ each. HE 9-5281

5 **PIECE** chrome kitchen set, good condition \$15. RO 5-2537

REFRIGERATOR — Frigidaire — nearly new, pink. HE 9-4805

MAN'S topcoat, 2 suits, size 40 and 42. Excellent condition. Reasonable. HE 9-4578

HOTPOINT refrigerator, automatic defroster, 80 lb. freezer, 2 years old \$100! Dining set and buffet \$35. 275 gal. oil tank \$25, 2 oil barrels \$4. 2 loads stove wood, cut 12" \$25. Power mower, 18" \$15. Also Duo Therm oil heater with blower, 1 year, \$50. Oil and gas stove \$25. RO 7-3833

ANTIQU butternut ¾ bed, box spring \$150. HE 9-3410

DINING room corner Hutch cabinet \$15. Clarinet \$75. Excellent condition. HE 9-4522

AUTOMOTIVE FOR SALE

1960 **FORD** Fairlane 500. Excellent condition. Very reasonable. Artistic Press, 16 Watervliet Avenue, at Central Avenue. IV 9-4469

NASH, Metropolitan, 1959, two-door, standard gear-shift on steering post. Actual 6000 miles, 30 miles per gal. Perfect condition. Yellow color. \$1200. Call or see Herman Rasker, The Village Shop. HE 9-1823

LOST DOG

SMOOTH hair toy terrier. Answers to "Chip." White with 2 black spots on back and black on ears. Wearing brown collar. Lost in Elsmere-Glenmont area. REWARD. HE 9-2042

PETS FOR SALE

COLLIES, registered, Tri's and Blues. Order now for Christmas. Westerlo PY 7-5593

WANTED

COX Headliner machine — or similar. Call evenings. HO 2-4713

ROOM and board for refined

elderly woman. Call **ROGER** 7-3446 evenings or between 12 noon and 1 P.M.

APARTMENT FOR RENT

STUDIO — heat, utilities and garage. \$75. HE 9-4801 after 4:30 P.M.

WANT TO LOSE WEIGHT?

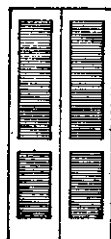
I **HAVE** a just-like-new **RELAXACIZOR**. (Used it 4 times, then

lost will power and am trying heartless diets.) Cost **ME** \$200; I will sell it to **YOU** for \$100. Call **ME** at IV 9-3749 after 6 . . . before I change my mind.

LEGAL NOTICE

Nothing is to be charged by anyone against the following people, i.e., **HERBERT B.** and **EDITH M. WIDEMAN**, unless requested by either of above.

Sale



FOLDING DOORS LOUVERED OR FLUSH

Complete With Hardware

From **\$15.88**

Complete assembled windows and frame units with metal balances opening size

2/0 x 3/2 \$12.79

2/4 x 4/6 \$14.29

3/0 x 4/6 \$15.29

Many other sizes available at one of above costs

1¾" **WHITE PINE** EXTERIOR FRONT DOORS **\$14.75**

YOUR CHOICE

1¾" Mahogany interior flush doors **\$5.35 to**

1¾" 6 panel white pine interior **\$6.50 ea.**

1¾" 2 panel fir interior

ALUMINUM COMB. DOORS **\$22.50 ea.**

2/6-2/8-3/0x6/8

Wood Combination Doors. 1½" thick. All Sizes With Aluminum Screens **\$13.50 ea.**

Storm Sash As Low As **\$2.69 ea.**

DUTCH BOY PAINT

Flat Wall Enamel—12 Colors 1.24 Qt.
Pastels and Deep Shades 3.96 Gal.

Many Other Items Not Listed

F. F. CRANNEL LUMBER CO.

OUR 2 LOCATIONS

278 Delaware Ave.
Delmar, N. Y.

B'way & 19th St.
Watervliet, N. Y.

Phone HE 9-9927

Phone AR 3-2635

TOY SALE!

ANY \$1.98 ITEMS NOW \$1.47

ANY 98¢ ITEMS NOW 77¢

see our other unadvertised items
TERRIFIC BUYS

TOY FAIR

DELAWARE PLAZA DELMAR, N.Y.

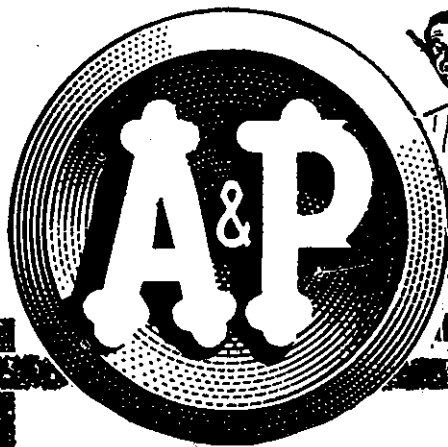
HE 9-5539

WE DELIVER

CHARGE

FIRST TRUST COMPANY OF ALBANY

ACCOUNT



COME SEE ...
YOU'LL SAVE!

SUPER-RIGHT QUALITY
TENDER AND SOFT-MEATED

LAMB LEGS

WHOLE
REGULAR
TRIM

59^c LB

OVEN-READY LAMB LEGS LB 67^c

GENUINE — NOT GROUND OR CHOPPED

VEAL CUTLETS

CUT FROM
THE LEG ONLY

LB **99^c**

SUPER-RIGHT QUALITY

Veal Roast

LEG OR
RUMP

LB **65^c**

von Bank's
TV SERVICE
HE 4-5887

Quality Responsibility Honesty

NEED A FAST CAR WASH?

TRY THE NEW
MINUTE MAN

590 CENTRAL AVE., ALBANY

PATROON FUELS Inc.

offers a real

**"BIG
PACKAGE"**



**"WATCHDOG" OIL HEAT SERVICE IS THE
MOST COMPLETE OIL HEAT PACKAGE
FOR \$25.00 PER YEAR!**

Includes cleaning of burner, all controls, cleaning of boiler or furnace and smoke pipe. Emergency service calls, day or night. Repair or replacement of all burner parts due to normal wear. Repair or replacement of 275 gallon basement oil tank. Premium quality oil and automatic deliveries.



For Complete "Watchdog"
Service Call

PATROON FUELS INC.

91 LEXINGTON AVE.

Phones: HO 5-3381; HO 5-7404

**"WATCHDOG"
OIL HEAT SERVICE**

Permit No. 10
PAID
Bulk Rate
U. S. POSTAGE

