

FEBRUARY 7, 1974
VOL. XIX, NO. 6

The Spotlight

Controlled Circulation Publication

20¢



HANDY HUT CERAMICS

ROUTE 9W & BEACON ROAD, GLENMONT, N.Y.
449-8795

Classes — Greenware — Paint

**HEARTS!
HEARTS!
HEARTS!**



**VALENTINE
GIFTS in
14 KT.
YELLOW GOLD
OVERLAY**

from
\$12.00



Fuhrman's inc.
JEWELERS • SILVERSMITHS

67 STATE ST., ALBANY
Free Parking at All 14 Park & Shop Lots

FINAL WINTER HAT CLEARANCE 1/2 OFF

**FULL SKIN MINK HATS
were \$75 — NOW \$55**

**Close Out of Body Suits &
Fall Slacks**



*Anne's
Hat Box
and
Accessories*



4 Corners, Delmar
Daily 10 to 5:30



Helena Rubinstein **COURANT SPRAY** SPECIAL EDITION \$2.50

Helena Rubinstein **HEAVEN SENT SPRAY MIST**
\$4.75 Value — **\$3.00**

LANVIN ARPEGE & MY SIN SPRAY MIST **\$3.25**

HOUBIGANT CHANTILLY & QUELQUES FLEURS
HAND & BODY LOTION \$5.00 Value — **\$2.50**

ALPHA KERI BATH OIL \$3.25 value — **\$2.39**

Men's OLD SPICE COLOGNE \$3.50 value — **\$2.50**

OLD SPICE SUPER SMOOTH SHAVE \$1.00 value — **\$.49**

CERVANTES MEN'S AFTER SHAVE LOTION **\$5.00**

LOFT'S & WHITEMAN'S FINE CANDIES VALENTINE WRAPPED

PLAZA PHARMACY

DELAWARE PLAZA

Delaware Plaza, Delmar, N.Y. • 439-4511

Spotlight

is published every Thursday by Spotlight, Inc., 154 Delaware Ave., Delmar, N.Y. 12054. Robert G. King, Publisher; LeVere L. Fuller, Editor. (Controlled Circulation, Postage Paid at Delmar, N.Y.) Deadline for news is Thursday afternoon, one week preceding publication; deadline for display and classified advertisements is Friday afternoon.



Visit the largest and most complete fireplace specialty shop in Eastern New York State.

Everything that goes into, over or in front of your fireplace.

Let us help with your outfitting and decorating needs.

**Come to . . .
THE FIRESIDE
SHOP**

1875 Central Avenue
Mon.-Fri. 12-8; Sat. 10-5



Here's Something Worth
Shouting About!

Our extra care in your
remodeling is what
makes the difference.

**FOR A FREE ESTIMATE
CALL ANYTIME
767-9387**

H R H
DESIGNS, INC.

HOME REMODELING HEADQUARTERS
ONE CALL DOES ALL
ESTIMATES • FINANCING • CONSTRUCTION

- Kitchens
- Bathrooms
- Heating Systems
- Family Rooms
- Roofing & Siding
- Room Additions
- Floors & Carpets
- Doors & Windows
- Interior and Exterior Work

ROUTE 9W • SELKIRK, N.Y.

**if you
rent-**

an apartment or house, protect your clothes, furniture and other personal belongings with a low-cost State Farm Tenant Homeowners Policy. Let me give you all the details.



ED BERGMANN
50A Delaware Ave.
Delmar
482-8771

*Like a good neighbor,
State Farm is there.*



STATE FARM FIRE
and Casualty Company
Home Office
Bloomington, Illinois

**TAKE A LOOK AROUND
YOUR HOME!**

EVERYONE ELSE DOES

Castro Convertibles

COLONIE CENTER

459-7653

Floral Valentines

Baldwin's Flowerland, Inc.

Rt. 9W, Ravena • 756-2147

TOWN AND TWEED

1/2 off

ALL REMAINING SALE MERCHANDISE
COATS • DRESSES • SPORTSWEAR
LONG SKIRTS • ACCESSORIES • JEWELRY

DELAWARE PLAZA • DELMAR OPEN 10AM - 9P.M. • SAT. 10AM - 5:30 P.M.

For once let the bank come to you.

Let's face it — there are times it's easier to let the post office do your walking for you. Now you can do your banking in the comfort of your home or office . . . with a CSB Bank-By-Mail checking account. And CSB will make things even easier by paying postage both ways.

You'll get a statement every month if you open a regular or business account, or a quarterly statement if you open a personal or 62+ account.

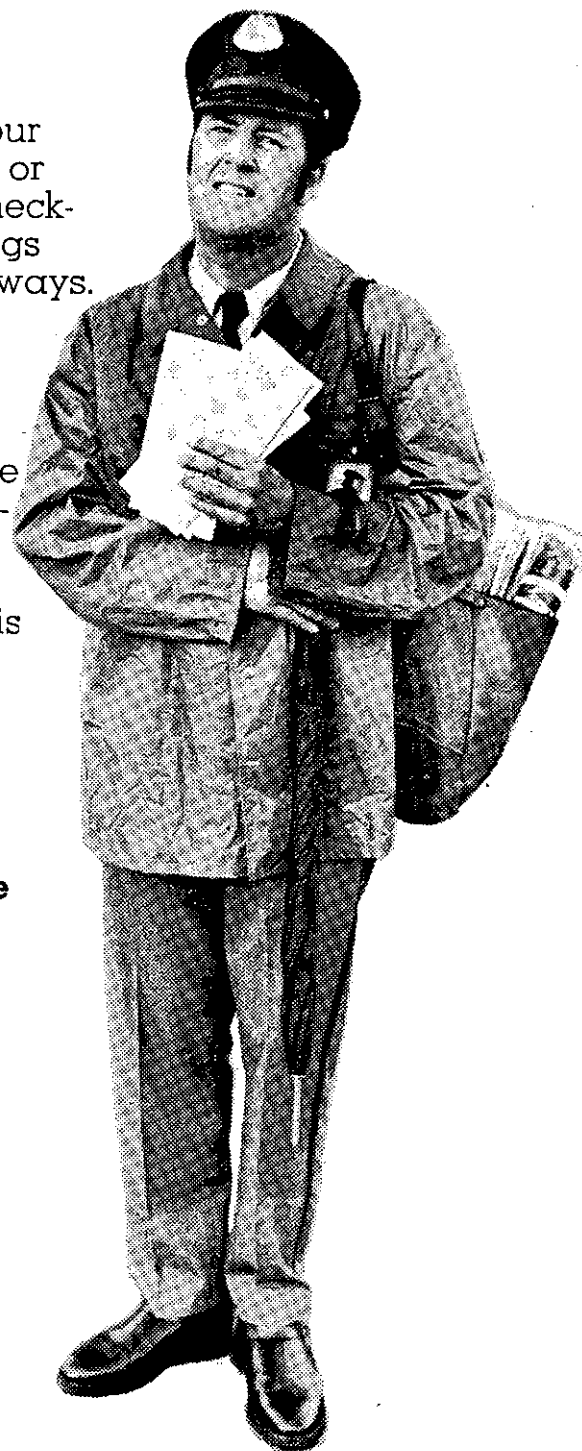
With banking by mail, paid postage and regular statements, the Bank-By-Mail account figures out to be the easiest checking account around.

Opening a Bank-By-Mail account is as simple as calling CSB or stopping in at our nearest office.

So sit down and let the bank come to you with a Bank-By-Mail account! We understand how you appreciate life's little conveniences. We understand, because at CSB . . . **People Are Our Business.**

Community
STATE
BANK

Now with Seven Offices at 50 State St. and 567 New Scotland Ave. in Albany. 224 State St. and 1815 State St. in Schenectady. 2695 Hamburg St., Rotterdam. 146 Columbia Turnpike, East Greenbush. Rts. 9W & 32, Town Squire Shopping Center in Glenmont.



Spotlight CALENDAR

ANNOUNCEMENT

Beginning with this issue, the "every-week" announcements which usually appear in this space will be run twice a month. This is not to say that they are any less important than others, but they are omitted in an effort to conserve space for other features which otherwise would have to be left out.

THURSDAY, FEBRUARY 7

8 P.M., meeting, Albany Ski Club, Center Inn, 9W, Glenmont.

9:30 A.M., meeting, League of Women Voters, Bethlehem Public Library, Babysitting. Info: Janet Butlin, 439-2210.

9:45, Antique Study Group, Delmar Progress Club, meet Town Parking Lot.

7:30 P.M., Color Slide Show, Delmar Camera Club, Bethlehem Library, Colonial Williamsburg.

BCHS Sports

JV Wrestling — BCHS at Shaker, 7 P.M.

9:30 A.M., League of Women Voters will discuss school problems including tax inequities, Beth. Public Library. Baby Sitting. Info: Janet Butlin, 439-2210.

FRIDAY, FEBRUARY 8

7:30 P.M., Color Slide Show, Delmar Camera Club, Bethlehem Public Library, English Countryside.

8 P.M., N.Y. State New Democratic Coalition's Candidates debate, Silo Restaurant, public invited, information: 463-7721.

BCHS Sports

JV & Varsity Basketball — Shaker at BCHS, 7 P.M.

8th Grade Basketball — BCHS at Niskayuna, 3:45 P.M.

Frosh Basketball — Shenendehowa at BCHS, 3:45 P.M.

Varsity Wrestling — BCHS at Shaker.

SATURDAY, FEBRUARY 9

BCHS Sports

JV Wrestling — Sub. Council Tournament, Niskayuna

Varsity Swimming — BCHS at Rome, 1 P.M.

Indoor Track Invitational Meet, 12 Noon

Afternoon volunteerism workshop, United Methodist Church, Voorheesville with Mrs. Cynthia Wedel.

MONDAY, FEBRUARY 11

8 P.M., meeting, Concerned Citizens, Fire House in So. Bethlehem. DOT speaker will discuss local highways.

8 P.M., meeting, Bethlehem Democratic Action Group, Bethlehem Public Library. Information: 439-7216.

TUESDAY, FEBRUARY 12

6:30 P.M., meeting, Slingerlands United Methodist Women, covered dish supper.

1 P.M., tea, Tawasentha Chapter of the National Society Daughters of the American Revolution at the home of Mrs. Stephen Richards.

9:30 A.M., lecture, Delmar Progress Club, "Wild flowers of New York State," Fellowship Hall, Methodist Church. NOTE: change of place.

ON SALE

1.75 (Regular \$2.25)

Carvel
Ice Cream

**Imitated but never
Duplicated
SINCE 1934**

**Quality Ice Cream
made the old-
fashioned way
with fresh cream,
egg yolks, etc.!**
wt. 3-1/2 lbs.

Certified
Kosher
by OK
Labs

Carvel Ice Cream Supermarket

222 Delaware Ave., Delmar, N.Y.

Open 7 Days 10 to 9

439-7253

COME TO OUR PARTY!

**It's our SECOND ANNUAL
WINE FESTIVAL at CEN-
TER INN — FRIDAY, FEB.
15 at 8 P.M.**

Bill Edwardsen, WQBK, M.C.

**There's More! 6 big prizes award-
ed for the 6 best recipes using
Wine or Spirits. Entries must be
submitted at Glenmont Liquor
Store by Feb. 14 to be eligible.**

**OPEN FROM
10:00 - 9:00
Mon.-Sat.**

Call us at 463-6127 for further details!

GLENMONT LIQUOR STORE

TOWN SQUIRE SHOPPING CENTER — 9W-Feura Bush Rd., Glenmont



**Switch to
A&P Brands
for Extra
Savings!**

Boneless Bottom
**Round
Roast**

Beef

\$1.48
LB.

WE WELCOME U.S.D.A. FOOD STAMPS

AP
WEO
Where Economy Originates

Frying Chickens

U.S. GOVT. INSPECTED

**Box-O-
Chicken**

• 3 Break-Quarters w/Wings
• 3 Leg Quarters w/Backs
• 3 Giblets
• 3 Necks
• 3 Wings

45¢
LB.

45¢
LB.



CHIKUITA

Bananas

GOLDEN RIPE

2.29¢
LBS.



ANJOU
Pears

WASHINGTON STATE

EXTRA
FANCY

29¢
LB.

A&P WEO Fresh Produce Buys!

Apples

U.S. NO. 1, 2 1/2" MIN.

• McIntosh
• Red Delicious
• Golden Delicious

3 \$1.00
LBS.

ICEBERG
• **Lettuce** LARGE HEAD
PASCAL
• **Celery** LARGE BUNCH
RED
• **Radishes** 1 LB.

3 \$1.00
FOR

**Save...Buy
A&P INSTANT
Potatoes**

16 oz.
PKG.

53¢

**Save...Buy A&P's
SULTANA FROZEN
French Fries**

9 oz.
PKGS.

7 \$1.00

Angel Food
JANE PARKER CAKE

17 oz. PKG.

59¢

Saltines
A&P BRAND

1 LB. PKG.

35¢

Shave Cream
A&P BRAND

11 oz. CAN

49¢

Alloy Liquid
PINK FOR DYES

QT. BTL.

39¢

Bacon

STORE
SLICED

\$1.09
LB.

Beef Liver

SLICED

88¢
LB.

**Smoked
Hams**

"SUPER-RIGHT"
FULLY
COOKED
WATER
ADDED

SHANK HALF

69¢
LB.

Pork Butto

FRESH
SHOULDER

89¢
LB.

Pork Roasts

WHOLE OR
RIB HALF,
LOIN

\$1.08
LB.

Polish Sausage

FIRST
PRIZE
C.O.V.

\$1.59
LB.

Weiners

ALLGOOD
STYLE
1 LB. PKG.

89¢

A&P Grade 'A' Canned Foods Sale!

A&P GRADE 'A'

• **Cut Wax Beans** 15 oz.
• **Sliced Carrots** 16 oz.
• **Creamed Style Corn** 17 oz.

4.89¢
CANS

FRENCH
STYLE
• **Green Beans** 15 oz.
• **Potatoes** WHOLE OR SLICED - LB.
• **Sliced Beets** 16 oz.
• **Sauerkraut** 15 oz.

4.99¢
CANS

Stock Your Pantry Now!

FROZEN

Morton's Dinners

11 oz.
PKG.

2.89¢

Clip This
Strip of
Coupons

**SAVE
OVER \$28!**

VALUABLE COUPON
THIS COUPON WORTH 50¢ TOWARDS THE PURCHASE OF
Taster's Choice Coffee \$1.68
INSTANT 9 oz. JAR YOU PAY
Limit one coupon per family.
Redeemable thru Sat. Feb. 9, 1974. MFG COUPON

VALUABLE COUPON
THIS COUPON WORTH 50¢ TOWARDS THE PURCHASE OF
A&P Freeze Dry Coffee \$1.49
INSTANT 9 oz. JAR YOU PAY
Limit one coupon per family.
Redeemable thru Sat. Feb. 9, 1974. MFG COUPON

VALUABLE COUPON
THIS COUPON WORTH 50¢ TOWARDS THE PURCHASE OF
Maxim Instant Coffee \$1.69
9 oz. JAR YOU PAY
Limit one coupon per family.
Redeemable thru Sat. Feb. 9, 1974. MFG COUPON

VALUABLE COUPON
THIS COUPON WORTH 12¢ TOWARDS THE PURCHASE OF
Wheaties Cereal 51¢
BIG G 18 oz. BAG YOU PAY
Limit one coupon per family.
Redeemable thru Sat. Feb. 9, 1974. MFG COUPON

VALUABLE COUPON
THIS COUPON WORTH 20¢ TOWARDS THE PURCHASE OF
Gold Medal Flour \$1.69
16 LB. BAG YOU PAY
Limit one coupon per family.
Redeemable thru Sat. Feb. 9, 1974. MFG COUPON

VALUABLE COUPON
THIS COUPON WORTH 20¢ TOWARDS THE PURCHASE OF
Easy On Spray Starch 47¢
22 oz. CAN YOU PAY
Limit one coupon per family.
Redeemable thru Sat. Feb. 9, 1974. MFG COUPON

VALUABLE COUPON
THIS COUPON WORTH 10¢ TOWARDS THE PURCHASE OF
Betty Crocker Toastwiches 65¢
FROZEN FIVE VARIETIES, 6 oz. YOU PAY
Limit one coupon per family.
Redeemable thru Sat. Feb. 9, 1974. MFG COUPON

VALUABLE COUPON
THIS COUPON WORTH 9¢ TOWARDS THE PURCHASE OF
Eight O'Clock Coffee 86¢
100% BRAZILIAN 1 LB. BAG YOU PAY
Limit one coupon per family.
Redeemable thru Sat. Feb. 9, 1974. MFG COUPON

VALUABLE COUPON
THIS COUPON WORTH 30¢ TOWARDS THE PURCHASE OF
Eight O'Clock Coffee \$2.45
100% BRAZILIAN 3 LB. BAG YOU PAY
Limit one coupon per family.
Redeemable thru Sat. Feb. 9, 1974. MFG COUPON

Prices effective thru Saturday, February 2, 1974. Items offered for sale are not available to other retail dealers or wholesalers. Not responsible for typographical errors.

BCHS Sports

8th Grade Basketball — BCHS at Shaker, 3:45 P.M.
 JV & Varsity Wrestling — Averill Park at BCHS, 4 P.M.
 Frosh Wrestling — BCHS at Scotia, 3:45 P.M.
 Bowling — BCHS vs. Shaker at Guilderland, 3:45 P.M.

WEDNESDAY, FEBRUARY 13

8 P.M., meeting, Hamagrael School Parent Advisory Committee on Career Education, High School Administrative Room.

8 P.M., meeting, BCSD Board of Education, Ed. Services Center. Public welcome.

BCHS Sports

Varsity Swimming — Shaker at BCHS, 4:15 P.M.

1 P.M., meeting, Bethlehem Garden Club, Beth. Public Library. Guest: Deonne Orvis.

7:45 P.M., meeting, St. Thomas Altar Rosary Society.

THURSDAY, FEBRUARY 14

8 P.M., meeting, Elsmere Fire Auxiliary, followed by entertainment.

Happy St. Valentine's Day!

BCHS Sports

Bowling — BCHS vs. Burnt Hills at Niskayuna, 3:45 P.M.

FRIDAY, FEBRUARY 15**BCHS Sports**

JV & Varsity Basketball — Scotia at BCHS, 7 P.M.
 Frosh Basketball — Columbia at BCHS, 3:45 P.M.
 Varsity Wrestling Tournament at Shaker
 Sec. 1 & 2 Indoor Track, 4 P.M.
 Girls' Basketball — Shenendehowa at BCHS

8 P.M., Second Annual Glenmont Wine Festival, The Center Inn, Rt. 9W, Glenmont, contact: Roger Trautman, Glenmont Liquor Store.

7:30 P.M., Color Slide Show, Delmar Camera Club, at Bethlehem Public Library, "Game Parks of East Africa."

SATURDAY, FEBRUARY 16

4:30 to 7 P.M., Seventh Annual Fresh Ham Dinner, Coeymans Hollow Trinity United Methodist Church, Rt. 143.

12:30 P.M., American Indian Luncheon, Mrs. Alden Merrick, Lake Ave., Albany.

SUNDAY, FEBRUARY 17

2:30 P.M., Film, "The Mother and the Law," Albany Institute of History and Art, Washington Ave., Albany.

2 P.M., Movie, "The Lone Ranger," Large Community Room, Bethlehem Public Library.



Douglas G. Marone
 DISPENSING OPTICIAN

1 Delaware Plaza (Facing Delaware Ave.)

Open 10 to 5 Daily
 Saturday 10 to 2
 Evenings by Appointment

TEL. HE 9-9191

We'll make your
 motor
 sing



- Engine Tune-up
- Front End Alignment
- Automatic Transmission Service
- Modern Equipment
- Skilled Mechanics

BAILEY'S GARAGE

Phone Delmar HE 9-1446
 Oakwood Rd., Elsmere

Enjoy Spring in the Orient

Escorted departure from
 Albany on May 2, 1974

PERSONALLY ESCORTED BY BOB IRISH OF JOHN G. MYERS TRAVEL
 WITH A LOCAL NATIVE JOINING US IN EACH CITY

FEATURING:

- Round trip economy class jet air transportation based on Group Inclusive Tour Basing (GIT) air fares.
- Accommodations with private bath at deluxe hotels.
- Full American Breakfasts & Dinners.
- "Bullet Train" to Kyoto.
- Meeting and transfer services between airports, hotels and train stations, including portage.
- Transfer of two pieces of baggage up to 44 lbs. by air and on land.
- Comprehensive sightseeing program in each city.
- Optional Table d'hote Dinner plan.
- Optional Honolulu Extension.

\$1347.00

Single Supplement \$135.00 • Honolulu Extension \$50.00



37 North Pearl St.
 Albany, New York
 434-4131

210 Delaware Avenue
 Delmar, New York
 439-7671



Mid-Winter Savings On Your Spring Paint Needs!



SERVISS INTERIOR LATEX
2 GALLONS FOR

5⁰⁰
REG. 3.49 GAL.

Paint your rooms at budget prices. For all type walls and ceilings. Fully washable. Dries in minutes. Quick water clean-up. In White & Pastel Colors.

WASHABLE LATEX FLAT

Better hiding and washability. Applies easily, dries smoothly in 30 minutes. Water cleans tools. For all type walls and ceilings. White and 8 colors. Custom colors slightly higher.

4⁹⁹

GALLON
Reg. 5.19



**SCRUBBABLE, NON-DRIP
FLAT INTERIOR LATEX**

5⁹⁷
GAL. REG. 8.29

As advertised in "House & Garden" and "Better Homes"! Resists dirt and soiling. One coat covers most surfaces. Extra washable. White & 48 Colors. Custom colors slightly higher.



You save money on Tru-Test Paints because we own two factories.



FREE! "Let's Live Color" decorating booklet, yours for the asking.

**The
Light
Touch**

A space explorer is a fellow driving around town looking for a place to park.

Husband, studying budget, to wife: "We should have saved during the recession so we could live through this prosperity."

Do you realize we're living in a world where buttons smile and people don't?

Everyone smiles at Delmar Lumber. See us for all your painting needs.

True Value MID WINTER '74
HARDWARE STORES

29¢ **EVEREADY**
39¢ Value
PACK OF 2 "D" BATTERIES
For flashlights, tape recorders, toys. C950-2

Limit: One Coupon Per Adult Customer.

True Value MID WINTER '74
HARDWARE STORES

99¢ WITH COUPON
CARBIDE-POINT SCRIBER
Permanently marks metal, glass, etc., to discourage theft. CM100

Limit: One Coupon Per Adult Customer.

True Value MID WINTER '74
HARDWARE STORES

General Purpose Household Oil Or Lighter Fluid YOUR CHOICE

With Coupon **14¢**
Get either one 4 oz. TT-1/TT-2

Limit: One Coupon Per Adult Customer.

True Value MID WINTER '74
HARDWARE STORES

With Coupon **88¢**
PROPANE FUEL
For standard torches. Meets D.O.T. specs. 26.7 oz. TT175

Limit: One Coupon Per Adult Customer.

DELMAR LUMBER

340 Delaware Avenue
Delmar.
Phone 439-9968

MONDAY, FEBRUARY 18

Winter Vacation for BCSD students
— normal starting time will be resumed on reopening Mon., Feb. 25.

TUESDAY, FEBRUARY 19

Happy Birthday, Annina!

7:30 P.M., Color Slide Show, Delmar Camera Club at Bethlehem Public Library, "Views from Here and There."

THURSDAY, FEBRUARY 21

7:30 P.M., Color Slide Show, Delmar Camera Club, at Bethlehem Public Library, "On the Viking Trail."

CHURCH DIRECTORY

FIRST REFORMED CHURCH OF BETHLEHEM
Route 9W, Selkirk

Parsonage & Study Phone — 767-3406
Office Phone — 767-2243

Staff

Jack Hilbrands, B.D. Pastor
Mrs. Marlin Fuller Organist & Choir Director
Mrs. Peter VanKempen Church School Superintendent

Sunday Schedule

9:30 A.M. — Sunday School
11:00 A.M. — Worship Service
7:00 P.M. — Youth Fellowship

GLENMONT COMMUNITY CHURCH (Reformed)
3 Weiser St., Glenmont

Rev. Jack Cooper, Pastor

10 A.M. — Worship Service
11:15 A.M. — Sunday School
Everyone Welcome
("Coffee and . . ." after service).

FIRST CHURCH OF CHRIST, SCIENTIST

555 Delaware Ave., Delmar
439-2512

Sunday Services at 11 A.M.
Sunday School also at 11 A.M. for those under the age of 20

Wed. Testimony Meetings 8 P.M.

Reading Room at
397 Kenwood Avenue

Daily except Sun. and holidays
11:30-4:00

Everyone Welcome!

JOIN "THE REAL ESTATORS"

We have the listings —
plenty of open houses —
plush surroundings —
highest commission paid —

It's a strong foundation.
Help us build our sales force. Call Marshall Danto for a confidential interview.

439-7625

heritage

SEPTIC TANK - CESSPOOL CLOGGING CAN NOW BE PREVENTED!

LIVINGSTON, N. J. — An amazing bacterial discovery that prevents clogging of septic tanks and cesspools with but a single, safe and easy-to-use yearly treatment, has been developed by the FX-Lab Co., Livingston, N. J.

Sluggish systems and drainfields can also be restored to normal by fast acting bacterial cultures.

They are also recommended as a "starter" to seed newly cleaned out or newly installed septic tanks and cesspools.

These proven FX bacterial organisms, known as FX-4 for septic tanks, FX-7 for cesspools, and FX-11 for sluggish septic tanks and cesspools are available locally.

Available also, is a free booklet "The Story of Willie Bacteria, or How To Take Care of Your Septic Tank or Cesspool" from:

DELMAR LUMBER

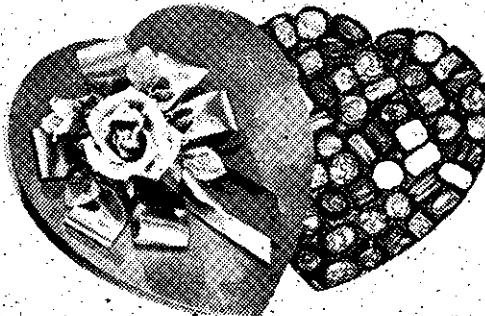
340 Delaware Avenue
Delmar
Phone 439-9968

Russell Stover
CANDIES



ASSORTED CHOCOLATES

VALENTINE'S DAY ♥ FEB. 14



FANCY HEARTS
FROM \$1.10

DENBY'S

Delaware Plaza

You'll love~

Mother Hubbard's Cupboard
253a Delaware Ave.
Delmar, N.Y.

Valentines

FEBRUARY SALE WOOLRICH CLOTHING (men's)



30% off



TAYLOR & VADNEY

303 CENTRAL AVENUE, ALBANY

472-9183

NOW IN PROGRESS!

Kelly Clothes/621 River St./Troy, N.Y./272-2022



MEN'S FALL & WINTER CLOTHING

WERE TO

Suits, \$149.75

Topcoats & Overcoats, \$165.00

Sport Coats, \$115.00

Slacks, \$28.50

Shirts, \$12.00

NOT EVERY SIZE
IN EVERY COLOR...
BUT KELLY IS
SWEEPING CLEAN
A SELECT GROUP OF
FINE FALL & WINTER
CLOTHING.
SHOP EARLY
FOR BEST PICK

NOW

\$69.90 & \$89.90

\$79.90 & \$89.90

\$39.90 & \$59.90

\$5-\$6-\$9

\$2

Plus! Many other unadvertised specials

These are the BEST SALE BUYS in over 43 years!

And remember, there's parking available

We're open Tues., Thurs. & Fri. 'til 9 P.M.
Weds. & Sat. 'til 5:30 (Closed Mondays) Call 272-2022

TROY'S FAMOUS FACTORY STORE/ANNUAL CLEAN SWEEP SALE



DELMAR REFORMED CHURCH
(founded 1841)

386 Delaware Ave., Delmar, N.Y.
Worship & Church School 10 A.M.
Nursery Care 10 to 11 A.M.
Coffee Fellowship 11 A.M.
Church School
dismisses 11:30 A.M.
Youth Groups 7:00 P.M.

Pastors: Gerard J. Van Heest,
David L. Cooper

BETHLEHEM LUTHERAN CHURCH

85 Elm Ave., Delmar

Rev. Paul H. Gassman

9:15 A.M. Sunday School and Bible
Classes
10:00 A.M. Coffee Hour
10:30 A.M. WORSHIP SERVICE
(Nursery Care)
1st & 3rd Sundays — Communion

FIRST UNITED METHODIST CHURCH

428 Kenwood Avenue, Delmar
Phone 439-9976

Worship Service: 9:15 & 11 A.M.
Sunday
(Nursery and Child care provided)

Coffee Fellowship at 10:15
Church School: 9:15 & 11, Sunday
4:00 P.M., Tues. (Grades 1-5)

Sr. U.M.Y.F. 6:15 P.M., Sunday

Pastor: Robert B. Thomas
Thomas D. Peterson, Sang Hahn

FIRST UNITARIAN CHURCH of ALBANY

405 Washington Ave., Albany

The Rev. Nick Cardelli, Jr.
Office phone: 463-7135

10:30 A.M. — Sunday Service and
Church School
11:30 A.M. — Coffee Fellowship

DELMAR PRESBYTERIAN CHURCH

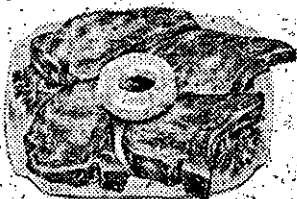
585 Delaware Avenue
Delmar, New York
439-9252

Worship and Church School
— 10:30

Youth Fellowship — 6:30

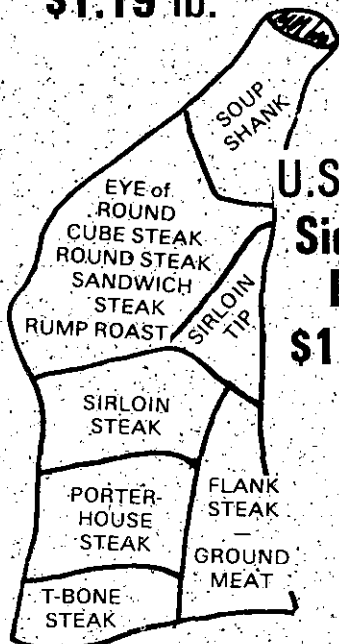
George H. Phelps — Pastor
Joseph V. Farrell — Organist

— All are welcome —

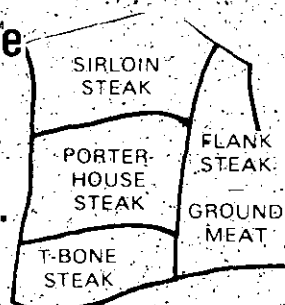


SERVING THE TRI-CITY AREA

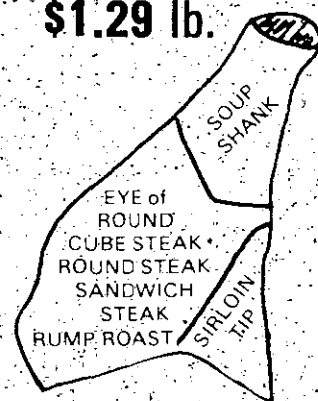
**U.S. Prime
Hindquarters
\$1.19 lb.**



**U.S. Prime
Drop Loin
of Beef
\$1.29 lb.**



**U.S. Prime
Full Round
of Beef
\$1.29 lb.**



**U.S. Prime
Sides of
Beef
\$1.05 lb.**

**ALL MEAT CUT WRAPPED, FROZEN
AND DELIVERED TO YOUR HOME
AT NO EXTRA CHARGE**

PHONE 439-9273 or 439-5398

SHOP FALVO'S

**at THE STONEWELL SHOPPING CT.
1968 NEW SCOTLAND RD.
SLINGERLANDS, N.Y.**

**WHAT
ARE
YOU
PAYING?**

5 lb. GROUND CHUCK	\$1.09 lb.
5 lb. SHORT RIB	99¢ lb.
5 lb. JONES SAUSAGE	1.49 lb.
5 lb. PORK CHOPS	1.39 lb.
5 lb. Frozen LOIN LAMB CHOPS	1.39 lb.
5 lb. ITALIAN SAUSAGE	1.29 lb.
5 lb. CHICKEN LEGS	69¢ lb.

**BONUS BUY
10 lb. Cut-Up
CHICKENS**

\$4.90

Grade A Only
Sold at Falvo's

**40 lb. FAMILY
APPROX. PACKAGE \$52.29
BEEF — PORK — LAMB — POULTRY APPROX.**

OUR NEW

NOW OPEN!

RETAIL OUTLET M.D.A. Floor Covering, Inc.

RIVER RD., GLENMONT

463-8845, 463-0034

OVERSTOCK SALE

from our MARCELLO TILE WAREHOUSE

STARTS JAN. 17

WE NEED STORAGE SPACE — HELP US AND SAVE ON

FAMOUS LEE CARPETS

Benefactor Series available in gold, green, blue tones; gold-orange, neutral tone. Reg. \$9.95; **NOW \$7.79 sq. yd.**

Faculty Series available in gold, tortoise shell, beige — Reg. \$11.95; **NOW \$9.49 sq. yd.**

Includes 32 oz. PAD with either carpet.

INSTALLATION EXTRA — MIN. 20 YD. PURCHASE

USE YOUR MASTER CHARGE

and

NO WAX ARMSTRONG DESIGNER SOLARIAN VINYL

Reg. \$14.50 per sq. yd.;

NOW \$10.00 PER. SQ. YD. AND

this includes installation. Get in on these special cuts and throw away the wax applicator. 4 beautiful colors to choose from.

MIN. 20 SQ. YD. PURCHASE

**ARMSTRONG VINYL TILE — 12" x 12" x 1/8" thick
20¢ EACH**



Hey Gals!
for full Nutrition

BUY

Freikofer's

**BATTER-WHIPPED
SUNBEAM BREAD**

Available Almost Everywhere



JOTTINGS by Joni

Is there a solution?

One night this past week, my husband, Bob and I, were confronted with a puzzle by friends of ours, John and Bea Keleher. We've yet to figure it out and would appreciate your help. Here's the puzzle:

Draw 6 boxes as follows and label the top 3, G, L, and W (Gas, Light, and Water).

G	L	W

Without crossing any lines you must get gas, light and water to each house. When you finish you should have three lines to each house, one from the gas, one from light and one from water. We got all but one line.

If anyone comes up with the solution, please send it to:

JONI
c/o SPOTLIGHT
544 Delaware Ave.
Delmar, N.Y. 12054

Good Luck!

Navy News!

Navy Hospitalman Recruit
Edward J. Pugliese, son of



Edward
Pugliese

Mr. and Mrs. Edward S. Pugliese, of South Bethlehem, was graduated from recruit training at the Naval Training Center, Great Lakes, Illinois.

Ed is a 1973 graduate of Ravena-Coeymans-Selkirk Central High School. He is scheduled to report to Hospitalman Corpsman A. School at the Naval Training Center.

Congratulations, Ed!

Last evening, at the monthly meeting of the Bethlehem Art Association, Mrs. Fran Martin spoke to the members about "Lithography and Printing."

AGWAY FROZEN FRUIT & VEGETABLE SALE

FOR CANNING OR FREEZING

Sliced Strawberries in sugar - 30 lbs.	\$15.30
Sliced Peaches in sugar - 30 lbs.	12.10*
Apples sliced in sugar - 30 lbs.	13.10
Blueberries no sugar - 20 lbs.	12.40
Rhubarb no sugar - 28 lbs.	7.30
Pineapple, crushed, no sugar - 30 lbs.	9.90*
Peas 12 boxes 20 oz. ea. 15 lbs.	6.30*
Corn 12 boxes 20 oz. ea. 15 lbs.	6.30*
Green Beans, cut, 12 boxes 2 1/2 lbs. ea. 30 lbs.	10.90
French Fries, 12 boxes 2 lbs ea. 24 lbs.	7.35
Orange Juice Concentrate, 24 - 12 oz. cans - case	10.90
Grape Juice Concentrate, 24 - 12 oz. cans - case	12.90
Lemonade Concentrate, 24 - 12 oz. cans - case	7.30

*LIMITED QUANTITIES AVAILABLE

Due to national weather conditions, all orders subject to the availability of fruit & vegetables at the time of pick-up.

TO ORDER CALL YOUR LOCAL AGWAY
BY WEDNESDAY, FEBRUARY 13, 1974

283-5400

MUST BE PICKED UP AT
YOUR LOCAL AGWAY STORE
BETWEEN

9:00 A.M. and 5:00 P.M. ON

THURSDAY, FEBRUARY 21, 1974

Enjoy frozen sunshine
from Florida...
**SEALD-SWEET
ORANGE JUICE**



12 oz.

100% orange juice in handy concentrate form. America's favorite breakfast drink at great savings!

NONE SOLD WITHOUT ADVANCE ORDER

Enjoy "fresh off the farm" fruits &
vegetables all year long... and save!

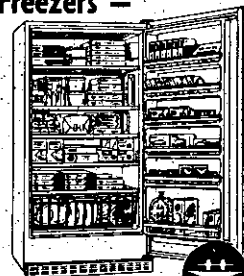


Use Agway's 3 Convenient Plans: Master Charge, BankAmericard, Telmark

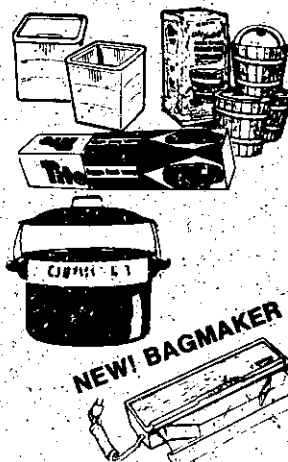
AGWAY HOME & GARDEN CENTER
RTS. 4 & 40. TWIN LIGHTS, DEFREESTVILLE

Open Mon. thru Fri. 8 to 9, Sat. 8:30-5:30 — 283-5400

Check Our Complete
Line Of Hotpoint
Freezers —



Frozen Food
Containers
and Accessories.



NEW! BAGMAKER



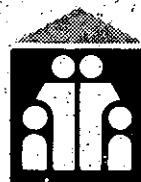
Our heart belongs to you

especially on Valentine's day.

A beautiful heart pendant set with a deep red stone is our way of saying *thank you* to all our friends. It's yours with any banking transaction at any of City and County Savings Bank's four offices on Valentine's Day.

Come in Thursday, February 14th, and take our hearts.

We have plenty . . . but come in early, if possible. Before we get to the bottom of our hearts.



**CITY & COUNTY
SAVINGS BANK**
FOR YOU AND YOUR FAMILY

Member F.D.I.C.

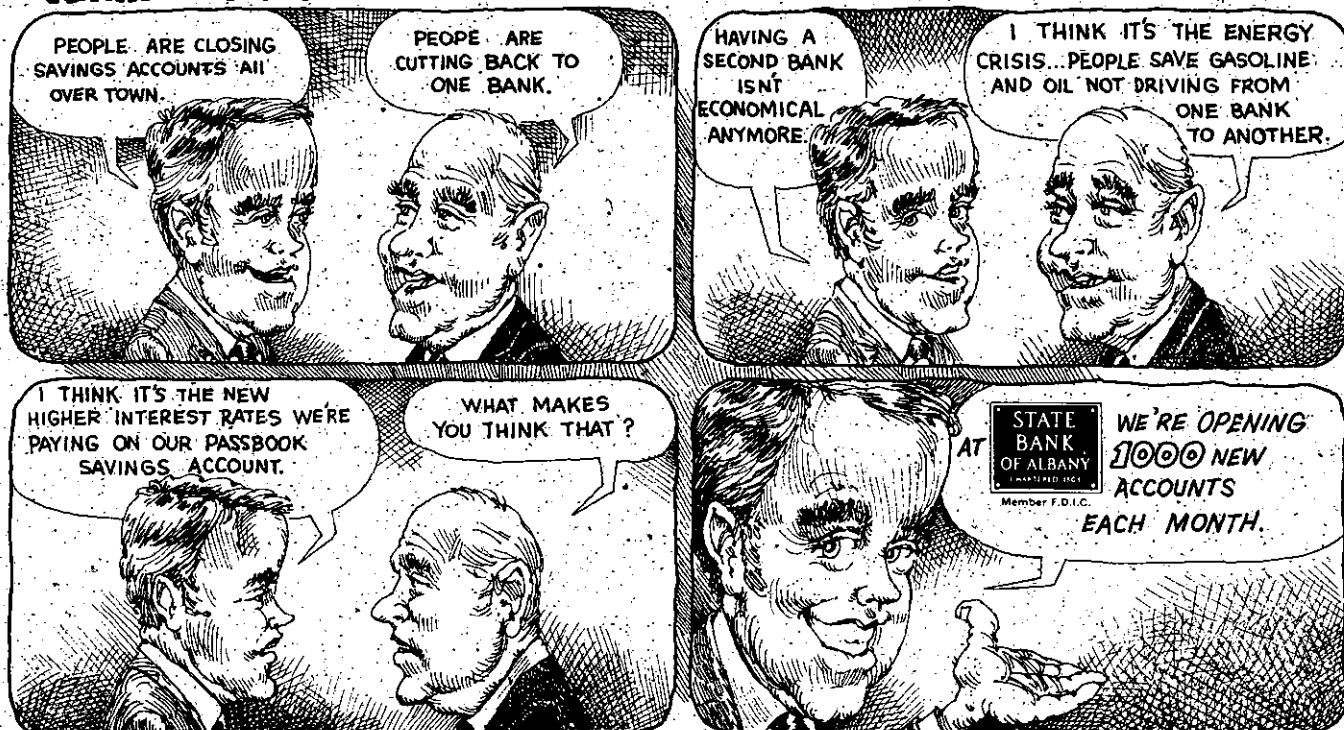
DOWNTOWN ALBANY
100 State Street

UPTOWN ALBANY
301 New Scotland Avenue
(at Ontario Street)

BETHLEHEM
163 Delaware Avenue, Delmar
(Opposite Delaware Shopping Plaza)

ROTTERDAM
1900 Altamont Avenue
(near Curry Road)

Affairs of State

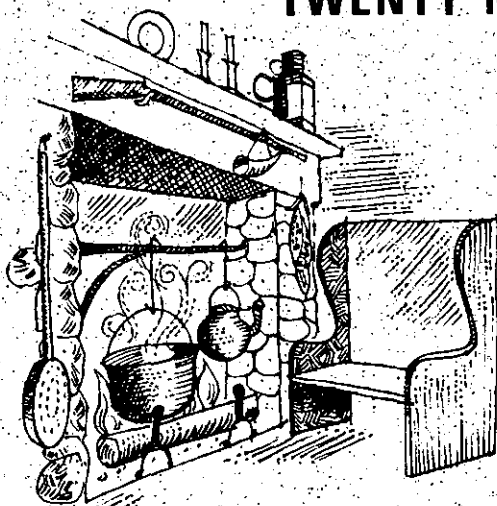


THE 1776 GIFT SHOPPE

TWENTY MALL

GUILDERLAND, N.Y.

Grand Opening



Browse at your leisure through our unique collection of pine furniture, decorative accessories and gift items for the colonial home.

Early American Gifts & Accessories

REGISTER TO WIN One of Ten Prizes

TRESTLE COFFEE TABLE

Drawing Feb. 16 at 8 p.m.

RUBY HURRICANE LAMP

COLONIAL SPICE RACK with Spices

GINGHAM FLORAL ARRANGEMENT

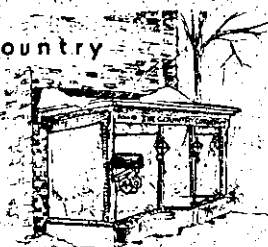
YORKTOWNE STONEWARE - Service for 4

VERMONT PURE MAPLE SYRUP - 1 Pint to 4 winners

PILLAR CANDLE ARRANGEMENT

handcrafted originals for

Country
corner



st. valentine's
day.

you can expect
the unexpected
at

The Country Corner
The Unique Boutique.

Open Mon. thru Sat. 10-6. • Thurs. evenings 'til 9
Telephone 439-6671 • 449 DELAWARE AVENUE, DELMAR
(Next door to Delmar Public Library)

Remember — Whenever you
are thinking of me I am also
thinking of you, FOR EVER.

SLINGERLANDS NURSERY SCHOOL

A few openings still available
for '74-'75 enrollment.

THREE AND FOUR-YEAR-OLDS

For Information —
Write:

Box 1, Slingerlands, N.Y.

or call:

Arlene Gratzel — 439-2879

Mrs. Martin is an art teacher
at the Junior College of Al-
bany.

Everyone enjoyed hearing
how prints are made. Thank
you, Fran!

Wedding bells...

Mr. and Mrs. Bruce Mac-
Donald of Delmar announce
that their daughter, Priscilla
Mary, is engaged to Eugene M.
Schmidt, son of Mr. and Mrs.
Harold W. Schmidt, of Castle-
ton.

Priscilla is a graduate of
Bethlehem Central High School
and attends Cobleskill Agri-
cultural and Technical College.
Eugene is a graduate of Colum-
bia High School. He is em-
ployed at the Environmental
Health Center of the New York
State Department of Health,
Division of Labs and Research.

...and more Wedding bells.

Mr. and Mrs. Nelson J. Wil-
liams of 30 Wilshire Drive,
Delmar, have an-
nounced the engage-
ment of their
daughter,
Joanne Marie,
to Allan L.
Stafford, son
of Mr. and
Mrs. Richard
Stafford of
Peru, N.Y.



Joanne
Williams

Joanne is a graduate of Beth-
lehem Central High School and
of Cobleskill Agricultural and
Technical College. She is an
associate dietician at Child's
Hospital.

Allan is a graduate of Peru
Central High School and of
Cobleskill College. He is em-
ployed by Staffordshire Farms,
Inc.

They have planned a Septem-
ber '74 wedding.
Success to both couples.

Be creative
be correct

**COLOR STYLE
YOUR HOME**

with

**PRATT & LAMBERT
PAINTS**

in exclusive Calibrated Colors®



Ed Dillon

EMPIRE PAINT COMPANY
142 Central Avenue
Albany, New York 12206
Phone: 449-5400

Van Curler Music Company

DOUGLAS A. MOORE
TELEPHONE 465-4576

"VAN CURLERGRAM"

The Van Curler Music Co., a landmark in down-
town Albany for many years, is now open for busi-
ness at its **new location, 296 Delaware Ave., Al-
bany** (3 doors from the Delaware Theatre)

In an effort to better service our sheet music cus-
tomers, we plan to concentrate our efforts in that
field, & discontinue records, tapes & related items.
A complete & expanded line of sheet music, books,
instruction material, & musical accessories, will
be available with increased accessibility, because
of the elimination of parking problems.

The record & tape department is being taken over
by Irv Cohan & will be located at **70 Central Ave-
nue**, under the name of **Metronome Record Shop**,
on approximately the same date. Irv is the gentle-
man who has so ably managed the Van Curler Rec-
ord & Tape Dept. for over 20 years.

We wish to thank all our customers for their pa-
tronage, over the years, & sincerely hope that we
may continue to serve you at these new & more
convenient locations.

Very truly yours,
Douglas A. Moore

The Spotlight Goes to School

Winter Study

Deborah Landau, a freshman at Kirkland College, is observing two lawyers, Margrethe Powers and Ruth Katz as her winter study. She is the daughter of Mr. and Mrs. Joseph Landau of Meadowland Street, Delmar, New York.

This year there are five hundred-fourteen Kirkland students registered for winter study. Two hundred and thirteen of those registered are studying on campus while one hundred

and seventy-five are doing projects away from the college.

RCS Cracks Down

"Incidents of misconduct by students on RCS buses seems to be a growing problem. A recent check by the school administration reveals that drivers are reporting more and more cases of students engaging in improper behavior. Shoving and pushing, shooting paper clips and "spit balls," use of obscene language and general disrespect for their fellow classmates and bus drivers are some of the complaints being registered by bus drivers.

As a result of these reports

the principals have scheduled a special assembly with their students to stress again the need for proper behavior and conduct on RCS buses. Students will be reminded that drivers are authorized to file reports of misconduct on any student who misbehaves. Such reports will be submitted to the principal who, in turn, can report severe cases to the Superintendent of Schools. If, in the opinion of the Superintendent, conduct is so poor that the safety of others on the buses is endangered, the Superintendent may then deprive students of bus riding privileges for as long as is necessary.

In a recent statement on the matter Dr. Frank J. Filippone, Superintendent of School, commented: "To my mind proper behavior on the bus is more important than in the classroom. Poor behavior on the bus endangers the lives of anywhere from 30-60 children. The school cannot, and will not tolerate disregard for rules and proper behavior on the buses. Bus drivers have been instructed to report cases of misbehavior and work with principals and my office to see that such behavior is not repeated. Conditions on our buses must be kept safe for the students riding on them."

Don't settle for less



than
Karpet-Kare®
Carpet Cleaning

- Restores the pile
- Deep-down vacuums
- Thoroughly and evenly shampoos carpet — removes soil . . . brightens color

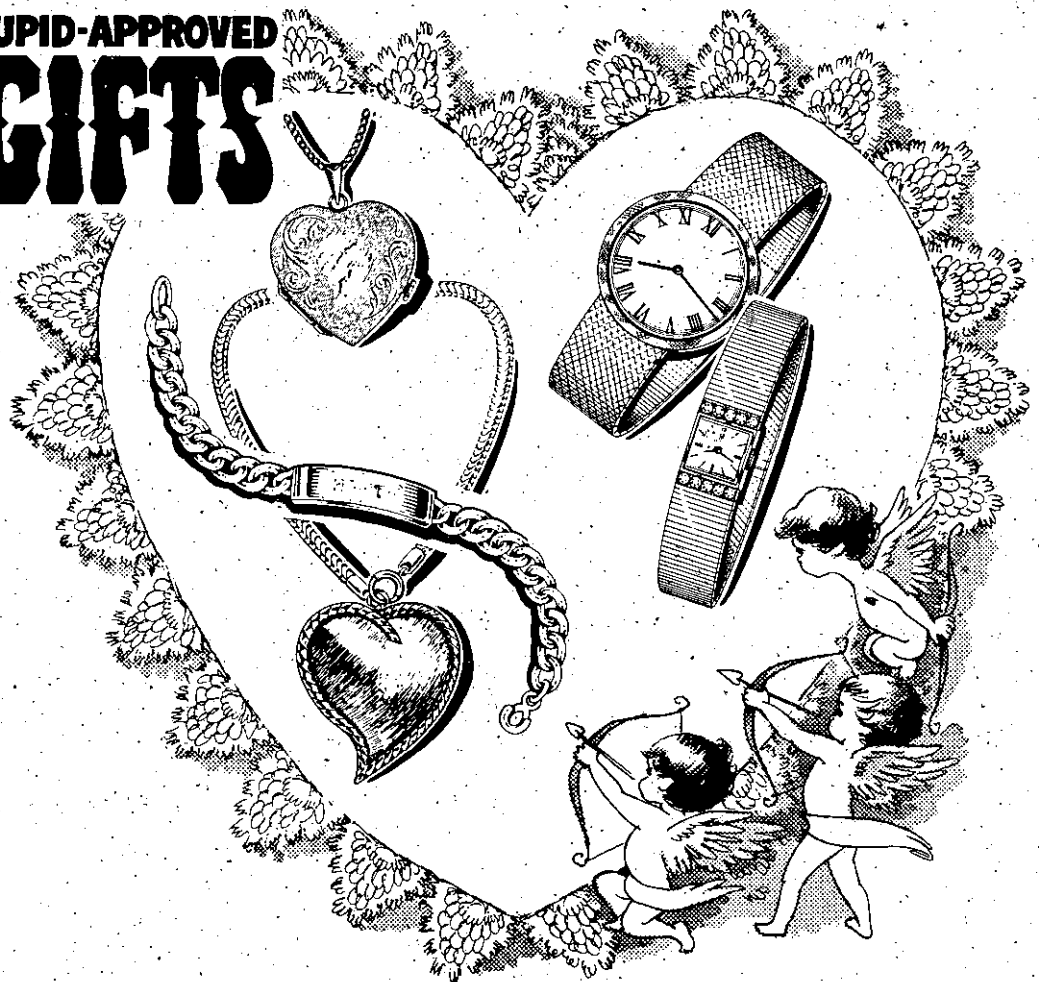
Endorsed by
Bigelow-Sanford Carpet Co.

Call us for a free estimate

LEKTRO-KLEEN CO.

27 SHERMAN STREET
ALBANY, NEW YORK 12210
PHONE HO 5-7870

CUPID-APPROVED GIFTS



Heart shape lockets, flower or butterfly pins, delicately engraved bangle bracelets . . . oh, so many delightful ways to tell your Valentine how much you care.

HARRY L. BROWN Jeweler

Thistle Gift Shop

363 DELAWARE AVENUE AT 4 CORNERS, DELMAR

**“There’s only one thing
more important to me than
The Bank’s new VIP Bank Account
The people who’ll be using it**

LESTER W. HERZOG, JR.
President, The Bank



The Bank's VIP Bank Account gives our customers
all these vital banking services in one super-convenient

count.


”


S
account.


ndly offices make us


t Next Door.


It's a whole new way to do all your banking in one place, with one sensational account. We think it's the best, most complete banking service around. And here are some of the reasons we feel this way:


 **CHECKING.** Your VIP account includes a no-minimum-balance checking account. And your VIP checking account includes personalized checks in your choice of five colors and three styles. It also includes an automatic \$500 Cash-Reserve Credit* against overdrafts. And you can cash checks up to \$100 without any delays—at over 55 convenient offices of The Bank.


 **MASTER CHARGE.*** Your VIP account includes a special Master Charge card—a card that distinguishes you as a special customer of The Bank. Your VIP Master Charge card entitles you to a cash advance that you can get at any office of The Bank.


 **SAVINGS ACCOUNT.** As part of your VIP account, you get a VIP day-of-deposit-to-day-of-withdrawal savings account with interest paid on balances over \$25. At your option, there can be convenient automatic transfers into your savings account from your checking account.

 **A VIP STATEMENT.** Every month, you get a single easy-to-understand statement. We'll even list your checks in the sequence that you write them, so when you balance your checkbook everything will be in order.

 **TRAVELER'S SERVICES.** As a very important customer and a VIP account holder, you can obtain Traveler's Checks—and buy or sell any foreign currency—without service charges. (We'll also send you announcements of how you can take some great bargain trips.)

 **PREFERRED INTEREST RATES.** Because you're a VIP customer, The Bank offers you VIP rates. Whenever you get a personal installment loan of a thousand dollars or more, you'll be charged an annual percentage rate below the prevailing rate of interest.

 **SAFE DEPOSIT BOX.** Part of the value of your VIP account is a place at The Bank to store your valuables. And as a bonus for VIP customers, we're offering safe deposit boxes free for the first year at most offices.

 **OTHER BANKING SERVICES.** Whenever you need important services such as money orders, official bank checks, certification, or a notary public, they're yours *without service charge*—because you're our VIP customer.

In addition to making your banking less of a problem, the VIP account can make your banking less expensive. You get all of these important banking services for just \$3 a month. This modest cost is conveniently charged to your checking account. And if you're a typical customer, you'll save many times that amount every month.

So, at your earliest opportunity, take a moment to visit one of The Bank's more than 55 convenient offices and find out how to open a VIP Bank Account. We'll treat you like the Very Important Person you are.

For more information, telephone any office of The Bank.

The Bank

National Commercial Bank
& Trust Company

*Normal finance charges prevail on Master Charge and Cash-Reserve Credit Accounts.

Member F.D.I.C.

NOW ON SALE

GENUINE ENGLISH BONE CHINA

Direct from Staffordshire, England, to Grand Union
for you—at far less than you'd expect to pay

Cake/Sandwich
Plate perfect for
sandwiches,
desserts, salads.



Springtime



Country Garden

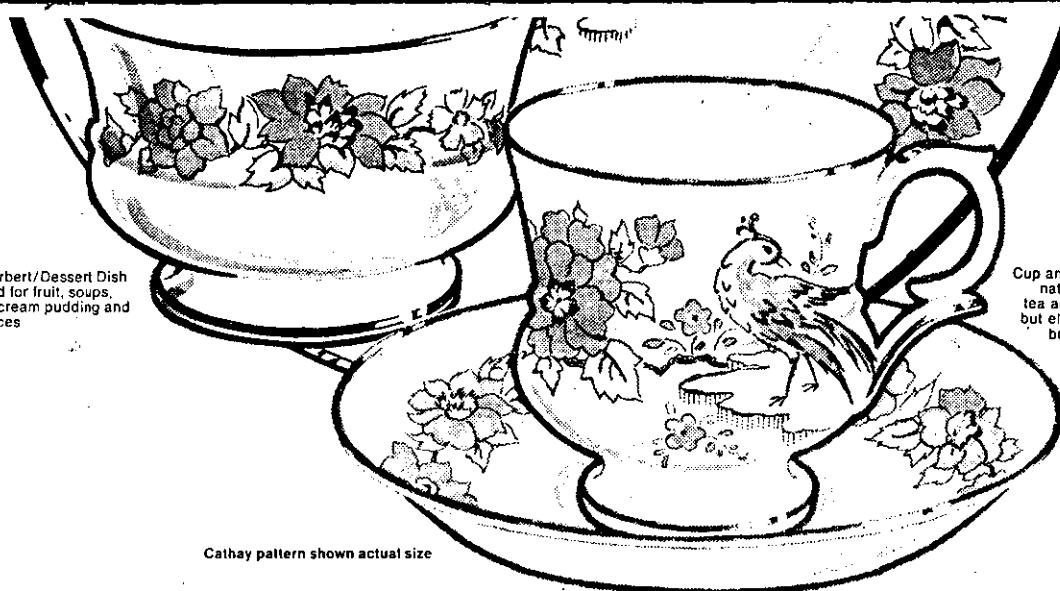


The Spotlight





Flower Basket



Cathay pattern shown actual size



Mandarin



Bouquet

Sherbet/Dessert Dish
used for fruit, soups,
ice cream pudding and
sauces

Cup and Saucer
naturally for
tea and coffee
but elegant for
broths too!



Iris

Your choice

- Cup and Saucer
- 8" Sandwich/Cake Plate
- Sherbet/Dessert Dish

ONLY

166

with each \$5.00 purchase,
2 with \$10.00, etc.

Compliment Your Guests Entertain With Elegance

English Bone China has been the
prized possession of Kings and
Collectors for over 200 years.
Now you can display it for its
beauty and use it with pride.

Enjoy It—You Can Afford It!

Look for our English Garden
Display and pick up your
cup and saucer, 8" cake/
sandwich plate and
sherbet/dish every time
you shop Grand Union.



Wild Flowers

Choose from Eight Lovely Patterns

Brilliant floral patterns accent the white,
translucent quality of genuine English Bone
China. MIX patterns and serve each guest
a different bouquet setting or MATCH a full set
of your favorite pattern. This exquisite china
was designed and hand crafted exclusively
for Grand Union at Stoke-on-Trent, Staffordshire,
England, famous the world over for the finest Bone China.



Start Your Collection Today

These beautiful dishes are perfect for lunches,
afternoon gatherings and card parties, adding just
the right touch of elegance when you serve
dessert and coffee to family and friends in the
evening. Here's a good idea, brighten your
family's breakfast on those special mornings...
with practical, durable, Bone China.

You'll ALWAYS Find Your Best Food Buys Here!

ELSMERE —
Mon. thru Sat. 9 A.M.-9 P.M.
Closed Sunday

VOORHEESVILLE — 5 Maple Rd.
Mon. thru Sat. 9 A.M.-9 P.M.
Sunday — 9 A.M.-6 P.M.

GLENMONT TOWN SQUIRE SHOPPING CENTER — Rt. 9W
Mon. thru Sat. 9 A.M.-9 P.M.
Closed Sunday

QUALITY, VALUE, VARIETY PLUS TRIPLE-S BLUE STAMPS

RIGHT of CHOICE!

BUYING GRAND UNION'S OWN FINE BRANDS & NATIONALLY ADVERTISED BRANDS SALE, WE OFFER YOU THE OPPORTUNITY TO COMPARE THE QUALITY OF PRODUCT, AT REASONABLE SAVINGS ON BOTH DURING THIS PERIOD.
GRAND UNION'S POLICY OF QUALITY & SATISFACTION GUARANTEE STANDS BEHIND EVERYTHING GRAND UNION SELLS...SO IF YOU ARE NOT COMPLETELY SATISFIED WITH ANY OF THE BRANDS WE SELL, YOUR MONEY WILL BE CHECKFULLY REFUNDED!

SAFE SOFT
COTTON SWABS
GRAND UNION Q-TIPS
PKG. OF 180 **39¢** PKG. OF 170 **55¢**
PLUS TRIPLE-S BLUE STAMPS

CHICKEN, BEEF OR TURKEY
FROZEN POT PIES
GRAND UNION SWANSON
8 OZ. PKGS. **4 \$1 3 \$1**
PLUS TRIPLE-S BLUE STAMPS

CRISPY CRACKERS
SALTINES
GRAND UNION NABISCO
1 LB. PKG. **29¢** 1 LB. PKG. **39¢**
PLUS TRIPLE-S BLUE STAMPS

U.S.D.A. CHOICE BEEF
CHUCK ROAST
FIRST CUTS
lb. **79¢** PLUS BLUE STAMPS

LIQUID
BLEACH
GRAND UNION CLOROX
1 GAL. BOT. **36¢** 1 GAL. BOT. **45¢**
PLUS TRIPLE-S BLUE STAMPS

SELECTED
TOMATOES
GRAND UNION DEL MONTE
16 OZ. CANS **4 \$1 3 \$1**
PLUS TRIPLE-S BLUE STAMPS

VEGETABLE
SHORTENING
GRAND UNION CRISCO
3 LB. CAN **99¢** 3 LB. CAN **1.19**
PLUS TRIPLE-S BLUE STAMPS

U.S.D.A. CHOICE BONELESS BEEF
SHOULDER ROAST
lb. **1.49** PLUS BLUE STAMPS
TOP QUALITY FRESH ROASTING
CHICKENS
5 1/2 LB. AVG. WGT. **59¢** PLUS BLUE STAMPS

Introducing a great new Grand Union product... and its nutrition labeled.
for goodness sake... read a Grand Union Label!
Textured Vegetable Protein 2 1/2 OZ. PKG. **25¢**

U.S.D.A. CHOICE BONELESS BEEF
SHOULDER STEAK
lb. **1.79** PLUS BLUE STAMPS

• DELICATESSEN •

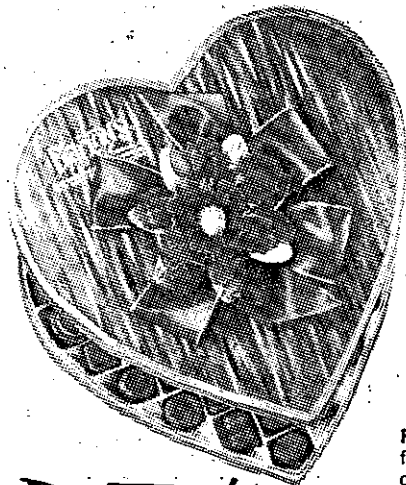
PIPING HOT
BAR-B-QUE CHICKENS LB. **99¢**
NEW ENGLAND BRAND
SAUSAGE 1/2 LB. **89¢**
SALAMI STYLE CHEESE
PROVOLONE 1/2 LB. **79¢**
FRESH, CREAMY
MACARONI SALAD LB. **45¢**
LA TRIESTA ALL PORK
GENOA SALAMI 1/2 LB. **75¢**
OUR OWN RECIPE
OLIVE SALAD 1/2 LB. **89¢**

• MEAT VALUES •

SLICED SELECTED
BEEF LIVER LB. **89¢**
KRAUSS
POLISH KIELBASI LB. **1.49**
OSCAR MAYER WEINERS OR ALL BEEF
SKINLESS FRANKS LB. **1.39**
GRAND UNION BRAND
SLICED BALONEY LB. **1.29**
SWIFT'S PREMIUM BROWN & SERVE
SAUSAGE LINKS 8 OZ. PKG. **95¢**
TOBIN'S FIRST PRIZE—ALL MEAT
SKINLESS FRANKS LB. **1.39**

100% FLORIDA
FROZEN ORANGE JUICE
GRAND UNION MINUTE MAID
16 OZ. CAN **49¢** PLUS BLUE STAMPS 16 OZ. CAN **69¢** PLUS BLUE STAMPS

SMOOTH OR CRUNCHY
PEANUT BUTTER
GRAND UNION SKIPPY
18 OZ. JAR **49¢** PLUS BLUE STAMPS 18 OZ. JAR **69¢** PLUS BLUE STAMPS



BARTON'S
bonbonniere
continental chocolates
NEW YORK • LUGANO, SWITZERLAND



all the 
LOVE
 a **HEART**
can hold

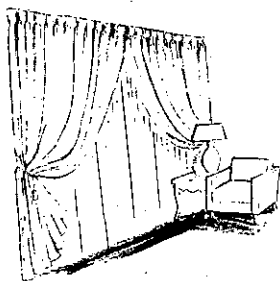
Forever Yours—Nuts, cordials, fruits and cremes are the heart of these chocolate miniatures. In a glistening Heart crowned with bouffant bow and elegant flower. Delight your love with this or any of the other attractive BARTON'S Valentine Hearts. Come see them all.

NOW AVAILABLE AT:

Elsmere Pharmacy, Inc.

99 Delaware Ave., Elsmere, Next to Albany Public Market
PHONE 439-5491

LAST WEEK OF SALE



SEMI-ANNUAL CUSTOM-MADE DRAPERY SALE

NOW YOU CAN HAVE YOUR NEW SPRING DRAPERIES — All the newest fabrics — all the same care and quality that go into everything we do — and you can **20% OFF** the regular price — fabrics from famous makers as Reliable — Decorator Industries — Wynmor — Waverly — Schumacher —

ALL AT 20% OFF

For a limited time only.

Call for Shop-at-Home Service or come in to

DELMAR DECORATORS

DELAWARE PLAZA, DELMAR • 439-4130

Mon.-Fri. 10:00 A.M.-9 P.M. • Saturday 10 A.M.-5:30 P.M.

COMMUTER TRAFFIC HABITS

Third Report

The third car-occupancy survey of commuter traffic from the Town of Bethlehem into Albany was made on Jan. 22 by the Natural Environmental Class at BCHS. The same four check points were used but the starting time was delayed 1/2 hour (to 7:30 A.M.) because of the darkness due to Daylight Saving Time.

This latest survey shows that 5150 commuters were transported in 4021 cars. Analysis of the data shows that the "car pooling" trend that was possibly indicated by the Dec. 19 survey was not

actually a trend at all. In fact, the January survey shows a drop from 1.33 (Dec.) to 1.28 occupants per car; the one-occupant cars **increased** by 3% and two-occupant cars **decreased** by the same percentage. There was no percentage change in the three-or-more-occupant cars.

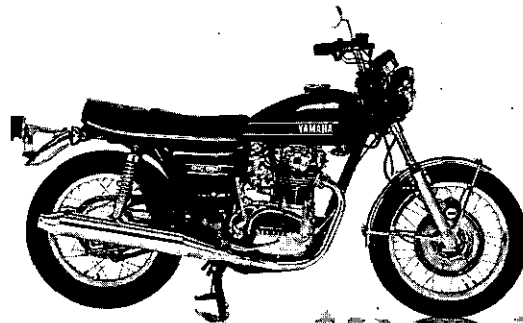
The changes seem to have been due to a shift in large car occupancy with two locations accounting for most of this change: Route 9-W and Delaware Ave. The ratio of large cars to compacts remained about the same, at 3.5 to 1.

Although there is still some improvement in the car-occupancy picture between Nov. (1st survey) and Jan., espe-

Scouting today's a lot more than you think.

Be a Sustaining Member.

BUY NOW '74 YAMAHAS at '73 PRICES



DAVE FLACK Sales & Service
Route 9W, Ravena • 756-2900

cially in the Slingerlands By-Pass and Delmar By-Pass traffic, the increased questioning of the seriousness of the energy crisis seems to be slowing the response of the public to the problem.

BCHS students participating in the Jan. survey were: Mike Roark, Rick Kreidler, Cindy Keers, Carl Bonenati, Steve Riedel, Mark Osborne, Wayne LaChappelle, Jeff Young, Lynda Japlin, Julie Carey, Bill Eberle, Jim Mooney and Chris Barker.

Advisory Committee At Work

Eight persons are now serving as a Parent Advisory Committee on Career Education

for the Hamagrael Elementary School. The Committee held its first meeting last month, and will meet again next Wednesday night.

Anyone with questions or suggestions relating to the Career Education project may call one of these Committee members: Mrs. Frances Cocozza, Gerard DeSimone, Mrs. Pat Donnelly, Robert Kistler, Mrs. Barbara Meinert, Donald Roberts, Mrs. Asieh Shaye-gani, and Mrs. Dortha Spalek.

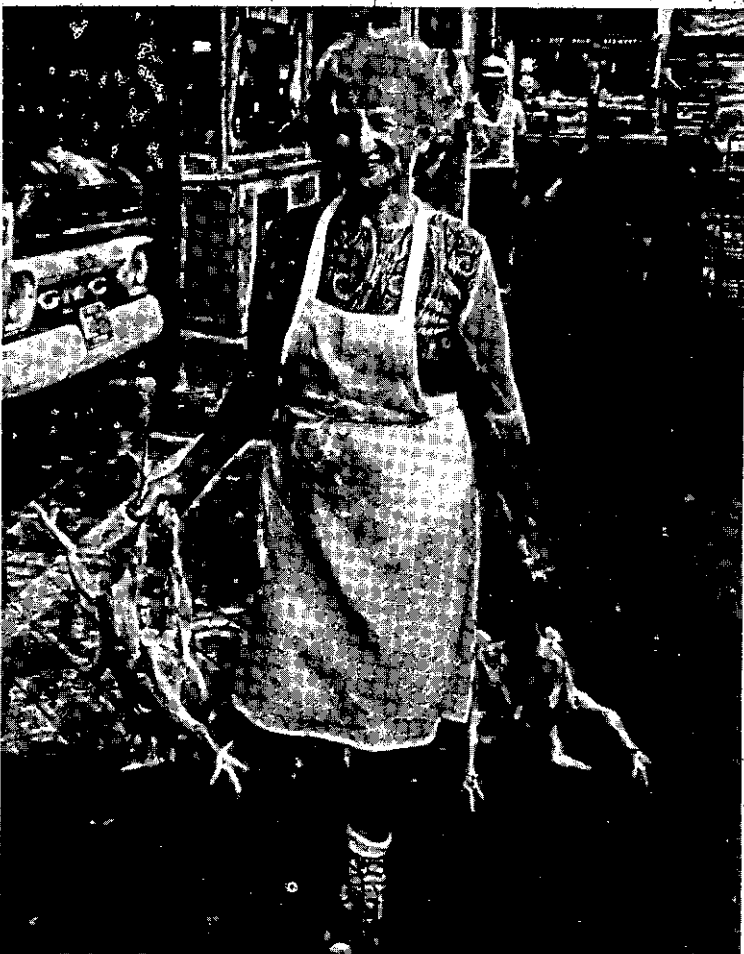
Sale for Dimes

A White Elephant Sale held recently by students in Mrs. Sheryl Ricciardelli's third grade

COVER STORY

AL YARINSKY EXHIBIT

THIS WEEK'S COVER is a "proof sheet" of photos by Allen Yarinsky of street scenes taken last summer in Toronto, Montreal and Quebec. The contact prints showing the cropping marks are included among the more than 35 pictures Mr. Yarinsky has on display through February at the Bethlehem Central High School.



GRAND OPENING

**STYLES BY SARSFIELD
BETTY SEWELL, ASSOCIATE**

80 Delaware Ave., Elsmere, N.Y.
(Across from Albany Public Market)

Specializing in hair cutting, shaping, and blow combing.

Grand Opening Special

during February:

Regular \$4.50 Shampoo & Set
\$3.00 WITH THIS AD

Telephone 439-7168 anytime

TREESCAPE

ARBORICULTURAL SERVICES

HAROLD C. MacINTOSH, Prop.

The People Who Care About Your Trees & You

- Pruning • Tree Removal • Bracing
- Feeding • Tree Surgery • Planting
- Cabling • Vista Cutting

- Wood Lot Improvement
- Stump Removal

24 Hr. Emergency Service

439-7147

Free Estimates

FIREWOOD

Mail Address: Box 14, Slingerlands, N.Y. (Zip 12159)

SEMI-ANNUAL SALE

PRICES HAVE NEVER BEEN LOWER

GIRLS' DRESSES (3 days only)

Kate Greenaway & Love

1/2 Price

GIRLS' PANT SUITS

1/2 Price

GIRLS' SLACKS
(Special Group)

\$2.99

BOYS' CORDUROY SLACKS
(Special Group)

\$2.00

BOB ROY SHIRTS
(Knit & Broadcloth)

20% Off

BOYS' SWEATERS

\$2.99

BUSTER BROWN POLOS
FOR BOYS & GIRLS

20% Off

LADIES' SKIRTS
Value to \$12.00

\$2.99

LADIES' FLEECE ROBES
S-M-L-XL-XXL

\$4.00

LADIES' HOUSEDRESSES

2 for \$7.00 (3.98 ea.)

BRUSHED DENIM
MEN'S JEANS

\$3.00

MEN'S SWEATERS (Value to \$14.98)
CARDIGAN OR PULLOVER

\$5.99

MEN'S SHIRTS
Regular \$4.98 each

2 for \$5.00

Many more outstanding values in all Departments

DELMAR DEPARTMENT STORE



FOUR CORNERS



HUGO'S

for
Discerning
Diners

ANSWERING SERVICE

Business & Professional

Telephone Exchange

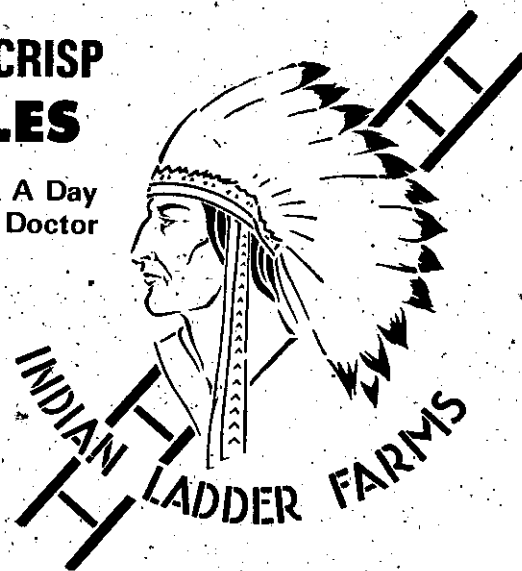
24 hours a day

Call

439-4981

FRESH CRISP APPLES

"An Apple A Day
Keeps the Doctor
Away"



EVERY WEEKEND WE
ARE STILL BAKING!

2 mi. W. of Voorheesville
on Rt. 156
9-5 Weekday • 10-5 Sunday

APPLE PIES • FRESH BREAD •
HOT CIDER DOUGHNUTS

C. B. CLARKE, INC. FOR INSURANCE CALL



BURT ANTHONY

Have you raised your homeowner policy to keep
up with the spiraling value of your home? Why
not call us for a competitive quote?
CALL 439-9958



339 Delaware Avenue, Delmar

We're Unbeatable... at making your money grow.

For 105 years the professionals at Catskill Savings Bank have
been helping people like you make the most of their money.

Like our depositors, we've grown. We're the oldest and
largest savings bank in the area. With two offices to serve you.
Drive-in teller windows for your convenience... and a large
staff of professionals with a sincere desire to make your money
work harder for you.

So stop in today. At the bank you can count on



for all your money's worth.

Catskill Savings Bank

Member FDIC

- Main Street, Catskill.
- Route 9W, Ravena

We're first rate...in your interest, too.

7.50% now yields **7.90%** a year on new 4 to 7 year
Certificates of Deposit.
6.75% now yields **7.08%** a year on new 2½ to 4 year
Certificates of Deposit.
6.50% now yields **6.81%** a year on new 1 to 2½ year
Certificates of Deposit.

Interest on all Certificates of Deposit is guaranteed, compounded daily and paid quarterly. Minimum deposit \$1,000. To take advantage of the higher annual effective yields, interest must be allowed to accumulate and remain on deposit for the full year. Premature withdrawals are subject to substantial penalties prescribed by the regulatory agency.

5.25% now yields **5.47%** a year on Regular Savings

Accounts and Day of Deposit to Day of Withdrawal Savings Accounts.

Interest is compounded daily and paid quarterly. To earn the high annual effective yield, interest must be allowed to accumulate and remain on deposit for a full year. Regular Savings deposits made by the tenth of each month earn from the first.



class at the Clarksville Elementary School raised a total of \$72.17 for the March of Dimes.

Besides raising money for a worthy cause, the event caused much happy excitement as Clarksville students "shopped" for baked goods, games, toys, books, clothes and knick-knacks — all donated by Clarksville families.

Three Win Awards

During December Jacqueline Ryan, a junior in shorthand II and transcription at Bethlehem Central High School, earned a certificate from the Gregg Awards Program for taking three letters at 60 words per minute and transcribing two mailable letters in 20 minutes.

In January Jill Turner, a junior, and Anne Marie Sullivan, a senior, earned certificates for their shorthand speed by taking five minutes of dictation at 80 words per minute and transcribing their notes with 95 percent accuracy.



Sink Or Swim

All boys and girls in the 2nd through 5th grades interested in participating in the American Red Cross Learn-To-Swim program. The program will begin Tuesday, March 5, 6:30-9:00 P.M. at Bethlehem Middle School pool. Registration for the program will be on the first evening of instruction.

Yoga:

relaxation, meditation, self-awareness

A most unique opportunity! Residents who participate in this program will learn how to relax through developing

breathing techniques coordinated with their physical and mental movements. And, become aware of the needs and care in relieving unwanted tensions and in releasing latent energy. Participants will also take part in discussions based on the Bhagavadgita and related philosophies, ways that we, as human beings, think, speak, act, and respond. Explore the ideas of man as he relates to himself, with society and with the universe.

Pre-registration is required. Anyone wishing to register for this program may contact Mrs. Nancy Handwerger, 439-5027. The program will begin Wednesday, March 6, 7:30-9:30 P.M.

Heart Disease Intervention Program

This program began the evening of Monday, February 4, 5:30 P.M., at the Middle School Boy's Gym. If you plan to participate and have not registered please contact the Parks and Recreation Department office, 439-4131.

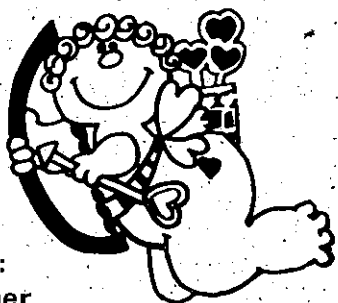
LIBRARY NOTES

For Adults Only!

Valentine's Day is quickly approaching. Have you gotten Valentine cards for everyone you love? What about those people you appreciate? — people you would like to have know you appreciate, but to whom you wouldn't ordinarily send a Valentine? The Bethlehem Public Library would like to help you show those people you care, or that you are grateful for whatever they have done for you, or whatever. The library will provide the raw materials, you provide the ingenuity. Make a card for someone you appreciate — the checkout person at the grocery store, the school crossing guard, your dentist, a busdriver, anyone.

This is a project for adults only. Youngsters can make

VALENTINE'S DAY THURSDAY, FEBRUARY 14



Candy By:
Fanny Farmer
and
Candy Kraft

Handmade Candles and Gifts

Free gift
Wrapping

Largest Selection
of Valentine Cards
in the Area

**C. M. GROVER
Stationers**

DELAWARE PLAZA, DELMAR

HELP

THE HOLIDAY RUSH IS OVER AND WE NEED WORK!

YOUR LABOR PRICES ARE ONLY

CHAIR

\$14⁵⁰

SOFA

\$29⁵⁰

YOU WILL RECEIVE THE NEW
"BARGAIN LOVERS GUIDE"
WHEN OUR DECORATOR VISITS YOUR
HOME FOR A FREE ESTIMATE

CALL
NOW **765-2361**

ROTHBARD'S

REUPHOLSTERY BY EXPERTS SINCE 1925

their Valentines in school or at home. Adults can make their Valentines at the Bethlehem Public Library!

Western Roundup

The second film in the Bethlehem Public Library Western Round-Up will be shown at 2 P.M. in the Large Community Room on Sunday, February 10. The film will be "The Legend of the Lone Ranger."

This film chronicles how the Lone Ranger story began with a Texas Ranger group ambushed by the Butch Cavendish gang. One person survives, to be nursed back to health by an Indian, Tonto. The discovery of the sterling steed, Silver, and the origin of the famous silver bullets are depicted in this history.

Don't miss this movie, because it will provide background for the movie shown on February 17, another Lone Ranger adventure.

Happy Birthday Abe and George!

The Bethlehem Public Library will be closed Tuesday, February 12th in observance of Lincoln's Birthday and on Monday, February 18th in observance of Washington's Birthday. If you want to return your books, please deposit them in the book drop which is on the wall next to the bookmobile garage door. Thank you.

vide for only one-third of Council expenses. The rest comes from public support.

The Governor Clinton Council has a membership of over 10,000 Scouts and 3,000 adult leaders. Last fall over 1,000 new Scouts joined and 3,000 more are expected to join within the next two years.

The public campaign headed by Schutt will include over 300 volunteer Scout leaders in all three counties.

Named Town Attorney

Wayne M. Davis of Slingerlands, was appointed Town Attorney for the Town of Rensselaerville at its January organizational meeting, according to J. Robert Lansing, Town Supervisor.

Mr. Davis maintains offices for the private practice of law in Albany. A graduate of Union College and Albany Law School, he is also a faculty member at Russell Sage College, serves on the Board of the Association for Retarded Children, Albany County, and is president of Stanley and The Major, Ltd., a real estate firm.

Tickets Are on Sale

The Slingerlands Community Players have announced the sale of general admission tickets to their forthcoming production of Shakespeare's "The Tempest."

Dick Swire, business man-



TALL TIMBER

COUNTRY CLUB


HILTON RD., SLINGERLANDS, N.Y.

Restaurant & Banquet Facilities

OPEN TO THE PUBLIC

X—Country Ski Club Membership

For Information, Reservations: Mrs. Robilotto



JACKPOT SINGLES

at
SPORTHAVEN LANES
417 Kenwood Avenue
Delmar, N.Y.

439-1110 439-1110

WEDNESDAY NIGHTS

9:30 P.M. • Finals at 11:30 P.M.

MEN — WOMEN
195 average
& under
75% hdcp. of 200

\$4.00 Entry
On The Spot
Payoff

Strike
Bonus \$

Here & There

Heads Campaign

William C. Schutt, President of the Union National Bank, is Chairman of the 1974 supplemental income campaign for the Governor Clinton Boy Scout Council. The Council needs \$70,000 more in 1974 to pay for expanded services and programs.



William
C. Schutt

Scout officials point out that the Governor Clinton Council is responsible for Boy Scout progress in Albany, Rensselaer and Columbia counties and the United Way campaigns in these areas pro-



Coat Length - Pant Length

The easy care coat

WATER REPELLENT WIND RESISTENT
MOTH & MILDWEAVE PROOF CONTOUR TAILORING
EASY CARE

Shell & Lining - 100% Nylon Filler - 100% Polyester

\$14.95

Colors: Red-Blue-Green-Purple

We still have MEN'S SKI JACKETS

MILL END SHOP

2 GREEN ST., RENSSELAER
(Factory Outlet Prices)

Mon-Fri 7a.m.-5p.m.
Sat. 10 a.m.-2 p.m.

465-2371

**J. WALLACE CAMPBELL
PHOTOGRAPHS**
Wedding Photographs

Portrait Commercial

31 Hawthorne Ave., Delmar, N.Y.
Telephone 439-1381

You'll find
THOUSANDS of

WONDERFUL WAYS TO SAY

**"Be my
Valentine"**

at ...

CARD FAIR

52 North Pearl St., Albany
41 State St., Albany

Pharmacy Topics



by
Tom
Longtin

In some European countries, yogurt is prescribed along with antibiotics, to replace the beneficial intestinal bacteria killed off by the drug.

French researchers say they have perfected a flu vaccine that will protect against virtually all types of influenza expected to crop up in the next five years.

If you're still getting the flu, make yourself more comfortable with the analgesics and decongestants at

**New Scotland
Pharmacy, Inc.**

Phone 439-6551
Stonewell Shopping Center
Slingerlands, N.Y. 12159



FROM LEFT TO RIGHT, Steve King, assistant director, discusses staging details with cast members Rachel Follett, Vicki Adler and Chris Dammer during rehearsal for **The Tempest**. The Slingerlands Community Players present the Shakespeare vehicle on February 28 and March 1 and 2 at BCHS. The cast also includes Paul Richer, Sue Gregory, Betsy Hatt, Kirk Jackson, Chip Alfred, Steve King, Tom Rowland, Dick McGrath, Sue Kramer, Matt Schultz, Sydney Turner, Oblo, Sue Reich, and Chris Matuszek.

ager, reports that single tickets at \$3.50 each are on sale in Delmar at L.J. Mullen Pharmacy and C.M. Grover — Stationers and at The Clothes Horse at the Toll Gate in Slingerlands. Students tickets, specially priced at \$2.50 may also be purchased from these same merchants. Mail orders accompanied by a check and self-addressed, stamped envelope should be sent to SCP, c/o Swire, 95 Meadowland St., Delmar, N.Y. 12054. All mail orders will be filled immediately upon receipt. Groups and organizations may purchase general admission tickets at \$3.00 each by ordering twenty or more tickets at one time.

Performances of "**The Tempest**" are scheduled for February 28 and March 1 and 2 at Bethlehem Central Senior High School.

Bankathon Announced

More than 150 runners are expected to start in The Bankathon, a 25-kilometer Schenectady-to-Albany Adirondack AAU Open Championship Race to be sponsored by the National Commercial Bank and Trust Company, Sunday, March 31.

The event, run over a 15 miles plus course, is being coordinated by the Hudson-Mohawk Road Runners Club, the West Albany Striders, the Albany YMCA, Capital Track Club, Parkside Panthers and the Electric City Girls Athletic Club.

The run will begin at Noon at the Citizens Office of The Bank, 436 State Street, Schenectady. The route will be east on State Street and Central Avenue, through Niskayuna and Colonie, to Albany; north on Northern Boulevard; east on Sheridan Avenue and Columbia Street; south on Broadway, once around the Plaza, then to the finish line at The Bank's new headquarters building at 60 State Street, Albany.

Adirondack AAU Open Championship medals will be awarded to the first three finishers and the first ten to cross the line will receive a special trophy and other awards permitted by AAU rules.

Trophies will also be presented to the first three high school runners, the first three women and the first three in each of 30-39, 40-49, 50-59 and 60, plus age groups.

Team trophies will be awarded to a men's five-member team and a women's three-member group. There will also be trophies for the first 150 finishers and T-shirts to the first 150 entrants.

Kiwanis Meets Tonight

The New Scotland Kiwanis Club will conduct their weekly meeting starting at 7 P.M. (tonight) Thursday, February 7, at the New Scotland Presbyterian Church.

Harold "Coach" Mead, teacher at Voorheesville High

School, will present a program on Driver Education and be assisted by three of his students.

All men of the community who may be interested in the New Scotland Kiwanis Club and would like to become familiar with the club's community service projects are welcome at the weekly meetings.

Contact the Chairman of Membership Development, Michael Bartholomew 765-2346.

Attends Soflens Seminar

Miss Suzann Condorousis, of Menands, recently attended a seminar on the newly developed soft contact lens manufactured by Bausch & Lomb. Miss Condorousis, who is the optometric assistant of Dr. Robert M. Gold, Voorheesville Optometrist has been working with the "soflens" for some time.

In addition to her interest in contact lenses, Miss Condorousis has attended courses in subnormal vision offered by the New York Association for the Blind.

1949 Class Reunion

Members of the BCHS Class of '49 are planning their 25th Reunion for June 22, 1974.



A BREAKER OF RECORDS — Rolf Olsen, son of Mr. and Mrs. Rolf Olsen of Delmar, is one member of the BCHS swim team who has not only broken local school records but also in most of the other area high school pools where he has competed. During the summer months, he is a member of the Delmar Dolphins. He works part time at the Donnelly Shoe Store at Delaware Plaza.

Anyone knowing the addresses of class members is asked to contact Janet Quintana, 439-4028.

The next meeting of the committee on arrangements will be held on Wed., Feb. 27, 8 P.M., in the Community Room of the Delmar branch of The Bank.

IMPORTANT MEETING

A Cub and Scout Roundtable Meeting for Den Leaders, Scout Masters and Senior Patrol Leaders will be held at BCHS, Rooms 17 and 19A, 8 P.M., Tuesday, Feb. 12. Show tickets will be distributed.

Safety Tape Available

With the advent of Daylight Saving Time at 2:00 A.M. this past January 6, clocks were moved ahead one hour so that now children in the Town of Bethlehem are walking to school or waiting at their bus stops in the dark. Supervisor Bertram E. Kohinke has expressed concern about the situation and agrees with par-

ents, school officials and the Town Police Department that it presents a serious safety hazard.

In a step taken to alleviate the situation, the school officials changed the schedule so that classes begin one-half hour later. Working further with the school officials on the problem, the Bethlehem Police Youth Bureau under the direction of Sgt. Leo E. Dorsey is making available, free of charge, reflector tape that would aid toward the safety of school children walking to school or waiting for their busses and, in fact, anyone having occasion to walk during the dark morning hours or in the evening. This orange reflector tape glows, reacting particularly to motorists' headlights, and can be worn on the arms of pedestrians and, in the case of cyclists, can also be attached to fenders or other parts of the bicycles.

The tape is being supplied through the courtesy of the General Electric Plant of Selkirk and as much as is needed can be picked up by children, their parents, or any Town

Resident interested in taking advantage of this safety precaution, at the Bethlehem Police Headquarters, 118 Adams Street, Delmar.

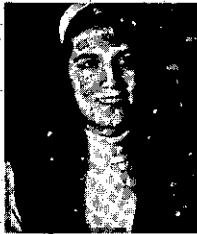
ELECTED TO BANK BOARD

At the January meeting of the Board of Trustees of City and County Savings Bank, these men



SGT. LEO DORSEY, Bethlehem Police Department Youth Bureau, affixes reflective tape to the outer clothing of St. Thomas students in an effort to add to the children's safety during the early morning and evening hours. Left to right: Sister Marcia Faima, Kimberly Jeram, Beth Jeram, Peggy Jeram, Chiedu Onukogu, Sgt. Dorsey, Debbie Jeram and Kem Onukogu.

Jim Fuller Photo



HERE COMES JONI!

with a brand new column for
Spotlight readers! Joni's column will include social notes (but will NOT be a Society Column); it will be personal (but it will not be the average "Personals Column"); it'll be a column that will fill the big void in past Spotlight coverage.

If you're having...

- a dinner party
- cocktail party
- weekend guests
- bridge party
- open house
- a brand new baby

just jot the facts down,
(type them, preferably)
and send them to:

JONI
The Spotlight
154 Delaware Avenue
Delmar, N.Y. 12054

and Joni will use as many items as there is room for.

NOTICE to PARENTS

Could your child use some help with schoolwork? Have you ever wondered about his I.Q.? Are his reading and spelling . . . his phonetics, handwriting, and math, as good as they should be?

Now, through the Learning Center's diagnostic testing service, parents can find the answer to these and other questions. Quickly, inexpensively, and without obligation, parents can receive a complete and confidential report on children from 5 to 18 years of age. If you've ever wondered about these questions, or if you think your youngster could use some individual help, call the Learning Center at 10 Colvin Avenue, 459-8500.

(clip out and save)

Monthly Gourmet Cooking Class And Wine Tasting Class

\$4.50

includes tour and luncheon. The class will be taught by the chefs of the Golden Fox and Stone Ends. Tell your friends and plan to spend a delightful afternoon.

FEBRUARY 14 - 12:30-2:30
call for reservations



Steak
House
Telephone
459-3500

1400 Central Avenue

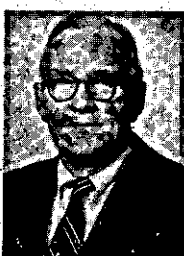
were elected to Board membership, according to bank president Frederick W. Stolz:



Richard H. Kukuk
of Delmar



Joseph H. Rudd
of Glenmont



William C. Walsh
of Slingerlands

HOME SAVINGS BANK PROMOTIONS

Each of these key executives at Albany's Home Savings Bank received promotions:

Annette C. Hart, promoted to Home Savings Bank Assistant Secretary.



Stephen W. Chesley,
Assistant
Vice-President



Paul J. Clarke,
Assistant
Vice-President



Vincent J. Ganence,
Assistant
Vice President



George R. Gibson,
Assistant
Vice-President



D. Edward Houle,
Assistant
Vice-President

A HISTORY OF THE DELMAR PROGRESS CLUB

By Alice Porter

Close your eyes for a minute and picture what Delmar looked like 67 years ago. A little rural hamlet — no sidewalks — no street lights, two churches and no organizations.

Elva Hinman, a well known woman in the community, had been to Cobleskill for a visit and was impressed with the Woman's Club there. Upon her return home, she called together interested women and there were eleven who responded. Some husbands there were who felt woman's place was in the home and would not let their wives go, saying, "It boded no good."

Mrs. Carolyn Rouse was elected President in 1901. The object of the Club, the Minutes state, was "for the mental, moral and social development of the members and the betterment of the com-

munity. Just how we have helped the morals would require some research but as for the betterment of the community, we have much evidence.

Picture these women going to meetings at night with lanterns in their hands; the Club started out as a porch party but changed to night meetings so the men could mind the children. The women were looking, figuratively speaking, for "light, more light," for only thru knowledge and education and cooperative action could women improve themselves or their community.

Early timidity gave way to action and the Club joined the State Federation of Women's Clubs in 1904 and the General Federation in 1916.

The first visitors in 15 years to inspect the two-room schoolhouse were a committee from the Progress Club. They found repairs badly needed and saw to it that improvements were made. The women were shocked at the conditions they found and set out to create interest in building a new school. (This is now the Masonic Temple.)

On February 6, 1909, the

Keep them working for you.



With over 4 years prior service, you can now pick up \$69 (less tax) each weekend meeting. Plus retirement benefits.

The Army Reserve.
It pays to go to meetings.

Club called a parent-teachers meeting and funds were raised to purchase a piano. The Principal agreed to have vocal instructions for a half-hour Fridays. A sewing club for mothers was conducted with twelve enrolled.

Picture again this community with no transportation to Albany except by train. When the six o'clock train came in, it looked like a factory let out. According to the Secretary's Minutes of the Club, I quote: "A committee was formed to wait on the officials of the D. & H. Railroad and to request better train service and a clean waiting room." The request was granted. In addition, "No Smoking" signs were posted, smoke being offensive to the ladies.

The Progress Club in 1912 raised money for books and set up the first free library in a little room at the head of the stairs in the school. They formed a library association and in 1916 with a Club membership of 25, set out to build a library. From the Adams estate the Club was given a piece of land on which to build. Money was raised by donations, lantern slide lectures, plays and food sales. When approached, one man said it was a "superfluity" and would not donate but his wife gave \$1; this is the library you enjoy today. For fifteen years it was run with volunteer service and one year a total of 4246 books were loaned. As the town grew, so were the needs of the library until it became impossible to handle with volunteers. In 1931 it was given to the Central School District.

This "superfluity" in 1964 distributed 204,854 books. Were it not for the Progress Club, one may wonder if we would have a library today. We have never ceased our interest in the library. In 1954 a community auction sponsored by the Club raised money to furnish the Community Room.

In 1928 the Club organized a choral society with a paid

director. For several years Gilbert and Sullivan operas were produced.

When the membership in the Club reached 200, it became impossible to meet in homes and arrangements were made to meet in the churches.

With the increase in membership, interests became varied and the Club departmentalized. Membership at this time had been increased to 300. We then made arrangements to meet in the Junior High School, which at that time was our High School.

In 1931 the Civic Betterment Committee was organized with Helen Piper as Chairman. Their first project was to get mail delivery. A petition to the Town Board revealed the fact that first the streets had to be named (one street had four different names for its

various sections). Naming the streets seemed quite simple until it was learned that the streets for the entire Town of Bethlehem had to be named before the Town would erect street signs. This the Committee did and the houses were numbered, making the Town eligible for mail delivery.

Among other accomplishments of this committee was an ordinance to control Fourth of July fireworks.

A second ordinance was brought about to prohibit the use of firearms in the community. There had been an epidemic of bullets shattering windows in several homes.

The Civic Betterment Committee petitioned the Town to provide garbage collection which did away with digging holes in back yards to bury the refuse.



HOME SAVINGS BANK ANNOUNCES CHANGES — John E. Vrooman (right) has announced his retirement as bank president but will assume the duties of the Chairman of the Board of Trustees. Marshall S. Hancock (center) is the new President and Executive Officer. Jacob H. Herzog (left) has been named to the post of Home Savings' Secretary.

GIVE YOUR VALENTINE



A book
of
Car Wash
Tickets

5 Tickets for \$5.00

**BETHELEHEM
CAR WASH**

Route 9W just South of
Delmar By-Pass

**there's
a better way
to get that
warm feeling**



**...stop
winter dryness
in your home
with an**

**Aprilaire®
HUMIDIFIER**

A chilly feeling, even at high thermostat settings is one sign of two-low humidity. There are others—loosened joints in furniture... cracked walls... excessive wear of fabrics... uncomfortable, dried-up feeling. The answer? Proper humidity. How to get it? An Aprilaire Humidifier. Humidistat-controlled. High capacity. Minimum maintenance. Call us for more information.



439-7605

318 Delaware Ave
Delmar New York 12054

At one time 150 trees were planted in back of the library and an elm tree was set each side of the library honoring the founder, Mrs. Hinman, and a much beloved President, Mrs. Humphrey.

In 1935 the Club organized a community flower show with Alice Porter as Chairman. Over 1000 visitors registered for the first show. This was an annual affair which continued for several years.

The Garden Group has done outstanding work in decorating the library and the Albany Rescue Mission for Christmas as well as arranging flowers for the Veterans' Hospital. This group plays an active part in the Tulip Show at the Albany Institute of History and Art, and again holds an annual flower show.

Almost since the beginning the Club has provided the Home for Incurables with pumpkin pies and jellies for Thanksgiving.

The Association for the Blind finds the Club yearly topping the list in the sale of articles. For a time, a vacant store at the Four Corners was used for this sale, which was

heated with a little coal stove. Up to this time (1965) the highest amount raised was \$1700 (as of 1967, \$2700).

An annual scholarship of \$50 was given to a worthy High School Senior with recommendation that an increase in the amount be made when possible (now in 1967 \$200 yearly). Contributions are made annually to the Ada Franklin Third District Scholarship Fund, and donations to many other civic and philanthropic organizations.

The State Scholarship Fund has been given \$75 which carried with it the privilege of placing three names on the Honor Roll. Members so honored are Mrs. Edwin Piper, Mrs. George Porter and Mrs. Burton Chase.

We have now adopted the

policy of donating books to the library in memory of deceased members.

Several Progress Club members have held office in the State Federation; your author served ten years as State Historian and at the request of the General Federation, wrote a summary of 57 years of New York State Federation history, which was published.

The Delmar Progress Club is looked upon as a force in the community. It is now a practice for a representative of the Civic Betterment Committee to attend Town Board meetings. The Club is credited with being the instigator of the Town Planning Board.

When the Town Fathers wanted a tour of the Town of Bethlehem brochure planned, they came to the Progress

Club in 1965. A drive-yourself tour registered 800 participants.

In 1966 an extremely successful "garden therapy" program was instituted in conjunction with, and at the request of, the Red Cross at the Veterans' Administration Hos-



COLIN W. GETZ of Delmar, New York Telephone's Vice President for Upstate New York, has been named chairman of the Sustaining Membership Drive Dinner of the Governor Clinton Council, Boy Scouts of America. The dinner will be held Friday, March 22, at the Hyatt House.



WILLIAM KINSLEY, right; Catherine Gifford and Robert M. Coughlin of Delmar AARP, review applications for Supplemental Security Income with Jeanette Rafter, volunteer chairman of Project SSI Alert for the Albany Area Chapter, Red Cross. They are helping the local Red Cross Chapter identify the elderly, blind, and disabled who may be eligible for supplemental income under a new government program.

N.Y.S. OFFICIAL
Inspection Center

L & H

Brake & Front End Service
115 Adams Street, Delmar
HE 9-3083

Alignment
Wheel Balance
Mufflers & Tail Pipes
Brakes
Front End
Springs

Golf Lessons By Appointment

- Get your golf swing in shape
- 2 Driving Nets
- Lessons from

9 A.M.-5 P.M. Mon. & Sat.
9 A.M.-10 P.M. Tues.-Fri.

INSTRUCTOR
BOB McQUADE



Bob's Golf School

32 Central Ave.
Albany, N.Y.
Phone 463-3652

222 Delaware Ave., Delmar, N.Y.
• 439-7253 •

Open 7 days 10:00 to 9:00 P.M.
Certified Kosher by OK Labs

SALE

Carnel

PINTS -- (Reg. 75¢ each) -- **4 for \$2.00**

QUARTS --- (Reg. \$1.40) --- **\$1.00**

HALF-GALLONS -- (Reg. \$2.25) -- **\$1.75**



ICE CREAM CAKES

7" — \$3.25	SHEET CAKES
8" — 4.25	11" x 15" — \$7.25
9" — 5.25	12" x 17" — 8.25
10" — 6.25	

pital in Albany. This is proving to be very worthwhile in rehabilitating seriously handicapped patients.

As we review the past 67 years, we pay tribute to the founders of the Delmar Progress Club. We can look back with pride to its many accomplishments. We must not become just a social club,

for to justify our existence we must do for others.

Matthew Arnold once said, "If ever the world sees a time when women shall come together purely and simply for the benefit and good of mankind, it will be a power such as the world has never known."

ALARMING FACTS ABOUT BURGLARIES

In the time it takes to read this article, about 10 burglaries -- several in the suburbs -- will take place in the United States. And it is well to note that hundreds of thousands of American homeowners are victimized by burglars to the tune of \$200 million a year.

To help combat this menace, the General Electric Company has several good suggestions for safeguarding your home against burglaries.

1. Before going on an extended vacation, arrange for your lawn to be cut and ask neighbors to pick up all mail and circulars so your house has a "lived in" look. Stop delivery of milk and newspapers since they are another sure sign, if allowed to accumulate, that no one is home.

2. Don't notify the society editor of your local newspaper that you are planning to leave on a trip. Tell the editor about your vacation after you've returned; it's still news and safer for you.

3. Burglar alarm systems are useful and vary in cost according to the size of your home. Estimates run from about \$100 to approximately \$3,000.

4. If a house is well-lit, burglars will be reluctant to chance entering and being caught. An automatic timing device such as the GE Home Sentry Plug-In timer (Model 8123) is highly effective. It will turn lights on and off at a pre-set time, even when you're away from home. Plugging directly into a wall outlet, it fits behind or underneath furniture and does not take up counter space. All kinds of devices can be plugged directly into the front of the timer. The "manual" setting lets you control appliances like radios and lamps from their own control devices. The "automatic" setting means that the timer operates day after day

without resetting. An on/off override knob does not disturb either automatic or manual setting, yet allows you to turn the lamp or appliance on and off whenever needed.

If you live in a house, you may want more than one timer. Another, the GE Home Sentry 24-hour timer (Model 8117), is designed to be placed on a counter, shelf or end table. The model also offers the same advantages of the first. By using two or more timers you can set your downstairs lights to go off at a particular time, and the upstairs lights to go on a few moments later.

Such timers control lights which discourage thieves who would rather not risk entering a lighted home with the possibility of people being home.

5. Keep ladders locked up in the garage, or if they must be kept outside, fasten them securely to the side of the house or garage with a length of chain and a padlock.



6. Normally, residential exterior doors should be hung with the hinges on the inside. If for any reason it's necessary to have such a door open out with hinges on the outside, make certain that they are of a type specially constructed so that the pins cannot be removed by a burglar.

The ways some people ignore such hints as these is really a crime. Follow them and you won't be a bumbler in foiling a burglar.

**Sign of
the good
neighbor.**

The American Red Cross

advertising contributed for the public good



**M.D.A. FLOOR
COVERING, INC.**

RIVER RD., GLENMONT
463-8845 - 463-0034

ARMSTRONG - BIGELOW - LEES
CARPETS
ARMSTRONG VINYL FLOORING
Warehouse Discount Prices Always



Verstandig's

florist - Delmar, N.Y.

**FLOWERS
GIFTS
CANDIES**

Delmar, N.Y.
439-4946



It Says Here...

**No Inflation
Here!**

We're still offering you
52 issues of the **Spotlight**
(every week for
a year!)

for just

\$3

☐ renewal

Please enter my ☐ new subscription to the **Spotlight**.
I have enclosed \$3 for the next 52 issues.

NAME

Street Address

P.O.

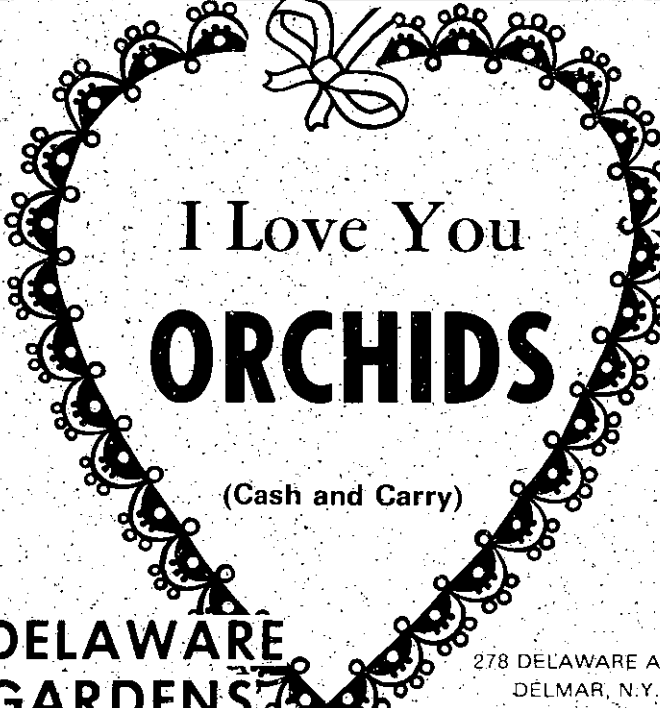
Zip

Meyers

Cross Country Skis
Sales — Rentals
1958 New Scotland Rd.
439-5966




TENNIS RACKETS
Restrung — Regripped
VIOLINS REPAIRED
BOWS REPAIRED
C.M. LACY 3 Becker Terr.
439-9739



I Love You
ORCHIDS
(Cash and Carry)

DELAWARE GARDENS

278 DELAWARE AVE.
DELMAR, N.Y.
439-4941



**THE NEW
WORLD
HOLIDAY
FASHIONS
FOR MEN
AND
WOMEN**

Delaware Plaza
Delmar.

Spotlight Weddings

Coughtry - Brayer

Betty J. Coughtry of Country Manor Way, Webster, New York, became the bride of Thomas R. Brayer at Holy Trinity Church in Webster on Saturday, Nov. 17. The bride is the daughter of Mr. and Mrs. James E. Coughtry of Slingerlands and the groom is the son of Mr. and Mrs. Laverne W. Brayer of Rochester.

A graduate of SUNY at Cortland, Mrs. Brayer is employed by Wayne Central School in Ontario. Her husband attends Rochester In-



Mrs. Thomas R. Brayer

TOO LATE TO CLASSIFY

REAL ESTATE FOR RENT
HOUSE FURNISHED or unfurnished, 7 rooms, garage, bus, Kenwood Ave., Slingerlands. 439-1692.

stitute of technology and is employed by Sear Brown Associates.

Moylan-Gregory

The Delmar Reformed Church was the setting on Dec. 22, 1973 for the marriage of Nancy Lee Moylan to Peter J. Gregory, USN. The bride is the daughter of Mrs. Grace S. Moylan and Neil L. Moylan of Delmar. The groom is the son of Mr. and Mrs. Ralph C. Gregory of Delmar. Rev. Gerard Van Heest and Rev. Charles Kaul-

Get Immediate Help!



The New York State Narcotic Addiction Control Commission will give immediate help to any addict who calls its toll-free hotline, anytime, day or night.

IN NEW YORK CITY
CALL: 246-9300

ELSEWHERE IN NEW
YORK STATE CALL:
1-800-522-2193
(toll-free)



Mrs. Peter J. Gregory

"YOUR KIND OF MUSIC"

METRONOME RECORD SHOP



70 CENTRAL AVE., ALBANY • 465-5126

Irv Cohan — owner manager
formerly with Van Curler's of Albany
WIDE SELECTION OF L.P.'s and TAPES
We special order your favorites.

The most experienced nurse in the world...

may not work out for a particular private assignment.

That's why every Medical Personnel Pool Nurse must have superior training, experience and ability—and our Attitude-OK. Call us for nurses patients like to be with and people like to work with.

MEDICAL PERSONNEL POOL
463-2171



fuss officiated at the double ring ceremony which was followed by a reception in the Church Hall.

The couple is residing in Gaeta, Italy where the groom is on active duty with the U.S. Navy.

Mulleneaux - Filipelli

Lisa Mulleneaux and Ronald Lee Filipelli were married on Dec. 19 in State College, Pa., with Rev. Ned Weller officiating. The bride is the daughter of Elbert Mulleneaux of Slingerlands and Doroth Mulleneaux of Delmar. The bridegroom is the son of Mrs. Earl D. Filipelli and the late Mr. Filipelli of Harrisburg, Pa.

The bride is a graduate of BCHS and has a Master's Degree in Library Science from SUNY-A. Mr. and Mrs. Filipelli are librarians at the Pennsylvania State University Library.

Hornachek - Meyers

Elizabeth J. Hornachek, daughter of Mr. and Mrs. Joseph D. Woods, Jr., Albany, became the bride of George S. Meyers, son of Mrs. S. Benjamin Meyers and the late Dr. Meyers, Coeymans Hollow on Dec. 29 at Christ

the King Church, Westmere, with Rev. Peter Pagones officiating.



Mrs. George S. Meyers

A reception was held immediately following the ceremony at Governor's Motor Inn, Guilderland.

The bride is a 1968 graduate of Albany High School and is employed by the NYS Department of Health. Mr. Meyers is a BCHS and Parson College graduate. He operates the Meyers Bicycle, Lawnmower and Cross Country Ski Center, 1958 N. Scotland Rd., Slingerlands.



THE CROWN OF OFFICE: Tom Patterson (on left) receives a baseball hat and bat as he assumes the office of President of the Tri-Village Little League. 1973 President Bill Reusswig (middle) makes the presentation as past President Ron Dutil smiles his approval. For complete information on the Tri-Village Little League 1974 Registration dates, times and place, turn to the inside back cover (GE ad).

Photo by Luois Spelich



Meyers Funeral Home

439-5560
DELMAR, N. Y.

Question:

Does coverage under the Servicemen's Group Life Insurance terminate with discharge?

Answer:

No — coverage under this program is extended 120 days after the serviceman's discharge.

Every serviceman on active duty status in the Armed Services of the United States is covered by \$15,000 group life insurance. Although group insurance normally terminates 30 days after separation from a commercial employer the serviceman's group life is payable if death occurs within 120 days of discharge or separation from service.

Any application for payment during this four month period should be made to the Servicemen's Group Life Insurance, 212 Washington St., Newark, New Jersey. Additional information may be found in the Servicemgn's Group Life Insurance Handbook. Copies are available in our office without charge.

Spotlight

CLASSIFIEDS

439-4949

439-4949

SPOTLIGHT CLASSIFIEDS ARE 15¢ PER WORD (\$1.50 MIN.). DEADLINE FOR FOLLOWING THURS. PUBLICATION IS FRIDAY, 4 P.M. PAYMENT MUST BE MADE IN ADVANCE. TEL. 439-4949.

ALTERATIONS

ALTERATIONS AND dressmaking, Jo Clark. 439-4138. tf

ALUMINUM SIDING

COMPLETE LINE aluminum products. Installation. Local references on request. Guaranteed workmanship, free estimates. Dick Domermuth — 768-2429. tf

ALUMINUM SIDING, new plastic coated all colors in stock, no down payment, 30 year guarantee. Free estimates. Statewide Modernization Corp., 104 Quail St., IV 9-0991. tf

APPLIANCES

Bob Sowers' DELMAR APPLIANCE

Complete line of RCA Victor • Whirlpool

SALES & SERVICE
239 Delaware Ave., Delmar
Phone 439-6723

BLACKTOP

MARIANI'S BLACKTOP, driveways, garage floors, sidewalks. Also jennite sealer. 489-2780. tf

BLACKTOP DRIVEWAYS, parking areas, sidewalks, garage floors. Free estimates. 482-5008 or 434-4920. tf

CABINETMAKER

FURNITURE REPAIR, bookcases, kitchen cabinets, picture frames. Vancans. 439-3541. tf

CARPENTRY

CARPENTRY, stairs, doors, windows, general repairs. Call 6-8 P.M. 756-2019. tf

CARPENTRY — MASONRY Painting — Repairs — "No Job Too Small" Call Cliff 765-4289. tf

COVENTRY, CARPENTRY, cellar to roof, remodeling, kitchen, garages, additions. 439-6042. tf

CARPENTRY, GENERAL REPAIRS, additions, roofing, kitchen remodeled, 30 years experience. McAlister. 439-5742. tf

BASEMENTS, KITCHENS, bathrooms, paneling, ceiling, floors, bookcases, stairs. Vancans. 439-3541. tf

BUILDING, REMODELING, framing, layout, roofing, ceramic tile, Arist-O-Kraft Kitchen Distributors. Full, one-stop service center. Experienced, reasonable. 439-6679 or 439-2757. 3t22t

CHILD CARE

LOVELY COUNTRY HOME, 24 hour service, 50¢ per hour. 767-9537. tf

Specializing in Babysitters for EVENING (min. 5 hrs.) OVERNIGHT or LONGER
Make your holiday plans Now!
University Family Services, Inc.
456-0998 • 456-0990

DRAPERIES

CUSTOM DRAPERIES, large fabric selection, shop at home — Barbara Schoonmaker, 872-0897. 4t22t

DRIVER TRAINING

ALL ALBANY AUTO ACADEMY

66 No. Lake Ave., Albany.
Beginners • Intermediates
Classroom Instruction Available
Tuesday, Thursday — 6 to 9
Saturday — 9 to noon
CARS AVAILABLE FOR
ROAD TESTS
Standard & Automatic
Call HO 2-1309

ELECTRICAL CONTRACTORS

DUFFY ELECTRIC — residential & commercial wiring — 24 hour emergency service. 439-5177. tf

G. W. ARNOLD & SON, Residential and commercial wiring. Free estimate. 35 years experience. 465-3065. 15t22t

FIREPLACE WOOD

FIREWOOD — mixed hardwoods, convenient pickup stack only \$3.95 each. GARDEN SHOPPE, INC., Glenmont. 439-1835 or Gunderland, 356-0442.

WELL SEASONED FIREWOOD, Beechnut, oak, maple, hickory, ash. Will deliver. 768-2874. 10t314

FIREWOOD — Seasoned mixed, split or logs, \$25 cord. 439-6679. 4t22t

FIREWOOD — 100% Hardwood. Split and delivered. Facecord 18" and 24" length. \$30-\$40. 861-8520.

FIREWOOD — All seasoned hardwood, delivered at reasonable prices. 872-0551. 4t22t

SEASONED FIREWOOD: cut, split, delivered, stacked. Phone 872-1115. 4t22t

FURNITURE REFINISHED

EXPERT FURNITURE refinishing. Drapes made to order. Also antiques for sale. Phone 766-4664. tf

HORSES BOARDED

JOSEPH'S TROUBADOUR STABLES, riding lessons, pony rides. Training. Rt. 9W. 767-9537. tf

RINGS, JUMPS — pastures, lessons English only; call 869-2482 or 482-0626. Roundabout Farm. tf

INTERIOR DECORATING

INTERIOR DECORATING — Delmar Decorators, Delaware Plaza, Call 439-4130. tf

INCOME TAX

INCOME TAXES PREPARED: Short, long, and small business. Robert Pangburn, 489-4925 after 5. 4t13t

JEWELRY

EXPERT WATCH AND JEWELRY REPAIRS. Diamond setting, engraving, wedding and engagement rings, reasonable. Your trusted jeweler. LeWanda, Delaware Plaza Shopping Center. HE 9-9665. tf

MASON WORK

EXPERIENCED, all types masonry, new or repairs. Guidara. HE 9-1763 evenings. tf

MASONS INC. QUALITY MASONRY

Fireplaces • Brick • Block
Plastering

A. Loux — 439-3434
R. Tice — 456-7848

AREA MASONRY

Specialize concrete work, additions, floors, patio, walks, foundations. All types of repairs — Chimneys, stucco, slate, waterproofing, etc.
Free estimate 459-5873

ORIENTAL RUGS

ALL SIZES AND Varieties at importer's prices. New, used and antiques; washing and repairing; free decorator advice; new Colonial show room; since 1925. Rustam K. Kerami Company, 1593C Central Ave., (1/2 mile west of Northway). 869-7829, 439-9419. tf

PAINTING & PAPERHANGING

VOGEL, PAINTING Contractor, interior, exterior painting, paperhanging. Free estimates. Guaranteed. Insured. JIM HE 9-9718 or JOHN HE 9-7922. tf



D.L. CHASE

Painting Contractor

Residential Specialists

Phone 768-2069

PAINTING CONTRACTOR: exterior, interior, paperhanging. Insured. Don Vogel. 489-7914, 434-8370. tf

DARON CONTRACTING — Interior, Exterior painting, Wallpapering, Remodeling. — Free estimates. 439-4834; 434-1996. tf

TOM SCHALLER

Interior Painting & Paperhanging — Clean, quality work. Free estimates, fully insured.
439-0413

NEAT PAINTING, any job, all year. Low rates. Insured. Dave Stone. 489-8293. 2t14

PAINTING, WALLPAPERING, ROOFING. Free estimates. J. Bradley, 869-0086 evenings. 8t32t

BILL WRISTON



PAINTING CONTRACTOR
• Fully Insured
Residential Expert
Paper Hanging
459-2537 or 439-3186

MOVERS

D. L. MOVERS, INC. 439-5210. Local and long distance, no job too small. tf

PLUMBING

B. P. WOOD

Plumbing & Heating

24 Hour Service
WATERLINE INSTALLATION
SEWER INSTALLATION
BACKHOE SERVICE

FULLY INSURED
"NO JOB IS TOO SMALL"
Phone 439-9454

E & J PLUMBING — no job too small, reliable, reputable, reasonable. 439-6337. anytime. 4t214

PIANO TUNING

APPRAISALS — REPAIRS, Roger DiNucci, 1368 N. Scotland Rd., Slingerlands. 439-2348. tf

PRINTING & MAILING

OFFSET PRINTING — Mailing Service — Mimeographing, Typing. G. Bloodgood — Mimeo Service, Delmar, N.Y. 439-3383. tf

SEPTIC TANK SERVICE

DELMAR SANITARY CLEANERS. Service: Tri-Village area over 20 years. HE-9-1412. tf

NORMANSKILL SEPTIC TANK Cleaners. We install dry wells, septic tanks, drain fields. 767-9287. tf



DAN & BETTY DRYDEN'S

SKI SCHOOL

for boys and girls ages 7-15
Saturdays — Jan. thru March.
All day instruction, practice, fun.
Transportation from Albany
& Delmar to ski areas provided.
For information & rates, phone:
462-5200



by **Bob Yaguda**

Much of the mystery in the business of buying real estate is concerned with the clearing of the title, before it can be transferred from one party to another, and the charges made for this. These expenses are normally lumped together under the heading of "closing costs." The buyer is usually only too aware of these closing costs. A good real estate man will explain in detail what these charges are for, and why each service is important to a prospective buyer.

When you use **COHN YAGUDA CRONIN REALTY, INC.**, 1648 Western Ave., Albany, 456-5101 you will find us most anxious to explain all the necessary details such as closing costs to you. We want to make sure you understand the entire transaction and we are here to do just that. Open: Daily 8:30-5, Sun. by appointment.

HELPFUL HINT:

Cash or a certified check is necessary to complete a purchase. Personal checks are very rarely accepted.



**cohn
yaguda
cronin**
456-5101

ROOFING

ASPHALT, slate, wood shingle, ice slides, gutters, repairs. Van Cans — 439-3541. tf

SKATES SHARPENED

ICE SKATES SHARPENED — also chain saws, saws, scissors, knives, pinkie shears, lawnmowers. 439-5156 or 439-3893. tf

SEWING MACHINE REPAIRS

SEWING MACHINES REPAIRED. Work guaranteed. Delmar Decorators, 3 Delaware Plaza, Delmar. 439-4130. tf

WELL KNOWN JOHN BESSON repairs all makes of sewing machines; in your home, free estimates. Sells second hand sewing machines, guaranteed for one year. 463-2520. tf

PERSONALS

FAT? OVERWEIGHT? Try the Diadex plan — Reduce excess fluid with Fluidex no prescription. Plaza Pharmacy. 4127

PERMANENT WAVING

SPECIALIZING IN Breck, Realistic, Rayette and Caryl Richards permanents, hair tinting and bleaching. **MELE'S BEAUTY SALON**, Plaza Shopping Center. HE 9-4411. tf

SNOWBLOWERS

ALL MAKES SNOWBLOWERS and snowmobiles repaired. Free pick-up and delivery. Al's Equipment Repairs. 768-2856. tf

SNOW REMOVAL

SNOW REMOVAL — Residential & Commercial. Call early and be prepared. Call 767-2760. tf

SNOWMOBILES

END OF SEASON SALE!!!

Come in and
"GET A QUOTE"

ON
The Few **SCORPIONS**
we have left!!!



JOHN S. ALBANO & SONS
POWER EQUIPMENT

15 Main St., Ravena • 756-2911
M, W, F 8-8; T, Th 8-6; S 8-5

TRUCKING SERVICE

PIANOS, APPLIANCES, light trucking. Call for free estimates. 456-3155. 41228

TABLE PADS

TABLE PADS — made to order. Delmar Decorators — 439-4130. tf

TREE SERVICE

HERM'S TREE SERVICE. Call IV 2-5231. tf

BROWNIE'S TREE SERVICE — tree stump removal. Insured. 456-7660, 456-3373. tf

HERM'S TREE SERVICE, call IV 2-5231. tf
TREESCAPE — Arboricultural Services. 439-7147. H.C. Mac Intosh, Prop. tf

WATCH REPAIRING

EXPERT WATCH AND JEWELRY REPAIRS. Diamond settings, engraving wedding and engagement rings, reasonable, your trusted jeweler, Lewenda, Delaware Plaza Shopping Center, HE 9-9665. tf



STOP LOOKING

for a General Contractor

LET DUFFY GIVE YOU A

FREE ESTIMATE ON YOUR: ADDITION

Customer Savings &
Satisfaction Guaranteed

B.A. Duffy, Jr. 439-5177

DUFFY ELECTRIC

KITCHEN
BATH
DORMER
REMODELING

Insurance Companies request 3 estimates

Banks request 3 estimates

The Attorney General's Office recommends 3 estimates

**ALLOW ME TO GIVE YOU ONE OF YOUR
3 ESTIMATES**

3rd Estimate Roofing

Ravena, N.Y.

756-6443



ALWAYS PERSONAL SERVICE

PROMPTLY and PROFESSIONALLY

for ALL of your REAL ESTATE needs including relocating you any place in the U.S. and Canada.



**Klersy-Ross
Realty, Inc.**
439-7601

"A NUMBER IT PAYS TO CALL"

WANT TO SELL?

or just curious about the current value of your home! . . . whatever your motive, we will provide a Market Research of your property at no obligation to you. Call today.



Realtors

A GALLERY OF HOMES

489-8551

NEMER



Rt. 7 West of Latham Circle
Latham, N.Y. • 785-5581

BILL'S LOCKSMITH
Key Duplicating &
Locksmithing
• 439-2720 •

**BOULEVARD
DECORATORS**

Specializing in custom made.
REUPHOLSTERY
(10 day delivery)

SLIP COVERS

Fabric or Plastic

DRAPERIES

- Our own workrooms
- Fabrics in stock

**SHOP AT HOME
FREE Decorator Service**

472-9191

BankAmericard - Master Charge

WATCHES REPAIRING, expert workmanship. All work guaranteed. Also engraving, diamond setting watch bands. Harry L. Brown, Jeweler, 4 Corners, Delmar. 439-2718. tf

WINDOW REPAIRS

GLASS AND SCREEN, wood and aluminum — repaired and replaced. Roger Smith Paints, 253 Delaware Ave. — 439-4468. tf

WINDOW SHADES

CLOTH SHADES, in stock and to order — custom wood-shades and narrow-slat blinds. Delmar Decorators 439-4130. tf

MERCHANDISE FOR SALE

FURNITURE

Our low-cost operation policy enables us to bring you **BIG SAVINGS** on NEW furniture, rugs, bedding.

BURRICK FURNITURE
560 Delaware Ave., Albany

Just across the Thruway Bridge
in Albany 465-5112



PIANOS! ORGANS! 150 in stock. Brown Piano Organ Mart. 459-5230. tf

IT'S TERRIFIC the way we're selling Blue Lustre to clean rugs and upholstery. Rent shampooer \$1. Delmar Lumber, 340 Delaware Ave., Delmar. tf

KNAPP SHOES. Cushioned comfort. H. Russell Weiss, Glenmont 12077. 465-6091. 20t128

PARTY CAKES — having a wedding, shower, birthday? Only a cake by Faith Reed will be right for your special occasion. 439-5640. 2127

ORGAN: Hammond T with rhythm rail. Excellent condition, \$1095. HE 9-3404. 21214

GARAGE SALE — Feb. 9 & 10th, 10 A.M. to 4 P.M. 12 Gardner Terrace, Delmar. Miscellaneous Articles.

BEDROOM SET. White provincial, 6-piece, single canopy bed. 438-4785.

SKIS — FISCHER Superglass competition, used once; new condition, \$60.00. Hart competition 170's, good condition, \$25.00. 765-2261.

HOT POINT portable dishwasher in excellent condition, \$75.00. 439-1421.

SKI BOOTS, size 4 & 8; hockey skates size 5; girl's figure skates size 2; wood skis 180 cm. 439-5351.

DINING ROOM SET. Early American maple, 7 piece set. 439-5177. 21214

VICTORIAN HEADBOARD and footboard with lion head carving. Call after 6:00. 439-9119.

For sale:

Antique sleigh bed, \$110. Danish modern couch, brown, gold, \$120. Castro convertible couch — opens to double bed, blue, green, like new, \$275. Buckle ski boots: child's size 13, \$10; men's size 8-1/2 med., \$15.
- 439-4122

BABY GRAND PIANO, excellent condition, asking \$600. 439-0467. 2127

PETS

House of Pierre

We are dedicated to making your pet more beautiful.
Professional Grooming



239 DELAWARE AVENUE.
439-7907 or 439-1800

LHASA APSO for sale, best offer, 1 year old, partially housebroken. 439-3128.

AUTOMOTIVE

Prevent RUST on new cars. **STOP RUST** on old cars. With our system, we **RUST-PROOF** complete under carriage, inside doors, inside rocker panels, inside trunk. **Appointment only.**
JOE KELLER'S MOBIL
463-7712 • Rt. 9W • Glenmont, N.Y.

'73 MGB, 10,000 miles, tape deck, \$2900. 756-9391.

JUNK CARS REMOVED — Free, if complete. Joe Messina's Garage, Selkirk. 767-9971. 21214

Antique parlor stove, wood-burning, \$200.00 firm. '71 Auto-Ski snowmobile, 40 hp, Sachs for parts, \$125. Used bathroom sink, complete, \$10. Tool box for pick-up, \$25.00.
439-5935

**PROFESSIONAL RELIABLE
MAINTENANCE**

Remodeling, painting, carpentry, cleaning, home repair — interior & exterior — no job too big or too small. Free estimates, insured, guaranteed quality work.

371-4669 6-9 P.M.



FIREWOOD

5 x 8 x 18
DELIVERED

ART ROSE

439-6437
462-9059

Master Charge BankAmericard

**IF YOU'RE TIRED OF WAITING
IN LINE FOR GASOLINE —**

STOP IN AT

CAPITOL



for immediate delivery

75 NEW & USED CARS
TO CHOOSE FROM
463-3141

home of 100% guaranteed used cars
ROUTE 9W, GLENMONT

"IN OUR 53RD YEAR"

residential properties

appraisals

relocation services

land

new construction

guaranteed sales plan

commercial and industrial

division



REALTORS

264 DELAWARE AVENUE, DELMAR • 439-9921

Area's Oldest and Largest

SAAB

Dealer . . . with complete parts dept. AND SERVICE!

Test drive a Saab at

**New Salem
Garage**

New Salem, N.Y.

765-2702

REAL ESTATE FOR RENT

ELSMERE — furnished efficiency apartment on Delaware Avenue, convenient to bus line and shopping. One person, security, lease, no pets, \$150. 864-5081. 21214

DELMAR — 3 bedrooms, heated, garage, adults, no pets, bus line. Evenings 439-1763. 2127

SITUATIONS WANTED

ODD JOBS, repairs, attics, cellars cleaned, carpentry, painting. 463-8882. McGraw. 2127

HAIRCUTTING AND styling in your home. Call Philip 271-8442, 237-3633, 462-2537. 2127

BABYSITTING by experienced mother, my home, 9W, Glenmont. Playmates. 462-0626.

OMAR SHARZ magic shows. Children's parties, age 11 and under. 768-2050. 2127

CARPENTRY — fine & rough. Rooms — basement, attic. College student, inexpensive, refs. After 7 Kevin 439-5502. 2127

HELP WANTED

AVON CALLING — buy or sell. Mrs. Calisto. St 5-9857. tf

RECEIVING CLERK — woman's apparel. Full-time. Must be energetic and accurate with figures. Permanent position. Mon.-Fri. Salary dependent on experience. Call H. Rasker for appointment. Town & Tweed, Delaware Plaza, Delmar. 439-4038.

FULL-TIME SALESMAN, experienced in men's clothing. Part-time salesmen also needed. Experience not necessary. Apply Ari Andrietti, Westgate or 20 Mail. 482-7778. 21214

WOMAN NEEDED

NEW POSITION FOR LOCAL FIRM. Responsibilities involve packing orders, inventory control, ordering and some typing.

5 days: 6-8 hrs. per day • 439-7618

ROOM WITH BOARD

PARENTS BOARDED; lovely country home. Visit with them anytime. 767-9537. tf

NORTHEAST FRAMING

1526 New Scotland Avenue
Slingerlands, N.Y. 12159
NOW OPEN SATURDAY 10-4

Tues., Wed., Thurs. 10 to 4 or by app't.
439-7913 439-6953

CEILINGS ARE MY SPECIALTY

I also do panelling, home repairs & remodeling. 25 years a pro. Call Harry 489-5302 after 3 P.M.

BUYING? or SELLING?

Contact
JOHN J. HEALY
Real Estate Broker
439-7615

CARPENTRY

BOB KIBBEY CONTRACTING

General Carpentry & Repair Work
Kitchen, Bath Remodeling
Paneling • Plumbing
Int. Painting
Repairing
— 439-3843 —

"A UNIQUE OPPORTUNITY FOR
CHILDREN 4 THRU 8 YEARS OLD"

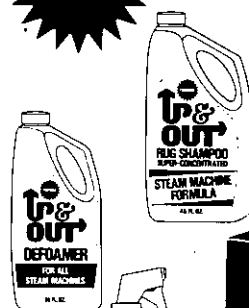
YAMAHA MUSIC SCHOOL

35 FULLER ROAD, ALBANY

ANNOUNCES OPENINGS IN BEGINNER CLASSES

Sat. 2:30 (3) • Thurs. 3:30 to 4:30 (4)
PHONE 459-6221

DEMONSTRATION of New STEAM CARPET CLEANER



HOME RENTAL USE

the most modern concept
in Professional
Carpet Cleaning

DEMONSTRATION — SAT., FEB. 9th
10:00 a.m.-Noon

**HILCHIE'S
AMERICAN
HARDWARE
& GIFT SHOPPE**

235 DELAWARE AVE. — DELMAR



Let's Make Your Home Our . . .

HOUSE OF THE WEEK



\$42,900

Newly listed all brick ranch on 1/2 acre site with a scenic view of the mountains. Spacious living room with fireplace, large country kitchen, 3 bedrooms, 2 baths, family room with fireplace, den or 4th bedroom and 2 car garage. Plus an attractive 22x37 ft. heated outbuilding ideal for storage, workshop, or apartment. In excellent condition.

WE ARE KNOWN . . .

"BY OUR GOOD LISTINGS!"

ROBERTS

REALTORS

489-3211



Applebee Funeral Home

Inc.

403 Kenwood Avenue
Delmar, New York

Jacoba P. Applebee, Lic. Dir.



... NOW OPEN TO THE PUBLIC ...
Specializing in Banquet Facilities for Special Events
Call: Mrs. Robilotto, 439-3392 for Reservations

Tall Timber Country Club
Hilton Road, Slingerlands

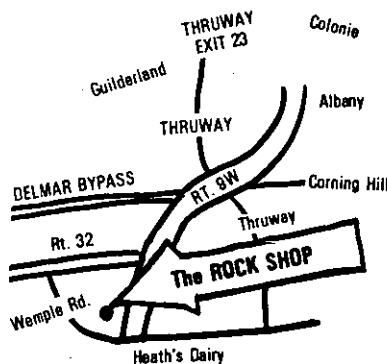
ROCK HOUNDS AND CURIO COLLECTORS

for the Beautiful &
Unusual in Gifts
Visit the newest and one of
the most unique gift shops
in the Capitol area.

GEODES — Custom Jewelry
Seashells • Driftwood
Candle Craft • Ceramics
Paintings

Hours: Mon.-Fri. 11:00-9:00
Sat. 10:00 • Closed Sun.

RT. 9W, GLENMONT, N.Y.
434-8963



4 miles south of Thruway Exit 23,
rear of Clara's Restaurant

by LEVERE L. FULLER

Wandering & Wondering . . .

WE'VE ALREADY HAD TO EAT OUR WORDS in last week's column which said that recycled paper had been rejected in favor of another. We discovered that the paper-availability situation was worse than we had been told and we understand that this uncertain paper future may continue for the next several weeks. Anyway, rest assured that the very best that is available will be used — even though the color tint may vary from signature to signature.

THIS NOTE CAME TO US from a new subscriber:

"We are disappointed in the **Spotlight** in past years. Our time is valuable and it takes us an endless amount of time to wade through the ads to find the small bit of news that there is each week. As I see this community, we are an intelligent, above average economic unit. Couldn't you do an extensive ad section four times a year, each season, and charge the difference and eliminate those weekly nothings?"

The first to object to our subscriber's plan would be our advertisers. The suggested four-times-a-year-coverage couldn't possibly carry the messages they hope to get across to the potential buying public. Even louder in their protestations would be the hundreds who use our Classified pages. The classified advertiser usually has a particular message for a particular week and that's when he wants it to appear.

On top of this, the **Spotlight** actually carries **no greater** volume of advertising per page than most national magazines. This may be hard for our writer to believe, but it is a fact. The difference in revenue is \$120 for a page in the **Spotlight** as measured against thousands for the national publication.

Probably our subscriber is even more upset with last week's issue which was about 3% heavier with ads. But please remember this: our advertisers are almost exclusively **small business men**, not huge corporations with billions behind them. And that

TOLL GATE ICE CREAM LUNCHES & DINNERS

Slingerlands

WE ARE CLOSED FOR VACATION
from FEB. 10 - FEB. 24

Back from vacation and reopen for business

MONDAY, FEBRUARY 25

statement reminds us of another: We predict that the coming six months or year will be about the severest survival test the small business man has ever experienced. Here are a couple of "instances": a baker friend of ours uses a cooking oil which could be purchased for about \$5 for a 5-gallon tin — until a month or so ago. The price today for the same quantity of the same item: \$19.80; a barrel of flour sold for under \$10, today the price approaches \$20 and it's still going up! Our friend said that if he raised the price of a loaf of his bread by the same percentage, he would have to go out of business: nobody would buy it! This is what the small business faces in the foreseeable future.

THAT OIL SHORTAGE, REAL OR CONTRIVED, is still making headlines. NYS Attorney General Louis Lefkowitz said in an interview the other day that he is completely suspicious of the whole situation and has asked the Legislature to empower him to force the oil companies to furnish facts and figures, under oath, to show the extent or depletion of on-hand storage supplies. Trouble is, by the time the Capitol Hill Wizards get around to passing a bill, we won't need it any more!

An additional couple of facts that disturb us are these: all major oil companies are trying to prove that the shortage is real by taking full page ads in newspapers and magazines telling us that it's a fact! We're supposed to take the golden words of the leading advertising agency ad writers as gospel! Rubbish! And now it has been found that instead of using large sums of money these past few years to solve a coming crisis, the oil companies charged it off as expansion — actually, they were building new and bigger gas stations!

The Attorney General also said that if he could get just one iota of concrete evidence of a phony oil shortage, he would launch criminal and civil charges against every company involved.

Then there was the news story that the US Congress has scrubbed the energy bill because President Nixon objected to the section which called for penalties for "windfall" profits that the oil companies might now be earning because of the shortage and the drastic jump in prices.

We hope for Pres. Richard M. Nixon's sake that he has been honest and truthful in his energy crisis announcements — because if it's ever proved that the White House and the oil companies planned this thing, impeachment should be his **least** punishment, then let the criminal courts take over from there.

If we sound bitter, it is because the American public has been duped, confused and lied to (by members of the present and recent-past White House staff) so often over the past year that today one doesn't know what to believe. There is no way of sifting the camouflage from the truth.

We have to give our President an "A" for guts. The hard-hitting State of the Union speech was delivered as though he were addressing a large gathering of friends — when it is a known fact that even the members of Congress who are Republicans are straddling the fence on the impeachment issue. It must take a tremendous amount of guts to stand before a group, many of whom are planning your downfall and do it with the aplomb and apparent ease he showed.

We had thought that the hostile Congress would sit on its hands with only occasional luke-warm attempts at applause. Not true. The outbursts of seeming approval for his proposals were both spontaneous and loud. Just what is it about politicians that they can individually and collectively damn the man when he's in the White House and applaud his every utterance to his face?

Needless to say, this President who faced Congress for his State of the Union is the same man who has been in the White House these past 5 years.

community corner

YOU'LL WANT TO SAVE THESE DATES

What: Registration for Tri-Village Little League 1974 Season.

When: Saturday, February 23 — 12 Noon to 3 P.M.

Saturday, March 2 — 12 Noon to 3 P.M.

Saturday, March 9 — 12 Noon to 3 P.M.

Where: St. Thomas School, Delmar.

Simple Rules: Boys must be residents of the Town of Bethlehem, 8 through 12 years old, must present birth or baptismal certificate to confirm age and be accompanied by a parent or guardian. A minimum of a \$6 contribution **per family** is requested at time of registration, however, no boy will be deprived the opportunity to play because of family financial circumstances.

Tri-Village Little League is one of the larger of the leagues in this area. Its multi-diamond complex on lower Kenwood Avenue in Delmar is the envy of other Little League franchises. The record, over the years, of the manager-coach accomplishments, has been excellent. And many of the boys who have played have gone on to distinguished performances in high school, Babe Ruth, Legion, Senior Babe Ruth, Twilight League and college baseball.

There are two very important reasons why Tri-Village has had to up the registration for the coming season. First, attendance at the games has been decreasing over the past several years which means that the collections and refreshment stand sales are down. And second, the price of uniforms and playing equipment has gone up almost 50%. Therefore, it is necessary that the registration fee cover most of the league operating expenses, otherwise there would be a deficit at the end of the season which could eventually force the league to discontinue operation.

There have been many pro and con arguments over Little League but it still remains as the finest training ground for the young baseball aspirant so far invented. The training these youngsters receive in how to best play the organized and supervised game of baseball is a priceless experience.

Community Corner, a public service column of important community events, is sponsored by the people of the

PLASTICS DEPARTMENT
GENERAL  ELECTRIC
SELKIRK, NEW YORK 12158



I'D LIKE TO CALL
YOUR ATTENTION TO -
THE ECONOMY
OF A

COMPACT

IT'S TIME TO SEE **Cousin Bud**

For Basic Economy

FORD PINTO

America's Best Selling Sub-Compact

Current Price

\$2442

Plus Freight, Service and
Sales Tax.

For Proven Reliability

FORD MAVERICK

The Economical Family Car

Current Price

\$2591

Plus Freight, Service and
Sales Tax.

For Roominess

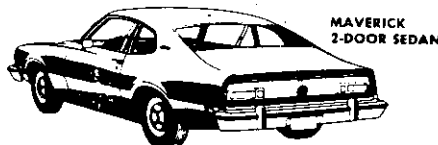
FORD TORINO

Plus Freight, Service and
Sales Tax.

\$2782



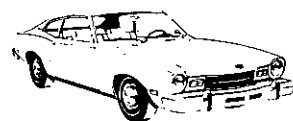
PINTO
SEDAN



MAVERICK
2-DOOR SEDAN



TORINO



COMET 2-door Sedan
The solid little economy car.

\$2646

current price plus freight,
service and sales tax



MERCURY MONTEGO

4-door Sedan

The luxurious, personal size car.

\$2836

current price plus freight,
service and sales tax



MUSTANG II

Hardtop — the right car
at the right time

\$2895

current price plus freight,
service and sales tax

**DON'T BUY A FOREIGN
CAR 'TIL YOU'VE PRICED
OUR COMPACTS**

See why we have it over the small foreign car
in economy and price!!!

24 months or 24,000 mile guarantee available
on any new Ford or Mercury at Bud Kearney's



CAR LEASING
AND RENTAL
AVAILABLE



CHARGE IT

DINERS CLUB
CARTE BLANCHE
AMERICAN EXPRESS

BUD KEARNEY, INC.

FORD — MERCURY •

Ravena, N.Y. • Open Evenings • 756-2105

See the 1974 Fords &
Mercurys . . . "Cousin
Bud" says our only ex-
tras are country prices,
good service, and ap-
preciation.

MR. MICHAEL J. D'ATTILIO
431 DELAWARE AVENUE
DELMAR, NEW YORK 12054

