

The SPOTLIGHT

VOLUME 1, NUMBER 52

DELMAR, NEW YORK

NOVEMBER 21, 1956

 **BABY DERBY - DEC. 1** 

6 days every week our truck makes Laundry pick-ups and deliveries in your neighborhood. Why not let your PHONE LINE BE YOUR WASH LINE?

CALL 9-3418
HISTED'S
226 Delaware Avenue, Delmar
Pick up & Delivery

MAGIN'S
GIFTS IN LEATHER
Est. 1872
222 Washington Av.
Albany, New York

Handbags
Billfolds
Belts
Desk Sets
Manicure Sets

THOUSANDS OF OTHER GIFTS
To Choose From

ATTACHE & BRIEF CASES
(With or Without Files)
from \$8.95 to \$50



Store Hours: 8 a.m. - 9 p.m.
TILL CHRISTMAS

Know Your Merchant

HARRY S. KEELAN:
Nat'l. Comm. Bank & Trust Co.

Few business men in the Tri-Village area have become such an integral part of the community as Harry S. Keelan. The only banker in our fast-growing township, he is consultant and father confessor for all the financial problems heir to the human race.

A native of Beacon, New York, he was overseas in the first World War, serving by coincidence in the same regiment as Nathaniel Adams Blanchard, for whom our Legion Post is named. After the war he married a hometown girl and came to Albany to seek his fortune.


(Continued on Page 2)



Harry S. Keelan

World's Fair Tavern
371 Madison Avenue
Albany, New York
BEST PIZZA IN TOWN
62-5012 62-9374

BETHLEHEM ELECTRONICS
offers you guaranteed service and sales of T.V. sets, radio, phonographs and other items in the electronic field.
9-647 or 62-4358



Happy Thanksgiving!

CLOSED THIS WEEKEND
November 22, 23, 24

DOING ONE THING WELL
HANDY-DANDY

Cleaners
SINCE 1925

Our Process bears the

WARRANTY OF A REFUND OF MONEY
Guaranteed by
Good Housekeeping
IF NOT AS ADVERTISED THEREIN

SPOTLIGHT

is published weekly on Thursday at Delmar, New York, by Spotlight, Inc.

DIAL PO 8-2143 or 9-798; if no answer, call 9-3410.

KNOW YOUR MERCHANT

(Continued from Page 1)

In 1929 the local men in Delmar started a small bank, "The Bank of Bethlehem," and asked Mr. Keelan to manage it for them. Although it took him and his wife three years to decide Delmar was the ideal place for them to live, the possibilities of this community were at once apparent to him.

In 1936 the National Commercial Bank & Trust Company bought (or in the banker's phraseology, "absorbed") the business.

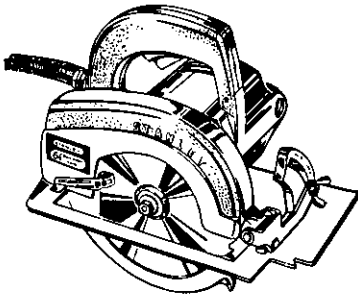
During the war Mr. Keelan was transferred to the downtown office. But to the oldtimers in the area, it was cause for rejoicing when Herry returned to "his" desk.

A strong community-minded man, Mr. Keelan sees tremendous investment possibilities here - and we gather, the bank is planning to expand its facilities further fairly soon, which certainly supports his theory. He gives credit to the foresighted planning of our school system, as one of the main reasons for the town's development. "People from all over the country are transferred to the Albany area, and, if they have children, there is only one possible home solution for them. Bethlehem was years ahead of the other suburban areas in developing their school system.

Harry and Edythe's two daughters are fine examples of 12 years each in our schools: Frances, a well-known radio singer when she was living at home, is married to a chemical engineer and lives in New Jersey; Irene left for Houston, Texas, just six months ago to be associated with a branch store of "Joskes."

Mr. Keelan is a charter member and past president of Kiwanis, charter member of the Nathaniel Adams Blanchard Post 1040, American Legion, and a member of the Bethlehem Lodge F & AM.

THE FINEST POWER SAW YOU CAN BUY



NEW! STANLEY

H68-6 1/2" Heavy Duty
At a Low \$64.95

A new popular size has been added to the fine line of Stanley Builders Saws. This 6 1/2" size will also make all the cuts necessary to build a standard home.

- ★ Cuts 2 x 4 at 45°.
- ★ Completely Ball Bearing.
- ★ Features "Motor-Saver" Drive.
- ★ Exclusive "Free-Start" Guard.

SAW KIT H668

Includes: Strang Metal Case, H68 Saw, GA-H266 Ripping Guide, P-H6823 Comb. Blade, Wrench and Lubricant. **\$80.95**

See It Now . . . At

DELMAR LUMBER

9-968

GRADUATES are in great DEMAND

ENROLL NOW FOR THE COMPTOMETER COURSE

New Registrations now being accepted Morning, Afternoon or Evening Sessions

FREE PLACEMENT SERVICE

Call or Write for full Information

ALBANY COMPTOMETER SCHOOL

170 State Street, Albany, New York
Capitol P. O. Box 7292 Phone 4-0616

Be sure to watch for next week's SPOTLIGHT and those fabulous DOLLAR DAYS

CARMOTE PAINTS



"IT PAYS TO START WITH A BETTER FINISH!"

Plenty of Paint
. Plenty of Parking

SCHNURR & WOOD

366 Delaware Avenue, Delmar
We Deliver Tel. 9-1878

SCHNURR & WOOD

GARDEN CENTER
FEED - SEED - FERTILIZERS
Holland Bulbs - Scott's Products
366 Delaware Ave., Delmar 9-1878

Fowler's Liquor Store

SEE GEORGE OR HARRY FOR BETTER SPIRITS

Happy Thanksgiving

WE DELIVER
Theatre Building

333 Delaware Avenue 9-2613



ORDER AND GET YOUR FIREPLACE



NOW - FROM

Reid's Fireplace Wood

Glenmont, N.Y. Phone Albany 5-4609
-YOUR OWN WOOD CUT TO SIZE-

In Slingerlands

FRANCIS CLEANERS

TOLL GATE CENTER

Courteous - efficient - economical Service

Al & Mary Bleau Call 9-3751



THE HITCHING POST
For The Treasured Gift
Country Crafts and Imports

Gladys Smith

TEL. EAST BERNE 24J2
BERNE, NEW YORK

Open 'til 9 Every Evening

MERCHANDISE FOR SALE

- WALNUT DINING room set, \$40 complete. 9-2837.
- BELL PORTABLE elec. sewing machine, never used, cost \$89.95, will take \$50; Blessing trumpet with case, ex. cond., cost \$129, will take \$75. 9-4238.
- BEAUTIFUL NEW WEDDING GOWN, lace and satin, size 9, cost \$100, \$45. 9-3370.
- EASY WASHER, wringer type, gd. cond., \$10. 9-812.
- MAN'S BOWLING BALL and bag, Brunswick, \$10. 9-2040.
- RUG, 9x12, Bigelow Beauvais, all wool, two-tone grey with pad. 9-2827.
- FLORIDA BOUND: \$2500 ranch mink coat, size 16-20, any offer over \$500. 9-2638.
- 275 gal. OIL TANK, prac. new, accessories, complete for \$15. 9-4132.
- BOX COUCH, gd. cond., 4 pillows, 2 slip covers, \$50. 9-1706 evenings.



call
6-0768
or 6-0419

Esso

for

HEATING OIL

Economical—Clean Burning
TOUGHER HEATING
Glenmont

SPOTLIGHT First Anniversary TRI-VILLAGE DOLLAR DAYS - Nov. 30 & Dec. 1

MUSIC LOVERS

Visit our soundproof studio and hear the largest selection of Hi-Fi equipment in the Capital District with experienced audio consultants to guide you.

HI-FIDELITY CENTER

324 CENTRAL AVENUE (Corner Quail), ALBANY
Open Evenings till 9 P.M.

DO YOU HAVE A WINTER STORAGE PROBLEM FOR YOUR LAWN MOWER?

Call Us—We'll Pick It Up and Store It FREE for the Winter Months

- We'll put your mower back in perfect condition—sharpened and repaired for next season at our regular rates. You pay FOR SERVICE AND REPAIRS ONLY!

FREE PICK-UP STORAGE DELIVERY NEXT SPRING Phone 4-4971

TAYLOR & VADNEY, Inc.

Albany's Finest Sports Store
303 Central Ave. Open 8 to 9, Tues. Thru Fri.
Open 8 to 5, Mon. & Sat.



Living Room Set includes
Sofa, Chair and up to 4 cushions

Hurry! Hurry!

IF YOU WANT THESE . . .

*Custom Made Slip Covers
for the Holidays!*

MADE TO ORDER

only \$69. Complete

Beautifully custom tailored on your furniture as only our experts can do! In our better quality fabrics. All vat-dyed and pre-shrunk, of course! All seam welted and securely bound. Zipper closings, Box pleated, Tailored or ruffled skirts to suit your desires.

TAKE THREE MONTHS TO PAY AFTER COMPLETION AT NO EXTRA COST

Open Monday through Friday
till 9 P.M.
Open Saturdays till 6 P.M.

**Marcelle's
FABRICS**

Our Decorator will call at your home with samples . . .
no obligation of course

331 CENTRAL AVENUE at Quail

Vase Arrangements

LARGE and POM-POM

Chrysanthemums

Cut Fresh - Delivered Same Day!

Call us and let's talk about the centerpiece for your Thanksgiving table!
Made to your individual taste

GREENLEAF GARDENS

295 Elsmere Av. Call 9-2009 or 9-790

HERE ARE TWO
GUARANTEED

Bacterial Agents
FOR SLUGGISH

SEPTIC TANKS
CESSPOOLS DRAINS

FX-4 is an all year 'round preventive against clogging . . . specifically compounded for all enclosed SEPTIC TANKS where there is an ABSENCE of air and light. These bacterial cultures, with their reproductive spore-bearing organisms, thrive under ANAEROBIC conditions.

FORMULA FX-11 - A bacterial cleaner for Septic Tanks and Cesspools . . . Clears organic waste accumulation from drain-pipes, etc.

**THE CENTER
HARDWARE**

Incorporated

Your Hardware, Sporting Goods and Housewares Center
9 Delaware Plaza Dial 9-655

MERCHANDISE FOR SALE

MOVING: 2 twin bedroom suites; living & dining room suite; Norge refrigerator; elec. broiler; sewing machine; garden tractor with all attachments; elec. chicken brooder; camp furniture. See them at 123 Elsmere Avenue.

MAHOGANY PIPE RACK, \$4; 'New Home' console sewing machine, \$55; Roll-away bed, \$15; white chenille double bed spread, \$12; green faille double spread, \$5; black velvet coat, \$10; 2 green metal chairs, \$5; bathroom hamper, \$3; dining room elec. fixture. 9-3045.

MAPLE ROPE BED, \$15; Fireside bench, \$10; gilt mantel mirror, \$7.50; blue and white coverlet, \$10; walnut marble top vanity, \$15. PO 8-2125 evenings.

DESK & CHAIR, oak, sec. type, gd. cond. \$20. 9-769.

LIONEL TRAIN, double diesel engine, 10 cars, 100 sections of track, 0 gauge, complete plasticville village, all like new, 1 yr. old, cost over \$200, sell for \$125. 9-4075.

ALMOST NEW white enamel oil & gas range, \$50; Antique 5-shelf corner whatnot; antique butler's chest, coffee grinder. 5-2017.

TABLE - Cherry drop leaf, ap't. size; Mirror mahog. suitable for dining or living rm., \$20; Sewing Cabinet, Martha Washington style, \$22.50. Small Gov. Winthrop mahog. desk, needs refinishing, \$15; New chair, snow shoe style, maple and ash frame, rawhide lacing seat and back, \$12.50. 9-4784.

BOUDOIR CHAIR, floral maroon, barrel back, \$15. 2-1814.

ELEC. RANGE, 40", gd. cond., \$50. 4-4558 after 6 p.m.

THOR WRINGER-TYPE WASHER WITH pump, \$45. 9-4736.

BABY CARRIAGE, prac. new, clean & in ex. cond.; cost \$60, sell \$25. 9-1015.

DREXEL MAHOGANY bedroom set, complete, cost \$375, \$150; 16' Custom Craft boat WITH Johnson Motor AND 12' boat trailer, ALL FOR \$550. 3-0913.

COMBINATION GAS & OIL kitchen range, 4 burners each, \$25. See at 1025 3rd St., Renss. or call 77-2391.

OIL HEATER, 2 burner, white porcelain; White metal kitchen cabinet; 2 chartreuse 30" table lamps. 9-3497.

OVER 100 YEARS OLD - 4 matched antique chairs, sacrifice at \$50. H. Webster Salisbury Road, Elsmere.

Dorothy Lynn

Thanksgiving Sale

Winter Woolen Sportswear

360 Delaware Avenue 9-4101

A. P. VERSTANDIG

Delmar
Nursery

FLORIST

Greenhouse: 454 Dela. Ave. Store: 390 Kenwood Ave.

FOR THE FINEST IN FLOWERS
ARTISTIC ARRANGEMENTS
for your

Thanksgiving Table

OR A GIFT FOR YOUR

HOSTESS

Call

9-856

9-3911

Inlaid
LINOLEUM Reg. 14¢ Per
NOW 10¢ Tile

BLACKER'S

MODERN FLOORS

288 Central Ave. - Open Eves.
Albany, N. Y.
4-6105 - 4-6106

FURNITURE REPAIRING
REFINISHING AND
RE-UPHOLSTERING

IRVING L. ROWLEY

5 Garden Alley, Albany 10, N. Y.

ANTIQUES RESTORED

4-4476 Telephones 4-6497

Free Estimates
Specializing in Building Basement

RUMPUS ROOMS

Material Selection Quality Workmanship

J. W. MICHAELS

Call 9-3823

Joseph
Bauhofer & Son

Manufacturing Jewelers

Diamond Experts & Setters for 4 Generations

**FINEST SELECTION OF
DIAMONDS & MOUNTINGS**

*Have Your Old Jewelry Redesigned and
Manufactured by Our Expert Craftsmen*

11 North Pearl St., Albany

Business
Alb. 4-4855

—Telephones—

Home
Delmar 9-2997



TRI VILLAGE ESSO SERVICENTER
309 DELEWARE AVE.
TEL. 9996 DELMAR, N. Y.



A SPECIAL GIFT

FOR YOU AT OUR LOCAL SERVICENTER

AN AUTHENTIC OLD TIME

SCALE MODEL AUTO KIT



by *REVELL*



Will be yours with each lubrication and
UNIFLO or ESSO EXTRA Oil Change

The following services are included
with our lubrication special...

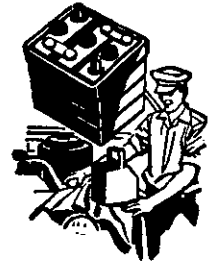
WE WILL CHECK

- ✓ **FAN BELT**
- ✓ **OIL FILTER**
- ✓ **TIRE PRESSURE**
- ✓ **BATTERY**
- ✓ **WIPER ARMS**
- ✓ **WIPER BLADES**
- ✓ **SPARK PLUGS**
- ✓ **COOLING SYSTEM**
- ✓ **TRANSMISSION**
- ✓ **DIFFERENTIAL**

(SEE GIFT OFFER ON OTHER SIDE)



**GET YOUR
CAR READY
FOR**



**BATTERIES
by ATLAS**

TROUBLE FREE FALL DRIVING

We are prepared to service your car with quality Esso Products . . .
After months of hard summer driving we will drain and refill your
crankcase with the finest . . .

UNIFLO or ESSO EXTRA MOTOR OIL

Keep your car on the road with . . .

ATLAS TIRES — ATLAS BATTERIES

ATLAS Perma-Guard ANTI-FREEZE

ATLAS OIL FILTER

FOR SERVICE — FOR QUALITY

STOP IN NOW!

TRI VILLAGE ESSO SERVICENTER

309 DELEWARE AVE.

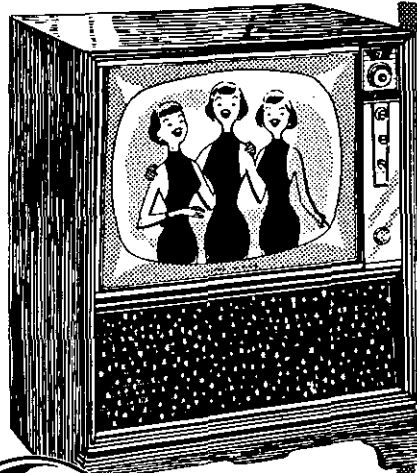
TEL. 9996 DELMAR, N. Y.

(SEE GIFT OFFER ON OTHER SIDE)

MERCHANDISE FOR SALE

MW WRINGER WASHER, 2 yrs., ex. cond., \$50; Tuxedo, latest style, like new, \$15. 9-2471.
 SMALL GAS HEATER suitable for 2 lg. or 4 sm. rooms, pipe and accessories, cost \$130, asking \$65. 9-1792 after 4 p.m.
 REMINGTON 20 GAUGE 5 shot pump gun, full choke, like new, \$50; Wood box trailer, gd. cond., \$40; Electric room heater, \$10. 9-797 after 4 p.m.
 SURPRISE THAT LITTLE GUY on Xmas morning with one of these two complete train sets that have been hardly used. Boy, what a thrill to set up one of these sets and see all of the remote control features . . . just like operating a REAL railroad. And at only a FRACTION of the original cost. Call me any evening at 9-1168.
 EVANS OIL HEATER, large. 9-2126.

TRI-VILLAGE DOLLAR DAYS Nov. 30 & Dec. 1



261 square inches of viewable area
 Model 21C160

TV
\$300

as little as

PER WEEK after small down payment

- Famous G-E Ultra-Vision — clear and sharp as a movie screen
- Aluminized picture tube
- Up-front push-button Power Tuning
- Dark-tinted safety glass tilted for glare ejection
- Set - and - Forget Volume Control
- Push-pull power switch
- Lighted number window over tuning dial
- Powerful G-E chassis
- Dynapower speaker
- New Remote Control Channel Selector (optional)
- In mahogany, white oak or cherry veneers

WHITMAN CANDY
CANDY CUPBOARD
SCHRAFFT'S
CANDY
 and
KEMP'S
 at
PLAZA PHARMACY
 Call 9-4451



SUBURBAN APPLIANCE
 DELAWARE PLAZA
 PHONE 9-3557

THE Perfect LAY-AWAY for Christmas

GRAPHIC® 35
 with PUSH-BUTTON FOCUSING
 CAMERA, CASE & FLASH
 ONLY \$89.50

SHELLHAAS CAMERA STORE
 Delaware Plaza Tel. 9-1472

M.O.N.E.Y. WHEN YOU WANT IT

WE MAKE LOANS TO FOLKS TO BUY
 TV • CLOTHES
 RADIO • RUGS
 TOYS • CARPETS
 FURS • LUGGAGE
 SHOES • JEWELRY
 TIRES • USED CAR
 GUN • BICYCLE
 TOOLS • TOASTER
 RANGE • FREEZER
 IRONER • BROILER
 FURNITURE
 UPHOLSTERY
 REFRIGERATOR
 VACUUM CLEANER
 WASHING MACHINE
 CAMERA • ENLARGER
 PROJECTOR
 PHOTOGRAPHIC EQUIPMENT

or anything to make your home and living more complete and happy . . . your work at home, in the shop, on the farm . . . easier.

We would like you to meet, talk with and know our Manager



Here are 3 ways we can help you do your HOLIDAY SHOPPING EARLY!

Our business is lending money for a day • a week • a month • a year or longer

1. IF YOU WANT A LITTLE MONEY FOR A SHORT TIME, GET

\$20 FOR 2 WEEKS AND REPAY	\$20.23
25 FOR 3 WEEKS AND REPAY	25.44
30 FOR 1 MONTH AND REPAY	30.75
2. IF YOU WANT MORE MONEY FOR A LITTLE LONGER TIME, GET

\$100 FOR 3 WEEKS AND REPAY	\$101.75
200 FOR 1 MONTH AND REPAY	204.50
250 FOR 1 MONTH AND REPAY	255.50
3. IF YOU WANT A LARGER LOAN WITH PLENTY OF TIME TO PAY, SELECT THE AMOUNT YOU NEED AND THE PAYMENT THAT FITS YOUR PURSE

Amount of LOAN	Amount of Monthly Payments for:		
	12 MO.	20 MO.	24 MO.
\$200	\$26.92	\$17.57	\$15.25
350	33.45	21.77	18.87
500	46.94	30.22	26.06

Payments include principal, interest and all charges.
 We like to say • And to most requests we do say • *Your Loan is O K*
 TELEPHONE • WRITE • or VISIT

UPSTATE LOAN CO. INC.
 2 DELAWARE PLAZA • at the New Shopping Center
 Delaware nr. Plymouth Ave., ELSMERE • Tel.: Delmar 9-911
 Office Hours Daily: 10 to 6 • Fridays 10 to 8 • Saturday 10 a.m. - 1 p.m.
 LOANS MADE TO RESIDENTS OF ALL NEARBY TOWNS

**YOUR FINANCIAL SHOPPING CENTER
OFFERS A WIDE VARIETY OF BANK SERVICES**

To Insure the Safety of Your Cash and Valuables,
National Commercial Offers You

- | | |
|------------------------------|-------------------------|
| CHECKING ACCOUNTS | CHRISTMAS CLUB ACCOUNTS |
| CONVENIENT CHECKING ACCOUNTS | SAFE DEPOSIT BOXES |
| SAVINGS ACCOUNTS | TRAVELER'S CHEQUES |
| UTILITY CHEQUES | |

To Meet the Borrowing Needs of Individuals and
Businessmen, the Bank Provides

- | | |
|------------------------|------------------|
| PERSONAL LOANS | MORTGAGE LOANS |
| AUTO LOANS | COMMERCIAL LOANS |
| APPLIANCE LOANS | COLLATERAL LOANS |
| HOME IMPROVEMENT LOANS | |

Did you know that a Bethlehem Branch customer can also use the facilities of our other offices in Albany, Rensselaer, Colonie, Menands, Altamont or Ravena?

Friday Evening Banking Hours - 6 - 8 P.M.

**NATIONAL COMMERCIAL BANK AND TRUST CO.
DELMAR**

Member Federal Deposit Insurance Corporation

ZONOLITE DEMONSTRATION

Sat., Nov. 24 — 8 A.M. to 12 Noon

Come In!

And discuss your insulation problem with a factory representative
of the world's largest producer of Vermiculite

See How ZONOLITE Is Made!

See the Test by Fire!

DOOR PRIZE - FREE ESTIMATES - FREE INSTALLATION TOOL

F. F. CRANNELL LUMBER CO.

278 Delaware Avenue, Elsmere

9-927

Ralph S. Butler & Sons
Incorporated

"All Forms of Insurance"
252 Delaware Ave., Delmar 9-4581

**GENERAL INSURANCE
KATHARINE G. HERRICK
AGENCY**

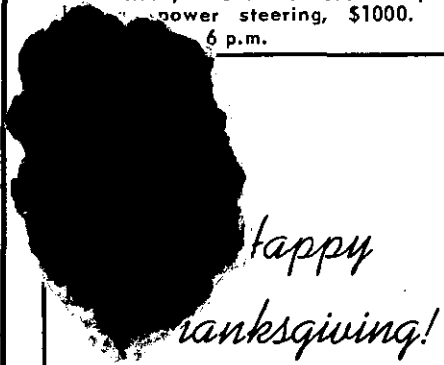
119 McCormack Road
Slingerlands 9-2763

PERSONAL SERVICES

- FOR PROFESSIONAL Window trimming with an individual touch, call 9-4715.
ATTENTION: Old pianos taken away free. 4-2953.
LIGHT TRUCKING—refrigerators, stoves, furniture, etc. Storm windows & screens repaired. Call Ken Lake-9-4424, 9-3297.
WANTED: TYPING AT HOME. RO 5-2051.
CATERING—For Teas, Cocktail Parties, Weddings, Receptions or any other functions. Let us have the work and worry. Call 9-3160 or 62-3235.
WANTED—Typing at home. 9-785.

AUTOMOTIVE FOR SALE

- '49 HUDSON SUPER SIX, good condition, extra tires, incl. snow. 9-2472.
DOODLE-BUG, Willys, 4 cyl., shortened frame, snow plow. \$45. 9-1379.
1951 NASH Statesman, custom, 4 dr., radio and heater, overdrive, ex. cond., \$395. Alb. 3-8301.
'52 OLDS 98 Holiday coupe, A-1 cond. throughout, 4 new Premium white sidewall tires, 2 snow Suburbanites, radio, power steering, \$1000. Call 6 p.m.



FOR THOSE EXTRAS
THAT WILL MAKE
THIS COMING WEEKEND
MORE ENJOYABLE . . .

**DELMAR
LIQUOR STORE**

Four Corners Delmar

Pete & Kaye Jones
WE DELIVER

Stop that Itch
with

BRENNANS OINTMENT

Regular - In Tubes - Rectal
Prompt relief or money cheerfully
refunded

AT YOUR DRUGGIST

Church News

NEW SCOTLAND PRESBYTERIAN CHURCH, Rev. Homer B. Silvernail.
SUNDAY, 10:30 Church Worship, 11:30 Church School, 7:30 Youth Fellowship.

COMMUNITY METHODIST CHURCH, Slingerlands - Rev. James R. Rhodes.

THURSDAY, November 22-10 a.m. Tri-Village Community Thanksgiving Service at Delmar Reformed Church.

FRIDAY, November 23-Youth Fellowship Hayride. Time to be announced.

SUNDAY, November 25-10:30 a.m. Church School.

10:30 a.m. Morning Worship
 5:30 p.m. Youth Fellowship

MONDAY, November 26-7:00 p.m. Board of Trustees.

8:00 p.m. Official Board

WEDNESDAY, November 28-4:00 p.m. Cherub Choir at Church

6:45 p.m. Junior Choir at Church

7:00 p.m. Pastor's Office Hours

7:45 p.m. Senior Choir

NORMANSVILLE COMMUNITY CHURCH, Leon F. Wardell.

SUNDAY-9:45 a.m. Sunday School

11:00 a.m. Morning Worship

7:30 p.m. Hymn Sing & Bible Study

MONDAY-11 a.m. Men's Bible Class

WEDNESDAY-7:30 p.m. Prayer Meeting

THURSDAY-7:45 p.m. Women's Bible Class.

FRIDAY-7:30 p.m. Young People's Prayer Meeting

THURSDAY-November 22- Thanksgiving Day Worship at 10 a.m.

DELMAR PRESBYTERIAN CHAPEL: Sunday Services are held in the Delmar Masonic Temple, Kenwood Ave., and Adams Street at 9:15 a.m.

SUNDAY SERVICE: 9:15 a.m.-Rev. Walter Thompson of Round Lake, guest.

9:15 Nursery & Sunday School

7:00 p.m. Youth Fellowship

DELMAR REFORMED CHURCH, Delaware Avenue, Delmar - Rev. Dr. LeRoy C. Brandt

SUNDAY SERVICES

9:45 Church School
 10:00 Arnold Bible Class

11:00 Nursery

11:00 Morning Worship

6:30 p.m. Youth Fellowship

THURSDAY, November 22-10:00 a.m. Community Thanksgiving Service with Rev. Douglas Smith preaching.

FRIDAY, November 23-3:30 p.m. Junior Choir Rehearsal.

SUNDAY, November 25-Dr. Brandt: "The Good Earth."

MONDAY, November 26-7:00 p.m. Cub Meeting.

CHRISTIAN SCIENCE SOCIETY, Delmar. Church Service-Sunday School, 11 a.m. Masonic Temple, Kenwood Av. at Adams.

The Church Column is Sponsored by:

TEBBUTT FUNERAL SERVICE

We are proud of our record of more than 100 years of dignified, dependable service. Our reputation was built on conscientious attention to the individual needs of every family we serve . . . at prices that all can afford. 420 Kenwood Avenue, Delmar. 9-2212. Also 176 State Street, Albany.

ST. THOMAS' CATHOLIC CHURCH, Delaware Avenue, Delmar - Msgr. Raymond F. Rooney.

MASSES: Monday through Friday, 6:45 and 7:30 a.m.

Saturday, 8 and 9 a.m.

SUNDAY MASSES: 7, 8, 9, 10, 11 (High), and 12.

ST. STEPHENS EPISCOPAL CHURCH, Elsmere Avenue, Delmar - Rev. Charles H. Kaulfuss.

SUNDAY SCHEDULE OF EVENTS

8:00 a.m. Holy Communion

8:30 a.m. Parish-Breakfast

9:45 a.m. The Family Eucharist

11:00 a.m. The Holy Eucharist (1st Sunday) Morning Prayer (2nd, 3rd & 4th Sundays)

7:00 p.m. Young People Religious Instruction

9:45 a.m. Grades 4 through adult

11:00 a.m. Kindergarten through Grade 3

FIRST METHODIST CHURCH, Kenwood Avenue, Delmar - Rev. Arthur P. White. Douglas C. Smith, Associate Minister.

THURSDAY-THANKSGIVING Service at the Reformed Church. Rev. Douglas C. Smith will preach. 10:00 a.m.

BETHLEHEM LUTHERAN CHURCH, Cor. Elm and Murray Avenues, Rev. Lawrence Heuchert, 440 Kenwood Avenue, Telephone 9-1615.

SUNDAY SCHOOL 9:45 a.m.
WORSHIP SERVICE 11:00 a.m.

FIRST SUNDAY OF EACH MONTH

Communion Preparation Service 10:45 a.m.
 Special Communion Service 11:00 a.m.

UNIONVILLE REFORMED CHURCH, Delaware Turnpike, Unionville, Rev. Louis H. Chisman.

10:00 a.m. Sunday School; 11:00 a.m. Worship Service.



Corner of
**LINCOLN &
 DELAWARE AVES**
FULLER'S PET SHOP
 Telephone 9-3309

BUSINESS & PROFESSIONAL
Telephone Exchange
 72 Delaware Avenue
 24-hour Service 9-3524

9-2667 *A. G. Sickinger* 9-2998
Tri-Village Trucking
 CHAIN SAW WORK
Field Stone
 Fireplace Logs Flag Stone

SITUATIONS WANTED

MATURE WOMAN to act as companion. 9-2434.

BABY SITTING at home, pre-school or school age, Glenmont, Route 32. 3-5273.

MERCHANDISE WANTED

WANTED: Hot air coal furnace complete with registers, hot and cold air conduits. PO 8-2143.

ANTIQUES
. . . an excellent idea for your
Christmas Gifts
 Copper, Brass, Silver, China
 and Glass Available
BETTY HOTALING
 24 KENWARE AVENUE, DELMAR
 3rd Street on Right off Delaware Ave.
 past Delmar Grade School
FOR YOUR CONVENIENCE CALL
 9-1825

For Your
INTERIOR DECORATING
 At Very Reasonable
WINTER PRICES
 call
9-2642 9-703
 We also do small repair jobs and
 Alterations

NEW SHIPMENT
PLASTIC WALL TILE 25c Sq. Ft.
BLACKER'S
MODERN FLOORS
 288 Central Ave. - Open Eves.
 Albany, N. Y.
 4-6105 - 4-6106

CHRISTMAS CARDS AT HOME
 Choose your cards leisurely - we will
 deliver to your home the finest albums
 for the whole family's approval
THE STUDIO SHOPPE
 CALL 8-8665

ANTIQUE & MODERN Furniture
RESTORED AND REFINISHED
KEN YEOMANS
 New Scotland - Box 77 - 9-4110

Now . . . you can have your
VACUUM CLEANER REPAIRED
 right here in the Tri-Village Area
Jess Turner
 Free Pick-up & Delivery 9-1210

This Could Be YOU!



A leaky tailpipe or muffler can fill your car with deadly carbon monoxide fumes . . . a serious situation with the windows closed!

Let us check your car TODAY!

Or call
5-9033

and let us give you a BARGAIN estimate on the job.

(Only Nationally advertised replacement parts used.)

**CRANE'S
SUNOCO SERVICE**

ROUTE 9-W

½ Mile South of Thruway Interchange
GLENMONT PHONE 5-9033

**REDMOND & BRAMLEY
OIL COMPANY, INC.**

Atlantic Fuel Oil

Heil Burners

DEPENDABLE 24-HOUR SERVICE
5-1433 5-1434

FOR A BETTER JOB WELL DONE
Call

R. K. MARTIN

For
EXPERT ROOFING, SIDING
AND CARPENTRY WORK
of which you'll be proud

Estimates Cheerfully Given and
at no Obligation

271 Kenwood Ave.
Delmar, N.Y.

Phone
9-4272



FAMILY GIFT CENTER

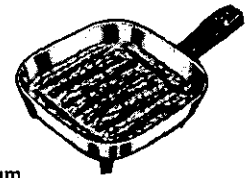


"SURFORM"

\$3.69

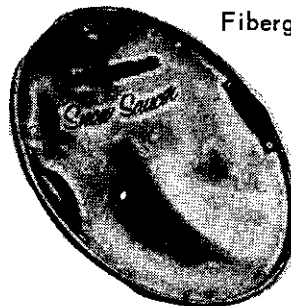
\$2.69

Stanley's NEW
Woodworking Tools



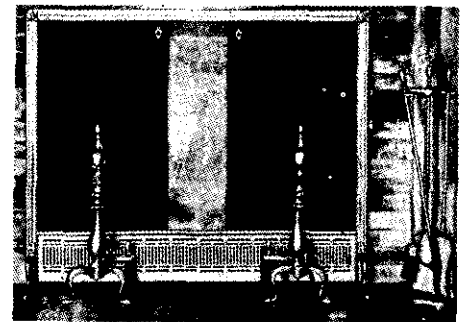
Sunbeam
**ELECTRIC
FRY PAN** \$19.95

Thermostatically controlled
frying is easier, more healthful.
"Dial your meal at the table."



Fiberglass \$5.95

Brass
Ensemble
\$59.50
Complete



HILCHIE'S TERMINAL HARDWARE, Inc

ELSMERE AT THE LIGHT

9-3941

Xmas Lay Away

MEAT IS YOUR BIGGEST EXPENSE

High quality MEAT at a fair price is your best value -
Poor quality Meats at any price result in wasted dollars plus wasted food

WE have only Prime & Choice Meats!

FAMOUS For Our Homemade CORNED BEEF

BRISKET - RUMP - EYE - TOP & BOTTOM ROUND

MC CARROLL'S SUPER MARKET

272 Second Avenue

Albany, New York

REAL ESTATE For Rent

FOR RENT-Available now! Flat, upper,
5 rooms, heated. 9-1440.

FOR RENT-\$60, Dec. 1, 2 bedrooms, elec.
range, refrigerator and garage. Call
evenings or weekends. 9-3940.

LARGE, 5-ROOM, attractive apartment,
heated, garage, \$85. 9-2092 after 6.

OFFICE SPACE-2 ROOMS, upstairs, 10
Hallwood Pl. Heated, \$55 per month.
Call Dan at 9-966 or Al at 9-968.

ROOMS FOR RENT-On bus line, con-
venient, pleasant. 9-3309.

ANIMALS AND PETS FOR SALE

BOXER MALE, 5 yrs., AKC reg., good
home more important than price of \$60.
2-8603.

Permit No. 10
PAID
Bulk Rate
U. S. POSTAGE

