

The Spotlight

VOL. III, NO. 14 • \$1.00 A YEAR

MARCH 13, 1958 • TEN CENTS

POSTAGE RATE HIKE THREATENS SPOTLIGHT LETTERS

Fluoridation?

An informal poll on the fluoridation issue will be conducted in the Water District on Saturday, March 22, to guide the Town Board in making its final decision in the matter. Voting will take place at the three fire houses from 9 a.m. to 8 p.m. All legal residents of the Water District, whether or not they own property, are eligible to vote.

The Spotlight:

Before you vote on fluoridation read this. Is any organization licensed or authorized to recommend the following? "Put commercial grade sodium fluoride in the town water."

Here are some other objections.

(1) The unconstitutionality of the mass treating of whole populations, savoring socialized medicine.

(2) The total disregard for the factor of individual susceptibility, which any reputable doctor deems most important, and which demands individual prescription and some knowledge of the patient's physical and even mental make-up.

(3) The differing condition of health of individuals, many of whom may have organic diseases or predispositions toward abnormal physical conditions which would prevent the proper elimination of fluorine from the body at even an average rate, which is never complete.

(4) The undetermined amount of natural fluorides consumed in food, as various foods contain various percentages of fluorine, in addition to any introduced into the water supply.

(5) Some may drink more water than is good for them. When the weather gets hot we may all overdo it.

(6) Such waste! More than 99.5 percent of money wastage as only a very small percentage of the treated water is used for

drinking, and a mere 10 percent of the population (children under 12 years) can possibly benefit. In Washington, D.C. where the residents have no vote, fluoridation was introduced into the city water supply. A newspaper headline stated that at a cost of \$104,792, it was figured only \$526 worth was used by children for drinking.

(7) The report of findings of the House Select Committee on Chemicals in Food February and March 1952, and which unanimously counseled caution and "go slow" in the introduction of fluorine water supplies pending the conclusion of long term experiments planned to show up any possible deleterious effects on the human system.

Safety of fluoridation

The Spotlight, February 27, 1958 printed a letter from Mr. Hedlund of the Bethlehem Community Association in which quite a bit was written about the mottled effect of some of the teeth produced when certain amounts of fluoride are consumed. There is no need to take up time to discuss this in detail but it is necessary to state that "mottled teeth" is considered by medical men to be an indication of a general condition of the whole system requiring further investigation. He states that, "The American Medical Association believes that these fears are groundless." Many individual doctors have made statements to the contrary.

Pure Water Association

To the Editor of the Spotlight:

In a letter to the Spotlight of February 20 opposing fluoridation, Mr. E.W. Littlefield flatly contradicted some of the statements I made in an earlier communication on this subject. Al-

(Please turn to Page 2)

NEW POSTAL BILL RAISES THIRD CLASS MAIL RATES 66%

While Mr. and Mrs. Public have been gnashing their teeth over the 25% raise in First Class Mail rates, just passed by Congress, there are hundreds of small weekly publications from coast-to-coast that are confronted by almost certain extinction by that part of the bill which hikes Third Class Mail by some 66%! Very few of these publications, dedicated to local community service, can cope with such an increase.

SUBSCRIBE TO THE SPOTLIGHT

\$1.00 1 Year

\$1.50 2 Years

\$2.00 3 Years

THE SPOTLIGHT
Delmar, New York

Please enter my subscription to the Spotlight for a period of

1 year 2 years 3 years
(Check ONE)

I enclose \$1 \$1.50 \$2
(Circle ONE)

Date

Name

Address

In this category is the Spotlight, which must either get enough subscriptions to obtain a Second Class Permit, or it must fall by the wayside along with many others who find themselves in the same unenviable position.

As an example of the difference in the two rates, we use this issue as an example: Under Third Class mailing privilege, it costs 1½¢ PER COPY; under Second Class, 1/8 of ONE CENT PER COPY.

Looking at it another way: 12 copies can be mailed Second Class for the cost of ONE by Third Class. Even with the hike in Second Class to ¾¢ per copy, the proportion stays about the same, BUT the 3rd Class has suddenly become prohibitive for all small publications.

The Spotlight must, then, move in the same direction as the others: It must again ask for subscriptions in QUANTITY, literally by the thousands, in order to continue to bring you, our readers, a complete, true reflection of our community.



TWO CHAMPIONS—Bill Long, Manager of Airway Motors in Rensselaer, has won every sales prize offered by the Chrysler Corporation over the past several years. Bill lives in Delmar. Also in the picture is the 1958 Chrysler Champion "300," a 400 horsepower giant of the highways.

LETTERS

though Mr. Paul Hedlund has presented your readers an excellent review of the case for fluoridation in your February 27 issue, an answer to the specific charges of Mr. Littlefield is needed. It may help to indicate who is telling the truth.

My critic cites the opinions of seven scientists whom he represents as "investigators of the highest calibre and reputation in the scientific community." Who are these people? Four of the seven are not even listed in the standard directory of scientists: AMERICAN MEN OF SCIENCE. (This is not a particularly exclusive directory; over a dozen citizens of our own community are listed in the two volumes of this directory.) One of the "scientists" was merely a graduate student at Cornell, a fact that is clearly stated in the paper which my critic quotes but obviously has not read. Another is an anti-fluoride fanatic whose arguments have just recently been examined and publicly rejected as worthless by the investigating committee of the American Medical Association. There is not one of the group with "a high reputation in the scientific community."

In addition, my critic quoted the results of three recent scientific reports which he offered as evidence against fluoridation. Let's get the facts straight! A paper by Feldman was quoted which states that one per cent of a large group of people tested exhibited allergic reactions to

fluoride pills. In Dental Digest for August of 1956, Dr. Feldman clearly states in respect to the initial cases of allergy he encountered: "At the time the cases were reported, it was concluded that these symptoms were not the result of the fluoride ingested, but a reaction to the binder used in the tablets." This conclusion clearly excludes these studies from having any bearing

PLYWOOD HANDY PANELS



PRICES

24" x 48" panels

Interior Grade

1/4"	\$1.20
3/8"	1.60
1/2"	2.00
3/4"	2.72

DELMAR LUMBER

FREE DELIVERY 9-968



"Don't worry about it . . . my Pop's insurance policy covers water damage. He bought it from

ROSE & KIERNAN

INSURANCE AND SURETY BONDS

163 DELAWARE AVENUE, ELSMERE, N. Y.

Opposite Delaware Plaza Shopping Center

Phone 9-4961



Oil burner service is where we shine!

Once you put your oil burner in our hands, you can forget all about your heating worries. We assume the responsibility for keeping it in good operating order.

Our routine and emergency service is available day and night. And we make prompt delivery of Atlantic's famous triple-refined heating oil. You get clean-burning, dependable, economical, automatic heat.

Please call or write us today and we'll be glad to explain our oil burner service in detail. Take this step now and you can face the coldest weather without a worry.



Call 5-1433
REDMOND & BRAMLEY
OIL COMPANY, Inc.

**Ask Your Doctor
About Our Pharmacy!**

Surgical Supplies - Wheel Chairs - Crutches
(For Sale or Rent)

THE CARROLL PHARMACY
PRESCRIPTION SPECIALISTS

4 Pharmacists

Arthur Starman
Albert D. Warner

PhG.
PhG.

William R. Warner
Joyce Nautel

B.S. Phar.
B.S. Phar.

372 Delaware Avenue, 4 Corners, Delmar - Phone 9-1769
FREE DELIVERY

LETTERS

on fluoridation of water supplies. I can find no subsequent evidence published by Dr. Feldman (or anyone else) to show that these reactions were due to anything more than the binder used in the manufacture of the pills.

A second paper is quoted by Mr. Littlefield as showing that "observations on 456 rats thus studied revealed damage to teeth and gums with considerable loss of teeth resulting from low levels of fluoride intake." What is the truth? When rats were maintained for their lifetime on low levels of fluoride equivalent to that recommended for our water supply, there were exactly three animals who showed loss of one tooth each in their old age. My critic offers these three aged rats, each of whom had lost one tooth, as rebuttal to contrary evidence obtained from intensive studies of hundreds of elderly people in the communities in this country where fluoride occurs naturally in the water supply. As for disease of the gums, no such report can be found in the study quoted. Mention is made of some abnormali-

ties in the structure of the jaw bone at high levels of fluoride intake, but there are no data to indicate that significant abnormalities were observed at low fluoride levels.

Finally, my critic quotes some recent studies on radioactive fluoride which might perhaps sound frightening to an uninformed layman. The fact is, that when stripped of any ominous connotations which the layman might incorrectly read into technical language, the findings in this report are absolutely harmless. They are in accord with what is known about the metabolism of fluoride and are not in any way indicative of any danger which might result from fluoridation of our water supply.

I should not close this letter without making it emphatically clear that I in no sense desire to accuse Mr. Littlefield of deliberately or maliciously stating falsehoods. What Mr. Littlefield and his "dentist friend" are doing is quoting propaganda put out by fanatics who are themselves guilty of originating these lies. Mr. Littlefield is exerting his democratic right to express

MUSIC GROUP TO MEET
MEMBERS OF THE Music Group of the Delmar Progress Club will participate in a session of square dancing at the regular monthly meeting at the Delmar Public Library on Monday, March 17, Mr. Ralph C. Hoag, administrative assistant in the Bethlehem Central School District and a square dance enthusiast, will instruct the group. Mrs. John A. Glick is serving as hostess for the social hour. Mrs. Glick will be assisted by Mrs. Archie H. Robertson and Mrs. John C. Hoar.

TWO DOGS-GONE!
Harry Lee of Delaware Avenue and Bernard Mullen of Rural Place, Delmar, have worn out a lot of shoelather recently looking for their dogs. The dogs are twin brothers, part cocker and part hound, brown, with clipped tails. If you have seen either or both dogs, please call one of the men.

his opinions publicly and to quote this material which he apparently believes; it is unfortunate that he does not recognize his responsibility to check up on the facts that he quotes.
Sincerely yours,
Robert S. Alexander, Ph. D.

Taste the Big Difference
THE BEST IN GOOD FOODS
DELSMERE
FOOD MARKET
449 Delaware Avenue
Opp. Delmar Grade School

Top Quality
MEATS
Always

THE BEST DRESSED
(Fresh Killed)

CHICKENS
IN TOWN!

Young - Tender - Delicious

ONLY 39¢ LB.

Roast 'em! Bake 'em!
Broil 'em! Fry 'em!
Fix 'em any way you like 'em

You'll Love 'Em!

Our own old-fashioned
Sugar Cured

CORNERED
BEEF

Best in Town!

(ASK YOUR NEIGHBOR!)

TOP QUALITY
BUTTER LB. 65¢

DEL MONTE
CATSUP Bot. 17¢

GIANT SIZE
TIDE 69¢

Sale Ends Saturday, March 15
Quantity Rights Reserved

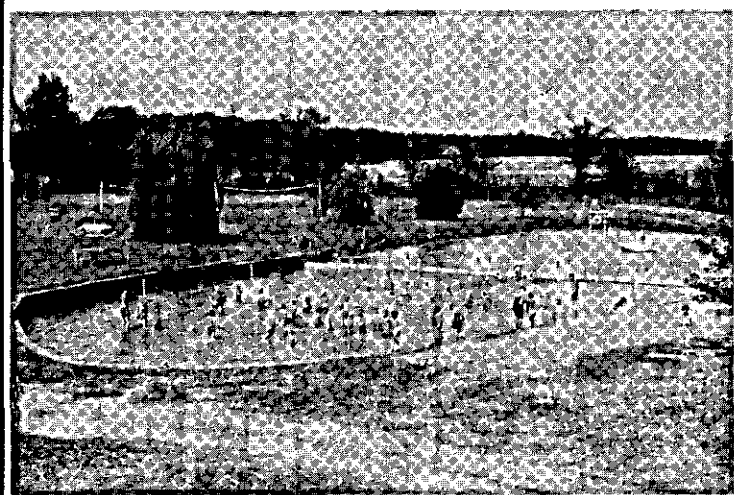
THE DUMONT
ELECTRONIC
EnginScope

checks the engine
in your car
as it runs!

-SAVE GAS!
-GET BETTER
PERFORMANCE!
-AVOID FUTURE
BREAKDOWNS!

TRI-VILLAGE
ESSO
SERVICENTERS
Call 9-4800

Cor. Delaware & Elm Avenues
AND
309 Delaware Avenue
BOTH in DELMAR



SUNNY ACRES DAY CAMP

-FEATURING-

Individual Supervision - Red Cross Swimming Instruction
Free Insurance - Milk - Refreshments & Craft Materials

BEGINNING JUNE 30 through AUGUST 22

For Boys AND Girls from 4 to 14 years

-BASEBALL CLINIC-

L. C. Smith Buses provide Transportation

REGISTRATIONS NOW THROUGH MAY 1 ONLY

9-2464

THE Easter Parade

starts in STEEFEL'S BOYS' DEPARTMENT



VERY MUCH IN DEMAND

The Very Ivy League suit in narrow striped flannel, three button, single breasted with welt seams and center back vent. Other suits in our spring collection include fine textured tweeds, rich slubbed silks and handsome blends; in solid color and subdued patterns.

Sizes 6 to 20

from \$24.95 to \$34.95

WE FEATURE HUSKIES

YES . . . YOU CAN CHARGE IT!!

Steeffel's

DELMAR STORE OPEN EVENINGS TILL 9

Here & There

REGULAR MEETING OF the Ladies' Auxiliary of Elsmere Fire Company will be held tonight, March 13, at 8 p. m. at the Fire Hall.

-0-

THE DELMAR DAY Unit of the Albany County Extension Service will meet at the Delmar Public Library tomorrow March 14 at 1:30 p. m. Mrs. Edward Broderick will speak on Sacred Music. The first lesson in braided rugs will be at 9 o'clock

-0-

REVIEWS OF CURRENT literary works will feature the March meeting of the Literature Group of the Delmar Progress Club at 10 a. m., Tuesday, March 18, at the Delmar Public Library. Mrs. Paul C. Lemon, program chairman, has announced that Mrs. Benjamin G. Berry will review a new allegorical novel, "The Roots of Heaven," by Romain Gary. "The White Buck," a legend of the Mexican border by Sarah Sanborne Weaver, will be reviewed by Mrs. Fred Moore. Mrs. Victor Cahalane will discuss "The Lunatic Fringe" by Gerald W. Johnson. At the coffee hour at 9:30 preceding the (Please turn to Page 6)

NOW . . . FEEL 21 AGAIN!
11 VITAMINS, 10 MINERALS



In one
easy-to-take
capsule
for LESS THAN
4c PER DAY!

NEW McKESSON'S

Bexel Formula #21

Multiple Vitamin-Mineral Capsules



100 CAPSULES

\$3.98

Less than 4c a day

PLAZA PHARMACY

At Delaware Plaza 9-4451

TREE REMOVAL

Pruned Fireplace Wood Rebuilt
Trucking
A. H. AIREY M. ESSEX
PHONES 5-8575 - 9-3702

Portrait Special!

MONTH OF MARCH ONLY!

THREE 8 x 10
and SIX WALLET SIZE
PRINTS

or

FOUR 5 x 7
and SIX WALLET SIZE
PRINTS

for

\$14.95

Schellhaas Camera Store

Delaware Plaza Phone 9-1472

We're harpin' on our
wonderful



St. Patrick's Day Cards

St. Patrick's Day - March 17

Edythe
Marguerite
GIFT SHOPS

Delaware Plaza, Delmar
573 N. Scotland Av., Albany

CALENDAR
OF EVENTS

Things to do! Places to go!
(All open to the general public)

March 15-Bethlehem Service Organization Card Party and Fashion Show (Afternoon) and Dance (Evening).

March 17-Albany Chamber Music Society: Koechet Quartet at Albany Institute of History and Art, 8:30 p.m.

March 18-Albany Symphony Orchestra and Capitol Hill Choral Society in Beethoven's 9th Symphony, Philip Livingston Junior High School, 8:30 p.m.

March 18-19-Open House at Bethlehem Central Junior High School, 7-10:30 p.m.

March 18-Children's Films: "More Life in Living," and "Men of Fire," Albany Institute of History and Art, 3:45 p.m.

March 19-Picture Book Hour for children 3-5, Delmar Public Library, 10:15 a.m.

March 19-Albany Civic Music Association: Pilar Lonengar, Soprano, Albany High School, 8:30.

March 20-Story Book Hour for

children 6-9, Delmar Public Library, 4 p.m.

March 20-21-22-Annual RPI Figure Skating Carnival, featuring RPI Club and guest artists in a full scale production.

Month of March-"Signs of Spring" at Spitz Planetarium, Schenectady Museum.

March 17-April 15-Florence Halenbeck: one-man art show, Delmar Public Library.

IF YOU ARE TO BE A

Bride

THIS SPRING

ORDER

WEDDING INVITATIONS

Announcements Stationery

NOW

and get

15% OFF

(Special for March only)

Pulman CO.

WE WILL TAKE

PASSPORT - CHAUFFEUR

AND

IDENTIFICATION PICTURES

No Appointment Necessary

Schellhaas

Camera Store

Delaware Plaza Phone 9-1472

DELAWARE

Plaza in Delmar

MODERN ONE-STOP SHOPPING

NATURELLEMENT!!

We're not French . . . but we like to please you, our customers!

For that reason, we've installed Suggestion Boxes on the steel columns under the promenade. We want you to use these boxes to tell us how to make the Plaza a BETTER place to shop!

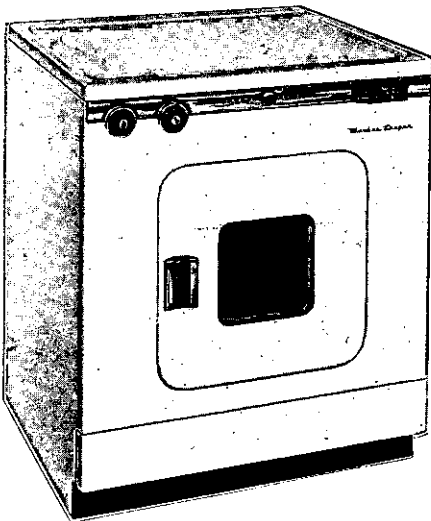
Parking space for 1,000 cars - 15¢ bus fare to and from Albany - Country-store friendliness - Complete city-store selection.

Again . . . A Murrey-Simon, Inc. Project



COMBINATION WASHER-DRYER

FOR A WONDERFULLY COMPACT, SUPERBLY EFFICIENT HOME LAUNDRY



WASH & DRY

In one completely automatic operation!

SAVE SPACE

Laundry where it's convenient!

AUTOMATIC WASHING

Big 8-lb. load with automatic water saver, automatic water heater, lint trap.

AUTOMATIC DRYING

Not a timer control but a completely guess-free automatic shut-off when clothes are dry . . . not before, not after! Multi-temp.

Dorinda Dinchpenny's

BARGAIN CORNER

Hi, Folks! Here's your Bargain Hunter with a real value: A GE 30" Automatic Range with Push-button controls, Deluxe styling!

Only \$258.00

With Trade

HURRY!

Look for space in your Kitchen, Bath, Linen Closet!

Come in for a demonstration of its many wonderful features!

BUDGET TERMS

OPEN 9 TO 9 WEEKDAYS

10 to 5:30 Saturday

Suburban

APPLIANCE

DELAWARE PLAZA

DELMAR 9-3557

8 Natural Wood Finishes and 27 Painted Colors to Choose From



Over 200 Kitchens Sold & Installed in 1957 - Call 2-5411

THE NATIONAL COMMERCIAL BANK AND TRUST COMPANY

COMPLETE BANKING SERVICES

Checking Accounts	Home Improvement Loans
Savings Accounts	Mortgage Loans
Christmas Fund Accounts	Personal Loans
Vacation Fund Accounts	Business Loans
Banking-by-Mail	Night Depository

*Safe Deposit Boxes

COMPLETE TRUST SERVICES

*DELMAR BRANCH 9-4714 ELSMERE BRANCH 9-4132

Ample Parking Space

Friday Evening Banking Hours 6-8 P.M.
(At Delmar Branch Only)

Member Federal Deposit Insurance Corporation

TV WASHERS DRYERS DISHWASHERS

Factory Engineered Replacement Parts

E. F. MUZZEY, Jr.

SERVICE IS OUR BUSINESS

Channel 10 Antennas Installed for As Low As \$15.95

Call 9-3419

24-Hour Service

Office: Spore Road, Delmar R. D.

Here & There

meeting, Mrs. Charles McAlister, chairman of hospitality, will be assisted by Mrs. A. W. Pense.

-0-

RED CROSS NURSE'S Aides are urgently needed at Veterans Hospital, St. Peter's and Child's Hospital, Mrs. Frank A. McNamee, Jr., chairman of the program announced.

Day and evening classes, taught by registered nurses to train volunteers, will begin March 17 at the Chapter House, 3 Englewood Place. The course will be for 60 hours, including 30 hours in the classroom at the Chapter House and 30 hours on hospital floors under supervision.

Women between the ages of 18 and 55, in good health and able to give approximately a half day or one evening a week can qualify. Duties of the Nurse's Aide are to relieve the graduate nurse of many nursing procedures, leaving her free for those services only she can perform.

-0-

THE TRI-VILLAGE NURSERY School will hold a general meeting for parents on Monday, March 17, at 8 p.m. at the school on the corner of 9-W and the Feura Bush Road.

-0-

AN EXHIBIT OF curios and costumes of many lands and a buffet supper will take place at the South Bethlehem Methodist

Imported SINGING Canaries!
PARROTS! PARROTS!
FULLER'S PET SHOP
TELEPHONE 9-3309
Cor. Lincoln & Dela. Aves.

TREAT YOUR MAN TO Laundry-smart Shirts

He'll
be
tickled!



In A Semi-Finish Bundle **Ea. 16¢**
For Pick up and Delivery
Call

HISTED LAUNDRY
DELMAR CLEANERS
226-228 Delaware Avenue
Delmar 9-832

Call us today for information about



• **PREMIUM GRADE**
Heating Oil
Premium Service
—at no extra cost

WILLIAM McEWAN
Coal & Oil Co.

Since 1863

4-1211 4-1211
26 Clinton Ave., Albany, N.Y.

New DANCE CLASSES *Now Forming*

FOR

*BEGINNERS

*INTERMEDIATES

*ADULTS

-0-

Classes forming for Ballet
and Modern Dance

-0-

Call

9-4696

VALERIA DANCE STUDIO
401 Kenwood Avenue

Here & There

Church, on Friday, March 21. The cafeteria style supper will be served to the public by the ladies of the Woman's Society of Christian Service, 5 to 7:30 p.m. Italian spaghetti, shrimp chow mein, and other national dishes will be featured.

-0-

THE SLINGERLANDS PRE-School PTA will meet in the School library on Wednesday,

March 19, at 8:15 p.m. A discussion on "Sibling Rivalry" will be led by Dr. J.H. Yacoubian, psychiatrist with the Albany Child Guidance Clinic.

-0-

A FASHION SHOW and Game Party will be held on Saturday, March 22, at the Voorheesville Central High School, at 8 p.m., under the auspices of The Evening Guild of the New Scotland Presbyterian Church.

Mrs. Joseph Gage, General

Chairman, has announced plans for the show, which includes fashions from Muhlfelder's with professional models; Teen and children's fashions from Whitney's, with local models; Stage decoration arranged and designed by Inga Barth, Florist; and as an extra item of interest, a Stereophonic demonstration by Fort Orange Radio Sound Department.

Heading committees are: Entertainment, Mrs. Howard Coughtry, assisted by the Misses Coral

Rauch, Kathy Gunther, Janet Ozard, Master William Connell and David Gaul; Card Table Chairman, Mrs. Gordon Pinney; Refreshments, Mrs. William Ozard, Mrs. Samuel Youmans, Mrs. William Connell; Candy Booth, Miss Marguerite Joslin and Mrs. Francis Person; Bake Sale under supervision of the Ladies Aid. Mrs. Blanche Halstead, Chairman; Publicity and Door Prizes, Mrs. Paul Kling, (Please turn the Page)

BILL LANG OFFERS . . . AFTER STORM WHOLESALE PUBLIC ACTION

	Was	NOW		Was	NOW
1957 CHRYSLER NEW YORKER HARDTOP, ALMOST NEW	\$5095	\$3695	1954 NASH RAMBLER SUBURBAN	\$1195	\$895
1957 CHRYSLER NEW YORKER SEDAN, EXECUTIVE CAR	\$5195	\$3695	1954 CADILLAC COUPE DE VILLE	\$2195	\$1995
1957 CHRYSLER SARATOGA HARDTOP, EXECUTIVE CAR	\$4550	\$3395	1954 DE SOTO FIREDOME 4-DOOR SEDAN	\$1195	\$995
1957 PLYMOUTH BELVEDERE V-8 SEDAN	\$3350	\$2395	1953 DODGE CORONET 2-DOOR SEDAN	\$795	\$495
1957 DE SOTO ADVENTURER HARDTOP	\$5100	\$3295	1953 CHRYSLER WINDSOR 4-DOOR SEDAN	\$795	\$595
1956 CHRYSLER NEW YORKER HARDTOP	\$2695	\$2295	1953 CHRYSLER NEW YORKER 4-DOOR SEDAN	\$895	\$695
1956 CHRYSLER WINDSOR 4-DOOR SEDAN	\$2195	\$1995	1953 CHRYSLER 2-DOOR SEDAN	\$695	\$495
1956 PLYMOUTH V-8 2-DOOR CLUB SEDAN	\$1595	\$1395	1953 BUICK SUPER SEDAN	\$795	\$495
1955 CHRYSLER WINDSOR 4-DOOR SEDAN	\$1695	\$1395	1953 PLYMOUTH SEDAN	\$695	\$495
1955 CHRYSLER NEW YORKER 4-DOOR SEDAN	\$1995	\$1595	1952 PLYMOUTH SUBURBAN	\$595	\$395
1955 BUICK CENTURY HARDTOP	\$1795	\$1495	1952 CHEVROLET HARDTOP	\$695	\$495
1955 MERCURY STATION WAGON	\$1795	\$1695	1952 CHEVROLET 4-DOOR SEDAN	\$595	\$395
1955 PLYMOUTH V-8 CONVERTIBLE	\$1495	\$1195	1952 PLYMOUTH CLUB SEDAN	\$495	\$395
1955 IMPERIAL SEDAN	\$2195	\$1895	1951 CHEVROLET SUBURBAN	\$595	\$395

AIRWAY MOTORS, Inc.

Chrysler, Plymouth, Imperial Dealer

4-2183

BROADWAY at 4th, RENSSELAER

Open Evenings 'til 9

FOWLER'S LIQUOR STORE

SEE GEORGE OR HARRY
FOR BETTER SPIRITS

We Deliver

Theatre Building
333 Delaware Ave 9-2613

WILLIAM G. SCHWING
Tax Consultant
FEDERAL and STATE
RETURNS PREPARED
1709 Western Ave., Albany 3
PHONE 2-5015

Joseph Genovesi & Son

SNOW PLOWING and TOWING

9-3075

9-4654

Ralph's Sinclair Service Station

—Under New Management—

7 a.m. to 9 p.m. DAILY 9 a.m. to 7 p.m. SUNDAYS

ROAD SERVICE
MOTOR TUNE-UP — GENERAL REPAIRS

1360 New Scotland Road, Slingerlands
PHONE 9-885

ALL WORK & PARTS GUARANTEED!
Your Patronage is Appreciated!

OPEN your Savings Account NOW
and get your PASSPORT into the Future!

3 ¹/₄ %

All Accounts INSURED up to \$10,000.00

SEND FOR FREE SAVE-BY-MAIL INFORMATION

VOORHEESVILLE
Savings and LOAN ASSOCIATION
Voorheesville New York Phone RO 5-2772

Here & There

Mrs. Frank Warner and Mrs. Herbert E. Jones. Commentator for the show will be Mrs. Richard Long.

—0—

ON MONDAY EVENING, March 17, the Nathaniel Adams Blanchard Post, #1040, American Legion, Delmar, will be privileged to present a talk by Mr. Russell Carter of the Schenectady Museum Association on "Moonwatch-IGY." The program will start at 8:30 p.m.

—0—

THE 11th ANNUAL communion breakfast of Bethlehem Lodge No. 1096, F. & A.M. will be held in the Delmar Reformed Church on March 23 at 7 a.m. General chairman is Randall W. Vaughn. Reservations may be made by calling 9-2139. The last date for making reservations is March 17. All Master Masons of the Delmar area are invited to attend regardless of membership in Bethlehem Lodge.

—0—

THE MASTER MASON Degree will be conferred on a full class of candidates at the next regular meeting of Bethlehem Lodge, No. 1096, F. & A.M. on Tuesday, March 18, at 7:30 p.m., in the Delmar Masonic Temple. Past Masters of Bethlehem Lodge will occupy all the chairs of office for conferral of the degree.

—0—

THE PROGRAM ON Cancer sponsored by the Bethlehem Central Teachers' Association will feature a panel of doctors moderated by Roger Drew. Included in the group will be: Dr. Sam Powers, Dr. A.G. Gabriels, Dr. Theodore Beecher, and Dr. Irving Van Woert, Jr. Various areas of cancer treatment and research will be discussed and the audience will participate through written questioning.

A film, produced by the American Cancer Society and loaned through the Friendly Red Door of Albany, will be shown.

This meeting provides all women of the Tri-Village area with an opportunity to protect their health through education. Tuesday, March 18, 8 p.m., at the Delmar Theater.

—0—

A CARD PARTY given by the Sophomore class will be held at

BUSINESS & PROFESSIONAL Telephone Exchange

72 Delaware Avenue

24-hour Service

9-3524

**SEPTIC TANK
AND DRAINAGE SERVICE
SEWERS AND DRAINS
CLEANED ELECTRICALLY
TORK & PAFUNDA**
Voorheesville
RO 5-7386 RO 5-2784

ALCOHOLICS ANONYMOUS
P.O. Box 102, Delmar, N.Y.

PLYWOOD

Phillippine
MAHOGANY PLYWOOD
4' x 8' x 1/4"

"V" Grooved 22¢ per sq. ft.
Plain 17¢ per sq. ft.

PRE-FINISHED PLYWOOD (Weldwood)

V Grooved	4' x 8' x 1/4"
SAMARA	40¢ sq. ft.
NAKORA	54¢ sq. ft.
KNOTTY PINE	54¢ sq. ft.
BIRCH	58¢ sq. ft.
MAHOGANY	60¢ sq. ft.
KORINA	65¢ sq. ft.
OAK	66¢ sq. ft.
CHERRY	66¢ sq. ft.
WALNUT	66¢ sq. ft.

MAHOGANY AND BIRCH FLUSH DOORS

MARINE & EXTERIOR PLYWOOD (Free Boat Plans)

Mahogany & Hardwood MOULDINGS

The Latest in
Hardware & Space Gadgets
Adjustable shelving — pegboard
hooks — Modern & Antique
Hinges and Pulls — Sliding
Door Tracks — Closet Trolleys
Birch Legs — Closet Shelf &
Rod Brackets.

PLYWOOD — Small Pieces

BETHLEHEM LUMBER Co.
GLENMONT
At the intersection of Route 32
and 144
PHONE 62-2335



has
MONEY
for you

UPSTATE LOAN CO., INC.
2 Delaware Plaza, Elsmere
Licensed pursuant to Article IX
of the Banking Law
Tel. 9-911 - Loans \$25 to \$500

Keep your
Irish eyes
smilin'--

Keep your
hearts young
and gay --

Serve
McCarroll's
CORNER BEEF
this

St. Patrick's Day

**MC CARROLL'S
SUPER MARKET**

272 Second Av., Albany

Here & There

Bethlehem Central High School, Delmar, on March 14 from 8 until 11 p.m. Lloyd Johnson a member of the Boys' Homemaking Class will be in charge of refreshments. Decorations will be in a St. Patrick's Day mood and the floral centerpiece will be awarded as a door prize.

-0-

THE DELTA GAMMA Alumnae Association of Albany will observe the annual celebration of Founders' Day with a luncheon at the Edison Club, on March 15. They will be the guests of the Schenectady Delta Gamma Alumnae Chapter.

Founders' Day 1958 commemorates the 85th anniversary of the founding of Delta Gamma at Lewis School, Oxford, Mississippi, a small girl's school later absorbed by the University of Mississippi. Today, Delta Gamma's 85 collegiate chapters are located on campuses throughout the United States and Canada, and alumnae organizations are active around the world.

The national philanthropic activity of the Fraternity is principally associated with aid to the blind and sight saving. The local projects range from the \$200,000.00 Nursery School for Visually Handicapped Children in Los Angeles to such individual activities as collecting old glasses frames for needy blind or reading to blind students. The Schenectady group is now working with sight testing of pre-school children.

The program for Founders' Day this year is being presented by the Albany Chapter of which Mrs. David Utz is president. On the committee with Mrs. Utz are Mrs. Donald Gulling, Mrs. F.E. Almstead and Mrs. Raymond Wilson.

HELP WANTED!

Are YOU interested in Clothes? Would YOU like to sell? Can you work 5 days, 2 nights per week? If so, please call 9-4018.

TOWN AND TWEED
DELAWARE PLAZA - ELSMERE, NEW YORK

DELMAR THEATER

Fri., Sat., Sun - Mar. 14, 15, 16
Bing Crosby Ingrid Bergman
"The Bells of St. Mary's"

PLUS

George Montgomery in
"BLACK PATCH"
Cartoons - Sat. Mat. Serial

-0-

Important Announcement!!
TUESDAY, MARCH 18 - Cancer
Film for Women Only at 8 p.m.

Call 9-3823 24-Hour Service

Jeep Snow Plowing

Seasonal Contracts Offered

J. W. MICHAELS

FAST

EFFICIENT

Plan Your Garden Now!!

WRITE OR CALL FOR OUR 1958 GARDEN AND SEED CATALOG

All the new & finest varieties of flower & vegetable seeds

-0-

Start **TUBEROUS BEGONIAS** now!
We have top size, beautiful bulbs

35¢ each

3 for \$1

12 for \$3.75

-0-

FERTILIZERS - PEAT MOSS - TOOLS

A complete line of Garden Supplies!

PRICE'S SEED STORE, Inc.

The most complete seed store in the Capitol District
Established 1831
90 Hudson Avenue, Albany

WE DELIVER
Phone 4-0815

SAVE TIME AND MONEY!

BANK BY MAIL

WHERE YOUR SAVINGS EARN MORE!

Albany Savings Bank

The Oldest and Largest Savings Bank in Albany

NOW!
3 1/4%
per annum*

Dividends compounded and paid quarterly
... figured from date of deposit ... your
best possible savings combination!

It's free! Write today for new Bank-by-Mail
folder with all necessary information, forms
and postage-paid envelopes.

* anticipated dividend.

Member Federal Deposit Insurance Corporation

ALBANY SAVINGS BANK

Department No. 36

Albany, New York

Please send, without obligation, your free bank-by-mail folder.

NAME.....

STREET.....

CITY.....

STATE.....

Tebbutt's CHURCH CALENDAR of EVENTS

NEW SALEM REFORMED CHURCH, New Scotland Road; P.O., R. D. 1, Voorheesville - Rev. John H. Austin, Pastor. Tel. RO 5-2698.
SUNDAY-10 a.m. Sunday School; 11 a.m. Morning Worship.

CLARKSVILLE FIRST METHODIST CHURCH - Rev. Fred R. Brown, Pastor.
SUNDAY: 9:45 Church School; 11 Morning Worship.

CLARKSVILLE GOSPEL FELLOWSHIP meets at the home of Rev. Wendell Hiltzley, Olive St. POlar 8-2631.

SUNDAY-7:30 p.m. Gospel Meeting.
TUESDAY-7 p.m. Jolly Teen Time
THURSDAY - 7:30 p.m. Bible Prayer Hour.

UNIONVILLE REFORMED Church Delaware Turnpike, Unionville - Rev. Louis H. Chisman.
SUNDAY: 10:00 a.m. Sunday School; 11:00 a.m. Worship Service

ST. STEPHENS EPISCOPAL CHURCH, Elsmere Ave., Delmar - Rev. Charles H. Kaulfuss.

SUNDAY: 8 a.m. Holy Eucharist; 9:30 a.m. The Family Eucharist (All classes with the exception Kindergarten, will attend Church Service and then proceed to their class in Church School after the first part of the Service; 11 a.m. First Sunday-Holy Communion; other Sundays: Morning Prayer. (Nursery).

NEW SCOTLAND PRESBYTERIAN CHURCH, Rev. Homer B. Silvernail.

SUNDAY, 10:30 a.m. Church Worship; 11:30 Church School; 7:30 p.m. Youth Fellowship.

The Calendar of Church Events is sponsored by:

TEBBUTT FUNERAL SERVICE

We are proud of our record of more than 100 years of dignified, dependable service. Our reputation was built on conscientious attention to the individual needs of every family we serve . . . at prices that all can afford.

420 Kenwood Avenue, Delmar 9-2212

176 State Street, Albany 3-2179

12 Colvin Avenue, Albany 89-0116

11 Elm Street, Nassau Nassau 8-1231

BETHLEHEM LUTHERAN Church Cor. Elm and Murray Aves - Rev. Lawrence Heuchert, 440 Kenwood Avenue, Telephone 9-1615.

SUNDAY, 9:45 a.m. Sunday School 11 a.m. Worship Service
TUESDAY: 10:30 a.m. Bible Study (Adults)
WEDNESDAY, March 19-7:30 p.m. Special mid-week Lenten Service: Topic: "Jesus Before the High Priest."
NURSERY is open during Sunday Services and Wednesday evenings during Lenten Services.

SATURDAY: 10 a.m. Weekly Confirmation Class.

DELMAR REFORMED CHURCH, Delaware Avenue - Rev. Dr. LeRoy C. Brandt.

THURSDAY, March 13-2 p.m. Missionary Society meeting; 7:30 p.m. Senior Choir rehearsal.

FRIDAY, March 14 - 3:30 p.m. Junior Choir rehearsal.

SUNDAY, March 16 - 9:45 a.m. Church School; 10 a.m. Arnold Adult Bible Class; 11 a.m. Nursery; 11 a.m. Worship Service, Dr. Brandt will preach on "From Olivet to Calvary - the Emotions;" 4:45 p.m. New members class; 5:45 p.m. Youth Choir; 6:30 p.m. Youth Fellowship.

TUESDAY, March 18 - 3:30 p.m. Brownies; 8 p.m. L.E.N. Service Circle.

WEDNESDAY, March 18 - 8 p.m. Lenten Service: Dr. Albert H. VanDyke of the First Reformed Church of Hudson, N.Y., will be guest preacher.

CLARKSVILLE REFORMED CHURCH on Delaware Turnpike, Clarks-ville, Rev. Charles W. Smith, Pastor.

SUNDAY Morning Worship: 9:45

ONESQUETHAW Reformed Church, between Route 32 and Clarks-ville. Rev. Arthur Homberg, Pastor.

SUNDAY: 11 a.m. Church School; 12 Noon-Worship Service.

DELMAR PRESBYTERIAN CHURCH, Rev. George H. Phelps. Sunday Services are held in the Delmar Masonic Temple, Kenwood Avenue and Adams Street

SUNDAY: 9:15 a.m. Worship and Church School through Grade 6. Nursery care for children under 3. 5 p.m. Junior and Senior High Youth Fellowship with supper each week. Also Church School classes, worship and fellowship program. 7:30 p.m. Adult Bible Study course at 25 Roweland Avenue. Teacher: Dr. Theodore G. Brown.

COMMUNITY METHODIST Church, Slingerlands, Rev. James R. Rhodes.

SATURDAY, March 15 - 2 p.m. Fashion Show in Fellowship Hall. All women are invited to attend. There will also be a silver tea.

SUNDAY, March 16 - 10:30 a.m. Morning Worship: Sermon: "If You Love Him, Why Not Serve Him?" 10:30 a.m. Pre-nursery through Kindergarten meet in Fire Hall. Grades 1-6 worship in Sanctuary through children's hymn, then go to classes.

12 noon, Dinner for Canvassers; 4 p.m. Preparatory Membership class; 4:30 p.m. Junior High Youth Fellowship; 7 p.m. Senior High Youth Fellowship.

MONDAY, March 12-7 p.m. Commission on Education; 7:45 p.m. Commission on Finance.

TUESDAY, March 18-6 p.m. Men's Club.

WEDNESDAY, March 19 - 4 p.m. Cherub Choir; 6:45 p.m. Junior Choir; 7 p.m. MYF Worship Committee; 7:30 p.m. Pastor's Evening Office Hours; 7:45 p.m. Senior Choir.

THURSDAY, March 20-7:30 p.m. Boy Scouts & Explorers.

FIRST METHODIST CHURCH, Kenwood Avenue, Delmar - Rev. Arthur P. White. Douglas C. Smith, Associate Minister.

SUNDAY, March 16-9:30 and 11 a.m. Church School and Divine Worship; Bishop Raymond L. Archer, formerly of Malaya, will preach at both services.

MONDAY, March 17 - 6:30 p.m. Men's Association Dinner.

THURSDAY, March 20 - 10 a.m. WSCS Lenten meeting: "The Meaning of the Cross;" leader: Rev. Arthur P. White.

FRIDAY, March 21-7 p.m. Mr. & Mrs. Club meeting: the movie: "The Miracle of Love," will be shown.

CHRISTIAN SCIENCE SOCIETY, Delmar.

SUNDAY-11:00 a.m. Church Service & Sunday School. Masonic Temple, Kenwood Ave.

TESTIMONIAL MEETINGS: Every Thursday at 8 p.m.

ST. THOMAS CATHOLIC CHURCH Delaware Avenue, Delmar - Msgr. Raymond F. Rooney.

SUNDAY MASSES (In the Church) 7, 8, 9, 10 & 11 (High Mass). (In the Auditorium) 9, 10 & 12 noon.

WEEKDAY MASSES: 6:45 & 7:30. **SATURDAY MASSES**: 8 & 9.

THERE is Nursery care each Sunday for pre-school children at the school during the 10 & 11 o'clock Masses.

SO. BETHLEHEM METHODIST CHURCH, So. Bethlehem. L. Wayne Dunlap, Minister.

THURSDAY, March 13-1:10 p.m. Weekday Class of Religion; 2:40 p.m. Junior Choir.

FRIDAY, March 14-8 p.m. Choir rehearsal.

SUNDAY, March 16 - 9:45 a.m. Church School; 11 a.m. Morning Worship, "The Ground of Our Hope;" 4:30 p.m. Junior Choir rehearsal.

MONDAY, March 17-7 p.m. Boy Scouts.

WEDNESDAY, March 19 - 4 p.m. Confirmation Class at Parsonage.

GLENMONT COMMUNITY Church (Reformed) will unite in Worship Services temporarily with the Reformed Church of Bethlehem, 11 a.m. each Sunday.

FIRST METHODIST CHURCH OF VOORHEESVILLE, Rev. Walter Taylor, Pastor.

SUNDAY SCHOOL- 9:45 a.m. **WORSHIP SERVICE**- 11 a.m.

ALBANY BIBLE INSTITUTE, 281 State Street, Albany.

SUNDAY: Service at 4 p.m. Guest speaker.

THURSDAY: Popular Bible Class at 7 p.m. except holidays.

JERUSALEM REFORMED CHURCH, Feura Bush - Rev. Arthur P. Homberg, Pastor.

SUNDAY-9:30 a.m. Sunday School; 10:30 a.m. Worship Service; 7 p.m. Youth Fellowship.

MONTHLY-8 p.m. Ladies' Guild, 1st Monday; 2 p.m. Ladies' Aid Society, last Thursday; 8 p.m. Sunday School Teachers & Officers meeting, last Tuesday; 8 p.m. Consistory Meeting, last Monday.

Ralph S. Butler & Sons
Incorporated

"All Forms of Insurance"

252 Dela. Ave., Delmar 9-4581

Schnurr & Wood

Feeds - Seeds - Fertilizers
Hardware & Garden Supplies

Carmote Paints

WATER SOFTENING SALT
WILD BIRD SEED
SUNFLOWER SEED

We Deliver Delmar 9-1878

TELEPHONE
76-8-2143

SPOTLIGHT CLASSIFIEDS

TELEPHONE
PO-8-2143

CLASSIFIED

BUSINESS SERVICE

BABY SITTING

EXPERIENCED baby sitter wants extra work any evening except Thursday. 75¢ per hour. Call PO 8-2143.

BULLDOZING, GRADING

CELLARS, ponds, grading, etc. Fill, shale and top soil. Jim Salisbury. Call E. Berne 81-J3.

FLOORS

FORMICA and linoleum tops; in-laid linoleum floors. Sales and installation. 9-3190.

IRONING & WASHING

IRONING to do in my own home. References furnished. 9-4736.

PAINTING & CARPENTRY

FRANK SALISBURY, General Contractor. Interior and exterior painting, carpentry. Bailey Ave., Delmar. 9-1355.

PAINTING and/or PAPERING

ARTHUR J. Armstrong, general painting and paperhanging. Call UN 1-8720.

PARTY DESSERTS

ULTIMATE in Party Desserts: Schrafft's Ice Cream. Plaza Phar.

SEWING

EXPERT alterations & drapes, done your home or mine. 8-4667.

SEWING machine repair. 9-4898.

TRUCKING, LIGHT

WE MOVE: Pianos, Freezers, Refrigerators, Stoves, Furniture, etc. Ken Lake, 9-4424 or 9-3297.

TRUCK FOR RENT

TRUCK for rent: 1½ ton rack with dump, \$1.50 per hr. plus 5¢ per mile. 9-3190

MERCHANDISE FOR SALE

SIMMONS sofa bed; 6-piece bedroom set; chairs; round coffee table; end tables; 3-drawer commode stand; lamps; 12-piece setting of dinner china, like new. Call 9-3214.

SOFA for sale. Call 9-2578.
FRIGIDAIRE, 9', \$65; Electric range, 20", \$20. 9-3787.

40" Gibson electric range, good condition, \$50. 9-2831 after 6 or weekends.

AMATEUR radio station, including Hallicrafter SX-71 communications receiver, transmitter, spare parts, multimeter and complete correspondence course in radio electronics. Good chance to start a boy in rewarding hobby. **THE WORKS**, \$150. 9-2888.

1½-ton GE air conditioner, used 6 times, perfect condition, cost \$450, sell for \$275; Metronome, \$10; Automatic toaster, \$5. Call 9-2210.

1957 Albany City Directory. Call 3-2626.

MOVIE Projector, 16 mm., complete with speaker, excellent condition, recently overhauled, \$100. 3-3183.

DINING room suite, cherry mahog. buffet, table, 6 chairs and armchair, Victrola; 2 other armchairs. 89-4050.

SUNBEAM waffle iron, \$10; 2 (1 new, 1 used) card display units, both for \$15; large plywood storage cabinet, \$15. 2-3301.

JARS-7 cases/qts; 2 cases/pts; 7 boxes rings, \$2.50; coffee urn, sugar, creamer, \$3.50. 9-2693.

TV, 1957 Hotpoint console, 21", mahog., prac. new, reasonable. 9-3233.

THAYER baby carriage, good, \$15. RO 7-2633.

GE Filter Flo auto. washer, 12-lb. capacity, reasonable. 2-1040.

GREEN Bigelow twist wool rug & pad, 9x12. 9-1404.

UPRIGHT vacuum, \$8; Carpet sweeper, \$2.50; ship model, reasonable. 9-4414.

GOLF clubs, irons, Nos. 2 thru 9, \$20. 9-2728 after 6.

WEBCOR Wire Recorder with mike, double earphones, 2-way foot control, \$55. 9-3522.

WESTERN-type saddle, 12" seat, black & white, excellent condition, \$75. PO 8-2272.

BLACKSTONE fully automatic washer, 1958 model, cost \$369, sell for \$225. Reason: We are moving. Call after 6 or all day Sunday: PO 8-2616.

MAGIC Chef gas range, excellent, \$35. 9-2447.

NEW GE Coffee Maker, used twice, 62-2755 after 5 p.m.

EASY Spindryer washer, reasonable. 8-0350.

KIT. table, \$6; waffle iron, \$3; Elec. iron, \$3. 9-2693.

MERCHANDISE FOR SALE

7.35 Mannlicher Carbine, sporterized, gd. cond. 9-1096.

KITCHENETTE set, 5 pc., \$15. 8-4238.

ANTIQUE pine fireplace bellows, \$20; new truck chains, 6:00x16-6:00x17-6:50x16, \$10; Warehouse hand truck, \$10; International truck, flat box or 1½ ton rack, \$750. 9-2667.

CAMERA: Bosley B II with case, flash, filters, \$20; Weston II exposure meter, \$12; 9-4754 after 6 p.m.

R. C. ALLEN adding machine & cash register, 1 yr. old. 9-832.

THREE prs. floor-length drapes, chartreuse with print, 2 mos. old, \$12; twin bed coil spring, \$5; Sohmer clarinet, perfect, make offer. 9-2736.

ANTIQUE drop leaf table with 4 extra leaves and pads, 5 mahog. chairs, mahog. wine cellar, beveled glass china closet, low rocking chair, small antique dresser, \$100 complete. 3-1150 between 12 & 1 p.m.

MERCHANDISE WANTED

8' or 10' Aluminum Pram. 9-3188.

PETS FOR SALE

TWO rabbits and hutches, \$6. RO 7-2729.

BEAGLE, 3 mos., gd. with children. 9-1721.

WIRE Fox Terrier, pedigreed, 3 years old, spayed female, house broken. 9-1692.

LOTS FOR SALE

LOT for sale. Glenmont, East Wiggand Drive. 9-3304.

-CLASSIFIED ADVERTISING-

Percentage Ads

GENERAL MERCHANDISE are only ads taken on percentage - NO established businesses, PLEASE! 10% on sales \$1 to \$101 - 5% \$102 to \$501 - 2% \$502 up. The MINUTE you sell an article, CALL US. These ads run for THREE weeks. Do NOT advertise elsewhere during that time. (NO used clothing accepted on % basis!)

-Paid Classifieds-

All other classifications are accepted at 10¢ per word, \$1 minimum, payable in ADVANCE.

-Closing Deadline-

Thursday, ONE WEEK prior to publication.

-PAYMENTS-

Mail: Spotlight, Delmar, N.Y. Leave at: PLAZA PHARMACY

ROOMS FOR RENT

ROOM for rent, on bus line, large. 9-3309.

REAL ESTATE WANTED

REAL ESTATE sells faster with concentrated selling! LISTING YOUR HOUSE?

Contact
KNAUF AGENCY
Mrs. Moylan 9-4848

Real Estate - Wanted to Rent

WIDOW would like small furnished apartment in Tri-Village Area. Call 9-3463.

HELP WANTED FEMALE

WOMAN to assist in Spring cleaning. 9-2727.

RELIABLE woman to care for 2 small children for working mother. Occasional weekends. Call 9-2156 evenings.

HELP WANTED Male-Female

PLAZA Pharmacy part time. Experience not necessary.

AUTOMOTIVE FOR SALE

1957 ½-ton Chevy pick-up truck, fully equipped, only 9000 miles Sacrifice. Altamont UN 1-8543.

2/6:00x16 snow tires mounted on Chevy wheels, \$25; 1/5:50x16 tire, like new, \$8. 9-2075.

FIREPLACE WOOD

- ORDER NOW -

F. H. PATTERSON, INC.
100 Adams St. Delmar
Phone 9-3863

BUD'S TV SERVICE

Route 9-W Selkirk, N.Y.
PHONE RO 7-2769

GENERAL INSURANCE KATHARINE G. HERRICK AGENCY

119 McCormack Road
Slingerlands 9-2763

NEW, HIGHER DIVIDEND

3 1/4 % Credited March 31
per year 3% Regular
 1/4 % EXTRA

INTEREST DIVIDENDS NOW CREDITED and COMPOUNDED QUARTERLY

SAVE more, have more, bank by mail or
in person at either of two convenient offices.

OPEN your account today in 100-year-old City
& County Savings Bank. Assets over \$85,000,000.
You'll enjoy saving here and will certainly approve
our prompt, friendly service. Simply fill in and mail
coupon below with deposit of \$5 or more. We'll send
your passbook and postage paid banking by mail en-
velopes by return mail.



MAIL THIS COUPON TODAY

City & County Savings Bank
100 State St., Albany 1, N. Y.
(or) 301 New Scotland Ave., Albany 8, N. Y.

Enclosed is \$..... Please open a savings
account for me as checked and mail passbook to address below.

☐ Individual Account in my name.

☐ Joint Account with.....

☐ Trust Account for.....

☐ Send Banking by Mail Information

Name.....

Address.....

City..... Zone..... State.....

If you send cash, use Registered Mail

2

Say: "Let's Meet at Hinz's"
• Light Lunches, Sandwiches
• All Legal Beverages
• Special: Cocktail Hours 2-6
HINZ'S RESTAURANT
AND GRILL
75 Beaver at Lodge St.

CARPENTER
Jobbing All Kinds
Ed Hehre - 9-1198

**DELMAR
LIQUOR STORE**
Four Corners Delmar
Pete & Kaye Jones
CALL 9-1725
We Deliver

"Fashion Award"

DRY CLEANING SERVICE

if

you are seeking a DRY CLEANER with a built-in
ability to elastically adapt proven methods to
your specific fabrics . . .

you expect undivided, individual attention with a
lavish expenditure of time and effort on EVERY
garment . . .

you want confidence-inspiring knowledge and
experience . . .

**"Then you're for us
- and we're for you!"**



Be sure to read the Postage story on Page 1. Again, the very life of
the Spotlight is threatened! Our only INSURANCE is your SUBSCRIP-
TION! Your \$1 can mean the very LIFE of this publication . . . the
ability to continue to bring you a TRUE reflection of your community!