

The *Spotlight*

VOL. III, NO. 15 • \$1.00 A YEAR

MARCH 20, 1958 • TEN CENTS

"CRASH!" AT BCHS TOMORROW NIGHT

POLL ON FLUORIDATION SCHEDULED SATURDAY; THREE FIREHOUSES TO BE VOTING SITES

The Town Board of the Town of Bethlehem will take an informal poll of the residents of Water District No. 1, on March 22, to determine their sentiments with reference to fluoridation of the water supply. This poll is in no sense a "Referendum" and the results are not binding on the Town Board which is taking the poll solely as a matter of information. Voting will take place at

the Elsmere, Delmar and Slingerlands fire houses, between the hours of 9 a.m. and 8 p.m., on March 22. The residents of each fire district are requested to vote in their respective fire house. Voting will be open to all electors who reside in the water district. The election will be conducted by the members of the town board and the commissioners of the water district.

WHETHER YOU ARE PRO OR CON, VOTE

"CRASH!" What is it? It's the annual Student-Faculty Show produced by the Delmar Youth Canteen. Tomorrow night, March 21, starting at 8 p.m. Comedy and melodrama, classical music, ballet and Charleston will emanate from the Bethlehem Central Senior High School auditorium. The cast of 80 students and 6 faculty members will combine to guarantee an entertaining evening for mothers, fathers, cousins, uncles, aunts, brothers, sisters and all their neighbors.

The Starlighters, a group of 34 high school students, will open the show with "Ain't We Got Fun" and will also sing "Little

IS IT YOURS??

The Bethlehem Police have in their possession a full size girl's bike which may have been stolen three or four weeks ago. Deputy Chief John Hotaling would like to have all those who have lost bikes recently contact him at Police headquarters for possible identification.

Brown Jug" in typical country style with jugs and corn cob pipes. The Tilroe and Kinsley team will present "An Old Time Movie," which rivals Charlie Chaplin in producing side-splitting laughter.

On the more serious side Indian Princess Janice Wetmore will sing "Pale Moon" and Barbara Smith and Elaine Killion will play a piano duet: "Embraceable You." Another talented pianist, Peter Laurie, will add his own distinctive touch to "The A-Train."

A melodrama, cast and directed by the faculty, may reveal hidden talent which remains undiscovered while correcting homework papers. Coach Smalling (all 250 pounds, 6 feet, 5 inches of him!) has been vigorously training his voice to fit the part of a "heroine" and our charming and petite English teacher, Miss Bartlett, has been trying to cultivate a masculine voice for her role as "hero." Nobody should miss this promising Broadway hit. Our original "Sound Museum," starring Marilyn Abele, should please those in the audience who delight in abstract thought. The Bethlehem Rockettes will be present to entertain those who like precision dancing and beautiful muscle-bound legs. Bringing these acts together will be Betty Tinney, the Mistress of Ceremonies.

This represents only a microscopic view of this fabulous evening of entertainment and fun. Don't forget! Save the date of March 21. Admission is \$1.00; for those with a canteen card: 75¢; 35¢ for children under 10.



THE COMMITTEE in charge for the production of "CRASH!" at Bethlehem Central High School tomorrow night includes; seated, left to right: Helen Whittem, Sue Cline, Nancy Houck, Jill Berry; standing: Ann Feichtner, Sue Clark, co-chairman; Dave Smith, Elizabeth Climenko, chairman; Guy Yople, Betsy Johnson, Mary Lou Hazel. Spotlight Photo by Schellhaas.



"... then the bookkeeper ran off with all the funds and I didn't have a cent of insurance with

ROSE & KIERNAN

INSURANCE AND SURETY BONDS

163 DELAWARE AVENUE, ELSMERE, N. Y.

Opposite Delaware Plaza Shopping Center Phone 9-4961



Oil burner service is where we shine!

Once you put your oil burner in our hands, you can forget all about your heating worries. We assume the responsibility for keeping it in good operating order.

Our routine and emergency service is available day and night. And we make prompt delivery of Atlantic's famous triple-refined heating oil. You get clean-burning, dependable, economical, automatic heat.

Please call or write us today and we'll be glad to explain our oil burner service in detail. Take this step now and you can face the coldest weather without a worry.



Call 5-1433
REDMOND & BRAMLEY
OIL COMPANY, Inc.

LETTERS

As the campaign pro and con Fluoridation reached its climax this past weekend, the Letters we received contained some new ideas on both sides. In order to be absolutely fair to both sides, we publish as many as we have room for. We have endeavored to remain completely neutral . . . and at the same time bring you the complete story of each side. —Ed.

Dear Sir:

In view of the fact that a considerable number of people in the Town of Bethlehem feel that fluoridation is a beneficial project I would like to offer this project for serious consideration:

The Town Board would buy fluoride tablets in wholesale lots and distribute them to the families in the town that wish them. The tablets could be given out free or at cost as the Board may choose. This program has the following advantages over water fluoridation:

1. IT IS CHEAPER. It would cost less than 30 cents per child per year. Adults and children whose teeth have all erupted need not take fluorides as they cannot benefit.

2. IT IS SAFE. Some children and adults, due to their physical make up and family eating habits, would consume much more than the average amount of water daily. These are the people who may be affected by fluorosis. The tablet method would keep their intake down to the "safe" level.

3. IT IS MORE EFFECTIVE. Some children may consume little or no water, getting their liquids in other forms. (Our four year old averages less than a

glass per day and his 14 month old brother has yet to have his first taste of water.) These children would not get any benefit from fluoridated water. The tablet method would provide enough.

4. IT IS MORE COMPREHENSIVE. ALL the families in the town could avail themselves of this service not just those who live along the water mains. There are hundreds of Bethlehem families with private water supplies.

5. IT IS FAIRER. Each family can make their own decision as to the use of fluorides. They can change their minds in either direction at any time. No one will be unwillingly forced to either drink fluoridated water or buy pure water elsewhere. No one will be forced to do without fluorides if he wants them.

Since tablet programs are successfully under way in other communities I see no reason why this program should not be satisfactory to all concerned in the Town of Bethlehem.

Very truly yours,
Kenneth Marriott

Dear Sir:

Out of the confusion caused

NEED SERVICE?

JUST GIVE US A CALL . . . WE'LL PICK IT UP . . .

SERVICE IT RIGHT . . . AND DELIVER IT!

We'll pick your car up at your home, do the job—

Shellubrication, safety check, anything it needs—
And return it to you when you want it!

IF YOUR CAR NEEDS SERVICE, YOU NEED US!



HERB'S SHELL SERVICE STATION

PHONE 9-4562

DELAWARE & EUCLID AVE.

Pick Up & Delivery Service

ELSMERE, N. Y.

LETTERS

by the widely differing opinions among laymen and medical men on fluoridation, several undeniable facts emerge:

1. Fluorides are deadly poisonous and adding them to our water supply introduces a toxic cumulative poison into our bodies.
2. Medical authorities differ as to the maximum fluoride dosage the body can stand and the wisdom of adding it to drinking water.
3. Bethlehem's present pure water cannot possibly injure or affect teeth or body. Some reasonable doubt exists when fluorides are present.

With the experts differing among themselves, my reaction as a citizen and tax payer is "a pox on both sides."

Let's leave our water as it is - PURE!

Sincerely,
Billings G. Burlingame

Dear Sirs:

Inclosed please find check for \$3.50 for selling my heater. It sold for \$35.

I appreciate the space given to fluoridation in your paper and I will thank you in advance for inserting the following.

In an article, February 27, 1958, in your paper by Paul A. Hedlund, he asks: "Who can we believe in this fluoridation matter?" It is not a matter of believing what the opposition has said - as much as correcting the misleading claims made by the proponents of fluoridation.

The American Medical Association states that "1 part per million of fluoride is safe." Hydrofluoric acid, a chemical pertaining to or composed of Hydrogen combined with fluorine, a colorless volatile irritant, very corrosive liquid, destructive of most organic matter (anything that has life)

The Bethlehem Community Association was founded to sponsor progressive measures in the area. If they call mass medication - or in this case, poisoning of a pure water supply, a progressive measure, please define the meaning of the word for me. "AGGRESSIVE" describes this movement better - an inter-

ference with the elected officers of the Town of Bethlehem; (thereby making it political).

The acid (poison) is a refuse of the manufacture of some metals. It must be disposed of by the makers of such - Alcoa Aluminum, for one. It is dangerous to leave around and cannot be disposed of easily. So they attempt to distribute it all over the world and to get paid for it. It may seem cheap now; but as they have been working on their program for over ten years, the people should appreciate the enormous amount of money involved in such work and should realize the low cost will not continue, if more of it is used constantly.

The National Fluoridation News says: "How a program of such

magnitude, resting as it does on such a feeble foundation, has achieved such popularity is a deplorable tribute to the machinery of propaganda and a disheartening commentary on the superficiality of some so called 'experts.'" As of September, 1957, approximately 850 towns have defeated fluoridation. 95 have discontinued it after trial runs. The main reason for the discontinuance was the corrosion of pipes, including meters and the illnesses of the citizens.

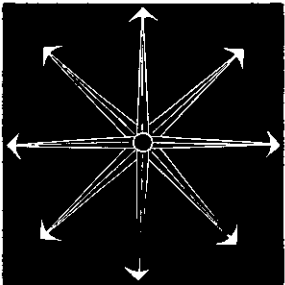
The technical part of machinery to apply fluoride to the water involves human errors and mechanical faults. The adjustments can become faulty and carelessness on the human side may cause an overdose of fluor-

(Please turn the Page)

DRIFTWOOD ARTS & CRAFTS, INC.
750 Delaware Avenue, Delmar, New York
PRESENTS

TREASURES IN COPPER AND BRASS

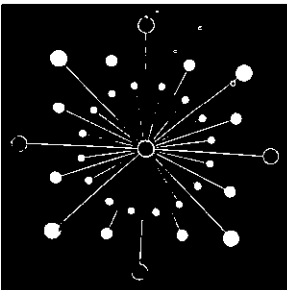
Decorative wall Conversational Pieces. These modern pieces from the Art Works of Driftwood Arts and Crafts, Inc., are exquisitely beautiful, excitingly different originals. They are the latest in decorator styling for the home, office, store, etc. When ordering, specify either solid brass or a delightful combination of copper and brass. All are hand polished and plastic coated to prevent discoloration.



PRICE ONLY \$19.95

MAIL ORDER ONLY

AVERAGE SIZE:
30" ACROSS



No two creations are exactly alike; each and every gift is registered in the books of Driftwood Arts & Crafts, Inc., 750 Delaware Avenue, Delmar, New York.

Any purchase places you on our selected mailing list which includes hand crafted artistic articles of every description, manufactured gifts, and our special department of Foreign Imports . . . rare gifts from enchanting places such as Hawaii, Thailand, Norway, Italy, India, etc.

Rush your order with cash, check or Money Order to:
DRIFTWOOD ARTS & CRAFTS, INC., 750 Delaware Avenue, Delmar, New York.

Taste the Big Difference

BETTER QUALITY FOODS!

DELSMERE

FOOD MARKET

449 Delaware Avenue

Opp. Delmar Grade School

Top Quality

MEATS

Always

FINEST QUALITY

LEGS o' LAMB

ONLY **69**^C **LB.**

Delicious, Sweet, Tender
NO MUTTONHEADS HERE!

That Heavenly . . .

Chock full o' Nuts

COFFEE

88[¢] **lb.**
Can

Try it now at this Special Price!

Del Monte

Super-Sweet

PEAS ^{No. 303} **2** **33**[¢]
Cans

Del Monte

TOMATO JUICE

Giant **27**[¢]
46 Oz. Can

Sale Ends Saturday, March 22
Quantity Rights Reserved

BUSINESS & PROFESSIONAL
Telephone Exchange
 72 Delaware Avenue
 24-hour Service 9-3524

WILLIAM G. SCHWING
 Tax - Consultant
FEDERAL and STATE
RETURNS PREPARED
 1709 Western Ave., Albany 3
 PHONE 2-5015

THE NATIONAL COMMERCIAL BANK AND TRUST COMPANY

COMPLETE BANKING SERVICES

Checking Accounts	Home Improvement Loans
Savings Accounts	Mortgage Loans
Christmas Fund Accounts	Personal Loans
Vacation Fund Accounts	Business Loans
Banking-by-Mail	Night Depository

*Safe Deposit Boxes

COMPLETE TRUST SERVICES

*DELMAR BRANCH 9-4714 ELSMERE BRANCH 9-4132

Ample Parking Space

Friday Evening Banking Hours 6-8 P.M.
 (At Delmar Branch Only)

Member Federal Deposit Insurance Corporation

Cherrybrook GROUP by KLING



There are over 19
pieces in this
Colonial group in
SOLID CHERRY.

Chest on chest
shown
\$155.00

Closed Monday,
open Thursday
until 9 P.M.

"The House of Quality"

JOHN B. HAUF
INCORPORATED

175 Central Ave., Albany

Phone 4-2104

LETTERS

ides to be added, perhaps fatal to some older people.

The undersigned does not belong to any organized fluoride group. I have read a great deal on the subject and I have come to the conclusion that the Town of Bethlehem should have no part of fluoridation. In most cities where fluoride has been introduced to the water, the people had little opportunity to properly inform themselves. I feel our Town Board should not only refuse to endorse fluoridation but to resolve to prohibit any reconsideration of the question.

Leonard Welter

Dear Sir:

Much has been said by both advocates and opponents of fluoridation so that there are probably many people who are confused and uncertain as to which side of the question to support. The uncertainty which exists seems to center around two questions: 1) will it cause any damage to the water pipes and plumbing fixtures, and 2) is it safe?

With regard to the possibility of corrosion of pipes and plumbing fixtures it should be emphasized that one of the groups most qualified to speak on this subject is the American Water Works Association. This group has given its wholehearted support and endorsement to the fluoridation program, as has the Conference of State Sanitary Engineers. Before moving to this area the writer lived in a community which has added fluoride to the water for many years (Evanston, Illinois). Several neighboring communities (Elgin, Elmhurst, Joliet, and Aurora, Illinois) have fluoride occurring naturally in the water, some of them for as long as fifty years. There is absolutely no evidence in any of these that fluoride has had any influence on water pipes or plumbing fixtures. To those of us who have lived in such communities and have had first-hand experience with it, this rumor would appear amusing if it were not so absurd.

With regard to safety, it should be pointed out that this is not a new idea. The influence of small quantities of fluoride in

drinking water has been under study since 1916. Many communities in the United States have fluoride naturally present in the water supply and have had for more than half a century. Hundreds of other towns and cities have deliberately added fluoride to the public water supply in order to receive the same beneficial effects on the teeth. At the present time there are over thirty million people in this country who consume fluoridated water in such large cities as Washington, D.C., Philadelphia, and Chicago, to name but a few of the larger ones. Thousands of examinations by physicians and dentists have been carried out on the residents of many of these communities and in no single instance has there been any indication of ill effects. On the other hand, the reduction in the incidence of cavities in the teeth has been most striking.

The safety of fluoride in drinking water is not something that we need to wonder or speculate about. It has been approved and endorsed by virtually every outstanding medical, dental and

(Please turn to Page 6)

THE DUMONT ELECTRONIC EnginScope

*checks the engine
in your car
as it runs!*

-SAVE GAS!
-GET BETTER
PERFORMANCE!
-AVOID FUTURE
BREAKDOWNS!

TRI-VILLAGE
ESSO
SERVICENTERS
Call 9-4800

Cor. Delaware & Elm Avenues
AND
309 Delaware Avenue
BOTH in DELMAR

SUBURBAN APPLIANCE

Proudly announces its appointment as a franchised dealer for

STROMBERG-CARLSON

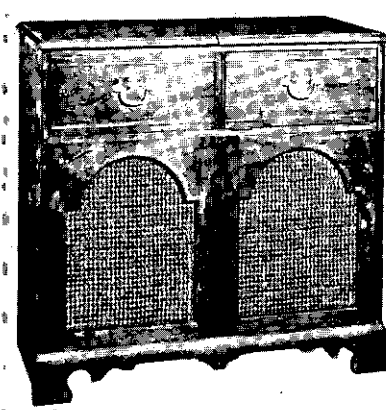
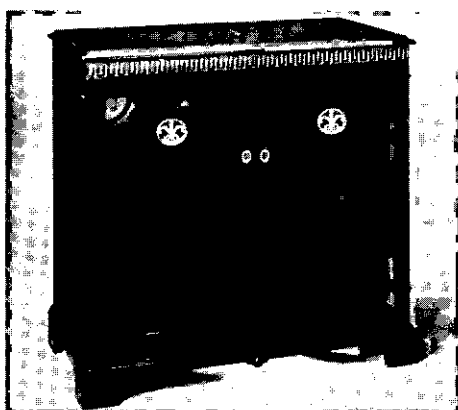
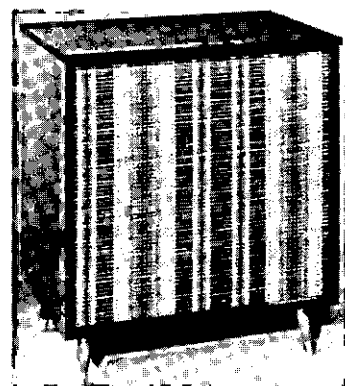
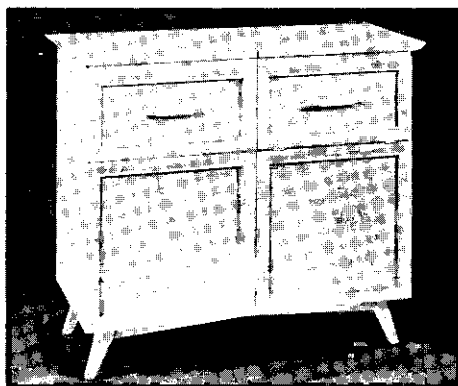
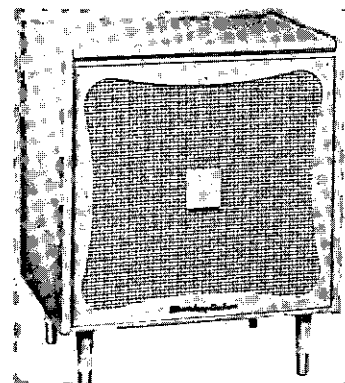
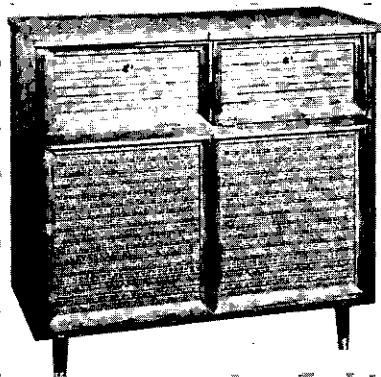
CUSTOM FOUR HUNDRED°

High Fidelity

The most exciting High Fidelity news in the Tri-Villages in years! Beautiful music, perfectly reproduced, belongs in your home, and STROMBERG-CARLSON High Fidelity Consoles are designed for your home. Each component part of each set is electrically and acoustically matched to the other to bring you the ultimate in beauty and purity of tone reproduction. STROMBERG-CARLSON sounds better because they are better engineered and better made. Truly, the sound of these instruments must be heard to be appreciated.

The magnificent styling and cabinetry of each STROMBERG-CARLSON High Fidelity Console is a compliment to your good taste. There are models in traditional, contemporary, and modern styling. Each set is made of solid hardwood and satin-finished hardwood veneers in choices of cherry, walnut, limed oak, and mahogany. Each model is a masterpiece of furniture styling to fit easily into the design scheme of your home.

Engineered for the man, designed for the woman, STROMBERG-CARLSON High Fidelity instruments are priced from one hundred-odd dollars to about six hundred. Come in for a demonstration today - you'll be delighted you did!



"There is nothing finer than a Stromberg-Carlson"°

HOME DEMONSTRATIONS
ON REQUEST

Suburban
APPLIANCE
DELAWARE PLAZA
DELMAR 9-3557

OPEN 9 TO 9 WEEKDAYS
10 TO 5:30 SATURDAYS

Any poll of the people for ascertaining a pro or con preference depends upon a BIG turnout . . . if it is to be a completely fair picture of what

a community wants. Therefore, **VOTE** on Saturday, March 22, at the Fire House nearest you! Hours: 9 a.m. to 8 p.m. Question: Fluoridation



Of Fine Gifts

Give Easter gifts of quality . . . choose from the wide variety presented at Edythe Marguerite! For a gift to express your affection and a gift that anyone will love . . . be sure to see us First!

- NOVELTIES
- GREETING CARDS
- FINE GIFTS

Edythe

Marguerite
GIFT SHOPS

Delaware Plaza, Delmar
573 N. Scotland Av., Albany

SAVE TIME AND MONEY!

OPEN YOUR

BANK BY MAIL

ACCOUNT NOW!

WHERE YOUR SAVINGS EARN MORE!

Albany Savings Bank

The Oldest and Largest Savings Bank in Albany

NOW!

3 1/4%
per annum*

Dividends compounded and paid quarterly . . . figured from date of deposit . . . your best possible savings combination!
* anticipated dividend.

Member Federal Deposit Insurance Corporation

To open your Bank by Mail Account . . . just fill out the coupon below. That's all you have to do! Your account will be opened promptly, and your passbook, together with Bank by Mail postpaid envelopes, will be mailed to you at once. Or, send for the free Bank by Mail booklet.

SEND THIS COUPON NOW

ALBANY SAVINGS BANK

Dept. 36
Albany, New York

I enclose \$..... I wish to open a savings account as checked below.

- ☐ Individual Account.....
- ☐ Joint Account with.....
- ☐ Trust Account for.....
- ☐ Send free Bank by Mail booklet.

Name.....

Address.....

City..... State.....

Send check or money order . . . or cash by Registered Mail.

36

LETTERS

public health organization in the country, including the American Dental Association, the American Medical Association, the American Public Health Association, the World Health Organization, the U.S. Food and Drug Administration, and dozens of other such organizations. These are the people we rely upon for advice in the event of illness and all questions affecting public health. We accepted their advice on the Salk Polio Vaccine and the Asian Flu Vaccine, and as a consequence much sickness, suffering and unnecessary expense has been avoided. Why should we turn our backs on their advice regarding fluoridation? Do you really feel that you have

good cause for doing so?

Sincerely yours,
George D. Wessinger,
Ph.D., D.D.S.

Father Tempest

Dear Spotlight:

I grant that Judge Leibowitz has a good point in stating that fathers can command obedience and respect. However, I would like to point out that most of the fathers of our juvenile delinquents were "away at war," during an important stage of each boy's development. A father-son relationship is a beautiful thing, if it is carefully nurtured; an absence of 1 to 3 or more years is a disturbing element to any young child. Discipline from a father, who is virtually a stranger upon his return, had to be softened to be accepted by the abused "MOM."

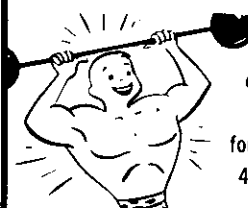
I do not mean to uphold any juvenile delinquent; I just can't agree with the Judge's deductions. Our American boys have grown up with the thought - but not the actuality - of war. Maybe it was Mussolini, and his eventual punishment, that has made the Italian boys so respectful. And yet, if they are all such angels in Italy, why is it that so many of our American gangsters are of recent foreign extraction?

J.K.

EXCITING PERSONALIZED STATIONERY

at
C.S. *Pulman* Co.

NOW . . . FEEL 21 AGAIN!
11 VITAMINS, 10 MINERALS



In one easy-to-take capsule for LESS THAN 4c PER DAY!

NEW McKESSON'S

Bexel Formula #21

Multiple Vitamin-Mineral Capsules



100 CAPSULES

\$3.98

Less than 4c a day

PLAZA PHARMACY

At Delaware Plaza 9-4451

Portrait Special!

MONTH OF MARCH ONLY!

THREE 8 x 10
and SIX WALLET SIZE
PRINTS

or

FOUR 5 x 7
and SIX WALLET SIZE
PRINTS

for

\$14.95

**Schellhaas
Camera Store**

Delaware Plaza Phone 9-1472



LAST FALL we defended the use of the traffic light system for directing the one-way traffic across the Delaware Avenue Viaduct over the Normanskill. We can't honestly defend it now. With no more than two men working on the project AND with room for two cars to pass if care were used, there didn't seem to be any good reason for the lights being turned on when this picture was made. Even worse, was the day of the last big storm when cars were delayed as long as 45 minutes, according to radio news reports. Everyone knows the necessity for finishing the job - but motorists will turn wrathful unless good common sense is used in the light operation and the delay they cause. Exclusive Spotlight Staff Photo.

BUD'S TV SERVICE
Route 9-W Selkirk, N.Y.
PHONE RO 7-2769

FIREPLACE WOOD
- ORDER NOW -
F. H. PATTERSON, INC.
100 Adams St. Delmar
Phone 9-3863

DELAWARE
Plaza in Delmar
MODERN ONE-STOP SHOPPING

SELF-SERVICE and **MILD** salesmanship both tend to make the Plaza a nicer place to shop. In the self-service stores you are free to make your own purchase selection. In those stores where clerks are a necessity, you'll find that their desire to serve you **WELL** exceeds their desire for a sale.

"Service is the 1st order of good business"

Parking space for 1,000 cars - 15¢ bus fare to and from Albany - Country-store friendliness - Complete city-store selection.

Again . . . A Murray-Simon, Inc. Project

THE
Easter Parade
starts in STEEFEL'S BOYS' DEPARTMENT



THE GOOD SPORT LOOK

Especially smart, this splash patterned textured sport coat, styled in the Ivy League manner, with narrow lapels, natural shoulders. You'll also find the new three-tone dark striped jackets in our collection as well as many others.

Sizes 6 to 20 from \$13.95 to \$24.95

To complete his outfit, tapered Ivy slacks in acetates, rayons, all wools - flannels and gabardines.

Sizes 6 to 20 from \$4.98 to \$12.98

Steefel's **WE FEATURE HUSKIES**
YES . . . YOU CAN CHARGE IT!!

DELMAR STORE OPEN EVENINGS TILL 9

NEW, HIGHER DIVIDEND

3 1/4 % Credited March 31
per year 3% Regular
 1/4 % EXTRA

INTEREST DIVIDENDS NOW CREDITED and COMPOUNDED QUARTERLY

SAVE more, have more, bank by mail or
in person at either of two convenient offices.

OPEN your account *today* in 100-year-old City & County Savings Bank. Assets over \$85,000,000. You'll enjoy saving here and will certainly approve our prompt, friendly service. Simply fill in and mail coupon below with deposit of \$5 or more. We'll send your passbook and postage paid banking by mail envelopes by return mail.



MAIL THIS COUPON TODAY

City & County Savings Bank
100 State St., Albany 1, N. Y.
(or) 301 New Scotland Ave., Albany 8, N. Y.

Enclosed is \$..... Please open a savings
account for me as checked and mail passbook to address below.

☐ Individual Account in my name.

☐ Joint Account with.....

☐ Trust Account for.....

☐ Send Banking by Mail Information

Name.....

Address.....

City.....Zone.....State.....

If you send cash, use Registered Mail

A GOOD REASON TO SUBSCRIBE!

One thing is sure: Spotlight sub-
scription rates are bound to go up! Insure yourself against the rise
by sending in \$2 for 3 years now!

CALENDAR OF EVENTS

Things to do! Places to go!
(All open to the general public)

Sunday, March 23
"The Eighth Sea" (St. Lawrence Seaway); "The Road Ahead" (The Northway), motion pictures in color, at the Albany Institute of History and Art, 3:15 p.m.

Tuesday, March 25
Montovani and His Orchestra at RPI Field House, 8:30 p.m.

Tuesday, March 25
Children's Films: "Paper" and "Pacemaker of Progress," at Albany Institute of History and Art, 3:45 p.m.

Tuesday, March 25
Parent's Night at Bethlehem Central High School.

Wednesday, March 26
Picture Book Hour for children 3-5, Delmar Public Library, 10:15 a.m.

Wednesday, March 26
Albany Institute Members Series: Bosley Crowther, Albany Institute of History and Art, 8:30 p.m.

Thursday, March 27
Story Book Hour for children 6-9, Delmar Public Library, 4 p.m.

Thursday, March 27
Senior Citizens' Hobby Show at Bethlehem Central High School Cafeteria, 7 p.m.

March to Mid-April
Exhibit of wooden currency from collection of Laurence Clough, Delmar Public Library Lounge.

March to Mid-April
Exhibit of "Hens on the Nest" from collection of Mrs. Harold Williams, Delmar Public Library Lounge.

March 17 to April 15
One-man art show: Florence Hal-lenbeck, Delmar Public Library.

("The Calendar of Events" is a public service for worthwhile and interesting happenings, mostly outside our area; "Here and There" brings you the events of organizations WITHIN our area. Your co-operation in sending notices for both is appreciated.)

NEW CLUB OFFICERS

New officers of the Tri-Village Welcome Wagon Newcomers Club are: President, Mrs. Walter F. Evans; First Vice-President, Mrs. William J. Dulany, Jr.; Second Vice-President, Mrs. Robert J. Ganley; Secretary, Mrs. Vernon L. Winchester; and Treasurer, Mrs. Andrew M. Ditton.

ALFRED'S Watch & Clock Shop

95 State Street
Albany, New York

We Specialize in Repairing
GRANDFATHER
and
CUCKOO CLOCKS

Free Pick-up & Delivery
Service

Call 62-1333
After 6, Call
9-3524

—Established 35 Years—

ANNOUNCEMENT

Dear Friends and Neighbors
of Delmar, Elsmere & Glenmont:

Did you know that you can have the finest service on your TV, Radio, Tape Recorder and Hi-Fi (Including all imported makes) just by calling

von Bank's TV
TELEPHONE 4-5887
Honesty — Responsibility
19 years experience assures
you quality service

FRANZ von BANK
Oakwood Road, Glenmont, N.Y.
(Off Bender Lane)

Write or Call

for our

1958 CATALOG

containing all the newest
varieties of

FLOWER & VEGETABLE
seeds, including
PETITE MARIGOLDS

Wee Willie Sweet William
(Annual)

MAYTIME PETUNIAS
and Many Others

Visit Our Store for Your
GARDEN NEEDS

Price's Seed Store, Inc.
90 Hudson Avenue, Albany
PHONE 4-0815

WE DELIVER

New DANCE CLASSES Now Forming

FOR

*BEGINNERS

*INTERMEDIATES

*ADULTS

-0-

Classes forming for Ballet
and Modern Dance

-0-

Call

9-4696

VALERIA DANCE STUDIO

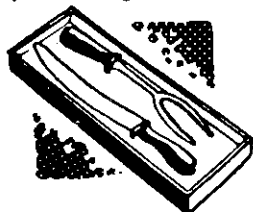
401 Kenwood Avenue

ALCOHOLICS ANONYMOUS
P.O. Box 102, Delmar, N.Y.



**OUR
GIFTS
TO
YOU!**

Every week we are giving
away a valuable prize to one
of our customers. Ask how
you can qualify when you
bring or pick up your laundry
or dry cleaning.



-SECOND WEEK WINNER-

Mrs. Friedle
Slingerlands

-THIRD WEEK WINNER-

Mr. Millett
Feura Bush Road

-FOURTH WEEK WINNER-

Mrs. Marinella
Slingerlands

-FIFTH WEEK WINNER-

Mrs. Nelson
Clarksville

-SIXTH WEEK WINNER-

Mrs. Mielnik
Delmar

HISTED LAUNDRY

DELMAR CLEANERS

226-228 Delaware Avenue
Delmar 9-832

Education- Ike Wants Emphasis on Science

The education program recommended to Congress by the President is an integral part of the national defense program. It is designed to improve the quality and increase the quantity of scientists, mathematicians, linguists, and other experts in fields closely related to national security.

Atomic and hydrogen bombs, ballistic and guided missiles, satellites and supersonic aircraft have brought home to every American the relationship between scientific and technological progress and military strength.

Because large numbers of the students in the upper fourth of our high school classes either do not complete high school or do not go on to college, we are losing the services of thousands of potential scientists and mathematicians each year.

The Administration proposes to do something about preventing this loss.

Its program provides Federal aid to State and local governments and to educational institutions. Most forms of aid in the proposed program are to be temporary, ending or tapering off four years after their establishment.

The President has recommended:

Matching grants to the States for testing the aptitudes and abilities of children at the junior high school level and for improved counselling and guidance of young students.

40,000 Federal scholarships for college students, with preference to those with good preparation in science and mathematics.

Matching grants to the States to improve the teaching of science and mathematics and strengthen state departments of education in these fields.

5500 fellowships for graduate study in American universities.

Grants to graduate schools for expansion of teaching staff, libraries, and equipment.

Grants for facilities for teaching languages and language teachers, particularly the languages of Asia, Africa, and the Near East.

For



Ship'n Shore®

*embroidered
water-lilies
afloat on
linen-look
rayon*

3⁹⁸



A blouse you'll love for so many reasons! Its linen-look luxury... beauty-sudsing ways... lovely front-and-back views of lavish embroidery. All new from Ship'n Shore... with wide leaf collar, short-short notch sleeves. Soft white, three-tone embroidery. Sizes 30 to 38.

See all our new-idea blouses by Ship'n Shore, from 2.98

Prin's

DEPT. STORES
Incorporated

Corner Second and Delaware
Avenues Phone 62-4235

Our New Scotland Avenue Store
is open every evening except
Wednesday.

Delaware Avenue Store open
Thursday and Friday till 9.

Corner N. Scotland and Allen
Phone 8-4741

TREE REMOVAL

Pruned

Rebuilt

A. H. AIREY

M. ESSEX

PHONES 5-8575 - 9-3702

**SEPTIC TANK
AND DRAINAGE SERVICE
SEWERS AND DRAINS
CLEANED ELECTRICALLY
TORK & PAFUNDA
Voorheesville
RO 5-7386 RO 5-2784**

Look for the Sign of
QUALITY & ECONOMY



Over 200 Kitchens Sold & Installed in 1957 - Call 2-5411

Ask Your Doctor About Our Pharmacy!

Surgical Supplies - Wheel Chairs - Crutches
(For Sale or Rent)

THE CARROLL PHARMACY

PRESCRIPTION SPECIALISTS

4 Pharmacists

Arthur Starman
Albert D. Warner

PhG.
PhG.

William R. Warner
Joyce Nautel

B.S. Phar.
B.S. Phar.

372 Delaware Avenue, 4 Corners, Delmar - Phone 9-1769
FREE DELIVERY

TV WASHERS DRYERS DISHWASHERS

Factory Engineered Replacement Parts

E. F. MUZZEY, Jr.

SERVICE IS OUR BUSINESS

Channel 10 Antennas Installed for As Low As \$15.95

Call 9-3419

24-Hour Service

Office: Spore Road, Delmar R. D.

NEW SPOTLIGHT FEATURE BEGINS NEXT WEEK

The Spotlight, always on the lookout for new features and interesting columns to include, will inaugurate "Heir News" next issue. This new column will be devoted to births throughout our area.

More than that, this column will include the names and ages of the other children in the family.

Here's how you can get your newest and "most wonderful" baby included: Write out all of the information, including the father's and mother's names, the baby's name, birth weight, hospital; home address . . . and then list other children in the family and their ages.

When you've done all this, enclose it in an envelope and address it: Spotlight, Delmar.

DRAMA GROUP OF DELMAR PROGRESS CLUB TO MEET

The Drama Group of the Delmar Progress Club will meet on Monday, March 24, 2 p.m., at the home of Mrs. Charles Carroll, 369 Wellington Road, Delmar.

Theme of the meeting will be "The Drama of TV" presented by Mrs. Raymond Brownell, Jr., who will have as her guest, Gig Pogan, Operations Manager of Station W-TEN.

HIGH SCHOOL COMMUNION BREAKFAST ON MARCH 30

The annual High School Communion Breakfast of St. Thomas' Church, Delmar, will be held on Palm Sunday, March 30, at the Elsmirian Restaurant following the 9 o'clock Mass.

The speaker will be Rev. Edgar Holden, O.F.M. Conv. Tickets are \$1.50 and may be obtained at the Rectory.

The Fluoridation issue will be settled this weekend. But there are other subjects for letter writing. Send us your letter now.

Say: "Let's Meet at Hinz's"

- Light Lunches, Sandwiches
- All Legal Beverages
- Special: Cocktail Hours 2-6

**HINZ'S RESTAURANT
AND GRILL**
75 Beaver at Lodge St.

Instead of waiting for your subscription to expire, send \$2 for 3 FULL years right now!!

Ralph S. Butler & Sons
Incorporated

"All Forms of Insurance"

252 Dela. Ave., Delmar 9-4581

**Spring's
Almost Here!**

Is your driveway in
BAD SHAPE??

Does your lawn need
Aerating, Fertilizing and
Seeding???

PHONE 9-3823

J. W. MICHAELS

Specializes in

- ... QUALITY TOPSOILS
and SEED
- ... FINISH BULLDOZING
and GRADING
- ... SEEDING

If a change in Menu
is your need,

It's to McCARROLL'S
you should proceed!

Our CORNED BEEF
makes the Meal.

It has Flavor, Zest
and Taste Appeal!

**MC CARROLL'S
SUPER MARKET**

SINCE 1921

272 Second Av., Albany

CORNED BEEF
Our Specialty

Have You Visited Our

Thrift ShopKenwood Braille Thrift Shop
221 Lark Street Albany

Subscribe to the Spotlight today

**FOWLER'S
LIQUOR
STORE**SEE GEORGE OR HARRY
FOR BETTER SPIRITS**We Deliver**

Theatre Building

333 Delaware Ave 9-2613

**Switch
to****Modern Heating
at its very best****WILLIAM McEWAN
Coal & Oil Co.**

Since 1863

4-1211 4-1211
26 Clinton Ave., Albany, N.Y.**CAMERA CLUB WINNER**

Above is the First Place winner in the black and white print competition at a recent Delmar Camera Club meeting: "Solitude," taken by Loren Basch.

At that time it was decided to cancel the meeting scheduled for Tuesday, March 25, in favor of attending the illustrated lecture, "Better Color with Your Camera" by John W. Doscher being given at the Sheraton-Ten Eyck Hotel at 8 o'clock on the same evening.

At a recent meeting, the top entries in the color slide competition were: First, Penguin Country by George Martin; second, Early Moonbeams by Bill Bennett; third, Snow Wonder by Ed Feth; fourth, Snow Ledge by Ken Smith; fifth, Empty Corral by Bill Bennett.

In the black and white prints, Ralph Hotchkiss took second place with his Maine Birches; third place was taken by Rev. Charles Kaufuss, whose picture appears elsewhere in this issue.

**SUBSCRIBE
TO THE
SPOTLIGHT**

\$1.00 1 Year

\$1.50 2 Years

\$2.00 3 Years

THE SPOTLIGHT
Delmar, New YorkPlease enter my subscription
to the Spotlight for a period of1 year 2 years 3 years
(Check ONE)I enclose \$1 \$1.50 \$2
(Circle ONE)

Date

Name

Address

REMODELINGALL TYPES OF
**CARPENTER
WORK**H. A. Ertel
9-1048Ed. Hehre
9-1198

The Spotlight features 2 columns each issue devoted to coming events: Here & There is almost exclusively local meetings and

**DELMAR
LIQUOR STORE**

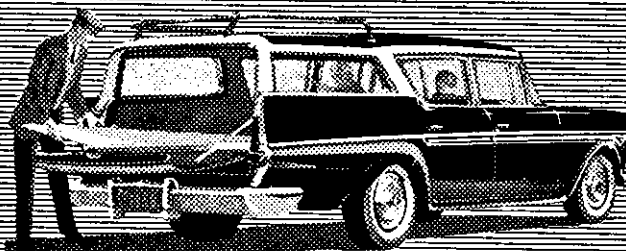
Four Corners Delmar

Pete & Kaye Jones

CALL 9-1725

We Deliver

happenings, while the Calendar is designed for events outside our area. Either way, every organization should be represented.

Is your car keeping you bankrupt?**Make the Switch to****Rambler****First in economy, tops in resale value**

Rambler sales are up 66%! Here's why: Rambler 6 with overdrive holds 3 NASCAR Economy Records, less than 1¢ a mile for regular grade gas. Rambler's tops in resale value. And only Rambler gives you American big car room and comfort *plus* European small car economy and handling ease!

AMERICAN MOTORS MEANS MORE FOR AMERICANS

Studler's Sales & Service, Inc.

9-923 - 24 Hr. Towing Serv. - 9-924 243 Delaware Ave.

RAMBLER 6 AND V-8 • AMBASSADOR V-8
RAMBLER AMERICAN • METROPOLITAN

20% DISCOUNT

Because of the storms and inclement weather
WE HAVE EXTENDED THE DATE TO MARCH 29 ON OUR

SEMI-ANNUAL SALE OF

UNFINISHED FURNITURE

Made of Beautiful, Sturdy WHITE PINE, smoothly sanded
and ready to paint or stain to your own taste

FREE DELIVERY - TERMS: 25% DOWN, 3 MONTHS TO PAY
NO CARRYING CHARGE

Delmar Lumber & Builders Supply
INCORPORATED
9-968 9-968

FLUORIDATE IN FIFTY-EIGHT!

During the past several months the Bethlehem Community Association has been active in bringing the facts on water fluoridation to the attention of residents of the Tri-Village area. Its purpose has been to provide a means for the expression of opinion so that this important issue could be decided without further delay.

This is the year of decision! Now, while our new water system is nearing completion, is the time to notify our Town Board that we want our water supply fluoridated, as so many other forward-looking towns and cities throughout the U. S. have done. We should not further delay giving our children, and eventually the entire community, the benefits of this effective means of preventing dental decay.

BE SURE TO
THIS SATURDAY
AT YOUR FIREHOUSE

VOTE

Here & There

THE SLINGERLANDS PARENT-Teachers Association will sponsor a bakegoods sale Tuesday, March 25, from 1:30 to 4:00 p.m. in the school cafeteria. The committee for the project includes: Mrs. F.C. Stimmel, chairman; Mrs. Donald P. Menges, Mrs. Roger T. Drew and Mrs. R.S. Mullens.

The regular meeting will be held at 8:15 the evening of the 25th in the school auditorium. Mark A. McClosky, chairman of the New York State Youth Commission, will speak on "Pre-delinquency."

Following the meeting refreshments will be served by the first grade Mothers.

-0-

THE SELKIRK PRE-SCHOOL group will meet on March 25 at the South Bethlehem school at 8 p.m.

The speaker this month will be Mrs. Margaret Williamson, kindergarten teacher at that school. Her subject will be "The Kindergarten Pupil."

All pre-school and kindergarten parents in this area are urged to attend.

-0-

A UNITED NATIONS Buffet Dinner, featuring Italian Spaghetti and Chinese Shrimp Chow Mein, will be served on Friday, March 21 at the South Bethlehem Methodist Church. There will be continuous serving from 5 to 7:30 p.m. Salads and cookies from many lands will be offered. Authentic costumes, quaint curios, and a United Nations exhibit will be arranged by Mrs. Donald Hunter and Mrs. Edward Phillips. Members of the committee made a special trip to United Nations headquarters in New York to acquire items for the exhibit. Sponsored by the Woman's Society of Christian Service, the dinner will be prepared by Mrs. Alfred Radliff and Mrs. Jack Haskell, chairmen; assisted by Mrs. Robert Mayo, Mrs. Arthur Fross, Mrs. Harold Chandler, Mrs. L. Wayne Dunlap, Mrs. Vincent Lyons, Mrs. Horace Stott, Jr., Mrs. Edward Ginter, Mrs. Stuart Seaburg, and Mrs. Charles Court.

SCOUTMASTER WILLIAM PELZER announces that the Slingerlands Boy Scout Troop will hold



THE STONE BRIDGE by Rev. Charles Kaulfuss took Third Place in the black and white print competition which featured a recent meeting of the Delmar Camera Club. The club has Bill Bennett, one of the truly outstanding amateur photographers of the area, as its president. Club membership is open to anyone in the area who is a camera enthusiast.

Imported SINGING Canaries!
PARROTS! PARROTS!
FULLER'S PET SHOP
TELEPHONE 9-3309
Cor. Lincoln & Dela. Aves.

GENERAL INSURANCE
KATHARINE G. HERRICK
AGENCY
119 McCormack Road
Slingerlands 9-2763

Here & There

its annual Pancake and Sausage Supper in Fellowship Hall at Slingerlands Community Methodist Church on Thursday, March 27. Mothers of the troop members will prepare and serve the dinner.

Serving will begin at 5:30 and continue until all have been cared for.

-0-

THE WOMAN'S SOCIETY of Christian Service of the First Methodist Church, Voorheesville, N.Y., will have a Ham-Fish supper, Friday, March 21. Serving will begin 5 p.m. and continue until all are served. Tickets may be purchased at the door.

-0-

ON SUNDAY AFTERNOON, March 23, three films will be shown at the Albany Institute of History and Art at 3:15 p.m. This is one of the Sunday afternoon program series which the Institute offers to the public without charge.

Two of these color films deal with current New York State projects now in the public eye. The first is called "The Eighth Sea" and is about the St. Lawrence Seaway. The second is called "The Road Ahead" and is about the proposed Northway to Canada.

The third film is a presentation for High School photographers who may be interested in entering the current Eastman Kodak photography contest for teenagers. This contest will run through March 31. The contest and film will be explained by Carl Baumbach.

-0-

THE MEETING OF the Glenmont P.T.A. will be Wednesday, March 26, 8 p.m., at the school. Election of officers will be held and plans for the installation banquet will be discussed. Pack 88 (Cub Scouts) will present a program before the business meeting. All parents of the Cub Scouts are invited to attend.

-0-

THE CLARKSVILLE CIVIC Club covered dish supper, originally scheduled for last month and postponed because of the storm, will be held March 21 at 6:30 p.m. at the Clarksville School.

Members are asked to bring, in addition to their food donations and place settings, white elephants, either edible or usable, to be raffled off at the "White Elephant" sale.

In the event members and guests are unable to reach the school because of a still larger white elephant outside, i.e., more snow, the affair will be held next July up at Thatcher Park.

SPOTLIGHT CLASSIFIEDS

What Do You Want To
BUY?

What Do You Want To
SELL?

What Do You Want To Have
FIXED?

Spotlight Classifieds can answer your needs. Hundreds of items are bought and sold through the Spotlight "For Sale" Columns. If you are a home owner, you'll find the BUSINESS SERVICE a big help in getting those odd jobs done.

To Place a Classified, Call
POplar 8-2143

Open evenings, Saturday & Sunday for your convenience

A Subscription to the Spotlight brings you more and more

*"Our
Fondest
Hope"*

To Be
Your
Clothes'
Friend



REGISTER
Your Child For
DANCING LESSONS
With
Miss Wynn Wilkins
Instructions in
TAP - BALLET and
ACROBATIC DANCING
Register at the
BETHLEHEM VFW HALL
404 Delaware Avenue
TUESDAY, MARCH 25
from 2 to 4 o'clock
Classes will start
FRIDAY, MARCH 28
Pupils from 4 years of age

Tebbutt's CHURCH CALENDAR of EVENTS

NEW SALEM REFORMED CHURCH,
New Scotland Road; P.O., R. D. 1,
Voorheesville - Rev. John H.
Austin, Pastor. Tel. RO 5-2698.
SUNDAY-10 a.m. Sunday School;
11 a.m. Morning Worship.

**CLARKSVILLE FIRST METHO-
DIST CHURCH** - Rev. Fred R.
Brown, Pastor.
SUNDAY: 9:45 Church School; 11
Morning Worship.

**CLARKSVILLE GOSPEL FEL-
LOWSHIP** meets at the home of
Rev. Wendell Hiltzley, Olive St.
POplar 8-2631.

SUNDAY-7:30 p.m. Gospel Meet-
ing.
TUESDAY-7 p.m. Jolly Teen Time
THURSDAY - 7:30 p.m. Bible
Prayer Hour.

UNIONVILLE REFORMED Church
Delaware Turnpike, Unionville -
Rev. Louis H. Chisman.
SUNDAY: 10:00 a.m. Sunday
School; 11:00 a.m. Worship Service

**ST. STEPHENS EPISCOPAL
CHURCH,** Elsmere Ave., Delmar -
Rev. Charles H. Kauffuss.

SUNDAY: 8 a.m. Holy Eucharist;
9:30 a.m. The Family Eucharist
(All classes with the exception
Kindergarten, will attend Church
Service and then proceed to their
class in Church School after the
first part of the Service; 11 a.m.
First Sunday-Holy Communion;
other Sundays: Morning Prayer.
(Nursery).

**NEW SCOTLAND PRESBYTERI-
AN CHURCH,** Rev. Homer B. Sil-
vernail.

SUNDAY, 10:30 a.m. Church
Worship; 11:30 Church School;
7:30 p.m. Youth Fellowship.

The Calendar of Church Events is
sponsored by:

TEBBUTT FUNERAL SERVICE

We are proud of our record of more
than 100 years of dignified, de-
pendable service. Our reputation
was built on conscientious atten-
tion to the individual needs of
every family we serve . . . at
prices that all can afford.

420 Kenwood Avenue, Delmar
9-2212

176 State Street, Albany
3-2179

12 Colvin Avenue, Albany
89-0116

11 Elm Street, Nassau
Nassau 8-1231

BETHLEHEM LUTHERAN Church
Cor. Elm and Mulhay Aves - Rev.
Lawrence Heuchert, 440 Kenwood
Avenue, Telephone 9-1615.

SUNDAY,
9:45 a.m. Sunday School
11 a.m. Worship Service

TUESDAY:
10:30 a.m. Bible Study (Adults)
WEDNESDAY, March 26-7:30 p.m.
Special mid-week Lenten Ser-
vice. Topic: "Betrayal in Geth-
semane."

NURSERY is open during Sunday
Services and Wednesday even-
ings during Lenten Services.

SATURDAY:
10 a.m. Weekly Confirmation
Class.

DELMAR REFORMED CHURCH,
Delaware Avenue - Rev. Dr. Le-
Roy C. Brandt.

THURSDAY, March 20 - 7:30 p.m.
Senior Choir rehearsal.

FRIDAY, March 21 - 3:30 p.m.
Junior Choir rehearsal; 6:30 p.m.
Doubles Club dinner and program

SUNDAY, March 23-7 a.m. Masonic
Communion Service and break-
fast; 9:45 a.m. Church School;
10 a.m. Arnold Adult Bible Class;
11 a.m. Nursery; 11 a.m. Worship
Service: Dr. Brandt will preach
on "Swords and Words;" 4:45
p.m. New Members class; 5:45
p.m. Youth Church; 6:30 p.m.
Youth Fellowship.

MONDAY, March 24-7 p.m. Cub
Scout meeting.

TUESDAY, March 25 - 3:30 p.m.
Brownie Group.

WEDNESDAY, March 26 - 8 p.m.
Lenten Service: Dr. Herbert Ge-
zork of the Andover-Newton The-
ological Seminary in Mass. Dr.
Gezork is a world traveller, the
latest being to Russia as an ob-
server of religious conditions in
that country. This is his fourth
visit during our five years of
Lenten Services.

CHRISTIAN SCIENCE SOCIETY,
Delmar.

SUNDAY-11:00 a.m. Church
Service & Sunday School.
Masonic Temple, Kenwood Ave.

TESTIMONIAL MEETINGS: Every
Thursday at 8 p.m.

**DELMAR PRESBYTERIAN
CHURCH,** Rev. George H. Phelps.
Sunday Services are held in the
Delmar Masonic Temple, Kenwood
Avenue and Adams Street

SUNDAY: 9:15 a.m. Worship and
Church School through Grade 6.
Nursery care for children under
3. 5 p.m. Junior and Senior High
Youth Fellowship with supper
each week. Also Church School
classes, worship and fellowship
program. 7:30 p.m. Adult Bible
Study course at 25 Roweland
Avenue. Teacher: Dr. Theodore
G. Brown.

FIRST METHODIST CHURCH,
Kenwood Avenue, Delmar - Rev.
Arthur P. White. Douglas C.
Smith, Associate Minister.

THURSDAY, March 20 - 10 a.m.
WSCS Lenten meeting: "The
Meaning of the Cross;" leader:
Rev. Arthur P. White.

FRIDAY, March 21-7 p.m. Mr. &
Mrs. Club meeting: the movie:
"The Miracle of Love," will be
shown.

SUNDAY, March 23-9:30 and 11
a.m. Church School and Divine
Worship. Mr. White will speak on
"What Shall We Believe About
the Holy Spirit?" 7:30 p.m. The
Chancel Choir and Youth Group
will present: "The Requiem" by
Faure, under the direction of
Mary Richard Krause, organist
and choir director. Soloists:
Mrs. John Clark, Mrs. Lyle
Schoenthal, Robert Darrone and
Richard Krause. Violinist, Mrs.
Carl Baumbach.

THURSDAY, March 27-9:30 a.m.
Coffee time; 10 a.m. WSCS Lenten
meeting. Leaders, Miss Clara
Bragdon and Mrs. John Thomas.
Topic: "Easter."

**SO. BETHLEHEM METHODIST
CHURCH,** So. Bethlehem. L.
Wayne Dunlap, Minister.

THURSDAY, March 20-1:10 p.m.
Weekday Class of Religion; 2:40
p.m. Junior Choir rehearsal; 8
p.m. Senior Choir rehearsal.

FRIDAY, March 21-5-7:30 p.m.
United Nations Buffet Dinner.

SUNDAY, March 23 - 9:30 a.m.
Church School; 11 a.m. Morning
Worship, "God, the Comforter;"
7 p.m. Intermediate and Senior
MYF.

MONDAY, March 24-7 p.m. Boy
Scouts.

TUESDAY, March 25-7 p.m. Ex-
plorer Scouts.

WEDNESDAY, March 26 - 4 p.m.
Confirmation Class.

JERUSALEM REFORMED CHURCH,
Feura Bush - Rev. Arthur P. Hom-
berg, Pastor.

SUNDAY-9:30 a.m. Sunday School;
10:30 a.m. Worship Service; 7
p.m. Youth Fellowship.

MONTHLY-8 p.m. Ladies' Guild,
1st Monday; 2 p.m. Ladies' Aid
Society, last Thursday; 8 p.m.
Sunday School Teachers & Offi-
cers meeting, last Tuesday; 8
p.m. Consistory Meeting, last
Monday.

CLARKSVILLE REFORMED CHURCH
on Delaware Turnpike, Clarks-
ville, Rev. Charles W. Smith,
Pastor.

SUNDAY Morning Worship: 9:45

GLENMONT COMMUNITY Church
(Reformed) will unite in Worship
Services temporarily with the Re-
formed Church of Bethlehem, 11
a.m. each Sunday.

ST. THOMAS CATHOLIC CHURCH
Delaware Avenue, Delmar - Msgr.
Raymond F. Rooney.

SUNDAY MASSES (In the Church)
7, 8, 9, 10 & 11 (High Mass).
(In the Auditorium) 9, 10 & 12
noon.

WEEKDAY MASSES: 6:45 & 7:30.
SATURDAY MASSES: 8 & 9.

THERE is Nursery care each Sun-
day for pre-school children at the
school during the 10 & 11 o'clock
Masses.

ALBANY BIBLE INSTITUTE,
281 State Street, Albany.

SUNDAY: Service at 4 p.m. Guest
speaker.

THURSDAY: Popular Bible Class
at 7 p.m. except holidays.

**FIRST METHODIST CHURCH OF
VOORHEESVILLE,** Rev. Walter
Taylor, Pastor.

SUNDAY SCHOOL- 9:45 a.m.
WORSHIP SERVICE- 11 a.m.

ONESQUETHAW Reformed Church,
between Route 32 and Clarksville.
Rev. Arthur Homberg, Pastor.

SUNDAY: 11 a.m. Church School;
12 Noon-Worship Service.

COMMUNITY METHODIST Church,
Slingerlands, Rev. James R.
Rhodes.

THURSDAY, March 20-7:30 p.m.
Boy Scouts & Explorers.

SUNDAY, March 23 - 10:30 a.m.
Morning Worship, Sermon: "Rise,
Shine, Give God the Glory."
Nursery Service for tiny tots at
Fire Hall. 10:30 a.m. Church
School. Grades through Kinder-
garten cared for at Fire Hall.
Grades 1-6 worship in Sanctuary
with parents, then go to classes
following children's sermon; 4
p.m. Preparatory membership
class; 4:30 p.m. Junior High
Youth Fellowship; 7 p.m. Senior
High Youth Fellowship.

MONDAY, March 24-7 p.m. Trus-
tees meeting; 8 p.m. Official
Board meeting.

WEDNESDAY, March 26 - 4 p.m.
Cherub Choir; 6:45 p.m. Junior
Choir; 7 p.m. MYF Worship Com-
mittee; 7:30 p.m. Pastor's even-
ing office hours; 7:45 p.m. Senior
Choir.

THURSDAY, March 27-5:30 p.m.
Boy Scout Pancake Supper in
Fellowship Hall. Public invited

Schnurr & Wood

Feeds - Seeds - Fertilizers
Hardware & Garden Supplies

Carmote Paints

WATER SOFTENING SALT
WILD BIRD SEED
SUNFLOWER SEED

We Deliver Delmar 9-1878

TELEPHONE
76-8-2143

SPOTLIGHT CLASSIFIEDS

TELEPHONE
PO-8-2143

CLASSIFIED

BUSINESS SERVICE

BABY SITTING

EXPERIENCED baby sitter wants extra work any evening except Thursday. 75¢ per hour. Call PO 8-2143.

EXPERIENCED baby sitter wants extra work day or evening. 9-1092

BOAT REPAIRS

SEE US for your Spring Setting-out and repairs of your outboard boats. Hudson River Boat Repair Company, So. Bethlehem. RO 7-3443.

BULLDOZING, GRADING

CELLARS, ponds, grading, etc. Fill, shale and top soil. Jim Salisbury. Call E. Berne 81-J3.

JOHN Deere crawler, blade and power winch, grading and back fill. 5-4609.

FIREPLACE WOOD

FIREPLACE wood. 9-2072 after 6 p.m. or Saturday.

FLOORS

FORMICA and linoleum tops; in-laid linoleum floors. Sales and installation. 9-3190.

LAUNDRY

CLOTHES washed, dried, 15¢ lb., ironing, piece or hour. 2-8808.

PAINTING & CARPENTRY

FRANK SALISBURY, General Contractor. Interior and exterior painting, carpentry. Bailey Ave., Delmar. 9-1355.

PAINTING and/or PAPERING

ARTHUR J. Armstrong, general painting and paperhanging. Call UN 1-8720.

PARTY DESSERTS

ULTIMATE in Party Desserts: Schrafft's Ice Cream. Plaza Phar.

PHOTOS

PASSPORT, chauffeur, identification pictures. No appointment. Schellhaas, Dela. Plaza. 9-1472

CLASSIFIED

BUSINESS SERVICE

SEWING

EXPERT alterations & drapes, done your home or mine. 8-4667.

SEWING machine repair. 9-4898.

TRUCKING, LIGHT

WE MOVE: Pianos, Freezers, Refrigerators, Stoves, Furniture, etc. Ken Lake, 9-4424 or 9-3297.

TRUCK FOR RENT

TRUCK for rent: 1½ ton rack with dump, \$1.50 per hr. plus 5¢ per mile. 9-3190

MERCHANDISE FOR SALE

ROSE divan and chair in very good condition. 9-4876.

SLIGHTLY used Western saddle and bridle, hand carved. \$200. 9-2580.

ITALIAN wood record cabinet; green velvet rosewood love seat and 2 matching chairs, perfect condition; pedestal stand; oil painting. 89-4050.

POLAR bow made by Bear, with quiver, target & stand, includes some arrows, brand new, was \$75 - take \$40. 8-4238.

TWO maple beds, twin size, one \$15, other \$5; box spring, \$10. 9-1926.

LIGHT oak wheel chair, cane back and seat, was \$75, sell for \$15. RO 7-3395.

WHEEL chair, very good condition - cost \$79, sell for \$35. 89-0369

DORMEYER elec. mixer w/attachs. \$10; baby bed, \$10; stroller, \$4; teeter-babe, \$3; Hi-chair, \$5. 9-4591.

WHITE 30" sink, chrome faucets, \$10; garden duster, \$5. RO 7-3024.

3/40-gal. hot water tanks, like new - 9-1517.

HEIL conversion oil burner, complete with stack control & thermostat, gd. cond., reasonable. 9-693 after 6 p.m.

SIX golf clubs & bag, \$10. 9-2693

DROP-leaf modern walnut table, like new, cost \$125, sell \$50; dining room light fixture, \$2. 9-3350.

40" Gibson electric range, good condition, \$50. 9-2831 after 6 or weekends.

AMATEUR radio station, including Hallicrafter SX-71 communications receiver, transmitter, spare parts, multimeter and complete correspondence course in radio electronics. Good chance to start a boy in rewarding hobby. THE WORKS, \$150. 9-2888.

1957 Albany City Directory. Call 3-2626.

MERCHANDISE FOR SALE

MOVIE Projector, 16 mm., complete with speaker, excellent condition, recently overhauled, \$100. 3-3183.

7.35 Mannlicher Carbine, sporterized, gd. cond. 9-1096.

KITCHENETTE set, 5 pc., \$15. 8-4238.

ANTIQUE pine fireplace bellows, \$20; new truck chains, 6:00x16-6:00x17-6:50x16, \$10; Warehouse hand truck, \$10; International truck, flat box or 1½ ton rack, \$750. 9-2667.

CAMERA: Bosley B II with case, flash, filters, \$20; Weston II exposure meter, \$12; 9-4754 after 6 p.m.

R. C. ALLEN adding machine & cash register, 1 yr. old. 9-832.

THREE prs. floor-length drapes, chaiseuse with print, 2 mos. old, \$12; twin bed coil spring, \$5; Sohmer clarinet, perfect, make offer. 9-2736.

SUNBEAM waffle iron, \$10; 2 (1 new, 1 used) card display units, both for \$15; large plywood storage cabinet, \$15. 2-3301.

TV, 1957 Hotpoint console, 21", mahog., prac. new, reasonable. 9-3233.

THAYER baby carriage, good, \$15. RO 7-2633.

GE Filter Flo auto. washer, 12-lb. capacity, reasonable. 2-1040.

UPRIGHT vacuum, \$8; Carpet sweeper, \$2.50; ship model, reasonable. 9-4414.

BLACKSTONE fully automatic washer, 1958 model, cost \$369, sell for \$225. Reason: We are moving. Call after 6 or all day Sunday: PO 8-2616.

MAGIC Chef gas range, excellent, \$35. 9-2447.

NEW GE Coffee Maker, used twice. 62-2755 after 5 p.m.

EASY Spindryer washer, reasonable. 8-0350.

MERCHANDISE WANTED

DISC for Garden-Aid tractor, reasonable. 9-2075.

CORNER China closet, glass doors top, closed bottom. 9-3529.

BIKES FOR SALE

GIRL'S 24" bike, \$7. 9-1926.

LARGE girl's bike, \$10. 9-2693.

PETS FOR SALE

BEAGLE, 3 mos., gd. with children. 9-1721.

BOATS & ACCESSORIES

10 H.P. Johnson outboard motor, \$25; 1½ H.P. Neptune outboard motor, \$10. 9-1517.

BRAND new 3½ hp. Scott-Atwater motor for boat, asking \$100. 9-3568.

HELP WANTED FEMALE

FILE CLERK: Experienced. Must be high school graduate. Permanent position. Salary, employee benefits, pleasant working conditions, across from Plaza. Hours 8:00 to 4:30. Write Post Office Box 511, Albany, N.Y.

HELP WANTED Male-Female

WANTED-Part time occupational therapist. 9-1170.

SITUATIONS WANTED

14 yr. old boy wants work cleaning yards, cellars, what have you? 9-3410 after 3 p.m.

LOTS FOR SALE

LOT for sale. Glenmont, East Wiggand Drive. 9-3304.

ROOMS FOR RENT

ROOM for rent, on bus line, large. 9-3309.

ROOM, large pleasant, private bath, convenient. 9-3527.

REAL ESTATE WANTED

REAL ESTATE sells faster with concentrated selling! LISTING YOUR HOUSE?

Contact
KNAUF AGENCY
Mrs. Moylan 9-4848

AUTOMOTIVE FOR SALE

'54 Chev. convertible, \$795. Call 9-3363.

'54 Chev. Bel-Air 4-dr., power glide, R&H, 33,000 miles. 9-1069

-CLASSIFIED ADVERTISING-
Percentage Ads

GENERAL MERCHANDISE are only ads taken on percentage - NO established businesses, PLEASE! 10% on sales \$1 to \$101 - 5% \$102 to \$501 - 2% \$502 up. The MINUTE you sell an article, CALL US. These ads run for THREE weeks. Do NOT advertise elsewhere during that time. (NO used clothing accepted on % basis!)

-Paid Classifieds-

All other classifications are accepted at 10¢ per word, \$1 minimum, payable in ADVANCE.

-Closing Deadline-

Thursday, ONE WEEK prior to publication.

-PAYMENTS-

Mail: Spotlight, Delmar, N.Y. Leave at: PLAZA PHARMACY

MRS. WILLIAMS SHOWS "SETTING HENS"

Currently on display, in the main lounge of the Delmar Public Library are some rare specimens of early "hens-on-the-nest" from the collection of Mrs. Harold E. Williams of Delmar. Mrs. Williams has been collecting American and continental "setting hens" for about 10 years. She has about 100 pieces in her collection, ranging from the early American Parian ware hens to English Staffordshire, French Limoges and German Dresden.

The largest "hen" in Mrs.

Williams' collection is a colorful Staffordshire piece and one of the rarest and most valuable is a black opaque glass piece. A large milk-white "hen" is included in the exhibit and it has the original painting of small rosebuds over the entire piece. Pieces from Vermont, West Virginia and Massachusetts are being shown. Some of the pieces are ornate and were used as ornaments only; others are pieces that were strictly utilitarian in the early days.

There's a special subscription rate for the Spotlight (for a limited time) of \$2 for 3 years. Take advantage of it and save \$1 today!

AIRWAY MOTORS**Bill Lang Family Special**

1955 CHRYSLER WINDSOR Sedan - Fully Equipped. We sold & serviced this car. Has ONE YEAR bond.

Special \$1189.

SEE BILL LANG

CHRYSLER - PLYMOUTH - IMPERIAL DEALER
RENSELAER, NEW YORK 4-2183

If this Town votes to have fluoridation, they should be told the price tag. So the Pure Water Association of Bethlehem asked for and received a cost estimate from Mr. J. D. Brown, chairman of Water District No. 1, Town of Bethlehem. Cost for first year and installation \$8,922.00. After that, \$5,122. a year.

The way we figure, it will cost the Town \$8,922.00 the first year and the children will use \$44.61 worth of it. After that it will be cheaper. The taxpayers will continue to pay \$5,122.00 annually and the children may use \$25.61 worth, if they drink water instead of milk and orange juice.

Repair bills for meters or equipment (that don't seem to like the fluoride any better than some of us do) are not included in these figures.

For less than a dollar a year parents could furnish their children with a better grade of medicine and we would all be free to choose our own method to grow better teeth.

We strongly recommend you vote "No" at the informal poll at your Fire Hall on Saturday, March 22. Don't forget to
VOTE NO

WHY WASTE TAXPAYERS' MONEY

LET US KEEP OUR "NEW" BETHLEHEM WATER SUPPLY PURE

99.97% OF FLUORIDE PLACED IN WATER IS WASTED

FOR THOSE WHO WANT FLUORIDE! IT CAN BE PURCHASED FOR INDIVIDUAL USE AT YOUR DRUGGIST

WHY COMPEL OTHER TAXPAYERS (TO WHOM "FLUORIDE" IS HARMFUL) TO PURCHASE SPRINGWATER FOR PERSONAL USE

LET US BE FAIR

NO MASS MEDICATION

VOTE "NO" ON FLUORIDATION

YOUR VOTE IS IMPORTANT - BE SURE AND VOTE

SATURDAY, MARCH 22, 1958 9 A.M. TO 8 P.M.

DELMAR FIRE HALL ELSMERE FIRE HALL SLINGERLANDS FIRE HALL

Signed - PURE WATER ASSOCIATION of BETHLEHEM

**Interstate
STEAM CLEANING
Service, Inc.**

**All Kinds of High Pressure
Steam Cleaning Done
MOTORS OUR SPECIALTY
We are authorized Hypressure
Jenny Distributors**

Phone 9-2666

7 Grant Street, Elsmere

DELMAR THEATER

**Fri-Sat-Sun - March 21, 22, 23
Joan Collins Richard Burton**

SEA WIFE

-PLUS-

**GUN BATTLE AT
MONTEREY**

with Sterling Hayden

Cartoon - Sat. Mat. Serial