

## COMMUNITY AMBASSADOR LETTER

This is the first in a Summer-long series of letters written by Betty Tinney, our Community Ambassador, to Spotlight readers.

### The Spotlight:

The time has finally come for me to leave Delmar after three months of preparation. It seemed as though the time would never come! From that wonderful moment in March when I first discovered that I would be your community ambassador, I have been busy getting things in order for my ten week stay in Germany. One of the first things I had to do was to write a letter to my German family and fill out several forms in German. Following this I made a number of trips to the doctor where I received shots against every possible disease. I was beginning to feel like a human pin cushion by the time the last fearsome looking needle was aimed in my direction! Getting my shots was just the beginning of my injection period, though, for I was then confronted with volumes of material on German history, customs, and people that all had to be read. Of course I had to work on my German, too, and I found that preparing for my trip was an education in itself. I am finally done with my preparations, however, and it is time for me to embark.

The next two months will be a wonderful experience for me and for you whom I am representing, too. Every week I will write you all a letter so that you may share my adventures and discoveries with me. I know we will have a wonderful summer together, and I will be anxious to see every one of you when I return in the fall.

Aufwiederssehen!

Your Community  
Ambassador  
Elizabeth J. Tinney

## School Property Traffic Rules To Be Enforced by Police

Here are rules for the control of traffic on school property, as adopted by the Board of Education of Central School District No. 6 of the Towns of Bethlehem and New Scotland, Albany County, N.Y. on June 17, 1958.

1. These rules shall apply to all operators, occupants and/or owners of motor vehicles or motorcycles, as defined by the vehicle and Traffic Law, within the confines of any real property owned and used, or owned and held for future use by the school district for athletic, educational or recreational purposes.

2. Operation of such motor vehicles or motorcycles shall be permitted only upon improved roads, driveways and parking areas. Driving, parking or standing on sidewalks, lawns or athletic fields, or areas held for such uses is expressly prohibited.

3. The maximum rate of speed permitted shall be fifteen miles per hour, except that no motor vehicle or motorcycle shall be operated within a distance of twenty five feet from a pedestrian or a parked school bus at a greater rate of speed than five miles per hour.

4. Parking or standing of such motor vehicles or motorcycles shall be permitted only in designated parking areas. When individual parking spaces are indicated by signs, barriers or pavement markings, vehicles must be left in position to conform with such signs, barriers, or pavement markings.

5. Where "Entrance" or "Exit" signs have been posted or placed at access points on public highways, the direction of traffic must conform thereto. A full stop is required before entering upon any public highway.

6. The operation of a motor vehicle or motorcycle on driveways or parking areas in such manner as to cause it to slide, slip, swerve, skid or veer from side to side is expressly forbidden at all times, as is the re-

(Continued on Page 11)

## 32-MEMBER ADVISORY COMMITTEE WRITES REPORT ON EDUCATIONAL NEEDS FOR NON-COLLEGE STUDENTS

A more adequate high school program for students not going to college has been recommended to the Bethlehem Central District Board of Education by a 32-member citizens committee on educational program needs. The group, a subcommittee of the Citizens Advisory Committee on School Expansion, also recommended the addition to the existing high school building of classrooms and special teaching facilities to meet the expected increase in enrollment from 598 at present to 850 in 1962 and to 1,080 in 1968. Existing facilities are designed for 550 students.

In a 15-page report, copies of which are available to interested residents of the district, the committee members reported the conclusions reached after intensive study of the strengths and weaknesses of the present program, in weekly meetings over the past 7 months.

"By coincidence, under the stimulus of world event," the report noted, "the nation has been engaged in close examination of its entire education program during the time the committee was deliberating. The numerous and often conflicting opinions expressed by people of national repute, as well as the public at large, in regard to a possible necessity for modifying educational programs, particularly in the fields of science and mathematics, have had their effect on the thinking of the committee.

"In view of this committee, much of the criticism made of American education in general does not apply to this school. The courses offered, the high standards of performance imposed on all students commensurate with their abilities, the attitude on the part of the faculty that programs are adapted to fit the needs of the students rather than the students to pre-

conceived programs, are noteworthy aspects of a highly commendable program."

In the fields of mathematics and science, the committee found, the school's program is strong in its content, its standards and in the high percentage of students taking courses and full three-year sequences. The need exists, however, to provide opportunities for more advanced courses in mathematics and science, and the committee recommended to the Board of Education that this need be kept in mind in the planning for additional classroom and laboratory facilities.

In approaching its recommendations on other areas of the program, the committee noted that the growth in enrollment "will bring problems and opportunities." A larger student body will make it economically feasible to provide increased subject offerings and to employ teachers with special abilities and interests in various fields. This applies particularly to the program for students who do not plan to go to college, described as "chief challenge to this district." To explore ways of meeting this challenge, the report recommended appointment of special committee to study local needs, exploring cooperative programs with neighboring school districts promptly increasing supervised work study programs, and inviting expert consultation on trade and technical education from the Vocational Education Division of the State Education Department.

In addition to general classroom and laboratory shortages, the committee found serious inadequacies in the facilities for music and art instruction. In physical education, where enrollment will make two additional teaching stations necessary, it was recommended that the need be met with a small gym, divided by a movable partition.



On your vacation, relax with the assurance that your house and belongings back home are insured by

# ROSE & KIERNAN

INSURANCE AND SURETY BONDS  
163 DELAWARE AVENUE, ELSMERE, N. Y.  
Opposite Delaware Plaza Shopping Center Phone 9-4961

## SUMMER



- ALL Electric Razors 25% OFF
- ALL Cameras 20% OFF
- ALL Parker "51" Pens 1/3 OFF

## THE CARROLL PHARMACY

PRESCRIPTION SPECIALISTS

4 Pharmacists  
Arthur Starman PhG. William R. Warner B.S. Phar.  
Albert D. Warner PhG. Joyce Nautel B.S. Phar.

372 Delaware Avenue, 4 Corners, Delmar - Phone 9-1769  
FREE DELIVERY



## GOIN' PICNICKING?

See us - We have a full line of

- ◆ Picnic Tables
- ◆ Electric Barbecues
- ◆ Hot & Cold Thermos Jugs
- ◆ Scotch Grills
- ◆ Hang-It-All Grills
- ◆ Barbecue Line of -Paper Plates, Cups, Napkins

**ALL ROSE BUSHES 1/2 PRICE**

# Glenmont Garden Center

On 9-W at the Corner of Bender Lane

A. H. AIREY PHONE 5-8575 MICHAEL ESSEX

# IS EUROPEAN EDUCATION BETTER?

BYRON S. HOLLINSHEAD

This article is reprinted from the EDUCATIONAL RECORD of April 1958 by permission of the American Council on Education.

### PART III

The real questions are far different ones. Agreed that we need to improve American secondary education in all respects as much as we can, the questions are: What should be the minimum knowledge of mathematics and science we might expect students who do not go to college to have? What knowledge should the student who goes to college but is not expecting to major in mathematics or science have? What knowledge should the student who is expecting to continue

these studies in college have when he enters?

Obviously what is necessary is to differentiate these studies in the high school so as to deal properly with these three general categories as well as variations of them. American educators have been saying this for years and practicing it insofar as their budgets would allow. Because of the small proportion of European students in secondary school, nearly all of them preparing for the university, the Europeans have not had the same need to differentiate by abilities and interests. However, in the future as a higher proportion of their students have an opportunity to attend secondary school and college, Europeans will face the same problems we now have. While the analogy is not perfect, they are also going to find that their road system will become more complicated and expensive when a higher proportion of their people have automobiles.

What worries me on the subject is what is either an unscrupulous or an unsophisticated use of statistics. May I illustrate. A columnist in a reputable news magazine says that in 1900, 56 percent of American high school students took algebra and in 1949 this percentage had decreased to 27. Then he quotes approvingly of someone who speaks of this as a de-emphasis of mathematics. But these percentages are of pupils in school, and in 1900 the percentage of the age group in

For the BEST in GOOD Foods

## DELSMERE

FOOD MARKET

449 Delaware Avenue  
Opp. Delmar Grade School

GOV'T. INSPECTED & GRADED  
U. S. CHOICE

## MEATS

Your assurance of  
BETTER QUALITY

A Family Treat!

Our Own Sugar Cured

## CORNERED BEEF

Made from U. S. Choice Beef  
It's DELICIOUS!

MIRACLE WHIP qt. 47¢

NEW LOW PRICE  
Shurfine COFFEE lb. 79¢

Top Quality Blend with  
Excellent Flavor

(Ground FRESH to your Order)

For Better Complexion  
DOVE'S SOAP 2 lg. Bath size 37¢

Sale Ends Saturday, June 28  
Quantity Rights Reserved

Our Readers include the people who live in:

- |                 |                  |
|-----------------|------------------|
| Delmar          | Elsmere          |
| Slingerlands    | Voorheesville    |
| New Scotland    | New Salem        |
| Westerlo        | Rensselaerville  |
| Glenmont        | Van Wies Point   |
| Faura Bush      | Clarksville      |
| Unionville      | Meads Corners    |
| South Bethlehem | Selkirk          |
| Ravena          | Lawson Lake      |
| Beckers Corners | Bethlehem Center |
| Cedar Hill      | South Albany     |

SPOTLIGHT is published by Spotlight, Inc., 187 Rowland Avenue, Delmar, New York; Charles E. Walsh, Jr., President; Tracy F. Walsh, Secretary-Treasurer. Mailing Address: Delmar, New York.

school was not only very small but also, in most secondary schools, only the college preparatory course was offered. The only statistics which mean anything in this context are the percentages of the secondary school age group studying algebra in 1900 compared with 1949.

Since the percentage of the age group in secondary schools increased by almost ten times from 1900 to 1949, the correction needed in these statistics is quite startling. If the percentage of those in the pupil body studying algebra decreased by 50 percent in those fifty years, and at the same time the percentage of the pupil to the total body group was multiplied by ten, then the percentage of the secondary school age group studying algebra increased by five times.

But there is an even larger question than faulty statistics. It is, why should everybody pursue algebra, physics, and chemistry? There is very good psychological evidence to show that not much more than 25 percent of the population have any high degree of ability in the abstract thought which advanced work in mathematics, physics, and chemistry requires. If this be so, why must everybody study these subjects? Must everyone play the piano, or play football? Granted that a knowledge of arithmetic and general science is essential, how far beyond that are low-ability students supposed to go, or, indeed, can they go? Science and mathematics courses, at least as now taught, are usually designed to be sequential - brick on brick. For those who continue, there is finally a real structure of knowledge. Those who do not continue may simply possess some loose bricks.

Again, suppose the individual has high ability, but he wants to paint a picture, sing an opera, write a book, or be an anthropologist. Why must even the

gifted who do not expect to specialize in mathematics or science master these subjects beyond the point required for intelligent citizenship? The article I referred to earlier says that "when a Russian graduates from high school he had had five years of physics, four years of chemistry, one year of astronomy, five years of biology, ten years of mathematics and trigonometry, and five years of a foreign language." I don't know what percentage of Russians graduate from high school. Evidently it is very small. But if this is the educational diet of the Russian student I think we need have no great worries. He will be a lopsided fellow indeed and I should think he would be consumed with irritation and frustration because of the imbalance of his studies. In all seriousness, is there anyone with even a modicum of knowledge about education who thinks that we should imitate such a curriculum. Or, to put it differently, is this a curriculum which prepares for citizenship in a modern democracy?

Just as I hope my comments about foreign languages will not be misunderstood, I hope these observations about mathematics and science will not lead to misunderstanding. A modern society such as our has increasing needs for people well trained in mathe-

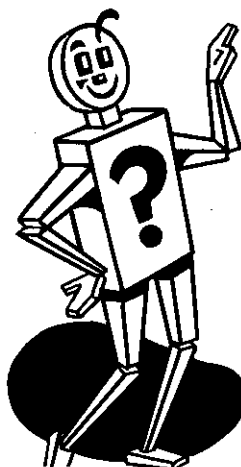
Our Fresh-Picked  
**STRAWBERRIES**  
Are Ready!

**WALLEY'S**  
FARM INC.  
924 New Scotland Rd.  
2-0513

**ROOFING!**

ALL TYPES - ALSO SIDING, REPAIR - UP TO 30% SAVINGS  
Phone 9-1563 - Free Estimates - Fully Insured - Phone 9-1563

**MACK'S HOME IMPROVEMENT Co.**  
New Scotland Avenue and Route 32 in Feura Bush  
(Lowest possible prices consistent with the best in materials and workmanship)



FROM TIME TO TIME  
YOU'LL SEE MY FACE,  
SOMEWHERE IN THIS  
NEWSPAPER'S SPACE

FIND OUT ALL ABOUT ME  
ON PAGE 11

**Delmar**  
LUMBER & BUILDERS'  
SUPPLY, INC.

Phone 9-968 WE DELIVER 340 DELAWARE Ave. Delmar, N. Y.

PAINTS · HARDWARE · LUMBER · MASON SUPPLIES · ROOFING · INSULATION

# 3 BIG REASONS (✓)

for heating your home with oil

(✓) IT'S SAFE

(✓) IT'S CHEAP

(✓) IT'S SURE



When you heat your home with oil, you enjoy advantages provided by no other form of fuel.

First, you have the peace-of-mind that comes with the knowledge that your heating unit is safe. Second, oil costs so little. Third, you are assured a steady, reliable level of heat no matter how low the temperature drops!

Call us for Atlantic's famous triple-refined heating oil. It now has a new additive that helps prevent formation of sludge.

Call 5-1433  
**REDMOND & BRAMLEY**  
OIL COMPANY, Inc.

**BUSINESS & PROFESSIONAL**

**Telephone Exchange**

72 Delaware Avenue

24-hour Service 9-3524

**LAWN MOWERS SHARPENED**

Pickup-and Delivery

**Taylor & Vadney, Inc.**

303 Central Ave. 4-9183  
Hours: Mon. 8-5, Tues. thru Sat. 8-9

**Schnurr & Wood**

Feeds - Seeds - Fertilizer  
Hardware & Garden Supplies

**Carmote Paints**

WATER SOFTENING SALT

We Deliver Delmar 9-1878

**EDUCATION**

(Continued from Page 3)  
matics and the natural sciences. Without such persons it cannot exist. We do need to improve our teaching in mathematics and science. We need to have a richer offering of courses in large high schools and solid courses in small high schools which are now neglecting these subjects. Above all, we need to encourage by every possible means those who are interested and talented in mathematics and science to go on with their studies. But this does not mean that we should try to force everybody into a similar educational mold.

When you purchase an article advertised on these pages, tell the merchant about it. He will be happy to know that his ad has been read.

**TRI-VILLAGE**



HIGHLIGHTS

By The Sage of Magee Field

**All Star Game: June 28**  
This Saturday evening, June 28 at 6 p. m., the 1957 Little League All Stars will meet the 1958 All Stars at Magee Field. This annual game will bring back such 1957 stars as Dick Olson, Pat Tuzzolo, Jack Terwelp and Rusty Freeman who are now playing in the Babe Ruth League. The regularly scheduled game between Patterson and Main Brothers has been moved up to 3 p. m.

**Notes of the Game:**  
Besides the rules governing the use of pitchers, the other major differences between Little League rules and regular baseball rules concern base-running and the actual layout of the baseball field.

In contrast to regular baseball rules, in Little League the batter is out on the third strike whether the catcher holds on to the ball or not. In the case of a foul tip on the third strike the catcher must hold onto the ball, however. Also the base runner may not take a lead from any base once the pitcher has taken his stand on the rubber and the catcher is in position to catch. If a violation is made a play can be made on the runner. If he is put out, the out stands. If he advances safely, he is forced to return to the base.

As far as the general layout

of the field the Little League dimensions are about two-thirds those of a regular baseball field. The distance between bases is 60 feet instead of 90 feet. From the pitcher's mound to the back of home plate it is 44 feet instead of 60 feet 6 inches.

**Game of the Week:**  
The temperature was hovering around 40 degrees at Magee Field last Tuesday; however, the

*Before you put your woolen blankets away--*

Be sure they are immaculately clean and sanitary. Never store a blanket for the Summer until all soil and odors incident to Winter usage have been completely eradicated.

**Why Killip employs original "woolen-mill" methods**

Despite the fact that we operate one of the most modern dry cleaning plants in the state, we strongly advise against having the delicate fibers of a woolen blanket exposed to dry cleaning solvents by bulk processing. Long experience has demonstrated that individual washing in pure soap and water—the woolen-mill method—gives far more satisfactory results. So we wash all blankets in mild, gentle LUX—the purest soap we can obtain.

Each blanket is slowly dried and gently brushed to restore the nap to a soft, fur-like downiness. This is followed by a moth-proofing treatment and a cedarizing process which imparts a delightful piney, forest-like aroma. Your blanket is then returned to you in a cellophane wrapper, ready for Summer storage. No shrinkage! That's a promise with an unconditional guarantee!

We invite any homemaker to compare a dry cleaned blanket with one processed by Killip's woolen-mill method. No matter how low the cost of bulk processing by dry cleaning, Killip's charge of only \$1.50 will be more than justified.

**ALBANY 5-3311**



76-80 GREEN ST., ALBANY

FREE Pick-up in TRI-VILLAGE and Suburban Areas

**POWER MOWERS**  
Serviced & Sharpened

**L. C. SMITH**

154 Delaware Ave., Delmar

**FLOWERS** for all Occasions



454 Dela. Av  
9-856

NEW SHIPMENT  
**ALL KINDS OF FINCHES**  
**FULLER'S PET SHOP**  
TELEPHONE 9-3309  
Cor. Lincoln & Dela. Aves.

**GENERAL INSURANCE**  
**KATHARINE G. HERRICK**  
AGENCY  
119 McCormack Road  
Slingerlands 9-2763

**SEPTIC TANK AND DRAINAGE SERVICE**  
SEWERS AND DRAINS  
CLEANED ELECTRICALLY  
**TORK & PAFUNDA**  
Voorheesville  
RO 5-7386 RO 5-2784

**REMODELING**  
All Types Of  
**CARPENTER WORK**  
H. A. Ertel Ed. Hehre  
9-1048 9-1198

**REAL ESTATE and INSURANCE**  
**BROWNELL**  
355 DELAWARE AVENUE  
9-4911

PLACE ORDER NOW FOR  
**TOP GRADE TOP SOIL**  
Power Rolling Rototilling  
**LAWNS & GARDENS**  
DRIVEWAY REPAIRS  
**CRUSHED STONE-All Sizes**  
GRAVEL & FILL  
Excavating Grading  
**F. Harris Patterson**  
Incorporated  
100 Adams St. Delmar  
Phone 9-3863

boys played as if it were 90 in the shade. In the short history of Magee Field there have been many excellent games, but the game between Mullen and Main Brothers certainly should be ranked among the best, if not the best game for a long time to come. A spine-tingling, emotion-packed drama of the diamond left the crowd limp with exhaustion. Not a run scored until the last pitch of the game when, with two outs, the bases loaded and a count of 3 and 2, the batter walked to make the Mullen team victorious by a score of 1-0.

There were heroes galore. Number one man of the evening has to be Doug Getz who pitched the first no-hit, no-run game of the year while striking out 13 men. He allowed only one man to reach third base. Only one ball was hit to the outfield, a towering drive off the bat of Ricky La Rose that was caught by Dave Blanchard. Other Mullen heroes were Dave Dennin and Don Moore who combined to run down an over-zealous base runner. And certainly we cannot overlook Bobby Hummel who

scored the only run of the game.

Beaten only by near perfection was Bill Merritt who allowed only one hit, a single to center field by Billy Donahue. Matching Getz pitch for pitch, the south-paw gave the crowd an equal number of thrills. He was backed up by Dave Stewart who handled 7 chances at first base flawlessly and Larry MacArthur who dug a bullet out of the dirt and threw a man out at first.

**LEAGUE STANDINGS**

**MAJOR LEAGUE**

(These standings were compiled at the completion of last Saturday's games)

TEAM	WON	LOST
Mullen	7	2
Main Bros.	7	3
Carroll	4	4
Patterson	4	6
Crannell	4	6
Studler	2	7

**OPTIMIST LEAGUE**

Giants	3	0
BB's	3	0
Cardinals	2	1
Panthers	1	2
Tigers	1	2
Indians	1	2
Cubs	1	2
Pirates	0	3

**ONLY \$328.**

For This Beautiful 7-foot Kitchen!

An Amazing Value!



-INCLUDES: Wall cabinets, base cabinets, Formica top (choose from 60 patterns) porcelain sink with fixtures.

-CONSTRUCTION: Solid doors, magnetic door catches, 12 decorator colors in enamel . . .

or  
Exciting natural wood finishes: Fruitwood, Honey Maple, Cherry, Blonde Maple, Alpine White

Price includes everything as illustrated above

\$5 DOWN

3 YEARS TO PAY

OPEN EVENINGS TILL 9

**Suburban**  
APPLIANCE  
DELAWARE PLAZA  
DELMAR 9-3557

**2 FOR 1 SALE!**

ONE Day ONLY!

SATURDAY, JUNE 28

TWO of anything with ICE CREAM in it for the price of ONE! TWO cones for a DIME! Two BANANA SPLITS for the price of ONE! You name the TWO you want!

**DARI-DELITE**

DELAWARE PLAZA

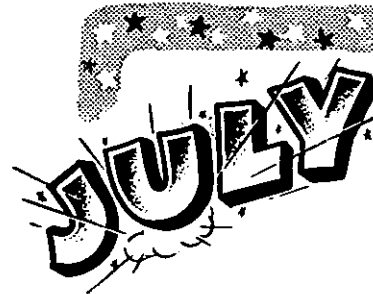
PLENTY OF FREE PARKING

Open Mon. thru Sat. 8 a.m. to 10 p.m. - Sun. 2 to 10 p.m.

The Shelley Players will present three plays for children this summer with a professional cast featured. The first play, ALADDIN AND HIS LAMP, will be presented this Saturday, June 28, at 2:30 p.m.

JUST IN TIME FOR THE

4<sup>th</sup>  
OF



WEEKEND

Just Arrived!

SPECIAL GROUP OF

**COTTONS**

Sizes 5 to 15

\$5.98 each 2 for \$11.

\$8.98 each 2 for \$17.

\$10.98 each 2 for \$20.

SPECIAL GROUP OF  
**SLEEVELESS DRIP-DRY**

Reg. \$3.98

**SHIRTS**

Assorted Whites, Pastels, Stripes and prints

Sizes 10 to 18

2 for \$6.



STORE HOURS: Mon., Tues., Sat. till 9:30 - Wed., Thurs. & Fri. till 9



**SKILLED MECHANICS FOR ALL CARS**

Special 'til End of Month  
**FRONT END Wheel Alignment and Wheels Balanced**

Regular \$12.50 Job **\$9.50** Brakes installed on any late model car, only \$9.95

\*Body & Fender Work \*Motor Repairs

**100% COMPLETE CARE FOR YOUR CAR**

**VET'S BODY SHOP & GARAGE**  
 300 Delaware Ave., Delmar Phone 9-986 or 9-617

**MOBILE LIBRARY EXHIBIT**

The latest thing in mobile libraries will go on exhibit outside the Delmar Public Library on Monday. This is an exhibit bookmobile administered by the New York State Education Department.

It is part of a state plan to encourage improvement and extension of library service in rural areas and is made possible by a grant from the Federal Government.

The idea of a bookmobile is not new to the Delmar Library as their Bookmobile has serviced a wide area for over 2- years. However this exhibit demonstrates new trends, and new mechanical improvements that have been developed in these years.

This new unit has solved the problem of heating the library section as well as the driver's area by radiant floor heat, and a Monolite roof allows for effective natural light and controlled ventilation.

The vehicle on exhibit weighs 23,000 pounds and costs \$21,000.00. It will carry 3500 books to any place that has a road. Included in the exhibit are phonograph records, films, magazines, pamphlets and reference books to give an idea of the wide range of opportunities which can be offered.

**Ralph S. Butler & Sons**  
 Incorporated

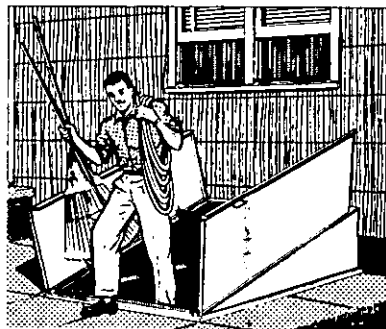
"All Forms of Insurance"  
 252 Delo. Ave., Delmar 9-4581

**CARPENTER CONTRACTOR**

**FRANCIS G. DENSON**

Build it or Repair it  
 General Carpentry - Remodeling  
 Repairs - Custom Cabinets  
 Counter Tops  
 Alterations

43 Lyons Avenue, Delmar  
 Tel. 9-4019



*Easy Come ... Easy Go*

... with a Bilco Door. Insist on it for your new home. Makes the basement useful. Saves tracking through upper rooms. Permits storage of bulky articles. All steel, permanent, weathertight.



AMERICA'S FINEST BASEMENT DOOR

A Bilco is the modern replacement for that old worn-out wood hatchway on your present home.

Call us for free "How-to-install-it" folder, or we can suggest a competent workman

**DELMAR LIQUOR STORE**

Four Corners Delmar  
 Pete & Kaye Jones  
 CALL 9-1725  
 We Deliver

Our Fresh-Picked Home Grown **PEAS** Are Ready!

**WALLEY'S FARM INC.**  
 924 New Scotland Rd.  
 2-0513

**F.F. CRANNELL LUMBER**  
 Since 1849 Company  
 278 Delaware Ave., Delmar Phone 9-927

THE **DEN**

**20% Off**

ON ALL **BRASS** and PEWTER

- Wall Plaques
- Wall Planters
- Candle Holders
- etc.

AT THE FOUR CORNERS  
 Telephone 9-2932 Open Fri. till 9

**General Auto Repairing**

Automatic Transmission Service

Collision Service

Worcester Power Mowers Sales & Service

**HILLTOP Collision Service**  
 14 Grove Street, Delmar  
 PHONE 9-2540

A Subscription to the Spotlight brings you more and more

**TV WASHERS DRYERS DISHWASHERS**

Factory Engineered Replacement Parts

**E. F. MUZZEY, Jr.**  
 SERVICE IS OUR BUSINESS

Channel 10 Antennas Installed for As Low As \$15.95  
 Call 9-3419 24-Hour Service  
 Office: Spore Road, Delmar R. D.

**The Economy Wood Window!**



Removable for easy cleaning  
INDOORS!

**WOODCO GENERAL**

WITH

**LIFLOX**

WINDOW BALANCE

**PLYWOOD**

All Sizes & Thicknesses

**BETHLEHEM LUMBER Co.**

**GLENMONT**

At the intersection of Route 32  
and 144

PHONE 62-2335



EARL K. PINNEY is representing the Bethlehem Lutheran Church as Lay Delegate to the Atlantic District Convention this week at Bronxville. Mr. Pinney was the first President of the church; now, as past President, he is the first official representative of the church to attend the District Convention.

**Joins Airway Motors**

Stanley P. Hemmett, 17 Snowden Avenue, Delmar, has joined the Sales Department of Airway Motors. Mr. Hemmett has been associated with the General Mutual Insurance Company for the past eleven years.



*Vacation Time  
Is Here!...*

Our customers feel better,  
look glamorous, are at ease  
in shorts, bathing suit and trapeze.

*Improve Your Figure Now,  
For Summer Fun*

FREE TRIAL TREATMENT  
Call 62-2354 for Appointment

LOUDON

*Slimline inc.*

Slenderizing Salon

Loudon Shopping Center

Across from Memorial Hospital



**FOR THIS SPECIAL EVENT**

Open Daily 9 to 9 - Saturday 9 to 7

**WIN! WIN!**

in this great twin celebration to introduce RAYCO'S  
2 new modern muffler departments!

**GRAND OPENING SALE**

Dramatic Savings on AUTO SEAT COVERS and  
AUTO MUFFLERS



**VINYSAN® CLEAR PLASTIC  
AUTO SEAT COVERS**

\$30 value  
complete set

**18<sup>77</sup>**  
for most cars

**OROSPUN®  
AUTO SEAT COVERS**

\$20 value complete set

**13<sup>77</sup>**  
for most cars

**TO LAYER ORITEX® CONVERTIBLE TOPS**

\$50 value

**33<sup>77</sup>**

for most cars

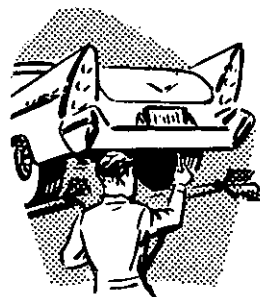
Guaranteed not to leak, crack  
or peel... Guaranteed to look  
and fit like original tops.

**FREE AT RAYCO!** Win a '58 Hillman  
Minx. Nothing to buy! No contest to enter!  
Just register your name at a Rayco Store.  
**FREE GIFTS:** With every purchase of seat  
covers, tops or mufflers, a 22-piece patio  
dinnerware set **ABSOLUTELY FREE!**



See the Hillman Minx at Nemith,  
Latham and Troy.

**GO-POWER**



**MUFFLERS**

**THE ONLY MUFFLERS TO CARRY  
THE UNITED STATES TESTING  
COMPANY SEAL OF APPROVAL!**

★ 15-MINUTE INSTALLATION

★ NO CHARGE FOR LABOR

★ **SAVE UP TO 25%!\***

**BROADWAY IN MENANDS**  
OPPOSITE TROY-MENANDS BRIDGE  
Ph. Albany 5-8151 or AS 2-6582  
**STOP 24, ALB.-SCHEN. RD.**  
One Block East of Mohawk Drive-in Theatre  
PHONE UM 9-6621



# Spotlight Congratulates the Bethlehem Central



**NEED A FAST CAR WASH?**

**TRY THE NEW  
MINUTE MAN**

590 CENTRAL AVE., ALBANY

ONE-OF-A-KIND

**SALE**

Out They Go!

NORGE ELECTRIC DRYER

REDUCED TO **\$145.**

-0-

PORTABLE HI-FI

Reg. \$89.95

NOW **\$74.88**

-0-

NORGE ELECTRIC DRYER

Reg. \$269.95

NOW **\$180.**

-0-

Several other One-Of-A-Kind  
Items - all priced to GO!

DIAMOND NEEDLES \$9.00

(For most Hi-Fi Models)

**WALSH'S**

Record & Appliance Ctr.

154 Delaware Avenue, Delmar

Next to United Cleaners

Triple-S Stamps on every

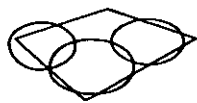
Purchase

PHONE 9-4649

Mon-Fri: 10 a.m.-9 p.m.

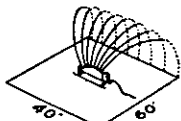
Saturday: 10 a.m.-5:30 p.m.

## DON'T MAKE A MOVE!



**ORDINARY SPRINKLER**

- waters lawns un-uniformly
- spotty small area coverage
- leaves lawn corners dry
- wets sidewalk, passersby
- must be moved frequently
- forms run-offs, puddles



**MELNOR'S  
Swingin' spray**

**MELNOR SWINGIN' SPRAY**

- large rectangular spray
- gets into corners
- adjustable for small areas
- gentle, deeply penetrating
- Perma-Sealed lifetime lubricated motor keeps out dirt

RECTANGULAR  
AREA  
OSCILLATING  
SPRINKLER



## MELNOR SPRINKLERS from \$5.95



**GARDEN from \$4.50**

**HOSE 50 feet**

Light, strong, durable hose—  
doesn't rot, crack or peel, Easy  
to use or coil. Brass couplings.



**HOSE  
NOZZLE**

**\$1.49**

Fine mist to  
full stream—  
controlled by  
hand pres-  
sure. Can be  
locked at  
any spray  
position.



**HOSE  
REEL**

from  
**\$7.50**

Tubular steel  
frame—rolls  
easily—tips  
back for reel-  
ing in. Ca-  
pacity 150 ft.

## SALE DELTOX SUMMER RUGS

Discontinued Patterns

9 x 12  
feet

**\$17.95**

Regular  
**\$22.95**

Only 12 in the lot . . . come early as these will go fast  
at this price. New plaid pattern in attractive color  
combinations of brown and beige, two-tone green or  
black and grey. While they last only . . . . . **\$17.95**

# JOHN B. HAUF, INC.

*"The House of Quality"*

175 Central Avenue, Albany, N. Y.

## HILCHIE'S TERMINAL HARDWARE

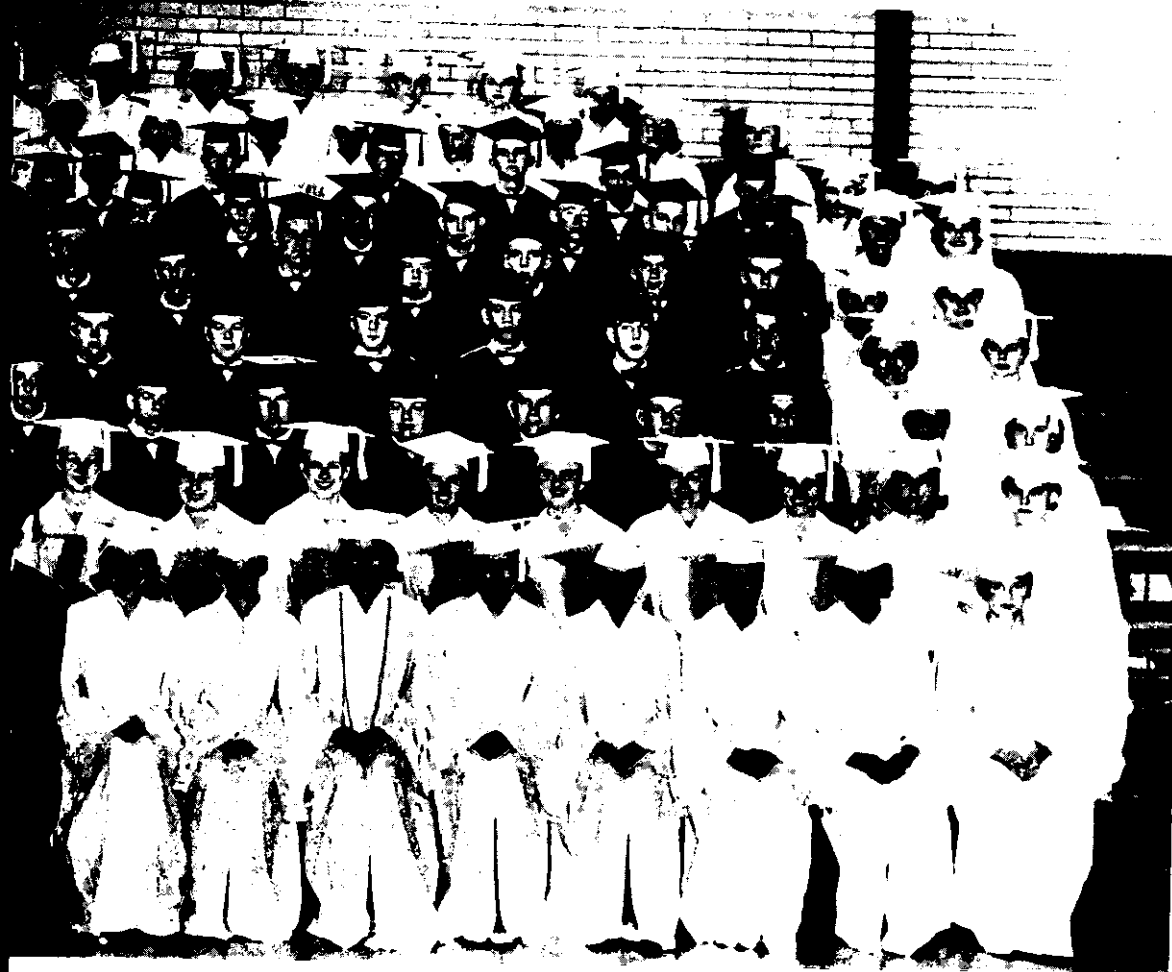
9-3941

Elsmere at the Light

We Deliver



# Senior High School Graduating Class of 1958!



Official Class Photo by Schellhaas

von Bank's  
TV SERVICE  
4-5887

Quality, Responsibility, Honesty

**SAVE 15%  
to 30%**

DON'T DELAY - CALL SHAY

**Roofing Siding**

**Floor, Wall &  
Ceiling Tile**

**Aluminum Doors  
Windows & Siding**

22 Years of Experience

No Down Payment  
36 Months to Pay

First Payment: August 1



**HOME  
IMPROVEMENT  
CO.**

48 Herrick Ave.  
Delmar

**9-2942**

## Summer Services

1. **TRAVELERS CHEQUES** provide a safe way to pay when you're away.
2. **\*A SAFE DEPOSIT BOX** protects the valuables you leave behind.
3. **LOAN SERVICES** to finance your vacation.
4. **BANKING BY MAIL** provides an easy way to make deposits during the summer.
5. Prepare for your vacation next year by opening a **VACATION FUND ACCOUNT** now.

## THE NATIONAL COMMERCIAL BANK AND TRUST COMPANY

\*Delmar Branch 9-4714      Elsmere Branch 9-4132  
Ample Parking Space  
Friday Evening Banking Hours 6-8 P.M.  
(At Delmar Branch Only)  
Member Federal Deposit Insurance Corporation

## THE COACH HOUSE

Route 9-W

Ravena, New York

### *Will Be Closed for Vacation*

From Tuesday, July 1st 'til Tuesday, July 8th

-0-

Our Reservation Clerk will be on duty, during our closing, to take your reservations for Parties or Banquets that are to take place after July 9th.

PHONE RAVENA 8-2762

-0-

**Re-opening for Business Wed., July 9th**

**AS GOOD AS MOM MADE!**

The TOLL GATE in Slingerlands . . . started in forty-nine with one idea in mind - to make ice cream as good as Mom made forty years ago in the old hand-turned ice and salt freezer. Mom made the "mix," Pop turned the freezer and we hung around, anxiously waiting to lick the beater after it was removed from the freezer. Nothing in this wide world ever tasted so good as Mom's Ice Cream! And it's that hauntingly delicious memory that keeps us trying to make our Toll Gate Ice Cream measure up to Mom's.

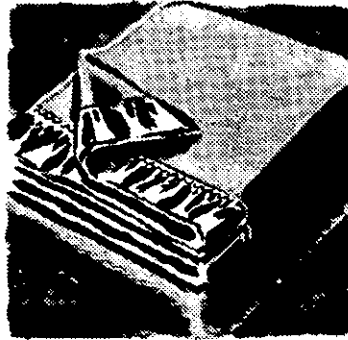
R. E. Zautner

R. N. Zautner



*June*

*Brides* ALL AGREE



that KENWOOD BLANKETS are for me!

**KENWOOD MILLS STORE**

Just across the bridge, Rensselaer Plenty of free parking  
Open daily and Saturdays 8:30 to 5

**LIVING**

**KITCHENS by**

**Spalt**  
DISTRIBUTING CO.

WITH

**HOTPOINT APPLIANCES - WHITEHALL CABINETS**

WHITEHALL, "America's Most Envied Kitchen," can be yours . . . largest selection of custom built, wood kitchen cabinets, featuring solid maple, oak, birch, knotty pine, fruit woods.

NEW HOTPOINT automatic cooking in beautiful new built-ins.

Use our kitchen planning service. We will handle your complete kitchen modernization with all our own trained mechanics. Includes cabinet installation, Formica counter tops, plumbing, tiling.

Attention Contractors: We have been appointed HOTPOINT suppliers for customline built-ins in addition to our fine line of custom-built cabinets. See us for special Quotes and prices.



**COMPLETE REMODELING SERVICE**

PHONE

**2-5411 or 89-5429**

-ESTIMATES CHEERFULLY GIVEN-  
35 WATERVLIET AVE. ALBANY

**Here & There**

To celebrate the First Anniversary of the new fire house in South Bethlehem, the Ladies Auxiliary of Selkirk Fire Co. #3 will have a Baked Ham Supper, family style, for members of Selkirk Fire Co. #3 and Auxiliary on Saturday, June 28, at 6 p.m. at the Fire House.

New officers of the Tri-Village Nursery Pre-School Committee were announced at the recent annual meeting: Chairman, Mrs. E.K. Fretwell, Jr.; Co-Chairman, Mrs. Frank Peckham; Secretary, Mrs. Sherman Gates; Treasurer, Mrs. Alfred Maleson.

Parents of children who will be 3 or 4 years of age by the first of September, 1958 may request applications from Mrs. Sherman Gates, 64 Adams Place, Delmar - 9-2497.

EVERYONE WHO ENJOYS singing and listening to their favorite hymns is invited to Sunday Evening, June 29, at the Onesquehaw Reformed Church. There will be special selections by invited guests and members of the Church, in addition in congregational singing. The program will begin at 7:30 p.m.

Dr. Ralph S. Metheny, Manager of the Veterans Administration Hospital, reported today that several complaints had been received from persons residing in the Delmar-Clarksville area that persons are soliciting from door to door for the purchase of magazine subscriptions, allegedly for patients of the Veterans Administration Hospital and are also asking for donations for activities of the hospital.

Dr. Metheny stated that such solicitations are not permitted by

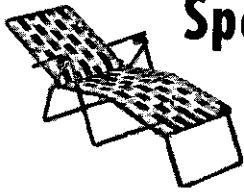
**BUD'S TV SERVICE**  
Route 9-W Selkirk, N.Y.  
PHONE RO 7-2769

**OIL BURNERS**  
**TOUGHER AUTOMATIC HEATING**  
Gas & Oil Fired Installations and Service  
Gas & Electric Glass Lined Water Heaters  
Fuel Oil - Water Pumps  
-24 Hour Service-  
Get our prices and **BE SURPRISED**  
Glenmont Call 5-8450 or 6-0419

We write this Ad each week in rhyme . . .  
With reason to tell you good people . . .  
That here at **MCCARROLL'S . . .**  
Good **CORNED BEEF** is ALWAYS in season!  
**MC CARROLL'S SUPER MARKET**  
SINCE 1921  
272 Second Av., Albany  
**CORNED BEEF**  
Our Specialty

**RUG CLEANING**  
FAST 3-DAY SERVICE ON YOUR 9x12 CARPETS OR LOOSE RUGS, EXPERTLY SHAMPOOED AND RESTORED TO THEIR ORIGINAL BEAUTY, IN OUR PLANT - THE NEWEST, LARGEST RUG CLEANING PLANT IN THE AREA.  
OUR 22ND YEAR  
**LEKTRO KLEEN**  
Now at 27 Sherman St. TEL. 5-7870  
MEYER COHEN, Prop.

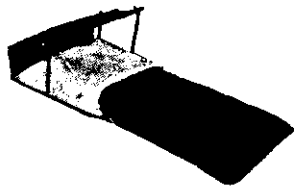
# BRIN'S HOUSEWARES SLEEPING BAG Special



This Sleeping Bag has an outer covering of sturdy water repellent balloon-type cloth; bottom and canopy are rubberized sheeting; bag is Celacloth filled. Size: 36" by 82" and weighs only 4½ lbs.

**\$14.**

# SUMMER FURNITURE Special



The Lustracolor 6-Position Chaise is made by Arvin. Beautiful color, super-strong frame with Saran webbing covering. Weighs only 11 lbs.

**\$17.**

Open Thurs. & Fri. till 9 - Tel. 62-4235

# Brin's

Department Store, Inc.  
Corner Second & Delaware Aves

NIGHTS & SUNDAYS  
Call 62-2875 - Ask for Morris

SUCCESSFUL men with small businesses (and large ones, too!) use the Spotlight BUSINESS SERVICE.

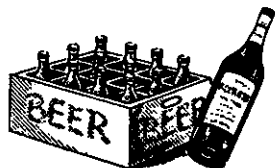
ALL BRANDS OF BEER  
Delivered to Your Home by

# Marko

BEER DISTRIBUTORS Phone 4-5159 or 5-7900

All brands of beer delivered to the home. No extra charge for delivery. Join your neighbors. All satisfied customers. No lugging empty bottles back to the store.

Distributors of Altbrau, Bavarian Style Beer. Also full line of soft drinks and Vichy.



the Veterans Administration and that persons so doing have not been authorized by the Veterans Administration Hospital. Authorities in the area where solicitation has occurred have been asked to discourage these practices.

The Swim Program in the Junior and Senior High Schools of Bethlehem Central School District will open Monday, June 30, for the summer, according to Joseph Guerrero, Director of Health, Physical Education and Recreation. The scheduled program continues through August 24.

9 a. m. to 12 noon, Monday through Friday - Learn to Swim and Stroke Improvement Classes. Life Saving classes during August.

1:30 p. m. to 4:30 p. m., Monday through Friday - Recreational Swimming for children, non-swimmers excluded. (Parents may accompany swimmers).

7 to 10 p. m., Tuesday, Thursday and Friday - Family Recreational Swimming.

2 to 5 p. m., Sunday, at Junior High School Pool.

## SCHOOL PROPERTY

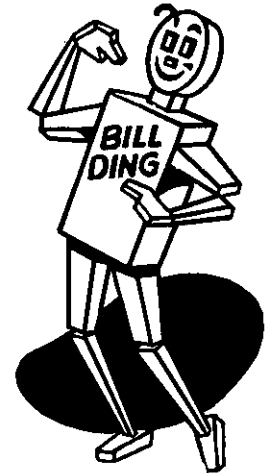
(Continued from Page 1)

peated circling, backing or starting of such vehicles anywhere on school district property.

7. A violation of any of the above rules shall constitute a TRAFFIC INFRACTION and may subject the person convicted thereof to a punishment by fine, imprisonment or both.

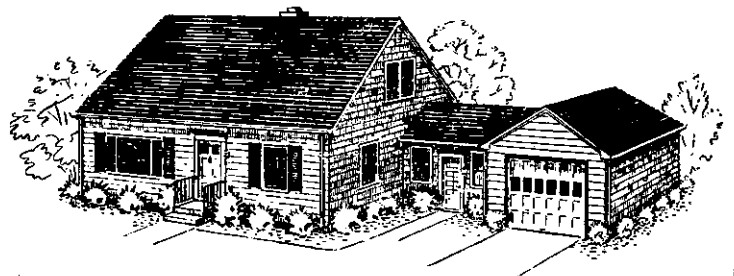
8. Any Peace Officer shall have the right and authority to enforce the foregoing rules and any and all persons charged with the violation thereof shall be dealt with in accordance with the provisions of the Code of Criminal procedure of the State of New York.

REVEALING MY  
IDENTITY  
I'M "BILL DING"  
(building) AS YOU SEE



**Delmar**  
LUMBER & BUILDERS' SUPPLY, INC.  
Phone 9-968 WE DELIVER  
340 DELAWARE Ave. Delmar, N. Y.  
PAINTS - HARDWARE - LUMBER - MASON SUPPLIES - ROOFING - INSULATION

Make Your Dream Come True!!



Your owning a home is easier than you realize.

Stop in and talk over home financing with our Executive Vice President, Mr. Harry Olson. He will explain our direct reduction mortgage plan to you - answer your questions - and you won't be obligated.

Established in 1889  
**FEDERAL SAVINGS AND LOAN ASSOCIATION**  
854 Madison Ave. (Near Ontario St.) Albany, N.Y.

DON'T MISS our SALE of SALES! (LAST WEEK!)

TEXTILE of ALBANY

**BIG FABRIC DOLLAR SALE**

Terrific Values in Every Department—Dress Goods—  
Drapery — Slip Covers — Ready Made Curtains —  
Cafe Drapes — Spreads

**TEXTILE of ALBANY**

91 North Pearl Street, Albany (Opp. Sheridan Avenue)  
ALL SALE ITEMS CASH AND CARRY ONLY

**YOU AUTO BUY NOW!**

- 1956 Ford Ranch Wagon, white and blue, Ford-Radio & Heater, whitewall tires (one owner) **\$1495**
- 1956 Nash Metropolitan Hardtop, Radio & Heater. **\$1145**
- 1954 Pontiac 2-door, 8 cylinders, Radio, Heater, Hydramatic. **\$895**
- 1954 Nash Ambassador, 6 cylinders, 4-door, Custom, Radio, Heater, Hydramatic, 2-tone green. **\$845**
- 1955 DeSoto Firedome Coupe, white sidewalls, Powerflite transmission, R&H, very sharp **\$1595**
- 1952 Nash Ambassador 4-door Sedan, R&H, Hydramatic. **\$495**

**STUDLER'S SALES AND SERVICE, Inc.**

"YOUR RAMBLER DEALER"

Phone 9-923 242 Delaware Avenue, Delmar, N.Y.

**SPOTLIGHT**



*Hair News*



MAY 18

-A son to Mr. and Mrs. Richard N. Hazen, Feura Bush Road, Glenmont, at Albany Hospital; birth weight: 8 pounds, 1 ounce; named: Christopher; three other children: Darrell, 3, Ricky, 2, and Guy, 1.

MAY 22

-A daughter to Mr. and Mrs. David W. Blanchard, 116 Murray Avenue, Delmar, at Brady Maternity; birth weight: 8 pounds; named: Tracy Marie; five other children: David, 11, Gerri, 9, Priscilla, 8, Jeffrey, 6, Gregory, 4.

MAY 22

-A daughter to Mr. and Mrs. Herbert E. Veltman, 7 First Street, Slingerlands, at Brady Maternity; birth weight: 6 pounds, 10 ounces; named: Cynthia, seven other children: Robert, 11, Tim, 8, Cheryl, 5, Steven, 4, Susan, 3, Fred, 2, and Shawn, 1.

MAY 24

-A son to Mr. and Mrs. Frank W. Scalzo, 20 Schuyler Avenue, Ravena, at Brady Maternity; birth weight: 7 pounds, 14 ounces; named: Frank; two other children: Francine, 10, Michael, 5.

**LAWN MOWERS SHARPENED**

Pickup-and Delivery

BENNETT GUN WORKS  
559 Delaware Avenue, Delmar  
Phone 9-1862

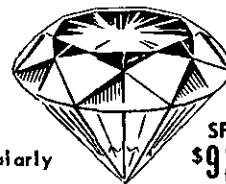
Spotlight Classifieds do the job

AN IDEAL

**Graduation Gift**

**Walco** DIAMOND NEEDLE

UP TO 1000 Hours of Listening Pleasure



Regularly from \$15 to \$30

**SPECIAL \$9.95** for all makes and models

"Worn Needles Distort Sound, Destroy Records!"

**HI-FIDELITY CENTER**  
324 CENTRAL AVENUE  
(Corner Quail)

ALBANY 3-1167

**Hamele's** MEATS OF QUALITY

**Del Monte**  
Vacuum Packed

**COFFEE** LB. **83¢**

**Morrell's "Pride"**  
SLICED 1 lb. CELLO

**BACON** **75¢**

Imported German  
CANNED

**HAMS**

3 lb. can **\$2.98**

5 lb. can **\$4.95**

**Hamele's** MEATS OF QUALITY

542-546 DELAWARE AVE.  
2½ blocks South of 2nd Ave—Parking

**Delmar's Only Quality**

**1-HOUR SHIRT LAUNDRY AND CLEANERS**

Come in, see for yourself how a really modern, quality shirt laundry and cleaning plant operates.

**UNITED**

So easy to get to . . . NEXT TO THE DELAWARE PLAZA SHOPPING CENTER  
Right on Delaware Avenue in Elsmere Plenty of Parking Space



# Fun After Dark



**MAYFAIR DRIVE-IN**  
4 miles west of Albany  
Rt. 8, New Scotland Rd. Slingerlands

Thur-Fri-Sat - June 26, 27, 28  
Dean Martin & Jerry Lewis  
in  
**SCARED STIFF**  
AND  
**JUMPING JACKS**

Sun-Mon-Tues-June 29, 30 and July 1  
ALEX GUINNESS in  
**The LADY KILLERS**  
AND  
**To Paris With Love**  
-CARTOONS-

Listen to WABY, the Chris Martin & Bill Pope Shows on Friday & Saturday.

**"THE MOON IS BLUE" NEXT FOR SHELLEY PLAYERS**

Of the "Moon is Blue," Brooks Atkinson once wrote, "The play turned out to be the lighthearted comedy everyone had been waiting for." A delicious story about an innocent, frank, young girl who meets a young architect at the top of the Empire State Building. They become hilariously acquainted and she

goes to his apartment and becomes involved in some amusing situations. She determines to cook a meal for him and everything goes along swimmingly until she finds out he's more or less engaged to the daughter of his friend and neighbor. The friend shows up and becomes amoured with the girl. Situa-

tion becomes somewhat involved and slightly riotous when the girl's father, a puritanical policeman, turns up and starts swinging. Everybody sort of misunderstands everything and the play terminates at the top of the Empire State Building in a way that will have you really chuckling.



Instead of waiting for your subscription to expire, send \$2 for 3 FULL years right now!!

**Concert Violinist ALFREDO CAVALIERI**  
and His Accompanist Alice Mahoney  
Will Play Sat. & Sun. Dinner from 4 to 10 P. M.  
(Just Like Maxim's)

In Our Cocktail Lounge  
Friday & Saturday Nights  
**RUTH HUTCHINSON**  
Entertaining on the Piano

Lunch & Dinner Except Monday  
Served Daily

Reserve for Parties and Banquets  
Phone 2-7864

**Petit Paris RESTAURANT**  
1060 MADISON AVE., ALBANY, N. Y.

**JERICHO DRIVE-IN**  
1.5 MI. SOUTH OF ALBANY

Between Glenmont & Selkirk  
Box office opens at 7:15-RO 7-3359

Thur-Fri-Sat-June 26, 27, 28  
**Glenn Ford Jack Lemmon**  
AUTHENTIC GREATNESS!  
**COWBOY**  
In Technicolor  
-SECOND HIT-  
Lauren Bacall in  
**GIFT OF LOVE**  
EXTRA: FRIDAY & SATURDAY  
BIG CARTOON SHOW  
**FREE** Ice Cream & Candy for the first 150 Children!  
-0-  
Sun-Mon-Tues-June 29, 30 and July 1  
-2 Technicolor Hits-  
ASK ANY GI ABOUT...  
**FRAULEIN**  
Dana Wynter Mel Ferrer  
-SECOND HIT-  
JOEL MC CREA in  
**CATTLE EMPIRE**

Shirley (Shelley) Kaye, producer of "The Moon Is Blue" at the Shelley Players Red Barn Theatre on New Scotland Road, brings 'live' theatre to our area for the third consecutive year.

**the shelley players**

RED BARN SUMMER THEATRE  
New Scotland, N. Y.

Through Sunday, June 29  
"WILL SUCCESS SPOIL ROCK HUNTER"

NEXT WEEK:  
**The Moon Is Blue**  
Tues., July 1 through  
Sunday, July 6

Tickets Available  
O. S. Pulman 9-4475  
Box Office ROckwell 5-2025  
Prices: \$2.20, \$1.65, \$1.25

Dean of directors in the American theatre, Garrison P. Sherwood returns to the Shelley Players again this season. In addition to being an outstanding director, Mr. Sherwood is also known for his editing of several collections of plays.

**DELAWARE Plaza** in Delmar  
MODERN ONE-STOP SHOPPING

Ummmmmm, GOOD!!  
That's the decision of the hundreds of diners who've been to THE ELSMERIAN on a Tuesday night. Every Tuesday this famous-for-fine-food(!) Restaurant serves a deliciously tantalizing SMORGASBORD. You'll want to join the happy throng this coming Tuesday! Make it a Date!

There's always plenty of FREE parking at the FRIENDLY Delaware Plaza

Again... A Murray-Simon, Inc. Project

**MODERN Mothers Prefer**

Give Her a DyDee Gift Certificate

Largest Diaper Service in Northeastern New York



Albany 2-0419

**Now!**

**December's fuel oil bill can be as low as June's**

**with our convenient BUDGET PLAN!**



**Easy payments**

We estimate your yearly fuel needs. The cost is divided into equal low monthly payments. There are no finance charges.

**Filter protection, too**

Only Shell Heating Oil contains Shell's special additive that keeps your burner filter screen clean all winter.

**Plus Free Sonitor®**

We treat your storage tank with Shell Sonitor to protect it against inside rust and corrosion. No charge.

**Automatic Delivery**

We automatically deliver your Shell Heating Oil. As your supply diminishes our records tell us when you need oil.

**ASK FOR DETAILS—NO OBLIGATION**

**WILLIAM McEWAN Coal & Oil Co.**

Since 1863

4-1211 4-1211  
26 Clinton Ave., Albany, N.Y.



**Premium Grade Heating Oil—Premium Service**

**LETTERS**

**The Spotlight:**

The Consistory and members of the Glenmont Community Church (Reformed) wish to extend a hearty "thank you" for the splendid coverage you gave our new Church in your May 15 issue.

Reading your pleasant weekly news items, is indeed a happy change from the usual front page news of papers today.

Our sincere appreciation to the Spotlight staff.

William Mueller

**The Spotlight:**

Thank you for your splendid cooperation in the recent campaign to publicize our Department's annual Carnival.

Despite an evening of rain and cold weather throughout the Carnival weekend, we enjoyed excellent attendance and although the final figures are not yet in, we expect that they may even surpass last year's.

Success of the annual Carnival is most important to us since it is our only source of income. Therefore, we are especially grateful to you for your public spirited editorial assistance.

I am now more fully aware that the Spotlight is the most widely and completely read publication in the Tri-Village area and I hope that more and more advertisers become aware of it as their most rewarding advertising medium.

Edward D. Pakenham

PHONE 9-1724 P.O. Box 65

**SHANNON & MYERS COMPANY, INCORPORATED**

**Carpentry - Contractors**  
Repairs - Remodeling  
Alterations  
All kinds of Mason Work  
Chimney Repairs

EL SMERE AVE., DELMAR

**\$37.17**

Per Month with standard Down Payt.

**NEVER BOUGHT SO MUCH!**



The British

**TRIUMPH**

4-door Sedan

Keith Witter, Foreign Car Sales Mgr

**ALBANY GARAGE**  
**28 HOWARD ST.**

- SERVICE - SALES - PARTS -



**SEE for yourself . . .**  
how much finer, how much larger  
our diamonds are! . . . how much  
further your diamond dollar will go!

A Comparison Will Amaze You

Typical Value—Absolutely Flawless  
**1/2 Carat Diamond \$210.\***

CHARGE ACCOUNTS INVITED \*Plus Tax

**Frank Adams**  
Jewelers-Silversmiths  
No. Pearl St., Cor. Steuben

## Tebbutt's CHURCH CALENDAR of EVENTS

**NEW SALEM REFORMED CHURCH**, New Scotland Road; P.O., R. D. 1, Voorheesville - Rev. John H. Austin, Pastor. Tel. RO 5-2698.  
**SUNDAY**-10 a.m. Sunday School; 11 a.m. Morning Worship.

**ONESQUETHAW Reformed Church**, between Route 32 and Clarksville. Rev. Arthur Homberg, Pastor.

**SUNDAY**: 11 a.m. Church School; 12 Noon-Worship Service.

**CLARKSVILLE GOSPEL FELLOWSHIP** meets at the home of Rev. Wendell Hiltzley, Olive St. Poplar 8-2631.

**SUNDAY**-7:30 p.m. Gospel Meeting.

**TUESDAY**-7 p.m. Jolly Teen Time  
**THURSDAY** - 7:30 p.m. Bible Prayer Hour.

**UNIONVILLE REFORMED Church** Delaware Turnpike, Unionville - Rev. Louis H. Chisman.

**SUNDAY**: 10:00 a.m. Sunday School; 11:00 a.m. Worship Service

**JERUSALEM REFORMED CHURCH**, Feura Bush - Rev. Arthur P. Homberg, Pastor.

**SUNDAY**-9:30 a.m. Sunday School; 10:30 a.m. Worship Service; 7 p.m. Youth Fellowship.

**MONTHLY**-8 p.m. Ladies' Guild, 1st Monday; 2 p.m. Ladies' Aid Society, last Thursday; 8 p.m. Sunday School Teachers & Officers meeting, last Tuesday; 8 p.m. Consistory Meeting, last Monday.

**NEW SCOTLAND PRESBYTERIAN CHURCH**, Rev. Homer B. Silvernail.

**SUNDAY**, 10:30 a.m. Church Worship; 11:30 Church School; 7:30 p.m. Youth Fellowship.

The Calendar of Church Events is sponsored by:

### TEBBUTT FUNERAL SERVICE

We are proud of our record of more than 100 years of dignified, dependable service. Our reputation was built on conscientious attention to the individual needs of every family we serve . . . at prices that all can afford.

420 Kenwood Avenue, Delmar 9-2212

176 State Street, Albany 3-2179

12 Colvin Avenue, Albany 89-0116

11 Elm Street, Nassau Nassau 8-1231

**ST. STEPHENS EPISCOPAL CHURCH**, Elsmere Ave., Delmar - Rev. Charles H. Kaulfuss.

#### SUMMER SCHEDULE:

**Sunday**:  
 8 a.m. Holy Communion  
 9:30 a.m. Family Eucharist (Nursery all summer at this service)

**DELMAR PRESBYTERIAN CHURCH**, Rev. George H. Phelps. Sunday Services are held in the Delmar Masonic Temple, Kenwood Avenue and Adams Street

**SUNDAY**: 9:15 a.m. Worship and Church School through Grade 6. Nursery care for children under 3. 5 p.m. Junior and Senior High Youth Fellowship with supper each week. Also Church School classes, worship and fellowship program. 7:30 p.m. Adult Bible Study course at 25 Roweland Avenue. Teacher: Dr. Theodore G. Brown.

**CLARKSVILLE COMMUNITY CHURCH**, Rev. Charles W. Smith, pastor.

Church School at 9:45 a.m.  
 Worship Service at 11 a.m.

**CHRISTIAN SCIENCE SOCIETY**, Delmar.

**SUNDAY**-11:00 a.m. Church Service & Sunday School. Masonic Temple, Kenwood Ave.

**TESTIMONIAL MEETINGS**: Every Thursday at 8 p.m.

**FIRST METHODIST CHURCH OF VOORHEESVILLE**, Rev. Walter Taylor, Pastor.

**SUNDAY SCHOOL**- 9:45 a.m.  
**WORSHIP SERVICE**- 11 a.m.

**THE METHODIST CHURCH**, So. Bethlehem. Rev. W. I. Cosman.

**SUNDAYS**-  
 9:45 a.m. Church School; 11 a.m. Morning Worship; 7 p.m. Youth Fellowship.

**GLENMONT COMMUNITY Church** (Reformed), Weiser Street, Glenmont - Rev. Harvey W. Noordsy, Minister.

**SUNDAY** Worship, 10 a.m., Sunday School, 11 a.m.

**ST. THOMAS CATHOLIC CHURCH** Delaware Avenue, Delmar - Msgr. Raymond F. Rooney.

**SUNDAY MASSES** (In the Church) 7, 8, 9, 10 & 11 (In the Auditorium) 9, 10 & 12 noon.

**WEEKDAY MASSES**: 6:45 & 7:30.  
**SATURDAY MASSES**: 8 & 9.

THERE is Nursery care each Sunday for pre-school children at the school during the 10 & 11 o'clock Masses.

**FIRST METHODIST CHURCH**, Kenwood Avenue, Delmar - Rev. Arthur P. White and Richard Campbell.

**SUNDAY**, June 29-10 a.m. One service. Sacrament of Holy Communion. Church School for Cradle Roll, Nursery and Kindergarten, Grades 1 through 3 attend church with parents and leave during second hymn.  
**MONDAY**, June 30-Thursday, July 3 - 9:30-11:30 Vacation Church School for children 3½ to 14 years of age.

**CAMP PINNACLE**-18 miles south west of Albany, Route 85.

**SUNDAY SERVICES**:  
 11 a.m. - 4 p.m. - 7:30 p.m.

**DAILY SERVICES**:  
 11 a.m. - 7:30 p.m.

**COMMUNITY METHODIST Church**, Slingerlands, Rev. James R. Rhodes.

**SUNDAY**, June 29 - 10:30 a.m. Morning Worship: Topic: "Three Things Are Stately." Nursery and Kindergarten care in Fellowship Hall during Sundays in June, July and August.

**DELMAR REFORMED CHURCH**, Delaware Avenue - Rev. Dr. LeRoy C. Brandt.

**SUNDAY**, June 29-10 a.m. Nursery; 10 a.m. Holy Communion Service. Dr. Brandt's meditation will be: "The Uncondemned."

**BETHLEHEM LUTHERAN Church** Cor. Elm and Murray Aves - Rev. Lawrence Heuchert, 440 Kenwood Avenue, Telephone 9-1615.

**SUNDAY**,  
**JUNE**:  
 8:30 a.m. Matins Service  
 9:45 a.m. Sunday School  
 11:00 a.m. Morning Worship Service  
**JULY & AUGUST**  
 8:30 Matins Service  
 10:00 a.m. Morning Worship  
**TUESDAY**, 10:30 a.m. Adult Bible Study  
**AUGUST** 18-29-Vacation Bible School

**FIRST REFORMED CHURCH** Bethlehem-Selkirk, Rev. Theodore W. Luidens, minister.

**SUNDAY**, June 29 - 9:45 Sunday School; 11 a.m. Worship Service: Communion; New members will be welcomed; 8 p.m. The combined Choirs will present a Sacred Concert of music enjoyed by the congregation this past year.

OUR Sunday School will be closed during the months of July and August. Church Service will be held at 10 a.m. in July. In August the congregation will worship at the Glenmont Community Church (Reformed).

DAILY Vacation Church School will begin Monday, July 7, and continue through July 18. All registrations must be in soon. All children of the community are welcome.

## BILL LANG SAYS Cross Over the Bridge

BEST DEALS ANYWHERE ON A NEW

**CHRYSLER - PLYMOUTH - IMPERIAL**  
 15 MINUTES FROM TRI-VILLAGES - WHERE  
 YOU CAN GET YOUR

**Chrysler - Plymouth - Imperial**

SERVICED BY FACTORY-TRAINED TECHNICIANS

Prompt, Pleasant Service at the Home of One-Year  
 100 Percent Guaranteed Used Cars

STOP IN . . . YOU'LL BE GLAD YOU DID!

## AIRWAY MOTORS

CHRYSLER - PLYMOUTH - IMPERIAL DEALER  
 RENSSELAER, NEW YORK 4-2183

TELEPHONE  
**76-8-2143****SPOTLIGHT CLASSIFIEDS**TELEPHONE  
**PO-8-2143****CLASSIFIED  
BUSINESS SERVICE****BABY SITTING**

**EXPERIENCED** baby sitter wants extra work any evening except Thursday. .75¢ per hour. Call PO 8-2143.

**BLACKTOP SERVICE**

**ADD 100%** more life to your blacktop - sealing, patching, rejuvenating. Blacktop Sealing Company, 9-4289 after 6.

**BULLDOZING, GRADING**

**CELLARS**, ponds, grading, etc. Fill, shale and top soil. Jim Salisbury. Call E. Berne 81-J3.

**JOHN Deere** crawler, blade and power winch; grading and back fill. 5-4609.

**FILM PROCESSING**

**SAVE TIME!** Mail film: Schellhaas Camera, Delaware Plaza. Postage deducted.

**FLOORS**

**INLAID** linoleum, Formica and linoleum tops. Sales and installation. Bartley's. 9-3190.

**LAWN AERATING**

**AERATING** permits water, air & fertilizer to reach grass roots; cuts summer watering in half. Jerry Jonas, 9-4632.

**PAINTING & CARPENTRY**

**FRANK SALISBURY**, General Contractor. Interior and exterior painting, carpentry. Bailey Ave., Delmar. 9-1355.

**PAINTING and/or PAPERING**

**ARTHUR J. Armstrong**, general painting and paperhanging. Call UN 1-8720.

**ROY FLANSBURG**, painting contractor. RO 5-2712, Voorheesville.

**PRECISION** painters at recession prices. Interior and exterior painting. 9-2550.

**PARTY DESSERTS**

**ULTIMATE** in Party Desserts: Schrafft's Ice Cream. Plaza Phar.

**CLASSIFIED  
BUSINESS SERVICE****PHOTOS**

**PASSPORT**, chauffeur, identification pictures. No appointment. Schellhaas, Dela. Plaza. 9-1472

**RADIO & TV REPAIR**

**BETHLEHEM** Electronics offers guaranteed service and sales of TV sets, Radios, Phonographs and other items in the electronics field. 9-647.

**ROOFING CONTRACTOR**

**ROOF REPAIRS:** expert workmanship, finest materials, sensible charges, free estimates. 9-1563.

**SEWING**

**EXPERT** alterations & drapes, done your home or mine. 8-4667.

**SIGNS**

**COMMERCIAL** signs, counter cards designed at reasonable rates. PO 8-2143.

**STONE & FILL**

**CRUSHED** stone, shale, sand, gravel; stone for retaining walls. PO 8-2214 or after 6: PO 8-2641

**TOP SOIL, FILL, ETC.**

**QUALITY LOAM** - new lawns. Call 9-3823.

**TRUCKING, LIGHT**

**WE MOVE:** Pianos, Freezers, Refrigerators, Stoves, Furniture, etc. Bicycles repaired, will pick up. Ken Lake, 9-4424 or 9-3297.

**TRUCK FOR RENT**

**TRUCK** for rent: 1½ ton rack with dump, \$1.50 per hr. plus 5¢ per mile. 9-3190

**TUTORING**

**REMEDIAL** Reading: group or private instruction by experienced teacher. 9-707.

**TUTORING** in French or Latin. Graduate of St. Agnes with 6 years of French, 4 years of Latin. 9-2630.

**CLASSIFIED  
BUSINESS SERVICE****UNDERWATER WORK**

**DOCKS** moored; lost articles retrieved and light salvage work done at reasonable rates. 9-1308.

**MERCHANDISE  
FOR SALE**

**LAST CALL** for Plants! 85 Cherry Avenue, Delmar.

**CRYSTAL** chandeliers, house safe, farm bell, mounted; many other items. RO 5-2024.

**18"** reel-type power lawn mower, good condition, \$40. 9-2732 eves.

**SILVER** tea and coffee service, like new, appraised for \$175, sell for \$100. 9-1968.

**2-PIECE** sectional sofa, corner lamp table and cocktail table. 9-3823.

**½-TON** York room air conditioner, used 4 mos., cost \$240, sell for \$125. 9-2749 before noon or evenings after 7.

**SCREENS:** 4-28x47½, 2-30x55, 1-24x36, 1-29x37, all for \$8; storm window 24x36, \$1. 9-1333.

**TOYS:** Beautiful sled, tricycle, big locomotive, galloping spring horse, wagon—all for \$17. Ravena 7-1293.

**WALNUT** dining set, table, 6 chairs, china closet, seats 12, pads, leaves, \$25. 3-8603.

**GE** auto, portable dishwasher, perfect, \$30. 9-4140.

**TYPEWRITER**, Smith Corona Skywriter portable, 1 year old, excellent, \$40. 9-2630.

**ANTIQUE** pine corner cupboard. 9-4230 after 5:30.

**MOVING:** Cotton loop beige rug and pad, 14x15; beige drape. 9-3983.

**9-PIECE** dining set, walnut, china closet, buffet, table, 6 chairs. 4-4267.

**MAPLE** hanging bookshelf, 18x29; foam rubber rug cushion, 27"x 10"; Hendryx bird cage & stand; corner what-not; maple coffee table. 9-2954.

**REGINA** antique music box, mahogany, excellent, 30 metal records, \$100. 4-5774 after 6 or weekends.

**SMALL** maple crib, \$3. 9-1996. 28' wood extension ladder, \$14. 9-692.

**VIOLIN**, complete with case, \$20. 9-692.

**BEDSPREAD** & drapes, reasonable. 153 Homestead Ave., Albany. 2-8173.

**GLASS** top coffee table, \$8; Occasional chair, \$12; 3 pairs lined drapes, \$5. 2-7287.

**MERCHANDISE  
FOR SALE**

**ALL ½ PRICE:** Portugese & Czech pottery vases, were \$19.50; Czech china set, service for 8, paid \$139.50; crystal goblets and sherbets, cost to \$36 box; Red Cedar picnic table & benches, cost \$29.50; portable grill, cost \$12.95; table linens, blankets & bedding. PO 8-2138 mornings & evenings.

**DARKROOM** equipment including DeJur enlarger & aluminum tripod, \$50 complete. Ravena 8-6038 evenings.

**TWO** garage doors, 4x8, hardware, \$15. 9-1295.

**ALUMINUM** patio awning in two sections, each 10½x7 feet; only 3 years old. Cost \$600, sell for \$100. 9-1168.

**12x15** blue rug & pad, \$20. 9-636.

**ACCORDION**, full base, perfect condition, \$150; reconditioned 17" GE television, \$25. 9-1894 evenings.

**SOLID** cherry bookcase with secretarial desk, good condition, \$35. 9-2081.

**4 Screens:** 29x55, 33½x55, 29½x37, 25½x37, good, reasonable. Call 89-3172 between 4 & 8 p.m.

**SIX-LEGGED** antique cherry drop-leaf table with pad; small cherry drop leaf table; rosewood occasional 2-pc. set; 6 saddle seat plank dining chairs; large wing chair; 2 antique bedsteads; washing machine motor; small baby crib; jig saw; lamps, practice piano, bric-a-brac, safe, 2 commodes. PO 8-2257.

**3-PIECE** blue circular couch, needs cleaning, \$100; 3-piece Maple Hollywood bedroom set, complete, \$100; **FOR CAMP:** 2 gas & oil kitchen ranges; Kelvinator refrigerator. Strolier & bassinet, both \$7. ROger 7-3176

**WATER** skis, custom, low price. 9-2778.

**3** alum. venetian blinds, 34½x53, 1-53x58, sandalwood color, all excellent; 9-2187.

**ROTOTILLER** attachment for garden tractor; 30" sickle bar for small garden tractor. 5-8712.

**WOOD** clarinet, good cond., \$35. 9-2778.

**5** hand carved, fiddleback chairs, \$40; Four-poster Colonial bed, \$6; 2 Kumfort Kots, complete, \$10; 2 mantle gas lanterns, \$7. 9-1234 between 9 a.m. & 12 noon.

**VORNADO** 20" reversible window fan, 3 speeds, cost \$69.95, sell \$37; antique black rocker, \$5.50; Maple drop leaf cocktail table, \$10. 89-3649.

**WATER** Sprite aquaplane, \$18; 2½ step boat ladder, rubber tips, \$6.50; solid brass power prop, 25-35 hp. outboard, \$12; Aquarium, lights, fish; Roto-Broil 400 with spit, \$12.50. 9-1593.



# CLASSIFIEDS

MORE Classifieds and Classified Rules on Page 18 of this issue

## MERCHANDISE FOR SALE

**WESTINGHOUSE** refrigerator, good condition, re-built, re-enameled, \$55. 89-0797.  
**DINING** table, 7 leaves, buffet, 8 chairs, studio couch, wicker rocker, wash stand. RO 7-3092.  
**COLLIE** size dog house, well built, \$15. 9-4658.

## MERCHANDISE WANTED

**LETTER** or legal size filing cabinet, reasonable. 9-1662.

## PETS FOR SALE

**FREE**—Homes wanted for 3 beautiful kittens. Will deliver. POplar 8-2098.  
**GERMAN** Shepherd for studding. AKC papers. 89-1262.

## BOATS & ACCESSORIES

**12' THOMSON** boat with 7½ hp. motor used 10 hrs., with trailer, excellent. RO 7-2775.  
**SAILING** pram, 8', never used, complete with sail and oars, \$100. 4-5774 after 6 & wkends.  
**14' Thompson** runabout, windshield, remote control steering, new trailer. 9-1635.

## PERSONAL

**NOW YOU** can send your son or daughter to camp and **YOU CAN GO ALONG**, too! There's a place within two minutes of Delmar, where you can swim, play almost every game and sport imaginable, (equipment furnished!), have a fire for cooking, roam over acres of land, loaf, talk . . . you name it! And all this every Saturday and Sunday for 8 WEEKENDS . . . and for the price you'd expect to pay for swimming alone! Call 9-2464 right now and talk it over!

**PLEASANT** room, excellent food, private home for gentleman on retirement seeking permanent home. Suburbs, 20 minutes Albany. Pleasant, informal social environment. Modest fee. Box 64, Delmar.

## HELP WANTED FEMALE

**COLLEGE** girl reliable mother's helper 3 days a week. 9-5572.  
**EARN** up to \$60 a week working only part time. No experience needed. Call 9-1159 for interview.

## HELP WANTED FEMALE

**WORKING** mother needs part time help; care for 5 year old child; light housework. Reply Box 64, Delmar.

## HELP WANTED Male-Female

**PART** time or full time stenographer. 9-1993.

## SITUATIONS WANTED

**GIRL** 14 wants work for summer. 9-1728.  
**HOUSEWORK** by day. 9-3940 evenings or weekends.

## ROOMS FOR RENT

**ROOM** for rent, on bus line, large. 9-3309.

## REAL ESTATE FOR SALE

**SOUTH BETHLEHEM** - Cape Cod 2-bedroom, expansion attic, sun porch, 2-car garage, storms, screens, Venetian blinds, awnings, \$11,500. ROger 7-2546.  
**8 WELLINGTON ROAD**, Elsmere. \$10,500. Call evenings or Sunday. 9-1426.  
**HELDERBERG Lake**—lovely home on lake, all improvements, oil heat, 25 minutes Albany, will sacrifice. East Berne 63-J-2.

## REAL ESTATE FOR RENT

**3 ROOMS**, bath. Heat, hot water and electric furnished. Private entrances and porch. Plenty of room for garden. \$70 month. Working couple preferred. 9-4857  
**UPPER** 2 bedroom flat; oil heat; near 4 Corners. Available Aug. 1. \$72.50. 9-728.

# ADVICE TO THE 'RUB-WORN'

An advisable preliminary step in doing wash-and-wear garments is a thorough inspection of the entire garment with particular emphasis on those areas subject to unusual abrasion or contact with soiling agents.

Concentrate special time and effort on each of the following areas: underarms, collar and cuff lines, seats and back of each garment. Where necessary, tamp or work these areas gently between fingers with a detergent and water solution. Do NOT brush localized areas vigorously.

This procedure will shorten the time needed to wash the garment in your automatic washer. It will also spare you the disappointing experience of finding that a regular run in your washer did not remove this ingrained or heavily concentrated soil or stains.

Above all else, avoid persistent attempts to remove stains that have resisted both your efforts and the washing action of your machine. It will only lead to unsightly discoloration on your garment. The stubborn stain must be either grease or some water solution that chemically resists the insoluble action of the detergent and water. Our advice to you is to take it to a professional Dry Cleaner to save yourself both trouble and money.

We would like you to know that we are completely equipped to process all of your wash-and-wear garments. They are treated before Dry Cleaning to remove any water insoluble stains, thoroughly Dry Cleaned, and then washed by custom hand brushing (NO machine washing), for further removal of any stubborn problem stains and soil.

It is the candid opinion of textile experts that wash-and-wear garments should have a reasonable amount of hand ironing to maintain a satisfactory appearance. You must know this type of fibre is extremely sensitive to heat. There is the risk of distorting the fabric, puckering or imprinting seam lines, and unsightly permanent glazing. Heat above 275 degrees Fahrenheit will melt the fibers completely.

We are thoroughly equipped to finish wash-and-wear garments through the recent installation of the new "FABRIC-SAFE" method specifically designed and made to safely and superbly finish all fabrics made of the new miracle fibers.

**HANDY DANDY CLEANERS**  
 -Doing One Thing Well Since 1925

# WE CERTIFY

our plant is now equipped  
 with *Fabric-Safe* method for

## Superb finishing of DACRON\*

### ORLON\*\*...ACRILAN† WOOLS...SILKS

and all "fussy fabrics"

\*Dacron™ DuPont's polyester fiber  
 \*\*Orlon™ DuPont's acrylic fiber  
 †Acrlan™ Chemstrand's acrylic fiber



PROFESSIONAL  
*Fabric-Safe*  
 CLOTHES CARE

Especially  
for you . . .



HANDY-DANDY  
 Cleaners

. . . at no  
extra cost!

DOING ONE THING WELL - SINCE 1925

# FOWLER'S LIQUOR STORE

SEE GEORGE OR HARRY FOR BETTER SPIRITS

**We Deliver**

Theatre Building  
333 Delaware Ave 9-2613

## DRIVE THE HILLMAN HUSKY



For more room... plenty of space for 4 adults and 300 pounds of luggage! Flick down the rear seat and there's room for 300 more lbs. of cargo!

For more economy... costs \$1000 less than "low-priced" American station wagons... cost 1/2 as much to operate! Delivers 30-35 mpg!

For more beauty... clean, uncluttered styling... hand rubbed lacquer finish... long, low lines!

**\$1549.** with your exchange

come in and drive a **HILLMAN**  
HILLMAN/SUNBEAM

# NEMITH Auto Company

INTERNATIONAL AUTO SHOWROOM  
RTE. 9 LATHAM  
ST 5-8531

For a Deal that tops 'em all!!!

## BIKES FOR SALE

24" Boy's bike, gd. cond., \$20. 62-2755.

## AUTOMOTIVE For Sale

SOME DEALERS have LOW overhead. We have NO overhead. Save 30% to 40%. Call Fred at Albany 3-9405.

1947 Buick sedan, '58 inspected; 1950 Chevrolet 1-ton panel, good condition, not used for 3 years. Albany 2-8459 evenings.

'46 Jeep, 4-wheel drive. \$450. 9-1517.

### -CLASSIFIED ADVERTISING- Percentage Ads

GENERAL MERCHANDISE are only ads taken on percentage - NO established businesses, PLEASE! 10% on sales \$1 to \$101 - 5% \$102 to \$501 - 2% \$502 up. The MINUTE you sell an article, CALL US. These ads run for THREE weeks. Do NOT advertise elsewhere during that time. (NO used clothing accepted on % basis!)

#### -Paid Classifieds-

All other classifications are accepted at 10¢ per word, \$1 minimum, payable in ADVANCE.

#### -Closing Deadline-

Thursday, ONE WEEK prior to publication.

#### -PAYMENTS-

Mail: Spotlight, Delmar, N.Y. Leave at: PLAZA PHARMACY

## Foreign Cars

- '58 Jaguar 3.4 sed. demonstrator
- '58 Sunbeam Rapier
- '58 English Ford panel truck
- '58 Triumph Sedan
- '58 Triumph Estate Wagon
- '58 Austin A-35 Sedan
- '58 Austin-Healy Roadster
- '58 English Ford Anglia
- '58 English Ford Prefect
- '58 English Ford Consul
- '58 Hillman Minx Sedan
- '58 Hillman Husky
- '58 Jaguar XK150 Rdstr.
- '58 MGA Roadster
- '58 MG Mquette Sedan
- '58 MGA Hardtop
- '58 Morris Minor 2-door Conv.
- '58 Renault 4 CV Sedan
- '58 Renault Dauphine
- '58 Triumph Roadster

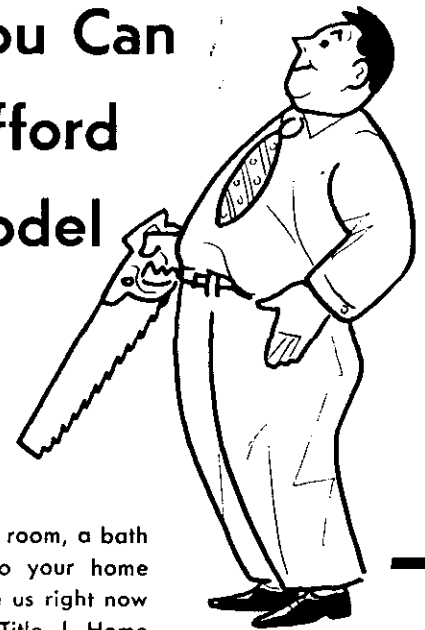
- '57 Lloyd Sedan \$995
- '56 Eng. Ford Consul Sed. \$1195
- '52 Volkswagen Sedan \$795
- '55 Jaguar X K 140 M C Convertible, mint condition. only 18,000 miles.
- '53 MG TD fully equipped. Like new.

AND MANY OTHERS  
BANK RATES  
UP TO 36 MOS. TO PAY

## Greene County Motors

RT. 9-W, CATSKILL, N. Y.  
OPEN EVES. TILL 9. TEL. 1582

# Yes, You Can Easily Afford To Remodel Your Home!



If you want to add a room, a bath or a new garage to your home... come in and see us right now about a low cost Title I Home Remodeling Loan! You can enjoy better living now... pay for the improvement over a long amortization period.

And you can make it even easier to meet your monthly loan installments by paying them out of savings. We invite you to open a 3 1/4% Savings Account here today.

**Now YOU EARN** **3 1/4%** **Interest with Insured Safety**

SEND FOR FREE SAVE-BY-MAIL INFORMATION

VOORHEESVILLE **Savings and LOAN ASSOCIATION**  
Voorheesville New York Phone RO 5-2772

Permit No. 10  
**PAID**  
U. S. POSTAGE  
Bulk Rate

