

The Spotlight

VOL. III, NO. 35 • \$1.00 A YEAR

AUGUST 7, 1958 • TEN CENTS



Mike Zedek and John Reddish have fun and learn too! Horseback riding is brand new this year at Sunny Acres Day Camp. Instructor (in white) is Nancy McConnell, assisted by Judy Cohn.

**COMING!
AUGUST 21**



**SPOTLIGHT
Back-to-School
Supplement**

Big College vs. Small

Many boys and girls have been receiving their letters of acceptance or rejection to colleges these past few weeks. This is a nerve-racking ordeal and it promises to get worse in the next few years.

However, the picture is not as black as many parents and college-minded youths would have one believe. True, it is very hard to get into some colleges (for instance, for every freshman accepted at Yale, 3 are turned away), yet it is comparatively easy to get into others.

The United States Office of Education reports that there are eighteen hundred and eighty-six colleges and universities in the country. New York State, with 153 colleges, leads all other states. New York City alone has 49 of them.

Statistics are always fascinating. Last year was the first year in which this country had ever had over 2 million men in college and the second consecutive year in which there had been

over one million women in college. This is the fourth year of such record enrollments and it appears that the records will continue to be broken until about 1965. This is the approximate year when all those so-called "war babies" of the 1940's will be of college age. With all these colossal figures in mind, it is little wonder that the average student worries if he will ever be able to go to college.

However, it is a fact that some colleges have vacancies. The University of Alabama and Ohio State could each have accepted two thousand more students this past year; N. Y. U. could have taken 1200 more; the University of Chicago 550 more. Many of the smaller colleges were desperately looking for students - not because they aren't able to give a first rate education but because they are not well known.

So, if you are having trouble with the "big-name" schools - forget them. It is more fun to be a big fish in a small puddle anyway. Start the trend to make the small colleges of your choice popular.

ART INSTRUCTOR SHOWS PAINTINGS AT LIBRARY

Joe Todak's paintings now being shown at the Delmar Public Library are a "must" for everyone in our area to see. They encompass the traditional as well as the modern; and they have started artistic debates even among the uninitiated.

Joe, the art director of the Junior High School, is a slight, charming man, whose main interest in life, since high school days, has been painting. Born

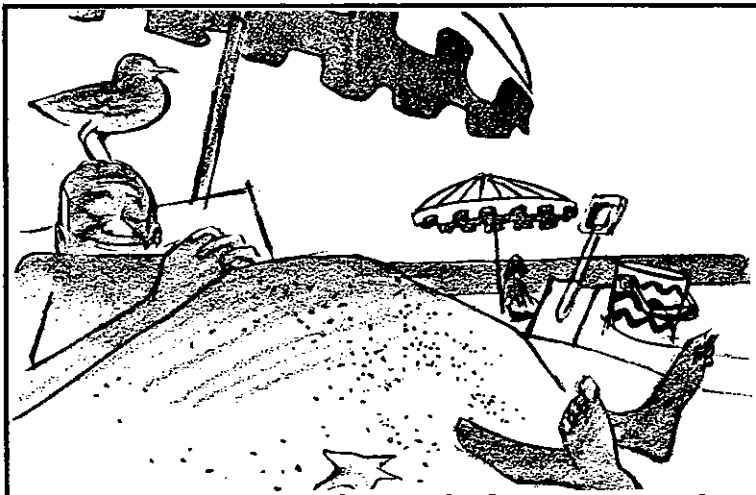


Joe Todak

and brought up in Minersville, Pennsylvania, a high school teacher first realized his ability and coached him to faithfully reproduce religious figures. She also guided him to select Kutztown Teacher's College because of the excellence of their art course. The war interrupted his art career. From 1941-1945, he served aboard an air-craft carrier in the Pacific and had little time for painting. However, he returned to Columbia University to further his studies in painting and sculpturing and received credits in art education and fine arts.

He came to Delmar 10 years ago to teach in our public school system and as a hobby "to paint" - often until the small hours of the morning. He has been se-

(Continued on Page 2)



On your vacation, relax with the assurance that your house and belongings back home are insured by

ROSE & KIERNAN

INSURANCE AND SURETY BONDS
163 DELAWARE AVENUE, ELSMERE, N. Y.
Opposite Delaware Plaza Shopping Center Phone 9-4961

Ask Your Doctor About Our Pharmacy!

Surgical Supplies - Wheel Chairs - Crutches
(For Sale or Rent)

THE CARROLL PHARMACY

4 Pharmacists
Arthur Starman PhG. William R. Warner B.S. Phar.
Albert D. Warner PhG. Thomas Longtin B.S. Phar.
372 Delaware Avenue, 4 Corners, Delmar - Phone 9-1769
FREE DELIVERY

TV WASHERS DRYERS DISHWASHERS

Factory Engineered Replacement Parts

E. F. MUZZEY, Jr.

SERVICE IS OUR BUSINESS

Channel 10 Antennas Installed for As Low As \$15.95

Call 9-3419

24-Hour Service

Office: Spore Road, Delmar R. D.

TODAK EXHIBITS

(Continued from Page 1)
lected on three separate occasions a winner in the Myer's Art Shows, and has sold many of his paintings to discriminating Delmar neighbors.

"Seventh graders," says the teacher in Joe Todak, "are the most satisfactory age to work with... because it is the creative approach, an expression of ideas, that counts. 7th graders are more open, less afraid of ridicule. The older a student becomes, the more he is inclined to tighten up - to become afraid to express his ideas. I attempt, in class, to gear art work to the individual. And it can be done even if the child is scientifically inclined - or engineer-minded." "An artist, says the artist in Joe Todak, "will never get anywhere if he paints only what he sees. He must express his imagination."

In his attractive home on Nathaniel Boulevard, Delmar, Joe and Joyce have hung two samples of his latest work. They are modern impressionistics - worked on masonite rather than canvass - a medium Joe prefers. He feels that an artist will become outstanding in the field only when he perfects an original style that truly expresses his feelings. Joe gets more satisfaction from his modern work than from his truly delightful "scene portraits." A beautiful handcarved coffee table and an exquisitely sculptured figure,

AUGUST

PORTRAIT SPECIAL!

With every TWO Prints ordered, (Regardless of size) you will receive ONE EXTRA PRINT (SAME SIZE)

FREE!

(Pictures must be taken in August to be eligible for this bonus offer)

Pictures taken in YOUR Home OR at our Store

Come in or Phone for an Appointment

SHELLHAAS

Camera Store

Delaware Plaza Phone 9-1472

in their living room are further testimonials to his great talents.

When asked about his unusual accent, Joe laughed: "Even Susan, my daughter, asked me if I were born in this country. I have been accused of being almost every nationality. The truth is, we always spoke Czechoslovakian at home. However, Minersville was mainly an Irish town, so my English must be a blend of the two tongues."

Delmar is very fortunate to have a young man with the talent to inspire and guide youngsters in art. His own three children love to spend rainy days looking through his art books and creating their own work. "I can't keep enough paper in the house," Joyce says. "I am not artistic but I do feel all of my children have inherited a love of art."

Although Joe feels he has matured in his art work since moving to Delmar, he has an ambition that stems back from his high school days. He would like to do a painting of St. Thomas, the patron saint of the parish. With the new rectory being erected, we hope he will be asked to do this.

NO MONKEYS!
PLENTY OF BIRDS!
FULLER'S PET SHOP
TELEPHONE 9-3309
Cor. Lincoln & Dela. Aves.

FLOWERS for all Occasions
Delmar Nursery
454 Dela. Av 9-856
A.P. Verstandig, Prop.

Our Readers include the people who live in:

- | | |
|-----------------|------------------|
| Delmar | Elsmere |
| Slingerlands | Voorheesville |
| New Scotland | New Salem |
| Westerlo | Rensselaerville |
| Glenmont | Van Wies Point |
| Feura Bush | Clarksville |
| Unionville | Meads Corners |
| South Bethlehem | Selkirk |
| Ravena | Lawson Lake |
| Beckers Corners | Bethlehem Center |
| Cedar Hill | South Albany |

SPOTLIGHT is published by Spotlight, Inc., 187 Rowland Avenue, Delmar, New York; Charles E. Walsh, Jr., President; Tracy F. Walsh, Secretary-Treasurer. Mailing Address: Delmar, New York.

CAMP PINNACLE SCHEDULE

The public is invited to Camp Pinnacle on the Mountain top above Thatcher Park. From August 9-16, the Gospel Light Press will conduct an intensive program. The speakers will be as follows:

Dr. Cyrus Nelson, President, Gospel Light Press - Saturday at 7:30 p. m., Sunday at 8:15 p. m.; Rev. and Mrs. Thomas Tepley, Associated with Gospel Light Press - Sunday at 11 a. m.; Rev. Warren Filkins, Northern Baptist Seminary - Sunday at 4 p. m.; Mrs. Ethel Barrett, Story Editor Gospel Light Press - Sunday at 7:30 p. m.; Rev. Dean Dalton, Director Education Services -

Monday through Thursday at 10 a. m., Monday at 7:30 p. m.; Mrs. Edith MacKay, Art Director Child Evangelism - Monday through Thursday at 2 p. m.

The subjects of the various speakers at different times Mon-through Friday from 9 a. m. to 9:30 p. m. will include Bible Study and Techniques, Story Telling, and Plannelgraph Backgrounds. There will be a Galilean Breakfast, a Puppet Demonstration, a Watermelon Party and a film - "Faith of our Families."

Spotlight Classifieds do the job

Hi-Quality
MID-SEASON
CORN
Smaller Kernels - Sweeter

HOME GROWN LUSCIOUS
TOMATOES

Look for our WHITE stand
and BIG Van Allen
Farms SIGN!

VAN ALLEN FARMS
Route 9-W-First farm north of
Jericho Drive-In
Telephone ROger 7-9101

Your Local Agent
F. X. Cedilotte
INSURANCE
BUDGET PAYMENTS
Delmar, N.Y. 9-4754

**ASH AND RUBBISH
REMOVAL**
CHUCK DE GRUSH
9-1287

**von Bank's
TV SERVICE**
4-5887
Quality, Responsibility, Honesty

Ralph S. Butler & Sons
Incorporated
"All Forms of Insurance"
252 Dela. Ave., Delmar 9-4581

Give Your DRIVEWAY
A NEW LIFE WITH
"Knight"
**DRIVEWAY
SEALER**

Cost **\$5.95**
(For average Driveway)



HILCHIE'S TERMINAL HARDWARE
9-3941 Elsmere at the Light We Deliver

FINAL CLEARANCE

McMULLEN DRESSES

NOW \$10 - \$12 - \$15 - \$22

ROSE MARIE REID and CATALINA SWIMSUITS
UP TO 1/2 PRICE

EVAN PICONE and other SKIRTS NOW 1/2 PRICE

ALL SUMMER DRESSES NOW \$3 and up

**All Men's Summer
SUITS, JACKETS, SLACKS**

20% to 40% OFF

COHOES MFG. CO.

COHOES, NEW YORK

Open Tuesday and Friday evenings till 9 p. m. - Closed Monday

AIR CONDITIONED
RETAIL
SALESROOMS



SO! YOU THINK YOU LIKE ICE CREAM!

TRY THESE ON YOUR SWEET TOOTH

- | | |
|----------------------------|-----------------------------|
| No. 1-The Super Soda 55¢ | No. 4-Double Sizzle \$1.65 |
| No. 2-Sizzling Platter 85¢ | No. 5-Toll Gate Daiquiri 3¢ |
| No. 3-Bucket for a Buck | No. 6-Haystack 47¢ |

And, of course, Our regular Delicious Sodas, Sundaes, Sandwiches and Hamburgers

TOLL GATE

ICE CREAM AND COFFEE SHOP

Open till 11:30 p.m. (Fri. and Sat. till 12:30 a.m.)
Slingerlands, New York - On Route 85 out of Albany

IMPROVES ITS APPEARANCE,
PROTECTS YOUR HOUSE, TOO-



PAINT IT,
YOURSELF! SEE
WHAT PAINTING
CAN DO

Delmar

LUMBER & BUILDERS' SUPPLY, INC.



Phone 9-968 WE DELIVER 340 DELAWARE Ave. Delmar, N.Y.
PAINTS - HARDWARE - LUMBER - MASON SUPPLIES - ROOFING - INSULATION

DELAWARE Plaza

in Delmar

MODERN ONE-STOP SHOPPING

BACK TO SCHOOL

It's time to think about Back-to-School shopping . . . and there's only ONE place in this area where you can do it ONE-STOP! Visit the Plaza stores for everything from a pencil to a complete outfit!

There's always plenty of FREE parking at the FRIENDLY Delaware Plaza

Again . . . A Murroy-Simon, Inc. Project

SPOTLIGHT



Blanchard Post #1040, American Legion baseball team finished the first section of the Albany County American Legion league in sixth place in the nine-team loop. Their record was six wins and eight losses.

The last four games of the second section of league play are as follows: Saturday, Aug. 9 - 2:00 p. m., Capital City at Blanchard, Bethlehem Junior High; Sunday, Aug. 10 - 2:00 p. m., Colonie at Blanchard, Bethlehem

If I were converting
to gas heat I'd
have Carl Fraser
do the job.

LAWN MOWERS SHARPENED

Pickup and Delivery

Taylor & Vadney, Inc.

303 Central Ave. 4-9183
Hours: Mon. 8-5, Tues. thru Sat. 8-9

THE SPOTLIGHT

Junior High; Wednesday, Aug. 13 - 6:30 p. m., Blanchard at North Albany, Mullen Park; Sunday, Aug. 17, 2 p. m.; Voorheesville at Blanchard, Bethlehem Junior High School.

TRI-VILLAGE



HIGHLIGHTS

By The Sage of Magee Field

As suggested last week, there have been many persons who contributed to our local Little League this year. On the credit side of the ledger there were some 300 boys who received sound baseball instruction. There were many hours of recreation for boys and parents. New friendships were made. However, it is a sound procedure to look at the debit side of the ledger.

At Magee Field this year the boys observed: (1) A manager hold up a game 15 minutes while he argued with the umpire; (2) An adult on one team shove an adult on another team; (3) A boy removed from the game by an umpire; (4) Other games

NEED A FAST CAR WASH?

TRY THE NEW
MINUTE MAN

590 CENTRAL AVE., ALBANY

SIDING!

ALUMINUM - ASBESTOS - ASPHALT - WOOD
Roofing, all types, flat roofs a specialty - Gutter repairs
GENERAL CONTRACTING - UP TO 30% SAVINGS

Phone 9-1563 - Free Estimates - Fully Insured - Phone 9-1563

MACK'S HOME IMPROVEMENT Co.

New Scotland Avenue and Route 32 in Feura Bush

(Lowest possible prices consistent with the best in materials and workmanship)

HOME-GROWN!

TOMATOES CORN BEANS
SQUASH LETTUCE CABBAGE

WOODRIDGE FARMS

Route 9-W, Glenmont John Geurtze, Prop. Phone 4-8903

stopped while the umpires warned boys about their behavior; (5) A father of a boy speaking to the mother of another boy in a manner that would be called anti-social behavior anywhere else. Any person can add to this list. In addition there have been long "harangues" at supposed board meetings about certain decisions.

The writer is not concerned about this past season except to use it as a means of building for the future. It would seem, however, that it would be wise if the Board of Directors and officers would set up the machinery to prevent these actions next year. One major step would be to set up a board of men without sons in Little League to render decisions that are needed. A second major step would be to warn all adults and boys connected with the League next spring that improper behavior will not be tolerated. It is Magee Field, not Hawkins Stadium or Yankee Stadium.

In the 1958 Little League Rule-book, Article XVIII, there is one simple sentence that says "The actions of players, managers, coaches, umpires and league officials must be above reproach."

Notes of the Game

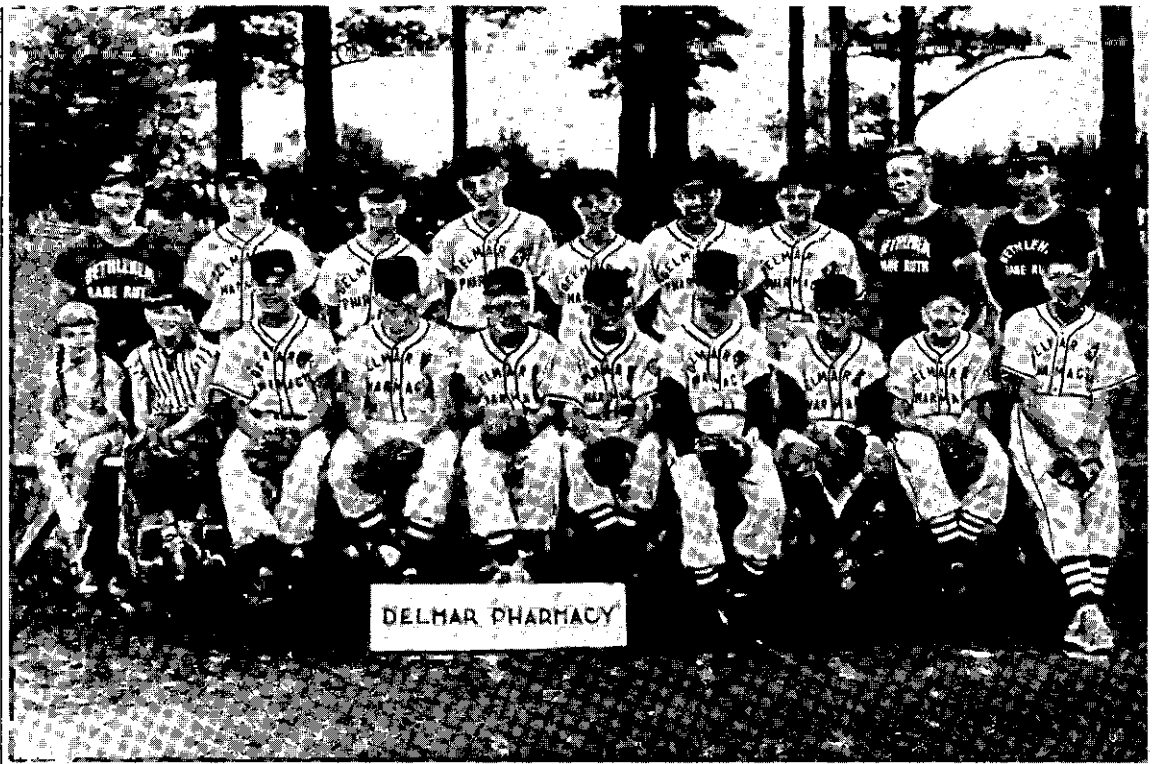
Inadvertently left out of the article last week were the following sponsors of Little League: Main Brothers, Mullens Pharmacy, and Pattersons.

A mistake was made in reporting the final standings of the Intermediate League. Main Brothers and Mullens tied for the 4th place with 6 wins and 9 defeats. Carrolls was last with 5 and 9.

Two men who should have been included on all all-star team are Jim Heaphy and "Ade" Arnold. Both of these men, neither of whom have a son in Little League, have given hours because of their love of boys and the game.

LAWN MOWERS SHARPENED
Pickup and Delivery
BENNETT GUN WORKS
559 Delaware Avenue, Delmar
Phone 9-1862

REMODELING
All Types Of
CARPENTER WORK
H. A. Ertel Ed. Hehre
9-1048 9-1198



ON TOP! This new-to-the-league Delmar Pharmacy Team in the Babe Ruth League, has been giving even the Champions, Handy Dandy, a rough time of it. Their record so far: 8 wins; 3 losses.

GENERAL INSURANCE
KATHARINE G. HERRICK
AGENCY
119 McCormack Road
Slingerlands 9-2763

SEPTIC TANK AND DRAINAGE SERVICE
SEWERS AND DRAINS
CLEANED ELECTRICALLY
TORK & PAFUNDA
Voorheesville
RO 5-7386 RO 5-2784

SUBSCRIBE \$1.00 . . 1 Year
TO THE \$1.50 . 2 Years
SPOTLIGHT \$2.00 . 3 Years

THE SPOTLIGHT
Delmar, New York
Please enter my subscription to the Spotlight for a period of
1 year 2 years 3 years
(Check ONE)
I enclose \$1 \$1.50 \$2
(Circle ONE)
Date.....

Name

Address

ATLANTIC
HEATING OILS

REDMOND & BRAMLEY
OIL COMPANY, Inc.
BRING YOU

Bethlehem Babe Ruth League
TEAM STANDINGS & HIGHLIGHTS

	Won	Lost
Delmar Pharmacy	8	3
Handy Dandy	7	3
Franchini Bros.	7	4
Vets	5	6
Barbers	3	8
Redmond & Bramley	3	9

men to face him! That's baseball, brother!

The Pill Pushers' Bill Hunter turned in 6 strike-outs in 3 innings of pitching against the Barbers.

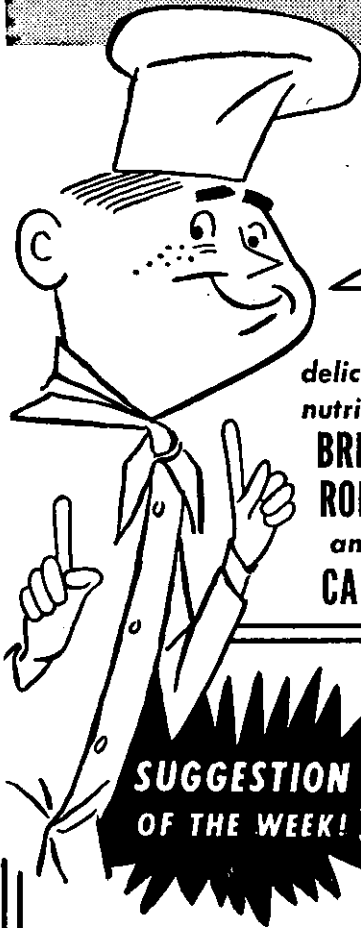
Annual Fracas: The coaches, managers and assistant coaches of the Babe Ruth and Little Leagues will play their annual softball game this Saturday, August 9, at 6 p.m. on the Junior High School diamond.

Revenge! The Barbers rared up on their hind leds and beat Franchini Brothers 12-7. Bob Rubin hit a home run with two on to really put the game on ice.

BIG Man-- The game that will have everyone talking far into the Winter was played last week. The fans in the stands were held spellbound by 5 innings of the most spectacular pitching ever seen on a local diamond. Franchini's Jack Terwelp walked the first man to face him . . . AND THEN retired, in order, the next 15

Atlantic Fuel Oil from Redmond & Bramley is SAFE - it's ECONOMICAL and Deliveries are SURE! Call 5-1433

If you give me 10 of your loaves, I will have three times as much as you. But if I give you 10 of my loaves, then you will have five times as much as I. How many loaves had each?



Freikofer's

"Known for Quality"

HANDY CHECKLIST of BAKERY TREATS

delicious
nutritious
**BREAD
ROLLS
and
CAKE**

**SUGGESTION
OF THE WEEK!**

Saturday, August 9

**CHOCOLATE
FUDGE LAYER**

79¢

Two-layer chocolate cake with vanilla butter icing on sides and topped with chocolate fudge icing.

**DAILY DELIVERY
RIGHT TO YOUR HOME
ORDERS TAKEN DAY OR NITE
PHONE ALBANY 3-2221**

Freikofer's

THURSDAY

Aug. 7

- Strawberry Rhubarb Pie 69c
- Jelly Donuts 39c
- Family Sandwich 24c
- Hard Seed Rolls 25c
- Buffet Rye 25c

FRIDAY

Aug. 8

- Blueberry Pie 69c
- Gold Creme Cups 29c
- Special White Bread 24c
- Whole Wheat Bread 25c
- Salted Rye 25c

SATURDAY

Aug. 9

- Apple Pie 69c
- Dunketts 32c
- Hot Dog Rolls 26c
- Hamburg Rolls 26c
- Pecan Coffee Ring 49c

MONDAY

Aug. 11

- Peach Pie 69c
- Sugar Cookies 39c
- Old Fashioned Bread 25c
- Cracked Wheat Bread 25c
- Raisin Bread 33c

TUESDAY

Aug. 12

- Cherry Pie 69c
- Lemon Layer 54c
- Milwaukee Rye 25c
- Salt Free Bread 25c
- Lite Diet Bread 29c

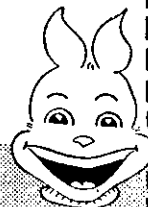
WEDNESDAY

Aug. 13

- VALENCIA RING 58c
- Cherry Layer 54c
- Glazed Donuts 34c
- Butter Rolls 29c
- English Muffins 20c

● Indicates items available every day. The above is not a complete list of available items. For further information ask your routeman or call the bakery

WATCH FREDDIE FREIHOFFER WRGB-TV
WEEKDAYS 5:45-6:00



RENT-A-CAR SERVICE

There is a new branch of the automobile business that may revolutionize our car-buying habits. It is called "car-leasing" and can best be described as car-renting on a long-term basis. The most important feature is the savings in capital investment. No longer will you have to tie up thousands of dollars in a car which day by day depreciates in value.

The car-lease concern buys in such quantities that they pay less for new cars, less for insurance, and less for maintenance. The customer sends a check once a month and in return he gets the benefit of always having a new car, of always having it in perfect condition, and of having the insurance and registration in order without any bother. If the car is used in business, car-leasing has another wonderful feature. The payments are fully tax-deductible - no more the headaches of depreciation.

How wide-spread car-leasing will become is an unknown factor today but the report is that car-leasing is enjoying an unprecedented boom.



During July and August Store Closes Saturday at 4 P. M.

Hamele's
LEAN

**STEW
BEEF**

lb. **85¢**

Use either for Stew or Hamburg Every Pound Ground to Order None Pre-Packaged

Del Monte
Vacuum Packed

COFFEE LB. 79¢



542-546 DELAWARE AVE.
2½ blocks South of 2nd Ave - Parking

DELMAR LIQUOR STORE

Four Corners *Delmar*
 Pete & Kaye Jones
 CALL 9-1725
 We Deliver

OIL BURNERS

TOUGHER AUTOMATIC HEATING

Gas & Oil Fired Installations and Service
 Gas & Electric Glass Lined Water Heaters
 Fuel Oil - Water Pumps
 -24 Hour Service-
 Get our prices and BE SURPRISED
 Glenmont Call 5-8450 or 6-0419

GERRITY LUMBER

NEW YORK'S LARGEST

This Week's Special

V'd MAHOGANY PLYWOOD
\$140.

RUBBER TILE

The Aristocrat of Floor Covering

9" x 9" **15c** Ea.
 10 Colors to Choose from *Reg. 28c*

Clark Carpet Co.

52 SHERIDAN AVE.
 ALBANY - PHONE 5-3418

COMMUNITY AMBASSADOR

LETTER

Dear Spotlight:

I have been with my German family for a week now and today I have received the great honor of being considered a part of the family. In Germany there are several ways to say you. There is the polite or "Sie" form and the familiar or "du" form. The polite form is used the majority of the time and the familiar form is used only for close friends and members of the family. It is an important day indeed then when you are first addressed as "du" instead of "Sie." Today at noon my family paid me this honor. We were all seated at the table eating our dinner when Frau Kuhl leaned over to me and said, "Elizabeth, we would be very pleased if you would allow us to call you "du" and if you would address us in a like manner." I looked at my German brother and sister and they both nodded their heads and smiled. Yes, they would both like that very much, they said. Oh, I can't begin to tell you how pleased I was! I thanked them as calmly as I could and proudly used my first "du" in conversation. As the day progressed I occasionally forgot my new honor as I talked with my family, and they soon were making a game of my struggles with the "du" form. If I forgot and used the polite form they would wrinkle up their noses and say "Who?" We'd all laugh then, and I'd start my sentence over.

Today has been important for another reason, too, though, and for a reason equally as wonderful to me. After supper while I was in my room getting ready for bed, Frau Kuhl came in as usual to wish me a pleasant night's rest. Tonight, however, she took me

COME AND SEE
 This Month's Sales
 1/3 to 1/2 OFF!

-OPEN SUNDAY-

Glenmont Garden Center

Cor. Bender Lane & Rt. 9-W
 PHONE 5-8575
 Art Airey Mike Essex

BUSINESS & PROFESSIONAL Telephone Exchange

72 Delaware Avenue
 24-hour Service 9-3524

Schnurr & Wood

Feeds - Seeds - Fertilizer
 Hardware & Garden Supplies

Carmote Paints

WATER SOFTENING SALT
 We Deliver Delmar 9-1878

... the ideal car for the small family or
 for that SECOND CAR
 the all new

RAMBLER AMERICAN

(Cars in stock and all ready to go!)

AMERICAN
 Big Car Room,
 Ride and Comfort

EUROPEAN
 Small Car Economy
 and Handling Ease

MADE IN AMERICA FOR AMERICANS

STUDLER'S SALES AND SERVICE, Inc.

"YOUR RAMBLER DEALER"
 Phone 9-923 242 Delaware Avenue, Delmar, N.Y.

Summer Services

1. TRAVELERS CHEQUES provide a safe way to pay when you're away.
2. *A SAFE DEPOSIT BOX protects the valuables you leave behind.
3. LOAN SERVICES to finance your vacation.
4. BANKING BY MAIL provides an easy way to make deposits during the summer.
5. Prepare for your vacation next year by opening a VACATION FUND ACCOUNT now.

THE NATIONAL COMMERCIAL BANK AND TRUST COMPANY

*Delmar Branch 9-4714 Elsmere Branch 9-4132
 Ample Parking Space
 Friday Evening Banking Hours 6-8 P.M.
 (At Delmar Branch Only)
 Member Federal Deposit Insurance Corporation

OPENING SOON

TRI-VILLAGE SLIMLINE

-Relax and Reduce in Comfort and Complete Privacy-

- REQUIRES:
- No Disrobing
 - No Diets
 - No Exercise
 - No Steam Baths
 - No Hand Massage



- HELPS YOU:
- Look Your Loveliest
 - Relieves Aches & Pains
 - Increase Circulation
 - Beautify Your Posture
 - Firm Flabby Muscles

... A COMPLETE SLENDERIZING TREATMENT ...

WATCH THE SPOTLIGHT FOR OUR OPENING DATE




Vacation Money Available NOW!

UPSTATE LOAN CO., INC.
 2 Delaware Plaza, Elsmere
 Licensed pursuant to Article IX
 of the Banking Law
 Tel. 9-911 - Loans \$25 to \$500



WATCH
 for the opening of our
 NEW
BOYS' DEPT.
 in time for that
 "BACK-TO-SCHOOL"
 SHOPPING

FOUR CORNERS, DELMAR
 PHONE 9-4511

LETTER (From Page 7)

by the hand and with a warm handshake smile at me and told me that she would be very pleased if I called her mother as Barb'I and Peter did. I thanked her for her thoughtfulness and told her that I would be very happy to call her mother. "Good," she said, "I never thought I would like to have an American daughter, but now I know I wouldn't be happy without one."

Tonight I am going to bed one one of the happiest girls in the world. As your Community Ambassador I may not be able to put an end to all foreign relations, but perhaps I will be able to leave behind me a bit of the American friendliness I have learned from living in the town of Bethlehem. Auf wiedersehen my friends!

Your Community Ambassador
 Betty Tinney

WOODCO
VENTDOR
 (Jalousie Door)



Made from Kiln Dried Ponderosa Pine
 from **\$38.**

Come down, see them on display. Best looking and practical door you've ever seen. No more need for TWO doors!

BETHLEHEM LUMBER Co.
 GLENMONT
 At the intersection of Route 32 and 144
 PHONE 62-2335

EXPECTANT PARENTS TO ATTEND CLASSES

A new series of classes for expectant parents sponsored by the Visiting Nurse Association of Albany will begin Tuesday, August 12, 1:30 - 3:30, at 245 Lark Street.

There are eight classes in a series extending over a period of eight weeks. All expectant parents are cordially invited to attend to learn about care of mother and baby.

Teaching methods include lecture periods, demonstration baby bath, practice periods, films, and group discussion. On completion of the classes, a diploma is granted.

FOWLER'S LIQUOR STORE

SEE GEORGE OR HARRY FOR BETTER SPIRITS

We Deliver

Theatre Building
 333 Delaware Ave 9-2613

'Tis not easy
 -an ad each week to write-
 One which will strike a note of good height.
 But with a product that is sure . . .
 Like CORNED BEEF, with fine cure . . .
 'Tis many a customer Quite often - we lure!

MC CARROLL'S SUPER MARKET
 SINCE 1921
 272 Second Av., Albany
 The **CORNED BEEF PALACE**

KENWOOD MILL STORE

Summer Weight Blankets—discontinued lines

100% wool, a whisper of weightless warmth, in rose, green, blue, yellow or white.
 Size: 90x108 . . . **\$13.98**
 80x90 . . . **8.98**
 65x90 . . . **6.98**

100% Acrilan, moth-resistant, shrink-proof. Colors: Rose, green, blue, yellow or white.
 Size: 80x90 . . . **\$6.98**

Baby Blankets—discontinued lines

90% rayon, 10% nylon — bound all round with acetate binding. Colors: Blue, bud green, yellow, pink or white.
 Size: 36x50 . . . **\$2.98**

Camp Blankets

70% reprocessed wool, 30% wool. Ends finished with durable overstitch. Colors: Brown, maroon, navy blue.
 Size: 60x84 . . . **\$5.98**

Blankets—excellent for Gifts

90% rayon, 10% nylon, ends bound with acetate bindings. Colors: Red, Blue, White
 Size: 80x90 . . . **\$6.98**
 65x90 . . . **5.98**

Just Across the Bridge, RENSSELAER
 Open Daily and Saturdays 8:30 Until 5
 PLENTY OF FREE PARKING SPACE



Church Calendar

BETHLEHEM LUTHERAN Church
Cor. Elm and Murray Aves - Rev. Lawrence Heuchert, 440 Kenwood Avenue, Telephone 9-1615.

SUNDAY,
8:30 Matins Service
10:00 a.m. Morning Worship
TUESDAY, 10:30 a.m. Adult Bible Study
AUGUST 18-29-Vacation Bible School

DELMAR PRESBYTERIAN CHURCH, Rev. George H. Phelps. Sunday Services are held in the Delmar Masonic Temple, Kenwood Avenue and Adams Street

SUNDAY: 9:15 a.m. Worship and Church School through Grade 6. Nursery care for children under 3. 5 p.m. Junior and Senior High Youth Fellowship with supper each week. Also Church School classes, worship and fellowship program. 7:30 p.m. Adult Bible Study course at 25 Rowland Avenue. Teacher: Dr. Theodore G. Brown.

DELMAR REFORMED CHURCH, Delaware Avenue - Rev. Dr. LeRoy C. Brandt.

SUNDAY:
Worship Service at 10 a.m.
Dr. LeRoy C. Brandt
Services broadcast over WROW

GLENMONT COMMUNITY Church (Reformed), Weiser Street, Glenmont - Rev. Harvey W. Noordsy, Minister.

Month of August: 10 a.m. Combined Worship of First Reformed Church of Bethlehem, Selkirk, at our church. Nursery care each Sunday for pre-school children.

COMMUNITY METHODIST Church, Slingerlands, Rev. James R. Rhodes.

AUGUST:
Rev. Rhodes will preach each Sunday morning at 10. Nursery care for children 5 and under will be provided.

CAMP PINNACLE-18 miles south west of Albany, Route 85.

SUNDAY SERVICES:
11 a.m. - 4 p.m. - 7:30 p.m.
DAILY SERVICES:
11 a.m. - 7:30 p.m.

FIRST METHODIST CHURCH OF VOORHEESVILLE, Rev. Walter Taylor, Pastor.

SUMMER SERVICE-9:30 a.m. at Indian Ladder Drive-in. Special music.

ST. THOMAS CATHOLIC CHURCH Delaware Avenue, Delmar - Msgr. Raymond F. Rooney.

SUNDAY MASSES (In the Church) 7, 8, 9, 10 & 11
(In the Auditorium) 9, 10 & 12 noon.
WEEKDAY MASSES: 6:45 & 7:30.
SATURDAY MASSES: 8 & 9.

THE METHODIST CHURCH, So. Bethlehem. Rev. W. I. Cosman.

SUNDAYS-
9:45 a.m. Church School; 11 a.m. Morning Worship; 7 p.m. Youth Fellowship.

CLARKSVILLE COMMUNITY CHURCH, Rev. Charles W. Smith, pastor.

Church School at 9:45 a.m.
Worship Service at 11 a.m.

FIRST METHODIST CHURCH, Kenwood Avenue, Delmar - Rev. Arthur P. White and Richard Campbell.

SUNDAY, August 10-10 a.m. Divine Worship. The guest minister will be Rev. Albert M. Brockway, pastor of the Broadway Methodist Church in Schenectady. Sermon: "Is the Bible Out of Date?"

FIRST REFORMED CHURCH Bethlehem-Selkirk, Rev. Theodore W. Luidens, minister.

During the month of August, the congregation of the First Reformed Church of Bethlehem will worship at the Glenmont Community Church. The Rev. Harvey Noordsy will be in charge of the service through August 10. Rev. Theodore Luidens will be in charge on August 17, 24 and 31.

Bethlehem Lutheran Church
Corner Elm & Murray Avenues
VACATION

BIBLE SCHOOL

August 18 through August 29
9 a.m. - 12 Noon Mon. thru Fri.

EVERYONE WELCOME

Ages: 3 through 14

Call 9-1365 or 9-3155

General Auto Repairing

Automatic Transmission
Service

Collision Service

Worcester Power Mowers
Sales & Service

HILLTOP Collision Service

14 Grove Street, Delmar
PHONE 9-2540

NEW SALEM REFORMED CHURCH, New Scotland Road; P.O., R. D. 1, Voorheesville - Rev. John H. Austin, Pastor. Tel. RO 5-2698.
SUNDAY-10 a.m. Sunday School; 11 a.m. Morning Worship.

ONESQUETHAW Reformed Church, between Route 32 and Clarksville. Rev. Arthur Homberg, Pastor.
SUNDAY: 11 a.m. Church School; 12 Noon-Worship Service.

CLARKSVILLE GOSPEL FELLOWSHIP meets at the home of Rev. Wendell Hiltsey, Olive St. POplar 8-2631.

SUNDAY-7:30 p.m. Gospel Meeting.
TUESDAY-7 p.m. Jolly Teen Time
THURSDAY - 7:30 p.m. Bible Prayer Hour.

UNIONVILLE REFORMED Church Delaware Turnpike, Unionville - Rev. Louis H. Chisman.
SUNDAY: 10:00 a.m. Sunday School; 11:00 a.m. Worship Service

JERUSALEM REFORMED CHURCH, Feura Bush - Rev. Arthur P. Homberg, Pastor.

SUNDAY-9:30 a.m. Sunday School; 10:30 a.m. Worship Service; 7 p.m. Youth Fellowship.

MONTHLY-8 p.m. Ladies' Guild, 1st Monday; 2 p.m. Ladies' Aid Society, last Thursday; 8 p.m. Sunday School Teachers & Officers meeting, last Tuesday; 8 p.m. Consistory Meeting, last Monday.

NEW SCOTLAND PRESBYTERIAN CHURCH, Rev. Homer B. Silvernail.

SUNDAY, 10:30 a.m. Church Worship; 11:30 Church School; 7:30 p.m. Youth Fellowship.

ST. STEPHENS EPISCOPAL CHURCH, Elsmere Ave., Delmar - Rev. Charles H. Kaufuss.

SUMMER SCHEDULE:
Sunday:
8 a.m. Holy Communion
9:30 a.m. Family Eucharist (Nursery all summer at this service)

CHRISTIAN SCIENCE SOCIETY Delmar.

SUNDAY-11:00 a.m. Church Service & Sunday School. Masonic Temple, Kenwood Ave.

TESTIMONIAL MEETINGS: Every Thursday at 8 p.m.

BILL LANG SAYS -

LAST CHANCE

to get a new car until - ??

BEST DEALS ANYWHERE ON A NEW

CHRYSLER - PLYMOUTH - IMPERIAL
15 MINUTES FROM TRI-VILLAGES - WHERE
YOU CAN GET YOUR

Chrysler -- Plymouth -- Imperial

SERVICED BY FACTORY-TRAINED TECHNICIANS

**Prompt, Pleasant Service at the Home of One-Year
100 Percent Guaranteed Used Cars**

STOP IN . . . YOU'LL BE GLAD YOU DID!

AIRWAY MOTORS

CHRYSLER - PLYMOUTH - IMPERIAL DEALER
RENSELAER, NEW YORK 4-2183

TELEPHONE
76-8-2143

SPOTLIGHT CLASSIFIEDS

TELEPHONE
PO-8-2143CLASSIFIED
BUSINESS SERVICE

BABY SITTING

BABY SITTING at 50¢ per hour.
9-4898.

BEAUTICIAN (Your Home)

BEAUTICIAN to give permanents,
etc. your home after 5. 4-1923

BOARD for HORSES

HORSES boarded, reasonable.
Riding ring and trails available.
PO 8-2368.

BULLDOZING, GRADING

CELLARS, ponds, grading, etc.
Fill, shale and top soil. Jim
Salisbury. Call E. Berne 81-J3.

CHICKEN BARBECUING

CUSTOM Chicken Barbecuing for
Office Parties, Picnics, Private
affairs. 25 and up. Call John
Geurtze, Woodridge Farms. 4-8903.

FLOORS

INLAID linoleum, Formica and
linoleum tops. Sales and instal-
lation. Bartley's. 9-3190.

FUNERAL DIRECTORS

In Time of Need, Call
M. W. TEBBUTT'S SONS
176 State 12 Colvin
Alb. 3-2179 Alb. 89-0116
420 Kenwood
Delmar 9-2212
11 Elm Street
Nassau 8-1231
Over 107 Years of
Distinguished Funeral Service

LAWN AERATING

AERATING permits water, air &
fertilizer to reach grass roots;
cuts summer watering in half.
Jerry Jonas, 9-4632.

MACHINE RENTAL

CONCRETE mixer for rent. 9-008.

SUCCESSFUL men with small
businesses (and large ones, too!)
use the Spotlight BUSINESS SER-
VICE.CLASSIFIED
BUSINESS SERVICE

PAINTING & CARPENTRY

FRANK SALISBURY, General Con-
tractor. Interior and exterior
painting, carpentry. Bailey Ave.,
Delmar. 9-1355.

PAINTING and/or PAPERING

ROY FLANSBURG, painting con-
tractor. RO 5-2712, Voorhees-
ville.PRECISION painters at recession
prices. Interior and exterior
painting. 9-2550.

PARTY DESSERTS

ULTIMATE in Party Desserts:
Schrafft's Ice Cream. Plaza Phar.

PHOTOS

PASSPORT, chauffeur, identifica-
tion pictures. No appointment.
Schellhaas, Dela. Plaza, 9-1472CANDID WEDDINGS - Call Ken
Lenseth after 6. 9-5119.

RADIO & TV REPAIR

BETHLEHEM Electronics offers
guaranteed service and sales of
TV sets, Radios, Phonographs
and other items in the electronics
field. 9-647.

SEWING & ALTERATIONS

EXPERT alterations & drapes,
done your home or mine. 8-4667.SEWING and alterations done
reasonable. 9-1270.

SIGNS

COMMERCIAL signs, counter cards
designed at reasonable rates.
PO 8-2143.

STONE & FILL

CRUSHED stone, shale, sand,
gravel; stone for retaining walls.
PO 8-2214 or after 6: PO 8-2641

TOP SOIL, FILL, ETC.

QUALITY LOAM - new lawns.
Call 9-3823.CLASSIFIED
BUSINESS SERVICE

TRUCKING, LIGHT

WE MOVE: Pianos, Freezers, Re-
frigerators, Stoves, Furniture,
etc. Bicycles repaired, will
pick up. Ken Lake, 9-4424 or
9-3297.

TRUCK FOR RENT

TRUCK for rent: 1½ ton rack with
dump, \$1.50 per hr. plus 5¢ per
mile. 9-3190MERCHANDISE
FOR SALEGE Electric Range, clock, auto-
matic oven, gd. cond., \$30. 9-4324.
HOUSEHOLD furnishings for sale,
1475 N. Scotland Road, Slinger-
lands, between 2 and 5 p.m.,
Friday, August 8.BRAND new Siebert baby carriage,
blue and white, complete. 62-4689WROUGHT iron glass top table,
28x48, 4 chairs, \$50. 9-848.8 COPPER screens, 28x55; 4 cop-
per screens 24x43; 12 matching
storm windows, all for \$35; 9x12
blue rug & pad, perfect, \$35.
9-3732.SILVER plated Holton trumpet &
case, good cond., \$65. 9-3026.FORMICA dinette set, table, 4
chairs, yellow, excellent, \$25.
9-3237.MAHOG. coffee table, oval, with
leather top, \$30. 9-3484.18" reel power mower, Briggs &
Stratton motor, \$80. 8-8556.BLONDE 21" TV, UHF, matching
table, like new, \$175; Zenith ra-
dio, \$10; 6 highball glasses &
tray, \$7.50; glass & copper salad
bowl, \$5; never used Irish linen
table cloth, doz. napkins, \$10;
antique Windsor chair, \$15; small
chest of drawers, \$5. Ravena
7-1293.WARM air registers: 4-16x20; 2-9x
12; 4-12x16, all \$5; French door
3x7, \$4; window 24x52, \$5; 130-
gal. tank, \$2; 30 gal. water tank,
\$4. 9-060.2 LAWN mowers, \$5 ea.; iron gar-
den gate, 40"-, \$7. 9-2126.IRON furnace stoker, good. 9-1770
after 6.TWIN green chenille bedspreads,
like new, \$2 each. Also drapery
materials. 9-1279.LIVING room set, good, 2 pcs. ma-
roon mohair; 1 pc. barrel wing
chair, blue brocade, \$37.50; Wil-
ton 9x12 rug, dk. red bkgnd.,
\$20; dining room set, mahog.,
Duncan Phyfe, 0 pcs., good, \$75.
89-1200.MERCHANDISE
FOR SALEFINISHED: Pine & maple wash-
stand, \$10; Spindle crib, \$7; UN-
FINISHED: Dutch oval table, \$5;
Antique chest of drawers, \$10;
chairs & rockers, \$1.50 each.
RO 5-2634.BED outfit, \$22; Vanity \$22; Iron
bed, brass trim, \$11; Walnut re-
cord cabinet, \$9; Coffee tables
\$3 to \$10; TV ant. \$4.50; large
table lamps, \$6.50; New window
screens, \$.80; Micrometers, \$1.50;
New 9x12 rug & pad, \$110; New
Lewyt vac., \$48; Ven. blinds, \$2;
Misc. household. Must sell this
week. RO 7-3420.

30x80 screen door, \$2. 9-3463.

DESK, newly built, unfinished or
finished to buyer's desire. Phone
POplar 8-2168.3 BEDS-Walnut 4-poster, perfect,
complete, cost \$150; 2 metal ¾
beds. 6-1254 after 7 p.m.BEIGE wool rug, 6½x8 ft., with
hall runners to match, 15 ft. by 33
inches, \$40; Duncan Phyfe style
coffee table, glass top, \$15; Kel-
vinator 9 cu. ft. refrigerator, ex-
cellent condition, \$50; Breakfast
set, yellow formica top table,
extra leaf, 2 chairs, \$20; 3-piece
polished chrome cannister set,
extra bread box, \$5; Universal
tank vacuum cleaner, attachments,
\$10. 9-3257 from 10 a.m.-5 p.m.FRIGIDAIRE, 5 yrs. old, \$65; 3
assorted lamps, 50¢ to \$1; Foot
locker, \$3. 3-5273.MAHOGANY China cabinet, good
condition. 9-1051.WALNUT double bed, complete,
\$50; Matching 4-drawer dresser
with mirror, \$25; Mahogany apt.
dining table with pads, \$50.
9-2456.TWO Wilton rugs 8'4"x10'7" with
new rubber back cushion; 4 win-
dow screens 30"x62½", 1-36"
by 62½"; Martin automatic reel,
X102. POplar 8-2690.ROTOTILLER for garden tractor,
\$25. 5-8712.PRACTICALLY new water softener
with guarantee, \$150; large brass
kettle (for wood box) \$35; large
picnic table, \$5. RO 5-2900.9x9 umbrella tent, heavy duty, \$40;
Recorder for PA system or radio,
cost \$129, sell for \$60. 9-2607
after 5.5-PIECE place setting, service
for 5, of perfect genuine Prin-
cess China, guaranteed open
stock, \$80. 2-5166.DELTA 8" saw & planer with
stand on casters, 1/3 hp., almost
new, \$250. 9-1361.3-9" electric fans, \$7.50 each.
9-1361.OLD antique China closet, over
100 years old. 9-1597.TAPPAN gas range, excellent, \$35
9-4230.

CLASSIFIEDS

MERCHANDISE FOR SALE

UPRIGHT practice piano, \$35; Mahogany bedstead, pineapple 4-poster, good cond., \$35. 5-4204.
PARAKEET cage and training set, \$4.50; Aqua plane, \$15; brass prop, 25/30 hp. outbd., \$12. 9-1593.
ANTIQUES-Cherry chest of drawers - pine chest - bench - cradle - chairs - spinning wheel - candle mold. Ravena 8-5301.

MERCHANDISE WANTED

DINETTE set with 4 chairs; canister set; step end table. 9-3145.

REAL ESTATE FOR SALE

BIG summer place, mostly furnished, 8 acres land. East Beme 63J4.

REAL ESTATE FOR RENT

FURNISHED 2½-room apartment \$65 with garage. Seen evenings or weekends. 9-3940.
WARNER LAKE-small fully equipped waterfront camp. \$35 wk. 9-2684.
NEWLY decorated 2-bedroom cottage. Country living. Close to town. Call 4-8691.

ROOMS FOR RENT

ROOM for rent, on bus line, large. 9-3309.
DELMAR-room with private bath. New Home. Nice for older man. Box 64, Delmar.

-CLASSIFIED ADVERTISING- Percentage Ads

GENERAL MERCHANDISE are only ads taken on percentage - NO established businesses, PLEASE! 10% on sales \$1 to \$101 - 5% \$102 to \$501 - 2% \$502 up. The MINUTE you sell an article, CALL US. These ads run for THREE weeks. Do NOT advertise elsewhere during that time. (NO used clothing accepted on % basis!)

-Paid Classifieds-
 All other classifications are accepted at 10¢ per word, \$1 minimum, payable in ADVANCE.

-Closing Deadline-
 Thursday, ONE WEEK prior to publication.

-PAYMENTS-
 Mail: Spotlight, Delmar, N.Y.
 Leave at: PLAZA PHARMACY

HELP WANTED FEMALE

STENOGRAPHER wanted. Must be good. Ship insurance and survey reports. Work in your own home. Clegg, 9-1993.

BABY sitter wanted from 11:30 to 3:30. 2 days one week; 3 days following week. 9-2774.

GIRL or woman to care for baby Monday, Wednesday and Friday, 8 a.m. to 12 noon, September to June. 9-2155.

BABY sitter wanted to care for 11-month old child 5 days per week. Call 9-5189 evenings.

BABY sitter, older woman, 4 days week, one child 4, two school children. Positively NO HOUSE-WORK. Transportation home furnished. 7:45 to 3:45. \$16 week one; \$20 week three. Box 64, Delmar.

WOMAN to care for three small children in home of teacher. Work on school days only from 7:30 until 4 o'clock. Begin September 9. Delmar, near corner of Cherry and Delaware Avenues. Call 9-5517.

BOATS & ACCESSORIES

26' STEELCRAFT sedan cruiser, Packard 6 cyl. 100 hp. motor with hydraulic controls, gyro and remote controls, steer from any position in boat. Hot and cold water, head, galley with cupboard, 3-burner gas stove, sink, Formica dinette set. Sleeps 4 in 2 cabins. Foam cushions. Automatic bilge pump, blower & compass. Engine overhauled last summer. No sign of rust or corrosion in boat or engine. Carl Foster, Cedar Hill. RO 7-3050.

AUTOMOTIVE For Sale

SOME DEALERS have LOW overhead. We have NO overhead. Save 30% to 40%. Call Fred at Albany 3-9405.

Custom AUTO UPHOLSTERING Seat Covers

Bob's Auto Top Shop
 325 Delaware Avenue
 Delmar 9-3012

ALCOHOLICS ANONYMOUS
 P.O. Box 102, Delmar, N.Y.

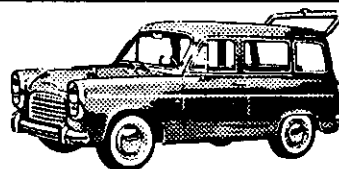
Incapability

You will invariably
 find us
 constitutionally incapable
 of anything less
 than our very best!

The connection is obvious - the result inevitable.



DOING ONE THING WELL - SINCE 1925



ESCORT

**For the Wagon Buyer
 in the Small Car Field**

-Up to 40 Miles on a Gallon-

Plenty of room . . . Imported car quality with American standard parts & service . . .

Delivered here fully equipped at Jarrett Motors, Inc.

Only **\$ 9.49** per week

JARRETT MOTORS, Inc.
 954 Central Ave., Albany
 Phone 89-5421

Did you know that
 you could call

9-1841



for
**24-Hour
 PRESCRIPTION
 and
 EMERGENCY SERVICE**
**DELMAR
 PHARMACY**
 At the 4 Corners
 Erich Krugman, Prop.

FORD

BUY LOW

THE LITTLE DEALER

WITH THE **BIG DEAL**

CRAILO MOTORS
E. GREENBUSH

at CRAILO

Spotlight Classifieds do the job

DRIVE THE HILLMAN HUSKY



For more room... plenty of space for 4 adults and 300 pounds of luggage! Flick down the rear seat and there's room for 300 more lbs. of cargo!

For more economy... costs \$1000 less than "low-priced" American station wagons... cost 1/2 as much to operate! Delivers 30-35 mpg!

For more beauty... clean, uncluttered styling... hand rubbed lacquer finish... long, low lines!

\$1549.

with your exchange

come in and drive a **HILLMAN**
HILLMAN/SUNBEAM

NEMITH

Auto Company
INTERNATIONAL AUTO SHOWROOM
RTE. 9 LATHAM
ST 5-8531

For a Deal that tops 'em all!!

GIFT FOR RPI

The United States Steel Foundation, of New York City, has made a grant of \$25,000 to Rensselaer Polytechnic Institute to augment the fund which the Institute will use in the construction and equipment of a thoroughly modern science center. R. C. Tyson, chairman of the Financial Policy Committee of the Board of Trustees of the Foundation, notified the college of the action of the board.

"We are most grateful for this generous addition to the fund," said Dr. Richard G. Folsom, president of the college. In expressing appreciation for the Foundation's grant, Dr. Folsom renewed his emphasis on "the importance the new center will have in Rensselaer's education of both scientists and engineers to meet the highest standards of a technological age."

Foreign Cars

- '58 Jaguar 3.4 sedan, demonstrator
- '58 Sunbeam Rapier
- '58 English Ford panel truck
- '58 Triumph sedan
- '58 Triumph estate wagon
- '58 Austin A-35 sedan
- '58 Austin-Healy roadster
- '58 English Ford Anglia
- '58 English Ford Prefect
- '58 English Ford Consul
- '58 Hillman Minx sedan
- '58 Hillman Husky
- '58 Jaguar XK150 roadster
- '58 MGA roadster
- '58 MG Midget sedan
- '58 MGA hardtop
- '58 Morris Minor 2-door convertible
- '59 Renault 4 CV sedan
- '58 Renault Dauphine
- '58 Triumph roadster
- '58 M.G.A. Roadster, radio, heater. Like new\$2,495
- '57 Volvo Sedan\$1,795
- '57 Lloyd sedan\$995
- '57 Hillman Husky Station Wagon\$1,395
- '56 MGA Roadster\$1,895
- '56 English Ford Consul sedan. \$1,195
- '55 M.G. TF Roadster\$1,695

AND MANY OTHERS
BANK RATES
UP TO 36 MOS. TO PAY
Greene County Motors

RT. 9-W, CATSKILL, N. Y.
OPEN EVES. TILL 9. TEL. 1582

Hauled to your well
or Cistern

WATER

IN TRUCK LOADS
MARSHALL GRAY
Ph. Schdy EL 5-0497
or EL 5-1708

PRACTICE MAKES PERFECT



NEW!

GOLF DRIVING RANGE

IMPROVE YOUR GAME!

GET THE "JUMP" ON YOUR FRIENDS!

*Fine Snack Bar *Pony Rides *Refreshments
ROUTE 9-W, GLENMONT OPEN 10 A.M.
4 Miles South of Albany 'TIL CLOSING

HOT WEATHER IDEAS!



Parking for 200 cars

phone 2-7788

TOM McMANUS

Proprietor

CRESTWOOD

Liquors and Wines

One Block Above Manning Blvd. at Whitehall Rd.

Permit No. 10
PAID
U. S. POSTAGE
Bulk Rate

