

A Merry Christmas



The Spotlight

DECEMBER 21, 1961

VOL. VI, NO. 50

\$1.00 PER YEAR

10¢ A COPY

Check Your Flashlight:

THIS IS THE LONGEST NIGHT OF THE YEAR

The most overlooked item in today's household is the common flashlight. This handy portable light so badly needed when emergencies occur, stays on a closet shelf for months on end without attention. To highlight the importance of the flashlight and to emphasize the need for regular flashlight inspection, December 21, the shortest day and longest night of the year, has been designated National Flashlight Battery Inspection Day by the makers of "Eveready" Batteries.

Why do flashlight batteries need to be inspected? According to research estimates prepared for Union Carbide Consumer Products Company, there is at least one "dead" flashlight in every household in the country today. If you never check it until your electricity goes off one stormy night, you are likely to have a useless flashlight on your hands at a time when you really need its light.

What can you do to make sure your flashlight will work when you need it? First, keep several flashlights on hand, strategically situated in places where you would need them most in case of emergency. Likely spots would be kitchen, bedroom, garage and basement.

Next, make sure you check these lights every few months to see that they are in good working order. If the bulb



Tonight, the longest night of the year, is no time to have flashlight trouble, reminds pert Pat Wittenberg, of Coeymans. The Eveready Girl, who is also a member of the Tulip Queen's Court, advises a check of all flashlights and bulbs to make sure they are working correctly.

fails to light or gives only a tiny glow, be sure to replace the batteries immediately with fresh ones.

How can you prolong the life of the batteries in your flashlights? Two ways, according to "Eveready" battery engineers. First, keep flashlights away from high temperatures as much as possible. Flashlight batteries are designed to operate best at 70 degrees F, normal room temperature. Higher temperatures can cause the batteries to lose some of

their energy. Therefore, avoid storing flashlights in hot places such as near the furnace or in overheated attics. Secondly, intermittent use of your flashlights will help prolong the useful life of the batteries. Continuous use over long periods causes the batteries to wear out more quickly. Turn your flashlight off when you no longer need the light. Make sure the switch works properly. Be sure to check to see if the light is turned off before you put it away.

Memo for you:

As publisher of the Spotlight, I take this opportunity to thank our many advertisers whose support makes this publication possible.

Our heartfelt thanks also to the Postmasters and Mail men who deliver the Spotlight to you so faithfully each week.

From the Staff and all of the many people who help produce this paper: A Very Merry Christmas to each and every one of our readers.

Robert G. King
Publisher

Candlelight Service

The Candlelight and Carol Service of the Delmar Reformed Church will be held Christmas Eve at 11:00 P.M. This annual event is anticipated by many of our community as an important part of our Christmas celebration.

After our many preparations and hard work it is good to sit quietly in the Church, to compose ourselves from the harried duties of the season, and to discover anew the deeper meaning of Christmas as we sing the familiar carols, listen to the Scripture story and rejoice with the choir in the blessings of The Nativity.

Carol Sing

The Slingerlands 4-H Club will sing Christmas Carols in Slingerlands on Saturday, December 23. This will be followed by a party at the Slingerlands Fire Hall.

**DISABILITY
BENEFITS
INSURANCE**

and

**Workmen's
Compensation
Insurance
Now Required
For Small
Employers.**

Starting January 1st, 1962, New York State Law requires that employers of even one person must carry both Workmen's Compensation and Disability Benefits Insurance.

Workmen's Compensation covers employees for injuries on the job. Disability Benefits Insurance covers your employees for illness or injury on their own time. Premiums are based on wages. Phone or write us for further information.

**ROSE
and
KIERNAN
INC.
INSURANCE**

30 LODGE ST.

ALBANY, N. Y.

PHONE HE 4-8141

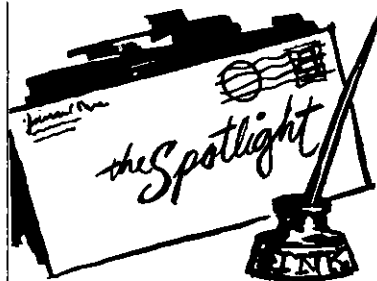
Copyright, Rose & Kiernan Inc., 1961

Star Fights TB



Lovely film star Natalie Wood joins the fight against TB with a Christmas Seal appeal via TV spots and a film trailer.

THE SPOTLIGHT is published every Thursday by Spotlight, Inc., 154 Delaware Avenue, Delmar, N.Y., Robert G. King, publisher. Deadline for news is Thursday afternoon, one week preceding publication; deadline for display advertisements is Friday afternoon.



Dear Editor,

Please know the appreciation of the Board of Directors and of the Central Committee of the Bethlehem Community Christmas Festival for the generous amount of space and prominence which you gave in this Anniversary Year of that ongoing activity which, affectionately, has come to be known as "White Christmas" & "the heart of the town."

I am sure that there was an

extra surge of good will and of work hours given in appreciation of the talents of Mr. & Mrs. Sydney Smith and of Mr. Rolland Truitt during the past 19 years. A special bow goes to our Rolly Truitt for keeping "our symphony" in tune the year.

And may I thank, too, those wonderful persons who so often sounded just the perfect pure note of encouragement and kindness to remind that the whole is greater than any of its parts.

Thank you again for your important contribution to a memorable twentieth anniversary for the Festival.

Ruth C. McHugh
General Chairman

**Fire Fifers to Present
Christmas Program**

The Village Fire Fifers, the Tri-Village Area's own fife and drum corps, will present its fourth annual Christmas Caroling exhibition on Saturday night, December 23. The group will visit the homes of area clergyman and corps' members, as well as the Four Corners in Delmar. The corps' annual Christmas party will follow the caroling, at the home of Mr. and Mrs. William Frueh in Slingerlands.

NOW!! your local
Appliance Discount Center
offers

**MAC DONALD
PLAID STAMPS**

on all  **APPLIANCES
TELEVISIONS
STEREO-PHONOS**

THIS WEEK'S SPECIAL!!
**SAVE \$151.95 on 13.6 cu. ft.
G.E. REFRIGERATOR-FREEZER
PLUS
4,480 PLAID STAMPS**

BUY NOW - START PAYING MARCH 1962

SUBURBAN APPLIANCE
205 Delaware Ave. Elsmere PHONE HE 9-3557

*Merry
Christmas*



Imported Gifts and Ceramics
1 Minute South of Exit 23
on 9-W
Top of Coming Hill
Glenmont, New York

**LARGE SELECTION
FOR
LAST-MINUTE
SHOPPERS!**

UNUSUAL VASES
SWISS FONDUE SETS
IMPORTED DEMI-TASSE
CUPS

TEAKWOOD ACCESSORIES
**JUNCO'S STONE ENDS
GIFT SHOP**

Open Noon till 9 P.M.
Mon. through Sat.

Adventures in Books

LIBRARY NOTES

Here's a tip, a hint, a prod in the right direction offered by the Delmar Public Library. Come in and browse for further ideas.

Folkart in Pictures by Karel Sourek is a collection of Czech, Moravian and Slovak ornamental folk art. Nature lovers will enjoy the color plates in Living Amphibians of the World by Doris W. Cochran. Edgar Whitney's book, Watercolor, the hows and whys, is a good book for the beginning artist.

Other books of interest are The Andes: Roof of America by Claude Arthand and Francois Herbert. Stevens, Songs of the Gilded Age, edited by Margaret B. Boni, Slums and Suburbs, a commentary on schools in metropolitan areas by James B. Conant and Where the Red Fern Grows, the story of two dogs and a boy by Wilson Rawls.

The children on your list will enjoy Joan Anglund's In a Pumpkin Shell, an ABC in A. A. Milne's book, The World of Pooh is a well-known favorite. Little House in the Big Woods by Laura Wilder is a wonderful story of a small girl on the Wisconsin frontier.

Some other gift suggestions are Cinderella by Marshia Brown, Barnaby and the Horses by Lydia Pender and Johnny Tremain by Esther Forbes.

Mrs. Rau and her staff wish you a happy season and remind you that the Library will close at 2:00 on December 23 and on December 30.

CYO to Skate

An "Ice Skating Party" at the RPI fieldhouse in Troy is planned for tonight, December 21, by the Jr. CYO of St. Thomas' parish, Delmar. Mrs. Herbert Myers has been appointed by the parish CYC to supervise the event.

STOP putting off your Christmas shopping **GO** shopping today



We wish to take this opportunity to extend to our many customers and friends

A Very Merry Christmas and Joyous New Year

BUTLER & BROWN, INC.
244 Delaware Ave
Delmar, New York
HE 9-4581

Happy Holiday
TO ALL FROM
C.M. GROVER
Stationers
10 DELAWARE PLAZA

FOR BEST SELECTION - FOR BEST CHRISTMAS BUYS
SHOP SPOTLIGHT ADVERTISERS EVERY WEEK!

Best wishes FOR A Happy Holiday

... and thanks a million to the many friends and customers who have made this past year such a happy one for us ...

Handy-Dandy Cleaners
240 Delaware Ave.
Elsmere
HE 9-4444

headquarters for **SPORTING GIFTS**

Authorized **BRIGGS & STRATTON** Service

CHARGE ACCOUNT

BENNETT SPORTING GOODS
Lawnmowers - Bicycles - Gunsmiths - Ski Shop

SPORTSWEAR Pendleton White Stag Dux-Bak Wool Rich S. E. Wood Bob Allen	Wilson & Spaulding SPORTING GOODS Toro Mowers Savage Mowers Lawn-Boy Mowers Schwinn Bikes Raleigh Bikes	Loading Tools Guns - All Makes Ammunition Scopes - Sights Fishing Tackle Bowling Archery	Northland Skis Golf Equipment Ice Skates Binoculars Athletic Shoes Gift Items Camping
--	---	--	---

561 DELAWARE AVENUE - HE 9-1862



The tots of the Slingerlands Nursery School entertained their mothers and younger brothers and sisters at a Christmas Party last Friday morning in Fellowship Hall at the Slingerlands Community Church. Mrs. Richard Brown and Mrs. Robert Bosworth, Slingerlands, were in charge of refreshments. The decorations were made by Mrs. Gerald Kowitz, Delmar. The musical entertainment was provided by the children under the direction of their teacher, Mrs. Marian Lugg, Delmar.

"MERRY CHRISTMAS"

We hope the Holiday Season brings joy and laughter to the young ones, warmth and cheer to the grown-ups, and best of all, that the memory of its joy and happiness stays with you throughout the coming year.

SPORTHAVEN LANES

OPEN LANES AVAILABLE DURING THE HOLIDAYS

417 Kenwood Ave., Delmar

Holiday Greetings
Ed Kinns
 ESSO Service
 Cor. Elm & Delaware Aves.

Merry Christmas
Veldhuis
Hair Stylists
 154A Delaware Avenue

Season's Greetings
CEDAR HILL GARAGE
 Authorized Imperial, Chrysler, Plymouth and Valiant Dealer
 RO 7-3069
 ROUTE 144 SELKIRK, N.Y.

See the Nativity Scene at the Red Schoolhouse

Tri-Villagers are invited to see the outdoor Nativity scene at John G. Myers' Red Schoolhouse at the corner of Western Avenue and Schoolhouse Road in Albany.

At the Myers downtown location on North Pearl Street, the beautiful windows contain custom designed, handmade figures which were created exclusively for the store.

In Time for Christmas

Mr. and Mrs. Harry G. Eyres, Jr., 19 Euclid Avenue, announce the birth of a daughter, Edith Lynn at Albany Medical Center. Mrs. Eyres is the former Ruth Cassavant of Delmar. The Eyres have two other children: Beth Ann 11, and David Austin, 8.

Season's Greetings TO ALL OUR CUSTOMERS!

WEBER BROTHERS INC.
 BUILDERS
 Delmar New York

Twas seven days before Christmas
 — And all through the Store
 People rushed through the aisles
 — To get values galore!
 The shopping carts filled
 — With Produce, Groceries and Meats,
 Cookies, Candies and Nuts —
 — OH, Such wonderful treats!

Mom, Pop and us kids
 — Christmas shopping were we,
 At the SUPER where SAVINGS,
 — Was so plain to see.
 Self service was easy,
 — With wide spacious aisles,
 And the clerks helped us onward
 — With great big bright smiles.

A Turkey for CHRISTMAS DINNER
 — Pop said would be nice,
 And Mom nodded yes,
 — When she saw the low price!
 A big plump 'ole fella,
 — a prize flavor 'lovin'
 Was fresh dressed — stuffin ready
 — Just place in the oven.

We came to the baked goods,
 — Nancy Lynn was our choice.
 "It all looks so god!"
 — Came from Pappa's deep voice.
 He said "How about it!"
 — And held up a pie.
 "Saint Nick will just love it!"
 — Sis said with a cry!

Then we came to the Ice Cream
 — Which all us kids love.
 I said "I like chocolate!"
 — Sis gave me a shove,
 Then she hollar'd Strawberry,
 — And Mom said Vanilla,
 Then Pop said Fudge Nut
 — For that hungry 'ole Fella!

It seemed like the time
 — Was just standing still,
 When we were saying "Hello!"
 — To the check-out named Jill
 Her smile so delightful,
 — In spite of the rush,
 And she pinches my cheek,
 — And I start to blush.

Mom paid her bill
 — and was winking at me,
 I could see by her gleam,
 — SUPER SAVERS were we.
 Jill said, "Just a Moment,"
 — There's more that you get!"
 "Here's your bonus of BLUE STAMPS
 — For the best STAMP PLAN yet!"

At last we were home,
 — and the groceries away,
 "Off to bed with you children,"
 — I heard Mama say
 Then I listened to Pappa
 — Just before he'd retire
 "You always save more —
 — AT GRAND UNION EMPIRE!



TURKEYS

20 TO 24 LBS.
 lb. **29**¢

16 TO 20 LBS.
 lb. **33**¢

10 TO 16 LBS.
 lb. **35**¢

Beltsville MIDGET TURKEYS 4 TO 8 LBS. **39**¢





Merry Christmas
Verotandig's
454 DELAWARE AVE., DELMAR
Tel. HE 9-4946



Season's Greetings
The Mele's
BEAUTY SALON
Delaware Plaza, Elsmere N.Y.

Merry Christmas

this is your Invitation

to visit **MYERS**

Answer Shop

Hard-to-find gifts for HIM and HER
... luxury gifts from all over the world ...
exquisite gifts chosen with discrimination and good taste.

Exclusively at
MYERS second floor

Always an exciting selection
of Children's Wear!

RED SCHOOL HOUSE
School House Road and
Western Ave., McKownville

Donna's Delighted



Lovely Academy Award winner Donna Reed, star of TV's "Donna Reed Show," displays 1961 Christmas Seals which are now reaching the homes of millions of Americans. Miss Reed portrays a doctor's wife in her television series. In private life, she is Mrs. Tony Owen and the mother of four children: Tony, Jr., 14; Penny, 15; Timothy, 12; and Mary, 4.

SPOTLIGHT CLASSIFIEDS

KNOWN FOR THEIR PULLING Power, Spotlight Classifieds are the answer in this area. Low cost, fast action! Call HEmlock 9-4949 now!

REVERENCE



*Perfect tribute
to a memory
dearly cherished*

To surround each funeral service with quiet beauty, dignity and deeply felt reverence is the purpose to which we are dedicated.

**APPLEBEE
FUNERAL HOME, INC.**
403 Kenwood Avenue
DELMAR, NEW YORK
HE 9-2715



Edward S. Berry

Edward S. Berry Promoted At City & County Savings

The City and County Savings Bank has announced the promotion of Edward S. Berry of Delmar to assistant vice-president.

Mr. Berry started in the bank as a teller 22 years ago, served in several departments and was manager of the uptown office when it was opened in 1951. The following year he was elected assistant secretary. He is a graduate of Albany High School and Manhattan College.

Mr. Berry and his wife, the former Marion E. Kenneth, live at 40 Fernbank Avenue, Delmar.

**Some Facts About Dec. 21,
The Longest Night of Year**

- The shortest day of the year
- The longest night of the year
- The winter solstice
- A full moon

Why:

The beginning of winter, called the winter solstice, takes place when the sun reaches the most southern point in its apparent seasonal journey up and down the sky, this year at 9:20 P.M., EST on Thursday, December 21.

Always the day of the winter solstice is the year's shortest with the year's longest night, because our part of the earth is as far above the sun as it ever gets. The slant of the sun's rays is at its most oblique angle giving us less and a briefer period of light.

Purely coincidental is the fact that this year there will be a full moon on 12/21. It will rise at 7:42 P.M., EST.

Astronomical miscellany:

...The tilt of the earth and its rotation around the sun cause our seasons.

...At the winter solstice, as at the summer solstice (June 21, 1961), the sun appears to "stand still" for several days.

That is, its noontime elevation Please turn the Page

Season's Greetings

TO ALL OUR CUSTOMERS & FRIENDS

HOPKINS APPLIANCES

239 Delaware Ave., Elmsere
Phone HE 9-4558

BE PREPARED FOR THE HOLIDAY SEASON NEW

MAYWOOD

Janitorial Service
Colonie

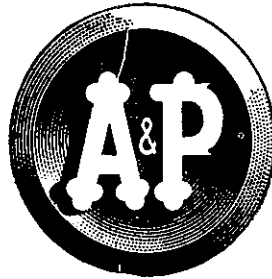
Professional-Commercial-Private
Clientele - Professional Workers
Day or contract
UN 9-5132

Elmsere Store open till 9 P.M. EVERY NIGHT THIS WEEK



Clip Coupon Below for 100 EXTRA PLAID STAMPS with Christmas-

TURKEYS



SUPER-RIGHT QUALITY, READY-TO-COOK, U. S. GOV'T INSPECTED

8 TO 15 LBS	LB	35^c
16 TO 19 LBS	LB	33^c
20 TO 24 LBS	LB	29^c

Bonnie the Plaid Lassie Says-
"Clip these coupons for MORE FREE STAMPS!"



100 100

100 Extra Plaid Stamps With Your Turkey!

This coupon good for 100 extra Plaid Stamps with purchase of an A&P, Super-Right Quality Turkey - redeemable only at any A&P Store that gives Plaid Stamps. Void after Sat., Dec. 23, 1961. Limit one coupon per turkey purchase. ()

100 100

100 Plaid Stamps WITH THIS COUPON AND THE PURCHASE OF A TWO-PAIR BOX OF Mellowood Nylons AT THE REGULAR PRICE VOID AFTER SAT., DEC. 23, 1961 LIMIT ONE COUPON PER CUSTOMER. ()

100 100

100 Plaid Stamps WITH THIS COUPON-AND PURCHASE OF ONE 9-OUNCE CAN OF TOP WIP AT THE REGULAR PRICE VOID AFTER SAT., DEC. 23, 1961 LIMIT ONE COUPON PER CUSTOMER. ()

FRESH-KILLED TURKEYS ARE ALSO AVAILABLE NOW AT A&P AT SLIGHTLY HIGHER PRICES

CHICKENS	4 1/2 TO 5 LBS LARGE ROASTING	LB	43^c
GEESE	SUPER-RIGHT QUALITY, 10 TO 12 LBS PLUMP, MEATY, READY-TO-COOK	LB	75^c
DUCKLINGS	TENDER, PLUMP Ready-to-Cook, 4 to 5 Lbs	LB	45^c
CAPONS	Genuine Super-Right Quality Ready-to-Cook, 6 to 8 Lbs	LB	59^c

SWIFT'S CANNED HAMS Fully Cooked Tender, Lean Skinless Boneless **4-LB CAN 3.39**

Super-Right Quality Cut From Young Porks	5-Rib Portion	7-Rib Portion	Loin Portion	Loin Half	Rib Half
PORK LOINS	LB 28 ^c	LB 33 ^c	LB 43 ^c	LB 53 ^c	LB 43 ^c
SAUSAGE MEAT	SUPER-RIGHT	1 LB PKG 39 ^c	2 LB PKG 75 ^c		

WELCH'S - GRAND WITH TURKEY Jellied Sauce	2 1 1/2 OZ CANS	49 ^c	36 TO 42 COUNT Fancy Shrimp	LB	95 ^c
SPECIAL OFFER Wonderfoal	FULL 25 FT. ROLL	29 ^c	SAU-SEA Shrimp Cocktail	3 FOR	1.00
JANE PARKER Stuffing Bread	1 LB 4 OZ Lard	29 ^c	SLICED Boiled Ham	LB	95 ^c
JANE PARKER Bread Crumbs	10 OZ CAN	21 ^c	STANDARD Oysters	8 OZ	79 ^c
BELL'S Stuffing Mix	1 LB PKG	43 ^c	CENTER CUT Pork Chops	LB	89 ^c
PEELED AND DEVEINED Shrimp	1 LB 8 OZ BAG	1.95	SUPER-RIGHT Bacon	LB	69 ^c

SEEDLESS - RUBY-RED **Grapefruit 10 FOR 49^c**

CAPE COD **Cranberries LB 23^c**

LONG GREEN Florida Cucumbers	4 FOR	29 ^c	U. S. NO. 1 Sweet Potatoes	2 LBS	25 ^c
CRISP, FRESH Pascal Celery	LARGE BUNCH	25 ^c	SWEET AND JUICY Emperor Grapes	2 LBS	39 ^c
SNOW WHITE Boiling Onions	2 LBS	39 ^c	IN THE SHELL Mixed Nuts	14 OZ PKG	49 ^c
WAXED Yellow Turnips	LB	5 ^c	BABY SIZE Walnuts	2 LB BAG	89 ^c

SUNNYBROOK GRADE A Fresh Eggs	LARGE DOZ	59 ^c	A&P FROZEN Broccoli Spears	2 10 OZ PKGS	39 ^c
SUNSHINE Cheez-Its	2 6 1/4 OZ PKGS	35 ^c	CALAVO GOLDEN Raisins	10 OZ PKG	29 ^c

Ritters Tomato Juice	2 QUART BOIS	49 ^c
Betty Crocker Cake Mixes	3 PKGS	1.00
Alcoa Aluminum Foil	75 FT. ROLL	85 ^c
O&C Boiled Onions	1 LB JAR	33 ^c
Cigarettes	REGULAR SIZE-POPULAR BRANDS PRICED FOR N.Y. CTN	2.29
A&P Fruits for Salad	1 LB 14 OZ CAN	53 ^c
A&P Mincemeat	9 OZ PKG	23 ^c
Sealtest Holiday Log	QUART CONTAINER	95 ^c
Yukon Beverages	(CONTENTS ONLY) 2 QUART BOTS	29 ^c
Warwick Chocolates	5 LB BOX	2.99
A&P Pumpkin	2 1 LB 13 OZ CANS	33 ^c
None Such Mincemeat	9 OZ PKG	29 ^c
Sultana Olives	LARGE STUFFED 21 OZ JAR	85 ^c
Excel Salted Mixed Nuts	14 OZ CAN	69 ^c
Warwick Chocolates	2 LB BOX	1.25
Christmas Stockings	8 OZ EACH	39 ^c
A&P Fruit Cocktail	1 LB 14 OZ CAN	37 ^c
Sweet Pickles	BOND DELUXE-TINY 16 OZ JAR	39 ^c



MINIT MAN
CAR WASH
590
CENTRAL AVE
ALBANY

von Bank's
TV SERVICE
HE 4-5887
Quality - Responsibility - Honesty

HOLIDAY SPECIAL!

**EGG NOG
ICE CREAM**



MERRY CHRISTMAS



**TOLLGATE
SLINGERLANDS**

Dec. 21 (Cont'd)

appears not to change in that time.

...The sun, vital to earth life, is the controlling star of our solar system. Its gravitational attraction keeps the other astral bodies in our solar system in their orbits.

...Although the sun is really only average in size, temperature and brightness compared to other stars, its nearness to the earth (a mere 96 million miles away) makes it appear to us tremendously large and bright.

...The sun is 400,000 times as bright as the full moon. It gives the earth six million times as much light as do all the other stars put together.

...Light from the sun reaches the earth in slightly more than eight minutes.

TV Star Hits TB



Andy Williams, singing star of television, records and night clubs, hits out against TB by plugging Christmas Seals on a special radio show.

**GOING,
GOING,
GONE!**

With all the speed of a rapid-fire auctioneer, a little Want Ad in this paper will sell whatever it is you wish to dispose of. Just phone us!

START

*earning dividends on
your savings at the
new rate of*

3 3/4%
a year

Beginning January 1, 1962, National Savings Bank will increase its dividend rate to 3 3/4% per annum, from date of deposit and compounded and credited four times a year, provided present satisfactory earnings continue. Start earning this new rate on your savings. Clip the coupon attached and mail it with your deposit today.

A GOOD BANK TO START WITH . . . A GOOD BANK TO GROW WITH

THE NATIONAL SAVINGS BANK

ALBANY, NEW YORK . . . TWO CONVENIENTLY LOCATED OFFICES



DOWNTOWN: AT THE CORNER OF STATE AND PEARL STREETS — OPEN THURSDAY EVENINGS UNTIL 8 P.M.
UPTOWN: AT WESTGATE SHOPPING CENTER, CENTRAL OPPOSITE COLVIN — OPEN FRIDAY EVENINGS UNTIL 8 P.M.

THE NATIONAL SAVINGS BANK



90 STATE ST., ALBANY, N. Y.

MAIL DEPOSIT

Open an account as indicated below
 Add to my account No. _____
Amount of deposit. \$ _____

NAME _____
ADDRESS _____
CITY _____
ZONE _____ STATE _____

NEW ACCOUNT INFORMATION:

Individual Account
 In Trust For _____
 Jointly With _____

Send Check or Money Order.

Cash should be sent by

Registered Mail Only.



Freikofer's

DELICIOUS BREAD, ROLLS & CAKE

SUNBEAM BREAD
COMPARE AND SEE THE DIFFERENCE
 Batter Whipped! No Holes! No Streaks!
 DAILY HOME DELIVERY
PHONE HO 3-2221



THURSDAY
 Dec. 21

- Dutch Apple Pie 69c
- Pone Italian 25c
- Butter Rolls 29c
- Old Fashioned Crullers ... 29c
- Canadian Oat Bread 27c

FRIDAY
 Dec. 22

- Coconut Custard Pie 69c
- King Bread 29c
- Butter Parkerhouse Rolls 39c
- Unsalted Bread 27c
- Raisin Bread 33c

SATURDAY
 Dec. 23

- LEMON TRUFFLE CAKE ... 79c
- Family Sandwich Bread . 24c
- Hard Seed Rolls 29c
- Honey Pecan Ring 59c
- English Muffins (6) 25c

MONDAY
 Dec. 25

*Merry Christmas
 To All*

NO DELIVERY TODAY

TUESDAY
 Dec. 26

- Fruit Cookies 39c
- Buffet Rye 27c
- Cracked Wheat Bread ... 27c
- Lite Diet Bread 30c
- Crullers (Plain or Sugar) 24c

WEDNESDAY
 Dec. 27

- NEW ORLEANS MOLASSES
 CAKE 65c
- Apple Pie 69c
- King Sandwich 33c
- Monk's White Bread 29c
- Cloverleaf Rolls 33c

SPECIALLY DECORATED CHRISTMAS CAKE \$1.49

Two layer Gold Cake, White icing, Red and Green coverettes on sides, decorated on top with Santa Claus, Bells and Xmas tree.

2 lb. Genuine Fruit Bar \$2.39

4 lb. Genuine Fruit Ring \$4.75

NEW TWIN-PAK

Two 2 lb. Gen. Fruit Bars \$4.75

SATURDAY, DECEMBER 23

Holiday Coffee Cake 69c

FRIDAY & SATURDAY DECEMBER 22-23

Pumpkin Pie 69c

Mince Pie 69c

Apple Pie 69c

Party Butter Cookies . . . pkg. 4 doz. 89c

CHOCOLATE or RASPBERRY CAKE OF THE MONTH \$2.49

Select your order of Christmas Rolls from our delicious variety.

PLEASE NOTE!

Order from your Route Salesman or Phone the Bakery on Wednesday, December 20th, all special orders for delivery on Saturday, December 23rd.

HO 3-2221

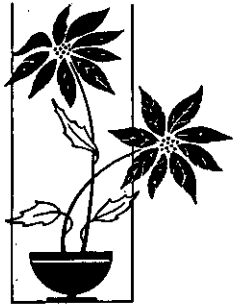


● INDICATES ITEMS AVAILABLE EVERY DAY

The above is not a complete list of available items. For further information ask your routeman or call the bakery.

**WATCH "FREDDIE FREIHOFFER"
 WRGB WEEKDAYS 5:15-5:30**





POINSETTIAS * *
CHRISTMAS *
CACTUS, etc. * *

Wreaths
RED RUSCUS - BOUGHS

LAUREL ROPING - CHRISTMAS TREES

PRICE-GREENLEAF, INC.

14 Booth Rd., Elsmere
 Next to A&P Mkt.
 HE 9-9212

SEED AND
 GARDEN
 STORE

Store Hours TO CHRISTMAS:

9 A.M. to 9 P.M. Monday through Friday

Saturdays till 6 P.M.

Sundays 10 A.M. to 4 P.M.

A Fantasy - Or COULD It Come True?

As the Christmas spirit begins to catch us in its spell and busy fingers go to work on yuletide decorations and exciting doings in the home, let your imagination take you a step further.

What would happen if all the good work and effort that went into the magical production of "White Christmas" infected each and every citizen to transform our suburban area to a replica of the real Town of Bethlehem in spirit?

A dream . . . 'Crossing the bridge from Albany Normansville lies quiet and peaceful beneath us with cheerful Christmas lights a back-ground for the carolling

music that floods the air. The music wafts us gently up the hill past the "flats," where every window shines a benediction on the traveller. The Plaza is a myriad of tiny lights expressing the Christmas theme. The Elsmere corner, garlanded with boughs of spicy Spruce and Balsam, softly plays music that carries through the spirit of Christmas. At the Four Corners, again, the same musical theme comes clear through the crisp, winter air. . . and all the Neon signs are dimmed so that the gigantic tree is seen alone, gay, majestic, and magical. Then, through to the Town Hall, which

Farmer in the dell. Farmer in the dell. Run pell mell to Farmer in the dell.

JUST IN TIME FOR CHRISTMAS
OPEN 9 A.M. 'TIL 10 P.M.—7 DAYS A WEEK
COME IN YOUR CAR . . . COME AS YOU ARE

FARMER *in the* DELL

DAIRY DRIVE IN NOW IN DELMAR —
 246 DELAWARE AVE., COR. BOOTH RD.

HOMOGENIZED VITAMIN "D" MILK

GOOD UNTIL DEC. 31, 1961
87¢ PER GALLON
 IN CARTONS
 5¢ LESS WITH COUPON BELOW

GOOD UNTIL DEC. 31, 1961
83¢ PER GALLON
 IN GLASS PLUS DEPOSIT
 5¢ LESS WITH COUPON BELOW

FOR THE HOLIDAYS

EGG NOG 62¢ PER QT.

MODIFIED SKIMMED MILK

Fortified with 2000 USP units of Vitamin A, and 400 USP units of Vitamin D, per quart, with added milk solids.

80¢ PER GAL.

STATE BRAND ^{73 SCORE} **BUTTER 79¢ Lb.**

2 Loaves of **FARM STYLE BREAD 49¢**

LARGE STRICTLY FRESH GRADE "A" **EGGS 54¢ PER DOZ.**

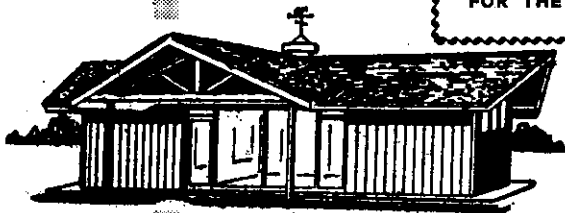
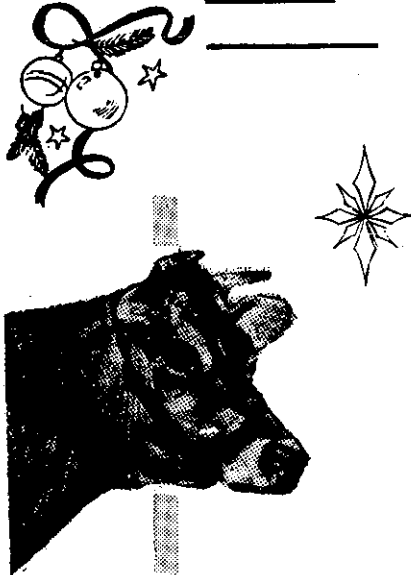
FOR THE HOLIDAYS WE SUGGEST HOOD'S NUT ROLL — CAKE ROLL — BAKED ALASKA — SULTANA ROLL — PARISIAN PARFAITS

COUPON-

5¢ OFF ONE GALLON OF MILK

OFFER GOOD UNTIL 12/31/61

REDEEMABLE AT ALL LOCATIONS



Watervliet—East Greenbush—Westmere—Loudonville

as every year, is a perfect picture of the Nativity scene. . . but more! The parking lot is a fairy land to entice every Child to really and truly BELIEVE all over again.

Hundreds of citizens laboured lovingly to build a miniature town - complete with Inn and Stable. Real animals breath smokily in the frosty air. Shepherds, Wise Men, angels, et al. realistically mingle in the crowds. Church choirs sing sweetly as children from Albany, Troy, Schenectady, Ravena, East Greenbush, Cohoes gaze in wonderment at this heavenly sight. . .


Children, and grown-ups too,

need to see as well as feel . . . to know the glory of the time of Christmas and to imagine it must have been so many, many years ago.

From the moment of crossing the Normanskill, a feeling could grow and build to the climax of the manger scene. It could enhance the Christmas of everyone who saw it, putting Christ back into Christmas.

What more appropriate town could take on this community venture than our own, which already holds the name of Bethlehem? Take it on, not as lavish-money-spending job, but as one in which the time and la-

Please Turn the Page



THE FABRIC GARDEN
HE 9-4432
244 Delaware Ave. Delmar New York



Season's
GREETINGS
D.A. BENNETT
Delmar, N. Y.

Season's
Greetings
PLAZA PHARMACY
At Delaware Plaza HE 9-4451



Traditional Gift Box

An assortment of fine Chocolates and Butter Bons, featuring a variety of delicious centers.

1 1/2 lb. box \$2.25

2 1/4 lb. box \$3.25



Exquisite Little Ambassadors

The finest miniatures you can buy, hand-dipped milk and dark Chocolates with cellophane index to make your selection.

1 lb. box \$2.00 2 lb. box \$4.00

L.J. MULLEN PHARMACY
M. C. Mullen, Prop.
256 Delaware Avenue Elsmere, New York
HE 9-2413 - PHONES - HE 9-5411

YOU CAN SAY

"Merry Christmas"

simply, easily and economically **EVERY WEEK** in the year with a

GIFT SUBSCRIPTION

to

Spotlight

We will mail a gift card in your name to arrive just before Christmas. Just send us your gift list with names and addresses of friends to whom you wish to send the SPOTLIGHT together with your own name and address. Enclose \$1 for each 1-year subscription and mail it to: The Spotlight, Delmar, New York.

A Delightful Place To Shop
BLUE CHURN COUNTRY STORE

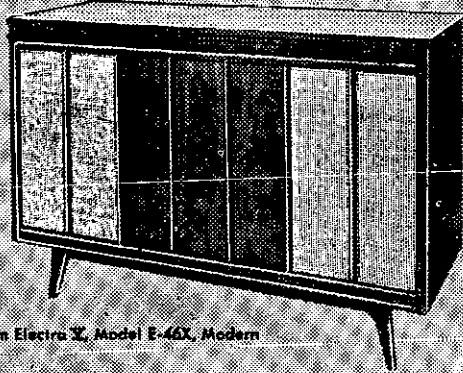
South Westerlo, New York

SPECIALIZING IN EARLY AMERICAN REPRODUCTIONS

Open Daily and Sundays, 9 A.M. to 12 P.M. - 1 to 5 P.M.
 Evenings 7 P.M. to 9 P.M. through Christmas

A ONE-YEAR SUBSCRIPTION TO THE SPOTLIGHT IS \$1.00
 Send your Dollar to 154 Delaware Avenue, Delmar

First
 WITH FM STEREO
 On ALL 1962 Consoles



Custom Electra X, Model E-46X, Modern

FISHER

Stereo FM-Multiplex • Stereo FM-AM • Stereo Phonograph

The FISHER Custom Electra X with its beautifully styled cabinets will add a new dimension to any room in which it is used. And its thrilling performance will be a constant delight to the music lover. The flawless reproduction of your stereo and monophonic records, the excellent reception of Multiplex and standard FM programs with the FISHER Wide-Band Tuner—these are but a few of the dividends the owner will enjoy in the years ahead with this superb instrument. Plan to see and hear it soon. *Mahogany, Walnut, Teak \$595.00*
Provincial, Early American \$645.00

Write For Beautiful 20 Page Brochure

Hi-Fidelity Center

DIVISION OF AUDIO-VIDEO CORP.

Convenient Terms to fit
 ANY BUDGET

Open Every Evening
 TILL 9 P.M.

324 Central Avenue, Corner Quail Street - Albany HO 3-1167
 The Capitol District's Exclusive FISHER Dealer

Fantasy? (Cont'd)

bour of every citizen made it a community dream . . . a gift to our children, ourselves, and the many others, who would travel to find this spirit of Christmas!

No expense was spared. There were no tawdry costumes or cheap effects. It was Christmas as it must have been so many hundreds of years ago.

Is this only a dream? Or could it happen? Men in the Tri-Village area have long desired to make Our Town of Bethlehem an inspiration at Christmas Time. If a union of the Chamber, and the Lions, and the Kiwanii, and the Volunteer Firemen, and the Veterans and the Auxiliaries of all these units and many more could band together to do an outstanding job, the Town of Bethlehem would become a byword in Albany County and maybe in New York State.

**CHRISTMAS GIFTS
 FOR YOUR PETS . . .**



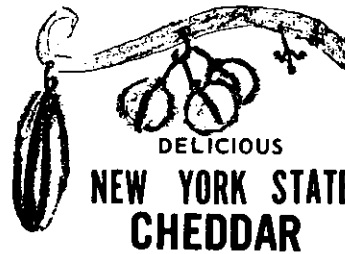
**Dog & Cat Stockings
 Baskets Cushions Toys**

PRICE-GREENLEAF INC.
 SEED & GARDEN STORE

14 BOOTH RD., ELSMERE
 HE 9-9212
 (Next to A&P Mkt.)

90 HUDSON AV., ALBANY
 HE 4-0815

It's time for CHEESE!



DELICIOUS
**NEW YORK STATE
 CHEDDAR**

1st properly aged shipment
 just arrived:
 3lb. wheel \$3.50
 5 lb. wheel \$5.25
 delivered locally



PIETER VAN DERZEE
 Phone RO 7-3098 or write
 Cedar Hill, Selkirk, N.Y.

**CHRISTMAS
 PARTY
 SUGGESTIONS**

One of our best friends has an annual Christmas Eve party, which takes quite a bit of organization. However, she assures me, the benefits of a quiet Christmas Day are well-worth the effort.

Her family attends mid-night services together on Christmas Eve. Afterwards, they corral as many neighbors and friends as possible to return home with them. There, they enjoy a warming glass of wine, while the children gather about the tree, opening their presents. A buffet table is laid with a turkey, still warm from the oven, cranberry jelly, and thin, buttered slices of white and rye bread. Over the years, she has found, it is safer to serve hot chocolate or Postum, rather than coffee at this time of the night. Then, all to bed and her family can sleep, well-nourished and unexcited, 'til noon and later on Christmas Day. And there she has it made! A big Christmas breakfast, a relaxing family day, and the traditional Turkey dinner, needing just a quick warm-up, plus a pan of Instant Mashed Potatoes (and they are one of the miracles of the late '50's), a vegetable and dessert, is ready for the table.

The organization includes preparing the turkey a day early, convincing everyone. - and that



Rod Kermani says . . .
 The Perfect Gift

A Lasting Beauty and
 Investment
**ORIENTAL
 SCATTER RUGS**
 from \$15.00

Available in all sizes & colors

ROD KERMANI

3905 STATE ST.
 (Albany-Scht'dy Rd. Stop 3)
 Scht'dy Albany
 EX 3-6884 IV 2-0457



means Dad, too - to take a nap after an early supper, and disposing of the gifts around the tree, in such a manner, that the young ones refrain from peeking until after they have celebrated the Coming of Christ in Church. Of course, my friend is a most efficient gal . . . however, it might be fun to see if it worked out well in your house.

Another party idea . . . one we enjoyed very much last year, can be given at any time throughout the year. Although the one we speak of was a New Year's Eve affair . . . it was not a

mid-night or all-night party. All the neighbors on both sides of the street were invited in for a friendly after-dinner drink . . . and it was fun to see how many in our small block, needed to be introduced. People, all dressed up at a party, show little resemblance to the bare-chested man, wearing shorts, who mows a neighboring lawn . . . or to the blue-jeaned gal, who weeds so industriously, as one drives past her house. This type of party can be as simple or as hostess desires. Coffee and fruit-

Please turn the Page



L. C. SMITH
Your Olixir Dealer



MERRY CHRISTMAS
DAIRY-TREAT LUNCHEONETTE
Delaware Plaza

SEND IN YOUR SPOTLIGHT CLASSIFIED AD ON THIS HANDY ORDER FORM

SPOTLIGHT, INC., 154 DELAWARE AVE., DELMAR, N.Y.

FILL IN BELOW PLEASE PRINT

10¢ per word; \$1 minimum. Phone number counts as one word.

CLASSIFICATION

DATES TO RUN

YOUR AD: _____

NAME _____

ADDRESS _____

PHONE _____

PAYABLE IN ADVANCE



Last Minute

GIFT SUGGESTIONS!

We offer an exciting array of useful, cheerful and distinctive gifts: handsomely packaged assortments of imported and domestic delicacies, sweets and fine foods.



S. S. PIERCE GIFT PACKAGES

A distinctive S.S. PIERCE package of fine delicacies

attractively priced from

5⁹⁶ TO 49⁵⁰

plus . . . Top Value Stamps!

See our exciting selection of **FANCY CHEESE GIFT PACKAGES**

Fancy cheese packages filled with large variety of imported and domestic specialties attractively gift boxed

priced from **2²⁹**

for successful holiday parties . . . choose **KRAFT ASSORTED HOLIDAY DIPS AND TASTY CHEESE DELIGHTS!**

SHOP TO 9 P.M. EVERY DAY INCLUDING SAT. DEC. 23rd *

Albany Public Mkt., Delaware Ave., Delmar



AT CHRISTMAS
To Our Friends

At this time of the year, one of the real joys is the opportunity to send greetings to our friends.

In sincere appreciation of our pleasant association, it gives us great pleasure to extend best wishes to you and yours. May the Holiday Season be a joyous one and the New Year bring you a full measure of success and happiness.

Sincerely,
WARNER PHARMACY
at the Four Corners

Prompt, Dependable
SERVICE
ALBANY PEARL TAXI
HE 4-2163



Merry Christmas

BROCKLEY'S
DELMAR TAVERN
AND RESTAURANT
367 Delaware Avenue, Delmar

Party Suggestions (Cont'd)

cake . . . or a bar and buffet of smoked turkey, with thinly sliced bread, for snack-making. Last week, there was a menu entitled "Scarlet Supper" . . . this would make another party if we change the football game . . . to a Sledding or Skating outing for young adults, during the holiday vacation. It's really a scrumptious recipe.

Everybody loves a good party especially teenagers. A good party is exciting, stimulating to mind and spirit and is wonderfully entertaining. So let's have a ball in the form of a Coke-Tail Party. Now any party, from a home gathering for ten to a community dance for hundreds, can profit from cooperative planning among parents and the young people. So what-ever a rebellious early teenager may have to say on the subject, the first con-

sideration of a chaperon, parent or otherwise, is to be there at the party! In good health and in good spirits and in good time. After Elsa Maxwell has made this a standard practice. (And then some, but on to the party.) When does the party start? At any age group, we believe it is when the refreshments appear. . . Relax and enjoy yourself.



Screen star Jack Lemmon sees nothing funny about TB. He tells why on TV announcements urging use of Christmas Seals.

SOMETHING NEW!

Turn in the Stamps you DON'T want for the ones you DO want . . .

TRADING STAMP EXCHANGE

23 Vaughn Drive, Albany
E. Moran HE 8-5318

Merry Christmas

WOODRIDGE FARMS

John Geurtze, Prop. Glenmont

for the Holiday



School Girl
(Including College)

SPECIAL

Reg. \$15.00

PERMANENTS

\$750

NOW

(Available through Jan. 5)

SHIRLEE-SUE BEAUTY SALON

OPEN WED., THURS., FRI. UNTIL 9
Corner Elsmere Avenue and Delaware Avenue
PHONE HE 9-3237

CLARK CARPET CO. CARPET CONTRACTORS

Nationally Advertised
Rugs & Carpets for
Homes - Motels - Churches
Theatres - Offices
CLEANING - BINDING
REPAIRING

"Floor Covering Specialists"
FOR OVER 25 YEARS
- Expert Installations -

- INLAID FLOORS
- RUBBER TILE
- ASPHALT TILE
- PLASTIC TILE
- VINYL TILE
- COUNTER TOPS
- METAL MOULDINGS
- PLASTIC WALL TILE

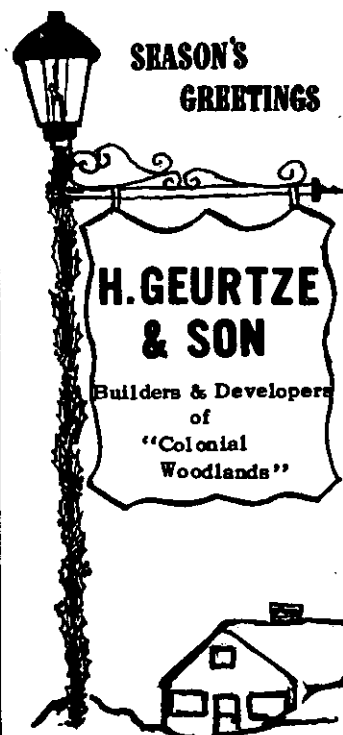
GUARANTEED WORKMANSHIP FREE ESTIMATES

Clark Carpet Co.

HO 5-3418

52 SHERIDAN AVE., ALBANY

SEASON'S GREETINGS



H. GEURTZE & SON

Builders & Developers
of
"Colonial Woodlands"



IT'S A WOMAN'S WORLD



Many job opportunities for mature women are available in New York State's business and industry, according to business authorities at a recent Job Horizons Clinic in Albany. "It was emphasized that up-to-date skills, a good appearance, and a cooperative attitude are valuable assets in getting and holding a job," says Deputy Commissioner Guin Hall, head of the State Commerce Department Woman's Program. The Woman's Program presented the Clinic jointly with the Albany YWCA and women's groups of the area. More than 350 wo-

men from five counties came for authoritative information on the kinds of jobs available, how to get and hold one, and to secure individual counselling in Workshops on different employment fields.

Miss Hall said authorities had also pointed out there are many opportunities for unskilled women workers, including such jobs as food checkers in restaurants, cafeteria, work, machine operators, filing, and mail clerk, as well as "beginner's" positions in industry.

Mr. Woodrow LaHaise, Acting Placement Manager of the New York State Division of Employment at 488 Broadway,

Albany, offered the services of the Employment Division in helping formulate plans of job-seekers whether or not they have worked before and mentioned the counselling and various tests which are available when necessary. He said the Division had many jobs available and that new ones were always coming in.

Speaking on work opportunities in the Fashion Trades, Mr. Morris Krupnick, General Manager of the Cheltingham Manufacturing Corp. of Troy, told of the free training in machine operation available to women in two-hour sessions two eve-

Please turn the Page



Do you always

bring her the

wrong things

on Christmas?

We're always ready with the right thing... at the last minute, sir. Come on in... we'll help you select it... gift wrap it for you, and send you on your way... full of good cheer and knowing that you'll bowl her over this time!

(And -whether we see you or not - A Merry Christmas to you and yours!)

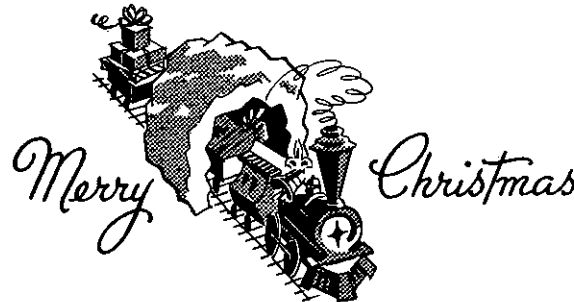
(Open every night 'til 9
Except Saturday)

TOWN AND TWEED
Delaware Plaza, Elsmere, N.Y.

EXPERT PICTURE FRAMING

Reasonable Prices

J.A. BLENDALL & SON
13 Steuben St., Albany
HO 3-8604



TOY FAIR

DELAWARE PLAZA

HE 9-5539

GIFT CERTIFICATE

give a gift of beauty

delight her with the perfect gift

A BEAUTY CERTIFICATE

Holidays Special

Soft PERMANENTS for TEENAGERS

\$8

House of Charm Beauty Salon
Gladys Histed Ann Luft

226 Delaware Avenue, Delmar (Near Lincoln Avenue) CALL HE 9-9202

At this 1961 Yuletide Season, we'd like to thank our many friends and customers for their patronage this season . . . and wish you all a Very

MERRY CHRISTMAS

Christmas Decorations & Trees

TREES: SCOTCH PINE, beautifully shaped and fire resistant
BALSAAM, Double and Triple, and **SPRUCE**

DECORATIONS: WREATHS, any size - **HOLLY TREES**
MISTLETOE - **ROPE GREENS**

Pick out your tree . . . and we'll deliver it!

VAN ALLEN FARMS

ROUTE 9-W - FIRST FARM NORTH OF JERICHO DRIVE-IN
Look for our **WHITE** stand and **BIG Van Allen Farms SIGN**
Telephone **ROger 7-9101** **OPEN SUNDAY**

CHRISTMAS GIFT IDEAS



Parking
for
200
cars

phone
IV 2-7788

TOM McMANUS

Proprietor

CRESTWOOD Liquors
and
Wines

One Block Above Manning Blvd. at Whitehall Rd.

WOMAN'S WORLD (Cont'd)

nings a week. He said that women with good manual dexterity can "earn while they learn" and emphasized that fashion factories in this area are airy and well-lighted and offer employees advancement opportunities.

Miss Mary Hennessey, Assistant Cashier of the National Commercial Bank & Trust Company, speaking in the Office Skills Workshop, said that banking offered 110 jobs for women with a high school diploma and typing skill. In the same Workshop it was pointed out that women with mathematical ability and 40-word-a-minute typing skill have opportunities to train as key punch operators, a rapidly increasing field.

The largest opportunity for part-time positions, according to Clinic authorities, is in selling, particularly in department stores; and evening positions of an unskilled nature, such as simple filing, are also available in some companies.

Among suggestions offered to job applicants by Mrs. Shirley Phillips, President of the Albany National Office Managers Association, were, "Don't worry about being nervous when

you're interviewed; everyone is: Your appearance is an indication of the quality of your work. When asked what work you would like, don't say, 'Most anything'; be specific!"

The Job Horizons Clinic is one of four different types offered by the Commerce Department Woman's Program, which provides free business counselling to New York State women.

Leads Against TB



Famed orchestra leader Guy Lombardo sets the tempo against TB in a special transcribed radio show supporting Christmas Seals.



SECURITY SUPPLY CORP.
475 Central Ave., Albany and
Selkirk, New York

*Greetings
Folks*

Jerome
Hair Stylist
46 State St.
Albany, N. Y.
HO 5-3572

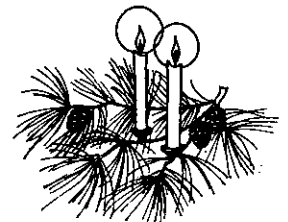
'62
**FORDS - FALCONS
T-BIRDS**



Buy **LOW** At
CRAILO FORD

E. Greenbush, N. Y. GR 7-9302

D. Le-WANDA
YOUR TRUSTED JEWELER



Christmas Greetings

ADVENT

by
Tracy
F.
Walsh



For the past few years, there has been a concerted drive to put "Christ" back into Christmas.

When you do any research on Christmas traditions and customs and discover the rich, spiritual basis for them, you wonder how we were able to go so far a-field from the true thoughts.

If we were to start the Christmas season, as we should, on the first Sunday of advent - we would bring into our homes "Advent Boughs." This custom began centuries ago in Austria-Bavaria. Your family, as a unit, would gather fir and spruce and arrange them in a vase containing water. These would be placed on a mantle with four medium or small red candles and one tall white one. The white candle is known as the "Gospel candle"... at dusk, it would be lighted by the man of the house. The furthest red candle would be lighted by the youngest or oldest person in the room. This simple ceremony would be repeated each Sunday with one more candle lighted. Then, all would shine brightly on Christmas Eve as the family gathers for the reading of the Nativity.

In Rome, Naples, and other Italian cities, images or pictures of the Blessed Virgin are often placed at street corners and in other public places during the Advent season. And in England, this custom is carried into the great homes, as the English Trinity Wreath is placed over the hall table where the mirror

Please turn the Page

Merry Christmas
CAT HAVEN
FOR CATS ONLY
Ethel Fay ROckwell 5-2715

*Merry Christmas
and
Happy New Year*
DELMAR BOOTERY

Happy Holidays to all
HE 9-1603
BULSON'S
1360 New Scotland Road
Slingerlands, New York

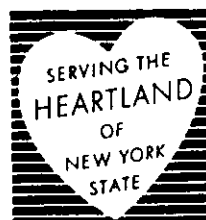


SEASON'S GREETINGS
and best wishes from all of us
at National Commercial

Extra Banking Hours

DELMAR OFFICE, 343 Delaware Ave.
Extra Hours — Fridays 6 to 8 P.M.

ELSMERE OFFICE, Delaware Plaza
Walk-up Teller Window Open from 8:15 A.M. daily



NATIONAL COMMERCIAL
BANK AND TRUST COMPANY

MEMBER FEDERAL DEPOSIT INSURANCE CORPORATION

**A HIGH PRICE
FOR YOUR CAR
NOT CONVERSATION**
FINE'S
1025 Central Ave.

Best Wishes of the Season

And to assure
complete satisfaction,
serve **ONLY Prime Beef**
during the Holidays

**YES! WE HAVE U. S. GOVERNMENT
PRIME BEEF**

MC CARROLL'S SUPER MARKET

Since 1921

THE CORNED BEEF PALACE

272 Second Ave., Albany



3 3/4%

PER ANNUM

The Board of Trustees of **MECHANICS EXCHANGE SAVINGS BANK** announces its intention . . . with continuation of satisfactory earnings . . . to declare a dividend at the rate of 3 3/4 per cent per annum for the period January 1, 1962 to March 31, 1962, on all deposits.

*Interest Payable from Day of Deposit
Compounded Quarterly*



**Mechanics Exchange
Savings Bank**

ALBANY, NEW YORK

47 STATE STREET - 450 BROADWAY 111 WASHINGTON AVENUE
STUYVESANT PLAZA OFFICE - WESTERN AND FULLER ROAD
MEMBER FEDERAL DEPOSIT INSURANCE CORPORATION

ADVENT (Cont'd)

usually hangs. It frames a Madonna print and again a tall white candle burns before it. The odor of the greens and the lovely picture framed in the flickering candle light make a holy and beautiful custom to bring into your 1957 homes.

The feast of the Holy Nativity incorporates various heathen festivals, as it was only natural that relics of Pagan practice should survive as traditional Christmas customs. One of the oldest of these, which nowadays seems the most English of them all, is the decking of the home with Evergreens. This was customary at the Roman festival

of Saturnalia and also among the northern peoples at their mid-winter feasts. Its origin is lost in the maze of antiquity, but it is likely that it was an offer of hospitality to the spirits that were supposed to haunt the leafless wood. The custom was that no matter wherever else the evergreens might be placed, a spray of berried holly should always appear at the window.

In the northern countries, mistletoe was a symbolic plant-believed to bring fertility to animals, to people, and to the ground. At this time, clad in white garments and with great ceremony, the priests went out into the woods in search of the "sacred mistletoe." The chief priests cut huge boughs with a golden knife and gathered it in his white robes, so that it might not touch the ground. He then carried it to the roofless temple where it took a leading part in their mystic rites. Centuries later, in England, long before the Christmas tree was known,



SEASON'S GREETINGS

DELMAR BAKERY

366 Kenwood Avenue, Delmar

**PAY YOUR GAS BILL
ANNUALLY?**

Of Course Not!

**WHY PAY INSURANCE
ANNUALLY?**

Pay by the month the business-like way

Charles B. Clarke

General Insurance
331 Delaware Turnpike
Delmar R.D., New York
PHONE PO 8-2000

division of **KEMPER INSURANCE** Chicago 60



**WATCH
REPAIR**

FINE

WATCH CLOCK
and JEWELRY

REPAIRING

HARRY L. BROWN

275 Delaware Ave., Delmar
HE 9-4578

1823 Western Ave., Westmore
HE 8-8094

Joyous
Greetings



**Marcel's
FABRICS**

331 CENTRAL AVENUE at Quail



**SEPTIC TANKS
DRAIN FIELDS, SEWERS
WATER LINES
FALLOUT SHELTERS
SNOWPLOWING**

Gas and Electric Water Heaters

Plumbing Fixtures and Hot Water
Heating Installed - Gas & Oil
Furnaces Replaced

FRANK M. VADNEY & SON

Van Dyke Road, Delmar, N. Y.
HE 9-4716 HE 9-2645

the mistletoe was still the traditional favorite when used in a "kissing bunch." The family contrived a sphere of spicy evergreens and mistletoe on Christmas Eve, as it was considered unlucky to bring holly into the home before that time. Three big barrel hoops were slipped one inside the other and tied. Then they were wound with garlands of pine, ivy, yew, rosemary, or boxwood. In the center, a big bunch of mistletoe was hung and the trimmers gathered to watch as it was suspended from a hook in the ceiling. After that, it was (and I quote from an anonymous source) "kiss as catch can through the holidays and when a man catch his woman, he may kiss her until her ears crack or she will be disappointed if she is a woman of any spirit."

This custom of kissing under the mistletoe seems to be peculiarly English although it may be a survival of a Scandinavian custom of pre-Christian antiquity. The mistletoe was considered so sacred at that time, that if enemies met casually beneath it in the forest, they laid down their arms and maintained a truce until the next day. Thus may have grown the practice of hanging mistletoe over a doorway. Anyone who enters, therefore, comes in peace and friendship to be sealed with a friendly greeting.

The Druids also held the mistletoe to be sacred. It was used to cure every disease and as an antidote to every poison. It supposedly rendered cattle prolific as well as caused all who bore it to be safe from witchcraft.

And Virgil gave us Mistletoe as the golden Bough whereby Aeneas by plucking it, was enabled to descend into hell and return safely.

Then, Norse mythology decreed mistletoe should be sacred to Freyja, the Goddess of love, whose tears became the pearly berries of the fateful plant. And because it grows neither on the earth or under the earth, it must always be hung high, as an emblem of love over death.

And even today, ladies, when your master claims the privilege of the mistletoe, it has not its proper virtue, unless it has been cut with a golden knife; also, the extent of the said privilege is measured only by the number of its berries, one of which should be plucked for every kiss taken.

Many other plants figure largely in the symbolism of the holi-
(Please Turn the Page)

TOYS

And **SEASON'S GREETINGS**

from

**P & B
Variety Store**

HEmlock 9-1380
4 Corners, Delmar

**HOWARD
JOHNSON'S**



Best Wishes

SOUTHERN BOULEVARD
AT THRUWAY EXIT NO. 23

**LAST MINUTE,
MRS. SANTA?**

Let Tad's help. We'll gift-wrap and get ready those last-minute gift pick-ups you'll want for the men and boys on your list.

Tad's has hundreds of gifts that men like . . . and dozens of suggestions where you don't have to worry about knowing the right size: like linen hankies, stretch socks, jewelry and all sorts of special gift items.

Come in, come in! Tad's will be open till 9 on Saturday night . . . and if we don't see you before the long, happy weekend . . .

HAVE A VERY MERRY CHRISTMAS!
- from all of us at Tad's

Season's Greetings

*"Through this door
pass the finest people
our Customers . . . our Friends"*



*As we approach the threshold of another year
our thoughts
turn gratefully to those
whose courtesy, good will
and loyalty
have helped make our
progress possible.
In this spirit
we extend to you the
Season's
Greetings*

VETS Body Shop & Garage

**N.Y.S. Official
Inspection Center**

L & H

Brake & Front End Service
100 Adams Street, Delmar
HE 9-3083 HE 9-3083

**Complete Brake & Front End
Service for Trucks - Cars**

**Power Brakes - Hydraulic
Brakes - Vacuum Brakes**

BRAKE DRUM TURNING
Wheel Alignment
Wheel Balancing

**Guaranteed Work - Reasonable
Rates - Emergency Service**
Leonard Price Prop.

**LAST MINUTE GIFT SUGGESTIONS!
SALE**

**GROUP OF: French Purses, Key Cases,
Wallets and Cigarette Cases -**

Were \$5.00 to \$10.00

Now - 3.50 to 5.00

MEN'S BELTS of finest leather. Priced from \$2.50 to \$15.00

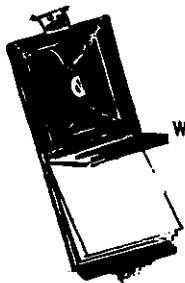
MEN'S WALLETS from \$3.95

WOMEN'S Wallets & Key Case Sets from \$5.00

SECRETARIES from \$3.50

Solve any

Gift Dilemma with a **MAGIN'S** Gift Certificate



Magin's

EST. 1870

222 WASHINGTON AVE.

Phone HO 2-1371

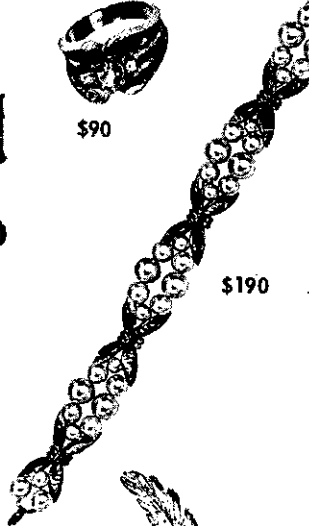
OPEN EVERY NIGHT TILL CHRISTMAS

JEWELRY

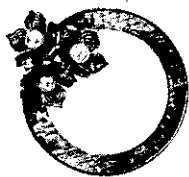
in 14 KARAT GOLD



\$90



\$190



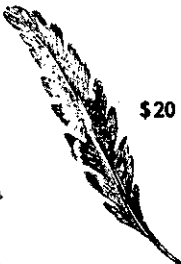
\$35



\$47.50



\$79



\$20

Fuhrman's inc.
JEWELERS • SILVERSMITHS

52 STATE ST., ALBANY

ADVENT (Cont'd)

day season. For example, Folklore and Legend are rich in beliefs of the holly and ivy. We find them the chief plants chosen for the early celebrations in England (some celebrants championing the holly, their opponents the ivy). Each believed his chosen plant would bring to the victor the things he most desired. The Ivy was known as the badge of the Wine-God, "Bacchus," and it was usually banished to the

outside of the house, while Holly adorned the inside. Again, some thought of the feeble ivy, clinging to its needful support, a sign of human feebleness clinging to divine strength.

The Holly, with its sharp prickles and blood red berries was thought to duplicate the Saviour's crown of thorns. It was generally believed that Holly was particularly hateful to witches and some of these legends are charming. In western England: "A maiden should place a sprig of berried holly on her bed on Christmas Eve, otherwise she might receive an unwelcome visit from some mischievous goblin." In Germany: "A sprig of Holly from a Church decoration was regarded as a charm against lightning." In Cornwall: "A sprig of Church Holly was thought to ensure good luck all year to its possessor." And from the English midlands comes my favorite: "According to whether he or she Holly (that is He (prickly) and She (smooth) leaves) is first brought into the home on Christmas Eve determines whether the master or mistress will rule throughout the ensuing year."

Our Christmas tree shows the influence of Icelandic Edda which told of the frequent use of the tree, with suspended colored balls, symbolizing fruits.

(Continued on page 23)

For a lasting gift ... SHOP

OUR SHOWROOM FEATURING AN UNUSUALLY FINE COLLECTION OF LAMPS LIGHTING FIXTURES SMALL APPLIANCES AND FIREPLACE EQUIPMENT

MEGINNISS ELECTRICAL CORP.

368 - 370 BROADWAY
Tel HO 3-3103

open SATURDAYS until 4 P.M.

FREE PARKING FOR CUSTOMERS OPPOSITE REAR ENTRANCE

During this Holiday Season.

"FOR A DELICIOUSLY DIFFERENT DINNER" - TRY -

Bartke's

RESTAURANT AND COCKTAIL LOUNGE

OPEN CHRISTMAS AND NEW YEARS DAY

MAKE RESERVATIONS FOR NEW YEAR'S EVE

Music - Dancing

Dial 756-1141

One Mile South of Ravens

Ask for CANDY CUPBOARD CHOCOLATES

"THE TAKE-HOME PACKAGE" and

PAGE and SHAW

"THE CANDY OF EXCELLENCE"

*Please come and help us celebrate the
25th Anniversary of*

Commercial Bank's Delmar Office

Tuesday through Thursday, December 26th, 27th and 28th



Much has happened since the 28th of December in 1936 when the Bank of Bethlehem joined the Commercial Bank family. It has been our very real pleasure to make many, many good friends while providing a progressive banking service geared to the financial needs of the people and businesses of the town of Bethlehem and the surrounding area.

A wide number of additional ways to serve you better have been introduced during this quarter century of service including Mortgage Loans, Installment Credit Loans, a complete range of Personal and Corporate Trusts, Investment Management, Educational Loans, Automatic Savings Accounts, Vacation and Christmas Club Accounts and other services. In twenty-five years Deposits have increased more than fivefold and, at the same time, our Loan Services to the community have increased dramatically.

It is our sincere wish that you will join us in celebrating our Twenty-fifth Anniversary in Delmar. You and your family are cordially invited to stop in for a visit and Anniversary Gifts during this celebration which will start on Tuesday, December 26th, and continue through Thursday the 28th.

Growing with the communities we serve

SILVER DOLLAR DRAWING

FIRST PRIZE 50 Silver Dollars

FOUR PRIZES . . . 25 Silver Dollars

ANYONE CAN ENTER

Just stop in Tuesday, Wednesday or Thursday, December 26th, 27th or 28th, between 9 a.m. and 2 p.m. and fill out your free entry blank.

WINNERS WILL BE NOTIFIED

FREE
Anniversary Souvenirs
for all visitors



**NATIONAL COMMERCIAL
BANK AND TRUST COMPANY**

MEMBER FEDERAL DEPOSIT INSURANCE CORPORATION

Complete Banking Services through 32 offices in Northeastern New York State.

THE NEW DELABAR 302 DELAWARE AVE.

★ TOMMY HAKIM Proudly Presents

"MUSIC IN THE MODERN MOOD"

BY THE ★ **NEW SOUNDS!**

THURSDAY THRU SUNDAY NIGHTS
ALSO EXTRA ADDED ATTRACTIONS
FRIDAY AND SATURDAY NIGHTS!

Call us now for your Buffets and Christmas Parties!

SPOTLIGHT CLASSIFIEDS TELL THE WORLD - HE 9-4949

BILDING SAYS


MERRY CHRISTMAS, JOY AND FUN, AND HAPPINESS FOR EVERYONE



FROM ALL YOUR FRIENDS AT ...

DELMAR LUMBER & BUILDERS SUPPLY inc.

340 DELAWARE Ave • Phone HE.9-9968



BOOKS
OF ALL PUBLISHERS
JOE'S BOOK SHOP
550 Broadway at Steuben

If It's FURS for Christmas See



Wilhelm's
Lark St at Lancaster
Albany

ADVENT (Cont'd)

It is a time to pause and reflect on the beauty of the simple tree, which so long ago was worshipped for itself. A perfect specimen was always searched out, cut, and brought indoors for the ceremony; an emblem of Life.

Of the many Tree Legends, I found a very wonderful one that dates back to the 9th century. It tells how St. Winfried went to preach Christianity to the people in Scandanavia and northern Germany. One Christmas Eve, these people were gathered round a huge oak to offer a human sacrifice, according to Druid rites. But St. Winfried hewed down the great tree, and as it fell, there appeared a tall young fir. When St. Winfried saw this miracle, he said to the people: "Here is a new tree, unstained by blood. See how it points to the sky. Call it the Tree of the Christ Child. Take it up now and carry it to the castle of your Chief. Henceforth, you shall not go into the forest to hold your feast with secret rites. Hold them within

RESERVE Now for New Year's Party

Dancing to Hap Hollis' Trio

\$5 Minimum No Cover

Favors and Noisemakers

Elmerian Restaurant
DELAWARE PLAZA
Uncle Peter, Your Host Phone HE 9-9844

Season's Greetings

JOIN OUR NEW 1962 CHRISTMAS CLUB

(open Thursdays 'til 8 P.M.)

The HOME Savings Bank

Member Federal Deposit Insurance Corp.

UPTOWN 77 CENTRAL AVE. DOWNTOWN 11 NO. PEARL ST.





the walls of your own home, with ceremonies that speak the message of peace and good-will to all. A day is coming when there shall not be a home in the north, wherein on the birthday of Christ, the whole family will not gather around the fir tree in memory of this day and to the glory of God."

Prophetic St. Winfried! Although it was a long time, almost ten centuries, before his prophecy came true.

The Christmas tree, as we know it, first was recognized in Germany as an established custom in 1605. But it did not become popular until far in the 18th Century. It was naturalized in England, when it was set up for the first time in Windsor Castle by Prince Albert in 1841. The Puritans in America resisted forcibly all Christmas religious festivities until far into the 18th

(Please Turn the Page)



"Best wishes for a
Merry Christmas
 and **Happy New Year**
 to our many friends and customers."

★
MAIN-CARE

MAIN BROS. OIL CO., INC.

318 Delaware Ave.

Delmar, N. Y.

BAKER OIL CO., INC.

318 Delaware Ave.

Delmar, N. Y.

S. V. DAY OIL CO., INC.

Route 143

Ravena, N. Y.



make
 tracks
 to your headquarters for

HART
Metal SKIS

Famed Hart "metals" turn you into a better skier because you turn them effortlessly! They never lose an edge, never lose their shape! We've got a Hart Metal Ski for every skier: STANDARD, PROFESSIONAL, COMPETITION, HART J/R, priced from \$89.50 to \$104.50

**THE BEST IN
 EVERYTHING FOR
 SKIING!**

- Ski Boots • Parkas
- After Ski Boots • Poles
- Pants • Sweaters
- and a complete line of ski equipment.

TAYLOR & VADNEY INC.

303 CENTRAL AVE.

HE 4-9183

ANNOUNCING!

**A NEW
HIGHER
anticipated
DIVIDEND
for the period
beginning
Jan. 1, 1962**

**3 3/4%
A YEAR**

Based on Continued Satisfactory Earnings

**AND...NEW, BROADER SERVICES
AT ALL 3 CITY & COUNTY OFFICES
NOW... INTER-OFFICE CONVENIENCE**

- All transactions . . . deposits, withdrawals, dividend credits, mortgage payments, passbook loans, etc., can now be made at whichever City & County office is most convenient for you at the time.

**Dividends from Date of Deposit
Compounded and Credited Quarterly
PLUS... Bonus Dividend Days Every Month of the Year**

AND . . . varied banking hours to meet the individual needs of each area office. A total of 103 banking hours a week, if you bank in person. 168 hours a week (24 hours a day, 7 days a week) if you bank by mail.

DOWNTOWN OFFICE
9 A.M. to 3 P.M.
Thursdays Until 8 P.M.

UPTOWN OFFICE
10 A.M. to 4 P.M.
Fridays Until 8 P.M.

BETHLEHEM OFFICE
10 A.M. to 4 P.M.
Fridays Until 8 P.M.

**CITY & COUNTY
Savings Bank**



DOWNTOWN OFFICE 100 State St. ALBANY 1, N. Y.

UPTOWN
301 New Scotland Ave.
Corner Ontario Street
ALBANY 8, N. Y.

BETHLEHEM
163 Delaware Ave.
Opposite Delaware Plaza
DELMAR, N. Y.

MEMBER FEDERAL DEPOSIT INSURANCE CORPORATION

ADVENT (Cont'd)

century. And in Scotland, the day, either in its religious or its festive aspect, is confined to a minority of the population even today.

However, almost everyone in the United States today celebrates December 25 as Christmas Day in one form or another. Just in the past ten years, the manger scene in one's home, whether on the mantle or under the tree, has grown in popularity. St. Francis of Assisi conceived the idea of making more popular devotion to the crib and its surroundings by setting a scenic representation of the nativity in 1223. But before 1945, anyone who had a replica of the manger possessed an heirloom or a most expensive set. Today, our Gift Shops and 5 & 10¢ stores are filled with replicas of the wise-men, cattle and the Babe. So only 8 centuries later, St. Francis is seeing fruition of his ideal. Such patience our saints need!

In Norway, Sweden, Denmark and Hungary, there is a regular custom of setting a small sheaf



GREETINGS

DiNapoli

& DiNapoli

ALBANY, N. Y.

of corn on a pole in the gable of the house or barn. This is supposedly for Santa's horse; or should we skip our fantasies and admit it is for the birds?

With less discomfort to ourselves, tufts or sheaves of leaves can be tied to a pole in front of the house and food left there for the small birds.

Today, in the low countries of Belgium, France and Holland, they place a pair of wooden shoes in the doorway filled with a carrot, hay, a potato and an apple so that no one or thing will be hungry on Christmas Eve.

More locally, Mr. Van Olinda refers to the old traditions of Albany: "...marking the fabulous St. Nicholas Ball given every year on December 6 right up until the middle of the 19th century. At this time Harmanus Bleeker and all the other illustrious Dutch citizens distributed toys to the poor during the day and then attended sumptuous banquets at the leading hotels - particularly the American House at 100 State Street, in the evening.

"And so it goes, with every church, every organization and

every community sharing the best of the old traditions and originating wonderful new thoughts to help the less fortunate because the one lesson we all do learn is: It is more blessed to give than to receive."

★ SEASON'S GREETINGS



Don't wait until the last minute to get that haircut for the Holidays. Come ahead of the last minute rush. You'll find that we'll give you that "little extra" service that means so much - plus - first class tonsorial work - always!

GET YOUR XMAS PRESENT!
free pocket comb given away
Thursday thru Saturday

2 shops - 10 excellent barbers to serve you - No waiting!

Plaza Barber Shop

Vincent Spinosa

4 Corners Barber Shop

Tom Spinosa

Holiday Specials!
SPUMONI - TORTONI
Ice Cream Cake and Logs



Individual Santa Claus (By Order Only)

Rappazzo's

1020 Central Avenue, Albany

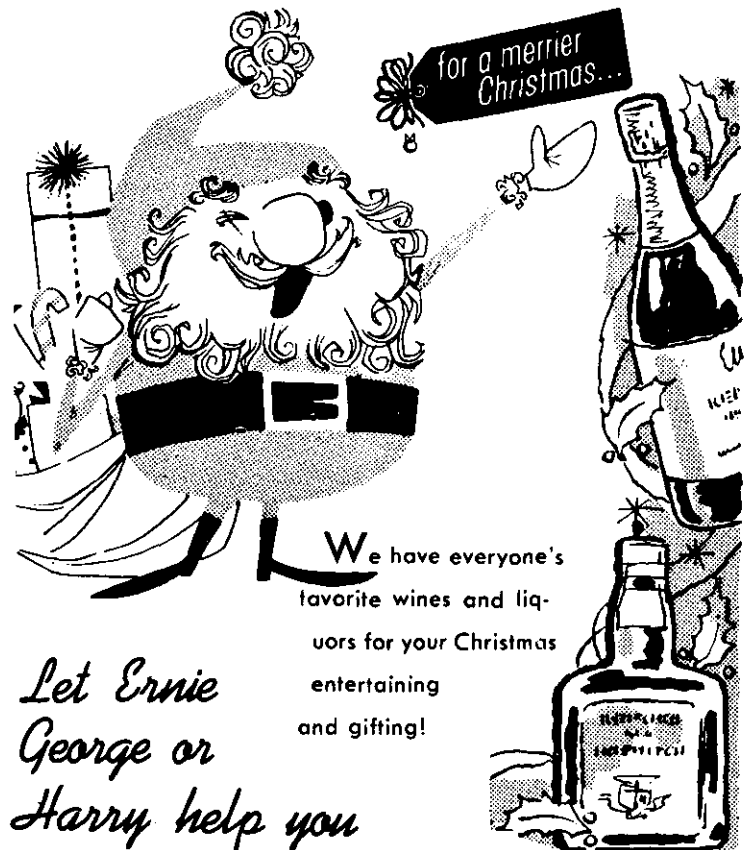
IV 2-7214

*Merry Christmas
and
Happy New Year*

BILL STEWART'S

TRI-VILLAGE ESSO SERVICENTER

309 Delaware Ave., Delmar, N.Y. HE 9-4800



for a merrier Christmas...

We have everyone's favorite wines and liquors for your Christmas entertaining and gifting!

*Let Ernie
George or
Harry help you
with your Holiday Gift Selections*

**We Feature
S.S. PIERCE
Whiskeys & Wines**

complete line of
S.S. PIERCE WINES

Needless to say we carry all popular brands of

**SCOTCHES . BLENDS
BOURBONS . GINS**

Large assortment of
**HOLIDAY DECANTERS
XMAS GIFT BASKETS**

**FOWLER'S
LIQUOR STORE**

Parking right in front of the store
... and don't forget **WE DELIVER**
Elsmere at the light
Corner of Delaware & Elsmere Aves.
Phone HE 9-2613



SPOTLIGHT CLASSIFIEDS - HE 9-4949

Classified Advertising RATES

10¢ per word for each insertion; \$1 minimum.

CALL HE 9-4949

Write, or stop in at our convenient office:
154 Delaware Avenue

ALTERATIONS & SEWING

SEWING and alterations. J. Clark. HE 9-4138. tf
ALTERATIONS and sewing. M. Buess. HE 9-1270. tf

ASH & TRASH REMOVAL

ASH & TRASH weekly pickup. Monthly rates. HE 9-1287. Charles DeGrush. tf
TO COLLECT rubbish at least once a week \$1.50 per month. Also trucking and moving of any kind. UN 1-6639. 4t1228

BUILDING and CONTRACTING

A SPECIALIST in small jobs, windows, floors, walls, ceilings, doors, and cabinets. free estimates. HO 3-6479. tf

CARPENTRY

REMODELING - All types of carpenter work. H. A. Ertel. HE 9-1048. Ed. Hehre, HE 9-1198. tf

REPAIRING, remodeling, new house building. Estimates given. William Van Woert. UN 1-8091. tf

REMODEL your basement or attic. All types of carpentry work. HE 9-5158. tf

DANCE INSTRUCTION

CHILDREN and Adults. All Types of Dance. Classique Dancing School. Mrs. Follett. HE 9-3331. 10t2162

DOLL REPAIRING

DOLLS repaired, restrung. Reina Deitz, 13 Ten Broeck St., Albany. HE 6-1690. tf

SUBSCRIBE TO THE SPOTLIGHT

ELECTRICAL WORK

ALL TYPES electrical work. Call HE 9-4381. tf

FIREPLACE WOOD

FIREPLACE wood. Hard wood-seasoned. 16" face cord \$15. HE 9-1624. tf

FIREPLACE wood, seasoned. Cut any length desired. UN 1-8042. tf

FIREWOOD, dry hardwood boards 1" thick, 2 ft. long. We will load your truck. Delmar Box, Railroad Avenue, Albany. IV 9-5464. tf

FIREWOOD, also kindling. HE 9-2072. tf

FREEZE LOCKERS

BETHLEHEM co-operative freeze lockers. 6 months \$9.00. Call HEMlock 9-3037 to apply. tf

FUNERAL DIRECTORS

In Time of Need, Call M. W. TEBBUTT'S SONS
176 State 12 Colvin
Alb. HO 3-2179 Alb. IV 9-0116

420 Kenwood

Delmar HE 9-2212

11 Elm Street

Nassau 8-1231

Over 110 years of Distinguished Funeral Service

FURNITURE REFINISHING

FURNITURE repairing, refinishing, re-upholstering. French. HE 4-0633. tf

FURNITURE UPHOLSTERER

DROZDOL Upholstering Service. Experts in home furniture upholstery. 16 Judson Street. HO 5-6795. 4t1228

HORSEBACK RIDING

HORSEBACK riding, western, Gentle horses. Trail riding. Triple R Ranch. HE 9-2050. tf

LAWN MOWERS

SHARPENED and repaired. Pickup and delivery. Saws repaired. See our 1960 line of reel and rotary mowers. Trades accepted. Time payments. WACKSMAN, 426 Third St., Albany. HO 5-2756. Open evenings. tf

MASON WORK

BRICK, block, sidewalks, floors and chimneys. Free estimates. McKeon Construction. HE 9-1294. tf

PAINTING - PAPERHANGING

ALL types decorating, painting, floors, ceilings, paper-hanging. HE 9-1436. Goeldner Contracting. tf

INTERIOR and exterior painting. Also carpentry work. Frank Salisbury. Days - HE 9-5527 Nights - HE 9-1355. tf

FREE estimates - interior, exterior painting, paperhanging. Insured. Don Vogel. HE 4-8370. tf

PLUMBING & HEATING

Always get a price from FARRELL BROS., INC.
373 Central Ave., before you install a gas boiler or new heating. No charge for estimates. HO 2-5454. 24 hour service. tf

RADIO & TV REPAIRS

RADIO and TV repairs. All work guaranteed. Pickup and delivery. HE 9-1694. tf

ROOFING

ROOFING - chimneys - gutters - fireplaces, cleaned, repaired. Metal work. Jensen. HO 3-1604. tf

SAW FILING

SAW FILING, shears, tin snips sharpened, circle knives. See Fixer, Mountainview Avenue, off New Scotland. IV 9-1979. tf

SCISSORS SHARPENED

SCISSORS Sharpened. 6 pairs for \$2, also grass shears, knives and what have you. Call for and deliver. HE 9-3893. tf

SEPTIC TANK SERVICE

NORMANSKILL Septic Tank Cleaners. We install dry wells, septic tanks, drain fields. HE 9-2824. tf

SIDING

STATE-WIDE Modernization, Aluminum Siding specialists,

Free estimates. Al Meckler, 1236 Western. IV 9-0991. tf

SKATES SHARPENED

SKATES SHARPENED BY MACHINE
BENNETT GUN WORKS
561 Delaware Ave., Delmar
HE 9-1862

SNOW PLOWING

SNOW plowing by contract or by each individual Snow-fall. PRICE-GREENLEAF Inc. HE 9-9212.

SNOW PLOWING. Arrange now for contract or individual snowfall. Donald Terhune, HE 9-2184. tf

SNOW PLOWING, by contract or individual snowfall. Bernard Pafunda, Voorheesville. RO 5-2784 or RO 5-7386. 4t1228

TRUCKING

MOVING, trucking of all kinds, no job too small. HE 6-0244, HO 2-0080. tf

D. L. MOVERS - WE GIVE PLAID STAMPS WITH ALL JOBS, SMALL OR LARGE, furniture and appliance specialists. Truck for lease. Dick Leonardo. HE 9-5210. tf

LONG FOR LONG DISTANCE. Local and long distance moving. Agents for Atlas Van Lines. Free estimates. D.E. LONG & SONS. HO 3-6626. tf

WESTINGHOUSE MAJOR APPLIANCE SERVICE

SPECIALIZING WESTINGHOUSE MAJOR APPLIANCES

Service & Sales - Washers, dryers, ranges, refrigerators, dishwashers
Free Estimates - Low Rates
AREA APPLIANCE SERVICE
HANZLIK - HE 9-2953

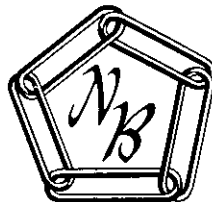
WESTINGHOUSE REPAIR

Washers - Dryers - Ranges
Dishwashers - Refrigerators
"Our Service"
"Recommended-by-reputation"
Dial HO 3-6700
Dorato's Imperial Appliance Service

VACUUM CLEANER SERVICE

ALL MAKES vacuums cleaned, repaired, motors rebuilt. Parts. HE 9-1210. tf

Your
Nutri-Bio
Distributor



DONALD C. BARTLEY

120 Adams St., Delmar

HE 9-3190

AUTHORIZED Hoover dealer, sales and service. All makes. Free pickup. Best vacuum service, 483 Washington Avenue, Albany. HE 6-4147. *tf*

WATCH REPAIRING

EXPERT repairing on all type watches, clocks. Reasonable prices. D. LeWanda Jewelers. Delaware Plaza Shopping Ctr. HE 9-9665. *tf*

MERCHANDISE FOR SALE

ALUMINUM-WINDOWS

Triple-track - \$16 installed, Full 1" combination doors, \$39.50 installed. R. Taylor, RO 5-2856. *tf*

ANTIQUES at the sign of the Coffee Mill, 67 Adams Place, Delmar. HE 9-1021. 4t1214

EASTMAN cheese, sold at Charles Sanders, New Scotland Road and Kenwood Avenue, Slingerlands. *tf*

ANTIQUES make enduring Christmas gifts. Many items reduced - come shop now. Toll Gate Antiques, Slingerlands. HE 9-5514. *tf*

ANTIQUES for Christmas giving: many collectors items. Beautiful art, colored, pattern glass. Coffee tables, Victorian chairs, chests. Tables, hanging lamps. Shop early for the unusual! Betty's Barn Winter Shop, 24 Kenaware Park, Delmar. HE 9-1825 for appointment. 3t1221

TAPE RECORDER, Webcor, hi-fidelity compact deluxe. New. Sacrifice. \$65. HO 5-0334. 2t1221

COLUMBIA 360 Hi-Fi; Kodak 35. Perfect condition. HE 9-2650. 2t1221

KNAPP SHOES and boots. Home or business fittings. Perry. HE 9-1221. 10t215

7" TRUSTWORTHY Radial saw arm and table, model TW 700. HE 9-3380. 2t1221

BABIES' and children's portraits. Your home. Appointment. George Martin. HE 9-5485. *tf*

STEREO combination, Magnavox, two years old. Cost \$795 new. Asking \$375. HO 3-5962.

LIONEL electric train. Good condition. Reasonable. HE 9-4682.

SENDER Guitar Stratocaster with tremado control, 2 leads and case, \$255. 7515065, HE 4-1829.

DUNCAN Phyfe coach; formica drop leaf table. Good condition. HE 4-0030.

TWO evening gowns, size 13, green, blue. Reasonable. HE 9-3161.

2 PIECE sectional sofa with slip covers. Girls 24" bike. Electric roaster, toaster. HE 9-4631.

ANTIQUES, glass, china, modern dining furniture, silver tea and coffee service with tray. HE 9-1056.

PLATE glass mirror, 16" x 50", \$10. 1961 Zenith portable stereo, \$75. HE 9-5313.

HALF price Xmas trims, hammered brass magazine stand, blond wood coffee tables, portable oil stoves, 62-piece Czechoslovakia dishes. IV 9-7833.

TWO SNOW TIRES, 750 x 14, recaps, good, \$12 pair. HE 9-1481.

KITTENS FOR SALE

ADORABLE siamese kittens for Christmas. HE 9-1173.

WANTED TO BUY

METRONOME, good condition. Call HE 9-2547.

AUTOMOTIVE FOR SALE

1957 OLDSMOBILE, mauve and

ivory hard top station wagon, R & H, automatic transmission. IV 2-9146.

PETS FOR SALE

Just in time for Christmas!
Baby HAMSTERS
Soft, lively little fellows - the perfect Gift!
99¢
100's OF OTHER ITEMS ON SALE

FULLER'S PET SHOP

2 Lincoln Avenue HE 9-3309

REAL ESTATE FOR RENT

SLINGERLANDS, 3-4 rooms, range, refrigerator. On bus line. \$75-\$85. HE 9-9824. *tf*

HOUSE, Glenmont, ranch type, unheated 3 bedrooms, built in range \$150. HE 4-7878. 4t1228

SLINGERLANDS \$85. 3 rooms, modern, heat, electric, refrigerator, range, tile shower, HE 9-5612 after 6. 2t1228

THREE room apartment. Heat and hot water. Handy to transportation. Four corners location, \$80. \$85 with garage. Available Jan. 1st. Call evenings after 6 P.M. HE 9-2355.

BUSINESS OPPORTUNITY

OPPORTUNITIES are constantly opening up for good men. If you are interested in becoming a **MOBIL DEALER,** call Earl Chamberlain at Albany HE 4-2111, for interview. *tf*

AVAILABLE immediately - two bay Mobil Service station in Delmar. Now open with good business. Call Earl Chamberlain at HE 4-2111 9 A.M. to 4 P.M. or Joe Tholl HE 8-5680 after 6. *tf*

LEGAL NOTICE

The People of the State of New York, By the Grace of God Free and Independent

To **MRS. MAUDE B. SUMMERS** c/o S/Sgt. John J. Summers AF1236903 18th Tec. Recon. Sqdn. Box 200 A.P.O. 17, New York, New York

CHESTER E. BOOMHOWER RA51302225 130 Med. Hosp. Sta. A.P.O. 403, New York, New York

the heirs at law and next of kin of **CHESTER E. BOOMHOWER** late of the County of Albany, deceased, and the person named as executor, testamentary trustee, guardian, and each person named as executor, testamentary trustee, guardian or beneficiary in any other will of said testator filed in this office, send GREETING:

Whereas, **JOHN E. ROE** of the City of Albany in the County of Albany, N.Y. has made application to our Surrogate's Court of the County of Albany to have certain instrument in writing, bearing date the 29th day of January, 1958 relating to real and personal estate, duly proved as the Last Will and Testament of **CHESTER E. BOOMHOWER** late of City of Albany deceased. THEREFORE, you and each of you, are hereby cited to show cause before our said Surrogate in the County of Albany, at the Surrogate's Court of said County, held in the County Court House in the City of Albany on the 23 day of January 1962, at ten o'clock in the forenoon of that day, why the instrument offered herein should not be admitted to probate as and for the Last Will and Testament of said deceased.


In Testimony Whereof, We have caused the Seal of the Surrogate's Court of the said County of Albany, to be hereunto affixed.

Witness, **HON. HAROLD E. KOREMAN** Surrogate of our said County, at the City of Albany, on the 15 day of December in the year of our Lord, one thousand nine hundred and sixty-one.

Peter F. Cunningham
Clerk of the Surrogate's Court

Subscribe to the Spotlight

We'll make your motor sing



Get Ready for Winter NOW!

- * Engine Tune-up
- * Front End Alignment
- * Automatic Transmission Service
- Modern Equipment
- Skilled Mechanics

BAILEY'S GARAGE

Phone Delmar HE 9-1446
Oakwood Rd., Elsmere



GENERAL REPAIRS

Ceilings Ceiling Tiles
Wallpapering Linoleum Installation
Formica Tops Electrical Work
Ceramic Tile Installations
Plumbing

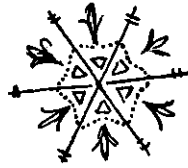
GUARANTEED WORK - REASONABLE PRICES

ALL PAINT 20% to 50% OFF

BARTLEY'S

120 Adams Street, Delmar - HE 9-3190

Open Daily 8 to 5:30 Open Sat. 8 to Noon



Downtown, Albany
Delaware Plaza, Delmar

When in Doubt!



Give A

STEEFEL Gift Certificate

ALWAYS A WELCOME GIFT



SEASON'S GREETINGS

Gladness in your heart and a smile on your face, warm friends around you, gifts and good things to enjoy . . . that's our Christmas wish for you.

WILLIAMS BROS. BUILDERS
FRANK & GUS WILLIAMS
DELMAR, N.Y.

DELAWARE Plaza

in Delmar
MODERN ONE-STOP SHOPPING

Christmas . . .

SHOPPING at the Delaware Plaza is fun because of the one-stop feature - economical because Plaza merchants' prices are reasonable - satisfying because of the complete stocks to select from. **TRY IT THIS YEAR!**

There's always plenty of **FREE** parking at the **FRIENDLY** Delaware Plaza

Again . . . A Murray-Simon, Inc. Project

Permit No. 10
PAID
U. S. POSTAGE
Bulk Rate

