

LETTERS

Dear Editor:

We understand at our home that Hallowe'en is a night for youngsters to enjoy. But enjoyment should not include the destruction of property.

I have been ill for the past several years. Therefore, the upkeep of the house, including cleaning the windows has been my husband's responsibility. Everyone in our neighborhood knows this. This Hallowe'en these facts made no difference; our windows and doors were painted with some kind of substance similar to aluminum paint; obscene words were included. The small fry cannot be blamed because much of the mischief was 6-7 feet above the ground.

My husband and I have always tried to mind our own business. We believe that others should follow suit. This Hallowe'en was just too much; we are putting our house up for sale and we will leave Delmar as soon as it is sold. Some place we will find peace and contentment.

G.D.M.
(Name submitted)

Dear Editor:

Who is the Bethlehem Officer who considers it so important to flaunt his uniform and office that he finds it necessary to park a Bethlehem Police Patrol Car in the area directly in front of the Church of his choice between two signs which read "NO PARKING BETWEEN SIGNS?" And on the wrong side of the street!

It is true that very few of the worshippers see the car because he arrives late and leaves before the end of service.

N.B.
(Name Submitted)

Mrs. Hosey Will Be Panelist

Mrs. Gladys Hosey, Chairman of the Business Education Department at BC Senior High School will take part in the Eastern Business Education Association meeting on November 27.

Mrs. Hosey will be a member of a panel on National Business Education Clubs. The BCHS club called FBIA was one of the first clubs organized in N.Y. State in 1960.

Ambassador Project Meeting Set for Tonight, Nov. 19

On November 19, at 8 p.m., the Bethlehem Community Ambassador Project will hold its second meeting of the current season in the library of the Senior High School. At this meeting countries will be chosen for the various phases of the program; incoming and outgoing Community Ambassador, and incoming groups.

A film, "The Experiment," will be shown. This picture, recently released, is an entertaining presentation of some of the many facets of the Experiment in International Living. The picture features actual Experimenters, at home and abroad, host families in their homes and officers of the Experiment. It is designed to acquaint the public with the history and present day scope of the larger program of which the Bethlehem Community Ambassador Project is a part.

Mr. and Mrs. Sam Hazelton, who attended the General International Meeting of the Experiment in September, will present an illustrated report of the meeting. This meeting is held annually and is attended by several hundred Experiment-connected people from all over the world. This year, Greece was host to the meeting. Since Bethlehem homes were opened to a group of young ladies from Greece this summer, reports of the Greek meeting will have special significance.

Camera Club Meeting

The Delmar Camera Club announces a special guest for the meeting on Tuesday, November 24. The meeting will be held at 8:00 p.m. in St. Stephen's Episcopal Church, Elmsmere. The guest of the evening is John Egbert, a former president of the Albany Camera Club, and more recently a member of the Kingston & Monticello Camera Club.

After showing color slides of a fall trip made along the New England coast to Bar Harbor, Maine, Mr. Egbert will discuss the lenses used in taking the slides, and how they are best adapted to each particular situation a roving photographer may meet up with.

The Spotlight

VOL. IX, NO. 47

NOVEMBER 19, 1964

\$1.00 PER YEAR

10¢ A COPY

JAMES MICHAELS TO CONVERT VAN ALLEN FARM

In the light of the evermore present and future needs for well designed public golf courses throughout the country, as well as in the Capitol District Area, Deerfield Land Corp. was formed - its purpose being to build and construct the Deerfield Golf Course.

The officers of the new corporation comprise of James W. Michaels, well-known area Landscape Contractor for the past sixteen years; Jerry and Joseph Rosen, Residential Building Contractors in the Albany Area for the past ten years; Darryl Bradt, Landscape and grading specialist for the past 12 years. All of these men are associated with the building and community planning of the residential subdivision, "Colonial Acres" located in Glenmont, New York. The Rosen Bros. are also presently developing and building "Woodmere Park" located in Colonie, New York.

The owners of the corporation set out to find a suitable site for a fine golf course layout. Feeling the great importance and growth potential of the Southern Frontier of Albany, the Town of Bethlehem became the focal point. The planned network of arterials and major highway intersections has placed the town in an ideal location midway to and from areas North, South, East, and West. Also, the rich natural resources of the land lends itself so well to "growth."

The John C. Van Allen farm, situated on Route 9W about 1 1/2 miles south of Bethlehem Center became the Corporation's start in obtaining the necessary amount of land needed for the 27-hole layout. The Van Allen property is undoubtedly one of the most productive, well-kept farms in the area. The hard work and personal pride of the Van Allen family dates back to the early 1800's. Kenneth C.

Van Allen, son of the late John C. Van Allen and owner of the 100-acre property, was personally appreciative that the beauty of the land would be retained and preserved with the construction of this golf course.

Since then, the Corporation has acquired an additional 120 acres, forming a 220-acre rectangular plot running from Route 9W to East Elm Avenue.

Preliminary plans already established include construction of a series of one-acre ponds acting as reservoirs for the underground watering of fairways, greens, and trees. These ponds will also serve as water hazards within the golf course design. The planned watering system will be of the newest automatic type available. The exceptionally large 4500-9000 square feet greens will be elevated, gently sloped and interestingly contoured to add a bit of challenge to the game, especially to the golfers of advanced ability. The tees will be designed with red, white and blue markers. The blue markers representing the professional tees. Playing the course from the different markers, - it will range from 6400 yards to approximately 7200 yards.

The design, layout, and much of the site supervision of the new Deerfield Course will be furnished by two outstanding local area professionals, Robert L. Mitchell, Golf Course Architect, Rexford, New York, and James K. Thomson, Consultant, Schenectady, New York.

Mr. Thomson, born in Scotland and serving his apprenticeship there, has been at the Mohawk Golf Course for the past 46 years. His most recent design was of the popular nine-hole "Wee Course" at Mohawk. Mitchell and Thomson state that after inspecting the Deerfield site they find it most suitable for a golf course - rolling enough

(Continued on Page 2)

VAN ALLEN FARMSON 9-W - FIRST FARM NORTH OF JERICO DRIVE-IN
OPEN 9 A.M. to 8 P.M. ROger 7-9101OPEN
YEAR
ROUNDOrder Your
Freshly Dressed**TURKEYS**

NOW FOR THE HOLIDAYS

CIDER • MEATS • VEGETABLES



If I were renting a

BANQUET TABLES
AND CHAIRSI'd call
HILCHIE'S
439-9943

VAN ALLEN (Cont'd. from Page 1)
to be interesting but not steep to be tiring. The soil is ideally suited for the growing of fine turf, so necessary for a first-class course. Both Mitchell and Thomson felt it will be challenging to experts and still enjoyable to the high handi-cappers and even duffers. Their prediction is that Deerfield will be one of the outstanding Golf Courses in the area.

Presently, construction of the watering ponds and reservoirs is underway. The anticipated completion of the Deerfield Golf Course will be in the fall of 1965.

Miss Ann Feitchner will present her slide illustrated talk at the regular weekly meeting of the Senior Citizens at the Junior High School in Delmar at 7:30 p.m. on Thursday, November 26.

HANDY-DANDY
HEmlock
9-4444

BROWN'S
PIANO & ORGAN MART
Tri-City's Largest Selection
1047 Central Ave., Albany
459-5230

When it comes to
**Specials in
Carpeting...**

... WE ARE ALWAYS
AHEAD. OUR LARGE DIS-
PLAY AND STOCK IS
ALWAYS READY FOR
IMMEDIATE DELIVERY!

**CARPET
CENTER**

Down the Underpass
North of the
LATHAM CIRCLE
(On Route 9)
Open Evenings 'til 9
(Sat. 'til 6 P.M.)

NEW!

Christmas Club

★ Holiday Magic... ★

★ A PAIR OF
PINE-SCENTED
PIROUETTE
CANDLES

These are beautiful Christmas-red candles to add that extra, just right touch to your holiday decorating. Pine-scented, graceful spirals with self-locking bases. You'll want an extra pair, so get some other member of your family to join, too.

FREE! WHEN YOU OPEN
YOUR NEW CHRISTMAS
CLUB AT

CITY & COUNTY SAVINGS BANK

\$1.00, \$2.00, \$3.00, \$5.00 and \$10.00 CLUBS

JOIN TODAY! NO OPENING CHARGES

**CITY & COUNTY
Savings Bank**

*Your
Community Bank*

BETHLEHEM OFFICE

163 Delaware Ave., Opposite Delaware Plaza, Elsmere
P.O. Address: Delmar, N. Y.

Member Federal Deposit
Insurance Corporation

THE SPOTLIGHT

DICK DALTON WILL BE HONORED AT LEGION DINNER

Guest speaker for the tribute to Dick Dalton for bringing American Legion baseball glory to his Post and Albany County will be Hal Goodnough, renowned as "Baseball Drumbeater" of the New York Mets.

Nathaniel Adams Blanchard Post #1040 in Elsmere has set Saturday, November 21, as "Dick Dalton Day." For the occasion a dinner in Dick's honor will be at the Post at 7 p.m. Tickets are available from the dinner committee headed by George Butman.

Blanchard's team won through county, district and the north-east region of New York State.

In the State semi-final at Poughkeepsie it lost to a Post from Staten Island which went on to the national finals.

Dick Dalton has for six years managed the Blanchard teams and has served as secretary for the County American Legion Baseball program. In private life he is with the New York State Banking Department.

Mrs. Dalton will be at the dinner as will many of the wives of Dick's friends and admirers who are honoring him. As is the custom, a dinner and tribute to the Post's team members, all of school age, will be held for them.

Going to dress up for the Holidays?

Every day we receive shipments of all sorts of exciting and glamorous items:

DRESSES - White and pastel wools; some very dressy, some very basic - crepes; black and colors - knits; yummy in white, pale creamy beige, Bahama blue, coral - Also some new Dacron Knits that look just like silk - Brocades, laces, sequins...

SPORTSWEAR - New light colors in dyed to match outfits - Beaded trimmed cardigans and pull-overs for evening wear - Long skirts in tweeds, velveteen, and crepe - Frilly feminine blouses - Knit & flannel slacks for at home entertaining with embroidered or printed sweaters to coordinate...

JEWELRY AND ACCESSORIES - Lots of new sparkly, striking jewelry - Clutch bags in silk, or velvet - or simulated reptile.

There's lots more.
Won't you come in?



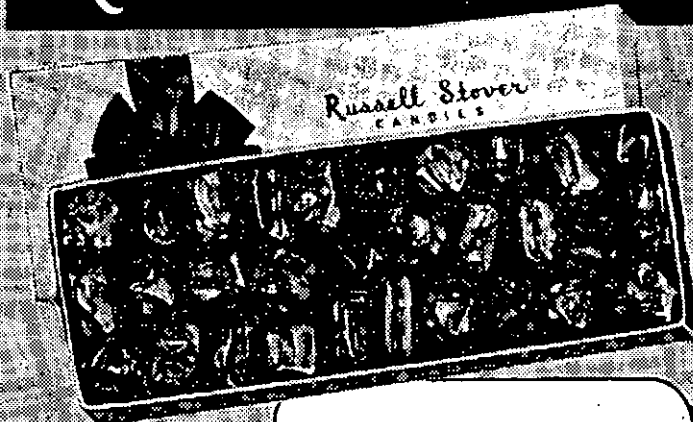
Daily
at
10
A.M.
EVE.
Wed.,
Thurs.,
Fri.

We Want Your
BUSINESS!

ALBANY DODGE
949 CENTRAL AVE.

FOR THANKSGIVING

Russell Stover CANDIES



Assorted
Chocolates

\$1.60

1 Lb. Box

\$3.15

2 Lb. Box

3 Lb. - \$4.50

4 Lb. ONLY \$7.50

The finest,
freshest candies
you can buy...
Exclusively Ours!

Delicious Russell Stover Candies are famous everywhere for their superb quality and freshness... they're delivered to us fresh weekly.

L.J. MULLEN PHARMACY

256 Delaware Avenue

Elsmere, New York

HE 9-2413 - PHONES - HE 9-5411

SPOTLIGHT CLASSIFIEDS TELL THE WORLD!

HE 9-4949

HE 9-4949

HE 9-4949

**Pendleton®
for CARDIGANS**

Casual comfort and smart styling have been knit into these cardigans. Our selection is new and complete.

Also Women



Bennett's
SPORTING GOODS
561 Delaware Ave
439-1862

For Dessert or as an Hors D'oeuvre . . .

Figs, dates, apricots, prunes stuffed with nuts and marinated in wine. (Use Sherry, Muscatel or a Sauterne.)

FOR OTHER TIPS ON HOW TO USE WINES . . .
Rules for the Conventional . . . Rules to break for the daring

SEE . . .

ELSMERE WINE & LIQUORS

222 DELAWARE AVE., DELMAR
Phone 439-9229 FREE DELIVERY

Open Daily 9 a.m. to 9:30 p.m.

"As near as your phone"

Free Gift Wrapping

Supervisor Accepts Sun Dial



In a Veterans' Day ceremony at Bethlehem Memorial Park in Delmar, Town Supervisor Bertram E. Kohinke accepts for the Town a sun dial from the Women's Republican Club of Bethlehem with Mrs. Merwyn K. Atwood, Secretary for the women's group, making the presentation. Inscribed on the stone on which the sun dial rests are the names of Otto D. deHeus, John M. Oliver, Dr. Thomas M. Holmes and Arthur A. Main who founded the park in 1942.

Cub Pack 88 Needs Help

Cub Scout Pack 88, Glenmont, will have its monthly pack meeting, 7:00 p.m., Monday, November 23, at the Glenmont Elementary School. Parents of Cubs in the Pack are requested to attend and an invitation is extended to all interested parents to attend with their sons. There is a need for Den Mothers and Committee workers. Contact Committee Chairman William Little at 439-5710 or Cubmaster George Bloodgood, Jr. at 439-3383.



HEmlock
9-4444

CAR WASH

Held at the
Bethlehem Lutheran
Church
Corner of Elm & Murray
Avenues

by the Youth Group
Saturday, November 21,
from 11 A.M. to 4 P.M.
Price - \$1.50 per car

IF I WERE INSTALLING A

NEW KITCHEN

I would get a **FREE**
estimate from

ALBANY BUILDING CENTER

352-354 Central Avenue
Albany HO 3-3211

4 speeds forward,
power reverse!



2-STAGE, SELF-PROPELLED

Ariens
SNO-THRO

Makes short work of
clearing any kind of
snow! Clears 24" path
... throws snow from 3'
up to 25' away in any
direction. Dependable 4
h.p. engine. Easy to oper-
ate with four speeds for-
ward plus power reverse.

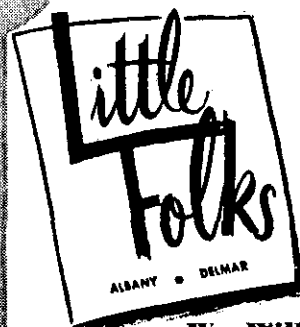
\$249.95



Sales and Service

**HILCHIE'S
HARDWARE,
Inc.**

Elsmere at the Light
HE 9-9943



THEY ALL LOVE
"PERSONALIZED" GIFTS

infants' - toddlers' - boys' -
girls' - teens' - juniors'

We Will MONOGRAM

Any item of your selection
for only **1.00**

Blouses, overalls, sweaters, polos, etc.

Make perfect personalized gifts.



Of course, use your First Trust Charge
Account or Our Convenient Layaway
Plan.

DELAWARE PLAZA



SAVE UP TO 40¢ a lb.!



BEEF SALE

- Sirloin Steak **79¢** lb.
- Rib Steak WELL TRIMMED 7" CUT **79¢** lb.
- California Chuck STEAKS **65¢** lb.
- Club Steak BONE IN **99¢** lb.
- Porterhouse STEAK **89¢** lb.
- Chuck Steak BLADE CUT **49¢** lb.
- Chuck Steak BONELESS **79¢** lb.
- Club Steak BONELESS **149¢** lb.

CLIP THESE COUPONS

FREE 300 extra bonus **STAMPS**

With this coupon and the purchase of One 5 lb. unit

GROUND CHUCK

Redeemable at your friendly ...

Grand Union or

Grand-Way CODE M

Coupon Good Thru Sat., Nov. 21st

LIMIT ONE COUPON PER CUSTOMER

FREE 100 extra bonus **STAMPS**

With this coupon and the purchase of One 5 lb.

HAFNIA CANNED HAM

Redeemable at your friendly ...

Grand Union or

Grand-Way CODE M

Coupon Good Thru Sat., Nov. 21st

LIMIT ONE COUPON PER CUSTOMER

GRAND UNION WISHES YOU THE BEST OF EVERYTHING FOR

Thanksgiving

BUTTERBALL TURKEYS

20 to 24 lbs. **39¢** lb.

16 to 20 lbs. **43¢** lb.

10 to 16 lbs. **47¢** lb.

Thousands have discovered there is a difference in turkeys ... have you? "Butterball" turkeys have more white meat, deeper breasts, more dark meat and most leg tendons are removed for easier carving. This Thanksgiving serve your family the finest ...

Christmas is merrier for savers



IT'S TIME TO Join OUR NEW Christmas Club

Want to have plenty of money to buy armfuls of presents next November? Join the thrifty thousands who save ahead the gay Christmas Club way. Choose the plan that's easiest for you . . . and join now.

CHRISTMAS CLUB PLANS

50 weekly deposits of: bring next November

| | | |
|------|-------|-------|
| \$ 1 | _____ | \$ 50 |
| 2 | _____ | 100 |
| 3 | _____ | 150 |
| 5 | _____ | 250 |
| 10 | _____ | 500 |

Arrange for your LOAN BY PHONE . . . CALL 474-8035
Daily, 9 a.m. to 5 p.m. - Saturdays, 9 a.m. to 1 p.m.

Extra Banking Hours . . .

DELMAR OFFICE, 343 Delaware Ave.
Fridays, 4 to 7:30 P.M.
Drive-in Teller Window open from 8:15 a.m. daily

ELSMERE OFFICE, Delaware Plaza
Wednesdays, 4 to 7:30 P.M.
Walk-up Teller Window open at 8:15 a.m. daily



NATIONAL COMMERCIAL BANK AND TRUST COMPANY

MEMBER FEDERAL DEPOSIT INSURANCE CORPORATION

FULL SERVICE BANKING through 40 offices in Northeastern New York State

Young Pianists in Recital

Miss Adelaide Belser, Pianist and teacher will present her pupils in a piano recital on Saturday, November 21, at three o'clock, at her home in Delmar.

The following young pianists will be heard: Peter Harvey, Laura Lee Hurwitz, Barbara Forrest, Charlotte Saper, Irene Faust, Keith Carr, Thomas Scurrah, Bonnie Salvesen, Deborah Merigan, Barbara Greene, Denise Cornwell, Sally Strobel, Marcy Hendrick, Janice Lang, Karen Langhauser, Barbara Dahl, Donna Quintana, Carolyn Kass, Christine Rosato, Robin Forrest, Daryl Hyde, Martha Boyce, Joanne Cassidy, Kathleen Silver, Rosemary Catalano, Virginia Carr, Carolyn Rogers, and Judy Slingerland.

St. Thomas' News

Refreshments will be served at the Movie Meeting scheduled for November 22 by St. Thomas' Senior Youth Group. Joseph Steffens will handle arrangements.

High School Students in St. Thomas' parish are welcome to

APPLIANCE AND TV SERVICE PAUL HOPKINS

HE 9-3820

HE 9-4558

CHIROPRACTIC

Dr. William F. Wolfe, located in the Colonial House Professional Building, 230 Dela. Ave., Elsmere.

Hrs.: Tuesday, Thursday, Saturday by Appointment. 439-3921

IF I WERE BUILDING A

PORCH ENCLOSURE

I would get a FREE
estimate from

ALBANY BUILDING CENTER

352-354 Central Avenue
Albany HO 3-3211



Don't Pay Higher Prices
For Next Week's Feast!
Shop A&P Where...

LOW PRICES NEVER *take a* HOLIDAY!

(GET SAVINGS - AS USUAL - FOR THANKSGIVING, TOO!)

US Govt. Inspected

Super-Right Quality, U.S. Gov't. Inspected, Plump, Meaty

GRADE A TURKEYS

ORDER YOURS TODAY

AT A&P'S LOW LOW PRICE
BE SURE OF THE EXACT SIZE
TO FIT YOUR NEEDS

A&P - OUR FINEST QUALITY

CRANBERRY SAUCE

2 1 LB CANS 39^C

SMOKED PICNICS

SUPER-RIGHT, 6 to 8 LBS
SHORT SHANK SHOULDERS LB 29^C

PORK LOINS

Super-Right Quality 5-Rib
Fresh, Tender Porkers Portion LB 29^C

| | | | | | | | |
|---------|-----------|----|-----------------|----------------|------------|----|-----------------|
| Portion | PORK LOIN | LB | 33 ^C | Loin Portion | Pork Roast | LB | 43 ^C |
| Half | Pork Loin | LB | 43 ^C | Full Loin Half | Pork Roast | LB | 53 ^C |

| | | | | | |
|----------------------------------|------------------|---------------------|-------------|------|-----------------|
| Roast—Boneless | 99 ^C | Fancy Smelts | NO. 1 | LB | 29 ^C |
| Riverside 2 1/2-3 1/2 lb avg. lb | | Sliced Bologna | Super-Right | 1 lb | 59 ^C |
| Porters | Super-Right 2 LB | | Right | pkg | |
| Porters | Skinless PKG | Shrimp | COCKTAIL | 4 OZ | 89 ^C |
| | Skinless 1 LB | | SAU SEA | JARS | |
| Bacon Ends | Swift's PKG | Fresh Steak Cod | | LB | 39 ^C |
| | LB | | | | |
| Sage Meat | | SUPER-RIGHT | | LB | 35 ^C |
| | | PURE PORK | | | |
| anned Ham | | WHOLE—10 LB AVERAGE | | LB | 69 ^C |
| Shrimp | LB | | | | |
| | 79 ^C | Haddock | FILLETS | LB | 65 ^C |
| | | | FRESH | | |

| | |
|--|--|
| er Large 8 Inch, 1 lb 8 oz | Jane Parker Large 1 lb 1 oz |
| erry Pie | Angel Food |
| Save 10c | Save 20c |
| YOUR CHOICE | 39^C EACH |
| head Whole or Cracked Jane Parker 2 1 lb lbs 49 ^C | Peach Pie JANE PARKER 1 LB 8 OZ EACH 59 ^C |

WINTER is on the way



**BOOTS
ESKILOOS
STADIUM BOOTS
RUBBERS**

FROM \$3.95 UP

DELMAR BOOTERY

Four Corners

Jack Leonardo, Prop
Shoe Rebuilding by Factory Method

HE 9-1717

join the crowd heading for Beck's Roller Rink in Ravenna on November 27. Sponsored by St. Thomas' XPM Sodality, the bus trip was arranged by Linda Caminiti and the following publicity committee, Susan Mulkeme,

Kathy Holm, Anne Courcelle, and Sharon White.

XPM Sodality will have a volunteer committee on hand to provide services for St. Thomas' Fall Festival, an "evening out" for adults.

**YOU'RE INVITED!
FREE ORGAN CONCERT**

Fun: Refreshments

Sunday 3 P.M.



ROUTE 9, LATHAM—1/2 MILE NORTH of CIRCLE

ST 5-0941

Katz

**LIKES
WHIPPED
CREAM®**

Relax with the most care-free fabric of all . . . Klopman's WHIPPED CREAM® of 100% Dacron polyester. No worries, no work . . . just lean back and relax with *Katz*

Shift Gown
Illustrated, No. 7198

Sizes 32 to 40 **\$3.98**

Available in
Pink, Blue, Maize
and Mint

DELMAR DEPARTMENT STORE

Four Corners, Delmar


1
GOLD MEDALLION
APARTMENTS

CENTRE CREST APARTMENTS



OPEN FOR INSPECTION

Monday through Friday,
5:00 to 8:30 PM.



Weekends,
2:00 to 8:30 PM.

BUILT BY EXPANCO INC.
BROADWAY AND 19TH STREET
WATERVLIET, N.Y.

1

There's a great new opening in Elsmere

The star attraction, a Gold Medallion winner, is the Centre Crest Apartments. And Elsmere's "hit of the season" is going to make 8 families very happy. All eight apartments in this beautiful, all-brick house have the modern comfort and convenience of total electric. Each has two bedrooms, living room, dining area, snack bar, bath and total electric

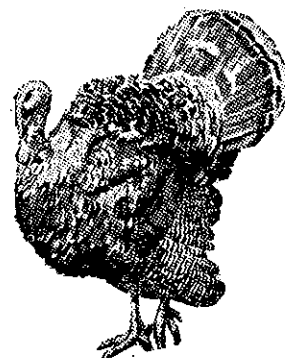
kitchen. OTHER FEATURES: Electric baseboard heating by General Electric with individual temperature control in each room. G-E quick recovery electric water heater. Total electric kitchen includes range, refrigerator and dishwasher, all by G.E. Washers and dryers are available, and air conditioning is optional. Recessed incandescents and valance

lighting throughout. Thermopane windows. Wall-to-wall carpeting. All units are unfurnished. Rent for each 2-bedroom apartment is \$140, plus utilities. OPEN FOR INSPECTION: Monday through Friday, 5:00 to 8:30 PM. Weekends, 2:00 to 8:30 PM. LOCATION OF CENTRE CREST APARTMENTS: 274 Delaware Avenue, Elsmere.

BUILT BY EXPANCO INC.
BROADWAY AND 19th STREET, WATERVLIET, N.Y.
Telephone: 273-1864, 273-1151, 439-3904



Freikofer's

DELICIOUS BREAD, ROLLS & CAKE
COMPARE . . . and see the difference!
**Batter Whipped! No Holes! No Streaks!
Delicious Bread, Rolls & Cake!**
DAILY & HOME DELIVERY
Phone HO 3-2221

Specially Decorated

THANKSGIVING CAKE 1.59

Two layer chocolate cake, white iced, with orange and chocolate trim on sides - Topped by pumpkins and turkey in the center.

THURSDAY

Nov. 19th

- ☐ VALENCIA RING 65c
- ☐ DUTCH APPLE PIE 69c
- ☐ Bobka 59c
- ☐ ● Butter Parkerhouse Rolls 39c
- ☐ ● King Size Bread 31c

FRIDAY

Nov. 20th

- ☐ BLUEBERRY PIE 69c
- ☐ PECAN COFFEE RING 49c
- ☐ Boston Brown Bread 29c
- ☐ ● Pan Rolls 33c
- ☐ ● Sunbeam Bread 26c

SATURDAY

Nov. 21st

- ☐ STEAWBERRY CREAM LAYER 79c
- ☐ LEMON MERINGUE 69c
- ☐ Honey Pecan Ring 59c
- ☐ ● Hard Seed Rolls 29c
- ☐ ● Old Fashioned Bread 29c

MONDAY

Nov. 23rd

- ☐ RASPBERRY PIE 69c
- ☐ Lemon Buns 36c
- ☐ California Cheese Cake 69c
- ☐ ● Butter Rolls 29c
- ☐ ● Thin Sandwich Loaf 26c

TUESDAY

Nov. 24th

- ☐ THANKSGIVING CAKE 1.59
- ☐ Streussel Buns 39c
- ☐ Golden Fluff 54c
- ☐ ● Cloverleaf Rolls 35c
- ☐ ● Pane Italian Bread 25c

THANKSGIVING SPECIALS

Tuesday and Wednesday, Nov. 24-25

- Pumpkin Pie 69c
- Mince Pie 69c
- Apple Pie 69c

Tuesday and Wednesday, Nov. 24-25

- Holiday Coffee Cake 69c

-
- Cube-its Stuffing 29c

Your bird will top the "best dressed" list

-
- Party Cookies 89c

4 dozen gaily decorated fancy cookies

-
- Chocolate or Raspberry
Cake of the Month 2.69

4-layer oblong ice box cake—24 generous servings

-
- 2-Lb. Genuine Fruit Bar \$2.39

- 4-Lb. Genuine Fruit Ring \$4.75

- Twin-Pak 2-Lb. Fruit Bars \$4.75

PLEASE NOTE! Place your order with your routeman or call the Bakery by Nov. 23 for all special orders to be delivered on Tuesday or Wednesday, Nov. 24 or 25. HO 3-2221.


Freikofer's


● Indicates items available every day. The above is not a complete list of available items. For further information ask your routeman or call the bakery.

Watch 'FREDDIE FRIEHOFFER' WRGB Weekday's 4:45-5:00



A. ANDREW GIGLIOTTI
PIANO DEALERS and CONSULTANTS
EXCLUSIVE AGENTS FOR
KNABE, FISCHER & STARCK PIANOS
Fine Selection of Used Pianos
- BY APPOINTMENT ONLY -
4 Dudley Heights, Albany, N.Y.
HO 3-5223





NATIONALLY ADVERTISED
WINDBREAKER
MADE IN U.S. PAT. OFF. SINCE 1911
WINDBREAKER - Danville Co.
DANVILLE, ILLINOIS

FOR YOUR LEISURE LUXURY
Just slip into this handsome wool melton suburban coat and you'll immediately SEE and FEEL the difference. Beautifully styled with a deep frost pile shawl collar and lining. Meticulously tailored with set-in coat sleeves, and double-stitch detailing.

\$39⁹⁵

The Squire

Cadd
four corner shop
men boys

FOUR CORNERS
DELMAR
Parking at Rear of Store

CUT FLOWERS
(Chrysanthemums)
Cut freshly from our greenhouses
\$1.25 bunch
Now until Thanksgiving





14 Booth Rd., Delmar (Off Delaware) Opposite A&P
FREE DELIVERY HOURS: Monday Thru Sat. 8:30 A.M. to 6 P.M. Sunday 10 A.M. to 4 P.M. Telephone HE 9-9212.

55¢ lb.
TOMS
Dr. Lovelace's
Fresh Dressed,
Local, Bronze,
Broad-breasted

65¢ lb.
HENS
Broad-breasted

TURKEYS

Honeysuckle's
FROZEN
White, Broad-
breasted, 10-30
lb. Average

49^c lb.

Genuine Spring
LAMB
Rath's CANNED
State of Maine
HAMS
Smith's of West Winfield Famous
CAPONS
SAUSAGE

5-7 lb.
Average

69^c lb.

5-7 lb.
can

4²⁹ lb.

5-7 lb.
Ave.

39^c lb.

lb.
bag

69^c lb.

FRESH PRODUCE
WALNUTS
1964 New Crop,
Large Diamond
SAVE 10¢
lb. bag

Prune Juice
LINCOLN

3⁹⁵ Qt. Bot.

Toilet Tissue
Swanee

4³⁹ rolls

FROZEN FOODS
Strawberries
RIVER VALLEY
SLICED

3⁹⁵ pkg.

Squash
RIVER VALLEY

3⁵⁹ pkg.

Reserve right to limit quantities - Prices effective Thurs., Fri., Sat. 11/19, 11/20, 11/21

DAVIS'

Stonewell Shopping Center

JUNCTION HIGHWAYS 85 AND 85A

HE 9-5398

NEW SCOTLAND, NEW YORK

Open Daily and Sundays 10 A.M. to 10 P.M.

NEXT WEDNESDAY, NOVEMBER 25 is TITHING DAY at MYERS

Myers takes great pride in contributing to the Church or Temple of your choice . . . **ONE DAY ONLY!**

ON THIS DAY ANY CUSTOMER MAY ASK THAT 10% OF HER TOTAL PURCHASES BE CREDITED TO THE SPECIFIC CHURCH OR TEMPLE OF HER CHOICE.

"Tithing Day" has been enthusiastically endorsed by the various denominational groups in this area.

Myers
albany

Jean Edwards'
"SUBURBAN GAL"

99 DELAWARE AVE., ELSMERE

MON., TUES.
SAT.
9:30-6:00

WED., THURS.
FRI.
9:30-9:00

Stock up now for
Christmas Giving

MATCHED QUARTET

PANTIES &
PETTI PANTS 99¢
Reg. 1.50

PETTI SLIP \$1.99
Reg. 3.00

FULL SLIP \$2.99
Reg. 4.00

Marvelous Lingerie of
luxurious, easy care
miracle Antron® Nylon
Tricot, lavished with
Trousseau Lace.
STOCK UP NOW!

Panties and Petti
Pants (not sketched)

Sizes 5 to 8
Petti Slip - S-M-L
Full Slip - 32 to 40
Petite and Average



Mrs. Van Nuis is Chairman

Mrs. William Van Nuis, 29 Mountain Road, Ravena, has been appointed Chairman of the Bethlehem-Coeymans District of the Branches Division of the Albany Area Chapter, American Red Cross, it was announced today by Mrs. C.E. Raymond Haight, Chairman of County Branches.

Mrs. Van Nuis served as Chairman of the Ravena-Coeymans for four years. She succeeds

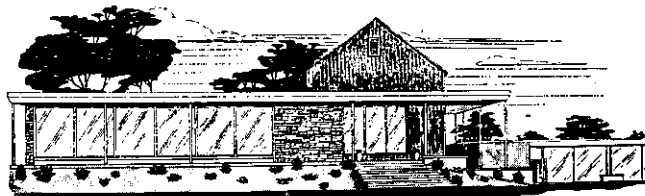
Mrs. J. Tyler Headley of Ravena, who held this post for almost two years.

According to Mrs. Haight, Mrs. Van Nuis will be responsible for coordinating the activities of seven Red Cross Branches within her District which are: Elsmere, Glenmont-Van Weis Point, Ravena-Coeymans, Slingerlands, and South Bethlehem.

Mrs. Haight also stated that the role of the Branches' work in the Red Cross program has



For Lovely Festive Decorated Tables for Thanksgiving it's



Verstandig's
FLORIST

Est. 1932

454 Delaware Avenue

Delmar, New York

Phone HE 9-4946

RUGS SHAMPOOED CALLED FOR & DELIVERED



Karpet-Kare

The Famous Cleaning Method

- Takes only one day
- Right in your own home

Now done by the only automatic rug cleaning machine in Albany

LEKTRO-KLEEN

27 SHERMAN ST.

Our 27th Year

Meyer Cohen, Prop. Tel. HO 5-7870



become more and more important as the population of the outlying communities around the City of Albany has increased. She pointed to the Ravena-Coeymans Swimming Instruction Program as an example. This program has grown from 200 to nearly 1,000 children in a ten year period.

Dividend Declared

In view of satisfactory current earnings, the Board of Directors of National Commercial Bank and Trust Company, Albany, New York, at a regular meeting today declared at 3% stock dividend subject to the usual approval by the Comptroller of the shareholders of the bank.

Yours for the asking . . .

A Booklet for Prudent Investors

Prudent investment usually requires diversification of industries, companies and management. Full time professional supervision, PLUS a well balanced plan, have always been important in maintaining a sound investment program.

These are a few of the many advantages of well managed Mutual Funds as detailed in our booklet "Understanding the Mutual Funds." We have a copy for you. Stop in or use coupon below.



HAYDEN, STONE

INCORPORATED - ESTABLISHED 1892

MEMBERS NEW YORK STOCK EXCHANGE

83 State Street

Albany, N. Y. 12207

Phone 465-8833

Please send booklet "Understanding the Mutual Funds"

NAME _____

ADDRESS _____

CITY _____ STATE _____ ZIP _____

**We'll make your
motor
sing**



- * Engine Tune-up
- * Front End Alignment
- * Automatic Transmission Service
- * Modern Equipment
- * Skilled Mechanics

BAILEY'S GARAGE

Phone Delmar HE 9-1446
Oakwood Rd., Elmsere

NEED CARPET?

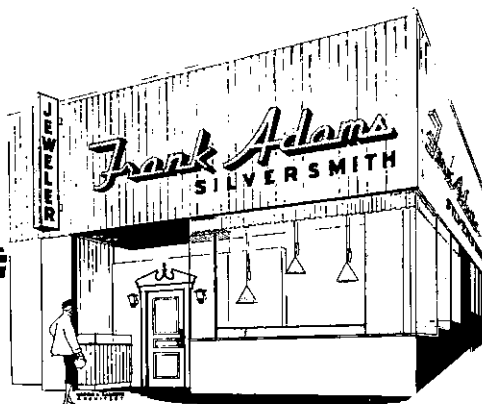
Shop Smart! See Mill Ends at

GENTILE'S

1100 Central Ave. at The Underpass
IV 2-3398 Daily 'til 9



HEmlock
9-4444



IF YOU ...
Don't Know Watches
Know ...
Your Jeweler!

WE RECOMMEND

- Omega
- Bulova
- Tissot
- Patek Philippe
- Caravelle
- Girard Perregaux
- Movado

These fine watches are properly marked. Never list priced high for discounting, cannot be purchased for less elsewhere.

It makes good sense to buy your watch from a watch expert. We have three watch makers on the premises for the best service possible.

FRANK H. *Adams*
JEWELERS - SILVERSMITHS

58 No. Pearl St., Cor. Steuben

Free Parking at All 13 Park & Shop Lots

SHOP HERE FOR FAMOUS BRAND NAME
COLONIAL FURNITURE

Solid Maple,
Pine & Cherry
Furniture for
Living Room,
Bedroom and
Dining Room

Always Spacious Parking

HOUSE of MAPLE
Furniture...

LATHAM - Route 9
EAST SOUTH OF CORNERS
CONVENIENT BUDGET PLAN

Open Evenings 'til 9 P. M.—Saturday 'til 5 P. M.
Easy Parking in Front of Store

SCHOHARIE COUNTY

QUALITY

TURKEYS

Order Now for Best Selection



RIB ROAST lb. 55¢

DELMAR MEAT MARKET

Four Corners, Delmar
HE 9-9057

Thanksgiving Program

A special program commemorating the first Thanksgiving will be presented by the Bell Telephone Hour on November 24 at 10 p. m. over WRGB.

Screen and television star Robert Young will narrate a filmed sequence of the program dramatizing the settlement of Plymouth and the Pilgrims' first Thanksgiving.

Mr. Young will also serve as host for an array of talent including jazz and classical pianist Andre Previn, singers Earl Wrightson and Lois Hunt, The Brothers Four and New York City Ballet dancers Edward Villella and Patricia McBride. Donald Voorhees will conduct the Bell Telephone Orchestra.



Just Released!

Collector's Album No. 4
from Goodyear!

Get Yours - NOW!

EXCLUSIVE! LIMITED EDITION . .
fine-quality long-play recording

19 Great Christmas Favorites
by great artists of our time

A \$3.98 to \$4.98
comparable value

ONLY **\$7**

JUST RELEASED!

AVAILABLE NOW!

Make Sure You GO this Holiday Season!

3-T NYLON

Sure-Grip

WINTER TIRES

190 Tractor-Type Cleats dig in—
pull you through snow like a tractor

As low as

2 for \$25.00

No Money Down!
Free Mounting!

GO

GOODYEAR



BRAND NEW!
Not SECONDS!
Not RETREADS!

Albert E. Oliver

INC.

The Name for Your Best Tire Deal



206 CENTRAL AVE.

HO 5-3561

ALBANY, N. Y.



**Distinguished
Names . . . in**

**Men's Wear
for Holiday Gifts.**

BRONZINI

neckwear & toiletries

COUNTESS MARA

neckwear & toiletries

ALAN PAINE

knitwear

**AQUASCUTUM,
LTD.**

rainwear

LONDON FOG

rainwear

GANT & EMBASSY

shirts

DAKS

Stulmaker's

8 James St.

just off State

Open Thursday to 9

Member Park & Shop

**JAMES W. BARTLEY
and SONS**

Plumbing, heating & electric
water pump sales & service
Clarksville PO 8-2230



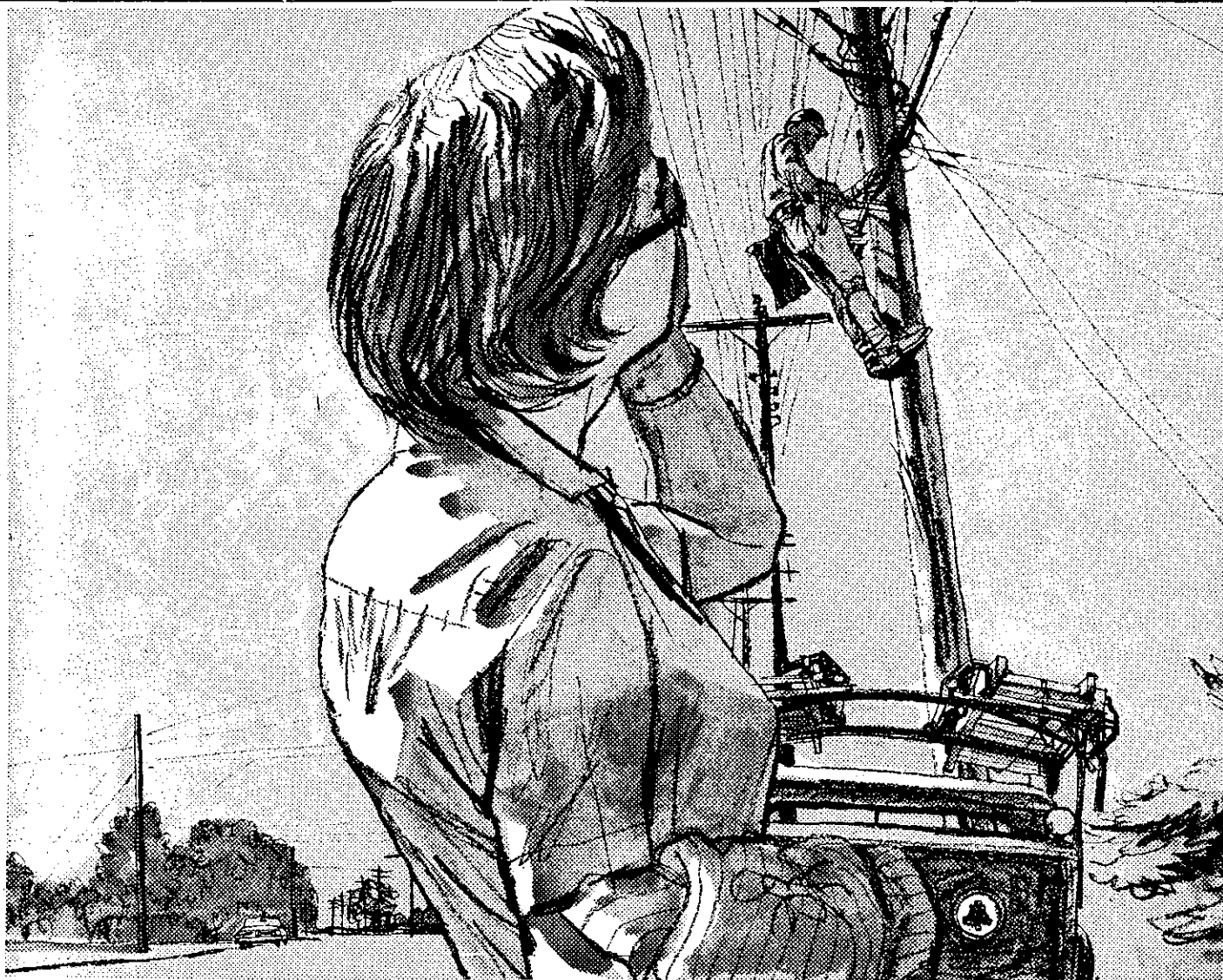
HEmlock
9-4444



MINIT MAN
CAR WASH
590
CENTRAL AVE
ALBANY

**von Bank's
TV SERVICE**
HE 4-5887

Quality - Responsibility - Honesty



When Mrs. O'Brien needed help, it came from the top of a telephone pole—of all places!



Telephone Cable Splicer
ROBERT A. ECKLUND

Sometimes it seems that people are too busy these days to help someone in trouble. But there are people ready to help. More than many people think. Take the case of Mrs. John O'Brien of Rocky Point, New York. Her husband wrote us . . .

"Am writing to tell you how thoughtful and considerate Mr. Robert A. Ecklund of your company is.

"My wife was driving down Route 25-A when a tire came off her car. She was really shaken, and didn't know what to do. She walked down the road until she saw one of your trucks and a man work-

ing high up on a pole. She called up to him and told him what had happened. Without hesitation, he came down from the pole, walked to her car and changed her tire.

"Naturally, she asked his name. She and I want to thank you for having men such as Mr. Ecklund in your company. My wife has never been treated with such courtesy by people who serve the public."

Do people go out of their way to help strangers any more? Yes, lots of people do. Telephone people do. We're glad they do.



New York Telephone
Part of the Nationwide Bell System

NEED SNOW TIRES?

**DON'T BE FOOLED BY "CHEAPIE" TIRE ADS
CHECK FOR THESE SAFETY ITEMS:**



- Are They 4-ply Tires?
- Are They Full-Tread Depth—17' 32's?
- Are They Wide Tread Gripping Tires?
- Are They All Nylon Carcasses?
- Are They New or Recapped Tires?
- Are They Full Size or "Cheapie" Size?
- Are They Fully Guaranteed?

**COMPARE ALL THESE ITEMS AT
WEINBERG'S
WE HAVE THEM ALL TO SHOW YOU**

LOW PRICES HIGH QUALITY
ON
GOODRICH TRAILMAKER MUD AND SNOW TIRES

NEW WHEELS at 50% OFF List Price
With Purchase of Snow Tires

LET US SAFETY CHECK YOUR TIRES — NO OBLIGATION

- Wheel Balancing • Complete Front End Alignment
- Brake Service

INSTANT BUDGET TERMS
WEINBERG TIRE CORP.

NEXT TO WESTGATE SHOPPING CENTER

935 Central Ave.

IV 2-4449

Open Daily 8 A. M. to 5:30 P. M. — Sat. 8 A. M. to 5 P. M.

With the Girl Scouts

As a means of furthering World Friendship, six area Girl Scout Troops, as well as the Youth Group at Westminster Presbyterian Church, have made Christmas Tree Ornaments to be used in the wards on the S.S. Hope, which is now in Conakry, Republic of Guinea in West Africa. These girls, through their efforts, have given material evidence of their deep concern and compassion for less fortunate people all over the world.

Troops participating were: Troop 115, Unionville; Troop 322, Slingerlands; Troop 136; Hammagrael; Troop 442, Delmar; Troops 415 and 548, Clarks-ville.

The Hope Project is sponsored locally by the Junior Women's Club of Albany.

Progress Club to Hold Sales

The Delmar Progress Club will conduct a number of sales of articles made by sightless workers. This is an established project for the Christmas season with the club members, and well supported by the community. Co-chairmen for this year's sales are Mrs. Robert Selkirk and Mrs. Josiah Phinney.

On Wednesday, December 2, there will be a sale at the A&P store on Delaware Ave., Delmar. The club will also be in charge of sales at the Albany Association of the Blind headquarters in Albany, on December 8.

Assisting with sales are Mesdames Stuart S. Belcher, Olin Bouck, Arthur R. Clark, Kenneth L. Clark, G. Perry Dunn,

**ARE YOU
REMODELING?**

**HAVE
ALBANY
BUILDING
CENTER
DO IT!**

PHONE HO 3-3211

Charles L. Katz, Murray O. Klingaman, Everett C. Long, Raymond G. Rice, Leo Rook, Howard W. Sammons, Harold L. Williams and George Winegard. Additional sales will be announced later.

First Aid Class to Start

An American Red Cross Standard First Aid Course will open at the Voorheesville Grade School

on Monday evening, November 23rd.

According to announcement from J.A. Berger, R.D. #1, Voorheesville, New York, who will be teaching the course, it will run for five Monday evenings from 7:30 until 9:30 p.m.

The course is open to all adults interested in taking American Red Cross First Aid in preparedness in handling home accidents as well as knowing what to do

and what not to do in cases of emergencies.

Enrollment may be made by contacting J.A. Berger at Telephone No. RO 5-2357, Voorheesville. There is no charge for the course but a fee of 75¢ will be charged for First Aid textbooks to be used during the course.

Gymnasts to Appear in Albany

Tomorrow, Friday, November 20, the Syracuse University Gym Team will present a program of Gymnastics at Giffen School on South Pearl Street in Albany.

The team is coached by Paul Romao who recently returned from Hollywood where he made a movie on gymnastics.

THAT GOLDEN LOOK!

Gold Jewelry set with
Amethyst - Pearls - Diamonds - Topaz
Cultured Pearls to 9½ M.M.

Elizabeth M. Booth, Jeweler

at

11 North Pearl Street, Albany, New York

Studio 1002

Phone 434-3282

Phone
439-4101

Dorothy Lynn

INC. 360 Delaware Avenue
Delmar, N.Y.

Hours - Daily 9-5:30, Friday 9-9

Gossard-Artemis
"Fit-Togethers"



PEIGNOIR
\$15.00

Available in Gold
Mist, Royal Mist,
Flame Mist



These Happy People

This week, thousands of dollars have gone to members of our 1964 Christmas Club. It's going to be a happy, bill-free Christmas for many people.

If you'd like a check for \$100, \$200 or \$500 next year at this time, join our Christmas Club for 1965. Do it this week.



the **HOME**
SAVINGS BANK



MAIN OFFICE

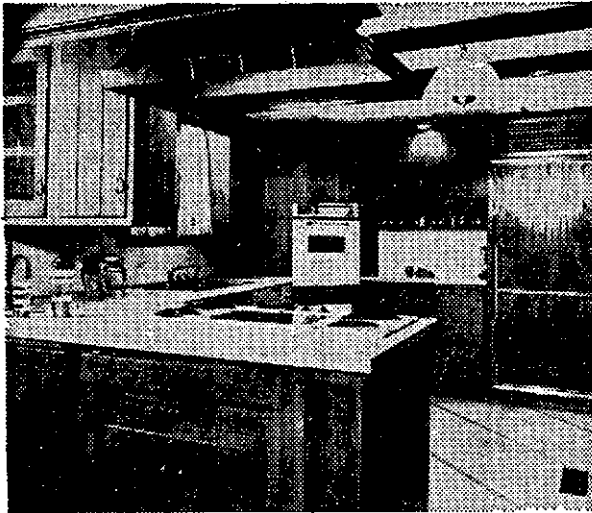
11 North Pearl St.

CENTRAL AVE. OFFICE

163 Central Ave.

BANKING HOURS: Monday thru Friday 9 AM to 3 PM—Thursday 9 AM to 8 PM

DISCOVER Colonial



Rustic Country Charm

By

WOOD-MODE
kitchens®

DISCOVER...

Colonial! Now you can recapture the homespun authentic Early-American country kitchen charm with satiny "hand-rubbed" cabinets by Wood-Mode. Your Colonial kitchen complete with Revco built-in refrigerator and "Programatic Oven" will be custom designed and custom built to your individual specifications.

A Wood-Mode kitchen is not simulated Colonial but authentic V-joint solid wood planked construction —the only authentic V-joint offered by any kitchen manufacturer. There are six beautiful Wood-Mode styles available including Colonial, Lexington, Concord, Provincial, Classic and Contemporary. Remember that the more your kitchen does for you, the less it really costs and now you really can afford the prestige of Wood-Mode—America's most beautiful kitchen value.

Whether your building a new home or remodeling we have a complete professional design staff that will guide you right from the planning stages thru every installation detail. Payment arrangements can be tailored to fit your budgetary needs.



CALL 869-0044

Mon. thru Fri. 10 A.M. - 9 P.M. - Sat. till 1 P.M.

Students Visit Grand Union

32 students from the Distributive Education classes at the Bethlehem Central Senior High School visited the Grand Union Warehouse in Waterford. The field trip supplemented their class work on retailing procedures.

Peter Compisi, manager of the Personnel Department, escorted the students through the plant. They saw data process-

ing in action, automated inventory control, the process of ripening bananas with gas, the use of icing in shipping produce in railroad cars and a grocery inventory of over 2 million dollars. The students got an overall picture of storage and handling facilities.

They bought their lunches in the lunchroom exclusively from vending machines.

Robert Pierson, business education teacher at Bethlehem

THE WOOLERY

Route 66, MALDEN BRIDGE, NEW YORK

Tues. thru Fri. 12-2:30 - Sat. 1-4:30 - Closed Mondays
Open Sundays by Appointment only - Phone Nassau 8-2162

Imported Cardigans and Fabrics

Ruanas from South America

(Similar to Ponchos)

Knitting Yarn from Scotland

Rya Rug Yarn and Backings from Sweden



for quality
home heat

OIL!

for quality
oil fuel

ATLANTIC!

We're mighty proud to be the distributors of Premium Quality Atlantic Heating Oil.

Through an exclusive process—triple-refining—this fine fuel is specially designed for complete home heating comfort. It burns clean and steady, gives you top value for your heating dollar.

For dependable home heat at its best, call

REDMOND & BRAMLEY

OIL CO., INC.

HO 5-1433



THE SPOTLIGHT

Central Senior High, planned and chaperoned the trip.

Simmons on Student Council

Recently elected to the Student Council of the Russell Sage College evening students association for 1964-1965 was Patrick Simmons, 21 Oldox Road, Delmar.

Organ Recital at Cathedral

Scott Q. Hauser will present an organ recital at All Saints Episcopal Cathedral at 4 p.m. on Sunday, November 29. Scott, 16, has been organist at Union Dutch Reformed Church for nearly two years. He is a pupil of Lloyd Cast, Cathedral organist.

Subscribe to THE SPOTLIGHT

Open Mon. thru Fri. till 8



278 Delaware Ave., Delmar

**NOW AVAILABLE
finest
one-can
sealer
and
finish coat**



Protects and beautifies floors, furniture, paneling, woodwork.

Available in Gallons, Quarts and Pints

PRO **Delmar**
LUMBER &
BUILDERS' SUPPLY, INC.
HE. 9-9968 WE DELIVER
340 DELAWARE AVE. DELMAR N.Y.

IN-HOME RUG & FURNITURE CLEANING . . .

BY ABBEY'S professionally-trained masters of the trade. Call for complete details and estimates.

STILL TIME! Have your
Rug & Furniture cleaned
in time for the Holidays



Open Thurs. & Fri. nights 'til 9 -
Daily 9 A.M. to 6 P.M.

PLANT &
SHOWROOM

243
Delaware
Avenue,
Elsmere
(Just above
Delaware
Plaza)



**FREE Pickup
and Delivery**

HE 9-9978

**3 Pc. SET
FURNITURE \$30**

**9 x 12 Domestic
\$8.65**

(Beautifully Cleaned)



For QUALITY & SERVICE - Stop In.

Ample Parking in rear.

HE 9-4949

SPOTLIGHT CLASSIFIEDS

HE 9-4949

CLASSIFIED AD POLICY

Classified Ads in the Spotlight must be paid for when the ad is submitted. We must enforce this policy strictly. Our rates are too small to permit invoicing and bookkeeping on these accounts. Please do not ask us to make any exception to this rule.

Your copy and remittance must reach us on Friday before 4:30 P.M. in order to appear in the following Thursday issue.

Classified Advertising RATES

10¢ per word for each insertion;

\$1 minimum.

CALL HE 9-4949

Write, or stop in at our convenient office:
154 Delaware Avenue

ALTERATIONS & SEWING

ALTERATIONS and sewing. M Buess. HE 9-1270. tf
ALTERATIONS and sewing. Kirk Hauser. HE 8-0014. tf
ALTERATIONS and sewing. Pickup. HE 9-4636. tf
ALTERATIONS, sewing dresses, drapes, custom slip covers. Call Marie. HE 9-2052. 4t123

APPLES

BEST PLACE to buy CHOICE McIntosh, Spy, Cortland, Delicious, Baldwin and Greening apples. Fresh brown eggs. Haswell Farms, Feura Bush Rd. at Murray Avenue. HE 9-3893. Deliver Tri-Village. tf

APPLIANCE SERVICE

WESTINGHOUSE, RCA, Kelvinator. Guaranteed used washers. Area Appliance Service. HE 9-2953. tf
RAE Small Appliance Repair. We repair household appliances, vacuum cleaners, power tools, electric clocks, shavers, fans, lamps, etc. FREE pickup and delivery. RO 7-3821. tf

BLACKTOP

ETTO PAVING COMPANY, work guaranteed, reasonable price. Free estimates. HE 4-3779. tf
LUZZI BROS., blacktop pav-

ing, driveways, sidewalks, parking lots and garage floors. Free estimates. 482-3484. tf

BUILDING & CONTRACTING

HOMES, garages, remodeling, additions, "easy terms." Hogan Construction Co. IV 2-4693. tf

CARPENTRY

REMODELING - All types of carpenter work. H. A. Ertel, HE 9-1048. Ed Hehre, HE 9-1198. tf

CLEANING SERVICE

LOCKMOR window, cleaning, resident and office maintenance, complete. IV 9-0121, 489-2474. tf

HOUSE CLEANING, window washing, floor maintenance, also anywhere cleaning you need. Old Holland Cleaning Service, Inc. RO 7-2739. 4t1119

DOLL REPAIRING

DOLLS repaired, restring, costuming. Reina Deitz. HE 6-1690. tf

DRAPERIES

TREMENDOUS selection of new decorative fabrics. Finest workmanship at low, low prices! FREE "Shop At Home" Decorating Service. Phone HE 6-8568, Marcus Fabrics, 331 Central Ave., Albany. tf

FIREPLACE WOOD

CHOICE HARDWOOD, also kindling. HE 9-2072. tf
FIREPLACE wood: hard, dry wood cut any length desired. UN 1-8042. 4t1210
SEASONED firewood and kindling, \$14 face cord, delivered \$18, smaller amounts \$2. Located on Bender Lane, 1 mile from Elsmere Ave. Alan Vanderwood. HO 2-4343. 10t1217

FUNERAL DIRECTORS

M. W. TEBBUTT'S SONS
Albany Delmar
420 Kenwood Ave.
HE 9-2212

Serving All Faiths
For Over 100 Years

FURNITURE REFINISHING

FURNITURE repairing, refinishing, re-upholstering. French. HE 4-0633. tf

FURNITURE UPHOLSTERY

DROZDOL Upholstering Service.

Experts in home furniture upholstery. 16 Judson Street. HO 5-6795. tf

FORMAL RENTALS

MEN's - All types available. Latest styling, for graduation, weddings, dances, etc. On 24-hour notice. Reasonable TAD's, 4 Corners. HE 9-4511. tf

INSTRUCTIONS

LEARN to drive, \$5. per hour. Albany Academy Driving. HO 2-1309. tf

DESIRE a contract bridge teacher? Write Miss "E", Spotlight, Inc.

CLASSIQUE DANCING SCHOOL

154A Delaware Avenue
CHILDREN AND ADULTS
PRIVATE OR GROUPS
All Types of Dancing and
Body Conditioning

HE 9-3331 Bagha Follett

INSURANCE

LIFE, Endowment, Education, Mortgage, Hospitalization, Disability Income, and Annuities. Ethel J. Hock, Metropolitan Representative. 482-5116. tf

JEWELRY

EXPERT jewelry repairs. Diamond setting, engraving. Wedding and engagement rings, reasonable. Your trusted jeweler D. Le Wanda, Delaware Plaza Shopping Center. HE 9-9665. tf
DIAMONDS reset with modern settings, pearls restring. Expert jewelry repairs. Elizabeth Booth, 11 North Pearl. 434-3282. 4t1119

MASON WORK

REPAIRS or new work. Chim-

ney, porches, brickwork, plaster, fireplaces, flagstone, patios, etc. HE 9-1763 after 5. tf

MASONRY and carpentry. Experienced. Fireplaces. Alterations. Additions. Fred Chalcrafts. HE 9-1796. tf

MOVERS

LONG FOR LONG DISTANCE.

Local and long distance moving. Agents for Atlas Van Lines. Free estimates. D.E. LONG & SONS. HO 3-6626. tf

D.L. MOVERS. Furniture and appliance specialists. Reasonable rates. Dick Leonardo. HE 9-5210. tf

ORIENTAL RUGS

NEW AND USED, in all sizes and colors at reasonable prices. Washing and repairing by native expert. Pickup and delivery. Free estimates. Rod Kermani, Stop 3, Albany-Schenectady Rd., EX 3-6884 or IV 2-0457. tf

PAINTING & PAPERHANGING

INTERIOR, exterior painting. Free estimates. Work guaranteed. Jim Vogel. HE 9-9718. tf

INTERIOR and exterior painting. Also carpentry work. Frank Salisbury. Days: HE 9-5527, nights: HE 9-1355. tf

FREE estimates - interior, exterior painting, paperhanging. Insured. Don Vogel. HE 4-8370. tf

PERMANENT WAVING

SPECIALIZING in Breck, Realistic, Rayette and Caryl Richards permanents; hair

SPECIAL BOSTON FISH FRY 55¢

Served on a Toasted Roll with Cocktail Sauce

Served with French Fried Potatoes 75¢

Served with Tossed Salad and Dressing 75¢

Served with French Fried Potatoes & Tossed Salad
85¢

("Take-out" Orders on above items available)

TOLL GATE

IN SLINGERLANDS

R. E. ZAUTNER

PHONE 439-9824

R. N. ZAUTNER

tinting and bleaching.
MELE'S BEAUTY SALON,
 Plaza Shopping Center, HE
 9-4411. tf

SPECIALIZING in Helene Curtis,
 Breck, Rayette permanents;
 "Wella Scalp Treatment."
 Alice Farley, 11 Ridge Rd.,
 Elsmere. HE 9-2225. tf

PHONOGRAPH REPAIRS

PHONOGRAPHS
REPAIRED
 needles installed. Blue Note
 Shop, 156 Central Avenue.
HO 2-0221

RENTALS



WEEKEND \$12
SPECIAL

5 P.M. Fri. to 9 A.M. Mon.
 ... Plus 10¢ per mile

Rent a New Ford Galaxie
 or Other Fine Car

For Albany Reservations
 Phone **IV 9-5487**
 Central & Watervliet Aves.

For Schenectady Reservations
 Call **FR 7-7373**
 Erie Blvd.

SERVING ALBANY - TROY
- SCHENECTADY AREA

Inquire About Our Low
 Truck Rental Rates

SAW FILING

SAWS sharpened, chain saw ser-

BOB'S
AUTO TOP
 NOW LOCATED AT

300 Delaware Ave. (rear)
 Tel. HE 9-3012
 Antique and Sports Car
 Upholstery Our Specialty

vice. N. Livingston, 4
 Mountainview, Karlsfeld. IV
 9-1979. tf

SCISSORS SHARPENED

SIX pairs medium size scissors
 \$2; also pinking and grass
 shears, knives, lawnmowers.
 Call for and deliver. HE
 9-3893. tf

SEPTIC TANK SERVICE

NORMANSKILL Septic Tank
 Cleaners. We install dry
 wells, septic tanks, drain
 fields. 767-9287. tf
DELMAR SANITARY CLEAN-
ERS. Serving Tri-Village
 area over 20 years. HE
 9-1412 tf

SHOES

ONE dollar for your children's
 old shoes, (regardless of condi-
 tion) toward purchase of a
 pair of Dr. Posner or Jumping
 Jacks shoes. Waldman's Shoes
 94 State St., Albany. 4t1126

SLIPCOVERS & UPHOLSTERING

SLIPCOVERS and upholstery,
 custom made. Tremendous
 selections of fabrics. Finest
 quality workmanship. Lowest
 Prices! Free "shop at home"
 service. Phone 489-4795
 Marcus Fabrics, Stuyvesant
 Plaza, Albany.

SNOWBLOWERS

ARIENS, Snowbird, Lawnboy
 snowblowers and lawnmowers.
 Sales & Service. Free storage,
 pickup and delivery. **HILCHIE'S**
HA RDWARE, Delmar. HE 9-
 9943. 6t1217

TREE SERVICE

HERM'S Tree Service: trimming
 and removal (insured). Call
 Albany IV 2-5231. 4t1126

TUTORING

PHYSICS, chemistry, biology.
 Former college professor.
 Reasonable rates. Owen
 France. PO 8-2373. 2t1126

VACUUM CLEANER SERVICE

AUTHORIZED Hoover Dealer,
 sales & service all makes.
 Free pickup. Best vacuum
 service, 483 Washington Av-
 enue, Albany. HE 6-4147. tf

WATCH REPAIRING

EXPERT WATCH, clock and
 jewelry repair, Reasonable

LAWNMOWERS WINTER STORAGE AND REPAIRS BENNETT'S

Tri-Villages only Servicing Dealer
 Ph. HE 9-1862 561 Delaware Av.

prices. Your trusted jeweler:
D. Le Wanda, Delaware Plaza
 Shopping Center. HE 9-9665. tf

WATER PURIFIERS

INSTANTLY removes rust, iron,
 odors, chlorine, fluorine, sul-
 phur, without salt or refills,
 no chemicals. Free water a-
 nalysis. 434-9315, 482-4134.

MERCHANDISE FOR SALE

ALUMINUM combination win-
 dows, doors, siding, etc.
 Finest quality at lowest pri-
 ces. Taylor Aluminum Pro-
 ducts. RO 5-2856. tf

ANTIQUES bought and sold at
 the sign of the Coffee Mill,
 67 Adams Pl., Delmar. HE
 9-1021. tf

FURNITURE: our low cost op-
 erating policy enables us to
 bring you **BIG SAVINGS** on
NEW furniture, rugs and bed-
 ding. **BURRICK FURNI-**
TURE, 560 Delaware Ave.,
 Albany. Just across the
 Thruway Bridge in Albany.

KITCHEN cabinets, appliances
 and countertops for remodel-
 ing or new construction. Lux-
 urious maple cabinets, three
 finishes, two styles to choose
 from. Immediate delivery.
 Free estimates. Tailored
 kitchens. RO 5-2856. tf

ALUMINUM combination win-
 dows, all sizes, triple-track,
 best grade \$10.50 + 2.50
 installation. **GERRITY LUM-**
BER. 459-3311. 8t123

MERCHANDISE CLUB now form-
 ing at **TAD'S**. Club begins
 soon and runs for 25 weeks.
 Stop in or phone for details.
 HE 9-4511. 5t1126.

"FASHION Tress" wig, auburn
 color, human hair. Never
 worn. HE 9-4949 tf

KNAPP shoes, savings to six
 dollars. Phone Perry HE 9-
 1221, HE 4-7051. 2t1112.

THE KNIT-WIT YARN SHOP.
 Hand-made mittens. Feura
 Bush. HE 9-3676. Closed Tues-
 day. tf

MEDIUM size Ivers and Pond
 baby grand piano, perfect
 condition, \$450. G.H. Barth-
 wick. HE 4-9312. 2t1119

DOLLS' clothes made to order.
 Reasonable. HE 9-3071. 2t1119

HAMBURG that has a good
 steak taste, 79¢ lb. Also
 hamburg especially priced
 for parties or freezer orders of
 20 lbs. or over. **GUTMAN'S**
 "The Old Fashioned Meat
 Market," Elsmere. HE 9-
 2250.

GERT'S a gay girl - ready for
 a whirl after cleaning carpets
 with Blue Lustre. Rent elec-
 tric shampooer \$1. Adams

Hardware, 380 Delaware Ave-
 nue, Delmar.

STEREO Amplifier, 20 watt, ex-
 cellent, \$30. Assorted electric
 trains, equipment, "HO" gaug-
 good condition, \$50. HE 9-
 2234.

PERSIAN rug, excellent condi-
 tion. Call 439-5053 after 6.
STOVE \$60; dryer \$40; washe
 free pickup; antique chest
 mirror, \$55. 439-4319.

MAPLE baby's chifferobe; bun-
 beds complete, \$35; five fluor-
 escent fixtures with bulbs, \$
 each. IV 9-0938.

SHOW CASE 70" long x 40" high
 x 20" wide, 3 sides plus to
 glass, storage cabinets below
 two adjustable shelves. Excel-
 lent condition. HE 9-1217
 after 6 p.m.

HOSIERY and lingerie with fre-
 replacement guaranteed. Cath-
 erine Hyserman. RO 7-3074.
 6t1224

OLD PRINTS - Historic Alban-
 and Hudson River views for
 Xmas gifts. HE 9-5086.

TURKEYS, "Jandel," finest of
 the quality birds, 55¢, 8-1
 all hen turkeys. **ON ORDER**
ONLY. Gutman's, "The Ol-
 Fashioned Meat Market," 6
 Delaware Ave., Elsmere. HE
 9-2250.

CARDINAL Hill Country Stor-
 and Gift Shop, 6 Fuller Road
 Ravena, off 9-W by Log Cab-
 in, first right then first left.
 Week-end specials: homemad
 apple pie, pecan rolls. Order
 taken for fruit cake. Phon
 756-7821. Hours: open daily
 Sunday, 2-7 p.m.

SNOW TIRES, 8:00x14, almo-
 new; also snow tires, 6:70x15
 on wheels or wheels separate
 HE 9-4262 evenings.

ACCORDION, mirror, chairs
 closet, dishes, roasters, iron
 board, hamper. HE 9-4721.

PIANO, apartment size, baby
 grand, mahogany, \$500. HE
 9-2892.

XMAS trees; Select a choic
 sheared Scotch Pine now for
 later cutting. France's Tre
 Farm, Lawson Lake Road
 Follow route 32 south from
 Feura Bush 7 miles, turn right
 Watch for signs. PO 8-2373
 2t1112

SNOWBLOWER - Jacobsen snow-
 blows, one and four speed
 forward. Authorized Jacobsen
 Dealer, Sales and Service
 M. Gudz, 138 Elm Avenue
 Delmar. HE 9-2025.

MAHOGANY twin beds, \$60
 dressing table, \$20; flat desk
 \$15; black storage desk, \$20
 electric Singer, \$15; table
 chairs. HE 9-1921.

DURO water softner \$50, shal-
 low water pump, \$50. On
 80 gallon water tank, \$20
 HE 4-0680 after 6 p.m.

TABLE saw, 8 inch, on star-
 with motor, \$40. HE 9-2988

SNOW TIRES, wheels, 6:70x15. Ford etc. \$15. HE 9-4658.

AUTOMOTIVE FOR SALE

Saab Authorized Dealer

NEW SALEM GARAGE

New Salem Route 85-A
DeWitt and Fred Carl
- NEW AND USED CARS -
Telephone RO 5-2702

962 PLYMOUTH 4 door, 6 cylinder, blue, \$1050. HE 9-4386.

960 VOLKSWAGEN - very good condition. After 4 p.m. HE 9-5346.

953 CHEVROLET Bel-Air. R.6H. - very clean, standard transmission. Asking \$135. HE 9-3420

PETS

PET SUPPLIES: Dog and cat collars, leashes, baskets, toys, sweater, blankets, beds, cushions, etc. Price Greenleaf Inc., 14 Booth Rd., Elsmere. Tel. HE 9-9212. 4t1126.

OST: Male golden retriever, no collar. Comes to name: "Rufus." HO 3-0405.

LA MESE sealpoint kittens. HO

WANTED

Listings in Elsmere, Delmar, and Slingerlands. Many recent sales in this area have depleted our inventory.

O'CONNOR SULLIVAN

HO 5-2271. Eves. HO 5-1929.
LODGE & HOWARD STS.
ALBANY, N.Y.



Colonial Acres

RT. 32, GLENMONT, N.Y.

FROM ALBANY 1 MILE SOUTH
ON 9W, RIGHT ON ROUTE 32.
OPEN DAILY 7 A.M.-5 P.M.
SUNDAY 2-5 P.M.

OR ANYTIME BY APPT.

A community of Early American Homes of authentic design offering the warmth and charm from the past with the modern conveniences of today.

Plus the added enjoyment of swimming pools and now under construction a nine hole golf course.

PHONE HE 9-9231

5-9376.

BEAGLE puppies, \$15 each. 10 Wiggand Drive, Glenmont. 436-9119.

WANTED TO BUY

STEREO or HI-FI, good condition, also small tape recorder. HE 9-1337.

SOUND gelding or mare, prefer part Arabian, trained or green broke, English or Western. Evenings. HE 9-2277.

REAL ESTATE FOR SALE

COLONIAL ACRES, Rt. 32, Glenmont, N.Y. "A community of Early American homes." Phone HE 9-9231. tf

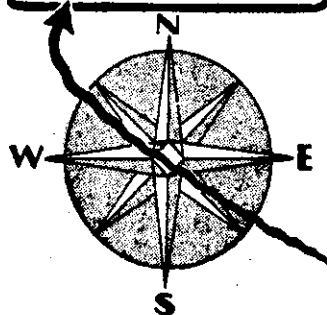
THREE bedroom ranch, playroom, carpet, drapes, corner lot, \$18,500. HE 9-5993.

\$4500 - **NEAR** Normanside Country Club: Improved building site with view of Helderbergs included in 12 acre tract having potential. HO 3-3332. 3t1126

REAL ESTATE FOR RENT

OFFICES: 5 rooms, professional or business. Heart of Delmar, previous Doctor, will divide. Your broker or phone 439-1777. 2t1126

**THERE'S ONLY ONE
DIRECTION FOR THE
BEST USED CARS IN
TOWN. EVERYONE WILL
DIRECT YOU TO....
MARSH HALLMAN**



**Fast Becoming
New York State's
Largest
Chevrolet Dealer**

**OVER 300 CARS
NOW IN STOCK**

**Marsh Hallman
CHEVROLET**

781 CENTRAL AVE.

IV 9-5551

Open Evenings

WANTED TO RENT

EXECUTIVE and family, just transferred, desire immediate rental: one family, 3 bedroom home, up to \$130, Delmar, Elsmere, Slingerlands area. Call HE 9-2123.

WANTED Dry storage for winter for Plymouth car. HE 9-9704. **GARAGE**, one stall, near Delmar Fire Hall. HE 9-3264.

REAL ESTATE WANTED

WE have immediate buyer for

4-bedroom center entrance Colonial to \$28,000. Call Brownell Realty, 355 Delaware Ave., Delmar. HE 9-4911. 2t1119

TRANSPORTATION

WANTED ride Elsmere to workshop, near Montgomery Wards, mornings. HE 9-1092.

HELP WANTED

WANTED cleaning woman one day or two half days a week. Own transportation. HE 9-4683.

GO ORANGE FORD

STOP

LOOKING

START

DRIVING!

**GET A GREAT DEAL ON A USED CAR
TOP TRADE ALLOWANCES
TERMS TO FIT EVERY POCKETBOOK**

'64 CHEVROLET \$2795

Super Sport, 2-door hardtop V8, Automatic trans., pow. steering, power brakes, radio, heater.

'62 FORD Anglia \$695

4-speed - Radio and Heater.

'63 OLDSMOBILE \$2195

4-door hardtop, auto. trans., power brakes, power steering.

'60 FORD Truck \$895

PICK-UP, F250, 3/4-ton, 6 cyl., automatic transmission.

'60 FORD Conv. \$895

8 cyl., radio and heater, standard transmission.

'61 FORD Truck \$1095

F100, 1/2-ton, PICK-UP, Custom cab, radio and heater.

'62 Volkswagen \$1095

Radio, deluxe, 2-door.

'61 CHEV. Corvair \$895

Automatic transmission, radio and heater.

GO ORANGE now for the best deal, or for parts and service. Go to the biggest Ford Dealer in the Capital District now. Parts and Service Open 7:30 A. M. to 11 P. M.

ORANGE MOTORS

CO. INC.

FORD—FALCON—THUNDERBIRD

795 CENTRAL

IV 9-5414



Open 'til 9

MEN'S SPECIALS!

famous-make

PAJAMAS

reg. 4.00 **2.99**

From a top manufacturer, whose name we cannot mention! Handsomely tailored, full-cut coat-style pajamas in 100% sanforized cotton . . . all fully guaranteed! Large selection of all-over patterns in assorted colors. A-B-C-D.

T-SHIRTS

by Reis

6 for 5.00

BUY-SIX-AT-A-TIME-AND-SAVE! Shrink resistant, 100% staple cotton (except 20% nylon in collarette) shirts for complete comfort and absorbency. White only, S-M-ML-L.

S-T-R-E-T-C-H SOX

**.69 or
3 for 2.00**
reg. 1.00 each

Soft, durable, marvelous fitting sox by a nationally known maker. One size fits all! Colors to complement the most fastidious wardrobe!

nationally advertised brand
ORLON-PILE, ZIP-LINED

ALL-WEATHER COATS

reg. 32.95 **24.99**

Water-repellent coats with zip-out, orlon acrylic pile-linings for total comfort. Large assortment of colors and patterns. Regulars, shorts, longs, sizes 34 to 46.

We Will Be Closed
**THANKSGIVING
WEEKEND**

Thurs., Fri. & Sat.
Nov. 26, 27, 28



HE 9-4444



Garden Shoppe

Feura Bush Road, Glenmont
Between 9-W and Elsmere Ave.
Phone 439-1835



**3 STEPS TO SAVE YOUR VALUABLE
EVERGREENS FROM DEADLY
WINTER KILL.**

1. Water well
2. Mulch with **PEAT HUMAS**
3. Spray with **WILT PRUF**

100 lbs. Humus - Only \$1.98

Convenient **NIGHT SHOPPING** in our
Fully Lighted Nursery Sales Yard.
OPEN EVENINGS TIL 8 P.M. THURS., FRI., & SAT.
Daily 8-6 Sunday 10-5

Permit No. 10
PAID
U. S. POSTAGE
Bulk Rate

