

# The Spotlight

VOL. X, NO. 29

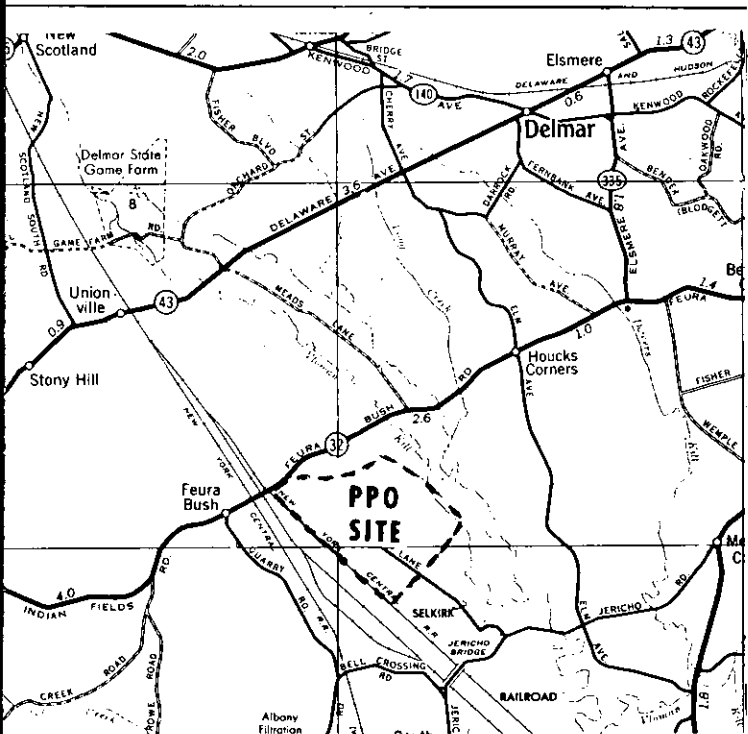
JULY 22, 1965

\$1.00 PER YEAR

10¢ A COPY



Planning their Annual Steak Roast are these members of The Democrats of Bethlehem: from left to right, seated, are Bob Gibbs, ticket chairman; James Kennedy Jr., President, Democratic Club; Mrs. Fred Darbecker, ticket co-chairman. Standing are James Denn, general chairman; and Mrs. Donald Steffens, publicity. The Roast will be held at Murray-Jennex Sunset Park on Saturday, August 21, starting at 12:30. Dinner will be served at 5:30.



Map above shows the location of new GE Plastics Plant

## PLASTICS PLANT PLANS ANNOUNCED BY GE

The General Electric Company will build a multi-million dollar plastics plant in the town of Bethlehem, about 10 miles south of Albany, N. Y.

The facility will be used for the manufacture of polyphenylene oxide, a new plastic announced by General Electric last December. Capable of producing 10 million pounds of PPO a year, the Bethlehem plant will be the first of its type in the world.

The new plant site is located on a 500-acre tract on Route 32 near the Selkirk railroad yards. Preliminary construction is already under way by the general contractor, Blaw-Knox Company, Pittsburgh, Pa. The facility is expected to be in operation by mid-1966 and will employ approximately 150 persons at the start, most of whom will be professional personnel.

(Continued on Page 2)

## TOWN BOARD PASSES ORDINANCE REGULATING WATER USE

The Town Board of the Town of Bethlehem, Albany County, New York, does hereby enact and ordain as follows:

Section 1. The Town of Bethlehem is now in the fourth year of drought and it is impossible to forecast when the drought will end. As a result, the supply of water available for use in Water District #1 has decreased to an appreciable degree, and it is the belief of the Town Board that steps should be taken to conserve the water supply and that restrictions should be imposed on the use of water and penalties for violation of such restrictions.

Section 2. The use of water for all swimming pools, filling or make-up, wading pools, watering lawns, gardens, shrubs and trees and washing cars, both private and commercial, sidewalks, driveways, service stations and other similar purposes including any outdoor use, is hereby prohibited except that for four two-hour periods during each week, from 6:00 A.M. to 8:00 A.M. and 8:00 P.M. to 10:00 P.M. on Tuesdays and Fridays, hand-held and hand-operated hoses may be used for watering lawns, gardens, shrubs and trees and water may be used during the forgoing morning hours to fill wading pools which are not in excess of 6 ft. in diameter to a depth of not to exceed ten inches. This exception shall not be construed to permit the use of sprinklers, perforated hoses or similar devices.

Section 3. The Superintendent of Water District #1 is hereby granted authority, in accordance with regulations to be promulgated by him, to permit additional use of water by bona fide commercial nurseries that were in business on June 1, 1965.

Section 4. A violation of this ordinance shall be deemed an offense and shall be punishable by a fine of not to exceed One Hundred (\$100.00) Dollars, and in addition thereto the Town Board after a hearing with the members of the Town Board may cut off the supply of water to any person or persons violating this ordinance, and to any property on which a violation occurs.

Section 5. Nothing contained herein shall be construed to prohibit the use of water from a private supply of water that is in no way connected to the supply lines of Water District #1.

## Awarded Research Fellowship

F. Robert Jordan, Jr., son of Mr. and Mrs. F. Robert Jordan of 22 Bartlett Lane, Elsmere, has been awarded a summer research fellowship at Albany Medical College, where he recently completed his second year of study.

Mr. Jordan is performing research under the supervision of faculty members in the department of physical medicine. The fellowship is supported by a grant to the Medical College from the U.S. Public Health Service.

The summer fellowship program at Albany Medical College is designed to teach selected medical students the methods and value of medical research. Sixty-seven undergraduates of the college are spending their summer vacations in this way.

**NOTICE**  
**Bethlehem Recreation**  
**Band Concert**  
**Thursday, 7:30 P.M.**  
**Clarksville**  
**Parking Circle**

**Now!** Proudly announcing new ownership and management for the Crestwood Pharmacy

## Hal's Crestwood Pharmacy

8 PICOTTE DRIVE AT WHITEHALL ROAD — 438-5354

H. W. Seitz, B.S., Reg. Pharmacist, Proprietor

*Service with Dependability*

**FREE DELIVERY** during store hours

(medical emergencies any time)

A COMMUNITY BULLETIN BOARD we invite you to use  
**DELICIOUS "ALWAYS FRESH" Fanny Farmer Chocolates**  
(an open box is on hand for your taste approval)

American Express Money Orders - All your postage stamps requirements met - Notary Public Services - Sunday newspapers and high quality paper back books.

**FILLING YOUR PRESCRIPTION IS THE MOST IMPORTANT SERVICE WE PERFORM!**

Let us be YOUR modern and reliable full service Drug Store . . . willing and able to meet all of your family's health needs.

## Summer Clearance Sale

ENTIRE STOCK — Summer	Reg.	SALE PRICE
<b>SPORT COATS</b>	\$39.95	\$31.00
	35.00	28.00
	29.95	24.00
	42.50	34.00
<b>ENTIRE STOCK</b>	12.95	10.36
<b>TROPICAL DRESS SLACKS</b>	13.95	11.16
	16.95	13.56
	17.95	14.36
	19.95	15.96
<b>ENTIRE STOCK — Short Sleeve</b>	5.00	4.00
<b>SPORT SHIRTS &amp;</b>	5.95	4.75
<b>SHIRT JACS &amp; KNITS</b>	6.95	5.65
	8.95	7.00
<b>BERMUDAS</b>	5.95	4.75
	6.98	5.50
<b>TIES</b>		3 for 5.00
	2.50	or 1.85 each
<b>OUTERWEAR</b>		20% OFF
MEN'S (famous maker) <b>SUITS</b> (only 10)	45.00	35.00
<b>ENTIRE STOCK — Men's SWIM WEAR</b>		20% OFF
MEN'S Short Sleeve <b>DRESS SHIRTS</b>	5.00	20% OFF
	5.95	
<b>ENTIRE STOCK —</b>		
Boys' <b>BERMUDAS</b>		
Short Sleeve <b>SWIM SUITS</b>		
<b>SPORT SHIRTS</b>		20% OFF
<b>KNIT SHIRTS</b>		
<b>SHIRT JACS</b>		
<b>DRESS SHIRTS</b>		

BOYS' SUMMER Unlined **JACKETS** (5 only) 5.98 4.75

**Paul Mitchell's Men's Wear**



99 DELAWARE AVENUE, ELSMERE, N.Y.

TRADITIONAL CLOTHING FOR THE MODERN MAN

STORE HOURS: Wed., Thurs., & Fri. - 9:30 to 9:00

Mon., Tues., & Sat. - 9:30 to 6:00

## PLASTICS PLANT (Cont'd.)

Dr. John F. Welch, manager of CDO's Polymer Products Operation, Pittsfield, Mass., said that while the plant is being constructed, PPO will continue to be available in truckload quantities from a developmental facility in Pittsfield. Dr. Welch's Operation has the domestic responsibility for all phases of the PPO business.

Dr. Welch said the Capital District site was chosen from a



**pretty soft**

Waves and flowers . . . knit in traditional Fair Isle design . . . go round the neck of our shetland cardigan. By that canny John Meyer of Norwich, who matches it to an umbrella-gored shetland skirt. Both in beautiful shades of redberry, blueberry, peat brown, glen green. Cardigan, 34-40, \$20.00; skirt, 8-14, \$18.00.



Summer Hours: Closed Mondays  
July and August ONLY  
Daily 10 a.m.  
Evg. Wed., Thurs., Fri.

number of locations studied. He said it was selected because of its excellent service by rail, air and highway facilities and its close proximity to the GE Research Laboratory in Schenectady where fundamental research on PPO and related materials is continuing.

Dr. Welch also noted that other favorable factors for the Capital District included the excellent living conditions for employees and the nearness of well-regarded colleges.

Dr. Welch and the people of his division worked closely at the state government level with the Commerce Department's First Deputy Commissioner, Ronald B. Peterson, when the Bethlehem site was under consideration. Also involved in working out the site arrangements were Town of Bethlehem Supervisor, Bertram E. Kohinke, Town Attorney Arthur McCormack, and personnel of the GE Real Estate and Construction Operation. In connection with the project, Dr. Charles E. Reed, Vice-President and General Manager of General

# Reduced Today!

Starting today we have re-priced all our sale merchandise.

Now mostly 1/3 to 1/2 off

All sale dresses

All sale skirts

All sale blouses

Now 1/4 to 1/2 off

All sale slacks, shirts, shorts, T shirts, shifts, etc.



Summer Hours: Closed Mondays  
July and August ONLY  
Daily 10 a.m.  
Evg. Wed., Thurs., Fri.

Electric's Chemical & Metallurgical Division, called on Governor Rockefeller recently for an overall discussion of the economic outlook for the Empire State.

PPO was invented by Dr. Allan S. Hay in the General Electric Research Laboratory in Schenectady. A unique thermoplastic, it combines such characteristics as excellent performance over a very broad temperature range; outstanding resistance to steam and to water-based solutions of alkali and acids; excellent electrical properties.

Joining General Electric's phenolic molding compounds and LEXANR polycarbonate resin as competitors with metals and other engineering plastics, PPO is expected to gain major markets in hot water pipe, plumbing components, surgical instruments, appliance parts, and in

myriad applications in the electrical and electronic industries.

Development of world-wide markets for PPO through joint ventures with Dutch and Japanese chemical companies has already been announced by G.E. In Holland, a 60 per cent owned subsidiary, N.V. Polychemie AKU-GE, has been formed with Algemene Kunstzijde Unie NV. A 50/50 venture with Mitsui Petrochemical Industries, Ltd. is awaiting approval by the Japanese government.

The plant is designed around an entirely new manufacturing process known as oxidative coupling. When announced last December, Dr. C. Guy Suits, General Electric research director, said oxidative coupling is "the most exciting basic polymer invention since the discovery of linear polycondensation chemistry in the 1930's which made

Now You Can Own a  
**Whitehall KITCHEN**



Comes in 14 rich Natural Wood Finishes... and costs less than you think!

**whitehall**  
CUSTOM BUILT KITCHENS

CALL NOW for FREE PLANS & ESTIMATES HO 3-3211

**ALBANY BUILDING CENTER**  
INCORPORATED

352 Central Avenue, Albany 6, New York



# Helena Rubinstein Once-a-Year BEAUTY SALE

One To Buy...  
A Beauty Companion To Try!

**SAVE UP TO 44%**

**BUY THIS**

Deep Cleanser  
Beauty Washing Grains  
Nudit W/Super Finish  
Roll Dry Deodorant  
Perfume Spray Deodorant  
Heaven Sent Cream Deo.  
Apple Blossom Cream Deo.

**GET THIS FREE!**

any size Herbal Skin Lotion  
any size Water Lily Pore Lotion  
any size Heaven Sent Shaker Talc

your choice { Heaven Sent Eau de Parfum  
Apple Blossom Eau de Parfum

**BUY THIS**

Tintillate  
Silk Fashion Liquid Make-Up  
Coverfluid  
Heaven Sent Eau de Parfum Mist  
Eye Cream Special  
Long Lash Mascara

**GET THIS FREE!**

Special Cream Peroxide  
Silk Fashion Face Powder  
any size Silk Fashion Face Powder  
any size Heaven Sent Talc  
any size Herbal Extract - 2oz.  
Mascara Remover Oil

**L. J. MULLEN PHARMACY, Inc.**

M. C. Mullen, Prop. 256 Delaware Ave., Elmsere  
HE 9-2413 — PHONES — HE 9-5411

**OPEN EVENINGS 'TIL 9 P.M.**  
Closed Saturdays During  
July and August

**Always Spacious Parking**

**ANNUAL MID-SUMMER SALE**  
Save on Famous Brand  
Name Furniture During  
Our 17th ANNUAL MID-  
SUMMER SALE. Im-  
pressive Savings on  
Early American Furniture  
of Solid Maple, Pine,  
and Cherry.

**HOUSE of MAPLE  
Furniture...**

**LATHAM - Route 9**  
Just South of Corners  
**CONVENIENT BUDGET PLAN**

Shop in Air Conditioned Comfort  
EASY PARKING IN FRONT OF STORE

**SUMMER SALE**  
**SAVINGS FROM 10 to 40%**  
ON  
Handmade Imported Oriental Rugs  
Famous Name Broadloom Carpet  
Carpeting from India

**KERMANI ORIENTAL RUGS**  
**3905 STATE ST., SCHENECTADY**  
**EX 3-6884** Mon.-Fri. 10:00-5:30  
Tues. & Thurs. 'til 9  
Closed Sats. during July & Aug.  
terms available

**THIS VALUABLE COUPON WORTH**  
**100 BONUS TRIPLE-S BLUE STAMPS**  
with purchase amounting to \$3 or more at  
**Slingerlands Service Center**  
**1360 N. SCOTLAND ROAD, SLINGERLANDS**  
These extra Blue Stamps are in addition to those you re-  
ceive regularly with your purchase. **COUPON EXPIRES**  
**JULY 29 1965. LIMIT ONE COUPON TO A FAMILY.**

possible nylon and other polymers . . . this basically new polymerization process hastens the day when countless common products will be made of plastic materials specifically tailored to the particular job."

The Chemical Development Operation is part of General Electric's Chemical & Metallurgical Division which has two of its major components in the Capital District — the Insulating Materials Department at Schenectady, and the Silicone Products Department at Waterford.

Other CHEMET Division components include the Chemical Materials Department with plants in Pittsfield, Massachusetts and Mt. Vernon, Indiana; Laminated Products Department, Coshoc-ton, Ohio; Metallurgical Products Department with several facilities in Michigan; and the X-Ray Department headquartered in Milwaukee, Wisconsin.

#### Town to Move Several Depts.

Supervisor Bertram E. Kohinke recently made the following announcement:

The Town of Bethlehem plans to move several departments from the century-old Town Hall, 393 Delaware Avenue, to the recently-acquired buildings at 100 and 110 Adams Street nearby. The move is not expected to be made until the end of the year.

Law enforcement services will be centralized in one of the Adams Street buildings. These include Police, Juvenile Bureau, Peace Justice Court and chambers. In addition, offices of the

Water and Sewer Departments, Civil Defense and the Town Historian may be moved to Adams Street.

A major portion of the two buildings will continue to be used as a headquarters for highway workers in the northern end of the Town, and for the storage of highway, election and other Town equipment. The Town has been renting space in the same structures for these purposes.

The changes are necessitated by the growth of the Town and the continuing demands for the services available. It is essential that working space be added.



Semi-Annual

*Clearance*

on

*Spring and*

*Summer*

*Men's Apparel*

*Suits, Sportcoats,*

*Trousers*

also

*Sportswear,*

*Furnishings, Hats*

**20% off**

*Stulmaker's*  
8 James Street  
Just off State  
Open Thursday to 9  
Member Park'n'Shop

Closed  
Saturdays July and August



Get Over **1350** EXTRA BONUS STAMPS

with these coupons

**FREE 100 extra bonus STAMPS**

WITH THIS COUPON AND THE PURCHASE OF ONE 2 LB. PKG. ANY BRAND **COFFEE**

Redeemable at your friendly... GRAND UNION or

Coupon good thru Saturday, July 24 Code G

LIMIT ONE COUPON PER CUSTOMER

**FREE 100 extra bonus STAMPS**

WITH THIS COUPON AND THE PURCHASE OF ONE 20 QT. PKG. GRAND UNION **DRY MILK**

Redeemable at your friendly... GRAND UNION

Coupon good thru Saturday, July 24 Code G

LIMIT ONE COUPON PER CUSTOMER

**FREE 100 extra bonus STAMPS**

WITH THIS COUPON AND THE PURCHASE OF FOUR 151 OZ. CANS FRANCO AMERICAN **SPAGHETTI** AND **MEATBALLS**

Redeemable at your friendly... GRAND UNION

Coupon good thru Saturday, July 24 Code G

LIMIT ONE COUPON PER CUSTOMER

**FREE 100 extra bonus STAMPS**

WITH THIS COUPON AND THE PURCHASE OF FOUR 1 LB. PKGS. GRAND UNION **FRUIT COCKTAIL**

Redeemable at your friendly... GRAND UNION

Coupon good thru Saturday, July 24 Code G

LIMIT ONE COUPON PER CUSTOMER

**FREE 100 extra bonus STAMPS**

WITH THIS COUPON AND THE PURCHASE OF FOUR 1 LB. PKGS. ALL VARIETIES **LEWIS CANDIES**

Redeemable at your friendly... GRAND UNION

Coupon good thru Saturday, July 24 Code G

LIMIT ONE COUPON PER CUSTOMER

**FREE 100 extra bonus STAMPS**

WITH THIS COUPON AND THE PURCHASE OF TWO 1 LB. 3 OZ. JARS GRAND UNION **BARBECUE SAUCE**

Redeemable at your friendly... GRAND UNION

Coupon good thru Saturday, July 24 Code G

LIMIT ONE COUPON PER CUSTOMER

**FREE 100 extra bonus STAMPS**

WITH THIS COUPON AND THE PURCHASE OF ONE FAMILY SIZE TUBE **COLGATE TOOTHPASTE**

Redeemable at your friendly... GRAND UNION

Coupon good thru Saturday, July 24 Code G

LIMIT ONE COUPON PER CUSTOMER

**FREE 100 extra bonus STAMPS**

WITH THIS COUPON AND THE PURCHASE OF ONE ANY SIZE PRESSURE CAN (7 oz. or 4 oz.) **SECRET DEODORANT**

Redeemable at your friendly... GRAND UNION

Coupon good thru Saturday, July 24 Code N-F

LIMIT ONE COUPON PER CUSTOMER

**FREE 50 extra bonus STAMPS**

WITH THIS COUPON AND THE PURCHASE OF ONE GIANT SIZE PKG. OF ANY BRAND **DETERGENT**

Redeemable at your friendly... GRAND UNION

Coupon good thru Saturday, July 24 Code G

LIMIT ONE COUPON PER CUSTOMER

**FREE 50 extra bonus STAMPS**

WITH THIS COUPON AND THE PURCHASE OF ONE PKG. OF 44 (16 FREE) **SALADA TEA BAGS**

Redeemable at your friendly... GRAND UNION

Coupon good thru Saturday, July 24 Code G

LIMIT ONE COUPON PER CUSTOMER

**FREE 50 extra bonus STAMPS**

WITH THIS COUPON AND THE PURCHASE OF ONE 4 OZ. BOT. **SUCARYL LIQUID SWEETENER**

Redeemable at your friendly... GRAND UNION

Coupon good thru Saturday, July 24 Code G

LIMIT ONE COUPON PER CUSTOMER

**FREE 50 extra bonus STAMPS**

WITH THIS COUPON AND THE PURCHASE OF ONE HALF GAL. BOT. GRAND UNION **FABRIC SOFTENER**

Redeemable at your friendly... GRAND UNION

Coupon good thru Saturday, July 24 Code G

LIMIT ONE COUPON PER CUSTOMER

**FREE 50 extra bonus STAMPS**

WITH THIS COUPON AND THE PURCHASE OF ONE 1 LB. 10 OZ. PKG. SNOWY **POWDERED BLEACH**

Redeemable at your friendly... GRAND UNION

Coupon good thru Saturday, July 24 Code G

LIMIT ONE COUPON PER CUSTOMER

**FREE 50 extra bonus STAMPS**

WITH THIS COUPON AND THE PURCHASE OF TWO 1 LB. 4 OZ. JARS MOTTI ALL VARIETIES **FRUIT TREATS**

Redeemable at your friendly... GRAND UNION

Coupon good thru Saturday, July 24 Code G

LIMIT ONE COUPON PER CUSTOMER

**FREE 50 extra bonus STAMPS**

WITH THIS COUPON AND THE PURCHASE OF TWO 1 LB. 13 OZ. CANS **PEARS**

Redeemable at your friendly... GRAND UNION

Coupon good thru Saturday, July 24 Code G

LIMIT ONE COUPON PER CUSTOMER

**FREE 50 extra bonus STAMPS**

WITH THIS COUPON AND THE PURCHASE OF TWO 1 QT. 14 OZ. CANS DEL MONTE **PINEAPPLE JUICE**

Redeemable at your friendly... GRAND UNION

Coupon good thru Saturday, July 24 Code G

LIMIT ONE COUPON PER CUSTOMER

**FREE 50 extra bonus STAMPS**

WITH THIS COUPON AND THE PURCHASE OF FOUR 4 OZ. CANS OF MINUTE MAID FROZEN **LEMONADE**

Redeemable at your friendly... GRAND UNION

Coupon good thru Saturday, July 24 Code G

LIMIT ONE COUPON PER CUSTOMER

**FREE 50 extra bonus STAMPS**

WITH THIS COUPON AND THE PURCHASE OF FOUR 4 OZ. CANS OF MINUTE MAID FROZEN **LIMEADE**

Redeemable at your friendly... GRAND UNION

Coupon good thru Saturday, July 24 Code G

LIMIT ONE COUPON PER CUSTOMER

**FREE 50 extra bonus STAMPS**

WITH THIS COUPON AND THE PURCHASE OF FOUR 4 OZ. CANS OF MINUTE MAID FROZEN **ORANGEADE**

Redeemable at your friendly... GRAND UNION

Coupon good thru Saturday, July 24 Code G

LIMIT ONE COUPON PER CUSTOMER

SWIFT'S PREMIUM **BUTTERBALL** BELTSVILLE MIDGET TURKEYS

5 to 9 lbs. Avg. Wgt.

**43¢** lb

COLONIAL BRAND-READY TO EAT

**CANNED PICNICS**

**5 lb \$2.99** BONELESS SIZE

U.S.D.A. CHOICE--BLADE CUT

**CHUCK ROAST**

**lb 49¢**

U. S. CHOICE BONELESS

**CROSS RIB ROAST**

**49¢** lb. FRESH LONG ISLAND DUCKS WRAPPED  
**69¢** lb. COLONIAL BRAND SKINLESS FRANKS & BACON

OVEN OR POT ROAST

**99¢** lb.

COLONIAL BRAND POLISH

**89¢** lb. KEILBASI

PLUMP-JUICY SKINLESS

**99¢** 2 lb. Bag FRANKS

CALIF. PINK MEATED **CANTALOUPE** **3 for 99¢**

CALIF. RIPE LUSCIOUS

**NECTARINES 2 lb 49¢**

CARNATION LIGHT **TUNA FISH**

GRAND UNION

**APRICOT ORANGE DRINK**

GRAND UNION

**PINEAPPLE ORANGE DRINK**

KRAFT

**PRESERVES**

GRAND UNION

**PEANUT BUTTER**

CHUNK STYLE

**3 6 oz. 89¢**

**3 1 Qt. \$1.00**

**3 14 oz. 1.00**

**3 1 Qt. \$1.00**

**3 14 oz. 1.00**

**3 1-lb. 59¢**

**3 2 oz. 59¢**

**3 1-lb. 59¢**

**3 8 oz. 59¢**

**3 8 oz. 59¢**

**Frozen Foods**

**FLOUNDER DINNER**

GRAND UNION

**10 oz. 49¢**

**SWORDFISH DINNER**

GRAND UNION

**10 oz. 49¢**

**BABY LIMAS**

IN BUTTER SAUCE GRAND UNION

**2 10 oz. 59¢**

**BROCCOLI SPEARS**

IN BUTTER SAUCE GRAND UNION

**2 10 oz. 59¢**

**GOLDEN TATERS**

GRAND UNION

**4 1-lb. \$1.00**

**STRAWBERRIES**

SLICED GRAND UNION

**4 10 oz. \$1.00**

WE RESERVE THE RIGHT TO LIMIT QUANTITIES  
WE ARE NOT RESPONSIBLE FOR TYPOGRAPHICAL ERRORS

PRICES AND OFFERS EFFECTIVE  
THURS., FRI., SAT. JULY 22, 23, 24

**SAVE CASH AND STAMPS**



# Freikofer's

## BATTER WHIPPED SUNBEAM BREAD

COMPARE . . . and see the difference!  
 Batter Whipped! No Holes! No Streaks!  
 Delicious Bread, Rolls & Cake!  
 DAILY HOME DELIVERY  
 Phone HO 3-2221

## FEATURE OF THE WEEK — AVAILABLE EVERY DAY

Have you tried the new "Dutch Treat?"

DUTCH LOAF . . . . . 30¢

The new exciting taste in white bread — made with milk, honey and pure vegetable shortening. Look for the little Dutch girl on the clean white wrapper from your routeman or at your favorite store.

## THURSDAY

July 22

- |   |  |
|---|--|
| <input type="checkbox"/> STRAWBERRY RHUBARB PIE . . . . . 69¢ | <input type="checkbox"/> LEMON SHERBET LAYER 65¢         |
| <input type="checkbox"/> Bobka . . . . . 59¢                  | <input type="checkbox"/> Blueberry Muffins . . . . . 39¢ |
| <input type="checkbox"/> Chocolate Fudge Cups . . . . . 39¢   | <input type="checkbox"/> Brownies . . . . . 69¢          |
| <input type="checkbox"/> ● Sunbeam Bread . . . . . 26¢        | <input type="checkbox"/> ● English Muffins . . . . . 29¢ |

## NEW—FROM THE OVENS OF FREIHOFFER!

Hermits (Monday and Friday) . . . . . 39¢

New arrival of an old favorite!

## FRIDAY

July 23

- |  |   |
|--|---|
| <input type="checkbox"/> BLUEBERRY PIE . . . . . 69¢     | <input type="checkbox"/> CHOCOLATE LAYER . . . . . 59¢        |
| <input type="checkbox"/> Pecan Coffee Ring . . . . . 49¢ | <input type="checkbox"/> Pineapple Bran Muffins . . . . . 39¢ |
| <input type="checkbox"/> Pink Coconut Cups . . . . . 39¢ | <input type="checkbox"/> Date Nut Loaf . . . . . 49¢          |
| <input type="checkbox"/> ● King Size Bread . . . . . 31¢ | <input type="checkbox"/> ● Butter Parkerhouse Rolls 39¢       |

## NEW—FROM THE OVENS OF FREIHOFFER!

Peanut Butter Chips (Every Saturday) . . . . . 59¢

Rich butter cookies with tasty peanut butter chips.

## SATURDAY

July 24

- |  |  |
|--|--|
| <input type="checkbox"/> LEMON MERINGUE PIE 69¢              | <input type="checkbox"/> DIXIE PRIDE . . . . . 79¢         |
| <input type="checkbox"/> Family Coffee Cake . . . . . 98¢    | <input type="checkbox"/> Fruit Cookies . . . . . 39¢       |
| <input type="checkbox"/> Dunketts . . . . . 32¢              | <input type="checkbox"/> ● Hot Dog Rolls (8) . . . . . 29¢ |
| <input type="checkbox"/> ● Old Fashioned Bread . . . . . 29¢ | <input type="checkbox"/> ● Hamburg Rolls (8) . . . . . 29¢ |

## NEW—FROM THE OVENS OF FREIHOFFER!

Blueberry Toasties (Every Friday) . . . . . 39¢

Round toaster size delicacies . . . lots of blueberries!

## MONDAY

July 26

- |   |   |
|---|---|
| <input type="checkbox"/> PEACH PIE . . . . . 69¢          | <input type="checkbox"/> CORN TOASTIES . . . . . 33¢        |
| <input type="checkbox"/> Cinnamon Curl Buns . . . . . 36¢ | <input type="checkbox"/> Chocolate Sheet Cake . . . . . 59¢ |
| <input type="checkbox"/> Chocolate Chips . . . . . 59¢    | <input type="checkbox"/> Cinnamon Crumb Cakes . . . . . 44¢ |
| <input type="checkbox"/> ● Buffet Rye . . . . . 29¢       | <input type="checkbox"/> ● Hard Seed Rolls . . . . . 29¢    |

## NEW—FROM THE OVENS OF FREIHOFFER!

Whole Wheat Muffins (Every Monday) . . . . . 39¢

A delicious jelly filling . . . you like 'em!

## TUESDAY

July 27

- |  |   |
|--|---|
| <input type="checkbox"/> CHERRY PIE . . . . . 69¢            | <input type="checkbox"/> VALENCIA RING . . . . . 65¢      |
| <input type="checkbox"/> Peanut Butter Cookies . . . . . 39¢ | <input type="checkbox"/> Streussel Buns . . . . . 39¢     |
| <input type="checkbox"/> Assorted Cup Cakes . . . . . 39¢    | <input type="checkbox"/> Banana Muffins . . . . . 39¢     |
| <input type="checkbox"/> ● Split-Top Italian . . . . . 27¢   | <input type="checkbox"/> ● Cloverleaf Rolls . . . . . 35¢ |

Freikofer's

● Indicates items available every day. The above is not a complete list of available items. For further information ask your Routeman or call the Bakery.

WATCH "FREDDIE FREIHOFFER"  
 WRGB WEEKDAYS 4:45 - 5:00



The Town Hall will continue to be the main location of public services. Remaining will be the Town Clerk, the Receiver of Taxes, the Assessor, the Building Inspector, the Comptroller, and the Supervisor. Meetings and hearings of the Town Board will continue to be held in the Town Hall.

The brick and concrete block structures were purchased by the Town for \$99,000, after approval by a vote of the people last January. Prior to this, two independently-conducted appraisals listed the value at \$103,920 and \$105,000. The building at 100 Adams Street was erected in 1953 and an addition on the rear was constructed in 1956. The building at 110 Adams Street was built in 1954. The combined facilities provide 15,964 square feet of space. Parking facilities have been provided close by.

The purchase is being financed through the sale of bonds at approximately 3.5% interest over 20 years. The per-taxpayer cost is about five cents per \$1,000 assessed valuation. The total 20-year cost, including principal and interest, will amount to \$135,750. But the Town has been paying rent for use of a part of the buildings of \$6,220 per year, which in 20 years would amount to \$124,400.

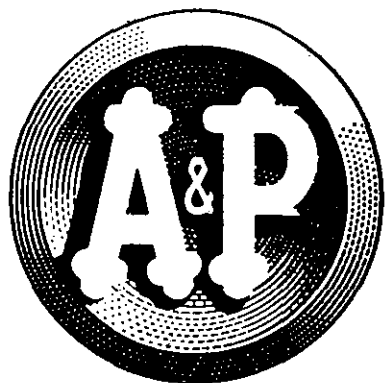
The structures will, of course, be removed from the tax rolls. It is estimated the Town tax loss for 20 years would amount to \$28,500 and the school tax to \$32,500, for a total tax loss of \$61,000.

The gains offset these figures. The cost of rental of the additional storage and office space in these buildings over the 20-year period has been estimated at \$109,000 or more. The present tenant of one of the buildings, L & H Garage, is relocating on Adams Street, creating a new taxable property. In the long run, the total advantage for the Town amounts to more than \$50,000, and the Town will, of course, own the buildings and the excellent property on which they are located.

SUBSCRIBE TO

THE SPOTLIGHT

## DOUBLE PLAID STAMPS WEDNESDAY



NOT JUST A  
FEW, BUT  
SAVINGS ON  
**MANY  
BEEF  
ITEMS**

**GOOD REASONS  
TO SHOP A&P!**

- ★ Good Values ...
- ★ Good Selection ...
- ★ Good Service!



SOMETHING ELSE YOU'LL LIKE!  
THOSE...

**Good Gifts for  
PLAID STAMPS**

**Special Offer!**

Beautiful

**CURRIER & IVES  
DECORATED CANISTERS**

Without Cost When You Purchase



**100 OUR OWN  
TEA BAGS** BOTH ONLY **99¢**

Four different full color  
lithographed reproductions of rare Currier &  
Ives prints!

# BEEF SALE!

## STEAKS ROASTS

SUPER-RIGHT QUALITY **SAVE UP TO 30¢**  
**SIRLOIN STEAK** LB **99¢**  
SUPER-RIGHT STEAK **SAVE UP TO 30¢**  
**PORTERHOUSE** LB **1.09**  
SUPER-RIGHT **SAVE UP TO 20¢**  
**CHUCK STEAK** BONE IN LB **59¢**  
Boneless Shoulder Steak **SAVE UP TO 26¢**  
**LONDON BROIL** LB **99¢**  
FROM CHUCK **SAVE UP TO 14¢**  
**CALIFORNIA STEAK** LB **75¢**  
SUPER-RIGHT, BONE IN **SAVE UP TO 20¢**  
**RIB STEAK** LB **89¢**  
SUPER-RIGHT QUALITY **SAVE UP TO 4¢**  
**FLANK STEAK** LB **95¢**

**Ground Chuck** SUPER-RIGHT LB **75¢**  
**Stewing Beef** SUPER-RIGHT LB **75¢**  
**Plate Beef** SUPER-RIGHT LB **29¢**  
**Braciola** THIN SLICED TOP ROUND LB **1.29**  
**Chuck Steak** BONELESS LB **83¢**  
**Braising Beef** FROM CHUCK LB **85¢**  
**Top Sirloin** BONELESS ROAST LB **1.19**  
**Ground Beef** 3 LBS OR MORE LB **59¢**  
LESSER QUANTITIES lb 61¢

SUPER-RIGHT QUALITY **SAVE UP TO 14¢**  
**CHUCK ROAST** BONE IN LB **55¢**  
SUPER-RIGHT **SAVE UP TO 24¢**  
**BLADE CUT** CHUCK ROAST LB **55¢**  
SUPER-RIGHT FROM CHUCK **SAVE UP TO 14¢**  
**CALIF ROAST** LB **65¢**  
SUPER-RIGHT QUALITY **SAVE UP TO 16¢**  
**POT ROAST** BONELESS CHUCK LB **73¢**  
Boneless Shoulder **SAVE UP TO 20¢**  
**OVEN ROAST** LB **95¢**  
3RD TO 6TH RIB **SAVE UP TO 20¢**  
**RIB ROAST** LB **79¢**  
Straight Cut lb 95¢ **SAVE UP TO 14¢**  
**FRESH BRISKET** Front Cut LB **75¢**  
TOP OR BOTTOM **SAVE UP TO 20¢**  
**ROUND ROAST** LB **1.09**

**Swordfish** FRESH— LB **85¢**  
Center Slices lb 95¢  
**Salmon** FANCY SLICED SILVER BRIGHT LB **65¢**  
**Frankforts** Super-Right 5 lb Skinless box **2.69**  
**Bologna** SUPER-RIGHT 1 LB SLICED PKG **69¢**

U.S.D.A. INSPECTED  
**Roasting Chickens**

FANCY  
5 to 6 LB AVG. LB **55¢**

**THE PICK OF THE CROP**  
LARGE PLUMP CULTIVATED

**Blueberries**

3 PINT BASKETS **\$1**

LARGE FLAVORFUL

**Peaches**

Southern

4 LBS **55¢**

PLUMS

WATERMELONS

SWEET CORN

CALIFORNIA, SWEET

RED RIPE, CUTTING

FRESH NATIVE

10 FOR **29¢**

EACH **89¢**

10 EARS **49¢**

**LEMON DAYS****TAD'S****SUMMER CLEARANCE**

**YOUR PICK OF THE CROP**  
*Summer Suits, Coats, Slacks,  
 Sport Shirts, Knit Shirts, Swim  
 Wear, Walk Shorts*

**FROM 20%**

*Boy's Summer Sport Coats,  
 Short Sleeve Shirts, Knits,  
 Swim Wear, Walk Shorts*

**ALL OUR REGULAR  
 STOCK REDUCED**

**Tads**

**four corner shop**  
 men boys

**FOUR CORNERS****DELMAR****Engagement**

The engagement of Janet Karen Johnson, daughter of Mrs. Edna Johnson and the late Gerald Johnson of Sagamore Drive, Rochester, to William Keith Leonard, son of Mr. and Mrs. Irving



Janet Karen Johnson  
 R. Leonard, 1 Leonard Place, Elsmere, was announced at a recent family gathering in Rochester.

Miss Johnson graduated in June from State University at Potsdam, N.Y. She will be teaching first grade in Massena this Fall.

Mr. Leonard graduated from Bethlehem Central High School in 1960.

He received his B.Ch.E. Degree at Clarkson College of Technology where he is currently studying for his Ph.D. in Chemical Engineering.

No date has been set for the wedding.

\*\*\*

Subscribe to The Spotlight

**Recent Grad**

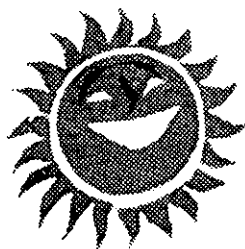
Jeremiah F. Manning, son of Mr. & Mrs. Anthony J. Manning, Sr., of 46 Douglas Road, Delmar, recently graduated from Albany Law School. He did his undergraduate work at St. Bernadine of Siena College, Loudonville, obtaining a B.A. degree, major in English, and a B.B.A. degree major in accounting in 1962. While at Siena, he was elected president of the Student Senate, and selected to be named to Who's Who in American Colleges and Universities.

During law school, Mr. Manning was a class officer in his respective classes, president of the Student Bar Association, and represented Albany Law School



Jeremiah Manning  
 at the American Law Students' Annual meeting, a meeting held in conjunction with the American Bar Association's Annual meeting.

Mr. Manning will commence



*Sizzling Weather  
 means a Sizzling,  
 Low, Low  
 Price on*



**11" PORTABLE TV**

All channel, UHF & VHF, with earphone and carrying handle, 90-day free service, no Excise Tax.

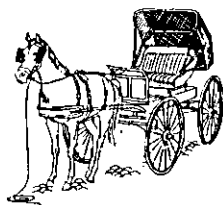
Beat the Sales Tax!

ONLY

**\$88.88**

**the Carriage Stop**

339 Delaware Avenue, Delmar, New York  
*Where You Buy With Confidence*



**CLEARANCE**  
 odds & ends of toys

**1/2 OFF**

**TOY  
 FAIR**

DELAWARE PLAZA

HE 9-5539





Dining is always a magnificent  
adventure at the beautiful

# Zwicklbauer's HOFBRAU ON SCENIC WARNER LAKE

"The Showplace of the Helderbergs"

Route 157-A

Telephone 872-9912

EAST BERNE, N.Y.

## SPECIAL BAVARIAN NIGHT

SATURDAY, JULY 24

(Indoor and Outdoor Affair - weather permitting)

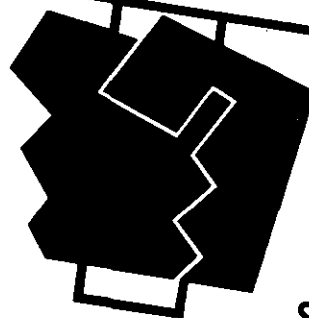
## SPECIAL BAVARIAN MENU

featured for the event

featuring the Bavarian Barons  
for your Dancing Pleasure

# BEAT THE SALES TAX!

# BUY NOW!



SPECIAL PRICES  
ON OUR OWN  
PRIVATE LABELS

CASE LOTS AT  
SPECIAL DISCOUNTS

## FOWLER'S LIQUOR STORE

SEE ERNIE AND GEORGE FOR BETTER SPIRITS WE DELIVER  
ELSMERE-AT-THE-LIGHT PHONE HE 9-2613

Get the "BIG 3" in Food Here!

**QUALITY! LOW PRICES! SERVICE!**

**Star**  
SUPER MARKETS  
WE SERVE YOU BETTER  
WE SAVE YOU MORE

406 Kenwood Avenue  
Four Corners, Delmar

U.S. CHOICE STANDING RIB ROAST OF

# BEEF

FRYING OR BROILING

# CHICKENS

LB. whole

# 29



cut-up, split, or  
quartered

# 33¢



1st 2 cuts of the rib

LB. **79¢**

# Potatoes

U. S. NO. 1 NEW

**1079¢**  
lbs.

# Wesson Oil

Pint  
Bottle

# 25¢



# Crisco

3 lb. can

# 69¢

# Miss Lou

Reg. 4½  
oz. can

# Shrimp 45¢

# Hi C Fruit

# Drink 46 oz. 25¢

can

**CLARK CARPET CO.**

52 SHERIDAN AVE.  
ALBANY

**DURING THIS SALE ONLY**

**OPEN** Thursday 'Til 9 P. M.  
Friday

**\$75,000<sup>00</sup>**

**SURPLUS STOCK**

**LIQUIDATION SALE**

WE HAVE HUNDREDS OF ITEMS  
SPACE DOES NOT PERMIT LISTING  
HERE — AND IT'S ALL ON SALE

**WE HAVE MANY THOUSANDS OF DOLLARS WORTH OF OVERSTOCKS-WE MUST SELL AND RIGHT NOW-GIVING YOU THE PUBLIC THOUSANDS IN SAVINGS!**

**VINYL INLAID**

FROM **97¢** SQ. YD.

**Linoleum**

TO **4.97** SQ. YD.

VALUES 2.95 TO 8.95 SQ. YD.

Ass'td patterns & colors, quantities limited to present stock. Reg. selling price was \$2.95 sq. yd.

6 FT. & 9 FT. WDT

**VINYL**

**LINOLEUM**

**\$1.77**

SQ. YARD

With cushion built-in. Reg. selling \$2.79 sq. yd.

**LARGE SELECTION DISCONTINUED PATTERNS VINYL ASBESTOS**

**TILE 11 <sup>1</sup>/<sub>2</sub>¢**

TILE

Good quantities, best colors & patterns. Mix or match as you prefer. 1/8" thick.

**SOLID VINYL**

**TILE 15¢**

PER TILE

Variety of colors & patterns. Reg. suggested selling price 29¢ per tile.

**BEAUTIFUL ASSORTED COLORS LOOP PILE-12 FT. WIDE**

**WOOL CARPET 7<sup>88</sup>**

sq. yd.

Latex back, excellent quality. Reg. priced 10.95 TO 17.95 SQ. YD.

**SOLID BEIGE-100%**

**WOOL CARPET 6<sup>88</sup>**

sq. yd.

Finest quality. Reg. priced at \$13.95.

**BEIGE OR GREEN TWEED**

**WOOL BLEND CARPET 4<sup>88</sup>**

sq. yd.

Reg. priced TO \$8.95.

**REMNANT LENGTHS & CARPETS SAVINGS TO 50%**

**Clark Carpet Co.**

HO 5-3418

52 SHERIDAN AVENUE, ALBANY

HYLON & ACRYLON PILE

**CARPET 5<sup>88</sup>**

sq. yd.

REG. TO 16.95 A YARD

study in August at the University of Michigan. Graduate School of Business, where he has been given Advance Standing leading to a Masters of Business Administration, major in Accounting.

**June Grad**

Miss Joanne Van Wormer, daughter of Mr. and Mrs. Edmund



Joanne Van Wormer

Van Wormer of 19 Groesbeck Place, Elmsere, who attended Ithaca College, received her

**Garden Shoppe**

Feura Bush Road  
Glenmont, N.Y. HE 9-1835

**WATER SHORTAGE!**

**Mr. Homeowner:**

The amount of water you can apply to your lawn and garden depends on the inside diameter of your hose and the type of hose nozzle you are using.

Be sure you get the maximum result from your few hours watering time allowed under the water conservation plan.

See or call us for advice

During July and August the **GARDEN SHOPPE** will be closed on Sunday

Open Daily 8:00 A.M. to 8:30 P.M.

Open Saturday 8:00 A.M. to 6:00 P.M.

THE SPOTLIGHT

B.A. degree from the State University of New York at Albany this June.

While at the University, Miss Van Wormer was active in Womens' Chorus, Mixed Choir, the State College Revue, and is a member of Sigma Alpha Sorority.

She was graduated from Bethlehem Central High School in 1960.

Joanne will be leaving the middle of August for Texarkana, Texas, where she had accepted a management trainee position at a Army Depot in Texarkana.

Officers Elected

At a recent meeting of the Capitol District Alumnae Chapter, College of Mt. St. Vincent, the following officers were elected for the coming year: President, Miss Marion E. Martin, 110 Fernbank Ave., Delmar; Vice President, Mrs. Vincent G. Burns, 9A Old Hickory Drive, Loudonville; Treasurer, Mrs. Frederick H. Stutzman, 226 Euclid Ave., Albany; Secretary, Miss Donna Montesano, 106 Terrace Ave., Albany.

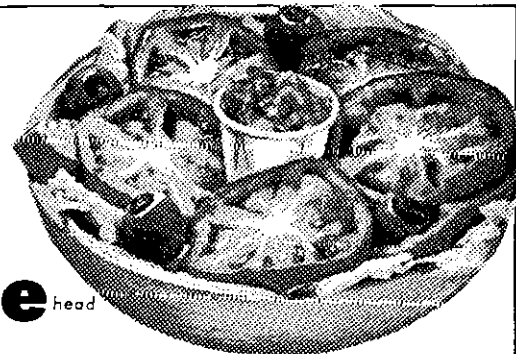
Honors Winner

Miss Doris Szypulski, daughter of Mr. and Mrs. Stanley Szypulski



Doris Szypulski of New Scotland Rd., Slingerlands, received her B.A. degree in teaching and a trophy from the Zeta Zeta Chapter of Kappa Delta Pi for maintaining the highest scholastic average of 3.83 in four years of study at the State University at New Paltz. She is a member of Nu Pi Sigma, Mu

Cool Summer Salads



ICEBERG

Lettuce head

Radishes pkg.

Cucumbers

Tomatoes CELLO pkg.

Scallions bunch

ALL FOR 89¢



TABLERITE MEAT

STEAK



FULL CUT (LONG ROUNDS)

Sirloin lb. 89¢ Round lb. 99¢

Franks lb. 59¢ Bologna lb. 59¢

DAIRY FOODS

KRAFT DELUXE WHITE AMERICAN

Cheese

(SLICES) 3 for \$1

8 oz.

IGA MEDIUM WHITE

EGGS

2 doz. 69¢

"COLD CASH" SAVINGS FROZEN FOODS

CHEF BOYARDEE WITH CHEESE

Pizza 39¢

BONDWARE WHITE (9")

Paper Plates

40 ct. 45¢

DEL MONTE

Peas

303 19¢

Oxydol

giant 69¢

FULL QUART

IGA Soda

NO DEPOSIT BOTTLE

5 for \$1

FREE CHINAWARE

Finest Quality - Here Now - ASK US FOR DETAILS -



SLINGERLANDS MARKET

1526 N. Scotland Rd., (next to Fire House)

Slingerlands, New York

NEW STORE HOURS: Mon. - Sat. 7 a.m.-11 p.m.

Sundays 9 a.m. - 9 p.m.

Prices Effective Thursday, Friday, Saturday, (7/22, 7/23, 7/24)

C. L. SUMMER & CO.

ANNUAL

MID-SUMMER Sale

SUITS

Both Tropical and All-Year Weight

SPORT COATS

SLACKS

BERMUDA SHORTS

JACKETS

ROBES

PAJAMAS

STRAW HATS

NECKWEAR

SPORT SHIRTS

at SUBSTANTIAL SAVINGS!

C. L. Summer & Co., Inc.

462 Broadway, Albany, N. Y.

Entire Store Air Conditioned

Free Park and Shop Tickets

PARK & SHOP LOT, ONE BLOCK NORTH OF STORE

Open Thursdays 'til 9 P.M. - Closed Saturdays July and August

**TOMATOES****HOME GROWN****HOME  
GROWN****CORN****LeVie's Farm Market**

MAPLE ROAD, VOORHEESVILLE

RO 5-2208

RO 5-2208

**General Insurance****Time Payments****Surety Bonds****Frank G. Coburn, Inc.**

283 Washington Ave.

Albany, N.Y.

Phone Albany HO 3-4277 - 8-9

Sigma Epsilon and was treasurer of the Geological Society.

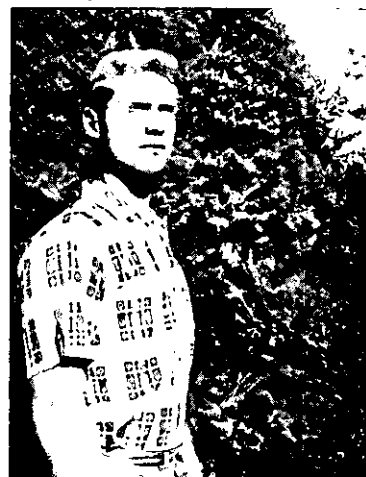
She is entering Rochester University in September to earn her masters degree in earth sciences.

**John Manne Wins Athletics****Honors in College**

John Manne has just completed his third year at Hartwick College, and has compiled a record of versatility hard to match. While at B.C.H.S., John was the undefeated Captain of an undefeated BCHS Tennis Team. As a freshman at Hartwick, he immediately displayed the tennis superiority that won him the #1 Singles spot on the Varsity Team. He was elected Captain in his Sophomore year and awarded the trophy as Outstanding Player. In the Junior year, he repeated

— re-elected Captain and again awarded the trophy as Outstanding Player. John also filled a Half-back position on the Hartwick Soccer Team, which won the N.Y. State Championship.

Added to his athletic achievements, John was elected to Beta Beta Beta, the National Biology Scholastic Honor Society. He also was Photographic Editor of *Hilltop*, his college paper. **AND SUMMERS??** For the past three years he has been water



John Manne

skiing instructor at a boys' camp on Schroon Lake. He holds a N.Y. State license as Junior Pilot and Engineer, qualified to operate 10-ton craft on N.Y. waters, and is a Senior Red Cross Lifesaver.

This September John will attend Fairleigh Dickinson University School of Dentistry, having been accepted after only three years of "Predental." He will now seek to add a successful career in dentistry to his undergraduate achievements.

**Movies Today**

Walt Disney's famous film, **BEAVER VALLEY**, and **PRE-HISTORIC IMAGES: THE FIRST ART OF MAN**, a movie about Stone Age cave paintings, will be the third offerings in the New York State Museum's Summer Film Festival. Both films will be shown on Thursday, July 22 at 12 noon and 3 p.m. at the Museum in the Education Building across the street from the Capitol in Albany. There is no charge.

\*\*\*

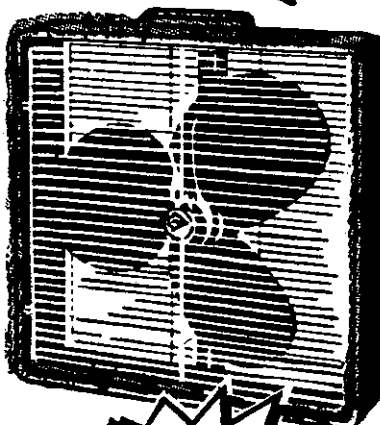
Subscribe to The Spotlight

**PROVEN 20-INCH  
PORTABLE ELECTRIC  
WINDOW FAN**

by Lasko

**DISCOUNT  
PRICE 16<sup>99</sup>**

Rotary 2 speed fan moves up to 5100 CFM. Motor never needs oiling. Grilles on both sides of fan protect children. Easy carrying handle. U.L. Approved.

**LIST PRICE \$24.97**

**July  
SALE**



at **DELMAR LUMBER  
& BUILDERS SUPPLY inc**

340 DELAWARE Ave • Phone HE.9-9968

*The nicest place for your children this summer . . .*

# TALL TIMBER DAY CAMP

Located on Route 85-A  
between Slingerlands  
and Voorheesville. Tall  
Timber offers a natural  
haven for children ages  
4-14.

**TWO 2 WEEK SESSIONS STILL AVAILABLE**

**JULY 26 - AUGUST 6**

**AUGUST 9 - AUGUST 20**

**COST!**

**1 SESSION - 2 WEEKS - \$55**

**2 SESSIONS - 4 WEEKS - \$100**

**COST INCLUDES:**

FREE transportation along our established bus routes.

FREE towels — a clean towel provided to each camper daily.

FREE milk and "canteen treat" for each camper daily. Campers may buy hot dogs or hamburgs at canteen or bring box lunch.

Also included in cost, all arts & crafts supplies and camper insurance.



GENUINE, NATIVE CALVES'

**LIVER**  
LB. **89¢**

Ideal for barbecuing, roasting,  
stewing or frying

**CAPONS**  
lb. **35¢**

BIRDSEYE, FROZEN

**Awake** 2 4½ oz. cans **25¢**

BETTY CROCKER, Vanilla, Choc., Devil's Food, Lemon

**Cake Mixes** pkg. **25¢**

HUNT'S

15½ oz. can

**Pork & Beans** **10¢**

**Joy** DOG FOOD 5 lb. bag **45¢**

DOVE, PRINT

**Facial Tissue** pkg. **19¢**

**PRODUCE SPECIALS**

NEW VIRGINIA

**Potatoes** 10 lb. bag **89¢**

HOME GROWN

**Tomatoes** 2 lbs. **39¢**

LONG ISLAND,  
LITTLE NECKS

**CLAMS**  
**\$1.47**  
3 doz.

WILSON'S CERTIFIED, VAC  
PACKED  
**BACON** EXTRA  
LEAN  
(CUT FROM  
SKINNY  
PIGS) lb. **89¢**  
pkg.

**FREEZER BUYS**

U.S.D.A. CHOICE

**Hindquarters** lb. **67¢**

**Sides of Beef** lb. **58¢** **Chucks of Beef** lb. **49¢**

**FOREQUARTER** lb. **49¢**

Reserve right to limit quantities - Prices effective Thurs., Fri., Sat. (7/22, 7/23, 7/24)

**DAVIS' STONEWELL SHOPPING CENTER**

JUNCTION HIGHWAYS 85 AND 85A

HE 9-5398

NEW SCOTLAND, NEW YORK

WE GIVE UNITED TRADING STAMPS

Open Daily and Sundays 10 A.M. to 10 P.M.

WE GIVE UNITED TRADING STAMPS

## NEW COMEDY SERIES WILL BE SPONSORED BY TELCO

"Hank," a weekly, half-hour comedy series about a college "drop-in," will be presented at 8 P.M. Friday, September 17, on NBC-TV.

The Bell System will sponsor the new program every other week.

"Hank" relates the hilarious adventures of enterprising Hank Dearborn, a young man who attends Western State University although he isn't enrolled.

Hank, who is portrayed by Dick Kallman, would like to be a registered, tuition-paying student at Western State, but he lacks a high school diploma.

He was forced to withdraw from high school at the age of 15 when his parents died in an auto accident and he became the sole support of his sister, Tina. Tina is played by eight-year old Katie Sweet, who has graced the television and movie screens for more than five years.

Hank provides for himself and his sister by operating a mobile refreshment, clothing and school-supply stand that is something like a general store on wheels. He also operates a laundry service and shoe repair store.

In order to attend classes, he adopts various aliases and disguises, or takes the place of students he knows will be absent.

Hank's college life is complicated by the efforts of Dr. Lewis Royal, the registrar, whose hobby is finding unregistered students. Howard St. John, a veteran of the Broadway stage, plays the

pompously efficient Dr. Royal.

Track coach Ossie Weiss, played by Dabbs Greer, also makes Hank's life difficult. When he spies Hank leaping campus hedges because he is "late for class," coach Weiss envisions a champion hurdler and winning season. His attempts to identify the elusive Hank and "draft" him for the track squad provide many comic sequences in the series.

Other continuing characters in the new comedy series are

Hank's girl, Doris — enacted by Linda Foster, who also happens to be the registrar's daughter; Prof. McKillup, played by one of television's most familiar character actors, Lloyd Corrigan, and Tina's baby sitter, Franny, played by Kelly Jean Peters.

"Hank" is produced by Warner Brothers, in association with NBC-TV. The first half-hour telecast will be in black and white, the remaining 38 programs in color.

The Bell System will also spon-

sor the Bell Telephone Hour, Young People's Concerts and PGA Sports Network Telecasts during 1965-66.

### Boost for March of Dimes

The Albany County March of Dimes Organization received a boost in the amount of \$33. It represents the proceeds of a neighborhood carnival, held July

2nd in Delmar. Last year the committee realized \$13. The youngsters built their own booth and provided various games such as penny toss, sponge throw and fish pond. It was well patronized by parents in the neighborhood of Kenmare Avenue.

The committee in charge were Miss Ginny Owens, Chairman, Lori and Linda Schiavo, Pat, Liz and Jim Dineen, Pat and Steve Aiken, Sue and Katie Owens and Cindy Gaffney.

# NOW OPEN . . .

## National Commercial Bank service for Beckers Corners Berne Central Bridge Esperance Westerlo and surrounding areas

### BANKING SCHEDULE

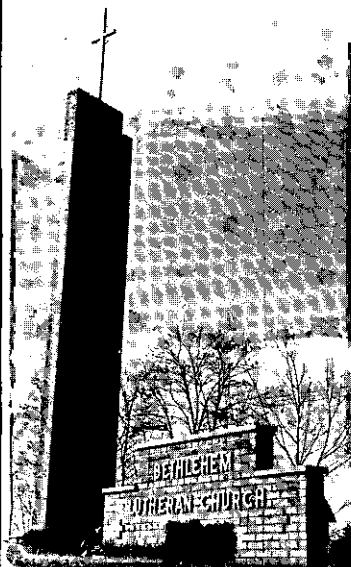
#### BECKERS CORNERS OFFICE:

Next to Sutton's Garage  
Monday and Wednesday  
10 a.m. to 12 noon

#### BERNE OFFICE:

### Top Soil at its Finest!

Rich, specially prepared,  
sandy loam or sandy clay  
loam. J. W. MICHAELS CO.,  
INC., LANDSCAPE CON-



85 Elm Ave., Delmar  
Services: 8:30 & 11:00 a.m.  
Vacation Bible School  
July 19-30  
Phone: 439-6217

**K** **KLERSY**  
Building Corp.  
**DELMAR**

"Homes of Prestige"  
**Offers A**  
**CUSTOM CAPE COD**

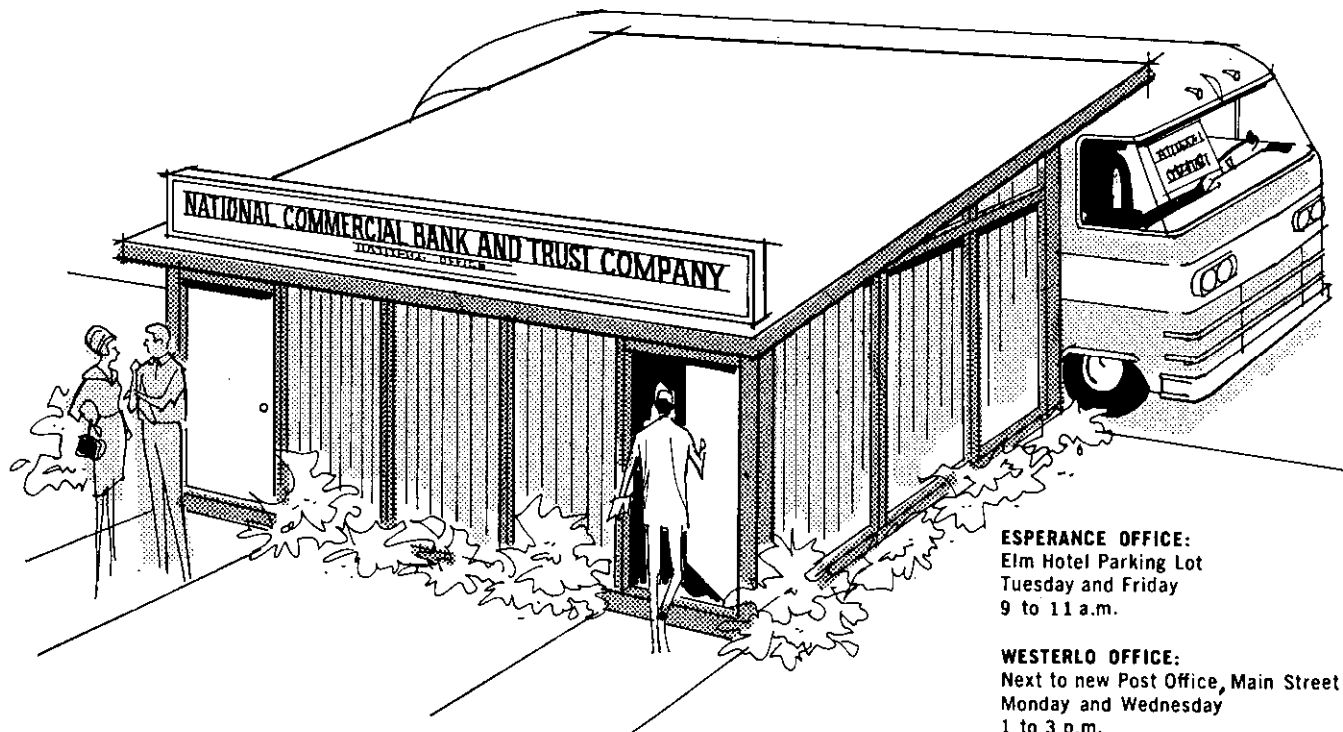
Traditional Styling  
and These  
Contemporary Aids

- 1940 sq. ft. of living area
- Living room, 25x13½, fireplace
- Beamed ceiling kitchen, built-ins
- 4 Bedrooms
- 2 Full baths, 2 car garage
- Fully landscaped, black top drive
- \$33,000., 80% financing

**At Westchester Park**

Left off Delaware Ave. at  
Elsemere Ave. to Fernbank  
Ave. to Wisconsin, left to  
No. 21.

**HE 9-4606 HE 9-9769**



**ESPERANCE OFFICE:**  
Elm Hotel Parking Lot  
Tuesday and Friday  
9 to 11 a.m.

**WESTERLO OFFICE:**  
Next to new Post Office, Main Street  
Monday and Wednesday  
1 to 3 p.m.

Bankers all over America are talking about these 5 newest National Commercial offices because they are unique in the United States. To all who attended our recent OPEN HOUSE, our hearty thanks for your interest and good wishes. We hope that you and your neighbors will find the NCB office of your choice increasingly helpful. If you're planning to open an account with us, take advantage of our special gift offer which continues through July 23rd.

### A FREE GIFT

when you open a Checking Account  
or Savings Account of \$25 or more

**SPECIAL GIFT OFFER THROUGH JULY 23rd**



#### SEA ISLE BLANKET

by Beacon, 72" x 90" — Deluxe size. Moth protected. Warm, easily laundered. Choice of 6 lovely pastel colors.



#### REGENT SCALE

Low, slim-line Regent Scale in new golden decorator design. Choice of 6 most wanted colors. Large magnifying lens dial.



**NATIONAL**  
**COMMERCIAL BANK**  
**AND TRUST COMPANY**

MEMBER FEDERAL DEPOSIT INSURANCE CORPORATION

FULL SERVICE BANKING through 48 offices in Northeastern New York State

**CENTRAL BRIDGE OFFICE:**  
D & H RR Parking Lot, Freight Yards  
Tuesday and Friday  
12 noon to 2 p.m.

**222 DELAWARE  
AVE.****MONTGOMERY  
WARD****FRI. AND SAT.  
SPECIALS**  
**Ward's**  
**Delmar Appliance**  
**and Catalog Store**

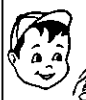
reg. 229.95

12.6 CU. FT.

**REFRIGERATOR**  
**SALE PRICE \$209****NO MONEY DOWN**  
**\$10 A MONTH**2-DOOR REFRIGERATOR, 105 LB. ZERO COLD  
FREEZER. CYCLE COLD AUTOMATIC DEFROST  
REFRIGERATOR**CALL . . .**  
**HO 2-2611****FOR OVER 130,000 ITEMS**  
**\*FREE CATALOGS**CATALOG ORDERS PLACED (Mon.-Fri.) before 12 noon can be  
picked up same day after 6 P.M. Orders placed after 12 noon on  
Friday, will be ready after 6 P.M. on Monday.

Merchandise listed above on sale

Wards Appliance and Catalog Store in Delmar

**OPEN MON. THRU FRI.**  
**9:30 TO 8:30 - SAT. TO 5:30****TRI-VILLAGE LITTLE  
LEAGUE STANDINGS****MAJOR**

<i>American</i>		
Di Napoli	9	7
Farm Family	8	7
Hilchie	8	9
Acousticon	7½	8½
Patterson	3	13

*National*

Albany Public	13½	3½
Main Bros.	10	5
Delaware Plaza	8	8
Delmar Phar.	9	7
Mullens	4	12

**INTERMEDIATE***American*

Hilchie	13	3
Farm Family	10	4
Patterson	8	8
DiNapoli	6½	9½
Acousticon	5½	10½

*National*

Main Bros.	10½	4½
Delaware Plaza	10	6
Albany Public	6	11
Delmar Phar.	4½	11½
Mullens	4	12

**KLERSY**

Mets	14	0
Cards	10	6
Orioles	9½	6
Pirates	7½	8
Red Sox	7½	8
Cubs	7	8
Yanks	6½	8
Indians	6	8
Tigers	6	8
Giants	5	10

**Teen-Agers' Summer Theater**

Charlatans' Summer Theater will open its first season with William Saroyan's *Hello, Out There*, directed by Lolly Geer, and Lucille Fletcher's *Sorry, Wrong Number*, directed by Sydney Turner, on July 24 at 8:30 in the Bethlehem Central Senior High auditorium.

The stock company consists of thirty dedicated teenagers under the direction of Mr. Sydney Turner, a drama coach and English teacher at Bethlehem Central. The company works in cooperation with the Bethlehem Summer Recreation Program.

Future plans include two more productions on August seventh. At that time *Archy and Mehitabel*, directed by Eileen Rasker, and Jean Giroudoux's *The Apollo of Bellac*, directed by Mr. Turner, will be presented.

The repertoire is purposely varied; "Sorry" is a suspenseful thriller, while "Hello," billed opposite it, is a sentimental drama with the usual Saroyanesque use of pathos. "Archy," taken from the classic poem by Don Marquis, is a "back alley opera," while "Apollo" is a satirical fantasy with a refreshing parody on the male vanity.

Starring in "Hello" are Judy Flandreau and Tim Platt. Eileen Rasker takes the leading role in "Sorry." "The Apollo" features Hank Kuivila and Lolly Geer. Archy will be played by David Skidmore and Mehitabel by Sharon Walworth. Mr. Lars Allan-son is technical director.

**BEAT THE  
SALES TAX!****ELSMERE LIQUOR  
STORE****222 DELAWARE AVE., DELMAR**

Phone 439-9229

**FREE DELIVERY**

Open Daily 9 A.M. to 10 P.M.

"As near as your phone"



# Annual Summer Clearance on

DISCONTINUED & BROKEN SIZES

Women's

**U. S. KEDS**

reg. 4.95

SALE PRICE

**2.95**

**DELMAR BOOTERY**

Four Corners

Jack Leonardo, Prop

HE 9-1717

Shoe Rebuilding by Factory Method

**Home Grown** PICKED FRESH DAILY!!

**SWEET CORN**

**Green & Yellow Beans**

**Summer Squash —**

**Tomatoes**

(Freshly-cut Meats)

**VAN ALLEN FARMS**

ON 9-W - FIRST FARM NORTH OF JERICO DRIVE-IN

OPEN 9 A.M. to 8 P.M.

ROger 7-9101

**30%**

... save that much at  
our **SEMI-ANNUAL SALE.**

We'll be open till 9p.m.  
Friday night.

CLOSED SATURDAYS  
DURING JULY & AUGUST



621 RIVER STREET/TROY/2 blocks north of Hoosick St./AS 2-2022

### Ambassador from Japan

On July 22, Mr. Katsuhiko Torii, a student of economics at Doshisha University, Kyoto, Japan, will arrive in Bethlehem as an Incoming Ambassador of the Bethlehem Community Ambassador Project. Mr. Torii is a native of Kofu, near Tokyo, where his family lives at present. His father is a dentist and there are also his mother, two older



brothers, and a sister in the family. His father has visited the United States and one brother has come here as a regular Experimenter. His other brother is doing graduate work at the University of Malaya.

Doshisha University was founded in 1875 by Dr. Neesima, who had attended Amherst College. In memory of Dr. Neesima, Amherst, in 1932, donated "Amherst House," a building in which nineteen young men are housed. A Fellow from Amherst is also in residence and here English conversation is practiced. Mr. Torii has been a resident of this house this past year.

Hospitality for this excellent young ambassador during his two months stay in Bethlehem has been arranged by Mrs. Robert Raymond. The families with whom he will live during his stay include Mr. and Mrs. A. Steber

Kerr, Mr. and Mrs. Kent D. Miller, Mr. and Mrs. Fred Muchelot and Dr. and Mrs. Theodore G. Brown, Jr.

Added to the International guest list on July 31 will be six teachers from Italy. These young ladies have been carefully selected by the Italian government, as well as The Experiment, and should prove delightful additions to our community.

Leader of the group is Santina M. Damonte of Genoa, who will be the guest of Mrs. Jessie Rezzemini, chairman of arrangements for the incoming group. Also from Genoa, is Ada LaGola, guest of Dr. and Mrs. Frank Lane, and Carla P. Calvi, guest of Mr. and Mrs. Emil Klushmann. From Turin, come Marie Blandin and Rosalba Copelli, hosted by Mr. and Mrs. Hildreth Bailey and Mr. and Mrs. Sidney Kaplan respectively. Mr. and Mrs. John Cunningham will have as their guest, Carla Buscaglia of Vercelli. (Mrs. Cunningham was Bethlehem Community Ambassador to Turkey in 1963).

To introduce all these young people to the members of the community, a reception will be held Aug. 4, from 8 to 10 P.M. in the Community Room of the Delmar Public Library. Everyone is cordially invited to attend.

**This Story Appeared in Print  
'Way Back in August 1905**

**Pretty Village Taking on Airs  
of Modern City —  
Water and Electricity**

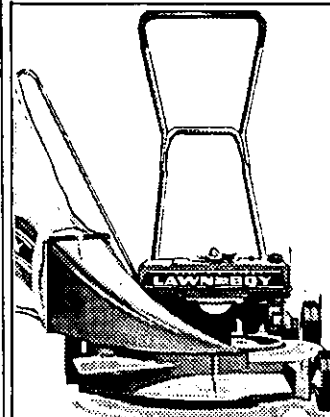
The pretty little village of Delmar is just now enjoying a boom. Fine new houses are being built,

the streets are being nicely graded, pure spring water has been piped into the city and a scheme is on foot to supply the village with electric light. When the contemplated improvements are completed the village will be one of the most desirable places of residence in the near vicinity of Albany.

The Suburban Water Company of Slingerlands has piped the town and is already supplying one-half of the inhabitants with pure spring water drawn from the rocks above New Salem. This water has been used in Slingerlands for the past two years and has given entire satisfaction. The new plant was installed at a cost of about \$3,000. Many of the residents have had their homes fitted up with modern plumbing and are now enjoying all the luxuries of a city residence. Among the fine houses erected in the village is one being put up by Dr. Bedell of South Bethlehem. The electric light will, it is hoped be installed before winter.

Oil, Pen and Ink Sketched  
Landscaping and homes on  
Christmas Cards —  
Framings  
**JOHN SCHRECK**  
HE 9-2835

**APPLIANCE AND  
TV SERVICE**  
**PAUL HOPKINS**  
HE 9-3820



**SALE ON**

USED — RECONDITIONED —

GUARANTEED

**POWER**

**LAWN MOWERS**

**\$20 up** REELS AND  
ROTARIES

Up to \$25.00 allowance (regardless of condition) on the purchase of a new Lawn Boy or Toro Power Mower

**TAYLOR & VADNEY**

**303 CENTRAL AVE. HE 4-9183**

**Open Daily—9 A. M. to 9 P. M.**



Are You Looking For A Home? or  
Household Items - Look in the Classifieds

## ANNUITIES

A LIFETIME INCOME  
FROM THE  
**METROPOLITAN LIFE**  
CALL  
**L. IRVING SMITH**  
AGENT  
IV 2-0623 or HE 4-1285

Complete Fishing, Golfing  
and ALL Summer Sports  
Equipment

*Gallagher's*  
**SKI**  
& Sport  
Shop

278 Delaware Ave., Delmar



*ROSE*  
**sale**

**We Are Forced to Sell All Roses  
Below Cost Due to the Water Ban.**

**FULL 40% OFF**  
**CLIMBERS, HYBRID TEAS,**  
**FLORIBUNDAS**

**EVERGREEN AND SHADE TREES**  
**FULL 25% OFF**

**10% OFF ON ALL LAWN  
CHAIRS AND FURNITURE**

**ALBANY AGWAY LAWN  
AND GARDEN CENTER**  
**642 S. PEARL ST. HO 3-6590**  
**WEEKDAYS 8-5 SAT. 8-12**



Operator Betty De Mark tells about her job at New York Telephone.

***"When you need  
a little extra help placing a call  
—that's what I'm here for!"***

"Nowadays, you can dial most calls faster than I can place them for you. But there are times when you might need help — when you make a collect call... or have a question about how to make a call. Or you might need special help in an emergency. These are some of the reasons I'm here. I'm happy when I can help... because I've learned how much a customer appreciates my taking time to understand what he wants, and then doing something about it. Knowing people depend on me for help is what makes my job so satisfying."

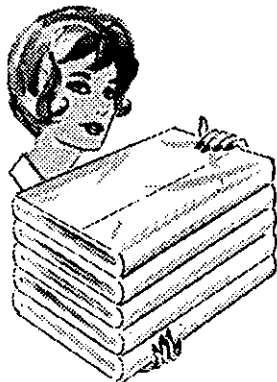
Telephone people — the heart of good telephone service



**New York Telephone**  
Part of the Nationwide Bell System

**SHOP****Myers**

Downtown Albany

**BARGAIN WEEK**  
**THURSDAY - FRIDAY - SATURDAY****LINEN  
SPECIALS****ON OUR 4TH FLOOR**

24 HOUR SHOPPING SERVICE

**CALL HO 5-3436**

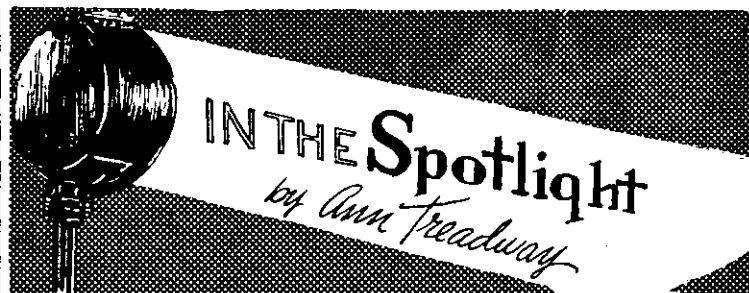
MAIL ORDERS ACCEPTED

**Vacation Time Is Here!**  
**TRAVEL THE  
NATIONWIDE WAY**

<b>WORLD'S FAIR—Every Mon., Wed., Fri., Sat. and Sun. (Trans. &amp; Admission) . . . . .</b>	<b>\$ 8.50</b>
<b>Every Weekend (Trans., Hotel, Adm.) . . . . .</b>	<b>19.95</b>
July 24-28—St. Anne DeBeaupre, Canada . . . . .	59.95
July 25-30—Virginia Beach . . . . .	84.95
Aug. 1 The Enchanted Forest — Old Forge, New York via Blue Mt. Lake — Indian Lake — Transportation only . . . . .	\$6.00
Aug. 12-17—Saguenay River Cruise . . . . .	94.95
Aug. 12-15 — Nantucket Island . . . . .	54.95
Aug. 15-20 — Virginia Beach . . . . .	84.95
Aug. 23-27 — Penn. Dutch Gettysburg . . . . .	74.95
<i>(All Tours Include Trans., Hotel and Sightseeing)</i>	
Passengers will be picked up in Schenectady, Albany, Troy, Watervliet, Cohoes, Green Island, Saratoga, Mechanicville, Glens Falls, Amsterdam, Gloversville, Fonda, Johnstown, Schuylerville, Broadalbin and Northville.	
For all tours out-of-state.	

For Reservations  
Call — **377-3392**  
**NATIONWIDE TOURS**

Owned and Operated by Schenectady Transportation Corp.  
1344 ALBANY ST., SCHENECTADY, N. Y.



At this writing, it's difficult to tell what the outcome will be of the bitter dispute between Saratoga Raceway officials and members of the Northeastern Horsemen's Association, but it threatens to curtail the enjoyment of many local persons who have been making frequent trips to the Raceway this summer.

Chances are a good number of locally-followed horses have been shipped by now to other racing sites.

"I'm in the dark about it all," Mr. Leonard C. Smith, who lives at 548 Kenwood Ave., told me last week. He and his wife own three horses that have been racing at Saratoga this summer. "I really don't know what it's all about," he said, "but I'm investigating the possibilities of sending the horses elsewhere."

There are other racing horse owners in the Tri-Village area, but I was unable to reach any of them for comment last week —

probably because they, too, were busy making arrangements for evacuating their horses from the Saratoga scene.

Mr. and Mrs. Smith have owned their racing horses for the past three years, and have been making the trip to Saratoga to see them in action on an average of four nights a week. The horses are named Christopher D, Wil March, and Summer Storm, and are trained and driven by Henry LeDuc.

The Smith-owned horses have done very well lately at Saratoga — Christopher D won two races in one week — but Mr. Smith is not one to hand out betting advice. "There are so many factors to be considered in every race," he said, "that you can never feel sure about which horse will win." He bets lightly on his own horses as well as on others, but admits that, over the long run, "I've lost my shirt."


Mrs. Smith greatly enjoys the



**Our  
Sweet Corn  
is Ready**

**Walley's Farm, Inc.**

924 New Scotland Road  
Albany, N.Y. AC 2-0543



**We Want Your  
BUSINESS!**

**ALBANY DODGE**

**949 CENTRAL AVE.**

... races, but declines to wager. "One gambler in the family is enough," her husband joked.

Mr. Smith, who with his son operates the L.C. Smith Bus Service, Inc. on Delaware Avenue, bought the race horses because: "I grew up on a farm and I've always loved horses."

There are many other horse-lovers in our local community, and it seems a shame that they may not be able to see their favorites pull away from the starting gate at beautiful Saratoga Raceway anymore this season. I don't know what it's all about, either, but one fact appears obvious: We, the racing fans, are the losers.

Last week's column contained a list of the 1965 graduates of Bethlehem Central High School who are planning to go on to college, and the colleges they'll be attending. It seems appropriate

to mention here some of the plans of the other class members.

Of the 375 graduates, 307 will continue their educations. (It might be noted that last year there were 275 graduates, 219 of whom entered college.)

Nineteen of the 68 non-college bound graduates of 1965 plan to enter the service, or have already done so. Most of the other 49 young men and women have launched careers, 17 of them in clerical and office work and 14 of the gals as secretaries.

Other jobs taken by the new graduates are in the fields of sales, mechanics, electronics, construction, radio and TV, art work, and plumbing and heating.

"We're proud of all our graduates," Dr. Harold Bookbinder, director of program development for Bethlehem Central schools, told me, in making these facts available. It should be mentioned

**We'll make your motor sing**



- \* Engine Tune-up
- \* Front End Alignment
- \* Automatic Transmission Service
- \* Modern Equipment
- \* Skilled Mechanics

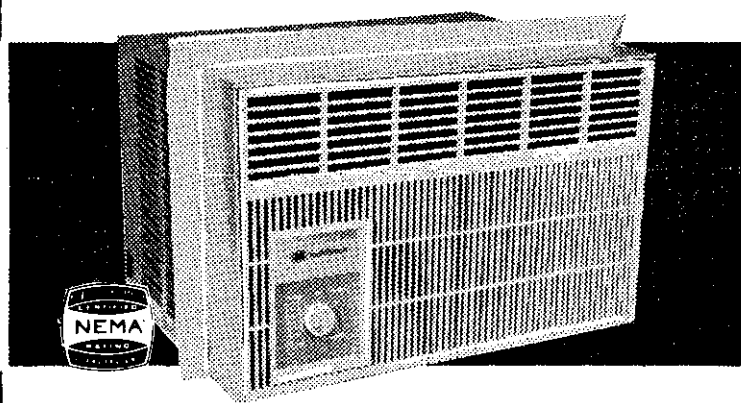
**BAILEY'S GARAGE**

Phone Delmar HE 9-1446  
Oakwood Rd., Elmsmere

*Grants*  
KNOWN FOR VALUES

*A thrifty  
air-conditioner made  
for dependable  
service means you'll*

**Sleep COOL Tonight**



**5000 BTU AIR CONDITIONER  
COOLS AVERAGE BED ROOM**

Instant installation. Buy it now, sleep comfortably tonight. Rust proof aluminum cabinet. 2-speed fan, washable filter. Ideal for bedrooms or children's rooms.

115 volt 7.5 running amp

**only  
99<sup>95</sup>**

**NO MONEY DOWN  
... 1.25 weekly**

**available at most stores**

**W.T. GRANT CO.**

*Your Friendly Family Store*



**JOIN  
OUR  
VACATION  
CLUB**

Hundreds of our depositors are taking off on all kinds of vacations this summer . . . to Europe . . . Hawaii . . . California . . . the Mountains . . . the Seashore . . . glorious care-free days made possible by their VACATION CLUB savings in the Mechanics Exchange Savings Bank.

Whether it be for a vacation or for any other worthwhile purpose you will find this bank the ideal place for your savings, with THREE CONVENIENTLY LOCATED OFFICES to serve you.

Come in and get acquainted with our courteous, helpful service.



Interest Payable from Day of Deposit  
Compounded Quarterly



111 WASHINGTON AVENUE

ALBANY

**MECHANICS  
EXCHANGE  
SAVINGS  
BANK**

MEMBER FEDERAL DEPOSIT INSURANCE CORPORATION



275 WEST 12TH STREET



47 STATE ST.

NEW YORK

# BRECK - CARYLE RICHARDS - BONAT PERMANENTS

## 30% OFF

FIRST 4 DAYS OF WEEK

OFFER GOOD  
UNTIL AUGUST 19



ALL REGULAR \$12.50  
PERMANENTS

### \$9.95

Phone for Appointment  
Open Mon., Thurs., Fri. 9-9  
Saturday 9-3  
During July and August ONLY

THE *Mele's Beauty Salon*

11 Delaware Plaza, Delmar Phone for appointment HE 9-4411

SPOTLIGHT CLASSIFIEDS TELL THE WORLD  
CALL HE 9-4949

also that Mrs. Gladys Hosey, a teacher of business subjects at Bethlehem Central, has for years worked closely with local businesses in an effort to give pupils on-the-job training and to place them in suitable post-graduate working positions.

Some Delmar friends of Dr. and Mrs. Albert C. Mossin — who are currently touring the world — passed on to me the humorous contents of a postcard received from the couple while they were in Leningrad, Russia.

Dr. Mossin penned: "I can communicate quite well in Russian, but the trouble is that they answer in Russian."

We should all have such troubles.



Subscribe  
Now!!

# LETTER

Dear Mr. King,

I would like to write you to express my appreciation to you and the Spotlight for the generosity and thoughtfulness shown music, the arts and me personally during the years of my life in Delmar and the Tri-Village area. I am grateful for my life here and for the opportunity of working with students of Bethlehem Central Schools and with adults of our community. We are rich with talent and I will always remember the thrilling, heart-warming and meaningful experiences it has been my privilege to have. Of course I will miss the various facets of my life here.

Although I am leaving for Illinois, Delmar and the Tri-Village area will always have a special place in my heart. I will follow life here, naturally, and the Spotlight will help me to do so.

Thank you again, Mr. King. Our schools and our community will have great years ahead and you will help make them so.

Sincerely yours,  
Rolland R. Truitt

## FREE MAPS — WORLDS FAIR

AETNA CASUALTY AGT.

**KEN HALLENBECK**

HO 5-4838

INSURANCE FOR MODERN  
DAY LIVING

• Business • Home • Auto



and **Paddock**

The two most trusted  
names in swimming  
pools.

## AMERICA'S FINEST POOL

- Pre-Engineered steel wall vinyl liner construction
- Completely guaranteed to give you a lifetime of pleasure
- Ready in just two weeks with no money down and financing up to 7 full years
- Installed by Paddock Pool Builders — the largest and oldest pool builders in the Northeast

Display pool at Green Thumb Garden Center, Columbia Turnpike, East Greenbush

PADDOCK POOL BUILDERS, INC.  
P.O. Box 5101 Albany, N. Y.

Gentlemen please forward me FREE color brochure.

Name.....

Address.....

City.....State.....

Phone.....

"DS"

**PADDOCK**  
POOL BUILDERS INC.

118 Railroad Avenue Extension, Albany, New York

Phone Albany 459-3121 Or mail the coupon

for free color brochure.

24 hour phone 459-4781

ORDER NOW  
SAVE  
THE 2%  
SALES TAX



5 P.M. FRI.  
TO  
9 A.M. MON.

**WEEKEND SPECIAL**

Rent a Car

PLYMOUTH

### 595

Per Day  
Plus  
10¢ a Mile

For Reservation, Phone

**IV 9-5487**

**Avis Rent A Car**

INQUIRE ABOUT OUR LOW  
TRUCK RENTAL RATES

## SPOTLIGHT CLASSIFIEDS HE 9-4949

### CLASSIFIED AD POLICY

Classified Ads in the Spotlight must be paid for when the ad is submitted. We must enforce this policy strictly. Our rates are too small to permit invoicing and bookkeeping on these accounts. Please do not ask us to make any exception to this rule.

Your copy and remittance must reach us on Friday before 4:30 P.M. in order to appear in the following Thursday issue.

### CLASSIFIED ADVERTISING RATES

10¢ per word for each insertion;  
\$1 minimum.

CALL HE 9-4949

Write, or stop in at our  
convenient office:

154 Delaware Avenue

### ALTERATIONS & SEWING

ALTERATIONS and sewing. M.  
Buess. HE 9-1270. tf

ALTERATIONS and sewing. Kirk  
Hause HE 8-0014. tf

### APPLIANCE SERVICE

WESTINGHOUSE, RCA, Kelvinator. Guaranteed used washers. Area Appliance Service. HE 9-2953. tf

RAE: small appliances repaired. Free pick-up and delivery. RO 7-3821. tf

### BUILDING & CONTRACTING

HOMES, garages, remodeling, additions, "easy terms." Hogan Construction Co. IV 2-4693. tf

### BLACKTOP

LUZZI BROS., Blacktop Paving: Parking lots, driveways, garage floors, sidewalks. Free estimates. 482-3484. tf

### CARPENTRY

REMODELING — All types of carpenter work. H. A. Ertel, HE 9-1048. Ed Hehre, HE 9-1198. tf

ADDITIONS, remodeling, roofing, stairs, general repairs. Arthur Molle. HE 8-7165. tf

SERAFINO: contracting, painting and carpentry. Free estimates. RO 5-2186. tf

CARPENTRY and mason repairs. No small job refused. Gosse. HE 6-1202. 8t85

### CLEANING SERVICE

HOUSE CLEANING, window washing, floor maintenance,

### NEED CARPET?

Shop Smart! See Mill Ends at

### GENTILE'S

1100 Central Ave. at The Underpass  
IV 2-3398 Daily 'til 9

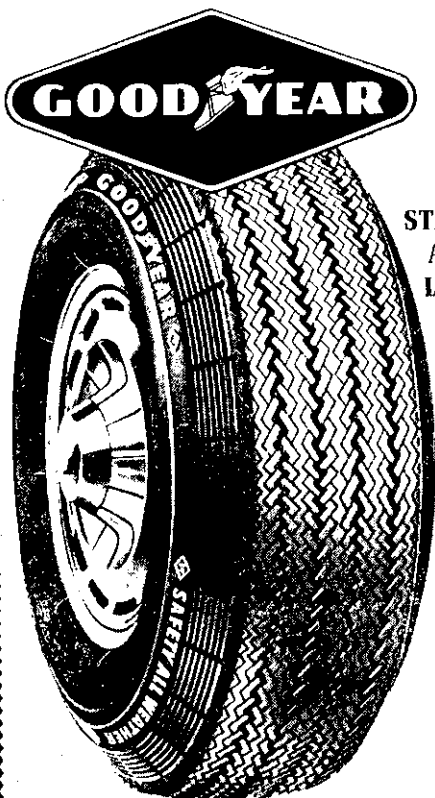
### von Bank's TV SERVICE HE 4-5887

Quality — Responsibility — Honesty

### JAMES W. BARTLEY and SONS

Plumbing, heating & electric  
water pump sales & service  
Clarksville PO 8-2230

## Goodyear's Newest Extra-Mileage Tire At Down-To-Earth Prices!



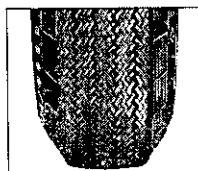
**\$16.90**

STARTS  
AT A  
LOW...

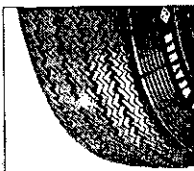
8.00 x 13 rubberless  
blackwall, plus  
tax and old tire.  
Sizes to fit all  
cars at similar  
low prices.

### NEW WET-AND-DRY-WEATHER TIRE

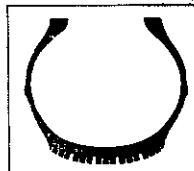
Safety All-Weather "8" — Modern wrap-around  
tread, extra strong 3-T Nylon and Tufsyn



**NEW TREAD DESIGN** Adapted  
from our proven original equipment  
tires — proved in wet and dry weather  
on millions of cars!



**WRAP-AROUND TREAD**  
Gives better "bite" for greater con-  
tact and stability when tires lean  
into a corner!



**NEW LOW PROFILE** Wider and  
lower, hugs the road better. You get  
greater contact and traction, less  
squat in turns.

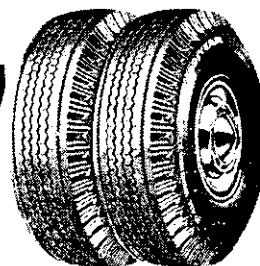
**NO MONEY DOWN!  
FREE MOUNTING!**

"No Limit" Guarantee!

### GET GOODYEAR QUALITY AT LOW-LOW PRICES!

All-Weather "42" — the only low-priced tire  
with 3-T Nylon and Tufsyn rubber. Tested for  
100 miles at 100 miles an hour!

**2 for \$17**



6.70 x 13 rubberless blackwall,  
plus tax and 2 old tires

### Goodyear Truck Tires at Auto Tire Prices!

Our famous extra-mileage  
**RIB HI-MILER**

Built with Tufsyn rubber for extra mileage  
and 3-T nylon cord for extra strength!

**2 for \$30**

6.00 x 16 size plus tax and 2 recap tires

**GO GOODYEAR**

# Albert E. Oliver

THE NAME FOR YOUR BEST TIRE DEAL

We Close at 12 Noon  
Saturdays During  
July and August



206 CENTRAL AVE.  
ALBANY  
HO 5-3561

also any other cleaning you need.  
Old Holland Cleaning Service.  
Inc. RO 7-2739. tf

### DOLL REPAIRING

DOLLS repaired, restrung, costum-  
ing. Reina Deitz. HE 6-1690. tf

### DRIVER TRAINING

FREE BROCHURE available ABC  
Auto Driving School. Dial 438-  
0853 now. tf

### FUNERAL DIRECTORS

**M. W. TEBBUTT'S SONS**  
Albany Delmar  
420 Kenwood Ave.  
HE 9-2212

*Serving All Faiths  
For Over 100 Years*

### FURNITURE REFINISHING

FURNITURE repairing, refinish-  
ing, re-upholstering. French.  
HE 4-0633. tf

### FORMAL RENTALS

**MEN'S** — All types available. Latest  
styling, for graduation, weddings,  
dances, etc. On 24-hour notice.  
Reasonable TAD'S, 4 Corners.  
HE 9-4511. tf

### INSTRUCTIONS

**GUITAR** — Folk styles, beginning  
thru advanced. Call Jon Cons.  
439-3352. 4t722

Subscribe to the Spotlight

## Albany Driving Academy

Glenmont, New York  
Beginners - Intermediates  
Brush-Up

CARS AVAILABLE FOR  
ROAD TESTS

Standard & Automatic  
\$6 per hr. Call HO 2-1309

### LAWNMOWERS

**LAWNMOWERS:** Jacobsen, Good-  
all, Lawnboy sales. We service  
all makes. Pickup and delivery.  
HILCHIE'S HARDWARE, Del-  
mar. HE 9-9943. tf

### LAWN MOWERS SHARPENED

Lawn Boy and Toro Sales-Service. Free  
pickup-delivery.

**Taylor & Vadney**

303 Central Ave. HE 4-9183

**IMMEDIATE** repair or overhaul -  
all makes lawn mowers. HE  
9-4873. 4t715

**LAWNMOWERS** — Jacobsen 4  
blade Turbocone rotors, reels,  
riders. Sales & Service. M.  
GUDZ, 138 Elm Avenue, Del-  
mar. HE 9-2025. tf

### MASON WORK

**EXPERIENCED**, all types masonry,  
new or repairs. Guidara. HE  
9-1763 evenings. tf

**MASONRY** and carpentry. Exper-  
ienced. Fireplaces. Alterations,  
additions. Fred Chalcrafts. HE  
9-1796. tf

### MOVERS

#### LONG FOR LONG DISTANCE.

Local and long distance mov-  
ing. Agents for Atlas Van Lines.  
Free estimates. D. E. LONG &  
SONS. HO 3-6626. tf

**D. L. MOVERS.** Local and long  
distance moving. Reasonable  
rates. No job too small or too  
large. Dick Leonardo. HE 9-5210.  
tf

**LIGHT HAULING** — refrigerators,  
washers, ranges. Tri-Village, rea-  
sonable rates. Weekends only.  
HE 9-1140. tf

**HOUSEHOLD MOVING**, low rates,  
new equipment, experienced  
personnel, free maid service.  
Local moving. 465-1200 tf

### ORIENTAL RUGS

**NEW AND USED**, in all sizes and  
colors at reasonable prices. Wash-  
ing and repairing by native ex-  
pert. Pickup and delivery. Free  
estimates. Rod Kermani, Stop  
3, Albany-Schenectady Road,  
EX 3-6884 or IV 2-0457. tf

### PAINTING & PAPERHANGING

**INTERIOR**, exterior painting. Free  
estimates. Work guaranteed.  
Jim Vogel. HE 9-9718. tf

**INTERIOR** and exterior painting.  
Also carpentry work. Frank Sals-  
bury. Days: HE 9-5527; nights:  
HE 9-1355. tf

**FREE ESTIMATES** — interior.

exterior painting, paperhanging.  
Insured. Don Vogel. HE 4-8370. tf  
**ROY FLANSBURGH**, painting  
contractor. Voorheesville. RO  
5-2712 or RO 5-2896. tf

### PERMANENT WAVING

**SPECIALIZING** in Breck, Realistic,  
Rayette and Caryl Richards per-  
manents; hair tinting and bleach-  
ing. MELE'S BEAUTY SALON,  
Plaza Shopping Center, HE  
9-4411. tf

### PIANOS

**PIANOS — MASON & HAMLIN**,  
Knabe, Fischer, Weber and Stark,  
also fine selections of slightly  
used pianos. Call A. Andrew Gig-  
liotti. HO 3-5223. tf

### SAW FILING

**SAWS** sharpened, chain saw ser-  
vice. N. Livingston, 4 Mountain-  
view, Karlsfeld. IV 9-1979. tf

### SCISSORS SHARPENED

**SIX** pairs medium size scissors  
\$2; also pinking and grass shears,  
knives, lawnmowers. Call for and  
deliver. HE 9-3893. tf

### SEPTIC TANK SERVICE

**NORMANSKILL** Septic Tank  
Cleaners. We install dry wells,  
septic tanks, drain fields. 767-  
9287. tf

**DELMAR SANITARY CLEAN-**  
**ERS.** Serving Tri-Village area  
over 20 years. HE 9-1412. tf

### SIPCOVERS & UPHOLSTERING

**REUPHOLSTERING**, slipcover  
made to order, reasonable. 25  
years experience. HO 3-2358.  
2t729

### TOPSOIL

**TOP SOIL** — finest top-loam soil,  
immediate delivery. Call J. Wig-  
gand & Sons, Glenmont, N. Y.  
HE 4-8550 and HO 5-3992. tf

**TOP SOIL AT ITS FINEST!** Rich,  
specially prepared sandy loam or  
sandyclay loam. J. W. MICHAELS  
CO., INC., LANDSCAPE CON-  
TRACTORS. HE 9-3823. tf

### TREE SERVICE

**HERM'S TREE SERVICE:** trim-  
ming and removal (insured).  
Call Albany, IV 2-5231. tf

### TUTORING

**SECOND** year graduate student,  
University of Paris possessing  
American B.A., seeks students  
for tutoring in French. HE 9-1196.

### VACUUM CLEANER SERVICE

AUTHORIZED Hoover dealer

**Colonial  
Artes**



RT. 32, GLENMONT, N.Y.  
A planned community of  
early American homes.

PHONE HE 9-9231

# BLACK TOP PAVING AT LOWEST PRICES

*Delmar Towne Construction*

- General Construction  
and Mason Work
- Estimates with NO  
obligation to you

*Call HE 9-1836  
EX 3-1554  
EL 5-8793*

### '65 Rambler \$2495

Conv. Cpe. & auto. R&H.  
2,000 actual miles.

### CRAILO FORD

### '64 Ford \$1895

Cust. Spl. 2-Dr., 4 cyl.,  
Stand. R&H. Low mile-  
age.

### CRAILO FORD

### '64 Ford \$2295

4 Dr., XL H'op. V8 Auto.  
R&H. Bucket seats.

### CRAILO FORD

### '63 Falcon \$695

4-Door Sedan, 4 cyl.,  
Standard. R&H.

### CRAILO FORD

E. Greenbush



sales & service, all makes, free pickup. Best Vacuum Service, 538 Clinton Avenue, Corner No. Lake, Albany. HE 6-4147. tf

### WATCH REPAIRING

**EXPERT WATCH AND JEWELRY** repairs. Diamond setting, engraving wedding and engagement rings, reasonable. Your trusted jeweler, D. LeWanda, Delaware Plaza Shopping Center. HE 9-9665.

### MERCHANDISE FOR SALE

**ALUMINUM** combination windows, doors, siding, etc. Finest quality at lowest prices. Taylor Aluminum Products. RO 5-2856. tf  
**ANTIQUES** bought and sold at the sign of the Coffee Mill, 67 Adams Pl., Delmar. HE 9-1021. tf  
**FURNITURE**: our low cost operating policy enables us to bring

you **BIG SAVINGS** on **NEW** furniture, rugs and bedding. **BURRICK FURNITURE**, 560 Delaware Ave., Albany. Just across the Thruway Bridge in Albany. tf

**FUEL OIL**: 2¢ per gal. cash discount. Academy Oil Service, Glenmont. 24-hour service. HO 2-1309, 465-5336. tf

**MERCHANDISE CLUB**, "Tads" 4th semi-annual — now forming-reservations now accepted — opening date June 28 — first drawing July 3. Details furnished by phone or at the store, phone 439-4511. Club completed November 21, in time for Xmas. tf

**STANDING HAY**, 25 acres. Grace Martin, Feura Bush Rd., opposite Waldenmaier. HE 9-3374.

**FRIGIDAIRE**, Custom Imperial, combination range and double oven, can be built-in with or without storage cabinet base. Spotless, like new. Call eve-

nings. 439-5064.  
**TURKEY** plucker, stainless steel, excellent condition. Call evenings. 439-5064.

**CLOTHES**, CBS, 36-38, excellent condition, reasonable. HE 8-3614.

**SEALY** mattress or box spring \$59.95, special \$39.95. Michel-son's Quality Furniture, 1704 Western Ave., Albany. HE 8-5321.

**GE ELECTRIC** Range, model J-299Y, 30 inch, brand new, never used. HE 9-3372.

**PRACTICALLY** new, 100% wool rug, 12'x14', soft moss green, mothproofed, cleaned & wrapped, with pad, originally \$340 - \$150. Large, old dry sink, stripped, \$30. Oak table, 30"x45", refinished, \$25. Mahogany 6-drawer chest, brass pulls, \$25. Stienhorst chest freezer, \$75. Kodak 33MM. Camera, leather case, rarely used, \$25. 439-3371.

**FURNITURE** and assorted household items. Bargains galore. 19

La Grange Road, Delmar. HE 9-4731.

**TAKE SOIL** away the Blue Lustre way from carpets and upholstery. Rent electric shampooer \$1. Adams Hardware, 380 Delaware Avenue, Delmar.

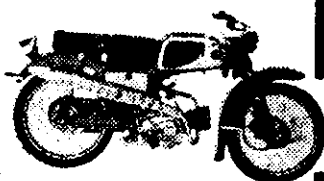
**PEAT MOSS**, 6 cubic ft. bale, \$3.90. Cedar Hill Iris Gardens, Selkirk. RO 7-3808.

**COLONIAL** living room, 2-piece, regular \$279 - special \$179. Michel-son's Quality Furniture, 1704 Western Avenue, Albany. HE 8-5321.

**KLEPPER BOAT** (Kayak) 2-seater with sails and 2 sets double bladed paddles. Cost \$325, sell for \$150. GR 7-9365.

**TAXLESS** Knapp shoes. Order before August first. Perry. HE 9-1221, HE 4-7051. 3729

**SWIMMING POOL**, 12 ft. dia. x 3 ft. deep. Filter, diving ladder. Asking \$65. Wool

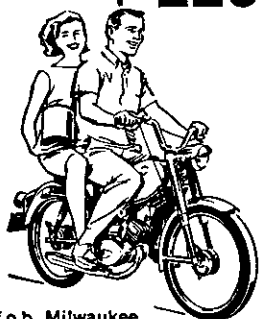


# HONDA

**All Models**  
**Authorized Dealer**  
**Parts—Sales—Service**  
Serving Tri-Cities since 1958

**JAF**  
**MOTORS INC.**  
1371 Lower Broadway  
Schenectady, N. Y.  
EX 3-2621

COME SEE **LOWEST**  
**50** **COST**  
**FUN ON**  
**WHEELS**  
**\$225\***



\*f.o.b. Milwaukee

**NEW FROM**

**HARLEY-DAVIDSON**

Immediate delivery on  
1966 Model M-50

Harley-Davidson — a famous American name — now introduces America's newest fun wheels, the nifty, thrifty M-50. A stylish blend of American and Continental workmanship guaranteed to please the eye and the pocketbook. An all steel, welded frame forms a sturdy backbone for the M-50's dependable 50 c.c. engine. There's 180 miles of fun packed into every gallon of gasoline along with miles of adventure. One ride and you'll agree — the M-50 by Harley-Davidson is the greatest new go on wheels. Take a look and a ride on this fabulous featherweight at:

**SPITZIE'S**  
**SALES**

Stop 9, Albany-Schenectady Rd.  
(Route 5) Tel. EX 3-2127

**M-50 FOR AMERICA**  
**ON THE MOVE**

**Chuck Terry • Bob Haggerty**

**Proudly Announce Their New Dealership**  
**in the Greater Albany Area for the**

# VESPA SCOOTER

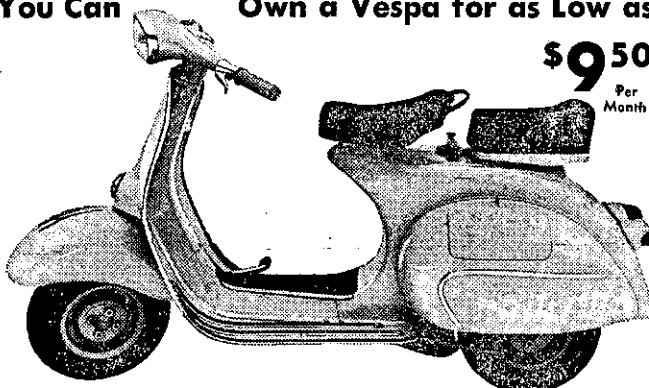
**No radiator to boil.**  
**No valves to grind.**  
**No battery to run down.**  
**No fuel pump to fail.**  
**No starter to stop starting.**

**Maybe your second car**  
**shouldn't be a car.**

**Maybe it should be a Vespa.**

**You Can Own a Vespa for as Low as**

**\$9.50**  
Per Month

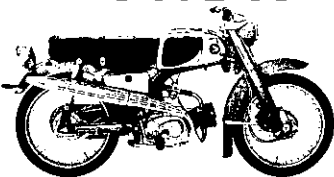


# TERRY - HAGGERTY

TIRE  
CO.

**32 CLINTON AVE., ALBANY PHONE HE 4-5185**

# HONDA



**NEW**  
**SHIPMENT**  
**— All Models**  
**just in time to beat**  
**the Sales Tax**  
AS LOW AS

**\$9.50** PER  
MONTH

Larger Models In Stock  
New Low Insurance Rates

**HAGIE'S SALES**  
PARTS & MONROE STS.,  
50. TROY

Open Eve's Except Wed. & Sat.  
"THE HONDA CENTER OF  
THE CAPITAL DISTRICT"

carpets, assorted sizes & colors, make offer. HE 9-1061.

**REFRIGERATOR** — Westinghouse "Space King". Right hand, one year old. HE 9-2795.

**TV CONSOLE**, davenport, miscellaneous furnishings. HE 9-9988.

**REFRIGERATOR**, Montgomery Ward, 9 cu. ft., excellent condition. 768-2067.

**WARD HOLIDAY** camper with boat carrier, \$279.00. HE 9-2776.

**EVERYTHING MUST GO**. Dishes & bric-a-brac. Some antiques, furniture, glass ware; Whirlpool washing machine. By appointment only. HE 8-3863.

### AUTOMOTIVE FOR SALE

Saab Authorized Dealer

### NEW SALEM GARAGE

New Salem Route 85  
DeWitt and Fred Carl  
— NEW AND USED CARS —  
Telephone RO 5-2702

**1963 VOLKSWAGEN** convertible, green, 39,000 miles, \$1395. HE 4-9133, 767-2723. 4t85

**1960 JAGUAR** 3.8 sedan, completely restored engine, new brakes, battery, electrical system, exhaust system, tires & snow tires. No reasonable offer refused. 439-3371.

**1964 FORD** 4-door, custom 6 cylinder, standard shift, 7000 miles, practically new, private owner, \$1795. HE 9-3861.

**1964 HONDA** 50, excellent. 439-3368.

**1960 ALFA-ROMEO** sport roadster, real nice. IV 9-8274 or HE 9-4338.

**1960 SUNBEAM ALPINE**, mechanically excellent, 1 year old transmission, wire wheels, OD, snow tires, new battery & electrical system, body & paint almost like new. 439-3371.

**SIMCA** 1961 4-door sedan, excellent condition, runs well, 30 miles per gallon, good tires. Asking \$425. 439-9143 after 7 P.M.

### PETS

**KITTENS**, 4 red males, one tortoise shell female, six weeks old, many toed, FREE! HE 9-3532. 7t22

**FREE KITTENS**, part angora, male, 7-toed tiger, yellow, housebroken. 439-4874.

**SIAMESE** sealpoints, 3 males, pure bred, housebroken, 9 weeks all shots, \$30. 439-4109 after 5:30.

### WANTED TO BUY

**AUTOMOBILE ENGINE**, preferably V-8, running condition, maximum price \$20. HE 9-4556. Ask for Joe.

**USED UMBRELLA** tent, dry finish. Good condition. HE 9-2058.

### REAL ESTATE FOR SALE

**"CLIFTON KNOLLS"** — off Northway, colonial, 1-year old, 9 rooms, 2 1/2 baths, 2 car garage, GE kitchen, beautifully landscaped. Owner. 877-7931.

**DELMAR** — Fernbank Avenue, large Cape Cod, lovely wooded lot. HE 9-3740.

**RANCH** home, 3 bedrooms, 25 Murray Ave., Delmar. HE 9-3403. 4t812

### REAL ESTATE FOR RENT

**CAPE COD**, Bass River. **THE BLUE LODGE**, South Shore. 2-3 bedroom housekeeping cot-

tages. From \$105 weekly, July-August. From \$60 weekly, off season. Linen not provided. 439-3213. tf

**DESK SPACE** and phone in State Bank Building, Albany. HO 3-4419. tf

**SIX-ROOM** apartment, 2 bedrooms on 2nd floor, Elmsmere, \$135, including heat, electric, garage, air conditioned. Available now. HE 9-3790.

**DELMAR OFFICES** for rent, Delaware Ave., choice location, adequate parking. HE 4-2790. 2t729

**DELMAR** — one room apartment, \$55, heat, hot water. HE 9-5571.

**DELMAR** — first floor apartment, heated, hot water, 4 rooms, bath, adults preferred, no pets, available at once, \$120. Paddock. HE 9-4772.

**DELMAR, \$100** — three rooms, bath, heated, range, refrigerator, garage, available August 1st. 439-4508. 2t722

### REAL ESTATE WANTED

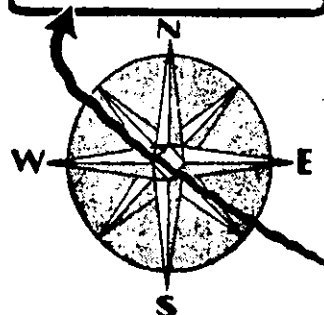
**ONE FAMILY HOME** or apartment, minimum 2 bedrooms, two adults, on bus line. Call "Tracy." 439-5411.

### WANTED TO RENT

**LARGE HOUSE**, 8 to 12 rooms, Bethlehem School District. IV 2-3257. 2t722

**SPOTLIGHT Classifieds** will Do Practically Anything!

**THERE'S ONLY ONE  
DIRECTION FOR THE  
BEST USED CARS IN  
TOWN. EVERYONE WILL  
DIRECT YOU TO....  
MARSH HALLMAN**



**Fast Becoming  
New York State's  
Largest  
Chevrolet Dealer**

**OVER 300 CARS  
NOW IN STOCK**

**Marsh Hallman**  
**CHEVROLET**  
781 CENTRAL AVE.  
IV 9-5551  
Open Evenings



# Set Your Sights On A BÄRGAIN! At OUR Annual ROUND-UP SALE — AT — DODGE CITY!

## • ECONOMY IMPORTS •

'64 SUNBEAM "IMP" Sed. Light Gray.....	\$1089	'62 VOLVO 122S 4-Dr. Red and White.....	\$899	'63 AUSTIN-HEALEY "3300" Deluxe.....	\$688
'63 MG "1100" Sedan, Black .....	\$1099	'63 TRIUMPH Spitfire Roadster, White .....	\$1545	Damaged .....	
'63 MG "1100" Sedan, White ....	\$1195	'61 PORSCHE Super Coupe, Red, matching interior. A low mileage one owner Real sharp .....	\$2288	'60 CONSUL 6-Passen- ger Convertible .....	\$399
'62 ALPINE Roadster, White .....	\$1099	'59 SIMCA 4-Door, Blue .....	\$129	'60 RENAULT Sedan, Black .....	\$499

OVER 100 TRADE-IN TO CHOOSE FROM

*You Can Pay More . . . BUT WHY?*

YOUR OFFER MAY BE OUR SELLING PRICE

# CIRCLE DODGE, Inc.

NEMITH, LATHAM

ST 5-8531

APARTMENT — two bedrooms, Tri-Village area. Range and refrigerator required. Up to \$120. HE 9-2537.

**HELP WANTED**

**TOY DEMONSTRATORS**

Start at 20% Commission

The original Discount Party Plan

No collecting or delivering  
**OPPORTUNITY TO EARN  
SAMPLE KIT AT NO COST**

Mrs. Helen Mintline,

District Manager

American Home Toy Part-  
ies, Inc.

P. O. Box 676

Voorheesville, N.Y. 12186

Tel. 765-2343

HOUSEKEEPER for three weeks  
to care for children, must drive,  
references. Call evenings. 439-  
5064.

SUBSCRIBE TO

THE SPOTLIGHT

**FULL TIME** help wanted — male  
or female, to work in all phases  
of the dry cleaning industry.  
Applications are now being ac-  
cepted at United Cleaners, 158  
Delaware Ave., Delmar. tf

**SITUATIONS WANTED**

**EXPERIENCED** high school stu-  
dent would like summer baby-  
sitting jobs. HE 9-4718.

**HIGH SCHOOL** graduate, experi-  
enced with handicapped child-  
ren, would like babysitting. HE  
9-2821.

**BABYSITTING.** experienced  
young teenage girls, references.  
HE 9-3740.

**HANDYMAN** — no job too small.  
439-5558. 4t722

**LIGHT HOUSEWORK**, ironing,  
baby sitting. References.  
439-4566.

**LOST & FOUND**

**GIRL'S** black prescription glasses.  
vicinity of Delmar Elementary  
School and Dykeman Road.  
Reward. 439-1683.



*Are you doing your job for  
water conservation??*

NOW ASSOCIATED WITH  
**WESTGATE  
LINCOLN - MERCURY**

945 Central Avenue

589-5421

*Pete Jones, Jr.*

For NEW and USED CARS

Call Anytime OR

Come in and see PETE!

(Delmar and Tri-Village Representative)



**ACT FAST!**  
**JACK BODNAR'S BIGGEST  
88 SALE!**  
*Only*

**88** cars (Delta 88s, Jetstar 88s,  
Dynamic 88s)

**88** days 'til first payment  
Immediate financing available

**88** gallons of gas free

**88** business hours

**Bodnar  
Oldsmobile**

*In Progress for*

526 Central Avenue, Albany, the home of red carpet service



Open Mon. thru Fri. 'til 9 - Sat. 10 to 5:30

# Annual July Sale!

outstanding values . . . prime selections!

## men's dept.

## TROPICAL SUMMER SUITS

- entire stock • 2 & 3 button models
- our famous maker's & nat'l adv. brands

reg. 45.00 **29<sup>99</sup>** reg. 49.95 & 55. **39<sup>99</sup>**

Newest colors in all sizes, regulars, shorts, longs, x-longs, x-shorts, portlys, short-portlys, long-portlys.  
CUFFS FREE . . . slight charge for other alterations

## men's dept.

## TROPICAL SUMMER SLACKS

- entire stock
- our famous maker's & nat'l adv. brands

reg. 10.95 **8<sup>99</sup>** reg. 12.95 **9<sup>99</sup>** reg. 14.95 **11<sup>99</sup>**

Newest colors. Sizes 29 to 44.  
CUFFS FREE . . . slight charge for other alterations.

## men's dept.

## TROPICAL SUMMER SPORTCOATS

- entire stock
- our famous maker's & nat'l adv. brands

reg. 29.95 **24<sup>99</sup>**

All sizes, regulars, shorts, longs.

## men's dept.

## Stretchie Dungarees

Sizes 28 to 36

reg. 6.98 **3<sup>99</sup>**

## famous brands Chinos

Sizes 28 to 38

reg. 5.98 **3<sup>99</sup>**

NO ALTERATIONS

## men's furnishings

short-sleeve Sport Shirts reg. 4.00 **1<sup>99</sup>**

Swimwear reg. 5.00 **2<sup>59</sup>**

short-sleeve knee-length Pajamas reg. 4.25 **2<sup>99</sup>**

short-sleeve Sport Shirts reg. 5.00 **3<sup>49</sup>**

Bermudas reg. 5. & 5.95 **3<sup>89</sup>**

entire stock Jac Shirts reg. 5. & 5.95 **3<sup>99</sup>**

short-sleeve Banlon Shirts reg. 5.95 **3<sup>99</sup>**

short-sleeve Dress Shirts reg. 4.25 ea. **4 for 12<sup>00</sup>**

NO LAY-A-WAYS . . . CHARGE IT!

## boys' dept.

Jac Shirts reg. 3. & 4. **1<sup>99</sup>**

Polo Shirts reg. 1.98 **1<sup>59</sup>** reg. 3.00 **1<sup>99</sup>**

Sport Shirts reg. 1.98 **1<sup>59</sup>** reg. 3.00 **1<sup>99</sup>**

reg. 4.00 **2<sup>99</sup>**

Swimwear reg. 4.00 **2<sup>49</sup>**

Stretch Dungarees reg. 5.00 **2<sup>99</sup>**

Denim Chinos reg. 5.00 **2<sup>99</sup>**

(STRETCH-TWILL)

Permit No. 10  
PAID  
U. S. POSTAGE  
Bulk Rate

