

# The Spotlight

VOL. XI, NO. 2

JANUARY 13, 1966

\$1.00 PER YEAR

10¢ A COPY



WALTER KINN of Colonial Acres, Glenmont, plays the new \$8,000 Allen organ which was Dedicated this Sunday at Bethlehem Lutheran Church on Elm Avenue. Actually, a triple dedication took place: the new Parsonage, the organ and a new Pulpit were dedicated to the Service of God on Sunday, January 9. The Pulpit was in memory of the Rev. J. F. Gassmann who served as pastor of Zion Lutheran Church in Westwood, New Jersey, for 48 years. He is the father of Pastor Paul Gassmann, Pastor of Bethlehem Lutheran Church.



BERTRAM E. KOHINKE, Supervisor of the Town of Bethlehem and a Director of the Bethlehem Historical Association, presents a gift to Mrs. Paul Dickinson, retiring Town Historian. Looking on are Mr. Dickinson and Mrs. William D. Bennett, the new Town Historian. The gift was presented at a tea held in honor of Mrs. Dickinson for her outstanding service to the community.



**NEW HOME:** Above is the new home of the Delmar Travel Agency which was formerly located at 750 Delaware Avenue in the Driftwood Building. New location is at 210 Delaware Avenue where the travel agency will now be joined by the Safety First Insurance Agency. At the new address, Walt and Doris Owens can handle all of your travel needs and Bob McNitt will be at the same address for insurance. The two businesses will hold an Open House Saturday, January 15.

## "Inherit the Wind"

The Slingerlands Players will offer a production of "Inherit the Wind", a drama, by Jerome Lawrence and Robert E. Lee, at the Bethlehem Central High School auditorium on Friday and Saturday evenings, January 21st and 22nd at 8:30 P. M.

The second presentation of Slingerlands' 1965-1966 season is under the directorial supervision of Ralph Smith, who will be remembered for his sensitive direction of last seasons production of "Five Finger

Exercise." Mr. Smith will be assisted by Dick Rosenberg. Featured members of the cast include many veteran Slingerlands performers. Among them are: Doug Marone as Drummond, Martin Barr as Brady, Richard Walsh as Cates, the schoolteacher, whose decision to include Darwin's Theory of Evolution in his teaching curriculum led to the now famous court case, Eileen Rasker as Rachel Brown, Harlan Wilbert as Reverend Brown and Syd Turner as Hornbeck, the reporter, a fictitious prototype of publisher H. L. Mencken. Drummond and Brady, of course, are thinly veiled characterizations of Clarence Darrow and William Jennings Bryan, opposing counsel in the actual Scopes' "Monkey Trial", which took place in Dayton, Tennessee during the scorching July of 1925.

Set design for "Inherit the Wind" is being done by a newcomer to The Players, MRS. VICKI WILSON. Mrs. Wilson was a highly successful commercial artist in New York City and has done work for both motion pictures and television. She and her husband, Keith, have recently located in Delmar and promise to be welcome additions to the Slingerlands Players organization.

"Inherit the Wind", with a cast of 35, is one of the more exacting productions to be undertaken by The Players. The third and final presentation of the 1965-1966 season will be George Bernard Shaw's, "Androcles and the Lion" to be produced in late April.

## Association Meeting

On Thursday, January 20th, at 8 P. M. the Town of Bethlehem Historical Association will hold a meeting at the headquarters of the Association, the Cedar Hill School Building, on Route 144, at Cedar Hill.

There will be a business meeting conducted by the President, Mr. J. Phillips Campbell. Mrs. William Waldbillig, Program Chairman, has announced that Mrs. Walter Houghtaling of Elsmere will bring a part of her antique doll collection to exhibit to the group. Mrs. Houghtaling has more than 60 antique dolls in her collection. Some dating back to the early 1800's.

There will be on display several of the very old and valuable wax-head type, as well as the better known china head or "Jenny Lind" type doll. Mrs. Houghtaling will also describe her collection and answer questions. Guests are invited to attend this meeting, as well as anyone who is interested in becoming a member of the Town of Bethlehem Historical Association.

## Pancakes

On January 15 Clarksville Grange #781 will sponsor a pancake Supper at the Grange hall, Delaware Turnpike, Clarksville. Tickets may be obtained at the door. Continuous serving from 5:00 P. M.



## NEW REDUCTIONS FROM STOCK

### CLOSING OUT

BERKSHIRE HOSE - Reg. \$1.35  
SALE: \$1.00 pr. - 3 for \$2.69

ULTRASOUS HOSE - Reg. \$1.65  
SALE: \$1.20 pr. - 3 for \$3.29

- ALL BELTS - ½ PRICE -
- ALL HATS - ½ PRICE -

### NOW 1/3 TO 1/2 OFF

ALL SALE JR. PETITE DRESSES

- ALL BOUTIQUES - ½ PRICE -
- BRAS (nude look) - ½ PRICE -

### NOW - 1/3 to 1/2 OFF

LARGE GROUP WINTER SWEATERS  
includes many Villagers, John Meyer

- SALE SLACKS - 1/3 to 1/2 OFF -

### PLUS

CONTINUED CLEARANCE - STORE-WIDE  
BIG SAVINGS IN EVERY DEPARTMENT!

DRESSES	SHIRTS	N. GOWNS
COATS	CAR-COATS	BLOUSES
SUITS	SKI-WEAR	SLIPS
GLOVES	ROBES	SCARVES
SKIRTS	P. J.'s	HATS
HAND BAGS		

AND  
A HUGE SALE IN THE VILLAGE SHOP

Store Hours: Open 10 A.M.

Evg's. Wed., Thurs., Fri.

## Pancake Breakfast

The Walther League of the Bethlehem Lutheran Church, Elm Avenue, Delmar, will serve a Pancake Breakfast on Saturday, January 22, from 7 to 10:30 A. M. Tickets may be purchased at the door.

In charge of the breakfast are: George Filkins, Stephen Marshall and Deborah Bowersox.

Proceeds will go toward the Church building fund.

## Tea

The Capital District Alumnae Chapter, College of Mt. St. Vincent, will hold its annual Scholar-

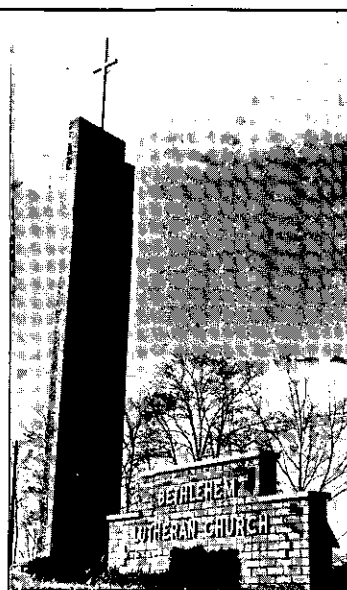
ship Tea on Sunday, January 16, beginning at 1:30 P. M., at the home of Miss Rita Delapp, 32 Fernbank Avenue, Delmar.

Mrs. Francis L. Barclay, 6 Greenwood Lane, Slingerlands, Chairman of the Scholarship Committee, has announced that candidates are competing for a four-year full tuition scholarship to Mt. St. Vincent.

Miss Marion E. Martin, 110 Fernbank Avenue, Delmar, is President of the Capital District Chapter.

## Drag Races!

This Sunday, January 16, from 10 A. M. to 5 P. M., Albany Dodge Showrooms at 949 Central Avenue, Albany, will be the



Church Address  
85 Elm Ave., Delmar

Parsonage: 111 Elm Ave.,  
Delmar

Telephone: 439-6217

Rev. Paul H. Gassmann  
Pastor

### NEW SERVICE SCHEDULE

9:30 A.M. - Church and

Sunday School

11:00 A.M. - 2nd Service of  
Worship

### PANCAKE BREAKFAST

Saturday - January 22nd

From 7:00 to 10:30 A.M.

Adults \$1.25 Children 75¢

## HAT CLEARANCE



Anne's  
Hat Box  
Accessories

ALL FALL AND WINTER  
HATS REDUCED

ANNE MC GOEY, 406 KENWOOD AVENUE, DELMAR N.Y.  
HOURS: 10-5:30, FRI. 10-9:00



scene of Albany's first miniature Drag Racing Contest. This thrilling extravaganza will be presented at Albany Dodge by Hobbytown Raceway of Albany.

Admission is free. Trophies and prizes will be awarded. You can enter your car now by getting a registration form from Albany Dodge or Hobbytown.

You'll see gas, sports cars, modified sports, dragsters and many others, so plan to visit Albany Dodge this weekend.



### WITH THE GIRL SCOUTS

Jr. Troop #42, under leadership of Mrs. Stephen Walley, and assistant leader, Mrs. Helen Rhodes, made 40 'Winter Bouquet' place cards out of weeds and acorns for the Marcy Nursing Home in East Berne . . . The troop also had a 'Progressive Luncheon' during the holiday vacation — this activity permitted the group to visit each other's homes to see Christmas gifts and decorations.

...

On Friday, January 28, at 7:30 P. M., Brownie Troop #106 will conduct its annual Invest-

iture Service. They will be investing 6 girls this year. The event will take place in the downstairs meeting room of the Delmar branch of the National Commercial Bank. All parents and friends are cordially invited to attend. The troop is under the leadership of Mrs. Lawrence Mead and assistant leader, Mrs. Henry Kuntz.

### New Trustee

John E. Vroman, Vice President of Home Savings Bank, was elected a Trustee of Home Savings Bank at the annual meeting of the Board, Monday, January 10. He fills the vacancy created by the retirement of James G. Tebbutt.

One of the best known and most active bank executives in the Albany area, Mr. Vroman joined Home Savings Bank as a clerk August 1, 1925 and served, successively as Teller, General Bookkeeper and Chief Clerk. In 1963 at the age of 25 he was elected an Assistant Treasurer, at that time, the youngest elected officer of any of the banks in Albany.

He was elected a Vice-President February 13, 1951.

A native of Albany, he was graduated from St. Patrick's School, Christian Brothers Aca-

# Helena Rubinstein's Once-A-Year SALE

*Ultra Feminine*

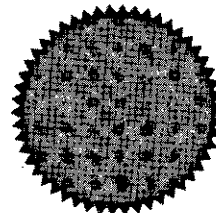
Estrogenic Hormone Cream  
with Progesterone

Helena Rubinstein

SAVE 3<sup>00</sup>

*Ultra Feminine*

Face Cream regular 7<sup>50</sup> size, only 4<sup>50</sup>



Guaranteed to help  
you look younger  
or your money back!

SAVE 1<sup>00</sup>

Young Touch  
Hand Lotion

2<sup>75</sup> value, only 1<sup>75</sup>

Helps smooth away  
lines, roughness, helps  
remove discolorations.



Limited time only

**L. J. MULLEN PHARMACY**

256 Delaware Avenue

Elsmere, New York

HE 9-2413 - PHONES - HE 9-5411



**HE 9-4444**

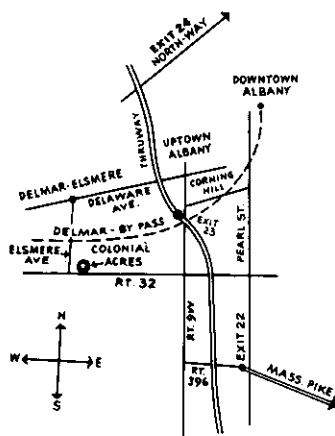
PICK-UP AND DELIVERY

# LAST SUNDAY OVER 905 PEOPLE VISITED Colonial Acres, THE ONLY COMMUNITY OF AUTHENTICALLY DESIGNED EARLY AMERICAN HOMES IN THE NORTHEAST...



Last summer over  
1,000,000 people saw  
Colonial Acres in  
**HOUSE BEAUTIFUL**  
Magazine . . .

*Why don't YOU  
see Colonial Acres*



#### Colonial Acres

- 12 minutes from downtown Albany
- 5 minutes from Massachusetts Turnpike
- 4 minutes from Delmar-Elsmere
- 3 minutes from Thruway Exit 23
- 2 minutes from Delmar Bypass

Just 12 minutes from downtown Albany you'll find the warmth and charm of colonial styling combined with the conveniences of expertly built new homes. These authentic recreations of 17th and 18th century architecture have been adapted to 20th century family living and placed in an atmosphere faithful to the traditional feeling of early America.

Colonial Acres' homes feature great, luxurious fireplaces . . . pegged, random selection wide plank flooring . . . hand rubbed copper light fixtures . . . wrought iron door latches . . . small paned windows . . . all the details that maintain colonial authenticity.

**OPEN HOUSE      COLONIAL ACRES**  
**2-5      Sunday, Jan. 16, 1966**

Come see the beautiful landscaped grounds, including rough wooded areas, at Colonial Acres. Don't miss the 9 hole golf course or the 30' x 60' community swimming pool, open to Colonial Acres' residents only. Find out what family living in the comfortable Colonial Acres community is like.

SEE 12 FULL PAGES ON COLONIAL ACRES IN RECENT ISSUE OF HOUSE BEAUTIFUL

*De L. Palmer, Inc., Realtors* **Colonial Acres**

A GLENMONT DEVELOPMENT CORP. COMMUNITY • GLENMONT, NEW YORK • HE 4-0181

demy; the American Institute of Banking, and the Savings Banks Management Course at Dartmouth College.

He is a member of the Albany Kiwanis Club, Albany Area Chamber of Commerce, Fr. Morley Council, Knights of Columbus, Colonie, and is a Trustee of Our Lady of Mercy Church, Colonie. He is Past President and Life Member of the American Institute of Banking and a charter member and Past President of the Savings Banks Officers Forum Group III.

The Board re-elected the following officers: Harry D. Yates, President; Edward S. Poole, Secretary; Howard E. Archer, Executive Vice President; John E. Vroman, Vice President; Joseph A. Hughes, Vice President and Manager of the Colonie - Wolf Road Office; Andrew M. Sneddon, Assistant Vice-Presi-

dent; Donald B. Tenney, Assistant Vice President; George L. Adams, Assistant Vice-President; Charles B. Kavanaugh, Treasurer; William M. Barth, Auditor; and Raymond A. Griffin Jr., Assistant Treasurer.

The Members of the Board of Trustees are: Howard E. Archer, William Barnet, II, Storrs M. Bishop, Hugh M. Flick, Marshall S. Hannock, Jacob J. Herzog, Herbert A. Jones, Edward S. Poole, William L. Thompson, Jr., Albert Vander Veer, II, John E. Vroman, Gerald W. Waldbillig, Thomas M. Whalen, Jr. and Harry D. Yates.

## Earnings Up

Net operating earnings in 1965 for National Commercial Bank and Trust Company increased 16.5% over the previous

# IT'S HERE! WHAT?



## The Third Annual Parent-Offspring Bowling Tournament

A family TOURNAMENT for  
Mother & Daughter or Son,  
Father & Son or Daughter.

## 75% Handicap

Trophies Awarded to  
1 every 10 Entries

Saturday, January 15th & 22nd

## DEL LANES - ELSMERE

For Information  
and Reservations  
CALL  
439-2224

"Family Fun For Everyone"

## January CLEARANCE SALE

### 20% Discount

### SUITS AND SPORTCOATS

SWEATERS      SPORT SHIRTS      GLOVES

WINTER JACKETS      SUBURBAN COAT

SPECIAL

### 100% COTTON CHINO PANTS

### 2 pairs \$5.95

(PERMANENT PRESS - NOT INCLUDED)

EXTRA SPECIAL

MEN'S SHIRTS

### OXFORD BUTTON-DOWN STRIPE

### TAB COLLAR STRIPE      each \$3.00

Parking at Rear  
of Store

## Cadd

four corner shop  
men      boys

## 368 Delaware Ave

## Delmar



SLINGERLAND'S PLAYERS  
PRESENT

# Inherit the Wind

A DRAMA BY  
JEROME LAWRENCE  
& ROBERT E. LEE  
DIRECTED BY RALPH SMITH

JAN.  
21-22  
1966



BETHLEHEM CENTRAL HIGH SCHOOL  
DELAWARE AVE. - DELMAR 8:40 PM  
ADMISSION \$2.00 STUDENTS \$1.00



# Freikofer's

## BATTER WHIPPED SUNBEAM BREAD

COMPARE . . . and see the difference!  
**Batter Whipped! No Holes! No Streaks!**  
**Delicious Bread, Rolls & Cake!**  
**DAILY HOME DELIVERY**  
**Phone HO 3-2221**

FEATURE OF THE WEEK

**FAMILY COFFEE CAKE** . . . . . 98¢  
 Every Fri. and Sat. - Please all the kids and still have enough left for Mom and Dad!

FILL THE COOKIE JAR

Chocolate Chips, Brownies, Peanut Butter Chips, Pecan Fruit, Sugar, Fruit, Black Eyed Susans

### THURSDAY Jan. 13th

- ☐ **STRAWBERRY RHUBARB PIE** . . . . . 69¢
- ☐ Chocolate Ring . . . . . 69¢
- ☐ Chocolate Fudge Sheet . . . . . 59¢
- ☐ Chocolate Iced Angel . . . . . 59¢
- ☐ Blueberry Muffins . . . . . 39¢
- ☐ Cinnamon Raisin Bread . . . . . 35¢
- ☐ ● King Size Bread . . . . . 31¢

For Your Birthday—  
 Birthday Cakes Inscribed  
 and Decorated to your  
 Desires  
**\$1.98 up**

### FRIDAY Jan. 14th

- ☐ **CUSTARD PIE** . . . . . 69¢
- ☐ Bake n' Serve Bread . . . . . 39¢
- ☐ Orange Coconut Buns . . . . . 39¢
- ☐ Date Nut Loaf . . . . . 49¢
- ☐ Gold Sheet . . . . . 59¢
- ☐ Gold Cream Cups . . . . . 36¢
- ☐ Bronx Rye . . . . . 29¢
- ☐ ● Old Fashioned Bread . . . . . 29¢

For Your Shower—  
 Bridal or Baby  
 Shower Cakes Inscribed  
**\$3.80 up**

### SATURDAY Jan. 15th

- ☐ **CHOCOLATE CREAM PIE** . . . . . 79¢
- ☐ Chocolate Iced Gold Layer . . . . . 79¢
- ☐ Honey Pecan Ring . . . . . 59¢
- ☐ Chocolate Eclairs . . . . . 59¢
- ☐ Marble Sheet Cake . . . . . 59¢
- ☐ ● Hot Dog Rolls . . . . . 29¢
- ☐ Sliced Pumpkin Nickel . . . . . 29¢
- ☐ ● Sunbeam Bread . . . . . 26¢

Special Occasions  
 First Communion, Confirmation  
 Christening, Graduation  
**\$3.80 up**

### MONDAY Jan. 17th

- ☐ **RED RASPBERRY PIE** . . . . . 69¢
- ☐ Lemon Buns . . . . . 39¢
- ☐ Cinnamon Crumb Cake . . . . . 44¢
- ☐ Round Angel Food . . . . . 39¢
- ☐ Whole Wheat Muffins . . . . . 39¢
- ☐ Chocolate Coverette Cups . . . . . 39¢
- ☐ Glazed Donuts . . . . . 39¢
- ☐ ● Dark Diet Bread . . . . . 30¢

All Purpose Cake  
 Cake of the Month  
 Available Anytime on  
 order . . \$2.69

### TUESDAY Jan. 18th

- ☐ **CHERRY PIE** . . . . . 69¢
- ☐ Louisiana Ring . . . . . 69¢
- ☐ Cinnamon Buns . . . . . 39¢
- ☐ Banana Sheet Cake . . . . . 59¢
- ☐ Cream Puffs . . . . . 59¢
- ☐ Assorted Cup Cakes . . . . . 39¢
- ☐ Jelly Donuts . . . . . 39¢
- ☐ ● Split-top Italian . . . . . 27¢

Wedding Cakes  
 For that Most Important Event.  
 Select from our Large Variety.  
 All Sizes Available.

# Freikofer's

● Indicates items available every day.  
 The above is not a complete list of available items. For further information ask your Routeman or call the Bakery.

**WATCH "FREDDIE FREIHOFFER"**  
**WRGB WEEKDAYS 4:45 - 5:00**



year to \$3,753,508. Lester W. Herzog, Jr., President, announced today that this amounted to \$3.18 per share based on a weighted average of the number of shares outstanding during the year.

Total deposits of \$524,894,046 at year end 1965 showed an increase of 20% over year of 1964.

Total resources of \$589,775,518 represent a growth of 20% over 1964.

The Trust Division reported assets of over \$230,000,000 not included in bank resources, which is a new record high.

## Dentists' School

Dentists from Eastern New York, Massachusetts and Vermont will converge on the Holiday Inn, Albany-Schenectady Road, January 15, for a day of lectures and discussions devoted to "The Versatile World of Pins."

This will be the third of the season's five post graduate conferences arranged by the Third and Fourth District Dental Societies of New York State for the continuing education of dental practitioners.

Dr. Gerard L. Courtade of New York City, described by the Third District Post-Graduate Conference Committee as one of dentistry's most capable clinicians, will conduct the one-day course. Dr. Courtade's lectures will consider the wide application of pins in restorative dentistry. Dr. Robert C. King of Delmar, committee chairman, said "the material to be presented next Saturday has been acclaimed throughout the world as the finest information available in pin techniques."

Keeping abreast of new developments in dental research and techniques in the profession, is the purpose of the seminars headed by recognized authorities in the various specialties, it was explained by Albany and Kingston dentists holding office in the Society.

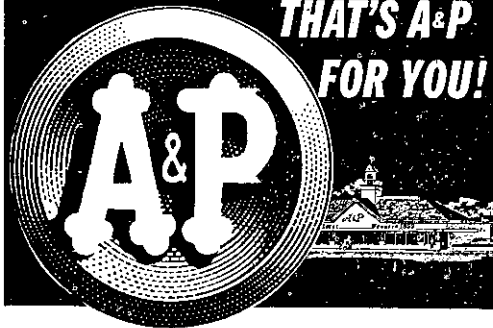
The next two conferences in the current season are scheduled for February and March.



YOU CAN RELY ON ANYTHING YOU BUY—  
ANYTIME YOU BUY AT A&P!

**DEPENDABLE**

THAT'S A&P  
FOR YOU!

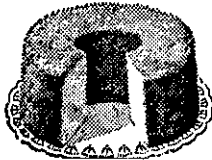


THE GIFTS YOU GET PROVE IT!  
**PLAID STAMPS**  
ARE SURE WORTH SAVING!

**Jane Parker Special!**

**ANGEL  
FOOD**

1 LB 1 OZ RING **49<sup>C</sup>**



JANE PARKER, REGULAR 55c  
**Cherry Pie** 8-INCH 1 LB 8 OZ **49<sup>C</sup>**

JANE PARKER WHOLE OR CRACKED **SAVE 9c**  
**Wheat Bread** 2 LVS **49<sup>C</sup>**

JANE PARKER RASPBERRY WHIRL  
**Coffee Cake** 1 LB PKG **59<sup>C</sup>**

JANE PARKER, FRENCH OR POPPYSEED  
**Rolls** BROWN 'N SERVE 2 PKGS OF 10 **49<sup>C</sup>**

A&P - - IN SHELL

**Roasted Peanuts**

8 OZ PKG 12 OZ PKG 1 LB PKG  
**25<sup>C</sup> 35<sup>C</sup> 45<sup>C</sup>**

**DOUBLE STAMPS Wednesday!**

# RIB ROAST

SUPER-RIGHT QUALITY HEAVY STEER BEEF  
7-INCH CUT, REGULAR TRIM, 3rd TO 6th RIB

(FIRST 2-RIBS LB 99<sup>C</sup>) LB **79<sup>C</sup>**

## FRESH PORK

SKINLESS AND SHANKLESS —  
WHOLE OR EITHER HALF

**FRESH HAMS** LB 89<sup>C</sup>

**Spare Ribs** FRESH LB 79<sup>C</sup>

**Fresh Picnics** LB 59<sup>C</sup>

**Pork Butts** FRESH LB 79<sup>C</sup>

**Pork Hocks** FRESH LB 59<sup>C</sup>

**Pigs Feet** FRESH LB 29<sup>C</sup>



CAP'N JOHN'S  
**SHRIMP  
COCKTAIL**  
3 4 OZ JARS 95<sup>C</sup>

**Cod Portions** BREADED 2 LB PKG 99<sup>C</sup>  
**Flounder** BREADED PORTIONS 2 LB PKG 99<sup>C</sup>

SPECIAL FEATURE!  
MEATY, COOKED, ALASKAN

**King Crab Claws**

LIMITED TIME  
ONLY, STOCK UP LB 79<sup>C</sup>

**Lowest  
Price Ever!**  
A&P BRAND

**Instant  
Coffee**

**Save UP TO 46<sup>C</sup>**  
Over other brands  
of comparable quality  
10 OZ JAR

**99<sup>C</sup>**  
6 OZ JAR 69<sup>C</sup>

NABISCO  
**Cream Sandwich** 1 LB OREO PKG 45<sup>C</sup>  
SUNSHINE  
**Krispy Crackers** 1 LB PKG 33<sup>C</sup>  
KEEBLER  
**Penguin Cookies** 1 LB PKG 45<sup>C</sup>

**CHUCK ROAST** BLOCK STYLE LB 49<sup>C</sup>

**BONELESS CHUCK** LB 75<sup>C</sup>

**CHUCK STEAK** CENTER CUT LB 59<sup>C</sup>

**RIB STEAK** 7-INCH CUT TENDER & JUICY LB 89<sup>C</sup>

**Beef Liver** CENTER CUTS LB 49<sup>C</sup>

**Lamb Liver** SLICED LB 55<sup>C</sup>

**Ox Tails** FOR SOUP LB 25<sup>C</sup>

**Chicken Breasts** Fresh USDA Inspected Lb 69<sup>C</sup>

**Chicken Legs** FRESH USDA Inspected Lb 59<sup>C</sup>

**Dried Beef** SUPER- 4 OZ PKG 39<sup>C</sup>

**Canned Ham** Planrose 2 LB Imported TIN 2.69

**Chuck Roast** BLADE CUT LB 59<sup>C</sup>

**Chuck** Ground pkgs of 3 lbs or more Lesser Quantities lb 79<sup>C</sup> LB 77<sup>C</sup>

**Newport Roast** FROM RIB LB 99<sup>C</sup>

**Plate Beef** BONE IN LB 29<sup>C</sup>

**Oven Roast** BONELESS SHOULDER LB 89<sup>C</sup>

**Stew Beef** LEAN BONELESS LB 79<sup>C</sup>

**Short Ribs of Beef** LB 49<sup>C</sup>

**Blade Steak** Boneless From Chuck LB 99<sup>C</sup>

**Fresh Brisket** STRAIGHT CUT LB 99<sup>C</sup>

**Fresh Brisket** FRONT CUT LB 79<sup>C</sup>

**Pot Roast** CALIF. CUT From Chuck LB 65<sup>C</sup>

**Calif. Steak** FROM CHUCK LB 75<sup>C</sup>

**Braising Beef** FROM CHUCK LB 89<sup>C</sup>

**Beef Kidneys** LB 29<sup>C</sup>

**Fillet Steak** BONELESS FROM CHUCK LB 85<sup>C</sup>

**Smoked Fillets** LB 65<sup>C</sup>

**Fried Ocean Perch** LB 59<sup>C</sup>

**Franks** SUPER-RIGHT ALL MEAT SKINLESS LB 69<sup>C</sup>

**Sausage Meat** SUPER-RIGHT LB 65<sup>C</sup>

**Salami** SUPER-RIGHT COOKED SLICED 8 OZ PKG 39<sup>C</sup>

**Variety Loaf** SUPER- 12 OZ PKG 65<sup>C</sup>

**Cornish Hens** 18 OZ SIZE LB 65<sup>C</sup>

**Fancy Scallops** LB 79<sup>C</sup>

FANCY NEW ZEALAND **LAMB SALE!**

**SHOULDER ROAST** SQUARE CUT LB 39<sup>C</sup>

**COMBINATION** CHOPS AND STEW LAMB LB 35<sup>C</sup>

**SHOULDER CHOPS** LB 59<sup>C</sup>

NUTRITIOUS DELICIOUS

**Bananas** 2 LBS 25<sup>C</sup>

LARGE INDIAN RIVER

**Grapefruit** 4 FOR 49<sup>C</sup>

LARGE FLORIDA  
**TEMPLE ORANGES** 10 for 69<sup>C</sup>

LARGE SWEET  
**TANGERINES** DOZ 49<sup>C</sup>

U.S. NO. 1  
**SWEET POTATOES** 3 LBS 29<sup>C</sup>

U.S. NO. 1  
**YELLOW ONIONS** 5 LB BAG 29<sup>C</sup>

PLANTATION — 5 LB BAG 49<sup>C</sup> — 10 LB BAG 89<sup>C</sup>

**Wild Bird Food** 25 LB BAG 1.89

BIXMIX — CORN MUFFIN, FLAPSTAX, CORNBREAD

**Martha White Mixes** PKG 10<sup>C</sup>

# SMOKE SALE!



**ORGANS — PIANOS**

**— VOX —**

**AMPLIFIERS — GUITARS**



**DRASTIC REDUCTIONS**

**WESTGATE PIANO & ORGAN CENTER**

WESTGATE SHOPPING CENTER - ALBANY, N.Y.  
Eves. till 9 IV 2-4223

**DELMAR DEPARTMENT  
STORE**  
4 CORNERS

**Pre-Inventory  
SALE**



**Reductions of**

**20 to 50%**

**on MEN'S, WOMEN'S &  
CHILDREN'S CLOTHING**



Open Wed., Thurs., Fri. — 10 A.M. to 9 P.M.  
Open Mon., Tues., Sat. — 10 A.M. to 6 P.M.

## Family Tournament

Del Lanes is again offering to the bowling families in the area its Third Annual Parent-Offspring Tournament. This is a family tournament and the whole family may join in the fun providing they are sanctioned league bowlers.

Each year the interest and enthusiasm becomes greater and the competition keener for the beautiful trophies. These

trophies will be on display during the tournament.

There will be divisions for Mother & Daughter, Mother & Son, Father & Daughter, Father & Son and Adult & Adult. These divisions will allow any member of the family, regardless of age (8-80) to join in with a partner and, if you average less than 200, you will receive a handicap.

I've got my partner for this tournament! Why not get yours, and we will see each other on Saturday, January 15 or 22 at

**OPEN HOUSE**  
**SATURDAY, JANUARY 15, 1966**  
**2 to 4 P.M.**

*Drop in and have Coffee and Cake*

**SAFETY FIRST INSURANCE AGENCY**  
**DELMAR TRAVEL AGENCY**

210 Delaware Avenue, Delmar, N.Y.  
HE 9-5624

## PICK AND PAW SALE

**ODDS AND ENDS**

**NUTS — BOLTS — SCREWS**

**DRASTICALLY REDUCED**

**— This Week's Special —**

• CAR WISK

Reg. 89¢

**SNOW SCRAPER**

**48¢**

**CLOSE-OUT**

• MASONITE

Reg. \$1.98

**TIDY BOARD**

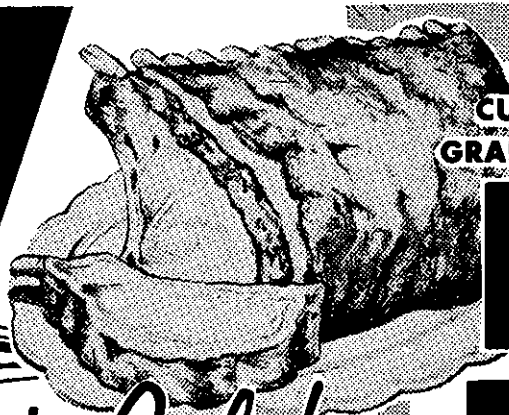
**\$1**



**DELMAR LUMBER  
& BUILDERS SUPPLY inc**

**340 DELAWARE Ave • Phone HE 9-9968**





CUT FROM TENDER YOUNG  
GRAIN FED WESTERN PORKERS

# PORK LOINS

RIB PORTION

lb **48¢**

RIB HALF

lb **58¢**

LOIN HALF

lb **68¢**



TOP QUALITY  
READY TO COOK

**FOWL** <sup>WHOLE</sup> **29¢**

FOR FRICASSE,  
STEW OR BOILING

<sup>CUT UP</sup> **33¢**

## Del Monte Sale!

SWEET, TENDER <b>DEL MONTE PEAS</b>	2 1 LB. 1 OZ. CANS	<b>39¢</b>
WHOLE KERNEL OR CREAM STYLE <b>DEL MONTE CORN</b>	2 1 LB. CANS	<b>39¢</b>
PINEAPPLE-GRAPEFRUIT <b>DEL MONTE DRINK</b>	4 1 QT. 14 OZ. CANS	<b>\$1.00</b>
TASTY <b>DEL MONTE CATSUP</b>	2 14 OZ. BTLS.	<b>39¢</b>
DEL MONTE <b>WHOLE TOMATOES</b>	2 1 LB. CANS	<b>59¢</b>
DEL MONTE <b>SLICED PINEAPPLE</b>	4 15 1/4 OZ. CANS	<b>\$1.00</b>
DEL MONTE <b>TOMATO JUICE</b>	3 1 QT. 14 OZ. CANS	<b>89¢</b>



RED, RIPE

# TOMATOES

cello  
ctn.

# 19¢

CLEAN-WASHED

# SPINACH

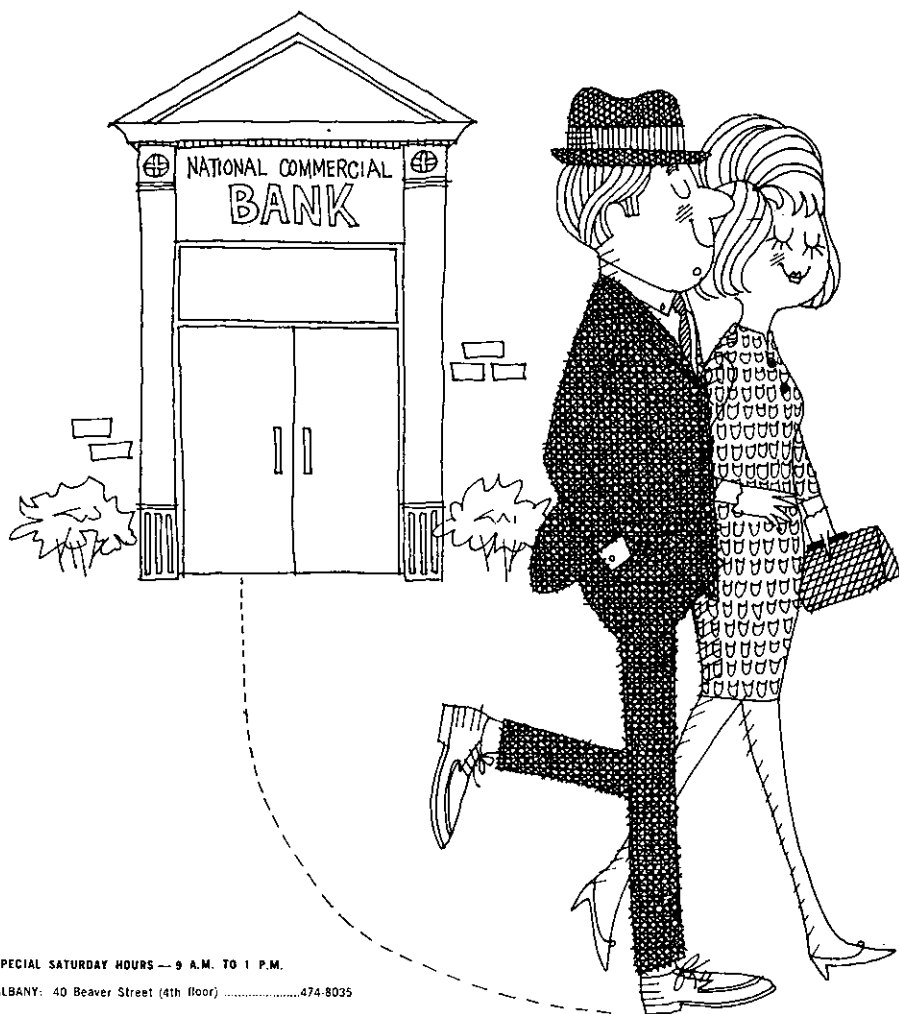
10-oz.  
cello  
pkg.

# 19¢

WE RESERVE THE RIGHT TO LIMIT QUANTITIES  
WE ARE NOT RESPONSIBLE FOR TYPOGRAPHICAL ERRORS  
PRICES AND OFFERS EFFECTIVE THRU SATURDAY, JANUARY 15th

# Best way to borrow money...

National Commercial borrowers say it's the best because our rates are low and life insurance is included at no added cost. Everyone who applies for a loan agrees that our service is pleasant and prompt. You can even 'phone for your loan and come in only once . . . to pick up your money. So, when you need money for any good purpose, borrow the best way . . . Stop in or 'phone NCB.



SPECIAL SATURDAY HOURS — 9 A.M. TO 1 P.M.

ALBANY: 40 Beaver Street (4th floor) .....474-8035

DELMAR

BECKERS CORNERS  
Mondays, Wednesdays  
9 to 11 a.m.

BERNE

Tuesdays, Fridays  
3 to 5 p.m.

ELSMERE

WESTERLO  
Mondays, Wednesdays  
Noon to 2 p.m.



NATIONAL  
COMMERCIAL BANK  
AND TRUST COMPANY

MEMBER FEDERAL DEPOSIT INSURANCE CORPORATION

FULL SERVICE BANKING through 49 offices in Northeastern New York State

the Del Lanes Parent-Offspring Tournament.

For further information and reservations, call Del Lanes in Elsmere at 439-2224.

## Wins Award

Rudolph H. Koch, Jr. has won special recognition at the Albany branch office of Connecticut General Life Insurance Company, John W. Coote, CLU manager, has announced.

Mr. Koch has been named to the company's Vice President's Club for outstanding



R. H. Koch

agents. Membership in the prestige organization is awarded to company representatives who meet high standards in service to clients and in sales performance.

Mr. Koch is a member of the Albany Association of Life Underwriters. He is married to the former Marilyn Squier of Summit, New Jersey. They have two children and live in Delmar.



Spotlight Classifieds  
Tell The World!!!

**FOWLER'S**  
Liquor Store

See ERNIE or GEORGE  
for BETTER SPIRITS



Elsmere - at - the - Light  
Parking right in front of store.  
HE 9-2613 "We deliver."

Chilled, ready-to-serve  
WINES & CHAMPAGNES

## Swoboda Here

Ron Swoboda, outfielder of the New York Mets, will be the principal speaker at this year's annual Sports Night of St. Margaret Marys' to be held January 20 at McKown's Grove, Albany.

Others to speak at the affair will be Joe Robelotto, Secretary and Treasurer of the Albany Bowling Association, president elect of the New York State

Bowling Association and Principal of the Giffen Memorial School, also Siena's Basketball Coach, Tom Hannon. Bill Edwardson of station WGY will be Master of Ceremonies.

The affair is open to the public. Tickets may be purchased at the door the night of the affair, or may be purchased from one of the members of the committee headed by Bill Davenport.

Sick of strong drink?

Try a mild one — Try a Wine

**MAXIM-VINCENT**

**ROSÉ**

**\$1.19** 5th

**ELSMERE WINE & LIQUORS**

**222 DELAWARE AVE., DELMAR**

Phone 439-9229

**FREE DELIVERY**

Open Daily 9 a.m.

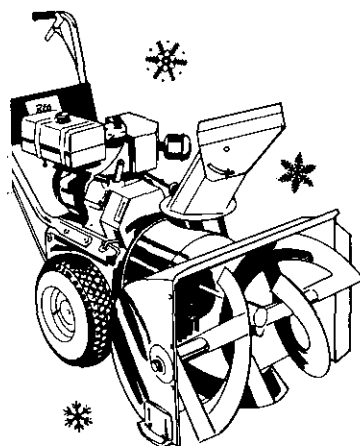
"As near as your phone"

Free Gift Wrapping

# CLEARANCE SALE

## 20% OFF

### ALL SNOWBLOWERS



**Ariens**

**Reo**

**Sunbeam Electric**

**WHILE THEY LAST!!**

"We Service what we sell"

## HILCHIE'S HARDWARE, Inc.

Cor. Delaware & Elsmere Ave., Elsmere

**439-9943**



*The finest Meat you can buy!*

U.S. CHOICE

# LONDON BROIL



(Better trim — better value)

lb.

## 98¢

### THIS WEEK'S SPOTLIGHT BONUS ITEMS

These are IN ADDITION to our regular ad of specials in the Albany Papers

WHILE THEY LAST! COLONIAL

# SPAGHETTI SAUCE

16 oz. jar

## 39¢

(Buy one — get one FREE) (Limit: One case)

CARNATION EVAPORATED

# MILK

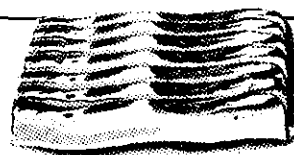
2 for **29¢**

tall can

for

SWIFT'S PREMIUM EXTRA FANCY, SLICED

# BACON



**89¢**

lb.



It's a thrifty consumer who shops for sheets, pillowcases, and towels when the stores feature white sales. What to consider when shopping for these household items will be discussed on Table Talk over Channel 13, Wednesday, January 19 at 8:00 A. M.

Miss Ada Shinabarger, home economist with the Washington County Cooperative Extension Service, and Mrs. Karen Hull, hostess of Table Talk, will show how to judge fabric quality and quality of workmanship in household textiles. Information about the newer cotton blends and synthetic fiber sheets and pillowcases as well as muslin

and percale will be included. Viewers will also learn about the elasticized contour sheets and the latest in terry towels.

Tune in to the Cooperative Extension Service program, Table Talk, Channel 13 at 8:00 A. M., Wednesday, January 19 to learn about some of the new developments in sheets, pillowcases, and terry towels.

Note that Table Talk has been scheduled one half hour later in the morning. Starting January 19, the new time will be from 8:00 A. M. until 8:30 A. M. every Wednesday morning. This later time should be more convenient for busy viewers.

## Benefit Showing

Several residents of the Tri-Village area are helping to sponsor a benefit performance of "The Greatest Story Ever Told," which will be held for the Building Fund of the Church of Jesus Christ of Latter-day Saints (Mormon Church) on Thursday, Jan-

nands Road, in the spring.

This movie, featuring 20 well-known stars, was filmed in Southern Utah. Mrs. George F. Swenson, 11 Gardner Terrace, chairman of the local ticket drive, saw the production in Cinerama on a wide screen while on a recent trip to Utah, and reports that the colored rock formations, silvery expanses of

pleased with the portrayal of the life of the Savior and felt the production was reverently and inspiringly done.

Tickets are \$4 for general admission and \$5 for the reserved section, and this contribution is tax deductible. Telephone orders and personal delivery of tickets will be made by Dr. and Mrs. Swenson (439-9674); Mr. and Mrs. Robert DeRuyter, 1509 New Scotland, Slingerlands (439-1930); Prof. and Mrs. Hans Pohlsander, 14 Ridge Road, Delmar (439-5041); and Mrs. Bertha Pangburn, 15 Elm Street, Delmar (HE 9-3940).

If you plan to see this long-awaited production, they will appreciate your attendance on this night.

**CLASSIQUE DANCING SCHOOL**  
154A Delaware Avenue  
CHILDREN AND ADULTS  
PRIVATE OR GROUPS  
All Types of Dancing and  
Body Conditioning  
HE 9-3331 Bagho Follett

## Historian To Speak

Mrs. William D. Bennett newly appointed historian of the Town of Bethlehem, will speak and show colored slides of "Early Dutch Homes of the Bethlehem Area," in the Delmar Library

on January 18 at 10 A. M. The program is sponsored by the Literature Department of the Delmar Progress Club. All members are invited. Coffee at 9:30. Hostesses are Mrs. Murray O. Klingaman and Mrs. Kenneth L. Clark.

Subscribe to the Spotlight

**We'll make your motor sing**



- \* Engine Tune-up
- \* Front End Alignment
- \* Automatic Transmission Service
- \* Modern Equipment
- \* Skilled Mechanics

**BAILEY'S GARAGE**

Phone Delmar HE 9-1446  
Oakwood Rd., Elsmere



They plan to begin construction of a new chapel off Route 9 in Loudonville, near the Me-

shown add much to the fast-moving, dramatic story. She was



## KLERSEY BUILDING CORPORATION

Offers a choice of a new home of prestige  
**or** designer/decorator service to restyle  
your present home.

KLERSEY BUILDING CORPORATION  
AND  
GENERAL ALTERATION DIVISION

Phone for Appointment  
439-4606 439-9769

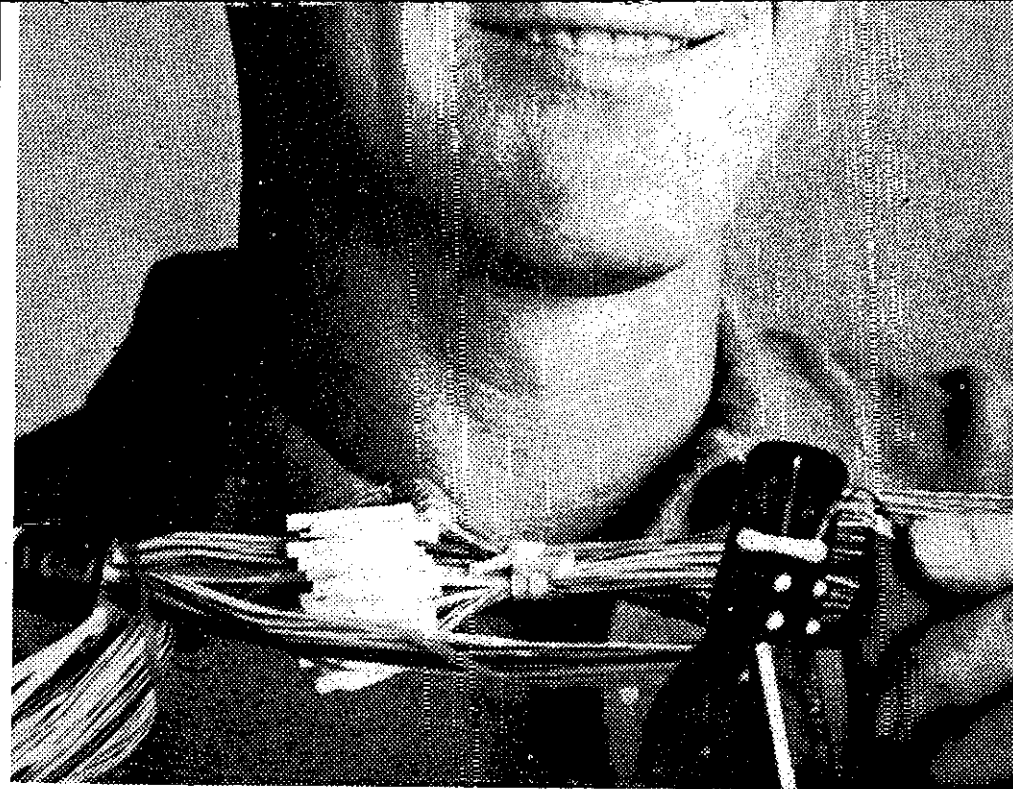
**sale**  
**20% to 50% off**  
on

**Winter Stock**

Come early for best  
selection from our famous  
**\$10 Rack**

**slimline  
fashions**

Loudon Shopping Center, Albany, N. Y.  
Phone HO 2-2354



Cable Splicer Erling Andersen enjoys bringing people together.

***"I guess you can say I'm an expert  
at bringing people together!"***

"It's a good feeling to be part of a growing business, especially one that helps bring more people together. And there's plenty of excitement in my job, too. Especially when some disaster hits, and we have to work around the clock to get the cables back in shape. But what I enjoy most is splicing in cables for new service. I know I'm adding to the number of people who can be reached by phone. And that makes everyone's phone more useful."

Telephone people — the heart of good telephone service



**New York Telephone**  
Part of the Nationwide Bell System

## KERR'S ESSO SERVICE

190 Delaware Ave., Delmar  
(next to Delaware Plaza)  
24-Hour Emergency Service  
HE 9-9891 or HE 9-5548  
Day Night

## Book Display

Starting January 10th the children of the Delmar area will have an opportunity to look over the many paperback books now printed especially for them. Mrs. Ann Parrot, children's librarian, is most enthusiastic about the variety of subject and title mater-

ial covered in this inexpensive medium.

No child, pre-School or young adult, need go without owning a loved book because of cost.

The paperback book is within the price range of a young collector. About three hundred of these books will be on exhibit for the next two weeks. Unfor-

tunately they will be on display only. However, they may be purchased wherever other paperbacks are sold.

This is an excellent chance for parents as well as their small fry to look over the wealth of material presented through the world of the paperback.

## A New Year's Resolution from the Delmar Library

New Year's resolutions are fine; almost everyone makes them. As the old year draws to a close one is apt to review those things done or undone. With the start of a new year one's thoughts must turn to the future. We ask for "ears to hear, eyes to see and the will to do."

The Delmar Public Library is no exception. Mrs. Barbara R. Rau, head librarian, takes stock. Revisions, plans, innovations, all sorts of things are forth-coming. The one big difference is that she does not wait for the start of a new year; she carries on daily.

The whole library staff is free to contribute ideas. Each one is anxious to give the best help she can and knows that the community expects the best in every way. The many activities that go on are almost beyond belief.

# C. L. SUMMER & CO. REMOVAL SALE

## Shop and Save

## at our New Location

### 60 NORTH PEARL STREET, Corner of Steuben

MEN'S FINE QUALITY SPORTSWEAR

OUTERWEAR • SUITS • FOOTWEAR

and HABERDASHERY

*all priced to clear!*

# EVERYTHING IS ON SALE\*

\*With the exception of Fair Trade items

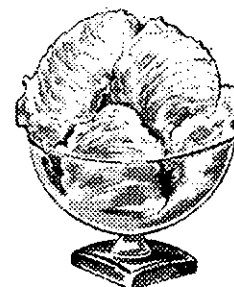
ALL SWEATERS AND SPORT SHIRTS 1/3 OFF  
ON BONA FIDE TOP GRADE BRANDED MERCHANDISE

You are invited to use your charge accounts during this sale and — as usual — alterations are free.

**C. L. Summer & Co., Inc.**  
60 NORTH PEARL STREET, ALBANY, N.Y.

Open Thursday till 9 p. m. . . . Saturday till 5:30—Free Park and Shop Tickets

## JANUARY SPECIALS



### IRISH COFFEE ICE CREAM

(with a touch of  
the real McCoy in it  
. . . imported too)

## TOLL GATE

in Slingerlands

As one staff member said, "When I came to work at the Library I thought all I would have to do is stamp books and look pleasant."

That she must do. But to carry on as a large a business operation as the Delmar Library has become means not a leisurely pace but one taken at a gallop. Our determination or resolution to give our borrowers the very best service ever; to give this service in whatever area asked: to do this happily and efficiently. It is a privilege to know and help you. Happy New Year.

**Kiwanis Notes**

President Arthur L. Fleahman Jr. has announced his selection of 1966 committee chairmen for the Delmar Kiwanis Club. Also, he presented the

club's objectives and administration plans for 1966 to the club membership. The following are President Fleahman's selections as committee chairmen: Delmar Club History, Francis L. Barclay; Fund Raising, Albert A. Beckmann; Scholarship & Loan, LeRoy S. Stoothoff; Welfare & Visitation, Novice B. Osterhout; Circle "K" Club, Charles Fritts; Boys & Girls, Aldon P. Pugliese; Key Club, John A. Elford; Vocational Guidance, Francis Dillenback; Agriculture & Conservation, Edward E. Smith; International Relations, Andy J. Andorn.

Also: Public & Business Affairs, Arthur T. Zautner; Support of Churches, William J. Lamb; Achievement, Francis L. Barclay; Education & Attendance, John Clyne; Finance, W. Gordon Morris; House, Music & Reception, Edmond M. Haven;



Semi-Annual

**Clearance!**  
**20% OFF**

Important savings extends broadly throughout our quality men's wear

- Suits   Sport Coats   Outerwear
- Shirts   Sport Shirts
- Neckwear   Pajamas   Gloves
- Hats   Sweaters

*Stulmaker's*

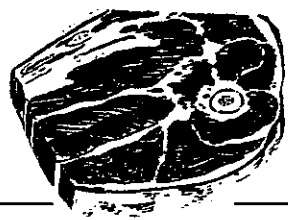
**8 James Street**  
just off State

Member Park 'n Shop—Open Thursday Evenings 'til 9

**Guaranteed Eating Pleasure  
With Tablerite Meats**

TABLERITE MEAT - U.S.D.A. CHOICE

**CHUCK ROAST**



BLADE CUT

LB. **39¢**

**CHUCK STEAK**

LB. **49¢**

**BOSTON ROAST**

BONELESS LB. **89¢**

**GROUND CHUCK**

LB. **79¢**

1ST PRIZE SKINLESS

**FRANKS**

LB. **73¢**

CALIFORNIA  
**ORANGES**  
DOZ. **49¢**

FLEISCHMANN'S  
**MARGARINE**  
1/4'S **2 for 69¢**

RICO, FROZEN  
**CHEESE PIZZA**  
**69¢**

GOLD MEDAL  
**FLOUR**  
5 LB. **49¢**

IGA Y.C.

**PEACHES** SLICED 2 1/2 **25¢**

SUNSWEEP

**PRUNE JUICE** QT. **35¢**

GIANT  
**TIDE**  
**59¢**

DEL MONTE  
**PEAS**  
303 **19¢**

DEL MONTE  
**CORN**  
303 **19¢**

**SLINGERLANDS MARKET**



1526 NEW SCOTLAND ROAD, SLINGERLANDS, N.Y.  
(next to Fire House)  
Phone 439-9816

STORE HOURS: Mon. thru Sat. 7 a.m. to 11 p.m.  
Sundays 9 a.m. to 9 p.m.

WE RESERVE THE RIGHT TO LIMIT QUANTITIES  
Prices Effective: Thurs., Fri., Sat. (1/13, 1/14, 1/15)



at Adam's

**IT'S JANUARY SALE TIME**

During this sale you'll select from our REGULAR FINE QUALITY MERCHANDISE at wonderful savings!

- DIAMOND RINGS
  - DIAMOND WATCHES
  - DIAMOND SETTINGS
  - DIAMOND EARRINGS
  - CULTURED PEARLS
  - PEARL JEWELRY
  - BIRTHSTONE RINGS
  - WATCH BRACELETS
  - BILLFOLDS & WALLETS
  - STERLING HOLLOWARE
  - IMP. CUT GLASS
- DRESSER SETS
  - DIAMOND PINS
  - DIAMOND BRACELETS
  - WEDDING RINGS
  - SIMULATED PEARLS
  - WATCHES
  - FOUNTAIN PENS
  - LIGHTERS
  - STERLING AND PLATED HOLLOWARE
  - GIFTWARE

**True Savings of 20 to 50%**

CHARGE PLANS: • 30 days • 90 days • 10 months

Open Thursday  
'til 9 p.m.

Free Parking at All  
Park & Shop Lots

FRANK H. *Adams*  
JEWELERS - SILVERSMITHS  
58 No. Pearl St., corner Steuben, Albany

SPOTLIGHT CLASSIFIEDS TELL THE WORLD  
CALL HE 9-4949

Inter-Club Relations, Joseph J. Stella; Laws & Regulations, Harry B. Rezzemini; Membership Development, Gilbert C. Lewis; New Club Building, Walter E. Owens; Programs, Edwin L. Collins, Jr.; Public Relations, John T. Hornberger.

**Meeting**

The Ladies' Auxiliary of the Elsmere Fire Company will hold its regular meeting Thursday, January 13, at the Fire Hall, at 8:00 P. M.

Dr. Harold Brown will show movies on Hawaii, and refreshments will be served by the Mesdames George King, Irving Leonard, Leland Martin, Fred Grasser, and Charles Earing.



A large number of women from the Delmar area are again participating actively in the weekly programs of the Legislative Women's Club, which met for the first time this year on Tuesday.

The group includes wives of state legislators and officials, and meets every week during the legislative session. The meeting on Tuesday was held at 1 P. M. at the home of Mrs. William Fuller in Loudonville.

Among the Tri-Village women who are club members are: Mrs. William Arnstein, Mrs. Alton Marshall, Mrs. Paul McGinnis, Mrs. Paul Orvis, Mrs. Douglas Rider, Mrs. Charles E. Walsh Jr., Mrs. A. F. Dappert, Mrs. Edward Rook, Mrs. J. R. Cain, Mrs. Nicholas Cammero.

Also, Mrs. Arthur Cornelius, Mrs. Walter Crewson, Mrs. Daniel Dalrymple, Mrs. Thomas Dinnel, Mrs. Don L. Essex, Mrs. Burton Hughes, Mrs. Roy G. Gales, and Mrs. Hollis Ingraham.

Serving as officers or committee chairmen are: First vice-president and program chairman, Mrs. Dappert, (whose programs last year made use of knowledge and talents of many Tri-Village people and were considered some of the best ever told) treasurer, Mrs. Ingraham; publicity, Mrs. Cammero; and auditor, Mrs. Arnstein.

The Legislative Women's Club

...here's a honey of a deal...

**14 BONUS DAYS**

FOR MONEY DEPOSITED ON OR BEFORE JANUARY  
14th EARNS INTEREST FROM JANUARY 1st

**4 1/4% ANNUALLY**

(COMPOUNDED QUARTERLY ON THE FIRST  
DAY OF JANUARY, APRIL, JULY, & OCTOBER)

**THE HOME SAVINGS BANK**  
94 YEARS OF SERVICE TO SAVERS 1872-1966

MAIN OFFICE  
11 No. Pearl St.

CENTRAL AVE. OFFICE  
163 Central Ave.

COLONIE OFFICE  
Wolf Road

MEMBER FEDERAL DEPOSIT INSURANCE CORP.

**2 ARE LEFT**  
AT ALL THREE OF OUR  
LOCATIONS

BANKING HOURS:  
MON. THRU FRI. 9 A.M. TO 3 P.M.,  
THURS. 9 A.M. TO 8 P.M.

was organized about 35 years ago, mainly to give the wives of legislators from out of town a chance to get together and amuse themselves while they were in Albany with their husbands. Now, with easy and fast transportation available, (at least outside of New York City!) the group no longer serves merely as a social outlet for visiting wives, but provides interesting programs about many aspects of state government, for women who are eager to learn about and discuss all sorts of topics.

...

The aforementioned Mrs. A. F. Dappert, who lives with her husband at 11 Pinedale Avenue in Delmar, won't be in town for all of this year's legislative session, but she has a wonderful excuse being away.

She and Mr. Dappert, who

retired last May from his position as director of water resources for the State of New York, are going to Hawaii next week to attend the two-week Asia-Pacific Seminar. The conference will be held from January 20 to February 3 in Honolulu and on the Island of Maui.

Also planning to attend the seminar are Dr. and Mrs. Albert H. Harris of 27 Southwood Drive in Slingerlands.

The seminar, titled "Arts in Asia," is designed to combine recreation with learning, and is being sponsored by the Institute of Man and Science and the Oliver Wendell Holmes Association.

Among directors of the seminar are Dr. Everett Clinchy, Dr. Carlos Romulo, Dr. Ralph Bunche, Mr. Norman Cousins, and Dr. Philip Handler (science advisor to President Johnson.)

# ANNUAL CLEARANCE Sale

20% - 30%

50% OFF

ON EVERY ITEM  
IN OUR STORE

(With the exception of a few Fair Traded Items)

**Magins** GIFTS IN LEATHER  
EST. 1872  
222 WASHINGTON AVE., HO 2-1371

<b>RIB ROAST</b>	U.S.D.A. CHOICE, KING OF THE ROASTS	lb.	<b>59¢</b>
<b>SAUSAGE</b>	ITALIAN, HOME MADE	lb.	<b>83¢</b>
<b>SHOULDERS</b>	FRESH, PORK	lb.	<b>43¢</b>
<b>SAUSAGE</b>	SMITH'S	lb. bag	<b>69¢</b>
<b>BOILED HAM</b>	IMPORTED	lb.	<b>79¢</b>

New Meat Dept. Phone: 439-9419

Custom  
Cut and  
Wrapped

## FREEZER BUYS

HEAVY WESTERN U.S.D.A. CHOICE

Special  
Freezer  
Paper Used

**HINDQUARTER** lb. **69¢** **FOREQUARTERS** lb. **49¢**

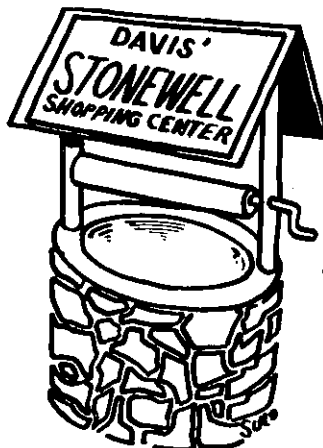
**SIDES OF BEEF** Local Black Angus 220-275 U.S. Choice lb. **58¢** **SIDES OF BEEF** Avg. Weight lb. **52¢**

<b>SUGAR</b>		5 lb. bag	<b>49¢</b>
<b>DOG CHOW</b>	Purina	25 lb. bag	<b>\$2.59</b>
<b>BREAD</b>		KING SIZE	<b>19¢</b>
<b>BUTTER</b>	DAIRYLANE	LB.	<b>65¢</b>
<b>MARGARINE</b>	MRS. SILVER'S	2 lbs.	<b>47¢</b>
<b>HERSHEY BARS</b>	GIANT - PLAIN OR NUTS EACH		<b>29¢</b>
<b>FROZEN PIES</b>	MORTON'S (Chicken, Beef, Turkey)	each	<b>15¢</b>



## PRODUCE SPECIALS

**ORANGES** FLORIDA DOZ. **39¢**



JUNCTION HIGHWAYS 85 & 85A  
NEW SCOTLAND, NEW YORK

HE 9-5398

Open Daily and Sundays  
10 A.M. to 10 P.M.

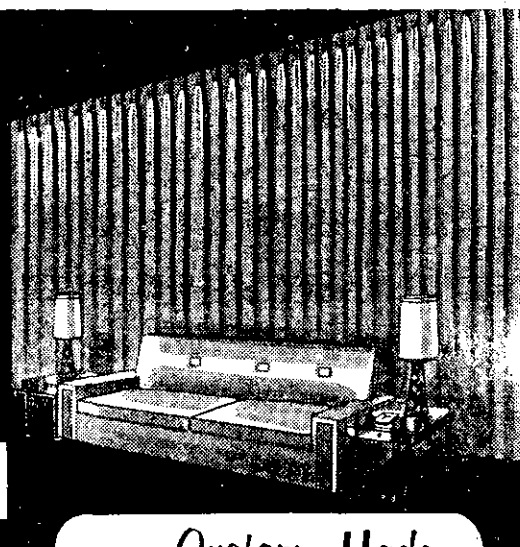
Reserve right to limit quantities

Prices effective: Thurs., Fri., Sat.  
(1/13, 1/14, 1/15)

# ONCE A YEAR SPECIAL OFFER!!

## CUSTOM DRAPERY SALE!

### LAST 3 DAYS



**OUR Custom-Made  
DRAPERIES ARE MADE TO  
YOUR EXACT MEASUREMENTS  
Any Width . . . Any Length**

Come in and choose from a world of drapery fabrics and colors. Don't miss this opportunity to brighten your home with custom-made draperies at a budget-pleasing price.

# 20% OFF

ON CUSTOM DRAPERIES  
FROM A SELECTED GROUP OF  
OUTSTANDING FABRICS

**WE MAY HAVE CUT THE PRICES . . .  
BUT WE NEVER CUT THE QUALITY**

- Custom pleating!
- Double folded top heading with permanent stiffening!
- Generous double bottom hems!
- Blind stitched side hems!
- Corner weighting for even hanging!

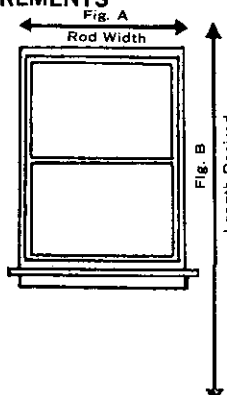
We'll deliver your finished draperies to you decorator folded and ready to hang . . . no pressing needed.

### BRING IN YOUR MEASUREMENTS

**... AND ENJOY THE  
SAVINGS!**

FOR WIDTH, measure the width of your rod or width of distance where rod is to be placed.  
(Fig. A)

FOR LENGTH, measure from top of rod to length desired.  
(Fig. B)



OPEN DAILY  
'TIL 9 P. M.  
SATURDAY  
'TIL 6 P. M.

**Marcel's  
FABRICS**

STUYVESANT PLAZA

PHONE  
489-4795

Attendance is by invitation only, and we should feel honored to have two couples from our community included in such illustrious company.

...

Mrs. Leo H. Olmstead of 415 Delaware Avenue in Delmar just returned the week before Christmas from working for three months with the Red Cross disaster relief team in New Orleans.

Mrs. Olmstead had been a staff member of the Albany Area Red Cross Chapter for more than 20 years, and retired from her job on September 15. "The next day I found myself in New Orleans," she told me recently.

She said the wreckage wrought by Hurricane Betsy and the resulting floods was the worst disaster she's ever seen — and she's been assigned to about 25 national disaster scenes over the years.

Mrs. Olmstead supervised volunteer workers from a headquarters set up in Chalmette, a town about 10 miles outside New Orleans. She said her headquarters helped about 5,200 families, and in New Orleans itself more than 10,000 families applied for Red Cross assistance.

The Red Cross has already spent more than \$14,000,000 to rehabilitate families in the three-state area affected by the storm, and Mrs. Olmstead said a Red Cross team will be stationed there at least until next September.

A soft-spoken widow, Mrs.

**JAMES W. BARTLEY  
and SONS**

Plumbing, heating & electric  
water pump sales & service  
Clarksville PO 8-2230

**Expansion Sale  
Save up to 50%**

On over 100 pianos and organs the walls are coming down this week. SAVE NOW.

**BROWN'S**

PIANO &  
ORGAN MART  
1047 CENTRAL AVE., ALBANY, N. Y.  
PH 459-5230

Olmstead expects to be sent on other disaster assignments for the Red Cross when the need arises. "It's very hard work, but very challenging and very rewarding," she said. "You see people just pulled to bits by the forces of nature, and you do what you can to help them resume a normal life."

...

The "sandwich in a book" program for this month at the Delmar Public Library has been cancelled because the speaker is unable to attend. There will be a program next month, however, on February 16, and all are invited to take a sandwich lunch to the library on that day and hear a speaker on some literary topic.

## Meeting

The Music Study Department of the Delmar Progress Club will meet January 17, at 1:30 P. M. in the Bennett Parlors of the Delmar Reformed Church. The program will be "Studies From Brahms - Voice and Piano." The artists participating are Mrs. Donald S. Dewire, Mrs. Lyle J. Schoenthal and Mrs. Harold C. Williams. Following the concert, the social hour will be in charge of Mrs. W Arthur Noller.

## Meeting

Barbara Howe, Community Ambassador, will be the speaker at the Delmar Day Unit meeting at the Delmar Library, Fri-

# LOOK AROUND YOU!

There's nothing like  
Kelly Clothes

# SEMI-ANNUAL SALE



TROY'S FAMOUS FACTORY STORE  
621 RIVER STREET, TROY  
2 BLOCKS NORTH OF HOOSICK  
PHONE AS 2-2022

OPEN TUESDAY and  
FRIDAY NIGHTS 'TIL 9 P.M.  
OTHER DAYS INCLUDING SATURDAY  
UNTIL 5:30 P.M.



**AMERICAN BRAND**  
**HEATING OIL**  
**24 HOUR SERVICE**  
All Makes of Burners  
**McENANEY**  
OIL CORP. (EST. 1922)  
179 No. Main Ave.  
IV 9-3266

day January 14, at 1:30 P. M. At 10:00 A. M. on the morning of the meeting, a class on smocked pillows will be held. Bring a sandwich and stay for the program.

## Meeting

Mrs. Edward Costigan, presi-

dent of Nathaniel Adams Blanchard Unit #1040, American Legion Auxiliary, announces the regular monthly meeting will be held Tuesday, January 18, in the Post Rooms, Popular Drive, Delmar, at 8:00 P. M.

Mrs. LeRoy Cooke, Americanism Chairman, has planned a Flag program. Mrs. Frank Tur-

ner and her committee will be in charge of refreshments.

• IN THE WINDOW of a tavern: "Two Bouncers. No Waiting." Inside, over the bar, a sign: "Remember, it's dangerous to drink on an empty wallet." Catholic Digest—December.

# THINK 1<sup>st</sup> FIRST

NATIONAL  
BANK

## First National DIRECT AUTO LOAN

# 3 1/2%

A YEAR DISCOUNTED  
( '66, '65, '64 AUTOS )

### Why Pay More?

Fast 10 Minute Loan Service

Monthly Payment	24 MONTHS		36 MONTHS	
	Amount Loan	You Receive	Amount Loan	You Receive
45	1080	1004	1620	1450
46	1104	1027	1656	1482
47	1128	1049	1692	1514
48	1152	1071	1728	1547
49	1176	1094	1764	1579
50	1200	1116	1800	1611
51	1224	1138	1836	1643
52	1248	1161	1872	1675
53	1272	1183	1908	1708
54	1296	1205	1944	1740
55	1320	1228	1980	1772
56	1344	1250	2016	1804
57	1368	1272	2052	1837
58	1392	1295	2088	1869
59	1416	1317	2124	1901
60	1440	1339	2160	1933
65	1560	1451	2340	2094
70	1680	1562	2520	2255
75	1800	1674	2700	2416
80	1920	1786	2880	2578
90	2160	2009	3240	2900
100	2400	2232	3600	3222

ALWAYS THINK FIRST

GUILDERLAND  
489-4408

COLONIE  
869-8455



of SCOTIA  
NISKAYUNA  
COLONIE  
MOHAWK AVE. at TEN BROECK  
BALLTOWN ROAD at NOTT ST.  
CENTRAL AVE. at KILLEAN PARK  
GUILDERLAND—WESTMERE  
KARNER RD. at WESTERN AVE.  
MEMBER FEDERAL DEPOSIT INSURANCE CORPORATION

SCOTIA  
377-6491  
NISKAYUNA  
393-3684

## How You Eat Shows What's Eating You

Eating foods which require a lot of chewing may be one way to avoid peptic ulcers, scientists theorize in the Catholic Digest.

The large volume of saliva produced by increased chewing may be the protective factor. Thorough mastication produces larger quantities of saliva and changes its make-up to help reduce the acid level in the stomach.

So there just *might* be something to be said in favor of a tough Thanksgiving turkey!

## WE'RE PROUD OF OUR BUSINESS

PATROON FUELS  
INCORPORATED  
91 Lexington Avenue  
HO 5-3581

## WE'RE PROUD OF OUR PRODUCT



Premium Quality Atlantic Heating Oil is triple-refined ... to ignite instantly, burn clean and steady ... to give you the most for your heating oil dollar. Call NOW. We provide prompt, automatic delivery service.

## RECREATION PROGRAM

by William Fuller, Director

The Spring Semester of the Bethlehem Central School District Adult Recreation Program will begin during the week of January 17. Eight activities have been scheduled for the 10-week period as follows:

Stroke Improvement	Mondays	8:30-10:00 P.M.	Starts Jan. 17
Beginning Golf	Mondays	7:00-10:00 P.M.	Starts Feb. 7
Basketball	Mondays	8:00-10:00 P.M.	Starts Jan. 17
Men's Fitness	Tuesdays	7:30-9:30 P.M.	Starts Jan. 11
Slimnastics (Women)	Tuesdays	7:30-9:30 P.M.	Starts Jan. 11
Badminton	Wednesdays	7:00-10:00 P.M.	Starts Jan. 12
Beginning Bridge	Wednesdays	7:30-9:30 P.M.	Starts Jan. 19
Fly & Bait Casting	Mondays	7:30-9:30 P.M.	Starts Jan. 17

All of the activities, except Fly and Bait Casting, will be held at the Bethlehem Central Junior High School. Persons participating in the program must be residents of the Bethlehem Central School District. Registration for Stroke Improvement, Beginning Golf, and Beginning Bridge must be made by calling William Fuller, Recreation Specialist, at HE 9-4984 on school days between 1:00 and 2:00 P.M. Adults may register for the other activities when they attend the first meeting of the group.

## Myers Great Annual

# White SALE

## NOW GOING ON

VALUES IN ALL  
DEPARTMENTS

Sheets -  
Linens -  
Towels -  
Pillow Cases

# Myers

DOWNTOWN, ALBANY

## STENOS TYPISTS

MANPOWER needs you for  
immediate assignments.

APPLY AT

**Manpower Inc.**  
50 STATE ST.

## SNOW BLOWERS

SNOW BIRD — TORO  
SUNBEAM

**TAYLOR  
& VADNEY**

303 Central Ave.

HE 4-9183

Open Daily  
8 A.M. to 9 P.M.

ANNUAL SALE  
OF

# Furs

BECK'S

ONCE A YEAR EVENT  
THAT OFFERS  
EXCEPTIONAL VALUES  
AT MOST ATTRACTIVE  
PRICES • IN  
FAMOUS-FOR-QUALITY  
FURS.

## Beck Furs.

111 Clinton Ave., Albany Daily 10 to 5:30  
Eves. by Appt.



We Want Your  
BUSINESS!

# ALBANY DODGE

949 CENTRAL AVE.

HE 9-4949

SPOTLIGHT CLASSIFIEDS

HE 9-4949

**CLASSIFIED AD POLICY**

Classified Ads in the Spotlight must be paid for when the ad is submitted. We must enforce this policy strictly. Our rates are too small to permit invoicing and bookkeeping on these accounts. Please do not ask us to make any exception to this rule.

Your copy and remittance must reach us on Friday before 4:30 P.M. in order to appear in the following Thursday issue.

**CLASSIFIED ADVERTISING****RATES**

10¢ per word for each insertion;

\$1 minimum.

**CALL HE 9-4949**

Write, or stop in at our convenient office:

154 Delaware Avenue

**ALTERATIONS & SEWING**

**ALTERATIONS** and sewing. M. Buess. HE 9-1270. tf

**ALTERATIONS** and sewing. Kirk Hauser. HE 8-0014. tf

**APPLIANCE SERVICE**

**RAE:** small appliances repaired. Free pick-up and delivery. RO 7-3821. tf

**WESTINGHOUSE** — Imperial Westinghouse Service, specializing in washers, dryers, dishwashers, ranges, etc. Telephone HO 3-6700. 2t120

**APPLES**

**BEST PLACE TO BUY** McIntosh, Northern Spy, Cortland and Baldwin apples, fresh brown eggs. Haswell Farms, Rt. 32 at Murray Avenue, Delmar. HE 9-3893. tf

**BUILDING & CONTRACTING**

**HOMES,** garages, remodeling, additions, "easy terms." Hogan Construction Co. IV 2-4693. tf

**CARPENTRY**

**REMODELING** — All types of carpenter work. H. A. Ertel, HE 9-1048. Ed Hehre, HE 9-1198. tf

**ADDITIONS,** remodeling, roofing, stairs, general repairs. Arthur Molle. HE 8-7165. tf

**CARPENTRY AND MASONRY** Experienced. Fireplaces. Alterations, additions. Fred Chalcrafts. HE 9-1796. tf

**CLEANING SERVICE**

**LOCHMOOR** Window Cleaning Co. Resident and office maintenance, complete. IV 9-0121 or 489-2474. tf

**HOUSE CLEANING,** window washing, floor maintenance, also any other cleaning you need. Old Holland Cleaning Service, Inc. RO 7-2739. tf

**DRIVER TRAINING****Albany Driving Academy**

Glenmont, New York

Beginners - Intermediates

Brush-Up

**CARS AVAILABLE FOR ROAD TESTS**

Standard & Automatic

Call HO 2-1309

**DOLL REPAIRING**

**DOLLS** repaired, restring, costumeing. Reina Deitz. HE 6-1690. tf

**FIREPLACE WOOD**

**HARD,** seasonal fireplace wood. Call Albany IV 2-5231. tf

**FIREPLACE WOOD,** maple and oak, wholesale and retail, truckload or truckload. Will-Roy Orchards, Rt. 85 A, between New Scotland and Voorheesville. HE 9-3392. tf

**FORMAL RENTALS**

**MEN'S** — All types available. Latest



5 P.M. FRI.

TO

9 A.M. MON.

**WEEKEND SPECIAL**

Rent a Car

**5.95**

**PLYMOUTH**

Per Day  
Plus  
10¢ a Mile

For Reservation, Phone

**IV 9-5487**

**Avis Rent A Car**

INQUIRE ABOUT OUR LOW  
TRUCK RENTAL RATES

styling and colors for dances, formal dinners, weddings, parties, etc. On 24-hour notice. Reasonable TAD's, 4 Corners. HE 9-4511. tf

**FUNERAL DIRECTORS**

**M. W. TEBBUTT'S SONS**  
Albany Delmar

420 Kenwood Ave.  
HE 9-2212

Serving All Faiths  
For Over 100 Years

**LAWNMOWERS**

**LAWNMOWERS,** all makes serviced now, free winter storage. **SNOWBLOWERS** repaired & Free Delivery. Hilchie's Hardware, Elmsmere. HE 9-9944. tf

**MASON WORK**

**EXPERIENCED,** all types masonry, new or repairs. Guidara. HE 9-1763 evenings. tf

**MOVERS**

**D. L. MOVERS.** Local and long distance moving. Reasonable rates. No job too small or too large. Dick Leonardo. HE 9-5210. tf

**HOUSEHOLD MOVING,** low rates, new equipment, experienced personnel, free maid service. Local moving. 465-1200. tf

**ORIENTAL RUGS**

**NEW AND USED,** in all sizes and colors at reasonable prices. Washing and repairing by native expert. Pickup and delivery. Free estimates. Rod Kermani, Stop 3, Albany-Schenectady Road, EX 3-6884 or IV 2-0457. tf

**PAINTING & PAPERHANGING**

**INTERIOR,** exterior painting. Free estimates. Guaranteed. Insured. Jim Vogel. HE 9-8718. tf

**INTERIOR** and exterior painting. Also carpentry work. Frank Salisbury. Days: HE 9-5527; nights: HE 9-1355. tf

**DON VOGEL,** painting — paperhanging, fully insured. Winter rates. HE 4-2853. HE 4-8370. tf

**PERMANENT WAVING**

**SPECIALIZING** in Breck, Realistic, Rayette and Caryl Richards permanents; hair tinting and bleaching. MELE'S BEAUTY SALON, Plaza Shopping Center, HE 9-4411. tf

**PHONOGRAPH REPAIRS**

**PHONOGRAPHS,** Hi Fi, Stereo repaired, needles installed. Blue Note Shop, 156 Central Avenue. HO 2-0221. 4t127

**PIANOS**

**PIANOS** — organs. Area's largest selection. BROWN'S PIANO — Organ Mart. 459-5230. tf

# OPEN HOUSE ANNOUNCEMENT

(Watch the Spotlight for Date and Time)

**SOON**  
at



CALL 869-0044



**SAW FILING**

**SAWS** sharpened, chain saw service. N. Livingston, 4 Mountainview, Karlsfeld. IV 9-1979. tf

**SCISSORS SHARPENED**

**SIX** pairs medium size scissors \$2; also pinking and grass shears, knives, lawnmowers. Call for and deliver. HE 9-3893. tf

**SEPTIC TANK SERVICE**

**NORMANSKILL** Septic Tank Cleaners. We install dry wells, septic tanks, drain fields. 767-9287. tf

**DELMAR SANITARY CLEANERS**—ERS. Serving Tri-Village area over 20 years. HE 9-1412. tf

**TREE SERVICE**

**HERM'S TREE SERVICE:** trimming and removal (insured). Call Albany, IV 2-5231. tf

**TUTORING**

**EXPERIENCED** effective teacher. Science, math., English. Owen France Ph.D. PO 8-2373. 2t120

**REMEDIAL READING:** structural method to improve reading skill. Experience and references. Velma B. Glenn. HE 9-2447. 4t23

**UPHOLSTERING & SLIPCOVERS**

**REUPHOLSTERING,** slipcovers made to order, reasonable. 25 years experience. Capitol Upholstery. HO 3-2359. 4t120

**WATCH REPAIRING**

**EXPERT WATCH AND JEWELRY** repairs. Diamond setting, engraving wedding and engagement rings, reasonable. Your trusted jeweler, D. LeWanda, Delaware Plaza Shopping Center. HE 9-9665.

**WORLD BOOK**

**WORLD BOOK** Encyclopedia, \$10 down, \$8 a month. Phone Bob Roth, your authorized local representative. 439-2360. 3t113

**MERCHANDISE FOR SALE**

**ALUMINUM** combination windows, doors, siding, etc. Finest quality at lowest prices. Taylor Aluminum Products. RO 5-2856. tf

**ANTIQUES** bought and sold at the sign of the Coffee Mill, 67 Adams Pl., Delmar. HE 9-1021. tf

**FUEL OIL:** 2¢ per gal. cash discount. Academy Oil Service, Glenmont. 24-hour service. HC 2-1309, 485-5336. tf

**PIANOS** — MASON & HAMLIN, Knabe, Fischer, Weber and Stark, also fine selections of slightly used pianos. Call A. Andrew Gigliotti. HO 3-5223. tf

**RECLINERS,** King size, regular \$159, special \$89.95. Michelson's Quality Furniture, 1704 Western Ave., Albany. HE 8-5321. tf

**FURNITURE:** our low cost operating policy enables us to bring you BIG SAVINGS ON NEW furniture, rugs, bedding, drapes. BURRICK FURNITURE, 560 Delaware Ave.,

Albany. Just across the Thruway Bridge in Albany. tf

**TADS Merchandise Club #6** Now forming for early January start. stop in soon and get details. TADS Men Shop, 4 Corners, Delmar. 8t113

**CARPET** and padding: 9' x 17' — 6' x 12'. One piece 30" x 54" and padding — 2 ft. 4" x 12 ft. \$90. Twelve rugs \$60; one 4' bookcase, cherry, \$60. 438-6518.

**CHAIRS HAND CANED** — special price on large rocking chairs, also straight chairs in groups of 4 or more. HE 9-2118.

**KNAPP SHOE FACTORY** clearance sale. Tremendous savings. Call HE 9-1221, HE 4-7051. 2t120

**TV, \$20; baby carriage, \$10; living room table, \$6; Drapes, \$6.** 751-9974

**DOT'S** — New boots, sneakers, car seats, cribs, chifferobe, ice skates. Winter clothing sale. HE 9-9086.

**PIANO,** Janssen, mahogany console, full keyboard, built-in light, excellent condition, \$450. HE 9-2725.

**TAKE SOIL AWAY** the Blue Lustre way from carpets and upholstery. Rent electric shampooer \$1. Adams Hardware, 380 Delaware Avenue, Delmar.

**PIANO,** upright, (Haynes Bros.) painted pink, \$20. plus moving cost. IV 2-6919.

**CULLIGAN WATER SOFTENER,** automatic, year old, asking \$150. Dehumidifier #600, year old, asking \$60. HE 9-9747 before 6 P. M.

**TWO SNOW TIRES** 8:00 x 15 mounted, like new, \$25. Phone HE 9-9712.

**250 SPRAY TANK** WITH 2 used pumps and motors, 4" channel frame, mounted, \$75. 439-4947.

**OLD ALBANY** and area prints add a touch of historical elegance to your home. HE 9-5086. 2t120

**REFRIGERATOR** suitable for apartment or camp, perfect condition, \$25. 439-5063.

**GOLF OUTFIT,** 7 irons, 5 clubs, shoes, size 9, cart and bag, \$50; ice skates, size 10, man's hockey, \$5.95; junior ice skates with shoes, size 11, \$3; outboard motor, 3 hp., \$25. Phone HE 9-5227.

**AUTOMOTIVE FOR SALE**

Saab Authorized Dealer

**NEW SALEM GARAGE**

New Salem Route 85  
DeWitt and Fred Carl  
— NEW AND USED CARS —  
Telephone RO 5-2702

1960 FORD FALCON, good condition, standard shift. 439-5767.

**PETS**

**POODLES** for sale, AKC registered, white, one male, one female, 7 weeks old. 751-5995.

**BIRD CARE** for vacationers, week, month. HE 9-2337.

Subscribe to the Spotlight

**REAL ESTATE FOR RENT**

**LADY,** room for rent near four corners, Delmar. Available December 8. 439-5218. tf

**DELMAR \$80,** apartment, one bedroom unheated. HE 9-1412 or HE 9-5749. 3t120

**SMALL OFFICE** at four corners Delmar, reasonable. Call HE 9-1211. tf

**DELMAR OFFICE FOR RENT,** 425 sq. feet, heat and electric. HE 9-1468. tf

**HOUSE—5½** rooms, heat and hot water, individual thermostat, Glenmont. RO 7-2645.

**WANTED TO RENT**

**FURNISHED HOUSE** available February 5th in Bethlehem School District. HO 3-0405. 3t127

**HELP WANTED**

**"AVON CALLING"** — Representatives needed to call on homes in Tri-Village area. Call Mrs. Calisto. ST 5-9857. 2t113

**HOUSEKEEPER** for two adults. References required. HE 9-4642. 3t120

**ASSISTANT MANAGER** for our Delaware Plaza Store. Full time position. Salary plus paid Hospitalization. Vacations and other store benefits. Call Mr. Childs at HO 3-2118 for interview.

**SITUATIONS WANTED**

**HIGH SCHOOL** freshman wants job as mother's helper, Saturdays 11-3, steady if possible. Call Meredith Uhl after 6:30. HE 9-5591.

**SUBSCRIBE TO THE SPOTLIGHT****Colonial Acres**

RT. 32, GLENMONT, N.Y.  
A planned community of early American homes.

PHONE HE 9-9231

**DELMAR'S LEADING REALTOR**

When Buying or Selling  
A Home  
Call Your LOCAL  
REAL ESTATE BROKER

William B.

**PAGANO**

Our 46th Year  
264 Delaware Ave.,  
Delmar, N.Y.

439-9921

Multiple Listing Service

**LOST & FOUND**

**LOST** — Delmar, Woman's glasses, black frames. Call HE 9-5496.

**WANTED — INSTRUCTIONS**

**GUITAR** instruction wanted at home. Please call 439-5063.

**von Bank's TV SERVICE HE 4-5887**

Quality — Responsibility — Honesty

**NEED CARPET?**

Shop Smart! See Mill Ends at

**GENTILE'S**

1100 Central Ave. at The Underpass  
IV 2-3398 Daily 'til 9

Spotlight Classifieds

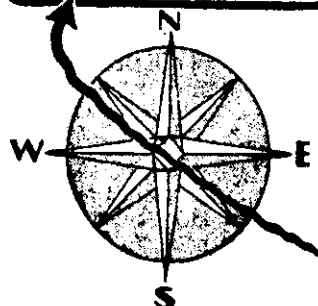
Tell The World!!!

**APPLIANCE AND TV SERVICE PAUL HOPKINS**

HE 9-3820

**THERE'S ONLY ONE DIRECTION FOR THE BEST USED CARS IN TOWN. EVERYONE WILL DIRECT YOU TO....**

**MARSH HALLMAN**



**Fast Becoming  
New York State's  
Largest  
Chevrolet Dealer**

**OVER 300 CARS  
NOW IN STOCK**

**Marsh Hallman  
CHEVROLET  
781 CENTRAL AVE.  
IV 9-5551  
Open Evenings**



# JANUARY CLEARANCE

OPEN 'TIL 9

many items from our regular stock of Nationally Branded Quality Merchandise . . . we cannot mention the brands but you'll recognize the labels . . . also many other price reductions, in all departments, too numerous to mention!

# Sale!

## men's dept.

<b>SUITS</b>	reg. 65.00	<b>51<sup>99</sup></b>
<b>TOPCOATS</b>	reg. 49.95	<b>39<sup>99</sup></b>
<b>SPORTCOATS</b>	reg. 29.95	<b>23<sup>99</sup></b>
	reg. 35.00	<b>27<sup>99</sup></b>
<b>SLACKS</b>	reg. 15.95	<b>12<sup>69</sup></b>
<b>ZIP LINED COATS</b>	reg. 32.95	<b>25<sup>99</sup></b>
	reg. 65.00	<b>51<sup>99</sup></b>
<b>WINTER OUTERWEAR</b>	reg. 75.00	<b>59<sup>99</sup></b>
	reg. 19.95	<b>15<sup>99</sup></b>
	reg. 24.95	<b>19<sup>99</sup></b>
	reg. 29.95	<b>22<sup>99</sup></b>
	reg. 39.95	<b>29<sup>99</sup></b>

## men's furnishings

<b>SWEATERS</b>		reg. 10.95-12.95	<b>6<sup>89</sup></b>
reg. 13.95-14.95	<b>8<sup>89</sup></b>	reg. 15.95-16.95	<b>10<sup>89</sup></b>
<b>WHITE SHIRTS</b>		reg. 17.95-20.00	<b>12<sup>89</sup></b>
		reg. 5.00	<b>3<sup>39</sup></b>
		or 3 for	<b>10<sup>00</sup></b>
<b>PAJAMAS</b>		reg. 4.00	<b>2<sup>99</sup></b>
lined leather	<b>GLOVES</b>	reg. 2.99	<b>1<sup>99</sup></b>
stretch Capeskin	<b>GLOVES</b>	reg. 5.00	<b>3<sup>99</sup></b>
stretch Pigskin	<b>GLOVES</b>	reg. 5.95	<b>3<sup>99</sup></b>
<b>TIES</b>		reg. 1.50	<b>89<sup>c</sup></b>
		reg. 2.50	<b>1<sup>69</sup> or 3 for 5<sup>00</sup></b>
<b>FELT HATS</b>		reg. 10.95	<b>6<sup>89</sup></b>
all fur			

## boys' dept.

<b>SUITS</b>	reg. 24.95	<b>19<sup>99</sup></b>
<b>OUTERWEAR</b>	reg. 17.95	<b>13<sup>99</sup></b>
<b>BLAZERS</b>	reg. 13.95	<b>10<sup>99</sup></b>
<b>SLACKS</b>	reg. 6.98	<b>4<sup>99</sup></b>
<b>SWEATERS</b>	reg. 5.98-6.98	<b>4<sup>99</sup></b>
	reg. 9.98-10.98	<b>6<sup>99</sup></b>
<b>SPORT SHIRTS</b>	reg. 2.59	<b>1<sup>59</sup> or 2 for 3<sup>00</sup></b>
	reg. 2.98	<b>1<sup>99</sup></b>
	reg. 3.98	<b>2<sup>99</sup></b>
<b>ZIP COATS</b>	reg. 5.00	<b>3<sup>99</sup></b>
	reg. 11.98-15.00	<b>7<sup>99</sup></b>
	reg. 19.98	<b>14<sup>99</sup></b>

## students' dept.

<b>SUITS</b>	reg. 42.95	<b>33<sup>99</sup></b>
<b>SPORTCOATS</b>	reg. 29.95	<b>23<sup>99</sup></b>
<b>SLACKS</b>	reg. 8.95	<b>6<sup>99</sup></b>
	reg. 54.95	<b>43<sup>99</sup></b>
	reg. 34.95	<b>27<sup>99</sup></b>
	reg. 12.95	<b>9<sup>99</sup></b>

ALTERATIONS FREE!

U. S. POSTAGE  
Bulk Rate  
PAID  
Permit No. 10



CHARGE IT . . . OPEN AN ACCOUNT TODAY!