

## Reception

Bethlehem will have an international flavor again this summer with the arrival of seven Finnish teachers on July 9 and a pretty University student from Turkey on July 31. Thereby the "incoming" phase of the Bethlehem Community Ambassador Program will be in full swing.

Area residents who will open their homes and hearts to these "foreign" guests hope to share their visitors with the community at an informal reception.

The public is invited to meet and welcome them on Wednesday evening, July 13, from 8 - 10 P. M. in the community room of the Bethlehem branch of the National Commercial Bank.

Surprisingly, there is not a blonde among the Finnish group. Their ages range between 21 and 32. Two are married. Languages are considered an important part of education in Finland, so all our guests speak at least three.

The interests they noted in their self-descriptions mark them as a rather athletic group. They all expressed great interest in hiking, skiing, mountain climbing and a love of the outdoor in general.

Co-chairmen for the incoming group are Mr. & Mrs. Hildreth C. Bailey of 522 Huron Road. They will host Mr. Heikki Niemela, the Finnish group leader, and the only man in the group.

Other host families are: Mr. and Mrs. Ray Stephany, 172 Winne Road; Mr. and Mrs. Robert Balme, 51 Lansing Drive; Mr. and Mrs. Robert Oliver, 22 Brockley Drive; Mr. and Mrs.

August Franze, 40 Wiggand Drive, Glenmont; Mr. and Mrs. Walter Kinn, 34 East Bayberry Road, Glenmont; Mr. and Mrs. Benjamin Brewster, Jr., 1719 New Scotland Road, Slingerlands; Dr. and Mrs. Charles Hall, 44 Herrick Ave., Elsmere.

The Executive Committee of the Bethlehem Community Ambassador Program will entertain the visitors at a covered dish supper at the home of Mrs. Robert Taylor, BCAP chairman, on July 20.

Our dark-eyed Turkish visitor, Miss Ufuk Ozbudak, will arrive on July 31 for a seven-week visit until September 19. She was described by one of her Professors as "a good representative of the best in Turkish youth today." She is coming well prepared to portray her country for local organizations by bringing slides of her native land to implement her talks.

At 23, she is very fluent in English, having worked as an English interpreter at the Ministry of Foreign Affairs in Ankara, the capital of Turkey, in addition to her studies there at the University.

Her homestays are currently being arranged. One of them will be with Mr. and Mrs. John J. Cunningham of 1682 Western Avenue in Albany. Conversation should be lively, for Mrs. Cunningham was the Bethlehem Community Ambassador to Turkey in 1963.

At the close of her stay in this area the Turkish "Experimenter" will travel to Portland, Oregon, where she has been granted a scholarship for graduate study from Linfield College.

# The Spotlight

VOL. XI, NO. 27

JULY 7, 1966

\$1.00 PER YEAR

10¢ A COPY

## Drive Yourself Tour Ready

The 1966 version of the Original Drive-It-Yourself Tour is almost ready to start. This "Grand Tour" as it was referred to two years ago, will be equal in every way to its four previous versions.

Norman C. Kidder, Albany County Agricultural Extension Agent, and Frank Leavitt, Soil Conservationist with the Soil and Water Conservation Service in Albany County, are the unseen guides who conceived the idea of these tours in 1961 and have planned them ever since. They pointed out that in selecting the tour route and the points of special interest for 1966 they have made sure that it will include a variety of new places and new and unusual things to see. Among other features will be an emphasis on wildlife areas, and conservation work. Historic rural churches are prominent on the tour and people have been invited to stop and visit three of them. The youngsters will enjoy the open areas where farm animals can be seen and maybe a few wild animals will cross the seldom used woods included on the route. History along the entire tour spikes the interest.

Again the Drive-It-Yourself Tour is a "mystery tour" and its route is kept secret. Everyone is welcome and anyone who has a car (70 miles is a little long for a bicycle) can start on the tour on either Sunday, July 10 or 17. Just show up (rain or shine) between 10:30 A. M. and 3:30 P. M. at the Senior High School, Delaware Avenue, Delmar. You will be given a complete descriptive guide and information sheets about the nine special stops on the tour. Where you go is taken on faith, but the 804 cars that started on the last tour all re-

## Workshop

The Bethlehem Christian Workshop will be held July 11th-July 16th. This will be a week of learning and enrichment in a variety of interest areas and an opportunity to discover from the Bible the meaning of the historic Christian faith.

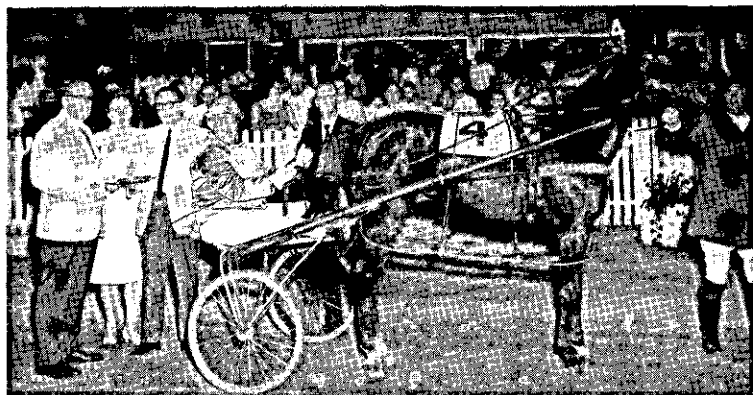
There will be classes in such various fields as "Auto Mechanics," "Astronomy," "Dramatics," "Fishing," "Folk Music," and "Field Biology." A class called "Tell Us, Please" for the older teenager will offer an opportunity for informal discussion on any and every subject — Viet Nam, civil rights, the new "God is Dead" theology. "The Finishing Touch" for girls will touch on all aspects of grooming, appearance, poise. Many other courses in the area of art, music and science will be offered on all age levels from kindergarten up.

For teens and pre-teens from 5th grade through Senior High, the program will be held at Sunny Acres Day Camp with swimming and other sports in an informal atmosphere from 5 P. M. on during each night of the week.

Registration fee is \$1 for each student and blanks and additional information may be obtained by calling Mrs. Wm. Bub, HE 9-3156; Mrs. Gerald Winn, HE 9-4777; Mrs. Dale Harro, HE 9-4100; Mrs. Robert Pauley, HE 9-4231.

turned home. If you get hungry on the tour, folks of a rural village have the pit all ready to barbecue chicken for complete Sunday dinner or will serve you snacks or lunch if you prefer.

It will be a nice Sunday Vacation trip for the family to take after church. While in the past the trip has been free, this year a 50¢ donation per car is being requested to help cover the many costs of the tour.



PRESIDENT ART FLEAHMAN, Co-Chairman Betty Fritz, owner Leo Spezie, driver Val Staker and Chairman Andy Andern take part in a trophy presentation after three-year-old Advanced Notice captured the Kiwanis Club of Delmar pace at Saratoga Raceway.



*Douglas G. Marone*

DISPENSING OPTICIAN  
DELAWARE PLAZA  
DELMAR, N. Y.

Open Daily: 10-5:30  
Evenings by Appointment  
Closed Sat: June, July, Aug.

TEL. HE 9-9191

*Hot Weather Fabrics*

*arriving daily*  
*right here in Delmar!*

SUMMER HOURS

Monday thru Friday 10:00 - 5:30

Saturday 10:00 - 4:00

Closed Tuesday

**THE FABRIC GARDEN**

—244 DELAWARE AVENUE—  
HE 9-4432

**HOLD YOUR BREATH!**

*Paul Mitchell's*

**SUMMER  
CLEARANCE SALE**

**STARTS JULY 11th**

*Tremendous Buys  
Throughout The Store*

99 DELAWARE AVENUE  
ELSMERE, N.Y.

Phone 439-3218

*Paul Mitchell's*  
MEN'S WEAR

Convenient  
Layaway



## LETTER

To the Editor:

I noticed in a story in The Knickerbocker News of June 29, in a report on the results of the recent primary elections, that a Mr. William Schoonmaker, fresh from his success in maintaining an unbroken series of defeats, now is critical of "the electorate" for the latter's lack of appreciation for the committeeman's place in the affairs of the party.

To quote Mr. Schoonmaker (who was defeated in his effort to win a nomination for committeeman in Bethlehem's 9th Election District) in a post-election effusion: "Most of the electorate doesn't appreciate the committeemen's importance in

relation to the failure of the Republican Party in Albany County."

Mr. Schoonmaker may be correct in his claim that the electorate — he means us voters — are unappreciative because they didn't vote for him, but the election results in the 9th District prove we aren't stupid!

(Name Submitted)

## Band Concert Tonight

July 7 Thursday 7:30 P. M. —  
Slingerlands Playground  
July 14 Thursday 7:30 P. M. —  
Glenmont Playground  
July 21 Thursday 7:30 P. M. —  
High School Parking Lot  
July 28 Thursday 8:30 P. M. —  
Jr. High Parking Circle

## L.J. MULLEN PHARMACY

*At Your Service*

*365 Days of the Year*

Now a complete film and  
camera department. Kodak

Instamatics . . . Camera

Cases . . . Color processing

by Kodak of Rochester

only . . . 24-hour

**Black & White Service.**

256 Delaware Avenue

Elsmere, New York

PHONE 439-9356

General InsuranceTime PaymentsSurety Bonds**Frank G. Coburn, Inc.**

283 Washington Ave.

Albany, N.Y.

Phone Albany HO 3-4277 - 8-9

**It Starts TODAY!****Town and Tweed's Semi-Annual Storewide Clearance, with savings in Every Department.****20% to 50% off. And selected from their regular stock. You can select from a huge choice of dresses, skirts, slacks, shorts, shirts, hose, hats, bags, shifts etc. At exceptional savings.****It's a Sale A GO GO****See You There.****Almost forgot.****Complete Storewide clearance at the VILLAGE SHOP. Almost every item is on sale at savings up to 50% off.****Going? WE ARE!**Closed Mondays  
July and AugustDaily at 10 A.M.  
Evgs. Wed., Thurs., Fri.



We approve of all methods of saving . . . no matter how humble they may be. But by saving at M & F you get so much more for your money! For instance, at M & F you get 4% interest on every dollar from the day of deposit to the day of withdrawal if your account is \$25.00 or more and is open at the interest payment date. In other words, you don't lost your interest on the amount you withdraw during an interest period. And deposits made as late as the 10th of each and every month (not just the first month of each quarter) earn full interest from the first. So when your Piggy Bank is full, open a Savings Account at M & F. You'll be money ahead!

To be sure . . . bank at



**MECHANICS & FARMERS**  
**BANK OF ALBANY**

Downtown: 63 State Street    Uptown: 1084 Madison Avenue  
Stuyvesant Plaza: Western Avenue at Fuller Road  
Colonie office: Wolf Road

Member Federal Deposit Insurance Corporation  
and Federal Reserve System

## Picnic

The Annual picnic of the Ladies' Auxiliary of the Delmar Fire Department will be held July 14 at 6:30 P.M. at the residence of Mrs. Marie Wright.

## Tennis

The Bethlehem Tennis Association and the Bethlehem Recreation Program have announced plans to form men's and women's tennis teams for competitive matches with groups from local country clubs and nearby communities.

Registration for adults is scheduled for 7:30 P. M. July 6 at the Junior High School Youth Center in Delmar. Those unable to attend are asked to contact William Fuller, 439-4987 or Robert Foland, 439-4870.

## Retiree

William C. Widdowfield, chief engineer for the Eastern Divi-



William Widdowfield

sion of Niagara Mohawk Power Corporation, has retired after 30 years service with the utility.

Mr. Widdowfield, who lives at 244 Murray Avenue, Delmar, joined Niagara Mohawk in 1936 at Buffalo as an electrical engineer.

He subsequently served as



## Annual Summer Clearance SALE

*(Now in Progress)*

## Reductions to 50%

DRESSES, SKIRTS,  
SLACKS, SHORTS,  
BLOUSES



and Layaways  
Available.

Open Daily 10 to 6  
Wed., Thurs., Fri.  
evenings till 10 p.m.

**SALE FINAL CLEARANCE SALE**  
ON ALL  
**Spring & Summer Millinery**  
WONDERFUL  
VALUES  
*Anne's*  
Hat Box  
and  
Accessories  
4 Corners, Delmar  
1/2 off Summer Jewelry  
Store Hours during July & Aug.  
10 to 5:30 - Friday 'til 9  
Saturday 10 to 1 P.M.

**DINE OUT HERE!**  
**La Casa**  
RESTAURANT  
(FORMERLY ALTERIS)  
South 5 miles from Albany on Route 9W, turn left at R.R. bridge  
on Thatcher Street, Selkirk, N.Y.  
CALL RO 7-9045  
Open Daily 11:30 A.M. to 10 P.M. - Closed Mondays  
WE SERVE ALL LEGAL BEVERAGES  
- "TAKE OUT" ORDERS -

after  
9 months



On September 25th, 1965, we opened our Colonie office at 8 Wolf Road.



During the past nine months we have learned that HOME SAVINGS BANK services in a well staffed, attractive and well-located office will be used.

THE FOLLOWING FIGURES PROVE THIS CONCLUSIVELY:

SEPTEMBER 25th 1965 thru JUNE 24th 1966

ACCOUNTS OPENED	771
INITIAL DEPOSITS	\$1,627,806.93
DEPOSIT INFLOW	\$ 287,319.12
TOTAL DEPOSITS (June 24, 1966)	\$1,915,126.05
AVERAGE DAILY ITEM COUNT (all items by months)	1st Month ..... 72 9th Month ..... 108 % Gain ..... 50%

*This is what a SAVINGS BANK means to an area . . .*

- ... and how a SAVINGS BANK can meet banking needs of a growing community.

*This is what the Home Savings Bank is doing in Colonie . . .*

- ... the only SAVINGS BANK in this burgeoning town.
- THIS IS GROW-POWER generated by SERVICE.

*Savings accounts with the "HOME" are earning dividends . . .*

- ... at the highest rate paid in the area—

**4½%** PER ANNUM

COMPOUNDED QUARTERLY

Anticipated for the quarter beginning July 1, 1966 based on continued favorable earnings. The dividend for the quarter ending June 30, 1966 is at the rate of 4½% a year.

We soon will be opening our lovely new permanent office at 34 Wolf Road directly across from Macy's.

**HOME SAVINGS BANK**

94 YEARS OF SERVICE TO SAVERS 1872-1966

• MAIN OFFICE  
11 No. Pearl St.

CENTRAL AVE. OFFICE  
163 Central Ave.

COLONIE OFFICE  
Wolf Road

MEMBER OF FEDERAL DEPOSIT INSURANCE CORPORATION



a designer and general engineer at Buffalo until 1952 when he was transferred to Albany as assistant division engineer of the Eastern Division of Niagara Mohawk. He was named assistant chief engineer in 1956 and chief engineer in 1962.

## Meeting

Selkirk Fire Company No. 2 Ladies' Auxiliary will hold its regular monthly meeting in the Glenmont firehouse on Tuesday, July 12 at 8:00 P. M.

On the evenings of July 29 and 30 and August 5 and 6, the firemen will be holding their annual

## Richard Petty David Pearson

LUND, BAKER, DIERINGER, PISTONE, PANCH, ALLISON, HYLTON, SCOTT, PUTNEY

and a host of other Daytona stars



Late Model '66 - '65 - '64 Cars  
Plymouth, Ford, Dodge, Mercury

## Grand National

100-MILE CHAMPIONSHIP

## Stock Car Race

Thur. Nite, July 14

Time Trials 7 PM - Race 8:30 PM

Rain Date: July 15, 8:30 PM

ROOM FOR ALL  
NO SEATS RESERVED

Adults, \$4 - Child 5-12, \$1

## Fonda Speedway

Fairgrounds Fonda, N. Y.

Fair on the firehouse grounds.  
The ladies will be running a

game booth and a White Elephant Sale.

When you buy diamonds...  
you owe it to  
yourself to compare!

FRANK H.

*Adams*

JEWELERS - SILVERSMITHS

Cor N. Pearl &  
Steuben Sts  
Albany

Open Thurs, Evenings

Call HO 3-3278



**BETHLEHEM**

**ASSOCIATES INC.**

**TRY ONE OF OUR BRICK  
PATIOS FOR SUMMER  
ENJOYMENT**

"New Lawns Our Specialty"

P.O. BOX 94

DELMAR, NEW YORK

439-2074 - If no Answer 439-4606

**SUMMER SALE**

**SAVINGS FROM 10 to 40%**

On Handmade Imported Oriental Rugs

Famous Name Broadloom Carpet

Hand Made Carpeting from India

Over 1000 rugs to choose from

**KERMANI & SCHENECTADY**

3905 STATE ST., SCHENECTADY

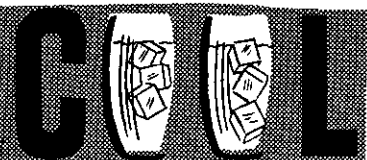
**EX 3-6884**

Mon.-Fri. 10:00-5:30

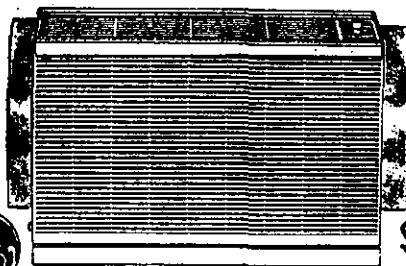
Tues. & Thurs. 'til 9

Closed Saturdays during July  
& August - terms available

You never  
had it so



**Amazing  
low price!**



**\$139<sup>95</sup>**

*Thinette* **Bedroom Air Conditioner**  
**Installs Instantly...cools quietly!**

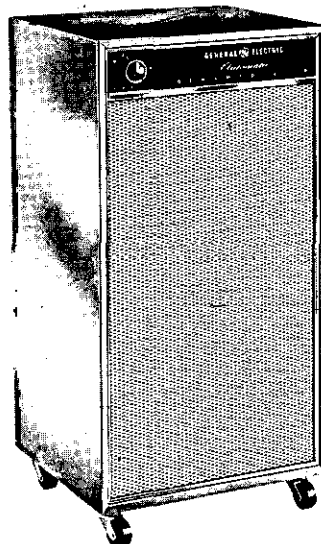
Sizes for all rooms.

Never before an air conditioning value like this - a G-E quality-built bedroom air conditioner with 5000 B.T.U.'s of cooling power, at a price you wouldn't have believed possible! Easy to handle, easy to install, easy to enjoy... take one home today!

Install it in minutes. Lightweight, with built-in side-closure panels, for quick, do-it-yourself installation.

Fits most windows. Fits easily in sash windows from 26" to 39½" wide. Just slide out the side panels..

**Dehumidifiers**



**IDEAL FOR DAMP BASEMENTS,  
PLAYROOMS, WORKROOMS**

**ONLY \$95<sup>00</sup>**

**AUTOMATIC MODEL DA-1**

**the Carriage Stop**

Another Main Care Service

339 Delaware Ave.

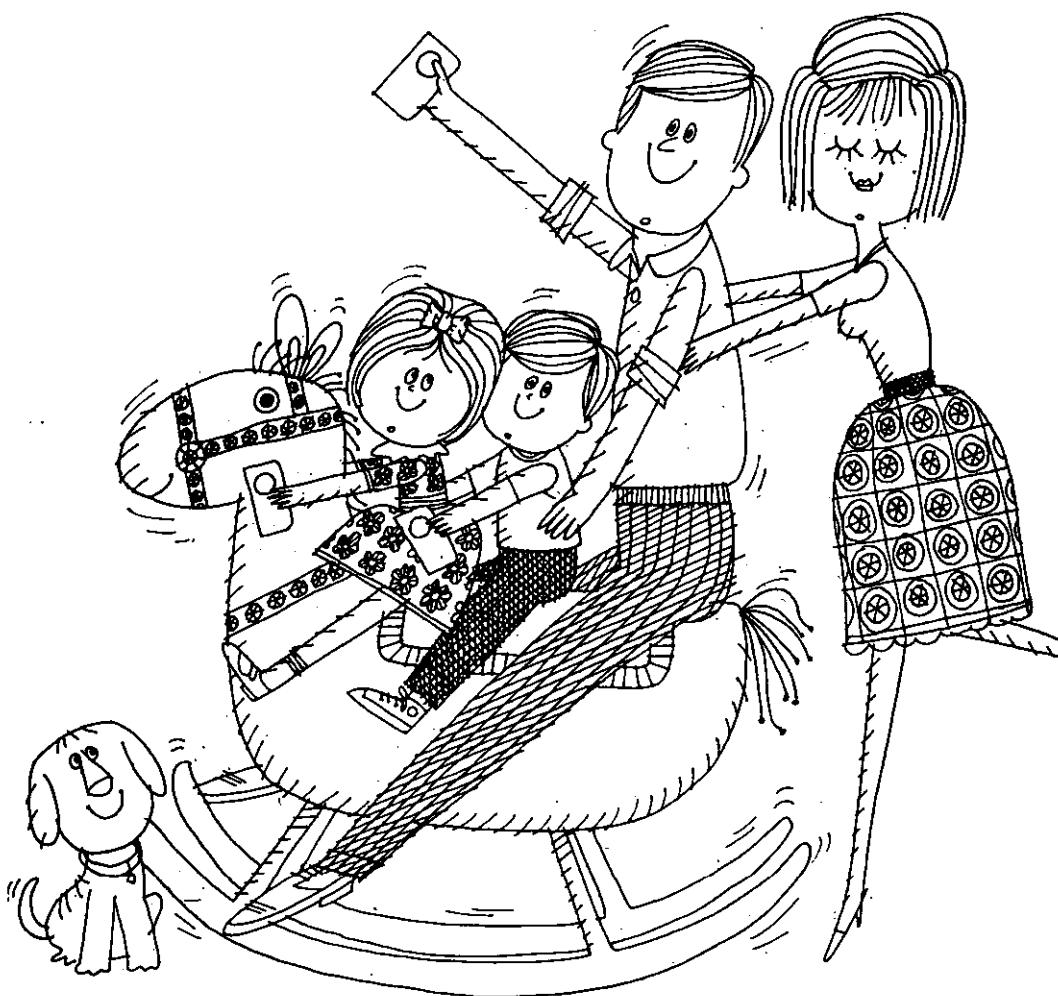
439-2430 Delmar





# More for savers!

**YOUR SAVINGS ACCOUNT** at National Commercial Bank not only earns **interest from day of deposit**, paid quarterly, but **you get 108 "bonus days"** a year because deposits made by the 10th of each month earn interest from the 1st. Save by mail. We pay postage both ways. Or use our **Automatic Savings Plan**, a sure way to save successfully and easily. At NCB you can do **all** your personal and business banking under **one** friendly roof. Make saving a family habit at the bank that can do **more** for you . . . at National Commercial, your **FULL SERVICE BANK**.



## DELMAR

BECKERS CORNERS  
Mondays, Wednesdays  
9 to 11 a.m.

## ELSMERE

BERNE  
Tuesdays, Fridays  
3 to 5 p.m.

WESTERLO  
Mondays, Wednesdays  
Noon to 2 p.m.



NATIONAL  
COMMERCIAL BANK  
AND TRUST COMPANY

MEMBER FEDERAL DEPOSIT INSURANCE CORPORATION

**FULL SERVICE BANKING** through more than 50 offices in Northeastern New York



DR. DON HILLIS, Associate Director of The Evangelical Alliance Mission and former missionary to India, will speak at Pinnacle Camp above Thatcher Park July 10 through 15. Services at 11 A. M. and 7:45 P. M. with an additional Sunday program at 4 P. M. are open to the Public.

## New Exhibit

Original Paintings by Norman Rockwell are currently featured in the Community Exhibit Room at City and County Savings Bank. The presentation was announced by Frederick W. Stolz, bank president.

One of the country's best known artist-illustrators, Norman Rockwell makes his home in neighboring Stockbridge. His illustrations have frequently



## TOLL GATE

Slingerlands



**Banana Split  
Makes a Hit!**



Take-home  
orders our  
specialty.

Hand Packed Bulk Ice Cream





SWIFT'S PREMIUM  
**DAISIES**  
**79¢**  
lb

SALAD DRESSING  
**MIRACLE WHIP**  
qt. jar  
**49¢**

GRAND UNION-REG. OR THIN  
**SPAGHETTI**  
**5 \$ 1.00**  
1-lb. pkgs.

KRAFT-PARKAY-QUARTERS  
**MARGARINE**  
1-lb. pkg.  
**28¢**

CHICKEN OF THE SEA-LIGHT CHUNK  
**TUNA FISH**  
**3 \$ 1.00**  
6 1/2-oz. cans

**FREE 50 EXTRA BONUS STAMPS**  
With this coupon and the purchase of  
One 1 lb. package Grand Union Sliced  
**BOLOGNA**  
REDEEMABLE AT GRAND UNION  
COUPON GOOD  
Thurs., Fri., Sat., July 7, 8, 9  
(LIMIT—1 COUPON PER CUSTOMER)

U.S.D.A. CHOICE  
**THE BIG DIFFERENCE**  
IS GRAND UNION  
**MEATS**

tender-grown  
Swift's  
Premium  
FRYING CHICKEN

What makes our chickens so special? We coddle them. Make sure they're raised with tender loving care. Special diet. Special breed. Specially selected. We pick only the tender, plump poultry. Clean . . . fresh. Swift calls them Tender-Grown. We call them delicious.

SWIFTS PREMIUM

**Chickens**

IDEAL FOR FRYING BAKING OR BARBECUING

2 3/4 lb. avg. wt. WHOLE  
**29¢**  
lb

**CUT UP** lb **33¢**



*Bing*  
**CHERRIES**

**49¢**  
lb

CALIFORNIA FREESTONE

**Nectarines** lb **29¢**

*Double Stamps every Wed.*

WE RESERVE THE RIGHT TO LIMIT QUANTITIES

WE ARE NOT RESPONSIBLE FOR TYPOGRAPHICAL ERRORS

PRICES EFFECTIVE JULY 7 thru JULY 9



# Freikofer's

**BATTER WHIPPED SUNBEAM BREAD**  
NO HOLES! NO STREAKS!

PHONE **HO 3-2221**

**FOR DAILY HOME DELIVERY . . .  
OF DELICIOUS BREAD, ROLLS, CAKE**

## FEATURE OF THE WEEK

### Summer Suggestions

Beat the heat with Salad and Rolls from our large selection.

Butter Parkerhouse	Pan	Butter	Cloverleaf
Hamburg Rolls	Hard Seed Rolls	Hot Dog Rolls	

### THURSDAY

July 7

- ☐ CHOCOLATE RING ..... 69c
- ☐ Strawberry-Rhubarb Pie ..... 74c
- ☐ Bobka ..... 59c
- ☐ Glazed Donuts ..... 44c
- ☐ Soft Molasses Cookies ..... 39c
- ☐ Sliced Pumpnickel ..... 31c
- ☐ ● King Size (in the bag) ..... 31c

*Little League Favorite!*

**CINNAMON  
CRUNCH BUNS ..... 44c**

Makes a hit every time

### FRIDAY

July 8

- ☐ RASPBERRY PIE ..... 74c
- ☐ Apple Nut Buns ..... 39c
- ☐ Jelly Donuts ..... 44c
- ☐ Date Nut Loaf ..... 49c
- ☐ Hermits ..... 39c
- ☐ Bronx Rye ..... 31c
- ☐ ● Pane Italian ..... 29c

*Swimmer Special!*

**FAMILY  
COFFEE CAKE ..... 98c**

Watch the gang  
"dive" into this one

### SATURDAY

July 9

- ☐ COCOANUT CREAM  
LAYER ..... 79c
- ☐ Lemon Meringue Pie ..... 69c
- ☐ Cinnamon Raisin Buns ..... 44c
- ☐ Dunketts ..... 32c
- ☐ Maple Layer ..... 59c
- ☐ Canadian Oat Bread ..... 31c
- ☐ ● Rite Diet ..... 32c

*For the Arm Chair Athlete!*

**POTATO  
CHIPS ..... 79c**

Enough for a double-header

### MONDAY

July 11

- ☐ PEACH PIE ..... 69c
- ☐ Cinnamon Curl Buns ..... 39c
- ☐ ● Old Fashioned Donuts ..... 33c
- ☐ Pound Cake ..... 39c
- ☐ Jelly Roll ..... 49c
- ☐ ● Raisin Bread ..... 35c
- ☐ Salt Free Bread ..... 31c

*At the 19th Hole!*

**PUMPERNICKEL  
BREAD ..... 31c**

Great for a sandwich

### TUESDAY

July 12

- ☐ ALMOND TOFFEE RING ..... 69c
- ☐ Streussel Buns ..... 49c
- ☐ Danish Donuts ..... 44c
- ☐ Chocolate Creme Cups ..... 39c
- ☐ Maple Walnut Sheet ..... 59c
- ☐ Salted Rye ..... 29c
- ☐ ● Sunbeam Bread ..... 26c

*Back-Yard Campers!*

**HOT DOG AND  
HAMBURG ROLLS (8) ..... 29c**

Enjoy the fun of camp  
—at home

● Indicates items available every day. The above is not a complete list of available items.  
For further information ask your Routeman or call the Bakery.

# Freikofer's

**QUALITY BAKING  
IS OUR TRADITION**

appeared in nationally known magazines, "Look" and the Saturday Evening Post" among them.

Shown through the courtesy of The Berkshire Museum, Pittsfield, Massachusetts, the exhibition includes the famous paintings of the four freedoms — "Freedom from Fear," "Freedom from Want," "Freedom of Religion" and "Freedom of Speech."

The paintings can be seen at the bank's Downtown Office at 100 State Street, Albany, weekdays from 9:00 A. M. to 3:00 P. M. and, in addition, Thursdays until 8:00 through July 21.



Ivon A. English, son of Mr. and Mrs. William L. English, 56 Dumbarton Drive, Elsmere was graduated from Michigan State University, recently with a B. A. in Hotel, Restaurant, and Institutional Management. Ivon has been awarded a Graduate Assistantship and plans to return to Michigan State University in the fall and to get his Masters Degree in Business Administration.



**YOUR**

**JACOBSEN**

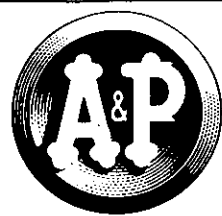


**LAWN EQUIPMENT**

**DEALER**

14 Booth Rd., Delmar

**HE 9-9212**



# Having a Picnic? WE GUARANTEE EVERYTHING... but the Weather!

Here's a handy "Picnic Pick List" we hope will make this weekend's picnic the one picnic when nobody says, "Damn it we forgot....."

MEAT DEPT.	BEVERAGES	DAIRY DEPT.
Cold Cuts —	Yukon Club Canned Soda —	Cheeses —
Frankfurters —	Our Own Instant Tea —	Butter —
Ground Beef —	<b>Cheeri Aid Drink Mix</b> —	Eggs —
Chicken —	Fruit Juices —	Milk —
***	***	***
JANE PARKER DEPARTMENT	ANN PAGE PICNIC ITEMS	FRUIT & VEG. DEPARTMENT
Rolls —	Salad Dressings —	Tomatoes —
Breads —	Ketchup & Mustard —	Lettuce —
Cookies —	Barbecue Sauce —	Radishes —
Potato Chips —	Olives —	Fruits —
Cakes —	Peanut Butter & Jelly —	Cucumbers —
Pies —	Beans —	Watermelons —
MISCELLANEOUS		
A&P Charcoal —	Charcoal Lighter —	Crackers —
Paper Plates —	Sandwich Wrap —	Pickles —
Paper Cups —	Napkins —	Aluminum Foil —

As always, everything you buy at A&P is completely guaranteed to please. We're sorry we can't guarantee the weather—but, with you, we'll wish for a perfect day. Lots of us will be picnicking, too.

P.S. Don't forget the can opener.

COPYRIGHT © 1966, THE GREAT ATLANTIC & PACIFIC CO., INC.

JANE PARKER  
**WHITE  
BREAD**

**2** 1 lb. lvs. **39¢**  
IN REUSABLE WRAPPER

Fresh From Jane Parker!

JANE PARKER  
**FRANKFURTER or  
SANDWICH  
ROLLS** Pkg. of 8 **26¢**

**LEMONADE** SENECA REG. OR PINK **10** 6 oz. cans **99¢**

JANE PARKER LARGE 8 INCH  
**CHERRY PIE** 2 for **99¢**

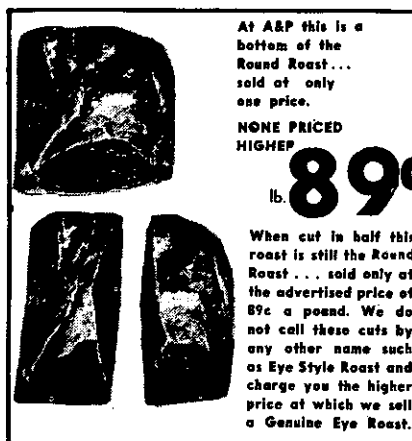
JANE PARKER  
**ANGEL FOOD** 10 oz. pkg **39¢**

JANE PARKER PLAIN  
**VIENNA BREAD** 2 1 lb. lvs **49¢**

JANE PARKER  
**POTATO CHIPS** 1 lb. bag **59¢**

## "Super-Right" Meats!

# "Super Right" ROUND ROAST



At A&P this is a bottom of the Round Roast... sold at only one price.

NONE PRICED HIGHER

**89¢** lb.

When cut in half this roast is still the Round Roast... sold only at the advertised price of 89¢ a pound. We do not call these cuts by any other name such as Eye Style Roast and charge you the higher price at which we sell a Genuine Eye Roast.

**BONELESS  
TOP OR  
BOTTOM**

**89¢** LB.

NONE PRICED HIGHER

SUPER RIGHT TOP ROUND OR  
**CUBE STEAK** **\$1.09**

U. S. D. A. INSPECTED  
**CORNISH HENS** lb. **49¢**

SWIFTS PREMIUM  
**CANNED HAM** 3 lb. tin **\$2.79**

SUPER-RIGHT 14 to 18 lb.  
SHORT SHANK FULLY COOKED  
**Smoked Hams**  
Shank Portion lb. **39¢** Butt. Portion lb. **49¢**

SUPER RIGHT  
**SIRLOIN ROAST** lb. **99¢**

U. S. D. A. INSPECTED  
**CHICKEN** Breast or Leg Quarters lb. **43¢**

SUPER RIGHT COUNTRY STYLE  
**SPARE RIBS** lb. **65¢**

SUPER RIGHT  
**Ground Chuck**  
NONE PRICED HIGHER lb. **79¢**

**FRANKFURTERS** SUPER RIGHT lb. **65¢**

Tasty Pickin's—Fresh Produce!

**GRAPES** SWEET, SEEDLESS lb. **35¢**

**BLUEBERRIES** CULTIVATED Pt. **39¢**

**GREEN BEANS** FRESH lb. **19¢**

**CUCUMBERS** FRESH & CRISPY 2 for **25¢**

TANGY LIMES 6 for **29¢** LARGE JUICY LEMONS 12 for **49¢**

Good Buys on Fine Groceries!

**DISH DETERGENT** FLISK 1 qt. 16 oz. bot. **49¢**

**INSTANT COFFEE** A&P BRAND 10 oz. jar **\$1.09**

**NESTLES QUIK** CHOCOLATE 4 lb. pkg. **\$1.39**

**SALAD DRESSING** SULTANA qt. jar **39¢**

**CHARCOAL LIGHTER** MARVEL qt. can **39¢**

**CHARCOAL** A&P BRAND BRIQUETS 10 lb. bag **59¢**

**WELCHADE** REGULAR OR LOW CALORIE 1 qt. 14 oz. Can. **39¢**

## CAT HAVEN

FOR CATS ONLY

Individual Care in Private Home

Ethel Fay ROckwell 5-2715

ON THE  
**MOVE**

**WANT ADS**  
ON TARGET EVERY TIME  
439-4949

# THINK FIRST

YOU CHOOSE  
AT

## FIRST NATIONAL SAVINGS BONDS

**5%**  
PER YEAR

### HIGH SPECIAL RATE

This savings bond is sold at all offices in multiples of \$100 with a \$2,500 minimum and bonds are self-renewing — May be cashed 12 months after purchase or on any 12 months anniversary thereafter without notice. The 5% rate is not an anticipated dividend, it's a fixed bank guaranteed return on your savings investment.

**YOUR 5% PER YEAR  
IS PAID BY CHECK ANNUALLY**

**4 1/2%**  
PER YEAR

### FLEXIBLE HIGH RATE

Sold at all offices in multiples of \$100 with a \$500 minimum, self-renewing. May be cashed 6 months after purchase or on any 6 month anniversary thereafter without notice.

**YOUR 4 1/2% PER YEAR  
IS PAID BY CHECK SEMI-ANNUALLY**

Bonds and rate of interest are backed and guaranteed by First National.  
And every depositor is insured by the Federal Deposit Insurance Corporation

### Telephone

SCOTIA 377-6491  
NISKAYUNA 393-3684  
COLONIE 869-8455  
GUILDERLAND 489-4408



MEMBER  
FEDERAL DEPOSIT INSURANCE CORPORATION

### of SCOTIA

MOHAWK AVE. at TEN BROECK

### NISKAYUNA

BALLTOWN ROAD at NOTT ST.

### COLONIE

CENTRAL AVE. at KILLEAN PARK

### GUILDERLAND-WESTMERE

KARNER RD. at WESTERN AVE.

FOR ANY BANKING INFORMATION STOP IN  
or CALL THE OFFICE MOST CONVENIENT

**AND SOON A NEW GLENVILLE OFFICE**

## Champ

John Stevenson, Bethlehem Central's tennis ace, closed a



John Stevenson

three-year scholastic tennis career in winning the Albany Junior Chamber of Commerce Boys' Tournament at the State University courts on June 25, and the Albany YMCA Capital District High School Tournament at Ridgely Park on June 26.

Stevenson won the Junior Chamber of Commerce meet over Richard Andres of Vincennes Institute 6-1, 6-0, and defeated Selden Cray of Niskayuna for the YMCA championship 6-4, 6-1. He won these same tournaments last year, and was a semi-finalist in both as a sophomore.

John ended the 1966 season with a 27-2 record. His two losses occurred at the State Intersections held June 10-11 at West Point where he placed ninth among the competing players from all parts of New York State.

During his three seasons at Bethlehem Central, Stevenson was the team's number one player, and also was the top player in the Suburban Council league where he had a 34-1 overall record. The team's three-year Suburban Council record was 35-1.

## Selkirk Yards

Great metal jaws loom up from the middle of a railroad track. As a freight car rumbles along the track, the jaws press against

a wheel and retard the speed of the car.

A scene from a secret agent's adventures?

Not at all. The jaws — called retarders by the experts — will be in action at the New York Central's Selkirk Yards two years from now, as part of a \$20 million electronic-controlled freight yard.

Alfred E. Perlman, railroad president, announced recently that bids for the work will be accepted immediately. By Aug. 1, grading and site work will begin, under direction of a resident engineer.

In two years, when the project is complete and the jaws appear like numerous crocodiles, a computer will be the main overseer of the entire yard operation.

The computer — to be housed in a control center resembling a modern office building — will cull information about each railroad car entering the yards. Weight of the car, amount of the load, weather conditions and equipment such as roller bearings on the car. In addition to making a "decision" the computer will determine the correct speed at which each car should travel as it rolls down the tracks, and will activate the metal jaws to slow the car when needed.

The "jawing" will take place along 160 mi. of tracks, arranged like veins of a leaf. As the freight cars roll down the track, they are shuttled to the appropriate subtrack and hitched to a train headed toward a specified city.

Improvements will triple the yard's size, and at least double the capacity — now 3,000 cars. Most of the new installations will be built on property already owned by the railroad, with the

## FOWLER'S Liquor Store

See ERNIE or GEORGE  
for BETTER SPIRITS



Elsmere - at - the - Light  
Parking right in front of store.  
HE 9-2613 "We deliver."

Chilled, ready-to-serve  
WINES & CHAMPAGNES

## SPECIAL MACHINERY BUILT TO YOUR DESIGN

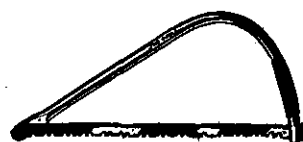
Replacement parts made or  
repaired — experimental work  
Prompt Service - Reasonable Prices

Michael Steel Fabricators  
and Welding Company

Beacon Rd. off 9W, Glenmont, N.Y.  
HO 3-2775

## For That Finished Look!

### TRUE TEMPER, SAW



Camping, pruning, general home use. Non-slip cushion grip and tubular steel, chrome-plated deep bow frame.

From \$249

### TRUE TEMPER, ROTARY TURF EDGER

Makes neat edges the easy way along walks, hedges, flower beds. Saves hours.



\$695

## DELMAR LUMBER & BUILDERS SUPPLY inc.

340 DELAWARE Ave • Phone HE.9-9968

## HOUSE OF MAPLE ... LATHAM Annual SALE Mid-Summer

SAVE on Famous Brand Name Furniture during our 19th Annual MID-SUMMER SALE... impressive savings on Early American pieces of solid maple, pine and cherry for Living Room, Bedroom and Dining Room. SAVE, TOO, on Lamps, Pictures, Bedding and Other Accessories.

Store-Wide  
Reductions  
**SAVE**  
10% to 40%

Here are Just A Few of the Famous Brand Names to Be Found at the House of Maple . . . . .

- Pennsylvania House
- Sprague & Carlton
- Cushman
- Plymwood Pine
- North Hickory

Convenient Budget Terms Available

PLENTY  
FREE  
PARKING

Shop in  
Air-Conditioned  
Comfort



*fine Colonial Furniture*  
Just South of Latham Traffic Circle

OPEN  
EVENINGS  
'TIL 9

CLOSED  
SATURDAYS  
During July & August

Home Grown

PEAS

STRAWBERRIES

John Geurtze's  
WOODRIDGE FARMS  
Route 9W  
Glenmont

exception of two small parcels to be purchased from private owners.

No estimate of the effect of new jobs was available, but a company spokesman said a major repair shop for cars and locomotives would provide some jobs. He said both new hiring and transfers would be involved.

In announcing the bid situation, Mr. Perlman described the improved Selkirk installation as the "focal point for New England, for Manhattan, for New Jersey."

## New Zoning: New Bethlehem

Officials and residents of the Town of Bethlehem are faced

today with a challenge in black and white.

It is the town's master plan, blueprint for the future.

As he presented the attractive booklet to the Town Planning

We'll make your  
motor  
sing



- \* Engine Tune-up
- \* Front End Alignment
- \* Automatic Transmission Service
- \* Modern Equipment
- \* Skilled Mechanics

## BAILEY'S GARAGE

Phone Delmar HE 9-1446  
Oakwood Rd., Elsmere

## Ed Traeger LANDSCAPING

Residential - Commercial  
Shrub plantings, new lawns,  
renovating, fertilizing, light  
grading.

Slingerlands IV 2-1794

EVERGREENS  
Blue Spruce Special  
to 18" - \$1.50, to 24" - \$2.50  
also a variety of ornamental  
evergreens grown locally at

"TIP NELSON'S NURSERY"  
32 Bender Lane, Elsmere  
Evenings and weekends  
439-1069



## KLERSY BUILDING CORPORATION

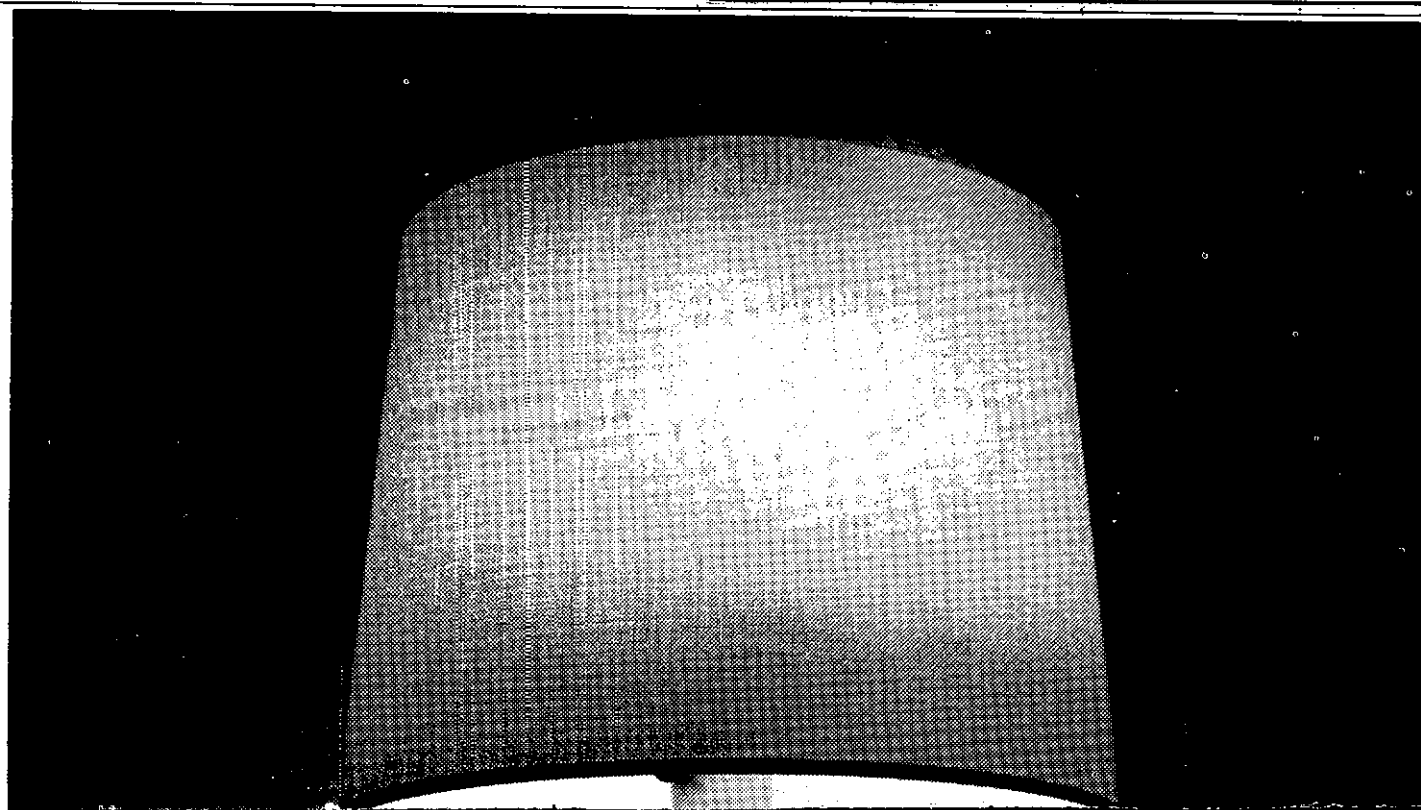
Offers new homes of Prestige  
OR a complete Alteration Department  
"from Plan to Lawn" Service.

KLERSY BUILDING CORPORATION  
AND  
GENERAL ALTERATION DIVISION

Phone for Appointment  
439-4606 439-9769



Mr. and Mrs. Ted Sumida, Oxford, have announced the engagement of their daughter, Patricia, to Dominick Matarrese of Cohoes. Miss Sumida is a graduate of Oxford Academy and is a student at Albany College of Pharmacy. Mr. Matarrese, a graduate of Albany College of Pharmacy, is manager of the L. J. Mullen Pharmacy.

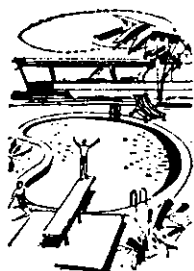




ALICE M. COLBURN, 3 Oakwood Pl., Delmar, daughter of Mr. and Mrs. C. Keith Colburn, graduated recently from Fashion Institute of Technology, New York City with an associate degree in Interior Design.

## BUSTER CRABBE POOLS

AUTHORIZED DEALER FOR  
CASCADE INDUSTRIES, INC.



Above Ground  
&  
In-Ground  
POOLS

Kits or  
Installed by  
Factory-  
Trained  
Engineers

SAUNA BATHS

**AR 3-8369**

IF NO ANSWER UN 9-6833  
421 2nd AVE.,  
WATERVLIET, N. Y.

5 P.M. FRI.  
TO  
9 A.M. MON.

**WEEKEND SPECIAL**

Rent a Car **7.95**

PLYMOUTH

Per Day  
Plus  
10¢ a Mile

For Reservation, Phone  
**IV 9-5487**

**Avis Rent A Car**

INQUIRE ABOUT OUR LOW  
TRUCK RENTAL RATES



## When this lamp goes on, the phone is ringing for a person who can't hear.

The telephone—and all it can mean—is for the handicapped, too.

For instance, in the picture above, a deaf person can "see" the phone ringing. A special switch provided by New York Telephone makes a table lamp go on and off until the phone is answered. Then to speak and listen on the phone, the deaf person communicates with flashing light signals on a Sensicall attachment developed by New York Telephone.

Another version of Sensicall uses a vibrating button, so that a deaf-blind person can use the phone, too. This is one of the many communications aids for the handicapped available through New York Telephone. Others include:

**Volume-control receivers** that amplify the incoming voice for the hard-of-hearing.

**Bone-conduction receivers** that send sound vibrations to the inner ear, enabling persons with certain types of ear damage to hear on the phone.

**Artificial larynx**, a special device that enables the voiceless to speak.

**Automatic dialers** for persons, such as arthritics, who have difficulty using regular telephone dialers.

**Signal devices:** Chimes, buzzers, lamps, bells, gongs and other devices that signal the hard-of-hearing that the phone is ringing.

If you are physically handicapped, we'll try to provide a telephone you can use. For information, please call your local telephone business office or write New York Telephone, Room 1000, 140 West Street, New York City, N. Y. 10007, for a free brochure.



**New York Telephone**  
Part of the Nationwide Bell System



Board, planning consultant Russell D. Bailey of Utica asked the board — and the community:

"What do you do with this thing? Hand it over and forget it as some communities do?"

"The plan has no magic whereby the wishes of the community come true. The people of the community have to make it come true."

The plan includes recommendations of major changes in the town's highway system, business life, park area, and goes on to suggest ways of implementing the recommendations. The most important of these is a capital improvement program.

It is suggested that a six-year program be prepared and then revised each year, with projects removed as they became a part of the annual budget, and new projects added. The plan would be approved annually just as the budget is approved.

The recommendation made in the master plan which would probably change the face of the town more than any other concerns the "Four Corners" business district in Delmar.

A three-phase reconstruction of the area would produce a 10-acre "super block" bounded by an extension of Hallwood Road, Adams Place, the Delaware and Hudson Railroad tracks, and Grove Street. This area would be reserved for a shopping and

office building center.

Becker Terrace and the Hallwood Road extension would be reserved for apartments.

As parts of the project, Delaware Avenue would be widened to four lanes with on-street parking banned; off-street parking would be provided west of Grove St. to Paddock Pl.; Kenwood Avenue would become one-way west from Delmar to Adams Place; Hallwood Road would be extended to Adams Street to provide access to parking lots at the rear of Kenwood Avenue properties; gas stations would be eliminated from the intersection; and finally, parts of Kenwood Avenue would be closed to traffic.

The well developed Elsmere business district receives less attention in the plan. However, note is made that careful control should be exercised over access to Delaware Avenue in that section.

Concerning streets and highways, Mr. Bailey says, "The pattern of arterial and major highways serving the Town of Bethlehem is mostly radial to the City of Albany and there are no ring roads to aid traffic to move across the town from one arterial to another. The highway rights-of-way are traditionally narrow."

Major needs cited are: better arterial access to and from the State Thruway interchanges;

an inner loop highway serving but bypassing the Tri-Village area connecting the Washington Avenue and the Selkirk interchanges.

Important existing roads recommended for widening are: River Road, Feura Bush Road from River Road to the New Scotland town line, and Route 396 in Selkirk.

The Delmar Bypass should be continued to connect with New Scotland road west of Slingerlands, the report adds.

Streets cited as needing improvement according to plan recommendations are Kenwood Avenue, Cherry Avenue, Elm Avenue, Adams Street, Hudson Avenue and Blessing Road.

It is recommended that an alternate access to replace Ferrbank Avenue as the route from the Delmar Bypass to Delmar be provided.

The third major area for which the master plan report makes recommendations relates to recreation facilities.

The report recommends the acquisition and development of

## THE FIRST STEEL-WALL ON-GROUND POOL

4 foot patio deck on all sides, Swing up stairs for privacy, Requires no fence or patio, Heavy duty filter, Variety of sizes and depths.

Available installed or in do-it-yourself kits (save \$900)

NO MONEY DOWN — 7 YEARS TO PAY



REYNOLDS POOL CENTER  
615 Loudonville Road, Latham, N. Y.  
(opposite Hoffmans Play Land)

OPEN: daily 9-8, Sat. 9-5, Sun. 1-8

CALL: ST 5-5010 - ST 5-1131

WIN A FREE POOL  
Nothing to buy  
Come in and enter

# 60TH BLANKET SALE

ONE WEEK ONLY... JULY 7 thru 13

Grants

• Enjoy pre-season savings on cozy blankets now!

• 50¢ DEPOSIT holds your choice on Grants Lay-Away Plan



announcing our new anticipated

# DIVIDEND INCREASE



SAVE 1.05 ON YOUR  
CHOICE OF THESE  
GRANT CREST® BEAUTIES

**Sale 3.94**

REG. 4.99

Super-nap blanket in rich  
solids. 75% rayon/25% acryl-  
ic. 72x90"; weighs 3¼ lbs.

Grants exclusive plaids in  
90% rayon/10% acrylic. 66x  
90" twin weighs 3¼ lbs.

80x90" Plaids (3¼ lbs.) \_\_\_\_\_ 5.44

GRANT CREST®  
VIRGIN ACRYLIC

**Sale 5.94**

Reg. 6.99

Lightweight comfort. 3-lb.  
weight. 72x90". 6 colors.

COTTON THERMAL

Compare at 6.99

Machine  
wash, dry. 3¼  
lb. weight. 72  
x90". 5 colors.

**Sale 4.97**

King-size cotton thermal,  
108x90", Reg. 11.99 \_\_\_\_\_ 10.88

COZY NAPPED THERMAL

Compare at 5.99

Rayon/acryl-  
ic; feels like  
hand-crocheted  
cashmere.

**Sale 4.44**

**SHEET SALE**

GRANT MAID® 130-COUNT  
WHITE MUSLIN SHEETS

**1.74**

Dependable buy every day...  
now priced for extra savings!

72x108" or  
Twin Fitted



81x108" or Double Fitted, \_\_\_\_\_ 1.94  
42x36" Muslin Cases, \_\_\_\_\_ 2 for 94¢

GRANT CREST®  
AUTOMATIC ELECTRIC  
BLANKET

Compare at \$14

80% rayon/  
20% cotton.  
72 x 84". Pas-  
tels, darks.

**Sale 9.94**

Dual control, Comp. at \$17 \_\_\_\_\_ 12.94

\*Charge-It!...No money down...up to 2 years to pay

**W.T. GRANT CO.** Your Friendly Family Store.



**4 1/2%**

compounded quarterly beginning July 1st.

■ Funds in by the 10th earn dividends from the 1st every  
month of the year. ■ No minimum, all your money earns  
the high 4½% dividend. ■ Postage paid both ways on sav-  
ings by mail. ■ Don't delay, get the big 4½% dividend on  
your savings beginning July 1st.



**WEST END FEDERAL**

SAVINGS AND LOAN ASSOCIATION OF ALBANY

854 MADISON AVENUE, ALBANY, NEW YORK, PHONE IV 9-3221



Announcing  
Our New Dividend Rate

**4 1/2 %**

PER ANNUM

Anticipated for the Quarter beginning July 1, 1966,  
based on continuation of satisfactory earnings.

PAYABLE FROM DAY OF DEPOSIT AND COMPOUNDED QUARTERLY

**EXTRA BONUS DIVIDEND DAYS**

DEPOSITS MADE  
ON OR BEFORE

**JULY 15**

WILL EARN  
INTEREST FROM

**JULY 1**

You can enjoy high earnings for your savings and other services of this Bank by mail. Just send your first deposit with the coupon and you will receive your new bank book promptly. Thereafter we pay postage on all banking-by-mail transactions.

MECHANICS EXCHANGE SAVINGS BANK  
47 STATE STREET, ALBANY, N. Y.

Enclosed is:

- ☐ Bank Check      ☐ Postal Money Order  
☐ Express Money Order      ☐ Currency  
(Send by Registered Mail)

Please open a savings account in the name or names written below.

Name

please print

Social Security No.

Name of other person if a joint account

Address

No.

Street

City

State



111 WASHINGTON AVENUE

ALBANY

**MECHANICS  
EXCHANGE  
SAVINGS  
BANK**



STUYVESANT PLAZA



47 STATE ST.

NEW YORK

MEMBER FEDERAL DEPOSIT INSURANCE CORPORATION

Since 1855... **THE FAMILY BANK** for Savings and Home Financing

playground facilities in proportion to need for these neighborhoods: Elsmere, Delmar, Slingerlands, Glenmont-Bethlehem Center, River Road, New Scotland, North Bethlehem, the North Street area, South Bethlehem and Feura Bush.

Also recommended is a park which would encircle the town's urban area.

Starting with the spaces now owned by the Bethlehem Central School District, large wooded ravines or hills park-like in character would be acquired and united by means of greenbelts.

Provided for in the plan are a series of parks and playground centers connected by a bicycle and foot path system.

The park belt would begin south of Delaware Avenue and run in a rough, oval around the Tri-Village area ending at the boundaries of the Normanside Country Club. A walk along this route would be about 2.5 miles.

The report proposes a planned neighborhood in the largely undeveloped Route 9W area. A large area lying between the Thruway and Route 9W is indicated for industrial development; Bethlehem Center would be a commercial center; and the area between Route 9W, Wemple Road and Feura Bush Road would be for residential development including high-rise apartments, town houses, and single family dwellings.

It is proposed that zoning be extended to all parts of the town; and that new subdivision regulations, a trailer ordinance, and housing code should also be adopted.

In closing his presentation of the plan to the Planning Board, Mr. Bailey said, "At some time in the next few months you should put yourself in the position of adopting this as a master plan.

"As rapidly as this town is developing, this plan won't be too valid in three years. By then I hope you'll have done some of these things and be ready for the next stage."

That is Mr. Bailey's challenge to Bethlehem.

SUBSCRIBE TO THE SPOTLIGHT

**TRI-VILLAGE  
LITTLE LEAGUE**


(Standings are as of July 2)  
Intermediate League  
AMERICAN

	W	L
Farm Family	10	3
Hilchie	9	4
Patterson	8	5
Gallagher	7	6
DiNapoli	5	8

## NATIONAL

Livermore	6 1/2	6 1/2
Main Bros.	6 1/2	6 1/2
Mullen	6	7
Abbey Rug	5	8
Albany Public Mkt.	2	11

## Klarsy

Giants	10	3
Mets	10	3
Red Sox	8	5
Cubs	7 1/2	5 1/2
Yankees	7	6
Indians	6	7
Cardinals	5	8
Orioles	5	8
Pirates	4 1/2	8 1/2
Tigers	3	10



GOOD PITCHING has kept home runs to a minimum in Hudson Valley Little League this year, but Bob Johnson succeeded in getting two in consecutive turns at bat. His total for the season so far: 3.



READ  
THE SPOTLIGHT  
WHILE ON  
VACATION

## POWER LAWN MOWER Cranks shafts Straightened

● Don't discard your lawn mower when you have hit an obstruction and bent your crankshaft. Bring it in or call us. We'll straighten it quickly and perfectly. Cost only \$10.

**LAWN BOY and TORO**  
*Sales and Service*

**TAYLOR & VADNEY**

303 CENTRAL AVE. HE 4-9183  
OPEN EVERY NITE 'TIL 9

## HUSTLER GOLF

**Are Stainless Golf Clubs Really Better?**

SURVEYS THE COUNTRY OVER SAY THAT  
STAINLESS ARE BEST IN THE BUSINESS

When you're a small company you must have  
a better product . . . and care more about  
your customers and their needs.

**"WE HAVE AND WE DO"**

The finest in equipment for the golfer—  
custom-built stainless irons—woods—putters—  
bags—balls—etc.

Complete Repairs on All Types of Clubs — Used Equipment  
Open Daily 10 til 5 P.M.—Friday 'til 9 P.M.

**Wultex Bldg., Troy, N. Y.**  
**ASHLEY 4-1273**

U.S.D.A. CHOICE

**Bottom Round Roast** lb. **83¢**

**Eye Round** lb. **\$1.09**

**Top Round or  
Cubed Steaks** lb. **\$1.09**

**Round Ground** EXTRA LEAN lb. **83¢**

**FRANKS** FIRST PRIZE 1 lb. pkg. **83¢**

MEAT DEPT. PHONE: 439-9419

Custom  
Cut and  
Wrapped

### FREEZER BUYS

Arm Chucks of Beef

lb. 49¢

HINDQUARTER lb. 69¢ FOREQUARTERS lb. 49¢

SIDES OF BEEF

U.S.D.A. CHOICE

lb. 59¢

Special  
Freezer  
Paper Used

CHICKEN OF THE SEA

**CHUNK TUNA**

can **29¢**

**JELLO**

Assorted flavors

2 pkgs. **15¢**

CROSS & BLACKWELL

**ASSORTED RELISHES**

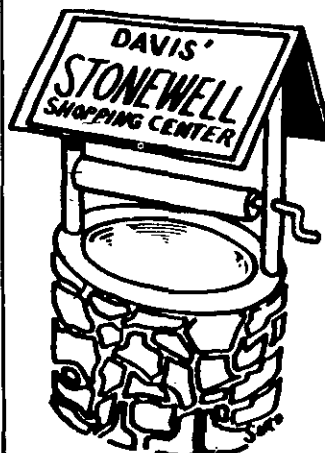
jar **15¢**

## PRODUCE SPECIALS

**CARROTS**

CALIFORNIA

2 cello bags **29¢**



JUNCTION HIGHWAYS 85 & 85A  
NEW SCOTLAND, NEW YORK

HE 9-5398

Open Daily and Sundays  
10 A.M. to 10 P.M.

Reserve right to limit quantities

Prices effective: Thurs., Fri., Sat.  
(7/7, 7/8, 7/9)

Michelson's Shoes

**SHOE SALE of the YEAR****Quality Shoes at Tremendous Savings!****EDWARDS Boys Shoes** Reg. to 10.95 Now **\$6.45**

**Girls' Shoes** Reg. to \$9.99 **NOW**

- Black Patent • Gillie Ties
- White Patent • Oxfords
- White Leather • Sandals

Sizes: Infants' 4 to growing girls' size 10

**\$3.99 - \$4.99**  
**5.99 - 6.45**

**SPECIAL GROUP  
GIRLS' SHOES**Reg. to 8.99 Now **2.99****LEATHER  
SANDALS**Reg. to 5.99 NOW **\$2.99 & 3.99**

NOT ALL SIZES...ALL SALES FINAL

**\*Michelson's**  
"where fit comes first"

**211 CENTRAL AVE.**  
**OPEN EVES. 'TIL 9 P.M.**

Our Only Store

**don't  
wait!**



**SAVINGS RECEIVED  
BEFORE  
JULY 10**

**Earn 4 1/2% from  
JULY 1**

Anticipated (providing  
satisfactory earnings continued)  
compounded and credited quarterly  
**FREE** Save-by-Mail Service.  
Postage paid on all trans-  
actions by mail.

Member  
Federal  
Savings  
&  
Loan  
Insurance  
Corporation

**PARK FREE** at Howard  
Parking Plaza, Corner  
Lodge & Howard Streets.



**The PERMANENT  
SAVINGS & LOAN ASSOC.**

91 STATE STREET, ALBANY, N. Y.

**'What PRIDE Means To Me'**

"What PRIDE Means To Me" an original essay written by A3C Speros Pascalides, won first prize in the Transportation Squadron Wives' sponsored PRIDE Essay Contest.

A1C Walter M. Stephens and A2C Lawrence T. Taylor received second and third place honors respectively.

The winners were announced at a squadron party held last Friday evening at the noncommissioned officers open mess.

Airman Pascalides winning entry "What PRIDE Means To Me" was chosen over 150 entries submitted by Transportation Squadron personnel.

The winning essay reads:

"PRIDE, a small word not used often enough by those who prefer slang. I ask myself, can such a small word mean anything special to me?"

Webster's Dictionary defines the word "PRIDE" as exaggerated self regard. Before I entered the Air Force, I had very little use of the word. Of course I used it but no this small word has become a way of life. When I became acquainted with the Strategic Air Command's definition. "Professional Results In Daily Effort", I said, "So what"?

What does this have to do with my future? Then I started to wise up to the new definition and now I take Pride in many things and especially in myself and the way I perform my work. Pride has brought about a sort of self competition between myself and my fellow airmen. Mainly, it has developed a meaning of self accomplishment in myself, and a feeling of better achievement on my job, daily activities, and education. It has brought me dignity and self-respect.

It now means to me just more than getting by slightly. I have begun to take more interest and skill in whatever I undertake. I have attained a feeling of being more perfect than I ever was and am proud of myself! PRIDE is a carry-over of honesty, know-

**Myers**  
ALBANY

**SHOP MYERS  
DOWNTOWN**

**FOR OUTSTANDING VALUES  
DURING OUR GREAT ANNUAL**

JULY

**WHITE SALE**

Give yourself and your home a LIFT! Take advantage of this BIG Myers summer event. Every bit of our White merchandise has been marked down for Summer Savings! This is the time for replacing (or adding to) sheets, pillow cases, and hundreds of other items.

Use Your Convenient Myers  
**CHARGE ACCOUNT**  
and

Handy, Downtown Park-&amp;-Shop Lots

ledge and self respect and working as both an individual and as a unit. In my daily tasks, even small ones, appearance, cleanliness, my room appearance, taking care of my personal belongings and Government property. Before I do anything, I ask myself, "Did I take PRIDE in what I have just done?" Everything you do reflects an image onto other people and if you take PRIDE in what you do, people will take PRIDE in you.

This is what PRIDE means to me as best I can explain. However, the results of PRIDE are not explained, they are apparent in respect, promotions and mainly in myself. PRIDE is my way of life and I am proud of it.

Speros Pascalides is a graduate of the class of 1965 at Bethlehem Senior High School. He did his basic training at Lackland AFB, Lakeland, Texas. He was transferred to Malmstrom AFB, Malmstrom, Montana, where he is with (SAC) Strategic air command. He is the son of Mr. and Mrs. Frank Pascalides, 109 Mosher Road, Delmar.

*Accent on Beauty*

by Alicia Duval  
Beauty Consultant  
to Cosmetically Yours



With the accent on colorful lips again, yours can be beautifully in style if cared for properly.

Protecting your lips is a 24 hour job. Soft, creamy lipstick should be worn as a protective cover against chapping, even at bedtime. Nighttime lipstick should be applied and lightly blotted for best protection. This

procedure will not only keep your lips soft, but will make you delightfully fresh-looking in the morning.

For shapely lips, a professional lip brush is indispensable. For example, Brush-Fire lip color, recently introduced by Cosmetically Yours, is the perfect answer. The compact case contains lip color, mirror and brush. Its special formula was developed as a safeguard against sun, wind, salt water and summer dryness.

Now, take brush in hand and begin lining your upper lip from the center, extending the line to the corners of your

mouth. Repeat the same step on the lower lip. Then fill in the center of your mouth with a slightly lighter shade. Result: a beautifully sculptured mouth.



N.Y.S. OFFICIAL  
Inspection Center

**L & H**

Brake & Front End Service  
100 Adams Street, Delmar  
HE 9-3083

Alignment  
Wheel Balance  
Mufflers & Tail Pipes  
Brakes  
Front End  
Springs

JULES SHOES

# SUMMER SALE

SHOES FOR THE WHOLE FAMILY

*For the Ladies*

**HEELS**

HI OR MID

**\$8.00**

(Value to \$12.00)

**FLATS AND SPORTS**

LEATHER FOR SPRING & SUMMER

**30% off**

**SANDALS**

ITALIAN IMPORTS

**\$4.00**

**KEDETTES**

**\$3.00 & \$4.00**

*For the Men and Big Boys*

**MEN'S RAND**

& KEY CLUB

**30% off**

**BOYS' 3½x6  
ROYAL CADET**

**\$7.00**

*For the Children*

**POLL PARROT & SCAMPEROO**

**30% OFF**

NO EXCHANGES - NO REFUNDS - ALL SALES FINAL

Open

10 to 9 P.M.

Saturday

10 to 6 P.M.

**Jules Shoes**

**WESTGATE SHOPPING CENTER**

Use Your  
Convenient



SALE

SALE

SALE

SALE

SALE

SALE



L-I-G-H-T-W-E-I-G-H-T

**WHEELCHAIRS**  
by Everest & JenningsONLY 26  
POUNDS!Albany Surgical Co.  
HE 4-5716**JAMES W. BARTLEY  
and SONS**Plumbing, heating & electric  
water pump sales & service  
Clarksville PO 8-2230**Top Soil at its Finest!**Rich, specially prepared,  
sandy loam or sandy clay  
loam. J. W. MICHAELS CO.,  
INC., LANDSCAPE CON-  
TRACTORS. HE 9-3823.**von Bank's  
TV SERVICE  
HE 4-5887**

Quality-Responsibility-Honesty.

**NATIONAL SAVINGS BANK  
ANNOUNCES NEW HIGHER DIVIDEND****4 1/2%  
A YEAR\*****PAID FROM DAY OF DEPOSIT ON ALL  
SAVINGS ACCOUNTS AND NEW DEPOSITS**\* Compounded quarterly for the quarter beginning July 1, 1966, anticipated,  
provided present satisfactory earnings continue.Money deposited on or before July 13 will earn this new higher dividend  
from July 1.**NATIONAL SAVINGS BANK**

DOWNTOWN, CORNER OF STATE &amp; PEARL: OPEN 9 AM-3 PM MONDAY-FRIDAY, THURSDAY TILL 8 PM

UPTOWN, WESTGATE SHOPPING CENTER: OPEN 10 AM-4 PM MON.-THURS., 10 AM-8 PM FRI., 10 AM-3 PM SAT.

MEMBER FEDERAL DEPOSIT INSURANCE CORP. ALBANY, NEW YORK FREE PARKING AT PARK &amp; SHOP LOTS

MAIL THIS COUPON TO  
EITHER NSB OFFICE:Send money order or check.  
If you send cash use Regis-  
tered Mail.**NATIONAL SAVINGS BANK**

I enclose \$\_\_\_\_\_. Please open a Savings Account as indicated below.

☐ Individual Account☐ Joint Account with \_\_\_\_\_☐ Trust Account for \_\_\_\_\_

NAME \_\_\_\_\_

ADDRESS \_\_\_\_\_

CITY \_\_\_\_\_

STATE \_\_\_\_\_

ZIP CODE \_\_\_\_\_



## BRAKING TIPS

While you probably consider yourself a good driver, nevertheless poor braking habits may be causing you to waste money on gas, tires and brake replacements—perhaps even risking your life!

According to safety engineers in the brake lining division of Johns-Manville, more than 60% of all fatal accidents on the road are caused by excessive speeds and faulty brakes. Actually, from a safety standpoint, your brakes constitute the most important part of your car.

The big automotive news for 1966 is the disc brake—long used on racing cars and jet aircraft, and now available on many new model cars. Automotive engineers report that disc brakes develop less fade at high speeds and provide steady braking power.

But no matter what model car you own, these tips from Johns-Manville may help you put the skids to some common driving problems:

1. Give your brakes a break. The harder you use them, the quicker you'll wear out the linings. Try to ease up to stops you know you must make.

2. Don't ride the brakes. Quick, short applications and relief, are most effective to prevent heat build-up in the drums and to maintain the friction you need for smoothest stops.

3. Watch for symptoms of "sick" brakes: too much pedal movement toward the floor, grabbing too abruptly, noisiness, dragging, and brakes pulling car to one side.

4. If fluid has to be added more often than every 1,000 miles, have the entire system checked for leaks.

5. Listen for trouble evidenced by typical noises when stopping. Such as a hollow groan meaning worn or loose parts, or a shrill screech meaning the lining is worn down to the rivets and they are scraping the brake

drum.

6. In case of brake failure, first apply the parking brake. Many people forget it's there. Put car into low and pump the pedal to build up pressure in the system. If your brakes fail to operate properly because they're wet, you should either stop and wait for them to dry or drive for a few minutes with one foot on the accelerator and the other on the brake pedal.

By heeding these six safe, economical tips, you should be able to give yourself the "brake" you need.

# MADE-TO-MEASURE DRAPERIES!



GET WHAT YOU WANT  
ANY LENGTH  
ANY WIDTH

Fabric and Labor  
Included!

Choose from our huge  
selection of newest  
fabrics and colors

Antique Satins  
Fiberglas, Boucles,  
Prints, Fortrels, Sheers,  
Linens and other favorites


LINED OR UNLINED

All draperies are made to  
our rigid custom standards  
... double side and bot-  
tom hems, triple-tacked  
pleats, weighted corners  
and permanent buckram.  
Finished draperies will  
be delivered to you dec-  
orator folded.

Stuyvesant Plaza  
Open Every Night  
'til 9 P. M.  
Sat. 'til 6 P.M.

**Marcel's**  
FABRICS

Tel. 489-4795



Affluent Names in  
MENSWEAR...

*Countess Mara*  
Neckwear

*Bronzini*  
Neckwear

*Alan Paine*  
Sweaters

*Daks*

*Burberry*  
Rainwear

*Baker Clothes*

*Stulmaker's*  
8 James Street  
Just off Store  
Open Thursday to 9  
Member Park'n-Shop

*Announcing Our New*

**4<sup>1</sup>/<sub>2</sub>%**

**per year  
DIVIDEND**

(Anticipated for Quarter July 1, 1966 based on continued favorable earnings.)

**DIVIDENDS  
COMPOUNDED  
4 TIMES PER YEAR**

We Invite Corporate and Trust Accounts

**VOORHEESVILLE**  
*Savings and Loan*  
*Association*

Voorheesville, N. Y. Tel. ROCKWELL 5-2772

## An All-Time Favorite Thirst Quencher



TALL REFRESHING GLASSES OF ICED TEA just seem to go along with summer socials, especially the informal kind . . . with just a few friends. Iced tea can come alive with true lemon flavor when Twist imitation lemonade mix with sugar is added to it—bright, tart, and just sweet enough to quench stubborn thirst.

If you are one of the many calorie counters, there's a pre-sweetened sugar free mix that will give the same lemony goodness without the added calories.

Add a sprig or two of mint and your Lemon Tea will delight your family as well as your friends.

### LEMON TEA

Ice cubes  
4-3/4 cups strong tea

1 envelope sugar-sweetened  
imitation lemonade mix\*

\*Or 1 envelope pre-sweetened sugar free imitation lemonade mix. Fill 5 iced tea glasses with ice cubes. Pour in tea. Then stir about 1-1/2 tablespoons sugar-sweetened lemonade mix (or about 1/2 teaspoon sugar free mix) into each glass until dissolved. Makes 5 servings.

## TRAVEL ON ANY OF THE FOLLOWING NATIONWIDE TRIPS!

July 18-23—New England Tour .....	85.00
July 24-28—St. Anne's Feast Day—St. Anne De Beupre. Trans., Hotel and Shrines (St. Anne's, St. Joseph's, Cape de Made- leine .....	65.95
July 25 thru 30 — Virginia Beach Hotel, transportation .....	\$93.50
Aug. 14-Sept. 4th—Yellowstone National Park and Grand Canyon .....	397.95
Aug. 22-26—Penn Dutch Tour .....	82.45

For Reservations  
CALL

**377-3392**

**NATIONWIDE TOURS INC.**  
**SCHENECTADY TRANSPORTATION CORP.**  
1344 Albany St., Sch'dy, N.Y.

HE 9-4949

SPOTLIGHT CLASSIFIEDS

HE 9-4949

**CLASSIFIED AD POLICY**  
Classified Ads in the Spotlight must be paid for when the ad is submitted. We must enforce this policy strictly. Our rates are too small to permit invoicing and bookkeeping on these accounts. Please do not ask us to make any exception to this rule.

Your copy and remittance must reach us on Friday before 4:30 P.M. in order to appear in the following Thursday issue.

#### CLASSIFIED ADVERTISING RATES

10¢ per word for each insertion; \$1 minimum.

CALL HE 9-4949

Write, or stop in at our convenient office:  
154 Delaware Avenue

#### ALTERATIONS & SEWING

**ALTERATIONS** and sewing. M. Buess. HE 9-1270. tf

**ALTERATIONS** and sewing. Kirk Hauser. HE 8-0014. tf

**ALTERATIONS**, dressmaking. Diane. HE 9-5740. 5t714

**ALTERATIONS** and Sewing. Call Irene, 386 Kenwood, Delmar. HE 9-9257. 5t714

#### APPLIANCE SERVICE

**RAE:** small appliances repaired. Free pick-up and delivery. RO 7-3821. tf

#### BLACKTOP

**LUIZZI BROS.**, Blacktop Paving: Parking lots, driveways, garage floors, sidewalks. Free estimates. 482-3484. tf

**CAPITAL PAVING SERVICE** — Blacktop, landscaping — topsoil. Free estimates, all work guaranteed. 434-4920. tf

#### BUILDING & CONTRACTING

**HOMES**, garages, remodeling, additions, "easy terms," Hogan Construction Co. IV 2-4693. tf

We are known . . .  
By our good  
Listings

# ROBERTS

489-3211

**ALTERATIONS**, repairs, complete bath and kitchen installed. Call 895-2277, the Loh Co., General Contractors, where craftsmanship is appreciated, never publicized. 4t714

#### CARPENTRY

**REMODELING** — All types of carpenter work. H. A. Ertel, HE 9-1048, Ed Hehre, HE 9-1198. tf

**ADDITIONS**, remodeling, roofing, stairs, general repairs. Arthur Molle. HE 8-7165. tf

#### CAR WASHING

**2-25¢** coin operated stalls; 1-51 automatic stall attended. Bethlehem Auto Laundry. Route 9W, Bethlehem Center. 4t728

#### CLEANING SERVICE

**LOCHMOOR** Window Cleaning Co. Resident and office maintenance, complete. IV 9-0121 or 489-2474. tf

**HOUSE CLEANING**, window washing, floor maintenance, also any other cleaning you need. Old Holland Cleaning Service, Inc. RO 7-2739. tf

#### DOLL REPAIRING

**DOLLS** repaired, restrung, costuming. Reina Deitz. HE 6-1690. tf

#### DRIVER TRAINING

#### Albany Driving Academy

67A Edgewood Ave., Albany

Beginners - Intermediates

Brush-Up

**CARS AVAILABLE FOR ROAD TESTS**

Standard & Automatic

Call HO 2-1309

#### FURNITURE REFINISHING

**FURNITURE** repairing, refinishing, re-upholstering. French. HE 4-0633. tf

#### FUNERAL DIRECTORS

**M. W. TEBBUTT'S SONS**  
Albany Delmar

420 Kenwood Ave.  
HE 9-2212

Serving All Faiths  
For Over 100 Years

#### INSURANCE

**LIFE INSURANCE** — Health insurance, general insurance. Phone Bob Roth. 439-2360. 6t728

#### JEWELRY

**EXPERT WATCH AND JEWELRY** repairs. Diamond setting, engraving wedding and engagement rings, reasonable. Your trusted jeweler, D. LeWanda, Delaware Plaza Shopping Center. HE 9-9665.

#### LANDSCAPING

**TOP SOIL**, landscaping, lawn maintenance, tree cutting. Hummel. 439-6115, Slingerlands. 5t728

#### LAWN MOWERS

**LAWN MOWERS** — SALES AND SERVICE. Hilchie's Hardware, Delaware Avenue, Delmar. HE 9-9944. tf

**SHARPENED**, repaired. Jacobsen Sales and Service. Rotors, Reels, Riders. Time payment plan available. M. Gudiz, 138 Elm Avenue, Delmar. HE 9-2025. tf

#### LIQUORS & WINES

**SLINGERLANDS PACKAGE STORE**. Complete line. Deliveries. Discount on case lots. Party consultants. Open 10 A. M. to 10 P. M. Phone HE 9-4581. tf

**O'ROURKE'S** Liquor Store, Corner Elm Avenue & Jericho Road, Selkirk. tf

#### MASON WORK

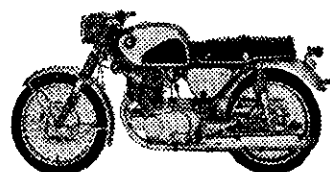
**EXPERIENCED**, all types masonry, new or repairs. Guidara. HE 9-1763 evenings. tf

**MASONRY**, carpentry, roofing, taping. Reasonable rates. Call HE 9-6339, 477-4315. 4t728

#### MIMEOGRAPHING SERVICE

**REASONABLE RATES** — Mimeographing - stencils cut - address-

#### FOR THE GRADUATE



**HONDA**  
50<sub>cc</sub> to 450<sub>cc</sub>  
\$249 UP

LARGEST DISPLAY IN THE TRI-CITIES — PARTS—SERVICE—ACCESSORIES

Open Daily 9 to 8:30 'HONDA CITY' Sat. 9 to 4:30

**JAF MOTORS Inc.** 1371 Broadway Schdy EX 3-2621

This Coupon Ad Is Worth \$69.95 Toward the Purchase of a

## MAR-LINER SWIMMING POOL

AMERICA'S FINEST PRE-ENGINEERED VINYL LINER POOL

Bring It In — Or Mail to Paddock Pool Mart, P.O. Box 5101, Albany, N. Y.

NAME .....

ADDRESS .....

CITY .....

PHONE .....



Have You Seen The New  
**PADDOCK POOL MART**

Upstate New York's only complete pool store and display.

Built by Paddock, the largest and most respected pool builder in the East.

## Paddock Pool Builders

118 Railroad Ave. Extension (West of Fuller Rd.) Albany  
Just Off Thruway Exit 24 & Northway

Phone Collect **459-3121**

Pool Mart Hours: Sun. 1-6, Sat. 9-8, Tues. - Fri. 11-8

ing - mailing, Delmar, N.Y. 439-3383. tf

## MOVERS

**D. L. MOVERS.** Local and long distance moving. Reasonable rates. No job too small or too large. Dick Leonardo. HE 9-5210. tf

**HOUSEHOLD MOVING,** low rates, new equipment, experienced personnel, free maid service. Local moving. 465-1200. tf

## ORIENTAL RUGS

**NEW AND USED,** in all sizes and colors at reasonable prices. Washing and repairing by native expert. Pickup and delivery. Free estimates. Rod Kermani. Stop 3, Albany-Schenectady Road. EX 3-6884 or IV 2-0457. tf

## PAINTING & PAPERHANGING

**INTERIOR,** exterior painting. Free estimates. Guaranteed. Insured. Jim Vogel. HE 9-9718. tf

**INTERIOR** painting, work guaranteed, reasonable prices. William Brower 3rd. HE 9-9143. 4t721

**INTERIOR** and exterior painting. Also carpentry work. Frank Salisbury. Days: HE 9-5527; nights: HE 9-1355. tf

**DON VOGEL,** exterior - interior painting, paperhanging, fully insured. HE 4-2853, HE 4-8370. tf

## PERMANENT WAVING

**SPECIALIZING** in Breck, Realistic, Rayette and Caryl Richards permanents; hair tinting and bleaching. MELE'S BEAUTY SALON, Plaza Shopping Center. HE 9-4411. tf

## PIANOS

**PIANOS** - organs. Area's largest selection. BROWN'S PIANO - ORGAN MART. 459-5230. tf

## TOY DEMONSTRATORS

**\$4.00 per hour  
Guaranteed**

The Original Discount Party Plan  
No Investment, Commissions, to 25%

## American Home Toy Parties, Inc.

Mrs. Helen Mintline, Dist. Mgr.  
PO Box 353, Latham, N.Y. 12110  
Telephone 785-5343.

## HAGIES HONDA

**Super Summer  
SALE**

Save \$25 on a new S-90  
Comparable savings on other  
models ACT FAST . . .  
limited quantity

## HAGIES SALES

336 First St., So. Troy

## PIANO TUNING

**PIANO** tuning and repairing. Emile Catricola. AR 3-7844.

## PRINTING

**PHOTO-OFFSET - GENERAL** PRINTING, addressing, mailing, prompt service, low price. Free pickup - delivery. Tri-City Area. 283-1262. tf

## SCISSORS SHARPENED

**SCISSORS SHARPENED,** 6 pairs med. size, \$2.00 also pink shears, saws, hair clippers, lawnmowers, knives. Called for and delivered HE 9-3893. tf

## SEPTIC TANK SERVICE

**NORMANSKILL** Septic Tank Cleaners. We install dry wells, septic tanks, drain fields. 767-9287. tf

**DELMAR SANITARY CLEANERS** Serving Tri-Village area over 20 years. HE 9-1412. tf

## TREE SERVICE

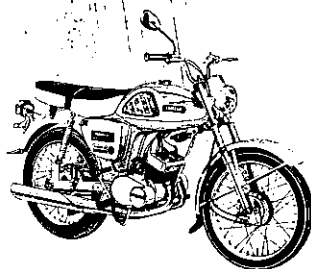
**HERM'S TREE SERVICE:** trimming and removal (insured). Call Albany, IV 2-5231. tf

## MERCHANDISE FOR SALE

**ALUMINUM** combination windows, doors, siding, etc. Finest quality at lowest prices. Taylor Aluminum Products. RO 5-2856. tf

**ANTIQUES** bought and sold at the sign of the Coffee Mill. 67 Adams Pl., Delmar. HE 9-1021. tf

## Discover the SWINGING WORLD of Yamaha



## TWIN JET 100

Prices Starting at  
**\$249.00**

Yamaha Sportcycles  
Used Corvettes  
Our Specialty

## JARRETT AUTO SALES INC.

1012 Central Ave., Albany  
PHONE 489-1666  
Ken Jarrett, Jr., Pres.

**FUEL OIL:** 2¢ per gal. cash discount. Academy Oil Service, Glenmont. 24-hour service. HO 2-1309, 465-5336. tf

**PIANOS** - MASON & HAMLIN, Knabe, Fischer, Weber and Stark, also fine selections of slightly used pianos. Call A. Andrew Gigliotti. HO 3-5223. tf

**FURNITURE:** our low cost operating policy enables us to bring you BIG SAVINGS on NEW furniture, rugs, bedding, drapes. BURRICK FURNITURE, 560 Delaware Ave., Albany. Just across the Thruway Bridge in Albany. tf

**AMPHITHEATRE-STEREO,** FM-AM radio, 23" TV, Fruitwood cabinet, perfect condition, 55 1/2" long, \$250. WHF optional. RO 5-2086. 4t714

**KNAPP** shoes for extra foot comfort. Walt Penny. HE 9-1221, HE 4-7051. 3t714

**AIR** conditioner, like new, 6000 B.T.U., thermostal control, \$95. 765-4120.

**GUITAR AMP** with tremolo, 2 inputs, almost new, \$38. HE 9-2333.

**LOST** bright carpet colors . . . restore them with Blue Lustre. Rent shampooer \$1. Adams Hardware, 380 Delaware Ave., Delmar.

**JACOBSON** lawnmower, reconditioned, \$26; boy's bicycle, Schwinn 28", practically new, used twice, \$30. HE 9-1993 after 4.

**DOT'S** - Summer hours starting July 1st: Friday and Saturday 10 A. M. to 5:30 P. M., evenings by appointment. Regular hours resume August 17th. HE 9-9086.

**FLORAL** drapes, 72"; cornice 94" same material - see - make offer. Golf cart English make, light weight, like new, asking \$18. 439-1347.

**MUST SELL:** electric range; gas dryer; antique table; mirrors; HO train table, plus extras; sleds; bureau; fire wood. HE 9-1067.

**LAWSON** sofa, toast, turquoise, chair set, \$50. HE 9-1370.

**DOUBLE** sink on 6 ft. formica counter with I.X.L. drawer unit and door front. Reasonable. HE 9-4758.

**SIX** men's matched irons, \$20; three matched woods \$15. HE 9-5314.

**GARAGE SALE** - Hand tools, saws, planes, drills, chisels, wrenches, shovels, odd paints, brushes, saw buck, etc., tinware for decorating, wooden trays, skill-ets, pressure cooker, kerosene heater, storage cabinets, floor mats, misc. All day Saturday, July 9. 10 Fernbank, Delmar. 439-1055.

**ROUND** walnut coffee table, 40", marble top. 439-9529.

**NEW** portable sewing machine, \$75. 439-5545.

**SUBSCRIBE TO**  
**THE SPOTLIGHT**

## SCHWINN • RALEIGH BICYCLES



Parts and  
Accessories  
for

All American and English Bikes  
We repair all makes  
TRADE-INS

**Bennett's**  
SPORTING GOODS  
561 Delaware Ave., Delmar, N.Y.

## AUTOMOTIVE FOR SALE

**1951** MGTD Roadster, completely restored. Box K. Spotlight, Delmar. tf

**1963** Triumph "Spitfire," all extras, excellent, \$950. HE 9-4949. tf

**1965** Oldsmobile 442 Cutlass convertible, 3-speed hydromatic transmission, 345 HP, power steering, 1400 miles. 439-9115.

**1960** Falcon station wagon, standard transmission, one owner, good condition. HE 9-1067.

**1965** Volkswagen Variants S, 1500 miles, snow tires, excellent, \$1750. 439-5008.



Saab Authorized Dealer

## NEW SALEM GARAGE

New Salem Route 85  
DeWitt and Fred Carl  
- NEW AND USED CARS -  
Telephone RO 5-2702

## PETS

**DOG GROOMING,** professional. Pickup, delivery. Poodles a specialty. Donna. HO 5-3601. 10t714

**FOR** expert dog grooming, call Judy. HE 6-1445. tf

**KITTEN,** gray and white female, long haired, free. 439-9648.

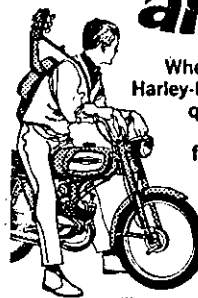
## WANTED TO BUY

**WANTED** to Buy: old clocks and watches. Call Brooks. 438-0296.

## REAL ESTATE FOR SALE

**INCOME** Country property, 6 miles from GE plant, Feura Bush, 3 apartments, 125 acres, 3,500 frontage, brick, slate roof, ample water. 439-4098. tf

## RALLY ROUND THE FUN WITH YOUNG AMERICA



Where else can you get  
Harley-Davidson sportcycle  
quality at this price?  
300 miles between  
fills! Pennies a week.  
Insurance and  
low-cost financing  
available.

**TWO MODELS**  
starting at about

**HARLEY-DAVIDSON** \$225

## SPITZIE'S SALES

Stop 9, Albany-Schenectady Rd.  
(Route 5) Tel. EX 3-2127



**REAL ESTATE FOR RENT**

**CAPE COD**, Bass River, The Blue Lodge, 2-3 bedroom, spacious, heated, housekeeping cottages. South Shore. HE 9-3213. tf

**OFFICE SPACE** in Colonial House Professional Building, 230 Delaware Avenue, Elsmere. HE 9-5173. HE 9-2957. 4t728

**APARTMENT**, Albany, 3 rooms, bath, furnished, \$45. You furnish your own gas, electric. RO 7-3429.

**BUILDING**, concrete floor, 40' x 60', for storage, Slingerlands area. PO 8-2138.

**PETS****SIAMESE KITTENS**

Blue Point, Champion  
Sired, Pedigreed, Shots  
\$50



Harbinger  
439-2915

**HELP WANTED**

**HIGH school boy** part time, driver's license. Kiddie World, 55 Delaware Avenue, Elsmere.

**HOUSEKEEPER** needed, permanent, 8 A. M. to 5 P. M., own transportation. HE 9-5847 after 6.

**OLDER teenage girl**, Voorheesville area, needed for 2 children. HE 9-5847 after 6.

**HOUSEKEEPER**, full or part time, New Salem. IV 9-4764 days, IV 9-0801 evenings.

**SALES LADIES**, full and part time, excellent salary. Apply Little Folks Shop, Delaware Plaza.

**CLEANING woman**, one day every other week. Call HE 9-3521.

Spotlight Phone HE 9-4949

**SITUATIONS WANTED**

**SENIOR** high boy will do odd jobs and yard work. Phone HE 9-4303 after 5 P. M.

**BABYSITTING** jobs, wanted, day and evening. HE 9-4623.

**NEAT woman** wants day cleaning, seven hours. Call 463-2015.

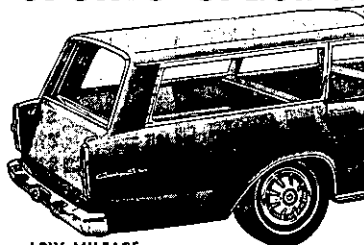
**Colonial Acres**



RT. 32, GLENMONT

**GOLF COURSE**

Limited Private  
Membership  
Now Available  
For further information  
Call  
Glenmont Development  
Corp. HE 9-9231

**SPORTS SPECIAL**

LOW MILEAGE

**'66 FORD WAGON**

WITH MAGIC TAILGATE

WE NEED YOUR USED CAR **\$2413** TOP ALLOWANCES TRADE

BUY LOW AT

**CRAILO**



EAST GREENBUSH

GR 7-9302

**HANDWRITING** Expert - wishes to contact anyone in school groups, bridge parties, teachers, police department, for instruction on handwriting. C. P. O'Clair, Kissel Lot 4D, 1990 N. Scotland Rd., New Scotland.

**RIDE WANTED**

TO Albany Medical from Colonial Acres, Glenmont, leave 11:30 A. M., return 8:30 P. M. 439-5663.  
**WALDENMAIER** Road, Feura Bush, to Washington and Lark, starting July 18. 439-6427.

Subscribe to The Spotlight

**Colonial Acres**



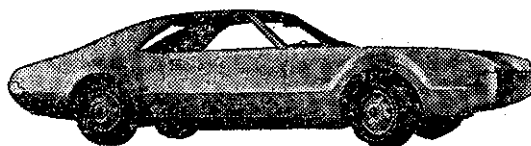
RT. 32, GLENMONT, N.Y.

A planned community of early American homes.

PHONE HE 9-9231

SUBSCRIBE TO

THE SPOTLIGHT

**Lease 1966 Toronado**

FOR AS LOW AS **\$129.00** PER MONTH

526  
CENTRAL AVE.,  
ALBANY  
482-4491

**Bodnar Oldsmobile**

All Roads Lead To Hallmans'!

**WE'LL REACH FOR ANY DEAL!!**



**MARSH HALLMAN HAS THE LARGEST SELECTION**

of NEW

**1966 CHEVROLETS**

IN THE ENTIRE CAPITAL DISTRICT

\* **WE'LL MAKE THAT IMPOSSIBLE DEAL!**

\* All Ready for Immediate Delivery

\* No Payments Till Late Spring

**MARSH HALLMAN CHEVROLET, Inc.**

**781 CENTRAL IV 9-5551**

Open Daily Til 9 P. M. Friday Saturday Til 6 P. M.

**Where More People Buy For Less!**

CALL . . .  
**438-8461**

A CALL WILL SHOW YOU  
WHY IT PAYS TO  
LEASE FROM . . .

**ALBANY DODGE**

LEASING CORP.

949 CENTRAL AVE.  
ALBANY, N.Y.



Downtown: Mon. thru Fri. 10 to 5:30, Thurs. 'til 9  
Closed Saturdays During July and August

Delaware Plaza: Mon. thru Fri. 'til 9, Sat. 10 to 5:30



# ANNUAL JULY SALE

outstanding values . . . prime selections  
(Both Stores)

## MEN'S DEPT.

entire stock

### TROPICAL SUMMER SUITS

reg. 55 & 59.95 **43<sup>99</sup>** reg. 69.95 **53<sup>99</sup>**  
reg. 74.95 **58<sup>99</sup>**

two and three-button models - our famous maker's & nat'l adv. brands  
newest patterns and colors - sizes in regulars, shorts, longs, x-shorts,  
x-longs, portlys

## MEN'S DEPT.

entire stock

### TROPICAL SUMMER SPORT COATS

reg. 29.95 **24<sup>99</sup>** reg. 32.95 **26<sup>99</sup>**  
reg. 35 & 37.95 **28<sup>99</sup>**

famous nat'l. adv. brands - all new patterns and fabrics  
sizes in regulars, shorts, longs

Cuffs Free . . . Slight Charge for Other Alterations

## MEN'S DEPT.

entire stock

### TROPICAL SUMMER SLACKS

reg. 10.95 **8<sup>99</sup>** reg. 12.95 **9<sup>99</sup>**  
reg. 14.95 **11<sup>99</sup>** reg. 15.95 **12<sup>49</sup>**

all nat'l. adv. brands - sizes in regulars, shorts, longs

NO LAYAWAYS - CHARGE IT!

## MEN'S FURNISHINGS

	reg.		reg.
short sleeve	4.00	<b>Sport Shirts</b>	<b>1<sup>99</sup></b>
	1.50	<b>Ties</b>	<b>89<sup>c</sup></b> 3.50 <b>2<sup>19</sup></b>
	2.50		or <b>3<sup>500</sup></b>
nat'l branded	1.00 ea.	<b>Stretch Sox</b>	or <b>3<sup>200</sup></b>
full length & knee length	4.25	<b>Pajamas</b>	<b>2<sup>99</sup></b>
orlon & banlon	7.95	<b>Polo Shirts</b>	<b>3<sup>96</sup></b>
selected group	8.95	<b>Summer Robes</b>	<b>4<sup>99</sup></b> 10.95 <b>6<sup>49</sup></b>
white short sleeve	4.25 ea.	<b>Dress Shirts</b>	<b>4<sup>1200</sup></b>

## 'MR. YOUNG SHOP' & BOYS' DEPT.

	reg.		reg.
entire stock		<b>Sport Shirts</b>	
famous brand	2.98	<b>3<sup>99</sup></b>	3.98 <b>2<sup>99</sup></b>
	4.98		
entire stock		<b>Polo Shirts</b>	
famous brand	2.98	<b>1<sup>99</sup></b>	3.98 <b>2<sup>99</sup></b>
	4.98	<b>3<sup>99</sup></b>	
young men's		<b>Chinos</b>	
famous brand	5.95	<b>2<sup>99</sup></b>	
young men's		<b>Denims</b>	
scrubbed	5.95	<b>3<sup>99</sup></b>	
young men's		<b>Sport Coats</b>	
imported madras	22.95	<b>17<sup>99</sup></b>	29.95 <b>24<sup>99</sup></b>

Permit No. 10  
**PAID**  
U. S. POSTAGE  
Bulk Rate

