

# The Spotlight

VOL. XI, NO. 35

SEPTEMBER 1, 1966

\$1.00 PER YEAR

10¢ A COPY

## Bizarre Bazaar

Hurry all you artists in the Bethlehem School District. Get out your brushes, oils, water colors, pastels or whatever medium you prefer. It is time to get ready for the annual outdoor Bizarre Bazaar at the Delmar Public Library. The dates: October 14, 15 and 16.

Few of us can whip up a little something over night so you are being given plenty of advance notice. Of course, if you have already done your painting, sculpting, wood carving or what your talent demands, all you have to do is keep track of the dates.

The classes for exhibitors are: Junior includes ages 10-14; Senior, ages 15-18; and from 18 on the group is divided into those with either an amateur or professional standing.

This art show is one of the outstanding events held at the Library. It draws an increasingly large number of spectators and exhibitors each year. So far, the weatherman has been most cooperative but no matter what he has in store the show goes on.

## Meeting

There will be a meeting of the Ladies' Auxiliary of the Delmar Fire Department on Thursday, September 8, at 8 p.m. at the Fire Hall.

## On Dean's List

Richard E. Flanigan, son of Mrs. John H. Flanigan, Sr., of 1465 New Scotland Road, Slingerlands, is again on the Dean's List at Parsons College, Fairfield, Iowa. He has been on the Dean's List since returning to College in September, 1964. He is also a member of the Green Key Honor Society.

## Tournament

A tennis tournament for men and women, sponsored by the Bethlehem Tennis Association, will be held on September 17-18 and September 24-25 at the Junior and Senior High School courts in Delmar.

The events scheduled are men's singles and doubles, women's singles and doubles, mixed doubles, and senior men's (age 45 and over) doubles.

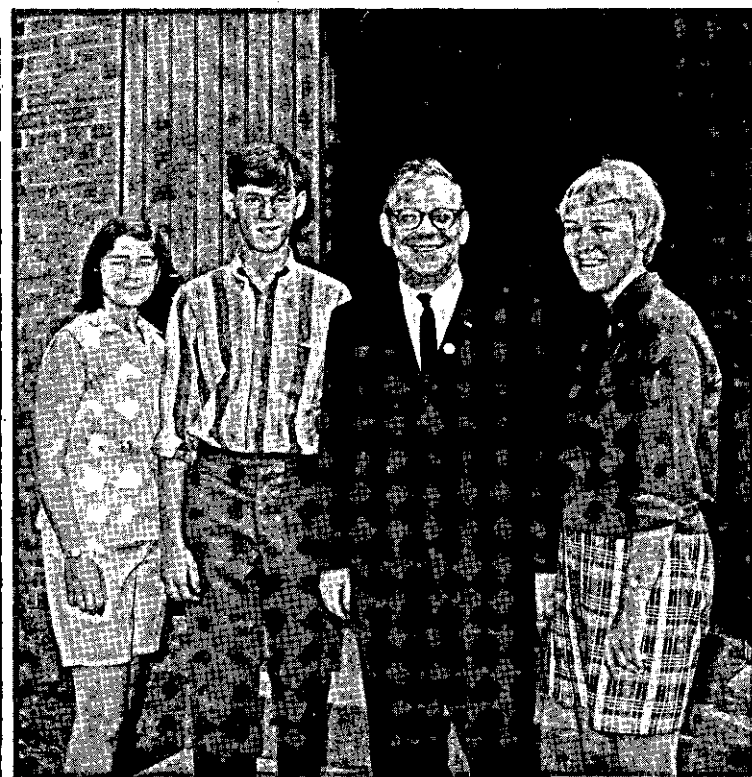
The tourney is limited to players 18 years of age and over who reside in the Town of Bethlehem or the Bethlehem School District, and to others who are members of the Tennis Association as of September 13.

Trophies will be awarded to the winners and runners-up of each event.

Entry forms may be obtained from Wm. L. Fuller, Main Office, Junior High School or from tournament committee members, T. S. Stevenson, Mrs. John A. Balint, Mrs. Robert Korngold, Dr. Harold E. Marden, Jr., and Ronald Tweedie. September 13 is the deadline date for entry filing.

A "dutch-treat" picnic, to which all are invited, will be held on the afternoon of September 25 at the Junior High School courts following completion of the final championship match.

Richard is a graduate of Bethlehem Central High School and attended the Citadel in Charleston, So. Carolina. He is married to the former Jeanne Linnan of Delmar and they reside in Fairfield, Iowa where Mrs. Flanigan is a Home Economics Teacher in the Fairfield School System. Mr. Flanigan will graduate in February of 1967, and plans to attend the Wharton School of Finance.



Candidate Dan Button, second from right, certainly looks pleased with the entire world as he poses with, left to right, Marie Van Cott, 70 Darroch Road, Delmar; unidentified TAR from Troy; and Carla Pelton, 11 Alden Court, Delmar, president of the Bethlehem Teen Age Republicans. Event was a meeting of TARs at Saratoga recently.

## First Service

The Bethlehem Community Church will hold its first Sunday morning worship service on September 4, at 11:00 a.m. Services



Rev. Arthur Gay

will be held temporarily in the Community Room of the Delmar Library. The Reverend Arthur Gay will preach his first sermon as the Minister of the church. The morning message will be "The Lost Century" and the evening message "Called; Changed, but Unused."

## Horse Show

The Bethlehem Volunteer Ambulance Service, Inc., will receive the proceeds from an All-Performance Open Horse Show to be held on Sunday, October 2, beginning at 9:30 a.m.

The show will be held at Jericho Valley Ranch on Long Lane two miles south of Feura Bush.

Twenty-two events are scheduled. A tack shop will be open; there will be a "white elephant" booth; refreshments will be available.

Sunday School will commence on September 11, at 9:45 a.m. Classes will be held for both children and adults. The basis of the curriculum is the Word of God as presented in the Holy Bible.

The Bethlehem Community Church schedule is as follows: Sunday: 9:45-Sunday School (starting September 11); 11:00 Morning Worship (Delmar Library); 7:30-Evening Worship. Wednesday: 7:30-Mid-Week Service.

### SPECIAL MACHINERY BUILT TO YOUR DESIGN

Replacement parts made or  
repaired - experimental work  
Prompt Service - Reasonable Prices  
Farm Machinery Welded & Repaired

**Michael Steel Fabricators  
and Welding Company**

Beacon Rd. off 9W, Glenmont, N.Y.  
HO 3-2775

### TOY DEMONSTRATORS

**\$4.00 per hour  
Guaranteed**

The Original Discount Party Plan  
No Investment, Commissions to 25%

**American Home  
Toy Parties, Inc.**

Mrs. Helen Mintline, Dist. Mgr.  
PO Box 353, Latham, N.Y. 12110  
Telephone 785-5343

RCA Whirlpool - Magic Chef  
Admiral & Hotpoint Appliances  
MOTOROLA TV

### DELMAR APPLIANCES

239 Delaware Avenue, Elsmere  
Telephone 439-4558

### JAMES W. BARTLEY and SONS

Plumbing, heating & electric  
water pump sales & service  
Clarksville PO 8-2230

## New Scotland: Valuations Rise

Two country clubs, the American Telephone and Telegraph Co., the Bethlehem Water System, and new homes are cited as major factors in New Scotland's \$439,536 increase in assessments in 1966.

Supervisor Willis B. McIntosh Jr., names these causes of an increase which he called "a little above average and a lot better than last year." The 1965 valuation of \$6,178,936 was only about \$248,000 over that of 1964 he said.

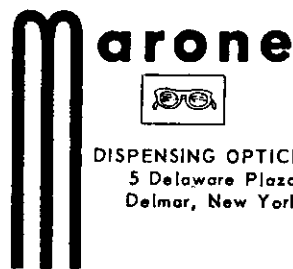
The 1966 assessment totals \$6,618,472.

The country clubs contributing to the increase are the Colonie and Tall Timbers clubs, both on Route 85A.

The telephone company's contribution covered underground lines running to a center the firm is building in Coeymans.

Bethlehem's Water District No. 1 was given a "final assessment" on a dam and pipelines it has installed within New Scotland's boundaries.

The assessment of the Village of Voorheesville for town tax purposes is \$1,218,537 an increase from the \$1,156,010 assessed last year.



DISPENSING OPTICIAN  
5 Delaware Plaza  
Delmar, New York



*You DO BELIEVE  
that your Children's EYES ARE  
PRECIOUS!*

Therefore — send them back to school  
with *Perfect Vision!*



Make an appointment today with your ophthalmologist (eye physician) and if glasses are necessary, have the prescription filled at DOUGLAS G. MARONE, the Tri-Village area's only dispensing optician.

The finest ophthalmic materials used in compounding the prescription plus the latest in eyewear styling for the Small Fry (new Tortoise Shell colors in the styles like Mom and Dad wear) together with over 35 years experience assures you of complete satisfaction.

Daily 10:00-5:30  
Sat. 10:00-3:00 (Beginning September 10)  
Evenings by Appointment

Tel. HE 9-9191



## OPENING NIGHT CLUB TUESDAYS

- DINNER AT JAMAICA INN
- RESERVED SEATS AT COLONIE SUMMER THEATRE
- MEET-THE-CAST PARTY AFTER. ALL FOR \$6.50.

TO RESERVE CALL  
785-8559 785-5888

*Jamaica Inn*

Troy-Schenectady Rd. Latham

# Natural Wood

## beauty preserver

### touraine Heritage CLEAR GLOSS VARNISH



- Beautifully clear, durable high gloss for all interior surfaces, including floors.

For that rich, smooth, hand-rubbed look of heirloom furniture and woodwork, use Heritage Semi-Gloss or Satin Finishes.

## touraine

**We will  
NOT  
be open  
for business  
on Saturday,  
September 3**

**PRO** *Delmar*  
**LUMBER &  
BUILDERS' SUPPLY, INC.**  
**HE.9-9968** WE DELIVER  
340 DELAWARE AVE. DELMAR, N.Y.

The town's four fire districts showed increases in valuations. The Slingerlands Fire District assessments rose from \$352,900 to \$376,900. Valuations in the Onesquethaw Fire Protection District were set at \$2,229,850, a rise from \$2,067,650. The New Salem District's total is up from \$2,471,900 to \$2,680,300 and the Krumkill District's has increased to \$62,300 from a \$54,600 total last year.

The assessment on the town's one water district, the Helder-vale system rose from \$123,000 to \$142,700.

The Clarksville Lighting District showed a rise from \$260,700 to \$261,600. The Feura Bush District's first year in existence showed a value of \$133,900.



Mr. and Mrs. Olin Becker of Albany recently celebrated their 50th Wedding Anniversary at the home of their son and daughter-in-law, Mr. and Mrs. Ralph Becker of Clarksville.

## Horse Show

The New York State Quarter Horse Association's Annual Horse Show will be held this year on September 10 at the Washington County Fairgrounds, Greenwich, New York. Dr. Philip Brown of Cambridge, general Chairman of the Show, is being

## HELP WANTED

**SECRETARIES  
TWO — EXPERIENCED**  
Office located in center of  
Tri-Village Area.  
Write qualifications to Box  
K, Spotlight, Delmar, N.Y.

# WE WILL BE OPEN ALL DAY

# Labor Day

## SEPTEMBER 5th

## 9:00 A.M. —

## 9:30 P.M.

## L.J. MULLEN PHARMACY

256 Delaware Avenue

Elsmere, New York

PHONE 439-9356

**BACK TO SCHOOL****the Carriage Stop**ANOTHER  
MAIN-CARE SERVICE

339 Delaware Avenue - 439-2430 - Delmar

Hours:  
9 to 5  
Monday thru  
Friday**YOU'LL NEED THESE**Any  
Evening by  
Appointment**ALL AT SPECIAL REDUCED PRICES!**TRAVEL &  
STEAM**IRONS**

ELECTRIC

**ALARM CLOCKS**

PORTABLE

**RADIO & CLOCK**

COMB



COLOR OR BLACK &amp; WHITE

**PORTABLE TV**

PORTABLE

**STEREO**

PORTABLE

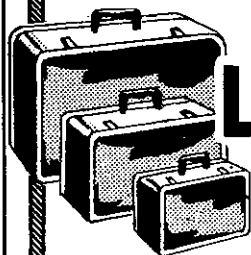
**TAPE RECORDER****REAL  
MONEY-SAVER**

(WHILE THEY LAST!)

LIGHTWEIGHT

**3-piece****LUGGAGE SET****\$11.69****(FOR ALL 3 PIECES!)**

Come in and See This Bargain!



assisted by several Capital District Quarter Horse fanciers. Mr. Phil Chappelle of Lexington, Kentucky, has been invited to judge the show. Show announcer will be popular rodeo personality, Hub Hubbell from Lake Luzerne. The show will start at 8 a.m. with the model classes and continue with the performance classes throughout the day and into the evening under the lights.

The ever-popular performance classes will include calf-roping and barrel racing and events for Youth Activity, plus several classes of open competition in which contestants may compete

with any breed of horse.

The Quarter Horse is the time-honored western ranch horse, roping mount, cow-cutting horse, pleasure riding horse and a favorite of rodeo contestants. He is also the world's fastest short-distance race horse as well as a popular family horse.

Many top-notch Quarter Horses for the eastern states will be competing for case, beautiful trophies and championship points. During the show a drawing will take place on a Prize Quarter Horse Colt of outstanding conformation and bloodlines, the "bred-to-run" kind. Refreshments will be available.

**SLINGERLANDS  
PIANO STUDIO***"Grace Note"**Olive E. Beaupré*

OFFERING SOLO AND 2-PIANO ENSEMBLE

**HE 9-1272****"TIME IS OF THE ESSENCE"  
FOR THAT RETURNING STUDENT***Complete line of Watches*

Starting from

**\$10.95****HARRY L. BROWN** *Jeweler***Thistle Gift Shop**

363 DELAWARE AVENUE AT 4 CORNERS, DELMAR

## At Pinnacle

The Rev. Dr. Dennis Kinlaw is speaking daily at Camp Pinnacle through September 4.



Rev. Dr. Dennis Kinlaw

Services Sunday will be at 11 a.m. and 7:45 p.m. when the Camp closes for this year. The public is invited. Pinnacle and Beaver Dam Roads are approached via route 157 in the Helderbergs.

SUBSCRIBE TO THE SPOTLIGHT

## At Saratoga

"But I don't see why I can't bet the Daily Double to come in third instead of first," said one uncompromising soul at Saratoga Raceway the other night. Actually most bettors have a difficult enough time picking the winners of the first and second races. It may be some comfort to Double players to see what's been happening this season.

The largest double at the Raceway so far this season was the 5-8 combination on June 2, which paid \$760.80. Hundreds of people watched the first and second races that night, but only eighteen winning tickets were sold.

How on earth do the winners pick a double like that? There were a lot of winners here August 23, but the double was a paltry \$9.00. To pick the longshots usually requires luck, hunch betting, or a reliance on a numerical system.

Here are some interesting statistics for the patrons who see no horses but only head numbers racing around the track.

## Classique Dancing School

154 A Delaware Ave.

FALL CLASSES  
BEGIN

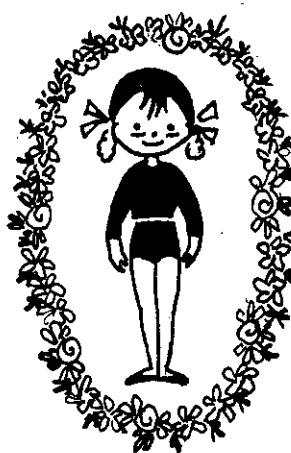
MONDAY, SEPT. 12, 1966

COURSES FOR  
CHILDREN AND ADULTS  
ADULT EVENING CLASSES  
ALL TYPES OF DANCE

BROCHURES MAILED ON REQUEST

HE 9-3331

MRS. B. FOLLETT



# Our Stock Is Complete for the LONG LABOR DAY WEEKEND

You'll Save Money on  
Our Private Labels . . .

FOWLER'S

**Black Label Whiskey**

FOWLER'S

**Gold Label Bourbon**

FOWLER'S

**Club Gin**

FOWLER'S Choice, Blended

**Scotch Whiskey**

# FOWLER'S LIQUOR STORE

SEE ERNIE AND GEORGE FOR BETTER SPIRITS WE DELIVER  
ELSMERE-AT-THE-LIGHT PHONE HE 9-2613

# Rx

# Rx

*Announcement*

On or about SEPTEMBER 6

## NEW SCOTLAND PHARMACY


Route 85 & Route 85A -- Stonewell Shopping Center

**WILL OPEN**

— 24-Hour Phone Service  
— Prescriptions DELIVERED

**PHONE 439-6551**

Pat and Tom Longtin, Props.



**C. M. GROVER**  
**Stationers**

**THE LARGEST SUPPLY  
IN TOWN**

Delaware Plaza  
ELSMERE, N.Y.

SUBSCRIBE TO THE SPOTLIGHT

All statistics are based on the one hundred ten doubles from the beginning of the season through August 20.

The 2-1 double was clicked six times, more than any other combination. The 5-4 and the 1-5 each flashed on the tote board five times so far.

Doubles winning four times this season include the 1-1, 2-4, 3-1, 5-2, and 5-6.

The two slot is tops among the first halves of the daily doubles with twenty-two victories. In the second halves both the one and the four horse have reached the wire first twenty times.

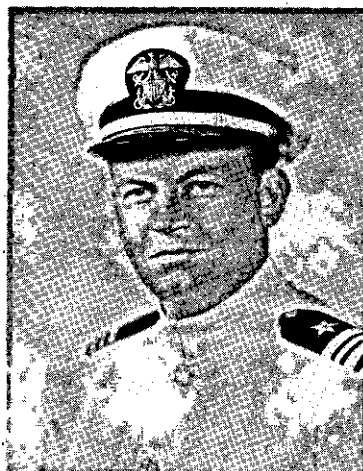
Do the inside post positions offer much advantage to the horse (and bettor)? The first race has seen horses one, two,

three and four cop sixty-one wins, while the outside four posts won forty-nine races. In the second race seventy winners left from the four inside slots and forty won from the four through eight posts.

Several daily doubles have not hit to date and, if your horoscope is in phase, might bring some luck. The 1-7, 3-3, 3-6, 3-7, 3-8, 4-7, 4-8, 5-7, 6-1, 6-7, 6-8, 7-1, 7-8, 8-3, and 8-8 are all past due.

## Promoted

G. Barton Griffin, Staff Supervisor for the Mass. Mutual Life Insurance Company at 259 Lark Street, Albany, N.Y., and Executive Officer of Mobilization



Lt. Cmdr. G. Barton Griffin

Team 3-4 of Albany, has been promoted to the rank of Lt. Commander in the U. S. Naval Reserve.

LCDR. Griffin, who lives at 108 Salisbury Rd., Delmar with his wife and two children, served as Gunnery Officer aboard the destroyer, USS CONY DD508 from 1956-1959.

As Executive Officer of the Mobilization Team, LCDR. Griffin is responsible for the smooth functioning of the Mobilization Process locally in the event of a National Emergency.

LCDR. Griffin's parents live at 233 Lenox Ave., Albany. He was educated at Vincentian High School and Georgetown University, Washington, D.C. where he majored in Political Science.



## Like walking on clouds



Of course you may



use your 1st Trust Charge

SUBSCRIBE TO

THE SPOTLIGHT



SALAD DRESSING  
**MIRACLE WHIP**  
QT. JAR **49¢** PLUS STAMPS

GRAND UNION  
**SALTINES**  
1 LB. PKGS. **2 39¢**

HAFNIA IMPORTED  
**LUNCHEON MEAT**  
12 oz. tins **3 \$1.00** PLUS STAMPS

FLEISCHMANN'S-QUARTERS  
**MARGARINE**  
1 LB. PKG. **38¢**

STARKIST-SOLID IN WATER  
**WHITE TUNA**  
7 OZ. CANS **3 \$1.00** PLUS STAMPS

**100 EXTRA BONUS STAMPS**

With this Coupon and the Purchase of One 2 lb. Pkg. U.S.D.A. Choice

**M. GROUND CHUCK**

COUPON GOOD THURSDAY, FRIDAY, SATURDAY, SEPT. 1, 2, 3  
LIMIT ONE COUPON PER CUSTOMER

**100 EXTRA BONUS STAMPS**

With this Coupon and the Purchase of One 3 lb. Pkg. Grand Union Family Pak

**M. FROZEN BEEF STEAKS**

CUBED COUPON GOOD THURSDAY, FRIDAY, SATURDAY, SEPT. 1, 2, 3  
LIMIT ONE COUPON PER CUSTOMER

WE RESERVE THE RIGHT TO LIMIT QUANTITIES  
WE ARE NOT RESPONSIBLE FOR TYPOGRAPHICAL ERRORS

STOCK UP FOR THE LAST BIG SUMMER

# Holiday Weekend

All Stores Will Maintain Regular Store Hours This Week  
**CLOSED MON., SEPT. 5th, LABOR DAY**



**PORTERHOUSE STEAK**  
lb **89¢** Plus Stamps



**SIRLOIN STEAK**  
lb **89¢**

BLADE CUT **CHUCK STEAK**  
WELL TRIMMED 7" CUT **RIB STEAK**  
BONELESS **CHUCK STEAK**  
TOP **SIRLOIN STEAK**

lb **49¢**  
lb **79¢**  
lb **79¢**  
lb **\$1.19**



**CROSS RIB ROAST**  
lb **89¢** BONELESS



**7" CUT RIB ROAST**  
lb **69¢** Plus Stamps  
OVEN READY



*Fresh Fruits & Vegetables*

CALIFORNIA-LUSCIOUS RIPE  
**CANTALOUPE**  
lge. jumbo 27 size **3 89¢** Plus Stamps

LOCAL GROWN **SWEET CORN**  
LOCAL GROWN ITALIAN **PRUNE PLUMS**

**12** GOLDEN EARS **49¢**  
**2** LBS. **29¢**

PRICES AND OFFERS EFFECTIVE THURSDAY, FRIDAY, SATURDAY, SEPT. 1, 2, 3





# Freikofer's

**BATTER WHIPPED SUNBEAM BREAD**  
**NO HOLES! NO STREAKS!**

**PHONE HO 3-2221**

**FOR DAILY HOME DELIVERY . . .**  
**OF DELICIOUS BREAD, ROLLS, CAKE**

**SPECIALS FOR LABOR DAY**  
**LOUISIANA RING . . . . . 79c**  
Available Thursday, Friday and Saturday, September 1st, 2nd and 3rd  
Be sure to order this popular favorite for your Holiday festivities.

**Picnic Supplies**  
Order all your picnic or Bar-be-que supplies for the last big weekend of the summer.  
Hot Dog Rolls (8)      Hard Seed Rolls (6)      Hot Dog Rolls (10)  
Hamburg Rolls (8)      English Muffins (6)      Hamburg Rolls (10)  
Sandwich Bread      Buffet Rye

**THURSDAY**  
**Sept. 1**

- ☐ Strawberry Rhubarb Pie.....79c
- ☐ Chocolate Fudge Cups.....39c
- ☐ Soft Molasses Cookies.....39c
- ☐ Orange Sheet Cake.....59c
- ☐ Jelly Roll.....59c
- ☐ ● Butter Parker House Rolls.....44c
- ☐ ● Old Fashioned Bread.....32c

Holiday Favorite!

**CHOCOLATE CHIPS**.....**59c**

Great For Picnics!

**FRIDAY**  
**Sept. 2**

- ☐ **RED RASPBERRY PIE**.....79c
- ☐ Gold Creme Cups.....39c
- ☐ Hermits.....39c
- ☐ Gold Sheet Cake.....59c
- ☐ Orange Sheet Cake.....59c
- ☐ Square Angel Food.....59c
- ☐ ● Butter Rolls.....33c
- ☐ ● Thin Sliced. Square.....28c

Holiday Favorite!

**FAMILY COFFEE CAKE**.....**98c**

Enough For Everyone—

**SATURDAY**  
**Sept. 3**

- ☐ **LOUISIANA RING**.....79c
- ☐ Dunketts.....32c
- ☐ Fruit Cookies.....39c
- ☐ Maple Layer.....69c
- ☐ Strawberry Chiffon.....49c
- ☐ Pan Rolls.....33c
- ☐ King Size (in the bag).....33c

Holiday Favorite!

**APPLE PIE**.....**79c**

Better Than Ever—  
A Wonderful Dessert!

**MONDAY**  
**Sept. 5**

**Monday, Sept. 5**  
**LABOR DAY - - - No Deliveries Today!**  
**Please Drive Safely**  
The life you save may be one of our customers — we need  
all of you!

**TUESDAY**  
**Sept. 6**

- ☐ **CALIFORNIA RING**.....79c
- ☐ Blueberry Pie.....79c
- ☐ Salt Free Bread.....31c
- ☐ Cinnamon Raisin Bread.....39c
- ☐ Sugar Cookies.....39c
- ☐ ● Sunbeam Bread.....28c
- ☐ ● Cloverleaf Rolls.....35c

Holiday Favorite!

**SPICE SHEET CAKE**.....**59c**

Old Fashioned Goodness—  
You'll Love It!

● Indicates items available every day. The above is not a complete list of available items.  
For further information ask your Routeman or call the Bakery.

### Last Concert

A Folk Singer, the Rev. James Ivan Bordon, will be featured on Saturday, September 3, at Conkling Hall, Rensselaerville, at 8:30 p.m. This is the last in a series for the Benefit of the Rensselaerville Library. There will be special rates for children.

Mr. Bordon is pastor of the Averill Park Methodist Church, and has been heard as a folk singer over radio and through his recordings as well as in concerts in this vicinity. For accompaniment he uses autoharp, dulcimer as well as guitar. His repertoire includes work songs, ballads, blues songs, and folk songs from around the world, some of which have never been published.

A graduate of Cornell University and Yale Divinity School, he was director of the Yale Divinity Choir from 1951-54. Before going into the ministry he was a musician by training and profession.

### Winner

The Arts & Crafts Department at the Altamont Fair is one of the largest displays on the grounds and with the hundreds of items exhibited it would be impossible to list all the winners according to Mrs. Donald Terhune, superintendent of the department.

Crewel embroidery was the feature exhibit at the Fair this year. The Best of Fair award was won by Mrs. Wayne Fry of Delmar.

### New Exhibit

Antique Quilts and Handwoven Coverlets from the collection of Mr. William L. Lassiter are currently being shown in the Community Exhibit Room at City and County Savings Bank, as announced today by bank

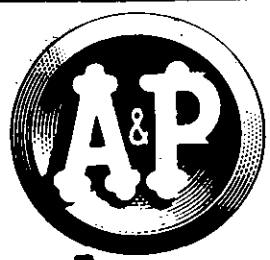
**von Bank's**  
**TV SERVICE**  
**HE 4-5887**

Quality—Responsibility—Honesty

# Freikofer's

**QUALITY BAKING**  
**IS OUR TRADITION**





where would we be without them?

We wouldn't be America's largest food retailer.

That's for sure.

We're talking about the clerks who still manage a smile and a "Thank You" late Saturday afternoon after a busy week's work—and even on days when they aren't feeling tip-top.

We're talking about our supervisors, store managers, department heads and their assistants who shape the backbone of A&P.

Those behind the scenes, too—literally scores of thousands of devoted employees in our offices, warehouses, and other facilities.

Without all these fine people, there wouldn't be an A&P—and we know it.

They work hard...we're proud of them. Like most of us, most of them will rest too...on Labor Day.

COPYRIGHT © 1966 THE GREAT ATLANTIC & PACIFIC TEA CO., INC.

GLAMALON SEAMLESS

**NYLONS** 3 pair \$1

IN BLUSH OR MIST SHADES. 1st QUALITY MESH...SIZES 9 - 11

Fresh From Jane Parker!

- PEACH or LEMON PIE Jane Parker 2 1 lb. 8 oz. pies 99c
- POTATO CHIPS Jane Parker 1 lb. bag or 12 oz. bot. 55c
- DONUTS Jane Parker King Size pkg. of 12 49c
- WHITE BREAD Jane Parker Quality Loaf 2 1 lb. lvs. 43c

NOW AVAILABLE AT YOUR A&P  
**NEW PLAID STAMP CATALOG**

Prices effective Wed., Aug. 31 thru Sun., Sept. 4

LONG WEEKEND AHEAD PLEASE SHOP EARLY!  
**A&P STORES WILL BE CLOSED MONDAY, SEPT. 5**



"SUPER RIGHT" 14 to 18 lb. SHORT SHANK FULLY COOKED

**SMOKED HAMS**

SHANK PORTION

LB. **39c**

SHANK HALF NO SLICES REMOVED BUTT HALF

lb. **49c**  
lb. **59c**

BUTT PORTION lb. **49c**  
THESE ARE GENEROUS SIZE A&P PORTIONS...NOT ENDS!

SUPER-RIGHT  
**SIRLOIN or RIB**

NONE PRICED HIGHER  
**STEAK** lb. **89c**  
YOU DON'T PAY FOR EXCESS FAT OR BONE AT A&P

Grade A 8 to 14 lb. avg.  
**Turkeys** lb. **39c**

SUPER-RIGHT SKINLESS  
**FRANKFURTERS**  
lb. pkg. **69c** | 2 lb. pkg. **\$1.35**

Super-Right None Priced Higher  
**BONELESS HAM** lb. **\$1.39**  
Morrell's or Armour's  
**CANNED HAM** 3 lb. tin **\$2.99**

Super-Right None Priced Higher  
**BEEF LIVER** sliced lb. **47c**  
Super-Right Liverwurst or  
**BOLOGNA** in chunk lb. **59c**  
Fried — Just Heat 'n Serve  
**HADDOCK** lb. **69c**

U.S.D.A. INSPECTED FRESH CUT UP  
**Chicken** lb. **59c** Breast **55c** Legs  
NONE PRICED HIGHER

Holiday Fruits & Vegetables!

FULLY RIPE  
**Honey Dews** 59c  
NONE PRICED HIGHER

Italian **PLUMS** 2 lbs. **39c**  
Seedless **GRAPES** lb. **23c**  
Ripe Yellow **BANANAS** 2 lbs. **29c**

Stock Up on Fine Groceries!

**FACIAL TISSUE**  
**PEACHES**  
**CHARCOAL**  
**TOMATOES**

Camellia 6 200 2-ply pkgs. **89c**  
Sultana Freestone 3 1 lb. 12 oz. cans **89c**  
A&P Brand Briquets 20 lb. bag **88c**  
Progresso Imported with Tomato Paste 2 lb. 3 oz. can **39c**



## TOLL GATE

Slingerlands



Sip and Spoon,  
Ice Cream Soda

SUBSCRIBE TO

THE SPOTLIGHT

If You Are A

# TALL

Girl  
With Tall  
Problems,  
Shop

## DUNBAR'S tall shop

313 State St., Schenectady  
Open Thurs. 'til 9 P.M.

president Frederick W. Stolz.

Mr. Lassiter is not only a well known authority on antique quilts and coverlets but is also a well known collector of Shaker Arts and Crafts. In addition, he has published books on Shaker Cookery and Shaker Architecture.

The exhibit can be seen at the bank's Downtown Office, at 100 State Street, Albany, weekdays from 9:00 a.m. to 3:00 p.m. and, in addition, Thursdays until 8:00 p.m. through September 20.

## IT'S A WOMAN'S WORLD



"How Life Has Changed for Women" is the theme of the State Commerce Woman's Program exhibit at the annual New York State Exposition which opened Tuesday in the permanent fair grounds in Syracuse. In keeping with the 125th anniversary theme of the Exposition, the display has been divided into two sections, featuring an 1841 home setting with all its manual equipment and one of today, complete with automated appliances.

Accessories for the early setting are from the Farmers' Museum in Cooperstown which is administered by the New York State Historical Association. The modern setting, a kitchen was designed by Edwards & Son Department Store in Syracuse.

Visitors to the Exposition exhibit will see wares that tell of life as it was in the 1840's.

## CAT HAVEN FOR CATS ONLY

Individual Care in Private Home  
Ethel Fay ROckwell 5-2715

Our September Brides '66

Marilyn Robinson  
Gail Fredericks Carol Webb  
Marilyn Stauch Ann Pemrick  
Antoinette Palmer  
Barbara Mann Judy Leavitt  
Sheila Fisher Margaret Goodwin  
Carolyn Dragotta  
Carol Calligeris  
Susan Campbell Judy Ann Buck  
Barbara Czechowicz  
Cynthia Thomas Sharlen Glenn  
Elizabeth Gladstone  
Helen Sheehan  
Mildred R. Rudeen

FRANK H. *Adams*  
JEWELERS - SILVERSMITHS

Cor. N. Pearl & Steuben Sts., Albany  
Open Thursdays 'til 9 HO 3-3278

Shop all 14 Free Park & Shop Lots

## PRICE GREENLEAF

### HARDY GARDEN MUMS

**\$1.29** In Flower and in Bud

50 lbs. <b>GARDEN LIME 59¢</b>	White <b>MARBLE CHIPS</b> 50 lbs. <b>\$1.00</b> 2/50 lbs. <b>\$1.95</b>	<b>GARDEN BARK</b> 50 lbs. <b>\$2.97</b> For Mulch
---	--	---

## FENCING POST RAIL - PICKET - MILLED STOCKADE - STOCKADE PATIO

TREES - EVERGREENS - FLOWERING SHRUBS  
in Large Supply

Monday thru Saturday 8 to 6  
Wednesday & Friday nights to 8



14 BOOTH ROAD, DELMAR  
Off Delaware Avenue, Next to A & P  
HE 9-9212

A dry sink reminds us that running water was not always available; a candle mould recalls that the electric light is really quite a recent invention; and a wagon foot warmer is a testimonial to a far-off day when traveling time was long, and pushbutton heaters weren't even a dream. Baskets for draining cheese, a butter churn, a flat iron, a dough box, a soap kettle, a spinning wheel, a sausage grinder and a hog scraper in the setting, each attest to the arduous tasks done by women about the time the first New York State Fair was being planned.

By contrast, the 1966 kitchen adjoining the early setting, operates by machinery, which runs according to pre-set plan without anyone around to supervise it. Dinner cooks in the automatic range and laundry goes through its wash and rinse cycles while

mother plays golf, chauffeurs the children to dancing class, Scouts and Little League, does volunteer work at the local hospital and purchases supplies for the house and the family.

Cooking would be a breeze with the range which has an automatic stirrer for long sessions with gravies and sauces, a surface unit that shuts off if a pan boils dry and a broiler that does two sides at once. And to clean the oven, even to remove spilled pie juice, you just turn a switch to the word "clean" and shut the oven door.

The kitchen machines that do her work, all by Westinghouse, are as decorative as they are useful. The tall, slim refrigerator has French doors. The washer-dryer stacks one atop the other to conserve space and are enclosed behind louvered doors. There's even a reflection of the past with cabinets of antique



**1<sup>ST</sup> FIRST TRUST COMPANY**  
**OF ALBANY**

Delaware Avenue Office: 403-407 Delaware Avenue  
Main Office: State & Broadway    West End Branch: 581 Central Ave.  
South End Branch: 135 So. Pearl St.    Colonie Branch: 1230 Central Av.  
Washington Av. Branch: 252 Washington Av.  
Western Avenue Branch: 1215 Western Avenue

SUE ANN . . .

Wine Jellies

Cheese Spreads

with Rum - Port - Brandy - or Sauterne

Available at

**WALLEY'S FARM**

924 New Scotland Road

IV 2-0513



**SLINGERLANDS MARKET**

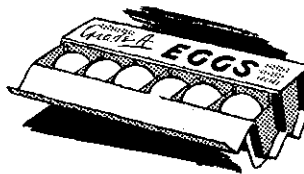
1526 N. Scotland Rd., (next to Fire House)  
Slingerlands, New York

Labor Day Weekend Specials

**CHICKENS**  
**FRYERS** Whole **29¢**  
CUT UP lb.  
3 3/4 lb.

**BREASTS** **59¢**

IGA TABLERITE LARGE  
GRADE A



**EGGS**  
**49¢**  
DOZ.

Nestle's

**QUICK** lb. **29¢**  
can

Heinz Tomato

**KETCHUP** 20 oz. **29¢**  
bot. Reg. Bag

Nestle's

**MORSELS** Jumbo **19¢**  
Bag 3 1/2 lb.

**CORN** Homegrown doz. **39¢**  
ears

maple finish, a plate rail and carpeting on the floor. But, there are constant reminders of the new pushbutton life — an electric can opener, an electric knife sharpener, an automatic frying pan, a blender — and a portable TV.

According to Guin Hall, State Commerce Deputy Commissioner who heads the Woman's Program, life has changed so rapidly for women in just the last twenty years, it is almost impossible to imagine how women managed their homes and families under the near-primitive conditions that prevailed a century and a quarter ago. "Today's young mother fits into a day's schedule what would have taken her maternal ancestors weeks or months to accomplish. For example, outfitting the children for school

began, for the mother of 1841, with spinning the yarn, weaving the cloth and then sewing the garments by hand, since the sewing machine was not to be patented until 1846. Today, the outfits can be obtained in a day or two of shopping."

However, Miss Hall points out, "Today's women are not sitting leisurely by while their automated equipment does their work and manufacturers prepare their foods and clothing. They have answered the calls for help from their communities. They may not sit by the fire-side spinning any more, but they're doing new things equally as useful, such as attending school board meetings, raising money for charitable causes and volunteering their time to help others. As our population has



**BETHLEHEM**

**ASSOCIATES INC.**

**TRY ONE OF OUR BRICK  
PATIOS FOR SUMMER  
ENJOYMENT**

"New Lawns Our Specialty"

P.O. BOX 94

DELMAR, NEW YORK

439-2074 - If no Answer 439-4606

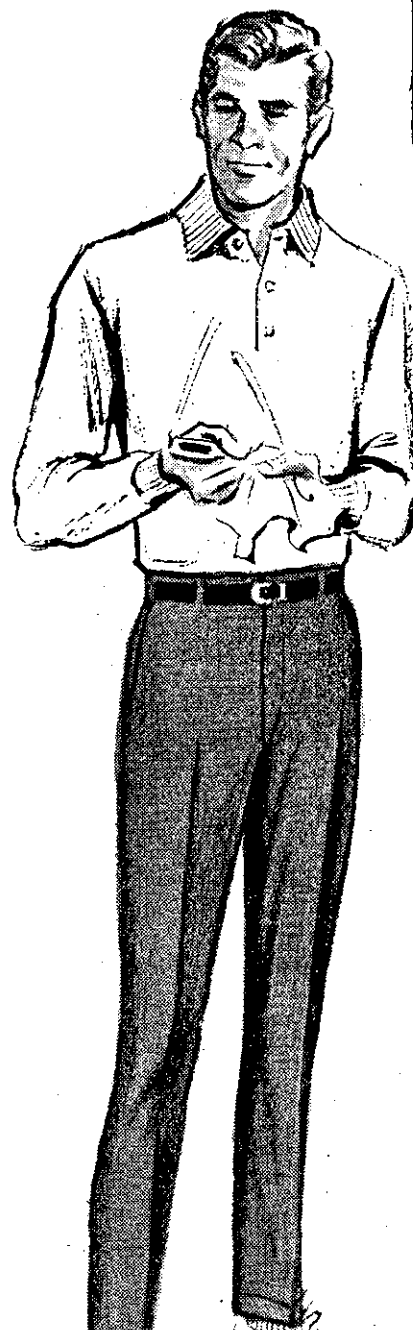
**SHOP DOWNTOWN  
SHOP T. ARTHUR COHEN**

**The Shoe That's  
CAMPUS  
BOUND!**

**Shuffle**



THE



**LEVI'S®  
STA-PREST®**  
*Sportswear*  
**Never Needs Ironing!**

**The Famous  
Levi's Sta-Prest  
Casuals  
For School  
And Campus!**

Levi's "Sta-Prest" hopsack slack in a blend of 65% Dacron and 35% Rayon. Traditional trimcut belt loop model. Sizes 30 to 38 in Brass, Tobacco, Sage or Charcoal **\$8.00**. Mr. Levi's for men in sizes 30 to 42, same colors **\$9.00**.



In beige,  
gingerbread or grey

19<sup>95</sup>

*Last Word in Fashion . . . First Word in Comfort!*

Puddleproof plush pig with nitro crepe  
molded wedge sole. Comfort-engineered  
Locke last. Special steel shank helps hold  
proper fit. Choice of colors.

*First Trust Charge Accounts Invited*

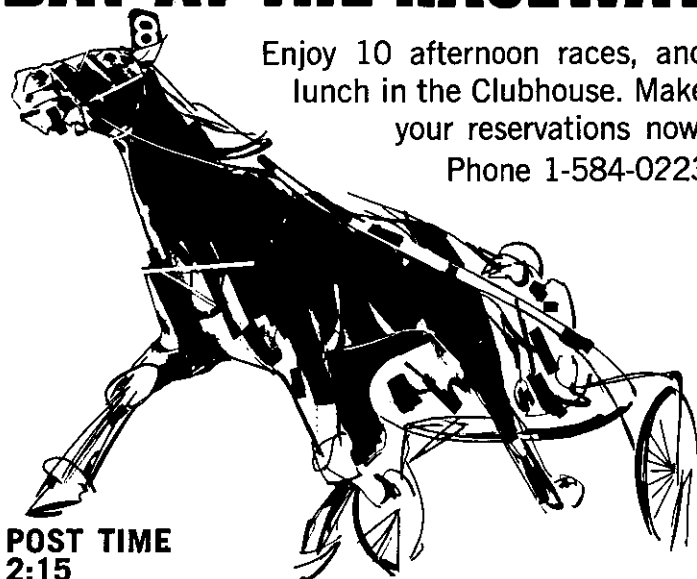
**VISIT YOUR FOOT DOCTOR**

**T. Arthur Cohen**

● **SHOE SPECIALISTS** ●

Open Thurs. 'til 9—Open Sat.—Park n' Shop Member  
81 CHAPEL ST., opp. Ten Eyck ALBANY, N.Y.

# LABOR DAY IS FAMILY DAY AT THE RACEWAY



Enjoy 10 afternoon races, and  
lunch in the Clubhouse. Make  
your reservations now.  
Phone 1-584-0223

POST TIME  
2:15

# SARATOGA!

Children over five admitted with an adult at regular prices.



The "Sta-Prest" Bengaline  
dress slack in continental  
styling comes in Juniors  
(regulars or slims) at \$6.00.  
Preps \$7.00 and Students  
\$8.00. Choose from Olive,  
Black or Pewter.



Sta-Prest casuals in chino or  
corduroy. Tan, Black or Olive in  
the belt loop model. Junior sizes  
(regular or slims) \$5.00 for chinos  
and \$7.00 for corduroys. Prep  
chinos at \$6.00, corduroy at \$8.00.  
Students chinos at \$7.00,  
corduroys \$9.00.



Shop Monday: Downtown 10 to 5:30; Stuyvesant 10 to 9



\$8.50 to  
\$10.00

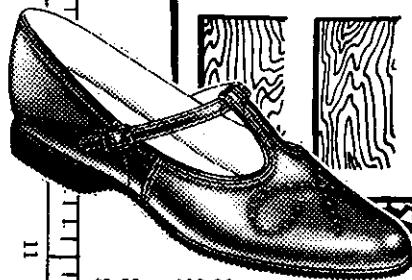
# A golden Rule

FOR BACK TO SCHOOL:  
START WITH

## Little Yankee Shoes

FIT FOR THE CHILD YOU LOVE

Start your child off to school on the right foot in Little Yankees professionally fitted by our trained staff. For construction, quality, styling, value and FIT . . . Little Yankee goes to the head of the class!



\$8.50 to \$10.00

## Jules Shoes

CHARGE ACCOUNTS

WESTGATE SHOPPING CENTER  
Open Evenings 'til 9 P. M.

increased, the needs of people have increased. The numbers of the sick, the elderly, disabled, the poor and the homeless have multiplied. And women, now partially released from home responsibilities, have volunteered their time and talents toward helping to meet the many needs."

## HOW TO HELP YOUR CHILD IN SCHOOL

The kind of student your child becomes may depend on the help and encouragement, or neglect and indifference, he encounters at home in the habit-forming years of his life. The wrong attitude can keep him from developing his innate desire to learn and to educate himself.

These pointers from school equipment specialists at Oli-

vetti Underwood may enable you to help your child make his mark.

1. Show sincere interest in his school work and praise him whenever he merits it. Even in the first grade you can tack up his pictures on a kitchen wall.

2. Be firm about his home-study without nagging. Make sure he follows his schedule—and don't offer bribes.

3. Make it a policy to look at test papers returned to your child. Encourage him to check them over carefully to find out where he missed the mark, then relearn these points.

4. Provide him with the proper tools for learning: his own desk with good lighting, a comfortable chair, a dictionary and a portable typewriter. The Lettera portable is ideal for children since it weighs only 9½ pounds, but features



## It's August Fur Time!

Menchel's presents a provocative preview of fall fashions in furs . . . fresh, choice selections of quality furs with creative distinctive styling. Add to this the assurance that a Menchel Original is the finest fur value in the area. Menchel's invites comparison!

## MENCHEL'S

quality furs with fashion flair

56 North Pearl Street, Albany

HE 4-2233

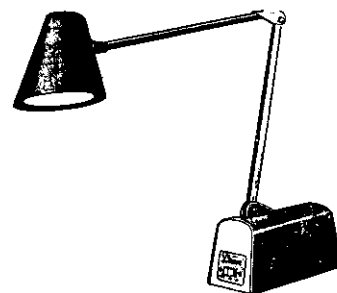
Open Thursday Evenings

Closed Saturday

## A KEY TO BETTER MARKS IS PROPER LIGHTING

Help your student to better grades by selecting student lamps from the largest assortment in the Capital area.

ONE-OF-A-KIND FLOOR SAMPLES, TABLE AND FLOOR LAMPS, NOW AT GREATLY REDUCED PRICES!

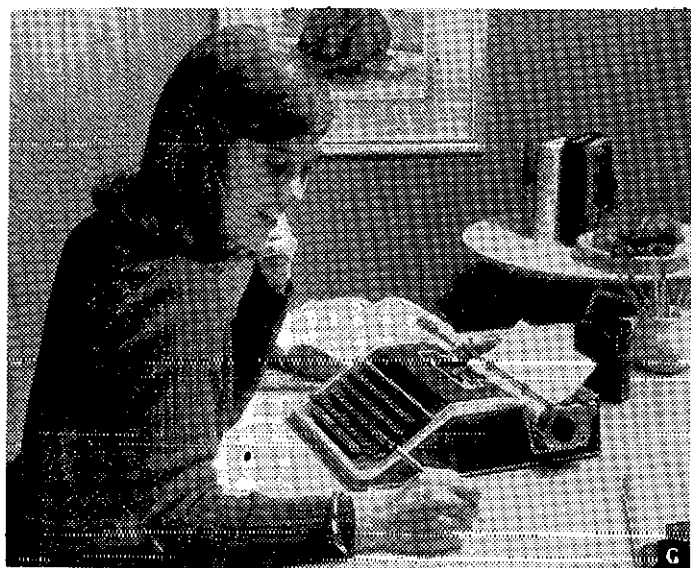


## MEGINNISS ELECTRIC SUPPLIES, INC.

370 BROADWAY, ALBANY . . . HO 3-3103

Ample Free Customer Reserved Parking at rear of store

Open Sat.  
'til 12 Noon



"big machine" touch. Type-written homework is always neater and easier to read, and some teachers say that even the content of a student's work improves with typing.

5. If you have reason to believe that your youngster is being overloaded with homework, talk it over with the school principal.

6. You'll know that you've been helping your child constructively with his studies

when you can see his abilities become strengthened so that he can later proceed on his own with self-confidence, assured of your devoted interest.

**EVEREST & JENNINGS**  
**WHEELCHAIRS**  
FOLDS TO 10"  
RENTALS & SALES  
Albany Surgical Co.  
HE 4-5716

## BEST PLACE TO BUY SWEET CORN

MELONS - POTATOES - CUCUMBER PICKLES  
TOMATOES - APPLES - OTHER VEGETABLES

**HASWELL FARMS**

Route 32 at Murray Ave., Delmar

HE 9-3893

**FALL WOOLS  
CORDUROY  
QUILTED COTTONS**

In Large Selection - Right Here in Delmar!

**HOURS**

Monday thru Friday 10:00 - 5:30  
Saturday 10:00 - 4:00 Closed Tuesday

**THE FABRIC GARDEN**

244 DELAWARE AVENUE

HE 9-4432

SLICED, QUARTERED Family Size Package  
**PORK LOINS** 10 to 12 Chops **69¢**  
**Pork ROLLS** **65¢**  
**HAMS** Rath's Honey Glazed Canned 4 lb. can **4.79**  
**Ground CHUCK** 'Extra Lean 1 lb. **73¢**  
**Corned BEEF** Tobin First Prize, Dublin Brand, Brisket 1 lb. **69¢**

MEAT DEPT. PHONE: 439-9419

Custom Cut and Wrapped  
**FREEZER BUYS**  
Special Freezer Paper Used  
**CHOPPED SIRLOIN PATTIES** (made up to order)  
**HINDQUARTER** 1 lb. **69¢** **FOREQUARTERS** 1 lb. **49¢**  
**SIDES OF BEEF** U.S.D.A. CHOICE 1 lb. **59¢**

BABE RUTH or BUTTER FINGERS

**CANDY BARS** 10 pkgs. **29¢**

RIVER VALLEY FROZEN

**Strawberries or Raspberries** Mix or Match 3 pkgs. **1.00**

**HEAVY CREAM** ½ Pint **25¢**

RIVER VALLEY FROZEN

**CRINKLE-CUT POTATOES** 2 lb. bag **25¢**

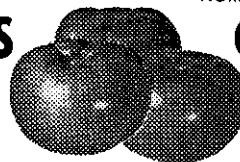
## PRODUCE SPECIALS

HOMEGROWN

HOMEGROWN SOLID HEAD

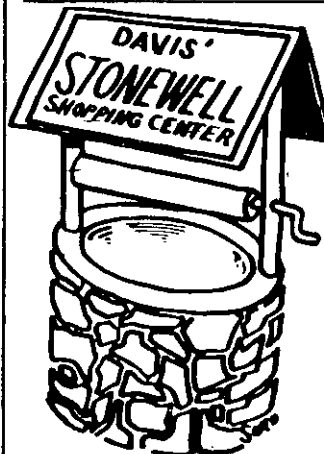
**TOMATOES**

10¢ lb.



**CABBAGE**

3 lbs. **25¢**



JUNCTION HIGHWAYS 85 & 85A  
NEW SCOTLAND, NEW YORK

HE 9-5398

Open Daily and Sundays  
10 A.M. to 10 P.M.

Reserve right to limit quantities  
Prices effective: Thurs., Fri., Sat.

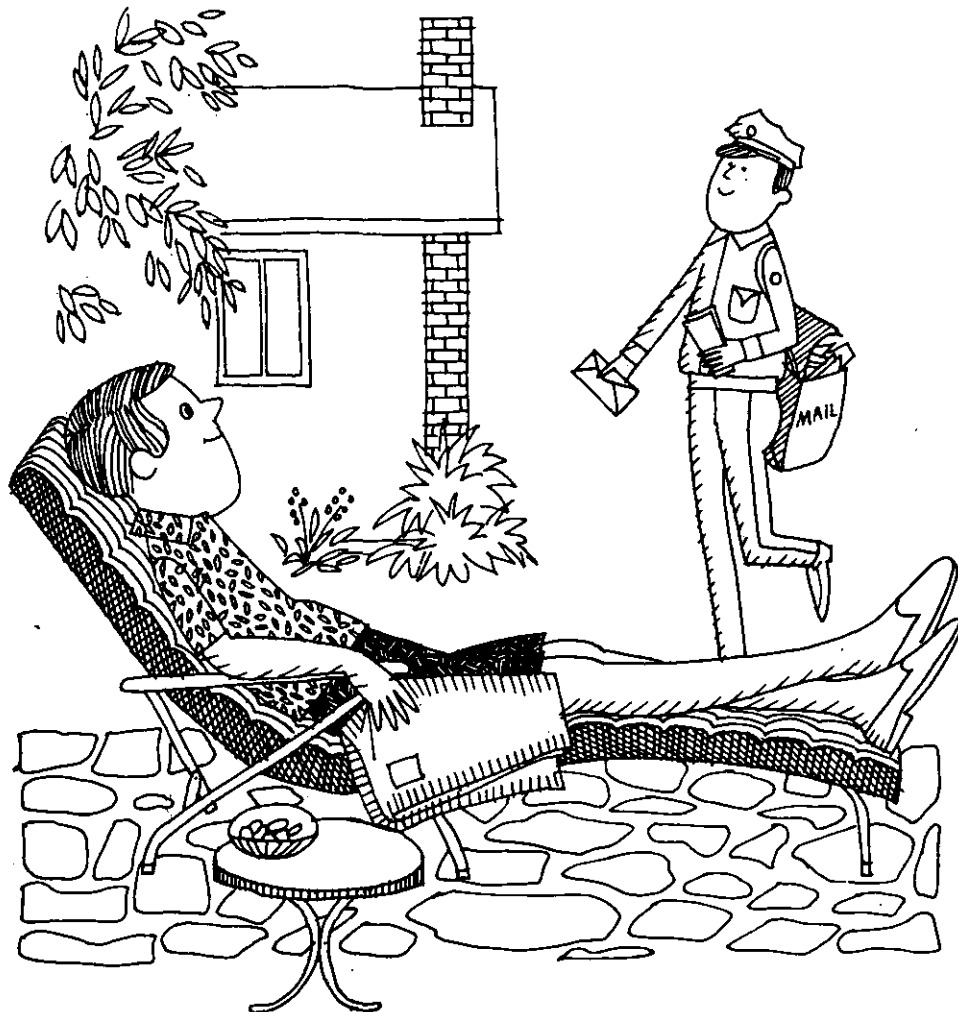
(9/1, 9/2, 9/3)



# Want to get rich? Save regularly.

## Save by mail, postage free

Pretty soft for regular savers at National Commercial. Not only do your savings add up fast where interest is compounded and credited quarterly, but deposits by the 10th of each month earn interest from the 1st. And it's easy to save regularly with our postage-free, save-by-mail service. Even easier if you wish us to transfer funds from your checking account with our Automatic Saving plan. Stop in. Start your "get rich" plan an easy NCB way.



DELMAR

BECKERS CORNERS  
Mondays, Wednesdays  
9 to 11 a.m.

BERNE

Tuesdays, Fridays  
3 to 5 p.m.

ELSMERE

WESTERLO

Mondays, Wednesdays  
Noon to 2 p.m.



NATIONAL  
COMMERCIAL BANK  
AND TRUST COMPANY

MEMBER FEDERAL DEPOSIT INSURANCE CORPORATION

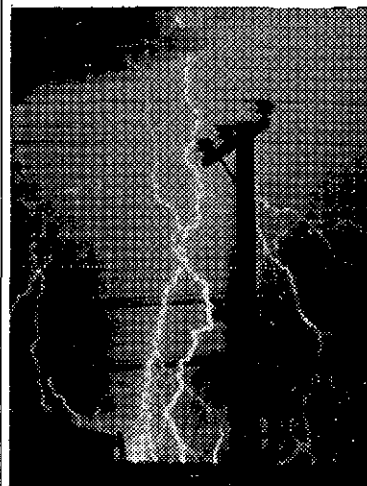
FULL SERVICE BANKING through more than 50 offices in Northeastern New York

## WHAT YOU SHOULD KNOW ABOUT LIGHTNING

When caught outdoors in a sudden thunder squall, do you sprint for the nearest tree that will give you dense rain cover? When indoors with lightning flashing and thunder crashing overhead, do you unplug electric appliances?

Both are common reactions during electrical storms. And both are typical violations of safety rules that contribute toward hundreds of needless lightning casualties every year.

Lightning strikes the earth about nine million times a



day, kills about 400 people in the U.S. each year, and caused more than \$200 million in property damage last year.

Experts who study lightning phenomena at General Electric's High Voltage Engineering Laboratory in Pittsfield, Mass., say that much of this annual toll of lives and property damage is unnecessary. Simple precautions will minimize the chance of being struck by lightning when caught in a thunderstorm, and modern protective equip-

## Ed Traeger LANDSCAPING

Now is the time for new lawn seeding and old lawn rejuvenation.

FREE ESTIMATES

Residential - Commercial  
Slingerlands IV 2-1794

ment can eliminate or reduce lightning damage to homes and other structures.

When taking shelter in the open, avoid hilltops, isolated trees, wire fences, or small exposed sheds. A tree or other object in the path of the storm may serve as an electrical conductor or "ladder" which ground charges climb to strain toward their opposites in the cloud.

At home, stay away from open doors or windows, fireplaces, and electrical equipment. Do not take a shower or bath during a thunderstorm and avoid using the telephone. When lightning is striking near your home and you choose that moment to unplug appliances, you are putting yourself in the same danger that you are seeking to protect your appliances from—a surge of lightning current through the house



wiring.

While lightning rods can protect homes from damage by direct lightning bolts, insurance statistics reveal that 90 per cent of damage claims resulting from lightning activity are the result of electrical surges—lightning which strikes near power lines, pro-

We'll make your  
motor  
sing



- \* Engine Tune-up
- \* Front End Alignment
- \* Automatic Transmission Service
- \* Modern Equipment
- \* Skilled Mechanics

## BAILEY'S GARAGE

Phone Delmar HE 9-1446  
Oakwood Rd., Elsmere

HAVE YOUR CHILDREN'S EYES CHECKED NOW



**DiNapoli & DiNapoli**



**PRESCRIPTION OPTICIANS**  
Serving the Eye Physician and  
his Patients

219 Lark Street, Albany  
Telephone HQ3-4340

**BETTER SIGHT  
FOR  
Better Grades**

THE EYES are the one part of the body whose practical efficiency can usually be kept as good as ever, through the skill of modern science.

\*A medical eye examination by an EYE Physician (M.D.), also helps detect the first signs of the diseases of later life, giving you the best chance of maintaining the physical efficiency of your entire body!

**OPEN SATURDAY**  
9 A.M. to 3 P.M.  
(Starting Sept. 8)

In Person . . .

**DEL REEVES**

FRIDAY - SATURDAY - SUNDAY

September 9, 10, 11



**TEX RITTER**

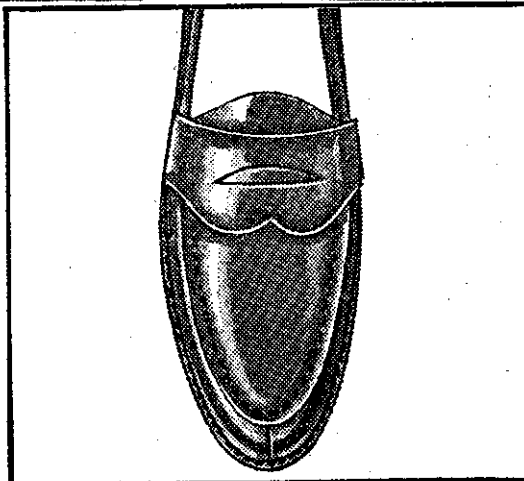
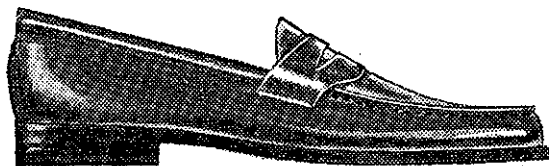
SATURDAY - SEPTEMBER 10 (Only)

NEW

**DOUBLE B RANCH**

Route 9 - North of Latham Circle

Waldman Shoes



OPEN ALL DAY SATURDAY

OPEN ALL DAY SATURDAY

OUR GIRLS' SLIP-ONS DON'T SLIP OFF

They're designed to stay on the foot. Snugly. Comfortably. With none of that loose, sloppy on-and-off clomping in the heel. Our Jumping-Jacks slip-ons are made of soft prime leather, so they wear and wear.

**MISSES and TEENS**

Sizes 12½ to 4—4½ to 10—AAA to C

You'll Find Jumping-Jacks® At

MEMBER  
PARK  
'N'  
SHOP

**Waldman's**

FIRST  
TRUST  
CHARGE

Shoes for Tots to Teens

94 State St., opposite Ten Eyck Hotel

**—ANNOUNCING—  
Deluke Ready Mix Plant No. 2**

LOCATED AT  
**Voorheesville Ave., Voorheesville, N.Y.**

A completely automated batching plant  
approved by the New York State Dept. of Public Works  
Modern in Every Detail  
All Trucks Radio Dispatched

**DELUKE READY MIX CORP.**

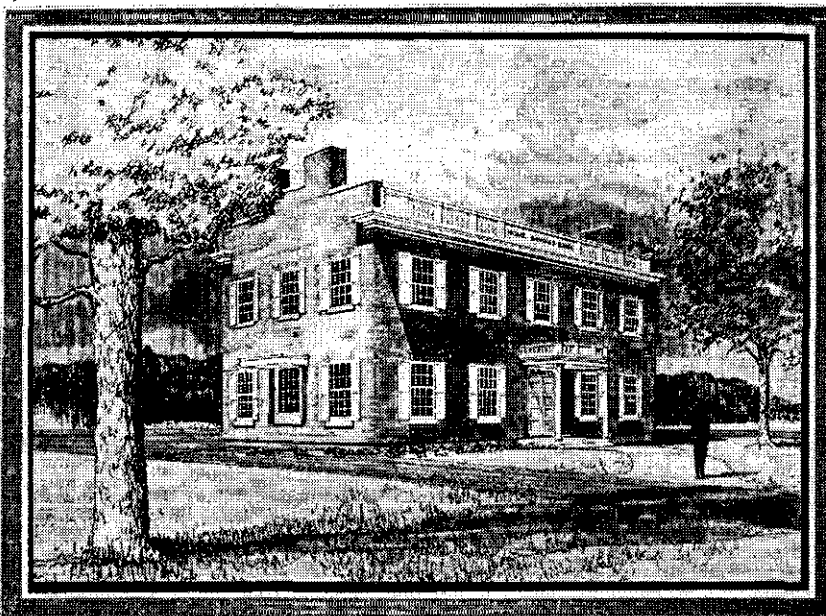
Phone 765-2892 374-4454

Hours 7-5 Daily

**INSURANCE  
SCHOOL**

Apply 161 Delaware Ave., Delmar or call Miss Lamb at 439-9341 Friday night and Saturday. Instruction in casualty and property insurance. Preparing for New York Agents and Brokers December examination. Starting date Friday, Sept. 9.

**STAGE 6: The fulfillment...**



**THIS IS HOW WE ARE BEGINNING TO LOOK AS WE  
APPROACH COMPLETION.**

**Our new Colonie Office at 34 Wolf Road,  
directly across from MACY'S, will be a bank  
of distinction - the finest structure of its  
kind in this area.**

**WATCH FOR OUR OPENING IN LATE SEPTEMBER  
MEANWHILE, USE OUR TEMPORARY OFFICE AT 8 WOLF ROAD**

**THE**

**HOME SAVINGS BANK**

**94 YEARS OF SERVICE TO SAVERS 1872-1966**

•MAIN OFFICE  
11 No. Pearl St.

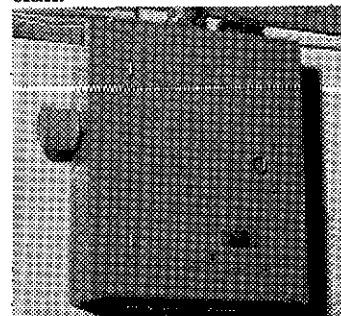
—CENTRAL AVE. OFFICE—  
163 Central Ave.

—COLONIE OFFICE—  
Wolf Road

MEMBER OF FEDERAL DEPOSIT INSURANCE CORPORATION

ducing extremely high voltages which are carried into the home through the building's electrical system. Such surges can ruin a structure's wiring, destroy electrical appliances, and cause fires.

Property owners can now protect their house wiring and appliances from lightning surges with an inexpensive home lightning protector. The base-ball sized device, developed by General Electric, is connected at the service entrance switch (fuse box) and can be installed in a few minutes by any qualified electrician.



When lightning causes an electrical surge, the protector automatically diverts the surge to electrical ground, preventing damage to home wiring. As soon as the surge is discharged, the protector is ready to work over and over again. The action takes place without disrupting electric current and occurs so quickly that lights won't even flicker!

**Top Soil at its Finest!**

Rich, specially prepared, sandy loam or sandy clay loam. J. W. MICHAELS CO., INC., LANDSCAPE CONTRACTORS. HE 9-3823.

5 P.M. FRI.  
TO  
9 A.M. MON.

**AVIS**  
RENT A CAR

**WEEKEND SPECIAL**

Rent a Car **7<sup>95</sup>**

PLYMOUTH

Per Day Plus 10¢ a Mile

For Reservation, Phone  
**IV 9-5487**

**Avis Rent A Car**

INQUIRE ABOUT OUR LOW TRUCK RENTAL RATES

The device is listed by Underwriters' Laboratories, Inc. (UL)

According to the Lightning Protection Institute, a full lightning protection system includes, in addition to such a device, lightning rods or air terminals; conductors, grounds; and tie-ins to large metallic parts.



Captain John D. Crysler arrived home in Delmar on August 21 after serving a year in the Mekong Delta as advisor to the Viet Nameese Army. Capt. Crysler is married to the former Carol Ruddle also of Delmar. They live at 40 Hawthorne Avenue. After a 30-day leave, Capt. Crysler has been assigned as ROTC instructor at a branch of Pennsylvania State University near Philadelphia. Both the Captain and Mrs. Crysler are graduates of Bethlehem Central High School, Class of '59.

★★★★  
Subscribe to The Spotlight

"Try the Popular"

## La Casa RESTAURANT

Selkirk, New York  
(Formerly Altieris)

- Specializing In -  
ITALIAN-AMERICAN FOODS!

Famous for Delicious  
SEA FOODS!

Open daily from 11:30 A.M.-10  
(Closed Mondays)  
All Legal Beverages  
Take Out Orders  
CALL RO 7-9045

## S-L-C

PROUDLY PRESENTS  
A WEEK-END WITH  
PASHA !!

"The Turkish Goodwill  
Ambassador of Music"

★ PIANO PASHA

Also Featuring The

★ TED FAVATA  
TRIO!

Thurs., Fri. & Sat. Nites  
at the Tri-Cities  
Newest & Most Exclusive  
Supper Club

**SCANDURRA'S**

LATIN CLUB

351 New Karner Rd., Rt. 155  
COLONIE, N. Y.

— RESERVATIONS —  
CALL 869-7032



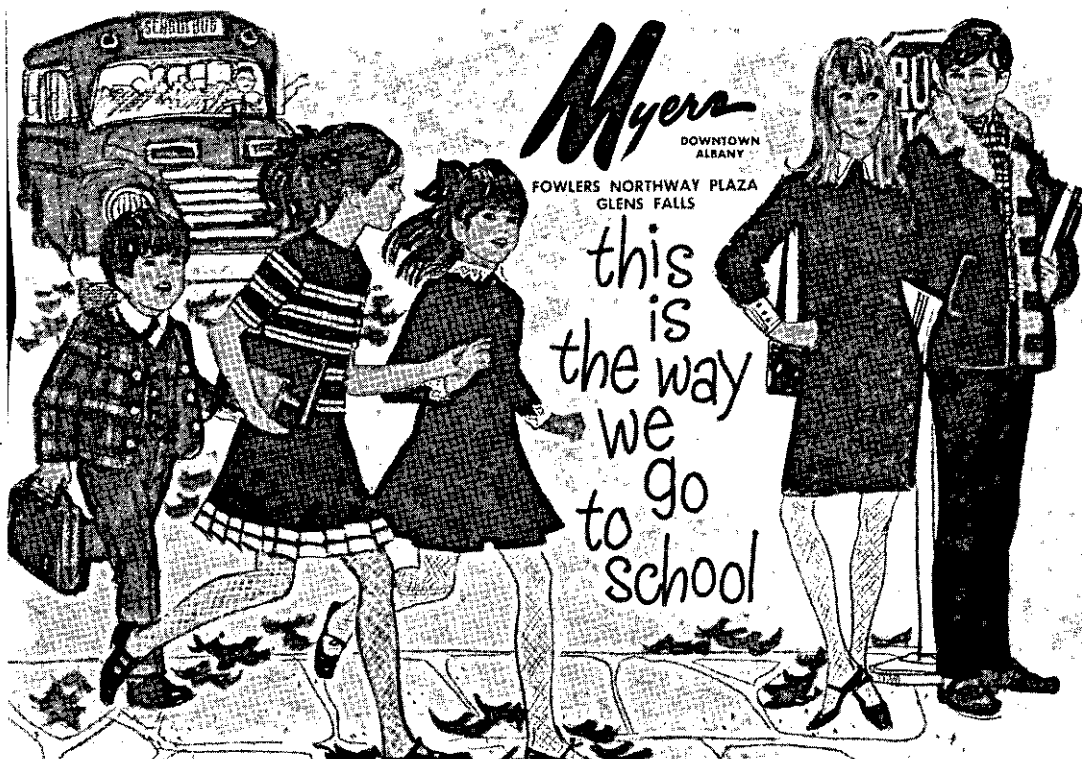
## Traditional Apparel for the Young Man

- GANT SHIRTS
- BURBERRY RAINCOATS
- CORBIN TROUSERS
- RIVETZ NECKWEAR
- ALAN PAINE SWEATERS
- JOHN ALEXANDER BLAZERS
- FREEDBERG OF BOSTON SUITS

*Stulmaker's*

8 James Street  
just off State

Member Park 'n Shop - Open Thursday Evenings 'til 9



FIRST TO

*Myers*

AND THEN BACK TO SCHOOL!

... Back to the halls of ivy, but again first to Myers where your selections and savings are the greatest. Bedspreads, blankets, towels, sheets and pillow cases ... everything, yes everything to complete your back-to-school list, and you'll save more than ever before.

Shop MYERS, Downtown Albany, for all your back-to-school needs. Order by phone (HO 5-3436) from our convenient Back-to-School Catalog you received in the mail.

STORE HOURS: Open Monday and Thursday night till 9 P.M. - all other days till 5:30 P.M.  
Open a convenient Myers CHARGE ACCOUNT TODAY!!

## At the New C. L. Summer's

**THE  
RIGHT IDEAS  
for MEN with  
YOUNG IDEAS**

Nationally Known Brands of  
Quality Apparel for MEN from  
STETSON HATS to FREEMAN SHOES

GROSHIRE Hand-Shaped Suits

Visit Our NEW Enlarged  
SWEATER & OUTERWEAR Section

**C. L. SUMMER  
& CO., INC.**

60 NORTH PEARL ST., ALBANY

Open Thursdays till 9 P.M. . . Sat. till 5:30 P.M.  
Free Park and Shop Tickets

**don't  
wait!**



**SAVINGS RECEIVED  
BEFORE  
SEPT. 10  
Earn 4½% from  
SEPT. 1**

Anticipated (providing  
satisfactory earnings continued)  
compounded and credited quarterly  
**FREE** Save-by-Mail Service.  
Postage paid on all trans-  
actions by mail.

Member  
Federal  
Savings  
&  
Loan  
Insurance  
Corporation

**PARK FREE** at Howard  
Parking Plaza, Corner  
Lodge & Howard Streets.



**The PERMANENT  
SAVINGS & LOAN ASSOC.**

**91 STATE STREET, ALBANY, N. Y.**



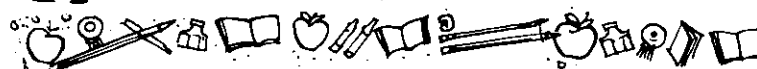
MR. & MRS. DOUGLAS MOORE of Elsmere recently celebrated their 25th Wedding Anniversary at a party given in their honor by Mr. and Mrs. James Vagel and Mr. and Mrs. Guy Smith, Jr.



If you think typing errors are a problem in your office, pity the poor "blind" typist of the early 1890's; she typed on a machine that had the keys striking on the *under-side* of the roller! A new compact electric typewriter introduced by Olivetti Underwood, the Praxis 48, features an automatic error-preventing system.



Spotlight Classifieds  
**Tell The World!!!**



**Boys**

from \$8.50  
to \$13.99

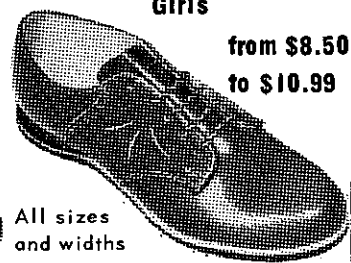


**BEST SELECTION  
OF SHOES  
FOR BOYS AND GIRLS  
IN THE  
CAPITAL DISTRICT**



**Girls**

from \$8.50  
to \$10.99



All sizes  
and widths

**WE SPECIALIZE IN PRESCRIPTION FITTING**

**SHOES FOR ALL PAROCHIAL SCHOOLS**



**Michelson's Shoes**  
"Where fit comes first"

Our  
**ONLY**  
Store

**211 Central Ave.**  
Shop 'til 9 P.M.



HE 9-4949

SPOTLIGHT CLASSIFIEDS

HE 9-4949

**CLASSIFIED AD POLICY**  
Classified Ads in the Spotlight must be paid for when the ad is submitted. We must enforce this policy strictly. Our rates are too small to permit invoicing and bookkeeping on these accounts. Please do not ask us to make any exception to this rule.

Your copy and remittance must reach us on Friday before 4:30 P.M. in order to appear in the following Thursday issue.

# CLASSIFIED ADVERTISING RATES

10¢ per word for each insertion; \$1 minimum.

CALL HE 9-4949

Write, or stop in at our convenient office:  
154 Delaware Avenue

# ALTERATIONS & SEWING

**ALTERATIONS** and sewing. M. Buess. HE 9-1270. tf  
**ALTERATIONS** and sewing. Kirk Hauser. HE 8-0014. tf

# AUTO UPHOLSTERING

**AUTO** upholstery; Antique cars a specialty. Bob's Auto Top Shop, rear 300 Delaware Avenue, Delmar. tf

# BLACKTOP

**LUZZI BROS.**, Blacktop Paving: Parking lots, driveways, garage floors, sidewalks. Free estimates. 482-3484. tf

**CAPITAL PAVING SERVICE** — Blacktop, landscaping — topsoil. Free estimates, all work guaranteed. 434-4920. tf

# SUBSCRIBE TO THE SPOTLIGHT

# PICNICKING

# THE EASY WAY

Order and Pick Up

Chicken and French Fries  
In the Basket \$1.75

OR

Chicken Little and  
French Fries 99¢  
at the

# TOLL GATE

in Slingerlands  
TEL. HE 9-9824

# BUILDING & CONTRACTING

**HOMES**, garages, remodeling, additions, "easy terms," Hogan Construction Co. IV 2-4693. tf

# BICYCLE REPAIRS

# SCHWINN • RALEIGH BICYCLES



Parts and  
Accessories  
for

All American and English Bikes  
We repair all makes  
TRADE-INS

**Bennett's**  
SPORTING GOODS  
561 Delaware Ave., Delmar, N.Y.

# CARPENTRY

**REMODELING** — All types of carpenter work. H. A. Ertel. HE 9-1048. Ed Hehre. HE 9-1198. tf  
**ADDITIONS**, remodeling, roofing, stairs, general repairs. Arthur Molle. HE 8-7185. tf

# CARPETING

**NEED CARPET?** See a Hometown representative at LATHAM Rug Co., Carl Van Hoesen. Store ST 5-8521 Home HE 9-1485. tf

# CLEANING SERVICE

**LOCHMOOR** Window Cleaning Co. Resident and office maintenance, complete. IV 9-0121 or 489-2474. tf

**HOUSE CLEANING**, window washing, floor maintenance, also any other cleaning you need. Old Holland Cleaning Service, Inc. RO 7-2739. tf

# DRIVER TRAINING

# Albany Driving Academy

67A Edgewood Ave., Albany

Beginners - Intermediates

Brush-Up

CARS AVAILABLE FOR  
ROAD TESTS

Standard & Automatic

Call HO 2-1309

**Colonial**  
**Arres**



RT. 32, GLENMONT, N.Y.

A planned community of  
early American homes.

PHONE HE 9-9231

# DOLL REPAIRING

**DOLLS** repaired, restring, costuming. Reina Deitz. HE 6-1690. tf

# FUNERAL DIRECTORS

**M. W. TEBBUTT'S SONS**  
Albany Delmar

420 Kenwood Ave.  
HE 9-2212

Serving All Faiths  
For Over 100 Years

# FURNITURE REFINISHING

**FURNITURE** repairing, refinishing, re-upholstering. French. HE 4-0633. tf

# FURRIER

**FURS** cleaned - repaired - restyled - cold storage. Francis T. McElroy, 31 1/2 Maiden Lane, Albany. 434-2619. 4t922

# HORSES BOARDED

**HORSES** boarded, experienced care, Delaware Turnpike. HE 9-2067. 4t922

# INSTRUCTIONS

**BASIC OIL PAINTING**—Every Tues. morning beginning Oct. 4 from 10-12. Studio easels provided - private studio - still life, flowers, landscapes. Limited enrollment. 10 weeks - \$25. Advance payment required to insure enrollment. Call IV 9-6173. 5t929

# LANDSCAPING

**TOP SOIL**, landscaping, lawn maintenance, tree cutting. Hummel. 439-6115, Slingerlands. 5t915

# LAWNMOWERS

**LAWNMOWERS** — SALES AND SERVICE. Hilchie's Hardware, Delaware Avenue, Delmar. HE 9-9944. tf

**IMMEDIATE** repair: Lawnmowers, tillers. Call after 5 P. M., all day Saturday. HE 9-4873. tf

**SHARPENED**, repaired. Jacobsen Sales and Service. Rotors, Reels, Riders. Time payment plan available.

**Colonial**  
**Arres**



RT. 32, GLENMONT

# GOLF COURSE

Limited Private  
Membership  
Now Available

For further information  
Call

Glenmont Development  
Corp. HE 9-9231

able. M Gudz, 138 Elm Avenue, Delmar. HE 9-2025. tf

# LIQUORS & WINES

**SLINGERLANDS PACKAGE STORE**. Complete line. Deliveries. Discount on case lots. Party consultants. Open 10 A. M. to 10 P. M. Phone HE 9-4581. tf  
**O'ROURKE'S** Liquor Store, Corner Elm Avenue & Jericho Road. Selkirk. tf

# MASON WORK

**EXPERIENCED**, all types masonry, new or repairs. Guidara. HE 9-1783 evenings. tf

**MASONRY**, experienced, all types. Call Tony Burton evenings. HE 9-2256. 5t915

# MOVERS

**D. L. MOVERS**. Local and long distance moving. Reasonable rates. No job too small or too large. Dick Leonardo. HE 9-5210. tf

**HOUSEHOLD MOVING**, low rates, new equipment, experienced personnel, free maid service. Local moving. 465-1200. tf

**REFRIGERATORS** and appliances moved by local resident, reasonable rates. 439-1140 or 439-9805. tf

# MIMEOGRAPHING SERVICE

**REASONABLE RATES** — Mimeographing - stencils cut - addressing - mailing. Delmar, N.Y. 438-3383. tf

# ORIENTAL RUGS

**NEW AND USED**, in all sizes and colors at reasonable prices. Washing and repairing by native expert. Pickup and delivery. Free estimates. Rod Kermani. Stop 3, Albany-Schenectady, Road. EX 3-6884 or IV 2-0457. tf

# PAINTING & PAPER-HANGING

**INTERIOR**, exterior painting. Free estimates. Guaranteed. Insured. Jim Vogel. HE 9-9718. tf

We are known . . .  
By our good  
Listings

**ROBERTS**  
489-3211

**INTERIOR** and exterior painting. Also carpentry work. Frank Salisbury. Days: HE 9-5527; nights: HE 9-1355. tf

**DON VOGEL**, exterior — interior painting, paperhanging, fully insured. HE 4-2853, HE 4-8370. tf

### PERMANENT WAVING

**SPECIALIZING** in Breck, Realistic, Rayette and Caryl Richards permanents; hair tinting and bleaching. **MELE'S BEAUTY SALON**, Plaza Shopping Center. HE 9-4411. tf

### PIANOS

**PIANOS** — organs. Area's largest selection. **BROWN'S PIANO** — **ORGAN MART**. 459-5230. tf

### PLAY SCHOOL

**PLAY SCHOOL** — three mornings weekly 9 A.M. to 12 noon. Children ages 3 to 5 years. HE 9-1796. 4t922

### RADIO REPAIRS

**TAPE** recorders, phonographs, radios repaired. Call 439-6215. 4t98

### SCISSORS SHARPENED

**SCISSORS SHARPENED**, 6 pairs med. size, \$2.00 also pink shears, saws, hair clippers, lawnmowers, knives. Called for and delivered HE 9-3893. tf

### SEPTIC TANK SERVICE

**NORMANSKILL** Septic Tank Cleaners. We install dry wells, septic tanks, drain fields. 787-9287. tf

**DELMAR SANITARY CLEANERS**, Serving Tri-Village area over 20 years. HE 9-1412. tf

### TREE SERVICE

**HERM'S TREE SERVICE**: trimming and removal (insured). Call Albany, IV 2-5231. tf

### WATCH REPAIRING

**EXPERT WATCH AND JEWELRY** repairs. Diamond setting, engraving wedding and engagement rings, reasonable. Your trusted jeweler, D. LeWanda, Delaware Plaza Shopping Center. HE 9-9665.

### MERCHANDISE FOR SALE

**ALUMINUM** combination windows, doors, siding, etc. Finest quality at lowest prices. Taylor Aluminum Products. RO 5-2856. tf

**ANTIQUES** bought and sold at the sign of the Coffee Mill. 67 Adams Pl., Delmar. HE 9-1021. tf

**FUEL OIL**: 2¢ per gal. cash discount. Academy Oil Service, Glenmont. 24-hour service. HO 2-1309, 465-5336. tf

**PIANOS — MASON & HAMLIN**, Knabe, Fischer, Weber and Stark, also fine selections of slightly used pianos. Call A. Andrew Gigliotti. HO 3-5223. tf

**FURNITURE**: our low cost operating policy enables us to bring you **BIG SAVINGS** on **NEW** furniture, rugs, bedding, drapes. **BURRICK FURNITURE**, 560 Delaware Ave., Albany. Just across the Thruway Bridge in Albany. tf

**STEREO** amphitheatre, 8 horns, 55 inches long, 23 inch TV, fruitwood cabinet, perfect condition, \$150. RO 5-2088. 4t915

**DOTS!** Back to School with brand name sneakers and boots at discount prices. Regular hours 10 a.m. - 5:30 P.M., Tues. thru Sat. Wed. & Fri. 7 p.m. to 9 p.m. Consignment hours 10 a.m. to 2 p.m. only - Tues. thru Fri. 241 Delaware Ave., Delmar. tf

**1963 HOMETTE** mobile home, three bedrooms, patio, ideal location. 756-9204 anytime. 2t91

**CARPETING** for sale with pad, one piece 7 x 24 and 9 x 12. 439-5383.

**GUITAR**, electric Mosrite, same as the Ventures, good buy. HE 9-5227.

**KEEP** your carpets beautiful despite constant footsteps of a busy family. Get Blue Lustre. Rent electric shampooer \$1. Adams Hardware, 380 Delaware Avenue, Delmar.

**\$2.00** for 50¢ piece, order Knapp Shoes. Perry. HE 9-1221, HE 4-7051. 3t916

**MAHOGANY** 3/4 four-poster bed with nearly new Sealy Postpedic spring and mattress; 3-piece painted sectional corner bookcase; 4 floral wool runners. HE 9-5313 after 6 p.m.

**LIGHT mahogany** 8-piece bedroom set. 434-9214.

**1964 Star Trailer**, 10x60, 3 bedrooms, very reasonable. 439-2377.

**LUMBER** for sale, all sizes. Electric table saw. HE 9-4081.

**HOMEGROWN** cucumbers for pickling, any size, picked on order. RO 7-3898.

**ZENITH** TV console, excellent condition, \$75. Call HE 9-4153 after 6 P.M.

**RIDING** mower, 5 HP, fine condition, \$95. HE 9-1676.

**TWO** maple-furnished chairs, 2 lamps and end tables. HE 9-2614.

### AUTOMOTIVE FOR SALE



Saab Authorized Dealer

### NEW SALEM GARAGE

New Salem Route 85  
DeWitt and Fred Carl  
— **NEW AND USED CARS** —  
Telephone RO 5-2702

**1961** Jeep, 4-wheel drive pickup with snowplow. Howard Gage, Altamont. 861-8521.

**1958** Cadillac Coupe Derall, no rust, reasonable. Howard Gage, Altamont. 861-8521.

**1963** Oldsmobile 2-door hardtop, nice condition. Howard Gage, Altamont. 861-8521.

**CYCLE**, Yamaha, cheap transportation, 150cc, extras, good condition, excellent buy. HE 9-5227.

**1960** Opel, complete parts for motor and body. HE 9-4637 evenings.

**1960 VOLKSWAGEN** sedan, excellent condition, reasonable. HE 9-5038. 2t98

### PETS

**FOR** expert dog grooming, call Judy. HE 6-1445. tf

**"DOG BY DONNA"**, professional grooming. Home pick-up - delivery. HE 6-1035 or HO 5-3601. 10t922

**BASSETT**, male, 6 months, AKC, all shots, potential hunter. HE 9-5227.

**POODLE** puppies, AKC registered, silver miniature. HO 5-3886.

**LOST** — white cat, gray tiger spots, rings on tail, pink toes, "Pinky," vicinity of Orchard and Delaware Turnpike. 439-3839.

SUBSCRIBE TO THE SPOTLIGHT

### WANTED TO BUY

**LOOM**, 4 or more harness, 6 or more treadle, "Jack" type preferred. Write P.O. Box 323, Slingerlands, N. Y. 3t91

### REAL ESTATE FOR SALE

**3-family house**, 383 Delaware Ave., 2-car garage. Also 1 family house, stone and brick, two fireplaces, cathedral ceiling, recreation room, 2 baths, three bedrooms, laundry room, full basement, 2-car garage, lot 100x302. Call 439-2695 or 439-6404. 4t98

**ONE** family house, Warner's Lake, Altamont Road, 7 rooms, cellar, oil heat, large water supply, large lot, low taxes, leaving town. Call 872-0566. 4t98

**CLARKSVILLE** area, year round home, 5 rooms, bath, heating system, completely remodeled, cellar, garage, \$12,500. Hallenbeck. HO 5-4838.

### REAL ESTATE FOR RENT

**OFFICES** or store space available 450 to 3,000 square feet, heated, air conditioned. Driftwood Building. HE 9-1468. tf

**BOARD & ROOM** in private home. Men preferred. Westerlo area. 872-1113. 2t91

**DELMAR** — Large 3-bedroom house, excellent location, one block from Senior High. 439-4806. tf

### WANTED TO RENT

**BUSINESS WOMAN** wants furnished apartment with parking. HE 9-9730.

### HELP WANTED

### TOY DEMONSTRATORS

Aver \$25 or more per evening

Quality Toys, Color Catalogs, No Delivering, No Collecting, Car Necessary, Bonus & Incentives

Warehouse in Albany  
Ideal Home Parties  
IV 9-4571 or 286-3126

**BABYSITTER** for two school age children weekdays 2:30 to 5. HE 9-5203.

## DEMONSTRATOR CLEARANCE

## 1966 OLDSMOBILES

22 Different Models to Choose From  
Fully Equipped

SAVE AS MUCH AS **\$1100**  
**BODNAR OLDS**

526 CENTRAL AVE. IV 2-4491



CALL . . .  
**438-8461**

A CALL WILL SHOW YOU  
WHY IT PAYS TO  
LEASE FROM . . .

**ALBANY DODGE**  
LEASING CORP.  
949 CENTRAL AVE.  
ALBANY, N.Y.



**FEMALE**, part to full time work, Monday through Friday, days. This person will work during the school year and be off during school vacations, when we will use our student help full time. Experience not required. Please apply to Mr. George at the Plaza Pharmacy, Delaware Plaza.

**STENOGRAPHER**, small insurance office, Elsmere, 37 1/2 hour week. Call for appointment. 439-4928. tf

**HOUSEKEEPER**, dependable, live in or out. For retired New Salem couple. Must have own transportation. IV 9-4764 days, IV 9-0601 after 5:30.

**CLERK TYPIST**, female, car necessary, opening September 6th; send resume to Box S, Spotlight, Delmar. 2t98

**CLEANING** woman for apartment on bus line, every other week. 439-1404.

**CLEANING** woman, one day week, own transportation. 439-5805.

**ONE** body man, one painter, excellent working conditions, steady employment year round, wages commensurate with your experience. Apply Mr. Scolnick, Nemith Traffic Circle, Latham. 2t98

**COMPANION-HOUSEKEEPER** for care of convalescent lady in private residence, must be able to drive car. HE 9-1530. tf

**TYPING**, dictaphone, bookkeeping. Medical office, part time. Own transportation. State qualifications. Reply Box "L," Spotlight, Delmar. 2t91

**"AVON CALLING"** for Christmas. Openings available in Tri-Villages. Call Mrs. Calisto, ST 5-9857. 3t98

**WAITRESS** wanted. Inquire Joe Smith, mgr., Sporthaven Lanes, 417 Kenwood Ave., Delmar. 3t98

**MECHANIC**: For Brunswick bowling machines. No experience necessary. Will teach. Inquire Joe Smith, mgr., Sporthaven Lanes, 417 Kenwood Ave., Delmar. 439-1110. 3t98

### SITUATIONS WANTED

**MAY** I help you or give your child his next party? College girl. Call HE 9-4039. 2t825

**CHILD CARE** my home, 5-day week, or by day. Tri-Village area. References. HE 9-3588. 2t91

**BABYSITTING**, my home, days. 439-5823.

**IRONING** done in my home. Johnson Road between Western and State Farm Road. IV 9-8237.

**BABYSITTING**, my home, days. 439-5813.

**OFFICE WORK** — Delmar mother, ABC graduate, experienced, school hours, own transportation. 439-4848.

**BABY** sitting in my home. HE 9-2583 2t98

### RIDE WANTED

**RIDE** wanted to State Campus. 2 riders, Building #4, 5, 7, or 8. HE 9-1118 after 5.



READ  
THE SPOTLIGHT  
WHILE ON  
VACATION

All Roads Lead To Hallmans'!

**WE'LL REACH FOR ANY DEAL!!**



**MARSH HALLMAN HAS THE LARGEST SELECTION**

of NEW  
**1966 CHEVROLETS**  
IN THE ENTIRE CAPITAL DISTRICT

**\* WE'LL MAKE THAT IMPOSSIBLE DEAL!**

\* All Ready for Immediate Delivery

\* No Payments Till Late Spring

**MARSH HALLMAN CHEVROLET, Inc.**

**781 CENTRAL IV 9-5551**

Open Daily 'Til 9 P. M. Friday-Saturday 'Til 6 P. M.

**Where More People Buy For Less!**

**for Back to School**

Get the Best!

**CONVERSE ALL STARS**



• FOOTBALL SHOES  
• SOCCER SHOES  
• CROSS COUNTRY FLATS

Many Other Back to School Sporting Goods Items at

**TAYLOR & VADNEY**

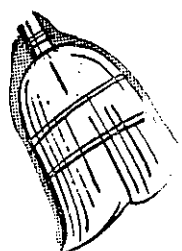
**303 CENTRAL AVE. HE 4-9183**

Open Daily — 8 A. M. to 9 P. M.

SPOTLIGHT CLASSIFIEDS TELL THE WORLD  
CALL HE 9-4949

at ALBANY DODGE... it's

**NOW --**



**CLEAN OUT TIME!**

**OVER 175 CARS**

TO CHOOSE FROM

**1966 DODGES**

**DARTS — CHARGER — POLARA**

**CORONET — MONACO**

**LOW — LOW PAYMENTS — ASK US**

**COME IN — WE WANT YOUR BUSINESS**

**ALBANY DODGE INC.**

**949 Central Ave.**

**JUST ABOVE WESTGATE**

OPEN MON. THRU THURS. 'TIL 9 P.M.; FRI. & SAT. 'TIL 6 P.M.



Open 'til 9

# 81st Anniversary SALE

QUALITY FASHIONS SINCE 1885

all sale merchandise  
from our regular stock of famous-makers

Special Groups

**MEN'S SUITS  
& SPORT COATS**  
**25% to 50% off**

Philcraft zip-lined

**MEN'S TOPCOATS**  
reg. 65.00 **49<sup>99</sup>** reg. 75.00 **59<sup>99</sup>**

2 of our famous  
brand, long sleeve  
Men's White

**BROADCLOTH SHIRTS**  
reg. 4.25 **2<sup>99</sup>** reg. 5.00 **3<sup>99</sup> or 3/10**

coat style

**MEN'S PAJAMAS**  
reg. 5.00 & 5.95 **3<sup>89</sup>**

mr. young shop

**PREP IVY BLAZERS** reg. 22.95 **16<sup>99</sup>**  
**PREP SLACKS** (continental & belt-loop) reg. 8.95 **6<sup>89</sup>**

SHOP OUR MR. YOUNG DEPT. FOR  
NEW FALL CAMPUS FASHIONS

*Dorothy Lynn*

*invites you to see our*

**1/2 PRICE RACK**  
*of tremendous values*

*Dorothy Lynn* INC.

Open Daily 9-5:30

Closed Fri. Evening during August

360 DELAWARE AVENUE

Phone HE 9-4101

**BCHS**  
**GYM SUITS**  
**and**  
**SWEAT SHIRTS**  
**CONVERSE SNEAKERS**



PHONE

HE 9-4851

278 Delaware Ave., Delmar

Permit No. 10  
**PAID**  
Bulk Rate  
U. S. POSTAGE

