

# The Spotlight

VOL. IX, NO. 39

SEPTEMBER 29, 1966

\$1.00 PER YEAR

10¢ A COPY



**EVERYBODY'S GOING** — Mrs. Walter Taylor, Miss Jean Sturtevant, Mrs. Robert Proctor and William Brayden discuss an antique lamp and a hand sewn quilt to be auctioned at the Annual Bazaar of the Voorheesville Methodist Church on Saturday, October 1. Booths open at 10:00 a.m.; the auction begins at 12:00 Noon; a family style roast beef supper will be served from 4:00 to 7:00 p.m.



**KIWANIS BLOCK OF DIMES AWARDS** — Each year, the Delmar Kiwanis Club has its Block of Dimes campaign to solicit funds for the youngsters in the Town of Bethlehem. All of the money raised is used to benefit them. Pictured above are the recipients of this year's awards. Left to right: Arthur L. Fleahman, Jr., President; Francis Dillenback, Chairman of the Scholarship Committee; Sandra Dryden, who will attend Cobleskill Agricultural & Technical School; James Denham, who will attend Dean Junior College; Barbara Canizzaro, who will attend College of Mount St. Vincent; Gordon Morris, Treasurer; Ted Collins, 1st Vice President; and missing from the picture Carol Cannizzaro, who will attend the University of Buffalo. The Delmar Kiwanis Club and the students wish to thank all residents and businessmen who contributed to the Block of Dimes and made these awards possible. Without their cooperation, the program of the Kiwanis Scholarship Foundation could not be a success.



**AN AIRPLANE ON THE CARPET** is odd enough. But, how did they get it through a doorway only seven feet wide? At Jamaica Inn on the Troy-Schenectady Road they solved the problem by taking off the wing and tail assembly first. Then it took four men eight hours to have this Cessna Skyhawk sitting pretty. All the preparations were for 100 aircraft dealers from New York and New England who met at Jamaica Inn for a sales conference Thursday. Walt Glass (above) of Schenectady, owns the plane. He said that it's usually a problem of "how and where" to display aircraft "inside." He added that all attending were on time for the meeting — they flew their own planes to the Capitol District!

## Ambassador Will Speak

A peek into a modern Polish apartment and a first-hand look at the impact of the Berlin Wall are just two of the many experiences awaiting audiences of Tim Thornton, Bethlehem Community Ambassador for 1966.

After spending the summer living with a Polish family in Krakow, and visiting other parts of Poland and Germany, Tim now has a pretty fair idea of what is fact and what is fiction in what we hear about life under communism.

He knows the nervous feeling of being stopped at night by security police for a check of identification papers, which everyone in a communist state must carry. He has seen the changes brought to Poland by a communist regime and discovered the extent to which the Poles accept these changes. He understands the immensity of the crime at Dachau after visiting there with his Polish friends and seeing it through the eyes of those who have lost loved ones.

These and many other experiences are part of the story Tim will report to the community in his forthcoming year of slide lectures. He will be the featured speaker tonight at 8 P.M. in the dining room of the Bethlehem Senior High School at a meeting of the Bethlehem Community Ambassador Program.

## Elks Events

Mrs. Albert Danckert, Chairman of Ways and Means Committee of the Auxiliary of Bethlehem Lodge of Elks #2233, announces that a Round and Square Dance will be held at the Lodge in Cedar Hill Saturday, October 1.

Sport Fashions from Suburban

## Let's Go To Voorheesville

Workers are putting the finishing touches on arrangements for the Voorheesville Methodist Church Auction-Bazaar on Saturday, October 1.

Chairmen are making final preparations for stocking the booths with home baked goods, candy, produce, plants, gifts, white elephants, toys and used clothing, books and numerous other items.

Those in charge of the auction are busy picking up last-minute donations of antiques and household goods to go with the large number of items already on hand. James Dunn will be the auctioneer.

The cooks are working out final details for peeling vegetables and preparing the meat for the popular family style roast beef supper.

Others are arranging a place for the pony rides, laying out the route for the horse drawn stage coach rides, getting prizes for the fish pond, working on games for the children, or erecting a stand for the band.

The best way to display several hobbies is the problem of another committee. This display will feature guns, pistols, ceramics, gardening, decorative tiles and crocheting.

Booths will open at 10:00 a.m.; the auction starts at 12:00 Noon; and supper will be served from 4:00 p.m. to 7 p.m. Refreshments will be available all day.

Arrangements have been made to carry out the activities regardless of the weather.

Gal in Elsmere and Wig Fashions by Ivan of London in Albany will be presented at the Fall Fashion Show sponsored by the Auxiliary at the Lodge October 9. Refreshments will be served.

**SUPERB QUALITY**

**PRO**  
HARDWARE STORES

**GREAT VALUE**

**FALL ANNIVERSARY SALE**

**LIFE**

**FALCO**

**OUTDOOR SIZE DISAPPEARING CLOTHES LINE**

USE INDOORS—OUTDOORS  
150 FEET OF DRYING SPACE

Line automatically rolls back into container when not in use.

**SPECIAL 14<sup>88</sup> SAVE \$5.00**

**LIFE**

*Beacon* **FULLY AUTOMATIC ELECTRIC BLANKET**

*Special Save 33%* **9<sup>88</sup>** 72"x84"

Eight comfort settings; 80% rayon, 20% cotton; machine washable. Attractive pastel colors. UL approved.

"DOUBLE BED SIZE"

**FULLY AUTOMATIC ELECTRIC HEATER**

*Special Save 33%* **9<sup>99</sup>**

Fan forced instant heat. Fully automatic thermostat control; safety shut off if heater is turned over; tamper proof grille, UL approved.

**LOOK**

**CHURCH** **FAMOUS NATIONAL BRAND TOILET SEAT**

REG. \$4.95

*Sale priced* **3<sup>88</sup>**

Baked-on finish cannot crack, chip or peel. Plastic coated metal hinges. White only.

**PRO**

**DELMAR LUMBER & BUILDERS SUPPLY inc**

**340 DELAWARE Ave • Phone HE.9-9968**

## Card Party

The first of the Fall and Winter series of card parties sponsored by Clarksville Grange will be held tonight (September 29) at 8:00 P.M. at the Grange Hall, Delaware Tpk., Clarksville. Other games are provided for those not wishing to play cards. Admission includes door prizes and refreshments.

## Bus Trip

October 7 is the deadline for making reservations for the fall foliage bus trip to Old Sturbridge Village on Saturday, October 15. This trip, sponsored by the Ladies' Auxiliary of the Elsmere Fire Company, will leave the Elsmere Fire Hall at 7:25 a.m. and leave Sturbridge to return by 7 p.m.

From 10 a.m. to 5 p.m. you can leisurely explore any or all of the 200 acres that have been recreated into a typical village of the early 1800's. The exhibits will be of interest to all ages. Children, as well as adults, will be fascinated by the demonstrations at the Pewter Shop, the Tin and Broom Shop and the Grist Mill. Everyone enjoys the Folk Singer on the Green.

After a full day all will be ready for a fine dinner, and arrangements have been made for eating at a nearby restaurant.

Reservations are on a "first come - first served" basis and must be paid for in advance of the trip. There is room for just a few more so if you don't want to be disappointed we suggest you call either HE 9-4572 (Mrs. Blodgett) or HE 9-5321 (Mrs. Rukwid) today.

## Fall Opening

Dr. Herbert S. Mekeel announced the Fall opening of the Albany Bible Institute, 281 State Street, Albany. Bible classes begin October 3, 4 and 6 at 6:45 P.M. A series of 5 studies from Isaiah will be given each Monday by Rev. James R. King, of Bayshore, L.I., at 7:30 P.M. October 3-13. The public is invited to any or all classes.

Dr. Mekeel is President of



**Dr. Herbert Mekeel**  
Albany Bible Institute and Camp Pinnacle.

## Ski Club

The beginning of activities for the second year of the Whiz Ski Club will take place at St. Stephen's Church with a general meeting on Friday, October 7, at 8:00 P.M. All meetings thereafter will be scheduled on the first Friday of each month at the church for the 1966-1967 season.

Prospective members may obtain applications at the general meetings or at Bennett's Sporting Goods or Gallagher's Ski and Sport Shop.

The Ski Club is founded on the basis of family recreational skiing. The Club offers free ski instruction, beginner through advanced, on the learners slopes at the various weekly planned trips to ski resorts within a sixty-mile radius.

The first planned activity for the Club's fall season will be pre-season physical conditioning classes followed by swimming for the members at the Bethlehem Junior High School Wednesday evenings, starting October 5 from 7:30 til 9:00.

## Swim Program

The Albany Area Chapter, American Red Cross's fall Water Safety and Life Saving program will get under way early in October, with the first program opening on Wednesday evening at the Bethlehem Central Junior

High School where girls will swim from 7:00 until 8:00 p.m. according to announcement from Carl Gardner, Chairman of Water Safety.

The program will run from October 5 through June 14. Enrollment will be completed on the opening night.

In this program, all phases of the Girl Scout program will be covered and, in addition, Beginning Swimming and Stroke Improvement will be taught by qualified American Red Cross Water Safety Instructors under the direction of James H. Carnahan, Director of Health and Safety of the Albany Area Chapter, American Red Cross.

During the same week, the program for boys will get under way at the Bethlehem Junior High School on Friday evening, October 7, with progressive swimming being taught from 7:00 o'clock until 8 o'clock and Life Saving from 7:00 until 9:00 P.M. In this program, all phases of the Boy Scout program will be covered from First Class swimming through Boy Scout Life-guard work. Enrollment in this program may be done with registration on Friday evening, October 7. Boys and girls who have completed the third grade are eligible to enroll in these swimming programs.

## Life Saving

On Tuesday evening, October 18, the Albany Area Chapter's Annual Fall Junior and Senior Life Saving courses will open at the Bethlehem Central Senior High School in Delmar. The courses will be supervised by Eileen Floser, 140 South Hawk Street, Albany, and John Osterhout, 84 Maple Avenue, Voorheesville. The Life Saving Courses will be for boys and girls from 12 years of age up who are good swimmers. They will be held from 7:00 until 9:00 P.M. and registration will be completed on the opening night according to an announcement from Carl Gardner, Chairman of Water Safety for the Albany Area Chapter of American Red Cross.

Registration of these Life Saving courses may be made by calling James H. Carnahan,

Director of Health and Safety, of the Albany Area Chapter, American Red Cross - phone 465-7301. No charge will be made for any of these courses which are a service of the Water Safety Department of the Albany Area Chapter, but there is the required textbook at a cost of 75¢.

## Letters Sent

Entering its second year of existence under the chairmanship of Alexander Woehrle, the Committee That Cares in the Town of Bethlehem has sent a letter to the two-score organizations of the Town inviting them to join with the present Committee members.

While the number of Armed Forces personnel on the Committee's list for which they are acting remains at approximately fifteen, the names continuously change.

The letters are being addressed and mailed by Mrs. John C. Haberer of the Delmar Progress Club and Mrs. Curtis C. Clark of the Elsmere Fire Auxiliary. The stationery was contributed by Caslon Press in Delmar, owned by Harry A. Offricht; zeroxing of the letter by Raymond E. Scofield, Delmar, proprietor of W. L. Coughtry Company in Albany.

## 2 Meetings

The Women's Society of Christian Service of the First Methodist Church of Delmar will meet in Fellowship Hall on Thursday, October 6, at 12:30 p.m. for lunch and program entitled "The Globetrotters Return" by Mrs. Robert B. Thomas and "Views from points East & West" by Mrs. George Briginshaw.

The Sewing Group will meet at 10:00 A.M. in the Ladies' Lounge.

## Barbeque

On Saturday afternoon, October 8, the men of the New Scotland Kiwanis Club will roll up their sleeves to prepare and serve their special Barbecue Dinner for which they are becoming more and more widely known.

Each year the number of din-

# FALL SALE!

SAVE ON THESE THIS WEEKEND ONLY!



SAVE

33 1/3%

**BUY 2 —  
GET ONE  
FREE**

## IMPORTED DUTCH BULBS

Guaranteed Top Size  
and Quality!

- TULIP
- DAFFODILS
- HYACINTHS
- CROCUS
- and Many  
UNUSUAL  
BULBS

Route 32  
Glenmont  
439-1836

**Garden Shoppe**

HOURS:  
Mon. thru  
Thurs: 8-6  
Fri: 8-8  
Sun: 10-5

## PERSONALIZED CHRISTMAS CARDS



**10%**



**DISCOUNT**

(Until October 15)

SHOP NOW FOR THIS SAVINGS!

**HARRY L. BROWN** *Jeweler*

**Thistle Gift Shop**

363 DELAWARE AVENUE AT 4 CORNERS, DELMAR

## BACK AGAIN . . .

### Our Saturday



RESERVE EARLY 'FATS' JOHNSON AT THE PIANO

We can accommodate up to 200 persons for Weddings -  
Banquets - Bowling Parties - Business Meetings  
Private Parties, etc.

## Ambassador Restaurant

27 Elk Street, Albany - Opposite State Capital

5 pc. ROCK MAPLE

### Dinette Set \$109.50

36x36x48 Round Table, 4 Farm House Chairs

6 pc. ROCK MAPLE

### Bedroom Set \$375.95

Double or Twin Bed; Double Dresser and Mirror; Chest;  
Nationally advertised Mattress and Box Spring.

7 pc. ROCK MAPLE

### Dining Room Set \$199.50

36x56x76 oval Table; 4 Governor Carver Side Chairs;  
2 Governor Carver Armchairs; Rock Maple.

3 pc. ROCK MAPLE

### Living Room Set \$139.95

Sofabed, Platform Rocker, Armchair.

2 pc. OVERSTUFFED

### Living Room Set \$156.95

If you want a Mattress and Box Springs, check us first  
for our low factory salesroom prices.

Visit our salesroom and see our complete line

## HAWLEY COMPANY

### Furniture Manufacturers

Maple Street

East Arlington, Vermont

Tel. 375-6675

ners served increases as word travels that these men are really specialists in preparing and serving the finest barbecued chicken dinner in the area.

The menu this year is as follows: Tomato Juice Cocktail, Fresh Garden Salad, One-half Barbecued Chicken (New Scotland Kiwanis Style), Golden Buttered Sweet Corn, Roast Potato (Our Speciality), Rolls, Butter, Homemade Pie, Coffee or Milk.

## New Honor

Dr. Richard P. Propp of 13 Salisbury Road, Delmar, has been appointed Research Fellow in Medicine at the Harvard Medical School and its associated teaching hospitals.

Dr. Propp received the B.S. degree from Union College in 1956 and the M.D. degree in 1960 from the Albany Medical College of Union in Albany.

He is affiliated with the Peter Bent Brigham Hospital.

## New Officers

At the first meeting of the new season, held at the Legion Post rooms by Nathaniel Adams Blanchard American Legion Auxiliary Unit 1040, the following slate of officers for the year 1966-67 was elected and installed by Mrs. Herbert E. Hafley, a Past President of the Unit and Past Department President: President, Mrs. Edward Costigan; First Vice President, Mrs. Roger Reynolds; Second Vice President, Mrs. John Flanigan; Secretary, Mrs. William Campbell; Corresponding Secretary, Mrs. William Drury; Treasurer, Mrs. Edwin Tymann; Chaplain, Mrs. Harold Barkhuff; Historian, Mrs. William McGoey; Sergeant at Arms, Mrs. George Kirk.

Together with the new officers, the following members were elected to the Executive Committee: For 3 years, Mesdames William McCredie, Harold Barkhuff and Otto deHeus; 2 years, Mrs. William McGoey, Esther Cooke and Mary Connor; 1 year, Mesdames Arthur Quinn, Herbert Hafley, Richard Dalton, and Viola Knapp.

Elected to the County Committee were: Mesdames Edward Costigan, Roger Reynolds, John Flanigan, William Drury, Herbert Hafley and Mary Connor.

Meetings will be held on the third Tuesday of each month in the Legion Post rooms, starting promptly at 8:00 P.M.

## New Display

Enchanting dolls and animals from storyland are now on display in the children's room at the Delmar Public Library. These delightful toys were made and dressed by a committee of the Unitarian Universalist Women's Federation of the First Unitarian Church of Albany under the direction of Mrs. Richard Patrick and Mrs. Richard W. Moomaw. The toys represent characters from the books "Alice in Wonderland" and "Little Women."

They will be available on November 5 for purchase at the Arts and Crafts sale at the First Unitarian Church, Albany.

## Work Begins At Selkirk

When the president of the New York Central Railroad laid the first piece of track for the expanded freight yard at Selkirk, an important step in a program announced four years ago was taken.

Four years and two months ago, the railroad promised a new multi-million electronic freight yard at Selkirk if its merger plans with the Pennsylvania Railroad were approved by the Interstate Commerce Commission. The \$19.7 million classification yard is part of a \$70 million capital expansion program that includes four other installations.

Even as construction moved quickly to beat a winter cut-off date, a federal court, has issued an order restraining the two rail giants from proceeding with their merger, which had been slated for October 1. The court said it would study applications from nine other railroads who want a temporary injunction against the merger until their protests

can be resolved by the ICC.

The yard is to be named for the road's president, Alfred E. Perlman. A completion date of the spring of 1968 is the target.

When completed the new facility will triple the present size of the yard, to make it the major facility in the state for handling east-west traffic on the Central.

The railroad has tied this expansion to the recent repeal of the state's "full-crew" law, signed into law by Governor Rockefeller in June.

Presently, the yard handles 50 freight trains a day. The electronic classification yard will eliminate much of the intermediate shuffling of trains as they are sorted, said Wayne R. Maddock, resident engineer, in an interview this week.

The yard also will replace facilities for cars and locomotives currently located in West Albany and DeWitt.

The precise impact on employment can't be ascertained immediately from the company, although it is expected that the new repair shops will require additional men. However, it is also likely that the use of electronic equipment will make possible a smaller work force eventually. A spokesman for the railroad said "no estimate . . . is yet available."

"One man will be able to punch a button," Mr. Maddock said, "after computation of all the factors - such as wind velocity, weight and weather - so that the cars will roll over the "hump" and into the right classification track."

Almost 175 miles of new double track will be laid for the expanded facility, said Mr. Maddock.

The system will permit all trains coming out of the yard to go out as "one group," he added, meaning headed for one destination. Now trains go out with several groups, a less efficient method according to Mr. Maddock.

On a recent visit, the area to the south of the present yard lay empty, denuded of all its trees and shrubbery, along a stretch nearly a mile long and 500 feet wide.

Giant electric-diggers which cost \$250,000 each, shoveled the thick red clay into the wide maws of three "pans." The pans commuted back and forth, picking up the dirt in one area and laying it down as fill in another area, in endless noisy runs.

Other smaller diggers were at work too, backed up by bulldozers.

After the entire area is fully graded, sub-ballast and then ballast will be laid down, until the land is ready for track. Fully 175 miles of new double track will be laid for the expanded yard, which is expected to be in full operation by the spring of 1968.

## Meeting

The Garden Group of the Delmar Progress Club will begin the fall season with a workshop program, "Fundamentals of Flower Arrangements," Tuesday, October 4, at 10 a.m. in the Delmar Public Library.

Members should bring a sandwich as well as flower containers and tools for making arrangements. In addition they are asked to bring at least one extra flower container for inclusion in a White elephant table for group exchange.

The committee planning the program includes Mrs. Reuben Warrell and Mrs. Sidney Funk assisted by Mrs. Frederick Baker.

## Hat Show

A Fall Hat Show will be the feature of the October 4 meeting of the Delmar Evening Unit of the Albany County Extension Service at 8 o'clock in the Bethlehem Central High School.

Hats in the show, put on by Whitney's Department Store, will be modeled by the Mesdames Leonard Angerame, Joseph Parser, Joshep Powers, Ernest Reeder, Julius Preska, and Joseph Phillips, members of the unit.

Mrs. G. Perry Dunn, hostess chairman, is in charge of the social hour following show. Guests and anyone interested in joining the unit, are invited.

## Church Services

October is "Loyalty Month"  
at Our Church

Oct. 2 - Loyalty Communion Sunday  
Oct. 9 - Loyalty Youth Sunday  
Oct. 16 - Loyalty Family Sunday  
Oct. 23 - Loyalty Guest Sunday  
Oct. 30 - Loyalty Reformation Sun.  
Services at 9:30 and 11:00 A.M.  
Sunday School at 9:30 A.M.  
Teen-Age Bible Study at 9:30 A.M.

## Coming Event

### Fall Festival & Fair

October 21 - Friday - 2 to 7:30 P.M.  
SMORGASBORD SUPPER - BOOTHS  
Adults \$1.50 Children \$1.00  
Call 439-3947 - 439-6217 - 767-3454

Church: 85 Elm Avenue, Delmar

Paul H. Gassmann, Pastor

## SHOW 'N' TELL RECORD SALE



REGULAR PRICE: 99¢

**SALE PRICE**  
**5 for \$3.79**

Over 20% Savings

3 ONLY

**SHOW 'N' TELL**  
PICTURE-SOUND RECORD PLAYERS  
(At Reduced Prices)

**the Carriage Stop**

ANOTHER  
MAIN-CARE SERVICE

339 Delaware Avenue - 439-2430 -

Hours: 9-5 Mon-Fri - Sat: 9-12 - Any evening or Sat. afternoon by appointment



Delmar

**NO FISHING!**  
go to  
**HOWARD JOHNSON'S**  
**Fish Fry**  
ALL YOU CAN EAT

- Fried to a crisp golden brown
- French Fried Potatoes/Cole Slaw
- Tartare Sauce/Rolls and Butter

**\$1.19**

**EVERY WED. & FRI. NIGHT**

*At Your Neighborhood*  
**HOWARD JOHNSON'S**

**Myers**  
DOWNTOWN  
ALBANY

(A Fine Store Since 1870)

**EVERYTHING  
FOR THE  
HOME &  
FAMILY**

**SHOP BY MAIL OR  
PHONE — HO 5-3436**



### 3 Candidates

Seen mapping their strategy for the coming Fall election campaign are three of the Albany County Democratic candidates. On the right Richard J. Connors, President of the Albany Common Council and candidate for the 29th Congressional District to succeed veteran Congressman Leo W. O'Brien shows some of his plans to Augustus H. Mattick Jr., candidate for Superintendent of Highways for the Town of Bethlehem and Robert P. Connolly candidate for Town Councilman on the Democratic slate for the Town of Bethlehem.

Mr. Connors, a veteran of the

Army Signal Corps during the Second World War served in the South Pacific as a cryptographer. He is very active in American Legion affairs and resides in Albany with his family consisting of his wife and four children.

Mr. Mattick is a resident of Selkirk, New York where he resides with his wife the former Sondra Hawkins and their two children. He is a graduate of Christian Brothers Academy, Albany and is employed by Armour & Co.

Mr. Connolly operates his own insurance agency in Albany and is a resident of North Bethlehem. He is a graduate of Siena College and besides his wife, the former Virginia Kelly, resides with his five daughters.

### Proposed Sewage System

A plan recommending the construction of a \$7,945,000 sewage collection and treatment system would "provide adequate collection capacity to meet the ultimate requirements of the Town of Bethlehem."

This is what town officials were told at an informal session recently as most of them got their first close look at the plan prepared by J. Kenneth Fraser Associates, consulting engineers under contract to Malcolm Pirnie.

The plan recommends abandonment of the present primary

treatment plant serving the Delmar-Elsmere Sewer District, construction of a secondary treatment plant on the Hudson River, and formation of a new sewer district encompassing Karlsfeld, Hurstville, Slingerlands, Hamagrael, Bethlehem Center and Glenmont.

Of the total cost of the project \$4,392,000 would be eligible for 60 per cent state and federal aid. With the outside aid, the cost to the district would be \$5,310,000.

This would mean a first-year cost of \$39.40 per \$1,000 in assessed valuation on homes in the new district, and a charge of \$4.95 per \$1,000 within the Delmar-Elsmere District.



GRAND UNION  
Celebrating 94  
years of  
experience

# We think young

We think young  
Have to! Especially when there's a whole  
new generation of young moderns to  
keep us on our toes. Homemakers like  
You! Growing, on-the-go families like  
yours! The lively crowd who expects their  
neighborhood market to be in on all that's  
new. New-fangled products to a host of special  
services. All yours to take for granted  
at Grand Union. Think young? That's exactly  
what we've been doing for nearly a century!



Fresh  
GRAND UNION  
**ORANGE  
JUICE**  
qt.  
ctn. **19¢**

GRAND UNION-2 PLY  
**FACIAL  
TISSUE**  
6 pks. of 200 **\$1.00** ALL COLORS

GRAND UNION  
**FRUIT  
COCKTAIL**  
1-lb. cans **4 79¢**  
Plus Stamps

CUT FROM YOUNG TENDER PORKERS

**PORK  
LOINS**

RIB PORTION **45¢**  
lb

RIB HALF **55¢**  
lb

WHOLE LOIN **59¢**  
lb

LOIN HALF **65¢**  
lb

GRAND UNION  
**LIQUID  
DETERGENT**  
1-qt. plastic btl. **2 89¢** PINK OR CLEAR

GRAND UNION  
**TABLE  
NAPKINS**  
pkg. of 250 **25¢** WHITE OR COLORED

GRAND UNION FRENCH  
**GREEN  
BEANS**  
1-lb. cans **4 59¢**  
Plus Stamps

U.S.D.A. CHOICE  
**7" CUT RIB  
ROAST**  
lb **69¢**

CALIFORNIA FLAMING RED SWEET  
**Tokay Grapes**  
2 lbs. **29¢**

FRESH CALIFORNIA TENDER **BROCCOLI** LGE. BCH. **29¢**  
FIRST OF THE SEASON

FRESH LOCAL GROWN **CAULIFLOWER** SNOW WHITE HD. **29¢**

U.S.D.A. CHOICE  
BONELESS  
**CROSS RIB  
ROAST**  
lb **99¢**

SPECIAL INTRODUCTORY OFFER  
**AMERICAN  
HERITAGE**  
HISTORY OF THE U.S.  
VOL. NO. 1 ONLY **49¢** VOL. 2 thru 16 **99¢**  
WITH COUPONS YOU RECEIVED IN THE MAIL

SAVE 15<sup>00</sup> on WEST BEND  
**TEFLON** Coated  
NO STICK! NO SCOUR! HEAVY DUTY ALUMINUM  
**COOK & BAKEWARE**  
WITH COUPONS YOU RECEIVED IN THE MAIL

Woman's Day  
*Encyclopedia of Cookery*  
VOL. NO. 1 **89¢**  
All others \$1.49 each.

WE RESERVE THE RIGHT TO LIMIT QUANTITIES  
PRICES AND OFFERS EFFECTIVE THURS., FRI., SAT., SEPT. 29, 30, OCT. 1  
WE ARE NOT RESPONSIBLE FOR TYPOGRAPHICAL ERRORS



# Freikofer's

**BATTER WHIPPED SUNBEAM BREAD**  
NO HOLES! NO STREAKS!

PHONE **HO 3-2221**

**FOR DAILY HOME DELIVERY ...**  
**OF DELICIOUS BREAD, ROLLS, CAKE**

## FEATURES OF THE WEEK

<b>POTATO CHIPS</b> .....	<b>79c</b>
<b>BROWNIES</b> 10c Each.....	<b>Box of 12 \$1.20</b>
<b>CINNAMON CRUMB BUNS</b> .....	<b>44c</b>
Every Thursday	

### THURSDAY

Sept. 29

- ☐ CALIFORNIA RING .....79c
- ☐ Strawberry-Rhubarb Pie .....79c
- ☐ Glazed Donuts .....44c
- ☐ Bobka .....59c
- ☐ Orange Sheet Cake .....59c
- ☐ Cinnamon Raisin Bread .....39c
- ☐ ●King Size (in the bag).....33c

Fill the Cookie Jar  
Every Thursday

**Brownies . . . . 79c**

### FRIDAY

Sept. 30

- ☐ RASPBERRY PIE .....79c
- ☐ Jelly Donuts .....44c
- ☐ Family Coffee Cake.....98c
- ☐ Blueberry Toasties .....44c
- ☐ Party Cups .....69c
- ☐ Bronx Rye .....33c
- ☐ ●Sunbeam Bread .....28c

Fill the Cookie Jar  
Every Friday

**OATMEAL COOKIES ..... 39c**

### SATURDAY

Oct. 1

- ☐ CHOCOLATE COCONUT LAYER .....89c
- ☐ Lemon Pie .....79c
- ☐ ●Old Fashioned Donuts .....39c
- ☐ Marble Sheet Cake .....59c
- ☐ Strawberry Chiffon Cake .....49c
- ☐ Bavarian Pumpernickel .....33c
- ☐ ●Thin Sliced Square Loaf.....28c

Fill the Cookie Jar  
Every Saturday

**FRUIT COOKIES ..... 39c**

### MONDAY

Oct. 3

- ☐ PEACH PIE .....79c
- ☐ ●Dozen Assorted Donuts .....65c
- ☐ Chocolate Sheet Cakes .....59c
- ☐ Cinnamon Curl Buns .....39c
- ☐ Pound Cake .....39c
- ☐ Salt Free Bread .....33c
- ☐ ●Raisin Bread .....38c
- ☐ ●Sandwich Loaf .....39c

Every Monday  
Fill the Cookie Jar

**CHOCOLATE CHIPS ..... 59c**

### TUESDAY

Oct. 4

- ☐ LOUISIANA RING .....79c
- ☐ Blackberry Pie .....79c
- ☐ Cinnamon Buns .....44c
- ☐ Banana Sheet Cake .....59c
- ☐ Pecan Loaf .....69c
- ☐ Salted Rye .....33c
- ☐ ●Sliced Italian .....29c

Every Tuesday  
Fill the Cookie Jar

**Hermits . . . . 39c**

● Indicates items available every day. The above is not a complete list of available items. For further information ask your Routeman or call the Bakery.

# Freikofer's

**QUALITY BAKING**  
**IS OUR TRADITION**

John Burnstead of the State Health Department, who attended the meeting, reported that construction costs are rising at a rate of 5 per cent a year, and said, "The longer people wait, the harder they're going to get hit. This is the crucial point. The construction industry is strained."

Engineer Kenneth Fraser, noting that the state is ordering completion by September 1, 1970, said "There isn't a great deal of time. This thing must be progressed and progressed rapidly."

Supervisor Bertram E. Kohinke's lone question was, "When can we get going?"

James Fraser replied, "To meet this schedule, you'll virtually have to start design by early next year."

Merwyn Atwood, executive secretary of the Delmar-Elsmere District, expressed one of the fears most prevalent among those at the meeting when he said, "It is easy to make plans, but what happens if the homeowners don't want it."

The answer, according to Thomas Quinn of the Albany County Health Department, is that the situation then becomes the individual homeowners responsibility.

The Delmar-Elsmere District, along with Slingerlands and Selkirk, have been cited for pollution and ordered to correct the situation by 1970.

To handle Selkirk's problem, the engineers recommended the construction of a pumping station and the installation of a connection to the proposed system. Depending on how large a portion of Selkirk would be serviced, the cost would be from \$94,980 to \$191,880 with state and federal aid.

Operation, maintenance, and debt service costs for the proposed project would be \$476,200 a year with aid grants.

Alternatives to the recommended plan would be construc-



L-I-G-H-T-W-E-I-G-H-T  
**WHEELCHAIRS**  
by Everest & Jennings  
ONLY 26 POUNDS!  
Albany Surgical Co.  
HE 4-5716





# our managers and clerks have taken over!

This is a special week.

We call it Managers and Clerks Week.

They've taken over the store.

They've planned a terrific thrift event.

Storewide values that you'll recognize as

"first-aid" for your ailing budget.

Why this special week?

First, to express special appreciation to you.

Second, to honor our managers and clerks.

Third, to give us a chance to prove "We Care".

If you're a regular A&P customer, this week is for you.

If you've never shopped A&P, this is the week to test-shop A&P.

When you see the savings on your total food bill,  
when you experience the warmth of being cared about,  
we think you'll come back time and time again. Millions do.

COPYRIGHT 1966 THE GREAT ATLANTIC & PACIFIC TEA CO., INC.

**THRIVETTES  
DOG  
FOOD**

**25** lb. bag **\$1.99**

Pick-of-the-Crop Produce!

FLAME RED

**Tokay Grapes**

**13¢**

NONE PRICED HIGHER

Fancy Grade 2 1/4 in. Min.

**MACINTOSH** 3 lbs. **39¢**

U. S. No. 1 Russet Baking

**POTATOES** 10 lbs. **79¢**

California wonder

**GREEN PEPPER** 5 for **29¢**

Firm Ripe Cello-Pkg.

**TOMATOES** pkg. **29¢**

**SWEET  
POTATOES** 2 lbs. **25¢**

You Don't Pay for Excess Trim!

SUPER-RIGHT **BONELESS** Top or Bottom

**ROUND ROAST**

**89¢**

SUPER-RIGHT  
QUARTER LOIN

**Pork Chops**

9 to 11  
chops in  
package

**79¢**

OUTSTANDING VALUE

NONE  
PRICED  
HIGHER

Super-Right Top

**SIRLOIN ROAST**

lb. **99¢**

Super-Right  
**GROUND ROUND**

lb. **89¢**

"SUPER-RIGHT" 14 to 18 POUND SHORT SHANK COOKED

**SMOKED HAM**

SHANK  
PORTION

**39¢**

BUTT  
PORTION

**49¢**

NONE PRICED HIGHER

Fancy

**SEA SCALLOPS**

lb. **79¢**

Super-Right

**MEAT LOAF**

Beef  
Pork  
Veal

lb. **69¢**

Super-Right Sliced

**BEEF LIVER**

lb. **47¢**

U.S.D.A. Inspected

**CHICKEN**

Quarters

Breast or Leg

lb. **39¢**

TRAY BACK FANCY

**FOWL**

U.S.D.A. Inspected

3 to 4 lbs. in pkg.

lb. **39¢**

Good Buys on Fine Groceries!

**A&P COFFEE SALE!**

SAVE 20¢ ON A 3 LB. BAG - SAVE 6¢ ON A 1 LB. BAG

MILD & MELLOW

**Eight O'Clock**

3 lb. bag 1 lb. bag **\$1.79** **63¢**

RICH & FULL BODIED

**Red Circle**

3 lb. bag 1 lb. bag **\$1.99** **69¢**

VIGOROUS & WINEY

**Bokar**

3 lb. bag 1 lb. bag **\$2.05** **71¢**

**WALNUT MEATS**

EXCEL

1 lb. pkg. **99¢**

**KING CRAB MEAT**

GEISHA

3 1/4 oz. can **69¢**

**DAILY VITAMINS**

A&P BRAND

Bot. of 100

for **89¢**

LADIES

**Vinyl Jackets**

Sizes  
10-18  
Fully Lined

**\$3.99**

A TERRIFIC VALUE!

Ann Page Creamy or Crunchy

**PEANUT BUTTER** 12 oz. jar **39¢**

A&P Brand Antiseptic

**MOUTH WASH**

14 oz. bot. **49¢**

Ann Page Really Fine

**MAYONNAISE**

1 qt. 16 oz. jar **85¢**

**TOMATOES**

IONA BRAND

4 1 lb. cans **59¢**

**ANTI FREEZE**

MARVEL

qt. can 49¢

gal. **\$1.59**

**PEACHES**

A&P BRAND  
YELLOW CLING

1 lb. 1 oz. can **21¢**

**HADDOCK DINNER**

CAP'N. JOHNS  
FROZEN

9 oz. pkg. **49¢**

# Sherman's

## MEN'S WEAR

# traditional apparel

- Deansgate Clothing
  - Byford Sweaters
  - Corbin Slacks
  - Lord Jeff Sweaters
  - Eagle Shirts
- Featuring "tromblees"

You're invited . . . to our formal opening TODAY . . . and we'll be here until 9 tonight . . . with a drawing for many valuable prizes at 7:30 this evening. We (Ted Sherman and Calvin Rice) would like to show you the fine, colorful apparel for men along with some interesting imports to give you that "Traditional Look."

### FORMAL OPENING

Thurs., Sept. 29, 10 to 9  
Come in and register for many  
VALUABLE PRIZES!!

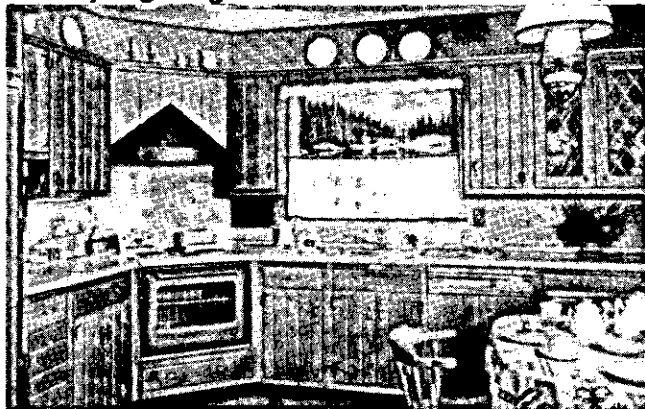
**Sherman's**  
92 State St. Phone 434-1898  
First Trust - Park & Shop

SUBSCRIBE TO THE SPOTLIGHT

## KITCHEN DESIGNERS

OF ALBANY, INC.  
1670 CENTRAL AVE., ALBANY, N. Y.

Let Your Eyes Tell You What Words Cannot!  
**WOODMODE KITCHENS**  
Styling Elegance and Excellent Values!



**CALL 869-0044 TODAY!**

**MONDAY Thru FRIDAY 10 A. M. - 5 P. M.**  
**SATURDAY 'TIL 1 P. M.**  
**EVENINGS BY APPOINTMENT**

tion of a secondary treatment plant to serve only the Delmar Elsmere District, or the abandonment of that area's plan in favor of connecting with the City of Albany's proposed treatment plant on Westerlo Island if that plant is built.

Kenneth Fraser said of the recommended system, "It's planned to take care of the entire town, when and if the town is able to take advantage of it."

## Home Study Courses Ready

Applications are now being accepted for two home study courses in conservation offered by Cornell University.

The courses will begin October 1, announced Prof. Richard J. McNeil, conservationist, N.Y. State College of Agriculture.

The first course, consisting of seven lessons, is entitled "Conservation of Natural Resources." It reviews the history of conservation in North America, and outlines the principles on which present-day wildlife management are based.

The importance of soil, water, forest resources, and wildlife management are discussed as well as problems of their present use and management for future generations.

The second course, designed for people with some background in conservation or those who have taken the first course, is entitled "Current Topics in Natural Resources."

It explores, in some depth, eight subjects including the changing use of land, the forest preserve, water resources and pollution, the barge-canal system and deer in New York State.

The fee for each course is \$10 and includes lessons and text books. Completed lessons will be corrected by Cornell's conservation department staff and returned with comments to each correspondent.

McNeil reported more than 600 people between the ages of 14 and 78 enrolled in the two courses last year. Included were housewives, doctors, lawyers, laborers, fiction writers, ma-

### CLASSIQUE DANCE SCHOOL

154A Delaware Avenue  
CHILDREN AND ADULTS  
PRIVATE OR GROUPS  
All Types of Dancing and  
Body Conditioning

HE 9-3331

Boghe Follett

## SMORGASBORD

Clarksville Community Church  
(Reformed)

SATURDAY, OCTOBER 1  
Adults: \$2.75

Children under 12: \$1.50

For reservations call:

Mrs. David Ingraham for 4:00 or  
5:15 - 768-2897

Mrs. James Butler for 6:30 or  
7:30 - 768-2879

Take-out service: \$3.00 per diner

## VAN'S BOOK ROOM

Cornelius Vandermel, Mgr.  
13 LINCOLN AVE., ELSMERE  
specializing in  
Bibles & Bible-related Supplies  
for  
Church, Bible School & Home  
Can obtain any book fit to read  
on short notice and any  
BUSINESS SUPPLIES  
for office or private use



Please, Mommy, take me to the

**Edwards**

**SHOE DEPARTMENT**

LITTLE FOLKS SHOP  
Delmar Store

chinists, and persons from many other fields.

Though the courses were prepared primarily for New York State residents and concerned New York State's conservation programs and problems, correspondents represented 20 states, three Canadian provinces, and the Panama Canal Zone.

This is the sixth year the conservation course has been offered and the second year for the one on current topics.

McNeil said further information and application blanks may be obtained from Fernow Hall, Cornell University, Ithaca, N.Y. 14850.

## Leaders Announced

Plans for the coming season, Study Group Leaders and Committee Chairmen have been announced for the Delmar Progress Club by the President, Mrs. William J. Sharpe. The Drama Group, which is planning a series of Guided Tours is headed by Mrs. Robert Kellum. Mrs. Sidney D. Vunck heads the Garden Group whose season highlight will be a spring Flower Show. Mrs. V.A. VanVolkenburgh is Chairman of the Government Group which is active in the Women's Joint Legislative Forum. Mrs. Franklyn B. Amos heads the Literature Group and Mrs. James H. Ackerman the Music Group.

Program Chairman is Mrs. George W. Parker. Other Chairmen include Mrs. David I. Sch-

wartz, Year Book; Civic Betterment, Mrs. Donald C. MacRae; Club History, Mrs. William H. Waldbillig; Mrs. Donald E. Hall, Community Ambassador; Mrs. John D. Brown, Conservation and Mrs. Edwin B. Piper, Federation Chairman. Mrs. Claude A. White, Finance; Mrs. William L. Murphy, Health and Safety; Mrs. Addison J. Clark, Legislative; Mrs. Olin Bouck, Membership; Mrs. Claude A. White, Mrs. Lester N. Stanley and Mrs. Joseph J. Stella head the Nominating Committee. Mrs. Robert I. Kellum is Parliamentarian and Mrs. Marvin C. Hinkelman, Publicity. Scholarship and Service will be covered by Mrs. E.S. Widdowfield and Mrs. John C. Haberer. Mrs. Robert Selkirk and Mrs. Richard Atkins, Service for the Blind and Mrs. Howard W. Sammons and Mrs. Russell Miller, Social Activities.



AFTER A WONDERFUL summer in Poland and East Germany, Bethlehem Community Ambassador Tim Thornton is glad to be home with his family: left to right rear, Terence, Mr. Thomas B. Thornton, Tim, and Mrs. Thornton; front, Todd and Trent.

*The House of*  
**MAPLE**  
*FOR COLONIAL FURNITURE*  
*1/2 MILE SOUTH OF LATHAM*

**Famous Brand Name**  
**Early American of Solid**  
**Maple, Pine and Cherry**  
**CONVENIENT BUDGET TERMS**

**OPEN**  
**EVENINGS**  
**TIL 9 P.M.**  
**SATURDAYS**  
**TIL 5 P.M.**  
**FRONT OF**  
**STORE**  
**PARKING**



## SLINGERLANDS MARKET

1526 N. Scotland Rd., (next to Fire House)  
Slingerlands, New York

(We reserve the right to limit quantity)

# Pork Sale

**RIB END**  
**ROAST**  
**49¢**  
lb.

**Tablerite Sliced**  
**BACON**  
**85¢**  
lb.

**FRESH WHOLE**

**PORK LOIN**

lb. **63¢**

**RIB HALF**

**PORK ROAST**

lb. **59¢**

**LOIN HALF**

**PORK ROAST**

lb. **69¢**

**LOIN END**

**ROAST**

lb. **59¢**

**COUNTRY STYLE**

**SPARE RIBS**

lb. **59¢**

**CENTER CUT**

**PORK CHOPS**

lb. **85¢**

# Coming Soon!

## DELAWARE GARDENS Gift Shop

Four Corners, Delmar

IS PROUD TO ANNOUNCE THE ADDITION OF

# A BATH SHOP

at our present location

(WATCH THE SPOTLIGHT FOR THE OPENING DATE)

### JAMES W. BARTLEY and SONS

Plumbing, heating & electric  
water pump sales & service  
Clarksville PO 8-2230

### Ed Traeger LANDSCAPING

Now is the time for new  
lawn seeding and old lawn  
rejuvenation.

FREE ESTIMATES

Residential - Commercial  
Slingerlands IV 2-1794

RCA Whirlpool - Magic Chef  
Admiral & Hotpoint Appliances  
MOTOROLA TV  
**DELMAR APPLIANCES**  
239 Delaware Avenue, Elsmere  
Telephone 439-4558

**REICH PHOTOGRAPHIC**  
154 Kenwood Avenue, Delmar

STUDIO PORTRAITS  
CHILDREN & ADULTS  
BY APPOINTMENT 439-2058  
For completely free introductory  
Portrait, Call now . . .

**By Popular Demand, Return Engagement!**

**TWO BIG NIGHTS: Thursday, Sept. 29 & Friday, Sept. 30**



AT TOMMY HAKIM'S  
**DELABAR**

302 DELAWARE AVE.

★ **EDDIE** "THE SHIEK"  
**KOCHAK**

AND HIS CELEBRATED  
ARABIAN NIGHTS  
REVUE!!

Featuring ★ NICK RASSAIS  
"GREEK CLARINETIST"  
PLUS 2 BEAUTIFUL  
ORIENTAL DANCING  
GIRLS!

CONTINUOUS ENTERTAINMENT! RESERVE NOW! HE 6-8118

## Landscaping

This is a good time of year to take a look at your property. Is it landscaped to suit you? Are there changes you'd like to make? Or, are you living in a new house and with a total landscaping job facing you?

If you are planning to do any landscape work then one of the following bulletins, prepared by specialists at the College of Agriculture at Cornell, should be helpful.

"Foundation Plantings About the House" gives some ideas on where to plant tall and short growing shrubs, how to handle high foundations and how to plant around a split level house. "Shrubs for Landscape Plantings in New York State" is a companion to "Foundation Plantings . . ." It lists shrubs that are hardy, tells how tall they will grow, what color the flowers will be and what the spacing from the house, walk and other shrubs should be.

"Landscape Design for Residential Properties" will help you place trees to best frame your house. It also discusses that layout of the total property including an outdoor living area, play area, garden, etc.

Other bulletins that will be of help include "Ornamental Vines for Landscape Planting," "Ground Covers - Carpets for Outdoor Living" and "The Home Lawn."

Be sure to request your copy of the above bulletins from the Albany County Extension Service.

## Soil Testing

Very often people call the Extension Office to inquire about soil testing. There is no magic in soil testing, however, it is one guide to planning lime and fertilizer programs.

Two soil testing services are available through the Extension Service. First, and most important, is the analysis for lime needs. This analysis records the acidity of the soil. Knowing the acidity and the type of soil, a skilled person can recommend the proper amount of lime to correct

von Bank's  
TV SERVICE  
HE 4-5887

Quality-Responsibility-Honesty

PIANO  
INSTRUCTION

**Renato Rolando**

Organist of St. Thomas  
Church, Delmar

Graduate of Conserva-  
tories of Turin and  
Pesaro, Italy

344 Kenwood Avenue  
HE 9-3206



*Traditional  
Apparel  
for the  
Young Man*

- GANT SHIRTS
- CORBIN TROUSERS
- BURBERRY RAINCOATS
- RIVETZ NECKWEAR
- ALAN PAINE SWEATERS
- JOHN ALEXANDER BLAZERS
- FREEDBERG OF BOSTON SUITS

*Stulmaker's*  
8 James Street  
Just off State  
Open Thursday to 9  
Member Park'n Shop

**Top Soil at its Finest!**

Rich, specially prepared, sandy loam or sandy clay loam. J. W. MICHAELS CO., INC., LANDSCAPE CONTRACTORS. HE 9-3823:

**FOWLER'S**  
**Liquor Store**

See ERNIE or GEORGE  
for BETTER SPIRITS



Elsmere - at - the - Light  
Parking right in front of store.  
HE 9-2613 "We deliver."



Chilled, ready-to-serve  
WINES & CHAMPAGNES

**Only at MIDAS**

**THE MUFFLER**  
**GUARANTEED**  
**FOR AS LONG**  
**AS YOU OWN**

**YOUR**  
**CAR**



**Your Guarantee is Honored**  
**Wherever You Drive—**  
**At Midas Muffler Shops**  
**From Coast-to-Coast**

America's finest muffler is  
installed in just 15 minutes.  
No charge for installation.  
We have a complete stock  
of mufflers for American  
and foreign cars.

(Guarantee does not cover re-  
placement service charge)

**MIDAS**  
**MUFFLER SHOPS**

Two Convenient Locations  
1722 Central Ave., Albany  
or in Latham - Rt. 9 - 1/2  
mi. north of Latham Shop-  
ping Ctr.

the acidity if necessary. A soil  
test is the only way if your soil  
needs lime.

In some situations it is desir-  
able to learn more about the  
nutrient levels of the soil. To  
do this, samples are sent to the  
College of Agriculture at Cornell  
for a more complete analysis.  
Complete soil tests have been  
invaluable guides to farmers  
who use large amounts of fertil-  
izer. Since relatively small  
amounts of fertilizer are used  
around the home, a complete  
test is usually not needed.

No matter which test is made  
on your soil, the test is only as  
accurate as the sample you take.  
Do you know the proper way to  
take a soil sample. Follow these  
simple steps to make the results  
of your soil analysis more ac-  
curate.

First, divide the area to be  
sampled into areas that are alike.  
That is, the vegetable garden  
should be separate from flower  
gardens and lawn areas. If you  
have fertilized or limed the front  
lawn differently than the back  
lawn, then these should be sam-  
pled separately.

Next take a composite sample  
from each separate area. To get  
this composite sample, take soil  
from at least 4 to 6 places within  
the area. The more places you  
get the soil from, the better the  
composite sample. Mix the soil  
taken from each area together  
and save a pint of soil for the an-  
alysis. Repeat the process in each  
separate area to be tested.

One simple way to get a soil  
sample is to dig a hole with a shov-  
el or trowel. Then cut a slice of  
soil from one side of the hole.  
Save a ribbon of soil from the cen-  
ter of this slice for your com-  
posite sample.

**How Deep to Sample**

The depth of the sample var-  
ies with the plant involved. On  
established lawns sample to a  
depth of three to four inches. For  
gardens or when preparing new  
lawns, sample as deeply as you  
will work the soil. This is usually  
six to eight inches deep.

Samples can be placed in clean  
cans, jars or cardboard cartons  
and taken to your nearest County  
Extension Service Service Of-  
fice or to your local garden cen-  
ter.

(Continued on Page 24)

USDA CHOICE - EXTRA WELL TRIMMED

# STEAK

PORTERHOUSE

lb. **98¢**

SIRLOIN

lb. **89¢**

**SAUSAGE** Smith's of West Winfield -lb. bag **73¢**

**HAMS** Rath's Honey-glazed Canned -4 lb. can **4.94**

**CHUCK** Ground - Extra Lean 3 lbs. or more - lb. **73¢**

MEAT DEPT. PHONE: 439-9419

Custom  
Cut and  
Wrapped

**FREEZER BUYS**

**CHOPPED SIRLOIN PATTIES** (made up to order)  
**HINDQUARTER** lb. **69¢** **FOREQUARTERS** lb. **49¢**  
**SIDES OF BEEF** U.S.D.A. CHOICE lb. **59¢**

Special  
Freezer  
Paper Used

**PUDDING MIXES**

**CRACKERS**

**POP-UPS**

**Cleanser or Fabric Softener**

**MY-T-FINE** **4** for **29¢**  
Assorted for  
**NABISCO,**  
**RITZ** **31¢**  
-12 oz. pkg.  
**TOASTEM**  
(Your choice) **3** for **\$1**  
**NANCY-B**  
All-purpose **29¢**  
- qt. bot.

## PRODUCE SPECIALS

Yellow Cooking

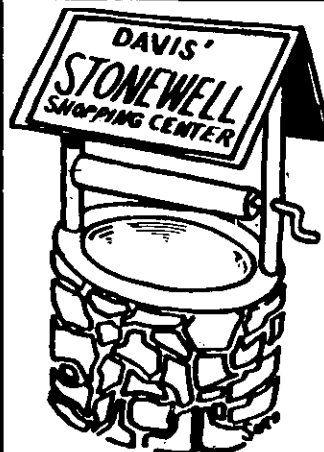
**ONIONS**

3 lb. bag **29¢**

Freshly Pressed  
SWEET

**CIDER**

**79¢** gal. (Free jug)



**JUNCTION HIGHWAYS 85 & 85A**  
**NEW SCOTLAND, NEW YORK**

**HE 9-5398**

**Open Daily and Sundays**  
**10 A.M. to 10 P.M.**

**Reserve right to limit quantities**  
**Prices effective: Thurs., Fri., Sat.**

**(9/29, 9/30, 10/1)**



HERE WE ARE . . . Bodnar's Best . . . we may not win this year's beauty contest . . . but we do service and sell the beautiful new 1967 OLDSMOBILE. The 67's we offer to you are at the best prices, with the highest trade-in allowances . . . and give you the "BODNAR BEST" service you deserve. And that goes for our Value-Rated used cars too. Only the cars that you would enjoy driving can pass our rigid five-point test program. Meet the crew soon. Visit us at Bodnar Oldsmobile, 526 Central Avenue, Albany.

*Compare!*

Why settle for less than you really want: At Bodnar Olds, you can choose from northeast New York's largest stock of NEW 1967 Oldsmobiles . . . Deltas, 442's, Ninety-Eights, Cutlass and the sensational copied Toronado. At Bodnar Olds you get the best buy, but you never miss out on quality and top-notch service. That's why we say . . . "Step Up to Bodnar," and drive out in your new 1967 Rocket-Action Olds.

# SEE... THE CARS OF TOMORROW TODAY!

*Test Drive*

any of the advanced 67 Olds models. There is a rocket to fit your pocket . . . Safety, Styling . . . Value . . . and Low cash difference . . . Test drive by yourself and you'll agree . . . this is the year to Step up to a

**Bodnar  
Oldsmobile**

526 Central Ave., Albany, N. Y.  
Phone 482-4491

STEP UP TO A

**Bodnar  
Oldsmobile**

IN '67



**SWEDISH SMORGASBORD**

The annual Swedish Smorgasbord of the Clarksville Community Church is set for Saturday, October 1. Members of the Couples' Club are preparing to spread the board with a variety of foods ranging from jumbo shrimp cocktail to cream puffs.

The menu features appetizers of shrimp cocktail, fruit juices and clam chowder. Going to the board will permit diners to select Swedish meatballs, roast beef, ham, turkey, macaroni salad, salmon salad, potato salad, baked beans, deviled eggs, cabbage kraut, varieties of bread, fish, cheese, pickles, olives, coupled with parsley potatoes, hot vegetables, molded fruit and vegetable salads and MORE! To top off the meal, the diner will have his

choice of homemade pies, apple-sauce cake, cream puffs and coffee, tea or milk.

Proceeds from previous Smorgasbords have furnished the new Christian Education Building with draperies, other necessary furnishings and have been applied to the building debt.

Sittings will be at 4:00, 5:15, 6:30 and 7:30 P.M.; Mrs. Douglas Moak will provide organ music; and a take-out service will be available.

**MEETING**

The first fall meeting of the Wesleyan Service Guild of the Delmar Methodist Church will be held on October 4 at 7:30 p.m. It will be a dessert meeting with a travel program.



MARTA BECKET, artist, musician, and talented ballet dancer will be guest performer at the opening dinner of the Delmar Progress Club on October 3, when she brings her one-woman show to this area. She will perform a series of dance mimes in Fellowship Hall of the Delmar Methodist Church. Marta Becket has sanded in such outstanding Broadway musicals as *Showboat*, *A Tree Grows in Brooklyn*, as well as *Wonderful Town*, and has presented two original ballets in Carnegie Hall. She is also a former member of the Ballet Corps of Radio City Music Hall and now employs her multiple talents creating the stories and choreography for her dance mimes and designing the costumes and stage decor.

# Why buy Fidelity Certificates



Q. "Mr. Ryan, other banks have followed your lead and now advertise 5%. Why should I buy a Fidelity Savings Certificate?"

A. "Remember, these other banks announced they anticipate paying 5%. Fidelity Bank guarantees 5% on its Savings Certificates for periods up to two years."



Q. "Why are other banks following your lead?"

A. "Because interest rates in this region have not been realistic. People were entitled to a higher rate on their savings."

Remember, we will not lower our rate . . . it is guaranteed! Drop in soon; we're open 51 hours a week including Saturday.

# elity Savings

## now?

### A bank president explains . . .

*An interview with Patrick J. Ryan, President, Fidelity Bank of Colonie*



Q. "Why is the two year guarantee important?"

A. "Other banks could lower their rates at the end of each quarterly period. We will not."



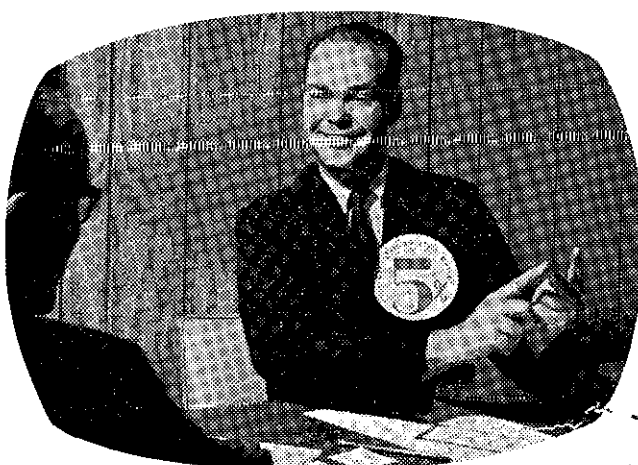
Q. "How does it work?"

A. "You buy a Certificate for an amount from \$2,500 to \$10,000 for any period from 12 to 24 months. At the end of that period, you receive the amount of the Certificate plus 5% interest from the day of deposit."



Q. "Why are people entitled to a higher rate?"

A. "Money is very tight because of the unusual demand for credit in the expanding economy of this region. The basic law of supply and demand means the cost of borrowing money is going up and those who provide the money are entitled to a higher rate. Fidelity Bank led the way to higher rates for depositors with its Savings Certificates."



Q. "May I redeem the Certificates in less than 12 months?"

A. "Yes, if necessary. If you wish to do so, upon 90 days written notice we will redeem your Certificate plus earnings of 3.75% for the time you held the Certificate."

THE  
GROWING BANK



*Fidelity Bank*  
OF COLONIE

#### DROPPING-IN HOURS

Mon., Tues., Wed. . . . . 9 A.M. TO 6 P.M.  
Thurs., Fri. . . . . 9 A.M. TO 7 P.M.  
Sat. . . . . 10 A.M. TO 2 P.M.

Phone 785-6647

NUMBER ONE OLD LOUDON ROAD, LATHAM, NEW YORK, ONE MILE SOUTH OF THE LATHAM CIRCLE

# FREE GIFTS!

**WEDNESDAY, SEPTEMBER 28  
THROUGH MONDAY, OCTOBER 17**

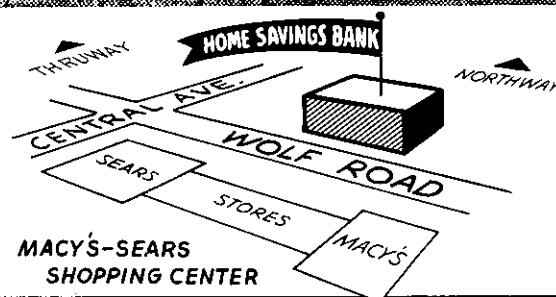
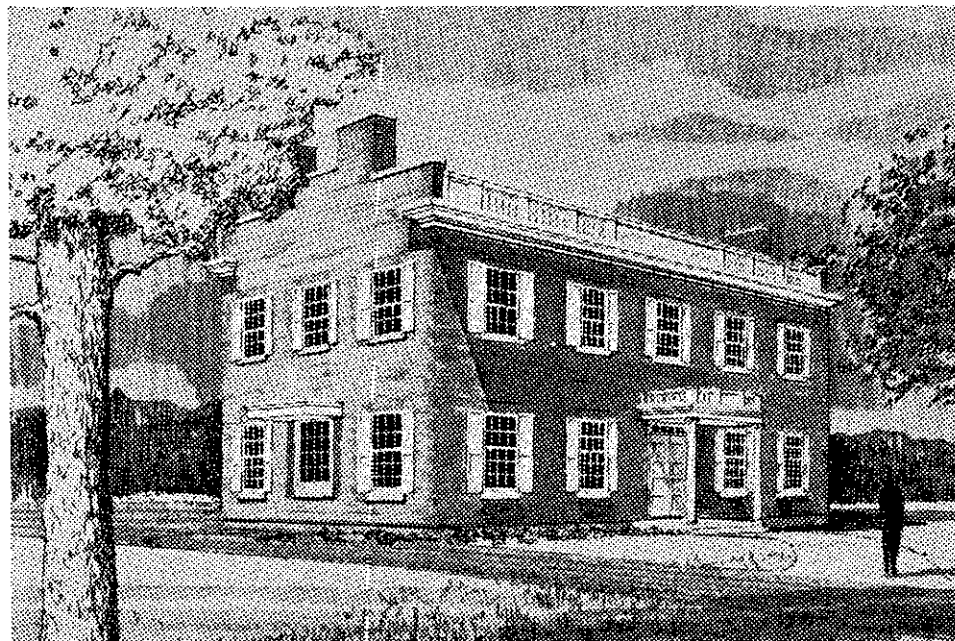
**SPECIAL BANKING HOURS FOR THESE DAYS ONLY**

Monday through Friday 9 A.M. to 6 P.M.

Thursday Evening to 8 P.M.

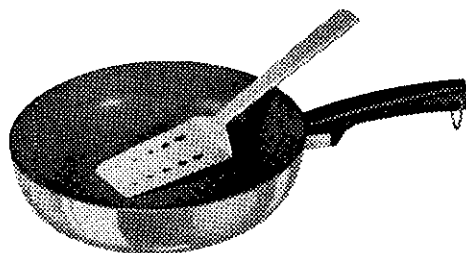
Saturday: New Accounts only 9 A.M. to 6 P.M.

**To Celebrate the Opening  
of the NEW Building of our  
Colonie Office, 34 Wolf Road  
opposite MACY'S-SEARS SHOPPING CENTER  
Colonie-Albany, N.Y.**

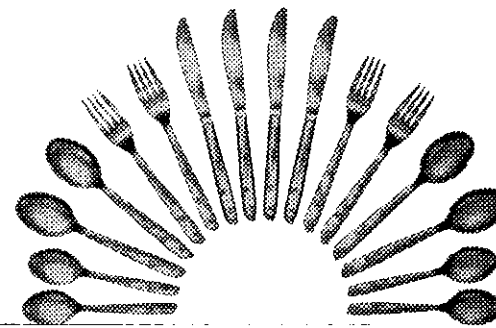


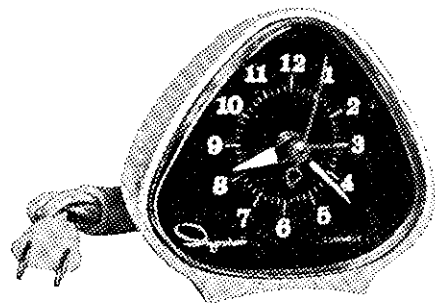
## Your Choice FREE!

Any one of these valuable gifts is yours when you open a new savings account of \$25 or more at this office only during the opening celebration of this beautiful new building. Only one gift to an individual. Come in and get yours while the supply lasts. Sorry, no gifts can be mailed.



**WEST BEND TEFLON-COATED SKILLET**





### INGRAHAM ELECTRIC ALARM CLOCK

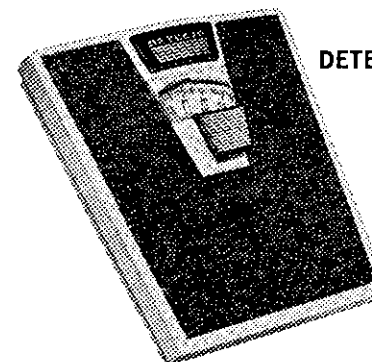
With a striking new concept in contemporary styling, this compact alarm is ideal for that overcrowded night stand. Unique, tapered beige case is only  $3\frac{3}{4}$ " high and  $4\frac{1}{2}$ " wide. Luminous numbers on dark dial, easy to read in darkness or daylight.



### CARRYALL BAG

A roomy piece of soft luggage you can use for any purpose — a travel bag, beach bag, picnic bag. Colorful Scotch plaid, with vinyl waterproof backing. E-Z slide zipper. A big  $16\frac{1}{2}$ "x $16\frac{1}{2}$ "x8".

too. Size  $10\frac{1}{2}$ "; with spatula.



### DETECTO BATHROOM SCALE

Magnified dial. Consistently accurate. Mat finish won't scuff or soil.

Simple, elegant "Night Sky" pattern — maintains its beauty in everyday use for many years. The 16-piece service consists of 4 knives with serrated blade edges, 4 forks, 4 teaspoons and 4 tablespoons.

# HOME SAVINGS BANK

94 years of service to savers 1872-1966

Assets Over \$90 Million

## FREE PARKING

Member Federal Deposit Insurance Corporation

# 5%

### A YEAR

Total rate anticipated for quarter beginning October 1, 1966, based on continued favorable earnings. Includes  $\frac{1}{2}\%$  a year extra dividend plus  $4\frac{1}{2}\%$  a year regular dividend.

*Paid From the Day of Deposit  
Compounded Quarterly*

Money deposited by **OCTOBER 10**  
earns dividends from **OCTOBER 1**

**SPECIAL BANKING HOURS DURING THE OPENING PROGRAM ONLY  
WEDNESDAY, SEPTEMBER 28 THROUGH MONDAY, OCTOBER 17**

**Monday through Friday 9 A.M. to 6 P.M.—Thursday Evening to 8 P.M.  
Saturday for New Accounts only 9 A.M. to 6 P.M.**

**We try  
harder.**



**YES, AVIS**



**Family cars**



**Firm cars**



**Vacation cars**



**Business cars**



**Day cars**



**Weekend cars**

**TRUCKS TO**

**Avis rents all makes of cars . . . features Plymouth . . . freshly washed**

**Your Avis car is as near as your**

Rates subject to change without notice.				Commercial discounts do not apply to		
CAR	HOURLY	DAILY	WEEKLY	MONTHLY		
				One Month (1,000 Miles Free)	Two Months (2,000 Miles Free)	Three Months (3,000 Miles Free)
<b>Compact</b>	<b>\$1.50</b> Plus 11¢ per mile	<b>\$11.00</b> Plus 11¢ per mile	<b>\$55.00</b> Plus 11¢ per mile	<b>\$205</b> Plus 4¢ per mile	<b>\$180</b> Plus 4¢ per mile	<b>\$105</b> Plus 4¢ per mile
<b>Sports Model</b>	<b>\$1.50</b> Plus 12¢ per mile	<b>\$12.00</b> Plus 12¢ per mile	<b>\$60.00</b> Plus 12¢ per mile	<b>\$220</b> Plus 4¢ per mile	<b>\$190</b> Plus 4¢ per mile	<b>\$175</b> Plus 4¢ per mile
<b>Basic Sedan</b>	<b>\$1.50</b> Plus 12¢ per mile	<b>\$12.00</b> Plus 12¢ per mile	<b>\$60.00</b> Plus 12¢ per mile	<b>\$230</b> Plus 5¢ per mile	<b>\$195</b> Plus 5¢ per mile	<b>\$180</b> Plus 5¢ per mile
<b>Station Wagon</b>	<b>\$2.00</b> Plus 13¢ per mile	<b>\$13.00</b> Plus 13¢ per mile	<b>\$65.00</b> Plus 13¢ per mile	<b>\$265</b> Plus 5¢ per mile	<b>\$230</b> Plus 5¢ per mile	<b>\$210</b> Plus 5¢ per mile
<b>Convertible</b>	<b>\$2.00</b> Plus 13¢ per mile	<b>\$13.00</b> Plus 13¢ per mile	<b>\$65.00</b> Plus 13¢ per mile	<b>\$280</b> Plus 5¢ per mile	<b>\$240</b> Plus 5¢ per mile	<b>\$230</b> Plus 5¢ per mile
<b>Premium</b>	<b>\$2.50</b> Plus 14¢ per mile	<b>\$14.00</b> Plus 14¢ per mile	<b>\$70.00</b> Plus 14¢ per mile	<b>\$290</b> Plus 6¢ per mile	<b>\$250</b> Plus 6¢ per mile	<b>\$240</b> Plus 6¢ per mile

- All monthly rates include 1,000 free miles per month
- All rates include maintenance
- Air conditioning \$25 additional per month, with no increase in mileage charge
- First full tank of gas included free
- Rates include, at no extra cost to the renter, insurance coverage of \$100,000/\$300,000 public liability, and \$25,000 property damage. Further, the renter's liability for damage to the rented vehicle is limited to \$100, which liability may be waived for an additional \$15 per month

**JUST SAY, "CHARGE IT" — We honor all these Charge Cards: American Oil Co. — Diner's Club — Carte Blanche — Discover — Mastercard — Union Pacific — Visa**  
course, an Avis charge (We'll open one for you, if you wish!)

**FOR RESERVATIONS, CALL IV 9-5487**

**AVIS LOCATIONS: ALBANY, Albany County Airport or 16 Watervliet Avenue. SCHENECTADY, Sam Willis Gulf Stream Service Station, corner of 19th Street and Franklin Street. WATERVLIET, Jim Hayes Esso Station, corner of 19th Street and Franklin Street.**

# S RENTS

 Theatre cars  Party cars

 Airport cars  Dockside cars

 Weekly cars  Monthly cars

- ALL TYPES

with a full tank of gas, ready and raring to go when and where you wish.  
 ne anywhere in the Tri-City area.

special rate

WEEKEND SPECIAL

FRIDAY to  
 MONDAY

\$ **7.95**  
 per day

PLUS 10¢ PER MILE

FROM FRIDAY AT  
 5:00 P.M. TO  
 MONDAY AT 9:00 A.M.

American Express - And, of

at the corner of Nott Ter-  
 2nd Avenue.



SERVING ALBANY - TROY  
 - SCHENECTADY AREA



ALBANY

**IV 9-5487**

CENTRAL &  
 WATERVLIT AVES.



SCHENECTADY

**377-7373**

NOTT TERRACE &  
 FRANKLIN STREET



ALBANY AIRPORT

**UN 9-6268**

COLONIE

*Bahlsen Imported*

# COCKTAIL & SWEET BISCUITS

## Walley's Farm

924 New Scotland Road  
Albany, N.Y. NO 2-0543

## PRE-COLLEGE STUDENTS NEED PREPARATION!

... and Albany Business College is offering academic and personal educational experiences not available elsewhere by presenting its

# PREP

PROGRAM FOR PRE-COLLEGE STUDENTS

**SATURDAY MORNINGS STARTING OCT. 15  
FOR JUNIOR-SENIOR HIGH SCHOOL STUDENTS**

### FIVE INDIVIDUAL COURSES!

**TECHNIQUES OF LEARNING** ... a 12-week course programmed by college graduates to help students learn the techniques of speaking, listening and analyzing — all aimed at helping the student learn more easily.

**READING IMPROVEMENT** ... a 12-week course aimed at preparing the student to better handle the increased reading load demanded in college and business careers.

**NOTE-TAKING SHORTHAND** ... taking notes from classroom lectures is an inescapable problem in college. Learning Stenoscript ABC Shorthand is one of the easiest and quickest shorthand systems devised. It adequately prepares the student for any note-taking situation. A 12-week course.

**PERSONAL TYPEWRITING** ... a necessary and basic skill for all college students PLUS a marketable and employable achievement. A 12-week course.

**SKILL TYPEWRITING** ... a 12-week course for those who know how to typewrite and want to enlarge on their working knowledge of typewriting.



Phone or write for brochure

## ALBANY BUSINESS COLLEGE

130 Washington Ave., Albany, N. Y. 12210

PHONE 465-3449



HEAP BIG POW-WOW ends summer Long House-Sunny Acres! Princess Bee and Chief Jim presided at the Indian Dance and Festival on Friday, August 27. The tribe spent many hours preparing costumes and learning the ritual.

## Rug & Furniture Cleaning

SAVE on ABBEY'S famous "Pile Brush and Shampoo" process in Home, or FREE pick-up and delivery.

# ABBEE

Rug & Carpet Co.  
243 Dela. Ave., Delmar  
HE 9-9978

25 yrs. in every phase of the Carpet Business

**We'll make your  
motor  
sing**



- \* Engine Tune-up
- \* Front End Alignment
- \* Automatic Transmission Service
- \* Modern Equipment
- \* Skilled Mechanics

## BAILEY'S GARAGE

Phone Delmar HE 9-1446  
Oakwood Rd., Elsmere



THE SPOTLIGHT

DORIS E. CAROLINE, daughter of Mr. and Mrs. Andrew R. Caroline of Berne, became the bride of Wendell M. Sears, 30 Hawthorne Avenue, Delmar, in a service held at the First Baptist Church, Westerlo, August 27.



SUSAN WILLIAMS, daughter of Mr. and Mrs. Kenneth Williams, 72 Winne Road, Delmar, became the bride of Burton Almindo, Jr., son of Mr. and Mrs. Burton Almindo, Coeymans, on September 10, at St. Thomas' Church, Delmar.



## Recent Brides

SARAH JANE HAZELTON, daughter of Mr. and Mrs. Samuel H. Hazelton, 10 Darroch Road, Delmar, became the bride of Donald DeForest Beebe, Riverside, Conn., on September 10, at the Delmar Presbyterian Church.

## CAT HAVEN FOR CATS ONLY

Individual Care in Private Home  
Ethel Fay ROCKWELL 5-2715

## PIANO ACCORDION Beginner Guitar CHILDREN & ADULTS

Rt. 32, Feura Bush Rd. (Next to church)  
HE 9-3750 Lydia E. Egly

STAGE  
SHOW  
IN PERSON

SCHENECTADY  
FABIAN'S  
**Proctor's**

One Performance Only  
**Wednesday**  
Oct. 5th at 8:30

**NANCY  
WALKER**

**SCOTT  
McKAY**



the UNANIMOUSLY ACCLAIMED COMEDY HIT!

by **MURRAY SCHISGAL**

WITH **DONALD HOTTON**

ORCH. 4.50, 3.50; ORCH. LOGES 3.00; BALC. LOGES 4.50; BALC. 2.50, 2.00.  
MAIL ORDERS — SEND SELF-ADDRESSED STAMPED ENVELOPE

## Fanfare Beauty Salon

RD 2, Altamont, New York

Next to J & J Supply

HOURS  
9-5 Tues.—Sat.  
10-8 Friday

Phone 861-8438



## Joseph's Restaurant & Lounge

— Under New Management —

9-W

Selkirk

767-7571

Caterer to Banquets, Weddings, Parties  
Lou Frangella, Proprietor

OPEN DAILY

11 A.M.

SUNDAY

1 P.M.

SATURDAY ONLY

Music for dancing from  
10 P.M. to 2 A.M. by  
THE CASUALS

LUNCHEON

served daily to bridge  
parties, meetings, clubs  
and special groups.

## Hunting Season

# OPENS

# Mon., Oct. 3

... and we have just about everything  
you will need ... including licenses!



## TAYLOR & VADNEY

303 CENTRAL AVE.

HE 4-9183

Open Daily—9 A. M. to 9 P. M.



## Home Decorating Fabrics

**Finest "Seconds" in Fabrics**  
**54 inches wide - 100% Cotton**

### SCREENED PRINTED DRAPERY

Full bolts - seconds - heavy quality, designers patterns and coloring - stain resistant finish. For draperies, slipcovers, upholstery, bedspreads and many more decorat-uses.

**\$1.50 per yard**

(Natural retail \$2.98 per yard if firsts)

### DRAPERY ANTIQUE SATINS

45 inches wide - 100% acetate - full bolts - seconds - smartest decorator colors, choice of colors and weaves.

**75¢ per yard**

### BROCADED DRAPERIES

48 inches wide - blended of rayon, acetate and cotton - beautiful patterns in assorted colors. (Natural retail \$3.95 if firsts)

**\$1.50 per yard**

### VYNAL UPHOLSTERY FABRIC

54 inches wide - heavy gauge - for chairs, hassocks, valances, slipcovers. (Natural retail \$3.95 if first)

**\$1.50 per yard**

### VALANCE & TIER SETS

Carefree - 3-piece - 100% cotton - beautiful prints - decorator fast colors - curtains 60" W.P. x 36" long - Valance 60" W.X. x 11" deep.

**\$1.50 a set**

## MILL FABRIC STORE

FREE PARKING Cor. Rt. 9W & Rt. 81 FREE PARKING  
 WEST COXSACKIE, NEW YORK

Hours: Mon, Tues, Thurs, Sat - 9:00 A.M. to 6:00 P.M.  
 Wed & Fri - 9:00 A.M. to 9:00 P.M.

## SOIL TESTING (Continued from Page 13)

ter for testing. Be prepared to tell the tester when and how much fertilizer has been used in the past and whether this will be used for lawn, garden, etc.

Don't forget, the results of

the soil analysis are only as accurate as the sample you take. Take a little extra time to get a sample that represents the area and make the sample worthwhile.



DALE JEAN WEINBERG, daughter of Mrs. Thresa Weinberg, 16 Sunset Drive, Delmar, and the late Deputy Commissioner of Correction Benjamin Weinberg, has made Dean's list for her Freshman semester at Syracuse University. Miss Weinberg was elected Standards Chairman of Flint Hall, and was appointed as Circulation Manager of The Promethean.

### TOP TENTS



The two most important features of a good tent are protection and comfort. Almost 98% of all tents sold today are cotton canvas - a family of rugged fabrics that includes duck, drill, twill and poplin.

### GOOD BUY



Consumers are paying consistently lower prices for prescription drugs, while the cost of living continues to rise - according to U.S. Bureau of Labor statistics and the Pharmaceutical Manufacturers Association.

### DELICIOUS SERVED GOLDEN

**'CHICKEN IN A BASKET' ..... \$1.75**

Tender and crisp, with our French fried potatoes, rolls and butter

**'CHICKEN LITTLE' ..... 99¢**

For small fry. A generous portion of six drummettes, served with golden French fried potatoes

## TOLL GATE

IN SLINGERLANDS

R. E. ZAUTNER

PHONE 439-9824

R. N. ZAUTNER

HE 9-4949

SPOTLIGHT CLASSIFIEDS

HE 9-4949

**CLASSIFIED AD POLICY**  
Classified Ads in the Spotlight must be paid for when the ad is submitted. We must enforce this policy strictly. Our rates are too small to permit invoicing and bookkeeping on these accounts. Please do not ask us to make any exception to this rule.

Your copy and remittance must reach us on Friday before 4:30 P.M. in order to appear in the following Thursday issue.

#### CLASSIFIED ADVERTISING RATES

10¢ per word for each insertion;  
\$1 minimum.

**CALL HE 9-4949**

Write, or stop in at our  
convenient office:

154 Delaware Avenue

#### ALTERATIONS & SEWING

**ALTERATIONS** and sewing. M. Buess. HE 9-1270. tf

**ALTERATIONS** and sewing. Kirk Hauser. HE 8-0014. tf

**ALTERATIONS**, dressmaking. Diane. HE 9-5740. tf

**ALTERATIONS** and dressmaking. Call Irene. Four Corners, Delmar. HE 9-9257. tf

**ALTERATIONS**, expert, 24 hour service, reasonable pickup and delivery. HE 8-4611. 4t1020

#### AUTO UPHOLSTERING

**AUTO** upholstery; Antique cars a specialty. Bob's Auto Top Shop, rear 300 Delaware Avenue, Delmar. tf

#### BICYCLE REPAIRS

#### SCHWINN • RALEIGH BICYCLES



Parts and  
Accessories  
for

All American and English Bikes  
We repair all makes  
TRADE-INS

**Bennett's**  
SPORTING GOODS

561 Delaware Ave., Delmar, N.Y.

#### BLACKTOP

**LUIZZI BROS.**, Blacktop Paving: Parking lots, driveways, garage floors, sidewalks. Free estimates. 482-3484. tf

**CAPITAL PAVING SERVICE** — Blacktop, landscaping — topsoil. Free estimates, all work guaranteed. 434-4920. tf

#### BUILDING & CONTRACTING

**HOMES**, garages, remodeling, additions, "easy terms," Hogan Construction Co. IV 2-4693. tf

#### CARPENTRY

**REMODELING** — All types of carpenter work. H. A. Ertel, HE 9-1048, Ed Hehre, HE 9-1198. tf

**ADDITIONS**, remodeling, roofing, stairs, general repairs. Arthur Molle, HE 8-7165. tf

#### CARPETING

**NEED CARPET?** See a Hometown representative at LATHAM Rug Co., Carl Van Hoesen. Store ST 5-8521 Home HE 9-1485. tf

#### CLEANING SERVICE

**LOCHMOOR** Window Cleaning Co. Resident and office maintenance, complete. IV 9-0121 or 489-2474. tf

**HOUSE CLEANING**, window washing, floor maintenance, also any other cleaning you need. Old Holland Cleaning Service, Inc. RO 7-2739. tf

#### DOLL REPAIRING

**DOLLS** repaired, restrung, costuming. Reina Deitz. HE 8-1690. tf

#### DRIVER TRAINING

#### Albany Driving Academy

67A Edgewood Ave., Albany

Beginners - Intermediates

Brush-Up

CARS AVAILABLE FOR  
ROAD TESTS

Standard & Automatic

Call HO 2-1309

#### FUNERAL DIRECTORS

**M. W. TEBBUTT'S SONS**  
Albany Delmar

420 Kenwood Ave.

HE 9-2212

*Serving All Faiths  
For Over 100 Years*

#### FURNITURE REFINISHING

**FURNITURE** repairing, refinishing, re-upholstering. French. HE 4-0633. tf

#### FIREPLACE WOOD

**HARD**, seasoned fireplace wood. Call Albany IV 2-5231. tf

#### INSTRUCTIONS

**PIANO** instruction, Robert Pace Method. Registrations starting October 3rd. HE 9-2510 or 434-9095. 4t1013

#### LAWNMOWERS

**LAWNMOWERS** — SALES AND SERVICE. Hichie's Hardware, Delaware Avenue, Delmar. HE 9-9944. tf

**IMMEDIATE** repair: Lawnmowers, tillers. Call after 5 P. M., all day Saturday. HE 9-4873. tf

**SHARPENED**, repaired. Jacobsen Sales and Service. Rotors, Reels, Riders. Time payment plan available. M Gudz, 138 Elm Avenue, Delmar. HE 9-2025. tf

#### LIQJORS & WINES

**SLINGERLANDS** PACKAGE STORE. Complete line. Deliveries. Discount on case lots. Party

consultants. Open 10 A. M. to 10 P. M. Phone HE 9-4581. tf  
**O'ROURKE'S** Liquor Store, Corner Elm Avenue & Jericho Road. Selkirk. tf

#### MASON WORK

**EXPERIENCED**, all types masonry, new or repairs. Guidara. HE 9-1763 evenings. tf

#### MOVERS

**D. L. MOVERS**. Local and long distance moving. Reasonable rates. No job too small or too large. Dick Leonardo. HE 9-5210. tf

**HOUSEHOLD MOVING**, low rates, new equipment, experienced personnel, free maid service. Local moving. 465-1200. tf

**REFRIGERATORS** and appliances moved by local resident, reasonable rates. 439-1140 or 439-9805. tf

#### MIMEOGRAPHING SERVICE

**REASONABLE RATES** — Mimeographing - stencils cut - addressing - mailing, Delmar, N.Y. 439-3383. tf

#### ORIENTAL RUGS

**NEW AND USED**, in all sizes and colors at reasonable prices. Washing and repairing by native expert. Pickup and delivery. Free estimates. Rod Kermani. Stop 3, Albany-Schenectady Road. EX 3-6884 or IV 2-0457. tf

#### PAINTING & PAPERHANGING

**INTERIOR**, exterior painting. Free estimates. Guaranteed. Insured. Jim Vogel. HE 9-9718. tf

SPOTLIGHT CLASSIFIEDS TELL THE WORLD

## CARPET SALE

**ABBEEY**

Rug & Carpet Co.  
243 Dela. Ave. Delmar  
HE 9-9978

25 yrs. in every phase of the Carpet Business

**Back by Popular Demand!**  
*At the Beautiful, All New*

*Scandurra's* **LATIN CLUB**

—THE GREAT—  
**"PIANO"  
PASHA  
AND TRIO!**

Entertaining Nightly  
... Monday Thru Sat.

*"For Your Dining  
and Dancing Pleasure"*



Scandurra's offers you a selection of fine food, specializing in steaks, lobster and the area's best prime ribs! All of this served to you in a relaxing Latin-American atmosphere...

**SCANDURRA'S LATIN CLUB**

351 NEW KARNER ROAD, COLONIE  
Rt. 155 Bet. Western and Central Ave.

**INTERIOR** and exterior painting. Also carpentry work. Frank Salisbury. Days: HE 9-5527; nights: HE 9-1355. tf  
**DON VOGEL**, exterior — interior painting, paperhanging, fully insured. HE 4-2853, HE 4-8370. tf

### PAPERS

**SUNDAY NEW YORK PAPERS** delivered to your home. Phone 439-4711. 4t1020

### PERMANENT WAVING

**SPECIALIZING** in Breck, Realistic, Rayette and Caryl Richards permanents; hair tinting and bleaching. **MELE'S BEAUTY SALON**, Plaza Shopping Center. HE 9-4411. tf

### PIANOS

**PIANOS** — organs. Area's largest selection. **BROWN'S PIANO** — **ORGAN MART**. 459-5230. tf

### SCISSORS SHARPENED

**SCISSORS SHARPENED**, 6 pairs med. size, \$2.00 also pink shears, saws, hair clippers, lawnmowers, knives. Called for and delivered HE 9-3893. tf

### SEPTIC TANK SERVICE

**NORMANSKILL** Septic Tank Cleaners. We install dry wells, septic tanks, drain fields. 767-9287. tf

**DELMAR SANITARY CLEANERS** Serving Tri-Village area over 20 years. HE 9-1412. tf

Subscribe to the Spotlight

## Premiere Showing

3 Decorator Furnished  
**MODEL HOMES**  
 Priced from \$18,790  
**Open House**

1 P.M.  
 'TIL DARK



## SALEM HILLS

Voorheesville  
 HOW TO GET TO  
 SALEM HILLS

From Albany take Western Ave. (Rt. 20) turn left on State Farm Road (Rt. 155) to Maple Avenue, Voorheesville. Turn right and watch for our signs.  
 OR  
 From Albany take New Scotland Avenue (Rt. 85) to Maple Avenue (Rt. 85A). Turn right and proceed on Maple Avenue to Salem Hills, Voorheesville.

A Glenmont Development  
 Corporation Community  
 Exclusive Sales Agent

**Reiner Realty**  
 HO 5-4565  
 Albany, N. Y.

### TREE SERVICE

**HERM'S TREE SERVICE**: trimming and removal (insured). Call Albany, IV 2-5231. tf  
**BROWNIE'S** complete tree service and removal. Insured. Tree estimates. IV 2-5031. 5t1027

### VACUUM CLEANER SERVICE

**SUPERIOR** vacuum, Hoover sales, service all makes. Pick-up and delivery. IV 9-0905. 4t106

### WATCH REPAIRING

**EXPERT WATCH AND JEWELRY** repairs. Diamond setting, engraving wedding and engagement rings, reasonable. Your trusted jeweler, D. LeWanda, Delaware Plaza Shopping Center. HE 9-9685.

### WELDING

**FABRICATION** and general repairs to machinery and equipment. Michael Steel Fabricators and Welding Co., Glenmont, N.Y. HO 3-2775. tf

### MERCHANDISE FOR SALE

**ALUMINUM** combination windows, doors, siding, etc. Finest quality at lowest prices. Taylor Aluminum Products. RO 5-2856. tf

**ANTIQUES** bought and sold at the sign of the Coffee Mill. 67 Adams Pl., Delmar. HE 9-1021. tf

**FUEL OIL**: 2¢ per gal. cash discount. Academy Oil Service, Glenmont. 24-hour service. HO 2-1309, 485-5336. tf

**PIANOS — MASON & HAMLIN**, Knabe, Fischer, Weber and Stark, also fine selections of slightly used pianos. Call A. Andrew Gigliotti. HO 3-5223. tf

**DOTS!** Back to School with brand name sneakers and boots at discount prices. Regular hours 10 a.m. - 5:30 P.M., Tues. thru Sat. Wed. & Fri. 7 p.m. to 9 p.m. Consignment hours 10 a.m. to 2 p.m. only - Tues. thru Fri. 241 Delaware Ave., Delmar. tf

## FURNITURE

Our low-cost operation policy enables us to bring you **BIG SAVINGS** on **NEW** furniture, rugs, bedding, drapes.

**BURRICK FURNITURE**  
 560 Delaware Ave., Albany  
 Just across the Thruway Bridge  
 in Albany

Colonial  
 Acres



RT. 32, GLENMONT, N.Y.  
 A planned community of  
 early American homes.  
 PHONE HE 9-9231

**LOSE WEIGHT** safely with Dexa-Diet tablets only 98¢ at Warner Pharmacy. 8t113

**BAND Instruments**: for school students, on rental, optional purchase plan. Saxophone, clarinet, trumpet, trombone, flute, violin. John Keal's Modern Music Company. 434-5214. (Formerly Buckleys - 22 Central Ave., Albany) 7t1029

**ANTIQUES** — annual discount sale on regular stock now until closing about November 1st. Betty's Barn, New Scotland. 439-2278. 2t929

**10-PIECE** Maternity Wardrobe, size 8, \$25; Polaroid Land Camera, excellent condition, \$50. Round coffee table, light wood, \$5. 439-6533.

**RADIAL** saw, accessories. HE 9-3793 after 5 P.M.

**ANTIQUE FLEA MARKET SAT., OCTOBER 8 — 5 MILES EAST OF TROY, ROUTE N. Y. 7.**

**DINING** room set, mahogany, complete, excellent condition, \$300. HE 8-1261.

**WHITE** portable sewing machine, sews forward and reverse, attachments. 439-3114.

**HICKOK** vacuum tube Volt ohm meter model 125, GE Audio oscillator, other electronic testing equipment. HE 9-3860 after 5 p.m.

**OUTBOARD** motor, '63 Evinrude 5 1/2 HP with 8-gal. tank, limited sailboat use, \$160. Firm. 439-3686.

**GARAGE SALE** — on October 1st, 10-5 p.m., Feura Bush, Rt. 32, Albany side of Railroad Bridge.

**GUITAR** electric base, Fender strings, good condition, reasonable. 439-3080.

**SHOP SMITH** model 10ER multipurpose powered tool complete with accessories and Delta Homecraft, 10" band saw firm \$225. Call HE 9-5170.

**CHAIR** caning, rush and reed seats. 2 Grove Street, Delmar. HE 9-3523. 2t106

**ANTIQUE** Empire cherry buffet; green overstuffed chair and ottoman. 439-5730.

**KITCHEN** set, formica top table, expansion leaf, 4 chairs, reasonable. 489-3550.

**PIANO**, used, apartment size, upright, very good condition. Call 439-5890 after 5:30.

**COLONIAL** dining room set, mahogany, 6 chairs, lowboy, drop leaf table 42 x 60, 2 leaves, table pads. Phone after 6 p.m. HE 9-1096.

**GARAGE SALE** — October 1st - 10 to 4 p.m., 46 St. Clair Dr., Delmar — over 100 fiction novels, some paper backs too. Mahogany coffee table, pair club chairs, linens, blankets, costume jewelry, Hong-Kong formal size 14, fox stole, draperies, twin beds, pair chests, drop leaf mahogany library table.

**SPOTS** before your eyes — on your new carpet — remove them with Blue Lustre. Rent electric shampooer \$1. Adams Hardware, 380 Delaware Ave., Delmar.

**MIMEOGRAPHING**, typing, secretarial work, complete mailings, pick up and delivery. Marion B. Hatch, Voorheesville. 765-2254. 2t106

**GARAGE SALE** — Sat., Oct. 1, 10 to 5 p.m., Hepplewhite china closet, two boy's bicycles, trampoline, books, crib, carriage, other baby equipment, misc. items. 1478 N. Scotland Road, Slingerlands.

**BARN SALE** — Household goods — Thursday and Friday, September 29th and 30th all day. 6 Herber Avenue, Elmsere.

**HAVE MOVED**. Must sell 1963 Mobile Home. Three bedrooms, patio,

set up on corner lot in beautiful park, many extras. Call 756-9204. 2t106

**BEAUTIFUL** antique silk homemade quilt, excellent condition, \$35. HE 9-5170.

### AUTOMOTIVE FOR SALE



Saab Authorized Dealer

### NEW SALEM GARAGE

New Salem Route 85  
 DeWitt and Fred Carl  
 — NEW AND USED CARS —  
 Telephone RO 5-2702

**1965** Triumph, 650 CC, excellent condition. HE 8-1261.

**VESPA** Scooter, 125 CC, \$175. Call HE 9-4745.

**1957** Chevrolet Belair two-door hard-top, good running condition, \$50. Original owner. 439-6568.

**1965** Honda 50, electric starter, luggage rack, good condition, \$150. HE 9-6185.

### PETS

**FOR** expert dog grooming, call Judy. HE 6-1445. tf

**"DOG BY DONNA,"** professional grooming. Home pick-up — delivery. HE 6-1035 or HO 5-3601. 10t922

**RABBITS** for sale — Phone 767-3813.

**FREE** puppies, 5 weeks, 1 female, 4 males. 439-6563. 2t929

### REAL ESTATE FOR RENT

**OFFICES** or store space available 450 to 3,000 square feet, heated, air conditioned. Driftwood Building. HE 9-1468. tf



Let

**De L. Palmer**  
 Incorporated

take the question mark out  
 of selling property.

Call HE 4-0181

**OFFICE SPACE** In Colonial House Professional Building, 230 Delaware Avenue, Elsmere. HE 9-5173, HE 9-2957. 41106

**GARAGE**, Four Corners, Delmar, \$8 per month. HE 8-1261.

**\$125** — Delmar, modern 1 bedroom apartment, fireplace, heated electric, etc. HE 9-1468.

**THREE-room bungalow**, bath, range, in Delmar, \$65. 439-5614.

### HELP WANTED

**D.L. MOVERS**, furniture and appliance helper, full time, high wages. HE 9-5210. tf

**SALES LADIES** wanted, full and part time, evenings. Apply: manager Little Folks Shop, Delaware Plaza, Delmar. 21929

**MAIL CLERK** — We wish to train a young man to run our Supply and mail operation. To qualify, applicant should be willing to learn. Car helpful but not essential. For interview, call FARM FAMILY INSURANCE COMPANY, GLENMONT. 438-9751.

**BABY** sitter, one afternoon a week, Elsmere area. 439-6192.

**"AVON CALLING"** for Christmas. Openings available in Tri-Village. Call Mrs. Calisto, ST 5-9857. 21106

**HOUSEKEEPER**, 6 days week, one in family, own transportation. HE 9-1530. tf

**SALESLADY** — Apply Toy Fair, Delaware Plaza. 439-5035.

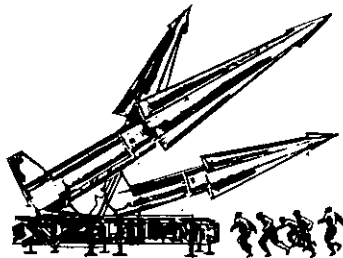
**KITCHEN** helper, male or female, part or full time. Delmar Tavern. HE 9-9810 or HE 8-1261.

### SITUATIONS WANTED

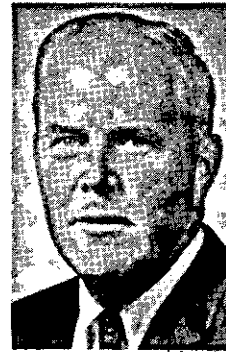
**BABYSITTING**, my home, by day or week. Call 768-2051.

**CHILD CARE**, my home, days, experienced. Slingerlands. HE 9-9745 after 5 P.M.

### MEET THE CHALLENGE!



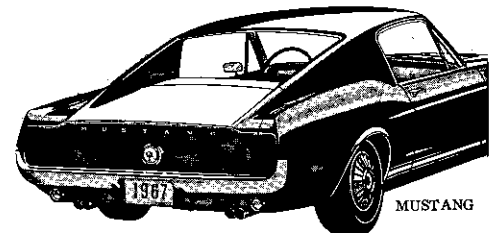
SERVE WITH PRIDE IN  
THE NATIONAL GUARD



*Ed Tobin invites  
you to see  
the ALL new*

**1967 FORDS . .**

**FALCON,  
FAIRLANE,  
MUSTANG,  
T-BIRD**



**NOW ON DISPLAY**

BUY LOW AT

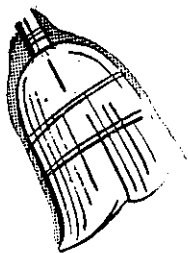
**CRAILO**

EAST GREENBUSH — GR 7-9302



at **ALBANY DODGE . . . it's**

**NOW**



**CLEAN  
OUT  
TIME!**

**OVER 175 CARS**

TO CHOOSE FROM

**1966 DODGES**

**DARTS — CHARGER — POLARA**

**CORONET — MONACO**

**LOW—LOW PAYMENTS—ASK US**

**COME IN—WE WANT YOUR BUSINESS**

**ALBANY DODGE INC.**

**949 Central Ave.**

**JUST ABOVE  
WESTGATE**

OPEN MON. THRU THURS. 'TIL 9 P.M.; FRI. & SAT. 'TIL 6 P.M.

**All Roads Lead To Hallmans'!**

**WE'LL REACH FOR ANY DEAL!!**



**MARSH HALLMAN HAS THE  
LARGEST SELECTION**

of NEW

**1966 CHEVROLETS**

IN THE ENTIRE CAPITAL DISTRICT

**\* WE'LL MAKE THAT IMPOSSIBLE DEAL!**

\* All Ready for Immediate Delivery

\* No Payments Till Late Spring

**MARSH HALLMAN  
CHEVROLET, Inc.**

**781 CENTRAL IV 9-5551**

Open Daily 'Til 9 P. M. Friday-Saturday 'Til 6 P. M.

**Where More People Buy For Less!**



Open 'til 9

LAST THREE DAYS!

# Save! Save!

On Our  
**81st ANNIVERSARY**

SALE ENDS SATURDAY, OCT. 1 (Both Stores)

our famous  
Friedman-Marks

## 2-PANTS SUIT

tailored exclusively for  
Steefel's

reg. 79.95 **63.97**



- ALL 100% WOOL WORSTEDS
- 2 & 3 BUTTON MODELS
- ALL NEWEST '66 SHADES
- SIZES IN REGULARS, SHORTS, LONGS

regular-weight  
**MEN'S SUITS**

**49.97**

reg. 65.00  
sizes in regulars,  
shorts and longs

Nat'l known make  
**MEN'S  
SPORT SHIRTS**  
**3.39 OR 3/10.00**

reg. 5.00 to 6.00

Regular & button-  
down collars, assort-  
ed colors and patterns

sizes S-M-L-XL, all  
long-sleeved.

**MANY OTHER STOREWIDE SAVINGS!!!**

**That Stunning  
New Hairdo Can  
Belong to You!**

The pretty results  
of a permanent; the  
unexpected charm of  
a new hair color . . . our  
operators are trained to  
bring out the best you.



**Mele's Beauty Salon**

11 Delaware Plaza

HE 9-4411

**JULES SHOES**

## End Of Month SPECIALS

- 3 DAYS ONLY -

**30% OFF**

**MEN'S and BOYS'  
DISCONTINUED SHOES**

- ODDS and ENDS -  
Children's Poll Parrot

**1/2 Price****WOMEN'S SHOE BOOTS****10% OFF**

**Jules Shoes**

**WESTGATE SHOPPING CENTER**

Permit No. 10  
**PAID**  
U. S. POSTAGE  
Bulk Rate

