

# The Spotlight

VOL. XI, NO. 45

NOVEMBER 10, 1966

\$1.00 PER YEAR

10¢ A COPY

## EDUCATION WEEK REPORT

# BCTA Membership Study

In 1965, with over two hundred and fifty members in the Bethlehem Central Teachers' Association, this professional organization realized problems characteristic of any enlarged group. Lines of communication had partially broken down. Some of the purposes which had once been meaningful and worthwhile had become outdated. It was time to take a careful look at the existing structure, retain the good, and provide changes which would strengthen BCTA. It was evident that teachers were concerned with both the purpose of their organization and with themselves as professional people and members of the community.

For these reasons the BCTA constitution was completely rewritten and in the school year 1965-1966 a new organization emerged. As a result, an inner-school communication system now keeps members in closer touch with school policy, curriculum change — with any decisions which directly affect teachers and their work. The Association's Representative Council occasionally meets with the Board of Education and confers regularly with Dr. Richard Moomaw, Superintendent of Schools. Representatives return to their schools to discuss with faculty members any findings or decisions of the Council. They then return to the Council with teacher reactions and suggestions. As a result BCTA members are not only better informed on association matters, but they have become more involved in many aspects of the school program.

Members of the association next felt that they should take a better look at themselves.

For this purpose a questionnaire was designed. Two large areas were considered, participation of members in the life of the community and professional growth and involvement.

To date, 80% of the questionnaires have been completed and returned. Current results indicate that 75% of these teachers live in the Bethlehem District. Although many of those who live out of the district do participate in community affairs, the figures shown here are based upon answers from local residents.

Nearly 75% of the teachers living in the Bethlehem District are involved in one, two, or possibly three community action groups. These do not include their extensive work with youth (Scouts, Little League, etc.) or personal recreation. 69 wives or husbands of teachers are also actively engaged in community groups. 38 serve as leaders in youth recreation.

Comments on the questionnaire indicate, that teachers find relaxation in adult recreational groups. They feel, too, that meeting people outside their own field gives them a better understanding of the community.

What of professional growth and involvement? Of the 200 teachers responding to the questionnaire, twenty were recipients of study or study-travel grants in the summer of 1966. Areas ranged from oceanography to archaeology, from Russian to data processing. Each of these people brought back to the district broader knowledge, deeper understanding of their study area. These they share with fellow teachers and with students.

Bethlehem teachers who tra-

(Continued on Page 2)



**DAISY MAE IS COMING** — The Senior Class play at BCHS this year will be L'il Abner to be presented Friday and Saturday evenings, November 18 and 19 at 8:15, with a 2 p.m. matinee on Saturday. Pictured above, left to right: Herb Mayne as L'il Abner; Pam Craft as Mammy Yokum; Paul Spellman as Pappy Yokum.



**MEETING THE TOP MAN** — When these students of Mrs. Hermann's Delmar Elementary School 2nd Grade went on a tour of Town Hall, they wound up in Supervisor Kohinke's office for a question and answer period on town government. Left to right: Roger Miller, Tom Treiling, Pat Sullivan, Supervisor Kohinke, Alan MacLean, Nancy Day, Linda Veldhuis and Sandra Gibson.



**HAPPY TRIO** — Everyone had fun at the recent Wine Testing Festival at the new Elsmerian Restaurant at Delaware Plaza. Those who attended saw a "new" restaurant due to the fact that it has been completely redecorated from top to bottom. Pleased as punch (Wine, that is!) were, from left to right: Matthew Whalen with his two Mixologists, William McClune and Vincent Caccamo.

# LONGINES

THE WORLD'S  
MOST HONORED  
WATCH

## *For Christmas Giving...*

What better way to say "Merry Christmas" than with a masterpiece of the watchmaker's art from Longines. Here are two from our wide selection, all styled with contemporary elegance, all impeccably crafted, all built with the care and perfection that give a world-honored Longines watch its matchless beauty.

HERS: the beauty of a perfect circle in solid 14K gold with synthetic sapphire crystal, \$125.

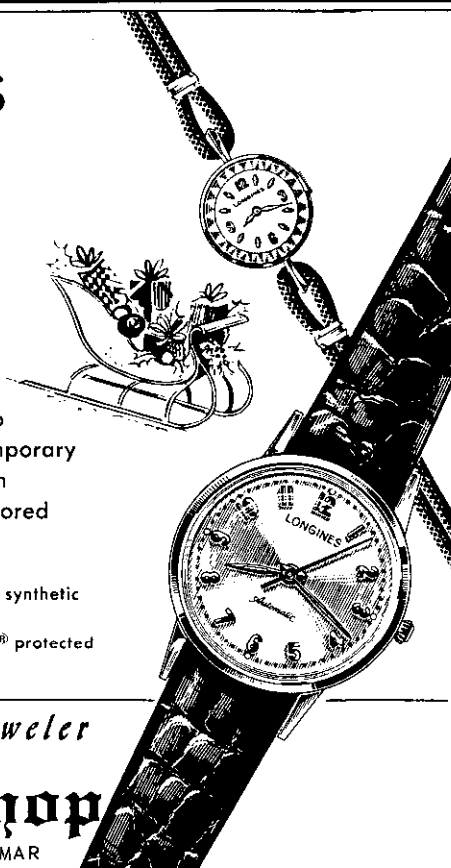
HIS: an automatic watch that needs no winding, All-Proof® protected against moisture, dust, shock, \$110.

**HARRY L. BROWN** *Jeweler*

**Thistle Gift Shop**

363 DELAWARE AVENUE AT 4 CORNERS, DELMAR

FRANCHISED JEWELER FOR LONGINES & WITNAUER WATCHES



### MEMBERSHIP STUDY (Cont'd.)

veled became students seeking information and answers. "I was like the fire-horse always looking for the fire," said Miss Clarissa Smith of the Guidance Department. "I was always searching out schools." Her experiences ranged from visiting a Peruvian one-room, one porch school which housed four classes, to the modern National Science High School. It was here that she discovered how quickly stilted English statements, "I am a student of English. I also speak Spanish," became fluent when the boys wanted to know about girls in the United States. "I was struck with the universality of youth," she said.

Dominick DeCecco was also impressed with the universality of people and their reactions. "Their Asian 'Asianess' disappeared as I became more familiar with the people. They are like us — or we are like them." Miss Smith, Mr. DeCecco and the other 23 teachers who traveled abroad extended their own horizons through travel and have



The Average Family Of Four Uses  
80 Gallons Of Hot Water Per Day



*Do You Have Enough Hot Water In Your Home?*

*Do You Have Hot Water When You Want It?*

**... If Either Answer Is NO, Let Main-Care Solve Your  
Dilemma For An Amazingly Low Cost**

Main-Care means "We Care"



318 DELAWARE AVENUE



come back to the district to serve as resource people. They have slides, artifacts, costumes, and understanding to share with teachers and students of Bethlehem.

Perhaps the most involved member of the Bethlehem Central Teachers' Association, at least at the State level, is Miss Gladys Newell. Miss Newell is candidate for President of the New York State Teachers' Association. Eight other members serve in various capacities in NYSTA.

Members of the association are active in professional organizations. In addition to 100% membership in BCTA and NYSTA, 166 teachers belong to the National Education Association. 112 members belong to additional organizations ranging from 1 affiliation to 7.

These are only a few of the

findings of the Bethlehem Central Teacher's Association study of its membership. Under the leadership of Richard Robinson, President, this organization will continue to evaluate and re-evaluate its place in the educational and communal programs of Bethlehem.

## Meeting

The regular meeting of the Ladies' Auxiliary of the Delmar Fire Department will be held at the Fire Hall tonight (November 10) at 8.

## Party and Show

The Mothers' Association of the Albany Academy for Girls will conduct its annual Harvest Festival, Wednesday, November 16, at the school. Co-chairman of this year's event are Mrs.

**TREAT YOURSELF  
to the BEST in the  
WORLD OF MUSIC**

**THE ALLEN ORGAN  
THE INCOMPARABLE  
STEINWAY PIANO**

An electronic organ should sound like an organ . . . but surprisingly some do not. Traditional organ tone was expensive to achieve but today ALLEN offers organ tone quality for every requirement, in every price range.

Concert programs tell us the Steinway is, almost without exception, the choice of the world's celebrated pianists. Small wonder. Only Steinway has the tone, intuitive response and technical supremacy these musical artists require. Only the Steinway sounds like a Steinway — at concerts or at home.

These instruments may be seen demonstrated, and played at

**ALLEN ORGAN STUDIOS  
1444 State Street  
Schenectady, New York 12304**

## L. J. MULLEN AT YOUR SERVICE

- Open a full 12-hour day every day of the year
- 24-hour Prescription emergency exchange
- Family Prescription record for Tax, insurance, etc.
- Prompt free delivery anytime (7 days a week)
- Delivery to

Glenmont

Slingerlands

Delmar

and of course

Elsmere

**L. J. MULLEN PHARMACY**

256 Delaware Avenue

Elsmere, New York

439-9356

Never a busy signal

# Come to our Bethlehem Office. You might leave with a Polar Bear.

City & County Savings Bank's Bethlehem branch is just over five years old, and approaching the \$10,000,000 mark in deposits.

If your next deposit puts us over that mark, you get the giant plush polar bear.

If it doesn't, you'll still receive a 5% dividend on your savings.\* Just like 5,361 of your neighbors do — at the only savings bank in the community.

Walk in, or drive up. See one of our friendly Bethlehem office employees. Add to

your savings account or open one. Do it at just the right time, and you'll have something extra to show for it — *besides* your passbook.

\*4½% a year regular, plus ½% extra anticipated.

## City & County Savings Bank

Your Community Bank

Member Federal Deposit Insurance Corporation

### Bethlehem Office

163 Delaware Avenue  
Opposite Delaware Plaza  
Delmar, New York 12054



J. Albert Holbritten and Mrs. Samuel S. Verbeck.

The program beginning at 1 p.m. will include a card party, tea, and fashion show by Macy's. On sale will be baked goods at the Country Store and hand made items at the Boutique.

In charge of committees are Mrs. Noel S. Bennett, Jr. Properties; Mrs. Joseph J. Jaycox, and Mrs. Sidney J. Stein, Jr. Tickets; Mrs. Eugene S. Robb, Prizes; Mrs. Richard F. Sonnenborn, Decorations; Mrs. Albert Hessberg II, Mrs. John G. Underhill, and Mrs. John H.P. Holden, Boutique; Mrs. Roland A. Allen and Mrs. Charles E. Hughes, Country Store; Mrs. Jack Spitalny and Mrs. Joseph H. Mann, Jr. Fashion Show; Mrs. Harold C. Williams Treasurer, and Mrs. John P. Hawn Publicity.

At School

Hugh J. Brown, the Automatic Data Processing Teacher, and Miss Patricia R. Rock, Senior Account Clerk, both on the staff at Bethlehem Central Senior

High School, attended a special school October 25-27, sponsored by IBM.

The Workshop, which was taught by Lou Young, Sales Department representative of IBM, was held at the IBM Data Processing Division, 121 State Street, Albany, and featured information on the machine functions and wiring of the IBM 402 Accounting Machines.

On Wednesday evening, October 26, Mr. Brown also attended a workshop session at the State Education Department, called by Hobart Conover, of the Business Education Staff of the Department. At this meeting representatives from the local high schools, the State University of Albany and the local BOCES staff discussed the activities in Data Processing in the local schools in an effort to assist with future planning.

Mr. Brown is currently teaching the first Data Processing Course at Bethlehem Central, and conducting an In-Service Workshop monthly with the Business Education faculty.

# LADIES! DIRTY CAR?

Try our **WEDNESDAY SHOPPERS' SPECIAL**

## Your Car WASHED & TOWEL DRIED \$1.25

**WET WASH – 75¢**

### BETHLEHEM AUTO LAUNDRY

ROUTE 9-W SOUTH OF DELMAR BY-PASS  
(Offer Void Before Holidays)

# GRAND OPENING

## November 14, 1966

## 9:00 A.M.


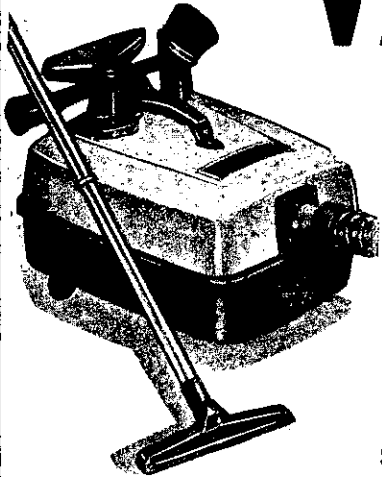
# Turner VACUUM SERVICE

261 DELAWARE AVENUE, DELMAR, N.Y.  
PHONE HE 9-6424

Do you have a Vacuum Cleaner problem? See us. Parts and service on most makes and models.

SALES: Rebuilt Cleaners and New Cleaners.

**STORE HOURS:** Tues., Wed., Thurs. and Fri: 2 P.M. to 9 P.M. – Mon. and Sat: 9 A.M. to 5 P.M.



# TALL TIMBER

## GOLF AND BEACH CLUB

Now booking private and organizational parties from 50 to 180 in our beautiful new "GOURMET and HEARTH-STONE ROOMS." Menus on request. Tel. HE 9-3392

HILTON ROAD SLINGERLANDS, N. Y. TELEPHONE HE 9-3392

## New Chairman

Elections held at the 3rd Annual Meeting of the Instalment Credit Division of The New York State Bankers Association on October 7 brought the following slate of officers to the helm of the Division: Chairman, Harold R. Moore, senior vice president, National Commercial Bank and Trust Company, Albany; and Vice Chairman, John J. Reynolds, vice president, First National City Bank, New York City, Howard W. McCall, Jr., president of the New York State Bankers Association and president, Chemical Bank New York Trust Company, announced today.

This election took place at a two day meeting of the New York State Bankers Association held at the Statler Hilton Hotel, Buffalo, New York.

Mr. Moore is a graduate of Poly Prep Country Day School, Brooklyn, class of 1921, and Catholic University, Washington, D.C., class of 1925. He began his banking career in December 1945, following a long career with General Motors Acceptance Corporation.

Mr. Moore has an extremely wide background in instalment credit banking and is presently a director of the Instalment Credit Division of the New York State Bankers Association; former vice chairman of the Instalment Credit Division, New York State Bankers Association; former chairman, Advisory Board to Instalment Credit Committee for the second Federal District, American Bankers Association; and a former member of the Instalment Credit Committee, American Bankers Association.

Long active in civic affairs, Mr. Moore is a director and executive committee member of the Albany Community Chest, president, Northeastern New York Chapter - Catholic University Alumni Association; a member of the Greater Albany Area Chamber of Commerce; a director of the West End Federal Savings and Loan Association; director and treasurer of the



## Kelvinator

# COPPER

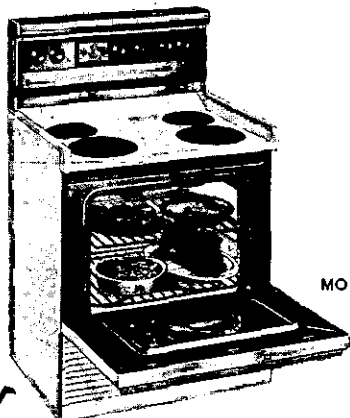
# COLOR SALE

## HURRY! SPECIAL ONCE-A-YEAR PRICES!

## COMPARE ANYWHERE!

### CLEANING FEATURES

1. Throw-away oven linings - 2. Lift-off oven door - 3. Lift-up, stay-up bake unit - 4. Easy under-range cleaning - 5. Removable surface units - 6. Removable drip pans and trim rings - 7. Secondary spill-over tray - 8. Spill-protected top with raised rim



MODEL RF 383 SHOWN

Deluxe Quality

## KELVINATOR 30"

Electric Range

### COOKING FEATURES

- A. Automatic Oven Timer with Clock - B. Lighted Backguard - C. High-speed Surface Units - D. New Easy-to-use Controls - E. Pan-O-Matic Unit - F. Convenient, recessed Top - G. Grounded Appliance Outlet - H. Signal Lights - I. Adjustable Heat Broiling - J. Fast Oven Preheat - K. "Even-Heat-Flow" Oven - L. Broiler-Roaster Pan - M. Full Width Storage Drawer.

Prices start at

# \$188.00

FREE Turkey with every Range!

# LIMITED TIME ONLY!

## HELEN'S STAR SUPERMARKET

John Crosier  
Proprietor

East Berne, N.Y.

Phone 872-1568

"Try the Popular"

## La Casa RESTAURANT

Selkirk, New York  
(Formerly Altieris)

- Specializing In -  
ITALIAN-AMERICAN FOODS

Famous for Delicious  
SEA FOODS!

Banquets - Private Parties  
Weddings - Showers

Open daily from 11:30 A.M.-10  
(Closed Mondays)

All Legal Beverages

Take Out Orders

CALL RO 7-9045

Tracey Foundation; and a member of the Albany Country Club, Fort Orange Club, and the University Club.

Mr. and Mrs. Moore are members of St. Thomas Church, Delmar and have three grown sons, Harold R., Jr., Thomas J., II, and John H. Moore. Mr. and Mrs. Moore make their residence at 95 Fernbank Avenue, Delmar.

## Table Talk

How do children feel about the clothes they wear? This is

one of the topics that will be discussed on the November 16 Table Talk program. Miss Jane Meister, Extension Home Economist in Rensselaer County, will hostess the show.

Miss Meister and her guest, Mrs. John Reid from Averill Park, will talk about comfort and care factors of children's clothing, the best size to choose, and the importance of buying clothes that make it easy for the child to dress himself.

Table Talk is a weekly program shown Wednesday mornings at 7:30 on WAST-TV, channel 13. Extension Home Economists from Albany, Columbia, Greene, Rensselaer, Saratoga, Schenectady, Warren, and Washington Counties participate in the program.

## 4 Accepted

Four area students were formally received into the Freshman Class at The College of St. Rose in Albany in a ceremony vesting them in cap and gown.

They are: Miss Kathleen A. Holm, daughter of Mr. and Mrs. Earl Holm of 504 Delaware Avenue; Miss Patricia M. Lynch, daughter of Mr. and Mrs. Daniel Lynch of 14 Hawthorne Avenue; Miss Jeanne C. O'Brien, daughter of Mrs. Alma O'Brien of 22 Euclid Avenue; and Miss Loretta A. Preska, daughter of Mr. and Mrs. Victor Preska of Van Dyke Road.

## Wanderer

Wanderlust hits us all sooner or later. The Delmar Public Library bookmobile is no exception. Furthermore it loves to see its name in print. Probably that first long trip to Russia several years ago and the accompanying publicity was the start of all this. So every time it is invited to go on an exhibition tour, off goes the bus loaded with books.

Last summer the GEX parking lot was visited four times. And on Wednesday, November 2, the bookmobile set off for a trip to the Helderbergs to visit the boys and girls in the second and third grades at the Berne-Knox school. They have already visited a real library. Now they

**McGREGOR.**  
HAS THE YOUNG IDEAS



*season ticket to winter comfort*

**NORDIC VIKING**  
by McGREGOR

Go to all the games the pro way in America's most popular toggle coat. It's McGregor's great tackle-tough coat that absolutely tames the wind and keeps out the cold. Smart sporty styling in 65% Dacron\*, 35% cotton with a warm block quilt lining and detachable hood.

\*DuPont Reg. T.M.

in Loden or Cement **\$40**

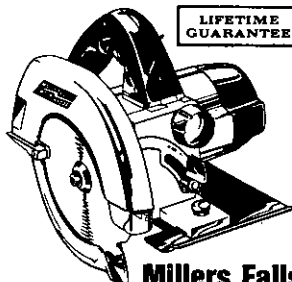
*Paul Mitchell's*  
**MEN'S WEAR**

**99 DELAWARE AVENUE**  
**ELSMERE, N.Y.**  
Phone 439-3218

Convenient  
Layaway



**SAFE**  
for On-Site Use



**Millers Falls**  
**Shock Proof Heavy Duty**  
**BUILDERS SAW**

YOUR BEST  
BUY FROM **\$65.00**

- 3 sizes to choose from  
6½", 7¼", 8¼"
- Double insulation keeps you safe from electric shock, costs nothing extra.
- Ends nuisance of grounding or finding a dry footing.
- Stall-proof drive safeguards motor and operator.
- Sawdust chute keeps cutting line clear.
- High velocity cooling system and ball bearings for continuous all-day use.
- Exclusive See-Through Safety Guard and other new features.

**PRO** *Delmar*  
**LUMBER &**  
**BUILDERS' SUPPLY, INC.**  
**HE. 9-9968** WE DELIVER  
340 DELAWARE AVE DELMAR N.Y.

## FOWLER'S Liquor Store

See ERNIE or GEORGE  
for BETTER SPIRITS



Elsmere - at - the - Light  
Parking right in front of store.  
HE 9-2613 "We deliver."

Chilled, ready-to-serve  
WINES & CHAMPAGNES

saw how a traveling library operates. After all this first week of November was National Education Week and one thing the bookmobile promotes is an interest in all things educational as well as recreational.

## Meeting

Tawasentha Chapter, DAR, will observe National Education month with a meeting Saturday

morning, November 19, at the home of Mrs. Murray O. Klingaman, 31 Roweland Avenue, Delmar.

Coffee will be served at 10.

## Country Fair

The Women's Guild of St. Stephen's Episcopal Church, Delmar, New York, will hold its annual Country Fair on Wednesday and Thursday, November 16

and 17, from 10:00 a.m. to 9:00 p.m. each day.

Co-chairman of The Country Fair are Mrs. William S. Eliot and Mrs. Edmund A. Steere.

Luncheons will be served each day from 11:30 a.m. to 1:00 p.m. On Wednesday night there will be a roast beef dinner - two servings - at 5:30 and 6:30 p.m. Special features on Thursday, November 17, will include a Desert Card Party at 1:45 p.m. and

# CARPET SALE

## BEAUTIFUL ACRILAN CARPETING

COMPLETELY INSTALLED over heavy  
foam rubber. Reg. \$15.25 sq. yd.  
NOW SALE PRICED AT JUST

# \$12.50

Per Square Yard

## "501" CONTINUOUS FILAMENT NYLON CARPETING

COMPLETELY INSTALLED over heavy  
foam rubber. Reg. \$12.70 sq. yd.  
NOW SALE PRICED AT JUST

# \$8.95

Per Square Yard

The happiest people in the  
Delmar area are those who've  
purchased their carpet and  
rugs from

ABBEY RUG CO.



*The Magic of  
Masland Carpets.*  
C. H. MASLAND & SONS • Carlisle, Pa.

The only store that GUARANTEES ITS  
INSTALLATION FOR THE LIFE OF  
THE CARPET! NO MONEY DOWN -  
3 YEARS TO PAY!

Open Mon. & Wed. 9 to 9 - Balance of  
week 9 to 5, including Saturday.

## BEAUTIFUL WOOL CARPETING

COMPLETELY INSTALLED over heavy  
foam rubber. Reg. \$15.25 sq. yd.  
NOW SALE PRICED AT JUST

# \$12.50

Per Square Yard

## HERCULON CARPETING

COMPLETELY INSTALLED. Reg.  
\$12.70 sq. yd.  
NOW SALE PRICED AT JUST

# \$8.95

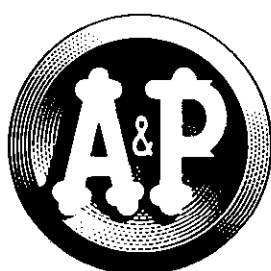
Per Square Yard

27 YEARS IN EVERY  
PHASE OF THE  
CARPET BUSINESS!  
You can be sure Mr. Fraim  
will help you select the best  
for your home.

# ABBEY RUG & CARPET CO.

243 Delaware Avenue, Delmar, New York - HE 9-9978





# A practical gift, That's practically perfect

To some, a practical gift  
is as welcome as a rainy weekend.  
To others, it's just the right answer.

Here's a practical gift, that's practically perfect:  
an A&P Gift Certificate.

A handsome certificate with a mailing envelope,  
available in all A&P stores all year long.  
Offered in \$5 and \$10 denominations, these gift certificates  
will be honored in any A&P store in the United States.

When you think about it,  
practically anyone who buys food would welcome it.  
And here's the best part—no one can ever get too many of them.

COPYRIGHT © 1966, THE GREAT ATLANTIC & PACIFIC TEA CO., INC.

- MARGARINE

NUTLEY QUARTERS 5 lbs.

89c

Solid Print 2 lb.

35c
- GRAPE FRUIT JUICE

A&P Brand 3 1 qt. 14 oz. cans

\$1.00
- STRAWBERRY PRESERVES

Jessica 2 lb. jar

59c
- BATHROOM TISSUE

Soft Ply Pkg. of 4 Rolls

33c
- PAPER TOWELS

2 roll pkg.

35c

Jiffy BISCUIT MIX 2 lb. 8 oz. pkg.

35c
- TOMATOES

Contadina Diced 3 1 lb. 12 oz. cans

\$1.

Jane Parker Lemon or PEACH PIE 2 1 lb. 8 oz. pies

99c
- ENGLISH MUFFINS

Jane Parker pkg.

25c

Cap'n. Johns Frozen SCALLOP DINNER 8 oz. pkg.

55c
- ICE CREAM

Marvel Vanilla 1/2 Gal. Pkg.

65c
- PINEAPPLE JUICE

A&P Grade A 4 1 qt. 14 oz. cans

99c
- DOG FOOD

Ideal 6 1 lb. cans

89c

## Down-To-Earth Low Prices ... Plaid Stamps and

### WIN \$1000





Mrs. Patty Crannell  
R. D. 2  
Glens Falls, N. Y.

**\$1000 WINNER**

#### MORE \$1000 WINNERS


Miss Shirley Marsche, Feura Bush  
Mrs. N. LaBombard, Schenectady  
Mrs. H. Morris, Poughkeepsie  
Mrs. S. Ducharme, Chazy  
Mr. Thomas Powers, Albany  
Mrs. Jennie Geiger, Delmar

#### \$100 WINNERS

Mrs. E. Parrish, Morrisonville  
Alice Auriemme, Amsterdam  
Mr. F. Labriola, West Albany  
Mrs. E. Goudreau, Vergennes, Vt.  
Mr. W. Hobbs, Vergennes, Vt.  
Katherine Sardar, Red Hook  
Mr. H. G. Connon, Ballston Spa

#### G.E. Color T.V. WINNERS

Mrs. W. Ackerman, Schenectady  
Jean Wichmann, Chatham  
Mrs. M. Rutherford, Ft. Edward



Adeline Smith  
R. D. 1  
Brant Lake, N. Y.

**\$100 WINNER**



Mrs. Francis Edwards  
79 Mill St.  
Rhinebeck, N. Y.

**\$100 WINNER**

## A&P PASSES THE SAVINGS ON TO YOU!

"Super Right"

# ROUND ROAST

NONE PRICED HIGHER

- Super-Right Boneless

EYE OF ROUND

lb. 1.29
- Super-Right Fresh

SPARE RIB

lb. 49c
- Super-Right in Chunk

LIVERWURST

lb. 59c
- U. S. Govt. Inspected for Wholesomeness

Chicken Quarters Breast or Leg lb.

38c
- Super-Right Boneless

CROSS RIB ROAST

lb. 89c
- Fancy

SWORDFISH Sliced

lb. 79c

BONELESS

TOP OR  
BOTTOM

# 89c

LB.

LAST YEARS PRICE 99c lb.

NONE PRICED  
HIGHER

## FRESH PICNICS

LAST YEARS PRICE 49c PORK SHOULDER lb. 39c

Tasty Pickin's—Fresh Produce!

- Fresh, Green

CABBAGE

lb. 10c
- California

FRESH DATES

10 oz. 39c
- Florida Large Seedless

GRAPEFRUIT

3 for 29c
- Hot House

TOMATOES

lb. 39c

FRESH FLORIDA

Orange Juice

1/2 Gallon Bottle 65c

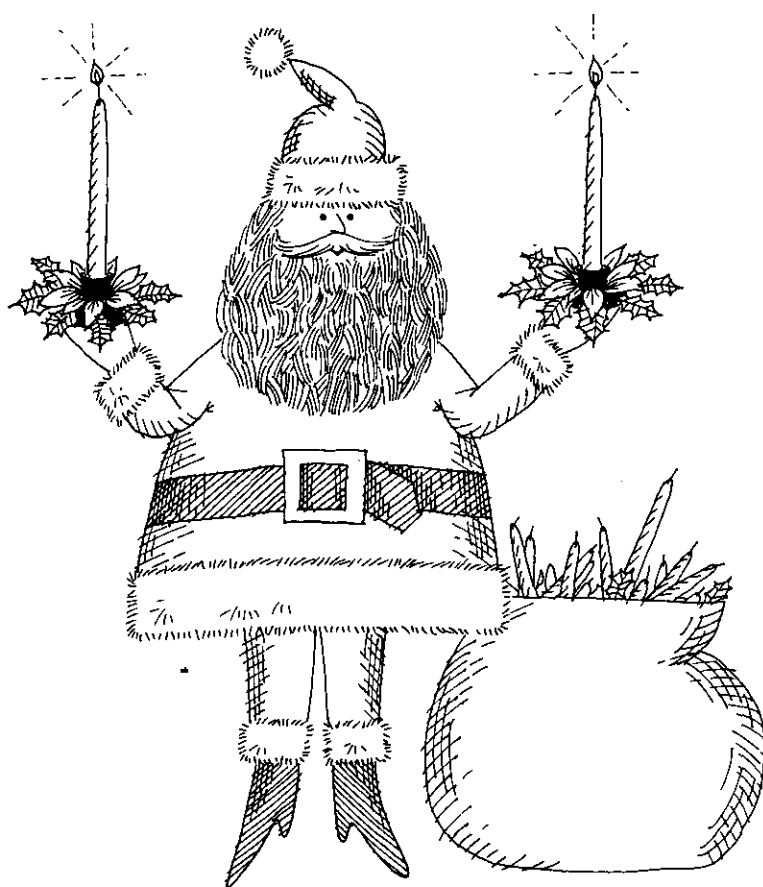
Green Diamonds

Walnut Meats

lb. pkg. \$1.09

# A GIFT for new Christmas Club members

Add a cheery accent to your home with a pair of gay, red candles in poinsettia holders. They're yours just for joining National Commercial's new Christmas Club. Thousands of thrifty people each year use this pleasant, easy way to prepay holiday expenses. Join now . . . you'll be glad you did.



DELMAR

BECKERS CORNERS  
Mondays, Wednesdays  
9 to 11 a.m.

ELSMERE

BERNE  
Tuesdays, Fridays  
3 to 5 p.m.

WESTERLO  
Mondays, Wednesdays  
Noon to 2 p.m.

YOUR CHOICE OF CHRISTMAS CLUB PLANS	
50 weekly deposits of:	bring next November:
\$1.....	\$50
2.....	100
3.....	150
5.....	250
10.....	500



NATIONAL  
COMMERCIAL BANK  
AND TRUST COMPANY

MEMBER FEDERAL DEPOSIT INSURANCE CORPORATION

FULL SERVICE BANKING through more than 50 offices in Northeastern New York



CHEF — James Kennedy of St. Stephen's Episcopal Church, Delmar, gets ready to prepare the roast beef dinner for The Country Fair to be held at the church Wednesday and Thursday, November 16 and 17.

a Children's Shopping Hour from 6:00 p.m. to 8:30 p.m. at which time free popsicles will be given to them and articles of interest to children will be for sale throughout the fair.



All day  
beauty for sensitive skin

**AR-EX**  
hypo-allergenic  
**MOISTURE LOTION**

Lovely dewdrops that protect and moisturize dry, sensitive skin. Apply before make-up for a fresh dewy look all day. Scented and Unscented.

**RHEINGOLD'S  
PHARMACY**

Ira H. Rheingold, Prop.  
Phone 434-9109  
Glenmont, New York

<p>EARLY MORN-HICKORY SMOKED</p> <p><b>Sliced Bacon</b> 1-lb. pkg. <b>59¢</b></p>	<p>GRAND UNION</p> <p><b>SLICED BACON</b> CRY.-O.-VAC WRAPPED 1 lb. pkg. <b>69¢</b></p>
---	---

**FREE 100 EXTRA BONUS STAMPS**

With this coupon and the purchase of three 1 pt. 2 oz. bts. (4 varieties)

**PFEIFFERS DRESSINGS**

COUPON GOOD THURS., FRI., SAT. NOV. 10, 11, 12

LIMIT ONE COUPON PER CUSTOMER

BLADE CUT

**Chuck Steak** lb **46¢**

**FREE 100 EXTRA BONUS STAMPS**

With this coupon and the purchase of six 1 lb. cans sliced or whole

**White Potatoes**

COUPON GOOD THURS., FRI., SAT. NOV. 10, 11, 12

LIMIT ONE COUPON PER CUSTOMER

GRAND UNION IN OIL OR WATER

**White Tuna** 3 7-oz. cans **89¢**

**FREE 50 EXTRA BONUS STAMPS**

With this coupon and the purchase of one 1/2 gal. bot.

**ORANGE JUICE**

COUPON GOOD THURS., FRI., SAT. NOV. 10, 11, 12

LIMIT ONE COUPON PER CUSTOMER

ALL FLAVORS

**Hi-C Drinks** 3 1-qt. 14-oz. cans **89¢**

**FREE 50 EXTRA BONUS STAMPS**

With this coupon and the purchase of six 1 1/2 oz. cans

**PET MILK**

COUPON GOOD THURS., FRI., SAT. NOV. 10, 11, 12

LIMIT ONE COUPON PER CUSTOMER



CUT FROM YOUNG WESTERN GRAIN FED PORKERS

**PORK LOINS**

Rib Portion lb **39¢**

Rib Half lb **49¢**

LOIN HALF lb **59¢** | WHOLE LOINS lb **54¢**

GOLDEN RIPE

**BANANAS** lb **10¢**

CALIFORNIA-EMPEROR

**GRAPES** 2 lbs **29¢**

RED RIPE-FINE FOR SLICING

**TOMATOES** lb **29¢**

**FREE 100 EXTRA BONUS STAMPS**

With this coupon and the purchase of Ten 3 oz. pkgs.

**ROYAL GELATINS**

COUPON GOOD THURS., FRI., SAT. NOV. 10, 11, 12

LIMIT ONE COUPON PER CUSTOMER

FRESH TOP QUALITY

**Chicken Parts** LEGS with backs BREASTS with wings & backs lb **39¢**

**FREE 100 EXTRA BONUS STAMPS**

With this coupon and the purchase one 1/2 gal. pkg. Grand Union

**ICE CREAM**

COUPON GOOD THURS., FRI., SAT. NOV. 10, 11, 12

LIMIT ONE COUPON PER CUSTOMER

GRAND UNION

**Salad Dressing** qt. jar **39¢**

**FREE 50 EXTRA BONUS STAMPS**

With this coupon and the purchase of one 2 lb. bag

**MIXED NUTS**

COUPON GOOD THURS., FRI., SAT. NOV. 10, 11, 12

LIMIT ONE COUPON PER CUSTOMER

BETTY CROCKER-DEAL LABEL

**Pie Crust Mix** 2 1-lb. 4-oz. pkgs. **69¢**

**FREE 50 EXTRA BONUS STAMPS**

With this coupon and the purchase on one 1 pt. 8 oz. bot.

**SALAD OIL**

COUPON GOOD THURS., FRI., SAT. NOV. 10, 11, 12

LIMIT ONE COUPON PER CUSTOMER

WE RESERVE THE RIGHT TO LIMIT QUANTITIES PRICES AND OFFERS EFFECTIVE THURSDAY, FRIDAY, SATURDAY, NOVEMBER 10, 11, 12  
WE ARE NOT RESPONSIBLE FOR TYPOGRAPHICAL ERRORS

All Sunday  
NEW YORK PAPERS  
Delivered to Your Home  
PHONE 439-4711

Top Soil at its Finest!  
Rich, specially prepared,  
sandy loam or sandy clay  
loam. J. W. MICHAELS CO.,  
INC., LANDSCAPE CON-  
TRACTORS. HE 9-3823;

GLENMONT NURSERY  
SCHOOL  
Operated by a former Kinder-  
garten Teacher  
Ages 3-5 1/2 or Full Day Session  
Call 462-4601

# YOUR CITY & COUNTY CHRISTMAS CLUB HAS MATURED



YOUR City & County Savings Bank Christmas Club check may now be cashed. Then, as you buy Christmas gifts, pay old debts, taxes or meet other year-end expenses, you'll be especially glad you saved regularly this easy, "painless" Christmas Club way.

## JOIN NEW CLUB NOW

## Get your gold Christmas Candles **FREE**

This year City & County Savings Bank is offering a pair of gold Christmas Candles with each new Christmas Club opened. So come in soon . . . get your Christmas Candles and start early on next year's Club.

## City & County Savings Bank

Your Community Bank

Member Federal Deposit Insurance Corporation

DOWNTOWN:  
100 State Street,  
Albany, N. Y. 12201

UPTOWN:  
301 New Scotland Ave.,  
Cor. Ontario Street,  
Albany, N. Y. 12208

BETHLEHEM:  
163 Delaware Ave.,  
Opp. Delaware Plaza,  
Delmar, N. Y. 12054

The booths and their chairmen are: Baked Goods, Mrs. Charles Katz and Mrs. Herbert Steele; Books & Records, Mrs. Frank Leavitt; Christmas Booth, Mrs. Joseph Gowdy & Mrs. George Pelton; Country Store, Mrs. Herbert Cooper and Mrs. Everett Crump; Handkerchiefs, Ties and Belts, Mrs. Philip Champ; Knitting, Mrs. Edward Smith & Mrs. F. Philip Smith; Next-to-New, Mrs. Norman Hulme; Religious Booth, Mrs. Frederick Morse; Silent Auction, Mrs. Pasquale Pugliese & Mrs. Thurlow McWhinnie; Tots-to-Teens, Mrs. John Atwater & Mrs. Nelson Williams; Trash & Treasures, Mrs. Theodore Krantz; Variety Gifts, Mrs. George Casey & Mrs. Leo Rook.

## Meeting

Mrs. Nicholas Sciartelli, Chairman of the Newcomers Antique Study Group, has announced that Mrs. William D. Bennett of Delmar, Bethlehem Town Historian, will give a descriptive history and development of the Town of

*After a day in  
the salt mines...*

there's no jollier place to  
relax and unwind a bit.  
Join us for

*Special Cocktail  
Entertainment  
4:30 to 7:00 P.M.*

golden  
fox



Steak  
House

Complete menu from  
11:30 A.M. to 2:00 A.M.  
Monday thru Saturday  
1:00 P.M. to 2:00 A.M.  
Sunday

1400 Central Avenue  
across from the new  
Colonic Center

## WE'RE PROUD OF OUR BUSINESS

### PATROON FUELS INCORPORATED

91 Lexington Avenue  
HO 5-3581

## WE'RE PROUD OF OUR PRODUCT



Premium Quality Atlantic Heating Oil is triple-refined ... to ignite instantly, burn clean and steady ... to give you the most for your heating oil dollar. Call NOW. We provide prompt, automatic delivery service.

Bethlehem on Thursday, November 17, at 8:30 p.m., at the home of Mrs. Charles F. Walsh, 96 Rowland Avenue.



**DECEMBER BRIDE** — On December 17, 1966, Pamela Sue Allison, daughter of Mr. and Mrs. Darrel D. Allison of Gardena, California, will become the bride of Richard W. Stewart, son of Mr. and Mrs. William A. Stewart, 15 Morningside Drive, Delmar. Richard is currently serving aboard the USS R. B. Anderson in the 7th Fleet.

## Lighting

"Outdoor lighting is one of the best ways to protect your property and yourself," says Richard Swantek, manager of the Eastern New York Adequate Wiring Bureau. He added, "It has already been proven that property values increase when outdoor lighting is installed for homes, businesses, and farms."

The mercury-type light units used are becoming more and more prevalent, according to

Swantek. Business places lead the way but outdoor lighting is no stranger to the suburbs either. "There's a good reason," he said. "People want longer outdoor leisure hours and this type of lighting permits it." The idea of strong outside illumination is said to appeal to northern residents particularly due to the shorter daylight hours. Use of outdoor lighting also forestalls possible crimes and acts as a deterrent to accidents on the property.

For the business location,

powerful illumination has long been recognized as a traffic builder. Promotion men call it the "hot look" and develop it to "attract" in much the same manner as insects flock to a lighted bulb. For the industrial plant or non-retailer, ample outside lighting is gaining increased acceptance as a security measure against crime and vandalism.

Swantek states that today's installation of outdoor lighting is relatively simple and economical. The area to be lighted is calculated scientifically and then



## SLINGERLANDS MARKET

1526 N. Scotland Rd., (next to Fire House)  
Slingerlands, New York

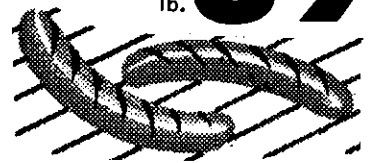
(We reserve the right to limit quantity)

NOVEMBER

# Beef Sale

**SIRLOIN  
STEAK**

lb. **89¢**



TABLETTE  
**FRANKS**

lb. **59¢**

**PORTERHOUSE  
STEAK**

lb. **99¢**

**Sirloin Tip Roast**  
lb. **1.09**

**Boneless  
Rump Roast**  
lb. **1.09**

**Top Round Steak**  
lb. **1.09**

**Cubed Steak**  
lb. **1.09**

### DELICIOUS SERVED GOLDEN

**'CHICKEN IN A BASKET' ..... \$1.75**

Tender and crisp, with our French fried potatoes, rolls and butter

**'CHICKEN LITTLE' ..... 99¢**

For small fry. A generous portion of six drumettes, served with golden French fried potatoes

# TOLL GATE

IN SLINGERLANDS

R. E. ZAUTNER

PHONE 439-9824

R. N. ZAUTNER

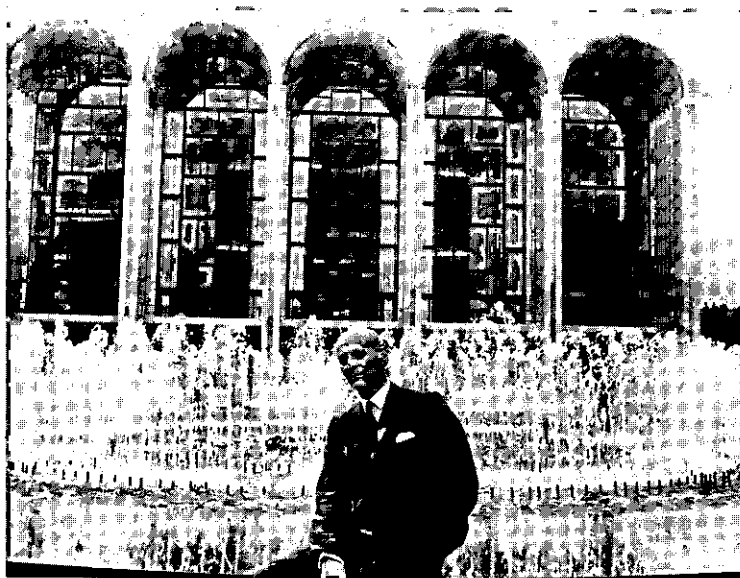
matched with proper lighting units. Outdoor units range from the 175 watt mercury units to 1,000 watts. These are color-improved units in open bottom or enclosed refractor luminaire.

All outdoor lighting units can be equipped with automatically controlled photoelectric units which turn on the lights at dusk and switch them off at daybreak when the light is no longer needed.

Electrical contractors, still the major source of outdoor illumination components, now make residential installations with a variety of house-styled equipment that is in keeping with the decor and layout of the average home.

## Telco Hour

On Sunday, November 20, Bell Telephone Hour viewers will get an inside look at the September 16 opening of the new Metropolitan Opera House in New York City's Lincoln Center



BELL TELEPHONE HOUR PRESENTS MET OPENING — Metropolitan Opera General Manager Rudolf Bing, in front of the new \$45.7 million house, is a central figure in the Bell Telephone Hour's "The New Met: Countdown to Curtain." The program, which gives an inside look at events leading up to the opening, and portions of the opening night performance, will be aired Sunday, November 20, at 6:30 P.M. in color over Channel 6, WRGB.

for the Performing Arts. The color special will be aired at 6:30 P.M. over Channel 6, WRGB.

"The New Met: Countdown

to Curtain" shows Metropolitan Opera General Manager Rudolf Bing as he goes through the many activities preceding the opening of the \$45.7 million, 3,800-seat house. Candid filming techniques provide a rare look at unexpected events and crises leading up to one of the most significant events in musical history.

The world premiere of Samuel Barber's "Antony and Cleopatra," starring soprano Leontyne Price, with a libretto by Franco Zeffirelli officially brought the Metropolitan into its new home. Viewers will see portions of the performance including Cleopatra's death scene and aria, sung by Miss Price.



Spotlight Classifieds  
Tell The World!!!

von Bank's  
TV SERVICE  
HE 4-5887

Quality-Responsibility-Honesty

JAMES W. BARTLEY  
and SONS

Plumbing, heating & electric  
water pump sales & service  
Clarksville PO 8-2230

SPOTLIGHT CLASSIFIEDS TELL THE WORLD

*Freihofer's*  
FAMOUS BATTER-WHIPED  
**SUNBEAM BREAD**  
PHONE **HO 3-2221**  
FOR DAILY HOME DELIVERY . . .  
OF DELICIOUS BREAD, ROLLS, CAKE

## FEATURE OF THE WEEK

Holidays Coming

Plan now to include these traditional favorites in your Holiday Menus.

2-lb. Fruit Bar ..... 2.49

4-lb. Fruit Cake Ring ..... 4.98

Party Cookies ..... 98c

Cake of the Month (Chocolate or Raspberry) ..... \$2.69

## THURSDAY

NOVEMBER 10th

- ☐ BROWNIE RING ..... 79c
- ☐ Strawberry-Rhubarb Pie ..... 79c
- ☐ Chocolate Cups ..... 39c
- ☐ Brownies ..... 79c
- ☐ Chocolate Fudge Sheet Cake ..... 59c
- ☐ Bavarian Pumpernickel ..... 33c
- ☐ King Size Bread (in the bag) ..... 33c

Fresh From the Ovens  
of Freihofer

CINNAMON  
RAISIN BREAD

**39c**

FRIDAY

DON'T FORGET

**FREE**  
**WINTER STORAGE** on your  
**POWER LAWNMOWER**  
SAME AS IN FORMER YEARS

Free Storage

Necessary repairs at nominal cost. Mower returned  
in the Spring. Payment on delivery.

**TAYLOR & VADNEY**

303 CENTRAL AVE. HE 4-9183

Open Daily — 9 A. M. to 9 P. M.

4-PLY NYLON CORD

# SNOW TIRES!

Buy the Snow Tire  
with Deepest  
Biting Edge  
of all Major  
Brands!

B.F. GOODRICH  
TRAILMAKER SILVERTOWNS

2 for as low as

NO MONEY DOWN **\$35<sup>00</sup>** 600x13  
NO TRADE-IN NEEDED  
blackwall  
tubeless plus Federal  
Excise Tax. 2.32

## STEEL SAFETY STUDS GRIP ON ICE!

- **FASTER STARTS**—up to 71% more starting traction
- **SAFER STOPS**—stop 30% better than regular snow tires
- **BEST POSSIBLE CONTROL**—drive with a new confidence

Available in BFG Trailmaker Silvertown and Trailmaker Silvertown Retreads

**7<sup>00</sup>**  
extra  
per tire

TRAILMAKER 330  
SIZE

700/650x13  
775x14  
825x14  
775x15  
845x15

FEDERAL EXCISE  
TAX

1.83  
2.20  
2.36  
2.21  
2.55

BLACKWALL TUBELESS  
PRICE

18.70  
21.25  
24.00  
21.25  
26.00

**B.F. Goodrich**

The Straight-Talk  
Tire People

**Wheel Balancing—Complete  
Front Alignment—Brake Service**

# WEINBERG TIRE CORP.

NEXT TO WESTGATE SHOPPING CENTER

**935 CENTRAL AVE.**

**Tel. IV 2-4449**

Open Monday thru Friday — 8 A.M. to 5:30 P.M. — Open Saturday 8 A.M. to 5 P.M.

**AFTER-SCHOOL  
COOKIES**

**79¢**

- SHORT SUSTARD PIE** ..... 79c
- ☐ Chocolate Layer ..... 69c
  - ☐ Gold Creme Cups ..... 39c
  - ☐ Oatmeal Cookies ..... 39c
  - ☐ Apple Kuchen ..... 49c
  - ☐ Bake-n' Serve Bread ..... 39c
  - ☐ ● Sunbeam Bread ..... 28c

## SATURDAY

NOVEMBER 12th

- ☐ CHOC. FUDGE LAYER ..... 89c
- ☐ Pumpkin Pie ..... 79c
- ☐ Chocolate Eclairs ..... 59c
- ☐ Boston Brown Bread ..... 33c
- ☐ Canadian Oat Bread ..... 33c
- ☐ ● Old Fashioned Bread ..... 35c

Fresh From the Ovens  
of Freihofer

**PECAN  
COFFEE RING**

**59¢**

## MONDAY

NOVEMBER 14th

- ☐ LEMON MERINGUE PIE ..... 79c
- ☐ Pound Cake ..... 49c
- ☐ Cinnamon Curl Buns ..... 39c
- ☐ Gold Sheet Cakes ..... 59c
- ☐ Chocolate Coverette Cups ..... 39c
- ☐ Unsalted Bread ..... 33c
- ☐ ● Raisin Bread ..... 38c

Fresh From the Ovens  
of Freihofer

**GLAZED  
DONUTS**

**44¢**

## TUESDAY

NOVEMBER 15th

- ☐ LOUISIANA RING ..... 79c
- ☐ Pineapple Pie ..... 79c
- ☐ Sugar Cookies ..... 39c
- ☐ Orange Assorted Cups ..... 39c
- ☐ Cream Puffs ..... 59c
- ☐ Salted Rye Bread ..... 33c
- ☐ ● Sandwich Loaf ..... 39c

Fresh From the Ovens  
of Freihofer

**DANISH  
BUTTER TIES**

**49¢**

● Indicates items available every day. The above is not a complete list of available items. For further information ask your Routeman or call the Bakery.

# Freihofer's

QUALITY BAKING IS OUR TRADITION

No mail or phone orders please,  
on these items.



## DELMAR RETAIL STORE AND CATALOG DEPARTMENT

222 DELAWARE AVENUE  
DELMAR, NEW YORK

# 3 DAY SALE

Thursday . . . Friday . . . Saturday

### 2-YEAR GUARANTEE

Your blanket will  
be replaced FREE,  
if found defective  
within 2 years, upon  
return of blanket to  
Wards.



## Save \$2! AUTOMATIC BLANKETS

Reg. 9.99

**7.98** Twin Size

Soft rayon-cotton blend automatic blanket has  
single control, adjusts to room temperature  
changes for utter comfort. Nylon bound.

\*Reg. 11.98, Full Size .....**9.98**

\*Reg. 14.99, Full Size, dual control .....**12.98**

## EXTRA VALUES . . . EXTRA SAVINGS ON HOUSEWARES

Reg. 9.98

**ELECTRIC TOASTERS**

**6.88**

Made with color  
selector.

Reg. 9.99

**ELECTRIC KNIFE**

**7.77**

Serrated stainless  
blades.

Reg. 11.98

**WAFFLE IRON**

**8.88**

Teflon® coated. Dial  
crispness.

**9-Piece TEFLON®  
COOK SET**

**9.98**

Teflon® coated  
aluminum.

DELMAR RETAIL STORE AND CATALOG DEPT., open Tuesday, Thursday, Saturday - 9:30 A.M. to 5:30 P.M.  
Monday, Wednesday and Friday to 8:30 P.M.



# Order Your Holiday TURKEY NOW

FRESH DRESSED, LOCALLY RAISED TURKEYS  
BRONZE, DOUBLE-BREADED

HENS - 10-20 lbs. - lb. TOMS - 18-30 lbs. - lb.

**69¢**

**59¢**

Attention: Deer Hunters

We will skin and cut up your deer.

## DEX DAVIS' MEAT DEPT

NEW SCOTLAND, N.Y.

439-9419

## SCHARFF BROTHERS



FUEL OIL SERVICE  
Glenmont, New York

Glenmont: HO 5-3861

South Bethlehem: RO 7-9056

We'll make your  
motor  
sing



- \* Engine Tune-up
- \* Front End Alignment
- \* Automatic Trans-  
mission Service
- \* Modern Equipment
- \* Skilled Mechanics

## BAILEY'S GARAGE

Phone Delmar HE 9-1446  
Oakwood Rd., Elsmere

SLICED, QUARTERED

**PORK  
LOIN**

CUTS FROM IOWA  
CORN-FED PORKERS

lb. **59¢**

**PORK  
LOIN**

Whole  
or  
Rib Half

lb. **59¢**

WILSONS, CERTIFIED

**FRANKS**

lb. pkg. **59¢**

**GROUND  
CHUCK**

lbs.  
or  
more  
lb. **373¢**

RATH'S, HONEY GLAZED  
FULLY COOKED

**HAM**

4 lb. can **4.94**

OLD FASHIONED,  
AGED

**RAT CHEESE**

lb. **73¢**

MEAT DEPT. PHONE: 439-9419

Custom  
Cut and  
Wrapped

**FREEZER BUYS**

U.S.D.A. CHOICE

**ARM CHUCK OF BEEF** lb. 49¢

**HINDQUARTER** lb. 69¢ **FOREQUARTERS** lb. 49¢

**SIDES OF BEEF**

lb. 59¢

No coupon or \$5.00 purchase needed

**SUGAR**

5 lb. bag **39¢**

CHASE & SANBORN INSTANT

**COFFEE**

12 oz. jar **1.29**

DOLES, PINK PINEAPPLE/GRAPEFRUIT

**JUICE**

4 6 oz. can **25¢**

DIAMOND PLAIN OR IODIZED

**SALT**

box **10¢**

DEL MONTE, WHOLE KERNEL

**CORN**

303 can **19¢**

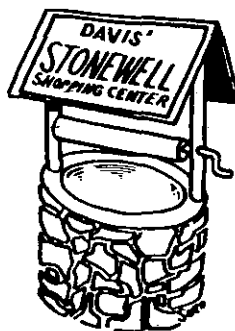
**PRODUCE SPECIALS**

TENDER  
**NEW CARROTS**

cello bag **10¢**

YELLOW, GLOBE  
**COOKING ONIONS**

3 lb. bag **29¢**



JUNCTION HIGHWAYS 85 & 85A  
NEW SCOTLAND, NEW YORK

HE 9-5398

Open Daily and Sundays  
10 A.M. to 10 P.M.

Reserve right to limit quantities

Prices effective: Thurs., Fri., Sat.

11/10, 11/11, 11/12

A GOOD BANK TO START WITH . . . A GOOD BANK TO STAY WITH

# START EARNING 5%\* A YEAR ON YOUR SAVINGS THIS SATURDAY AT OUR WESTGATE OFFICE

The first savings bank to have Saturday hours



## WE'RE OPEN FROM 10 A.M. UNTIL 3 P.M. EVERY SATURDAY



Any Saturday, at National Savings Bank's Westgate Office, you can open a Savings Account, get Money Orders, buy Travelers Checks . . . and there's plenty of free parking.

## NATIONAL SAVINGS BANK WESTGATE OFFICE

DOWNTOWN, CORNER OF STATE & PEARL: OPEN 9 AM-3 PM MON.-FRI., THURSDAY TILL 8 PM

UPTOWN, WESTGATE SHOPPING CENTER: OPEN 10 AM-4 PM MON.-THURS., 10 AM-8 PM FRI., 10 AM-3 PM SAT.

MEMBER FEDERAL DEPOSIT INSURANCE CORP. ALBANY, NEW YORK FREE PARKING AT PARK & SHOP LOTS

\* LATEST DIVIDEND: 5% a year anticipated. Includes an extra dividend at the rate of ½% a year in addition to our regular dividend of 4½% a year for the period beginning October 1, 1966. Dividends are earned from date of deposit and compounded quarter-annually.



## SPOTLIGHT CLASSIFIEDS HE 9-4949

## Meeting

Following a gourmet covered dish supper held at St. Stephen's Episcopal Church, Elsmere, the Helder-Hawk Chapter of the N.C.H.A. held their first fall meeting. Mr. & Mrs. Charles Van Allen, Field Directors of N.C.H.A., installed the newly elected officers for the coming year: President, Ken and Margaret Ryan; Vice Pres., Steve and Marion Fordham; Secretary, John and Ruth Mudge; Treasurer, Lee and Marge Williams.

The retiring president, Mr. & Mrs. Tom Patterson, Delmar, were presented with a gift of appreciation for their many efforts toward the chapter during the past year.

Sears Van Alstyne concluded the meeting with movies of various N.C.H.A. National and District Conventions.

The next meeting of the Helder-Hawk Chapter will be held at St. Stephen's Episcopal Church, Elsmere, on Friday, November 25, at 8 P.M.

## Bazaar

The Ladies' Auxiliary of the Slingerlands Fire Department is having its annual Harvest Bazaar and Bake Sale at the Fire House, Saturday, November 12, from 11 A.M. to 3 P.M.

## UNICEF Report

In the Tri-Village area (Glenmont included) \$889.85 was collected by 337 children and youth in the 1966 UNICEF drive. "It is gratifying to think of the tremendous good this will bring to needy children around the world," commented Reverend William Vigne, the director of the drive. "Not only the bene-

5 pc. ROCK MAPLE

**Dinette Set \$109.50**

36x36x48 Round Table, 4 Farm House Chairs

6 pc. ROCK MAPLE

**Bedroom Set \$375.95**

Double or Twin Bed; Double Dresser and Mirror; Chest; Nationally advertised Mattress and Box Spring.

7 pc. ROCK MAPLE

**Dining Room Set \$199.50**

36x56x76 oval Table; 4 Governor Carver Side Chairs; 2 Governor Carver Armchairs; Rock Maple.

3 pc. ROCK MAPLE

**Living Room Set \$139.95**

Sofabed, Platform Rocker, Armchair.

2 pc. OVERSTUFFED

**Living Room Set \$156.95**

If you want a Mattress and Box Springs, check us first for our low factory salesroom prices.

Visit our salesroom and see our complete line

**HAWLEY COMPANY**  
**Furniture Manufacturers**

Maple Street

East Arlington, Vermont

Tel. 375-6675

50 Gold and Prize Medals



50 Gold and Prize Medals

BY APPOINTMENT TO HER MAJESTY THE QUEEN  
SCOTCH WHISKY DISTILLERS  
JOHN DEWAR & SONS LTD.

1860 1861 1862 1863 1864 1865 1866 1867 1868 1869 1870 1871 1872 1873 1874 1875 1876 1877 1878 1879 1880 1881 1882 1883 1884 1885 1886 1887 1888 1889 1890 1891 1892 1893 1894 1895 1896 1897 1898 1899 1900 1901 1902 1903 1904 1905 1906 1907 1908 1909 1910 1911 1912 1913 1914 1915 1916 1917 1918 1919 1920 1921 1922 1923 1924 1925 1926 1927 1928 1929 1930 1931 1932 1933 1934 1935 1936 1937 1938 1939 1940 1941 1942 1943 1944 1945 1946 1947 1948 1949 1950 1951 1952 1953 1954 1955 1956 1957 1958 1959 1960 1961 1962 1963 1964 1965 1966 1967 1968 1969 1970 1971 1972 1973 1974 1975 1976 1977 1978 1979 1980 1981 1982 1983 1984 1985 1986 1987 1988 1989 1990 1991 1992 1993 1994 1995 1996 1997 1998 1999 2000

**"White Label"**

REGISTERED U.S. PATENT OFFICE

**DEWAR'S**  
**BLENDED SCOTCH WHISKY**  
100% SCOTCH WHISKIES  
PRODUCT OF SCOTLAND  
BLENDED AND BOTTLED BY

**John Dewar & Sons Ltd.**  
DISTILLERS  
PERTH  
SCOTLAND.

QUART. 8° PROOF

DISTILLED, BLENDED AND BOTTLED IN SCOTLAND  
REGISTERED JOHN DEWAR & SONS LTD.  
Sole Distributors in U.S.A.  
Import Company, New York N.Y.

BLENDED AND BOTTLED IN SCOTLAND  
BRITISH GOVERNMENT SUPERVISION



*Dewar's  
never varies!*


86.8 PROOF © S.I.C.



**WE WANT YOU!**

*Rebellion '67*

**ALBANY DODGE**



**HOUSE PLANTS**  
**BONSAI PLANTERS**  
**& STANDS**

*Jeffers Nursery*

1900 New Scotland Road      Slingerlands, New York  
Tel. 439-5555

- New Barber Shop in Town! -

**NOW OPEN**

**Tony Morelli says . . .**  
 Many thanks to all my former customers . . . I hope that you'll drop in to see me at  
**My New Barber Shop in GLENMONT**  
 Behind Rheingold's Pharmacy  
 Routes 9-W and 32

*Stulmaker's*

*Distinctive imported and domestic fashions for men*

**Bronzini Neckwear**

**Daks**

**Gino Paoli Knitwear**

**Baker Clothes**

8 James Street • Albany, N. Y.  
 HE 6-1142

fits to the recipients but the good it does our Tri-Village children to be engaged in helping others makes this a venture of great worth." Mr. Vigne noted that this year we were \$150 less than last year and said part of the reason was that only 60 Junior and Senior High students participated so that less than half of our Tri-Village area was covered in the evening.

**Fish to Speak**

A regular meeting of the Parent-Faculty Advisory Committee of the Bethlehem Central Senior High School will be held Wednesday, November 16, beginning at 7:30 P.M. at the Senior High School.

Speaker for the occasion will be Peter Fish, Chief, Town of Bethlehem Police Department. He will talk on the subject "The

Operation of Your Bethlehem Police Department," with special emphasis on the activities of the Youth Bureau. Chief Fish will be assisted by Captain Robert Foster, who heads up the Youth Bureau, and Sgt. Kenneth Lake, who has long been prominent in youth work in the Bethlehem area. All parents of Senior High School students, and other interested parties, are cordially invited to attend.

**10th Anniversary**

Ten years old next Friday, November 18, the congregation of the Delmar Presbyterian Church is planning a festive anniversary party. The 94 families active in the church have received invitations to the celebration, scheduled for 8:00 p.m.

**Myers**  
 DOWNTOWN, ALBANY

**SHOP MYERS  
 DOWNTOWN  
 SPECIAL SALE ITEMS**

FOR

**VETERAN'S ★ DAY**

\*\*\*\*\*

TREMENDOUS VALUES IN ALL DEPARTMENTS!

At Myers, we welcome your charge account . . . and, of course, this is the time for Holiday layaways. This is something special at Myers. Come in, take advantage of our Special Prices for Veterans' Day and we'll tell you all about our layaway department . . . and why Christmas Shopping can be such fun at Myers!

**ARMSTRONG**

PRE-**SNOW** SPECIAL

**\$9.95**

Black Wall  
 With Recappable  
 Tire  
 Any of These Sizes  
**600 x 13**  
 36c FED. EX. TAX  
**750 x 14**  
 40c FED. EX. TAX  
**800 x 14**  
 44c FED. EX. TAX

**2 FOR \$19.00**

**NEW TIRE GUARANTEE  
 FOR ONE FULL YEAR**

**TIRES MOUNTED FREE!**

**LOW PRICES ON NEW WHEELS**

**KISKIS TIRE  
 co.**

Albany-Schenectady Rd., opp. the new Sears Store  
 Mon. thru Sat: 8 to 6 Phone HE 8-6649 Wed. & Fri: 8 to 9

in the church's fellowship hall at 585 Delaware Avenue.

Honored guests will be the Rev. Mr. George Phelps and Mrs. Phelps and the charter members still residing in the community. They are: Mr. and Mrs. Robert Baker, Mrs. John Bourke, Mrs. Charles Burns, Mr. and Mrs. Herbert Mayne, Mrs. George Porter, Mr. and Mrs. Hudson Winn, Mr. and Mrs. Gerald Knapp, and Mr. Herbert Drew. Mr. Phelps has been with the congregation since shortly after it was organized.

Also present will be the Rev. Dr. George Morgan representing the Presbytery of Albany. The Delmar Church was the first new one sponsored by the Presbytery in 50 years. In September the congregation pledged well over its goal for the next phase in its building program.

A history of the church is being prepared by Mr. Charles Cross and Mr. and Mrs. Richard Brown. Slides depicting the history will be shown by Mrs. George Porter, who recently became the church's first wo-

**EVEREST & JENNINGS**  
**WHEELCHAIRS**  
 FOLDS TO 10"  
 RENTALS & SALES  
 Albany Surgical Co.  
 HE 4-5716

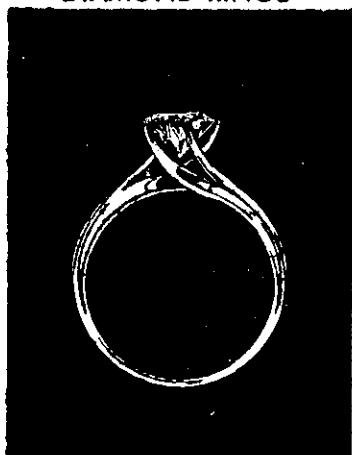
RCA Whirlpool - Magic Chef  
 Admiral & Hotpoint Appliances  
**MOTOROLA TV**  
**DELMAR APPLIANCES**  
 239 Delaware Avenue, Elsmere  
 Telephone 439-4558

SPOTLIGHT CLASSIFIEDS TELL THE WORLD!

**FRANK H. Adams**  
**JEWELERS - SILVERSMITHS**

*Orange Blossom*

**DIAMOND RINGS**



**PIRQUETTE . . . . . From \$100**

*It's not too early  
 to layaway for Christmas*  
**Charge Accounts Invited**

**58 No. Pearl St., Cor. Steuben**

**Free Parking at All Park & Shop Lots**

**EVEREST & JENNINGS**  
**WHEELCHAIRS**  
 FOLDS TO 10"  
 RENTALS & SALES  
 Albany Surgical Co.  
 HE 4-5716

**General Electric  
 Automatic Range**



Model J 329

**Lowest Priced  
 P-7 Oven Range**

- Hi-Speed, self-cleaning Calrod® surface units.
- Automatic oven timer, clock and minute timer.
- Roomy storage drawer.

**This is your range!** And you'll love it. It's a handsome, fully automatic range with clock, timer and many more deluxe convenience features.

**This is your oven!** Fabulous P-7, the oven that cleans itself electrically, eliminates the messiest, toughest chore in the kitchen.

**This is your price!** \$249.95. Less than you might pay for an ordinary range, but giving you so much more.

Only the enormous demand plus G.E.'s unique production genius make this sensational value possible. So why wait any longer? Today you can end oven cleaning for you—forever.

P.S. Remember, P-7 self-cleaning oven ranges are made by General Electric. They're available in many types of ranges. G-E Built-in P-7 Ovens are also available.

**\$ 249<sup>95</sup>\***

**the Carriage Stop**

339 Delaware Avenue, Delmar, New York

OPEN MONDAY - FRIDAY 9-5; SATURDAY 9-12  
 Evenings by Appointment



Phone: 439-2430



## The Highest Legal Interest Rate for Savings Banks

# 5%

PER ANNUM

(4½% Regular Plus ½% Extra)  
Anticipated for Quarter Ending Dec. 1, 1966  
based on continuation of favorable earnings

PAYABLE FROM DAY OF DEPOSIT AND COMPOUNDED QUARTERLY

You can enjoy high earnings for your savings and other services of this Bank by mail. Just send your first deposit with the coupon and you will receive your new bank book promptly. Thereafter we pay postage on all banking-by-mail transactions.

**NOW . . .**  
**MAXIMUM INSURANCE**  
**FOR EACH DEPOSITOR**  
**\$15,000**  
**INSURED BY FDIC**

MECHANICS EXCHANGE SAVINGS BANK  
47 STATE STREET, ALBANY, N. Y.

Enclosed is:

- ☐ Bank Check      ☐ Postal Money Order  
☐ Express Money Order      ☐ Currency  
(Send by Registered Mail)

Please open a savings account in the name or names written below.

Name \_\_\_\_\_ please print \_\_\_\_\_ Social Security No. \_\_\_\_\_

Name of other person if a joint account

Address \_\_\_\_\_  
No. \_\_\_\_\_ Street \_\_\_\_\_  
City \_\_\_\_\_ State \_\_\_\_\_



111 WASHINGTON AVENUE

ALBANY

**MECHANICS  
EXCHANGE  
SAVINGS  
BANK**



STUYVESANT PLAZA



47 STATE ST.

NEW YORK

MEMBER FEDERAL DEPOSIT INSURANCE CORPORATION

Since 1855... **THE FAMILY BANK** for Savings and Home Financing

man elder.

General chairman for the anniversary celebration is Mrs. Samuel Hazleton. She is being assisted by Mrs. George Groff, invitations; Mrs. David Rees, decorations; Mr. and Mrs. Robert Johnson, entertainment; Mrs. Willis Bumstead, refreshment; and Mrs. Robert Lynk, publicity.

## Meeting

Christmas decorations will be made at the Birchwood Acres Home Demonstration Unit meeting Thursday, November 17, at 8:00 p.m. in the main dining room of the Senior High School. Mrs. Albert Shaw will be the instructor.

Refreshments will be served by Mrs. Anthony Brachthäuser, Mrs. Charles Herr, and Mrs. Roger Sutliff.



**ON PROGRAM** — Donna Powers, partner of Ken Whitmer in his musical humor act, will be one of the floor show headliners at the Annual Banquet and Installation of Officers of the Home Builders Association Saturday evening, November 26, at Thruway Convention Hall.

## Meeting

Kenaware Park Home Demonstration Unit is inviting every homemaker of the Kenaware Park area to attend its program on making gifts for the holidays. Members will show gifts which they have made and explain the procedure.

Anyone who is interested in the projects and the teaching programs of the Cooperative Extension, developed at Cornell University and presented through the Albany County Ex-

tension Service, Home Economics Division, is especially invited. The group will meet Monday, November 14, at 8 p.m. at the Bethlehem Senior High School.

## Italian Night

That's right, the date of Nathaniel Adams Blanchard Post, American Legion, Italian Night is Saturday, November 12.

And what difference does it make if we recognize Columbus Day last month or this?

"What counts is that we will

celebrate Columbus Day. It will be feted as only it can be at Blanchard Post with all its color, feasting and music," announced Vice Commander - Activities Chairman Hugh Stowers.

Chairman for the event will again be Gus Williams who is properly proud of his American-Italian heritage.

Gus has lined up a top-notch squad of pisanos to help him with the affair. His first chef is Ambrosé Lozano. Jim Masci is salad chef. They'll prepare a full-course Italian dinner. The donation for

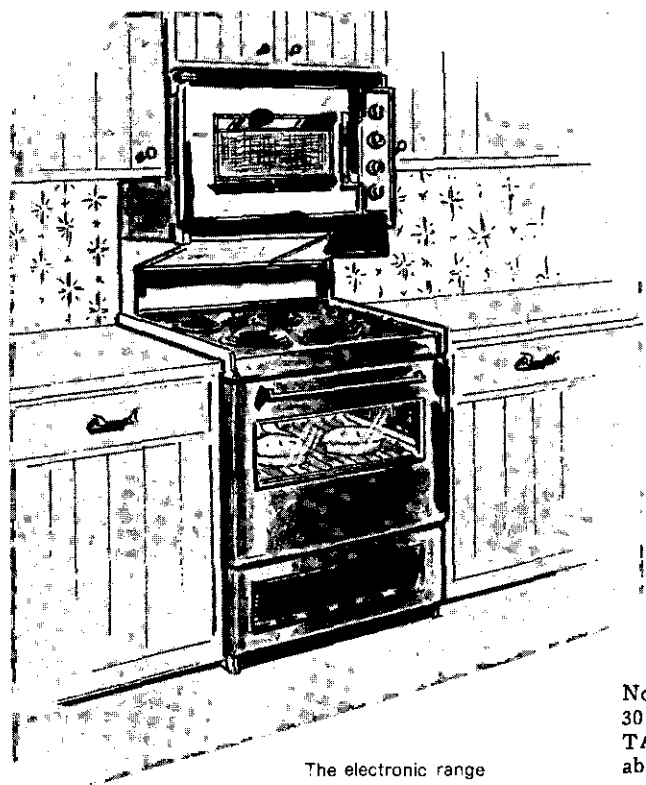
### YOUR HEADQUARTERS FOR FANCY & GOURMET FOODS

- CHALET SUZANNE plus numerous other outstanding brands
- and FEATURING:
- HARRY & DAVID
- SPICE ISLANDS
- HIGH VALLEY FARMS
- WAGNER'S

## Walley's Farm

924 New Scotland Road  
Albany, N.Y.

WO 2-0513



The electronic range is above, the conventional range and oven below.

To the best of our knowledge, ours is the only retail-level display of the TAPPAN Electronic Cooking Center in this entire region.

Come to Mayfair  
Kitchen Center and  
we'll show you **how  
to bake potatoes  
in 5 minutes.**

Not only in five minutes, but also in considerable style! Nestled into 30 inches of space in one of our handsomest display kitchens is the new TAPPAN Electronic Cooking Center that fits any kitchen. This remarkable — and beautiful — unit is a wedding of electronic near-magic with conventional electric cooking. It's a joy to use. It will give your family a lifetime of pleasure . . . and free you from hours of drudgery.

*Just listen to this!* You can broil a steak in 4½ minutes, bake a two-layer cake in 6 minutes . . . and poach eggs in exactly 27 seconds.

The oven stays cool, your kitchen stays cool . . . and the food is simply delicious.

- No clockwatching. No temperature setting. One simple control does it all. It's safe, too — can't hurt a child.
- Best of all, perhaps, natural flavors, color and nutrition are retained more fully than ever before.

- The oven walls actually stay cool to the touch. Only the food broils, bakes and cooks. You can cook in the dishes you'll serve in, without burning, without hot pads. And cleaning is a cinch. Foods just won't stick to the cool oven walls.

Think we're enthusiastic? Wait till you see it. Drop in any time. This is another jewel in our crown and we enjoy showing it.



CENTRAL AT LARK • ALBANY

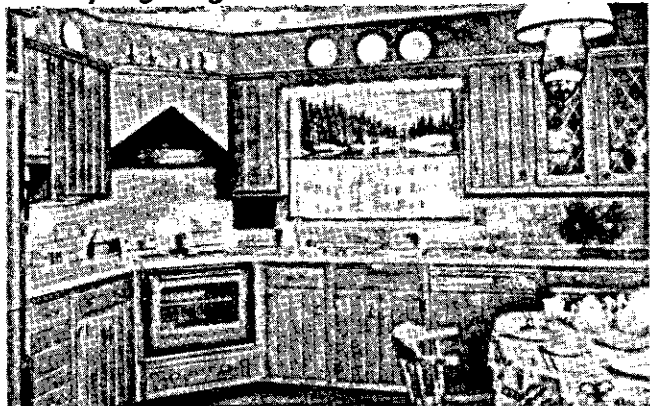
# KITCHEN DESIGNERS

OF ALBANY, INC.  
1670 CENTRAL AVE., ALBANY, N. Y.

Let Your Eyes Tell You What Words Cannot!

## WOODMODE KITCHENS

Styling Elegance and Excellent Values!



**CALL 869-0044 TODAY!**

**MONDAY Thru FRIDAY 10 A. M. - 5 P. M.**

**SATURDAY 'TIL 1 P. M.**

**EVENINGS BY APPOINTMENT**

the feast is \$2.25 per plate. The serving starts at 5:30 and lasts for three hours.

Dining room helpers will include Russ Brandon, Ray Callagan, John Enis, Bill Flint, Ken Stinson, John Sullivan, Joe Von Ronne, and Gus's brother, Frank.

There's also a long list of helpers getting the program together. They include Tony Ballo, John Caliendo, Dick Dalton, Bob Fraim, Sid Kaplan, Red Kernahan, Hank Kinberg, Giff Lance, Ross Miller, Tony Pallone, Andy Rooney, Paul Sherman, and Ed Voelk. These are the lads who'll be distributing the tickets for the dinner, doing the decorations and making other arrangements.

The "Wine girls" will be headed up by Ann Carroll who is getting her crew of wine-servers together for the occasion.

Music will be under the direction of Tom Ippolito.

As always, tickets can be secured from Art Quinn.

Chairman Williams has a "surprise floor show" in store for those who remain after the din-

ner for the dance. The dancing will be from nine until two a.m.

## Meeting

Mrs. Edward Costigan, president of Nathaniel Adams Blanchard Unit #1040, American Legion Auxiliary, announces the regular monthly meeting will be held Tuesday, November 15, at 8:00 P.M. in the Post rooms, Popular Drive, Delmar.

## Supervisor Will Speak

Sandwich-in-a-book day is almost here again, so circle Wednesday, November 16 in bright red on your calendar. The Delmar Public Library will continue to present a series of chats designed to acquaint residents, or all who may be interested, with the Tri-Village area.

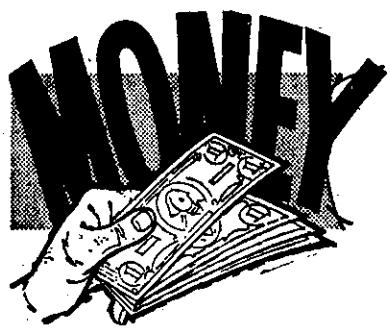
The first speaker, Paul Huey an archeologist, presented early area history to a spellbound audience. This second meeting will bring Bertram Kohinke, Supervisor of the Town of Bethlehem. Mr. Kohinke will discuss progress in the Town — past, present and future. Certainly everyone will wish to take advantage of this opportunity to learn what is in the offing in the area. Coffee will be perkin'.

## St. Rose

The College of St. Rose Alumnae Association will sponsor an Evening of Reflection on November 18, at 8:00 P.M. in the Campus Center.

The topic, "What Ecumenism Means to You" will be discussed by a panel of experts. A question and answer period will be followed by an informal reception.

Rev. James C. Plastaras, C. M., author of a new book, "The God of Exodus," will be the moderator for the panel. Other panelists will include: Sister Mary Margretta, R.S.M., Directress of Admissions at Maria College, Albany; Mr. Raymond O'Brien, Headmaster of St. Gregory's School, Loudonville; and Mrs. Vito Geoia, Schenectady housewife.



**WHEN YOU NEED IT!**

From . . . . .

**Community**  
STATE  
**BANK**

**\$1,500**

**\$2,500**

**\$5,000**

WITH

**CONSOLIDATION LOANS**

**- UP TO 36 MONTHLY PAYMENTS -**

**- JUST CALL US -**

50 State St., Albany

HO 2-4261

567 New Scotland Ave., Albany

HO 2-4261

224 State St., Schenectady

374-3381

1815 State St., Schenectady

DI 6-4231

MEMBER FEDERAL DEPOSIT INSURANCE CORPORATION



HE 9-4949

SPOTLIGHT CLASSIFIEDS

HE 9-4949

**CLASSIFIED AD POLICY**  
Classified Ads in the Spotlight must be paid for when the ad is submitted. We must enforce this policy strictly. Our rates are too small to permit invoicing and bookkeeping on these accounts. Please do not ask us to make any exception to this rule.

Your copy and remittance must reach us on Friday before 4:30 P.M. in order to appear in the following Thursday issue.

**CLASSIFIED ADVERTISING RATES**

10¢ per word for each insertion; \$1 minimum.

**CALL HE 9-4949**

Write, or stop in at our convenient office:  
154 Delaware Avenue

**APPLES**

**BEST PLACE TO BUY**

Northern Spy - MacIntosh  
Fresh Brown Eggs

**Haswell Farms**

Route 32 at Murray Avenue  
439-3893 Delmar

**BLACKTOP**

**LUIZZI BROS.**, Blacktop Paving: Parking lots, driveways, garage floors, sidewalks. Free estimates. 482-3484. tf

**CAPITAL PAVING SERVICE** - Blacktop, landscaping - topsoil. Free estimates, all work guaranteed. 434-4920. tf

**BUILDING & CONTRACTING**

**HOMES**, garages, remodeling, additions, "easy terms," Hogan Construction Co. IV 2-4683. tf

**CARPENTRY**

**ADDITIONS**, remodeling, roofing, stairs, general repairs. Arthur Molle. HE 8-7165. tf

**CARPETING**

**NEED CARPET?** See a Hometown representative at LATHAM Rug Co., Carl Van Hoesen. Store ST 5-8521 Home HE 9-1485. tf

**CAR WASHING**

**BETHLEHEM AUTO LAUNDRY** on Rt. 9W just south of Delmar By-Pass. 2-25¢ coin operated bays. 1-automatic bay. Wash-\$1.00. Hand dried 50¢. Phone HO 5-9157. 8t1124

**CLEANING SERVICE**

**LOCHMOOR** Window Cleaning Co. Resident and office maintenance, complete. IV 9-0121 or 489-2474. tf

**HOUSE CLEANING**, window washing, floor maintenance, also any other cleaning you need. Old Holland Cleaning Service, Inc. RO 7-2739. tf

**DRIVER TRAINING**

**Albany Driving Academy**

67A Edgewood Ave., Albany

Beginners - Intermediates  
Brush-Up

**CARS AVAILABLE FOR ROAD TESTS**

Standard & Automatic

Call HO 2-1309

**DRAPERIES**

**DRAPERIES** and bedspreads, custom made and alterations. Free estimates. Call Barbara Schoonmaker. 872-0897. 4t1124

**DOLL REPAIRING**

**DOLLS** repaired, restring, costuming. Reina Deitz. HE 6-1690. tf

**FUNERAL DIRECTORS**

**M. W. TEBBUTT'S SONS**  
Albany Delmar

420 Kenwood Ave.

489-4451

*Serving All Faiths  
For Over 100 Years*

**FIREPLACE WOOD**

**HARD**, seasoned fireplace wood. Call Albany IV 2-5231. tf

**INSTRUCTIONS**

**ANN'S DRIVING SCHOOL**

Ann H. LeFleur, Prop.

Serving the Albany-Delmar Area

UN 9-8734 or 872-0873

Office: Helderberg Trail  
East Berne, N.Y.

**ALTERATIONS & SEWING**

**ALTERATIONS** and sewing. M. Buess. HE 9-1270. tf

**ALTERATIONS** and sewing. Kirk Hauser. HE 8-0014. tf

**ALTERATIONS**, dressmaking. Diane. HE 9-5740. tf

**ALTERATIONS** and dressmaking. Call Irene. Four Corners, Delmar. HE 9-9257. tf

**ALTERATIONS**, sewing, drapes, slipcovers. 434-4753. Call after 6 except Thursday. tf

**AUTO UPHOLSTERING**

**AUTO** upholstery; Antique cars a specialty. Bob's Auto Top Shop, rear 300 Delaware Avenue, Delmar. tf

WHY DON'T YOU SUBSCRIBE TO THE SPOTLIGHT

**LEASE A VOLKSWAGEN**

**ONLY \$6.** PER DAY + 6¢ PER MILE

Special Weekly and Monthly Rates Available

**ACADEMY MOTORS, INC.**

TROY - SCHENECTADY RD., LATHAM  
785-5581

**BOULEVARD DECORATORS**

ABBOTT ARCHITZEL, Owner

Custom Made

**SLIP COVERS**

**DRAPERIES**

**UPHOLSTERERS**

- \* QUALITY
- \* SELECTION
- \* SERVICE
- \* TERMS

OUR OWN WORKROOMS  
FABRICS IN STOCK  
10 DAY DELIVERY  
BUDGET OR CHARGE

**FREE ESTIMATES**

**SHOP-AT-HOME 434-9191**

Our Decorators Will Show Samples In Your Home

DAY OR EVENING Without Obligation

240 WASHINGTON AVE.

ALBANY

PARK FREE at Park & Shop Lot, Wash. Ave., Above No. Blvd.

**JEWELRY**

**EXPERT WATCH AND JEWELRY** repairs. Diamond setting, engraving wedding and engagement rings, reasonable. Your trusted jeweler, D. LeWanda, Delaware Plaza Shopping Center. HE 9-9665.

**LANDSCAPING**

**TOP SOIL**, landscaping - Fall cleanup, lawn maintenance, tree cutting. Hummel. 439-8115. Slingerlands. 4t1124

**LAWNMOWERS**

**LAWNMOWERS - SALES AND SERVICE.** Hilchie's Hardware, Delaware Avenue, Delmar. HE 9-9944. tf

**IMMEDIATE** repair: Lawnmowers, tillers. Call after 5 P. M., all day Saturday. HE 9-4873. tf

**SHARPENED** and repaired. Your Jacobsen Sales and Service dealer. M. Gudiz, 138 Elm Avenue, Delmar. HE 9-2025. tf

**Colonial Acres**



RT. 32, GLENMONT, N.Y.  
A planned community of early American homes.  
PHONE HE 9-9231



**Mustang!**

'66 MUSTANG EXECUTIVE 2-dr. Hardtop, 8-cyl., Cruisomatic, Console, Power Steering, Heater, WW Tires. Choice of Beige, White. \$2595

'65 MUSTANG 2-dr. Hardtop V8. Cruisomatic, Radio, Heater, Vinyl Int. Choice of four. Low mileage. \$1995

'65 MUSTANG Conv. Std., Radio, Heater, WW Tires, Power Top, Vinyl Int. White. \$1895

'65 MUSTANG 2-dr. Hardtop, 6-cyl. Cruisomatic, Radio, Heater, WW Tires. Blue, White. \$1895

**OFFERED WITH NEW 24-MO. OR 50,000-MILE FORD POWER TRAIN WARRANTY**  
Buy Low at

**CRAILO**



EAST GREENBUSH

GR 7-9302

**LIQUORS & WINES**

**SLINGERLANDS PACKAGE STORE.** Complete line. Deliveries. Discount on case lots. Party consultants. Open 10 A. M. to 10 P. M. Phone HE 9-4581. tf

**O'ROURKE'S** Liquor Store, Corner Elm Avenue & Jericho Road. Selkirk. tf

**MASON WORK**

**EXPERIENCED**, all types masonry, new or repairs. Guidara. HE 9-1763 evenings. tf

**MOVERS**

**D. L. MOVERS.** Local and long distance moving. Reasonable rates. No job too small or too large. Dick Leonardo. HE 9-5210. tf

**HOUSEHOLD MOVING**, low rates, new equipment, experienced personnel, free maid service. Local moving. 465-1200. tf

**REFRIGERATORS** and appliances moved by local resident, reasonable rates. 439-1140 or 439-9805. tf

**MIMEOGRAPHING SERVICE**

**REASONABLE RATES -** Mimeographing - stencils cut - addressing - mailing, Delmar, N.Y. 439-3383. tf

Mimeographing and typing service. Pick-up and delivery. Mailings handled. Prompt service. Marion Hatch, Voorheesville. 765-2254.

SUBSCRIBE TO THE SPOTLIGHT

**Premiere Showing**

3 Decorator Furnished  
**MODEL HOMES**  
Priced from \$18,790  
**Open House**

1 P.M.  
'TIL DARK



**SALEM HILLS**

Voorheesville

HOW TO GET TO SALEM HILLS

From Albany take Western Ave. (Rt. 20) turn left on State Farm Road (Rt. 155) to Maple Avenue, Voorheesville. Turn right and watch for our signs.

OR

From Albany take New Scotland Avenue (Rt. 85) to Maple Avenue (Rt. 85A). Turn right and proceed on Maple Avenue to Salem Hills, Voorheesville.

A Glenmont Development Corporation Community  
Exclusive Sales Agent  
**Reiner Realty**  
HO 5-4565  
Albany, N. Y.

**ORIENTAL RUGS**

**NEW AND USED**, in all sizes and colors at reasonable prices. Washing and repairing by native expert. Pickup and delivery. Free estimates. Rod Kermani. Stop 3, Albany-Schenectady Road. EX 3-6884 or IV 2-0457. tf

**PAPERS**

**SUNDAY NEW YORK PAPERS** delivered to your home. Phone 439-4711. 4t1124

**PAINTING & PAPERHANGING**

**INTERIOR**, exterior painting. Free estimates. Guaranteed. Insured. Jim Vogel. HE 9-9718. tf

**INTERIOR** and exterior painting. Also carpentry work. Frank Salisbury. Days: HE 9-5527; nights: HE 9-1355. tf

**DON VOGEL**, exterior - interior painting, paperhanging, fully insured. HE 4-2853, HE 4-8370. tf

**PAPER** hanging and painting work desired in Tri-Village area. C. J. Ryan. 439-9561. 4t1110

**PERMANENT WAVING**

**SPECIALIZING** in Breck, Realistic, Rayette and Caryl Richards permanents; hair tinting and bleaching. MELE'S BEAUTY SALON, Plaza Shopping Center. HE 9-4411. tf

**PIANOS**

**PIANOS -** organs. Area's largest selection. BROWN'S PIANO - ORGAN MART. 459-5230. tf

**SCISSORS SHARPENED**

**SCISSORS SHARPENED**, 6 pairs med. size, \$2.00 also pink shears, saws, hair clippers, lawnmowers, knives. Called for and delivered HE 9-3893. tf

**SEPTIC TANK SERVICE**

**NORMANSKILL** Septic Tank Cleaners. We install dry wells, septic tanks, drain fields. 767-9287. tf

**DELMAR SANITARY CLEANERS** Serving Tri-Village area over 20 years. HE 9-1412. tf

**TREE SERVICE**

**HERM'S TREE SERVICE:** trimming and removal (insured). Call Albany, IV 2-5231. tf

**BROWNIE'S** complete tree service and removal. Insured. Tree estimates. IV 2-5031. 4t1124

**UPHOLSTERING & SLIPCOVERS**

**DROZDOL** upholstery service. 15 years experience. 16 Judson Street. HO 5-6795. 10t1222

**CAPITOL** upholstery • Large selection of upholstery and slip covers reasonable. HO 3-2359. tf

**VACUUM CLEANER SERVICE**

**SUPERIOR** vacuum, Hoover sales service all makes. Pick-up and delivery. IV 9-0905. 4t1124

**WELDING**

**FABRICATION** and general repairs to machinery and equipment. Michael Steel Fabricators and Welding Co., Glenmont, N.Y. HO 3-2775. tf

**MERCHANDISE FOR SALE**

**ALUMINUM** combination windows, doors, siding, etc. Finest quality at lowest prices. Taylor Aluminum Products. RO 5-2856. tf

**ANTIQUES** bought and sold at the sign of the Coffee Mill. 67 Adams Pl., Delmar. HE 9-1021. tf

**FUEL OIL:** 2¢ per gal. cash discount. Academy Oil Service, Glenmont. 24-hour service. HO 2-1309. 465-5336. tf

**PIANOS - MASON & HAMLIN**, Knabe, Fischer, Weber and Stark, also fine selections of slightly used pianos. Call A. Andrew Gigliotti. HO 3-5223. tf

**STRAW - HAY**, straw 80¢ per bale, hay 50¢ per bale. 10¢ extra for delivery. Also rye, \$1.50 per bu. A. H. Mead. HE 9-3638. 2t1110

**FULL** length seal coat, size 20, like new. UN 9-6305.

**WANTED**

Listings in Elsmere, Delmar, and Slingerlands. Many recent sales in this area have depleted our inventory.

**O'CONNOR SULLIVAN**

HO 5-2271. Eves. HO 5-1929.

LODGE & HOWARD STS.  
ALBANY, N.Y.

**YOUR TRI-VILLAGE REPRESENTATIVE:**

**JACK VAN OOSTENBRUGGE**



Ted Pepper, Inc.

CHRYSLER • PLYMOUTH • IMPERIAL

613 LOUDONVILLE ROAD  
LATHAM, N. Y. 12110

PHONE 785-4156

**HOME** made quilts and rugs. UN 9-6305. 2t1110

**BEDROOM SET**, rug 12 x 13, dinette table, 4 chairs, curly maple, miscellaneous items. HE 8-3920. 2t1110

**CAMERA**, 35MM Leica M-2, Summaron 35MM F/2.8 Lens, Elmar 50MM F/2.8 Lens, Leica-meter M attached, 1 filter, eveready leather carrying case. New \$520 one year old. Now \$350. Call HE 9-4089 9 A.M. - 12 noon.

**BASEMENT SALE** - November 12 9 A.M.-8 P.M. - Furniture - dishes, clothing, miscellaneous. 9 Murray Avenue, Delmar.

**HOT POINT** electric range, 39", fully automatic, excellent condition. HE 9-2645.

**FRUIT CAKES**: Duncan Hines Old New Orleans fruit cakes in holiday canisters, 2 lbs., \$2.50; 3 lbs., \$3.75. Free delivery in Delmar area. HE 9-2210.

**FULL** size solid maple bed, box spring, mattress, vanity, mirror, also odd dark oak dresser, mirror, reasonable, 756-8914 after 8 P.M.

**NEXT TO NEW SALE**, St. Stephen's Country Fair, November 16 and 17. New and excellent condition items sold for you on consignment basis. For information, call 439-3265 before noon.

**WALNUT** dining room table, six chairs, felt back table pad. 439-6248.

**FIVE-PIECE** bedroom set, bed, chest, double dresser, mirror, night table, glass tops. HE 9-5024.

**SNOW TIRES**, 7:50 x 14, used one season, \$15 pair. HE 9-2948.

**END** tables, two; coffee table, all mahogany. 439-4711.

**WHIRLPOOL** automatic washer 2-speed, 2-cycle \$35, good condition. 439-1809.

**CAMERA** - Super Graphic - enlarger - Omega D-II. Call HE 9-3232 after 5 P.M.

**GARAGE SALE** - Benefit Montessori School, Saturday, November 12, 10 A.M. 33 Center Lane, Delmar.

**WESTINGHOUSE** automatic range, clean, good condition, deepwell, three burners, \$50.

HE 9-3446.

**GERT'S** a gay girl - ready for a whirl after cleaning carpets with Blue Lustre. Rent electric shampooer \$1. Adams Hardware, 380 Delaware Ave., Delmar.

**SNOW** tires, two, 8:25 x 14, Dunlop whitewall, Studded, on Pontiac wheels, used one season, \$30. 439-4848.

**1985** Buick Special 4-door V8, radio, heater, automatic transmission, power steering and brakes. Creampuff. HE 9-2845.

**COATS**, Fleece lined cotton suede, yellow fall coat, size 12. White fur bunny cape. Combination desk & chest. Occasional chair, comforter, air conditioner, Combination TV, radio, record player. Skis and bindings. 439-5066.

**COATS**, camel, olive green, size 16, excellent condition. HE 6-1244.

**IMPORTED** camel hair coat, polo style, size 16, excellent, \$25. HE 9-2575.

**MOVING** to Florida, sacrifice black Alaskan Seal coat. Full length. Size 16. Phone during day, HO 3-7407.

**SNOW** Blower attachment for Toro Power handle, \$25. HE 9-2537.

**SNOW** Tires 6.70 x 15 pair Town & Country, mounted on wheels. HE 9-2537.

**SNOW** Tires, 2, 6.00 x 13, on wheels \$25. 765-2598.

### AUTOMOTIVE FOR SALE



Saab Authorized Dealer

### NEW SALEM GARAGE

New Salem Route 85  
DeWitt and Fred Carl  
- NEW AND USED CARS -  
Telephone RO 5-2702

1958 Saab and a 20 cubic ft. chest freezer, \$100. 765-2254.



**HEATS BEST  
COSTS LESS**

*When You Buy From*

**W. G. MORTON**

DEPENDABLE SINCE 1848

24 HR. SERVICE 438-7821

Werner G. Morton E. R. Smith  
Pres. V. Pres.

**1957** Volkswagen sedan, excellent condition, 31,000 unbelievable, one-owner mileage. Must see to appreciate. \$400; or best offer, cash. Available November 22. 439-5427.

**1958** Ford Squire, recently overhauled. HE 9-2796.

### PETS

**FOR** expert dog grooming, call Judy. HE 6-1445. tf

### WANTED TO BUY

**WANTED** silver dollars, other old coins for cash. Call HE 9-3581. 4t1117

### REAL ESTATE FOR SALE

**LATHAM** - 3-bedroom Colonial, full dining room, recreation room, garage, appealing property, owner anxious. Haley. HO 5-6892. 2t1110

### REAL ESTATE FOR RENT

**FOUR** miles from Feura Bush GE plant: three apartments, 2 or more bedrooms, heated. Adults. 439-4098. tf

**DELMAR** - on bus line, four rooms, upper, heat, hot water, garage and parking space. Furnished or unfurnished, adults preferred. No pets. Call HE 9-5634 after 5:30. tf

### HELP WANTED

**WOMAN** to clean house one day every other week. 439-9409.

**BAKER'S** helper wanted, good pay, good hours. Apply: Delmar Bakery, 4 Corners, Delmar. 2t1117

**FITTER**, experienced, in ladies' store in downtown Albany. Write Box P, Spotlight, Delmar. 3t1110

### SITUATIONS WANTED

**EXPERIENCED** bartender available for private parties. Call 439-9291. tf

**EXPERIENCED**, care of invalid or convalescent. References. HO 3-2562.

### RIDE WANTED

**FROM** Murray Avenue near Rt. 32 to Campus Bldg. #12, 8:20 to 4:30. 439-1155.

*Live High ...*



**GO CLASSIFIED**

**439-4949**

ALL ROADS LEAD TO HALLMAN'S!

# DON'T MAKE A \$300 MISTAKE!

- DEAL WITH THE LEADER
- SEE THE 1967 CHEVYS
- SEE HOW EASY IT IS TO OWN ONE
- SEE THE AREA'S LARGEST CHEVY DEALER
- IMMEDIATE DELIVERY
- NO PAYMENTS TILL LATE WINTER
- WE LEASE (ANY MAKE CAR) FOR LESS

**MARSH HALLMAN  
CHEVROLET, Inc.**

**781 CENTRAL IV 9-5551**

Open Daily 'Til 9 P. M. Friday-Saturday 'Til 6 P. M.

**Where More People Buy For Less!**

### MATERNITY WARD



Need a larger house?  
Call

**De L. Palmer**

Incorporated

Call HE 4-0181

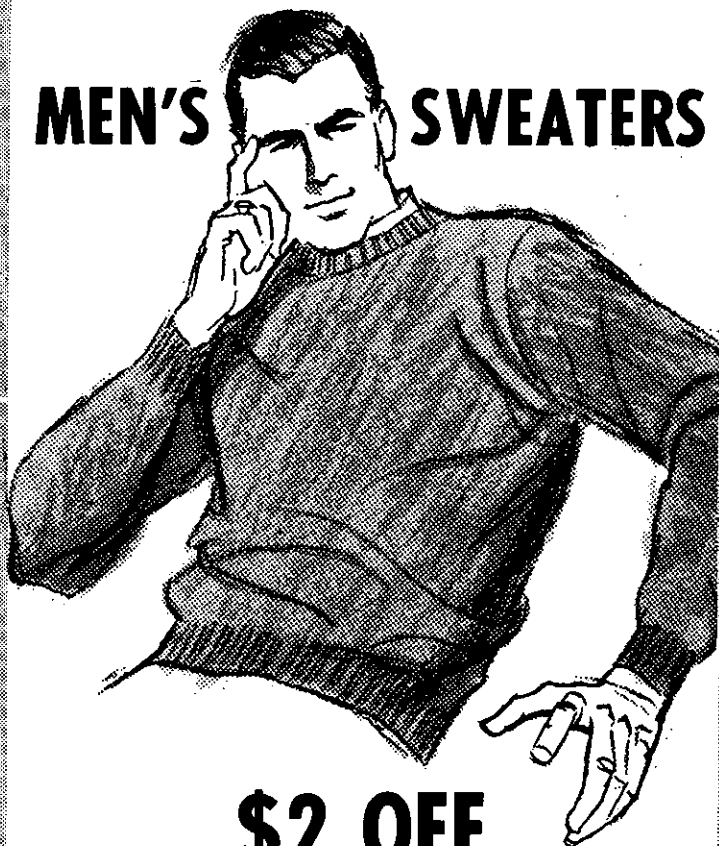


## WEEK-END SPECIAL

(DELMAR STORE ONLY)

THURSDAY • FRIDAY • SATURDAY

## MEN'S SWEATERS



**\$2 OFF**  
**ON ANY SWEATER IN OUR**  
**ENTIRE STOCK**  
**OF FAMOUS BRANDS**

**from 9<sup>95</sup> to 20<sup>00</sup>** (not incl. adv. prices)

- pullovers and cardigans
- wools and blends
- all newest colors
- all sizes

BUY NOW! PAY LATER!  
 USE STEEFFEL'S CHARGE ACCOUNT

**DO YOU NEED NEW DRAPERIES?**  
**DO YOU NEED NEW SLIPCOVERS?**  
**DOES YOUR FURNITURE NEED**  
**RE-UPHOLSTERING?**

**PHONE:**  
**489-4795**

Our experienced, reputable decorators are as near as your phone, and our workrooms were untouched by the fire. Now is the time to lend charm, warmth and dignity to your home or office. We say now because the holiday season is close at hand and true custom work of our caliber is not created overnight.

Our new store, soon to open in Stuyvesant Plaza, is intended to be the "Decorating Capital" of the Capital District.

WATCH FOR OUR GRAND RE-OPENING ON OR  
 ABOUT DECEMBER 10th

**DELIVERY GUARANTEED IN TIME**  
**FOR THE HOLIDAYS!**

*Marcus*  
 FABRICS  
 DECORATORS

Stuyvesant Plaza, Albany

Permit No. 10  
**PAID**  
 U. S. POSTAGE  
 Bulk Rate

Delmar Public Library  
 Hawthorn Ave.,  
 Delmar, N.Y. 12051

