

# Christmas Is Coming to Our Town!

There's something in the air in Bethlehem town! It's far removed from the clang of a cash register . . . it's the look on a child's face as he carried toys into the basement of the Masonic Hall where volunteers will make them "new" for a less fortunate child. It's the smile that comes over a volunteer's face as an elderly shut-in woman calls to say she would like to dress dolls and that she has "plenty of material" and wants to do her share for the White Christmas. It's the grin of a member of the Delmar Camera Club as he comes up with just the right picture for the staging committee to use in illustrating Fra Giovanni's "I Salute You." It's the cheerful song which comes from the heart as young girls deliver posters around the town. It's the cheerful talk of the Clothes Closet committee as they repair and mark clothing donated by the townsfolk. It's the busy chairmen of committees, the cheerful hundreds of volunteers, the little people with the good hearts which make the Town of Bethlehem so big!

Have YOU felt this spirit? If not, then listen . . . for it abounds in our town as we prepare to celebrate the 25th anniversary of the White Christmas. The idea began at that time, 25 years ago, when Mrs. Sidney L. Smith and Roland Truitt felt that a program whereby the towns citizens could share time, talent and worldly goods should be inaugurated. The beginning, which was small, but good, has continued to today's program which includes hundreds of persons.

The clothes closet in the Jr. High School is kept filled and clothes are made available the year 'round. Last year over 1,883 articles were distributed from this closet which is under the care, at this time, of Mrs. Robert Denny and her committee.

Citizens of the town — as we mentioned before — have taken toys to the Masonic Hall where Jack Weaver, of the Senior Citizens, and volunteers from all the churches have worked at refurbishing the toys. Last year nearly 200 such toys made children happy.

Shut-ins are remembered throughout the year by a committee headed by Mrs. Pasquale Pugliese.

Food baskets are prepared by

the White Christmas Committee headed by Mr. and Mrs. Arthur Dill. This committee also determines how the monies will be spent for health care for children here and abroad, with recommendations from the school nurses.

George Foote is chairman of the Board of Directors for the Festival. Other officers are: Secretary, Mrs. Russell Freeman; Treasurer, John Hacker. Board members include: Messrs. Hamilton Bookhout, Charles Lacy, Frank Mack, Robert Taylor, Rolland Truitt and Richard Moomaw. Also, Mr. and Mrs. Roy Gillett, Mrs. Arthur Mc Hugh, and Mr. and Mrs. Sydney Smith.

Col. James Marotta heads the Hospitality Committee which provides the ushers and goodwill at each performance of Silver Bells.

The lobby of the Senior High School will be decorated by a committee headed by Mr. and Mrs. Everett Watson.

The program printing is under the guidance of Mr. and Mrs. Millard Larkin.

Production Committee for "Silver Bells" includes the following: Chairman, Mrs. Warren C. Kimmey; Community relations, Mrs. Perry Dunn; Secretary, Miss Marjory Reid, and Treasurer, John Haker. Mrs. Joseph Stella is in charge of the wardrobe and William Bub heads the Scenery and Staging Committee.

The public will be welcomed and is cordially invited, to share in this — the true spirit of Christmas — provided in a community celebration by the Town of Bethlehem. Program times: Sunday, Dec. 11 at 2:30; Thursday and Friday, Dec. 15 and 16 at 8 p.m. All performances will be in the auditorium of the Bethlehem Senior High School. Admission is free.

# The Spotlight

VOL. XI, NO. 48

DECEMBER 1, 1966

\$1.00 PER YEAR

10¢ A COPY



THE PROCLAMATION: As George Foote looks on (left), Joanne Kimmey receives the White Christmas Proclamation from Bethlehem Supervisor Bertram E. Kohinke.  
Photo by Fran Gardinier

## Proclamation

WHEREAS, our Town of Bethlehem has for the past twenty-five years celebrated its Christmas Festival as a community endeavor, and

WHEREAS, this celebration has united all parts of a town composed of fine residents of widely varied backgrounds, and has received the cooperation and participation of members of churches of all faiths and numerous organizations into a well known and justly acclaimed effort, and

WHEREAS, this annual event has benefitted deserving children in our community by brightening their holiday, and has assured worthy families in our Town a closet to help with their clothing needs and

frequently financial aid toward necessary medical expenses, and

WHEREAS, the needy of foreign nations have also benefitted from the funds voluntarily given the Christmas Festival, and

WHEREAS, by helping the less fortunate, the participants have enjoyed themselves, while providing a rewarding spiritual and educational experience for the people of our Town of Bethlehem,

THEREFORE, I, Bertram Kohinke, Supervisor of the Town of Bethlehem, do hereby proclaim December 15th and 16th in the year 1966 as Town of Bethlehem Community Christmas Festival days.

Bertram E. Kohinke  
Supervisor

# WAREHOUSE SALE

December 5th - December 6th — 9 A.M.-9 P.M.

**Come See**

**Come Save**

Open Daily 9 A.M. to 5 P.M.  
Monday through Saturday  
(Any evening by appointment)

**the Carriage Stop**

ANOTHER  
MAIN-CARE SERVICE

339 Delaware Avenue — 439-2430 — Delmar



**Starting December 12th, the Carriage Stop will be open  
Monday-Friday — 9 A.M.-9 P.M., Saturday — 9 A.M.-5 P.M.**



## Steam & Dry Irons

Model F66

**\$8.88**

**DON'T MISS THIS  
18 - ONLY - 18**

LOOK AT THIS PRICE



## Electric Slicing Knife

Model EK-4

**\$11.88**

**10 - ONLY - 10  
BE HERE EARLY**



## Electric Can Opener

Model EC-18

**\$8.88**

**SAVE - SAVE  
12 - ONLY - 12**

**Just 6**

## Air Conditioners

**Buy Now  
For Next Summer**

**Save 25%**

**1 - ONLY - 1**

## Hi-Boy Hot Air Furnace

125,000 B.T.U.

With Burner and Controls

Reg. Price \$295.00

Sale Price  
**\$225.00**

**L-P Gas**

## Space Heaters

**All sizes at cost**

**Some below cost**

**FULL LINE OF  
COLOR TELEVISIONS  
NOW READY FOR IMMEDIATE DELIVERY  
21'' - 23'' - 25'' Size Screen**

**B**uy For Christmas  
uy Now  
e Sure

**PORTABLES**

**CONSOLES**

# Holiday Sweater



This lacy knit cardigan from Hong Kong is just as fine as it looks. Wool, lined in rayon. White. 36 to 42 \$15.00



Open five nights a week  
from now until Christmas

Don't forget to visit the **SECOND**

## Village Shop

at the Four Corners in Delmar

Always plenty of parking opposite the store in the Delmar Pharmacy (Rexall) parking lot . . . and also in the rear of the Village Shop.

# L. J. MULLEN PHARMACY

256 Delaware Avenue

Elsmere, New York

439-9356

Never a busy signal

## Complete PHOTOGRAPHIC Center

- 24-Hour Black and White Processing Service
- Color Processing Exclusively by Kodak of Rochester
- Photo Supplies: Bulbs, Film, Cameras, Carrying Cases
- AT YOUR SERVICE EVERY DAY OF THE YEAR!

# C.M. GROVER

*Stationers*

10 DELAWARE PLAZA  
Delmar HE 9-4475



CHRISTMAS CARDS  
WRAPPINGS  
TAGS



COMPLETE STOCK OF FINE CANDIES BY

**BARTON'S**  
*boubonniere*  
NEW YORK • LUGANO, SWITZERLAND

PARTY DECORATIONS

WRITING PAPER PEN & PENCIL SETS

1967 CALENDARS & DIARIES

Elsmere Branch US Post Office



*Douglas G. Marone*

DISPENSING OPTICIAN

DELAWARE PLAZA

DELMAR, N. Y.

Open Daily: 10-5:30

Saturday: 10-3:00

Evenings by Appointment

TEL. HE 9-9191

# LONGINES

THE WORLD'S  
MOST HONORED  
WATCH

## Add a pair of diamonds

Your gift problem is solved for years to come when you give this world-honored Longines solid 14K gold mesh bracelet watch. Set with two brilliant diamonds, you can add other diamonds in pairs for her birthday, Christmas, and every joyous occasion. And, being Longines, this watch is as accurate and dependable as it is lovely. Bracelet custom-fitted, of course. **\$165.**

Add a pair of diamonds—\$30 per pair



See our FINE COLLECTION of - Silverware - Pewter - Stainless Steel - Crystal Ware - Christmas Cards

**HARRY L. BROWN** *Jeweler*

## Thistle Gift Shop

363 DELAWARE AVENUE AT 4 CORNERS, DELMAR

Franchised Jeweler for Longines & Wittnauer Watches

## Committee That Cares

As the people of the Town of Bethlehem are preparing for the 25th Celebration of "The White Christmas Festival," "The Committee that Cares" is remembering its servicemen in Viet Nam. Each month packages and messages have been sent to the 17 boys from this area serving in the war zone. The Committee requests names of any boys not listed below:

PFC Wayne W. Boyer, Thomas L. Ralston, Ensign Fritz J. Kass, Jr., PFC Neil E. Simpson, 1st Lt. Larrie G. Sutliff, PFC Richard L. Shultes, PVT Thomas W. Holmes, Edward E. Van Alstyne, Jr., PFC Peter Glenck, PFC Robert L. Shultes, 1st Lt. Henry McCauley, Jr., PFC Anthony J. Maxstadt, 1st Lt. Rich-

ard G. Llope, L/Cpl, Richard A. Chase, PFC Roger Spaulding, S/A Thomas Burleigh.

For Thanksgiving, representatives of the Progress Club sent small canned hams with cheese spreads and crackers. Again this year - for Christmas, representatives of Nathaniel Adams Post American Legion have sent packages with gifts of nail clippers, a miniature game, assorted envelopes of Tru-Ade to improve the water, paper back books, metal mirrors, miniature tools and a Christmas message telling of our community's concern and support of their efforts to bring lasting peace to the world.

The many individuals and organizations contributing \$25 per year are listed below:

Nathaniel Adams Blanchard Post American Legion, Bethle-

### Mid-Week Family Suppers

6:00 p.m. - Every Wed. Eve. in Advent  
Just bring covered dish - No Charge.

### Mid-Week Advent Services

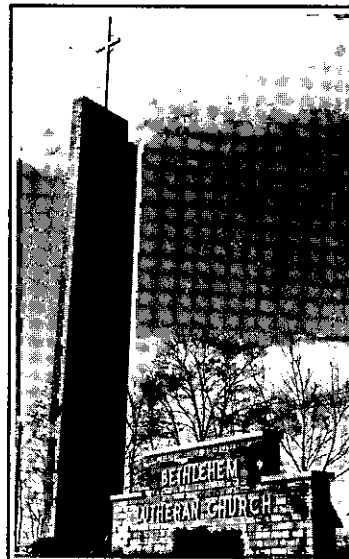
7:30 p.m. - Every Wed. Eve. in Advent

### Sunday Church Services

9:30 a.m. - 1st Service of Worship  
9:30 a.m. - Sunday School  
9:30 a.m. - Teen-age Bible Class  
11:00 a.m. - 2nd Service of Worship

## We Serve All Lutheran Synods

Paul H. Gassmann, Pastor  
111 Elm Ave., Delmar  
439-6217



## The Ideal Christmas Gift A CARPETED ROOM

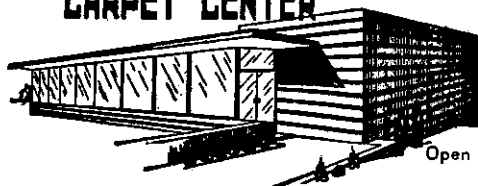


Come and See

## Your Purchase Taken from ROLLS of Carpeting!

(Not Samples)

## CARPET CENTER



ROUTE 9  
SARATOGA  
SIDE  
NORTH OF  
LATHAM  
ST 5-8595

Open Eves 'til 9 P.M.,  
Sat. 'til 6 P.M.

hem Memorial Post VFW, Blanchard Post American Legion Auxiliary, Bethlehem Lodge of Elks, Delmar Progress Club, Bethlehem Lions, Town of Bethlehem, Bethlehem Kiwanis Club, Bethlehem Rotary, Bethlehem Clergy, Bethlehem Chamber of Commerce, Elsmere Fire Auxiliary, Keyette's (Beth. Central Sr. High School) Bethlehem Business & Professional Women's Club, Selkirk Fire Auxiliary, Delmar Camera Club, Delmar Fire Auxiliary, Delmar Reformed Church.

Monthly meetings are held the 1st Thursday of each month at 7:30 p.m. in the Nathaniel Adams Blanchard Post American Legion Hall in Elsmere. Interested people are welcome to spread the true Bethlehem Spirit all year as well as Christmas.

## Party

The Albany Graduate Chapter of the St. Rose Alumnae Association will hold its annual "After Shopping Christmas Cocktail Party" on Thursday, December 1, at the Northway Inn at 8 p.m. There will be music, door prizes, and Hors D'Oeuvres.

Co-chairmen for this event are Mrs. Russell L. Topping and Mrs. John M. O'Connor. Mrs.



**Garden Shoppe**

Feura Bush Rd., Glenmont, N.Y.  
HE 9-1835  
Mon-Sun: 9 A.M. to 9 P.M.

*Santa's coming with gifts for the Kiddies!*  
Saturday, Dec. 10: 1-6 P.M. - Sunday, Dec. 11: 1-5:30 P.M.  
FREE Coffee and Donuts for Mom and Dad!

<b>TREES -</b> The best available nursery grown and sheared to perfection.	<b>LIGHTS &amp; ORNAMENTS -</b> Twinkling, crystal-jewel and conventional lights. Glass and satin ornaments.
<b>WREATHS -</b> Scotch Pine, Balsam, Fir and Pine Cone creations.	<b>CANDLES -</b> A large selection of decorative candles, fragrance candles and beautiful handcrafted candles.
<b>ROPING &amp; BOUGHS -</b> Pine and Laurel roping. Balsam, Scotch Pine, Mugho Pine and Juniper Boughs.	<b>DECORATING MATERIAL -</b> Everything for the Home or Institutional Decorator.

EVERYTHING FOR THE DO-IT-YOURSELF

*Fresh*

**BARRICINI**®

*Candies*

NOW AVAILABLE AT:

**Elsmere Pharmacy, Inc.**

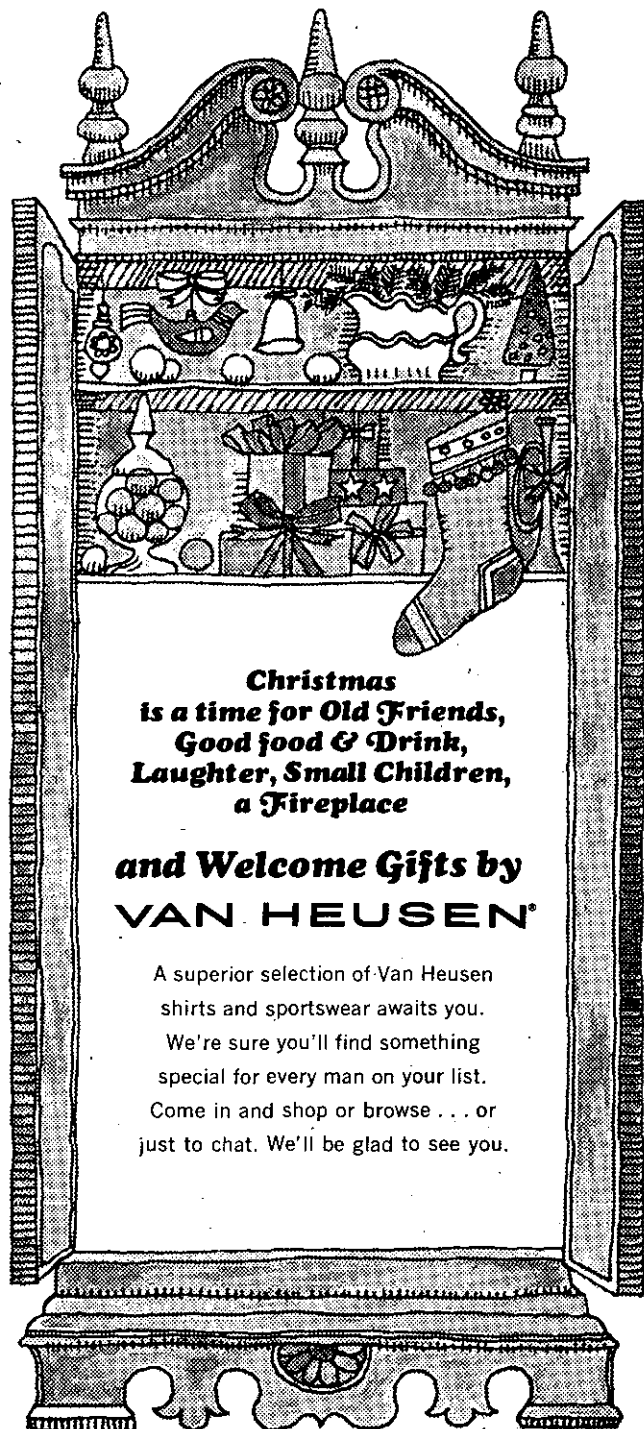
99 Delaware Ave., Elsmere, Next to Albany Public Market  
PHONE 439-5491

**von Bank's  
TV SERVICE  
HE 4-5887**

Quality—Responsibility—Honesty

**JAMES W. BARTLEY  
and SONS**

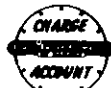
Plumbing, heating & electric  
water pump sales & service  
Clarksville PO 8-2230



*Paul Mitchell's*  
**MEN'S WEAR**

**99 DELAWARE AVENUE  
ELSMERE, N.Y.  
Phone 439-3218**

Convenient  
Layaway



Theodore A. Burke is in charge of Arrangements; Mrs. Timothy P. Caulfield, Door Prizes; and Mrs. James D. Purcell, Decorations.

## Getz Named

"Linking the interests of young men with the experience of top successful professionals," is the objective of a new project being

launched by the Fort Orange-Uncle Sam Council, Inc., Boy Scouts of America, under the Chairmanship of Colin W. Getz, General Manager of the Eastern Area of the New York Telephone Company.

At a luncheon meeting recently, Council President Raymond H. Siek, Manager of the Green Island Ford Plant, announced Mr. Getz's appointment. Others pre-

## This Year give Musical Gifts



COMPLETE STOCK OF  
BAND INSTRUMENTS

- Olds
- Conn
- Bundy
- Selmer
- Gibson Guitars
- Ampeg Amps
- Ludwig Drums
- Slingerland Drums

Largest selection of musical accessories and supplies in the City - also many hard-to-find musical items.

JOHN KEAL'S

## MODERN MUSIC CO.

(Formerly Buckley's) 22 Central Avenue, Albany  
Phone 434-5214

**We'll make your  
motor  
sing**



- \* Engine Tune-up
- \* Front End Alignment
- \* Automatic Transmission Service
- \* Modern Equipment
- \* Skilled Mechanics

## BAILEY'S GARAGE

Phone Delmar HE 9-1446  
Oakwood Rd., Elsmere

sent at the meeting were Russell E. Decker, building contractor, and Elwood D. Hollister, Assistant Executive Director of New York Higher Education Assistance Corp., who are presently associated with the Council's Explorer Program, and Raymond P. Logan, Scout Executive.

Mr. Siek stated that Mr. Getz and Council officials will form a Project Committee of top industrialists, business and professional leaders from throughout the Council's three County area. Prospective sponsors of Explorer Posts, (made up of 15 to 25 young men interested in a particular field) will be approached among the area's leading industrial firms, business houses, and professional associations.

The project will be launched immediately, Mr. Getz announced.

## Meeting

Onesquethaw Chapter #818, Order of the Eastern Star, will hold its regularly stated busi-

ness meeting on Wednesday, December 7, at 8 P.M. at the Delmar Masonic Temple.

The annual election of officers and all Committee Reports will be given at this time. Worthy Matron, Jean Herbst, and Worthy Patron, James Herbst, will preside.

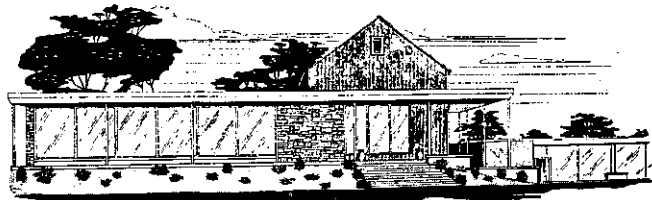
Following the meeting there will be a Christmas party in the temple dining room. All members are requested to bring a gift for the grab bag.

## Telco Hour

The Bell Telephone Hour presents "The Cleveland Orchestra: One Man's Triumph" in color on Sunday, December 4, at 6:30 p.m. over WRGB.

Informal studies of conductor George Szell and the Cleveland Orchestra, in rehearsal and performance, form the basis for the hour-long program. One sequence shows Szell conducting a movement from Beethoven's "Fifth Symphony" at the opening of this year's concert season in

# Verstandig's Florist



454 Delaware Avenue

Delmar, New York

Phone HE 9-4946

*Complete Selection of  
Christmas Decorations,  
Flowers and Gifts*

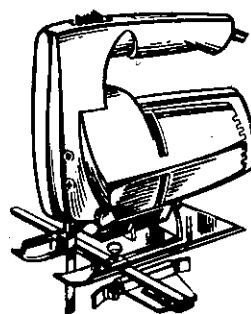
STORE HOURS: Monday to Friday: 8-9; Saturday: 8-6;  
Sunday: 9-5

The buying power of 1300 PRO hardware stores makes possible these outstanding bargains.

**PRO** HARDWARE STORES

# Christmas Sale

Don't miss these PROven values from the *HOMEMAKERS Journal*



**LOOK**

**PROVEN**

**SABRE SAW**

**SALE PRICED**

**19<sup>95</sup>**

**ONE YEAR REPAIR GUARANTEE**

Powerful 3-amp heavy duty motor—30% faster full 1" stroke action. UL approved.

**FABULITE UNDER-CABINET FLUORESCENT LIGHT WITH OUTLET**



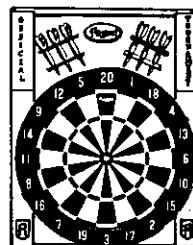
**30% OFF**

**LOOK**

**6<sup>98</sup>**

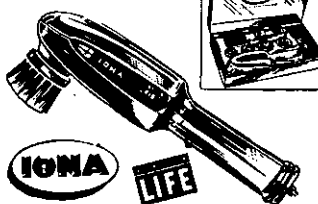
Bright dramatic indirect lighting. Easily installed behind valances, under tables, over work areas. 5 1/2" Wide, 18" Long.

**COMPLETE DART GAME KIT SPECIAL**



**3<sup>33</sup>**

Dart game, 20-point clock game and baseball game all on an 18" English paper-wound board. 6 brass darts and game rules.



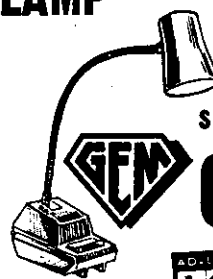
**IONA LIFE POWERFUL ELECTRIC SHOE POLISHER KIT**

**LOW PRICE**

**14<sup>88</sup>**

The family will love it—no mess, no stained fingers. Get a better shine the modern way. Powerful super torque motor; detachable 6-ft. cord.

**ALL PURPOSE GENUINE HIGH-INTENSITY LAMP**



**SPECIAL**

**6<sup>66</sup>**

**LOOK**

Spot light, wall light, desk light, nite lite. Heavy duty transformer. for longer life.



**DELMAR LUMBER & BUILDERS SUPPLY inc**

**340 DELAWARE Ave • Phone HE.9-9968**



# Freihofer's

## FAMOUS BATTER-WHIPPED SUNBEAM BREAD

PHONE **HO 3-2221**

FOR DAILY HOME DELIVERY ... OF DELICIOUS  
BREAD, ROLLS, CAKE

### FEATURE OF THE WEEK

## Anadama White Bread 37c

A New England favorite for many years — a genuinely wholesome, good eating white bread that many feel is the best loaf of bread available today!

#### THURSDAY

Dec. 1st

- ☐ PINEAPPLE CREAM PIE .....89c
- ☐ Cinnamon Crunch Buns .....44c
- ☐ Pineapple Cheese Cake .....79c
- ☐ Glazed Donuts .....44c
- ☐ Blueberry Muffins .....49c
- ☐ Cinnamon Raisin Bread .....39c
- ☐ ● Old Fashioned Bread .....35c

#### FRIDAY

Dec. 2nd

- ☐ RASPBERRY PIE .....79c
- ☐ Apple Nut Buns .....39c
- ☐ Chocolate Eclairs .....59c
- ☐ Jelly Donuts .....44c
- ☐ Bran Toasties .....39c
- ☐ Salted Rye Bread .....33c
- ☐ ● Thin Sliced Square Bread 28c

#### SATURDAY

Dec. 3rd

- ☐ COCONUT CUSTARD PIE 79c
- ☐ CHOC. FUDGE LAYER .....89c
- ☐ Honey Pecan Ring .....59c
- ☐ Dunketts .....39c
- ☐ ● Old Fashioned Donuts .....39c
- ☐ Sliced Pumpernickel .....33c
- ☐ ● King Size Bread (in bag) 33c

#### MONDAY

Dec. 5th

- ☐ LEMON MERINGUE PIE .....79c
- ☐ Lemon Buns .....44c
- ☐ California Cheese Cake .....69c
- ☐ Cream Puffs .....59c
- ☐ Corn Toasties .....39c
- ☐ Unsalted Bread .....33c
- ☐ ● Sliced Italian Bread .....29c

#### TUESDAY

Dec. 6th

- ☐ ALMOND TOFFEE RING .....79c
- ☐ BLACKBERRY PIE .....79c
- ☐ Streussel Coffee Cake .....49c
- ☐ Banana Sheet Cake .....59c
- ☐ Danish Donuts .....44c
- ☐ Canadian Oat Bread .....33c
- ☐ ● Rite Diet Bread .....35c

● Indicates items available every day. The above list is not a complete list of available items. For further information ask your Routeman or call the Bakery.

### Anadama Bread

Q—What makes Anadama Bread so special?

A—Because of the ingredients: unbleached flour, sweet creamery butter, honey, cane sugar, whole milk, plus Freihofer's baking know-how—

### Anadama Bread

Q—Is it new?

A—New in the capital district—a New England favorite for many years—

### Anadama Bread

Q—Where and when can I buy it?

A—Available daily from your route man or at your favorite store—

### Anadama Bread

Q—Why should I try it?

A—We think you owe it to yourself and your family!

# Freihofer's

Cleveland's Severance Hall.

Sharing the Telephone Hour spotlight is the Cleveland Orchestra Chorus under the direction of associate conductor Robert Shaw. The 150-voice group will be heard rehearsing Beethoven's "Missa Solemnis."

Other sequences show Szell and the orchestra's concertmaster preparing Berg's "Violin Concerto," and Maestro Szell and associate conductor Louis Lane discussing a planned recording.

## VA Gift Shop

The Christmas Season is fast approaching with all its many tasks of shopping for the right gifts, wrapping and delivering them in time for Christmas day. This task is made easier for the Veterans at the VA Hospital in Albany each year by a Gift Shop sponsored by the American Legion Auxiliaries. The Gift Shops are started early in December so gifts will reach the families of Veterans before Christmas.

Mrs. Herbert Hafley, the Rehabilitation Chairman for Unit 1040 of the American Legion Auxiliary, announced that the members of her Unit are already making elaborate plans for the Christmas Gift Shop that will again be established at the local Veterans Hospital.

The Gift Shop will be completely stocked with attractive presents for the veterans to choose from for their families at home. Some of these men have been confined to the hospitals for a long time and are unable to get out and shop, so they are appreciative of the opportunity to remember their loved ones.

The public is invited to attend the gift shop "Open House" on Sunday, December 4th, from 2 to 4 p.m., on the third floor. Mrs. Hafley and the Unit members hope you will take this opportunity to drop by and see for yourself true Christmas spirit in action.

Subscribe to the Spotlight





# how much cake should there be in a fruit cake?

Not much!  
In fact, we think just enough  
to hold the fruit and nuts in place.  
You see, our Jane Parker Fruit Cake is over 2/3 fruit and nuts.

Every cake is just bursting with  
cherries imported from France, pineapple from the Far East,  
citron from Italy, sun-drenched raisins from California  
and meaty pecans from the South.

**AND ONE OTHER THING YOU SHOULD KNOW:**  
It's the same wonderful cake... at the same low price as last year.  
Isn't that good news?

Is it any wonder Jane Parker Fruit Cake  
is America's most popular Fruit Cake?  
Is it any wonder it's become such a favorite gift item?  
Is Jane Parker Fruit Cake a good reason for shopping A&P?  
It's one of many.

COPYRIGHT © 1966, THE GREAT ATLANTIC & PACIFIC TEA CO., INC.

## DOWN-TO-EARTH LOW PRICES .. PLAID STAMPS AND YOU CAN



PLAY  
3 OF A KIND

# WIN \$1000 CASH!

SIMPLE TO PLAY ... EASY TO WIN! GET YOUR FREE CARD  
AND TICKETS AT A&P. NO PURCHASE NECESSARY.  
ANOTHER \$1000 WINNER MRS. A. KORKIN, PITTSFIELD, MASS.

### \$1000 WINNERS

Miss S. Marsche, Feura Bush, N. Y.  
Mrs. N. LaBombard, Sch'dy, N. Y.  
Mrs. S. Ducharme, Chazy, N. Y.  
Mrs. H. Morris, Poughkeepsie, N. Y.  
Mrs. P. Crannell, Glens Falls, N. Y.  
Mr. T. Powers, Albany, N. Y.  
Mrs. J. Geiger, Delmar, N. Y.

### G.E. PORTABLE COLOR T.V. WINNERS!

Mrs. E. Warner  
Catskill, N. Y.  
Jean Wichmann  
Chatham, N. Y.  
Mrs. T. Pytell  
Albany, N. Y.  
Mrs. M. Rutherford  
Ft. Edward, N. Y.

SUPER-RIGHT QUALITY HEAVY WESTERN STEER

## STEAKS

SIRLOIN  
STEAK

CUT THICK OR THIN lb.

# 88¢

NONE  
PRICED  
HIGHER

PORTERHOUSE STEAK lb.

# 98¢

"SUPER-RIGHT" 14 TO 18 POUND SHORT SHANK COOKED

## SMOKED HAM

SHANK  
PORTION  
lb.

# 47¢

BUTT  
PORTION  
lb.

# 57¢

BUTT  
HALF lb.  
SHANK  
HALF lb.

# 67¢

# 57¢

NONE PRICED HIGHER

### PORK CHOPS

### FRESH PICNICS

Super-Right  
Quarter Loin  
Super-Right  
Pork Shoulder

lb. 67¢

lb. 39¢

## Thrifty, Dependable Groceries!

### ANN PAGE HONEY

### DETERGENT

Tops Liquid  
Pink-Mild

3 lb. jar 99¢

Qt. Bot. 39¢

### GREEN PEAS

Del Monte

4 1 lb. 1oz. cans 89¢

### LUNCHEON MEAT

Danish  
Champ

3 12 oz. cans \$1.

### MARGARINE

Ann Page In  
Corn Oil Quarters  
Crest

2 1 lb. pkgs. 59¢

### TOOTHPASTE

Bathroom

Med. Size 29¢

### SCOT TISSUE

New  
From A&P

4 2 ply rolls 49¢

### SAIL CLEANSER

Campbell's

2 14 oz. cans 25¢

### VEGETABLE SOUP

POST

3 10 1/2 oz. cans 41¢

### ALPHA BITS

2 14 oz. pkgs. 85¢

PRICES EFFECTIVE WED. THRU SUN. DEC. 4th

## Same Wonderful Cake, Same Low Price As Last Year!

# Jane Parker Fruit Cake

Over 2/3 Fruit & Nuts



5 lb. Cake

# \$3.99

2 lb. Cake

# \$1.69

1 1/2 lb. Cake

# \$1.59

Be a merry Santa!

## GIVE PLAID STAMP GIFTS!

### \$100 WINNERS



F. Sprague  
Pt. Henry,  
New York



A. Humbert  
Ft. Plain, N. Y.



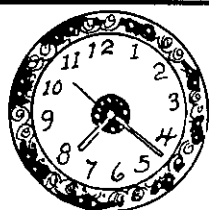
R. Brust, Jr.  
W. Sand Lk.  
New York



M. Failing  
St. Johnsville  
New York



O. Phinney  
Lk. Placid  
New York



This Week Only . . .

**WALL CLOCKS**

Reg. \$19.95

**ON SALE \$14.95****D. Le-Wanda**

Your Trusted Jeweler

Delaware Plaza Shop. Ctr.  
HE 9-9665

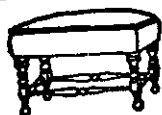
OPEN 10 A.M. TO 9 P.M. DAILY

**DAN & BETTY DRYDEN'S  
SKI SCHOOL**For boys & girls ages 7-15  
Saturdays - January thru  
March. All day instruction,  
practice, fun.Transportation from Al-  
bany and Slingerlands  
to ski areas provided.

For information, rates

phone **PO 8-2126** evenings**SUBSCRIBE TO THE SPOTLIGHT****BURRICK FURNITURE COMPANY**

560 DELAWARE AVENUE



ALBANY 9, NEW YORK

PHONE 465-5112

Dear Friends and Future Friends in the Tri-Villages:

We have been at 560 Delaware Avenue (Just past the Thruway overpass), Albany, for three years. We moved from our former location because of the South Mall project.

You, the readers of the Spotlight who live in the Tri-Village area, have made these past three years very happy ones for us. In return, we are trying to give you the very best 'name' furniture for less money, due to our low overhead.

Many of you have been asking for furniture and accessories which we did not stock. We are now correcting that situation. **NOW - YOU WILL FIND THAT WE HAVE A BEAUTIFUL STOCK OF PINE FURNITURE.** We hope that you'll come in and see these new additions very soon.

So - we invite you to continue to make suggestions so that we can carry the furniture styles that you want most.

Sincerely,

David J. Burrick  
Harold Riegelhaupt**Pancakes  
Unlimited!**

The members of the Kiwanis Club of New Scotland will hold their annual Community Pancake Breakfast on Sunday morning, December 4, at the Toll Gate Restaurant on Route 85, Slingerlands, between 7 and 11:30 a.m.

Many regular patrons look forward to this event each year which includes a substantial early morning breakfast of fruit juice, golden light pancakes with plenty of butter and syrup, sausage and coffee.

In addition to this, a congenial meeting place in a most pleasant setting with friends and neighbors adds to the enjoyment of this hearty breakfast and provides a very memorable occasion.

The cost is nominal - \$1.50 for adults and \$1.00 for children. All food will be prepared and served by the men of the New Scotland Kiwanis Club. Proceeds from this event will be used for Kiwanis Club activities and youth assistance programs.

**Miss Newell  
Honored**

Gladys E. Newell of Delmar was elected president of the 100,000-member New York State Teachers Association recently at the organization's annual House of Delegates convention at the Hotel Syracuse in Syracuse.

Also elected were first vice-president Donald O. Nixon of Lockport and second vice-president Emanuel Kafka of West Hempstead.

Miss Newell, a teacher and social studies supervisor at Bethlehem Central School in Delmar, has been the Association's first vice-president for the past two years and was on its board of directors from 1950 to 1962. She helped found and served as president of both the Corinth and Bethlehem Central Teachers Association. She was president of the Albany County First Supervisory District Teachers Association as well as head of

**PRICE GREENLEAF**

**OPEN SUNDAY: 10 A.M.-4 P.M.**

**Open nights till 8**

**Monday through Friday**

# CHRISTMAS DECORATIONS

**LARGE SUPPLY — DIFFERENT — UNUSUAL**

Our store is now turned into a Christmas trim Shop. We have everything. We buy from importers around the world.

## MINIATURE

*Tree Lites*

**\$2.29**

- 30 Lites (Indoor or Out)
- Replaceable bulbs

Plus a large selection of other miniature lights



## STYROFOAM -

Balls, Cones, Discs, Spangles, Blocks, Pins — in fact, everything for the do-it-yourselfer!!

## CHRISTMAS TREES (cut)

SCOTCH PINE

BALSAM

SPRUCE

Plantation Grown, Sheared, Hand Picked — We have the fullest trees in the area!



### ROPING

Princess Pine 59¢ yd — Laurel and Pine 45¢ yd.

### BOUGHS

—Long Needle  
—Balsam

Bunch

**50¢**

### RED RUSCUS

Red Leaves  
For window boxes, etc.

Bunch

**39¢**

THE ARISTOCRAT OF ARTIFICIAL TREES

## SCOTCH PINE

7 FT. Reg. \$32.50

**Now \$27.95**



This tree is durable, extra full, safe with lights, will not discolor, crush-proof, mildewproof, easy to shape, decorate, and store.

- Candles
- Wrappings, Paper
- Poinsettias, art.
- Wreaths
- Snow Men
- Santa Claus
- Bows
- Tree Tops
- Stockings
- Candles, Lights
- Garlands
- Satin Balls
- Plastic Balls
- Glass Balls
- Light Sets
- Fruit
- Icicles
- Matches
- Tree Skirts
- Angels

Plus Many More Decorations  
**STOP IN AND BROWSE**

## ARTIFICIAL CHRISTMAS TREES

Also 6 ft. and 4 ft.

## HAVE A 'HEE-HAW' CHRISTMAS WITH US!

Horatio Brown is coming back! Stop in and say, "Hello," to him. (Horatio will be arriving any day now!)



New Hours:

8 to 8 — Mon-Fri

Sat: 8 to 6

Sun: 10 to 4



14 Booth Rd., Delmar (Off Delaware) Opposite A&P  
**FREE DELIVERY** **PHONE HE 9-9212**

# Come to our Bethlehem Office. You might leave with a Polar Bear.

City & County Savings Bank's Bethlehem branch is just over five years old, and approaching the \$10,000,000 mark in deposits.

If your next deposit puts us over that mark, you get the giant plush polar bear.

If it doesn't, you'll still receive a 5% dividend on your savings.\* Just like 5,361 of your neighbors do — at the *only* savings bank in the community.

Walk in, or drive up. See one of our friendly Bethlehem office employees. Add to

your savings account or open one. Do it at just the right time, and you'll have something extra to show for it — *besides* your passbook.

\*4½% a year regular, plus ½% extra anticipated.

## City & County Savings Bank

*Your Community Bank*

Member Federal Deposit Insurance Corporation

### Bethlehem Office

163 Delaware Avenue  
Opposite Delaware Plaza  
Delmar, New York 12054



NYSTA's Eastern Zone.

In addition Miss Newell is active in the League of Women Voters, New York State Council for the Social Studies and its Capital District Chapter, Citizens Committee for Clean Waters, State Education Department Scholarship Examination Committee, and the Council for World Affairs.

Over the years a number of organizations have honored Miss Newell with awards and scholarships: Holyoke College, Bethlehem Business and Professional Women's Club, State University Alumni, National Honor Society, and Maxwell School of Citizenship.

## At School

Steven Ferguson, of the Mechanics Exchange Savings Bank, has completed The School of Special Studies on Mortgage Lending at Stratford, Conn. This is a special course in Residential Mortgage Investment sponsored by the National As-

sociation of Mutual Savings Banks. There were 107 bankers from the eastern United States attending this course.

Mr. Ferguson has been with the Bank since 1962 and resides with his wife and daughter at 619 Second Avenue, Watervliet, N.Y.

## LETTER

Dear Sirs:

Thank you so much for the notices you have inserted for our Bethlehem Garden Club this fall. It is most helpful, as most of our members read the Spotlight, and often our plans change from one meeting to the next. Your Spotlight is a sure way to let them know of our changes.

Our next meeting is December 7. I hope I am on time to have the following in your December 1st issue if you have room.

*The Bethlehem Garden Club will hold a workshop for its next*

**Myers**

DOWNTOWN, ALBANY

for your Christmas shopping convenience, will be open every night 'til 9 P.M. Mon. thru Sat.



**Famous Brand Name  
COLONIAL FURNITURE**

**Always Spacious Parking**

**HOUSE of MAPLE Furniture**

**LATHAM - Route 9  
JUST SOUTH OF COHARLES**

**CONVENIENT BUDGET PLAN**

**Open Evenings 'til 9 P.M. - Saturday 'til 5 P.M.**

**Easy Parking in Front of Store**

*Make it an Early American Christmas GIVE FURNITURE*



## SLINGERLANDS MARKET

1526 N. Scotland Rd., (next to Fire House)  
Slingerlands, New York  
(We reserve the right to limit quantity)

**TRIM-CUT  
meats**

TABLERITE  
**CHUCK STEAK**

lb. **47¢**

TABLERITE  
**CHUCK ROAST**



Middle Cut  
lb. **43¢**

TABLERITE BONELESS  
**Boston Roast**  
lb. **89¢**

TABLERITE  
**STEW BEEF**  
lb. **79¢**

TABLERITE  
**Chuck Roast** 1st Cut lb. **39¢**

meeting. Members will meet at the Library at 9:00 a.m. on Wednesday, December 7, and go by car to the Community Room of the Quality Bulb and Garden Center on Rt. 7 (Troy-Schenectady Road). An all day workshop for making Christmas decorations will be held.

Thank you.  
Mrs. Douglas P. Bridge

## Meeting

The Creative Writing Workshop of the American Association of University Women still meet at 8 p.m. on Monday, December 12, at the National Commercial Bank, 343 Delaware, Delmar.



Spotlight Classifieds  
Tell The World!!!

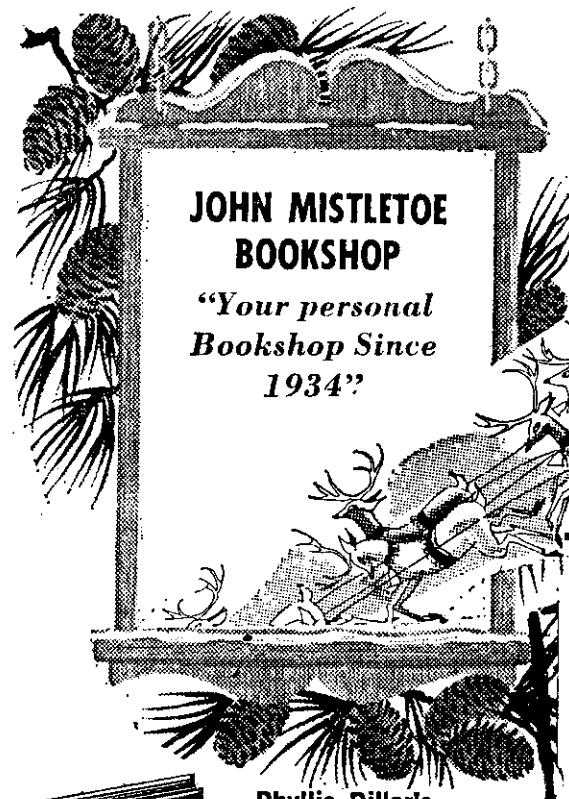


BRIGADIER GENERAL WILLIAM M. MANTZ, Commanding General, U.S. Army Natick Laboratory, welcomed Harvard University ROTC cadets (l to R) Richard D. Gibbs, Richard L. Cooke, and Barry A. Wingard during the cadets' recent cross-Boston field trip to view and broad scope of scientific research conducted by the huge Army laboratory. The cadets, eager to learn more about the large variety of assignments open to them after graduation from the Army ROTC program at Harvard, were impressed by the laboratory's exciting new discoveries in irradiated foods, stress tests of equipment-laden soldiers and startling new paratroop equipment. Cooke, a native of Chattanooga, Tenn., is the Cadet Battalion Commander. Cadet Gibbs, from Delmar, N.Y., is a freshman, just beginning his studies at Harvard under the Army ROTC Scholarship Program. Cadet Wingard, also a freshman, is from Johnstown, Pa.

SHOP DOWNTOWN  
SHOP T. ARTHUR COHEN

**Step out in comfort...**  
**Step out in Style**

There is one and only one shoe that



## JOHN MISTLETOE BOOKSHOP

"Your personal  
Bookshop Since  
1934"

### Phyllis Diller's Housekeeping Hints

By PHYLLIS DILLER

A wild, hilarious spoof of all the books intended to be helpful to the housewife, on such matters as sewing, shopping, cooking, diets, wardrobe, personal grooming, decorating, entertaining. Illustrated with drawings, photos. (DD) \$2.95

### The American Past

Expanded 1966 Edition

By ROGER BUTTERFIELD

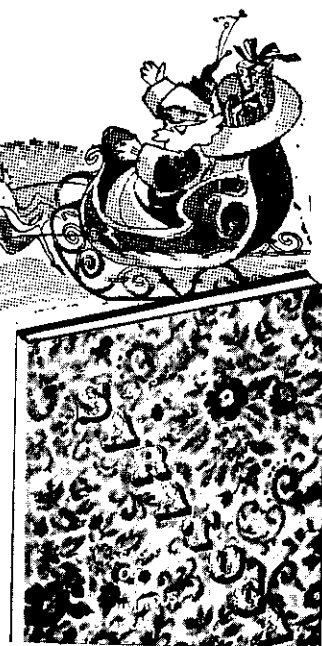
More than 150,000 copies of the 1947 edition of this pictorial history of the United States have been sold. Another decade has since passed and this new volume adds these years to the original text together with additional illustrations. (SS) \$8.95

### The Jury Returns

By LOUIS NIZER

America's most famous trial lawyer follows his *My Life in Court* with four explosive, pre-

"a complete selection  
of books for  
Christmas giving 1966"



### Saratoga

Saga of an Impious Era  
By GEORGE WALLER

The whole story of the fabulous health and pleasure resort in New York State and its times, told in lively text and over 300 photographs. A legend of grandeur, excitement and intrigue has emerged from Saratoga, and George Waller evokes it all, dating back to the times when Indians called the healing waters of the mineral springs "Medicine Springs of the Great Spirit." Saratoga is high-stepping horses, band concerts, and grand hotels. It is famous personalities, bizarre characters, racy and humorous anecdotes in the atmosphere of horse races, lavish casinos, spas, and mansions. It is close-ups of Diamond Jim Brady, Lillian Russell, J. P. Morgan, others. 9x12". (PH) \$12.95

**My Kind of Country**

comfort.

Available in Black suede,  
Tan suede, Holly red,  
Green stone, Black,  
Otter, Navy blue  
and Lama Calf  
**\$23.95**



**GLADE**  
Last No. 22

**T. Arthur Cohen**

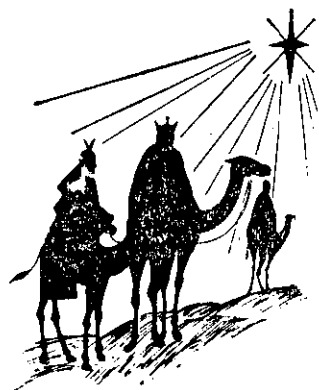
• SHOE SPECIALISTS •

Open Thurs. 'til 9 - Open Sat.  
81 Chapel St., opp. Ten Eyck

Park 'n' Shop Member  
Albany, N. Y.

*As people all over the world found  
a good way of life when Christ was  
born in Bethlehem many years ago,  
we have found a good life in our  
Bethlehem—where friendly people are  
served by friendly merchants, where  
service is a by-word.*

Watch for a star on these holidays of 1966.  
You will see it shining over Bethlehem.



Holiday Greetings from the  
Bethlehem Chamber of Commerce

**THE JURY  
RETURNS**  
MY LIFE  
IN COURT

of Paul Crump, a convicted murderer, and establishes moral rehabilitation as grounds for clemency. He gives a shocking study of the moral depravity and legal confusion that infest divorce. In the Roy Fruehauf case, Mr. Nizer examines the intricacies of the concept of "intent to commit a crime." He fights for radio and T.V. personality John Henry Faulk, whose career and livelihood had been destroyed by slander and blacklisting. In these cases, he depicts the human drama, indecision, and precautions of the American system of justice. (DD) \$6.95

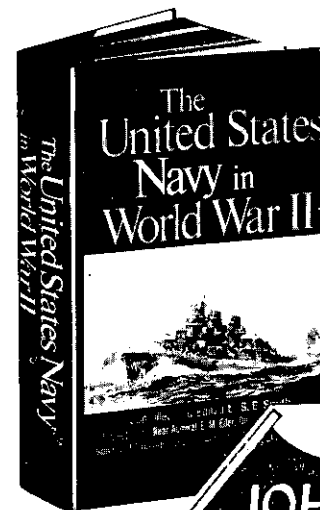
ghost stories, tall stories and regional history are all included in this collection of over 50 pieces of the author's writings about New York State. They span a period of 30 years and reach in area from Niagara to Montauk Point. (MCK) \$6.95

**THE CHRISTMAS STORY**  
MARGUERITE NORTHRUP, Ed.  
A Metropolitan Museum of Art Publication. Accounts from Matthew and Luke are combined with paintings and wood-cuts of the 15th and 16th centuries. Full-color reproductions of paintings by Fra Angelico, Bosch, others. 12 full-page color plates, 16 in black & white. 32 pages. 8 1/2 x 10 1/4". (NYGS) \$3.75

**A Christmas Memory**  
By TRUMAN CAPOTE  
This beautiful story evokes Alabama "coming-of-winter" mornings, "fruit-cake weather" and the joys of Christmas preparations shared by a small boy and an aging spinster. A gift edition of an autobiographical story that first appeared in *Breakfast at Tiffany's*. Boxed. (RH) \$5.00

### The United States Navy in World War II

S. E. SMITH, Editor.  
A superb one-volume narrative history of the mammoth conflict that took place on the waters of the globe, told by the men who participated in it and by naval experts and newspapermen. With the cooperation of the Navy Department and celebrated contributing authors, Mr. Smith selected only those illuminating pieces—many of them eye-witness—which preserve the essence of an action or campaign. The material is arranged to give a comprehensive view of the Navy's part in World War II from the first strike at Pearl Harbor to the end of the conflict. Introduction by Rear Admiral E. M. Eller, Director of Naval History. Photos & maps. 900 pages. (MOR) \$12.50



**JOHN MISTLETOE**  
Bookshop

238 WASHINGTON AVE., ALBANY, N.Y.  
Phones 463-1803 463-4710

**FIGHT  
TB  
AND OTHER  
RESPIRATORY  
DISEASES  
WITH  
CHRISTMAS SEALS**





**You'll Be Warm in . . .**  
Everette's New Cold-Weather  
**ORLON CASUALS . . . \$5 to \$7**  
**LEATHER HANDBAGS \$15 up**  
**MOJUD HOSE . . . . . \$1.25**  
**SUP HOSE . . \$4.95 and \$5.95**  
**VERA SCARVES . . \$2 and \$3**  
**FEATHER MOC SLIPPERS**  
**\$4.00 to \$6.00**

**\$7.00**  
**COSTUME JEWELRY**  
**GIFT CERTIFICATES**

**KNIT GLOVES \$2.95 to \$3.95**  
**FABRIC & KID GLOVES**  
**\$2.95 to \$14.95**



# Anne's Hat Box

Anne McGoe, 406 Kenwood Ave., Delmar  
Daily 10-5:30, Friday nite until 9

## ARMCO BUILDING

BY

## UNIT-SPAN BUILDING SYSTEMS INC.

LATHAM, N.Y.  
Phone ST 5-5000  
CONSULTING ENGINEER  
CLARKSON-CLOU



A NEW HOME — Carl Carlson, veteran Mercedes-Benz distributor, will open a new home for the Keeler-Carlson distributorship to be located on the Troy-Schenectady Road, opposite the Albany Shaker Road intersection. The 7,000-square foot structure will house the sales and service division for this distributor, who handles the Mercedes line from Poughkeepsie to Plattsburgh. Shown inspecting the partially completed structure are: Walter Urda, president of Unit-Span, builders of the structure; Alex Keeler and Mr. Carlson of the distributorship, and Paul Van Amburgh, Unit-Span project coordinator.

# PRE-CHRISTMAS CARPET SALE

<b>BEAUTIFUL ACRILAN CARPETING</b> COMPLETELY INSTALLED over heavy foam rubber. Reg. \$15.25 sq. yd. NOW SALE PRICED AT <b>\$12.50</b> per square yard	<b>BEAUTIFUL WOOL CARPETING</b> COMPLETELY INSTALLED over heavy foam rubber. Reg. \$15.25 sq. yd. NOW SALE PRICED AT <b>\$12.50</b> per square yard
<b>"501" CONTINUOUS FILAMENT NYLON CARPETING</b> Completely installed over heavy foam rubber. Reg. \$12.70 sq. yd. NOW SALE PRICED AT <b>\$8.95</b> per square yard	<b>HERCULON CARPETING</b> COMPLETELY INSTALLED Reg. \$12.70 sq. yard. NOW SALE PRICED AT <b>\$8.95</b> per square yard

Open Daily 9 to 5 -  
Wed. & Mon, 9 to 9

PLANT & SHOWROOM

243 Delaware Avenue, Elsmere (Just above Delaware Plaza)



**FREE Pickup and Delivery**  
**HE 9-9978**

## 3 pc. Set Furniture Cleaned \$35

## 9 x 12 Domestic \$9.75

(Beautifully Cleaned)

# ABBAY

RUG AND cleaners

## FURNITURE

For **QUALITY & SERVICE** - Stop In. Ample Parking in rear.

## At St. Thomas

9th and 10th graders of St. Thomas' parish, Delmar, have scheduled December 4 as a Day of Recollection.

Invited to attend, also are the members of the high school groups associated with all the churches in Delmar.

Discussion of religious topics, important and interesting to this age group will begin at 1:30 p.m., under the direction of Rev. Lawrence G. McTavey, vice-principal at Cardinal McCloskey High School, Albany.

A buffet supper will be served at the close of the program and records for dancing will be available.

The "Day," offered without charge, has been arranged by Nancy O'Hara, Cindy Sutter, Mary Martin and Barbara Scott. Supervision and refreshments will be handled by the adult CYC chairmen, Mrs. G. Thomas DiNapoli, Mrs. Charles O'Hara and Mrs. Donald Lashinger.

## Meeting

"Party Pretty Tables" is the theme for the December 6 meeting of the Garden Group of the Delmar Progress Club at the Del-



mar Library, beginning at 10 A.M. Table settings representing various holidays, will be done by Mrs. Russell F. Shaw, Mrs. Donald E. Hall, Mrs. James B. McNally, Mrs. Warren A. Wilber, Mrs. Sidney D. Vunk and Mrs. S. Scott Jackson. The table arrangements will be discussed as part of the program.

The meeting will carry over to an afternoon session with the members decorating the library for the Christmas season. Coffee will be served during the noon luncheon break. Mrs. Frederick A. Baker is chairman for the program and requests the members to bring necessary tools for the afternoon decorating.

## Tea

The "Take Five" Song Group will entertain at the Annual Christmas Tea, honoring new members of the Delmar Progress Club on December 5 at St. Stephen's Episcopal Church, from 2:00 to 4:00 P.M. Members of the Group are Mrs. James H. Ackerman, Mrs. S. Scott Jackson, Mrs. Duncan S. Martin, Mrs. Richard W. Moomaw and Mrs. J. Wesley Thurlow, Jr. with Mrs. Kimball L. Howe, accompanist. The Group will sing "Camelot," "The Humming Chorus" from Puccini's "Madame Butterfly," "Home Came the Old Man," an American Folk Song and an Old Spanish Carol, "Who will come to Bethlehem."

Two members of the Slingerlands Players, Betty Taylor and Jack Ryan, who have performed as a duo for area groups, will present an specially prepared program of Christmas readings entitled, "Journey To Christmas." Betty Taylor has been active in the Quarto Players, Arena Theatre, Schenectady Civic Theatre and Slingerlands Players. Jack Ryan was leading man with the Albany Civic Theatre in the recent production, "An Italian Straw Hat," and has performed with both Arena Theatre and Slingerlands Players. Mrs. Albert B. Wilber will direct this Christmas program.

The new members, who will be

**FRANK H. Adams**  
JEWELERS - SILVERSMITHS

*For Christmas Engagements*

\$275  
\$400  
\$375  
\$500  
\$400

diamond solitaires to blaze out the exciting news. Since this will be your most important gift, place your confidence and trust in a jeweler who really knows diamonds. The quality of our gems, the counsel of our *Diamond Experts* and our wide and varied selection are your guarantee of making the best choice.

*Illustrations slightly enlarged*

*It's not too early  
to layaway for Christmas*

*Charge Accounts  
Invited*

**58 NO. PEARL ST., COR. STEUBEN, DOWNTOWN ALBANY**

*Free Parking at All Park & Shop Lots*



**WIN UP TO \$2,000 in CASH** IN ONE OF THE NATION'S  
BIGGEST SUPERMARKETS GAMES  
**"STAKE YOUR CLAIM"**  
**THOUSANDS OF INSTANT WINNERS!**

It's fun to win...  
and easy to play

Nothing to buy...get details  
at your nearest Grand Union



TENDER JUICY  
**SIRLOIN STEAK**  
lb **88¢**



WELL TRIMMED  
**RIB STEAK** 7" CUT lb **78¢**  
BONELESS  
**CHUCK STEAK** lb **78¢**  
TOP  
**SIRLOIN STEAK** lb **\$1 18**

BLADE CUT  
**CHUCK STEAK**  
lb **48¢**

CALIFORNIA  
**CHUCK STEAK** lb **68¢**  
TENDER  
**CUBE STEAK** ROUND lb **\$1 08**

TENDER JUICY STEAK  
**PORTERHOUSE**  
lb **88¢**

OVEN READY-7" CUT  
**RIB ROAST**  
lb **68¢**

BONELESS CROSS  
**RIB ROAST**  
lb **88¢**

THICK CUT  
**BRISKET BONELESS** lb **88¢**  
BOTTOM  
**ROUND ROAST** lb **98¢**  
CALIFORNIA  
**CHUCK ROAST** lb **68¢**

BLADE CUT  
**CHUCK ROAST**  
lb **48¢**

MIDDLE CUT  
**CHUCK ROAST** lb **58¢**  
TOP  
**ROUND ROAST** lb **\$1 08**

**FREE 100 BONUS STAMPS**

With This Coupon and the Purchase of One 1 lb. 10 oz. pkg.

**SNOWY BLEACH**

COUPON GOOD  
Thurs., Fri., Sat., Dec. 1, 2, 3

LIMIT ONE COUPON PER CUSTOMER

**FREE 100 EXTRA BONUS STAMPS**

With This Coupon and the Purchase of One Qt. Jar

**KRAFT MAYONNAISE**

COUPON GOOD  
Thurs., Fri., Sat., Dec. 1, 2, 3

LIMIT ONE COUPON PER CUSTOMER

**FREE 100 EXTRA BONUS STAMPS**

With This Coupon and the Purchase of One Gal. can deal label

**WESSON OIL**

COUPON GOOD  
Thurs., Fri., Sat., Dec. 1, 2, 3

LIMIT ONE COUPON PER CUSTOMER

**FREE 100 EXTRA BONUS STAMPS**

With This Coupon and the Purchase of Three pkgs. of 2

**CHICKEN NOODLE LIPTON SOUP**

COUPON GOOD  
Thurs., Fri., Sat., Dec. 1, 2, 3

LIMIT ONE COUPON PER CUSTOMER

**FREE 100 EXTRA BONUS STAMPS**

With This Coupon and the Purchase of Four 1 lb. cans

**GRAND UNION TOMATOES**

COUPON GOOD  
Thurs., Fri., Sat., Dec. 1, 2, 3

LIMIT ONE COUPON PER CUSTOMER

**STARRIST TUNA**

**3 89¢**

6 1/2 OZ. CANS

**ALL PURPOSE CRISCO OIL**

**49¢**

24 OZ. BTL.

**PARKAY MARGARINE KRAFT**

**39¢**

1 LB. PKG.

**SALAD DRESSING WISHBONE**

**3 100¢**

8 OZ. BTL.

**LUSCIOUS CALIFORNIA Emperor Grapes**

**3¢**

lb

**NORTHWESTERN PEARS ANJOU OR BOSC**

**3 lbs 49¢**

**HEINZ KETCHUP**

**3 89¢**

20 OZ. BTL.

**CAMPBELL'S TOMATO JUICE**

**3 100¢**

1 QT. 14 OZ. CANS

**FREE 100 BONUS STAMPS**

With This Coupon and the Purchase of One 2 lb. pkg. U.S.D.A. Choice

**GROUND CHUCK**

COUPON GOOD  
Thurs., Fri., Sat., Dec. 1, 2, 3

LIMIT ONE COUPON PER CUSTOMER

**FREE 100 EXTRA BONUS STAMPS**

With This Coupon and the Purchase of One 1 lb. pkg. Grand Union

**SLICED BOLOGNA**

COUPON GOOD  
Thurs., Fri., Sat., Dec. 1, 2, 3

LIMIT ONE COUPON PER CUSTOMER

**FREE 100 EXTRA BONUS STAMPS**

With This Coupon and the Purchase of One 1 lb. pkg. Diamond Brand

**WALNUT or PECAN MEATS**

COUPON GOOD  
Thurs., Fri., Sat., Dec. 1, 2, 3

LIMIT ONE COUPON PER CUSTOMER

**FREE 100 EXTRA BONUS STAMPS**

With This Coupon and Any \$2.00 or More Purchase on

**HOLIDAY WREATHS**

(PRODUCE DEPT. ONLY)  
COUPON GOOD  
Thurs., Fri., Sat., Dec. 1, 2, 3

LIMIT ONE COUPON PER CUSTOMER

**FREE 50 EXTRA BONUS STAMPS**

With This Coupon and the Purchase of One large 12 oz. or family size 17 oz. bot.

**MOUTHWASH SCOPE**

COUPON GOOD  
Thurs., Fri., Sat., Dec. 1, 2, 3  
(Grand Union Stores Only)

LIMIT ONE COUPON PER CUSTOMER

WE RESERVE THE RIGHT TO LIMIT QUANTITIES

PRICES AND OFFERS EFFECTIVE THURS., FRI., SAT., DEC. 1, 2, 3

WE ARE NOT RESPONSIBLE FOR TYPOGRAPHICAL ERRORS

# A gift of GOLD

## FREE!

When you  
open  
a new  
Christmas  
Club  
Account

2 Gold  
Candles

**Join today.** \$1.00, \$2.00, \$3.00, \$5.00 and \$10.00 Clubs  
are available for your convenience. And there are no opening charges.

## City & County Savings Bank

*Your Community Bank*

Member Federal Deposit Insurance Corporation

**DOWNTOWN:**  
100 State Street,  
Albany, N. Y. 12201

**UPTOWN:**  
301 New Scotland Ave.,  
Cor. Ontario Street,  
Albany, N. Y. 12208

**BETHLEHEM:**  
163 Delaware Ave.,  
Opp. Delaware Plaza,  
Delmar, N. Y. 12054

introduced by their sponsors, include the Mesdames Stephen Richards, Emil Klusman, Philip K. Scott, Harvey W. Travis, Emil Hinkel, and Lucien Le Maitre, reinstated, and Samuel Hazelton, Daniel McMahon, Edward Mason, George B. Allen, Thomas Moreen, James McGraw, John Mather, Wallace McClellan, C. Dale Guiley, and Miss Ethel Pratt. In the receiving line will be Mrs. William J. Sharpe, President; Mrs. George R. Schreck, First Vice-President; Mrs. B. Lionel Truscott, Second Vice President; Mrs. Charles T. Reid, Recording Secretary; Mrs. Charles Kebbon, Corresponding Secretary; Mrs. David I. Schwartz, Treasurer and Mrs. Donald A. Logan, Assistant Treasurer.

## Meeting

The December Christmas meeting of the Women's Auxiliary of the Elsmere Fire Company will have a smorgasbord at 6:30 P.M. on Thursday, December 8.

## At Home

Mrs. Wm. Houghtaling of 5 Derry Lane, Glenmont, has as her guests for the next few weeks, her son Don Feeney, his wife Penny and their two children, Karen and Bruce.

The Feeney's recently completed a two year stay at Tachikawa Airforce Base near Tokyo, Japan.

Prior to returning to his civilian post with the U.S. Government, Don will attend school at Fort Lee, Virginia, for two months. Don's family will join him at Fort Lee shortly after the Christmas holidays.

## Meeting

The Higher Education Study Group of the American Association of University Women will meet at 1 p.m. on Thursday, December 1, at the home of Mrs. Richard C. Taylor, 13 Bedell Avenue, Delmar. Mrs. Joseph H. Einhorn will report on her trip to Yugoslavia and Mrs. Thomas

Lynn Johnson will report on her journey to the South Seas.

## Program

The combined choirs of the Washington Avenue Alliance church, and the Church of the Nazarene, both of Albany, will present a Christmas cantata, "Song in the Night," by Floyd W. Hawkins, at 7 p.m. Sunday, December 11, in the Alliance church, 649 Washington Avenue, Albany.

Participating from the Delmar area will be Thomas B. Thornton, directing; Mr. and Mrs. Carlton Allen, all of Delmar; Mr. and Mrs. Carl Bish, Slingerlands; Mrs. Richard Lindsey, Coeymans; Chester Bolin, Selkirk; and Mr. and Mrs. John Ainsworth of Voorheesville.

## Sale

The Rehabilitation Department of Memorial Hospital, Albany, will hold its sale of items made by patients in Occupational Therapy, on December 7, 8, and 9.

Under the direction of Miss Arlene Mae Coe, Registered Occupational Therapist, Hospital Volunteers will aid with the sale. Mrs. Howard Nicks will be chairman with committee members who are volunteers to the Department: The Mesdames C. Edgar Vail, Alfred T. Leroy, John E. Brandow, George LaZotte and The Misses Elizabeth Anderson and J. Isabelle Johnston.

Among new items to be sold this year are hand painted fabrics and artificial flower arrangements.

The sale will be held in the lobby of the Hospital from 9 A.M. to 4 P.M. daily.

Proceeds will go toward replenishing materials for O.T. patients. The public is invited to attend.

SUBSCRIBE TO

THE SPOTLIGHT

N.Y.S. OFFICIAL  
Inspection Center

**L & H**

Brake & Front End Service  
100 Adams Street, Delmar  
HE 9-3083

Alignment  
Wheel Balance  
Mufflers & Tail Pipes  
Brakes  
Front End  
Springs



NEW WOOLS &  
PARTY FABRICS



RIGHT HERE IN DELMAR!

**THE FABRIC GARDEN**

244 Delaware Ave.

HE 9-4432

Delmar

**FREE OFFER**

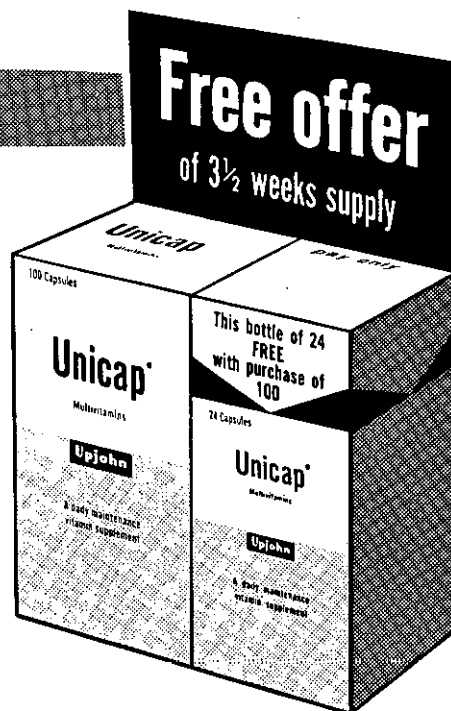
**Unicap® MULTIVITAMINS**

**Upjohn** Medicine...Designed for health...Produced with care.

**24 FREE**

**WHEN YOU BUY 100**

Now is the time to buy and save on Unicap by Upjohn. Unicap makes every meal a balanced meal as far as normal vitamin needs are concerned. You can depend on Unicap. Take advantage of this FREE OFFER!



**L. J. MULLEN PHARMACY**

256 Delaware Avenue, Elsmere, New York

Phone 439-9356 (Never a Busy Signal)

## Sale

The Delmar Evening Unit of the Home Economics Division of the County Extension Service will conduct a Christmas Bazaar, Tuesday, December 6, in the cafeteria of the Bethlehem Central Senior High School at 8 p.m.

Articles for sale will be contributed by members and will

include jellies, preserves, baked goods, as well as hand crocheted, knitted and sewn items.

Mrs. Joseph Parser, known throughout the area for her cookies is in charge of refreshments.

## In Concert

The Civic Music Association of Albany will present mezzo-soprano Helen Vanni in a pro-

gram on Wednesday evening, December 7, at the Albany High School.

Miss Vanni performs with the Metropolitan and San Francisco Opera Companies. She recently appeared with the Boston Symphony and the New York Philharmonic. She is hailed by critics as one of our rising young operatic stars.

## Award

Alice Porter, 1 Furman Place, Delmar, was recently given an award of Merit in the National Newspaper Snapshot Contest in which there were more than 250,000 entries.

She entered four of her pictures in the Schenectady Gazette's eight-week contest and



THE VILLAGE VOLUNTEER FIFE AND DRUM CORPS is expanding to include boys and girls between the ages of 10 and 15. Any child who would like to join this organization, will receive, free: instrument, music and weekly instruction from the finest teachers available. Further information and application blanks may be obtained by calling William Frueh, 439-1710.

### General Insurance

### Time Payments

### Surety Bonds

## Frank G. Coburn, Inc.

283 Washington Ave.

Albany, N.Y.

Phone Albany HO 3-4277 - 8-9

DON'T FORGET

# FREE

WINTER STORAGE

## MAIL ORDERS NOW

**"A BIG BLOOMING MUSICAL HIT!"**  
—McClain, Jr., American

# KENNETH NELSON

*In the Musical Based on H. G. Wells' Kipps*

## HALF A SIXPENCE

**ON STAGE**

SCHENECTADY — ONE PERFORMANCE ONLY —

### Proctor's WED. DEC. 14<sup>TH</sup> AT 8:30

Orch. 5.50 & 4.50 Orch. Loges 3.00; Bal. Loges 4.50; Bal. 2.75-2.25  
SEND SELF-ADDRESSED STAMPED ENVELOPE

# THINK FIRST

## EVERY DAY A BONUS DAY AT FIRST NATIONAL

# 5%

**SAME AS IN FORMER YEARS**

*Free Storage*

Necessary repairs at nominal cost. Mower returned  
in the Spring. Payment on delivery.

**TAYLOR & VADNEY**

**303 CENTRAL AVE. HE 4-9183**

Open Daily — 9 A. M. to 9 P. M.

**AT THE NEW C. L. SUMMER'S**



The  
Right Ideas  
for Men with  
**YOUNG IDEAS**

**For that MAN  
on your Christmas List**

Visit Our New Enlarged  
SWEATER and JACKET Department.

SWEATERS by Coventry, Edgeworth, Forum  
Kandehar and Leonardi-Strassi.

Outerwear by Lakeland, McGregor  
Mighty-Mac and Strato-Jac.

**C. L. Summer  
& CO., INC.**

60 NORTH PEARL STREET

Charge Accounts Available Free Park & Shop Tickets  
Open Evenings till 9 P.M.

PER YEAR  
Compounded Quarterly  
From Day of Deposit

**THE 5% RATE IS NOT AN ANTICIPATED  
DIVIDEND, IT IS A FIXED GUARANTEED  
RETURN ON YOUR TIME DEPOSITS.**

**TIME DEPOSITS AND RATE OF INTEREST ARE BACKED  
AND GUARANTEED NOT ANTICIPATED BY  
FIRST NATIONAL AND DEPOSITS ARE NOW INSURED IN  
THIS BANK UP TO \$15,000 BY THE FEDERAL DEPOSIT IN-  
SURANCE CORPORATION.**

**WHY ANTICIPATE? IT'S YOUR MONEY**



**WITH FIVE FRIENDLY OFFICES TO SERVE YOU**

**GUILDERLAND WESTMERE 489-4408**  
KARNER RD. AT WESTERN AVE.

**COLONIE 869-8455**  
CENTRAL AVE. AT KILLEAN PARK

**SCOTIA 377-6491**  
MOHAWK AVE. AT TEN BROECK

**GLENVILLE 399-8189**  
SARATOGA RD. AT GLENRIDGE

**NISKAYUNA 393-3684**  
BALLTOWN RD. AT NOTT ST.

— MEMBERS —  
FEDERAL DEPOSIT  
INSURANCE CORPORATION

**FOR ANY BANKING INFORMATION STOP IN OR CALL THE OFFICE MOST CONVENIENT**



# Don't put off shopping for Christmas.

## Just put off paying.

Get yourself a First Trust Charge Card. Do all your shopping now, and you won't have to lay out any cash.

You can shop in as many as 350 stores, but you won't get 350 bills. We consolidate your charges into one monthly bill — which you can pay in one sum, or spread over six months.

It only takes a few minutes to open your First Trust Charge. So stop where you see our red and black emblem or at any First Trust office.



MEMBER FEDERAL DEPOSIT INSURANCE CORPORATION

**MAIN OFFICE:**  
State and Broadway  
Open Thurs. eve. 5 to 8 P.M.  
**WASHINGTON AVE. BRANCH:**  
252 Washington Ave.  
Open Wed. eve. 4 to 7 P.M.  
**SOUTH END BRANCH:**  
135 So. Pearl St.  
Open Thurs. eve. 5 to 8 P.M.

**DELAWARE AVE. BRANCH:**  
405 Delaware Ave.  
Open Fri. eve. 4:30 to 7:30 P.M.  
**WEST END BRANCH:**  
581 Central Ave.  
Open Fri. eve. 4:30 to 7:30 P.M.  
**COLONIE BRANCH:**  
1230 Central Ave.  
Open Thurs. and Fri. eve.  
5 to 8 P.M.

**WESTERN AVE. BRANCH:** 1215 Western Ave.  
Wed. 4:00 P.M.-6:00 P.M., Fri. 4:00 P.M.-7:00 P.M.

had four winners. A color print, which she calls "Abstract," received the grand prize in one class in the color division. This picture was entered by the Gazette in the national competition and received the Award of Merit.

## Paper Drive

The Walther League of the Bethlehem Lutheran Church will sponsor a Paper Drive on Saturday, December 3, throughout the Town of Bethlehem. The funds derived from the drive will be added to the Church Building Fund.

You may contribute your papers by simply calling one of the following: Cindy Sullivan: 439-9532; Kimberly Gall: 439-3271; Beverly Wright: 439-4573.

## Christmas Party

The annual Christmas Party of the Delmar Fire Department Ladies' Auxiliary will be held on Thursday, December 8, at 6:30 P.M. at the Fire Hall. After a dinner there will be a short business meeting to be followed by an exchange of gifts.

In charge of decorations will be: Helen Scoons, Dorothy Mann and Mercedes Hickman with the dinner prepared and served by the Firemen under the direction of Bill Contento. Mrs. Donald Cooke will preside at the business meeting.

## Dinner


The Annual Meeting and Dinner of the Bethlehem Tennis Association will be held in the cafeteria of the Junior High School on January 9, 1967 at 6:30 P.M. A film on tennis will be presented.

The committee in charge of arrangements is: Wayne F. Fry, chairman; Dr. James E. Siggins, Frederick R. Walsh, Mrs. John C. Stokoe, Mrs. Douglas R. Hinman, Mrs. Jay R. Handwergen, and Mrs. George A. Witt.

## Hanging of the Greens

The WSCS and the Men's Club of the Slingerlands Methodist Church will jointly sponsor a "Hanging of the Greens" party on Monday, December 5, at 7:30







*Distinctive  
imported and domestic  
fashions for men*

Bronzini Neckwear  
Daks  
Gino Paoli Knitwear  
Baker Clothes

8 James Street • Albany, N. Y.  
HE 6-1142




PERFECT  
For Any 'Him'




THE  
Chippewa Boot

NOW  
AT


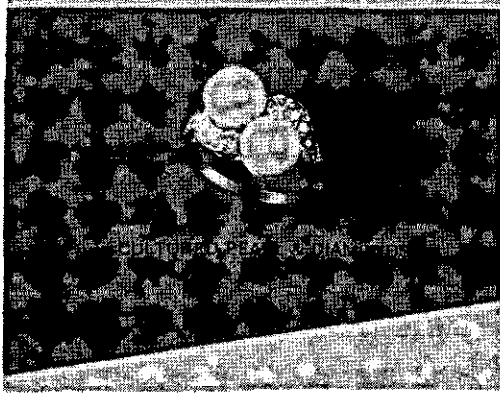


**Bennett's**  
SPORTING GOODS  
DELMAR, N. Y.

*May your Christmas dreams  
come true all year long.*



GENUINE BLACK STAR & DIAMONDS



**Fuhrman's inc.**  
JEWELERS & SILVERSMITHS

52 State Street

<p>KING OF THE ROASTS <b>RIB ROAST</b> lb. <b>65¢</b></p>	<p><b>RIB ROAST</b> 1st 3 ribs lb. <b>77¢</b></p>
<p>LEAN, MEATY WESTERN <b>Spare Ribs</b> lb. <b>49¢</b></p>	<p>EXTRA LEAN <b>GROUND CHUCK</b> 3 lbs. or more lb. <b>69¢</b></p>
<p>HOME MADE <b>Sauerkraut</b> Right from Barrel lb. <b>2 39¢</b></p>	<p>POLISH STYLE, CANNED <b>HAMS</b> Mayka Bialy Orzel Brand lb. can <b>9 7.98</b></p>

MEAT DEPT. PHONE: 439-9419

Custom Cut and Wrapped

**FREEZER BUYS**  
U.S.D.A. CHOICE  
**ARM CHUCK OF BEEF** lb. **49¢**  
**HINDQUARTER** lb. **69¢** **FOREQUARTERS** lb. **49¢**  
**SIDES OF BEEF** lb. **57¢**

Special Freezer Paper Used

HERSHEY, CHOCOLATE  
**SYRUP** lg. can **15¢**

FIRESIDE,  
**FIG BARS** 1 1/4 lb. pkg. **25¢**

MARCAL, PAPER  
**TOWELS** 2 roll pkg. **29¢**

CHEF-BOY-AR-DEE  
**TWIN PIZZA MIX** **59¢**

RIVER-VALLEY, FROZEN  
**POTATOES** 2 lb. bag **29¢**

**PRODUCE SPECIALS**

GOLDEN YELLOW <b>BANANAS</b> 2 lbs. <b>29¢</b>	YELLOW, COOKING <b>ONIONS</b> 3 lbs. <b>29¢</b>
---	--



**DAVIS' STONEWELL SHOPPING CENTER**

JUNCTION HIGHWAYS 85 & 85A  
NEW SCOTLAND, NEW YORK  
HE 9-5398

Open Daily and Sundays  
10 A.M. to 10 P.M.

Reserve right to limit quantities  
Prices effective: Thurs., Fri., Sat.

12/1, 12/2, 12/3

p.m. The program includes a play, carol singing and refreshments.

## Christmas Decorations

This year you can make Christmas come alive in a very special way by assembling new easy-to-make holiday pick decorations that the whole family will enjoy creating.

Gather the children around the kitchen table, play carols on the stereo, and see that each person has something specific to do.

### IGLOO CANDELABRA

The materials you'll need to make a unique candleholder centerpiece include:

1 piece Styrofoam 4" thick, 12" square (available at local five and dime and novelty stores)  
15 plastic containers Diamond "color-fast" round picks (each container have 150 picks in a mixture of four hues.  
1 small bottle red food coloring  
5 white candles 7 1/2" long  
1 can spray snow  
5 Styrofoam balls 2" in diameter  
2 Styrofoam balls 1 1/2" in diameter  
table knife, pencil, scissors, sturdy tablespoon, water-color brush, bits of ribbon and red, green and black construction paper  
small piece of cardboard  
glue

Start by cutting the square piece of 4" thick Styrofoam diagonally with the table knife, di-

viding it into two triangular pieces. You'll work with one of these pieces; save the other for cutting out the foam for the Frosty Candy Cane.

While you're doing this, let the children separate the "color-fast" picks into four piles: red, green, blue and yellow.

Next, using the sturdy tablespoon, carve in the base of the triangular piece of Styrofoam,

an alcove 5 1/2" wide by 4 1/2" high by 2 1/2" deep. Brush the inside of the alcove with red food coloring.

Now cut 3 of the 2" Styrofoam balls in half with the table knife. Using a round pick to anchor each in place, put 2 of the ball-halves

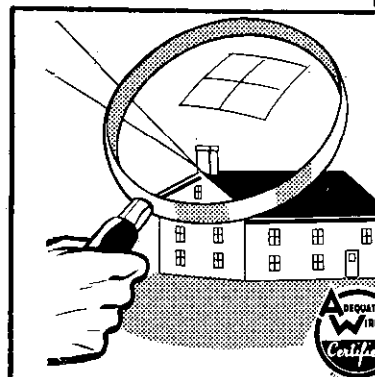
**TOO LATE  
TO CLASSIFY**

FURNITURE: 7-piece blonde maple dining room suite. HE 9-3045 after 5 p.m. or all day Saturday.

**TURNER  
VACUUM  
SERVICE**



261 DELAWARE AVE., DELMAR  
TELEPHONE: HE 9-6424  
PARTS - SALES - SERVICE



**FREE!**

You can get a free housepower inspection from an **AWB MEMBER CONTRACTOR.**

Consult the "yellow pages."

EASTERN NEW YORK  
**ADEQUATE WIRING BUREAU**  
Phone HE 6-0706

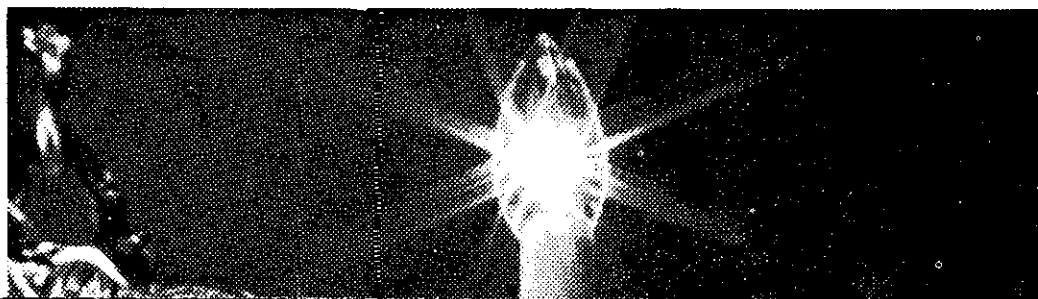
**WE WANT YOU!**  
*Rebellion '67*  
**ALBANY DODGE**

**Lou's**   
**Service Station**  
232 DELAWARE AVENUE  
(Corner Lincoln Ave.)  
**RE-OPENED**

(Under NEW Ownership of Lou Moldenhouer)

• CAR WASHING      • LUBRICATION  
Wet - 1.25    Chamois - 2.00      1.50

Who's the light  
of the party?  
The  
Invisible Man.





**Bates  
Floaters®**  
*Leisure Footwear*

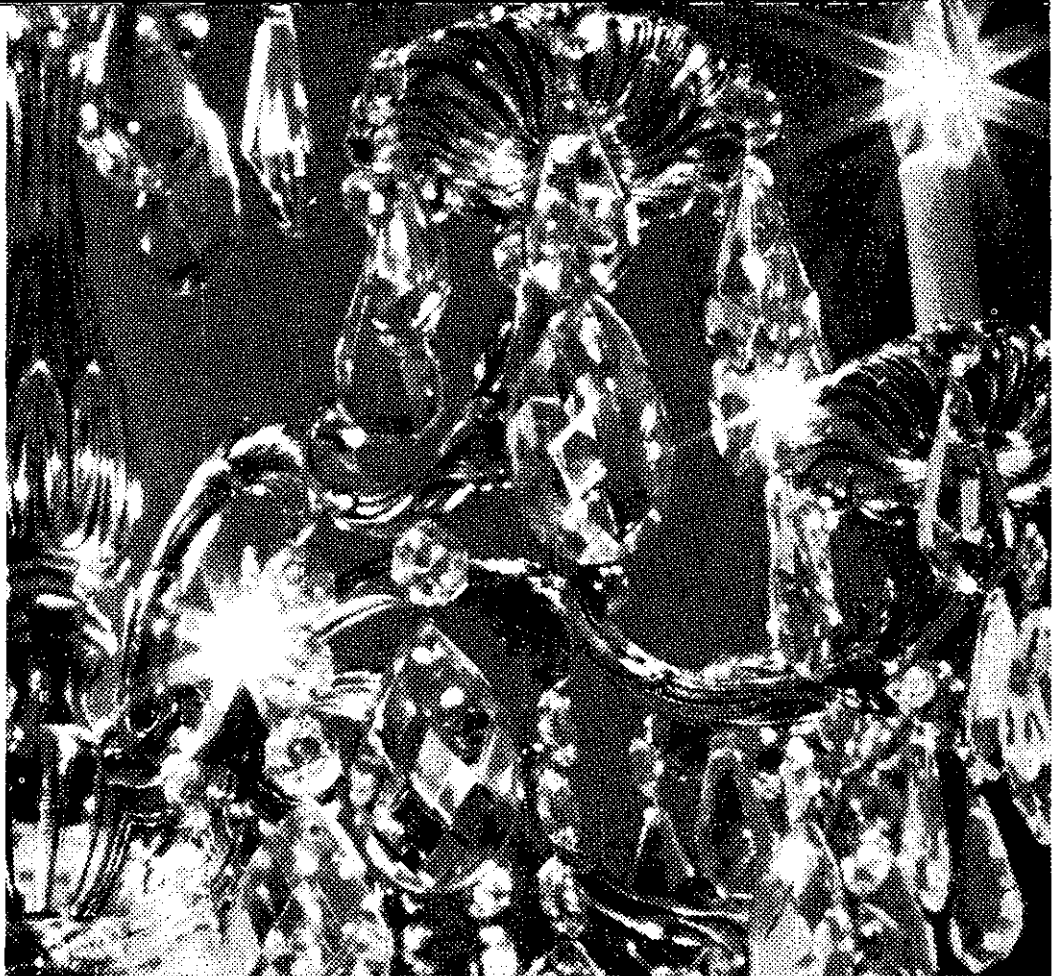


"The Bates Floater® Shearling lined boot was selected for wear at the XVIII Olympiad! Wear it in all kinds of winter weather, and treat yourself to fireside warmth. Drop by and try a pair of these lightweight wintertime champions. They are siliconed treated for water repellency."

**\$18.00**

Sizes 7 to 13 - "Ws" only

**Jules Shoes**  
WESTGATE SHOPPING CENTER



And he's the least noticed guest of all. You get so used to The Invisible Man—electricity—that you forget about him. But he's there, all the time, lighting every room of your home. He gives you the romance of a chandelier, the safety of a

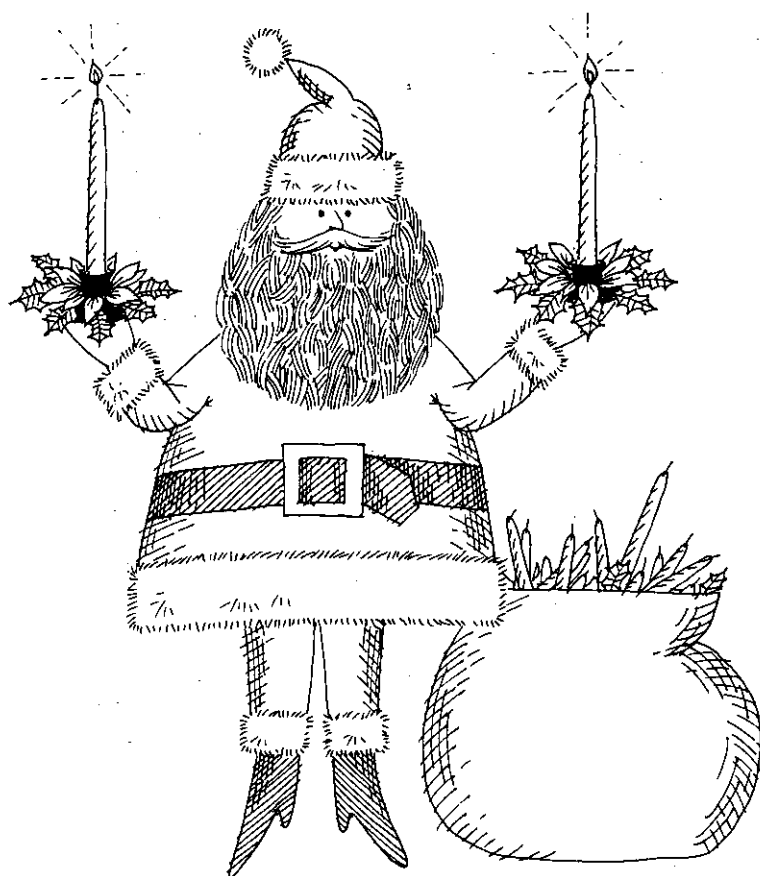
night light, the convenience of an everyday light bulb. The cost? Peanuts. The Invisible Man—electricity—lights every light and operates all the appliances in your home for only pennies a day. So have a party. And invite The Invisible Man.

## NIAGARA MOHAWK

Working hard to make electricity work harder for you

# A GIFT for new Christmas Club members

Add a cheery accent to your home with a pair of gay, red candles in poinsettia holders. They're yours just for joining National Commercial's new Christmas Club. Thousands of thrifty people each year use this pleasant, easy way to prepay holiday expenses. Join now . . . you'll be glad you did.



DELMAR

BECKERS CORNERS  
Mondays, Wednesdays  
9 to 11 a.m.

BERNE

Tuesdays, Fridays  
3 to 5 p.m.

ELSMERE

WESTERLO

Mondays, Wednesdays  
Noon to 2 p.m.

## YOUR CHOICE OF CHRISTMAS CLUB PLANS

50 weekly deposits of:	bring next November:
\$1.....	\$50
2.....	100
3.....	150
5.....	250
10.....	500



NATIONAL  
COMMERCIAL BANK  
AND TRUST COMPANY

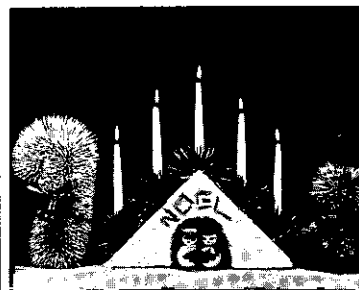
MEMBER FEDERAL DEPOSIT INSURANCE CORPORATION

FULL SERVICE BANKING through more than 50 offices in Northeastern New York

on each 12" side of the candleholder base, and 1 of the halves on the very top (cut a groove in the top, 2" wide and 1/2" deep, for the ball-half to rest in).

Let the youngsters cover each of the 5 positioned ball-halves with blue and green picks (since they're "color-fast", you don't have to worry about stained fingers and clothes.) Make sure they leave room at the top of each ball-half for a candle to be placed later.

Make the letters N-O-E-L on the front of the candleholder by gluing on 3 halves of round



picks for each section of each letter. Cover the front of the candelabra with a light coat of spray snow.

The two igloo carolers are a cinch to make. One 1 1/2" Styrofoam ball (head) and one 2" ball (body) — fasten together with a round pick — make each. Fashion face features and mittens from bits of felt and glue in place. Tie a pretty yellow bow around the neck of the girl; a red ribbon makes an excellent scarf for the boy. Hymm book is a 1" x 2" piece of folded foil held to the bodies by the felt mittens.

Glue both carolers together, side by side. Cut a 2" wide by 3 1/2" long oval from the small piece of cardboard, and glue the carollers onto it so they will stand up by themselves.

Wrap the base of each candle with transparent tape (to help prevent splitting) and carefully push a round pick into the bottom of each candle, about halfway. Then place the candles in position over each of the pick-covered



*It's Just the  
Right Time!-to*

**SHOP EARLY**

ball-halves, and press down so that the exposed length of pick is forced into the Styrofoam ball-half. Touch up with blue and green picks where needed. Place the carolers in the alcove - and you're ready to start the...

SAUCY SNOWMAN

In addition to the red and yellow Diamond "color-fast" picks that you have left over from making the Igloo Candela-bra, you'll need the following items for your Saucy Snowman:  
2 Styrofoam balls 2" in diameter  
1 glass ball tree ornament 3/4" wide  
4 glass ball tree ornaments 1/2" wide  
1 chain of tiny glass beads 3" long  
black construction paper

Completely cover one of the 2" Styrofoam balls with red toothpicks; this will be the body of the snowman. Cover the other 2" Styrofoam ball with yellow toothpicks to make the snowman's head. Press the head and body together.

The 3/4" glass ball tree ornament makes the snowman's nose, and the 1/2" glass balls sparkle as his eyes and buttons; just place each ball in position with the opening pointing toward the Styrofoam over a pick point. Push lightly to wedge in place.

Cut a circle 2-1/2" in diameter from the black construction paper; then cut another circle 1-1/4" in diameter, and a rectangle 2" by 4-1/2". Glue both 2" ends of the rectangle together, overlapping about 1/2" Glue the resulting cylinder to the 2-1/2" circle, and then glue the 1-1/4" circle on top - and you have Saucy Snowman's hat!

Tie a bright bow around his neck, and get ready for the "oohs" and "aahs" when you display this delightful Christmas decoration.

FROSTED CANDY CANE

A novel doorfront or wall decoration is made from just a single piece of Styrofoam 4" wide by 10-1/2" long by 2" deep, and 15 boxes of Diamond plain round picks.

Using a table knife, carve the piece of Styrofoam into the shape of a candy cane, then cover the front and sides with the plain



# Flora Mir

*The most luxurious chocolates in the world*



This marvelous collection of gifts and centerpieces called "Designs In Candy," was created for Flora Mir by world-famous designer, Mr. Gene Moore. Each Design is composed of a myriad of fruit-flavored gum gems. Works of art - in candy - the Designs have been contrived so that each tiny gum gem can be easily withdrawn and eaten. Superb for party table settings and gifts.

Accepting orders now - exclusively at

RHEINGOLD'S PHARMACY

Ira H. Rheingold, Prop.

PHONE 434-9109

Glenmont, New York



# Little Folks

We are mighty glad to be in Delaware Plaza and part of the growing Tri-Village community. For your convenience, we are open EVERY NITE including Saturdays till Xmas.

**capitaland's largest selection for pre-teens**

Swinging lace cages for pre-teens and teens. Here, sketched from stock, is white over white lace with the new high yoke and sheer long sleeves, all over applique. Sizes 6 to 14. **\$18.**

You may use your 1st Trust Charge or our convenient layaway plan.



RCA Whirlpool - Magic Chef  
Admiral & Hotpoint Appliances  
MOTOROLA TV  
**DELMAR APPLIANCES**  
239 Delaware Avenue, Elmsere  
Telephone 439-4558

All Sunday  
**NEW YORK PAPERS**  
Delivered to Your Home  
PHONE 439-4711

EVEREST & JENNINGS  
**WHEELCHAIRS**  
FOLDS TO 10"  
RENTALS & SALES  
Albany Surgical Co.  
HE 4-5716

round picks. Coat lightly with spray snow, and tie a little bell ornament and bow around the center. Affix to your wall or front door with a picture hanger.

Whether you decide to make one, two or all three of these Christmas pick decorations, you and your family will truly be creating your own Yuletide pleasure. Working joyfully together at this time of affection and good will — what could be more appropriate to Christmas?

### Newest Family Fun Tool at Local Merchants



Are you itching for an easy way to make every conceivable woodworking joint as well as a wide range of plain and fancy cuts? Here's a compact 1/4 h.p. router weighing just over 3 lbs. which now puts within inexperienced woodworking hands the fun of shaping a molded edge, or beading, fluting, inlaying and decorating. It opens up a new do-it-yourself area of producing professionally-made joints, edges and decorative cuts on period furniture—chairs, tables and cabinets. Because of its high speed, (22,000 rpm) this small but mighty tool leaves a smooth polished surface requiring little or no sanding.

A smaller version of the professional router, standard of the woodworking industry for many years, the "Rout-About" is made by the same company famous for its hand tools and hardware. Held with widely spaced handles flush to the work surface, it cuts the best joints in town—tongue and groove, mortise tenon, rabbet and dado. With the proper accessories and bits, you and the family can also tackle aluminum, plastics and laminates, like veneer trimming on furniture or on that vanity you've wanted in the

# 4-PLY NYLON CORD SNOW TIRES!

Buy the Snow Tire  
with Deepest  
Biting Edge  
of all Major  
Brands!

B.F. GOODRICH  
TRAILMAKER SILVERTOWNS

**2 for as low as**

**NO MONEY DOWN \$35.00** 600x13  
NO TRADE-IN NEEDED  
blackwall  
tubeless plus Federal  
Excise Tax, 2.32

#### STEEL SAFETY STUDS GRIP ON ICE!

- **FASTER STARTS**—up to 71% more starting traction
- **SAFER STOPS**—stop 30% better than regular snow tires
- **BEST POSSIBLE CONTROL**—drive with a new confidence

available in BFG Trailmaker Silvertown and Trailmaker Silvertown Retreads

**7.00** extra  
per tire

#### TRAILMAKER 330 SIZE

700/650x13
775x14
825x14
775x15
845x15

#### FEDERAL EXCISE TAX

1.83
2.20
2.36
2.21
2.55

#### BLACKWALL TUBELESS PRICE

18.70
21.25
24.00
21.25
26.00

**B.F. Goodrich**  
The Straight-Talk  
Tire People

**Wheel Balancing—Complete  
Front Alignment—Brake Service**

# WEINBERG TIRE CORP.

NEXT TO WESTGATE SHOPPING CENTER

**935 CENTRAL AVE.**

**Tel. IV 2-4449**

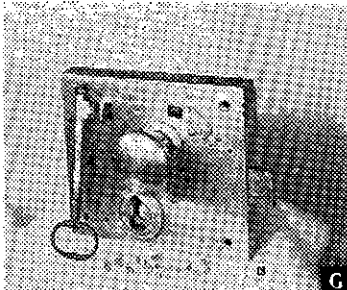
Open Monday thru Friday — 8 A.M. to 5:30 P.M. — Open Saturday 8 A.M. to 5 P.M.



powder room.

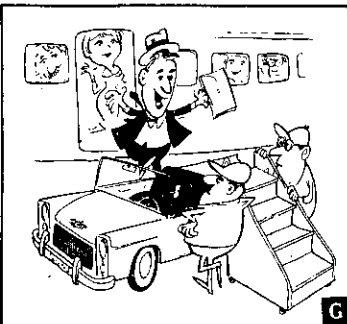
The Stanley Job/Master "Rout-About" is designed to make precision work easy and safe even for the inexperienced woodworker. A Spir-A-Matic depth adjustment sets the cutting tool to the exact depth of cut required, provides over one inch of vertical adjustment with settings of 1/32" or finer. It delivers professional performance at a moderate handyman's price of \$34.95, including a router guide for straight and circular cuts and a straight bit.

## ANTIQUE LOCK



This lock is just one of many types from ancient times to the present on display in the world-famous Yale Lock Collection, which tours U.S. museums.

## CUT TRAVEL COSTS



A new combination called "fly-drive" gives many travelers more days at their vacation area plus the convenience of a private car while they're there, according to Hertz.

We have  
**SCHRAFFT'S**  
ICE CREAM and SHERBETS  
EASTMAN'S CHEESE  
SWEET CIDER

**Sander's**

Slingerlands  
HE 9-9851

**BROWN'S**  
PIANO  
& ORGAN MART

Open Evenings Till Christmas  
1047 Central Avenue, Albany  
Telephone 459-5230  
150 Pianos & Organs  
Lowest Prices  
- Expert Tuning -

**FOWLER'S**  
Liquor Store

See ERNIE or GEORGE  
for BETTER SPIRITS



Elsmere - at - the - Light  
Parking right in front of store.  
HE 9-2613 "We deliver."

Chilled, ready-to-serve  
WINES & CHAMPAGNES



FOR THE ULTIMATE IN  
CHRISTMAS GIVING!

Give her a Wood-Mode Kitchen,  
the loveliest in America

CUSTOM DESIGNED - CUSTOM BUILT - IN A WIDE RANGE OF PRICES



Monday  
thru  
Friday  
10 A.M.-9 P.M.  
Sat. 'til 1 P.M.

**KITCHEN DESIGNERS**  
OF ALBANY, INC.  
1670 CENTRAL AVE., ALBANY, N. Y.

COME IN -  
BROWSE  
THROUGH OUR  
7 DISPLAYS

HE 9-4949

SPOTLIGHT CLASSIFIEDS

HE 9-4949

**CLASSIFIED AD POLICY**  
Classified Ads in the Spotlight must be paid for when the ad is submitted. We must enforce this policy strictly. Our rates are too small to permit invoicing and bookkeeping on these accounts. Please do not ask us to make any exception to this rule.

Your copy and remittance must reach us on Friday before 4:30 P.M. in order to appear in the following Thursday issue.

**CLASSIFIED ADVERTISING RATES**

10¢ per word for each insertion; \$1 minimum.

CALL HE 9-4949

Write, or stop in at our convenient office:  
154 Delaware Avenue

**ALTERATIONS & SEWING**

**ALTERATIONS** and sewing. M. Buess. HE 9-1270. tf

**ALTERATIONS** and sewing. Kirk Hauser. HE 8-0014. tf

**ALTERATIONS**, dressmaking. Diane. HE 9-5740. tf

**ALTERATIONS** and dressmaking. Call Irene. Four Corners, Delmar. HE 9-9257. tf

**ALTERATIONS**, sewing, drapes, slipcovers. 434-4753. Call after 6 except Thursday. tf

**AUTO UPHOLSTERING**

**AUTO** upholstery; Antique cars a specialty. Bob's Auto Top Shop, rear 300 Delaware Avenue, Delmar. tf



**APPLES**

**BEST PLACE TO BUY**

Northern Spy - MacIntosh

Fresh Brown Eggs

FRESH DRESSED FOWLS

**Haswell**

**Farms**

Route 32 at Murray Avenue  
439-3893 Delmar

**BLACKTOP**

**LUZZI BROS.**, Blacktop Paving: Parking lots, driveways, garage floors, sidewalks. Free estimates. 482-3484. tf

**CAPITAL PAVING SERVICE** - Blacktop, landscaping - topsoil. Free estimates, all work guaranteed. 434-4920. tf

**BUILDING & CONTRACTING**

**HOMES**, garages, remodeling, additions, "easy terms." Hogan Construction Co. IV 2-4893. tf

**CARPENTRY**

**ADDITIONS**, remodeling, roofing, stairs, general repairs. Arthur Molle. HE 8-7165. tf

**CARPETING**

**NEED CARPET?** See a Hometown representative at LATHAM Rug Co., Carl Van Hoesen. Store ST 5-8521 Home HE 9-1485. tf

**CLEANING SERVICE**

**LOCHMOOR** Window Cleaning Co. Resident and office maintenance, complete. IV 9-0121 or 489-2474. tf

**HOUSE CLEANING**, window washing, floor maintenance, also any other cleaning you need. Old Holland Cleaning Service, Inc. RO 7-2739. tf

**DRIVER TRAINING**

**Albany Driving Academy**

67A Edgewood Ave., Albany

Beginners - Intermediates

Brush-Up

**CARS AVAILABLE FOR ROAD TESTS**

Standard & Automatic

Call HO 2-1309

**SUBSCRIBE TO THE SPOTLIGHT**

"Try the Popular"

**La Casa RESTAURANT**

Selkirk, New York  
(Formerly Altieris)

- Specializing In -  
**ITALIAN-AMERICAN FOODS**

**Famous for Delicious SEA FOODS!**

Banquets - Private Parties  
Weddings - Showers

Open daily from 11:30 A.M.-10

(Closed Mondays)

All Legal Beverages

Take Out Orders

CALL RO 7-9045

**DRAPERIES**

**DRAPERIES** and bedspreads, custom made and alterations. Free estimates. Call Barbara Schoonmaker. 872-0897. 4t1124

**DOLL REPAIRING**

**DOLLS** repaired, restring, costuming. Reina Deitz. HE 6-1690. tf

**FUNERAL DIRECTORS**

**M. W. TEBBUTT'S SONS**  
Albany Delmar

420 Kenwood Ave.

489-4451

Serving All Faiths  
For Over 100 Years

**INSTRUCTIONS**

**CLASSIQUE DANCE SCHOOL**  
154A Delaware Avenue

CHILDREN AND ADULTS

PRIVATE OR GROUPS

All Types of Dancing and

Body Conditioning

HE 9-3331 Bagha Follett

We are known . . .  
By our good  
Listings

**ROBERTS**

489-3211

**TAKE THE WHEEL**

Go Where  
You Can  
Get Your  
Deal

Go  
Crailo-  
Ford

E. Greenbush



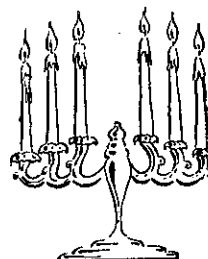
**Gigliotti**

A. ANDREW GIGLIOTTI - PROP

for Quality Pianos

Mason & Hamlin -  
Knabe - Fischer -  
Weber - Starck

ALSO  
RECONDITIONED - PRE-USED - REBUILT



4 DUDLEY HEIGHTS,  
Across From Philip Livingston Jr. High School

**HO 3-5223**

• OPEN EVENINGS BY APPOINTMENT



## CAT HAVEN

FOR CATS ONLY

Individual Care in Private Home

Ethel Fay • ROckwell 5-2715

**WE'RE PROUD OF  
OUR BUSINESS**

## PATROON FUELS

INCORPORATED

91 Lexington Avenue

HO 5-3581

**WE'RE PROUD OF  
OUR PRODUCT**

**ATLANTIC  
HEATING OILS**

Premium Quality Atlantic Heating Oil is triple-refined ... to ignite instantly, burn clean and steady ... to give you the most for your heating oil dollar. Call NOW. We provide prompt, automatic delivery service.

## HELP WANTED

Woman interested in a selling career, in residential Real Estate. No experience necessary. We are starting "Training Classes" soon. For personal, confidential interview, call Edward Kindlon, at O'CONNOR SULLIVAN, INC. HO 5-2271, evenings HO 5-1929.

## LAWNMOWERS

**SHARPENED** and repaired. Your Jacobsen Sales and Service dealer. M. Gudz, 138 Elm Avenue, Delmar. HE 9-2025. tf

## LIQUORS & WINES

**SLINGERLANDS PACKAGE STORE.** Complete line. Deliveries. Discount on case lots. Party consultants. Open 10 A. M. to 10 P. M. Phone HE 9-4581. tf

**O'ROURKE'S** Liquor Store, Corner Elm Avenue & Jericho Road. Selkirk. tf

## MASON WORK

**EXPERIENCED**, all types masonry, new or repairs. Guidara. HE 9-1763 evenings. tf

## MOVERS

**D. L. MOVERS.** Local and long distance moving. Reasonable rates. No job too small or too large. Dick Leonardo. HE 9-5210. tf

**HOUSEHOLD MOVING**, low rates, new equipment, experienced personnel, free maid service. Local moving. 465-1200. tf

**REFRIGERATORS** and appliances moved by local resident, reasonable rates. 439-1140 or 439-9805. tf

## MIMEOGRAPHING SERVICE

**REASONABLE RATES** - Mimeographing - stencils cut - addressing - mailing, Delmar, N.Y. 439-3383. tf

## ORIENTAL RUGS

**NEW AND USED**, in all sizes and colors at reasonable prices. Washing and repairing by native expert. Pickup and delivery. Free estimates. Rod Kermani. Stop 3, Albany-Schenectady Road. EX 3-6884 or IV 2-0457. tf

SUBSCRIBE TO THE SPOTLIGHT

**Colonial  
Arres**



RT. 32, GLENMONT, N.Y.

A planned community of early American homes.

PHONE HE 9-9231

## PAINTING & PAPERHANGING

**INTERIOR**, exterior painting. Free estimates. Guaranteed. Insured. Jim Vogel. HE 9-9718. tf

**INTERIOR** and exterior painting. Also carpentry work. Frank Salisbury. Days: HE 9-5527; nights: HE 9-1355. tf

**DON VOGEL**, exterior - interior painting, paperhanging, fully insured. HE 4-2853, HE 4-8370. tf

**INTERIOR**-exterior painting, paperhanging. Bill McCoy. HO 2-0770 after 5. tf

## PERMANENT WAVING

**SPECIALIZING** in Breck, Realistic, Rayette and Caryl Richards permanents; hair tinting and bleaching. MELE'S BEAUTY SALON, Plaza Shopping Center. HE 9-4411. tf

## PIANOS

**PIANOS** - organs. Area's largest selection. BROWN'S PIANO - ORGAN MART. 459-5230. tf

## SCISSORS SHARPENED

**SCISSORS SHARPENED**, 6 pairs med. size, \$2.00 also pink shears, saws, hair clippers, lawnmowers, knives. Called for and delivered HE 9-3893. tf

## SEPTIC TANK SERVICE

**NORMANSKILL** Septic Tank Cleaners. We install dry wells, septic tanks, drain fields. 767-9287. tf

**DELMAR SANITARY CLEANERS** Serving Tri-Village area over 20 years. HE 9-1412. tf

## SNOWBLOWERS

**SNOWBLOWERS** and Lawnmowers, Sales & Service. Hilchie's Hardware, Delaware Avenue, Delmar. HE 9-9944. tf

## TREE SERVICE

**HERM'S TREE SERVICE:** trimming and removal (insured). Call Albany, IV 2-5231. tf

## TILE - CERAMIC

**NEW** and repair work. Call evenings. HO 3-0538. 4t128

## UPHOLSTERING & SLIPCOVERS

**DROZDOL** upholstery service, 15 years experience. 16 Judson Street. HO 5-6795. 10t1222

**CAPITOL** upholstery • Large selection of upholstery and slip covers reasonable. HO 3-2359. tf

## WATCH REPAIRING

**WATCH** repairing, expert workmanship. All work guaranteed. Also engraving, diamond setting, watch bands. Harry L. Brown, Jeweler, 4 corner, Delmar. 439-2718. tf

## WELDING

**FABRICATION** and general repairs to machinery and equipment. Michael Steel Fabricators and Welding Co., Glenmont, N.Y. HO 3-2775. tf



Spotlight Classifieds  
Tell The World!!!

## FOR REAL ESTATE CALL . . .

Sonja Braun  
HE 9-6400

Lucy Rice  
HE 9-9043

Nancy Kuivila  
HE 9-9159

## YOUR TRI-VILLAGE CONSULTANTS.

## PICOTTE REALTY



CALL . . .

**438-8461**

A CALL WILL SHOW YOU  
WHY IT PAYS TO  
LEASE FROM . . .

**ALBANY DODGE**  
LEASING CORP.  
949 CENTRAL AVE.  
ALBANY, N.Y.

## Premiere Showing

3 Decorator Furnished  
**MODEL HOMES**  
Priced from \$18,790  
**Open House**

1 P.M.  
TIL DARK



**SALEM  
HILLS**

Voorheesville

HOW TO GET TO

SALEM HILLS  
From Albany take  
Western Ave. (Rt. 20) turn left  
on State Farm Road (Rt. 155) to  
Maple Avenue, Voorheesville. Turn  
right and watch for our signs.

OR

From Albany take New Scotland  
Avenue (Rt. 85) to Maple Avenue  
(Rt. 85A). Turn right and proceed  
on Maple Avenue to Salem Hills,  
Voorheesville.

A Glenmont Development  
Corporation Community

Exclusive Sales Agent

**Reiner Realty**

HO 5-4565

Albany, N. Y.

## MERCHANDISE FOR SALE

**ANTIQUES** bought and sold at the  
sign of the Coffee Mill. 67 Adams  
Pl., Delmar. HE 9-1021. tf

**FUEL OIL:** 2¢ per gal. cash dis-  
count. Academy Oil Service,  
Glenmont. 24-hour service. HQ  
2-1309, 465-5336. tf

**PIANOS** — MASON & HAMLIN,  
Knabe, Fischer, Weber and Stark.  
also fine selections of slightly  
used pianos. Call A. Andrew Gig-  
liotti. HO 3-5223. tf

**ALUMINUM** combination window  
special for December. My finest  
quality for only \$15.50 installed,  
any quantity. Regularly sells for  
\$20.95. Taylor Aluminum Pro-  
ducts. 765-2856. tf

**KNAPP Shoes** — ask for new  
"C500". Walt Perry. HE 9-1221,  
HE 4-7051. 3t121

**MARIANI'S XMAS TREE CEN-  
TER**, 159 Fuller Road, Albany,  
Canadian Double balsam, Scotch  
Pine, spruce trees, wreaths,  
boughs, roping. Discounts to  
organizations. Wholesale —  
Retail — Free Delivery. IV 9-  
7013. 5t1222

**NOBLET** B-flat wood Clarinet,  
reasonable. HE 9-1417.

**SNOWTIRES**, 2 Firestone, 7-80x15,  
nylon, like new, used few weeks  
last season. 439-2890. 2t128

**SCOTCH PINE** — cut your own —  
\$2. Idly Acres Tree Farm, Street  
Road, Knox. 872-1535. 3t1215

**FOR HIRE** — 1966 car with driver,  
go anywhere or will drive your  
car. Westerlo. PY 7-5165. 3t1215

**DAVENPORT**, rose-taupe, 81",  
\$25; blue wing-back chair, \$7, ex-  
cellent condition, slip covers  
included. HO 5-1713.

**FOR** better cleaning to Keep colors  
gleaming, use Blue Lustre car-

pet cleaner. Rent electric sham-  
pooer \$1. Hilchie's Hardware,  
Inc., 255A Delaware Ave., Del-  
mar.

**BUNK BEDS**, wooden, conver-  
tible, \$25. Cat or small animal  
carrier, used once, \$5. HE 9-  
4282.

**ANTIQUE** jewelry for Xmas giving,  
furniture, glass, China. Killough's  
Antiques. HO 5-4204.

**TWO** all wool coats, one tan, mink  
collar, one sport coat, both size  
18. 788-2671.

**TRAIN** — Lionel, many accessori-  
es, like new, standard gauge,  
\$25. 439-9455.

**BLACK** Naugahide sofa bed, and  
white arm chair on iron frame,  
\$35; black and grey formica writ-  
ing table will convert to coffee  
table, \$15; automatic electric  
stove, good condition, \$20. After  
7 P.M. weekdays. HE 9-3474.

**PIANO**, upright, Winter, excellent  
condition, \$125, includes bench.  
Metronome; RCA TV 3-way  
record console, needs work;  
radio good, \$25; twin beds with  
springs, \$35. HE 9-5427.

**STEEL** storage shelving unit, 8  
shelves; steel bed frame on cas-  
ters \$5. HE 9-1434.

**PRACTICALLY** new contour vi-  
brating chair, black, excellent  
condition, originally \$250, sacri-  
fice at \$125. GR 4-5028 days or  
IV 9-7135 evenings.

**FRUITCAKE**, home made, on or-  
der, \$1.50 lb. Mrs. Martin. 439-  
5485. 2t128

**SNOWTIRES**, Goodyear Subur-  
banite, 7.35 x 14, excellent, used  
one season, \$18. Evenings. HE 9-  
4380.

**SKIS**, 6 with bindings, \$25; ski boots,  
size 7, \$9; size 9, \$7; ski poles,  
\$8; English riding boots, lady's  
size 6, \$12; men's size 8, \$15; pair  
rubber pacs, size 7, \$4; About  
100 ft. 1" rope for towing, \$20; 10  
ft. overhead garage door, com-  
plete with removable screens,

three years old, \$65; junior pool  
table \$10. All excellent condition.  
439-2278.

**XMAS** trees, choice, standing,  
sheared Scotch Pine. France's  
Farms, Lawson Lake Road, fol-  
low route 32 8 miles south from  
Feura Bush. PO 8-2373, 4t1222

**COAT**, man's leather, brown, size  
38, cost \$38, sacrifice \$20. HE 9-  
4585.

**COAT**, fine quality black Persian,  
silver mink collar, 7/8 length,  
worn 8 times, size 12-14. Cost  
\$600, sell \$300. HE 9-1767.

**FIVE-PIECE** Daystrom dinette set,  
table 30x52", four chairs, good  
condition. RO 7-3490.

**HO TRAIN** set, complete, 14 cars,  
engine plus transformer, switches,  
track, 6 bridges and piers, scenery  
and buildings, cost \$145 new; sacri-  
fice, \$75. 767-3030.

**HANDSOME** 54" Cherry Coffee table,  
two drawer, like new, \$35; small  
mahogany tables; small mirrored  
vanity. HE 9-4580. 2t128

**XMAS TREES**, boughs, wreaths, also  
grave-cover blankets, \$1 and up.  
PO 8-2165. 4t1222

**GIRL'S** 20" bicycle, \$15, space heat-  
er, \$15; ski boots. 439-3600.

**BEDROOM**, grey dresser, mirror,  
chest, table, bed, \$75. Tables  
maple, 2 end, 1 coffee, \$10. 439-  
3134.

## AUTOMOTIVE FOR SALE



Saab Authorized Dealer

**NEW SALEM GARAGE**

New Salem Route 85

DeWitt and Fred Carl

— NEW AND USED CARS —  
Telephone RO 5-2702

1960 Dodge Matador, 8 cylinder,  
power steering, one driver, ex-  
cellent condition. 439-2278.

ALL ROADS LEAD TO HALLMAN'S!

# DON'T MAKE A \$300 MISTAKE!

- DEAL WITH THE LEADER
- SEE THE 1967 CHEVYS
- SEE HOW EASY IT IS TO OWN ONE
- SEE THE AREA'S LARGEST CHEVY DEALER
- IMMEDIATE DELIVERY
- NO PAYMENTS TILL LATE WINTER
- WE LEASE (ANY MAKE CAR) FOR LESS

**MARSH HALLMAN**  
**CHEVROLET, Inc.**

**781 CENTRAL IV 9-5551**

Open Daily 'Til 9 P. M. Friday-Saturday 'Til 6 P. M.

**Where More People Buy For Less!**

## SKIING

**SPOKEN  
HERE**



For the finest in equipment  
and sound advice.

**SHOP  
GALLAGHERS**

We Now Have

THE "LIPE SKI  
Release Check"

Gallagher's  
**SKI**  
& Sport  
Shop

**DELMAR, N.Y.**



# Oil

**HEATS BEST  
COSTS LESS**

When You Buy From

**W. G. MORTON**

DEPENDABLE SINCE 1848

24 HR. SERVICE 438-7821

Warner G. Morton E. R. Smith  
Pres. V. Pres.

THE SPOTLIGHT

**1967 Plymouth**, rebuilt motor, excellent mechanical condition, \$100. HE 9-3791.  
**1958 Rambler**, inspected, radio, heater, automatic, as is, \$50. HE 9-3043.

**PETS**

**FOR** expert dog grooming, call Judy. HE 6-1445. tf

**WANTED TO BUY**

**WANTED TO BUY:** old clocks and watches. Call Brooks. 438-0296.

**REAL ESTATE FOR RENT**

**FOUR** miles from Feura Bush GE plant: three apartments, 2 or more bedrooms, heated. Adults. 439-4098. tf

**STORAGE** space, large barn in Slingerlands. Sanders. 439-2555. tf

**GASOLINE** Station, Delmar Four Corners. Call HO 3-2576, HE 9-1397.

**FURNISHED** apartment, three miles from Delmar, 3½ rooms, heated, Call after 7. HE 9-4688

**WANTED TO RENT**

**SMALL** house or apartment, business woman, daughter; after Jan. 15th, Tri-Village area. Box F, Spotlight. 2t128

**HELP WANTED**

**HOUSEKEEPER**, 6 days week, one in family, own transportation. HE 9-1530. tf

**WOMAN** or man house cleaning, one day week, own transportation to Van Wie's Point. Call HO 5-4279 between 9 & 5.  
**MAN** with snowblower to keep driveway clear. HE 9-2666.

**SITUATIONS WANTED**

**EXPERIENCED** bartender available for private parties. Call 439-9291. tf

**Lost & Found**

**LOST** - vicinity Jordan Blvd., Fernbank, November 9, half grown tiger kitten, male, needs special diet. Seaver. 439-4075.

**USE CHRISTMAS SEALS**



**FIGHT TUBERCULOSIS**

# Avis gives you a lift to the ski lift.

We'll rent you a Plymouth with ski rack, snow tires, heater, defroster, etc. Weekend special \$6.95 per day plus mileage. Make a date with abominable snowman.

AVIS rents all makes of cars . . . features PLYMOUTH

**For Reservations Call IV 9-5487**

**AVIS RENTACARSKI**

Central & Watervliet Aves., Albany

**WE TRY HARDER**

# ANNUAL SNOW SHOVEL SALE

at **Bodnar Oldsmobile**

**BEST  
SELECTION**

**Value Rated  
Used Cars**

**LOWEST  
PRICES**

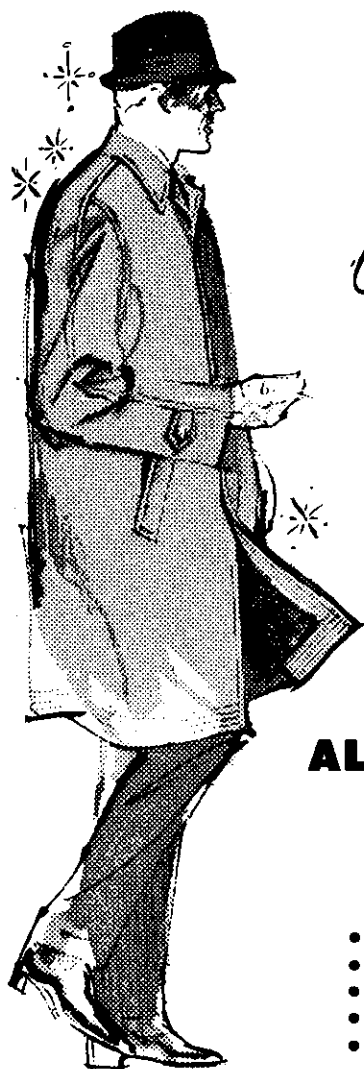
**STEP UP TO**

**Bodnar Oldsmobile**  
526 CENTRAL AVE., ALBANY





ALBANY &amp; DELMAR



*Gifts*

mean more  
when they  
come from  
Steeffel's

## PLYMOUTH

zip-in orlon-pile lined

## ALL WEATHER COAT

**34<sup>95</sup>** nat'l adv. price

- all 100% cotton
- split-raglan sleeves
- solid colors & muted plaids
- sizes 36 to 46
- regulars, shorts, longs

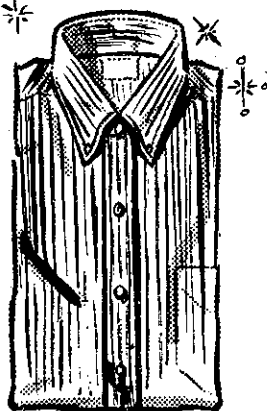
**UNLINED \$24.95**

exclusively ours!

## CORDUROY SHIRTS

**500**

Blacks, golds, blues, maroons  
and greens in tapered button-  
down collar models and conven-  
tional regular-collar models.  
S-M-L-XL



**BUY NOW! PAY LATER! USE STEEFEL'S CHARGE ACCOUNT!**

# Christmas Cards

COMPLETE STOCK

- Hallmark Christmas Cards
- Fenton Milk Glass
- Stuffed Toy Animals
- Exquisite Gift Items
- Huge Selection of Novelty Gift Items
- Christmas Card Imprinting

## CARD FAIR

52 No. Pearl Street  
Albany

## Joseph's Restaurant & Lounge

9W

Lou Frangella, Prop.

Selkirk

Caterer to Banquets, Showers, Weddings, Parties

**MUSIC FOR DANCING SATURDAY ONLY - 10-2 P.M.**

Open Daily - 12 Noon; Sunday - Open 1 P.M. **Phone 767-7571**  
CLOSED TUESDAY

## GIVE ORIENTAL RUGS

PICTURE YOUR HOME  
THIS CHRISTMAS

In it, you can have the loveliest gift  
of all - a **MAGNIFICENT IMPORTED HAND  
MADE ORIENTAL RUG**. A gift you and your  
family will cherish for years to come.

9x12, from \$295.00

Scatter sizes from \$15.00

## KERMANI ORIENTAL RUGS of SCHENECTADY

3905 State Street - (Stop 3 - Alby-Schdy Rd.)  
Hrs: Mon-Sat. 10-5:30 - Tue & Thur till 9)

**EX 3-6884**

terms available

Permit No. 10  
**PAID**  
U. S. POSTAGE  
Bulk Rate

