

# The Spotlight

VOLUME XII, NUMBER 44

NOVEMBER 2, 1967

\$1.00 PER YEAR

10¢ A COPY



PROCLAMATION — Mrs. John F. McColl, Tri-Village Blood Chairman, and Mrs. Theodore Beecher, Glenmont Blood Chairman, look on as Bertram E. Kohinke, Bethlehem Supervisor signs the proclamation making November Blood Month in the Town of Bethlehem.



These women are the committee in charge of The Fall Festival and Roast Beef Dinner to be held at Bethlehem Lutheran Church on Friday, November 3, left to right: Mrs. Paul Gassmann, Mrs. Walter Kinn, Mrs. Agnes Vandenberg, Mrs. Jacob Henkens, Mrs. Robert Millspaugh, Mrs. Jerry Jonas. (Not pictured — Mrs. Thelma Elwell.) Mrs. Robert Millspaugh is chairman of the Ladies' Guild which annually sponsors this event — the proceeds of which go to the Building Fund of the Church. Co-chairmen of the Fair this year are Mrs. Walter Kinn and Mrs. Thelma Elwell.

## WE REPEAT

The deadline for all Spotlight Classifieds is 4:30 P.M. on Friday before the following Thursday publication. All ads received after the Friday deadline will be scheduled for publication the second Thursday. If our Classified Advertisers will bear this in mind, it will help them to get their ads published when they want them.

Spotlight Classifieds: 439-4949

## Blood Program

Supervisor Bertram E. Kohinke has proclaimed November as "Town of Bethlehem Blood Program Month" in support of bloodmobile activities in the town.

The bloodmobile which is collecting blood in the Northeastern New York Red Cross Region, will be in Glenmont from 1 p.m. to 7 p.m. Nov. 2 at the Community Church.

It will visit the Tri-Village area Nov. 13 from 1 p.m. to 7 p.m. stationed at the First Methodist Church.

This will be the first chance residents of the Town of Bethlehem will have to participate in the local blood program.

Any person 18 through 59 years old is eligible to donate blood. Unmarried minors from 18 to 21 must have written permission of parent or guardian.

## Fall Festival

November 3, 1967 is the date chosen for the Second Annual Fall Festival and Roast Beef Dinner at Bethlehem Lutheran Church, 85 Elm Avenue, Delmar.

Booths will be open from 3:30 to 8 P.M. For sale will be "White Elephants," baked goods, gifts, using a unique process of oil-painting-on-tile, hand-crafted articles and religious articles.

The Family-style roast beef dinner will be served from 5 to 7 P.M. Eat as much as you want for \$2.50 per adult and \$1.00 per child under 12.

Tickets are available from Mrs. Robert C. Millspaugh, 533 Wayne Place, Delmar, or call 439-5708. They may also be purchased at the door.

The proceeds from the Festival will be donated to the building fund.

## YOUTH CHOIR NEEDED

Children between the ages of 7 and 12 are urgently requested to attend the first in a series of rehearsals for the White Christmas Festival. A special program is being planned which depends upon this singing group which will be under the direction of Mrs. James Ackerman.

Mrs. Ackerman will meet the children at St. Thomas' School on Saturday, November 4. The rehearsal is scheduled that day and each Saturday until December 9 from 10:30 A.M. to 12:00 noon. Adult supervision for rehearsals will be provided by Mrs. James Quinlan. All children in this age bracket are urged to meet with Mrs. Ackerman to take part in this very special program to celebrate the Town of Bethlehem's White Christmas Festival.

Parents may call Mrs. James Quinlan at HE 9-4202 for further information.

## TOYS NEEDED

The Senior Citizens and members of various Church groups are at work once more at the task of rejuvenating toys for less fortunate children. These toys will be distributed at Christmas as a part of the White Christmas Program.

Anyone wishing to donate old and discarded toys may leave them at the Masonic Temple on Kenwood Avenue any Friday afternoon or Saturday morning beginning Saturday, Nov. 11 and no later than Dec. 9. During the week they may be left at the Delmar Police Department. Any items too large to handle, please call Mr. Jack Weaver, 439-4087, and he will arrange for pick-up.

## Travel Movies

The Ladies' Auxiliary of Selkirk Fire Co. #1 is sponsoring the Travel Programs formerly sponsored by the Selkirk YMCA. These programs will be held on the first Friday of each month

starting November 3 and continuing through March. They will be held at 8 P.M. in the Selkirk Fire House #1 located on Maple Avenue., Selkirk.

The November showing will be by L. Husted Myers on "Our Pacific Northwest." Everyone is

welcome. Come so our traveling friends may share their experiences with you. December will be on "Bavaria and the Alps." and January on "Hawaii."

Committee of arrangements are Mr. and Mrs. Harold L. Williams and Mr. and Mrs. Clarence Klahn.



Open house for the public will be held at Saint Thomas' School on Thursday, November 2, (today), from 7:30-9:30 p.m. All are welcome. The faculty will be present to explain the various programs. This will afford an excellent opportunity for the members of the community to become acquainted with the educational accomplishments of Saint Thomas'.

## Traditional Apparel for the Young Man

- GANT SHIRTS
- CORBIN TROUSERS
- BURBERRY RAINCOATS
- ALAN PAINE SWEATERS

*Stulmaker's*  
 8 James Street  
 Just off State  
 Open Thursday to 9  
 Member Park 'n' Shop

## LETTER

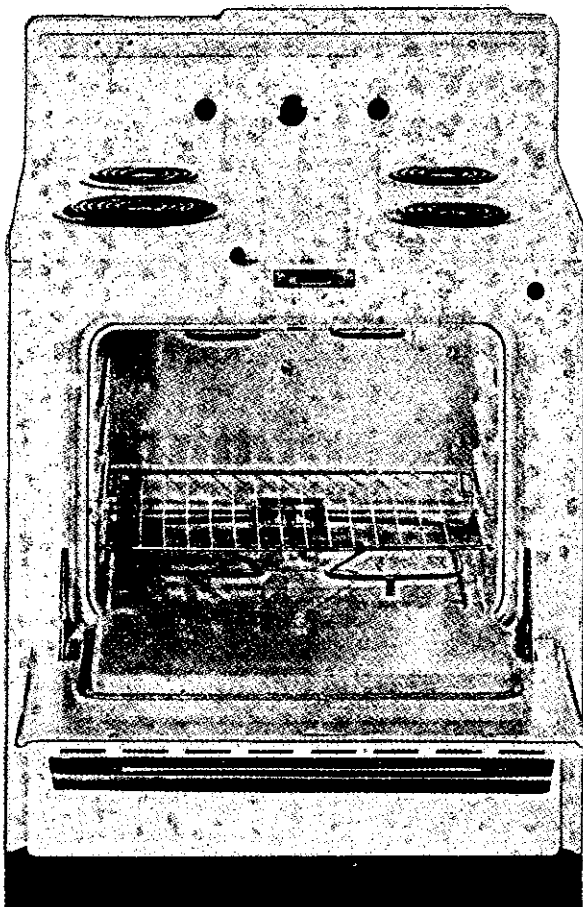
Dear Sir:

As a member of the Capitol Area Speech and Hearing Association, I am sending you the following for publication.

We are opposed to fallacious advertising based on the premise that all schools will be automatically eligible for speech therapy services if the proposed constitution is adopted.

We are also opposed to the exploitation of children with communicative disorders for the purpose of advancing a political issue.

We are further opposed to the exploitation of the speech and



your oven cleaning days are over, it's . . .



# CLEAN-A-RAMA DAYS!

NOW GET A FAMOUS GENERAL ELECTRIC P7 SELF-CLEANING OVEN RANGE

at a

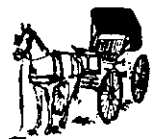
## LOW, LOW PRICE!

It Cleans Itself Electrically!

NOW **\$218.88**

**the Carriage Stop**

ANOTHER MAIN-CARE SERVICE



MODEL J328

339 Delaware Avenue - 439-2430 -

Delmar

hearing profession. (There is no public school speech therapy program directly supported, at present, by the State of New York. The proposed constitution will not provide speech therapy programs directly supported by the state if it is adopted.)

This synopsis of information is being presented after conferring with the legal representatives office of the State of New York Department of Education.

Yours truly,  
Mrs. Margaret K. Holt  
45 Roweland Ave.  
Delmar

## Addition Planned

Construction of a Sunday school addition to First Church of Christ, Scientist, has been announced by T.R. Loeschner, Chairman of the Board of Trustees.

William Heilmann and son will build the 31 x 51 addition to the present edifice located at 551 Delaware Avenue. The Heilmann Firm constructed the original structure in 1959.

Plans for the addition, as prepared by M.R. Simon, Architect, include a Sunday School auditorium, primary classroom and a

### Subscribe to The Spotlight

We're Having a

## BARN SALE!

3 days only: Thurs., Fri., Sat.  
10 A.M. till dark

Bet you never heard of a BARN SALE.

We never did either.

But did that stop us? No Sir -- I mean Ma'am. We just ploughed right ahead.

Starting today, we're having a furniture sale in our warehouse -- sorry, Barn. Frankly, we've got a little more furniture than we need right now.

So if you can use a nice, Early American, pine or cherry chair, desk, bed, hutch or whatever, this is for you. The selection is excellent, the prices are low. It's a little dusty, a little crowded, but let's face it -- it's a Barn.

Where is it?

It's Schnurr and Wood's feed barn behind the Village Shop at the 4 Corners on Kenwood. Right across from the Delmar Bakery.

Plenty of free and easy parking.

Come on over and pick yourself a bargain.

And wear your old clothes.

**THE 2nd** *Village Shop*

THE FOUR CORNERS, DELMAR

Help dew away dry skin lines  
...24 hours a day



## Helena Rubinstein ONCE-A-YEAR Skin Dew Sale

Save 5<sup>00</sup> ~~11.00 value~~  
now 6.00

Give your skin the day and night moisture it craves.

Daytime, use SKIN DEW® MOISTURIZING EMULSION, an invisible beauty treatment you wear under make-up. Starts to end dryness immediately.



Nights or nap-time, SKIN DEW MOISTURE CREAM helps fight wrinkles!

Keeps skin soft, supple, smooth and contains exclusive Collagen Protein.

Also available: 6.50 value, now only 3.50 (you save 3.00)

Limited Time Only

## L. J. MULLEN PHARMACY

"At Your Service - Everyday of the Year"

256 Delaware Avenue 439-9356 Elsmere, New York

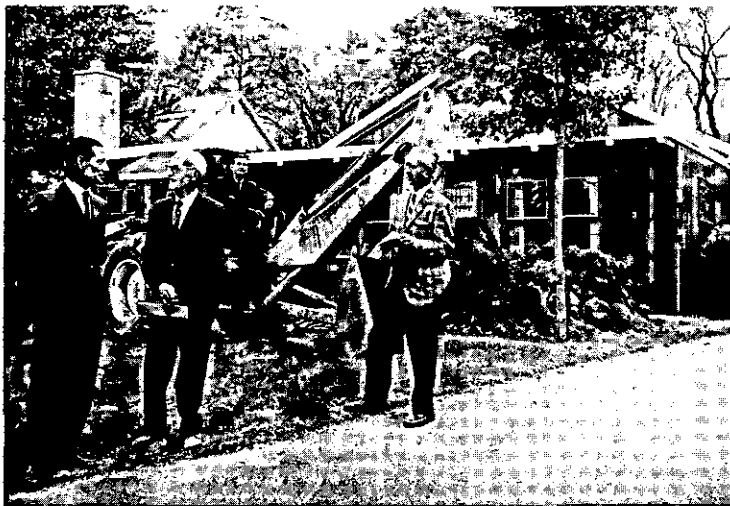
**FOWLER'S**  
Liquor Store



See ERNIE or GEORGE  
for BETTER SPIRITS

Elsmere - at - the - Light  
Parking right in front of store.  
HE 9-2613 "We deliver."

Chilled, ready-to-serve  
WINES & CHAMPAGNES



**GROUND IS BROKEN** - A Sunday School addition has been planned for The First Church of Christ, Scientist, in Delmar. Active in the plans are, left to right: Henry Heilmann, builder; Max R. Simon, architect; David Coughtry, Chairman of Building Committee; T.R. Loeschner, Chairman of the Board.

nursery. Designed with brick veneer facing and cedar siding, the new wing will blend with the existing church.

Christian Science Services were first held in Delmar in 1955 in the homes of members. Larger attendance led the groups to the Masonic Temple where official recognition was granted as the Christian Science Society,

Delmar. Status was gained as First Church of Christ, Scientist, in 1965.

The church also maintains a reading room at 397 Kenwood Avenue where the Bible and Christian Science Literature are available.

Increased enrollment has led to the plans to more than double the present teaching space. Stu-

dents up to the age of 20 are welcomed to the Sunday School where the scriptures and their application to daily life are taught. Present enrollment includes students from the Tri-Village Area, Guilderland, Selkirk, and Berne.

## Hats and Furs

Everyone is invited to a Hat and Fur Fashion Show, for the benefit of the Helderberg Workshop, being held by the Tri-Village Welcome Wagon Club for Newcomers on Wednesday, November 15, at 8:00 p.m. at the Delmar Elementary School, 445 Delaware Avenue. Hats modeled will be from Anne's Hat Box and furs will be from Beck Furs. Bring along cards, if you wish, as you enjoy dessert and coffee, too.

Chairman is Mrs. Hollis A. Swett; reservations may be made with Mrs. Roland A. Kerber, 439-5110. Tickets will also be sold at the door and lucky ticket holders will receive door prizes.

Modeling the hats and furs

**AVIS**  
RENT A CAR

5 P.M. FRI.  
TO  
9 A.M. MON.

**WEEKEND SPECIAL**

Rent a Car **\$6.95**

**PLYMOUTH** Per Day Plus 10¢ a Mile  
**SPECIAL DISCOUNT WITH THIS AD**

For Reservation, Phone  
**IV 9-5487**

**Avis Rent A Car**  
INQUIRE ABOUT OUR LOW TRUCK RENTAL RATES



**WE CARE ABOUT YOUR COMFORT  
ALL 4 SEASONS**



Fall's the time we're set to go  
Before the Icy Breezes Blow.  
Winter we watch the temperature  
Night and day your comfort's sure.  
In the Spring & Summer we're still right here  
planning ahead for the coming year.

**MAIN BROS. OIL CO., INC.**

The Home of

**MAIN CARE SERVICE**

318 Delaware Avenue, Delmar, New York

Phone 439-9951





MODELS — Left to right: Mrs. Alvin L. Tripp, Mrs. Donald W. Bunis and Mrs. Michael J. Mahoney will be among the models at the Hat and Fur Fashion Show at the Delmar Elementary School Wednesday, November 15, at 8 P.M.

will be Mesdames Samih S. Azsim, Donald W. Bunis, Robert B. Cormack, J. Grace Keers, Leonard E. King, Theodore E. Lefton, Fred W. Mable, Michael J. Mahoney, Albert J. Pistilli, John B. Rodgers, and Alvin L. Tripp.



WITH THE  
GIRL  
SCOUTS

Cadette Troop #442 recently held troop election with the following results: Patrol Leaders — Leigh Rockwood and Rosemary Catalano; Asst. Patrol Leaders — Ginny Owens and Lynn Sheridan; Chairman of the Court of Honor — Cindy Webster; Scribe and Publicity — Rosemary Catalano. Janet Kois is the Treasurer, Anita Preska and Leigh Rockwood are Juliette Low representatives and Carolyn Preska and Pat Van Galen are in charge of Rededication Ceremony. Troop #442 would like to extend a welcome also to its new

## PLANT LARGE TREES

... FOR IMMEDIATE EFFECT

Sugar  
Maples

Pin  
Oaks

Crab-  
apples

Honey  
Locust

White  
Dog-  
wood

Norway  
Maple



Visit with us  
This Weekend

**Garden Shoppe**

Wild Bird Hdqtrs.  
Great Selections

Feura Bush Road  
Glenmont, N.Y. HE 9-1835  
MON-SAT: 8-6 - SUN: 10-4

## Where Can You Buy?

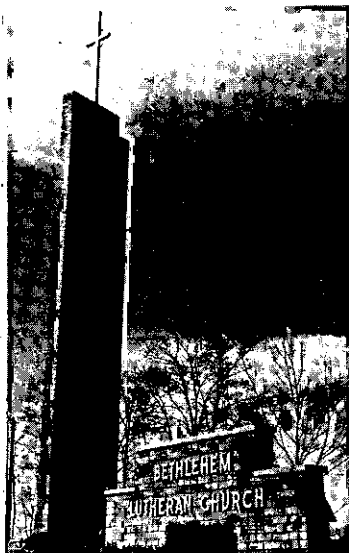
- Those tender juicy prime steaks or luscious roasts
- Baby Pork loins . . .
- Home made sausage meat (for which we are famous)
- Home baked Roast Beef and Hams

Where can you buy *all* this plus *Service too?*

**WHY, OF COURSE AT:**

**McCarrolls'**  
**THE VILLAGE BUTCHER**

279 Delaware Ave., Delmar — "Makers of Old Fashioned Barrel Corned Beef Since 1921"



**FALL FESTIVAL AND ROAST BEEF DINNER**

Friday - November 3rd.  
 Booths Open - 3:30 P.M. to 8:00 P.M.  
 Roast Beef Dinner - 5:00 P.M. to 7:00 P.M.  
 Adults - \$2.50                      Children under 12 - \$1.00  
 Family Style - All You Can Eat.

**BROWSE OR SHOP AT**

White Elephant Booth - Bake Sale Booth  
 Handcraft Booth - Arts and Paintings - Religious Items

**For Tickets:**

Call Mrs. Robert Millspaugh at 439-5708 or at Door.  
**BETHLEHEM LUTHERAN CHURCH**  
 85 Elm Avenue, Delmar

*Open*

*Another new*

**Stewart's**  
**ICE CREAM STORE**

**300 DELAWARE AVENUE (On the Corner)**

**FREE PRIZES**

For Adults  
 And the Kids

**MAKE YOUR OWN SUNDAES & Banana Splits**

**OVER 30 ICE CREAM FLAVORS**

**GIANT DISCOUNTS ON ALL STEWART'S PRODUCTS**

**OPEN 7 DAYS A WEEK**  
 10 a.m. to 11 p.m.

members, Kathy Mosher, Holly Leese, Doreen Sullivan and Connie Patterson.

**Platform**

Kenelm R. Thacher, Democratic candidate for County Legislature in the 37th District, outlined his platform in a talk to his campaign workers at his headquarters, 1 Oakwood Place, Delmar. Mr. Thacher urged his supporters to get out and make their calls because he feels victory in the air. He expects to call on over 1200 houses before election day, and the people have responded to his candidacy.

"The study and adoption of one of the forms of county executive type government is a must if we are to meet and solve the future problems of this county." Mr. Thacher is in favor of the establishment of an Albany County Planning Board. "It would increase the effectiveness of our own town's planning, and would make our participation on the four county Regional Planning Commission much more effective."

In the Mental Health field, Mr. Thacher feels that we need more effective coordination of the seventeen agencies serving the mental health needs of our county. He is in favor of new programs to help combat the growing narcotic problem, with emphasis on education of parents,



Rev. J. R. McClenaghan

**Nomansville Community Church**

For help please call 439-5457

**THE PASTOR'S PRESCRIPTION . . . . .**

What every Christian needs in these days is a C A L M plex! Fretful restlessness is opposed to true Godliness.

The Lord promises "HE WILL KEEP IN PERFECT PEACE ALL THOSE WHO TRUST IN HIM" Isaiah 26:3 another promise is from Psalm 119:165

"Great Peace Have They Who Love Thy Law and Nothing Shall Offend Thee"

and our youth as to the effects of addictive and supposedly non-addictive type drugs.

The problems of water and air pollution are another area that the candidate discussed, saying, "We must redouble our efforts to work with our neighboring counties to bring to an end these twin problems." Mr. Thacher indicated that Medicaid and Welfare costs were becoming a severe financial drain on the county, and we must look at all existing and new programs with a prudent eye to make sure we are getting a fair return for our tax dollars. Sound fiscal management can continue to keep our county taxes at a reasonable rate.

Mr. Thacher said, "We have some problems that need our attention in our town." If elected, he would do all he could to end the impasse over the site selection to connect the Slingerlands and Delmar By-Passes. These highways are only half effective without the connecting link, and every year that passes only increases the traffic problems on our residential streets. Mr. Thacher believes we need to broaden our tax base through industrial development. We have the zoned area away from the residential sites, but must improve our overall business climate.

Mr. Thacher pledged that if elected, he would consult with the people to ascertain their views, and to report to them often as to the operation of their county government.

### Dance

The Albany Jaycees will present the First Annual Winter

Ball on Saturday, December 2, at the Dewitt Clinton Hotel, in Albany. This formal dance, which is open to the public, will feature music by the Johnny Costas Orchestra from 9 p.m. to 1 a.m. and a rock and roll group from 1 a.m. to 3 a.m. Entertainment at the intermissions will be provided by the Statesmen, a leading vocal group.

### Meeting

The Delmar Home Crafts Club will meet on Tuesday, November 7, at 8:00 P.M. in the cafeteria of the Bethlehem Central Senior High School.

Instructions and demonstrations will be given for the making of an Advent Tree and a bur-lap webbing tote bag.

Hostesses for the evening are Mrs. Charles Krantz, Mrs. Darwin Benedict, Mrs. John Powers and Mrs. Robert Benedict.

Guests and new members are invited to attend.

### Sale

The First Unitarian Church of Albany, located at Washington and Robin Streets will hold its annual fall rummage sale on Saturday, November 4, from 10 a.m. to 3 p.m.

### Speaker

Rev. Edgar Holden, OFM, Conv., Superior of the Franciscan Mission House of Rensselaer, will be the guest speaker at the Annual Communion Breakfast of the Altar-Rosary Society of St. Thomas' Church, to be at Tall Timbers on Sunday, Novem-

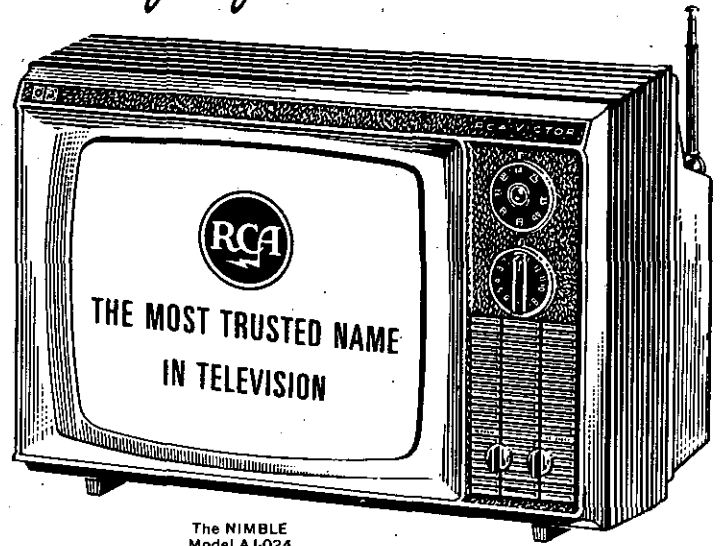
## Bethlehem Community Church

INTERDENOMINATIONAL  
Arthur Evans Gay, Jr., Minister

Sunday Morning (11:00 A.M.) and Evening (7:30 P.M.) Services now held at the Community Room - National Commercial Bank, 343 Delaware Avenue, Delmar.

Wed. Prayer Service 7:30 P.M. - Parish House, 413 Delaware Ave.

## Swinging Portable TV!



The NIMBLE  
Model AJ-024  
71 sq. in. rectangular picture

### RCA VICTOR MINIKIN PERSONAL TV

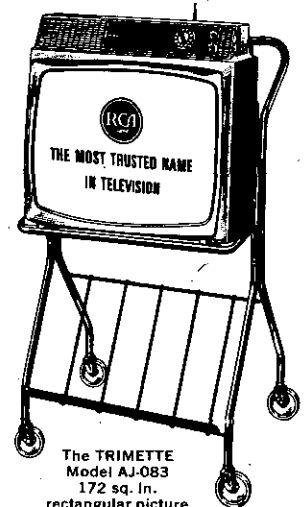
Perfect for your "second" set. 13,000-volt chassis (design average). Flexible handle for carrying ease.

# \$108



### BIG SCREEN PORTABLE TV ON ROLLABOUT STAND

Economy-priced family-size Sportabout. Powerful 20,000-volt chassis (design average). Top-front controls and 5" oval speaker. Built-in antennas.



The TRIMETTE  
Model AJ-083  
172 sq. in. rectangular picture

TV AND STAND

# \$148

RCA THE MOST TRUSTED NAME IN ELECTRONICS

**BOB Sowers'**  
**DELMAR APPLIANCES**  
239 Delaware Avenue, Delmar / 439-6723



Hours: Mon. & Tues.: 10 A.M. to 6 P.M.  
Wed., Thurs. & Fri.: 10 A.M. to 9 P.M.  
Sat.: 9:30 to 5 P.M.



# VOTE REPUBLICAN



## VOTE ROW "A" ALL THE WAY

**NOVEMBER 7, 1967**

**6:00 A.M. to 9:00 P.M.**

Bertram E. Kohinke

*Supervisor*

George J. Butman

*Councilman*

William S. Segur

*Councilman*

Margaret Kneff

*Town Clerk*

Harry B. Rezzemini

*Town Justice*

Martin J. Cross, Jr.

*Superintendent of Highways*

Kenneth P. Hahn

*Receiver of Taxes & Assessments*



Michael Ricci

*Member, County Legislature  
35th District*

Edward H. Sargent, Jr.

*Member, County Legislature  
36th District*

Edward J. Grogan

*Member, County Legislature  
37th District*

Ira Le Fevre

*Member, County Legislature  
38th District*

Rena Posner

*County Clerk*

Philip K. Raeder, Jr.

*Coroner*

Robert C. Nickel

*Sheriff*

REPUBLICAN COMMITTEE  
TOWN OF BETHLEHEM



# Be Sure to VOTE!

ber 5, after the 8 o'clock Mass.

Mrs. George Harder is the chairman of the breakfast.

## Meeting

Members of the Bethlehem Garden Club are busy gathering materials for two workshops to be held on Wednesday, November 8, at 10 A.M. at the National Commercial Bank Community Room in Delmar. One group will work on "Bottle Gardens" with Mrs. James F. Denn and Miss Emma White as leaders, while the other group will work on "Dried Flowers Under Glass" with the guidance of Mrs. Douglas Bridge. Picture frames, glass sniffers, bowls, and bottles will serve as containers for these varied and unusual decorations.

Coffee will be provided and members should bring their own lunch.

## Meeting

Miss Marjory Reid, Bethlehem's 1967 Community Ambassador to Peru and daughter of Mrs. Charles Reid, Recording Secretary of the Delmar Progress Club, will be guest speaker on November 7 at the meeting of the Government Group of the Progress Club. Coffee time will be 7:30 til 8:00 P.M. in the community room of the Delmar Public Library. Miss Reid will tell of her experience in Peru and will show slides taken there.

Mrs. V.A. Van Volkenburgh is Chairman for the program. Members are invited to bring family and friends.

## Italian Night

Gus Williams is chairman of Nathaniel Adams Blanchard Post's Annual Italian Night which will be held Saturday, November 4.

The menu this year is headed

by Red Italian Dinner Wine "out of the keg" served with appetizing antipasto, followed by spaghetti and meat balls, sausage, salad, fruit, nuts and coffee with Italian pastries.

Dinner will be served from 5:30 to 8:30, to be followed by Tommy Ippolito's music for dancing. Tickets will be limited; \$2.75 per person.

The Committee, made up of amateur entertainers, promises a full night of laughs.

## At Meetings

Richard Bartis, Melrose, New York, was elected president and James H. Carnahan, 10 Wiggand Drive, Glenmont, was elected secretary of the Albany Section

## Schools

Come to me, Earth's little ones.

Upon me you may feed.

The recipes of Hebrews, Romans, Huns  
Prepared from history's seed.

Upon my strength the world has grown  
From the darkness of the night  
And upon the seeds that I have sown  
Depends the future's plight.

The Slingerlands School, along with all other American schools, is sowing seeds for the future. Won't you visit with us sometime between November 6 and November 8 at Slingerlands School as part of American Education week whose 1967 theme is "How Good Is Your School?"

William Baist  
For Slingerlands School

The deadline for Spotlight Classified Ads is Friday afternoon preceding publication the following Thursday. Please get yours in on time.

PAID POLITICAL ADVERTISEMENT

## NOVEMBER 7th, ELECT

**KENELM R. THACHER - Democrat**  
County Legislature 37th District



Delmar, Elsmere, Glenmont  
Area

**C. EMORY LOGNER - Democrat**  
County Legislature 35th District



Slingerlands, New Scotland  
Area

### PLATFORM

1. County Executive Form of Government
2. Albany County Planning Board
3. Continue and Expand Mental Health Services
4. Continue Efficient and Economical County Government

**VOTE ROW B ALL THE WAY**

PAID POLITICAL ADVERTISEMENT

*Elect*

**EDWARD J. GROGAN**



Republican Candidate  
for

Albany County Legislature  
(2, 9, 12, 13, 14, 16 & 18 Election  
Districts) Town of Bethlehem

*Friends for Ed Grogan*

PAID POLITICAL ADVERTISEMENT

*Elect*

**BOB CONNOLLY**



Platform includes Reform in the Tax Procedures for better Equalization, Playground for the Town and Industry development. With an extensive insurance background he understands these needs and is equipped to handle your problems.

**VOTE "ROW B" ALL THE WAY**

of the New York State Swimming Officials Association at the fall meeting held at Shaker High School recently.

Charles Fake, Troy, retiring president of the association, Mr. Bartis and Mr. Carnahan attended the New York State Meeting of Officials in Queens on Sunday, October 29.

Mr. Bartis, coaches swimming in the public schools of the Troy Central School District while Mr. Carnahan is Director of Health and Safety for the Albany Area Chapter of the American Red Cross and coach of the Albany Jewish Community Swimming Team.

tally retarded at the Bethlehem Central Junior High School in Delmar.

The fall class meets every Saturday morning at 10 and is followed by an hour of instructions for the volunteers who help teach.

A special water safety emblem, designed by Mrs. Rose Joyce, supervisor for the classes, will be awarded to all instructors following the course.

Enrollment may be made in these special courses by calling the Albany Area Chapter of the American Red Cross, 465-7301.

**Meeting**

On November 14 the Delmar Camera Club will discuss and study the operation of various types of cameras, led by Frances Gardinier. Members are asked to bring their cameras, unloaded,

**Swim Class**

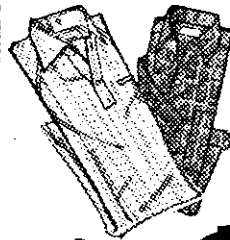
Forty five children and adults are now enrolled in the American Red Cross swimming class for Physically handicapped and men-



Sale Begins Thursday, November 2 and continues through  
Tuesday, November 7

- WIDE SELECTION -

Men's Long Sleeve



**SPORT SHIRTS**

Reg. to  
\$9 each

**\$3.39** each

Sizes S-M-L-XL



99 DELAWARE AVENUE  
ELSMERE, N.Y.  
Phone 439-3218

Convenient  
Layaway





# VOTE ROW **B**



## Democratic Candidates For Town and County Office Elect

**COMPETENT, EFFICIENT AND EAGER  
CANDIDATES**

*Pledged to Equalize the Tax Burden  
Reduce Taxes and Encourage Industry*

**C. EMORY LOCHNER**  
*County Legislature  
1 & 15 Election District  
of Bethlehem*

**KEN R. THATCHER**  
*County Legislature  
2, 3, 9, 12, 13, 16 & 18  
Election District of Bethlehem*

**ROBERT P. CONNOLLY**  
*Town Supervisor*

**WILLIAM R. RIDGEWAY**  
*Town Councilman*

**EVELYN CROSSCUP**  
*Town Clerk*

**JAMES S. CARTER**  
*Town Councilman*

**JAY S. CAPLAN**  
*Justice of the Peace*

**AUGUSTUS H. MATTICK, JR.**  
*Superintendent of Highways*

**DOROTHY STEFFENS**  
*Receiver of Taxes*

**TOWN OF BETHLEHEM DEMOCRATIC COMMITTEE**





# The Light Touch

By Bob Jackson

There ought to be a better way to start the day than by getting up in the morning.

\* \* \* \*

Careful driver: One who is still unfamiliar with the gadgets on his new car.

\* \* \* \*

The trouble with keeping a safe distance between you and the car ahead is that it makes you too close to the one behind.

\* \* \* \*

Some men have the reputation of being energetic when they're only nervous.

\* \* \* \*

We've a reputation for having a fine line of Zonolite Insulation products - and other items for the home repairman at Delmar Lumber.

## SALE ON

# GOOSEPIMPLE REMOVER



There's one thing worse than outdoor goosepimples. Indoor goosepimples. Zonolite® Attic Insulation is the cure.

Hot air from your furnace rises right through your ceilings because the old fashioned, thin fluff insulation in your attic just can't stop it.

Thick Zonolite Attic Insulation keeps the heat in. Pour Zonolite right over the old fluff, level it off at the top of the joists and leave it.

Heat bills go down, and so do goosepimples.

### PRO DELMAR LUMBER & BUILDERS SUPPLY inc

340 DELAWARE Ave • Phone HE.9.9968

and any other equipment about which they may have questions. Also scheduled on the program is a demonstration of film development.

At the last meeting of the Delmar Camera Club, top honors in the color slide competition went to Howard Gallagher for "Reflection;" Joe Dell for "Stairwell;" and James Kelly for "Trout Fishing." In the black and white print category, winners were Florence Becker for "The Tribesman;" James Kelly for "Nauset Light;" and Ed Newcomb for "Church."

## Supper

A Covered Dish Supper and Fun Night will be held by the Solo Parents Club of Albany at First Church, Clinton Square on Friday, November 3, at 6:30 p.m. All Solo parents are welcome.

## Meeting

The regular monthly meeting of the Bethlehem Business Women's Club will be held at Schrafft's Restaurant on Wednesday, November 8. There will be a Christmas Auction, with Mrs. Frederick Van Hoesen as Auctioneer.

## Dinner

A turkey dinner will be served at Trinity Methodist Church, corner of Lark and Lancaster Sts. Nov. 8, at \$2.75 for adults and \$1.50 for a child under twelve.

Reservations for 5:30 and 6:30 servings may be made by calling Miss Catherine Cross (482-4701) or Mrs. Thomas Courtney (439-1904).

## Let's Join

The Great Books Discussion group is in full swing at the Delmar Public Library. Gordon Molyneux, popular social studies teacher at the Bethlehem Senior High School, is leader for this year. He is well qualified to direct the discussions having a rare sense of humor and a way with words.

This should be a wonderful opportunity for any adult not

**Zuckman's**  
**FRESH BAKED**  
**BREAD & ROLLS AT**  
**GUTMAN'S**  
 "The Old Fashioned Meat Market"  
 - ON SATURDAYS ONLY -  
 Special orders on:  
**CORNBREAD**  
**BAGELS**  
**PUMPERNICKEL**  
**HOLLYBREAD**  
**Party RYES**  
**Party Rolls**

MUST BE ORDERED THE DAY BEFORE (FRIDAY)  
 (All prices the same as Zuckerman's Retail Bakery)  
**GUTMAN'S - 65 Delaware Ave., Elsmere - HE 9-2250**



- and best of all, the diamond ring is from ...

**HARRY L. BROWN**  
Jeweler



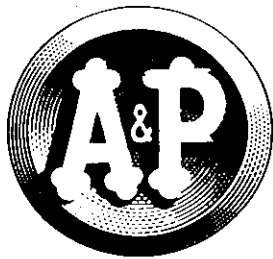
Florentine finish with fine genuine diamond.

\$155.00

## Thistle Gift Shop

363 Delaware Ave. at 4 Cor. Delmar

**DOWN-TO-EARTH LOW PRICES...and YOU CAN WIN \$1,000!**  
**we care**



**PLAY \*\*\*\*\***  
**PRESIDENTS & PRIZES**

© Copyright W.J. Jeffery 1964 - All Rights Reserved Strategic Marketing, 99 Park Ave. N.Y.C.

**\$1,000 WINNERS!**

MR. T. HEALY, WYNANTSKILL, N. Y.  
 V. URBANA, POUGHKEEPSIE, N. Y.

**\$500 WINNERS!**

R. HAMMOND, LAKE GEORGE, N. Y.  
 MR. T. GOOT, JOHNSTOWN, N. Y.  
 R. PIZER, HYDE PARK, N. Y.

**MANY MORE WINNERS TO GO!!**

**START PLAYING TODAY!**

**"Super - Right" Quality Meats!**  
**WE SELL ONLY U. S. GOV'T. INSPECTED MEATS & POULTRY!**

"SUPER-RIGHT" QUALITY... CUT FROM TENDER YOUNG PORKERS

**PORK LOIN ROAST**

NO CENTER CHOPS REMOVED!

7-RIB PORTION ROAST	LOIN PORTION ROAST	FULL RIB HALF ROAST	FULL LOIN HALF ROAST
<b>38</b> lb.	<b>48</b> lb.	<b>49</b> lb.	<b>59</b> lb.

AT A&P A RIB END CONTAINS FULL 7 RIBS - NOT JUST 4 or 5! LOOK FOR THE HALVES WITH THE CHOPS ON TOP!

**RIB ROAST** "Super-Right" 7 inch cut - First 4 Ribs lb. **89¢**

**TURKEYS** U. S. Grade "A" Oven Ready 16 to 22 pounds lb. **35¢**

**FRESH PORK SHOULDER PICNICS!** lb. **39¢**

**MORRELLS SAUSAGE** lb. (SINGLE PKG. 34¢)

**SUPER-RIGHT LUNCH MEAT** 6 oz. Your Choice **3 for \$1.00**

**KNAUSS LIVER SPREAD** 6 oz.

**SPECIAL A&P COFFEE SALE!**

**SAVE 6¢** From regular price on 1-lb. bags

**SAVE 18¢** From regular price on 3-lb. bags

**EIGHT O'CLOCK**

MILD AND MELLOW **61c** (reg. price 1 lb. bag 67c)

RICH AND FULL BODIED **RED CIRCLE** **65¢** (reg. price 1 lb. bag 71c - 3 lb. bag \$2.05)

VIGOROUS AND WINNEY **BOKAR COFFEE** **\$1.75** (reg. price 3 lb. bag \$1.93)

**67¢** (reg. price 1 lb. bag 73c - 3 lb. bag \$2.13)

**Money Saving Weekend Specials!**

**MARGARINE** NUTLEY (in quarters) 6 1 lb. pkgs. **\$1.00**

**GREEN PEAS** IONA BRAND 6 1 lb. cans **89¢**

**A&P COFFEE** REGULAR OR DRIP 2 lb. can **\$1.29**

**A&P WHITE TUNA** SOLID 3 7 oz. cans **98¢**

**\$100 WINNERS!**

Allen Mureller  
 B. Kock  
 Alice Fenty  
 Florence Loyer  
 Sadie Bedmarkiewocz  
 Mary Peters  
 Stephen Miller  
 Mary Sullivan  
 Walt Fleming  
 Mrs. VanDeusen  
 Mrs. Greene  
 Mrs. F. D. Emery  
 Kate Nuinninger  
 Mrs. F. McCarthy  
 Mrs. Paul Ashley  
 Jane Catone  
 Helen Near  
 Tim Fisher  
 Vern Thiess  
 Mrs. Fred Lee  
 Marie Niles  
 Mrs. S. Bolley  
 Mrs. Wilson Champagne  
 Agnes Pompa  
 Mrs. William Tibbets  
 Alyce Bartlett  
 Dorothy Ciani  
 Stella Blaise  
 Mr. John Kosoc  
 Robert Beatease  
 Mrs. Radez  
 Nant McClune  
 Martha McDaniel  
 Anthony Krein  
 Gertrude Hebert

**AND THERE ARE MANY MORE!**

**Bakery Special!**

JANE PARKER DELICIOUS

**SPANISH BAR**

**SAVE 20¢** 1 lb. 3 oz. cake **29¢**

**Freezer Special**

SULTANA ASSORTED

**FROZEN DINNERS**

**SAVE 6¢** 10 oz. pkgs. **2 79¢**

**Dairy Special!**

LIMITED TIME ONLY

**ALL FLAVORS** Breakstone **YOGURT**

8 oz. cups **2 25¢**

GERBER'S STRAINED <b>BABY FOOD</b> 6 4 oz. jars <b>59c</b>	ROYAL <b>PUDDING</b> regular 2 4 oz. pkgs. <b>21c</b>	A-PENN <b>Spray Starch</b> Medium or Heavy 1 lb. 4 oz. can <b>39c</b>
PARKAY <b>Margarine</b> in quarters 2 1 lb. pkgs. <b>59c</b>	COFFEE LIGHTENER <b>PREAM</b> 7 oz. jar <b>47c</b>	Purina Dog Chow 5 lb. pkg. <b>73c</b> Purina Dog Chow 25 lb. pkg. <b>\$2.99</b>

**PRODUCE SPECIAL**

**BANANAS**

GOLDEN RIPE!  
 NONE PRICED HIGHER lb. **10¢**

"If I were buying  
a SNOWBLOWER  
I'd buy . . .

*Ariens*  
**SNO-THRO**

at  
**HILCHIE'S  
AMERICAN  
HARDWARE**

235 Delaware Avenue  
Delmar

they service  
what they sell!!!!

only to profit intellectually but to have a good evening at the same time. The group is using the Fifth Year Series but that doesn't mean you must have attended previously. After all, excerpts from the classics are forever great no matter how often read.

Each meeting is quite individual so even missing the first will not interfere with the remainder of the discussions. Come along every other Wednesday - we promise, you'll be glad you did.

### Mailing Dates

Postmaster Mulholland today issued a reminder list of mailing dates for Christmas gifts and parcels.

The Delmar postal official said that these are final deadlines suggested by the Post Office Department to make sure that all mail is delivered on time.

"If the public mails on or before these suggested deadlines," Mr. Mulholland explained, "there will not be a last minute jam up in the mail stream caused by a massive influx of mail which will be more than the already overburdened postal system can handle. We are asking that the public cooperate by shopping early, mailing early and using zip codes to encourage the most efficient Christmas postal operation ever."

The postmaster noted that spe-

cial attention will again be placed on the delivery of mail to servicemen in Vietnam and the surrounding area, and encouraged the use of APO and FPO numbers on all overseas military mail.

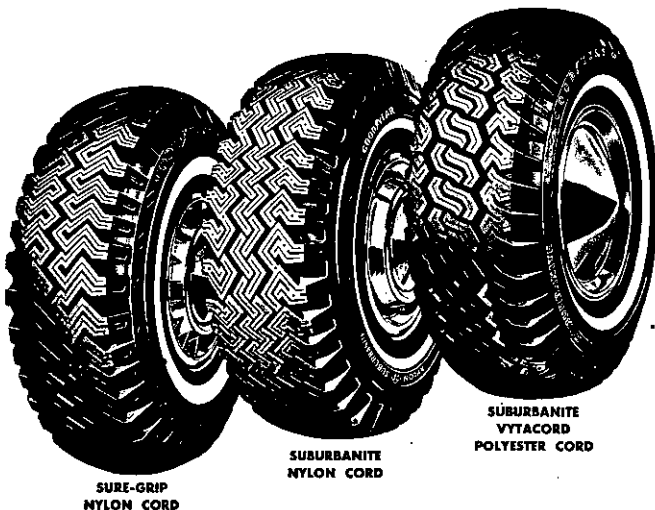
The deadlines for mail to all members of the Armed Forces abroad are:

Gifts weighing more than five pounds sent by surface postage rates, Nov. 11.

Gifts five pounds or less, plus letters and greeting cards sent at surface rates (these go by air on a space available basis), Dec. 1

AIR MAIL gifts and greetings,

# GOOD YEAR WINTER TIRES



SURE-GRIP  
NYLON CORD

SUBURBANITE  
NYLON CORD

SUBURBANITE  
VYTACORD  
POLYESTER CORD

Available Now

**SAVE UP TO 30%**

(While they last!)

- Tire Studding

- Wheel Balancing

**BILL STEWART'S SHELL**

Delaware & Euclid, Elsmere

439-5091

## *fall* Carpet Sale "Special"

Now, Save Up To 20%  
On Famous Make Brands:  
... ALEXANDER SMITH ... BIGELOW ...  
MASLAND ... MAGEE ... DOWNS

The most effective way to buy new carpeting is from Professional Carpet Consultants! Our entire stock is on Sale!



**RUG CLEANERS  
CARPET SALES**

"Shop-at-Home" . . . OUR CARPET CONSULTANT will assist you in choosing the right carpet . . . COLOR, TEXTURE AND FABRIC for your home!

Open Daily 9 to 5  
Evenings Mon. and Wed.  
7 to 9

SATURDAY 9 to 3

243 Delaware  
Avenue  
Elsmere, N. Y.

call 439-9978

Dec. 11

Deadlines for Domestic military and civilian mail are: Domestic Surface Mail, Gifts to distant states, Dec. 4; Greeting card to distant states, Dec. 10; Gifts and greeting cards to nearby areas, Dec. 13. Domestic Air Mail, Gifts and greeting cards

Dec. 19. Deadlines for overseas civilian mail are: Overseas Surface Mail, FAR EAST, Oct. 15;

OTHER AREAS, Nov. 1. Overseas Air Mail, Remote areas off main routes, Dec. 1. Areas on heavily traveled air routes, Dec. 10.

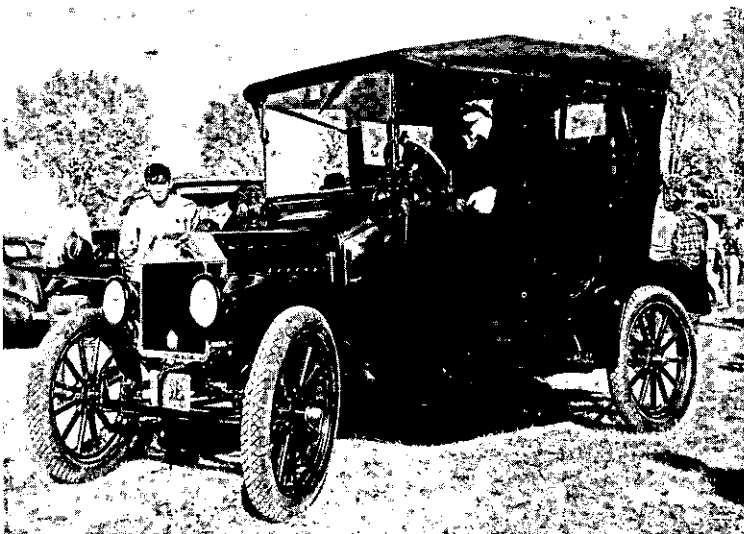
Picture Story . . .



October 15 was a warm, summer-like day during our 1967 Indian Summer as the Automobilists of the Upper Hudson Valley pulled their antique cars onto the Punkintown Fair Grounds at New Salem. There are about 60 cars in the above picture which were on display all afternoon. Awards were made to the owners for different classifications and categories.



Bob Phillips of Delmar proudly displays his 1938 Cadillac V-16.



... and this is a 1916 Ford owned by Blake Case of Delmar.

YOU SAVE MORE!  
COME SEE

**TRUCK LOAD BEEF SALE**  
**SHOP STONEWELL**  
U.S.D.A. CHOICE - NOT PRE-PACKAGED -

**SIRLOIN STEAK** 89¢  
lb. Well Trimmed  
Every cut tender and juicy

U.S.D.A. CHOICE  
**ROUND ROAST** 99¢  
ALL SOLID MEAT lb.

Freshly Sliced **BEEF LIVER** lb. **39¢**

3 lb. - RATH Hickory Smoked **CANNED HAMS** **2.99**

5 lb. - RATH Hickory Smoked **CANNED HAMS** **4.99**

Smoked, Cooked **DAISY'S** lb. **89¢**  
RATH

**HADDOCK FILETS** lb. **99¢**  
- FRIDAY SPECIAL -

**- ATTENTION DEER HUNTERS -**  
(We will skin & cut up your deer)

WE FEATURE ONLY USDA CHOICE  
**ATTENTION! FREEZER OWNERS!**

Rounds of Beef	lb. 69¢
Hinds of Beef	lb. 69¢
Sides of Beef	lb. 59¢
Fores	lb. 49¢

BOOK  
**MATCHES**  
SARA LEE  
**COFFEE CAKE**  
RIVER VALLEY  
**FISH STICKS**  
DOLE  
**PINEAPPLE JUICE**  
BLUE LABEL  
**RED KIDNEY BEANS**

50 ct. Pkg. **10¢**

**65¢**

8 oz. pkg. **3 for 100**

46 oz. can **25¢**

Tall Can **10¢**

HOME GROWN  
**CABBAGE**  
5¢ lb.

PRODUCE  
CELLO PAC (4)  
**TOMATOES**  
25¢

DAVIS STONEWELL SHOPPING CENTER

**JUNCTION HIGHWAYS 85 & 85A**  
**NEW SCOTLAND, NEW YORK**

HE 9-5398

Open Daily and Sundays  
10 A.M. to 10 P.M.

Reserve right to limit quantities  
Prices Effective Thurs., Fri., & Sat.  
11/2, 11/3, 11/4



Don Andrew, Ricky Hove, Chris Jacobsen and John Furey of the Elsmere Cub Scout Pack prepare to roast some hot-dogs at the annual Pack pop-out. (Photos by Ed Rook)

We'd never believe it, but there are pictures to prove it!

## A Hike?!!

At 9:45, Saturday, October 21, 63 boys between 8 and 10 and 44 fathers of assorted ages and weights, rendezvoused at the Elsmere Elementary School parking lot to motorcade to Camp Allen in South Bethlehem on the Annual "Pop-out" of Cub Scout Pack #258.

The motorcade did not get started right on time, but the delay was in a good cause. Patrolman Bill Pelzer of the Bethlehem Town Police who escorted the caravan had just recovered a stolen car. He took charge right away and soon had the men and boys moving through red lights as imperiously as a monarch.

At about 10:15 the group arrived at Camp Allen and after milling about a bit in the parking lot, started up a hill at nobody's direction to the grove where the "pop-out" was to be held. A "pop-out" to the uninitiated is a humorous way of describing a weenie roast to which fathers are expected to come. It is at once intended to cajole attendance and compel it by the magic of words — at all events it is cute and was probably coined by a woman.

Most of the men had brought firewood and little groups began to collect kindling and light their fires in the existing field-expedient stone fire places which had been erected by those that had gone before.

The group with Pete Ellis, the assistant cubmaster, did not light their fire because he was an insider and knew that activities were going to precede eating.

Pretty soon, Bob Ehmann, the cubmaster, blew his whistle and the boys and fathers were divided into wolves and bears for ac-

## PIERRE'S UPHOLSTERY

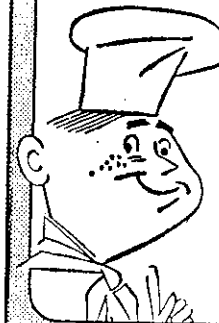
546 Clinton Ave., Albany, N.Y.  
30 Years Experience  
Call 463-3417

von Bank's  
TV SERVICE  
HE 4-5887

Quality—Responsibility—Honesty

The deadline for Spotlight Classified Ads is Friday afternoon preceding publication the following Thursday. Please get yours in on time.

# Freikofer's



DELICIOUS  
**POTATO CHIPS**  
79¢

**HO 3-2221**

Delicious Bread, Rolls, Cake

## FEATURE OF THE WEEK Old Favorites Return

Cream Puffs—(Plain or Chocolate) Every Tuesday.....59c  
Chocolate Eclairs—Every Friday.....59c  
Cocoanut Cream Pie—Every Thursday.....89c  
Chocolate Cream Pie—Every Saturday.....89c

### THURSDAY

NOVEMBER 2nd  
 HONEY NUT ROUND.....74c  
 Red Raspberry Pie.....79c  
 Chocolate Fudge Sheet.....59c  
 Assorted Cup Cakes.....39c  
 Blueberry Muffins.....44c  
 Butter Porkerhouse Rolls 44c  
 King Size Bread  
 (in the Bag).....33c

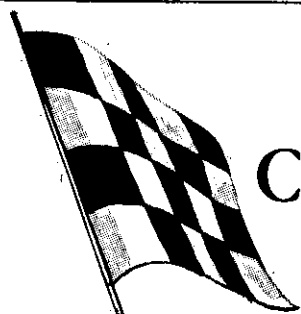
Try this on Thursday

German  
Chocolate  
Sheet Cake

**59¢**

### FRIDAY

NOVEMBER 3rd



## CHECKERED FLAG SMORGASBORD

SUNDAY, NOVEMBER 4

2 to 5 P.M.

**MENU:** Honey B-B-Q Chicken, Braised Beef a la Mode, Candied Yams, Au gratin Cauliflower, Old-fashioned Baked Beans, Potato Salad, Cole Slaw, Red Bean Salad, Seaside Salad (Shell Macaroni and Seafood), Chilled Jello Mold, Olives, Radishes, Celery Sticks, Home-made Apple Pie.

\$2.50 per Person

**ALL YOU CAN EAT!**

Luncheon Served Daily  
Entertainment Weekends

OPEN DAILY 11:30/SUNDAY 1 P.M. N. Scotland Rd., Slingerlands  
Closed Monday COOKIE OSTERHOUT, Prop.

MONTGOMERY  
WARD

ONE  
WEEK





**20%** OFF  
MATERIALS ONLY

## CUSTOM RE-UPHOLSTERY

Now . . . Don't give it away. No matter how "tired" your old chair or sofa looks today. Wards skilled craftsmen can make it as lovely as new. Ask for a free estimate now.

Shop at Home  
PHONE HO 2-5811



CALL FOR ONE OF OUR "SHOP AT HOME"  
DECORATOR CONSULTANTS



Mrs. Mildred  
McCrudden



Mr. Bob Rouselle, Jr.

No Money Down on Wards convenient terms.  
WARDS OPEN DAILY 9:30 A.M. to 9:30 P.M.

course in an adjoining field. Fathers, blessedly, were exempt, probably because the leaders were fathers, and were allowed to stand around and check off the passing of the tests by their

**WE'RE PROUD OF  
OUR BUSINESS**

**PATROON FUELS  
INCORPORATED**  
91 Lexington Avenue  
HO 5-3581

**WE'RE PROUD OF  
OUR PRODUCT**

**ATLANTIC  
OIL HEAT**

Premium Atlantic Heating Oil is Quality Refined . . . to ignite instantly, burn clean and steady . . . to give you the most for your heating oil dollar. Call NOW. We provide prompt, automatic delivery service.

Mince Pie

**79c**

- Sheet Cake.....19c
- Square Angel Food.....59c
- Oatmeal Cookies.....39c
- Family Coffee Cake.....98c
- Butter Rolls.....33c
- Sunbeam Bread.....28c

**SATURDAY**

NOVEMBER 4th

- CHOCOLATE FUDGE LAYER.....89c
- Pumpkin Pie.....79c
- Marble Sheet Cake.....59c
- Peanut Butter Chips.....59c
- Honey Pecan Ring.....59c
- Hard Seed Rolls.....33c
- Old Fashioned Bread.....35c

Try this on Saturday

Maple Walnut  
Round

**79c**

**MONDAY**

NOVEMBER 6th  
CHOCOLATE MARSH-  
MALLOW ROUND

- Lemon Meringue Pie.....74c
- Chocolate Creme Cups.....79c
- Gold-Chocolate Sheet Cake.....39c
- Cloverleaf Rolls.....59c
- Chocolate Chips.....35c
- Family Sandwich Bread 28c

Try this on Monday

Cinnamon  
Raisin Bread

**39c**

**TUESDAY**

NOVEMBER 7th

- LOUISIANA RING.....79c
- Cherry Pie.....79c
- Corn Muffins.....39c
- Banana Sheet Cake.....59c
- Sugar Cookies.....39c
- English Muffins.....31c
- Buffet Rye Bread.....33c

Try This on Tuesday

Cinnamon Raisin  
Cluster Bun

**59c**

● Indicates items available every day. The above is not a complete list of available items. For further information please call the bakery.

**Freikofer's**

QUALITY BAKING IS OUR TRADITION

# PRE-THANKSGIVING SPECIAL



## 20%

**On All Permanents**  
Monday - Tuesday - Wednesday ONLY  
**Until Thanksgiving**

### Mele's Beauty Salon



11 DELAWARE PLAZA, ELSMERE, N.Y.

HE 9-4411

Mon. - Fri. 9-9

Sat. 9-5



**WILL YOUR HEATING PLANT LAST THROUGH ANOTHER LONG, HARD WINTER?**

Why punish yourself simply because the cash isn't handy. See us for a furnace loan that will keep you comfy, cozy through the cold winter months.

**FAST SERVICE SENSIBLE RATES**

## THE HOME SAVINGS BANK



95 YEARS OF SERVICE TO SAVERS 1872-1967

MAIN OFFICE  
11 No. Pearl St.

CENTRAL AVE. OFFICE  
163 Central Ave.

COLONIE OFFICE  
34 Wolf Road

MEMBER FEDERAL DEPOSIT INSURANCE CORPORATION

BANKING HOURS: Monday thru Friday 9 AM to 3 PM - Thursday 9 AM to 8 PM

children. About this time, an ugly rumor got started that there was to be a long march through woods and up and down ravines after hot-dogs - from which fathers were not exempt!

After a half hour or so of fathers watching boys work up an appetite, the congregation returned to the grove and most of the fathers and boys started hunting for more wood while the group around Peter Ellis beamed at him as he struck a match and lighted their wood.

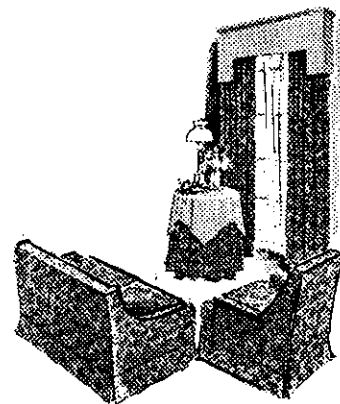
An hour or so was spent in cooking and consuming food, during which time some fathers discovered that mothers had in-

cluded ketchup but no mustard and relish because their little boy liked ketchup on his hot-dogs. A bit of trading went on with soft drinks, salt and other goodies. One boy managed to find a pond that nobody knew was there and fell in and his father began drying the boy's socks over the fire.

Finally, Bob Ehmann blew his whistle again and after the crowd collected, he confirmed the ugly rumor about marching through the woods. He then called for a volunteer to watch the fires while the rest of the troop was gone and was promptly severely trampled by volunteers, mostly

## Custom Made SLIPCOVERS

*In Time For The Holidays!*



- Tremendous New Selection of Fabrics.
- All Scotchgarded of Course!
- Our Famous Workmanship with All Seams Carefully Overlocked!

**1 CHAIR 39.95** | **1 SOFA 79.95**  
(Complete) | (Complete)

Take advantage of our FREE Shop-at-Home Service . . . just phone 489-4795.

# Marcus

OPEN DAILY  
TIL 9:00 P.M.

DECORATORS

SAT.  
TIL 6:00 P.M.

Stuyvesant Plaza, Albany

ex-army men who knew that the old adage "never volunteer" had its numerous exceptions. In order to restore order, Mr. Ehmann had to change his original call for one volunteer for fire watching to a call for one

fire watcher and three assistant fire watchers. These were chosen by lot.

Mr. Ehmann complained that the injuries he had just sustained prevented him from leading the march, but Dan Furey,



Fathers and boys of Cub Scout Pack #258 gather to hear Bob Ehmann, right center foreground, announce that he is taking them on a hike. Immediately after this picture was taken, Mr. Ehmann was severely trampled by volunteers when he asked for a father to stay behind as fire watcher. A photograph is not available because the photographer was among the trampellers.



Over the top: Andy Waugh, George Rook and Jimmy Marks near the finish on the Obstacle course at Camp Allen in South Bethlehem at the Annual "Pop-out" of Elsmere Cub Scout Pack #258.

# Fine China

## HEADQUARTERS

- Royal Worcester
- Royal Dalton
- Haviland
- Iroquois
- Lenox
- Oxford
- Syracuse
- Franconia

FRANK H. *Adams*  
JEWELERS - SILVERSMITHS

58 No. Pearl  
Cor. Steuben  
Open Thurs. til 9 P.M.



## SLINGERLANDS MARKET

1526 N. Scotland Rd., (next to Fire House)  
Slingerlands, New York  
(We reserve the right to limit quantity)

# (MEAT) Specials

**TABLERITE BONELESS RUMP OR SIRLOIN TIP**

**ROAST**  
**lb. 1.09**

**TABLERITE PORTERHOUSE STEAK** **lb. 99¢**

TABLERITE  
**SIRLOIN STEAK**  
**lb. 95¢**

**TOP ROUND STEAK**  
**lb. 99¢**

**CUBED STEAK**  
**lb. 99¢**

**RIB END PORK CHOPS**  
**lb. 55¢**

**GROUND ROUND** **lb. 99¢**

the chairman of the committee, examined him and pronounced him fit for duty.

The march started with Bob Ehmann out in front accompanied by Bill Schraa, the Secretary who was attempting to read some topographical maps which some members of the marchers cruelly suggested were from Fulton County, not Albany County.

The march took the happy throng up a mountain and down a deep ravine and into a swampy woods. The leaders, now joined by Bob McNary, the Treasurer, wandered through a trackless forest, while the rest of the pack trailed behind, hoping against hope that they knew what they were doing. One boy made his father very happy and proud by saying, "This is going to be terrible; I don't think my legs will stand it." He was known to be a boy who enjoyed lying on the couch with his father.

Bob McNary briefly took over the lead and located a couple of farmer's dogs and changed the line of marching radically, and then relinquished leadership to Bob Ehmann.

Jim Spencer, an avid golfer, marched with the rest but stopped every 300 yards or so to knock off the top of a wood flower with his swagger stick, explaining that not since he had taken up golf had he walked more than 337 yards without pausing to swing a club. He was promptly stoned by fellow golfers, but it is believed he survived.

Dan House, off-duty from the Bethlehem Police, complained continually that he was used to driving a patrol car and not walking a beat. No one had the temerity to tell a policeman, even an off-duty policeman, to shut up, but an unidentified voice whis-

# ALBANY SCOTTISH RITE BODIES

On the Occasion of the

## 200TH ANNIVERSARY OF

Ineffable and Sublime Grand Lodge of Perfection

Ancient Accepted Scottish Rite, Northern Masonic Jurisdiction, U. S. A.

*are pleased to sponsor a concert by the*

## WEST POINT MILITARY ACADEMY BAND

at the Washington Avenue Armory

**November 3, 1967—Time: 8:00 P.M.**

TICKETS FREE: They may be secured at the Scottish Rite office in the Masonic Temple, 67 Maiden Lane, Albany, N. Y., or at the following branch offices of the National Commercial Bank and Trust Company:

Colonie Branch  
Colonie

Elsmere Branch  
Elsmere

Park Branch  
Albany

**PUBLIC WELCOME AND INVITED**

business.

After an eternity, Ehmann (he is no longer "Bob" or "Mr. Ehmann") stumbled out on a macadam road and brought his troops to a halt. He took a parade rest position and said "Men, because of your poor and exhausted condition, I decided not to take you back up the ravine. After I have given you a chance to rest, I shall lead you back to camp."

He then staggered off down the road to a farmer's house where he was seen to converse with the occupant who pointed in a direction down the road. Ehmann returned and announced this his knowledge of woodlore and unerring sense of direction which had brought us safely to the road told him that we should march "this way" and he gestured in the very opposite direction from which the farmer had pointed.

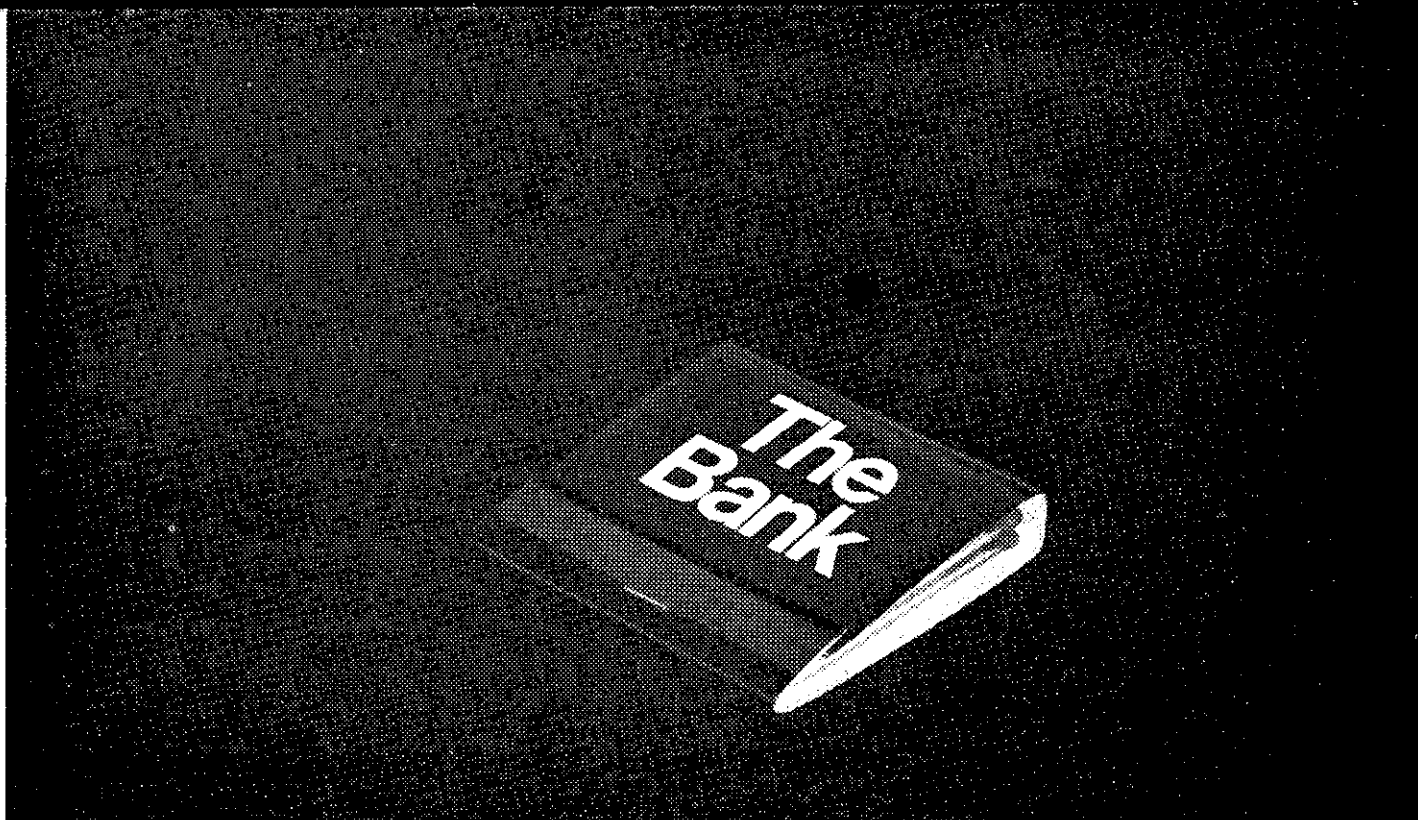
Murmurs of discontent grew to cries of open mutiny and the crew rose in revolt. Dan "Fletcher Christian" Furey was given command while Ehmann along with other leaders was set adrift.

Dan set the course in the direction the farmer had pointed and at a point a thousand yards down the road, the parking lot came in sight.

After 40 years in the wilderness, our children arrived back at their cars at just after 2 P.M. Men and boys, weeping with joy, climbed into their cars and drove off.

It was later reported by numerous men that when they arrived home, their wives suggested that since they had been out having fun for most of the day, they could do a little leaf raking for the rest of the afternoon.

"I belted her," said one man with a smile.



# The Short-Name Bank

We thought National Commercial Bank and Trust Company was a fine name for our bank.

Until we realized that people seemed to have trouble remembering it. It was just too long.

They remembered the loans they got from us.

And they remembered the checking accounts they had with us. And the savings accounts.

But when it came to our name, they just called us the bank with the long name.

We'd like to change that.

## The Bank

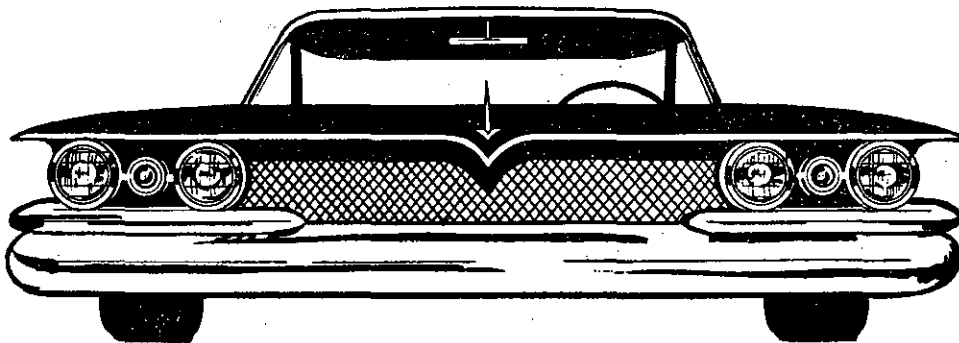
National Commercial Bank and Trust Company

# THINK FIRST

## DIRECT

# AUTO LOANS

• 10 MINUTE SERVICE •



**L . . . O . . . W**

## COST

**FIRST**

*In Account  
With One  
Office  
Is an  
Account  
With All  
Offices*

**NATIONAL  
BANK**

### FIVE FRIENDLY OFFICES TO SERVE YOU

- GUILDERLAND-WESTMERE 489-4408**  
KARNER RD. AT WESTERN AVE.
- of SCOTIA 377-6491**  
MOHAWK AVE. AT TEN BROECK
- COLONIE 869-8455**  
CENTRAL AVE. AT KILLEAN PARK
- NISKAYUNA 393-3684**  
BALLTOWN RD. AT NOTT ST.
- GLENVILLE 399-8189**  
SARATOGA RD. AT GLENRIDGE

MEMBERS  
FEDERAL DEPOSIT  
INSURANCE CORP.



• FOR ANY BANKING INFORMATION STOP IN OR CALL  
THE OFFICE MOST CONVENIENT TO YOU! •

## Meeting

The Annual meeting of the Albany County Cooperative Extension Service will be held Thursday, November 9, at 6:30 P.M. in the Clarksville Community Church, Clarksville.

Dr. E.M. Reilly, Jr., Curator of Zoology at the New York State Museum, will present an illustrated talk, "A look at the Hudson Valley."

Dr. Reilly has always been interested in conservation and wildlife, writing articles for the New York State Conservationist magazine, the Bulletin to the schools and has contributed many articles to the recent edition of Encyclopedia Britannica Junior. For the past three years he has been doing research of natural areas for the Hudson River Valley Commission.

Dinner reservations may be made by calling the Albany County Cooperative Extension Office, Albany. Deadline for making reservations will be Monday, November 6.

## Speaker

On November 21, Ralph J. Barron, Jr., administrator of the Saratoga Retirement Center, will address the Women's Society of Christian Service in the Voorheesville Methodist Church social hall at 8:00 p.m., according to Mrs. Arthur C. Hamilton, program chairman.

Mrs. Michael Frohlich, Mrs. Kenneth Bailey and Mrs. Raymond Arnold will serve on the hospitality committee.

## Swim Classes

Sixty-five Catholic Nuns have enrolled in an American Red Cross swimming and life saving course which is being conducted at Our Lady of Angels Seminary in Glenmont.

Mrs. John Joyce, class supervisor, has divided the group into two evening classes because of size and popularity of the courses. Classes are now being conducted on Monday and Friday nights from 6:30 until 7:30 P.M.

Mrs. John Frangella, District Chairman of Water Safety for the Red Cross, is supervising the

Friday evening classes while Mrs. Joyce has charge of the Monday sessions.

Most of the Sisters are in the beginning swimming class, but nine are taking Life Saving.

Sisters may still enroll in the classes, which are free, by calling the Albany Area Chapter of the American Red Cross, telephone 465-7301.

### Meeting

All mothers and expectant mothers who are interested in breast-feeding are invited to the next monthly meeting of the La-Leche League of the Tri-City area on Tuesday evening, November 14, at 8 p.m. at the home of Mrs. Gerald Casid, 15 Crown Terrace, Albany. The topic to be discussed is "Advantages of Breast-feeding to Mother and Baby," and the meeting is first in a series of interest to nursing mothers.

### Telco Hour

A portrait of Benjamin Britten, one of the world's foremost living composers, will be presented

on the Bell Telephone Hour on Friday, November 3, at 10 P.M. over WRGB.

The program, "Benjamin Britten and His Aldeburgh Festival," will include performances by such internationally acclaimed artists as the Vienna Boys Choir, Classical guitarist Julian Bream, English tenor Peter Pears and the King's College Chapel Choir. Also appearing in the presentation will be sculptor Henry Moore, composer William Walton and opera star Heather Harper.

Originated some 20 years ago by Britten and Pears, the Aldeburgh Festival, located near Britten's own birthplace on England's Suffolk Coast, has become a distinguished annual event, drawing music lovers in increasing numbers from all parts of the world. A highlight of this summer's program was the completion of a new 800-seat concert hall, the dedication of which was attended by Queen Elizabeth and her husband, the Duke of Edinburgh.

Bell Telephone Hour cameras recorded the event as well as segments of a special overture.



**Myers**  
DOWNTOWN  
ALBANY

STORE HOURS  
10:15 - 5:30  
Thurs. til 9:00



**"AT-TEN-SHUN"**

LAST THREE DAYS of MYERS 4-POINT SALE

Take advantage of this exciting semi-annual event!

# JIM SPINOSA'S MARKET

(VAN ALLEN FARMS) Open all day Sunday till 6 P.M. Some quantities limited. Prices effective: 11/2, 11/3, 11/4

ROUTE 9-W, GLENMONT. (200 yards north of Jericho Theater - 1/4 mile south of Heath's Dairy Farm - RO 7-9101)

<p>MOSEY'S, CORNED BEEF</p> <h2 style="font-size: 2em;">BRISKETS</h2> <p>lb. <b>69¢</b></p>	<p>IOWA, CORN-FED, PORK, FRESH</p> <p>whole or shank half</p> <h2 style="font-size: 2em;">HAMS</h2> <p>lb. <b>53¢</b></p>
---	---

DEL MONTE, CREAM STYLE

<b>CORN</b>	save 23¢	3 #303 cans	<b>51¢</b>
<b>CRISCO</b>	save 14¢	3 lb. can	<b>69¢</b>
<b>ACCENT</b>	save 24¢	large 4 1/2 oz. shaker	<b>69¢</b>
<b>MARGARINE</b>	save 12¢	lb.	<b>33¢</b>
<b>COOKIES</b>	save 10¢	pkg.	<b>29¢</b>

<p>U.S.D.A CHOICE, CHUCK</p> <h2 style="font-size: 2em;">STEAKS</h2> <p>Cut to order lb. <b>49¢</b></p>	<p>WILSON, CERTIFIED, VAC-PAC</p> <h2 style="font-size: 2em;">FRANKS</h2> <p>lb. <b>55¢</b></p>
---	---

## Produce

<p>SWEET POTATOES</p> <p>3 lbs. <b>13¢</b></p>	<p>APPLES (Wide Selection)</p> <p>MacIntosh - Delicious Cortlands - Spitzenberg Golden Delicious</p>	<p>LARGE, FIRM, CALIFORNIA LETTUCE</p> <p><b>19¢</b> head</p>
--	--	---

**FRESH EVERY SUNDAY MORNING**  
Golden Crust Bakery  
DANISH PASTRIES AND ASSORTED DONUTS

## BLACK ANGUS TURKEYS

AVAILABLE NOW

<p>Custom Cut and Wrapped</p> <p><b>FREEZER BUYS</b> U.S.D.A. CHOICE</p> <p>ARM CHUCK OF BEEF lb. <b>49¢</b> HINDQUARTER lb. <b>69¢</b> SIDES OF BEEF lb. <b>59¢</b></p>	<p>Special Freezer Paper Used</p> <p>FOREQUARTERS lb. <b>49¢</b> ROUNDS lb. <b>69¢</b></p>
--	--

## School News

Marjorie Cons of 19 Woodbine Road, and Edith Cohen of 58 Murray Avenue, Delmar, students at the University of Rochester, will spend the 1967-68 academic year at The Sorbonne, France, under Rochester's Junior Year Abroad Program. Both girls are majoring in French Literature.

...

John A. Williamson of 4 Bailey Ave., Delmar, senior at Siena College, has been named to "Who's Who" Among Students in American Colleges and Universities." Election to "Who's Who" is based on scholarship, leadership, citizenship and promise for the future.

...

Patricia Lynn Clark, daughter of Mr. and Mrs. L.H. Clark of 43 Oldox Road, Delmar, is on the Dean's List at Wheaton College, where she is a junior. She is active in the Student Government Association and the "Tritons," the synchronized swimming group. She is a 1965 graduate of Bethlehem Central.

...

Charles R. LaRose, of 15 Brookview Avenue, Delmar, a senior at the State University College in Brockport, has been elected to "Who's Who Among Students in American Universities and Colleges."

Election to "Who's Who" is based on academic and personal qualifications. Candidates must have a minimum academic grade average of 2.5 for at least two semesters of full time academic work.

...

Juanita Lento, a sophomore at the University of Hartford,

## Appointed

Conservation Commissioner R. Stewart Kilborne recently announced the appointment of an area man to a top administrative position in the Department's central engineering unit.

Robert A. Cook of Font Grove Road, Slingerlands, was named Assistant Director of the unit responsible for Department engineering programs.

Mr. Cook has been with the Conservation Department since 1958, starting as a hydraulic en-

gineer with the Division of Water Power and Control. He is presently assigned as an associate hydraulic engineer with the Division of Water Resources and is secretary to the State Water Resources Commission.

He attended Middlebury Col-

lege (Vt.) and is a graduate of Rensselaer Polytechnic Institute (B.M.E.) Mr. Cook is married and has three children. His appointment as Assistant Director is effective Nov. 9.

Subscribe to The Spotlight

### General Insurance

### Time Payments

### Surety Bonds

## Frank G. Coburn, Inc.

283 Washington Ave.

Albany, N.Y.

Phone Albany HO 3-4277 - 8-9



**THE GOOD GUYS WANT YOUR BUSINESS!**

**ALBANY DODGE**

## HAND CRAFTED PINE

Tables Spice Shelves Chests Cobbler's Benches and

**other Early American items in solid pine.**

Antique finish a specialty

ST 5-0643 - after 7 P.M.

W. P. Vrooman

## CONCERT

ALBANY SYMPHONY ORCHESTRA

Julius Hegyi, Conductor

TUESDAY, NOVEMBER 7 - 8:30 P.M.

PALACE THEATRE, ALBANY, N.Y.

Theodore Lettvin, the brilliant young American pianist, guest artist

Tickets available at box office evening of concert or Call 465-4755

© 1967 Bakers Franchise Corp.

The kind of good taste you never thought you'd



the University of Hartford.

Miss Lento joins the University Players after previous roles in "The Young and Fair," by N. Richard Nash; "Blithe Spirit," by Noel Coward, and "The Rose Tattoo," by Tennessee Williams. She has also appeared in summer stock at the Priscilla Beach Theatre in Plymouth, Mass.

Dance training at the Classique Dance School in Delmar, and voice lessons at the Bryn Mawr Conservatory of Music in Bryn Mawr, Pa., are also among the attributes Miss Lento brings to the University Players.

She lives at Roselawn Park Estates in Central Valley, N.Y.

## Meeting

Mrs. Ralph Cohen of the League of Women Voters will speak to Bethlehem Senior Citizens today. She will discuss the new estate constitution which will be presented to the voters on Tuesday, November 7.

## Bake Sale

The Annual Election Day Bake Sale sponsored by the WGCS of the Clarksville Community Church will be held at the Clarksville Fire Hall November 7 from 9 A.M. to 6 P.M.

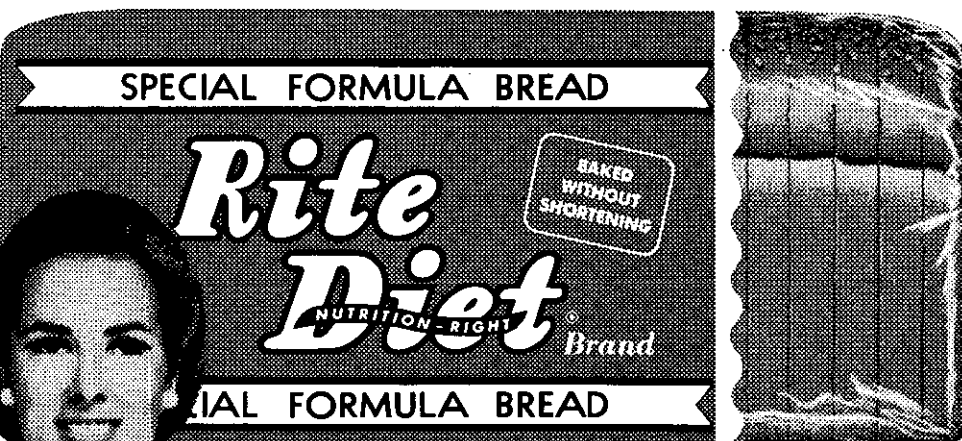
## Meeting

The Women's League of the Delmar Reformed Church will hold its next meeting on Tuesday, November 7, at 8 o'clock. The meeting will be a workshop for Christmas decorations.

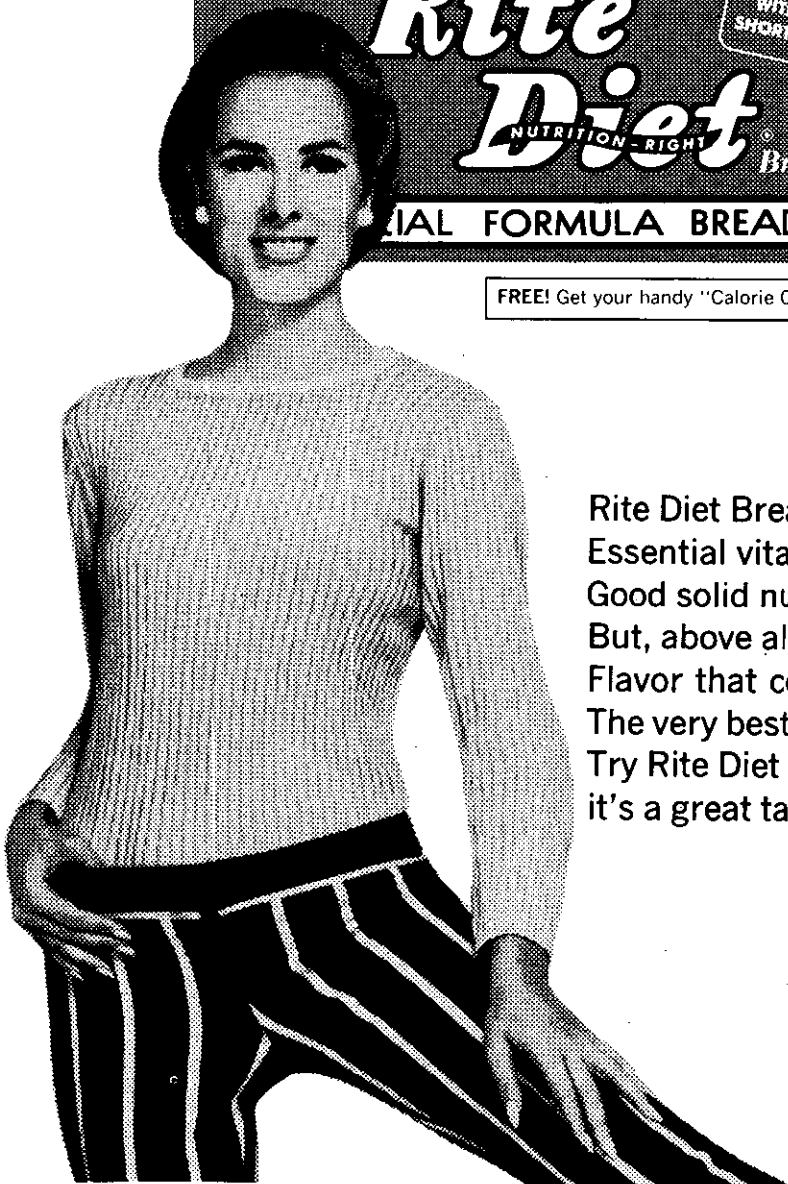
Mrs. H.C. Whitbeck will have the devotions.

Hostesses will be: Mesdames Howard Geyer, Allen Hogancamp and Frank Conley.

# mind in a reducing diet.



FREE! Get your handy "Calorie Counter" where you buy RITE DIET Bread.



Rite Diet Bread has a lot of important things. Essential vitamins. High quality protein. Good solid nutrition. But, above all, Rite Diet Bread has flavor. Flavor that comes only from premium ingredients. The very best. Try Rite Diet Bread today. Toasted or in sandwiches it's a great tasting bread.

Baked by

*Freihofer's*

# COME TO OUR SENSATIONAL BEEF SALE!

NEVER BEFORE! THIS QUALITY BEEF AT SUCH LOW . . . LOW PRICES!

• YOU SAVE CASH AND GET STAMPS TOO!



**Star**  
SUPER MARKETS  
WE SERVE YOU BETTER  
WE SAVE YOU MORE

QUANTITY RIGHTS RESERVED

PRICES EFFECTIVE THURSDAY THRU SATURDAY

## Frozen Foods

River Valley Frozen — 9 oz. Pkg.

**French Fried Potatoes 11¢**

## Dairy Selections

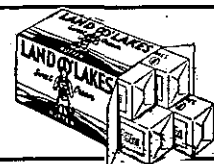
Starlite — All Flavors

**Ice Cream Half Gal. Pkg. 49¢**



Grade "A" Large White

**Eggs doz. 39¢**



Land O'Lakes

**Butter lb. qtrs. 79¢**

Imperial

**Margarine lb. qtrs. 35¢**

Philadelphia

**Cream Cheese 8 oz. pkg. 29¢**

## Fresh Fruits

Golden Ripe

**Bananas lb. 10¢**

## U.S. #1 Apple Sale!

MC INTOSH DELICIOUS CORTLAND  
4 lbs. 39¢ 3 lbs. 39¢ 5 lbs. 39¢

U.S. Prime — Blade Cut Chuck

**Roast or Steak lb. 49¢**

Semi Boneless

**Chuck Roast lb. 69¢**

Boneless Cross

**Rib Roast lb. 99¢**

U.S. Prime Boneless Rolled, Bottom Round

**Roast Beef lb. 99¢**

Grade "A" Maine — 4 1/2 to 5 lb. Average

**Roasting Chickens lb. 49¢**

Fresh . . . Lean **Ground Chuck**

Family Pack — 3 lbs. or over Pound Pkg. **79¢**  
lb. **69¢**

Martinez's Pink Rose Fully Cooked

**Smoked Hams** Shank Half lb. **59¢**  
Butt Half lb. **69¢**

## Good Groceries



Camp — Reg. lb. can

**Pork & Beans 2 for 25¢**

Dole — Giant 46 oz. can

**Pineapple Juice 22¢**



Stokely's — Tall 303 Can

**Fruit Cocktail 19¢**



Campbells — Reg. 10 1/2 oz. can

**Tomato Soup 10¢**

Tasty

**Dog Food Reg. lb. can 7¢**

Gold Medal

**Flour 5 lb. bag 49¢**

Pillsbury's — White, Yellow, Chocolate

**Cake Mixes Reg. pkg. 25¢**



**Tide Giant pkg. 69¢**

Maxwell House — Giant 10 oz. jar

**Instant Coffee \$1.19**

# RECREATION PROGRAM

by William Fuller

## Soccer

The Bethlehem Recreation Saturday morning boys' & girls' program concluded on October 21. A total of 73 boys participated in the six week program held at Hamagrael, while 15 girls participated in the program held at the Jr. High School. The boys played in a four-team league with 12 games being scheduled for each team. Members of the winning team received Bethlehem Recreation Program Emblems supplied by the Bethlehem Rotary Club. All participants received Bethlehem Recreation Certificates. The program was supervised by Richard Elliott, Hidreth Bailey, James Cronin and William Fuller.

Members of the winning team included Mike Harder (Capt.) Scott Wight, Mark Eckhard, Eric Barvich, Mark Kerrigan, Mark Abraham, Mark DeVito, Phil Ackerman, Jerry Dare, Bruce Buchanan, Mark Leonard, John Giordano, Dave Kinard, Mark Peckham, Tom Minnich and Rich Bone.

## Final Standings

	W	T	L	Pts
Leopards	5	5	2	15
Tigers	4	5	3	13
Panthers	4	4	4	12
Lions	2	4	6	8

## Week-End Swims

The Sunday Family Swims which began September 10 have been steadily increasing in attendance. Sessions are held at the Bethlehem Jr. High School between 1:30-2:15 P.M. & 3:00-4:15 P.M. Families residing in the Bethlehem Central School District or the Town of Bethlehem may attend this popular activity. No admission is charged and all children must be accompanied by an adult. The Saturday Co-Ed Swims will begin November 18. Sessions will also be held at the Jr. High School during the same time periods. All children & students attending must be able to swim. There

will be no admission charged for this activity.

## Youth Center

The Bethlehem Youth Center, located in the Jr. High School on Kenwood Avenue will be open for jr. high and high school students (grades 7-12) as scheduled below.

Monday - 2:00-4:30 P.M.

Tue.-Fri. - 2:30-4:30 P.M.

Friday - 8:00-12:00 P.M.

Saturday - 1:30 - 4:30 P.M.

8:00-11:30 P.M.

All jr. high students must leave

the Center at 10:00 P.M. During school vacations, Youth Center hours will be announced at the Jr. High & Sr. High Schools. All Students using the Center must purchase a Youth Center Card for \$2.00. Students may pay 50 cents for each admission, which will be credited toward the purchase of a card.

## Promoted

The Board of Directors of the Research Foundation of State

University of New York, Albany Office, has appointed Comptroller Robert G. Parr as Treasurer.

Mr. Parr resides at 29 La Grange Road, Delmar, with his wife, Josephine, a teacher in the Greenville Central School System. He became associated with the Foundation in September of 1961 as Accounting Manager and was appointed Comptroller in January of 1963.

The new Treasurer holds a Bachelor of Science degree from Rider College in New Jersey as

# Don't tell Mr. Jackson but we've been brushing his teeth since Christmas.

He's spent 34 perfectly happy years convinced that he brushes them himself. Then his wife gave him an electric toothbrush for Christmas. And he still thinks he brushes them himself. Why spoil it. Why let him know that we've also been shaving his beard, shining his shoes, pressing his pants, cooking his steaks and helping his pretty wife around the house. A man's got to have his pride.

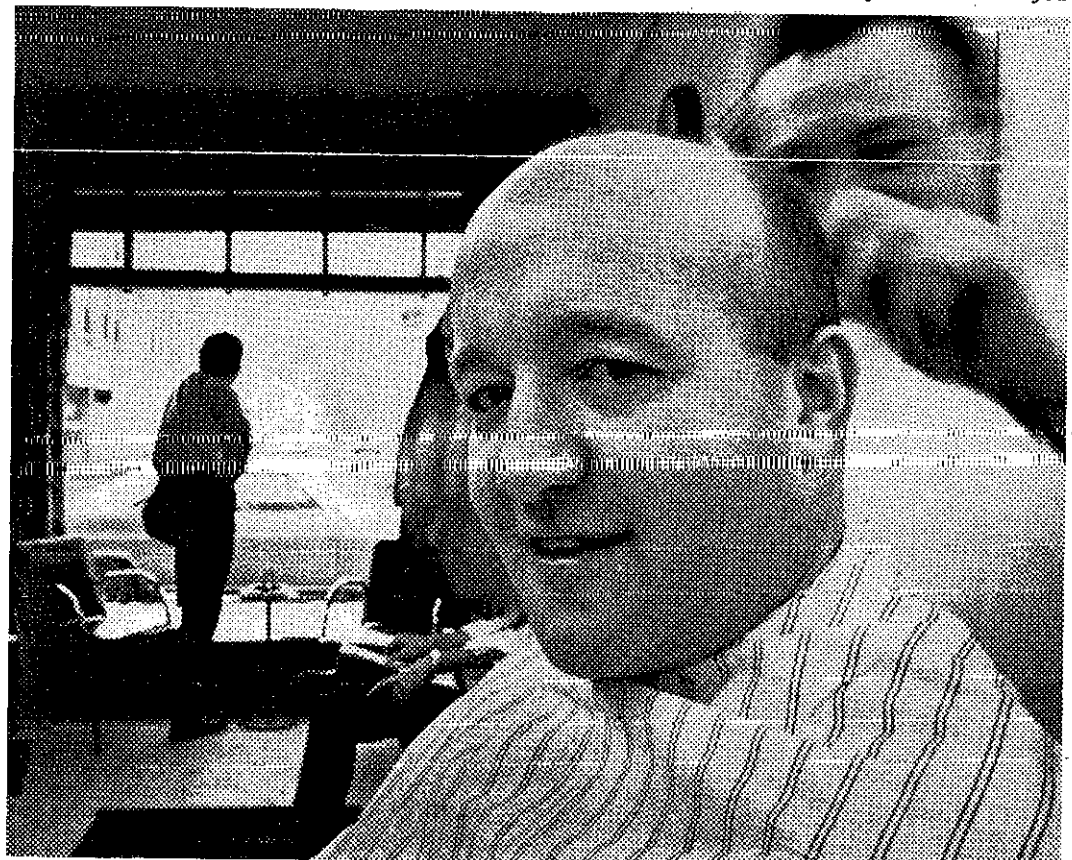
Besides, Mr. Jackson's no different

from anyone else. Nobody ever thinks about electricity, let alone about us. Such is a power company's lot in life. It makes us kind of proud to be doing such a good job.

But there is one thing we'd like to tell Mr. Jackson: We take it as a compliment when he takes us for granted.

## NIAGARA MOHAWK

Working hard to make electricity work harder for you



# WURLITZER

ONCE-A-YEAR FACTORY AUTHORIZED

## ORGAN SALE



"TRI CITY'S LARGEST SELECTION!"

# BROWN'S

PIANO & ORGAN MART INC.

(Near The Underpass)  
**\$699** 1047 CENTRAL AVE.  
 ALBANY, N. Y.  
 Phone 459-5230

In just 15 minutes you'll be playing simple tunes — and 27 popular songs in only a few short months. A Wurlitzer organ in the home becomes the center of many hours — hours when you, your family and friends gather around the organ with YOU in the spotlight playing like you've always dreamed. Sound difficult? Far from it! With the exclusive Wurlitzer Hobby Lesson Course anyone can learn to play in no time.

Never Before So Much Quality at So Low a Price . . . Magnificent in Tone, Versatility and Special Effects



Robert G. Parr

well as a New York State certificate as a Certified Public Accountant. Before becoming affiliated with the Foundation, he was employed in the Kingston Office of the national accounting firm of Peat, Marwick and Mitchel.

Mr. Parr is a veteran of World War II, having served with the U.S. Army Infantry in Europe from 1943 to 1946.

## Pizza Drive

Once again the American Field Service Club of the Bethlehem Central Senior High School will be selling pizzas in order to raise funds to pay for the cost of its program. The cheese and tomato pizzas, 15 inches in diameter, will be sold for \$1.25 from now through Nov. 11 by student representatives visiting homes in the area.

The purpose of the AFS Club is to promote international friendship and understanding in

today's world. The program consists of two reciprocal plans: one, to bring a foreign student to our community for the school year and the other to send a Bethlehem Central student abroad for two months of the summer. This year, two BC students, Vicky Wirth and Dave Fry, spent their summer in South America and we now have Celia De Sousa from Brazil spending a year in Delmar with the Cameron Brown family.

In order to keep the AFS Club operating it is necessary to have the support and cooperation of the entire community.

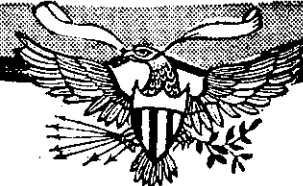
## OPEN HOUSE

There will be an Open House at Bethlehem Central Senior High School all day Wednesday, November 8, in recognition of National Education Week.

Coffee will be served at 2:45 P.M.

## TOO LATE TO CLASSIFY

**MERCHANDISE FOR SALE**  
 ROUND table, 42", formica top, 2 chairs, \$65; deep rose davenport, \$25. 439-9148.  
**PERSIAN** lamb coat, mink collar & cuffs, size 10-12, excellent condition. 434-3633 or IV 9-0659.  
**DAVENPORT**, brown; pair Duncan Phyfe end tables. HE 9-3727.  
**GARAGE SALE:** Furniture, girl's bicycle, etc., odds and ends, on Saturday, November 4, from 9 A.M.-4 P.M. 25 Groesbeck Place, Elsmere.  
**SNOW TIRES** 7:50x14 tubeless suburbanite, 3,000 miles with Dodge wheels, 2/\$20. HE 9-2579.  
**AUTOMOTIVE**  
 1959 Ford, runs good. Call 765-4025.  
**HELP WANTED**  
 CLEANING woman, 10 A.M.-4 P.M., Mon., Wed., Fri. Must have transportation (Helderve area) Slingerlands. 439-6407 after 5 P.M.



The Ultimate Selection of Fine  
**COLONIAL FURNITURE**

Come in . . . enjoy leisurely Shopping . . . Choose from famous brand names.

**ROUTE 9 LATHAM**  
 Just South of Traffic Circle  
 Evenings 'til 9  
 Sat. 'til 5  
 Convenient Terms

**HOUSE OF MAPLE**

## BODNAR'S BEST BUY!

### 1965 DYNAMIC "88"

4-door Hardtop  
 Green - Matching Vinyl Interior  
 Automatic Transmission - Power Steering - Power Brakes

**\$1650.**

## BODNAR OLDS

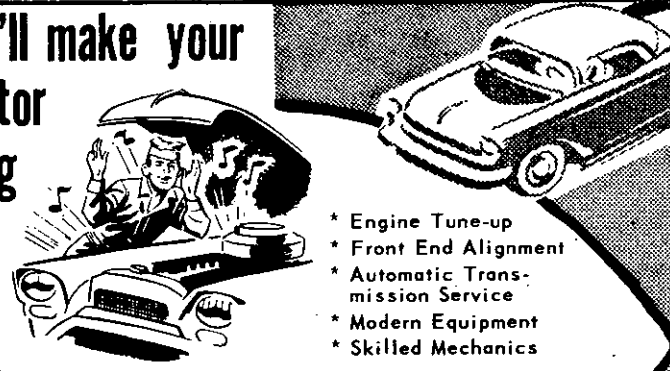
526 CENTRAL AVE.

482-4493

482-4494

Member of Albany Auto Dealers Association

We'll make your motor sing



- \* Engine Tune-up
- \* Front End Alignment
- \* Automatic Transmission Service
- \* Modern Equipment
- \* Skilled Mechanics

## BAILEY'S GARAGE

Phone Delmar HE 9-1446  
 Oakwood Rd., Elsmere

HE 9-4949

SPOTLIGHT CLASSIFIEDS

HE 9-4949

**CLASSIFIED AD POLICY**  
Classified Ads in the Spotlight must be paid for when the ad is submitted. We must enforce this policy strictly. Our rates are too small to permit invoicing and bookkeeping on these accounts. Please do not ask us to make any exception to this rule.

Your copy and remittance must reach us on Friday before 4:30 P.M. in order to appear in the following Thursday issue.

**CLASSIFIED ADVERTISING RATES**

10¢ per word for each insertion; \$1 minimum.  
**CALL HE 9-4949**  
Write, or stop in at our convenient office:  
154 Delaware Avenue

**ALTERATIONS & SEWING**

**ALTERATIONS,** dressmaking. tf  
Diane. HE 9-5740.

**APPLES**

**BEST PLACE TO BUY**

Dressed Fowls - Fresh Brown Eggs  
**FRESH DUG POTATOES**  
SWEET CIDER  
PUMPKINS  
McINTOSH APPLES  
**HASWELL FARMS**  
Route 32 at Murray Avenue  
439-3893 Delmar

**BLACKTOP**

**LUZZI BROS.,** Blacktop Paving:  
Parking lots, driveways, garage floors, sidewalks. Free estimates.  
482-3484. tf

**CARPENTRY**

REMODELING—All types of carpenter work, Ed Hehre, HE 9-1198; Hank Ertel, HE 9-1048. tf

**ADDITIONS,** remodeling, stairs, bookcases. General repairs. Arthur Molle. HE 8-7165. 6t1129

**PLAYROOMS,** complete kitchens, counter tops, floors, ceilings, painting, roofing, furniture repaired, shelving, shop work. HE 9-5342. 4t1116

**CLEANING SERVICE**

**LOCHMOOR** Window Cleaning Co. Resident and office maintenance, complete. IV 9-0121 or 489-2474. tf

**COPYING SERVICE**

**XEROX COPIES** while you wait. Grover Stationery, Delaware Plaza, Delmar, N.Y. tf

**DRAPERIES**

**DRAPERIES** and bedspreads, custom made and alterations. Free estimates. Call Barbara Schoonmaker. 872-0897. 9t1228

**DRIVER TRAINING**

**Albany Driving Academy**

67A Edgewood Ave., Albany  
Beginners - Intermediates  
Brush-Up  
CARS AVAILABLE FOR  
ROAD TESTS  
Standard & Automatic  
Call HO 2-1309

**EXCAVATING**

**BULLDOZING** — ditching — cellars. Septic systems. Fill top soil. Kastle Excavators. 768-2146. 4t1116

**FIREPLACE WOOD**

**HARD,** seasoned fireplace wood. Call Albany IV 2-5231. 5t1123

**FURNITURE UPHOLSTERY**

**DROZDOL** Upholstering Service. Experts in home furniture upholstery. 16 Judson Street. HO 5-6795. tf

**FUNERAL DIRECTORS**

**M. W. TEBBUTT'S SONS**  
Albany Delmar  
420 Kenwood Ave.  
489-4451  
Serving All Faiths  
For Over 100 Years

**FURNITURE REFINISHING**

**REPAIRING,** refinishing furniture. Antique restore. French. HE 4-0633. tf

**HAYRIDES**

**HAYRIDES!** on the farm. Call 439-2605. 4t1116

**INSTRUCTIONS**

**DENTAL Assistants.** To meet the demand for trained Dental Assistants the nonprofit ROCHESTER DENTAL ASSISTANTS SCHOOL is accepting Out-of-town students for the four month courses beginning February or July. Morning, afternoon, or

evening classes. Living accommodations available. Placements Assistance. Contact 235 Park Avenue, Rochester.

**POPULAR** Singing — thorough basic technique. Dorothy Dreslin, Albany. HO 3-3040. 4t1119

**CLASSIQUE DANCE SCHOOL**

154A Delaware Avenue  
CHILDREN AND ADULTS  
PRIVATE OR GROUPS  
All Types of Dancing and  
Body Conditioning  
HE 9-3331 Bagha Fallett

**JEWELRY**

**EXPERT WATCH AND JEWELRY** repairs. Diamond setting, engraving wedding and engagement rings, reasonable. Your trusted jeweler, LeWanda, Delaware Plaza Shopping Center. HE 9-9665.

**LIQUORS & WINES**

**SLINGERLANDS PACKAGE STORE.** Complete line. Deliveries. Discount on case lots. Party consultants. Open 10 A. M. to 10 P. M. Phone HE 9-4581. tf  
**O'ROURKE'S** Liquor Store, Corner Elm Avenue & Jericho Road, Selkirk. tf

Spotlight Classified will do practically anything!

**THE LOWEST LIQUOR PRICES**

in the area — on all popular brands  
at

**VOORHEESVILLE LIQUOR STORE**

3 South Main Street  
VOORHEESVILLE, NEW YORK

— DON'T GO MILES FOR LOW PRICES —

PATRONIZE YOUR LOCAL DEALER

MONDAY-THURSDAY, 9:30-9:00 — FRI.-SAT., 9:30-10:00

RO 5-2683

**Now! Just in time for the Holiday**

Call The Old

**Reliable UPHOLSTERY**

Under Original Ownership for Over 40 Years



"NO JOB TOO SMALL OR TOO LARGE"

QUALITY SERVICE SINCE 1912

FREE ESTIMATES . . . ALL WORK DONE IN OUR SHOP  
(Operated by Barry Swire)

118 ARCH ST., ALBANY

436-9517

IF NO ANSWER IV 9-4516



CALL . . .

**438-8461**

A CALL WILL SHOW YOU WHY IT PAYS TO LEASE FROM . . .

**ALBANY DODGE**

LEASING CORP.  
949 CENTRAL AVE.  
ALBANY, N.Y.

**MASON WORK**

**EXPERIENCED**, all types masonry, new or repairs. Guidara. HE 9-1763 evenings. tf

**MOVERS**

**D. L. MOVERS**. Local and long distance moving. Reasonable rates. No job too small or too large. Dick Leonardo. HE 9-5210. tf

**MIMEOGRAPHING SERVICE**

**REASONABLE RATES** - Mimeographing - stencils cut - addressing - mailing, Delmar, N.Y. 439-3383. tf

**ORIENTAL RUGS**

**OVER 2000** new & used orientals. Sizes from 1'x2' to 15'x30'. Room sizes from \$195.00. Complete Line of Broadloom carpetings. Washing & repairing of oriental rugs by Native expert. Kermani of Schenectady, Stop 3, Albany-Schenectady, N.Y. EX 3-6884 or IV 2-0457. tf

**PAINTING & PAPERHANGING**

**INTERIOR**, exterior painting. Free estimates. Guaranteed. Insured. Jim Vogel. HE 9-9718. tf

**INTERIOR** and exterior painting. Also carpentry work. Frank Salisbury. Days: HE 9-5527; nights: HE 9-1355. tf

**EXTERIOR** painting (top quality), free estimates. (Extab. 1942) James Lenney. HO 2-2328. tf

**PERMANENT WAVING**

**SPECIALIZING** in Breck, Realistic, Rayette and Caryl Richards permanents; hair tinting and bleaching. **MELE'S BEAUTY SALON**, Plaza Shopping Center. HE 9-4411. tf

**PLUMBING & HEATING**

**EXPERT** workmanship in all phases of plumbing and heating. Fully insured. 24 hour service. No job too small. Call B.P. Wood, Plumbing & Heating. 439-9454. tf

Subscribe to The Spotlight

**SCISSORS SHARPENED**

**SCISSORS SHARPENED**, 6 pairs med. size, \$2.00 also pink-shears saws, hair clippers, lawnmowers, knives. Called for and delivered HE 9-5156 (if no answer - Call HE 9-3893) tf

**SEPTIC TANK SERVICE**

**NORMANSKILL** Septic Tank Cleaners. We install dry wells, septic tanks, drain fields. 767-9287. tf

**DELMAR SANITARY CLEANERS** Serving Tri-Village area over 20 years. HE 9-1412. tf

**SNOWBLOWERS**

**SNOWBLOWERS: Sales & Service**. Hilchie's Hardware, 235 Delaware Ave., Delmar. 439-9843. tf

**TREE SERVICE**

**BROWNIES TREE SERVICE**. Tree stump removal. Insured. Free estimates. IV 2-5031. 5t1116

**HERM'S Tree Service**. IV 2-5231. 5t1123

**TUTORING**

**ELEMENTARY** subject, high School English, Ancient History, elementary French. 439-4805. 3t112

**WATCH REPAIRING**

**WATCH** repairing, expert workmanship. All work guaranteed. Also engraving, diamond setting, watch bonds. Harry L. Brown, Jeweler, 4 Corners, Delmar. 439-2718. tf

**MERCHANDISE FOR SALE**

**ANTIQUES** bought and sold at the sign of the Coffee Mill. 67 Adams Pl., Delmar. HE 9-1021. tf

**PIANOS - MASON & HAMLIN**, Knabe, Fischer, Weber and Stark, also fine selections of slightly used pianos. Call A. Andrew Gigliotti. HO 3-5223. tf

**UNICAP** Vitamin with minerals, one bottle of 30 free with purchase of 90 at New Scotland Pharmacy, Stonewell Shopping Center, New Scotland. 439-8551. tf

**RUST-PROOFING SERVICE**

We have rust-proofed cars and trucks since 1960 for the Telephone Co. (Eastern Division), using a system developed by their engineers to prevent rust damage to their vehicles.

Let us protect your car or truck using this same proven method.

CALL MICHAELS for Appointment  
HO 3-2775

**FURNITURE**

Our low-cost operation policy enables us to bring you **BIG SAVINGS** on **NEW** furniture, rugs, bedding, drapes.

**BURRICK FURNITURE**  
560 Delaware Ave., Albany  
Just across the Thruway Bridge in Albany

**EARLY AMERICAN** items in solid pine hand crafted. Tables, spice shelves, chests, cobblers' benches, dry sinks. ST 5-0643. 4t1116

**GIVE UP** climbing ladders to change your old storms and screens and have **TAYLOR** install the best Aluminum Combination windows. \$17 each. Call evenings. 765-2856. tf

**DAVENPORT**, brown, pair Duncan phyfe end tables, set of 6 Iroquois china brown and blue. 439-3727.

**TAKE** soil away the Blue Lustre way from carpets and upholstery. Rent electric shampooer \$1. Adams Hardware, 380 Delaware Avenue, Delmar.

**ROUND 38"** coffee table, 2 end tables, TV, Zenith 23", black and white; credenza. Phone IV 2-6745 evenings-weekends.

**GOULD** shallow well pump, excellent condition, \$40. After 6 P.M. RO 7-2775.

**TUXEDO**, size 40, worn twice, \$45; portable typewriter, \$45. HE 9-1690.

**ELECTRIC** radiator heater. Call 439-1505.

**TRUMPET**, Ambassador, like new, including case. Evenings, IV 2-6419.

**BOY'S 26"** bicycle, Schwinn Jaguar model, excellent condition. Evenings. IV 2-6419.

**WING-BACK** chair, brown silk brocade, excellent condition. Evenings. IV 2-6419.

**FM TUNER**, H.H. Scott, wideband type LT10, make offer. Call HO 3-8516 after 5 P.M.

**RUMMAGE SALE**, Saturday, November 4, from 10 A.M. to 3 P.M. at the First Unitarian Church of Albany, Washington and Robin Streets.

**GARAGE: Gigantic Shed Sale** - Inside, Sunday, November 5th, 12-5 P.M. Restaurant Equipment.

**SPARE TIME?**

Stenogs & Typists No Fee. Temporary Assignments Available. Phone 463-4195

**MANPOWER INC.**

**REICH STENOGRAPHIC PORTRAITURE CHILD ADULT**

154 Lenwood Ave. Westmere studio appointment 439-2058

10% discount on **CHRISTMAS** photos & all **FAMILY GROUPS** if arranged now.

©VOLVO-SCANDIA OF AMERICA, INC.

**We fix the same car every day.**

If you want to do something right you can't have a lot on your mind.

We only have Volkswagen on our mind.

Our mechanics have gone to Volkswagen schools, our shelves are filled with Volkswagen parts, and our tools are especially made to fix Volkswagens.

So when something goes wrong with your Volkswagen, why take it to other people who fix other cars?

Bring it to us.

If we've fixed it once, we've fixed it a thousand times.



5 MINUTES FROM TROY

**COOLEY MOTORS CORP.**

SALES—SERVICE—PARTS

U. S. ROUTE 4

TROY-DEFREESTVILLE ROAD



AUTHORIZED DEALER

**Service Wed. Eves. By App't.**

PHONE 283-2902

**THE SPOTLIGHT**

8-Hole Freezer, gas stove, dishes, glassware, folding chairs, antiques, household items, mirror, head boards, water heater, portable bar, many other items. The Center Inn, Rt. 9W, Glenmont.

**YARD SALE** - Antiques galore, 30" range, good; Anderson picture window, 43 x 82, new, miscellaneous, November 4, 5, 11, 12. Spore Road, Unionville.

**FOR** better cleaning, to keep colors gleaming, use Blue Lustre carpet cleaner. Rent electric shampooer \$1. Hilchie's Hardware, 235 Delaware Ave., Delmar.

**SNOW** tires, mounted, (2) 6-50 x 13, excellent condition, \$30. HE 9-5088.

**HOME** made quilts and rugs. Phone 869-6929.

**TIRES** and wheels, 7-50 x 14, good condition, \$15 pair. HE 9-5153.

**SKIS**, 6 ft. 3" with safety bindings; size 7 Brownie uniform, boy's size 4 and girls size 3, ice skates, portable ironer. 439-4696.

**HAMBURG**, WITH THAT GOOD STEAK TASTE 89¢ per lb. - specially priced at 79¢ per lb. on orders 20 lbs. or over. Packaged and frozen in 1 lb., 1 1/2 lb., and 2 lbs. for your convenience. The Old Fashioned Meat Market, 65 Delaware Ave., Elsmere. HE 9-2250.

**PING PONG** table, separate top, \$25; 10-gal. complete Aquarium heater, lite, filter, cost \$45, will sell \$25; cocktail table, walnut Danish. 439-5496.

**USED TV**, 23" floor model, \$50; new baby's dressing table, \$13. 439-1533.

**DOT'S BARGINS GALORE!** Next-to-new family clothing. Discount prices. National Brands boots, sneakers. New selection of Peterson and Gem baby furniture. Lay-away accounts available. 241 Delaware Ave., Elsmere. 2t119

**ANNUAL ANTIQUE SHOW AND SALE** - Rafael's Restaurant, Route 9, Latham, N.Y. Noon to 8 P.M., Sunday, November 5. Space available. Contact James S. Mellen, 129 Summer St., Somerville, 43, Mass. Telephone 825-0257.

**TABLE** with cutlery drawer, 4 chairs, off white, chrome legs, \$20. 439-2801.

**MOVING** - Furniture, mobile dishwasher, tools, golf clubs, ski equipment, 8 Flint Drive. 439-5283.

**CUSHMAN** maple double bed, double dresser with mirror, bedside table, \$100. 439-6837.

**2 SETS** Jealously doors, Aluminum for breeze-way, closer, \$200. HE 9-4337.

**ATTENTION:** newly refurbished turn of the century "Run about" excellent for display, make reasonable offer. HE 9-4082.

**TELEVISION**, 17" Philco portable, good working condition, \$40. 439-6103.

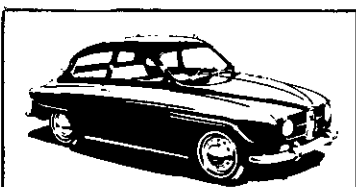
**LEAVING** the area sale - bedroom, living room, kitchen furniture.

**Delmar's Leading Real Estate Broker**  
Wm. B. **PAGANO** INC.  
Our 47th Year  
264 Delaware Ave., Delmar  
439-9921  
Multiple Listing Service

Lawnboy, picnic table, miscellaneous, November 4, 10 to 5. 64 Cherry Avenue. 439-9263.  
**BLUE Spruce** and other evergreens for fall planting. Nelson Nursery, 32 Bender Lane, Elsmere. Weekends only. 439-1069. 3t1116

**2 STUDIO BEDS** - 10 gal. Aquarium complete - 2 Goodyear VW Bus snowtires. 439-4440.

**AUTOMOTIVE FOR SALE**



Saab Authorized Dealer  
**NEW SALEM GARAGE**  
New Salem Route 85  
DeWitt and Fred Carl  
- NEW AND USED CARS -  
Telephone RO 5-2702

**1961** Mercury 2-door, \$250. Call after 6 P.M. HE 9-4775.

**1964** Tempest, convertible, automatic, radio, heater, excellent condition, reasonable. Call A.M. or after 6 P.M. 439-2107.

**1964** Oldsmobile F85, automatic, mounted snow tires, many extras. RO 5-4092.

**1965** Honda with helmet. Must sell, sacrifice, no storage, make offer. 439-3410.

**1963** Thunderbird, light blue, 2-door hard top, radio, heater, power steering, automatic transmission, \$1,545. PO 8-2094.

**1963** Corvair Spider convertible, 4 on-the-floor, black with white top, red bucket seats, \$730. HE 9-3232 after 6 or weekends.

**PETS**

**"DOGS BY DONNA"** professional grooming. Home pick-up - delivery. HE 6-1035 or HO 5-3601.

**POODLES**, AKC, males, 3 months old Nov. 3rd. HE 4-0638.

**PART** angora kittens, free, 6 weeks old, housebroken. 439-4874.

Subscribe to The Spotlight

We are known . . .  
By our good Listings  
PHILIP E. **ROBERTS**  
INCORPORATED  
1525 WESTERN AVENUE  
ALBANY, NEW YORK 12203  
REALTORS 489-3211

**WANTED TO RENT**

**TWO-BEDROOM** apartment or house, 1 child, December 1st. 439-5712.

**HELP WANTED**

**AVON** calling for Xmas - opening in Delmar. Mrs. Calisto. ST 5-9857. 2t112

**WOMAN** for general office work 5 days, 35-hour week. Apply in person to Bob Jackson, Delmar Lumber, 340 Delaware Ave., Delmar. 3t112

**STATION** attendant, part time, including weekends. Ken Smith. 439-6344.

**PART** time custodian - Saturdays, plus some week day, responsibility. Delmar Presbyterian Church. Call 439-3473 after 6 P.M.

**HOUSEWIVES**, part time or full time, days or evenings, employee discounts, excellent conditions. Apply Stewarts Ice Cream Store, 300 Delaware Ave., Delmar.

**SITUATIONS WANTED**

**HUSKY** highschooler available. Rake leaves, hang storm windows, etc. 439-1517.

**IRONING** done in my home. Please call HE 9-9436.

**IRONING** done in my home. Near Indian Ladder Drive-in. 765-2145.

In order to simplify our book-keeping, Spotlight Classifieds must be paid for in advance of publication.

**TURNER VACUUM SERVICE**



261 DELAWARE AVE., DELMAR  
TELEPHONE: HE 9-1210  
PARTS - SALES - SERVICE

Open Tues.-Fri. 2 to 9 P.M.  
Mon. & Sat. 9 to 5 P.M.

*Samflow Lamp Hospital*

Lamp Mounting  
Repairing & Rewiring  
GLASS  
Ground and Polished

190 Western Avenue  
(between Quail & Lake)  
Call 463-1081 Albany  
Hours: Tues. thru Sat.  
12 Noon till 6 P.M.

**YOU'LL SAVE ON**



- See our complete 1968 line
- All makes, models, colors, styles
- It's easy to own a 1968 Hallman Chevrolet
- You're probably driving the down payment
- Get the money-saving facts from the leader

WE LEASE ANY MAKE CAR OR TRUCK FOR LESS!

**MARSH HALLMAN CHEVROLET, Inc.**  
781 CENTRAL AVE. 489-5551  
Open Daily 'Til 9 P. M. Friday-Saturday 'Til 6 P. M.  
**Where More People Buy For Less!**



Delaware Plaza, Delmar  
Shop Downtown Albany!

# JUST ARRIVED

Imported From Italy

HAND TAILORED . . . .

## TOPCOATS and OVERCOATS

LUXURIOUS CASHMERE BLENDS . . . .  
TWEEDS, CHEVIOTS, SAXONIES . . .

**\$69** Comparable at \$100

Imported From Italy

HAND TAILORED . . . .

## SLACKS

FINE WORSTEDS IN NEWEST FALL SHADES . . . .

**\$18** Comparable at \$30

Imported From Italy

FULL FASHIONED

## KNIT SHIRTS

NEWEST FASHION MODELS  
LATEST KNIT DESIGNS

**\$14** Comparable at \$20

Shop Downtown Albany: Daily 10 A.M. till 5:30 P.M. Thur: 10 A.M. till 9 P.M.

Shop Delaware Plaza: Daily 12 Noon till 9 P.M. Sat: 10 A.M. till 9 P.M.



Use Steeffel's Charge Accounts



# The Longest Drink in Town

**4-FOOT TALL  
CAMMELLINO CHIANTI**

GALLON: 45 inches High **\$9.52**

QUART: 20 inches High **\$2.79**

## ELSMERE WINE & LIQUORS

222 DELAWARE AVE., DELMAR  
Phone 439-9229 FREE DELIVERY  
Open Daily 9 a.m. "As near as your phone"

### STOP IN TO SEE OUR LOVELY COLLECTION OF THE OUTSTANDING NAME BRAND MILLINERY!

Mr. John Jr.	Emme
Christian Dior	Everitt Casuals
Miss Sally Victor	Mink Hat - Whimseys

Hazel Bishop Human Hair Wigs **\$49.95** Wiglets **\$19.95**

Also Leather Handbags	Feather Moc Slippers
St. Thomas Wallets	Mojud Hosiery
Vera Scarves	Costume Jewelry

While Here Say "Hello" To Your Friend and Mine  
"Lucia Colwell" (Now at Anne's)

STORE HOURS: Daily 10-5:30; Fri. 'til 9 P.M.



## Anne's Hat Box

Anne McGoey, 406 Kenwood Ave., Delmar

Permit No. 10  
**PAID**  
U. S. POSTAGE  
Bulk Rate

