



Christmas Greetings

In the peace and quiet of this snow-laden countryside, the air is atingle with the crisp freshness of winter, and we see the familiar signs and symbols of the good old-fashioned Christmas spirit . . . a spirit ever new. For you and yours, we wish a bounty of traditional pleasures, of serenity and contentment. At Christmastide, we pause in warmest appreciation of your continued loyalty, trust and confidence to wish you the very best of the season.

The ***Spotlight***

CONTROLLED CIRCULATION PUBLICATION

DECEMBER 19, 1968 VOL. XIII, NO. 51

\$2.00 PER YEAR

\$.10 per copy

Many Thanks . . .

Your patronage for this last year has been most appreciated. May I take this opportunity to wish you all a Merry Christmas and a Healthy and Prosperous New Year.

Douglas J. Marone

19 Delaware Plaza
Delmar, New York

The Spotlight uses many pictures. If you take newsworthy pictures, send them to: The Spotlight, 154 Delaware Ave., Delmar. Be sure to request "photo credit," if you'd like to be identified as the photographer.



Greetings

with every good
wish for a beautiful

Christmas! And may we express our sincere joy
in serving you. Your patronage is appreciated.

PAULINE'S Style Centre

412 Kenwood Avenue
Delmar, New York

PAULINE CARLEY
Phone: HE 9-1217

Lighting Contest

If you are planning to enter the Bethlehem Chamber of Commerce lighting contest, please mail in your postcard with name and address to Post Office Box 133, Delmar. Final judging will take place Monday, December 23, from 6:30 to 9 P.M.

The prizes are offered in the following categories:

1. One prize for a religious display of \$25, to be given to the church of the winner's choice.
2. A first, second and third prize for other residential lighting displays, offering \$25, \$15, and \$10 prizes.
3. Plaques to be awarded to the three best commercial displays in the Tri-Village area.

THE SPOTLIGHT is published every Thursday by Spotlight, Inc., 154 Delaware Ave., Delmar, N.Y., ROBERT G. KING, PUBLISHER. (Controlled Circulation Postage Paid at Delmar, N.Y.) Deadline for news is Thursday afternoon, one week preceding publication; deadline for display advertisements is Friday afternoon.

\$10 Million For Sewer

A proposed \$10.1 million extension to the Delmar-Elsmere Sewer District will be discussed at a public hearing at 7:30 P.M. January 8 in the Bethlehem Central Senior High School auditorium.

Merwyn Atwood, executive secretary of the Delmar-Elsmere Sewer District, disclosed final plans and cost data on the proposed 11-square-mile sewer extension.

The project, which would include a new secondary processing treatment plant on the Hudson River near its confluence with the Vlomankill, will serve an additional 5,000 residents in the Town of Bethlehem.

According to Mr. Atwood, \$7,059,800 of the cost would be raised through a 40-year bond issue. The total first year cost, including principal and interest payments on the bond issue, administration, operation and maintenance is estimated at \$588,100.

Those residing in the present

WHY RENT?
WHEN YOU CAN
PURCHASE THIS
GREAT SKI PACKAGE
FOR ONLY

\$44⁹⁵
INCLUDES
BINDING
INSTALLATION

- WOOD SKIS POLY BASE
- SKI FREE BINDINGS
- ALUMINUM POLES • SKI TIES
- RUNAWAY STRAPS

Bennett's
SPORTING GOODS

581 Delaware Ave. (near Cherry Ave.)
Delmar - 439-1862

sewer district will share \$2,280,000 of the cost. The remaining \$7,838,000 will be shared by those living in the proposed extension area.

During the first year of ser-

439-4984 *

That's the telephone number to call (anytime between 8 A.M. and 4 P.M.) if you need

- a little help with your holiday party
 - some housecleaning before Christmas
 - babysitting for your children
 - ironing of any kind
 - care for your animal pets while you are away
 - shovelling your driveway
 - heavy indoor or outdoor cleaning
 - help with putting up your Christmas decorations
- * You will speak with the Bethlehem Central Junior High employment agency, Junior Jobs.

vice, owners of property in the proposed extension area and having access to a public sewer would pay a tax rate of \$7.14 per \$1,000 of assessed valuation, plus \$1.01 per foot of road frontage and a water rent surcharge of about \$34.70 per family, which would vary depending upon water use.

Property owners in the proposed extension area who will not have access to a public sewer will pay an additional \$2.38 per \$1,000

Residents in the current Delmar-Elsmere Sewer District will pay an additional \$4.90 per \$1,000 assessed valuation. All tax charges will decrease after the first year.

Under the State Pure Waters Program, a grant of 60 per cent of the construction cost of certain major sewers, pumping stations and the treatment plant will be received by the town. Aid in the amount of \$3,058,000 is guaranteed and has been considered in computing estimated annual costs to property owners.

The extension would encompass the areas of Slingerlands.

Discover the 2nd Village Shop

Here's how you shop at the 2nd Village Shop, at the 4 Corners.

First: you park — in the lot in front of the store, or in the lot behind the store.

Second: you browse, looking at the Early American furniture and gifts. You take your time; sit in a sofa, turn on a lamp, move a picture. The atmosphere is quiet, home-like. Most of the arrangements are color-coordinated. A customer once described our merchandise as: "Colonial — without Corn."

Third: if you select a chair or a sofa, we deliver promptly. Gift items are wrapped, no charge.

There is no selling pressure. In fact, if you've finished your Christmas shopping, and you want to come in and just sit for a while; come in — we'll leave you alone.

THE 2nd *Village Shop*

4 Corners
Delmar

CHRISTMAS HOURS:
Open Evenings —
Monday thru Friday

Russell Stover CANDIES



ASSORTED CHOCOLATES

1 lb. \$1.85 2 lbs. \$3.60 3 lbs. \$5.40 5 lbs. \$8.75



THE GIFT BOX ... chocolates and butter bons
1½ lbs. \$2.75 2¼ lbs. \$4.00



LITTLE AMBASSADORS

...finest miniature chocolates

1 lb. \$2.40 2 lbs. \$4.75



256 Delaware Avenue,
Elsmere, New York

Phone 439-9356
(Never a Busy Signal)



**82 STATE ST.,
DOWNTOWN
ALBANY**

**OPEN DAILY
TILL 9 P.M.
SATURDAY till 6 P.M.**

**THE MOST IMPORTANT
DECISION IN OUR HISTORY
ENTIRE STOCK MUST BE SOLD
NOTHING RESERVED
NOTHING WITHHELD
HURRY... HURRY**

GOING OUT OF BUSINESS

THIS IS THE MOST DRAMATIC SALES EVENT EVER IN OUR HISTORY. AFTER SERVING THE PEOPLE OF THE CAPITAL DISTRICT WITH QUALITY MEN'S WEAR FROM ALL PARTS OF THE WORLD, WE HAVE DECIDED TO CLOSE OUR DOORS FOREVER, DUE TO CIRCUMSTANCES BEYOND OUR CONTROL. NOW AT THE HEIGHT OF THE FALL SEASON WE ARE FORCED TO DISPOSE OF OUR ENTIRE INVENTORY OF FINE QUALITY MEN'S CLOTHING AND FURNISHINGS AT PRICES REDUCED FAR BELOW YOUR EXPECTATIONS. NEVER BEFORE, MAYBE NEVER AGAIN WILL YOU HAVE SUCH AN OPPORTUNITY TO PARTICIPATE IN A SALES EVENT OF SUCH GREAT MAGNITUDE. COME EARLY WHILE SELECTIONS ARE COMPLETE...

*Entire Stock
Reduced UP TO*
68% AND MORE

USE YOUR
CHARGE



SELECT GROUP—MEN'S SUITS & COATS

ALL WOOL WORSTEDS—SHARKSKINS—
CHEVIOIS—SAXONIES—NEWEST
MODELS INCLUDING TRADITIONAL
VESTED MODELS—ALL SIZES

VALUES TO \$95.00

\$33-\$44

100% CASHMERE COATS Reg. \$59.00
\$115.



SELECT GROUP NEW FALL—MEN'S SPORTCOATS

Reg. to \$49.50

\$18-\$24



SELECT GROUP—MEN'S DRESS SLACKS

Reg. to \$17.95

\$6.90-\$9.90



SELECT GROUP ZIP OUT LINED RAINCOATS

Reg. to \$45.00

\$12.90-\$22.90



SELECT GROUP—MEN'S SWEATERS

Reg. to \$15.95

\$5.99-\$8.99

SELECT GROUP DRESS SHIRTS

PERMANENT PRESS

Reg. \$4.50 each

2 for \$5

SELECT GROUP SPORT SHIRTS

PERMANENT PRESS

Reg. to \$5.95

\$2.99

SELECT GROUP KNIT SHIRTS

Reg. to \$5.95

\$2.99

FELT HATS

YOUR CHOICE
OUR ENTIRE STOCK

\$8.90

SELECT GROUP PAJAMAS

Reg. to \$5.00

\$2.99

CHOICE OF
THE HOUSE

HOSE

Reg. \$1.50

75¢ pr.

TREMENDOUS
SELECTION

TIES

Reg. \$2.50

\$1.25

CHOICE OF
THE HOUSE

BELTS

Reg. \$5.00

\$1.88

JEWELRY 1/2 OFF WALLETS

UMBRELLAS

MEN'S FINE
QUALITY

Reg. \$5.95 **\$2.95**



SELECT GROUP—MEN'S STYLED OUTERWEAR JACKETS

Reg. to \$25.

\$8.90-\$12.90

All Goods Subject to Prior Sale

**82 STATE
steeffels DOWNTOWN
ALBANY**

MUFFLERS

Reg. 3.50

\$1.75

"NEMRU" DRESS SHIRTS

Reg. \$7.95

\$2.50

SELECT GROUP WOOL HATS

Reg. \$5.95

\$1.88

Hurry—Hurry—Don't Miss It!

**OPEN DAILY
TILL 9 P.M.
SATURDAY TILL 6 P.M.**

Hamagrael, Bethlehem Center, Glenmont, and Selkirk, and would form a basic collection network which would be capable of ultimately serving all the areas of the town.

The sewage from the abandoned Delmar - Elsmere Sewer District treatment plant would be pumped into this new collection system and treated at the new plant.

Residents will connect to the new system at their property line at their own expense. According to Mr. Atwood, an estimate of this cost is impractical because of varying conditions affecting each installation.

The town initiated planning on the sewer extension and treatment plant three years ago after the State Department of Health ordered the Delmar - Elsmere Sewer District to abate pollution from the district's sewage treatment plant. According to Mr. Atwood, the district must either provide secondary treatment facilities at its existing plant or join with other areas in constructing and using a joint treatment plant.

He pointed out that the latter solution is the most practical from both engineering and financial aspects.

Visit Hospital

On December 4, the members of the Shorthand II and Transcription Class at Bethlehem Central Senior High School visited Memorial Hospital and toured the office areas of the Medical Records and X-ray Departments.

Lynnard W. Herrington, Executive Director of the Hospital (whose daughter is a member of the class), arranged the tour for the group taught by Mrs. Margaret H. Westervelt. Mrs. Nancy Dawes, Public Relations Director, arranged the tour. Mrs. Albertine Randles, Medical Records Librarian, explained the work of keeping complete and accurate patient records. She and her staff demonstrated the use of dictating equipment, while Miss Elaine Borecki, Secretary to the Pathologist, while Miss Elaine Borecki, Secretary to the Pathologist, and Miss

CHRISTMAS TREES

with **FREE** *Kling* reg. U.S. Pat. Off.

YEP!! Every one of our trees has **FREE KLING**, the patented process that **GUARANTEES NO NEEDLE FALL** and they **WON'T BURN!!**

Ours are nursery-grown Scotch Pine and Balsam Trees that were personally selected from a stand of 4,000 acres. **EVERY tree is PERFECT!!**

When it was shipped to us, it was delicately handled, individually wrapped and delivered just as it was before cutting.

YOU'LL WANT TO SEE THESE BEAUTIES - - -
Priced from \$3.25



**Laurel Roping
Fruit Garlands
2"-4" Ribbon
Tree Stands
Pine Roping
WREATHS**

Each of our trees is displayed individually and upright.

...

We feature the stand-strait Christmas tree holder that holds your tree erect and true automatically. Ask to see this innovation in Christmas tree stands.



**Take the
Chill off . . .**

**FREE COFFEE AND
FRESH DONUTS**
EVERY day till Christmas!
(For Mom & Dad, of course)



SANTA'S HERE

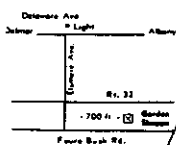
Thurs., Dec. 19 - 6-8 P.M.
Fri., Dec. 20 - 6-8 P.M.

FREE
Santa Gifts for
The Children

Note to Mom & Dad:
Bring the family
Camera - take
all the pictures
you want!!!



Hours: Thurs., Dec. 19;
Fri., Dec. 20; Sat., Dec.
21; Mon., Dec. 23: OPEN
8 A.M. to 8 P.M. Sun.,
Dec. 22: 10 A.M. to 5
P.M.



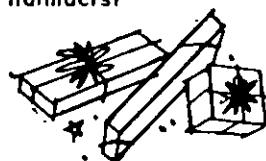
THE Garden Shoppe

FEURA BUSH ROAD
GLENMONT, NEW YORK
Phone 439-1835

Christmas Suggestions at ELSMERE PHARMACY, Inc.

Next to Albany Public Market
Sol Levine, B.S., Reg. Pharmacist

for Men -



FABERGE
BRUT
CANOE
ENGLISH LEATHER
OLD SPICE

YARDLEY
KING'S MEN, etc.
WALLETS
PIPES
JADE EAST



for Women -

LANVIN
CHANEL
DANA
FABERGE
TIMEX

CHANTILLY
MATCHABELLI
REVLON
JEAN NATE
COTY, etc.

WALLETS

FINE ASSORTMENT
XMAS WRAPPINGS - CANDY
CARDS - STATIONERY

Fresh Candies

by **BARTON'S®**
bonbonniere
continental chocolates
NEW YORK • LUGANO, SWITZERLAND

Diane Corbett, Secretary to the X-ray Department, gave the girls information about the actual work they do.

Those who made the trip were: Laurie Booth, Susan Dopp, Kim Fendrick, Barbara Fryer, Kathleen Furey, Jean Ginter, Margaret Hasselwander, Victoria Heinrichs, Marcy Hendrick, Kathy Herrington, Catherine Miller, Christine Morrow, Donna Myers, Nancy Odell, Lucille Osterhout, Mary Pike, Sheila Sagor, and Donna Smith.

Holiday Help

The Future Business Leaders Chapter at Bethlehem Central is continuing its community project this year by preparing a Christmas basket to be delivered in time to help some family celebrate the holiday more adequately.

Terry Kinns, Chapter President, has appointed Kitty Jacobson chairman of this project. Blanche Hathaway will serve as her co-chairman.

Each member is contributing money to be used to purchase a turkey and each girl is also bringing food and gifts for the children. Mrs. Mary Elliott, Chapter Advisor, is working with the girls in their planning of this project.

Concert

The Christmas Concert of the Bethlehem Central Senior High School is set for Thursday (to-

night), December 19, at 8 P.M. in the Senior High auditorium. Both choral and instrumental music will be featured.

The program will open with the Senior High Concert Band, under the direction of Samuel Bozzella, performing "Polanaise" from the "Christmas Night" opera by Rimsky Korsakoff. This selection will be followed by Newell Lang's narrated arrangement of "Twas the Night Before Christmas."

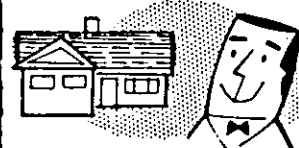
The Choraliers, under the direction of Mrs. Magdalene York, will present an original presentation of familiar Christmas music with drama and dance. The Swing Choir and Madrigals will assist the Choraliers in this dramatic production.

The string performers will make their first appearance as a chamber orchestra, under the direction of Salvatore Gangi. The Chamber Orchestra will present "Chorale Fugue" by J. S. Bach, followed by "Bastien and Bastienne Overture" by W. A. Mozart.

The Concert Choir, directed by Mrs. York will sing "Cheru-

Check New Low Rates

HOMEOWNERS "PACKAGE" INSURANCE



All the protection you need for your home is in this one low cost Nationwide plan. Ask for the Homeowners Policy—for convenience . . . and for real savings (as much as 40% over separate coverages, depending on where you live).

THEODORE H. WERE

616 Delaware Avenue
Albany 9, New York
HObart 5-8937

NATIONWIDE
MUTUAL FIRE INSURANCE COMPANY
Home Office: Columbus, Ohio

*Christmas
Greetings*

AND BEST WISHES
for the
New Year



L. C. SMITH

Bus Service, Inc.

bie Hymn" by Gretchaninoff and Pegolesi's "Glory to God in the Highest."

The program finale features the Concert Choir and Chamber Orchestra presenting "The Christmas Cantata" by Tibor Serly. The finale also includes participation of the audience singing in a "quodiblet" style.

The public is cordially invited.

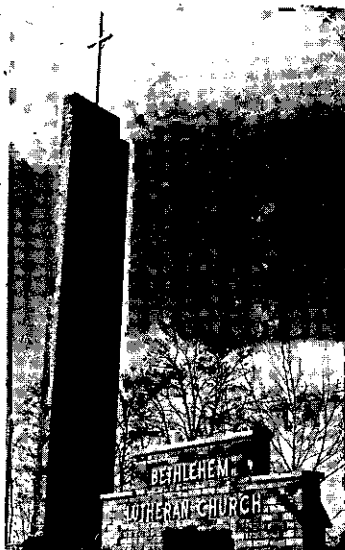
LETTERS

Dear Sir:

Will you, please, help us find our daughter? My wife, Ruth, and I are directing this plea to you and to the million other newspaper, in the cities, towns, and hamlets of this country.

Our daughter, Elizabeth Lurene (Liz) Earnstein, was just two months short of her fifteenth birthday when she vanished without a trace last March 18.

She was last seen walking home from school along a lonely tree-lined street amid the orange groves of suburban Redlands in



BETHLEHEM LUTHERAN CHURCH

85 Elm Avenue, Delmar
439-6217

Greetings

The Members of our Church wish all Residents of the area a "Truly Blessed Christmas and Confident New Year."

Our **Thanks** to all public officials and all Civic organizations for maintaining a community in which we are proud to live and function as a church.

TWO CHRISTMAS EVE SERVICES

6:30 A.M. — 1st Candlelight-Carol Service
(Nursery)

8:00 P.M. — 2nd Candlelight-Carol Service
(Nursery)

Note: Be a **Participant** not just a spectator at our services. Join our Candlelight Procession. Travel from Nazareth to Bethlehem just as Mary and Joseph did — by means of "A Triptik to Bethlehem."

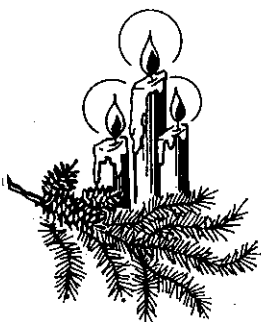
FRANK G. COBURN, INC.

283 WASHINGTON AVENUE

ALBANY, NEW YORK 12206

INSURANCE - SURETY BONDS

PHONE 463-4277



FRANK G. COBURN, JR.
President

WILLIAM A. SEIFERT, JR.
Vice President



Clothes for the guy who hates to cover them up.

When you go out of your way to choose a great-looking outfit, the last thing you want to do is hide it. So, Cricketeer makes an outfit that'll make it a little easier for you to leave your coat at home. It's a bold wool plaid natural shoulder sportcoat, trim-fitting color-coordinated oxford weave — dura-set slacks.

CRICKETEER®

SPORT COATS from \$50.00

SLACKS from \$18.50

Paul Mitchell's
MEN'S WEAR

99 DELAWARE AVENUE
ELSMERE, N.Y.
Phone 439-3218

Convenient
Layaway



Christmas Hours:
Daily 9 to 9
Saturday to 6

California. In her arms, she carried a blue notebook and a red algebra textbook.

Since then, law enforcement agencies, family members, and friends have spent countless hours tracking down hundreds of tentative leads. But to no avail. Not one single, slender clue has brightened all our efforts. Seemingly, Liz has disappeared like a breath of air on a winter's day.

But, surely there is a simple explanation. Was she abducted? Did she run away from home? Is she dead? Or is she alive and, perhaps, in your town?

You can help us. Ruth and I are begging you to help us find an answer to our torment — to help us end the long nightmare of these past eight months.

The Lord willing, someone in your area may have seen her.

With sincere gratitude,
Norman and Ruth
Ernstein

Monday, March 18, 1968, began as an ordinary day for Elizabeth Lurene Ernstein when she left home for classes at Moore Junior High School in Redlands, California. But this Monday on the 18th of March was not to be an ordinary day.

Elizabeth's school day passed without incident. She attended her last class, then left school at 3:40 P.M. to walk home, a two-mile route through blossoming orange groves. She never arrived home. Somewhere along the lonely street, Elizabeth Ernstein vanished.

There are no clues to her whereabouts or even to what happened to the 14-year-old girl, other than a report from a Redlands businessman who was driving through the area. He thought he saw a girl resembling Elizabeth walking toward the corner of the street on which she lived.

To her parents, Norman and Ruth Ernstein, the months of uncertainty and anxiety over their missing daughter "are the deepest anguish a person can go through. It is a shock so deep you become wooden," the mother explained.

The Ernsteins are appealing nationwide for help in locating their daughter. Ernstein, a chemical engineer at Lockheed in Red-

lands, and his wife, a psychiatric social worker, have posted a \$5,000 reward for information that will solve the mystery of their daughter's disappearance. They have vowed: "We will not rest until we know."

Neither parent has rested since that first long night when their young daughter failed to come home. They have tracked miles through orange groves, fields, foothills, and canyons in and around the Redlands area. They have followed every lead, no matter how slight, in the search for Elizabeth.

"I can face the daytime better than the night," the distraught mother said. "At night I find myself saying: 'Is she safe? Is she warm? Is she fed? . . . and finally . . . is she alive?'"

When Elizabeth, nicknamed "Liz" by her friends, left for school that March morning, she had only \$.25 with her. She was dressed in a blue dress with white flowers, tennis shoes and a dark-olive corduroy coat. Around her neck she wore a small gold chain with a pendant gold and blue star. En route home, she carried a red algebra book and a blue looseleaf notebook. Neither has been found.

Elizabeth is five feet, five inches tall, weighs 105 pounds and has brown hair and brown eyes.

She is one of five Ernstein children. The family lost one of these, a son, to polio in 1952.

"This, the second tragedy in our lives, is even greater because of the uncertainty," the desperate father said in his appeal to end the nightmare. "I can accept anything, even the worst, which I'm resigned to, but I must know."

Any information concerning young Liz Ernstein should be reported promptly to this newspaper or to Capt. Charles Callahan, San Bernardino County Sheriff's Office, San Bernardino, California, phone (714) 889-0111.

Dear Sir:

Please publish this letter and also the enclosed 1968 November 13 letter from the Albany County School Boards Association to The Albany County Legislature so that your readers will have a more complete understanding of our Association's request for the use of a portion of Albany County sales tax receipts to support our public schools.

Our Association made the request in a search for a broader and more equitable base of financial support for all public schools in our county in order to provide tax relief for the real property taxpayer and, also, to



May Your Christmas
Be Truly Merry!

VET'S Body Shop & GARAGE

"Complete Care For Your Car"
333 Delaware Ave.
Delmar

Happy New Year, too!

FOR
THE WOMAN
WHO CARES!

Kayser ROBES



A new mood and fabric for quilting . . . elegant and desirable Crepeset® texturized Nylon . . . in a luxurious quilt robe filled with Kodel® polyester fiberfill for warmth without weight . . . our Jonquil Spray lace frames the important collar and appliques the hidden gripper closing front . . . comfy raglan sleeves accent smart lines. Machine washable. Sizes: P-S-M-L-XL. Price: \$21.00. Colors: Blue Sky, Cherry Candy

21.00

Dorothy Lynn

360 DELAWARE AVENUE
Phone HE 9-4101

CHRISTMAS HOURS:

Open Evenings until 9

Christmas
Greetings

May your Christmas be filled with all the joy and blessings of that wondrous Holy Night in Bethlehem.



McCarrolls'
THE VILLAGE BUTCHER

279 DELAWARE AVE., DELMAR

"Makers of Old Fashioned Barrel Cured

Corned Beef"



Decorated with Hearty "Thank You's"...
You're the frosting on our cake . . . and doing
business with you is a real treat.
To you, wishes for a Christmas full of goodies.

DELMAR BAKERY

Four Corners, Delmar

HE 9-1211

help provide necessary growth in school revenues.

As seen in the enclosed letter, county sales tax receipts have been used to support public education in four New York State counties and are being sought for this purpose in other counties of our State. Erie and Monroe Counties, in which the respective cities of Buffalo and Rochester are located, have been, since 1947 and 1952 respectively, providing significant financial aid to their public schools by using county-wide sales tax.

Our request to The Albany

County Legislature, in the form of said 1968 November 13 letter, has been "filed" without any consideration by The County Legislature. We would hope that our request will be retrieved from the files and given full consideration by the entire Legislature. A copy of our November 13 letter is being sent to each Legislator.

We were pleased to note, according to a newspaper report of Mayor Corning's comments about Albany City's proposed 1969 budget, that the 1969 real property tax rate for the

Merry Christmas, Dr. Browne!

At Christmas time, the many patients and friends of Doctor Harold R. Browne salute him!

We all hope he will be out of the hospital soon and again resume his important place in the lives of so many of us in this, our Town of Bethlehem.

Merry Christmas, Dr. Browne, and many happy New Years from all your friends.

MODEL GJ-725
 23" DIAGONAL,
 295 sq. in. rectangular picture
 Cabinet:
 H-30-7/8", W-36-1/4",
 D-22-3/4"

The Fairhaven offers handsome all-wood Contemporary furniture at a budget-wise cost.

Cabinet of selected hardwood solids with veneers

- Super-powerful New Vista VHF tuner
- Ultra-sensitive Solid State UHF tuner
- Automatic chroma control
- RCA automatic color purifier
- One-set VHF fine tuning control
- Lighted tuning panels
- New Super Bright Hi-Lite Picture Tube
- Glare-proof, dust-proof picture tube
- New Vista 25,000-volt color chassis
- Automatic scene control
- Automatic stabilizer circuits
- Automatic channel equalizer

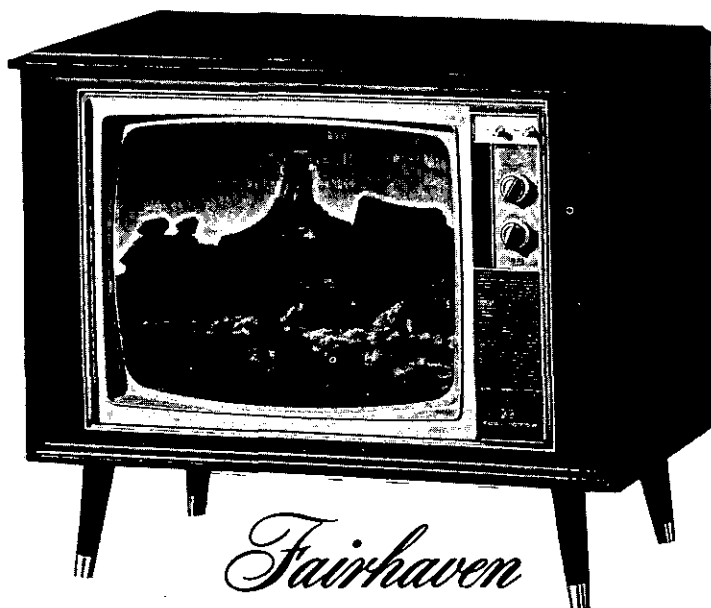
WARRANTY -
 2 yr. Picture Tube • 1 yr. Parts
 90 day Free Service

\$498

(Limited Quantity)



RCA



Fairhaven

BOB Sowers'
DELMAR APPLIANCES

239 Delaware Avenue, Delmar / 439-6723

Hours: Mon. & Tues.: 10 A.M. to 6 P.M. - Wed., Thurs. & Fri.: 10 A.M. to 9 P.M. - Sat.: 9:30 to 5 P.M.



city will not be increased because of the estimated surplus receipts from the Albany County sales tax — and this was possible even though city, county and city school expenses went up, including pay increases for city employees and school teachers. This happy situation uniquely exists in the City of Albany because some revenues of three different budgets, namely, those of Albany County, Albany City and the Albany City School District, are raised under the cover of a single city real property tax.

Unfortunately, it appears that all remaining school districts in the towns and the other cities of Albany County will not receive similar benefit from surplus county sales tax in 1969. It would be expected, however, that the real property taxpayer in Albany County outside of the City of Albany should benefit from the surplus county sales tax in 1969 by having lower town and city taxes (to partially cover town or city budgets and a portion of the county budget).

We would urge The Albany

County Legislature to utilize estimated surplus county sales tax receipts in its 1969 budget in such a way so that all taxpayers in the county — in and out of the City of Albany — receive their fair share of tax relief. We would also respectfully urge the entire Legislature to consider fully the proposal to use a portion of county sales tax to help provide a broader basis of financial support for our public

schools.

Very truly yours,
Robert K. Bair, Pres.
Albany County School
Boards Association

*The Albany County Legislature
County Courthouse
Albany, New York*

*ATTENTION: Mr. John Clyne,
County Attorney*

Gentlemen:

The school districts of Albany

County, like those throughout the state, are facing an extremely grave financial crisis. We are charged with the responsibility for providing modern, quality educational programs for a rapidly growing school population at a time when cost increases are far surpassing any growth in school revenues. Inflation has expanded our operating and building costs; the effects of the Taylor Law have opened

Visit! Our Impressive Christmas Display

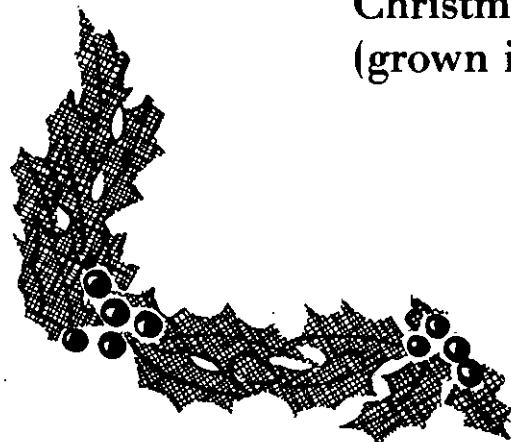
Featuring the most unique
assortment of decorations and
ornaments for Christmas

Also, an unusually fine line
of exquisite brass, copper, glass
and pottery giftware for the
discriminating taste

And as always our fine line of
distinctive and elegant
Christmas arrangements and plants
(grown in our own greenhouses)

Verstandig's
florist
Est. 1932

TEL. 439-4946 454 Delaware Ave., Delmar N.Y.



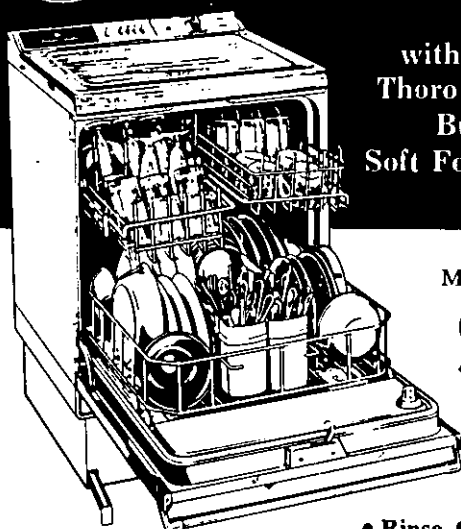
GIVE MOM MORE TIME WITH THE FAMILY WITH A DISHWASHER!

IMMEDIATE DELIVERY — NO INSTALLATION REQUIRED

5 Cycles! 2 Speeds!



Front-Loading Portable Dishwasher



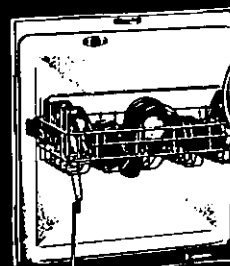
with 4-Level
Thoro-Wash and
Built-in
Soft Food Disposer

Model SF-701D

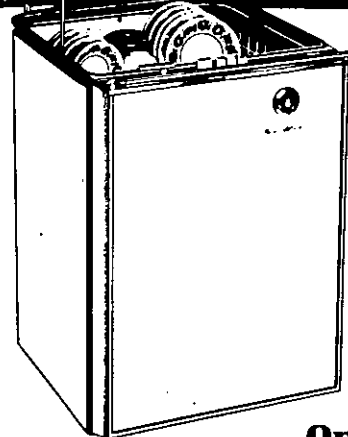
\$199

- Includes new "Mini-Wash", slow-speed "China & Crystal."
- Exclusive new Selecta-Level Racks
- Rinse-Glo automatic rinse agent dispenser.
- Exclusive Silver Shower.
- Cherry carving-board top.

No plate-scraping, no pre-rinsing



Mobile Maid® Portable Dishwasher



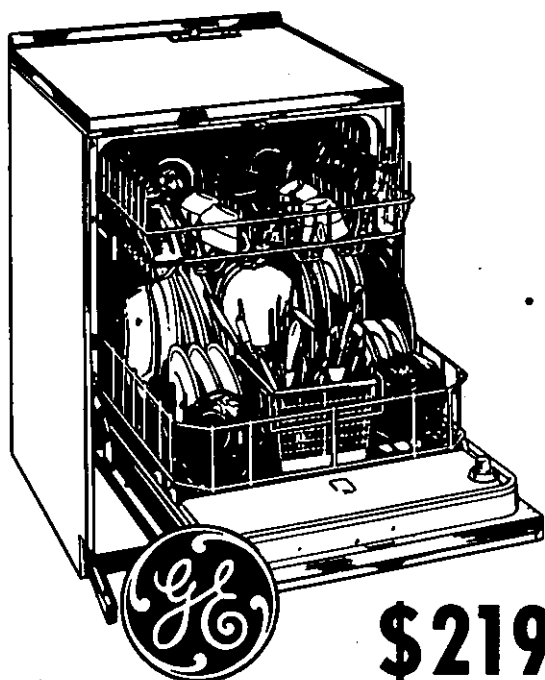
3-Level Thoro-Wash
and Soft Food Disposer
... just tilt-off large or
hard scraps.

- 3 Cycles. Daily loads, pots & pans, china & crystal.
- Spun-Gold Textolite® Top.
- Rinse Glo Rinse agent dispenser. Diamond sparkle on glassware.

Model SP-390D

Only **\$269**

3 Cycles! No plate-scraping!



3-Level Thoro-Wash and Soft
Food Disposer ... just tilt-off
large or hard food scraps.

- New Manu-Cycle Control. Normal, Short Wash, or Rinse & Dry.

- New Power-Flo Mechanism is economical, dependable, quiet.
- Exclusive retracting stabilizers.

Model SC-600D

Front-Loading Portable Dishwasher
(Converts to Built-in)

the Carriage Stop

ANOTHER
MAIN-CARE SERVICE

339 Delaware Avenue - 439-2430 - Delmar



the door to substantial increases in salary for personnel at all levels. Eighty per cent of budget increases in the school districts of Albany County for the 1968-69 school year were for salary and employee benefits after each school district, under the law, negotiated with employees.

Meeting the cost increases mentioned above and providing for increased enrollment have led to tremendous increases in area school taxes. For example, the school tax in South Colonie Central School District in 1951 was \$20.63 per thousand assessed valuation; in 1968, the rate is \$81.29 per thousand assessed valuation. By comparison, the town and county rates of \$26.86 in 1951 have increased to \$38.12 in 1968. School tax rate increases have met with gradually stiffening taxpayer resistance, as evidenced by recently defeated referendums to increase tax limits in the cities of Cohoes and Schenectady, and by defeated school district budgets in many area districts, several of them being in Albany County. North Colonie,

South Colonie and Bethlehem had budgets turned down last spring, and in the Capital District, we could add Averill Park in Rensselaer County and Niskayuna in Schenectady County as suffering budget defeats. Attempts to pare down defeated budgets have demonstrated that more than 90% of a school district's expenditures are either mandated by state law and the Education Commissioner's regulations or based on commitments that cannot be reduced. An example of this latter item would be salaries, salary benefits, and debt service.

Faced with the prospect of widespread budget defeats and serious damage to educational programs, the school boards of the County are seeking other sources of revenue to enable them to stabilize the real property tax rate, or at least to minimize future increases. According to all available information, the current outlook for increased State aid from the State of New York is very grim indeed.



Greetings and "Thank You..."

For a Christmas sparkling bright, fresh and merry, we extend our sincere wishes to you. We'll do our best, always, to deserve your valued good will.

King  Queen
CLEANERS

Stonewell Shopping Center - Junction Route 85 & 85A - Slingerlands

*At this Holiday time, we pause
to remember Good Friends, old and new.*

We at Main-Care think of you and are grateful for the confidence you have placed in us. We have done our best to serve you well and do hope that our service has pleased you.

We look forward to your continued patronage and hope that the happy spirit of the holiday season will remain with you all year.

Main-Care means "We Care"

Your Guarantee of Service



318 DELAWARE AVENUE

Season's Greetings

THE GARDEN SHOPPE

It may be that you can write the kind of interesting story you think Spotlight readers would enjoy. If so, send your manuscript to: The Spotlight, 154 Delaware Ave., Delmar. Be sure to enclose a stamped, self-addressed envelope if you want it returned to you, if it is not used.

The experience of Erie and Monroe Counties since 1947 and 1952 respectively has shown that a county-wide sales tax can provide significant financial aid to schools. In Erie County alone, which has a 2% sales tax rate, the amount of revenue raised for education in the quarter ending May 31, 1968, amounted to \$3,045,354. The schools of Erie County received 43.5% of the total sales tax revenue for the above-mentioned quarter. This allowed for a substantial stabilization of tax rates, both in the county and in the Buffalo City school district.

The sales tax rate in each of Monroe, Livingston, and Wayne Counties is 3% with the school districts in each county receiving 33 1/3% of the taxes collected. In each of Erie, Livingston and Wayne Counties, the sales tax aid distribution is on the basis

of the average daily attendance of public school pupils who are residents of the county; in Monroe County, it is on the basis of the enrollment of public school pupils resident in the county. In each of Livingston and Wayne Counties, the sales tax was imposed on March 1, 1968.

Based on the facts and needs outlined above, the Albany County School Boards Association hereby requests that the Albany County Legislature allocate 50% of the amount collected annually from the County sales tax to be distributed to the school districts of Albany County for the purpose of alleviating the financial burden of the real property taxpayer.

The Association understands that any financial aid received from the County would have as its sole purpose the reduction in school tax rates on real property, and will not be planned as anticipated revenue in any district budget during the time of preparation and presentation to the people.

We earnestly hope and hereby petition that the Albany County Legislature will take favorable action on our request which we feel is in the best interests of all our citizens.

Respectfully submitted,
ALBANY COUNTY
SCHOOL BOARDS
ASSOCIATION

Robert K. Blair, Pres.

Member School Districts, Albany County School Boards Association:

Albany City School District
Berne-Knox Central Schools
Bethlehem Central Schools
Cohoes City School District
Green Island Public Schools
Guilderland Central Schools
Menands School District
North Colonie Central Schools
Ravena-Coeymans-Selkirk Central Schools
South Colonie Central Schools
Voorheesville Central School

Program

On Thursday evening (tonight), December 19, the annual Christmas program will be presented at the A. W. Becker School auditorium. This year,

SKI headquarters

**COMPLETE SELECTION OF
SKI EQUIPMENT - ACCESSORIES**

**also RENTALS - Skis & Boots
Boot & Ski Trade-ins**

**Gallagher's
SKI
& Sport
Shop**

278 Delaware
Avenue

Telephone
HE 9-4851

NORTH AMERICAN
PROFESSIONAL
SKI
SHOPS
GUILD

the cast of the Operetta will be students from the four Selkirk Elementary area schools: Jericho, Feura Bush, South Bethlehem and A. W. Becker. The title of the operetta is "She Didn't Believe" and will be directed by Mr. E. Norman McGrattan and Mr. Martin Ainspan.

Also on the program will be the fifth and sixth grade elementary chorus singing a variety of Christmas songs. Curtin time is 8 P.M. The public is cordially invited.

Meeting

At the November meeting of Cub Pack 59 an exciting Space



Derby was held by the Dens. The space age racing event afforded an opportunity for the boys to race models they constructed with the help of their parents.

The evening was loud, long and exciting and all Cubs enjoyed it.



THIS IS Elizabeth Lurene (Liz) Ernstein who disappeared from her home last March 18. If you can help locate her, please contact the authorities at once. Read the letter and story starting on Page 7.

The winners were Malcolm Field, 1st place, and Bob Taglia, 2nd place.

In Glee Club

Elizabeth A. Blendell, daughter of Mrs. John Blendell of 31 Burhans Place, Elsmere, is a member of the Mount Holyoke College Glee Club which will be presenting its 44th Annual New

HAND PACKED ICE CREAM

IS BEST FROM THE

TOLL GATE

in Slingerlands

As we sing out with joy
at this holiday season, we express
our thanks to all our good
friends and customers for their loyal and
steady patronage.

MERRY CHRISTMAS

VOORHEESVILLE
Savings and Loan Association

VOORHEESVILLE, NEW YORK TELEPHONE ROCKWELL 5-2772

NEW SCOTLAND PHARMACY

Route 85 & Route 85A - Stonewell Shopping Center

24-Hour Phone Service

Phone 439-6551

Prescriptions DELIVERED

Pat & Tom Longtin, Props.

*Holiday Greetings
to All our Friends*

Open Sundays till 2 P.M.



Elizabeth Blendell

York Christmas Concert at Saint Thomas Episcopal Church in New York City on Friday, December 20, at 8:30 P.M.

Next semester the Club hopes to sing in concert with Trinity

College and M.I.T. and to present Verdi's "Requiem" with Yale and the New Haven Symphony at Yale.

These students, who represent 50 states, became members of the Glee Club by individual audition and now spend approximately four hours a week in practice, for which they receive 1/2 credit a semester.

Miss Blendell is a freshman at the college.

Dance

Sigma Kappa Delta Fraternity will present its 33rd Annual Christmas Semi-Formal Dance on December 23, at the Hibernian Hall, Quail and Elk St., Albany. There will be dancing from 9 til 1 to the music of Maurice and Earl Plus The Mark Four.

SEASONS GREETINGS

If she wears nothing
else ... she wears
cultured pearls

HARRY L. BROWN *Jeweler*

Thistle Gift Shop

363 DELAWARE AVENUE AT 4 CORNERS, DELMAR.

See Our FINE COLLECTION of
Silverware - Pewter - Stainless
Steel - Crystal Ware - Christ-
mas Cards

Excerpts

From "The Guidance News-
letter" of Bethlehem Cen-
tral Senior High School

Admissions Meeting - United
States Military Academy

The West Point Society of the Capitol District is sponsoring an information meeting on Saturday, December 21 at 10:00 A.M. at the Albany Academy, to which all interested high school juniors, sophomores and their parents are cordially invited.

The purpose of this meeting is to explain the career advantages of a West Point education and to

If I wanted
a snowblower
I'd buy ...

Ariens
at

HILCHIE'S

where I could
have it serviced.

review the admissions procedures.

A representative of the admissions department and Cadet David Gerlach, an Upperclassman at West Point, will conduct the meeting. Daniel Button, M.C., or his representative, will explain his role in the admissions process and the procedures which he uses in the 29th District.

NURSING STUDENT LOAN PROGRAM

You are eligible to apply for a Nursing Student Loan when you have been accepted for enrollment into a school of nursing as a full-time student pursuing a course of study leading to a bachelors degree, an associate degree or a diploma in nursing.

In determining the amount you may borrow, the school of nursing will take into account the degree of your financial need and the availability of money in the school's fund, granted to it by the Federal Government. However, the maximum amount which you may borrow for an academic year is \$1,000.

Loans are repayable to the school at 3% interest over a ten year period which begins one year after you have completed your course of study.

In addition, up to 50% of your loan obligation is 10% of the total amount of the loan - plus interest - for each year up through five years that you are employed in this capacity.

Obligation to repay the loan will be canceled in the event of death or permanent disability of the borrower.

Further information and loan application forms are available from schools of nursing throughout the United States.

NATIONAL SOCIETY DAUGHTERS of the AMERICAN REVOLUTION - American History Scholarship Award.

The National Society Daughters of the American Revolution has established an American History Scholarship in the amount of \$8,000, to be awarded for a four year college education, at the rate of \$2,000 per year, to a student majoring in American History.

To be eligible to apply for this

award, you must be an American Citizen, a senior (boy or girl) in the upper fifth of your class and receive the recommendation of the high school principal and a faculty committee.

With his application, each candidate must submit a letter of not more than 500 words, setting forth the reason for desiring an education in American History.

You may get an application and a complete list of rules for this scholarship from Mrs. Chamberlain in the Guidance Office. If you have further questions relative to this award, contact Mrs. Doris North of our Social Studies department, the local DAR representative.

Library Notes

The Delmar Public Library is looking very festive and gay, thanks to the Garden Group of the Delmar Progress Club. In fact, a trip to the Library is as good as a trip to a Christmas greens show, so professional and

Holiday Greetings

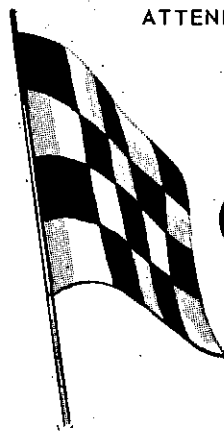
COOKIE OSTERHOUT extends an invitation for everyone to stop in at the CHECKERED FLAG during the Holiday Season ■ Enjoy your favorite drink and sandwich by our friendly fireplace

Friday, Saturday, and Sunday, Entertainment at the Piano

Delicious sandwiches - the kitchen is open until 1 A.M.

ATTEND OUR NEW YEAR'S EVE PARTY

(CLOSED ON MONDAYS)



COOKIE OSTERHOUT'S CHECKERED FLAG RESTAURANT & BAR

1886 New Scotland Road
Slingerlands, New York

Season's Greetings

The True Spirit of the Holiday Season gives us an opportunity to express our appreciation for the very pleasant association we have enjoyed with you since our opening September, 1967.

God is guiding us to Health, Happiness and Success through service to others.

Robert C. Lowers
DELMAR APPLIANCES
239 Delaware Ave.,
Delmar

artistic are the decorations. The staff is grateful, as always.

Hundreds of beautifully dressed dolls are smiling from the window ledges of the library Reference Room. The Salvation Army will soon claim them for distribution to gladden the hearts of many small girls this Yuletide.

Don't forget — children's films at 9:30 and again at 11 at the Delmar Library on December 21.

And a Happy Holiday to each and everyone of you.

Engaged

Mr. and Mrs. Marvin C. Hinkelman, 64 Rowland Avenue, Delmar, have announced the engagement of their daughter, Jean Grey Hinkelman, to Bruce F. Smith, son of Mr. and Mrs. Donald E. Smith of New Hartford.



Jean Hinkelman

Miss Hinkelman is currently enrolled in the Graduate School of Education at Cornell University and is employed by the Dean of Students Staff as a Graduate Councilor. A graduate of Bethlehem Central High School, she received her BA degree in June from the College of Arts and Sciences, Cornell University. She is completing a semester of teaching at the Ithaca High School and will receive her Masters of Arts in teaching degree in June. She is a member of Pi Beta Phi.

Mr. Smith is completing his last year at Cornell Law School, and is an Editor of the Cornell Law Review. He is a graduate of New Hartford High School and the College of Arts and Sciences, Cornell University, Class of 1966.

Mobile Nativity

The youth of the First Methodist Church of Delmar will present a live Nativity Scene on December 21 and 22 from 6 to 9 P.M.

This year, a new twist has been added: through the courtesy of

cation so that they may be better able to teach those children who come to their classrooms with Montessori training.

Appointed

Eric H. Boyer has been appointed manager of the Glenmont Liquor Store, Corner of 9-W and the Feura Bush Road.

Mr. Boyer was the Maitre d' Hotel of the Sheraton-Ten Eyck Hotel in Albany. He came to Albany from Hamburg, Germany, in 1936 to join his cousin in the State Street restaurant. Remaining in the food and beverage field, he managed the Huyler's restaurant for sixteen years before joining the Sheraton-Ten Eyck. He traveled extensively in Europe and is well known in the Capital District and New York State.

Throughout his busy career, Mr. Boyer has been known for his civic interest and activity. At one time he headed the Albany Business and Convention



We, as everyone else, rejoice in the glorious spirit that holiday days bring and in your thoughtful patronage. Appreciated thanks to you!

DEL'S RESTAURANT
DELAWARE PLAZA

Spotlight Phone HE 9-4949

WE'RE PROUD OF OUR BUSINESS

PATROON FUELS
INCORPORATED
91 Lexington Avenue
HO 5-3581

WE'RE PROUD OF OUR PRODUCT



The Light Touch

By Bob Jackson

**The Biggest Savings Ever
On America's Top Quality
Line of Power
& Hand Tools**



DELUXE SHOCK-PROOF ORBITAL SANDER

OIL HEAT

Premium Atlantic Heating Oil is Quality Refined . . to ignite instantly, burn clean and steady . . . to give you the most for your heating oil dollar. Call NOW. We provide prompt, automatic delivery service.

Delmar Lumber and Builders Supply, the Nativity will travel around Delmar on a flat platform truck.

Open House

More than 30 educators from area schools attended the Second Annual House for Primary Grade Teachers held recently at the Montessori School in Albany.

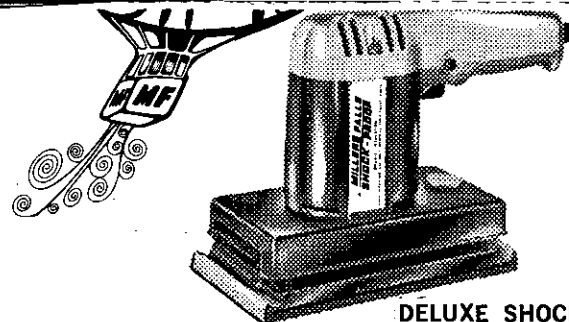
The purpose of the Open House was to acquaint teachers with the Montessori approach to edu-

*As people all over the world found
a good way of life when Christ was
born in Bethlehem many years ago,
we have found a good life in our
Bethlehem—where friendly people are
served by friendly merchants, where
service is a by-word.*

Watch for a star on these holidays of 1966.
You will see it shining over Bethlehem.



Holiday Greetings from the
Bethlehem Chamber of Commerce



10,000 orbits/min. give smoother finishing, faster wood removal and easier operation. Shock-proof. LIFETIME GUARANTEE. No. SP2080
Regular \$22.88

ONLY \$19.99



DELUXE SHOCK-PROOF 3/8" DRIVER DRILL

'Accelerator' trigger switch gives any speed from 0 to 1,000 rpm. Reverses instantly to back out screws and drill bits. Shock-proof—no grounding necessary. LIFETIME GUARANTEE. No. SP2139.

REG. \$36.88 ONLY \$33.33

Other 3/8" Drills at Discount Prices

Regular 16.33 — SALE \$13.06
Regular 28.88 — SALE \$21.66

The salary we used to dream of is the one we can't live on today . .

.....

People who get up at dawn usually do as the rooster does — crow about it . . .

.....

There are two periods in a man's life when he doesn't understand women — before marriage and after marriage . . .

.....

We'd all be happy to pay as we go, if we could only catch up paying off where we've been . . .

.....

Did you hear about the divorced couple who got remarried? The divorce just didn't work out . . .

.....

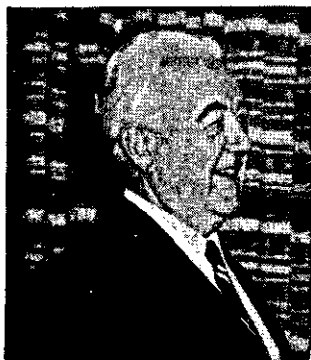
Everything will work out when you come to Delmar Lumber for home decorating ideas and needs.

SEASON'S GREETINGS TO OUR MANY VALUED FRIENDS

	Reg.	Sale
No. 215C 15 piece hex wrench set	\$1.30	.99
No. 39 Wood Scraper	1.69	1.29
No. 3112C 12 ft. power tape	3.25	2.49
No. 190C Magnetic level	4.40	2.99
No. 8514C Screwdriver set	\$5.10	3.99
No. 1008 26" crosscut saw	6.45	4.99
No. 641 Soldering gun	7.95	6.99
No. 106C Carving tool set	8.60	6.99
No. 8006C Power bit set	11.49	8.59



DELMAR LUMBER
SATURDAY HOURS: 8 to 4 (Store & Yard)



Eric H. Boyer

bureau, served on the board of directors of the Greater Albany Chamber of Commerce, was selected as Civic Salesman of the year 1956, and was a member of

the Food Service Executive Association, the New York Restaurant Association and the National Restaurant Association.

Consultant

On December 17, Mrs. Gladys V. Hosey, Chairman of the Business Education Department at the Bethlehem Central High School, served as a consultant at the New York State Education Department.

She and other high school representatives worked with Elton Murphy of the Business Education Staff, reviewing the forth-

coming Regents examination in shorthand and typewriting.

Game Set

The Bethlehem Central High School Men's Association will sponsor the Annual Alumni Basketball Game on December 27 at the Senior High School.

The preliminary game which will start at 7 P.M. will bring together a team composed of seventh grade boys from St. Thomas School and one from the Bethlehem Recreation Department.

The feature game will be between former basketball players

of Bethlehem Central and members of the Faculty of the District.

Following the game the Men's Association will sponsor an Alumni Dance with the music of Brian Runge's Band - The Exodus.

Admission to the game will include the dance afterward.

Meeting

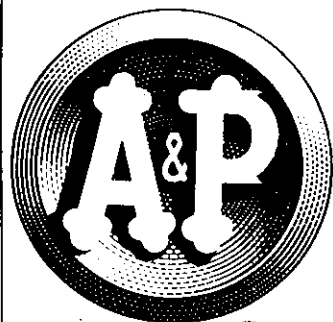
The Delmar Camera Club held its last meeting of 1968 on Tuesday, December 10, at St. Stephen's Church, Elsmere. Programs for the new year will start on January 14.

Florence Becker proved to be

The Bankers
wish you
happy holidays.

The Bank
National Commercial Bank and Trust Company

we care



Merry
Christmas
and
Season's
Greetings
to all
from all of us at A&P

COPYRIGHT © 1968, THE GREAT ATLANTIC & PACIFIC TEA CO., INC.

A&P STORES WILL BE...
OPEN 'TIL 9 ON SAT. DEC 21st
In Addition To Regular Hours Today Thru Fri.

HOW GOOD ARE OUR TURKEYS?

So Good We Dare To Offer...

DOUBLE YOUR MONEY BACK

We're so sure you'll be pleased we confidently offer you double your money back if you're not completely satisfied with any Holiday Turkey you buy at A&P. (Either price label or register tape is necessary, of course.)

**SUPER-RIGHT
COUNTRY TREAT**

SAUSAGE MEAT

2 lb. bag \$1.35

EXTRA LEAN WHOLE HOG SAUSAGE

THRIFTY — WHOLE OR HALF

Slab Bacon lb. **49¢**

MORRISON & SCHIFF

Cocktail Franks 12 oz. pkg. **89¢**

SUPER-RIGHT

CANNED HAM

3 lb. can
\$3.89

8 lb. can
\$7.49

U. S. GOV'T. INSPECTED

Cornish Hens lb. **57¢**

"SUPER-RIGHT" BEEF — 7" INCH CUT

Rib Roast FROM FIRST 4 RIBS lb. **99¢**

"SUPER-RIGHT" BONELESS BEEF

Chuck Roast lb. **89¢**

CAP'N JOHN'S STANDARD

Oysters 12 oz. can **\$1.39** 8 oz. can **99¢**

**WE SELL ONLY U.S. GOV'T
INSPECTED MEATS AS & POULTRY!**

"SUPER-RIGHT" QUALITY GRADE "A"

TURKEYS

OVER 20 TO
24 POUNDS

32¢ lb.

OVER 17 TO
20 POUNDS

35¢ lb.

OVER 10 TO
17 POUNDS

38¢ lb.

**A&P'S ADVERTISED PRICES ARE THE ONLY PRICES YOU WILL
PAY ON THESE TURKEYS... NONE PRICED HIGHER**

SWIFT'S

BUTTERBALL

over 20 to
24 pounds

43¢ lb.

over 16 to
20 pounds

47¢ lb.

(Fresh Turkeys and Armour's Butter Basted Turkeys Priced Higher)

"SUPER-RIGHT" 16 TO 20 POUNDS SHORT SHANK

SMOKED HAM

**FULLY
COOKED**

Water Added

Shank
Portion

45¢ lb.

Butt
Portion

55¢ lb.

Shank
Half

55¢ lb.

Butt
Half

65¢ lb.

Whole
Hams

59¢ lb.

Fresh Festive Fruits & Vegetables!

ORANGES

NAVEL
CALIFORNIA
88 SIZE

10 for **79¢**

CELLO CARROTS 2 lb. pkg. **29¢**

PASCAL CELERY large bunch **29¢**

GRAPEFRUIT

SEEDLESS
PINK OR
WHITE

5 lb. bag **59¢**

YELLOW TURNIPS lb. **8¢**

SWEET POTATOES 2 lbs. **29¢**

The girls at John's Beauty Salons,
wish you a
*Merry Christmas and a
Happy New Year*

**John's
Southgate
BEAUTY SALON**

244 Delaware Ave.
Elsmere, N.Y.
439-1944

Danna Peck
Suzanne Rask
Nancy Ryerson
Helen Beliveau
Virginia Tozer
Genevieve Suttlin



99 Delaware Ave.
Elsmere, N.Y.
439-5621

Alice Gaynor
Brenda Kluck
Carol Dobert
Marianne Baldwin
Terry Haker
Debra Biernacki
Lee Beliveau



a "dyed in the wool" reporter-photographer by placing first in both the black and white and color slide version of newspaper photography, with her entries "A Day at the Races" and "Protestors in Washington Square."

Honorable mention was given to Monica Bishop with a "front-page" story on deer-tagging, and to Elton Lowerree and Mary Johnson for their respective feature stories on "A Nature Walk" and "Salt Beds of France." Fran Gardinier acted as judge and gave us some helpful and pertinent pointers on the art of newspaper photography.



Mrs. Ruth Rinella, Credit Manager of Main Bros. Oil Co., Inc., Delmar.

Promoted

Mrs. Ruth Rinella has recently been promoted to Credit Manager of Main Bros. Oil Co., Inc., Delmar, according to Chester L. Hawley, President.

Mrs. Rinella, a resident of the Town of Bethlehem for 21 years gained her office experience at Albany Community Chest, Inc., as bookkeeper and office manager for 18 1/2 years; at Caruso

Fruit Distributors, Inc., as bookkeeper and office manager for 9 years; at Albany Public Markets as grocery cost clerk for 1 1/2 years; and at Main Bros. Oil Co., Inc., where she has been the accounts receivable bookkeeper for 11 years.

Mrs. Rinella, the former Ruth Dixon, resides with her husband,

This Year give Musical Gifts



COMPLETE STOCK OF
BAND INSTRUMENTS

- Olds
- Conn
- Bundy
- Selmer
- Gibson Guitars
- Fender Amps
- Ludwig Drums
- Slingerland Drums

Largest selection of musical accessories and supplies in the City - also many hard-to-find musical items.

JOHN KEAL'S

MODERN MUSIC CO.

22 Central Avenue, Albany
Phone 434-5214

LEASE!

AUTOS and TRUCKS FOR LESS



Drive CHEVROLETS
or other fine cars.

NO

CAPITAL INVESTMENT
TAX ACCOUNTING
UNFORSEEN EXPENSES

WE CAN PROVIDE

COMPLETE MAINTENANCE - INSURANCE COVERAGE
PLATES AND REGISTRATION

MARSH HALLMAN

LEASING, INC.
781 Central Ave.
Albany, N. Y.

Call John McCarthy, Mgr. 489-5551

Full Maintenance, Net, or Finance Leasing

Samuel, at 487 Kenwood Ave., Delmar.

Fireproofing

The Delmar Fire Department will again spray Christmas Trees with a fire-retardant solution at the Fire House on the following dates:

Thursday, December 19 - 7 to 9 P.M.

Saturday, December 21 - 1 to 5 P.M.

Sunday, December 22 - 1 to 5 P.M.

Any resident of the Tri-Village area may avail himself of this community service.

...

The Delmar Fire Department would like to take this opportunity to thank all the residents of the Fire District who made donations to the recent Calendar Drive. We hope those who have not, will do so shortly.

RECREATION PROGRAM

by William Fuller

Youth Center

During the holiday season, the Bethlehem Youth Center will be open the following evenings for both Jr. High and Sr. High students. During the vacation per-

iod, Jr. High students will be allowed to remain in the Center until closing if they want to. The Center will be open the following evenings between the hours of 7:30 and 11:00 P.M.; Dec. 20, 21, 23, 28 & 30. On Friday, December 27, the Center will be closed so that the students may attend the Alumni-Faculty Basketball Game at the High School and the dance to follow the game.

Swims

The Saturday Co-Ed Swims and Sunday Family Swims will not be held on the weekends of December 21 & 22 and Dec. 28 & 29. The weekend Swim Program will start the 1969 season on January 4 and 5.

Ski Trip

The Bethlehem Youth Center Ski Club will take a trip to Gore Mountain on Saturday, December 21. The bus will leave from in front of the Youth Center at 7 A.M. and return at 6 P.M.

1969 Saturday Programs

On Saturday, January 4, five recreation activities will begin for boys and girls. Bidy Basketball for 5th & 6th grade boys will be held in the Jr. High School between the hours of 9 and 10:30 A.M. The Jr. High School Boys Basketball League will be held from 10:30 to Noon in the Girls' Gym at the Jr. High. From 10:30 to Noon in the Boys' Gym, wrestling for boys in grades 5 and 6 will be held. Boys participating in this new activity will be given permission slips at the first meeting. The Girls' Basketball program will be held in the High School Gym between 10:30 and Noon. The High School Basketball Boys' League will be held at the High School between 1 and 4 P.M. Additional information pertaining to any of the listed ac-

IDEAL CHRISTMAS GIFTS

Panasonic

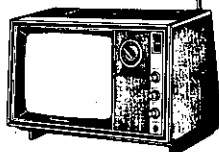
T.V.'S • RADIOS, etc.

now at

Davis Stonewell

New Scotland

HE 9-5398



**JUNCTION HIGHWAYS 85 & 85A
NEW SCOTLAND, NEW YORK**

HE 9-5398

Open Daily and Sundays

10 A.M. to 10 P.M.

Reserve right to limit quantities
Prices Effective Thurs., Fri., & Sat.

12/19, 12/20, 12/21

WE HAVE A FULL LINE OF

- FIRST PRIZE HAMS, also • DUCKS • ROASTING CHICKEN
- GAME HENS AND LARGE SELECTIONS OF CANNED HAM AND OCEAN FRESH LOBSTERS

SWIFT

EMPIRE

TURKEYS

14/16 avg. lb.

33¢

U.S.D.A. Choice & Prime Meats

SLICED CALVES LIVER

LB. 89¢

**GROUND
ROUND**

LB. 99¢

**FRESH BLUEPOINT
LITTLENECK CLAMS**

DOZ. 59¢

**ROUND
ROAST BEEF**

1 09

LB.

MINI-PAKS

15 lb. SIRLOIN STEAK

lb. 99¢

10 lb. GROUND BEEF

lb. 59¢

10 lb. GROUND CHUCK

lb. 79¢

REYNOLDS WRAP 39¢
HEAVY DUTY

LILY OLIVES 5/oz. BUCKET 3 1/2
NBC SNACK CRACKERS 3 1/2

BREAD LOAF 19¢

CLEAR SAIL SWEET POTATOES 303 CAN 10¢

REAL LEMON 2 1/2 oz. 39¢
LEMON JUICE BOT

HOLIDAY ASSORT. CRESCENT COOKIES 2 1/2 lb. BOX 79¢

CRISP ICEBERG LETTUCE LARGE HEAD 19¢

CALIF. NAVEL ORANGES 10 1/2 79¢

GREEN PEPPERS 1/2 20¢

RIVER VALLEY FROZEN PEAS 6 1/2 1.00

PLACE YOUR SPECIAL ORDERS FOR YOUR HOLIDAY CANDIES

Fanny Farmer

or



HEADQUARTERS FOR YOUR CHRISTMAS CARDS AND PARTY SUPPLIES
1969 CALENDARS AND DIARIES

C. M. GROVER Stationers

Delaware Plaza
ELSMERE, N.Y.

tivities or other Recreation activities may be obtained by calling the Recreation Office, 439-4984.

Registration

Registration for the Winter Session of the programs at the Albany Jewish Community Center, 340 Whitehall Road, will begin on Sunday, December 22 from 2 to 4:30 P.M. and will continue through Friday, January 3. The Center will be open for registration during this time period on Monday through Thursday from 9:30 A.M. to 4:30 P.M. and from 7:30 to 9:30 P.M.; on Fridays from 9:30 A.M. to 4:30 P.M. and on Sundays from 2 to 4:30 P.M. Classes are open to all faiths in the community as is membership, which is now being taken for the coming year. Additional information on activities and membership may be obtained from the Center office by calling the Center at 438-6651 or visiting in person.

Junior Department

In the Junior Department,

which includes children four years old through fourth grade, classes and groups will be held weekdays after school in stage crafters, creative adventure, baton twirling, junior boutique, woodworking, ballet and creative dance, junior hostesses, basic arts and crafts, puppetry, home-making, paper mache, cooks and bakers for boys, model making, science club and conversational French.

Sunday Funday and Sunday Show Time promises fun in play groups and entertainment every Sunday afternoon. Play groups are also held weekdays after school.

Intermediate Department

The Intermediate Department is for children in the 5th and 6th grades and offers Friendship Clubs on Sundays and "a Happening" from 4 to 5 P.M. Weekday classes are offered in homemaking, science, baton twirling, stamp and coin, beginners' guitar, conversational French, intermediate boutique, woodworking, dramatics, ceramics, art (sketching, painting, oils, charcoal),

Joseph Bauhofer & Son JEWELERS

SERVING THE PUBLIC FOR 43 YEARS

Specialists In

DIAMOND SETTING • JEWELRY REPAIR
WATCH REPAIR • ENGRAVING

...

WE OFFER FOR YOUR SELECTION
THE FINEST QUALITY

DIAMONDS • JEWELRY WATCHES

...

"NOW AT OUR NEW LOCATION"
Home Savings Bank Building

11 NORTH PEARL STREET

ALBANY

Shop tonight to 9:00



ALL YOUR FAVORITE DOWNTOWN ALBANY STORES WILL BE OPEN TONIGHT TILL 9:00 PM. PARK FREE IN ONE OF 16 CONVENIENT PARK & SHOP LOTS. TRY IT.



debate and cheerleading. The Center Ski Club is open to children in this age group.

Tween Department

Children in grades 7 and 8 are included in the Center's Tween Department. Each Sunday the Center offers to this age group a Tween Canteen Club program and Tween Council group. During the week classes are held in art instruction, ceramics, dance, debate, homemaking, science, stamp and coin, stage crafters, guitar, conversational, French, woodworking, boutique, and cheerleading. A Boy Scout group meets weekly and boys interested in joining should sign up on Tuesday evenings at 7 P.M.

Teen Department

The Teen Department for boys and girls in grades 9 through 12 offers a variety of social clubs, instruction in art and folk guitar, ceramics, sewing, jurisprudence and Jewry and stage crafters. A special Diet Class for Teens is offered on Sunday afternoons.

PHYSICAL EDUCATION & AQUATIC PROGRAMS

Juniors

In gym and pool, the Center offers to Juniors the Sportsman's Club, basketball, pre-school gym and swim, swim instruction, beginners and advanced competitive swim instruction, and synchronized swim instruction.

Intermediates

In the Intermediate Department, physical education activities include basketball, com-

petitive and synchronized swim instruction, bowling, girls' skill class. The Center's Ski Club is open to children in this age group.

Tweens

Classes in bowling, tumbling and acrobatics, trampoline, basketball, badminton, tumbling and physical fitness skills, as well as swim instruction are held for teens and the Ski Club is a popular activity in this age group.

Teens

For the teens, the Center offers a coed club gym program, bowling, basketball, judo and self defense, paddle ball, leaders club, tumbling and acrobatics as well as Ski Club. In the pool, there are classes in junior and senior lifesaving, swim instruction, advanced competitive swim instruction.

Adults

In the Adult Department, classes are held in Yoga, physical fitness for women, women's slimnastics, men's conditioning and volleyball, co-ed badminton, basketball, karate, judo, jogging, body building and weight lifting, physical fitness, bowling, and paddle ball. In the pool, there will be swim instruction, senior lifesaving, and swim and stay fit club and daily classes in Hydro-slimnastics.

Table Talk

"Christmas in Other Lands" is the Table Talk topic this week



TOWN OF BETHLEHEM REPUBLICAN VICTORY DINNER — Assemblyman-elect Walter Langley relates a humorous campaign incident to Spotlight Publisher Robert King and Albany County District Attorney-elect Arnold Proskin. The dinner was held at the Thruway Motor Inn on December 7.

Governors Motor Inn

ROUTE 20 -- Four Miles West of Albany



Make your New Year's Eve reservations for a night of fun with noise makers, hats, etc.

TWO BANDS — EXOTIC DANCERS

\$40 a couple, buffet dinner, champagne and all drinks for the evening

\$45 — Steak dinner instead of buffet

Reservations Only — 438-6686

FREE PICKUP AND DELIVERY

SAVE MONEY

ON YOUR

LAUNDRY

TRY OUR
WEEKEND ECONOMY
BUNDLE

ALL FLAT WORK IRONED
INCLUDING HANDKERCHIEFS
AND NAPKINS — OTHER ITEMS
FLUFF DRIED

9 LBS. \$1.69
JUST

And Only 17c for Each Additional Lb.

PLUS!

SHIRTS BEAUTIFULLY FINISHED AT 19¢

EACH ADDITIONAL IN OUR
WEEK-END ECONOMY BUNDLE

GRACE LAUNDRY

2 Ring St., Rensselaer, N. Y. Phone 434-9194

Season's Greetings

SULLY'S TAVERN
(Formerly Bulson's)

New Year's Buffet
439-1603

1360 New Scotland Rd. Slingerlands
(John E. Sullivan, Prop.)

Season's Greetings

to all our friends
DEVINE'S LIQUORIUM
at Delaware Plaza



Come in and check on our low, low prices
Finest imported Wines, Liquors, and all named brands.
Telephone 439-4361 Mon.-Sat.: 10-10

GLENMONT Liquor Store

GLENMONT, CORNER 9W and Old 32
AT THE LIGHT

MANAGER — ERIC BOYER



Holiday Specials on
SCOTCH • RYE • GIN
VODKA

Discount Prices

EXPERT ADVICE ON PARTIES & BANQUETS

LARGEST SELECTIONS ON
DOMESTIC AND IMPORTED WINES

as Mrs. Eleanor Wages, program hostess, interviews guests from Germany, Switzerland and the Philippines.

Miss Emi Zimmerman will explain the Christmas customs in Germany, her native country. Miss Doris Brunner from Switzerland will highlight the Swiss traditions of Christmas, and the Christmas celebration in the Philippines will be discussed by Mrs. Maria Bautista. Each country has its own unique traditions but similarities will also be noted.

Table Talk can be seen on Christmas Day on WAST, Channel 13, at 7:30 A.M. and later in the afternoon at 4:30 P.M. on WMHT, Channel 17.

Plant Warning

During this holiday season, many plants that are used to decorate the home, could also bring great sorrow. According to the Agricultural Division of the Co-operative Extension Asso. of Albany County, many Christmas plants and decorations are poisonous if eaten.

Our most common Christmas favorites can be fatal if eaten. For example, one poinsettia leaf can kill a child. Mistletoe berries have been known to kill adults as well as children. Even some of the greens that are used to decorate our homes can kill. The poisonous ones include laurels, rhododendron, azaleas and yews (taxus). All parts of these plants are poisonous if eaten.

This warning is not intended to

keep you from decorating your home. However, use these plants and decorations with care, keep them where children cannot reach them and help keep this the joyous season. Just remember, that these decorations are safe to look at and to touch, but not to eat.

Tournament

The Albany YMCA annual Christmas basketball tournament will be held from December 23 through January 2, 1969, according to an announcement today by Forbes Brown, Executive Director.

The tournament is open to boys in the 7, 8 and 9th grades in the Capital District. No junior or varsity players are eligible. Ten players will be allowed on each roster.

Trophies or medals will be awarded to the winners and runners-up.

Hazards

Mr. William E. Borst, Manager of the Adequate Wiring Bureau of Eastern New York, said today that "Christmas is a time for happiness . . . and no time to be heedless of fire dangers." He said that fire precautions should be doubled. "Many of our traditional Christmas customs — trees, colored lights and decorations — add to the fire hazard in the home," said Mr. Borst. "Sometimes a combination of active children and preoccupied parents allow one moment of



Santa says . . .
you'll be
"Surprised"

what a
"Little Mink"
will do for the
"Little Woman"!



Beck FURS

Phone: 465-1734
111 Clinton Ave., Albany, N. Y. Full Length Coats
"Finest in Fur Fashions"

Large selection
of Stoles —
Jackets and

carelessness which is all that a fire needs."

"Hundreds of families will experience tragedy during the holiday season because of the lack of adequate wiring systems in their homes. During the holidays, home wiring systems are frequently overloaded with the use of outdoor decorative lighting and too many light sets being placed on one outlet to light Christmas trees and decorations. Overloading circuits in this manner is one of the most frequent causes of fire in the home."

Mr. Borst advised homeowners to have an all weather outlet installed on the exterior of the home if outdoor lighting is to be used. It's much safer and more dependable. And, of course, there are many uses for such an outlet the year around.

"Also," said Mr. Borst, "many families will be receiving electrical gifts for Christmas - toasters, television sets, dishwashers, electric blankets and many other - and they most certainly will contribute to the demands on your wiring system. Not only might this present a fire hazard but also make the electrical gift useless."

"My recommendation is that you have your home wiring system inspected by an Adequate Wiring Bureau member electrical contractor now and be safe. He will make this housepower inspection without any obligation to you. However, if wiring is necessary, he is qualified to do the job in the most professional manner."

Adequate Wiring Bureau member banks are aware of the many dangerously outmoded wiring systems. They can provide you with low-cost wiring improvement loans to update your present wiring system to meet the electrical demands of today and the future.

"Caution and a complete check of home wiring systems are the best assurance of a safe and happy holiday season," concluded Mr. Borst.

Diseases Isolated

Cornell University plant scientists advise New York corn and wheat growers to keep a sharp eye on four plant diseases that have appeared in some areas of the state.

Of the diseases, yellow leaf blight that strikes field corn was found in the state for the first time this year, reports Prof. Carl W. Boothroyd, plant pathologist at the N.Y. State College of Agriculture, Cornell.

Two other corn diseases that have been discovered in the state during the past two years are maize dwarf mosaic and kernel red streak. A disease known as "varegation" that causes yellowing of wheat leaves also was reported.

Profs. Boothroyd and Otto E. Schultz, both in the plant pathology department of the college, discussed symptoms of these diseases at the annual Cornell Seed Conference held here recently.

MERRY CHRISTMAS
and a
HAPPY NEW YEAR

To our friends and patrons
from
Frank Corenti and employees of the



LARKIN RESTAURANT

199 LARK STREET, ALBANY, NEW YORK

"Give the family a treat." Bring them in for a delicious Christmas or New Year's Day Dinner, with a tempting menu to choose from. Children under 10 - 1/2 price.

The Larkin will be open all day on both these holidays.

RESERVE EARLY - HO 3-9582

Brides! 6 reasons...

why you should register here:

SILVER-We are one of the few dealers in the entire Northeast who are authorized to carry all the Famous-Name lines of Silver. Large supply of patterns on hand.

CHINA-You may choose from an exquisite collection . . . Lenox, Haviland, Royal Worcester, Royal Doulton, Oxford, etc.

CRYSTAL-Choice selection of most of the renowned makers . . . Josair, Fostoria, Seneca, Lenox, etc.

INVITATIONS-Bridal invitations furnished at a special price for our Brides.

CHARGE ACCOUNTS-Thousands of families in the Tri-Cities area enjoy Adams Charge Accounts . . . your friends would rather purchase here.

ENGRAVING-As a special service . . . highly skilled Engraving available with your purchase.

REGISTER TODAY
There's No Charge

FRANK H.

Adams

JEWELERS - SILVERSMITHS

Park and Shop

HO 3-3278

Cor. N. Pearl and Stueben Streets, Albany

Free Parking at All 16 Park & Shop Lots

Merry Christmas
and
Happy New Year

FROM THE BOYS OF

BILL STEWART'S SHELL



Corner Delaware & Euclid Ave., Delmar
439-5091

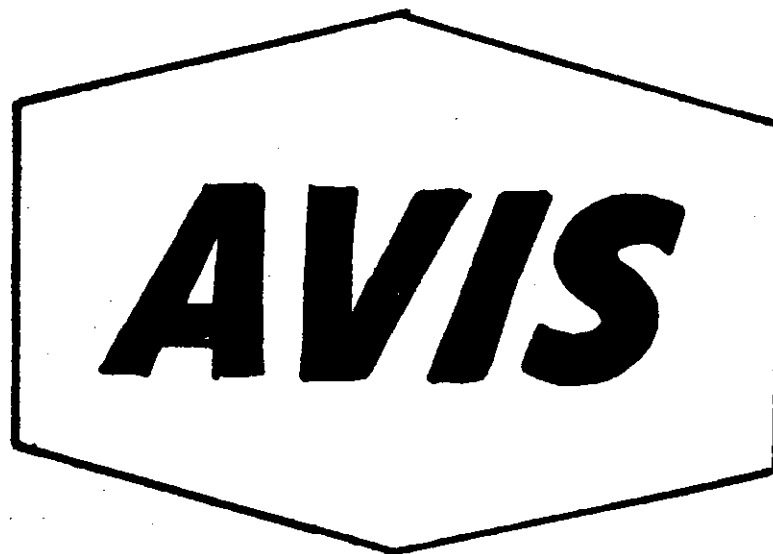


Shown above are three of the winners being presented their checks by George W. Poticopoulos, president of the Avis franchise in Albany. Left to right are Kenneth Metchick, Tracey Dott, Theresa Pointek, Jane McCarthy, Avis hostess and Mr. Peticopoulos.

Congratulations

TO THESE BUDDING YOUNG ARTISTS . . .
WINNERS IN THE RECENT AVIS RENT-A-CAR
"MOST UNWANTED BUG" COLORING CONTEST

- Theresa Pointek, 114 Highland Ave., Rensselaer, N.Y.
- Tracy Dott, 39 Tampa Ave., Albany, N.Y.
- Kenneth Metchick, 37 Jeanette St., Albany, N.Y.
- Terri Delaney, 1155 Ft. Hunter Rd., Schenectady, N.Y.
- Pamela Lewis, 9 North Street, Delmar, N.Y.
- Joyce Ann Dubuque, Elm Avenue, Selkirk, N.Y.
- Kerry Aiken, 1099 Central Ave., Albany, N.Y.



RENTA CAR

Reservations 482-4421
ALBANY COUNTY AIRPORT

ALBANY
Central &
Watervliet Ave.

SCHENECTADY
Franklin &
Nott Terrace Sts.

WATERVLIET
Nineteenth St. &
Second Ave.

Gifts ...that give your home a cheerful glow all year round

Combine real pleasure and Christmas Shopping ... AND SAVE MONEY TOO! Visit us soon and see our huge display of furniture, priced to sell ... for Christmas!

Hawley Company

EAST ARLINGTON, VERMONT

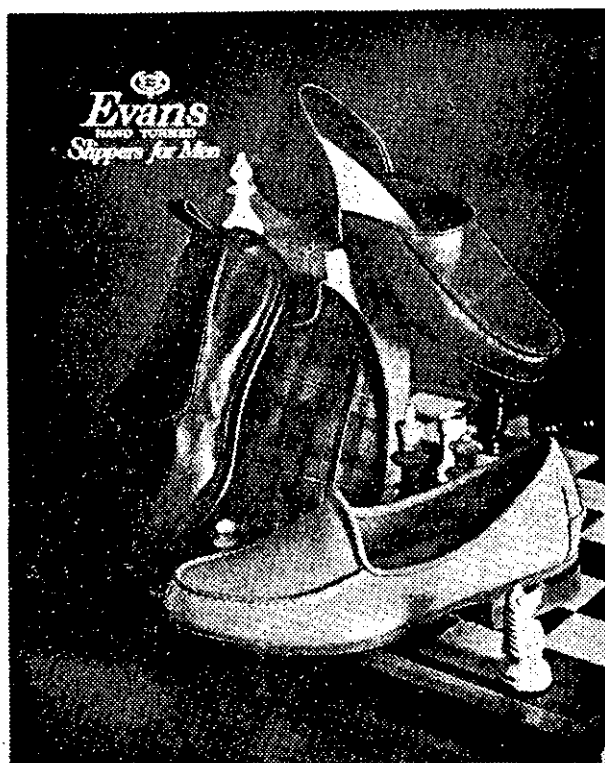
Tel. 375-6675

Hours: Mon., Wed., Thurs. & Fri. 9-5 - Sat. 9-4 - Sun. 1-5 P.M.

—SHOP DOWNTOWN—

SHOP T. ARTHUR COHEN

GREAT FOR HIM



**Evans Slippers
Are Perfect For
Indoor Sports**

The perfect gift for your special guy! Shown above are: the Traveler (10.95) which folds into a compact carrying case; the Baronet (8.95), and the Cherokee (9.95)

ALL SIZES TO 13

T. Arthur Cohen

• SHOE SPECIALIST •

81 CHAPEL STREET

OPEN MON.-FRI. 9-9 THRU DEC. 23

OPEN SAT. 9-6

None of these diseases pose any serious threat to corn or wheat crops at this stage, but farmers are urged to watch for them in the future, they said.

Found for the first time this year at Aurora, yellow leaf blight is caused by a fungus, believed to be *Phylllosticta*, Boothroyd reported.

Affecting field corn, this malady caused some damage in other areas, including Chautauqua, Chemung, and Delaware Counties.

It causes leaf spotting of lower leaves, which works upward, and these spots eventually come together to form yellow blighting of corn leaves, he explained.

"The disease," he said, "causes little damage to corn in the state at this stage, although it might reduce yields if it gets in early and spreads.

Maize dwarf mosaic, a viral disease, was found in nine counties in New York for the first time last year. It was discovered in seven additional counties this year, Boothroyd reported.

Damage to the yield is slight because the disease shows up so late in the season; it is more apparent in sweet corn than in field corn, he said.

Discussing kernel red streak of corn and the wheat malady, Prof. Schultz told the conference that these diseases have been spotted during the past few seasons.

Research conducted in Ohio has led to the conclusion that red streak is due to a poison carried by the wheat curl mite as

it feeds on corn kernels, he said.

Kernels, particularly those near the top of small, partially-filled ears, display deep red streaks which run from the base to the top. The discoloration is almost entirely restricted to the outer kernal wall, and as far as is known it does not reduce the feeding value of the grain, Schultz said.

"It is felt that the problem is aggravated by drought or bird feeding which loosens the husk at the top of the ear and allows mites to gain easy access to the kernels," he said.

Research is being conducted at Cornell and other universities in several Midwestern states to determine the cause and effect of "variegation" in wheat, said Schultz. This problem was first encountered in many parts of New York in the spring of 1967.

Although it seems likely that the disease will cause a reduction in yield, accurate figures on damage in the state are not available as yet, he said.

#1 Job

One-half of the 1968 graduates from the N.Y. State College of Home Economics at Cornell University who have reported employment are involved in teaching of some kind, according to a College Placement Office report.

Although most graduates in this category are secondary school teachers, every level of education from nursery school through college teaching is represented. Several work with

Merry Christmas
and
Happy New Year

DELMAR BOOTERY

HE 9-1717

Jack Leonardo, Prop
Shoe Rebuilding by Factory Method

Four Corners

special groups, such as the mentally retarded and handicapped. Three graduates teach adults through the Cooperative Extension program.

Twenty-seven per cent of the 1968 graduates reporting employment list business and promotion work, ranging from retailing and design jobs in large-city department stores to food testing and promotion for commercial food firms.

Fifteen per cent of the employed graduates hold social and group work jobs. Most are case-workers in private or public welfare agencies in New York and other cities.

The remaining graduates with jobs are involved in administrative dietetics and research and technical work.

According to the study, about a quarter of the 203 graduates are studying for advanced degrees at institutions such as Harvard, Michigan State, Boston University, Columbia, Syracuse, Cornell, Illinois, Wisconsin, Tufts, and several units of the State University of New York.

Buys into Florida Food Operation

Michael Davis, President of Neba-Mike's International, Inc., announced that John R. Milanese, area real estate broker, has acquired an interest in his company. Mr. Davis also announced

ed Milanese's appointment to the advisory Committee of Neba-Mike's and named him real estate co-ordinator for the New York-New England area.

Mr. Milanese, when contacted, stated that he is instituting a crash program in the New York State area and that 10 new stores are planned for the Albany, Greenbush, Guilderland, Troy, Delmar, Schenectady, Saratoga areas, and are also already negotiating for additional stores in Syracuse, Buffalo, Rochester, Binghamton, Ithaca, Rome and Oswego.

Mr. Davis also commented that Mr. Milanese will, in his co-ordinating position, serve the company through its Hollywood, Fla., and Medford, Mass., offices. Neba-Mike's International has leased the corner of State and Pearl Sts., and will open its 100th unit after extensive renovations.

Edward Zwick, originally of Albany and presently serving as House Counsel of Neba-Mike's International will serve as liaison between the Medford and Florida offices in this new company set-up. Mr. Davis announced that due to the expansion of his company into the International Market, a regional development program would expand his local markets. The home offices of Neba-Mike's International, Inc. are located 2227 North Federal Highway, Hollywood, Fla.

At Museum

Mr. and Mrs. R. S. Foy of Wemph Road, Glenmont, recent-

Christmas Cards

COMPLETE STOCK

- Hallmark Christmas Cards
- Fenton Milk Glass
- Stuffed Toy Animals
- Exquisite Gift Items
- Huge Selection of Novelty Gift Items
- Christmas Card Imprinting

CARD FAIR 41 State St., Albany
52 No. Pearl St., Albany

ALL ENJOY

CHRISTMAS WITH STANLEY'S AUTO INSTRUCTIONAL DRIVING & ALWAYS CONTROLABLE TRAILERS

Universally Acknowledged Eliminator of Dangerous JACK-KNIFING
436-9270 281 First St., Albany, N.Y. 459-6093

Stewart's ICE CREAM STORES CHRISTMAS		
EGG NOG	CHESTNUT PUDDING ICE CREAM	PERKY NOG
FRENCH VANILLA ICE CREAM	STRAWBERRY CHOCOLATE TARTS	SPUMONI ICE CREAM
(CHERRY) BELL CENTER ICE CREAM	CAKE ROLL NUT LOAF NUT ROLL	PEPPERMINT CANDY ICE CREAM

WEEKEND
SPECIAL

Thurs., Fri.,
Sat. & Sun.
DEC. 19, 20,
21 & 22

CHERRY BELL CENTER

88¢ a half gallon

HOURS: 10 A.M.-10 P.M., 7 Days A Week

SEASON'S



RUG CLEANERS
CARPET SALES

243 Delaware Ave., Delmar
Phone 439-9978

**GIVE
ORIENTAL RUGS**

PICTURE YOUR HOME
THIS CHRISTMAS

In it, you can have the loveliest gift of all - a **MAGNIFICENT IMPORTED HAND MADE ORIENTAL RUG**. A gift you and your family will cherish for years to come.

9x12, from \$295.00
Scatter sizes from \$15.00

KERMANI ORIENTAL RUGS
of SCHENECTADY

3905 State Street - (Stop 3 - Alby-Schdy Rd.)
Hrs: Mon-Sat. 10-5:30 - Tue & Thur till 9)

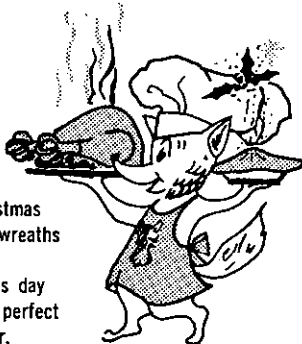
EX 3-6884
terms available

Make it our place for Christmas dinner.

Christmas dinner should be a delight, not a chore.

And that's why we're suggesting that you join us this year. We've planned a holiday-splurge menu packed with all the traditional favorites and some gloriously pleasant surprises.

You'll find a touch of Christmas magic, too, with holly and wreaths and garlands and lots more. So, merry-up your Christmas day with us. You'll find it the perfect recipe for Christmas dinner.



**Golden
fox**



**Steak
House**

Phone: 459-3500

Complete menu
served
1 PM till 2 AM

Across from Colonie Center

ly visited the state-owned Ringling Museums while vacationing on Florida's lower west coast.

The Ringling Museums are the foremost cultural center in southeastern United States. Situated on 68 tropically landscaped acres in Sarasota, they were a gift of John Ringling to the state, and are operated in the cultural and education interests of Florida residents and visitors.

They consist of the Museum of Art, famed for its outstanding collection of Baroque art; the Asolo Theater, only original 18th century Italian theater in America; the Ringling Residence, "Ca'd'Zan," a \$1,500,000 Venetian Gothic palazzo; and the Ringling Museum of the Circus, the first museum dedicated to the history of the circus.

In addition to the exhibition of the permanent collection, the Museum's functions include a diversified program of temporary art exhibitions, art education services, lectures, films, concerts, chamber music, a winter opera season and a winter and summer festival of plays by the Asolo Theater Festival company, the official state theater of Florida.



Spotlight Classifieds
Tell The World!!!



Merry Christmas

**BROCKLEY'S
DELMAR TAVERN
AND RESTAURANT**
367 Delaware Avenue, Delmar

We Stole This

We happened to see the following article in the current issue of SPIKEHORN SCRAPS newsletter. This organization is the area chapter of SPEBSQSA, Ravena - Coeymans - Selkirk - Glenmont - Cedar Hill.

If the rest of the committee chairmen would get on the ball and get their news in to me I

Tennis Star To Visit Area



BILLY TALBERT will address the Bethlehem Tennis Association Jan. 13 at the Bethlehem Junior High School cafeteria. Talbert is a member of the National Lawn Tennis Hall of Fame. He is a former Davis Cup team captain and is the holder of 33 national championships. Reservations may be made by contacting Douglas Ferguson at 439-5282.

— THE NEW —
**ELSMERIAN
RESTAURANT**

**Delaware Shopping
Plaza**

**In Elsmere
Proudly Presents
Nightly . . .**

For Your "Listening
And Dancing Pleasure"

*** Jimmy Cosgrave**

**At the Organ & Piano!
Playing Your Favorites**

**FINE FOODS & CUISINE
Wedding Parties-Banquets**

Make that NEW YEAR'S EVE
RESERVATION . . . NOW!
(Open house - No cover charge)
CALL 439-9898

wouldn't have to write this. How about it fellows? Get me something next month.

Thought you might be interested in this one, and I'm not trying to soft soap you. DUZ you DREFT along with the TIDE? VEL, now is the time for ALL to CHEER up. If you want real JOY, the TREND is to BREEZE to the meeting each Monday evening at the RCS high school at 8:15. Alas, too many WOOD-BURY their heads in a pillow like HANDY ANDY, forgetting that the time is for LESTOIL. Forget not that the DOVE of peace will never send out an S. O. S. if you keep singing. Don't trust to LUX, WISH yourself out of bed, dress up SPICK AND SPAN and DASH like a COMET to our next meeting. Your LIFEBOUY will become full of ZEST.

Now maybe that will teach you to get your copy in. —Editor

Santa, Take Note!

Gore Mountain Ski Area at North Creek, New York, has to be the only ski area around boasting of two nurseries — one for two-legged dears, and one for four-legged deer.

While mother, dad and the rest



FRANK D. CERABONE of Delmar, has assumed the duties of Executive Vice President of the New York State Builders Association. The Appointment was announced by Peter L. Cappuccilli, Syracuse Builder and President of the Association. Mr. Cerabone was formerly Executive Vice President of the Albany Area Builders Association and Prior to that served as Governmental Affairs Secretary of the Long Island Builders Institute.

of the family ski, small children are cared for in the kiddie nursery at Gore Mountain — a service available at a nominal charge since the center opened four years ago.

Gore's deer nursery, a novelty this season, is a half-acre fenced tract, adjacent to the J-bar novice slope, where ten orphan fawns are being protected and brought up by ski area personnel.

Last May, a Conservation Officer brought the first orphan to Manager Dick Brennan at Gore Mountain. The little one, rescued when his mother drowned in a river, probably would have perished without protection. Gore took in the foundling, the news spread, and other cervine waifs arrived.

Conservation Officers brought a total of twelve, some injured, to Gore's nursery from all over the northern and eastern part of the state. Of those injured, two died. One had been hit by a car, and the other had been attacked by dogs. The remaining ten, raised on condensed milk and pabulum, are healthy, happy, and a delight to Gore Mountain visitors, especially the children.

Under the supervision of Regional Conservation Officer Francis L. DuCuennois of Warrensburg, the young deer have reached the "solid food" stage their diet consisting of powdered milk, horse feed, some oats and special hay. Five are bucks, and all are growing normally.

Next April, after the snow goes and natural feed is available, the ten will be released to enlarge the wild deer herds around Gore Mountain. Their present feed box will be maintained, in case they choose to use it.

Through the past summer, as many as 200 people a day have come to Gore to see, pet, and feed the tame little Bambis. Now that the skiing season is under way, Gore's deer orphanage is a bonus attraction of a ski complex that offers five chairlifts, a T-bar, the only gondola lift in New York State (soon to be opened), 22 trails, and two open slopes.

Gore Mountain Ski Area, as



FRESH

CHRISTMAS TREES

BALSAM WREATHS

POINSETTIAS and CYCLAMEN

RED RUSKS AND GREENS -- ALL SIZES -- FOR DECORATIONS . . ALSO ARTIFICIAL

ALL KINDS OF CENTERPIECES

ARTIFICIAL CHRISTMAS CEMETERY PIECES

All Kinds of Ornaments for Christmas Trees—

Also Lights

MARIANI'S

GARDEN CENTER FLORIST

Dom Mariani, Prop. — 342 Delaware Ave., Albany — Corner of Bertha St. — Tel. 462-9146

Myers
DOWNTOWN
ALBANY

Christmas Store Hours:
10:15 to 9:00
Daily

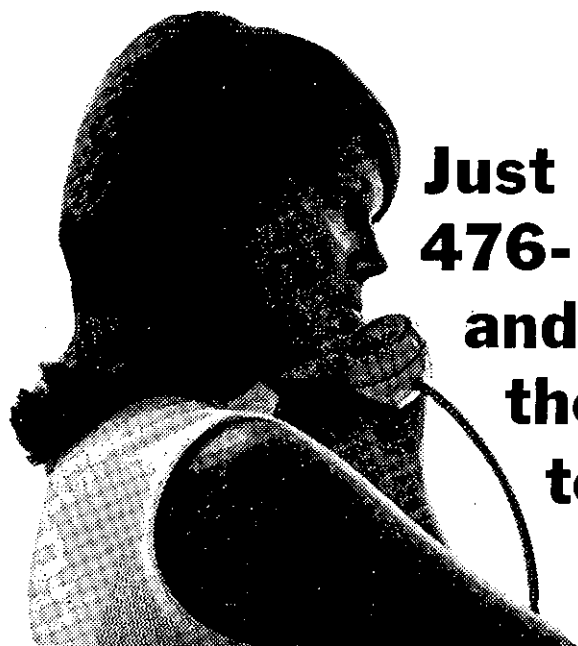
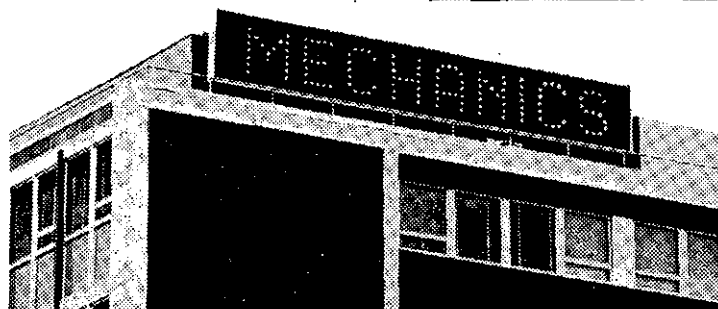


"Only a few more days!"

til Christmas. Now let me see! There's Aunt Minnie and Cousin Joe to remember, also something for Mrs. Jones, the next door neighbor and Myers still has plenty of gifts to choose from. But don't put it off 'til tomorrow, come down today to Myers that is.

Downtown, Albany

**If you don't see the "me" bank's
time and temperature signs on
Capitol Hill...**



**Just phone
476-1111 day or night,
and we'll tell you
the time and
temperature.**

save with
me
mechanics exchange
savings bank

member fdic

111 washington avenue • 41 state street • stuyvesant plaza



SPOTLIGHT CLASSIFIEDS
HE 9-4949

well as Whiteface Mountain in the Adirondacks and Belleayre Mountain in the Catskills, is operated by the New York State Conservation Department.

About Time!

New York State's Water Resources Commission announced today it would conduct a public hearing on the prevention of watercraft pollution of the waters of the State.

The hearing will be held January 10 at the State Health Department Auditorium, 84 Holland Avenue, Albany.

A spokesman for the Commission said the hearing was occasioned by "a high volume" of letters protesting legislation which prohibits the discharge of settleable solids to the waters of the State and requires the installation and use of State-approved marine toilet pollution control devices on all boats on New York's waters beginning next March 1.

The legislation, Section 33c of the State Navigation Law, vests responsibility for establishment of health standards for acceptable devices in the Health Department. Enforcement of the requirement for installation and use rests with the Conservation Department's Division of Motor Boats.

The Health Department has ruled that only holding tanks and incinerators which do not discharge settleable solids are acceptable for use.

Macerator-chlorinators have been ruled unacceptable because they discharge settleable solids into the receiving waters in violation of Article 12, Section 1225, of the Public Health Law.

The prohibition against settle-

able solids is a limitation set forth in the "Classification and Standards of Quality and Purity for New York State Waters" adopted by the Commission, which has responsibility for establishing water and stream quality standards.

Winter Classes

The Albany Jewish Community Center, 340 Whitehall Road, Albany, announces that registration for courses in the Adult Education Program will begin Sunday, December 22, and continue through Sunday, January 5. Over 30 classes covering a wide range



of interests will be given.

Classes in Folk Dancing on Wednesday night, Ballroom Dancing on Tuesday evening and Modern Dance on Tuesday and Thursday afternoons will be given.

There are nine classes both day and evening offered in art

instruction such as sketching and pastel painting, abstract art, oil painting and still life. In addition, there are 2 classes given in ceramics. Such well known artists as Lu Martinson, Frank Alexander, John King and Pat Morris will instruct the art classes. Janice Shoor, ceramicist, will

The all New Downtown Schatz

Albany's BIGGEST (little) STATIONERY STORE

34 Maiden Lane
Albany

Personalized Stationery

24-HOUR SERVICE . . . of course
On Your Favorite Paper

New Styles and Colors of Princess Gardner and
Prince Gardner Wallets, Key Cases
French Purses for Him and Her

Large Selection of
Photo Albums

Pen & Pencil Sets by
Parker & Cross

Open every evening till Christmas

MERRY CHRISTMAS

PHOTOGRAY™ Glasses That Darken And Clear Automatically



PHOTOGRAY Lenses will darken in 60 seconds in open sunlight & recover in 5 to 10 minutes when removed from sunlight.

Available in non-prescription glasses, bifocals and/or safety lenses.

A UNIQUE CHRISTMAS GIFT



DiNapoli & DiNapoli

PRESCRIPTION OPTICIANS

HO 3-4340

215 Lark St., Albany

FREE PARKING at Park Branch, National Commercial Bank (One Block Away)

463-5411

434-7900

THE LOWEST LIQUOR PRICES

in the area - on all popular brands
or

**VOORHEESVILLE
LIQUOR STORE**

RO 5-2683

teach molds, free form, potting wheel, and glazing.

A class in gourmet cooking on Thursday mornings, given by Fran Dembling, will also offer diet dishes. Mrs. G. Dudley Cummings will teach a five-session course in Flower Arranging and Table Settings on Thursday mornings as well. Classes in Tissue Flower Creations, Beginners' Sewing, Tailoring, Woodworking and Bridge classes for Begin-

ners and Advanced Players, will be offered.

For those adults who wish to continue their studies, classes in Comparative Religion, instructor Barbara Leibman; Creative Writing and Modern American Fiction will be offered. Both Peter Cousins and Peter Larrick, instructors in creative writing and American Fiction are members of the English Department at SUNYA.

Two Diet Classes, Monday evening and Tuesday afternoon will combine both instruction in proper diet (using the New York City Board of Health plan) and the latest exercise in water called Hydro-slimnastics. Instructor, Betty Clark is the Center's Aquatic Director.

All Adult Education classes are open to the public and anyone wishing to register for the full session may come to the Cen-

ter or call 438-6651. Classes will begin the week of January 5.

New Law

Sales of guns and ammunition are now controlled under the new Federal gun law which took effect December 16.

Donald T. Hartley, Albany District Director of Internal Revenue for Northeastern New York State, said IRS is preparing material to help gun dealers, gun buyers and collectors comply with the new Gun Control Act of 1968 which was enacted by Congress in October.

Persons under 21 will be prohibited from purchasing pistols, revolvers, and ammunition for such weapons and persons under 18 will not be permitted to purchase any firearms or ammunition.

TV Program

Blue Shield of Northeastern New York, Inc., will sponsor the first of a three-part filmed documentary focusing on the tragic plight of young drug users, Saturday, December 21, at 5:00 P.M. on Channel 6, WRGB. The program will be repeated Sunday, December 29, at 6 P.M., also on WRGB.

The opening film in the trilogy, produced by the Airlie Foundation, is entitled "A Movable Scene." Narrated by Actor Robert Mitchum, the film vividly and poignantly conveys the frustrations and disillusionment experienced by the young drug addict. Filmed in the streets and hippie haunts of San Francisco, New Orleans, London and Istanbul, the camera records the addict's initial exposure to marijuana — known as "pot," "grass," and "maryjane" in the hippie's jargon — and his all too frequent graduation to the addictive and hallucinogenic drugs, such as LSD and Methadrine.

This film, perhaps as no other to date on the subject, succeeds in transmitting to an audience the personality of the addict: his thoughts, ambitions and shattered ideals.

"A Movable Scene" does not rely on the sensationalistic or expose approach to drug addic-

SAVE WITH MOHAWK!

MOHAWK — STORM TRAC, 4 FULL PLY NYLON SNOW TIRES

SPECIAL PRE-SEASON SALE PRICES

Size	Black	White Wall	Size	Black	White Wall
600x13	\$17.25	\$19.75	560x15	18.00	20.50
650x13	17.75	20.25	685x15	19.50	22.25
700x13	18.75	21.25	735x15	19.75	22.25
695x14	19.50	22.00	775x15	20.75	23.25
735x14	19.75	22.25	815x15	21.75	24.25
775x14	20.75	23.25	845x15	22.75	25.25
825x14	21.75	24.25	885x15	23.75	26.25
855x14	22.75	25.25	9.15x15	26.50	29.00
885x14	23.75	26.25	"All Prices Plus Tax"		

BUDGET
TERMS

NO MONEY DOWN

**FREE
MOUNTING**

BUDGET
TERMS

- Expert Front End and Complete Brake Work
- Wheel Balancing • Recapping

WEINBERG TIRE CORP.

(Established 1917-1966 — 49 Years Dependable Service)

935 CENTRAL AVE.

IV 2-4449

Next to Westgate Shopping Center

OPEN DAILY 8-5:30 — SATURDAY 8-5

MONTGOMERY WARD

DELMAR STORE
222 DELAWARE AVENUE
DELMAR, NEW YORK

your Christmas Store

*Shop by Phone from
Wards Christmas Catalogs
Phone 462-2611*



See Wards big new Christmas Catalog and the 1363 page Fall Catalog for a fabulous selection of gifts. They offer a wonderland of ideas whether you're looking for something special or something practical. This year really enjoy your Christmas shopping at home.

ORDERS PLACED BEFORE 12 NOON MONDAY THRU FRIDAY, WILL BE READY FOR PICK-UP AFTER 12 NOON THE FOLLOWING DAY (except items stocked in detached warehouses).

*Just say "Charge It"
at Wards*

FOR YOUR HOLIDAY SHOPPING CONVENIENCE,
DELMAR STORE WILL BE OPEN MONDAY THRU
FRIDAY, 9:30 A.M. TO 9:00 P.M., SATURDAY TO
5:30 P.M.



Merry Christmas

It's time once again to take pause,
in the spirit of the beautiful Christmas season,
to greet fine friends and neighbors with best wishes.
And to add deep appreciation for your favors, good will.



tion. Rather, it presents a frank, documented portrayal of the addict as a disoriented individual in search of an elusive utopia.

The film does not attempt to moralize on drug addiction. Instead, it gives the viewer, particularly the young viewer, the opportunity to view for himself those who seek escape in this "other world" of drugs.

The film is available for group showing to service groups, schools and organizations. Contact the Communications Department at the Blue Shield in Albany for more information on the availability of the film. Literature is also available and can be obtained from the Albany County Mental Health Association at 621 Central Avenue in Albany.

Gardener's Christmas

Do you have a friend or relative that you have trouble finding presents for? If this friend is a gardening enthusiast, your problems may be solved.

Gardeners can use a variety of

tools. Some of these are basic tools such as shovels, spades, hoes and rakes. Most gardeners have these. Other tools are more specialized and may not be on your gardener's shelf.

Pruning tools are specialized tools that your gardener might appreciate. These include hand pruners, hedge shears, long handled pruners called loping shears, tree pruners on a pole and pruning saws. Tools of this nature will be used by anyone who has shrubs and trees to take care of.

Other tools such as trowels, bulb planters and grass shears are also welcome gifts.

A compressed air sprayer is a little more expensive gift, starting at about ten dollars and up. The more expensive sprayers have stainless steel tanks and will last many years.

For the hobbyist who likes to grow his own plants indoors, a fluorescent lamp fixture may be a good choice. A regular fixture with a reflector can be used or most garden stores have special fixtures for plants. Timers are also available to automatically turn these lights on and off.

A trip to your favorite garden center will give you many more helpful ideas. And, if your gardening friend has everything, or if your not too sure of his needs, how about a gift certificate? Most garden centers and mail

★ Ice ★ ★ Skating

America's favorite family fun

AT YOUR FRIENDLY FAMILY RINK

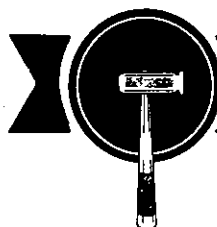


RPI FIELD HOUSE
BURDETT & PEOPLES AVE.
TROY, NEW YORK, 12180
FOR INFORMATION - CALL 270-6262

EASTMAN
CHEESE
HOLIDAY—GIFT
ASSORTMENTS
BANGERT'S
MARKET
423 Quail St. 482-5322

GREETINGS of the SEASON

Many thanks to all our many friends and customers!



UNIQUE
BODY SHOP
242 DELAWARE AVE., DELMAR

order houses provide gift certificates and your friend can get just what he needs.

With the wide choices of gardening tools and accessories, shopping for a gardener is really quite easy.

State's Economy Moved Upward

New York State's economy maintained its high level of activity in October, the State Commerce Department reported today.

The State's preliminary, seasonally adjusted Index of Business Activity rose one point over the month to 138 (1957-59 equals 100) to equal the record high set in July and August.

The finance - insurance - real estate component of the Index gained two points to attain 169. The retail (124), service (152) and wholesale activity (140) components each rose one point. The factory activity component remained at 136.

Over the year, the Index gained five points with all seven components realizing sizeable increases.

Total employment in New York State registered 7,890,000 in October, the highest level ever reached for the month and an increase of 20,000 from September, according to the State Labor Department.

Personal income in the State rose to a seasonally adjusted annual rate of \$74.2 billion in the second quarter of 1968 - representing a gain of 8.6 per cent over the same period a year ago.

The number of wage and salary workers in nonagricultural establishments increased 23,000 to 7,053,000 in October - a high for the month and 114,000 above the year-ago level.

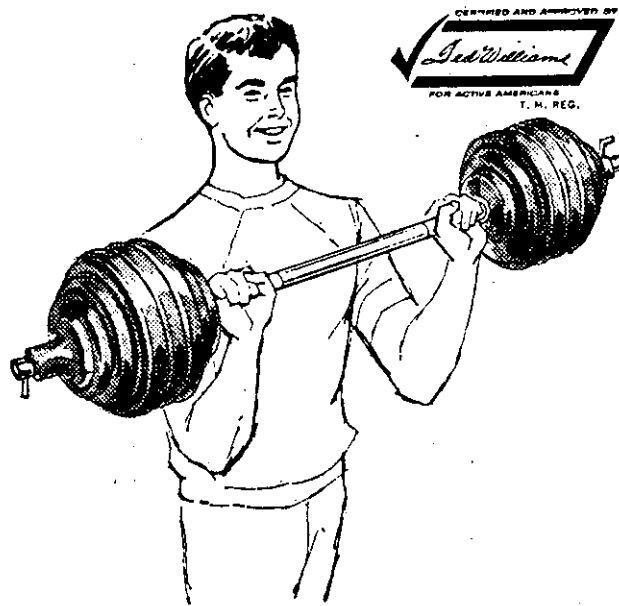
Unemployment in the State continued its downward trend to reach a record low of 245,000 in October. The unemployment rate dropped to 3.0 per cent for the first time, compared with 3.2 in September and 3.5 per cent last year.

The unemployment rate dropped in six of the State's seven major labor market areas from September to October, while five areas reported over-the-year declines.

Construction activity declined slightly in October. At 98, the seasonally adjusted component of the Index dropped one point over the month but remained five points above the year-ago figure.

The value of construction contracts in the State for the 12 months ended in October totaled \$4.6 billion, an increase of 19 per cent from the \$3.8 billion of the previous 12 months, according to the F. W. Dodge Corporation.

The largest gain was recorded in nonresidential building, up



YOU SAVE \$4.00

**TED WILLIAMS 110-LB.
BARBELL SETS**

Regular
\$22.99

\$18⁹⁹

- Weight plates are plastic coated for quiet handling.
- Interlocking design prevents plates from rotating.
- Protective end tips won't mar walls, furniture.

Sears

SEARS, ROEBUCK AND CO.

COLONIE CENTER, 459-8100
AMSTERDAM, V13-1200
SCHENECTADY, EN3-1321

Superior Vacuum Service

HOOVER
Authorized Factory
SALES & SERVICE
Repairs on all makes
Free Pick Up & Delivery
8 Susan La. 489-0905



DAN & BETTY DRYDEN'S SKI SCHOOL

For boys & girls ages 7-15
Saturdays - January thru
March. All day instruction,
practice, fun.

Transportation from Al-
bany and Slingerlands
to ski areas provided.

For information, rates

phone **768-2126** evenings

A CHRISTMAS GIFT



A book
of
Car Wash
Tickets

6 Tickets for \$6.00

**BETHLEHEM
CAR WASH**

Route 9W just South of
Delmar By-Pass



**SCHARFF
BROTHERS**

FUEL OIL SALES

GLENMONT, NEW YORK

Glenmont HO 5-3861

South Bethlehem RO 7-9056

31 per cent, with a smaller increase of 15 per cent in residential building.

Duck News

The State Conservation Department today reminded waterfowl hunters that as waterfowl population levels become more critical, and hunting regulations become more restrictive, hunters must become more concerned — and certainly willing to abide by the rules. There are reasons for these regulation changes each year, even if they may be experimental. Each change represents an effort to learn more about our waterfowl resource and to perpetuate it.

This year in New York we had the situation of very restrictive bag limits during the regular season on both canvasbacks and redheads — just one of either per day or in possession — while during a special 16-day late season on scaup in certain areas,

December 14-29, the limits are 5 per day and 10 in possession. Most waterfowlers understand that the restrictions on the former birds are necessary because of their numerically low numbers as well as the results of recent poor breeding seasons, and that the scaup can be harvested in much greater numbers due to their abundance and healthy breeding status.

The rub in New York comes when we realize that some of the best scaup hunting areas also harbor many "cans" and redheads. This calls for careful identification and discriminating shooting, and is a real test of a good hunter's ability. However, it must be done if special scaup (or other species) seasons are to be continued on areas frequented by other birds.

A further consideration, and the main idea here, is the even greater care that should be taken in shooting. For all these ducks — scaup, canvasback and

redhead — when they are legal, it is strongly recommended that **DRAKES ONLY** be shot. Normally there are more drakes than hens, anyway, and during times of poor production these sex ratios may become even more out of line. This makes for many "surplus" drakes that are not needed for the next year's breeding which may be safely harvested. The removal of these extra birds is undoubtedly of value in reducing competition and strife on the nesting grounds, and at the same time it saves for production those hens which otherwise would have been shot.

The Bureau of Sport Fisheries and Wildlife is carrying on a "spare the hen" campaign on mallards in the two middle Flyways and it is even more applicable to canvasbacks and redheads. The Bureau states: "Of all the mallards killed in the United States last year, 60 percent were drakes. If the percentage increases to 65 this season and the

total mallard kill comes to an expected 3,000,000, as many as 250,000 mallards could be added to next year's flight." Not nearly so many cans and redheads are available to be killed, but if we hold our fire on the hens, a proportional number will be returned to the "duck factories" in Canada next spring.

Conservation officials cannot throw the doors wide open to drake harvesting, and it would be most difficult to declare hens illegal (although some studies are progressing on making drake shooting more attractive). Special seasons on teal, black ducks, scaup, white geese and mallards have indicated that hunters cannot be depended upon to take drakes exclusively. But hunters must learn to act wisely for the future.

Conservation Department game biologists earlier in the season urged hunters to make their one "can" or redhead a drake. The male birds are easier



*To faithful old friends . . . to
cherished new friends . . . to those
whose friendship we hope to
earn, it is a pleasure to extend
Best Wishes of the Season
and may your New Year be one
of Happiness and Prosperity.*

BURRICK FURNITURE

560 Delaware Avenue (Just over Thruway Bridge)
Albany 465-5112

to identify, thus preventing the mistaken shooting of other species. The same appeal is made during the special scap season and with the same intent. Hunters taking only drakes will avoid killing other species illegally and also help their future hunting.

Deer News

Big game hunters took 404 deer from the Moose River Recreation Area during the hunting season which ended December 3, according to a report by the State Conservation Department. The Moose River Area comprises an approximately 100-square mile tract of land in central Hamilton County. This area has been utilized by the Bureau of Game as a deer study and demonstration area since 1931.

The harvest consisted of 131 adult bucks, 165 adult females and 108 fawns. A 5 1/2 year old buck took top honors both for antlers and weight. He sported a handsome 16-point rack and dressed out at 188 pounds. An unusually high doe weight was registered by a 3 1/2-year-old female with a dressed weight of 155 pounds.

Age compositions of the deer examined continue to point to a grossly under-harvested deer population. The rate of removal of animals from the population by hunting is far below the annual increment resulting from reproduction. Hunters are still not harvesting the surplus deer available.

Indices of physical condition further reflect the underharvest. Of the 41 yearling bucks harvested from the area, 21 did not produce legal antlers. This represents a high percentage and reflects a very unhealthy situation for the future of the herd. In addition, some of the other yearling bucks had only one antler that was three inches or longer. Average dressed weights, number of antler points and antler beam diameters among the younger deer are lower than desirable.

It is interesting to note that of the 92 deer trapped and tagged in the Moose River Area during the winter of 1967-68, only nine have been recovered by hunters.

Although this proportion cannot be used to directly determine the rate of removal of deer from the population, it does further illustrate the underharvest that is being experienced.

This year's total of 404 deer represent a decrease of 93 deer from the 1967 record of 497. However, this year's take was 31 above the 1966 mark of 373. The drop in kill from the 1967 mark appears to result largely from the lower success of the hunters during the first period of the season when over 50 percent of the total hunting pressure is experienced.

2 Promotions

Conservation Commissioner R. Stewart Kilborne today announced two key promotions in the Department's Division of Lands and Forests.

Albert J. Woodford, Assistant Director of the Division, has been appointed Director to fill the vacancy created by the retirement of William D. Mulholland.

Promoted to the Assistant Director's post is Victor Glider, who has been General Manager of Forest Parks in the Bureau of Forest Recreation since 1962.

Both appointments become effective on December 19.

Commissioner Kilborne commenting on the two promotions said, "both Al Woodford and Vic Glider have outstanding records of accomplishment in the field of forest management. It is pleasing to me to see both of these men, long time employees of the Department, advance to positions of increased responsibility."

Mr. Woodford, who is 66, is a native of Ithaca, N.Y. and is a graduate of Cornell University where he majored in Forest Management. His first job with the Conservation Department concerned work on blister rust eradication in 1923. He was appointed District Forester in the Herkimer office in 1931 and served there until he was named Assistant Director of the Division of Lands and Forests in 1962. He lives with his wife, Frances, and their daughter at 103 Clermont Street, Albany.

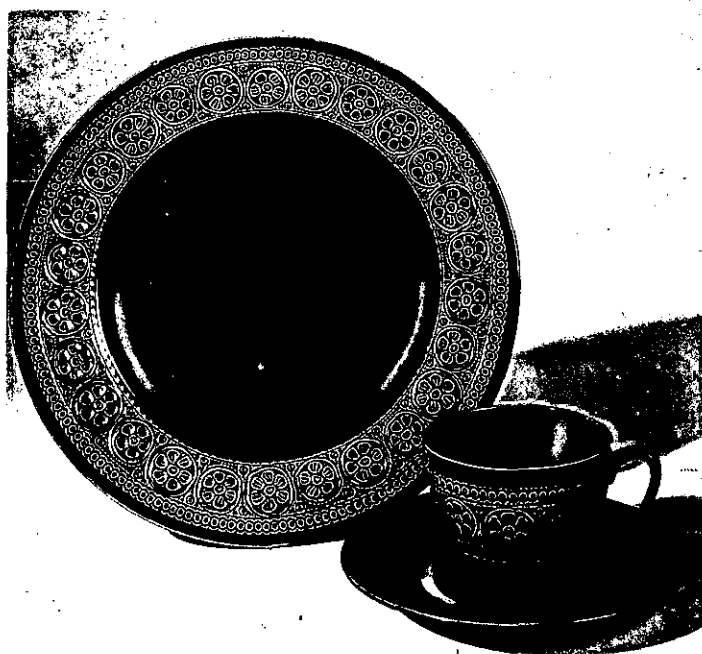
Mr. Glider began his career

with the Conservation Department as a Forest General Foreman in Norwich, N.Y. in 1946. He has come up through the ranks with promotions to the positions of Jr. Forester, Forester, Supervising Forester and 1959 was named Assistant General Manager of Forest Preserve

Parks. In 1962 he was named General Manager.

Mr. Glider is originally from Hartford, Connecticut, and is a graduate of the University of Maine where he majored in Forestry. He served as a Lt. Colonel in the U.S. Army in the European Theatre of Operations during

Here's a fabulous Christmas buy



Italian Ironstone 53-piece Service for 8 - Reg. \$40.
White or Blue

Special \$25.98

- or -

24-piece set - Yellow or Blue Service for 4 -
Reg. \$20.

Special \$12.98

(Limited Quantities)

The Village Shop

Delaware Plaza
Elsmere

Christmas hours:
Evenings -
Mon. thru Fri.

World War II. As Chief Forester in the U.S. Zone in Germany, he prepared and supervised recommendations concerned with forest policy of the German forests.

He lives with his wife, Elizabeth, at 56 Maple Avenue in the Albany suburb of Voorheesville. They are the parents of two children.

Subscribe to The Spotlight

Administrators

Two Delmar residents have advanced to administrative positions at Albany Medical Center Hospital.

Dr. William V. Kinnard has been promoted to the position of Associate Director.

Edward R. Beers has been named Assistant to the Director.

Their promotions, voted by the Board of Governors of the 800-

bed hospital, were announced today by Dr. Thomas L. Hawkins, Jr., hospital Executive Vice-President and Director.

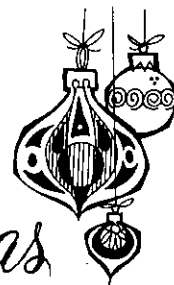
Dr. Kinnard's advancement from Assistant Director reflects enlargement of his responsibilities to include overseeing many of the daily operations of the hospital, including medical and outpatient services.

A graduate of Middlebury College and Albany Medical

College, he received residency training in internal medicine at Albany Medical Center Hospital. He practiced medicine in New England for two years before returning to the Medical Center in 1964 as Director of House Staff Education.

Dr. Kinnard, an Albany native, is active in many civic organizations. He is a member of the executive board of the Fort Orange-Uncle Sam Council, Boy

A Merry Christmas



*To Everyone
from all of us at*

**FOWLER'S LIQUOR
STORE**

ELSMERE-AT-THE-LIGHT
Parking right in front of the store

PHONE 439-2613
We Deliver

*The place to shop for
the one who has Everything!*

Gifts from 33¢ to \$40.00

DON'T FORGET!

We have Gift Certificates!

TO BE OF SERVICE IS OUR PLEASURE
Open 9 A.M. to 10 P.M. till Christmas!

Easy Parking

Gift Wrapping





Edward R. Beers

Dr. William V. Kinnard
Scouts of America, and also

serves on the New York State Advisory Council for Vocational Education.

Dr. Kinnard and his wife have two sons and a daughter. The family lives at 36 Tierney Dr., Delmar.

As Assistant to Dr. Hawkins Mr. Beers will add many aspects of industrial engineering to his present role as data processing engineer. It is anticipated that he will coordinate special management engineering projects.

Mr. Beers joined the administration of Albany Medical Center Hospital in 1966 as Director of Systems Planning and Development. Since his appointment

the Hospital has installed a third generation computer and has begun testing and implementing the business portions of a computer-based Hospital Information System.

A native of Norwich, Mr. Beers received a degree in industrial administration from Yale in 1956. He, his wife, and their two sons live at 18 McGuffey Ln. in Delmar.

Two Promoted

At the regular meeting of the Board of Directors of National Commercial Bank and Trust Company held December 10, 1968,

The loveliest ensemble
of them all!

"Special Guests"

Deluxe Hostess Ensemble

SERVICE
FOR EIGHT

OF TABLEWARE AND APPLIANCES

ALL AT ONE
AMAZING
LOW PRICE!

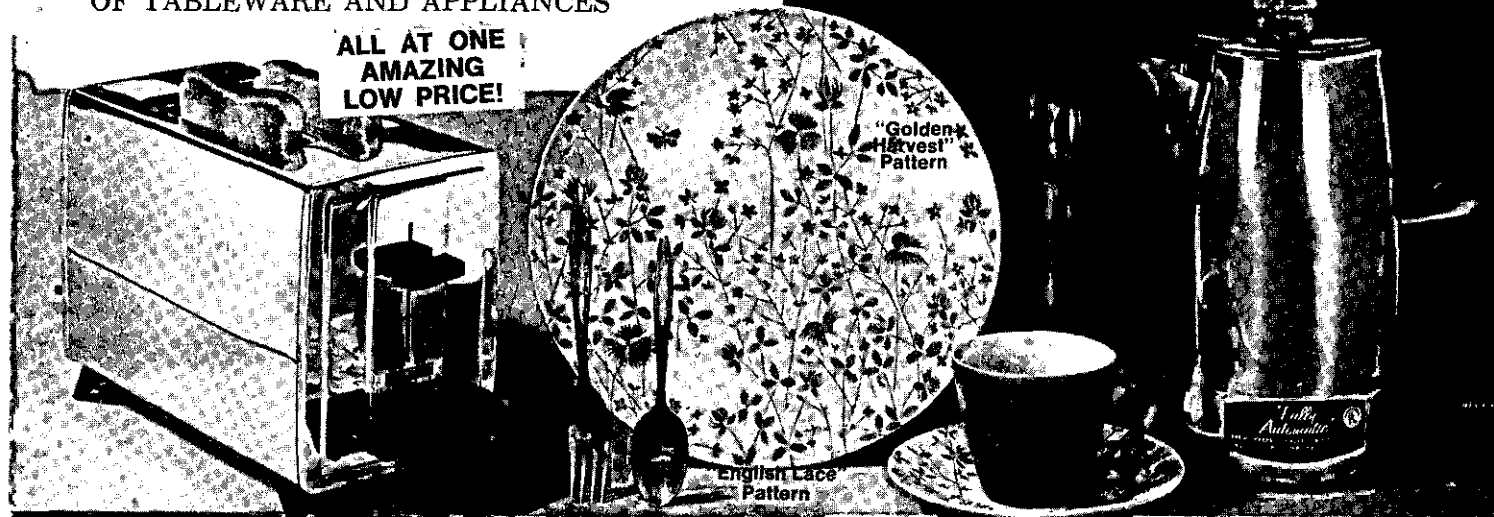
4 TOP MAKERS BROUGHT TOGETHER

Son Chief
Pop-up
Electric
Toaster

Royal
China Co.
45 Pc. Set
of IRONSTONE
Dinnerware

32-Pc. Set
of Stainless
Tableware
by
International
Silver Co.

MIRRO
Automatic
Electric
COFFEE
MAKER



Look at all you get!

Everything is yours for only

\$39⁹⁵

Pay only \$1.00 a week

Everything shown on this page the electrical appliances, the tableware, the dinnerware... ALL OF IT... In all its modern beauty... YOURS at this wonderful low price. What a gift for a newlywed or anniversary or just to delight yourself! Get it ALL and save — save — save! It's tremendous!

- Son Chief 2-slice Pop-up electric toaster with silent thermostat timer
- Mirro 10-cup automatic electric percolator
- 8 dinner plates
- 8 soup plates
- 8 bread & butters
- 8 cups
- 8 saucers
- Vegetable bowl
- Meat platter
- Sugar bowl & cover
- Creamer
- 8 forged, serrated dinner knives
- 8 dinner forks
- 8 teaspoons
- 8 soup spoons

Le-WANDA

Your Trusted Jeweler

Del. Plaza Shopping Center
Delmar-Elsmere, N.Y. 12054
HE 9-9665

OPEN 10 A.M. to 9 P.M.
everyday til Christmas

Merry
Christmas!

Saab Authorized Dealer
NEW SALEM GARAGE
New Salem Route 85
Fred Carl
- NEW AND USED CARS -
Telephone 765-2702



**MERRY
CHRISTMAS**

Call **Luizzi Bros.**
in 1969 for Blacktop Paving
869-6973



we're turning up the *fever*

'69 DODGES

ALBANY DODGE

949 CENTRAL AVE.

ALBANY, N.Y.



Rolling your way with
GOOD WISHES

To all our customers, sincerest wishes for
a Christmas that hums with complete
joy and happiness. And for the
pleasure of having served you, our thanks!

BUD JONES Service

309 Delaware Avenue, Delmar, New York

HE 9-9882



James E. Voorhees, Jr.

James E. Voorhees, Jr. and Peter B. Sprague were promoted to assistant managers, Operations, Lester W. Herzog, Jr., president and chief executive officer, announced today.

Mr. Voorhees is a graduate of Taft School in 1939 and the University of Virginia Class of 1943. He served in World War II in the U.S. Army Infantry from 1943-1946. He progressed from the rank of Private to 1st Lieutenant and served in the Pacific Theatre of Operations. Prior to joining National Commercial Bank and its managerial program of 1967, he had served as sales representative for the Simmons Machine Tool Corporation and Woodard Voss & Hevenor, advertising agency. He is a member of the Phi Gamma Delta fraternity, Albany Country Club and the Fort Orange Club.

Mr. and Mrs. Voorhees are members of the Westminster Presbyterian Church and make their residence at 16 Clarkson Road, Delmar, New York.

Mr. Sprague is a graduate of Averill Park Central School, class of 1957, and Hartwick College, class of 1961. He served in the U.S. Navy from 1961 to 1966 in its Hospital Corps. He joined National Commercial Bank as a management trainee in March of 1966 and has progressed through various operational assignments to his present promotion as assistant manager. He has taught the course of Principles of Bank Operations for the



Peter B. Sprague

American Institute of Banking.

Mr. Sprague is a member of the United Methodist Church of West Sand Lake and makes his home with his parents, Mr. and Mrs. Kimball D. Sprague of West Sand Lake, New York.

In Concert

Helen Jones, daughter of Mr. and Mrs. Kearney L. Jones, 51 Montrose Drive, Delmar, N.Y., was one of thirteen Beloit College students featured in a three-part chamber music concert Wednesday, December 11, in the college chapel. The concert was offered under auspices of the department of music.

Miss Jones, class of 1971, played the bassoon in a Hindemith woodwind quintet.

At Jamaica Inn

Jamaica Inn has created an aura of glamor and romance this year to usher in the New Year.

You can enjoy the New Year's Eve Carnival gaiety and know beforehand exactly how much it will cost, according to Don Wexler, general manager.

Jamaica Inn has set a "fixed price" policy for ringing out the old and ringing in the new - the cost of your reservation will cover everything for the entire evening. This will also include gratuities and taxes.

Merri-makers will have a choice of full course dinners, all they want to drink, continuous

music for dancing, celebrity entertainment, a bottle of champagne on every table at midnight to welcome in the New Year, coffee served all evening, plus Carnival decorations and party favors.

Breakfast "Salute"

The National Savings Bank and the Penn-Central Railroad will be honored at a "Salute to Industry" breakfast sponsored by the Greater Albany Chamber of Commerce on Friday, December 20, at the Thruway Motel, it was announced by George L. Johnson, chamber president.

More than 100 persons, including Albany Mayor Erastus Corning, are expected to attend the 7:45 A.M. affair which will note 100 years of service to the Albany area by the National Savings Bank, and will honor the Penn-Central for its contribution to the area in development of the electronic Selkirk yards, the most advanced railroad freight mecca in the nation.

TEENAGER WINS TITLE



Auburn-haired Dawn Gemay, of Milwaukee, Wisc., has been named "Miss Springmaid" for December as a result of having won the "Springmaid Needs Springmaids" talent search at a local department store, Gimbels-Schusters in Milwaukee. She was selected from hundreds of entrants at department stores throughout the country, and from fourteen finalists. She

will appear in Springmaid's advertising in SEVENTEEN Magazine. Springs Mills, the sponsor, forecasts that the talent search will become a regular event.

HELLO DOLLY!



With its moppy hair, button eyes, and sheepish grin, it's the newest funny face since Raggedy Ann and a delightful way to say Merry Christmas.

It's a DollyGram!

And it works this way: When you decide you want to surprise somebody, just call or visit Western Union and give them the name and address of the lucky party. Then, tell them whether you want this pixie to say, "Merry Christmas," "Happy Birthday," or any of the twenty-three printed messages that fit into her pudgy hands and suit any occasion.

Just had a fight with your sweetheart?

Then you'll want something original. How about scribbling "Stop Grumping" on a blank card?

Not only is DollyGram sendable, she's loveable, too. She's a doll, playmate, pin cushion, Christmas tree ornament, paperweight... you name it, she's it.

Interestingly, in this world of automation, the six inch doll, trimmed with flowers and bows is made entirely by hand.

BOON TO HOMEBUILDERS!

What saves you about \$300 on each home you build, gives you quicker sales, and is good for at least 35 years?

TOO LATE TO CLASSIFY

SCOTCH pine Christmas trees, cut your own, \$2 each. Idyl Acres Campsite, Knox, N.Y. Phone 872-1535.



The answer: utility poles, which carry electricity in overhead distribution systems. They are by far the most economical way of bringing electric lines into your lots, and you can pass

the savings on to your customers—a sure way of spurring sales. Your customers gain another advantage—in the event of a power emergency, overhead lines provide the easiest access for restoration of service.

Utility poles mean that when your customers add major new appliances to their homes and need more electric power, they can get it quickly and easily with a new line to their home... something they'll surely appreciate.

Fall Rug Cleaning

SAVE on ABBEY'S famous "Pile Brush and Shampoo" process in Home, or FREE pick-up and delivery.

ABBHEY

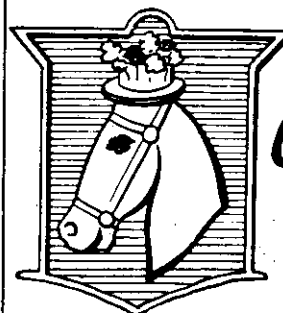
Rug & Carpet Co.
243 Dela. Ave. Delmar
HE 9-9978

25 yrs. in every phase of the Carpet Business



Our Best Wishes for your HAPPINESS

We offer our best wishes for your complete happiness. We hope that this Christmas season will be your most enjoyable. We hope that the coming year will bring you good health, happiness and prosperity. May this success be associated with the service our shop can give you. A very Merry Christmas and a Happy New Year.



THE

Clothes Horse

AT TOLL GATE INC.

1569 New Scotland Road, Slingerlands, N.Y.
Tel. 439-2595

Hal's Crestwood Pharmacy

HAROLD SEITZ, REG. PHARMACIST
CRESTWOOD SHOPPING CENTER - Whitehall Rd. at Picotte Drive
Suggests

how to say "Merry Christmas"



L'OREAL OF PARIS
FROND GELEE
ALOE COSMETICS
REVLON
FABERGE
OLD SPICE
LANVIN
CHANEL
DANA

Sold at All Cosmetic Counters for the Very Same Price
But We Try Harder to Please!

"Service With Dependability" Free Gift Wrapping Free Delivery

Call 438-5354 or 489-4901

Filling your prescription is the most important service we perform.

In order to simplify our book-keeping, Spotlight Classifieds

must be paid for in advance of publication.



THESE ARE FOR
THE BIRDS!

ALBANY MIX BIRD SEED

25 lbs. **2.19**

SUNFLOWER SEEDS

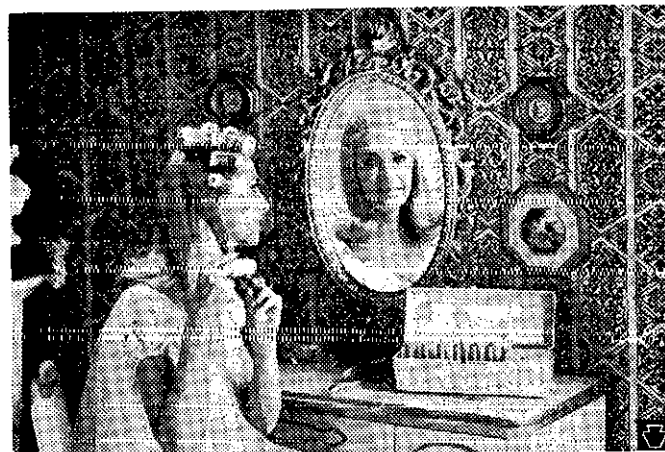
50 lb. bag **7.50**

BIRDFEEDERS (large variety sizes or shapes)
GIVE A "PURPLE MARTIN"
MANSION FOR CHRISTMAS

465-3541

ALBANY AGWAY
642 SOUTH PEARL ST. ALBANY, N.Y.

Mirror, Mirror on the Wall!



Milady's magic mirror shows her the lovely hair-do her new hair curler will produce in just minutes, using dry hair.

Do you know the difference between a hair dryer and a hair curler? When do you use each, and what will one do that the other will not? How does a hair curler work?

These are questions manufacturers are asked each day as the new hair curlers become more and more popular.

A hair dryer is used to dry the hair after a shampoo or a shampoo and set. It dries hair by circulating air around and through it. A few hair dryers can be used for quick touch-ups of the hair-do, but not many models have that capability.

Hair curlers, on the other hand, are designed to refresh and perk-up the hair-do between shampoos. Quick touch-ups or complete sets can be done in just minutes on completely dry hair, but the hair curler can't be used for drying wet hair.

A hair curler, since it can be used with dry hair, can be used to touch-up curls of a wig or wiglet, as well as your own hair, making it even more versatile.

How does the hair curler work? Curlers, or rollers, are heated on posts right in the kit. The rollers usually have a signalling device, such as a red dot that turns black, to indicate when they reach the right temperature, and most units are equipped with thermostats to prevent overheating.

Hair is rolled on the curlers and clipped in place with special clips provided with the set. By the time the last curler is in place, the first

usually will be done and can be taken out. That's how fast a good unit will operate.

What sort of features should a prospective buyer look for in a hair curler? Here are a few suggestions:

Pick a model with an adequate number of rollers and good assortment of sizes, especially the jumbo units demanded in today's hair-dos. Some units offer four sizes in a single kit, jumbo, large, regular and small.

Some models heat all the rollers, up to 20, at one time, others have fewer posts than rollers and a single heating post has to be used more than one time. The models that heat all the rollers at one time are faster and more efficient.

The unit should have thermostatic controls, of course, and should store all parts, rollers, clips and all, right in the case. Portability is another point: pick a unit with a light weight case and a handle for carrying ease.

A final tip: will you use the unit away from home? If so, pick a model with a mirror in the case to make it usable anywhere there is an electrical outlet and a bit of privacy.

A Lady Sunbeam hair curler unit will help any woman to freshen-up her hair-do in a jiffy.

WE REPEAT

The deadline for all Spotlight Classifieds is 4:30 P.M. on Friday before the following Thursday publication. All ads received after the Friday deadline will be scheduled for publication the second Thursday. If our Classified Advertisers will bear this in mind, it will help them to get their ads published when they want them.

Spotlight Classifieds: 439-4949

Mrs. America Prize-Winning Pancakes



Mrs. John E. Cole, Jr., of La Canada, California, was named Mrs. Pancake America after winning the second annual Aunt Jemima Pancake Variety Event at the 1968 Mrs. America Pageant.

All 51 Pageant contestants—one from each state and the District of Columbia—were required to develop an original pancake recipe suitable for serving at a party. Mrs. Cole won the event with her TANGY STRAWBERRY ROLL-UPS.

Topping:

- 1½ cups dairy sour cream
- ½ cup sweetened condensed milk
- 2 tablespoons lemon juice

One 3½-oz. pkg. lemon pudding and pie filling

- 1 cup milk
- 2 eggs

2 teaspoons melted or liquid shortening

Pancakes:

- 1 cup Aunt Jemima Pancake and Waffle Mix

2 cups sweetened sliced strawberries

For topping, combine all ingredients. For pancakes, place mix, pudding and pie filling, milk, eggs and shortening in bowl. Beat with rotary beater until fairly smooth. For each pancake, pour about ¼ cup batter onto hot, lightly greased griddle. Turn when tops are covered with bubbles and edges look cooked. *Makes 4 servings.*

Place strawberries across center of each pancake; roll up. Spoon topping over roll-ups; top each with a strawberry.

Mrs. Cole's recipe, according to event judges, illustrates the tremendous versatility of pancakes, and the suitability of serving pancakes at even the most elegant party.



New Year's Pizzas

by Betty Crocker

How about something really different for New Year's Eve appetites? Like baby-size pizzas, in honor of the Baby New Year. Lots of them, too, in a variety of toppings and passed on a tray that's garnished with crisp relishes and olives. You can make the miniature pizzas ahead, freeze them and then pop in the oven just 15 minutes before the old year ends. While the pizzas bake, you brew up a bowl of sparkling punch for the New Year toasts. And don't forget to set out a pretty plate of holiday fruitcake and your own Christmas cookies. Now, everything's ready in time for a resounding chorus of "Auld Lang Syne." H-a-a-p-p-y New Year!

MINI PIZZAS

- 2 cups Bisquick
- ½ cup water
- ¾ cup chili sauce
- Toppings (below)
- ¾ cup shredded cheese

Heat oven to 425°. Mix Bisquick and water. Knead about 1 minute on lightly floured surface. Roll dough ¼ inch thick into rectangle, 12x9 inches. Cut into 3-inch squares; pinch edges to form

von Bank's
TV SERVICE
HE 4-5887

Quality—Responsibility—Honesty

The ONLY publication to reach
EVERY home in the area: The
Spotlight.

Christmas Wishes

Please accept these
best wishes for
a Merry Christmas.
We attach our thanks!

DELAWARE GARDENS

FLOWER & GIFT SHOP
Four Corners, Delmar
Phone: HE 9-3838

CARPET SALE

ABBEY

Rug & Carpet Co.
243 Dela. Ave. Delmar
HE 9-9978

25 yrs. in every phase of the Carpet Business

CHRISTMAS GIFT IDEAS



Parking
for
200
cars

phone
IV 2-7788

TOM McMANUS

Proprietor

CRESTWOOD Liquors
and Wines

One Block Above Manning Blvd. at Whitehall Rd.

rim. Spread each square with 1 tablespoon sauce; sprinkle each with choice of Toppings and 1 tablespoon cheese. Bake on ungreased baking sheet 10 to 12 minutes. Makes 1 dozen.

Toppings: Sliced ripe, green or stuffed olives, onion, mushrooms, pepperoni, salami, frankfurters, bacon. Diced ham. Or cleaned cooked medium shrimp.

To freeze pizzas: Place unbaked pizzas on ungreased baking sheet in freezer about 30 min-

utes. Remove; wrap pizzas securely in plastic bag. Store in freezer until party time. Remove from bag and bake at 425° 15 minutes.

3 AND 1 SPARKLING PUNCH

- 1 can (6 ounces) frozen grape juice concentrate
- 1 can (6 ounces) frozen orange juice concentrate
- 1 can (6 ounces) frozen lemonade concentrate
- 4 cups water
- 1 quart ginger ale, chilled

Combine all ingredients except ginger ale; chill several hours. At serving time, slowly pour in ginger ale. Serve over cracked ice. If desired, garnish with floating slice of orange with sprig of holly on top. 10 to 12 servings.

**To heal. To learn.
To serve.
The Army
Nurse Corps.**



DANCING
Adults —
25 years or over
Every Saturday night
440 State Street
Schenectady, N.Y.

Music by Stereo
9 to 12 P.M.
Donation \$1 • (refreshments)

NEW GALLERY IS VISITORS' ATTRACTION

Coming to New York? Manhattan's Financial District offers a major center of educational and tourist interest — the big and bright new American Stock Exchange Visitors' Gallery.

The Amex takes visitors on a fascinating tour of the marketplace and its history — from the outdoor trading era at the turn of the century to the streamlined market operations of the 1970's.

There is much to see, and much to learn.

Marketplace Journey

Visitors are whisked by escalator from street level into an authentic version of the Curb Market of 1900. Lifelike models of clerks perched in windows signal to colorfully dressed brokers in a street below.

A multi-screen theater dramatically unfolds the stock market story. As the presentation concludes, the doors open to the sights and sounds of trading.

A spacious observation area places visitors directly over the newly modernized Trading Floor. Audio-visual displays at the balcony rail describe the rush of activity. Attractive Guides — all

In order to simplify our book-keeping, Spotlight Classifieds must be paid for in advance of publication.

BOB PHILLIPS

"Tick of Time" Jeweler
Four Corners
Back of Delmar Meat Market
HE 9-3450

Antique Clock
Charms
Large Collection Watches
1869-1969
Ronson Lighters
Costume Jewelry

Open 10-9, Mon.-Fri.
Sat. 10-5:30

WATCHES, CLOCKS
JEWELRY, SILVERWARE
Lay-a-way

*Season's
Greetings*

**ALTAMONT
MANOR**

STATE ROAD
ALTAMONT, NEW YORK
861-8477

**Vic's
CHRISTMAS
TREES**

Foot of Corning Hill, Glenmont

- Scotch Pine
- Balsam
- Wreaths
(freshly cut)

465-4953

Merry Christmas

THE
Mele's Beauty Salon

Delaware Plaza Shopping Center
Elsmere
Phone HE 9-4411

*Thanks
for your
generous consideration.
Merry Christmas!*

Greetings

**Anne's
Hat Box
Accessories**

4 Corners, Delmar

CHARGE
FIRST TRUST
ACCOUNT

Merry Christmas

The Christmas tree...
May yours be bright
and gay and sur-
rounded with gifts
for and from all of
your loved ones.

VELDHUIS
HAIR STYLISTS
154A DELAWARE AVENUE

THE SPOTLIGHT

fluent in foreign languages — act as hostesses — answering questions, explaining procedures and demonstrating the use of equipment.

Exhibit Area

Colorful, lighted displays in the Exhibit Area feature the Stock Specialist...What's a Share of Stock...the Stock Quotation Table. Exhibits explain how Amex computers and manpower combine to provide an orderly market in the public interest.

Closed-circuit television shows behind-the-scenes Stock Watch operations and how the Amex supplies market information to news media.

There's even an electronic quiz to test your stock market savvy. You may be surprised at how much you've learned!

The American Stock Exchange's Visitors' Gallery, at 78 Trinity Place, is open from 9:45 A.M. to 3:30 P.M. on business days. Admission is free.

PROFILE OF A DRUGGIST

Do you rely on your community pharmacist?

Almost everybody does;

A new survey sponsored by the National Association of Retail Druggists — spokesman for 40,000 independent retail drug stores all across the nation — tells us

just how vitally important the pharmacist is.

He works hard. He spends about 70 hours a week serving the public. His five years' college training earns him no let-up from long hours. Most stores open 6 days a week. Half are open Sundays, too. And the drug store owner is on call 24 hours a day for emergencies.

He's popular. His phone rings 7 million times a year with doctors seeking information on the medicines they prescribe. His doors swing open 85 million times a year to citizens asking questions about the medicines their physicians have prescribed. Millions more find the drug store the ideal source of health aids and grooming sundries.



Emblem of survey sponsor, the National Association of Retail Druggists, which is displayed by leading community pharmacists.



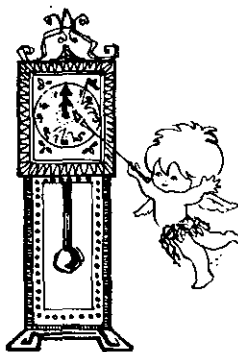
Season's Greetings

KLEERSY BUILDING CORPORATION
and Real Estate Broker

439-4606

439-9769

DELMAR



New Year's Wishes

The clock strikes twelve
and a New Year is here.
Sincere thanks for your
patronage.

SCHRAFFT'S

**RESTAURANT
—AND—
MOTOR INN**

Southern Boulevard (by Thruway exit 23)

465-8811

PRICE GREENLEAF**HOLIDAY TRIM SHOP**

Our store is now completely full of Christmas Decorations and Artificial Trees — one of the largest displays of Decorations and Artificial Trees in the Area.

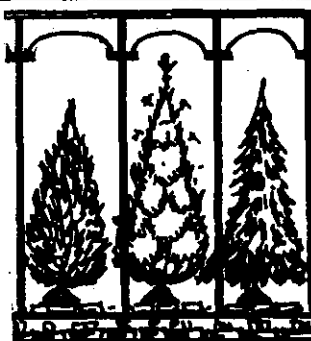
See Our Large Selection of Artificial Trees from 4' to 8'
2-ft. Artificial Tabletop Trees (real full) \$3.25

**FRESH CUT
CHRISTMAS TREES**

Yes, we have KLING for cut trees to stop needle drop
(tree won't burn)



**SCOTCH PINE
BALSAM
PLANTATION GROWN—
sheared,
hand picked**

**MINIATURE LITE SETS**

Clear — Multi
50 Replaceable
Indoor — Outdoor
\$3.79

GE LIGHTED ICE BULBS

29¢ each

**Hours: 8 to 8 — Monday thru Friday
Saturday 8 to 6 — Sunday 10 to 5**



"PRICES SINCE 1831"

14 Booth Rd., Delmar (Off Delaware) Opposite A&P
FREE DELIVERY **PHONE HE 9-9212**

BALLS BAGS SHOES

PHONE

438-6656

BOB DAUBNEY'S

NEW LOCATION

4 Fuller Rd. (Cor. of Fuller & Central Ave.)

• GIFT CERTIFICATES •

Complete stock of leading brand bowling balls. Bags and shoes for men, women and children.

• AMF • BRUNSWICK

• EBONITE • MANHATTAN

Headquarters for Dick Weber & Don Carter Bowling Balls.



* GIFTS & NOVELTIES for bowling — Golfing & Billards.

* Professional Golf Equipment, Brunswick and Capital Billiard Tables.

STORE HOURS: DAILY 10:00 A.M. to 9:00 P.M.

FREE PARKING TO THE REAR OF STORE

SPOTLIGHT CLASSIFIEDS TELL THE WORLD!



R for
a
very
Merry
Christmas



At this wonderful time of year, we prescribe the most merry of Christmases for you, our customers, and your families. And thanks for your patronage... it's most appreciated!

WARNER PHARMACY*Prescription Specialists*

372 DELAWARE AVENUE

DELMAR, NEW YORK

439-3351

He's a solid citizen. A record 97% of all pharmacists vote in elections; 84% do school board and civic work plus minding the drug store; 70% spearhead health drives and distribute pamphlets and health information.

He's appreciated. The survey, conducted by the University of Oklahoma, shows the druggist to be in daily touch with an admiring

public. He answers questions about health, antidotes, proper and improper drug use, medical equipment, convalescent aids, welfare and medical matters, answers questions about pesticides

and pet products. Almost 9 out of 10 pharmacists counsel patients as an important part of their daily work.

The pharmacist provides the public with a staggering total of 17 million professional services per month, the survey shows. That's well over 200 million thoughtful acts per year;

"The new survey tells more about the community pharmacist than has ever been known before," says Willard B. Simmons, executive secretary, N.A.R.D.

You always knew you counted on your pharmacist.

Now you know why.

Raspberry Meringue Cake

When the "holiday baking" bug bites, try a festive new dessert — Raspberry Meringue Cake. A generous spread of raspberry preserves is sandwiched between a moist, "nut-crunchy" cake layer and a golden meringue crown.

You'll agree — Raspberry Meringue Cake, with its "no frosting" top, was meant for the holidays — a time when even though everyone's busy, sweet snacks are the order of the season.

You'll like Raspberry Meringue Cake for its preparation ease. Self-rising flour has baking powder and salt "ready-mixed" into each cupful, so you're spared the job of measuring ingredients and then sifting with the flour. And nutrients needed for sound family health are supplied at no extra cost: the B-vitamins, thiamine, niacin and riboflavin, and the two minerals, iron and calcium.

RASPBERRY MERINGUE CAKE

one 9 x 13-inch cake

½ cup firmly packed light brown sugar	¾ cup milk
¼ cup shortening	½ cup chopped nuts
3 eggs, separated	1 jar (10 oz.) raspberry preserves
1 teaspoon vanilla extract	¼ teaspoon cream of tartar
2 cups enriched self-rising flour*	½ cup sugar

Cream together brown sugar and shortening until light and fluffy. Beat in egg yolks and vanilla. Blend flour into creamed mixture alternately with milk, beginning and ending with flour. Stir in nuts. Spread evenly in greased 9 x 13-inch baking pan. Bake in preheated 350° oven 15 minutes; spread with preserves. Beat egg whites with cream of tartar until frothy. Gradually add sugar, beating until stiff, glossy peaks form. Spread over preserves. Return to oven and bake 20 minutes longer, or until meringue is firm and golden. Cool before cutting.

*Spoon flour into dry measuring cup; level. Do not scoop.

SKI-SLANTS



BY BILL BECK • Former U.S. Olympic Ski Team Coach

It's exciting to hear snow reports at the outset of the season, but before you uncover your skis ask yourself if you're in shape for them. The long summer makes many a skier forget the stamina and body discipline one needs on the slopes.

With snow already covering the northwestern mountains and gradually sweeping down across the rest of the country, enthusiasts have only a few weeks left to (get in a ski attitude).

Skiing is a sport for people of all ages and abilities, and no single conditioning program can work for everyone. Active children can dash right from the football field to the ski slopes without any formal exercise. Adults who regularly swim, play tennis, touch football, ride bikes or engage in other energetic sports also have passed the first gates in their race for physical fitness.

If you — like so many recreational skiers — have been taking it easy since that last summer swim, try to devote as much time as possible getting in shape for the exciting snow season ahead.

Whether you are a hot-shot racer or a timid snow bunny, you will be placing the major strain on your legs and lungs. Today's jogging fad is the greatest exercise for a skier's legs and lungs since the invention of the rope tow. Start your training by alternately jogging and walking a half hour daily. Run until you are winded, walk a while, and then run some more.

After a week or so, try jogging on longer, hilly stretches.

In pre-winter training for the Olympics, we used to run down a grassy hill through a series of poles to limber up the same muscles we used later in the slalom and giant slalom races. You can break up your run with short zig-zag sprints between trees or imaginary slalom gates.

There are many body-building exercises which take only a few minutes a day. Sit ups, push ups, high kicks and body twists are great for strengthening leg and stomach muscles.

Sneak in a few minutes of exercise at the office every day. Run up the stairs two at a time instead of riding the elevator. Try sitting at your desk for a while without a chair. Ten-second isometric exercises are quickly rewarding.

But keep on running. It is the one sure way to increase your stamina no matter which other exercise you prefer.

When you finally get out in the silent white world and feel your skin tingle with the cold and excitement as you look down a steep trail of fresh powder, you will want to schuss down with all the speed you developed last season. It's wise to go slow and easy at first and take rest stops along the way.

Ease the early-season strain on long dormant muscles by using skis which cater to your abilities. I found that a good fiberglass ski — such as Rossignol or Fischer — adjusts easily to the terrain and makes minimum demands on a skier's turning power.

Release bindings are also vital to early season skiing. Set bindings to release before the strain of a fall reaches your leg. Later in the season, when your legs are stronger to stand greater stress, you will want to stay in the bindings longer.

Use bindings which can be made tighter or looser by simply turning a dial for the right adjustment for weight, ability and snow conditions. Marker bindings, for one, have a clearly visible numbered dial which allows you to make precise adjustments so vital to your safety.



Bill Beck

"THE PLACE"

Gun Club Road Altamont
2 BANDS • LITE SHOW • FREE BUSES
"SWINGIN' TEEN DANCE SCENE"

Our Rt. 2 Delmar Bus Stops — Huron & Cherry Ave., 6:50; Delaware & Cherry Ave., (Gulf Sta.), 6:51; Elm Ave. at Beth. Luth. Ch., 6:54; Elm & Rt. 32, 6:56; Elsmere & Fernbank Ave., 6:59; Elsmere & Wellington Ave., 7; Elsmere & Kenwood, 7:01; Delaware & Elsmere, 7:02; Del. & Becker Terr., 7:04; Ken'wd. & Adams (Sporhaven), 7:06; Ken'wd. & Gardner Terr., 7:07; Ken'wd. & Mead'ld. St., 7:08; Ken'wd. & Cherry, 7:09; Toll Gate, 7:12; N. Scot'ld. & Sl'grd. St., 7:14; N. Set'ld. & Held'brg. Pkwy., 7:15; Fisher Blvd., 7:16; Heldervue, 7:17; Stonewell Shop. Cen., 7:19; Maple Rd. & Hilton Rd., 7:21.

Ideal Gift for Dad...

SNOW BLOWERS • SNOWBIRD • TORO

BUY WHERE YOU GET AUTHORIZED
SERVICE AND FACTORY PARTS

TAYLOR & VADNEY

303 CENTRAL AVE.

HE 4-9183

Open Daily—8 A.M. to 9 P.M.



A happy home — that is our wish for you
and your family at this very
special time of year. And for the real
pleasure of serving you, our thanks!

COLONIAL ACRES
SALEM HILLS
CAMPUS CLUB ESTATES



GREETINGS

At this joyous time of year we extend our greetings to our friends, whose confidence we highly value. Thank you.

ELSMERIAN RESTAURANT

Delaware Shopping Plaza - Elsmere



Sock Away Big Savings At Academy Motors



GET A
100% Guaranteed
used car?

- ENGINE
- REAR AXLE
- BRAKE SYSTEM
- TRANSMISSION
- FRONT AXLE ASSEMBLIES
- ELECTRIC SYSTEM

'65 International Scout **\$1895**
2-Wheel Drive, Warn Hubs

'67 Buick Skylark Conv. **\$1995**
V8. Automatic transmission, power steering, power brakes.

Academy Motors, Inc.

TRIOY-SCHEN. RD., LATHAM 785-5581



BACKWOODS BOATS

For fishing backwoods lakes and streams, "cartoppers" are the answer.

These compact, lightweight floating packages provide the only solution to fishing streams too deep for wading and small inaccessible backwoods lakes seldom visited by most anglers.

While most of the emphasis these days is on glamorous large runabouts and cruisers, by no means has the small fishing craft left the outdoors scene. They are available in a wide variety of designs and sizes to fit a multitude of tasks, say the authorities at Mercury outboards, who offer a few pointers in selecting the proper hull.

Since portability is the basic requirement, confine your search to boats weighing under 120 pounds. You'll be doing plenty of lifting and carrying, so the lighter the better. Aluminum construction seems to be the best all-around choice, but strip-canvas designs that will accommodate an outboard and

certain fiberglass hulls are suitable.

Canoes, the original backcountry craft, are natural cartoppers. Easy to handle, they're ideal for fishing rivers or small lakes. Aluminum canoes are especially light, won't soak up additional pounds and take a beating. Choose a square stern model, hitch on a small outboard, and you seldom have to pick up a paddle.

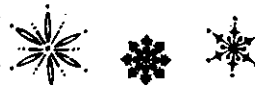
Small skiffs are handy, too, and they offer more freedom of movement by occupants. The flat-bottom, square-end John boats are the best fishing platforms in calm waters. However, they can be tough to maneuver when a strong wind starts kicking up whitecaps.

Select your fishing rig with an eye toward the type of waters you'll be fishing most often and keep it light, advise the Mercury lads, then start looking for those lonely spots bypassed by the less adventurous. You'll discover a lot of action that's reserved exclusively for cartoppers.

TOO LATE TO CLASSIFY

MERCHANDISE FOR SALE

REFRIGERATOR (Hotpoint) \$15.00; Whirlpool Washing Machine \$100.00; "Hand-wick" Gas Oven \$35.00; 2 children's bookcases; 6 oak bookcases with leaded glass mirrors; twin beds; chest of drawers; sick tray, desk lamps; picnic tables; Turkoman oriental rugs; picture frames; stuffed chair; antique iron and-irons; hose; extension com.; hand lawn mower; kitchen table. 439-9093.



Plant Engineering Operations

EARN WHILE YOU LEARN

Excellent opportunity to learn plant operations technology in a modern industrial environment. Broad gauge training in electrical/mechanical/instrumentation areas will be provided to qualified applicants.

You don't need college training or related experience if you have the aptitude for technical work and are a high school graduate. We will provide extensive on job training and further training with college level courses through tuition refund.

For More Information, Call or Write:

PERSONNEL OFFICE
POLYMER PRODUCTS OPERATION
LONG LANE, SELKIRK, NEW YORK
PHONE 439-9371

GENERAL  ELECTRIC

AN EQUAL OPPORTUNITY EMPLOYER

HE 9-4949

SPOTLIGHT CLASSIFIEDS

HE 9-4949

ALTERATIONS & SEWING

HOLIDAY clothes too long? Phone 438-4157, Guiderland, for prompt alterations on coats, suits, dresses. 4t12

ALUMINUM SIDING

TRI-TOWNE Aluminum. A complete line of maintenance-free products for your home. 439-4158. tf

APPLES

BEST PLACE TO BUY

Dressed Fowls - Fresh Brown Eggs
Delicious
MacIntosh & Spy
Apples
HASWELL FARMS
Feura Bush Rd. at Murray Ave.
439-3893 Delmar

APPLIANCES

Bob Sowers' DELMAR APPLIANCE

Complete Line of
RCA Victor - Whirlpool
Sales & Service
239 Delaware Ave., Delmar
Phone 439-6723

CARPENTRY

PLAYROOMS, complete kitchens, counter tops, floors, ceilings, painting, roofing, furniture repaired, shelving, shopwork. 439-5342. 4t1226
E. J. KLEIN, general contractor, remodeling, alterations, finished basements, game rooms, suspended ceilings, tile floors, paneling, sheet rocking, garage doors installed and repaired, porches built and repaired. NO JOB TOO SMALL. Member, Home Bldrs. Assn. Call 861-8452 after 6 P.M. 4t1219

CLEANING SERVICE

LOCHMOOR Window Cleaning Co. Resident and office maintenance, complete. IV 9-0121 or 489-2474. tf
C&M Cleaning Service, residential, commercial, windows, floors. Call before 9 or after 3 P.M. 861-6523. 4t1226

DRAPERIES

DRAPERIES - custom made, home service, fabric selection, estimates, bedroom ensembles. Barbara Schoonmaker. 872-0897. 4t1226

DRIVER TRAINING

ALL ALBANY AUTO ACADEMY

65 McAlpin Street, Albany
Beginners - Intermediates
Brush-Up
CARS AVAILABLE FOR
ROAD TESTS
Standard & Automatic
Call HO 2-1309

FIREPLACE WOOD

CHOICE hardwood, white birch logs, also kindling. 439-2072 or 768-2158. tf
HARD, seasoned fireplace wood. Call Albany IV 2-5231. tf
FIREWOOD - Seasoned fireplace wood. Delivered or picked-up. The Garden Shoppe. 439-1835. tf
FIREWOOD, hardwood, race cord. Delivered. 768-2431. 4t1219
FIREWOOD, hard, split, delivered, face cord \$13. 872-0637. 4t1226
BEN BECKER'S Forest, fireplace wood, for delivery, call IV 2-0418. 4t19

FURNITURE REFINISHING

REPAIRING, refinishing furniture, antique restored. French, 838 Broadway, Rensselaer. HE 4-0633. tf
ANTIQUE and contemporary restored; custom cabinets and Hi-Fi installations. 872-1908. 4t12

INSTRUCTIONS

CERAMICS BY LU'S

Instructions day or evening.
GREENWARE, PAINTS &
SUPPLIES
Delaware Tnpke., Clarksville
768-2872

FOLK guitar lessons, call Joan Mullen. 439-3701. 1t130

BEGINNING folk guitar classes - classes now forming, also individual instruction. Bill Little. 439-5710. 4t19

JEWELRY

EXPERT WATCH AND JEWELRY repairs. Diamond setting, engraving wedding and engagement rings, reasonable. Your trusted jeweler, LeWanda, Delaware Plaza Shopping Center. HE 9-9685. tf

LANDSCAPING

COMPLETE Lawn Care - Fertilizing and weed control applications should be done now for best results. Shrubs trimmed and shaped. James Many. 439-3307. tf

LIQUORS & WINES

SLINGERLANDS PACKAGE STORE. Complete line. Deliveries. Discount on case lots. Party consultants. Open 10 A.M. to 10 P.M. Phone HE 9-4581. tf
FOWLER'S Liquor Store, 257 Delaware Avenue, Delmar. Complete line of wines and liquors. Instant delivery. 439-2613. tf
GLENMONT Liquor Store, Corner 9-W & Rt. 32. Holiday Specials: complete line of liquors and wines. 2t1226

MASON WORK

EXPERIENCED, all types masonry, new or repairs. Guidara. HE 9-1763 evenings. tf

MOVERS

D. L. MOVERS. Local and long distance moving. Reasonable rates. No job too small or too large. Dick Leonardo. HE 9-5210. tf

MIMEOGRAPHING SERVICE

REASONABLE RATES - Mimeographing - stencils cut - addressing - mailing, Delmar, N.Y. 439-3383. tf

ORIENTAL RUGS

OVER 2000 new & used orientals. Sizes from 1'x2' to 15'x30'. Room sizes from \$195.00. Complete Line of Broadloom carpetings. Washing & repairing of oriental rugs by Native expert. Kermani of Schenectady, Stop 3, Albany-Schenectady, N.Y. EX 3-6884 or IV 2-0457. tf

PAINTING & PAPERHANGING

INTERIOR, exterior painting. Free estimates. Guaranteed. Insured. Jim Vogel. HE 9-9718. tf
INTERIOR and exterior painting, also paperhanging. Frank Salisbury. Days HE 9-5527; nights HE 9-1355. tf

INTERIOR, exterior painting and paperhanging, also alterations (top quality) free estimates. Established 1942, James Lenney. HO 2-2328. tf

EXPERT interior painting and decorating, pickling. Furniture refinishing, carpentry. HE 9-5342. 4t1226

DON VOGEL, exterior - interior painting, paperhanging, fully insured. HE 4-8370 - IV 9-7914. 4t1226

PERMANENT WAVING

SPECIALIZING in Breck, Realistic, Ravette and Caryl Richards permanents, hair tinting and bleaching. MELE'S BEAUTY SALON, Plaza Shopping Center. HE 9-4411. tf

PLUMBING & HEATING

EXPERT workmanship in all phases of plumbing and heating. Fully insured. 24 hour service. No job too small. Call B.P. Wood, Plumbing & Heating. 439-9454. tf

SCISSORS SHARPENED

SCISSORS sharpened, 6 pairs med. size, \$2.00 also pink shears, saws, hair clippers, lawnmowers, knives, chain saws. Called for and delivered. HE 9-5156 (if no answer - Call HE 9-3893). tf

SEPTIC TANK SERVICE


NORMANSKILL Septic Tank Cleaners. We install dry wells, septic tanks, drain fields. 787-9287. tf
DELMAR SANITARY CLEANERS Service Tri-Village area over 20 years. HE 9-1412. tf

SLIPCOVERS

SLIPCOVERS pin fitted, self welt. Free estimates after 3 P.M. Rita Hennemann. 872-0070. 4t19

USE CHRISTMAS SEALS

We'll make your motor sing



- * Engine Tune-up
- * Front End Alignment
- * Automatic Transmission Service
- * Modern Equipment
- * Skilled Mechanics

BAILEY'S GARAGE

Phone Delmar HE 9-1446
Oakwood Rd., Elsmere

SNOWPLOWING

SNOWPLOWING — Delmar, Unionville, Feura Bush area. Reasonable rates by job or season. Hank Mead. 439-3638. 4t19

TREE SERVICE

HERM'S Tree Service. Call IV 2-5231. 4t1226

BROWNIE'S Tree Service. Tree stump removal. Insured, free estimates. IV 2-5031. 4t12

WATCH REPAIRING

EXPERT WATCH AND JEWELRY repairs. Diamond setting, engraving wedding and engagement rings, reasonable. Your trusted jeweler, LeWanda, Delaware Plaza Shopping Center. HE 9-9665. tf

WATCH repairing, expert workmanship. All work guaranteed. Also engraving, diamond setting, watch bands. Harry L. Brown, Jeweler, 4 Corners, Delmar. 439-2718. tf

MERCHANDISE FOR SALE

ALUMINUM siding, windows, doors, and gutters. Mike Fleming's Tri-Towne Aluminum. 439-4158. tf

D.L. MOVERS — furniture & appliance moving (small or large). HE 9-5210. tf

PIANOS — MASON & HAMLIN, Knabe, Fischer, Weber and Stark, also fine selections of slightly used pianos. Call A. Andrew Gigliotti. HO 3-5223. tf

EATON REAL ESTATE

Always Prompt and Courteous Service,

Plus

Extra services, which make transfer of homes painless for the owner.

We have: deluxe offices for rent — we need: more Delmar homes for sale, more apartments for rent.

278 Delaware Avenue
Delmar

439-1101 — 439-3904

150 Pianos — organs and service at Brown's, Central Avenue. 459-5230. tf

FURNITURE

Our low-cost operation policy enables us to bring you **BIG SAVINGS** on **NEW** furniture, rugs, bedding, drapes.

BURRICK FURNITURE

560 Delaware Ave., Albany
Just across the Thruway Bridge in Albany 465-5112

DOT'S EXCHANGE

Famous Maker Boots to 50% SAVINGS

Youth, Men's PackBoots — Tingley Rubbers — New and next-to-new family clothing

HOURS:

Tues. thru Sat. — 10 a.m. - 5 p.m.
Fri. eve. 7-9 Closed Mon.

241 Delaware Ave., Elsmere

MARIANI'S XMAS TREE CENTER, 159 Fuller Road, Albany, double balsam, scotch pine, spruce trees, boughs, wreaths, roping. Discount to organizations, also balled and potted nursery trees. 438-0166 or IV 9-7013. 3t1219

CHRISTMAS TREES: \$5 each. Scotch pine and Norway spruce.

HAVE YOU VISITED

Voorheesville

3 & 4 Bedroom
CONTEMPORARIES & COLONIALS

from **\$21,490**

"Community Living at Its Finest"

For Appointment Call
REINER REALTY
HO 5-4565

These are growing trees and are not cut until you take them home. Also fresh boughs. Wear low heeled shoes and rubbers or overshoes. Saturdays and Sundays only. On Bender Lane between the By-pass and 9-W. The Vanderwoods — 482-4343. 3t1219

CHRISTMAS trees — Scotch pine, home grown sheared trees, \$1 a ft. Cut your own. Robert W. Dunn, Star Road, R.D., Ravena, N.Y. 767-3431. 3t1219

WE will have fresh cut balsam, spruce, scotch pine trees, also wreaths and cemetery blankets. Joe Peragine. Ravena. 768-2185. 3t1219

CHRISTMAS trees, Scotch pine, white spruce, Douglas fir, \$2.50 up. Scotch Hill Acres, Feura Bush, N.Y., telephone 439-9457 (off Feura Bush and Unionville Road). 2t1219

ANTIQUES FOR CHRISTMAS

From Jeanne Van Hoesen's
"Sign of the Coffee Mill"

We now have in stock over 100 lamps, 35 blanket chests, over 100 pieces of pine furniture, 10 marble top tables, Chinese teakwood tables, French furniture, large stock of cut glass and silver, candleabras in gold, brass, china, sterling and victoria plate, oil paintings and thousands of other items in glass, china, copper, brass, primitive. All in mint condition. Open Sundays, evenings by appointment only. 439-1021. 67 Adams Pl., Delmar. Coffee served.

WE will have fresh cut balsam, spruce, scotch pine trees, also wreaths and cemetery blankets. Joe Peragine. Coeymans Hollow. 768-2185 and 768-2158. 2t1219

CARL'S COINS, VFW HALL, 404 Delaware Avenue, Delmar. Open Dec. 14, 11 A.M. to 5 P.M., Dec. 28, 11 A.M. to 5 P.M. BUY, SELL, TRADE U.S. Coins and Stamps. 3t1226

TOY TRAINS, Lionel and American Flyer. Also collectors items. 439-1445 after 6. 2t1219

BOOKS — Mint condition artbooks, leather-bound, sets — ideal for Christmas gifts. Also children's books, history, texts. At secondhand prices. BRYN MAWR BOOK-SHOP, Arcadia Avenue at Western, T-WTH from 10:30 to 4:30, Sat. 9:30 to 12:30. Open Thursday nights to 9 P.M. 2t1219

LOFTY pile, free from soil is the carpet cleaned with Blue Lustr. Rent electric shampooer \$1. Hilchie's American Hardware, 235 Delaware Avenue, Delmar.

SNOW tires: 7:50 x 14, \$12 the pair. Phone 439-2710.

SKI boots, men's 11M, Kastigen "Golden K" lace boots used one season, \$45 new, \$25. 439-3223 evenings.

SPOTS before your eyes — on your new carpet — remove them with Blue Lustr. Rent electric shampooer \$1. Adams Hardware, 380 Delaware Avenue, Delmar.

SOFA, burgundy, excellent condition. 439-4186 after 6.

JOHNNIE style racoon coat, excellent condition. HO 3-8700.

PIANO for quick sale. 439-9093.

DINING room suite, mahogany — buffet china closet, table and 5 chairs, good condition \$60; child's chifferobe in hard-rock maple, \$15; Slingerlands drum set, perfect. \$150. 768-2022.

CHRISTMAS trees, sheared scotch pine, free boughs with purchase. France's Farm, off route 32, 8 miles south of Feura Bush. PO 8-2373.

PIANO, baby grand Kroeger, walnut, 54 x 54, good condition, \$300. 459-1626.

CB SET, Comstat 19, new inside aerial, turntable, \$50. 765-2221.

ELECTRIC guitar, amplifier, microphone, good condition, \$50. Call 439-6913.

HO TRAIN set, 2 engines, 9 cars, table, accessories. 439-3835.

POOL table, 8' x 4', good condition, \$50. 439-5518.

TYPEWRITER, Royal, 18" carriage, special small gothic type, \$35; Ampro 2-track 3/4" mono tape recorder, needs work, make offer. 439-5710.

AO 500 W slide projector, 2 x 2, \$30; projection screen, Da-Lite, 50 x 50, \$20; teaching machine, 3 courses (English, spelling rules, Spanish, Hebrew) \$10; Victrola type record player, with records, \$5. 439-5710.

CAMERA, 35MM topcon single lens reflex with normal wide angle, telephoto lens, \$120. 439-5710.

BEAUTIFUL fruitwood dining area table, 2 leaves. Hand made braided and hooked rugs, other miscellaneous furniture small items. 439-1824.

SKATES, girl's shoe skates, 2 pair. Call Sharon Carahan. 436-9119.

US ROYAL tubeless tire: 8:50 x 13, 4 ply (one). 439-3372.

BOYS and girl's 26" bicycles, disappearing stairway. RO 7-9608.

FRIGIDAIRE range, de Luxe Model, excellent condition, \$60. HE 9-9047.

ELECTRIC combination broiler and oven, 6 months old, \$13. 482-2373.

RCA Hi-Fi radio, cherry console, excellent. 439-2422.

SKIS, 6' 2", with cubco bindings, size 10. Man's ski boots, \$25. 439-5703.



"We Are Known

By Our Good Listings"



Residential & Commercial Sales & Leasing Area Code 518
1525 Western Ave. Albany, N.Y. (Zip 12203)
Adjoining Stuyvesant Plaza & Interstate 87 489-3211

Delmar's Leading Real Estate Broker

Our 48th Year
264 Delaware Ave., Delmar
439-9921
Multiple Listing Service

AUTOMOTIVE FOR SALE

It goes places other small cars shouldn't go.



SAAB

Authorized Dealer
NEW SALEM GARAGE
New Salem Route 85
DeWitt and Fred Carl
- NEW AND USED CARS -
Telephone RO 5-2702

1965 Ford 500 convertible V8, automatic, A1 condition, good rubber, \$1295. 463-2434.
1963 Ford 4-door 6 cylinder, five new tires, good condition, \$300. 439-6904.

PETS

CHRISTMAS poodle puppy, 4 months, AKC, shots, female, white with apricot. 756-2384.

BEAGLE PUPPIES (Purebred, "small", quiet breed), predominately black, with white and tan markings. Whelped Oct. 30. With papers. Males: \$35, females: \$30. 439-2862.

COCKER SPANIEL puppies, ped. AKC. Ready for Christmas. Phone 439-3271.

KITTENS free to good homes, 6 weeks old and ready for Christmas giving. 439-5437.

AKC miniature poodle puppies, shots, exceptional temperament and health, home raised. Must be seen. 434-0838.

FOUND: black male, brown markings, size of Delmar, vicinity Clarksville. 768-2265.

MOTORCYCLES

HONDA - YAMAHA, new '68 models, best deals - save money, factory trained mechanics - 1 day serv. JAF Motors, Inc., 1371 B'way, Schenectady, EX 3-2621.

REAL ESTATE FOR SALE

A.A.A. Albany Area Agency real estate Member of Board of Realtors. Multiple Listing Service, and State Appraisal Society. Listings wanted for out-of-town buyers. Call 439-9333 Delmar Office, 228 Delaware Ave. or 489-5591.

Subscribe to The Spotlight

AUTHORIZED

Volkswagen Dealer

COOLEY

MOTORS CORP.

12 Minutes from Delmar
on U.S. 4 at Defreesville
Guaranteed Used Cars
Service While You Wait 283-2902
Troy-East Greenbush Road

REAL ESTATE FOR RENT

DELMAR - Prime business location, new bldg. 600 sq. feet. 439-9356.

FARM house for rent, students or young couple, \$50 month. PO 8-2373.

ELSMERE, duplex, 3-bedrooms, garage, on-bus line, near shopping center, Feb. 1st. 439-1738.

DELMAR - flat, 3 bedrooms, living room, kitchen, bath. HE 9-8919.

HELP WANTED

SECRETARIAL work, typing, filing, etc. full or part time. Call before 5, 785-9840, after 5 P.M., 355-8534.

ADMINISTRATOR FOR

a small Episcopal Nursery home for infants and young children located in Albany. Registered Nurse with administrator experience required. Live in preferred. For further information, apply Box M, 27 Hackett Blvd., Albany

A FULL time Council Registrar for troop registration and day camping. Ability to type and work with figures. Call Hudson Valley Girl Scout Council, Inc. 439-4936.

MALE OR FEMALE research assistant needed for Delmar planning firm, minimum 3-day week. Bachelor's degree required plus ability to read maps, make simple calculations and do library research. Send resume to Spotlight, Box C, Delmar.

SITUATIONS WANTED

TRI-STATE ACCOUNTING SERVICE

Specializing in Accounting and related problems for small businesses. Telephone CE 7-0766.

LICENSED practical nurse available private duty, prefer 8 to 4 or 9 to 5, has own transportation, excellent reference. Phone UN 9-9138 between 9 and 12 A.M.

SUBSCRIBE TO

THE SPOTLIGHT

Your Cadillac and Olds Dealer

HEDLEY
Good Selection
Of Value-Rated
Used Cars
HEDLEY

CADILLAC & OLDS, INC.

515 RIVER ST.
TROY AS2-4220

CLASSIFIED AD POLICY

Classified Ads in the Spotlight must be paid for when the ad is submitted. We must enforce this policy strictly. Our rates are too small to permit invoicing and bookkeeping on these accounts. Please do not ask us to make any exception to this rule.

Your copy and remittance must reach us on Friday before 4:30 P.M. in order to appear in the following Thursday issue.

Subscribe to The Spotlight

★SEASON'S
GREETINGS



Don't wait until the last minute to get that haircut for the Holidays. Come ahead of the last minute rush. You'll find that we'll give you that "little extra" service that means so much - plus - first class tonsorial work - always!

2 shops - 10 excellent barbers to serve you - No waiting!

Plaza Barber Shop

Vincent Spinoso

4 Corners Barber Shop

Tom Spinoso

CLASSIFIED ADVERTISING RATES

10¢ per word for each insertion;
\$1 minimum.
CALL HE 9-4949
Write, or stop in at our
convenient office:
154 Delaware Avenue

SUNDAY NEW YORK TIMES FOR HOME DELIVERY

Phone after 3 P.M.
439-4711



Happy
Holiday

At Christmastide, our warmest and best wishes . . . and our thanks for the favor of choosing us to serve you.

**BAILEY'S
GARAGE**

Phone Delmar HE 9-1446
Oakwood Rd., Elmsere



Gladness in your heart
and a smile on your face, warm
friends around you, gifts and
good things to enjoy . . . that's
our Christmas wish for you.

**WILLIAMS BROS.
BUILDERS**

FRANK & GUS WILLIAMS
DELMAR, N.Y.





Little Folks

DELAWARE PLAZA, DELMAR
OPEN EVERY NITE TILL 9:00
INCLUDING SATURDAY

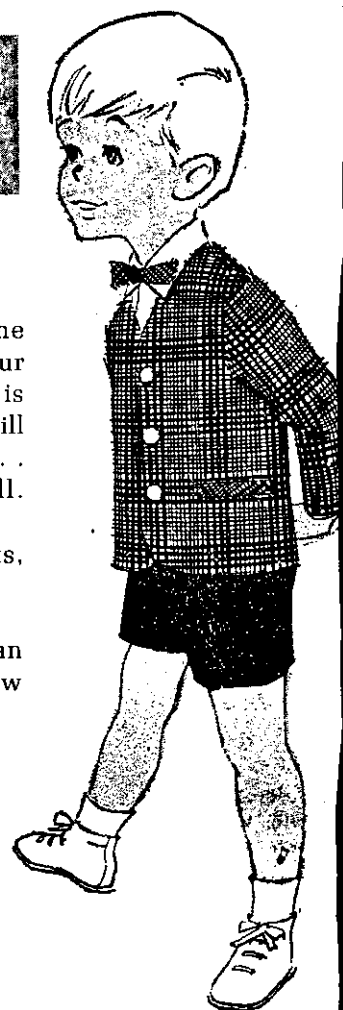
We're in your neighborhood where the shopping is easy. The sales clerks are your neighbors & your friends and the selection is bountiful. A gift from the Little Folks Shop will show you care enough to give the very best . . . and we stand behind every item we sell.

For infants to career and boys to size 12. Shoes, boots, slippers, too.

Of course you may use our convenient layaway plan or open a First Trust Charge Account in just a few minutes.



Fit Is Our Main Concern



Joseph C. Delmar Public Library
Hawthorn Ave.,
Delmar, N.Y. 12054

