

Bethlehem Public Library

The Spotlight

Controlled Circulation Publication

20¢

NOVEMBER 22, 1973
VOL. XVIII, NO. 47



See Page 31

What's the CHRISTMAS GIFT your whole family will love you all year for?



The COSMOS
Model FS505
21" diagonal picture

**EXCITING
GIFT IDEAS
FOR YOUR FAMILY...
AND FOR EVERYONE
ON YOUR SHOPPING LIST**

*Give RCA... "The Gift That
Keeps On Giving"*

XL-100 BY RCA

In a handy, compact table model with its own rollabout stand.

Here's the answer to your shopping problems for the whole family. Give them the ultimate in color viewing enjoyment—XL-100, RCA's 100% Solid State AccuColor. The Cosmos incorporates the luxury features of the big consoles into a compact table model. Circuitry designed for extended life. RCA's finest color picture tube with black matrix design. An automatic tuning system that makes tuning a snap. And, with matching stand, you get the added convenience of easy room-to-room relocation.



AccuMatic color monitor locks in a normal range of color.



12 plug-in AccuCircuit modules make for easy service.

HOURS
Daily 10 to 6, Tues.,
Wed., Fri.
Daily 10 to 9, Mon.
& Thurs.
9:30 to 5:00 Saturday

**COLOR TV PRICES
START AT**

\$268

BOB
Sowers'

DELMAR APPLIANCES

239 Delaware Avenue, Delmar / 439-6723

Free Delivery — Free Normal Installation
Regular Delmar Appliance Guarantee
Regular Factory Warranty
No Down Payment — Up to 36 Months to Pay

Spotlight

is published every Thursday by Spotlight, Inc., 154 Delaware Ave., Delmar, N.Y. 12054. Robert G. King, Publisher; LeVere L. Fuller, Editor. (Controlled Circulation, Postage Paid at Delmar, N.Y.) Deadline for news is Thursday afternoon, one week preceding publication; deadline for display and classified advertisements is Friday afternoon.



WEEKEND SPECIAL

7½ FT. ARTIFICIAL TREE

59.95 SALE 49.95

(folds up)

Heavy Branched — Beautiful Shaped Tree

Miniature lite sets — outdoor and in, if one goes out the rest stay lit. All separate color sets.

*Uses very little electricity

CEMETERY WREATHS • FRESH CUT GREENS • DECORATING SUPPLIES

- CANDLES
- GARLAND
- RIBBON
- VELVET

PRICE GREENLEAF

(The Christmas Store)

14 BOOTH RD., DELMAR (NEXT TO A & P)
Off Delaware Ave. • 439-9212

- WRAPPING PAPER

SPECTACULAR SOFA SALE

\$100 Off every love seat IN STOCK

\$150 Off every sofa IN STOCK

IMMEDIATE DELIVERY TO TRI-VILLAGE AREA (FREE OF COURSE.
A SMALL CHARGE ELSEWHERE)

**BETTER HURRY. THEY WON'T LAST LONG WITH
CHRISTMAS COMING.**

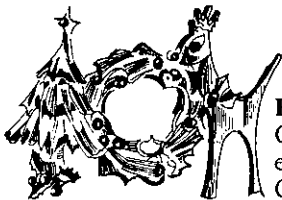
The Village Store

4 CORNERS, DELMAR

Pin Interest



albany savings bank **Christmas Club**



Pin Interest means an extra gift for this Christmas and extra money for next. It's an exclusive with Albany Savings Bank's Christmas Club, when you open an account in any amount.

The **pin** is for this Christmas. Choose any one of these three charming fashion accents for your Holiday outfits.

The **interest** means extra money for Christmas '74. You'll receive 5-1/4% compounded daily for an effective annual yield of 5.47% on completed clubs.

Pin...interest...PINTEREST! Something nice for this Christmas...and for next.



ALBANY: Downtown Office: 20 North Pearl Street/Pine Hills Office: 501 Western Avenue **COLONIE:** Colonie Office: 232 Colonie Center
GLENS FALLS: Glens Falls Office: 37 Bay Street/Queensbury Office: Rte 9, at Aviation Rd. **JOHNSTOWN:** Johnstown Office: 17 South Market Street
Schenectady Office State St. at Clinton

Spotlight CALENDAR

ABOUT THE CALENDAR

The information printed in this column is a FREE service to **Spotlight** readers. We neither charge nor receive any fee for publicizing these events. It is for this reason that we ask those who send in information to make sure that it is complete; we **cannot** (repeat: **CANNOT**) make weekly changes in running announcements.

Because the Calendar condenses the coming event in capsule form, it has become one of the most widely-read weekly **Spotlight** features. It was so designed to allow for more space for additional features. Therefore, organizations should **not** expect to find a duplication of facts in another place. If we were to run all of the events **twice**, we'd be cutting down on our available space and thereby defeat the whole concept.

Tri-Village FISH — Call 439-3578 for voluntary service — 24 hours a day the year 'round — offered by residents of Delmar, Elsmere and Slingerlands to their neighbors in need of help in any emergency.

Bethlehem Jaycees meet first and third Wednesdays of the month, 8 P.M., Center Inn, 9W, Glenmont.

Welcome Wagon — Newcomers and mothers of new babies call 785-9640, Mon. thru Sat., 8:30 A.M.-6:00 P.M. so you may have a Welcome Wagon call.

Bethlehem Memorial Auxiliary to Post #3185, Veterans of Foreign Wars, meets the third Monday of every month, at the Post Rooms, 404 Delaware Ave., Delmar.

Bethlehem Youth Employment Service, 114 Adams Street, Delmar. Open Monday-Friday, 1-4:30 P.M. Telephone 439-2238.

The Albany County Pistol Club, Winne Place and Maewin Drive, Delmar, welcomes guests at its indoor pistol range every Tuesday at 8 P.M. Information: Dave Herbach, 439-4372 or Tom Corrigan, 439-3301.

Monarch Club of Albany meets every Tuesday night at 6 at the Center Inn, Glenmont.

Rotary Club of Delmar meets every Tuesday night at 6:15 at Schrafft's.

Give and Take Shop, staffed and stocked by residents of Delmar, clothing for all occasions, all ages, all sizes, available to everyone. Basement St. Thomas Apostle Church & Rectory), Mon. 9:30-11:30 A.M., Tues. 1-3 P.M., Sat. 10 A.M.-12 Noon.

Every Thursday at 7 P.M., Delmar Reformed Church, scout meeting for handicapped, Troop 159.

Kiwanis Club of Delmar meets every Monday night at 6:15 at The Center Inn, Route 9W, Glenmont.

Bethlehem Lions Club meets 1st and 3rd Wednesdays of the month at The Center Inn, Route 9W, Glenmont, 6:30 P.M.

AARP meets 1:30 P.M., third Tuesday of month, Delmar First United Methodist Church, Kenwood Avenue, Delmar.

Career Resource Center in Guidance Office at BCHS, open Thursdays 7-9 P.M. Community residents may use facility.

The Delmar Community Orchestra rehearses every Monday evening from 8 to 10 at the First United Methodist Church of Delmar.

Current exhibit at Bethlehem Historical Association, Route 144, Cedar Hill: "Old time quilts and stitchery for new time living." See Bethlehem Star, Crazy Quilt, Log Cabin and others between 2 and 5 any Sunday afternoon. A wealth of ideas for people interested in reviewing these arts.

10 A.M.-2 P.M., waste paper drive, second Saturday of each month, Town Parking Lot, 4 Corners, Delmar. For pick-up from the elderly or infirm, call church office Delmar Reformed or Methodist Churches.

Rosary — St. Thomas Church, Adams Place, Delmar, every Thursday at 11:45 A.M.

Bethlehem Junior Woman's Club meets 2nd Wednesday of each month, 8 P.M., Bethlehem Public Library.

Nathaniel Adams Blanchard Post #1040, American Legion Auxiliary, meets third Tuesday of month except July & Aug., 8 P.M., Post rooms.

Nathaniel Adams Blanchard Post

#1040, American Legion, meets first and third Monday of month (when holiday occurs, move to Tuesday) except July and August. 8:30 P.M.

Bethlehem Recycling Program (paper, cans, glass), Town Garage, 114 Adams St., Delmar, Mon. thru Fri., 8 A.M.-4 P.M. Papers should be tied, cans flattened, bottles clean w/metal removed.

THURSDAY, NOVEMBER 22



10:30 A.M., duplicate bridge, Normanside Country Club.

Schools are closed today and tomorrow for Thanksgiving vacation.

FRIDAY, NOVEMBER 23

8 P.M., mixed duplicate bridge, Normanside Country Club.

SATURDAY, NOVEMBER 24

9 P.M., dance, Punkintown Promenade, sponsored by New Salem Volunteer Fire Co. Ladies' Auxiliary, round and square dancing at the new fire house, music by Johnny Bridgewater and the Townsmen; beer, set-ups and snacks for \$8 per couple. Door prizes. Tickets at door.

8:30 P.M., "Never Too Late" by Arcadia Players, Academy of the Holy Names, N. Scot. Rd., Albany.

10:30 A.M., Crackers and milk meeting, students from Mt. Holyoke College will talk to high school students, home of Mrs. Lyon Greenberg, Krumkill Road, Slingerlands. Info: Mrs. Greenberg.

SUNDAY, NOVEMBER 25

11 A.M., brunch, Normanside Country Club.

7:30 P.M., "Never Too Late" by Arcadia Players, Academy of the Holy Names, N. Scot. Rd., Albany.

2-6 P.M., Annual Country Store, Ladies' Auxiliary, Bethlehem Lodge BPOE #2233, Route 144, Cedar Hill. Gifts, baked goods, etc.

MONDAY, NOVEMBER 26

Delmar Progress Club sale of articles made by Albany Assoc. of the blind, Grand Union, Glenmont.

8:15 P.M., meeting, La Leche League, home of Mrs. Paul Donnelly, 33 Fairway, Delmar.

TUESDAY, NOVEMBER 27

Delmar Progress Club sale of articles made by the Albany Assoc. of the Blind, Grand Union, Glenmont.

8 P.M., competition meeting, Delmar Camera Club, St. Stephen's Episcopal Church, Delmar. Photo essay contest using 20 slides to illustrate a theme; also Pre-Christmas Sale.

11 A.M.-7 P.M., exhibition and sale by Roten Galleries, Albany Institute of History and Art, Albany.

8 P.M., melodrama, directed by Mrs. Joseph Lamprecht, Delmar Progress Club Drama Group, Bethlehem Public Library.

WEDNESDAY, NOVEMBER 28

9 A.M.-6 P.M., mini-country store, Trinity United Methodist Church, Lark Street, Albany.

Delmar Progress Club sale of articles made by the Albany Assoc. of the Blind, Grand Union, Glenmont.

8 P.M., meeting, BC Board of Education with Oscar Ruberti, Director of Special Education for BOCES, special report. Educational Services Center.

THURSDAY, NOVEMBER 29

Delmar Progress Club sale of articles made by the Albany Assoc. of the Blind, Grand Union, Glenmont.

SATURDAY, DECEMBER 1

10 A.M.-4 P.M., Fair, sponsored by G.S. Cadette Troop #199, Delmar Reformed Church. Sale of handmade articles, baked goods, refreshments.

SUNDAY, DECEMBER 2

7:30 P.M., Advent hymn sing, Unionville Reformed Church. Folk group and massed choir of N. Scotland cluster churches will sing.

TUESDAY, DECEMBER 4

8 P.M., illustrated talk by Professor Gordon Gullion, University of Minnesota. Management of Ruffed

RESIDENTIAL &
SMALL COMMERCIAL

Snow Removal

Call early and be prepared.
Call Jim Fuller at 767-2760



Subscribe to The Spotlight

A MATTER OF INTEREST

INTEREST in the community. We get involved in each community in which we work and live. Our employees serve as volunteers with the United Fund, the Salvation Army, Rotary Clubs, Kiwanis Clubs, on school boards. They, and we as a bank, feel a commitment towards the better fulfillment of life in all of our locations.

INTEREST in savings for your future. Because we're a **MUTUAL SAVINGS BANK**, we can offer you a variety of savings plans earning monthly or quarterly interest to help make your future financially stable. **REGULAR SAVINGS ACCOUNTS** earn interest from the Day you Deposit until the Day you Withdraw. **TIME SAVINGS PLANS** earn higher rates for money left on deposit for specific terms ranging from 90 days to 7 years. At National Savings, your deposits are insured up to \$20,000 by the Federal Deposit Insurance Corporation.

INTEREST in people. People like you. When you're ready to buy, build, or improve your home, we're ready to offer you the **MORTGAGE** and **HOME IMPROVEMENT LOANS** you need. We'll help finance higher education, too, with **STUDENT LOANS**. Our low-cost **SAVINGS BANK LIFE INSURANCE** for families and individuals gives you more money for living because you save on premium costs. With our **CHRISTMAS** and **VACATION CLUBS** you can save for special expenses. **MONEY ORDERS** and **TRAVELERS CHECKS** may be purchased at all of our offices. And, we sell and redeem **SAVINGS BONDS**.

**WE'RE INTERESTED IN YOU.
MAYBE THAT'S WHY WE'RE KNOWN AS
THE BANK WHERE HAPPY ENDINGS BEGIN.**



MEMBER FDIC

MAIN OFFICE: State & Pearl Streets, Albany
BRANCHES: Westgate Shopping Center
Route 50, just east of Northway
Exit 15, Saratoga Springs
30 Brinkerhoff Street, Plattsburgh

Grouse. Sponsored by Bethlehem Sportsmen's Club at VFW, Delmar.

WEDNESDAY, DECEMBER 5

8 P.M., "Listening Session," sponsored by BC Board of Education at Educational Services Center. Topic: Suggested priorities for 1974-75 school budget.

Delmar Progress Club sale of articles made by Albany Assoc. of the Blind, Star Market, 4 Corners, Delmar.

THURSDAY, DECEMBER 6

Delmar Progress Club sale of articles made by Albany Assoc. of the Blind, Star Market, 4 Corners, Delmar.

9:30 A.M., meeting, League of Women Voters, Bethlehem Public Library. Program community studies. Babysitting. Info: 439-2210.

The deadline for Spotlight Classified Ads is Friday afternoon, preceding publication the following Thursday.

CHURCH DIRECTORY

FIRST REFORMED CHURCH OF BETHLEHEM
Route 9W, Selkirk

Parsonage & Study Phone — 767-3406
Office Phone — 767-2243

Staff
Jack Hilbrands, B.D. Pastor
Vernon O. Nagel, B.D. Minister of Calling
Mrs. Marlin Fuller Organist & Choir Director
Mrs. Peter VanKampen Church School Superintendent

Sunday Schedule

9:30 A.M. — Sunday School
11:00 A.M. — Worship Service
7:00 P.M. — Youth Fellowship

GLENMONT COMMUNITY CHURCH (Reformed)

3 Weiser St., Glenmont
Rev. Jack Cooper, Pastor

10 A.M. — Worship Service
11:15 A.M. — Sunday School
Everyone Welcome
("Coffee and . . ." after service)

FIRST CHURCH OF CHRIST, SCIENTIST

555 Delaware Ave., Delmar
439-2512

Sunday Services at 11 A.M.
Sunday School also at 11 A.M. for those under the age of 20

Wed. Testimony Meetings 8 P.M.

Reading Room at
397 Kenwood Avenue
Daily except Sun. and holidays
11:30-4:00
Everyone Welcome!

DELMAR REFORMED CHURCH
(founded 1841)

386 Delaware Ave., Delmar, N.Y.
Worship & Church School 10 A.M.
Nursery Care 10 to 11 A.M.
Coffee Fellowship 11 A.M.
Church School
dismisses 11:30 A.M.
Youth Groups 7:00 P.M.

Pastors: Gerard J. Van Heest,
David L. Cooper
Pastor Emeritus: LeRoy C. Brandt
Minister of Music — Jos. R. Gerber
Everyone Welcome

BETHLEHEM LUTHERAN CHURCH

85 Elm Ave., Delmar
Rev. Paul H. Gassman

9:15 A.M. Sunday School and Bible Classes
10:00 A.M. Coffee Hour
10:30 A.M. WORSHIP SERVICE
(Nursery Care)
1st & 3rd Sundays — Communion

unique Gift Idea



Be the first in your neighborhood to have a

KitchenAid® BUILT-IN TEAKETTLE.

It's a great convenience. Gives you steaming hot water at the turn of a knob. For instant foods and drinks and many uses in the kitchen.

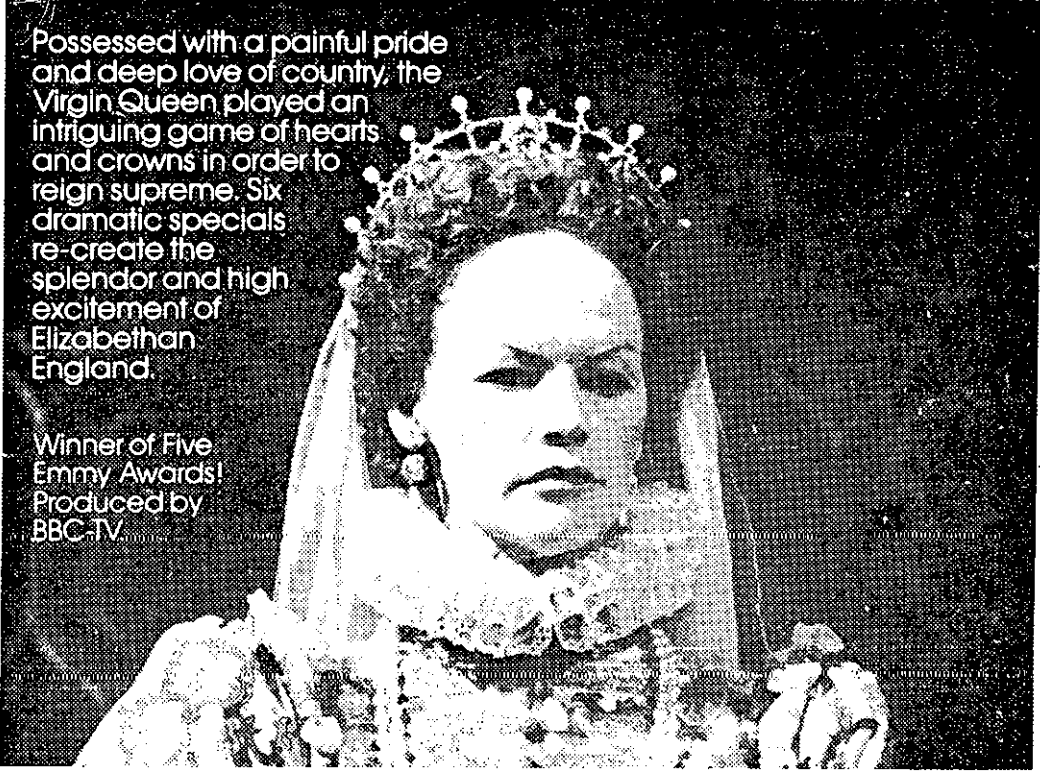
INSTALL IT YOURSELF. OR WE CAN DO IT FOR YOU.

D. A. BENNETT INCORPORATED

341 Delaware Avenue
HE 9-9966

ACADEMY AWARD WINNER NOV. 27: THE MARRIAGE GAME

GLENDA JACKSON IN ELIZABETH R

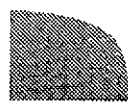


Possessed with a painful pride and deep love of country, the Virgin Queen played an intriguing game of hearts and crowns in order to reign supreme. Six dramatic specials re-create the splendor and high excitement of Elizabethan England.

Winner of Five Emmy Awards!
Produced by BBC-TV

TUESDAY NIGHT AT 9:30 ON CHANNEL 10

Presented in the public interest by your friends and neighbors at



Atlantic Cement Company, Inc. Ravens, New York

ATLANTIC CEMENT

national auto

38 STORES SERVING NEW YORK

Where DISCOUNT Still Has Meaning...

THANKSGIVING SPECTACULAR

OPEN THANKSGIVING 10 A.M. TILL 5 P.M.

CORDOVAN
SNOW TIRES

2 For \$26.88 SIZE 600-12

4 PLY NYLON Blackwall "SUPER TRACTION MASTER"



24 Month or 24,000 Mile Guarantee

SIZE	2 For	SIZE	2 For
A78-13	29.88	F78-14	39.88
B78-13	32.88	G78-14	43.88
E78-14	36.88	G78-15	45.88
560-15	33.88	H78-14	46.88
		H78-15	49.88

ALL PRICES PLUS F.E. TAX 1.45 to 2.80 EACH

THRILLING-EXCITING ALL NEW ELECTRIC FOOTBALL GAME
REG. 6.97 **5.66**
ALWAYS POPULAR!
Steel Gameboard With 3 Dimensional Players & Timer

ALL OUR CARRIAGES ARE ASSEMBLED AND READY TO TAKE DOLLY FOR A STROLL!
YOUR CHOICE
DOLL COACH REG. 5.97 **4.33 ea.**
DOLL STROLLER REG. 4.97

ALL THIS IN 3 FT. x 6 FT. SPACE
tyco Sebring Lighted PRO RACING
REG. 24.97 **18.88**
20 SECTION OF TRACK
2 1/2 FT. OF TRAIL LEVEL TRACK

take the work out of shoveling.

weather forecast: **Heavy Snow** **Hotting** be prepared
Eska SNO-FLYR Has everything you need.
Patented Split-Spiral "No Clog" Rotor • Built-In Instant Electric Start • Built-In Casting Chute
Cleaner • No Shifting, No Stalling • Strong Chain Drive

Recall Start Model 957 4 H.P. / 20" Reg. 229.97	ELECTRIC START Model 945C 5 H.P. / 20" Reg. 289.97	ELECTRIC START Model 952A 8 H.P. / 26" Reg. 419.97
--	---	---

\$199.00 \$258.00 \$388.00



2 For \$18.88 SIZES 600-13 650-13

NEW "78" SERIES BLACKWALL TOWN and SUBURB DESIGN "New Tread" TIRES

15 Month or 15,000 Mile Guarantee

2 For 24.88	2 For 28.88
<small>88 178-14 178-14 560-15</small>	<small>88 C78-14 H78-14 G78-15 H78-15</small>

Plus F.E. Tax 36¢ to 56¢ Each



Kenner ULTRA-CHROME SSP Racers REG. 3.47 2.49	Kenner "SNOOPY" POWER TOOTH BRUSH REG. 7.99 5.88	Kenner "SPIROTOT" SET REG. 1.98 1.44	CoLeCo 27" SNOW COASTER REG. 2.29 1.88	electro-brand WALKIE TALKIES REG. 13.88 Pr. 10.88 PAIR	CoLeCo 44" JR. THUNDERBOLT TOBAGGAN REG. 2.77 2.19
---	--	--	--	--	--

MTD BICYCLE REG. 26.97 19.99	PORTABLE CASSETTE RECORDER REG. 26.97 19.99	CLOCK RADIO REG. 12.97 9.88	5 BAND PORTABLE RADIO REG. 29.95 19.88	2 SLICE DELUXE TOASTER REG. 16.95 14.95	ELECTRIC CARVING KNIFE REG. 14.95 12.95
"MOHAWK" 10 SPEED RACING BIKE Just Say CHARGE IT! REG. 89.97 69.97	BOY'S or GIRL'S 20" HI-RISE BIKE LAYAWAY NOW! REG. 49.97 44.97	Starbrite TABLE AND CHAIR SET COMPARE AT 12.95 9.97	Spartus GRAND FATHERS CLOCK REG. 11.88 9.99	SIZES 3-12 SNOW MOBILE BOOTS REG. 9.97 6.97	METAL FLAKE SNOW MOBILE HELMETS REG. 17.88 12.88

Black & Decker sale

JIG SAW **9.99** 7504

7 1/4" SAW **17.99** 7301

1/4" DRILL **7.99** 7004

Save On These Coupon SPECIALS

Crayola CRAYOLA CRAYONS 119 VALUE 59 <small>LIMIT 2</small>	Play-Doh PLAY-DOH FOUR-PAK REG. 89¢ 69 <small>LIMIT 2</small>	Castrol CASTROL SNOWMOBILE 40-1 OIL REG. 63¢ 43 <small>LIMIT 6</small>	21 PC. TEA SET REG. 98¢ 79 <small>LIMIT 1</small>	SYLVANIA 60-75-100 WATT HOUSE BULBS REG. 29¢ ea. 4 FOR 77 <small>LIMIT 8</small>
---	---	--	---	--

TOWN SQUIRE SHOPPING PLAZA, GLENMONT, ROUTES 9W & 32

Open Monday thru Saturday - 9 A.M. to 9 P.M.

Always Easy Credit At NATIONAL... Just Say "CHARGE IT"



**FIRST UNITED
METHODIST CHURCH**

428 Kenwood Avenue, Delmar
Phone 439-9976

Worship Service: 9:15 & 11 A.M.;
Sunday

(Nursery and Child care provided)

Coffee Fellowship at 10:15

Church School: 9:15 & 11, Sunday
4:00 P.M., Tues. (Grades 1-5)

Sr. U.M.Y.F. 6:15 P.M., Sunday

Pastor: Robert B. Thomas
Thomas D. Peterson, Gary Halim

**FIRST UNITARIAN CHURCH
of ALBANY**

405 Washington Ave., Albany

The Rev. Nick Cardell, Jr.
Office phone: 463-7135

10:30 A.M. — Sunday Service and
Church School

11:30 A.M. — Coffee Fellowship

**DELMAR PRESBYTERIAN
CHURCH**

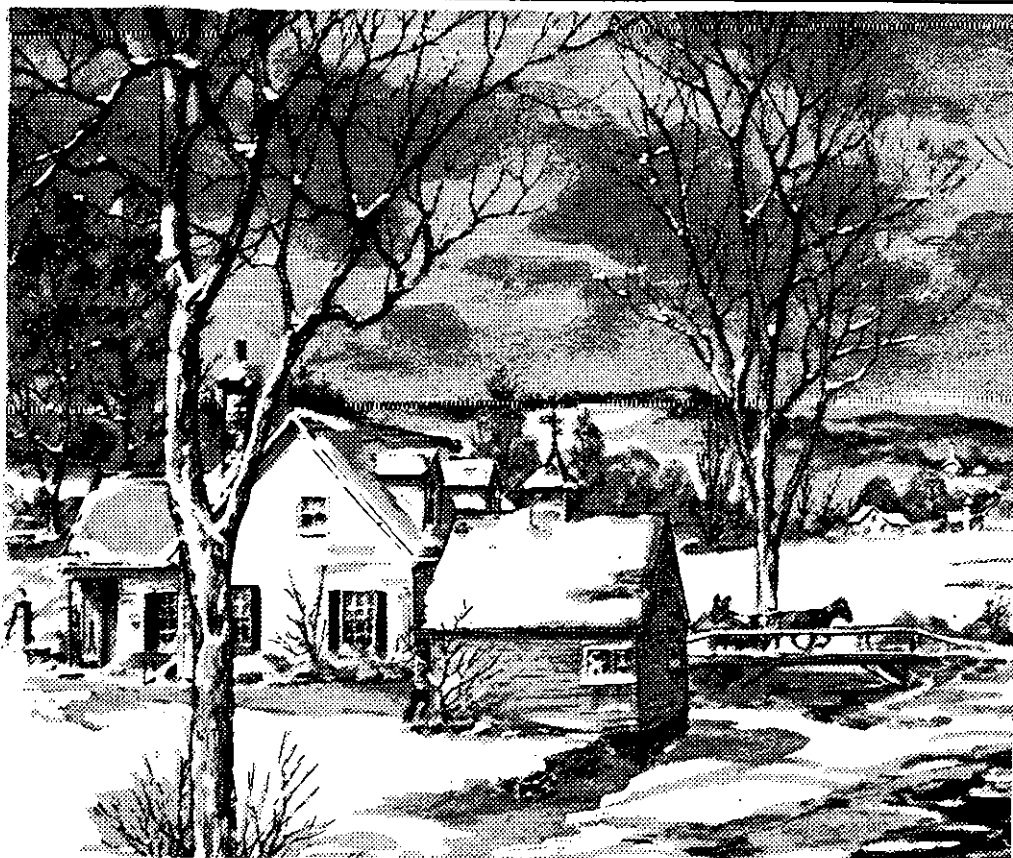
585 Delaware Avenue
Delmar, New York
439-9252

Worship and Church School
— 10:30

Youth Fellowship — 6:30

George H. Phelps — Pastor
Joseph V. Farrell — Organist

— All are welcome —



THIS CHRISTMAS — JUST FOR THE FUN OF IT —

SHOP DELAWARE PLAZA

We know we're not the biggest shopping center in the area.

But we like to think of ourselves as David, contending with, not one, but a number of Goliaths.

Should we be scared?

No. Like David, we have our good points, and we're proud of them. For example:

We can and do give individual, personal service to all. You don't have a struggle getting a clerk's attention.

You can always park, generally close to the stores. You don't have to contend for a parking place with thousands of cars, trying to squeeze in, until you feel like a sardine waiting to be canned.

Leaving the Plaza, there are no traffic jams, and no great lines of cars — even when it snows. You don't get stuck endlessly while your gas runs down.

We gift wrap on the spot. You won't get sent upstairs and to the back where you wait in line.

All right, it's true — we don't have an inclosed mall. But have you ever walked around in a controlled spring-like climate wearing a heavy coat, rubbers, a muffler, woolen clothes, and carrying a load of packages?

This year, enjoy Christmas shopping.

**SHOP DELAWARE PLAZA
DELMAR, NEW YORK**

OPEN EVENINGS — OF COURSE

Carrier

FURNACES

put the

HEAT ON WINTER

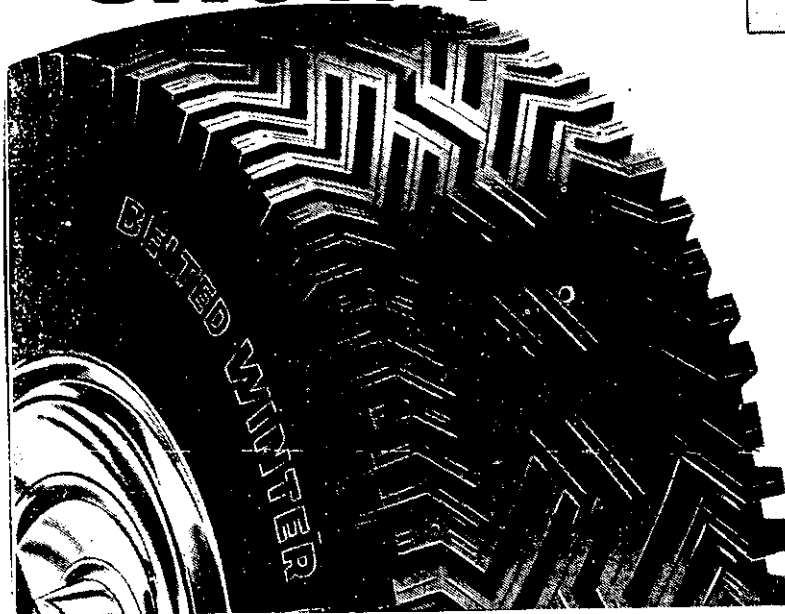
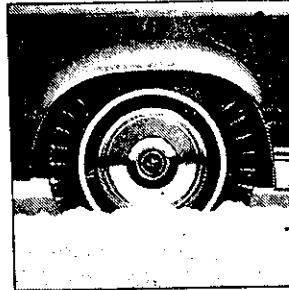
call



439-7605

318 Delaware Ave.
Delmar, New York 12054

Don't wind up paying for the wrong snow tire.



Get Uniroyal Belted 78's

\$21⁵⁰ A 78-13 Blackwall
Tubeless Plus Fed.
Ex. Tax of \$1.81

Size	Blackwall Price Each	Federal Excise Tax
A 78-13	\$21.50	\$1.81
E 78-14	27.00	2.31
F 78-14	29.25	2.50
G 78-14	31.00	2.67
H 78-14	33.70	2.94
J 78-14
F 78-15	29.25	2.54
G 78-15	31.00	2.73
H 78-15	35.70	2.96
J 78-15	40.00	3.12
L 78-15	42.00	3.31

All prices plus Fed. Ex. Tax. No trade-in required on snow tires. Whitewalls add \$3.00 more each.

UNIROYAL MUD & SNOW

Steel Belted Radials

FOR
IMPORTED CARS



UNIROYAL

STEEL BELTED RADIAL

Snowplow

\$54⁹⁹

FR78-14 Whitewall Tubeless Plus Fed. Ex. Tax of \$1.89.
No trade-in required on snow tires.

WEINBERG TIRE CORP.

935 Central Ave., Alb. 482-4449



WINTER DRIVING CENTER

OPEN THUR. & FRI. 'TIL 9 P.M.

The Spotlight Goes to School

Nominated for Who's Who

Bonnie M. Kawczak, daughter of Mr. and Mrs. Michael Kawczak of Feura Bush, has just been informed of her nomination to WHO'S WHO AMONG STUDENTS IN AMERICAN UNIVERSITIES AND COLLEGES. This honor includes biographical publication in the 1973-1974 edition of this volume.

Students are selected for this award based on academic excellence, community and college service, leadership and ability and future potential.

Miss Kawczak is a senior at Russell Sage College where she is majoring in nursing. She is currently a member of the Athenians Honor Society, The Cultural Affairs Committee, the Student Nurses' Club and the Nursing Recruitment committee. Miss Kawczak, a graduate of Beth-

lehem Central High School, plans to pursue graduate studies in psychology and psychiatric nursing.

Three-Hour Safe Driving Course

The New York State Vehicle and Traffic Law requires that all applicants for driver's license must have taken the Three-Hour Safe Driving Course. Proof of completed training must be presented at the time of scheduling the road test appointment. Bethlehem Central Continuing Education will offer this course on December 3 & 5 at the Bethlehem Central High School, Room 19A, at 7:15 P.M. You must have your learner's permit to be admitted to the class which consists of two 1 1/2 hour sessions, 1 1/2 hours Monday evening and the other 1 1/2 hours Wednesday evening.

Gift ideas from The Wood Shed and our Christmas Corner!



Camel Caravan from Bethlehem — Because it is hand carved in Bethlehem, this camel caravan is a Christmas gift of special significance. Richly grained olive wood is used by carvers to make the three camels led by a man on a donkey. 3-1/2" high, 14" long. **4.95**

was 4.95, Now 3.95



Wooden Creche from Bethlehem — Carved in Bethlehem of boldly grained olive wood, remarkable creche derives its appeal from the simplicity of the carving. Twelve pieces include holy family, wise men, shepherd and four animals. Largest figures 5". **21.50**

was 21.50, Now 18.95



Largest selection of desks in the area.

CLOSED MONDAY

Open Daily to 5:30 Tues. & Thurs. 'til 9

2209 CENTRAL AVE. SCH'DY
RT. 5 ALBANY-SCH'DY RD.
EAST OF MONAWK MALL

THE WOOD SHED

346-2200

From the Ready-to-Finish Specialists



INDEPENDENT STUDY PROJECT — Three BCHS students, Michael Cassidy, kneeling center, William Clarke and Keith Smith, far right, worked together last summer with Geologist Paul Bird, standing center, and two Christian Brothers Academy students, far left, on a game and habitat survey on the Clarksville property of the Bethlehem Sportsmen's Club. Their map and reports will substantiate the Club's bid for a conservation award given annually by the Albany County Sportsmen's Alliance. The boys will all get academic credit for the 24-day project through the Independent Study programs at their schools.

Come join our Christmas Club

Come in Today. Open your CS&L Christmas Club,
and pick up a set of Bayberry Scented Holiday
Candles — Our Christmas gift to you.

Next October, we'll send you a check for
your completed club, plus a 5.25%
dividend, compounded daily from
day of deposit, for an annual yield
of 5.47%. Something this Christmas.
Something extra next Christmas.



central savings and loan

albany • voorheesville



Hey Gals!
for full Nutrition

BUY

Freikofer's

**BATTER-WHIPPED
SUNBEAM BREAD**

Available Almost Everywhere

LOUIS SPELICH'S PICTURE STORY OF SUPERINTENDENT'S DAY CONFERENCE

While BCHS students enjoyed a "Day off" on Monday, Nov. 5, it was a very busy time at the high school. It was the Annual Superintendent's Day Conference with several consultants from outside the school district as workshop session leaders featuring the theme "educational topics as related to individual instruction." Louis Spelich was there to do this Spotlight picture story.



We've been cleaning rugs for 47 years and that's quite a pile to stand on

A lot of rugs have passed through our hands in the last 47 years. Orientals, wools, cotton, braided, nylon and other synthetics. One thing that can be said about all of them, though they all come out clean. That's because Careful and only Careful has the most professional equipment and the most experienced professionals of anybody in Capitland... so if you're interested in prolonging the life of your rug, call Careful today. At Careful the only way we clean anything is the right way.



Careful
Since 1926

235-3110

Carpet Cleaners

119th STREET and 6th AVE., TROY, N.Y. 12182

SPECIAL PRE-HOLIDAY PURCHASE!

DECORATOR CHAIRS

(Reg. \$120 ea.)

(IN STOCK)

89.95
EACH



Marcus
DECORATORS

Stuyvesant Plaza

489-4795



This course will be offered again January 7 & 9. If further information is desired call 439-4905.

Open House and Placement Test

Mercy High School's Annual Open House will be Sunday, November 25 from 2 to 4 P.M. at the school.

Open to all seventh and eighth grade girls and their parents the program will consist of a tour of the school, slide show and punch and cookies. There will also be an opportunity to speak with administrators, teachers, parents and students of Mercy High School.

Mercy High offers full academic and business programs with several electives and a wide range of extracurricular activities.

On December 1 at 8:30 the Diocesan Placement test will be given at the school. Students who expect to take this test should be at the school at 8 A.M.

Mercy High School is a private Catholic secondary school for girls located at 310 So. Manning Blvd., across from St. Peter's Hospital.

For further information



BRIAN HARTE, son of Mr. and Mrs. M. J. Harte, formerly of Delmar now living in Holland, was chosen quarterback from all the American football teams in Holland. He called the signals for the Holland ABF All-Stars in their game Nov. 17 against the Brussels All-Stars representing Belgium.

anyone may call the school at 482-1110 or 482-0229.

Janet Wall in Japan

Janet Wall, daughter of Mr. and Mrs. James C. Wall, 15 Bedell Avenue, Delmar, and a senior at Colgate University, is in Japan for the fall semester as a member of the University's second Japan study group.

Janet is a graduate of Bethlehem Central High School and is majoring in Social Relations.

Inaugurated in 1972, the Japan study group requires intensive preparation including a full year of language study and completion of a survey course in Japanese society and culture. Thomas E. Swann, instructor in Japanese studies at Colgate, is directing the 1973 group comprising nine students.

The groups live for a time with Japanese families and study at the University of Kyoto. The students' first month is spent in intensive language study at Inter-University Seminar House in Tokyo which recently changed its charter to allow Colgate to become its first international member.

Election Announced

Miss Patricia Fiato, President of the Bethlehem Central Chapter of Future Business Leaders of America, has announced the results of the election for the Chapter's Historian and Publicity Chairman.

In the voting held in the business education classes on November 7, Kathleen Sullivan was elected Historian for the current year. She will keep the scrapbook of mementoes of events of the year. Rita Bassani was elected Publicity Chairman. Her duties will be to make sure that all activities of the Chapter receive publicity in the local press as well as in the Bethlehem Star.

Jacqueline Landau in Denmark

Jacqueline Landau, daughter of Dr. and Mrs. Joseph Landau, 94 Meadowland Street,

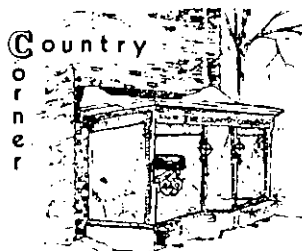
Delmar, is currently participating in Kirkland College's Program-in-Absentia for the 1973-74 academic year.

Miss Landau, a junior at Kirkland concentrating in psychology, is now at the University of Copenhagen. She is taking courses in Nordic mythology, cultural and anthropological history of Scandinavia, Danish language, family sociology and comparative education.

Institute Prexy to Speak

The Future Business Leaders of America Chapter at Bethlehem Central High School has invited Matthew Dono-

THE UNIQUE BOUTIQUE



famous since 1971
for distinctive,
decorative and
delightful gifts

come to

The Country Corner

Open Mon. thru Sat. 10-6 • Thurs. evenings 'til 9
Telephone 439-6671 • 449 DELAWARE AVENUE, DELMAR
(Next door to Delmar Public Library)



*It's that season again
and we're glad for the
chance to "sound off"
with warmest advice
for our loyal cus-
tomers and friends with
an added "note" to
show you the latest
styles for the
Holidays.*

Paul Mitchell's
MEN'S WEAR

99 DELAWARE AVENUE
ELSMERE, N.Y.

Phone 439-3218





COUNTRY-WESTERN
Music and Dancing
• Saturday Nights •
JOHNA'S BAR

458 Delaware Ave., Albany, 462-9389

frio, President of Spencer Institute of Business, Schenectady, to speak on November 29.

Mr. Donofrio will discuss the opportunities for machine shorthand reporting, especially court reporting. He will be accompanied by two

students from his school who will demonstrate machine shorthand skills.

The meeting has been arranged by Rita Bassani assisted by Mrs. JoAnn Davies, FBLA advisor.

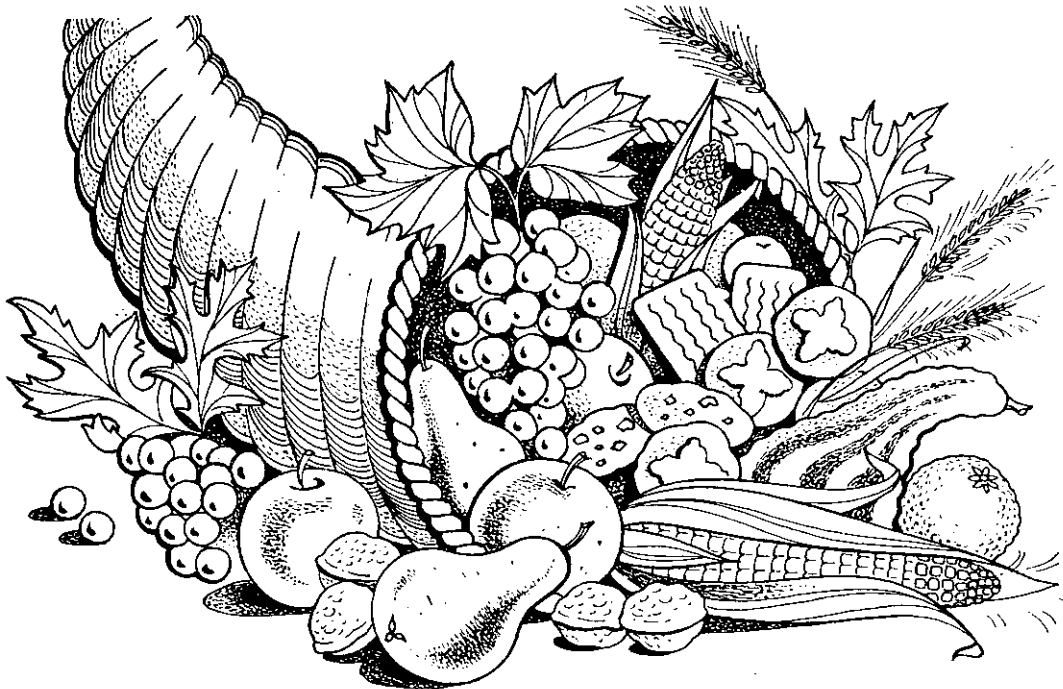
Dance Held

Drew Maggard, President

of the Bethlehem Central High School Chapter of Distributive Education Clubs of America, appointed Sue Jenks Chairman of the group's dance which was held on November 16.

The Rutland Road music group provided music for dancing in the cafeteria at the High School beginning at 8 p.m.

Miss Jenks was assisted by Wally Reed, Lisa Beckett, Debbie Anastasi, Ann Peterson, Raymond Metchik, Eileen Haas, Wayne Keezer, Marilyn Musgrove, David Morin, Laura Ruff, Sandy Pittz, Robert Lauder, Douglas Shanlee, Alex Verardi, Brian Wickes, Cathy Link, William James, Robert Johnston, Michael Stannard, and Peggy Were. Robert A. Pierson, Coordinator of Distributive Education at BCHS, is the DECA advisor and is assisting the students in their planning Sessions.



Woolworth

DELAWARE PLAZA, DELMAR

*You're Invited to a
FALL Festival*

Open House 10%
DISCOUNT

On All Items Throughout the Store

DATE: SAT., NOV. 25th
TIME: 6 to 9 p.m. ONLY



Weekend Family Swim

At the Middle School pool Saturdays and Sundays 1-4 P.M. Children under 12 must be accompanied by an authorized adult. Fee: Middle School and younger 25¢, High School and older 50¢.

Weekend Family Swim will be cancelled November 24 and 25.

Reduced Temperatures

As a result of the acute fuel shortage, the temperature of all school district facilities has been reduced during the evening and weekend hours. Those participat-

ing in recreational activities and using the shower facilities will find the water temperature proportionately lower. The current pool temperature will be maintained.

HERE AND THERE

Boy Scout Fund Raiser

Troop 72, Boy Scouts of America of Slingerlands will conduct its annual fund raising drive from Saturday November 17 thru Saturday November 24. The drive, which will be conducted individually by the Scouts, consists of Value Sales Kits. Each kit contains a variety of items from flashlights to tool kits to Christmas gifts and household helpers. The campaign will be done on a door to door sales basis.

All profits will be used for touring and camping activities. Further information can be obtained from Project chairman Charles Haslam at 439-9702.

McCRAIG PROMOTED

Joseph J. McCraig has been promoted to the position of Assistant to the Senior Vice President in charge of Supermarket Merchandising and Operations and Peter Lavoy has been named Marketing Manager in the headquarters Grocery Merchandising Department, it was announced today by The Grand Union Company, the nation's ninth largest food chain.

Mr. McCraig, who had formerly been Superintendent of Stores for the company's Metro-Connecticut Division, reports to Thomas R. Doyle, Senior Vice President of Grand Union. Mr. Lavoy, who had formerly been Grocery Sales Manager in the company's Empire Division in upstate New York, reports to Harry

ANSWERING SERVICE

Business & Professional

Telephone Exchange

24 hours a day

Call

439-4981

CRAILO AQUARIUM

136 BROADWAY

RENSELAER, N.Y.

• ED MARSHALL •

Aquarium Leasing

Pet Supplies



Birds

Exotic
Tropical & Marine
Fish

Store Hours: Tues. thru Sat. 11 A.M.-8:30 P.M.

Sun. 12-6 • Closed Mon.

There's never been
a better time.
Bulova.



Buy now for Christmas or put on layaway.

HARRY L. BROWN Jeweler

Thistle Gift Shop

363 DELAWARE AVENUE AT 4 CORNERS DELMAR

MOJUD PANTYHOSE FOR JUST \$1

THE VERY THING™
SHEER, STRETCH
PANTYHOSE
BY MOJUD

Anne's Hat Box

AND
ACCESSORIES

406 KENWOOD AVENUE
DELMAR, NEW YORK 12054

TELEPHONE
439-5011

ANNE MCGOEY, PROP.



MOJUD®

Thinking of Christmas?

Think of Grover's Stationery for a
complete selection of
Christmas Gift Wrap, Cards and Gifts.

FANNY FARMER
CANDIES



1974
CALENDARS
and
DIARIES

CANDY KRAFT
CANDIES

LENOX and HALLMARK CANDLES and accessories

PARTY SUPPLIES

Also — U.S. Post Office in our store.

C. M. GROVER STATIONERS

20 DELAWARE PLAZA

DELMAR, N.Y.

T. Flynn, Merchandising Manager in the Grocery Department.

Both men maintain their offices in Grand Union's corporate headquarters in the Elmwood Shopping Center at 100 Broadway here.

In his new post, Mr. McCaig will assist Mr. Doyle in supervising all aspects of Grand Union's supermarket operations and merchandising programs. Mr. Lavoy will be responsible for the purchasing and marketing of all Grand Union private label frozen food and egg products.

Mr. McCaig joined the company in 1961 as a part-time clerk. He subsequently joined Grand Union's Management Trainee Program and served in a variety of store and field supervisory positions including store general manager, resident trainer, personnel supervisor and district sales manager.

Mr. McCaig graduated from Seton Hall University in 1967 with a bachelor of science degree in industrial relations. In June, he completed a special two-week Food Executives Seminar at Cornell University.

He and his wife, Arlene, have two children. They live at 81 Cane Street in Bogota, N.J.

Mr. Lavoy joined Grand Union in 1961 as a member of the company's Management Training Program. He served in the Florida Division as a Store Manager and then was named Pricing Coordinator in the Empire Division. He was later promoted to Grocery Buyer and Grocery Sales Manager for the Empire Division.

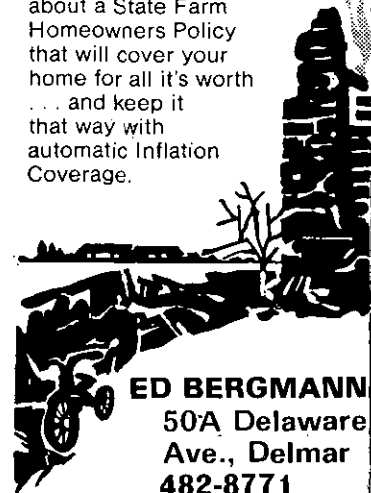
He attended Siena College in Loudonville and the Univer-

Inflation hasn't changed the price of ashes.

But it has changed the price of your home. For example, if you bought a \$20,000 home in 1968—today it's worth about \$27,000. Don't be left with a costly pile of ashes. See me about a State Farm Homeowners Policy that will cover your home for all it's worth ... and keep it that way with automatic Inflation Coverage.



THE ELECTION of O. Mark DeMichele as System vice-president of public relations for Niagara Mohawk Power Corporation has been announced by John G. Haehl, Jr., president and chief executive officer of the utility. Haehl said that DeMichele will have responsibility for public relations activities throughout the 22,000-square mile area served by Niagara Mohawk. DeMichele, formerly director of public relations for the utility, will continue to have his headquarters in Syracuse. DeMichele, 39, joined Niagara Mohawk in 1961 as manager of advertising. Prior to that he was vice president of a local public relations agency.



ED BERGMANN
50A Delaware
Ave., Delmar
482-8771



STATE FARM
Fire and Casualty Company
Home Office:
Bloomington, Illinois

city of Miami in Miami, Florida. He and his wife, Rosemary, have three children. They live at 8 Alpine Approach in Ballston Lake.

Christmas Concert

Karen Ranung, soprano, will be the soloist with the Mendelssohn Club of Albany, Inc. when presents its one

hundred ninth concert at Chancellors Hall, Albany, on December 7 at 8:30 P.M. It is to be noted this is a Friday evening and a change from the traditional Wednesday evening.

Miss Ranung, a voice teacher and recitalist, is a protegee of the French tenor, Yves Tinayre. She began her



SGT. LEO (PAT) DORSEY, Bethlehem Police Department Youth Bureau, was surrounded by small-fry friends as he pulled the winning tickets in the Tri-Village Nursery School drawing which was part of the school's 25th Anniversary Celebration.

Jim Fuller Photo

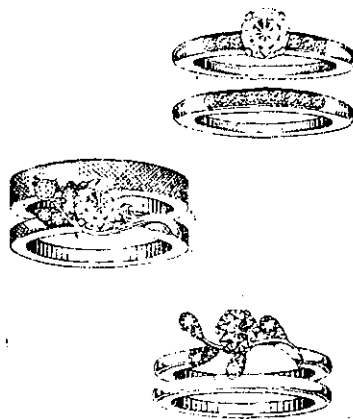
The Tri-Village Nursery School held its autumn raffle on Friday, November 9. Sixteen winners were picked by Sgt. Dorsey of the Bethlehem Police Department as youngsters from the school looked on. The prizes, which were made available through the generosity of Tri-Village merchants, included:

- \$50 worth of meat from the Delmar Meat Market
- Five half-gallons of ice cream from Friendly Ice Cream
- Four half-gallons of ice cream from the Tollgate
- A basket of bath products from Mother Hubbard's Cupboard
- A gift certificate from the Village Shop
- A gift certificate from the Little Folks Shop
- A pizza at Brockley's
- A gift certificate from Anne's Hat Box
- A gift certificate from Town and Tweed
- A Lady Sunbeam Complexion Care Kit from Hilchie's Hardware
- An embroidery set from the Delmar Toy and Hobby Shop
- Eve Arden Toiletries from Denby's
- A stainless steel fork and spoon set from Mullen's
- A large display of dry flowers from Delaware Gardens
- And Assorted other items.

The drawing was held in conjunction with the 25th Anniversary Celebration of the Tri-Village Nursery School. The School is open to all children between ages of 3 and 5. Parents who are interested in learning more about the school should contact: Mrs. Marie Manzella at 439-9295.

AT ADAMS

DOWNTOWN ALBANY



IT'S FALL!
Which means Weddings,
presents and love and lovers
and
**DIAMOND ENGAGEMENT
ENSEMBLES**

*"Our name inside a diamond ring means better value —
WE GUARANTEE IT"*

Shop Thursday
'til 9 P.M.

Frank H.

Adams

• 30 days charges • 90 days no int. • Master Charge • BankAmericard

No. Pearl & Steuben Sts., Downtown Albany

FREE SAFE Parking at ALL 15 Park & Shop Lots



Robey

ORIENTAL and DOMESTIC

Carpet & Rug Cleaning

Specializing In ...

WALL to WALL

Carpet Cleaning in the Home

Carpet Installation Repairing & Binding

Free Pick-up & Delivery

FACTORY
27 SHERMAN ST.
ALBANY, N.Y.



call 439-9978

C. B. CLARKE, INC.

FOR
INSURANCE
CALL



BURT ANTHONY

CALL US FOR
SNOWMOBILE INSURANCE



JUST CALL 439-9958
339 Delaware Avenue, Delmar

FUR

"I Love You"
or
"I Love Me"
at
Thanksgiving
with a
Hat
Shrug
Cape
Jacket
Pant Coat



Full Length Coat

or The Floor Length Model

Beck & Fur
111 Clinton Avenue
Albany, N.Y.
465-1734

carrer as a pianist, but changed to the study of voice under a scholarship at the Curtis Institute of Music at Philadelphia with further study of repertoire at the Juilliard School, New York. Two successful New York Town Hall recitals won her praise from the critics as an interpreter of the Art Song. Among her many solo recitals, Miss Ranung has appeared as soloist with orches-

tra and with chamber music groups. She has sung for the Columbus Boy Choir School and has participated in nearly one hundred "in school" concerts of Anglo-American music with harpsicord and plucked dulcimer.

Sunday Funday

On Sunday, December 2 at the Albany Jewish Community Center the "Sunday Funday Kids" will present an International Fair begin-



FENNIG'S ALL-STAR STRING BAND will conduct a COUNTRY DANCE at the Bethlehem Coffee House, November 23, Friday, at 9 P.M. The evening will consist of learning country dances; contras, longways, circle and quadrilles. All dances will be taught. Live music will be a highlight of the evening featuring hammered dulcimer, fiddle, flute, and piano.

Christmas Cards

COMPLETE STOCK

- Hallmark Christmas Cards
- Exquisite Gift Items
- Fenton Milk Glass
- Huge Selection of Novelty Gift Items
- Stuffed Toy Animals
- Christmas Card Imprinting

CARD FAIR | 41 State St., Albany
52 No. Pearl St., Albany

ning at 2:00 P.M.

Sunday Funday is a segment of the Sunday programming for the Junior Department (pre-school through 4th grade). The children are divided into groups according to age and led by highly skilled and competent leaders. Each group was assigned a country and through art, kitchen craft, music, drama and dance, each group will present its nation at the Fair.

The countries to be represented are the United States, Israel, Holland, France, England, Spain and Denmark.

New Class

A Red Cross standard first aid class will open at the Albany Area Chapter Headquarters in Albany on Wednesday evening November 28. Class will run from 7 to 9 P.M. for five Wednesday evenings. John Yungblut, a certified first aid instructor will teach the course.

Registration may be made by calling the Albany Area Chapter, Red Cross at 462-7461.

Engineering Society to Meet

The Albany Society of Engineers will hold its next meeting on Tuesday, November 27, at the Holiday Inn, Menands. Mr. George Proper, Fire Protection Specialist, New York State Office for Local Government, will be the guest speaker of the evening. He will speak on "The Fire Service - Trends in Apparatus and Equipment." The subject will be illustrated with a slide program. Mr. Proper is a member of the Shaker Road-Loudonville Fire Department.

Holly Check Report

The Bethlehem Jaycees report that their "Holly Check" program was a success. The Jaycees sold 6000 of the vouchers, which were given out to Tick or Treaters on Halloween. Reports from all sectors indicate that both parents and children were enthusiastic about the program. The Jaycees are presently

CAT HAVEN

FOR CATS ONLY

Individual care in Private Home
ETHEL FAY ROCKWELL 5-2715

THINKING
of
BUYING
or
SELLING?
call

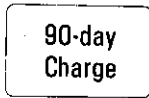
JOHN J. HEALY
REAL ESTATE
439-7615

A. W. PELTON CO.

DIAMONDS... WATCHES... GIFTWARE
PEWTER MUG - \$7.50, engraved free

PEWTER - 20% OFF
with this ad

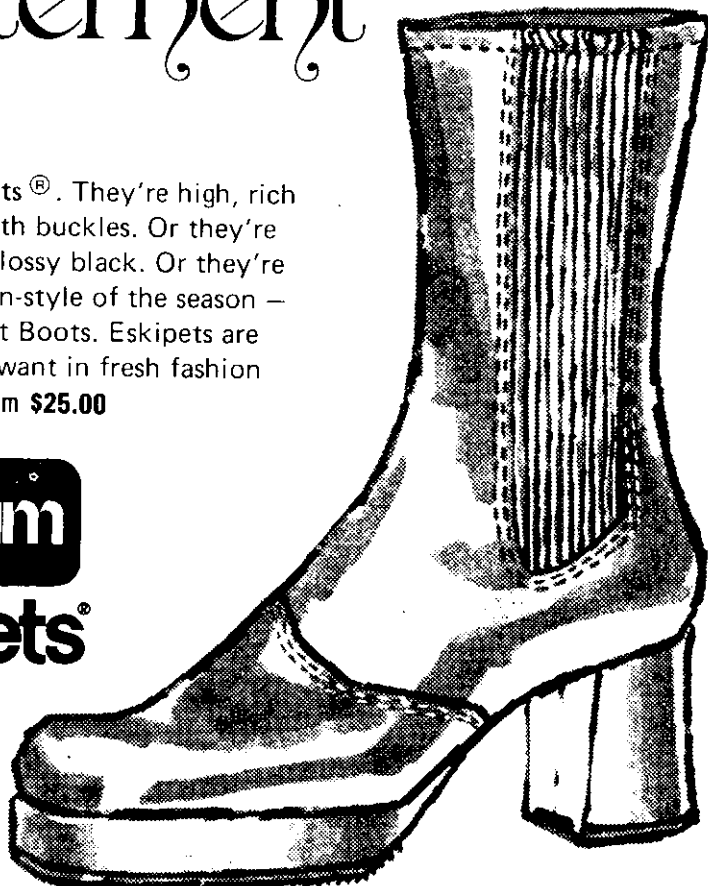
111 Central Ave., Albany, N.Y. • 436-7374
9:00 A.M.-9:00 P.M.



Fresh Fashion Excitement

Dunham Eskipets®. They're high, rich leather-looks with buckles. Or they're low, sleek and glossy black. Or they're the pants-fashion-style of the season - 9" Eskipets Pant Boots. Eskipets are everything you want in fresh fashion excitement. From \$25.00

dunham
eskipets®



Donnelly SHOES



22 Delaware Plaza Shopping
Center - 439-6106

Latham Corners Shopping
Center - 783-7491

examining and evaluating the entire program, with the intention of improving it for next year.

The Jaycees wish to publicly thank the following people: Joe Mottolese, Delmar Grand Union Manager, for his cooperation throughout the program; C.M. Grover, for the loan of a table and chair; the Albany Jaycees, for helping to staff the booth.

Holly Checks may be redeemed at the Grand Union until December 1st.

WOOLLY BEAR
While hiking on Route 144
In New Baltimore
I met a woolly bear
I'm sure glad he wasn't
Smokey, the bear!
— Aina L. Anderson

"Meet the Authors"
"Come — Meet-the-Authors," Sunday, December 2, from 3-5 P.M. at the Albany Jewish Community Center. This program, celebrating Jewish Book Month, will present five authors: Pro-

Be creative
be correct ...
COLOR STYLE
YOUR HOME
with
PRATT & LAMBERT
PAINTS
in exclusive Calibrated Colors™



Ed Dillon
EMPIRE PAINT COMPANY
142 Central Avenue
Albany, New York 12206
Phone: 449-5400

LAST CALL FOR TABLE PADS
Still time to get pads made for your Holiday Table. Don't delay — call today!

Delmar Decorators
439-4130
DELAWARE PLAZA, DELMAR

TREESCAPE
ARBORICULTURAL SERVICE.



439-7147

GRAND UNION'S Thanksgiving Values

GRAND UNION FROZEN CRINKLE CUT POTATOES
2 LB. BAG **39¢** PLUS STAMPS




U.S.D.A. CHOICE CHUCK ROAST
FIRST CUT **69¢** PLUS STAMPS
U.S.D.A. CHOICE BNLS. SHOULDER ROAST
OVEN OR POT ROAST **1.39** PLUS STAMPS

THERE'S NO BETTER BUY THAN A SWIFT'S PREMIUM

DEEP BASTED
with a special turkey jus

BUTTERBALL TURKEY
16-24 LB. AVG. WGT. **79¢**
10-16 LB. AVG. WGT. **85¢**

HEAVIER BIRDS PRICED SLIGHTLY HIGHER PER POUND
GRAND UNION HAS THE LARGEST SELECTION IN TOWN



STORE HOURS
MOST GRAND UNIONS
OPEN: 'TIL 9 PM
MON., TUES & WED
CLOSED ALL-DAY
THURSDAY, NOVEMBER 22
THANKSGIVING DAY

NESTLE'S SEMI-SWEET CHOCOLATE
CHOCOLATE NESTLE'S



GRAND UNION SNACK



DELICATESSEN

TRUNZ-DUTCH, OR PEPPER BAKED LOAVES	1 LB.	69¢	ECONOMICAL BEEF PATTIE MIX	LB.	89¢
TRUNZ-KIELBASI	1/2 LB.	69¢	ROCK CORNISH-GOVT. GRADE "A"	LB.	69¢
BAKED LOAVES	1/2 LB.	69¢	GAME HENS	LB.	1.69
ALL BEEF (3 LB. BOX-3.89 EA.)	LB.	1.39	BNLS. BEEF U.S.D.A. CHOICE	LB.	99¢
GRIDDLE FRANKS	1/2 LB.	69¢	SHOULDER STEAK	LB.	89¢
SALAMI STYLE	1/2 LB.	69¢	SHORT FOR FLANKEN	LB.	89¢
PROVOLONE CHEESE	1/2 LB.	69¢	RIBS OF BEEF	LB.	89¢
			SLICED-SELECTED	LB.	89¢
			BEEF LIVER	LB.	89¢

HOLIDAY PARTY TIME
begins at your friendly GRAND UNION DELI

FREE — colorful "party platter brochures" available at deli counters!

FROZEN MEAT & FISH VALUES
FREEZER QUEEN GRAY & SLICED TURKEY 2 LB. PKG. **1.49**

12 OZ. BAG **49¢**
PLUS STAMPS



PAIN RELIEF
BAYER ASPIRIN
BOT. OF 100 **69¢**
PLUS STAMPS

11 OZ. PKG. **29¢**
PLUS STAMPS



REAL LEMON
LEMON JUICE
1 QT. BOT. **39¢**
PLUS STAMPS

WILD'S OLD WORLD
BAUERNBROT
NEW YORK
SHARP CHEDDAR

DELI ITEMS IN THIS BLOCK AVAILABLE AT STORES WITH SERVICE DELI COUNTERS ONLY

20 OZ. LOAF **49¢**
TOBIN'S FIRST PRIZE
SLICED BACON
GRAND UNION
SLICED BALONEY
GRAND UNION HOT DOGS
SKINLESS FRANKS

LB. **1.49**
SLI. CHICKEN
FREEZER QUEEN BREADED
VEAL PARMAGIAN
FREEZER QUEEN
MEAT LOAF
2 LB. PKG. **1.49**
2 LB. PKG. **1.49**
2 LB. PKG. **1.49**

• THANKSGIVING VALUES •

DETERGENT PALMOLIVE LIQUID 1 QT. BOT. 69¢ PLUS STAMPS	GRAND UNION KOSHER DILL OR SWEET GHERKINS 2 16 OZ. JARS 89¢ PLUS STAMPS
CLAM CHOWDER HOWARD JOHNSON'S NEW ENGLAND 15 OZ. CAN 39¢	MBT INST. BROTH VEG., BEEF CHICKEN 4 1 1/2 OZ. PKGS. 1.00
SARAN WRAP KEEPS FOOD FRESH 100 FT. ROLL 59¢	STUDIO PRINT CORONET TOWELS 3 12 1/2 SHEET ROLLS 89¢ PLUS STAMPS
HANOVER BEAN SALAD 1 LB. 1 OZ. JAR 49¢ 3 BEAN, VEG. OR CRISPY	JIFOAM OVEN CLEANER 16 OZ. CAN 1.19
ALUMINUM FOIL GRAND UNION HEAVY DUTY 37 1/2 SQ. FT. ROLL 49¢	CONDENSED MILK BORDEN'S EAGLE 14 OZ. CAN 49¢
CHIFFON MARGARINE 1 LB. PKG. 57¢ PLUS STAMPS	BUT MILK OR COUNTRY STYLE PILLSBURY BISCUITS 3 8 OZ. PKGS. 29¢ PLUS STAMPS
PITTED PRUNES SUNSWEET 1 1/2 OZ. PKG. 59¢	PINEAPPLE JUICE DELMONTE SOUR CREAM & HORSERADISH, CLAM OR FRENCH ONION 46 OZ. CAN 39¢
KRAFT TEEZ DIPS 2 8 OZ. SIZE 89¢	

(VENDOR COUPON M.R. & D.)

50¢ OFF WITH THIS COUPON TOWARD THE PURCHASE OF ONE 8 OZ. JAR
MAXIM
FREEZE DRIED COFFEE

E. GOOD THRU SAT., NOV. 24 (LIMIT 1-PER CUSTOMER)
REG. RETAIL 79¢ (VENDOR COUPON M.R. & D.)

(VENDOR COUPON M.R. & D.)

20¢ OFF WITH THIS COUPON TOWARD THE PURCHASE OF ONE 33 OZ. BOT.
FINAL TOUCH
FABRIC SOFTENER

E. GOOD THRU SAT., NOV. 24 (LIMIT 1-PER CUSTOMER)
REG. RETAIL 79¢ (VENDOR COUPON M.R. & D.)

(VENDOR COUPON M.R. & D.)

12¢ OFF WITH THIS COUPON TOWARD THE PURCHASE OF ONE 12 OZ. PKG.
TOTAL
WHOLE WHEAT FLAKES

E. GOOD THRU SAT., NOV. 24 (LIMIT 1-PER CUSTOMER)
REG. RETAIL 79¢ (VENDOR COUPON M.R. & D.)

(VENDOR COUPON M.R. & D.)

10¢ OFF WITH THIS COUPON TOWARD THE PURCHASE OF ONE PKG. OF 48
SALADA
TEA BAGS

E. GOOD THRU SAT., NOV. 24 (LIMIT 1-PER CUSTOMER)
REG. RETAIL 45¢ (VENDOR COUPON M.R. & D.)

(VENDOR COUPON M.R. & D.)

10¢ OFF WITH THIS COUPON TOWARD THE PURCHASE OF ONE 5 LB. BAG
PILLSBURY FLOUR

E. GOOD THRU SAT., NOV. 24 (LIMIT 1-PER CUSTOMER)
REG. RETAIL 45¢ (VENDOR COUPON M.R. & D.)

(VENDOR COUPON M.R. & D.)

10¢ OFF WITH THIS COUPON TOWARD THE PURCHASE OF TWO 4 ROLL PKG.
CHARMIN
BATHROOM TISSUE

E. GOOD THRU SAT., NOV. 24 (LIMIT 1-PER CUSTOMER)

DISPOSABLE DIAPERS
KIMBIES TODDLER OVERNIGHTS

PKG. OF 12 **99¢** PLUS STAMPS

JOHNSON'S
BABY POWDER 14 OZ. SIZE **73¢** PLUS STAMPS

ANY TYPE
BRECK SHAMPOO 7 OZ. BOT. **69¢** PLUS STAMPS

STAYFREE
MINI PADS PKG. OF 10 **35¢** PLUS STAMPS

• FROZEN FOODS •

SNOW CROP **ORANGE JUICE** 100% ORANGE JUICE FROM FLORIDA 12 OZ. CAN **53¢**

RICH'S **COFFEE RICH** 2 16 OZ. CTNS. **49¢**

MORTON **HONEY BUNS** 9 OZ. PKG. **43¢**

GRAND UNION **COOKED SQUASH** 2 12 OZ. PKGS. **29¢**

GRAND UNION FROZEN MIX 'EM OR MATCH 'EM SALE

GREEN BEANS CUT 9 OZ. PKG.

GREEN BEANS FRENCH 9 OZ. PKG.

PEAS AND PEARL ONIONS 10 OZ. PKG.

PEPPERS DICED 10 OZ. PKG.

YOUR CHOICE **4 FOR 99¢** PLUS STAMPS

• BAKED GOODS •

FRESHBAKE KING SIZE **BREAD** 2 22 OZ. LOAVES **79¢**

NANCY LYNN **ENGLISH MUFFINS** PKG. OF 12 **59¢**

NANCY LYNN **PUMPKIN PIE** 22 OZ. SIZE **69¢**

NANCY LYNN **APPLE PIE** 22 OZ. SIZE **69¢**

GRAND UNION **POTATO CHIPS** PLAIN OR RIPPLED 12 OZ. SIZE **55¢**

• FRESH PRODUCE VALUES •

MIX 'EM OR MATCH 'EM

• TANGELOS FLORIDA

• TANGERINES ZIPPER SKIN

10 FOR 49¢

MIX 'EM OR MATCH 'EM SQUASH

ACORN BUTTERNUT BUTTERCUP HUBBARD **2 POUNDS 25¢**

• HOLIDAY BAR •

WALNUT MEATS 1 LB. **1.00**

DIAMOND WALNUTS 1 LB. **89¢**

FRUIT CAKE MIX 1 LB. **69¢**

DATES 1 LB. **59¢**

CALIFORNIA **PASCAL CELERY** 29¢

WALDORF **TOSSED SALAD** 8 OZ. BAG OR COLE SLAW 10 OZ. BAG **39¢**

UCEAN SPRAY-FRESH **CRANBERRIES** 1 LB. BAG **39¢**

CANADIAN WAXED **RUTABAGAS** 2 LBS. **29¢**

CANNON NO-MON SHEETS and CASES

LAST WEEK!

ALL AVAILABLE ITEMS NOW ON SALE

TWO PACKAGES WITH EVERY \$10.00 PURCHASE FOUR WITH \$15.00, SIX WITH \$25.00 ETC.

DOUBLE STAMPS EVERY WEDNESDAY!



With the Holidays approaching there will be many special events to attend.

You will want to be at your most appealing and we have for you — gifts for the Hostess — toiletries for "The Man In Your Life" — fragrances for you — the latest fashion women's apparel — Eva Gabor wigs and hair pieces — cosmetics — facials and costume jewelry to complete the picture.

Hair Dressing is our primary business, however at Aquarius total beauty is the By-Word. Catering to the discriminating woman, a broad range of beautifying goods and services awaits your selection.

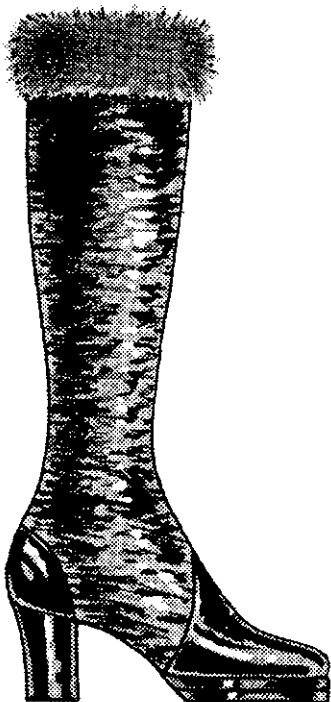
Let Aquarius make this Holiday Season be your most beautiful.

**Aquarius
Beauty
Salon**

2 SALISBURY STREET
DELMAR, N.Y.

439-7018

WARM AND WEATHERPROOF BOOTS FOR ALL!



PURDUE

If you prefer the flat casual look then the Purdue is your boot. It's yours in 11" height. Long pile fleece lining keeps your feet toasty warm, and here's the best part... it's waterproof all the way.

**FROM
19.00 TO
32.00**

T. Arthur Cohen
SHOE SPECIALISTS
33 Maiden Lane, Albany, NY 12207
463-4518
Open 9 to 5 daily

fessors Sefton Temkin, Sarah Cohen and Melvin Urofsky from SUNYA, Samuel Lasko, Principal of Hebrew Academy and Howard Picker, teacher at Hebrew Academy and Temple Israel, who will each

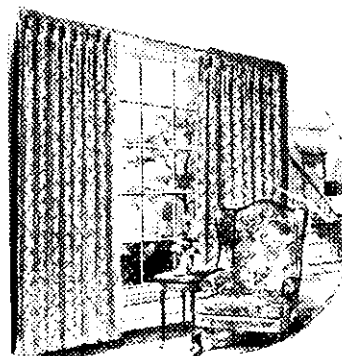
talk on a different topic but whose unifying theme relates to Judaism.

DRIVE SAFELY SAVE CHILDREN'S LIVES



GEORGE TOWNSEND, left, Exalted Ruler of Bethlehem Elks Lodge #223 presents Mr. Nicholas Lanza, President of the Albany County Association of Retarded Children, a check in the amount of \$1377. The money was raised by the Elks at their 3rd Benefit Dinner-Dance held at the lodge on Nov. 3. Also shown from left to right; John Nichols, District Deputy Grand Exalted Ruler; Kenneth Brooks, State Vice President; Al Danker Past State Vice President and Master of Ceremonies; Mrs. James Caniano, Past President of the Association; and Martin Rubin, Director of the Association.

Riccardo Photo



**BELIEVE IT OR NOT
— THERE'S STILL
TIME TO GET
DRAPERIES MADE
IN TIME FOR
CHRISTMAS —**

If you've been pressed for time and just haven't got around to it, call or stop in at **Delmar Decorators —**

Fabric selections are at their peak, and we can get that bright new drapery for you in time for the holidays — and install it for you, quickly, expertly.

COME IN OR CALL —

DELMAR DECORATORS

DELAWARE PLAZA

439-4130

TAX SCHOOLS

Accountants, tax advisors, bankers, attorneys and farmers who anticipate troubles with farm tax returns will welcome an "income tax school" to be held in their local area.

The "schools" are conducted annually by the Department of Agricultural Economics at the N.Y. State College of Agriculture and Life Sciences, Cornell University, in cooperation with Cooperative Extension personnel.

Their objective is to make farm income tax reporting more complete, accurate and responsible. A second goal is to improve the farmer's ability to practice tax management. The tax information presented at the meetings changes constantly to conform with new state and federal regulations. A one dollar registration fee is charged. Extension economist, Stuart Smith and Robert S. Smith, professor of farm finance, are assembling the teaching materials and will conduct the conferences. Persons having questions concerning the tax schools should contact their local county agents. The tax school for this area will be held on December 19 at the Resources Development Center, Martin Road, Voorheesville.

STORE THIEVERY SEEN BOOSTED BY PRICES

Retailers are girding to cope with the largest horde of shoppers yet this Yuletide buying season.

"Store thievery rises with surges in the cost of living," observes C. W. Weatherhead, Albany, New York branch manager of Burns International Security Services, Inc.

"Higher price tags on almost everything today means more people will succumb to the temptation to steal." Stores are making a great effort to deter would-be shoppers by impressing them with

Act II
BEAUTY SALON
 381 Delaware Ave., Delmar
 Janie Duquette • Lillian DuBois
439-6868

... NOW OPEN TO THE PUBLIC ...
 Specializing in Banquet Facilities for Special Events
 Call: Mrs. Robilotto, 439-3392 for Reservations
Tall Timber Country Club
 Hilton Road, Slingerlands



Soft, silky curls and healthy, glowing hair. It's part of the natural look. Feel totally feminine. Let us introduce you to a beautiful new hairstyle. Call.

PRE-HOLIDAY SPECIAL
\$20 Perm \$13.50
 (NORMAL HAIR ONLY)

PAULINE'S Style Centre
 PAULINE GIBSON
 412 Kenwood Avenue Phone: HE 9-1217

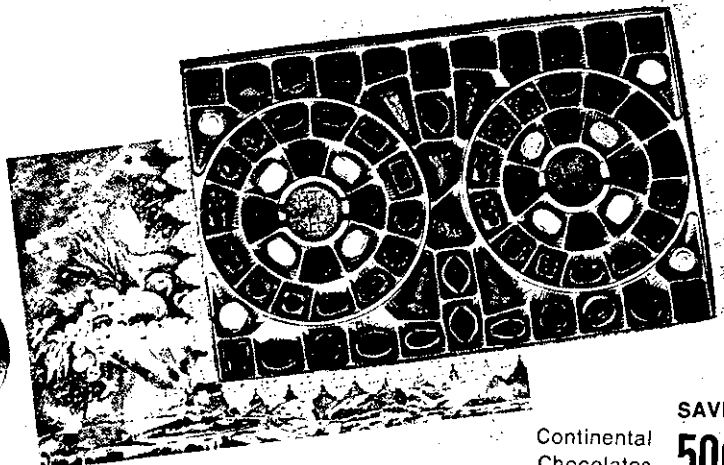
Barton's
 Bonbonniere
 continental chocolates
 NEW YORK • LUGANO, SWITZERLAND

PRE-HOLIDAY SAVINGS



Gourmet Fruit Cake
SAVE 70¢

2 lbs. regularly \$6.50



SAVE 50¢
 Continental Chocolates

1 lb., 6 oz. regularly \$4.45

Now Only \$5.80 **Now Only \$3.95**
Elsmere Pharmacy INCORPORATED

99 Delaware Ave., Elsmere (next to Albany Public Market) - PHONE 439-5491

SAVE! SAVE!

'73

CHEVY'S
CHEVELLES
NOVA
CORVETTES
VEGAS
CAMAROS
MONTE CARLO

**We'll Deal Your Way . . .
Regardless!**

WE LEASE ANY MAKE CAR OR TRUCK FOR LESS!

**MARSH HALLMAN
CHEVROLET, Inc.**

781 CENTRAL AVE. 489-5551

Open Daily 'Til 9 P. M. Friday-Saturday 'Til 6 P. M.

Where More People Buy For Less!



Harriet and Charles Loftus (Siena '41), 73 Kenaware Avenue, Delmar dance to the music of the Tommy Ippolito Quartet at the recent President Club Reception at Siena College, Loudonville.

Enjoy Spring in the Orient

**Escorted departure from
Albany on May 2, 1974**

ESCORTED BY BOB IRISH OF JOHN G. MYERS TRAVEL

FEATURING:

- Round trip economy class jet air transportation based on Group Inclusive Tour Basing (GIT) air fares.
- Accommodations with private bath at deluxe hotels.
- Full American Breakfasts
- "Bullet Train" to Kyoto.
- Meeting and transfer services between airports, hotels and train stations, including portorage.
- Transfer of two pieces of baggage up to 44 lbs. by air and on land.
- Comprehensive sightseeing program in each city.
- Optional Table d'hote Dinner plan.
- Optional Honolulu Extension.

\$1347.00

Single Supplement \$135.00 • Optional Dinner Plan \$80.00
Honolulu Extension \$50.00



37 North Pearl St.
Albany, New York
434-4131

210 Delaware Avenue
Delmar, New York
439-7671



the idea they are in kind of a goldfish bowl.

Concave, convex and two-way mirrors, closed circuit



RICHARD M. ROSENBAUM, Chairman of the New York Republican State Committee, will be the speaker at the 14th Annual Dinner of the Bethlehem GOP. Neal L. Moylan, Commissioner, Department of Commerce, will be the master of ceremonies. The dinner will be held on December 1 at the Thruway Hyatt House. Tickets are available from GOP Committees, or from Merwyn K. Atwood, 107 Delaware Avenue, Delmar. Mr. Atwood is Ticket Chairman. State officials, as well as elected Republican candidates will be in attendance.

television systems that can sweep aisles and zoom in for closeups, electronic anti-pilferage merchandise tags and uniformed guards are very much in evidence.

The objective is to prevent shoplifting, rather than prosecute offenders. An assortment of clever thieves uses stores during the holiday shopping season as their happy hunting grounds:

- Package and purse lifters, who pick up anything laid down by busy shoppers.
- Till tappers, who work in teams and distract cashiers when tills are open. A bundle of bills is quickly pulled out without the cashiers knowing. The same distraction technique is used to steal jewelry and other valuables.
- Paper hangers, who rush inexperienced holiday personnel into accepting or cashing worthless checks.
- Pickpockets, who relish crowds that make their work much easier.
- Ticket switchers, who take tags off cheaper items and switch them to expensive ones.

Some store security chiefs say juveniles are involved in the "fad" of shoplifting to emulate their peers, accounting for 50 percent of all those caught. The large number of juveniles apprehended indicates to some psychologists that offending youngsters want to be caught as a means of gaining parental attention.

This year the Burns security specialist expects more older persons to yield to the urge to steal.

"Retirees on small fixed incomes are finding difficulty in making ends meet and unhappily may be involved in increasingly numerous thefts, particularly of foods," he said.

Professional shoplifters called "boosters" account for an estimated 10 percent of store losses, but they are more difficult to catch than amateurs.

LUXURY FOR HIRE

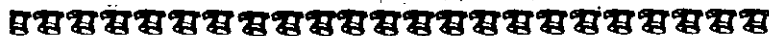
434-8921

CADILLACS

Hourly Rates or Miles
(No Minimum)

AMERICAN EXPRESS
ACCREDITED

*Executive
Limousine*



Extraordinary

ANTIQUES



**Exciting
Collection
for Christmas**

A decorator's dream come true ... our exciting collection of furniture, prints, paintings ... just to name a few of our interesting finds.

Come in and browse through our unique assortment of old-time gems that can accent any home decor.

- Punch Bowls • Silver Ladle • Decanters
- Cut Glass • Lamps
- Marbletop Coffeetables
- All kinds of Pine Furniture

Jeanne Van Hoesen

67 Adams Place, Delmar
HE 9-1021



**TRIPLE A
FARMS**

61 COUNTY LINE RD.
Schenectady • 355-7054

QUALITY HORSES SOLD

TRAIL RIDES DAILY

**300 ACRES OF
SCENIC TRAIL**

**ENGLISH & WESTERN
LESSONS**

**WESTERN & ENGLISH
TACK SHOP**

Snack Bar Open

100 Stalls for
BOARDING

OPEN MONDAY THRU SUNDAY 9 to 9

A CHRONOLOGICAL HISTORY OF THE VOORHEESVILLE SCHOOLS

by Dr. William C. Brayden
Supervising Principal

1823 — The first school established in the Town of New Scotland was a one room building located in the Village of New Salem, the exact site is uncertain, built in 1823.

1826 — In 1826, the Village of Voorheesville felt the need for its own school purchased a 1/4 acre site at the location of the now existing grade school. The budget that year was \$30.

1827 — A wood structure was erected on that 1/4 acre

site. The budget that year was \$46.50.

1828 — Fifteen dollars was appropriated for an addition to the one room structure. Evidently the original plan either didn't provide for or couldn't afford an outhouse.

1866 — At a cost of \$800 a one room brick building was built replacing the wooden structure.

1892 — A second room was built of wood providing for a second teacher. Enrollment that year was 48 students. The total school taxes collected during the period from

1856 to 1892 amounted to only \$600.

1903 — A third teacher was added and it was necessary to rent a classroom in a private residence next door to what is now Ricci's store for that class.

1911 — The third room was added to the 2 room school building.

1921 — Clayton A. Bouton was hired as principal of the 75 pupil school with 3 teachers including Mr. Bouton.

1929 — At a cost of \$125,000 a new building was erected behind the 3 room school and the old building was torn down. This was then the most modern school in New York State. It was so interesting and ahead of its time that it drew visitors from all over the Capital District. It contained such features as a combination auditorium and gymnasium which, at that time, were considered to be extravagant features. That building is the present main section of the elementary school.

1931 — A ninth grade was added. Up until this date students continuing to high school grades went to Delmar, Albany or Altamont.

1939 — The first school bus was purchased. Mr. William Munyan was the driver.

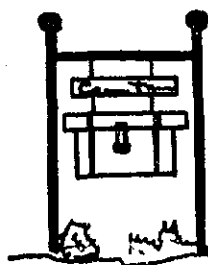
1941 — A big year in the district history. The first graduation class with 9 seniors started our modern history. That year saw the centralization of the nine small districts into one central system.

1941 — The school, already crowded, was forced to seek outside facilities.

1949 — The Kindergarten met at the Methodist church. Home Economics classes met in a private home. The 1st and 2nd grades met in a building behind that home and Shop classes were in a local garage. Students walked to the main building for lunch.

1958 — The new High School building was occupied. Building cost above \$1,000,000. Student enrollment in the district was 897.

What's new in downtown Altamont?



the Country Trunk

unique gifts for your friends & yourself

Noon to 5 P.M. everyday except
Sunday & Monday

Fuhrman's inc.
JEWELERS • SILVERSMITHS

67 STATE ST.
DOWNTOWN ALBANY

Daily 9:30-5, Thurs. 9:30-6
Closed Saturday

1963 — With enrollment now at 1,190 pupils, the elementary school was added at a cost of \$625,000.

1966 — Addition was made to the high school and student enrollment reached 1,301.

1972 — Enrollment in the district reached a peak of 1,940 pupils.

1973 — Building the high school with its addition and the additions to the foresighted elementary proved to be fortunate decisions for the future of the town. Built in favorable cost years, they proved capable of handling the growth of the community to this current year and with the enrollment this year 35 less than 1972, they should be adequate until the town expands further.

HERE COMES NO FAULT

The countdown has started — not only for the number of shopping days remaining until Christmas but also for the time left before no-fault auto insurance takes effect in New York State on Feb.

The law, the Comprehensive Automobile Insurance Reparations Act, is a complicated insurance reform measure affecting the state's more than eight million licensed drivers who in less than three months will be faced with radical changes in the way they are compensated for auto accident injuries.

Enacted early in 1973, the law requires that all vehicles (with the exception of motorcycles and snowmobiles) registered in the state have both no-fault insurance, also called Personal Injury Protection (PIP), and liability insurance.

To assist motorists in fully understanding the basic requirements and provisions, the Insurance Information Institute publishes below the answers to some of the most frequently asked questions about the new law.

The Institute recommends that readers with further questions contact their insurance representatives...before the zero hour.

DESIGNER FABRICS at discount.

Fabulous woolsens, silks, cottons, linens, synthetics from European, Asian, domestic sources. All at discount, many at wholesale and below. Open 10-5:30.

Open Sundays 12-5.

Knight's

201 South St. (U.S. 7), in the heart of Bennington, Vt.

YOUR INSURANCE COVERAGE IS AN IMPORTANT INVESTMENT

Our Years of Experience and Variety of Insurance Programs To Offer You Are Important in Getting the Best Coverage.

FRANK M. STOLZ AGENCY INC.

135 MAIN STREET, RAVENA, N.Y.

TEL. 756-2161



- RICH SCULPTURED AND PATTERNED BROADLOOMS NOW SPECIALLY PRICED!
- 100% LONG-WEAR, EASY-CARE NYLON PILE!

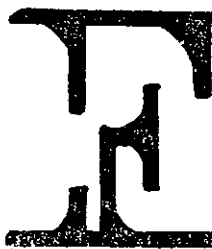
SAVINGS

UP TO

20% & 30%

ON LEES, BIGELOW, ALEXANDER SMITH & MONARCH CARPET

High-styled carpets by Alexander Smith. We have these exceptional carpets at the prices we're famous for. You benefit from these fabulous values—some of the best we've ever offered! Magnificent deeply-sculptured or brightly-patterned broadlooms of rugged, easy-to-clean nylon. First quality carpets—not seconds, remnants or drops—in all the latest fashionable colors. Come see! All sale prices include flawless installation over heavy crown cushion. Visit today and Save!



Bigelow, Lees, Alexander Smith, Monarch Carpeting

FRAIM'S house of carpets

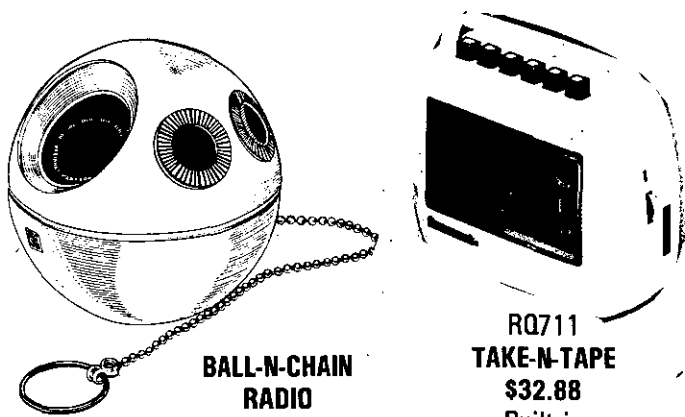
243 DELAWARE AVE., DELMAR—439-9979

Mon.-Fri. 10-5 • Wed. 7-9 • Sat. 'til 3

PARKING IN REAR

Colorful world of PANASONIC®

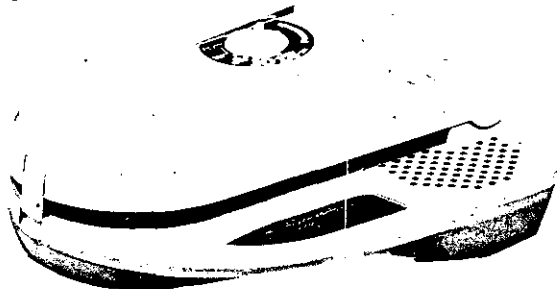
(Every piece shown in color)



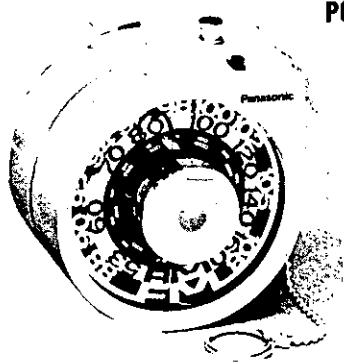
**BALL-N-CHAIN
RADIO**
\$11.88

**RQ711
TAKE-N-TAPE**
\$32.88
Built in
Condensor Mike

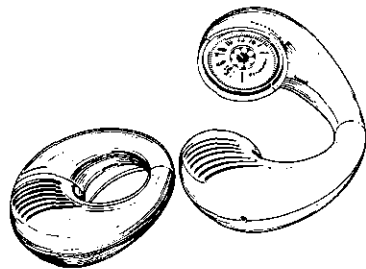
**PANASONIC
BOLERO R-70**



**SG200 Funny Graph
PORTABLE PHONO**
\$34.88



**RF93
Rolling Tone
AM/FM RADIO**
\$24.88



**Panasonic R-72 TOOT-A-LOOP
TRANSISTOR RADIO**
\$9.88
Special, Special
Price

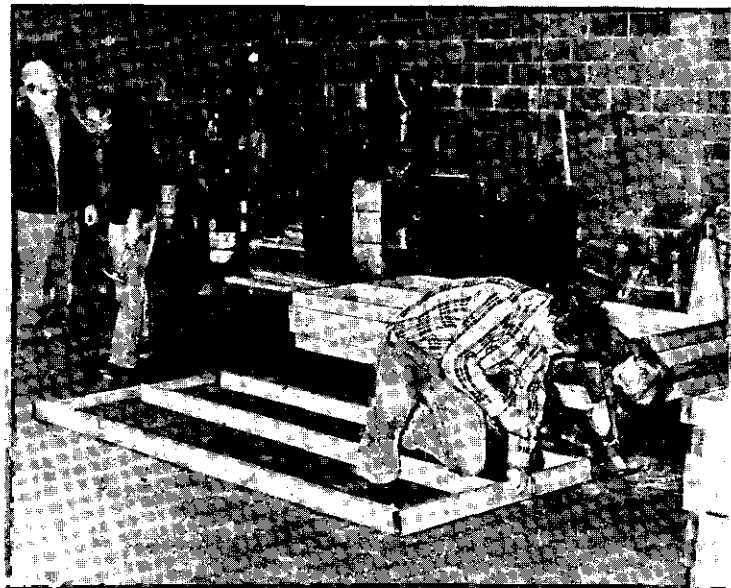


**HILCHIE'S
HARDWARE
& GIFT SHOPPE**

235 DELAWARE AVE. — DELMAR



IT WAS A VERY BUSY DAY at the Town Garage on Adams St., Delmar last Saturday as parents, friends and recreation officials met to build hockey boards which will soon be assembled at a prepared site at El Avenue Park. It was part of the preparation for the Youth Hockey Program for boys and girls through age 12. The program will be in operation this winter. Solid organization and high quality instruction will be important features. In the above picture, left to right, are: John Ryan, Nelson Potter, Bob Pike, Mike Ryan, J. D. Hills and Joel Langlois. Below Lloyd Wilson and Tom Burnett drive nails like pros. Jim Fuller Photo



CUSHIONS SAGGING?
Perk up your furniture with new foam fills. Bring in your cushions, we'll fill them in a day.

**Delmar
Decorators**

439-4130
DELAWARE PLAZA, DELMAR

LUMBER

BUILDING MATERIAL

CALL US
WE DELIVER
765-2377

**W.W. CRANNEL
LUMBER**

Voorheesville

COVER STORY

TOWN OF BETHLEHEM BOOKLET PUBLISHED

ANN BRANDON, PRESIDENT, Albany County League of Women Voters, presents a copy of the league's new booklet, "This is the Town of Bethlehem," to Supervisor Bertram E. Kohinke.

The book is the result of a year of research about the Town by the members of the Bethlehem Unit of the League.

Rita Grossman, the leader of the study group, said, "Our goal was a handbook for town residents to use when seeking information about how their town is governed or what services it provides." Other committee members were: Ann Brandon, Janet Butlin, Ann Marie Dullea, DeeDee Gunnell, Anne Cohen, Edith Gollump, Ellen Wilkenson and Andree Marr.

Included in the study is a brief history of the Town and a description of the organization and structure of its government and schools. The Town's library, parks, museum and its recreation program are also described. A useful list of the names and phone numbers of all the town and school officials and services is included.

The booklet is available for 50¢ at the Town Hall, the Altamont Book Den at the Four Corners and at Grover's Stationery Store. Copies also may be obtained from Janet Butlin at 439-2210.
Jim Fuller Photo

Large selection of Crewel Kits, Needlepoint, Hooked Rugs and Accessories. Beautiful afghan and sweater kits to make up or give as gifts. Come in soon while selection is at its peak.

CALL 439-4130

DELMAR DECORATORS

Delaware Plaza, Delmar



CHRISTMAS TREES

Sheared Scotch Pine - up to 9'
White Spruce - up to 5'

Wreaths — \$3.50

Come Cut Your Own
Any TREE for \$4.50

Free Hayride

GEORGE VAN ETTEN

Rt. 156, Knox, N.Y.
5 mi. from Altamont
Call 872-1895

Public Skating Lessons

1:00-3:00 P.M. Children (12 & Under) • 4:00-6:00 P.M. All Ages



THE FUN WAY TO FITNESS

Group Instruction — 9 week course

1st Term	2nd Term
Sunday	Sundays
Oct. 28-Jan. 6	Jan. 13-Mar. 17
Tuesday	Tuesdays
Oct. 30-Jan. 8	Jan. 15-Mar. 12
Thursday	Thursdays
Oct. 25-Jan. 10	Jan. 17-Mar. 14

WEEKLY CLASSES: 1/2 hour of instruction per class
Sundays 1:00 P.M. - 3:00 P.M. - 4:00 P.M. - 6:00 P.M.
Tuesdays 9:30 A.M. - 11:30 A.M.
Thursdays 9:30 A.M. - 11:30 A.M.

Classes minimum of 6 — maximum of 10

For information call 270-6262.

Box office open Monday-Saturday 9 A.M.-5 P.M.; Sunday 12 Noon - 6 P.M.



FIELD HOUSE
BURDETT and PEOPLES AVE.
TROY, N. Y. 12180

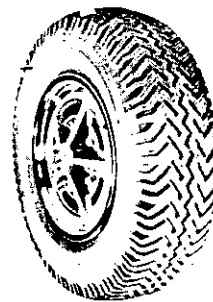
November SNOW TIRE SALE

(LOWEST PRICES IN TOWN)

SUPER SHELL SNOWSHOE

- 4 Ply Polyester Construction
- Extra Wide Tread for Greater Traction
- Deep Tread for Pulling Power
- Open Groove Design with Self Cleaning Features

Also Goodyear Tires



BILL STEWART'S SHELL

167 DELAWARE AVE., DELMAR • 439-5091

SPORTHAVEN LANES

Open Bowling

Wednesday Evenings — 9:00 P.M. 'til closing

439-1110



Here's Something Worth Shouting About!

Our extra care in your remodeling is what makes the difference

FOR A FREE ESTIMATE
CALL ANYTIME
767-9387

HRH
DESIGNS, INC.

HOME REMODELING HEADQUARTERS
ONE CALL DOES ALL
ESTIMATES • FINANCING • CONSTRUCTION

- Kitchens
- Bathrooms
- Heating Systems
- Family Rooms
- Roofing & Siding
- Room Additions
- Floors & Carpets
- Doors & Windows
- Interior and Exterior Work

ROUTE 9W • SELKIRK, N.Y.

NO FAULT
(continued from page 29)

Q. What is no-fault auto insurance?

A. It is a type of insurance under which persons injured in auto accidents can collect for their medical bills, lost wages and other expenses from their own insurance companies regardless of who was at fault in the accident.

Q. How does no-fault differ from liability insurance?

A. Under the bodily injury liability insurance system you must prove that the other driver was at fault before his company pays you any medical and wage losses.

Q. How do I get no-fault auto insurance?

A. You will receive it automatically from your insurance company. You will be mailed a

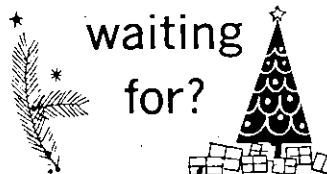
The TOLL GATE ICE CREAM

in Slingerlands will be closed
from 2 P.M. Wed., Nov. 21
until 11 A.M. Mon., Nov. 26

This will enable all our employees to enjoy a long Thanksgiving Weekend — and we hope your turkey too, will be the best ever —
The Zautner Family

HAVEN'T STARTED YOUR XMAS SHOPPING YET?

What are
you
waiting
for?



START NOW
with . . .

1. Our Convenient Layaway
2. Great Value & Selection



DELMAR
DEPARTMENT
STORE
4 CORNERS



Pharmacy Topics



by
Tom
Longtin

The General Motors executive building in New York features a survival stretcher system equipped with a heart-lung resuscitator, a defibrillator, pacemaker and electrocardiograph.

...

A new safety latch, simple and inexpensive, protects young children from drugs and poisons in cabinets. It's simple for adults to use, but requires strength and dexterity.

...

Your health and safety is our prime concern at

*New Scotland
Pharmacy, Inc.*

Phone 439-6551
Stonewell Shopping Center
Slingerlands, N.Y. 12159

This Year give Musical Gifts



COMPLETE STOCK OF
BAND INSTRUMENTS

- Olds
- Bundy
- Conn
- Gemeinhardt
- Guild and Martin Guitars
- Ludwig Drums
- Violins — Cellos — Bases

Largest selection of musical accessories and supplies in the City — also many hard-to-find musical items. Repair shop and instrument rentals.

JOHN KEAL'S

MODERN MUSIC CO.

22 Central Avenue, Albany
Phone 449-5214

special Personal Injury Protection endorsement for attachment to your present auto liability insurance policy.

Does the new insurance coverage apply if I'm insured in the New York Auto Insurance (Assigned Risk) Plan?

Yes. Cars insured in the New York Assigned Risk Plan will be covered by the new no-fault insurance protection.

Why do I still need bodily injury liability insurance?

Because lawsuits will still be permitted in cases involving (1) death or serious injury such as disfigurement, loss of a limb or loss of a bodily func-

TENNIS RACKETS
 Restrung — Regripped
VIOLINS REPAIRED
 BOWS REPAIRED
 C.M. LACY 3 Becker Terr.
 439-9739

Come meet our new chef — **STANLEY BAUMHAUER** — He's terrific!
 Call: Mrs. Robilotto, 439-3392 for Reservations
Tall Timber Country Club
 Hilton Road, Slingerlands

SPOTLIGHT CLASSIFIEDS

WE MAKE DECORATING EASY FOR YOU, FROM START TO FINISH!



The Light Touch

It's a wise father who knows his own child — particularly with today's hair styles.

The human body has several hundred muscles, mostly to tell us we shouldn't have jogged so far.

Freckles are charming — but freckled folks would appreciate them more if they had to buy them at the drugstore.

We all know it isn't human to be perfect, and many of us take advantage of it.

Life is like a round of golf. As soon as we get out of one hole, we head for another.

Why not head for Delmar Lumber and let us help you with your holiday redecorating plans.

Helping you get the best possible painting results is our business! Bring in a color sample of drapes, rugs or slip covers and we'll mix it in finest quality TRU-TEST PAINTS...in minutes. We'll help you choose the right Tru-Test Paint finish and color from our 1,240 custom colors...and we'll also give you decorating ideas and show you how to use the paint and tools to make painting easier. Come in and let's create a "new room" for you.

See our 1,240 Custom-mixed Colors including 1974 "House & Garden" Magazine selections!



DELMAR LUMBER

340 DELAWARE AVENUE
 DELMAR • PHONE: 439-9968

OPEN LATE
EVERY NIGHT
'TIL CHRISTMAS

AT
Rosenbaum's
 GIFT GALLERY

Cor. Rt. 9R & Old Loudon Rd., Latham

SHOP

10 - 10
 A.M. P.M.

MONDAY THRU SAT.

Directly across from the Coliseum Summer Theater



Schatz



THE Wedding Center

- Invitations
- Announcements
- Napkins
- Matches
- Wedding Cake Boxes
- Plus All Other Stationery And Accessory Needs

WE FEATURE
CRANE'S INVITATIONS

24 Hour Service
If Desired

Schatz

Mohawk | Colone
Mall | Center
Open 9:30 to 9:30 Daily

tion, (2) injuries requiring \$500 or more in reasonable and necessary medical care, or (3) injuries resulting in more than \$50,000 in medical and wage losses.

Q. How much Personal Injury Protection do I get?

A. At least \$50,000 for you and every member of your household. Your company will probably sell you more than \$50,000 in coverage if you wish.

Q. Do my no-fault benefits apply outside of New York?

A. No. You and your family are covered only if you are injured in an auto accident or struck by an automobile while a pedestrian in New York.

(continued in next weeks Spotlight)

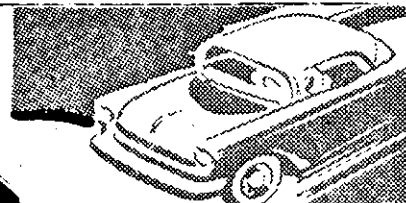
We'll make your
motor
sing



- * Engine Tune-up
- * Front End Alignment
- * Automatic Transmission Service
- * Modern Equipment
- * Skilled Mechanics

BAILEY'S GARAGE

Phone Delmar HE 9-1446
Oakwood Rd., Elsmere



HOME REPAIRS

Remodeling from A to Z. You can now have ALL your repairs & improvements completed efficiently & economically. Call after 6 p.m. Ed Kaine 768-2959

We're Packed with
HOLIDAY CHEER

Think BRINS for clothing when you start on your Christmas list. The store that is never satisfied till you are. Where savings is an everyday word and the latest fashions are expected to make this a pleasant experience.

• All on one floor •

Most Famous Brands
available


Prin's

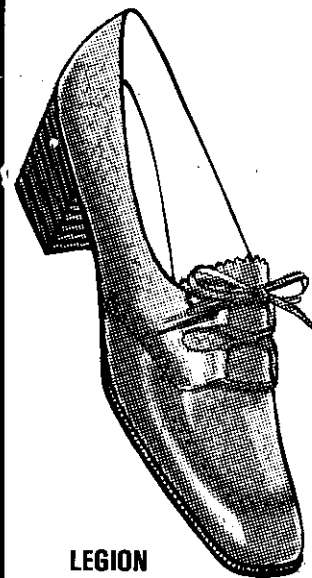
Delaware at 2nd Ave.
Albany
HO 2-4235

HOURS: 10:00AM - 6:00PM MONDAY THROUGH SATURDAY

SHUTTLE HILL HERB SHOP

256B DELAWARE AVENUE DELMAR, NEW YORK 12054
corner of Delaware & Elsmere Ave., behind Pharmacy

SHUTTLE HILL CULINARY HERBS & HERB BLENDS	SPICES -and- SEASONINGS	LARGE SELECTION of FINE TEAS HERB TEAS
JAMS and JELLIES	ANTIQUE COLLECTABLES  SHAKER-INDIAN- NANTUCKET BASKETS	CARDS and NOTEPAPERS
SHUTTLE HILL HERB-WINE VINEGARS HERB MUSTARDS	HERB PLANTS UNUSUAL HOUSE PLANTS SEEDS	DRIED ARRANGEMENTS DISTINCTIVE GIFTS



LEGION
black calf or
tan calf
\$30

FOOT SAVER

FAMOUS

SHOE STORE
71 NORTH PEARL ST

Master Charge
BankAmericard
Park 'n Shop

Mon.-Sat. 9-5
Thurs. 'til 6:45

TOO LATE TO CLASSIFY

MERCHANDISE FOR SALE

LOW TIRES — H78-15, Goodrich Silver Town Belted, w.w. studded, mounted on rims, \$45.00. 439-9733.
DINING CHAIR SET, 2 leaves, 6 chairs, excellent condition, \$60.00. Dinette set, 2 chairs, \$10.00. 439-1715. 2t1129

The deadline for Spotlight Classified Ads is Friday afternoon preceding publication the following Thursday.

JOIN
"THE REAL ESTATORS"

We have the listings —
 plenty of open houses —
 plush surroundings —
 highest commission paid —

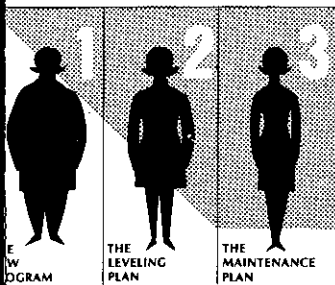
It's a strong foundation. Help us build our sales force. Call Marshall Danto for a confidential interview.

439-7625

heritage

Three programs in one to help you lose weight and keep it off!

The Weight Watchers program.



489-8323

WEIGHT WATCHERS

WEIGHT WATCHERS AND W are registered trademarks of WEIGHT WATCHERS INTERNATIONAL, INC. GREAT NECK, N.Y. WEIGHT WATCHERS INTERNATIONAL, 1977

PRE-HOLIDAY SALE

SAVE

20%

OFF SPORTJACKETS



IT'S KELLY'S PRE-HOLIDAY sport-jacket event. Hundreds of our famous-maker jackets all 20% OFF of our regular — already LOW, FACTORY-DIRECT PRICES. Look great in tweed, shetland, textured polyester. Solids, double knit plaids and patterns.

REG. \$69.75 TO \$114.75

\$55⁷⁵ TO \$91⁷⁵

AND ...

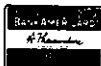
WHEN YOU BUY A JACKET, you can take 20% OFF ON SLACKS. Kelly has an impressive selection. *(Slacks at 20% off only when purchased with a sportjacket).

REG. \$16.50 TO \$28.50

\$13²⁵ TO \$22⁸⁰

SHOP KELLY'S factory store

Tues., Fri. 9-9 P.M.
 Sat. 9-5:30



Troy's Famous Factory Store 621 River Street 272-2022 Parking Always Ample

Spotlight

CLASSIFIEDS

439-4949

439-4949

SPOTLIGHT CLASSIFIEDS ARE 15¢ PER WORD (\$1.50 MIN.). DEADLINE FOR FOLLOWING THURS. PUBLICATION IS FRIDAY, 4 P.M. PAYMENT MUST BE MADE IN ADVANCE. TEL. 439-4949.

ALUMINUM SIDING

COMPLETE LINE aluminum products. Installation. Local references on request. Guaranteed workmanship, free estimates. Dick Domermuth — 768-2429 tf

ALUMINUM SIDING, new plastic coated all colors in stock, no down payment, 30 year guarantee. Free estimates. Statewide Modernization Corp., 104 Quail St., IV 9-0991 tf

APPLIANCES

Bob Sowers' DELMAR APPLIANCE

Complete line of RCA Victor • Whirlpool

SALES & SERVICE
239 Delaware Ave., Delmar
Phone 439-6723

BLACKTOP

MARIANI'S BLACKTOP driveways, garage floors, sidewalks. Also jennite sealer. 489-2780 tf

BLACKTOP DRIVEWAYS, parking areas, sidewalks, garage floors. Free estimates. 482-5006 or 434-4920. tf

AREA BLACKTOPPING

We specialize in THE HOMEOWNER Driveways, floors, walks, etc. Free estimate — 459-5873

"Our Prices Are Reasonable"
LIUZZI BROS.
Blacktop Specialists
Residential, Commercial,
Industrial — Fully Insured
Free estimate — 869-6973

CABINETMAKER

FURNITURE REPAIR, bookcases, kitchen cabinets, picture frames. Vancans. 439-3541. tf

CARPENTRY

CARPENTRY, stairs, doors, windows, general repairs. Call 6-8 P.M. 756-2019. tf

CARPENTRY — MASONRY — Painting — Repairs — "No Job Too Small". Call Cliff 765-4289. tf

COVENTRY, CARPENTRY, cellar to roof, remodeling, kitchen, garages, additions. 439-6042. tf

CARPENTRY, GENERAL REPAIRS, additions, roofing, kitchen remodeled. 30 years experience. McAlister. 439-5742. tf

CERAMIC TILE bathrooms, slate foyers, free estimates, reasonable prices. 767-2442. 41122

BASEMENTS, KITCHENS, bathrooms, paneling, ceiling, floors, bookcases, stairs. Vancans. 439-3541. tf

CARPET SHAMPOOING

PROFESSIONAL CONSCIENTIOUS shampooing, commercial or residential, reasonable, SMITH ENDEAVOURS. 477-6723. 41129

CHILD CARE

SCREENED BABYSITTERS

Evenings • Overnight • Weekend • or longer
University Family Services, Inc.
(Agency) • 456-0998

MOTHER'S SHOP, visit, take trips. Leave children at lovely country home, anytime 767-9537. tf

LOVELY COUNTRY HOME. 24 hour service. 50¢ per hour. 767-9537. tf

CLEANING SERVICES

CUSTOM CLEANING — General office cleaning. Floors paste waxed; windows. 756-2937. 41212

SPECIAL: RUGS SHAMPOOED, any size living room rug, \$29.50. 756-2937. 41212

DRIVER TRAINING

ALL ALBANY AUTO ACADEMY

66 No. Lake Ave., Albany
Beginners • Intermediates
Classroom Instruction Available
Tuesday, Thursday — 6 to 9
Saturday — 9 to noon
CARS AVAILABLE FOR
ROAD TESTS
Standard & Automatic
Call HO 2-1309

ELECTRICAL CONTRACTORS

DUFFY ELECTRIC — residential & commercial wiring — 24 hour emergency service. 439-5177. tf

G. W. ARNOLD & SON. Residential and commercial wiring. Free estimate. 35 years experience. 465-3065. 151221

FIREPLACE WOOD

SEASONED FIREWOOD, kindling, delivered. 459-6323, 235-1827. 111129

CANELL COAL — the ideal fuel for indoor fireplaces. Liberty Coal Co., 1 Terminal St., 434-1955. 41129

FIREWOOD — hardwood delivered & stacked. 767-2922, 765-4811.

FIRE PLACES — metal units — wood burning, installed in any room. Also Carpentry, General Repairs, Plumbing and Electrical Repairs. Free estimates 465-3773 evenings.

FURNITURE REFINISHED

EXPERT FURNITURE refinishing. Drapes made to order. Also antiques for sale. Phone 766-4664. tf

HORSES BOARDED

RINGS, JUMPS — pastures; lessons English only; call 869-2482 or 482-0626. Roundabout Farm. tf

JOSEPH'S TROUBADOUR STABLES, riding lessons, pony rides. Training. Rt. 9W. 767-9537. tf

INTERIOR DECORATING

INTERIOR DECORATING — Delmar Decorators, Delaware Plaza, Call 439-4130. tf.

INSTRUCTION

PIANO LESSONS
Experienced Teacher —
Classical —

Theory — Keyboard Harmony
For information call 439-0467

JEWELRY

EXPERT WATCH AND JEWELRY REPAIRS. Diamond setting, engraving, wedding and engagement rings, reasonable. Your trusted jeweler. LeWanda, Delaware Plaza Shopping Center. HE 9-8685. tf

MASON WORK

AREA MASONRY

Specialize
Concrete work,
additions, floors,
patio, walks,
foundations

All types of repairs
Chimney, stucco,
slate, waterproofing, etc.
• Free estimate •



459-5873

MASONS INC.

QUALITY MASONRY

Fireplaces • Brick • Block
Plastering

A. Loux — 439-3434
R. Tice — 456-7848

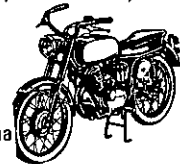
EXPERIENCED, all types masonry, new or repair Guidara. HE 9-1763 evenings.

MOTORCYCLES

DAVE FLACH Sales & Service
(formerly Blaisdell's)

The 1974's
are here!

Triumph, Rupp,
BSA, Rickman,
Hodaka
Coming — Yamaha
Motorcycles



Sales & Service & Parts
Rt. 9W, Ravena • 756-2900

ORIENTAL RUGS

ALL SIZES AND Varieties at importer's price. New, used and antiques; washing and repair; free decorator advice; new Colonial style room; since 1925, Rustam K. Kermani Company 1593C Central Ave., (1/2 mile west of Norway). 869-7829, 439-9419.

PAINTING & PAPERHANGING

VOGEL, PAINTING Contractor, interior, exterior painting, paperhanging. Free estimates. Guaranteed. Insured. JIM HE 9-9718 or John 3-7162.

PAINTING CONTRACTOR: exterior, interior, paperhanging. Insured. Don Vogel. 489-7914, 48370.



BEAUTIFY AMERICA with the
DARON CONTRACTING CORP.
Interior • Exterior Painting
Also Wallpapering

439-4834 • 434-1996

Free estimates, Satisfaction
Guaranteed, Fully Insured

BILL WRISTON

PAINTING
CONTRACTOR
• Fully Insured
Residential Experience
Paper Hanging
459-2537 or 439-316



D.L. CHASE
Painting Contractor
Residential Specialists
Phone 768-2069

TOM SCHALLER
 Interior Painting & Paperhanging — Clean, quality work. Free estimates, fully insured.
439-0413

PERMANENT WAVING
 SPECIALIZING IN Breck, Realistic Rayette and Caryl Richards permanents, hair tinting and bleaching. MELE'S BEAUTY SALON, Plaza Shopping Center. HE 9-4411. tf

PERSONALS
 DUCE with GoBese Tablets & E-Vap "water pills" Voorheesville Pharmacy. 4t1122
 SE WEIGHT with new shape tablets and Hydrex water pills. Warner's Pharmacy, 372 Delaware Ave., Delmar. 3t1122
 IN OR WOMEN, if you are interested in earning \$1,000 per month, part time with only \$3,300 to invest, fully returnable, call collect Mr. Boyd, (214) 243-8001. 4t1213

MOVERS
 L. MOVERS, INC. 439-5210. Local and long distance, no job too small. tf

PIANO TUNING
 APPRAISALS — REPAIRS. Roger DiNucci, 1368 W. Scotland Rd., Slingerlands. 439-2348 tf

PRINTING & MAILING
 SET PRINTING — Mailing Service — Mimeographing, Typing, G. Bloodgood — Mimeo Service, Delmar, N.Y. 439-3383. tf

PLUMBING
B. P. WOOD
Plumbing & Heating
 24 Hour Service
WATERLINE INSTALLATION
SEWER INSTALLATION
BACKHOE SERVICE
 FULLY INSURED
 "NO JOB IS TOO SMALL"
Phone 439-9454

ROOFING
M & V ROOFING
 Glenmont
 ALL TYPES OF ROOFING
 Residential • Commercial
 All work guaranteed.
463-5093

Asphalt, slate, wood shingle, ice slides, gutters, repairs. Van Cans — 439-3541. tf

WINDOW REPAIRS
 GLASS AND SCREEN; wood and aluminum — repaired and replaced. Roger Smith Paints, 253 Delaware Ave. — 439-4468. tf

TREE SERVICE
 HERM'S TREE SERVICE. Call IV 2-5231. tf
 BROWNIE'S TREE SERVICE — tree stump removal. Insured. 456-7660, 456-3373. tf
 HERM'S TREE Service, call IV 2-5231. tf
 TREESCAPE — Arboricultural Services. 439-7147. H.C. Mac Intosh, Prop. tf

TABLE PADS
 TABLE PADS — made to order: Delmar Decorators — 439-4130. tf

WATCH REPAIRING
 EXPERT WATCH AND JEWELRY REPAIRS. Diamond settings, engraving wedding and engagement rings, reasonable, your trusted jeweler, Lewanda, Delaware Plaza Shopping Center, HE 9-9665. tf
 WATCHES REPAIRING, expert workmanship. All work guaranteed. Also engraving, diamond setting watch bands. Harry L. Brown, Jeweler, 4 Corners, Delmar. 439-2718. tf

SNOWBLOWERS
MEYERS
 BICYCLE & LAWNMOWER
 Repair Most Brands
SNAPPER Snowblowers
 Mowers
 1958 NEW SCOTLAND RD.
 Slingerlands • 439-5966

SNOW REMOVAL
 SNOW REMOVAL — Residential & Commercial. Call early and be prepared. Call 767-2760. tf
 RESIDENTIAL & COMMERCIAL — 439-5177, Duffy Electric. 9t1129
 SNOWPLOWING WANTED. Call 439-3224. 7t1129
 SNOWPLOWING — Residential and commercial. Season contracts available. Reasonable. 439-0495 evenings. 6t1129

SKATES SHARPENED
 ICE SKATES SHARPENED — also chain saws, saws, scissors, knives, pinking shears, lawnmowers. 439-5156 or 439-3893. tf

SEPTIC TANK SERVICE
 DELMAR SANITARY CLEANERS. Service Tri-Village area over 20 years. HE 9-1412. tf
 NORMANSKILL SEPTIC TANK Cleaners. We install dry wells, septic tanks, drain fields. 767-9287 tf

SEWING MACHINE REPAIRS
 SEWING MACHINES REPAIRED. Work guaranteed. Delmar Decorators, 3 Delaware Plaza, Delmar. 439-4130. tf
 WELL KNOWN JOHN BESSON repairs all makes of sewing machines, in your home, free estimates. Sells second hand sewing machines, guaranteed for one year. 463-2520. tf


TRUCKING SERVICE
 PIANOS, APPLIANCES, light trucking. Call for free estimates. 456-3155. 3t1129

SNOWMOBILE

All Polaris Snowmobile Models now in stock including the POLARIS TX — the sports car of snowmobiling
 NO MONEY DOWN
 NO PAYMENTS 'TIL DEC. 15
 Sales — Service
 Clothing — Accessories
SHEAR FARM COUNTRY STORE
 Rt. 143, 4 mi. west of Ravena
 Open 7 days a week • 756-2314

ROOFING

 Asphalt, Slate, Built-up, Wood Shingle, Gutters, Ice Slides, Repairs, Insured, Guaranteed.
 FREE ESTIMATES
VANCANS
439-3541

HIGHEST PRICES PAID FOR GOOD USED CARS at **CAPITOL**

 home of 100% guaranteed used cars
 ROUTE 9W, GLENMONT • 463-3141

NICKY'S LAWN SERVICE
 General fall clean-up: mowing, leaf removal, roto-tilling. Firewood: any length — delivered. Private or commercial. Free estimate — 370-3704.

767-2800 439-3349
ELM AVENUE MOWER SHOP
 Selkirk, N.Y.
 "Authorized Factory Service"
 Lawnmowers and Snowblowers repaired and serviced

"IN OUR 53RD YEAR"
residential properties
appraisals
relocation services
land
new construction
guaranteed sales plan
commercial and industrial
division

REALTORS
 264 DELAWARE AVENUE, DELMAR • 439-9921

RELOCATING? TRANSFERRED?
 We are the exclusive representative for RECOA, INC., a nationwide and Canada service to help you buy or sell Real Estate. At no cost or obligation you deal with trained Real Estate Professionals and not machines. Let us explain this FREE Service.
KLERSY-ROSS REALTY, INC.
439-7601
 A NUMBER IT PAYS TO CALL

GARAGE SALE

Tennis table, mangle, man's jacket — large, records, stereo, camera, jewelry, king-size bottom sheets — new, fish rods, figurines, household items — many new, ladies' coats and knit suits — size 12-14.

Sat. and Sun. — Nov. 24-25, 9-4
48 N. Helderberg Pky.
Slingerlands

Subscribe to The Spotlight

HELBO ROOFING

74 Bassett St., Albany, N.Y.
465-2513

All kinds of repairs & slate repairs, ice slides. **ALSO SNOW PLOWING.** Free estimates

BILL'S LOCKSMITH

Key Duplicating & Locksmithing
• 439-2720 •

NEMER



Rt. 7 West of Latham Circle
Latham, N.Y. • 785-5581

THE TIRE STORE WITH A DIFFERENCE NASSAU TIRE CO.

257 Delaware Ave.
Delmar, N.Y.

DISTRIBUTORS OF
MOHAWK & BRIDGESTONE
TIRES
439-0322

MERCHANDISE FOR SALE

IT'S TERRIFIC THE way we're selling Blue Lustre to clean rugs and upholstery. Rent shampooer \$1. Delmar Lumber, 340 Delaware Ave., Delmar.
KNAPP SHOES. Cushioned comfort. H. Russell Weiss, Glenmont 12077. 465-6091. 201126
CITIZENS BAND (C.B.) Radios — fire and police scanning monitors, every make and model of radio and accessory available and in stock at discount prices. Four Wheeler Communications, 11 Colvin Ave., Albany. 459-5119. 101129
PIANOS! ORGANS: 150 in stock. Brown Piano Organ Mart. 459-5230.
MILLIONS OF RUGS have been cleaned with Blue Lustre. It's America's finest. Rent electric shampooer \$1. Hilchie's — 235 Delaware Ave., Delmar. 511129

FURNITURE

Our low-cost operation policy enables us to bring you BIG SAVINGS on NEW furniture, rugs, bedding.

BURRICK FURNITURE
560 Delaware Ave., Albany

Just across the Thruway Bridge in Albany **465-5112**



REPAIRS — Model Trains, Race Car Sets, Toys, Small Appliances. Expert work, all work guaranteed. Call Chuck 439-3496 evenings & weekends.

MINI COUNTRY STORE — Trinity United Methodist Church, Lark at Lancaster Sts. Wed., Nov. 28th, 9:00-6:00. Christmas items, plants, handcrafts, baked goods, candy, lunch. 211122

FRESH BROWN EGGS, \$1.00 per dozen at the Health Shop, 282 Delaware Ave., Delmar. 439-5580.

LARGE SECTIONAL, 4 walnut tables, kitchen set with 4 chairs. 456-8461.

ARMENIAN, SYRIAN & Colby Cheese at the Health Shop, 282 Delaware Ave., Delmar. 439-5580.

SHORT FISCHER SKHS, Cubco bindings. Excellent condition, \$15.00. 439-2987.

30% REDUCTION on Aloe Vera & Queen Helene Cosmetics at the Health Shop, 282 Delaware Ave., Delmar. 439-5580. Good for Christmas presents.

ORGAN, "THOMAS", full pedal-board, excellent condition, \$975.00. Call evenings 439-2728.

EATON E-Z BATH — lifts you in and out of the bath. Call after 6, 768-2295. 411213

SNOW TIRES — H78-15". Pair for \$15.00. 439-5659.

GARAGE SALE — November 24 and 25, Route 32, 2nd house right hand side after Unionville Road, Feura Bush.

TIRE — NEW size 855 x 15, W.W., ask for Pat daytime only. 439-9832. 211129

TWO TIRES, C78-13, used for 3,000 miles, \$12 each. 439-1185.

MISC. — 150 LBS. Butternut squash, 10¢ lb. Hanging fireplace screen. Vanderwood 462-4343.

WANTED TO BUY

ANTIQUES WANTED: furniture, glassware, clocks, dolls, toys, crocks, jugs, coverlets, curved glass china closets. We buy anything very old. Pinkerton Antiques, Ravenna. 756-6538. 411129

WANT TO SELL

OR JUST CURIOUS ABOUT THE CURRENT VALUE OF YOUR HOME,

Whatever your motive, we will provide a **MARKET RESEARCH** of your property at no obligation to you. Call today.



A Gallery of Homes

489-8551

It may not be the fanciest gift you will receive, but it will be the most welcome!

**ELECTRO-HYGIENE • EUREKA • HOOVER
LEXINGTON VACUUM CLEANER
REBUILDERS**

62 LEXINGTON AVE., ALBANY • HO 5-4636



The VW Owner's Security Blanket is...

a New Warranty that covers everything except filters, fluids and lubricants. Yes, everything. Even Brake Pads. Spark Plugs. Windshield wiper blades.



Any questions?

CAPITOL



Authorized Dealer

5 min. from downtown Albany
Rt. 9W, Glenmont • 463-3141

Open Saturday

WANTED TO BUY

Winchester Rifles before 1964
All Makes and Models
439-1388

AUTOMOTIVE

Prevent **RUST** on new cars. **STOP RUST** on old cars. With our system, we **RUST-PROOF** complete under carriage, inside doors, inside rocker panels, inside trunk. **Appointment only.**
JOE KELLER'S MOBIL
463-7712 • Rt. 9W • Glenmont, N.Y.

FOR SALE — 1970 Plymouth Barracuda. White, black vinyl hardtop, mint condition, \$1,350.00 including snow tires. 29,000 miles. 439-6701. 2t1129

66 DODGE PICK-UP, rebuilt motor, good running condition, \$300.00. 767-2760.

PETS

House of Pierre
We are dedicated to making your pet more beautiful.
Professional Grooming



239 DELAWARE AVENUE
439-7907 or 439-1800

HELP WANTED

ON CALLING — buy or sell. Mrs. Calisto. St 5-9857. tf
ART-TIME, full charge bookkeeper for real estate construction company office in Delmar. Approximately 15 hours a week. Call 439-5919 or 439-4300 after 7:00 P.M. tf
ADDRESSER, chair to rent in electrologist shop. Bus line. Delmar. 439-7168. 2t1122
GENERAL HANDYMAN, all types of work; papering, painting, carpentry, cellars sealed, etc. No job too small. 463-4736. 2t1122
BABYSITTING — weekly, Voorheesville area, playroom, fenced yard, playmates. 765-4300. 2t1122

REAL ESTATE FOR RENT

WINTER STORAGE, including winterizing and spring tune-up. Al Hayner. 674-2536. 2t1122

now is coming . . .

Check our **Hard-Man Super Chute** the only snow-blower with a evolving barrel.



We don't only sell, we service!!
JOHN S. ALBANO & SONS
POWER EQUIPMENT
15 Main St., Ravena • 756-2911
bank financing avail.

DELMAR \$240. 6 room heated apartment, first floor, adults preferred, no pets. 439-1763 evenings.
SCHOOLHOUSE ROAD. \$150 monthly, one bedroom, living room, kitchen, bathroom, garage, unfurnished, no pets, reference required, 438-7946 after 6:00 P.M.
3 ROOM APARTMENT, available Dec. 1st. Modern kitchen, large living room, ht. and ht. water, on bus line. \$175. 439-6287.
DUPLEX ON BUS LINE, stove & refrigerator. Jan. 1, 1974. \$175 a month. 439-5634.
FOR RENT: furnished house, living room, dining room, two bedrooms, two baths. Garage. One year 1 ase. Gas heat. \$300.00 monthly plus utilities. 439-6701.
GLENMONT — 3 bedroom modern house, garage. Spacious grounds. Electric heat (built-in range). \$250 per month unheated. 765-2633.
5 ROOM HEATED Apartment. Adults only. No pets. 439-1227 before 10 A.M. or after 7:00 P.M.
DEC. 1st TO May 1st only. Heated 2 bedroom furnished flat in Tri-Village to responsible couple. References. \$175.00 per month. Phone 439-5133 after 7. 2t1122

REAL ESTATE FOR SALE

Colonial Acres

We have three individually designed, award winning Early American 4 bedroom Colonials for you to choose from. Special features include cabot stained exteriors, black laich hardware, cupolas — wood burning fireplaces & tree-lined streets. Community pool & golf privileges. Priced from the \$50's.



cohn
yaguda
cronin
456-5101

SITUATIONS WANTED

WANTED: general housework. Reliable. 768-2050.
BABYSITTING: Slingerlands, Delmar area, days. 439-2147.
PAINTING — fine interior work, available immediately, references; free estimates. 439-6151.
BARTENDING — Holiday work sought by college graduate, experienced in party work. References — 439-6151.
BABYSITTING — weekly, Voorheesville area, playroom, fenced yard, playmates. 765-4300. 2t1129
GUITAR LESSONS, evenings, \$2.50 per half hour. 439-2058.
WINDOWS CLEANED, repairs, odd jobs, carpentry, lawn care. McGraw. 463-8882. 4t1129
HOUSEWORK on Mondays. Call after 7 P.M. 767-2863.
SUBSTITUTE POSTMAN seeks any odd jobs to supplement income. Large jeep wagon available. 434-6729.
ODD JOBS, cellars & attic cleaned, floor washed & waxed, small paint job etc. 767-3491. 2t1122

ROOM WITH BOARD

PARENTS BOARDED; lovely country home. Visit with them anytime. 767-9537. tf

UNWANTED HAIR PROBLEM?



HAD ELECTROLYSIS OR SHORT-WAVE AND THE HAIR GREW BACK? WE'LL DO IT RIGHT OR WE'LL DO IT FREE!

PAMELA STUART SYSTEM

213 Standard Bldg., 112 State St.
Albany, N.Y. • 463-8369
— 10-7 Daily —

Any way you cut it.
INTERNATIONAL HARVESTER
CADETS • SNOWBLOWER (repairs on all makes)
KNICKERBOCKER LAWN & RECREATION EQUIPMENT CO.
1526 N. Scotland Rd., Slingerlands 12159

GIRL'S COATS — size 10 and 14, maxi length, may be unzipped to regular length. Fur trim. \$25.00 each. **Girl's Green Coat** — size 10, \$5.00. **Stretch Ski Pants** — size 10 & 12, \$5.00 each. All like new — 439-5305

P. J. CONTRACTING

Specializing in wallpapering and interior painting
Free estimates — Fully insured
768-2055

Area's Oldest and Largest

SAAB

Dealer . . . with complete parts dept. **AND SERVICE!**

Test drive a Saab at

New Salem Garage 
INC.

New Salem, N.Y.
765-2702

Amazing Organic Biodegradable Products

Basic H

All Purpose **SUPERCLEANER**
1 Quart Makes 64 Gallons

Basic L

Organic Laundry Cleaner
Works on all Fabrics
Any Kind of Water
A Little Goes A Long Way

Basic D

For Dishwashers
COMPLETE LINE OF OTHER PRODUCTS: NATURAL COSMETICS, FOOD SUPPLEMENTS, BABY AND PET CARE, ETC. COMPARE!

THE SHAKLEE FAMILY
Call **MRS. KASPER**
438-4052



HIGHER RESULTS,
LOWER COST...
with WANT ADS!

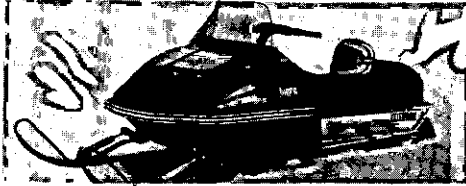
439-4949



HAVE A HAPPY

Thanksgiving on

Dave Flach — a free turkey given away with the purchase of any snowmobile or motorcycle during November.



See our hand-made DOLLS — SNOWMOBILE JEWELRY — JUDI'S GIFT COUNTER

SNOWMOBILES — MOTORCYCLES — ACCESSORIES

DAVE FLACH'S

SALES & SERVICE

Rt. 9W, Ravena

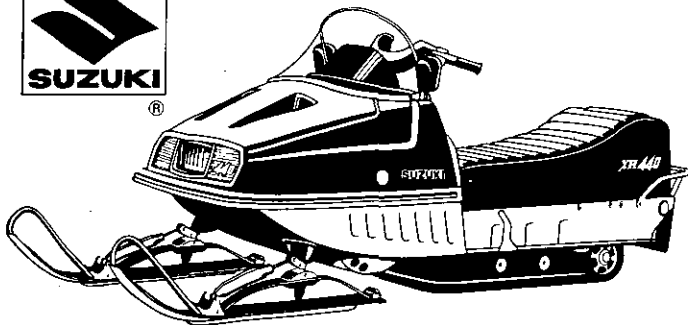
Mon., Wed., Fri. 10-9
Tues. & Thurs. 10-6 • Sat. 9-5

756-2900

ANNOUNCEMENT!

Complete line of

1974 SUZUKI SNOWMOBILES NOW ON DISPLAY



from \$795.00 complete

SEYMOUR'S MOTORIZED SPORTS, Inc.

Rt. 9, Latham, No. of Traffic Circle (opposite Holiday Inn,
785-8856

Snow Fun! *by Jim Jules*

TV Snowmobile Series

A new 13-week, half-hour television series called "SnowSports" is being premiered November 10 and will run in approximately 35 television markets this winter. The series will show the fun, excitement and interesting aspects of the fast growing sport of snowmobiling.

The show is scheduled at this time to be carried in Washington, Idaho, Nevada, North and South Dakota, Montana, Minnesota, Iowa, Wisconsin, Michigan, New York, Vermont, and Massachusetts. These areas represent the majority of all snowmobiles in the U.S. Other markets will be added.

"SnowSports" is produced by SnowSports Publication Inc., a Minneapolis (Minnesota) based company.

The program format is designed to commence with a special premiere show which will include phases from nearly all segments of the sport and industry. Other programs include features on subjects such as trail riding, pioneers of the sport, racing, explorers and adventurers of snowmobiles, and some of the best places to go snowmobiling in North America. Information on ecology and environmental impact, plus interviews with leading racers and other personalities, are



Pictured here: 1974 snowmobile-wear by Ski-Doo. 1) Scrambler Sportswear; 2) Sports; 3) Family suits

cheduled for the first six
hows.
National sponsors of the

show are Champion Spark
Plugs and Ski-Doo snow-
mobiles.




times to fun

oyers
Cross Country Skis
58 New Scotland Rd.
439-5966



DAN & BETTY DRYDEN'S
SKI SCHOOL
For boys & girls ages 7-15
Saturdays — January thru
March. All day instruction,
practice, fun.
Transportation from Al-
bany and Delmar
to ski areas provided.
For information, rates
phone **462-5200**



LEON HATKOFF

DUANE'S GIGANTIC

Toyland!

STOP 3 ALBANY SCENECTADY ROAD


WORLD'S GREATEST TOY STORE

OPEN DAILY

393-7330, 372-1615

WE'RE READY IF YOU ARE! Signed your favorite Toy Store





Applebee
Funeral Home
Inc.

403 Kenwood Avenue
Delmar, New York

Jacoba P. Applebee, Lic. Dir.

**TO THE VOTERS OF THE
35th LEGISLATIVE DISTRICT**



*Thank
You! ...*

BERNIE KAPLOWITZ

ATTENTION: ROCK HOUNDS, OUR NEW STORE IS OPEN!

**FIELD STONE SPECIALTIES.,
INCORPORATED**

Route 9W (across from Heath's Dairy) Glenmont

434-8963

Tumbling Stone, Grits & Acc. Slabs for Cabbings
Geodes Cut & Polished Jewelry — Sea Shells — Driftwood
Custom Sawing & Polishing

•

Wall Stone — Veneer Stone — Flagging — Vermont Slate
Treads — Rock Garden Stone

LeVere L. Fuller

Wandering & Wondering . . .

“ELIZABETH R” REIGNS SUPREME

Academy award-winning British actress Glenda Jackson stars as England's Queen Elizabeth I in the highly acclaimed series, "Elizabeth R." The Virgin Queen's brilliant reign begins Tuesday, November 20th, at 9:30 p.m. on WTEN, Channel 10. The five remaining episodes will air on Tuesday, November 27th; Tuesday, December 4th; Tuesday, December 11th; Tuesday, December 18th; and Sunday, December 30th; all at 9:30 — 11:00 p.m. This grand pageant of history will be sponsored by the Atlantic Cement Company.

The mystery and power of Elizabeth is explored in six 90-minute dramas written by different authors. Together the plays present a chronological picture of one of the most exciting and colorful periods in English history.

The series follows Elizabeth — Henry VIII's daughter by Anne Boleyn — through a gradual transition from a young pretty princess to a wrinkled, ugly, thumb-sucking woman.

The sponsorship by the Atlantic Cement Company will pioneer a new concept of public service broadcasting.

Atlantic has produced six, seven-minute documentaries. One will be shown during each episode of "Elizabeth R." to pioneer a new concept of public service broadcasting.


Atlantic has produced six, seven-minute documentaries. One will be shown during each episode of "Elizabeth R." They will be the only breaks during the series.

The mini-documentaries focus on six different groups of citizens who are improving the life of our communities.

. . . the natural technique

TRANSCENDENTAL MEDITATION

as taught by
MAHARISHI MAHESH YOGI



- EASILY GAIN DEEP REST AND RELAXATION
- DEVELOP FULL CREATIVE POTENTIAL

Scientific research on TM discussed in
Scientific American, Psychology Today, Today's Health

Free Public Lectures:
Tues., Nov. 27 Delmar Public Library
7:30 P.M. — 451 Delaware Avenue
Wed., Nov. 28 The Bank — Delmar Branch
7:30 P.M. — 343 Delaware Avenue

For further information: 439-9198
INTERNATIONAL MEDITATION SOCIETY

through their involvement, concern and action.

Each group of citizens have seen a problem and determined to solve it or recognize a need and determined to provide it.

They are little known groups and each illustrates the effectiveness of a few dedicated people who are concerned enough to seek changes or improvements in our area.

One documentary focuses on Dr. Samuel Powers of the Albany Medical Center and his pioneering work in trauma. He has combined the science of medicine with the technology of computers. His "trauma room" is one of just even in the nation. Trauma is the greatest cause of death for persons 35-55. Dr. Powers' efforts in this little known field of medicine is leading to a victory over this obscure killer.

Two of the short documentaries focus on the rehabilitation of city housing and the need to bring families back to our cities by creating neighborhood environments.

The Center Square Association in Albany has successfully recreated a family neighborhood on the fringe of the South Mall. Cold water flats have been returned to magnificent, one family homes. Similar neighborhoods, following the Center Square example, are rebuilding their streets.

In Schenectady, the historical restoration of the Stockade area into a livable community is another example of attracting families back into our cities. Here, historical accuracy in rebuilding the homes is a self-imposed rule for the residents. Out of a deteriorated, slum area has grown a charming restoration of Colonial America.

Parents of brain damaged children who founded the Wildwood School in Albany are the subjects of a fourth mini-documentary. These youngsters — autistic, retarded, developmentally impaired, etc. — have for years been ignored or committed. Yet, they can be educated and many can be brought up to their grade level and entered a normal school environment. This school has become a national model for the education of these children.

The traditional Boy Scout program and its modern application in our inner cities is explained in a fifth seven-minute documentary. Boys camp in vacant lots, hike in city parks, learn first aid for rat bites and lead poisoning. As a neighborhood troop, the Scouts replace neighborhood gangs.

Establishment of a permanent professional Opera Company for the Capital District and the novel educational approach that this group uses in school recitals is the sixth documentary produced by Atlantic Cement. Dedicated, professional singers, operating on limited funds and time, have given this area an opera company of recognized stature.

Each documentary emphasizes the involvement of people and the changes that involvement creates in our community.

SPRING AND WONDERING will return next week.

Spotlight

community corner

A THRILLING WINTER SPORT

What: Bethlehem Youth Hockey Program.

Where: At Elm Avenue Park on a special rink.

Boys and girls through the age of 12 may register for this outstanding winter program any day, Monday through Friday, between the hours of 9 A.M. and 4 P.M. at the Bethlehem Parks and Recreation Department office, 114 Adams Street, Delmar. Hockey is one of America's fastest-growing sports in both the actual playing and spectator participation. This year, Bethlehem youngsters can participate in this Youth Hockey Program with expert guidance and instruction. Watch out, Bobby Orr!



BOY SCOUT FUND RAISER

What: Fund raising drive sponsored by Troop 72, Boy Scouts of America, Slingerlands.

Where: The scouts will visit Tri-Village homes.

When: Now through Saturday, Nov. 24.

This novel fund raising drive will feature Value Sales Kits which the Scouts will be selling. Each kit contains a variety of items including a flashlight, tools, Christmas gifts and household helpers. You can do Christmas shopping right at home and help Troop 72 at the same time. Profits made from the sales will be used for troop training and camping activities. If you'd like to help, or if your house is skipped, call Charles Haslam, 439-9702.

Community Corner, a public service column of important community events, is sponsored by the people of the

PLASTICS DEPARTMENT

GENERAL  ELECTRIC

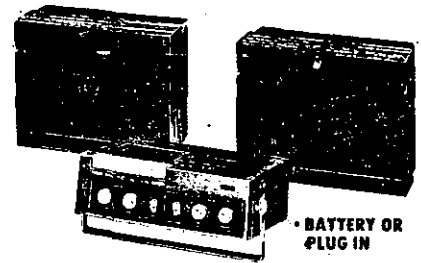
SELKIRK, NEW YORK 12158

RCA Special

THRU NOVEMBER

YOUR CHOICE **\$99** each

CONVENIENT TERMS These items were originally \$129.95 to \$199.95 by RCA



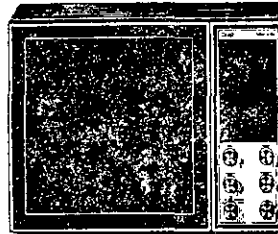
RCA Stereo Cassette Recorder

- BATTERY OR PLUG IN
- COMPLETE W/2 MIKES & MIKE STANDS



RCA
Generous 15" diagonal screen.
Portable

(Open Mon. thru Sat. to 5:30 P.M. & Thurs. Eves.)



RCA FM-AM-FM STEREO • 80 watt output 4 speakers
• automatic changer • bll ckout dial



SWIRE *Appliance*

14 SO. PEARL ST.
2 DOORS FROM STATE ST.

465-3132

2 blocks off I-787 riverfront arteria



CHRISTMAS CARDS BY AMERICAN INDIAN ARTISTS

Silver and Turquoise jewelry
beadwork jewelry, pottery, rugs, books,
baskets, paintings, carvings, dolls.

American Indian Treasures

AUTHENTIC ARTS AND CRAFTS

HOURS:
Mon. thru Sat. 10 to 5
2558 Western Ave., Rts. 20 & 146
Guilderland, N.Y. 12084
Mon. & Thurs. 'til 9
• Master Charge • BankAmericard

Grand Opening

Lanese & Acker Company

(FORMERLY QUIK-STRIP)

**50% OFF ALL STRIPPING
SATURDAY, NOVEMBER 24 ONLY**

556 YATES STREET, ALBANY (above Partridge)



The **MOON RESTAURANT**

268 Delaware Avenue, Albany
IS FULLY RE-OPENED FOR LUNCHES,
DINNER, PARTIES 463-3343

BETHLEHEM PUBLIC LIBRARY
451 DELAWARE AVENUE
DELMAR, NEW YORK 12054