

Graphic newsweekly serving the towns of Bethlehem, New Scotland and nearby communities

Controlling Bethlehem growth: ... half-acre zoning next?

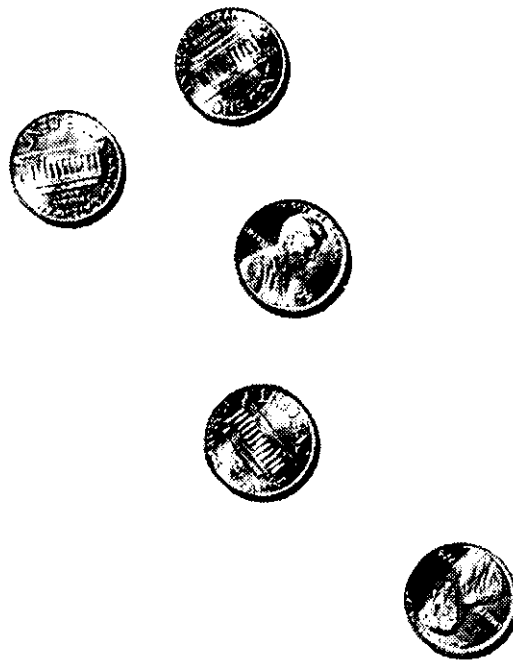
Page 7



History on stage ... with music

Page 12

*St. Thomas first graders
Paul Gratzel and Suzanne Dandeneau*



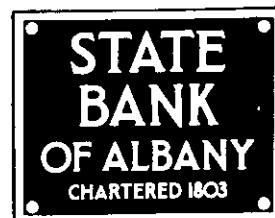
Really...how high is “higher” interest? Let's talk.

A nickel a week. Twenty one cents a month. That's how much more interest you'd earn on \$1000 deposited in a regular passbook account at a savings institution rather than at State Bank of Albany.* A nickel a week. It's not that we're stingy about paying interest — maximum rates at all banks are set by law.

But when your savings are on deposit with us, our entire list of bank services is more readily available to you. Mastercharge, PocketBank Checking — the checking account that becomes an automatic loan if you overdraw your account, personal loans, and financial planning. The difference in interest rates is so little that it isn't even worth your time to have to go to two banks to do all your banking. And when you save with us, you become a full service customer — using all our services to your best advantage. You're one of the family. We know you better. You know us better. And we can help each other.

Isn't that worth a nickel a week. Come on in . . . and Let's Talk!

*On regular savings deposits we pay interest at the rate of five (5) percent per annum, whereas the savings bank rate is five and one-quarter (5¼) percent per annum.



Member FDIC

Spotlight

is published every Thursday by Newsgraphics, Inc., 154 Delaware Ave., Delmar, N.Y. 12054. N.A. Boynton, editor-publisher. Controlled circulation, postage paid at Delmar, N.Y. News and ad copy deadline 4 p.m. Friday for following week's issue.

Spotlight CALENDAR

Boy Scout Troop 159 for the handicapped meets Thursday 7 p.m., Delmar Reformed Church.

Kiwanis Club of Delmar meets every Monday night at 6:15 at The Center Inn, Route 9W, Glenmont.

Glenmont Lions Club meets 2nd and 4th Tuesdays at Lacasa Restaurant, Selkirk, 6:30 p.m. Visitors welcome. Info: Frank Muria, 767-2408.

Bethlehem Lions Club meets first and third Wednesdays at LaCasa, Selkirk, 6:30 p.m.

AARP meets 12:30 p.m., third Tuesday of month, Delmar First United Methodist Church, Kenwood Avenue, Delmar.

Elsmere Fire Co., last Thursday of each month, 8 p.m.

Bethlehem Lodge meets on first and third Wednesday of every month, Ladies Auxiliary meets on second Wednesday of every month.

Citizen Band Radio Club first Thursday, Third Tuesday at the Center Inn, 8:00 p.m. Mrs. John Silvia, 463-7675.

Great Dane Club of Greater Albany meets second Friday of the month, 8:00 p.m., Center Inn, Glenmont. Guests are welcome. Info: call 785-7253.

Nathaniel Adams Blanchard Post #1040, American Legion, meets first and third Monday of month (when holiday occurs, move to Tuesday) except July and August, 8:30 p.m.

Bethlehem Jaycees meet 4th Monday of each month, 7:30 p.m., Center inn. Contact Denise Linstruth 439-5312 or Nevanne Merrill at 439-6138.

Tri-Village FISH — Call 439-3578 for voluntary service — 24 hours a day the year 'round — offered by residents of Delmar, Elsmere and Slingerlands to their neighbors in need of help in any emergency.

Bethlehem Jaycees meet first and third Wednesdays of the month, 8 P.m., Center Inn, 9W, Glenmont.

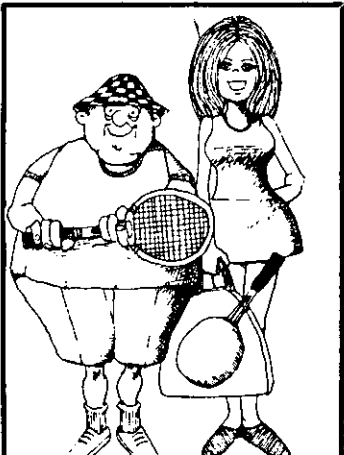
Welcome Wagon — Newcomers and mothers of new babies call 785-9640, Mon. thru Sat., 8:30 A.M., 6:00 p.m. so you may have a Welcome Wagon call.

Bethlehem Memorial Auxiliary to Post #3185, Veterans of Foreign Wars, meets the third Monday of every month, at the Post Rooms, 404 Delaware Ave., Delmar.

The Albany County Pistol Club, Winnie Place and Maewin Drive, Delmar, welcomes guests at its indoor pistol range every Tuesday at 8 p.m. Information: Dave Herbach, 439-4372 or Tom Corrigan, 439-3301.

Monarch Club of Albany meets every Tuesday night at the Center Inn, Glenmont, 6:00 P.M.

Give and Take Shop, staffed and stocked by residents of Delmar, clothing for all occasions, all ages, all sizes, available to everyone. Basement St. Thomas Apostle Church & Rectory, Mon. 9:30 - 11:30 a.m., Tues. 1-3 p.m., Sat. 10 a.m. - 12 noon.



Tennis Lessons
Pro Shop
Racquet Stringing
**Tri-City
Racquet Club**
785-4311
Rt. 9 Latham

**MID-WINTER STOREWIDE
SALE**
SAVE 10% TO 50%
On a Wide Selection of Fine Equipment and Apparel

The Paddock Tack Shop
*Northern New York's Largest
All English Specialty Shop for Horsemen*
ON RTE. 7, One Mile West of Northway Exit 6 (Latham)
Daily 10-5, Thurs. Nite Till 9 Closed Sunday
785-1999

REGENCY PARK
2120 WESTERN AVENUE
GUILDERLAND, NEW YORK 12084

One & Two Bedroom Garden Apts.
Walking distance to "20" Mall.
Total Electric — All utilities included.
Superior Maintenance Service
Top \$ Value
All Leisure Facilities
Office Open Daily 10 to 5
456-6330

Here it is!

WINTER PROMS

ALL Remaining Winter Sale Apparel
Dresses - Coats - Sportswear - Suits - Accessories

TOWN AND TWEED
DELAWARE PLAZA • DELMAR

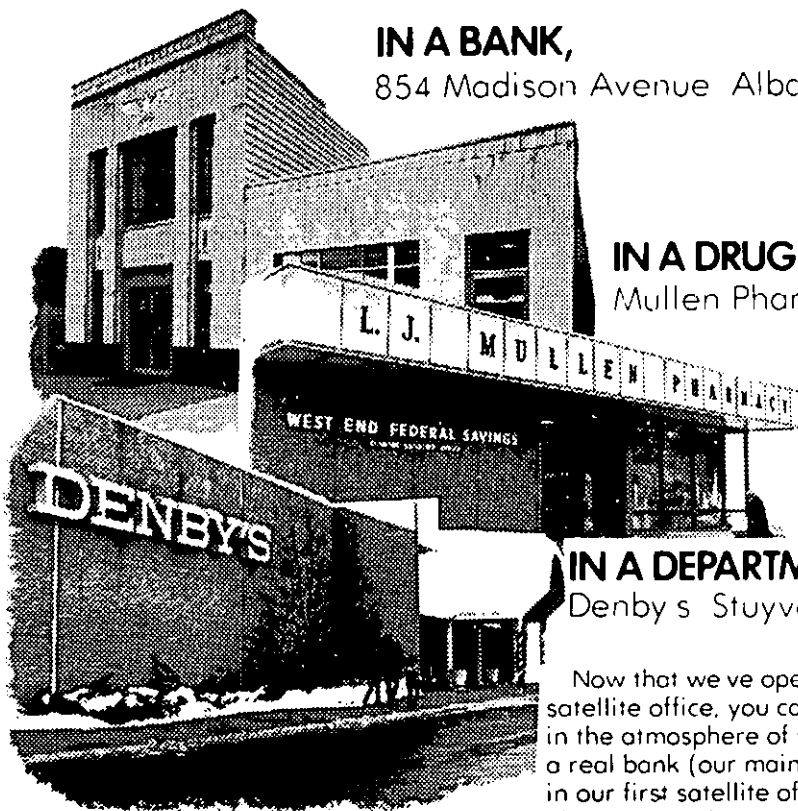
OPEN DAILY 10A.M. to 9P.M.
SAT. 10 to 5:30

NOW YOU CAN DO YOUR BANKING

IN A BANK,
854 Madison Avenue Albany

IN A DRUG STORE,
Mullen Pharmacy, Delmar

IN A DEPARTMENT STORE.
Denby's Stuyvesant Plaza



Now that we've opened our second satellite office, you can do your banking in the atmosphere of your choice — in a real bank (our main headquarters) . . . in our first satellite office in the Mullen Pharmacy, Delmar . . . or in our newest satellite office in Denby's at Stuyvesant Plaza.

We're delighted to be in Stuyvesant Plaza to be of service to the thousands upon thousands of residents in that fast-moving, fast-growing area. We'll do all we can to merit your trust and your business.

Have some banking to do now? What's your pleasure — a real bank-type bank? A friendly, neighborly drug store bank? A bustling, fashionable department store bank?

Please come see us.
We've got one of each.

WEST END FEDERAL

SAVINGS & LOAN ASSOCIATION

Onesquethaw O.E.S. meets on the first and third Wednesday of every month at the Masonic Temple in Delmar.

Glenmont Homemakers meet third Wednesday of month; Glenmont Comm. Church, 8 p.m.

Sports Car Club of America, first Wed. of each month 8:00 p.m. at the Center Inn, Glenmont, Marie Corrin, 869-6948.

Bethlehem Junior Woman's Club meets 2nd Wednesday of each month, 8 p.m., Bethlehem Public Library.

Rosary — St. Thomas Church, Adams Place, Delmar, every Thursday at 11:45 a.m.

Bethlehem Recycling Program (paper, cans, glass), Town Garage, 114 Adams St., Delmar. Mon. thru Fri., 8 a.m. - 4 p.m. Papers should be tied, cans flattened, bottles clean w/metal removed.

Empire Motor Sports Club, every Thursday at 8 at the Center Inn, Rt. 9W, Glenmont. Lee Beauregard — 456-0019.

Citizen Band Radio Club, first Thursday at 8 p.m. at the Center Inn, Rt. 9W, Glenmont. Danny Oat-hout, 463-0804.

Albany Ski Club, first & third Thursdays at 8 p.m. at the Center Inn, Rt. 9W, Glenmont, Joe Quillian, 274-1873.

Bethlehem B.P.O.E. 2233, first and third Wednesdays, 8 p.m. at the Lodge in Cedar Hill, Rt. 144. Ladies' Auxiliary second Wednesday.

Career Education Resource Center, Bethlehem Senior High School, every Wednesday, 7 to 9 p.m.

League of Women Voters, Thursdays, 9:30 a.m., once or twice a month, at Bethlehem Public Library. Information, 767-2094.

Rotary Club of Delmar meets every Tuesday night 6:15 at Schrafft's Motel.

The Delmar Community Orchestra rehearses every Monday evening from 7:30-9:30 at the First United Methodist Church of Delmar.

Gam-Anon, for wives of compulsive gamblers, meets Wednesdays 8:15 p.m., St. Pius Church, Loudonville, 462-6916 or P.O. Box 23, Albany.

Historical films, Community Room, Bethlehem Library, 12 noon, bring lunch, free coffee.

Paper Drive by Youth Groups of Methodist and Reformed Churches, second Saturday of each month. Bring papers to Town Parking Lot next to Applebee Funeral Home, 10 a.m. to 2 p.m. Papers will be picked up from the elderly or infirm if you call either church office.

Bethlehem Youth Employment Service, 114 Adams St., Delmar. School year schedule, Monday-Friday, 1:00 -4:30 p.m. Telephone 439-2238.

THURSDAY, FEBRUARY 5

United Methodist Church Women, slide show, dessert and coffee, First United Methodist Church, Delmar, 12:30 p.m.

Macbeth, Slingerlands Players, Unionville Playhouse, 8:30 p.m.

FRIDAY, FEBRUARY 6

Young Adult film series, "The Hustler," Paul Newman, Jackie Gleason, Bethlehem Library, 3:30 p.m. for public, 7:30 p.m. for high school students only.

Coffee for Birch Bayh, home of Ann Brandon, 84 Parkwyn Dr., Delmar, 10 a.m.

Macbeth, Slingerlands Players, Unionville Playhouse, 8:30 p.m.

SATURDAY, FEBRUARY 7

Winter Carnival, Elm Ave. Park, Delmar, 12:30 p.m.

Paper drive, Boy Scout Troop 71. Bring newspapers, magazines to St. Thomas Church parking lot, 9 a.m. to 1 p.m.

BCHS Wind Ensemble, Cubic Kum Quat Night Club, high school cafeteria, 8 p.m.

Bethlehem Tomboys softball, registration, girls 9-18, Bethlehem Library, 9 a.m.-12 noon. Bring birth certificate.

Macbeth, Slingerlands Players, Unionville Playhouse, 8:30 p.m.

SUNDAY, FEBRUARY 8

Three films at Bethlehem Library, 2 p.m.

Winter walk, ski or snowshoe sponsored by Nature Conservancy, meet entrance of Whitbeck Grove, Rt. 85, New Scotland, 11 a.m.

MONDAY, FEBRUARY 9

World War 2 Veterans luncheon, Schrafft's Motor Inn, 1 p.m.

WEDNESDAY, FEBRUARY 11

Progress Club, creative arts class, Bethlehem Library, 10 a.m.

Poetry reading by Lyn Lifshin, Bethlehem Library, 7:30 p.m.

THURSDAY, FEBRUARY 12

"America, a Tribute," pageant, St. Thomas School, 7:30 p.m.

Elsmere Fire Co. Auxiliary, fire hall, 8 p.m.

Spotlight Classifieds bring quick results

WINTER CLEARANCE 20% TO 50% OFF

MEN'S ORLON SOCKS 2 for \$1.50
Reg. \$1.50 pair

FLANNEL SHIRTS \$4.00
Reg. to \$7.98

SPECIAL GROUP ROB ROY SPORT SHIRTS \$2.00

FAMOUS BRAND CREW SOCKS 2 for \$1.50
Reg. \$1.15 pair

"Mr. Thomas" SETS 50% off
INFANT & TODDLER

Girls 7-14 SLACKS \$2.50
Reg. to \$6.98

GROUP OF "LOVE" GIRLS' DRESSES 50% OFF

Ladies' ROBES & GOWNS 20% OFF
BRUSHED or FLANNEL

MANY UNADVERTISED SPECIALS COME SEE WHAT YOU CAN SAVE

DELMAR DEPT. STORE at the FOUR CORNERS

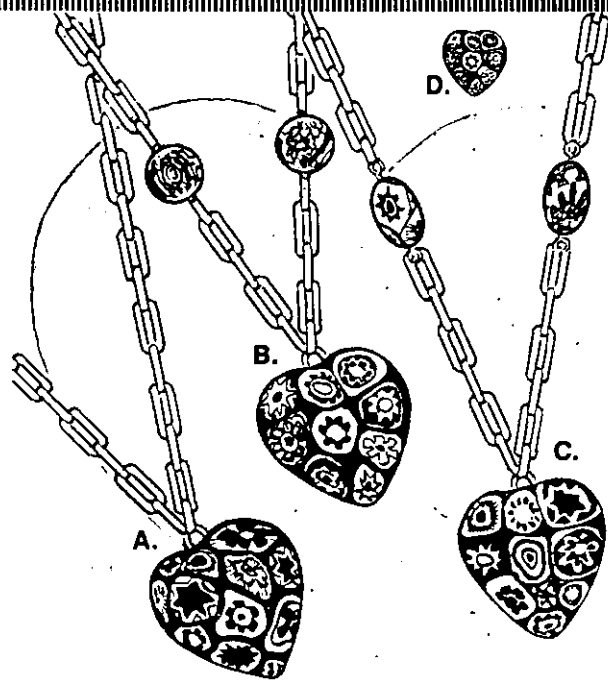


Enroll Now For Mid-Winter Dance Classes Eleanor's School of the Dance

Tap - Ballet - Modern Jazz - Baton - Gymnastics In DELMAR at Knights of Columbus Hall Hudson Ave.

Other Locations in Albany & Colonie

For Information Call: 456-3222 or 489-0028



Love, Italian Style!

What better way to say "Amore" than an enchanting hand-made mosaic heart pendant, created for us, by Oxford. From Venice, with love! Brilliantly multi-colored. A gem of a gift. Because you'd like to give her the world!

\$17.75



67 STATE ST., ALBANY

FORD WHEELS— ORANGE DEALS

LEASE A
1976 PINTO MPG

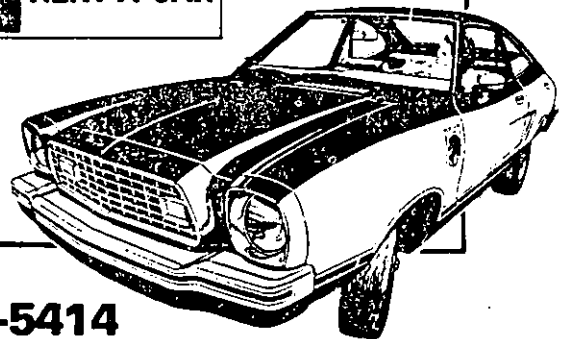
\$99.00
PER MONTH*

- Automatic Transmission
- AM Radio
- White Wall Tires
- Rear Window Defroster
- Front Disc Brakes

*BASED ON TWO YEAR LEASE, 15,000 MILES PER YEAR
Excludes Insurance, Maintenance and Registration

Prices effective through March 31, 1976 only

RENT A PINTO FOR
\$6 a day, 6¢ a mile
Long and short term
leasing available at
low, low rates.



Our 60th Year 489-5414

What Color Orange Ford Do You Want?

ORANGEMOTORS
799 Central Avenue, Albany

The Spotlight

Controlled Circulation Publication

February 5, 1976
Vol. XXII, No. 6

Graphic newsweekly serving the towns of Bethlehem, New Scotland and nearby communities

TOWN PLANNING

Residential density solution: half-acre zoning

One of the prime reasons Bethlehem's planning board plays to a full audience at public sessions is citizen concern over residential density in new housing. If the town were to increase the minimum requirements on lot sizes in specified areas, chances are the board's hearings wouldn't be so popular.

When the town board meets next Tuesday, it is expected to approve a planning board recommendation to amend the zoning ordinance to include a new classification — Residen-

tial AAA with a minimum lot size of 20,000 square feet and minimum frontage of 125 feet. Presently the town's highest residential zone classification is Double-A with the minimum lot size 10,400 square feet.

Matter of density

Triple-A zoning has been recommended by the planning board, which has been under steady pressure by neighborhood groups aroused by what they consider a serious threat to the quality of life in their

areas posed by developers planning major subdivisions. Among them: Lyndhurst, 150 houses, some of them two-family, on 62 acres in Slingerlands, and Brookfield, 131 houses on 52 acres west of Brockley Dr. in Delmar. The basic theme of property owners opposing these and other nearby subdivisions: builders try to crowd as many homesites as possible into a tract without overstepping the lot-size minimum, which, the residents complain, tends to lower the value of their existing proper-

ties which are generally larger. The key word is density.

Pinch in the market

Developers, feeling relatively safe from municipal interference by observing all legal requirements, counter by pointing out that the national trend is toward no-frill housing, smaller dwellings on smaller lots to keep costs down.

For its part the planning board has moved carefully and thoughtfully in recommending Triple-A zoning. "There are a lot of factors to consider," says Chairman William R. Weber.

"If there are some Triple-A zones we must make sure there is adequate Double-A zoning to accommodate home-builders of modest incomes. The effect of sewer taxes, which are based in part on frontage, also must be evaluated."

Town Counsel Harry Rezzemini and Supervisor Harry Sheaffer were scheduled to meet early this week to study the planning board suggestion and to prepare a formal definition of Triple-A for presentation to the town board at its regular meeting Feb. 11. If approved by the town board, there will be a public hearing, a necessary step in amending the zoning ordinance.

Brookfield foes are pessimistic

A professional approach by the developers of a proposed 131-lot single-family subdivision west of Brockley Dr. is heading for almost certain approval by the Bethlehem planning board despite strongly

SPOTLIGHT PROFILE

Santola: accomplished spokesman

When the leadoff speaker for the Brockley Area Homeowners Assn. rose to take the "hand mike" at the planning board hearing on Brookfield, neighbors who didn't know him were struck by his youthful appearance. When he be-

gan speaking, they were struck by his articulateness.

At 26, Daniel R. Santola has already earned a few niches of achievement and is certain to add more, even if the cause of the neighborhood alliance he leads is a futile one. He is an attorney in general practice in downtown Albany, he is an assistant professor at RPI, is director of an accelerated management-law program at RPI, and is the president and spokesman of the Brockley Dr. group. He comes from Syracuse, took his BA at the University of Buffalo and earned his law degree at Albany Law School.

He is too young and too new in the community — he came to 42 Brockley Dr. with his wife Kathleen a year and a half ago — to be scarred by previous citizen skirmishes with municipal authority, but he has built-in perspective. At the public hearing last Tuesday he delivered the keynote questions

to the board, set the tone for subsequent citizen speakers and held his peace until a late-inning rebuttal was in order.

Privately he knows what so many of his neighbors know: the seeming futility of trying to block a massive housing subdivision in the green field beyond Brockley's kitchen windows when the developers have complied with all legal requirements. But there have been gains for the beleaguered citizenry.

"It seems to me," he observed the other day, "that the board (Bethlehem's seven-member planning board) is more responsive than it was. I understand they are now opening all their meetings to the public instead of alternate ones. I hope they get to the point where they can tighten their regulations and give more consideration to such points as making the ravine area of Brookfield into a park."



Wm. Longabaugh

Daniel R. Santola



for
quality
and
fashion in
men's wear

8 JAMES STREET, off State St.
ALBANY, NEW YORK

436-1142

BankAmericard Master Charge

Someone hospitalized? Bring them home — to us.

Recuperation at home is often faster and smoother — and less costly. We can help the in-home patient with a highly qualified RN, LPN, Aide or Attendant. Quality care is easily arranged.

463-2171

**MEDICAL PERSONNEL
POOL**
90 State St.,
Albany



DiNAPOLI & DiNAPOLI

New York State



Guild Opticians



Delmar Hours: Tues., Wed., Thurs., Fri. 1:30-5:30
Wed. Eve. 7-9; Sat. 9-2; Closed Mon.

282 Delaware Ave.
Delmar 439-6309

457 Madison Ave.
Albany 449-3200

voiced and near-unanimous opposition by residents of the immediate vicinity. The board was scheduled to review the Brookfield and Bicentennial Woods projects at its Tuesday meeting this week.

More than 50 residents filled the second-floor hearing chamber in town hall to overflowing at the public hearing on Brookfield last week, but the mood was subdued in the face of the builders' methodical adherence to required steps in the approval procedure. The strongest criticism came from Daniel R. Santola, president of the Brockley Area Homeowners Assn., and from Charles Donnelly, a neighbor, during an exchange with Lindsay Boutelle, local land surveyor representing the developer.

Cost of developing

Santola charged that the board is "lax" when, he said, "a developer comes in, makes a profit and then leaves the area, burdening the residents of Brockley Dr."

Boutelle's reply gave the audience its only chuckle of the 80-minute hearing. "It is unfair for Mr. Santola to suggest there is a profit or margin," he said. "Our average cost of developing a lot is \$5,000 to \$6,000. Then you have to add the cost of purchasing the land." The statement brought the amused retort from the crowd: "then why develop?"

Donnelly added: "A planning board should plan. To insure profit for a land developer is not part of the planning board function. The utilization of the acreage is too dense."

Other objections centered on traffic and safety factors, the three proposed access roads to Brockley Dr. and Delaware Ave., pressure on the school population, impact of heavy trucks and equipment during the construction period, and utilization of a ravine area including a stream that has been suggested as a town park if the developer will cede it to the town.

Virtually unchanged

Only one minor change was included in the preliminary

plans submitted by the developer, Biatess Corp., for final approval — a reduction in the number of building sites from 133 to 131 on approximately 52 of the 77 acres in the tract. The remainder is the so-called "green belt" embracing the ravine on the western segment of the property. Boutelle said the plans call for 2.5 dwellings per acre, an average of 14,000-plus square feet per lot and an average of 92 feet frontage. The zone is Residential Double A, which requires a minimum lot size of 10,400 square feet.

Joseph Tessitore is president and Leo Biagiotti vice president of Biatess. The board has 45 days to act on the proposal, during which, according to Chairman William R. Weber, it will "review all comments."

A tutorial time for planning board

Bethlehem's seven-member planning board is going back to college, and the public can sit in on the classroom sessions.

The board has opted to take a five-session course on local planning put out by the local government program of the New York State School of Industrial and Labor Relations at Cornell University.

First of the five sessions, dealing with the nature of planning and planning boards, will be held at 7:30 p.m., Tuesday, Feb. 17, at the Bethlehem town hall, Delmar. Schedules for the remaining sessions will be announced. Each session will be open to the public and will take the place of regularly scheduled open board meetings.

Discussion leader for the course will be George K. Hecht, community resources development agent for the Albany County Cooperative Extension. Also assisting will be representatives from the Albany County planning board.

The course has several objectives: to define powers and duties of those responsible for local planning to define zoning



Ann Patton, left, and Mary Anne Stringham, members of the Bethlehem board of education, chat with Assemblyman C. D. "Larry" Lane at Lane's "Listen-in" public issues forum in Delmar last week. More than 30 persons braved sub-zero weather to attend the informal discussion. Photo by J. W. Campbell

and zoning ordinances and to clarify subdivision ordinances.

According to Board Chairman William R. Weber, the course will help members of the board and the public "to step back and look at the planning board's overall responsibilities objectively."

Delmar school future clouded

Resolution of the long-bubbling Delmar Elementary School issue by the Bethlehem board of education this week could represent only Phase One for the half-century-old structure at Delaware and Borthwick Aves. The board's action, scheduled to be taken at an unusual public session in Wednesday's regular board meet-

ing, can only be for the intermediate term, not long range.

Chairman Bernard Harvith opened the discussion and voting on the resolution to the public, a move unprecedented in local annals inasmuch as members insisted there had been no public indications as to how the individual members felt on the issue. In December the Spotlight reported the board was split on the closure issue, and subsequent indications support the fact that at least two members of the board have changed their respective stands. (The Spotlight went to press before Wednesday's session.)

Problems linger

Since the series of public hearings, Gov. Hugh L. Carey has disclosed a recommended

state budget calling for reduced state aid to localities, including aid to local school districts. Members of the Delmar school's PTA have kept the issue alive with letters to the Spotlight and with press statements cautioning the board against "overcrowding" four elementary schools while one (Clarksville) is currently at 53 percent of capacity. Earlier the Delmar PTA asked the board to close the Clarksville school instead, contending this would cause less disruption in pupil transportation and be less costly overall.

Regardless of the outcome of this week's board action, the eventual utilization of the Delmar building remains uncertain. Projections of school enrollments show a decline for some years to come, and the problem of rising costs and reduced state aid will continue to plague school officials and district taxpayers for the foreseeable future.

C.B. CLARKE, INC. FOR INSURANCE CALL



Burt Anthony

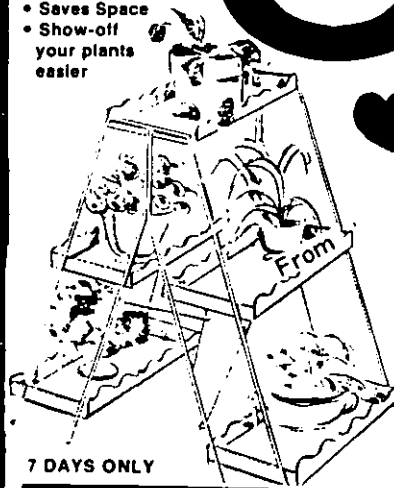
Want to increase your coverage on your homeowner policy for **no** additional premium! Try \$100 deductible.

Call 439-9958



339 Delaware Ave.
Delmar

- Saves Space
- Show-off your plants easier



Valentine Gift Idea!

PLANT STAND SALE

Wood • Metal • Wicker
More than 40 Styles

10-30% SAVINGS

7 DAYS ONLY

NEW SHIPMENT

African Violets ^{full bloom} 93¢ ea., 6/\$5.00

OPEN SUNDAY

3699 Albany-Carman Rd., Guilderland 356-0442
Feura Bush Rd. Glenmont 439-1835

the Garden Shoppe

OPEN DAILY 9-5; SUNDAY 10-4
CLOSED MONDAY

- OUR OWN BAKING
- PARTY FACILITIES

- COCKTAILS
- 250 SEATS

Gateway
DINER • RESTAURANT
899 Central Ave.
Albany

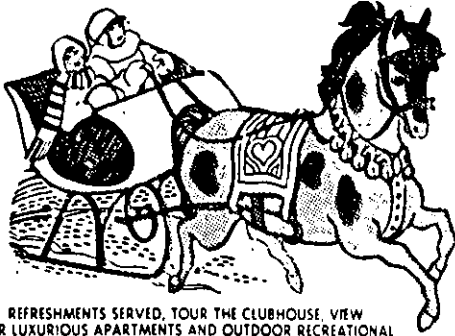
OPEN
24
HRS.

CHARLES T. BOULOUKOS
Proprietor

NEXT TO WESTGATE
(518) 482-7557

You're Invited

to our
WINTER OPEN HOUSES
FEBRUARY 8
11 A.M.-6 P.M., SUNDAY



REFRESHMENTS SERVED. TOUR THE CLUBHOUSE. VIEW OUR LUXURIOUS APARTMENTS AND OUTDOOR RECREATIONAL FACILITIES!

Bethlehem Terrace

BLESSING ROAD
(Off Slingerlands Bypass)
Rte. 88, Slingerlands, N.Y.
438-6883

MON.-FRI. 9-6 and by APPOINTMENT
SAT. & SUN. 11 A.M. to 6 P.M.

Winter carnival snow or shine

Bethlehem's 1976 Bicentennial Winter Carnival, postponed last week by a snow-killing rainstorm, is on this Saturday regardless of weather, says Lloyd R. "Bud" Wilson Jr., acting administrator of parks and recreation.

The events will run from 12:30 to 4 p.m. at Elm Ave. Park. Sponsors are the Blanchard Post, American Legion, Bethlehem Bicentennial Commission and the town's Parks and Recreation Dept. James Beck is carnival chairman.

Ice skating contests, under the direction of Warren Moessner and Sid Kaplan, will be run in six divisions with prizes awarded to 4-5 year olds, 6-8 year olds, 9-11 year olds, 12-13 year olds, 14 and over. An old fashioned skate race is open to all ages using any skates *except modern shoe skates*. Participants for the skating events should sign up at 12:30. Races begin at 1 p.m.

A snow sculpture contest will award three prizes, open to individuals, family groups and organizations. The snow sculpture contest will start at 9 a.m. with judging at 3 p.m. Check with the sculpture chairman, Henry Eckhardt, for site assignments at the park when you arrive.

Hot chocolate and dogs

Hot chocolate and hot dogs will be given free to all participants and available at moderate cost to spectators, according to the refreshment committee headed by Harvey Hasen, Joe Mantaro and Ollie Palmer.

Wedding Photographs . . .

by Campbell

PORTRAIT
CANDID
COMMERCIAL

439-1381

Delmar, N.Y.

THINKING OF EUROPE

This Spring/Summer?

THINK NOW

65-Day-Advance Purchase
FOR ALL FLIGHTS

London — \$268

Amsterdam \$299

Shannon — \$249

ABOVE MIN. FARES ARE
AIR ONLY

NEW VISTA TRAVEL

489-2594



DAN & BETTY DRYDEN'S SKI SCHOOL

for boys and girls ages 7-15
Saturdays — Jan. thru March.
All day instruction, practice, fun.

Transportation from Albany
& Delmar to ski areas provided.

For information & rates, phone:

462-5200

THE PAPER MILL

Hallmark
Card Shoppe!

We sell 13¢ stamps

Huge Selection of
BOOKS!

Office Supplies . . .

Party Goods Galore!

OPEN
Mon. Fri. 9-9
Sat. til 6 439-6888

Why not give a gift that lasts
it won't wilt and it's not fattening
Valentine's Gifts from \$5 to \$500

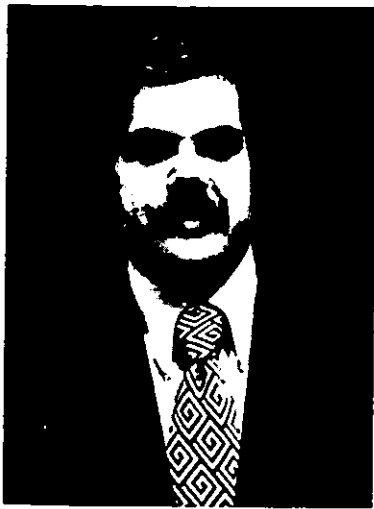
is at

9:30 to 5
Thurs.
to 8 p.m.

FRANK W. Adams

Registered Jewelers
58 North Pearl St.
Downtown Albany

FREE
PARKING
NEARBY



John C. Bennett

New sales manager joins Spotlight staff

John C. Bennett, a lifelong resident of the Albany area, has joined the Spotlight advertising staff as sales manager.

Bennett has been in sales and sales promotion work since graduating from Western New England College, Springfield, Mass. He was formerly associated with Guider magazine and with Spectrum Products, Albany. He is married and lives in Latham.

He heads a Spotlight sales staff that includes Polly McIntyre, Claudia Kirby, Charlotte Dale and Catherine Noakes. Mrs. Noakes, the paper's newest sales representative, is a former sales department manager for Sibley, Lindsay and Curr department store, Rochester, and assistant buyer for Bonwit Teller and Mercantile Stores, New York City. She is a graduate of Becker Junior College, Worcester, Mass., and lives in Westmere with her husband and 4-year-old twin sons.

Altar Rosary meets

The next regular meeting of the Altar Rosary Society of St. Thomas the Apostle Church, Delmar, will be held Wednesday, Feb. 11, at 7:30 p.m. in the school auditorium. There will be entertainment by the Ballet Workshop. Refreshments will be served. All women of the parish are invited.

Scouts to 'tune in'

Scouts of Troop 72 and Pack 72 of St. Thomas the Apostle parish, Delmar, will observe the 66th anniversary of Scouting on the "Table of the Lord" program on Feb. 8. Rev. Gregory S. Weider, diocesan scout chaplain, will celebrate the liturgy at 9:30 a.m. over TV channel 10.

Immediately following, there will be a demonstration of new media approaches developed for scout units under Catholic auspices in the United States. All Scouts and Scouters are invited to tune in.

Coffee for Bayh

A coffee to discuss the candidacy of Sen. Birch Bayh of Indiana will be held Friday at 10 a.m. at the home of Ann Brandon, 84 Parkwyn Dr., Delmar. The public is invited.

Sen. Bayh is one of several Democratic presidential candidates who will have a slate of delegates in the April 6 primary. The slate, which includes Mrs. Brandon and Laverne Hamilton of Elsmere, is headed by Jack Saurez of Albany. Those planning to attend are asked to call Mrs. Brandon at 439-4332.

PROFESSIONAL DRY CLEANING LAUNDRY
SUEDE AND LEATHER TAILORING SERVICE

HANDY DANDY CLEANERS

240 DELAWARE AVENUE
DELMAR, N. Y. 12054

Why have "someday" service,
When you can have "sameday" service?

WHEELER SMITH, JR.
MANAGER

439-4444

WATCH FOR OUR

GRAND OPENING

FEBRUARY 16-21

ROGER  SMITH

PAINT, WALLPAPER, AND FLOOR COVERING

278 DELAWARE AVE.
439-4468 — 439-4751

WALLPAPER FACTORY REPS and ARMSTRONG FLOORING REPS will be available at various times during the week for consultation.

Clip this coupon and be registered to win up to 12 sq. yds. ARMSTRONG FLOORING of your choice.

Name

Address

Phone

Drawing 5 p.m. Sat., Feb. 21st

Delmar's Newest One-Stop Laundromat & Dry Cleaning Facility

Featuring

- Absolutely Spotless and Excitingly Decorative Facility
- Convenient to all Shopping
- Plenty of Soft Hot Water
- Large Capacity Washers and Dryers
- Attendant Always on Hand
- Savings on bulk dry cleaning in our "Finespin" area
- Complete Vending Area

OPEN 8-10 7 DAYS A WEEK!

FABRIC CARE CENTER WASH & DRY CLEAN

Delaware Plaza, Delmar

INSURANCE

NATIONWIDE
INSURANCE



THEODORE H. WERE

Local Representative — Home & Auto Insurance

416 Delaware Ave., Albany — 465-8937

- Nationwide Mutual Insurance Co.
- Nationwide Mutual Fire Insurance Co.

Home Office: Columbus, Ohio



Uncle Remus (Jacqueline Devost) and Brer Rabbit (Lisa Paigo).

Stephen Dandeneau and Dennis McKenna in fourth-grade skit.

We'll make your
motor
sing



- Engine Tune-up
- Front End Alignment
- Automatic Transmission Service
- Modern Equipment
- Skilled Mechanics

BAILEY'S GARAGE

Phone Delmar 439-1446
Oakwood Road, Elsmere

1⁰⁰/day per person
CHILDREN FREE
Maximum 2⁰⁰/family

CROSS COUNTRY SKIING

INDIAN LADDER FARMS

2 mi. W. Voorheesville
on RT. 156

Skiing & Store Hours
9-5 Weekdays
10-5 Sundays

Phone 765-2956

- Several miles of trails
- Hot Cider & Doughnuts
at the Farm Store

Controlled atmosphere
MacIntosh now available

SALUTE TO HISTORY

An historic night at St. Thomas

Sioux Indians, Colonial dames, Olympic athletes and Disney characters will take their turns on stage next Thursday when students and teachers of St. Thomas the Apostle School, Delmar, put on a Bicentennial pageant.

The program, "America: a Tribute," will feature sketches, musical numbers and dances

tracing the history of sport and dance from pre-Colonial times. Director is Mrs. Virginia Bailey, gym teacher at the school, assisted by Mrs. Margaret Dorgan, music instructor. The production and theme was suggested by the school's new principal, Sister Jean Smith O.P. as a project to celebrate Catholic Schools

DELAWARE IMPORTS

579 DELAWARE AVE., Corner Mereline Ave., Albany, N.Y.

BOTTISTI'S SPAG. SAUCE & FROZEN PIZZA

ITALIAN BREAD & ROLLS, Fresh Daily

CAPPIELLO DAIRY PRODUCTS

ITALIAN SAUSAGE — Hot & Sweet

FETA CHEESE

COLD BEER

STORE HOURS:

Mon. thru Fri. 10 a.m.-8 p.m.

Sat. 9 a.m.-7 p.m. • Sun. 9 a.m.-1 p.m.

465-3762

BEDDING SALE!

BUY 1 SET AT REGULAR PRICE
GET 2ND SET 50% OFF

SALE ENDS FEBRUARY 21, 1976

This sale does not include delivery

BURRICK FURNITURE CO.

560 DELAWARE AVE., ALBANY, N.Y. 465-5112



Eighth grade girls: from left, front, Mary Reagan, Debbie Jeram; rear, Susan McCormick, Pat Wensley, Eleanor Hanks, Sheila VanWoert, Mary Davitt, Jennie Cummings.

Photos by Barbara Oliver



Eleanor Hanks and Sheila VanWoert model bygone gym suits.

Week. The nationwide observance will be held Feb. 8-14.

The entire school population of 275 pupils and 10 teachers will participate. Grades 1-5 will demonstrate early American dances and games, including tableaux. Upperclass pupils will recreate sounds and symbols of today and tomorrow in dance and gymnastics, including a tableau on the development of sports. "It's a real school-family affair," comments Mrs. Bailey.

Marshall's Garage Inc.

Route 9W — Ravena, N.Y. Tel. 756-6161

YOUR LOCAL TRANSPORTATION CENTER

4 Miles North of
Exit 21B N. Y. Thruway



15 Minutes South
of Albany

Low Cost Rentals

DAILY — WEEKLY — MONTHLY

(Example: Daily \$8.00 per day & .08 per mile)

northeast framing

FOR THE UNUSUAL IN CUSTOM FRAMING

1526 New Scotland Ave., Slingerlands
TUES., WED., THURS., SAT. 10-4

439-7913

HOT LUNCH SPECIALS DAILY

WED.-THURS. SPECIAL
JELLY ROLLS
99¢

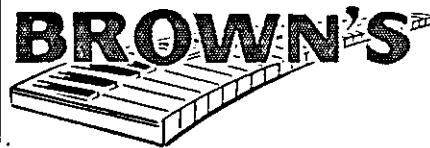
TAKE OUT ORDERS

439-9895 228 Delaware Ave., Delmar



Rent a new piano as low as
\$15.00 per month with option to buy.

Area's Largest Selection!



1047 Central Ave.
Albany, N. Y. 12205

Piano & Organ Mart Inc.

459-7777

Sam's Restaurant

SPECIALS THRU FEBRUARY 8

Shrimp Scampi (stuffed)

Veal Parmigiana

Veal Scallopini

Veal & Peppers

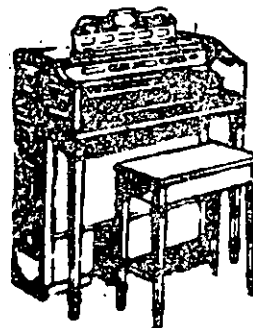
\$4.85

INCLUDES: Salad bar, spaghetti or veg. & potato^o

Complete Italian menu served 11:30 a.m. to 12:30 a.m.

125 SOUTHERN BOULEVARD, ALBANY

Closed Tuesday — 463-3433



THE CONN SOUND

... there is a
noticeable difference

CONN ORGAN
CTR. OF LATHAM



887 New Loudon Rd. (Rt. 9) 1/2 mile north of
the Circle (Next to Field's Plaza) 785-4988

Special Introductory Offer

Private 1/2 hr. lessons — limited enrollment

6 LESSONS — \$12⁰⁰

NEW STUDENTS ONLY YOU DO NOT HAVE
TO OWN AN ORGAN

• Lessons • Music • Lamps • Accessories

SALES — SERVICE, RENTALS

Open Tues. thru Fri. 10-9; Wed., Sat. 10-5:30

Closed Monday

'Klinger' coming

Jamie Farr, who plays the zany "Klinger" in the CBS hit series "M*A*S*H," will be one of the headliners of the an-

nual Cerebral Palsy telethon to be aired on WTEN-TV Feb. 14-15 from the Siena Alumni Recreation Center. In making the announcement, John M. Lang and Robert W. Freihofer com-

mented that this year's telethon is shaping up to be one of the most star-filled shows in the 16-year history of the 20-hour marathon event.

In addition to Jamie Farr

commitments have been received from Don Stewart of "The Guiding Light," TV star Meredith MacRae, Jon Walmley of "The Waltons" and Mary Stuart of "Search for Tomorrow."

Because you never know...



**Rent a Safe
Deposit Box from
Community State!**

COMMUNITY STATE BANK

People Are Our Business.

Safe Deposit Boxes Available at These Offices:

50 State St. in Albany
2695 Hamburg St. in Rotterdam
1815 State St. in Woodlawn



224 State St. in Schenectady
Town Squire Shopping Ctr.,
Rts. 9W & 32 in Glenmont

Member F. D. I. C. - Financial General Bank Shares Inc.

Conservancy walk Sunday

The Nature Conservancy will sponsor a "winter walk, ski or snowshoe" through Whitbeck Grove, New Scotland, on Sunday (Feb. 8). Persons interested should meet at 11 a.m. at the entrance to the grove, first left going west on Rt. 85 beyond the New Scotland Rd. railroad underpass. Shelter will be available at Five Rivers Environmental Center for those who want to bring their lunch. For information call the Nature Conservancy office, Altamont, 861-6860, or the Nature tape on Feb. 8 at 377-9600.

WW2 veterans meet

All veterans are invited to the monthly luncheon of the World War 2 veterans of Blanchard Post, American Legion, Delmar, at Schrafft's Motor Inn, Rt. 9W, Glenmont, Monday at 1 p.m.

Talk on finance

Guy A. Peterson of Bankers Trust Co. will speak on taxes pertaining to estates Monday, Feb. 9, from 1 to 3 p.m. in the third of a three-part series on "Money Management for Today's Women" sponsored by the Albany section of the National Council of Jewish Women. The seminar will be held at the Community room of Mayfair Home Furnishings, Wolf Rd., Colonie.

O'SHEA
Getty
STATION

4 Corners, Delmar

**LUBE SERVICE AND
COMPLETE MECHANICAL
REPAIRS**

Open 7 days, 7 a.m.-9 p.m.
- 439-9808 -

1976 'Delmar Day' set for Sarasota

There will be another "Delmar Day" at Sarasota next month, this time without a gasoline shortage cutting attendance.

Laurence R. "Larry" Moses, the event's chief organizer, reports from Sarasota that the big day will be March 1 at the Sarasota Mobile Home Park recreation building, 2100 E. Laurel St. starting at noon. Lincoln Peterson will be master of ceremonies. All former and present Tri-Village area residents are invited to bring their own lunches. Coffee and soft drinks will be served, along with music and a slide show of the 1975 reunion, which drew 110 people.

Larry asks persons planning to attend to notify him at 3519 Village Green Dr., Sarasota, or a member of his committee. He writes: "Last year's committee is continuing to serve, including Petersons, Glicks, Phears, Williamses, Moses, Holmes, Don Dewire and the Harringtons. Volunteers to help next year will be welcomed."

The reunion will be Sarasota's 8th annual "Delmar Day."

Bicentennial meeting

The public is invited to attend the next general membership meeting of the Bethlehem Bicentennial Committee at the Delmar Office of The National Commercial Bank and Trust Company on February 9, 1976 at 8 P.M. Organizations and clubs throughout the Town are asked to submit their Bicentennial-related programs and projects.

Mary is back

Mary Eisenhower of Mele's Beauty Salon, Delaware Plaza, has returned from France where she was awarded a diploma by Institut de Beauty, Paris.

The course was conducted by leading hair stylists of Paris and featured the latest trends for spring and summer of 1976.

REALLY OUT OF SHAPE

A special Women's Exercise Class designed especially for YOU.

Modified Exercise
Monday — 11 a.m.
6 classes — \$9.00

Mary Reich 439-2058

Working Personnel

How Much More Money Could You Be Earning Each Week?

ENROLL TODAY

Court Reporter Sr. Stenographer
Hearing Reporter Stenographer

Prepare yourself for these better positions by enrolling now in either day or evening classes.



STENOTYPE SCHOOL OF ALBANY

HOME SAVINGS BANK BLDG.

11 N. Pearl St., Albany, N.Y. 12207 PHONE 465-1716 924 HOURS)

STENOTYPE TOUCH SHORTHAND CLASSES

Approved for Veterans Training
Day & Evening Classes starting February
Licensed by N.Y.S. Education Dept.

Virginia Lynch

is having a

50% OFF SALE

of her

finest feminine fashions

*Dresses, Coats, Suits, Sportswear, Accessories
& Lingerie*



230 Delaware Ave.
Delmar
439-9005
Thurs. 'til 8



40 Maiden Lane
Downtown Albany
434-2013

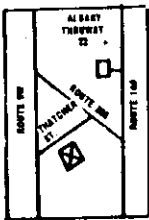
La Casa

Is Pleased To Announce
that a completely new
SALAD BAR
has been added to
compliment our fine cuisine. •

DON'T BE A WINTER SHUT-IN!
Take time to relax and enjoy dinner with some friends.
Every Fri. & Sat. dance to the music of the
Beverly Gage Trio Til 1 A.M.

You'll be delighted to find our food to be of
the best quality, and our atmosphere warm
and friendly.

LOUNGE OPEN TIL ?
LUNCHEON AND DINNERS TIL 10 P.M.
• **OPEN 7 DAYS A WEEK** •
THATCHER ST., SELKIRK 767-9045



SUPER \$1.00 RUG CLEANING SALE!

Have one rug cleaned and we'll clean another one (the
same size or smaller) for one dollar.

And while your saving, your also getting the Best Cleaning Money Can Buy

NOTE: This offer is limited to One \$1.00 Special Per Customer, and Must
Be Accompanied by this Ad clipped from this newspaper. Our usual mini-
mum rates apply.

OFFER EXPIRES FEB. 15th, 1976

Careful

PHONE
235-3110

CARPET WORLD CARPET CLEANERS
119th St. & Sixth Ave., No. Troy



From Paris To You!

We have a secret, but we will share it —
O' La La! The hair styles for 1976. We studied the
latest in creations by Alexandre and other famous
artists.

Let us create a "new you." For consultation,
call Mary.

Mele's Beauty-Salon

11 DELAWARE PLAZA

Mon.-Fri. 9-9
Sat. 9-5

439-4441

Rev. Thomas retires

The Rev. Robert B. Thomas, senior minister of the Delmar United Methodist Church, Delmar, has announced his retirement effective in June.

The Rev. Thomas, his entire ministry served in the Troy Conference of the United Methodist Church, has been pastor of the Delmar church since 1963. He was called here after a year's term as district superintendent of the 80-church Albany district of the conference.

He holds an AB degree from Ohio Wesleyan University and the M. Div. degree from Yale University Divinity School. He was ordained deacon in the Troy Conference in 1936 and received elder's orders in 1938.

He has served churches in Averill Park, Sand Lake, Glens Falls, the Albany Street church in Schenectady and Cobleskill. He served "Federated"

churches, United Methodist churches yoked with other denominations, in Peru and Stillwater.

He is married to the former Elizabeth Townley, Ballston Spa. They have three children, Roxana Griesmer of Oneonta, Linda Dahl of Cobleskill and Terry W., a captain in the US Army Intelligence, Fort Monmouth, N.J. They have five grandchildren.

Paper drive Saturday

Boy Scout Troop 71 of St. Thomas Church, Delmar, is having a paper drive on Saturday. Anyone wishing to donate old newspapers or magazines may bring them to St. Thomas Church parking lot on Delaware Ave. between 9 a.m. and 1 p.m.

**SUBSCRIBE TO
THE SPOTLIGHT**

CRUISES • VAIL, COL. • ST. LUCIA • BANFF

"YOUR DEPARTMENT STORE OF TRAVEL"

JOHN G. MYERS TRAVEL CENTERS

**FLY TO THE ITALIAN FLOATING RESORT
AND CRUISE THE CARIBBEAN**

8 Days 7 Nights
5 Islands & South America from **\$540** (incl. air fare from N.Y.C.)

or **SS OCEANIC THE ITALIAN FLOATING
RESORT FROM NEW YORK CITY**

Mar. 8, 10 days **\$645** | Mar. 18, 9 days **\$580**
4 ports from | 3 ports from

March 27, 7 days, 1 port from **\$395**

BANFF

Lake Louise, Norquay & Sunrise Village, 6
Days, 5 Nights, minimum **\$324 to \$343.**

VAIL

8 Days 7 Nights; 6-day lift pass and
accommodations. Minimum **\$341 to \$418.**

MEMBER



Delmar
open
Saturdays
9 am - noon

ALBANY:
37 NO. PEARL ST.
434-4131

DELMAR:
210 DELAWARE AV.
439-7671

TRINIDAD • HAITI • ACAPULCO • MARTINIQUE

B
A
H
A
M
A
S
•
S
A
N
J
U
A
N
•
A
N
T
I
G
U
A
•
J
A
M
A
I
C
A
•
A
U
S
T
R
I
A

B
A
R
B
A
D
O
S
•
I
S
L
A
N
D
S
•
Z
E
R
M
A
T
T
•
A
S
P
E
N

Elks auxillary to meet

Ladies' Auxiliary B.P.O.E. No. 2233 will hold its February meeting at the Lodge on Wednesday, Feb. 11 at 8 p.m. A Chinese auction will be held for the benefit of major projects. Hostesses will be Mrs. Lorraine Rizzo and Mrs. Jerry Hausmann.

Sweetheart ball planned

Ladies Auxiliary of Bethlehem Lodge B.P.O.E. No. 2233 will sponsor a Sweetheart Ball Feb. 14 at the Lodge. Ways and means chairman is Mrs. George DeSorreau. Mrs. Theresa Kochan will have charge of the table decorations, assisted by Mrs. Peggy Donato. A King and Queen will be chosen and honored as in the past five years.

There will be a cheese table at 6:30 p.m. and cocktails will be dutch treat. Dance music will be by the High Towners from 9 to 2.

Bruce Blodgett

Friends and relatives of Jack Whipple, Bethlehem Central swimming coach, were surprised by last week's Spotlight identification of a purported photo of him. The impostor was Bob Keens, Jack's diving coach, and the mixup was the Spotlight's. Here is a much better likeness of Whipple, giving instruction to one of his swimmers.

PILOT'S ACCELERATED GROUND SCHOOL

- 1 PREPARE YOURSELF for FAA Exams and Flight School in one 3 day weekend !!
- 2 AERONAUT is a GROUND School Specialist -
- 3 We furnish a written 100% GUARANTEE!
- 4 Half price for 2nd family member course -
- 5 Master Charge or BankAmericard accepted -
- 6 All instructors FAA Certified -
- 7 AERONAUT brings the Complete FAA Preparation Package to YOU!
- 8 OUR Graduation Certificate allows you to take your FAA Exam immediately!
- 9 WE FURNISH ALL STUDY MATERIALS (Bring ploter & computer)
- 10 COMPARE OUR COURSE: Call us Collect (315 865-5683) or MAIL COUPON BELOW -



ALBANY, N.Y. - FEB 21, 22, 23, Central Ave. HOLIDAY INN. 8:30 am - 6:00 pm

AERONAUT AVIATION®

R4 BOX 97 ROME, N.Y. 13440 315 865-5683
ENROLL ME IN THE FOLLOWING SEMINAR: (CHECK BOX)

NAME _____

ADDRESS _____

CITY _____

STATE _____ ZIP _____

MY TELEPHONE NO. _____

BEST TIME TO CALL _____

I have enclosed a deposit of \$25.

PRIVATE \$95
 COMMERCIAL \$95

INSTRUMENT \$115

Credit Card ::
 BankAmericard
 Master Charge
BANK NUMBER

NOW...IN OUR

Ladies Left

THE SALE YOU'VE BEEN WAITING FOR!

* End of Season *

CLEARANCE
Of Famous Maker
WOOLEN
SPORTSWEAR
33-1/3% OFF



Save now on sweaters, vests, skirts, jackets, pants, capes . . . in bold tartan plaids and solids.
SAVE 20% ON 100% WOOL BLANKETS FROM A VERY FAMOUS MAKER, TOO!

"FAMOUS NAME"
OUTERWEAR
33-1/3% OFF



Famous Maker Outerwear . . . at end of season saving! Choose from a selection of parkas, fur trimmed, untrimmed, or fake fur pant coats.

MOORE'S TRADING POST

ROUTE 9W, RAVENA, NEW YORK 12143

SHOP DAILY 9 to 9 • SAT. 9 to 5

PHONE: (518) 756-2558

Toole's

RESTAURANT
283 Delaware Ave.
Delmar, N.Y. 439-9111

Effective FEBRUARY 1st
OPEN SUNDAYS

8 A.M. to 8 P.M.

Breakfast till 12:30 P.M.—Lunch & Dinner till 8 P.M.
ATTRACTIVE FAMILY PRICES

Don't Bury Your Head
in the snow



Hurry
over to

Feasel's Tax Service

306 Delaware Ave., Delmar
Office 439-9650 Home 439-5084

EARLY BIRD SPECIAL: 10% Discount
till Feb. 15 with this ad!

*"Over 45 years experience
means
dependable service & installations"*



Heating Service

Fuel Oil • Kerosene • Gasoline
• Oil & Natural Gas Burner Service •

COMPLETE INSTALLATION OF:

- ... Heating Systems
- ... Air Conditioning
- ... Humidifiers
- ... Air Cleaners

— **24 HOUR EMERGENCY SERVICE** —
Radio Equipped Trucks

318 Delaware Ave., Delmar •439-7605

HELDERBERG SCENARIO

A snowy trail in the orchard

Second of 2 articles

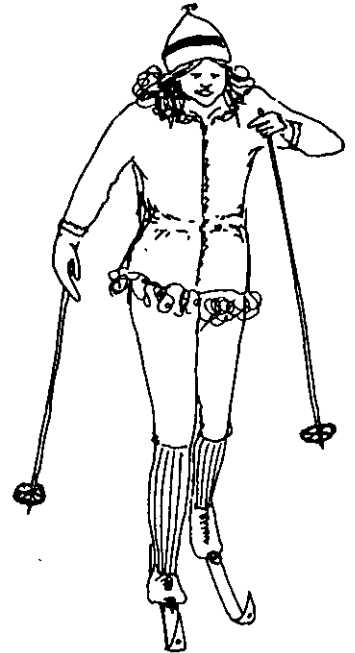
It was mid-afternoon when Dick and I started out on the snowmobile along the snow-covered trail through the orchards at Indian Ladder Farm. Halfway along I decide this spot is good for people and snowshoeing too, so I take off on my new Christmas presents to finish the trail on foot. The sun, which has never traveled very near its spring zenith today, is about to set behind the Helderbergs and call it a day.

Every branch and twig seems to jump out at me as the shadows etch themselves more deeply. Each minute that passes brings new kinds of light and shadows. Now the sun is suddenly gone. Whereas only a few minutes before the snow and sky had contrasted brilliantly, the snow now takes on the sky's blueness. Trudging along the trail's surface I almost hate to blink because I might miss that magic moment in a winter dusk when the hue of sky and snow coincide.

Skiers on the trail

In the gathering blueness, thinking myself totally alone, I jump when I hear voices. A pair of cross-country skiers with their easy sliding motion gain on me rapidly. It's Peter and Mary Jane Ten Eyck. They stop, and I learn that Peter is out to check the condition of the trail and to see if any of the young trees are being damaged by deer and mice.

Peter tells me that in order for the farm to continue its an-




nual production of 50,000 bushels of fruit — pears, plums, and 25 varieties of apples, new trees must be constantly planted and nurtured. Mice and deer are especially fond of the tender growth on new trees, and it's a big job to get a tree to five years of age when it can begin to produce.

Orchard-tending a science

Peter, finding an enthusiastic listener, tells me that although all the trees look alike in the winter, several varieties may be found in a single row. Even as an orchard is much more than just Pound Sweets, Empires, Macouns, so is every tree.

All apple trees on the farm are actually 2 trees of different

Encounter 

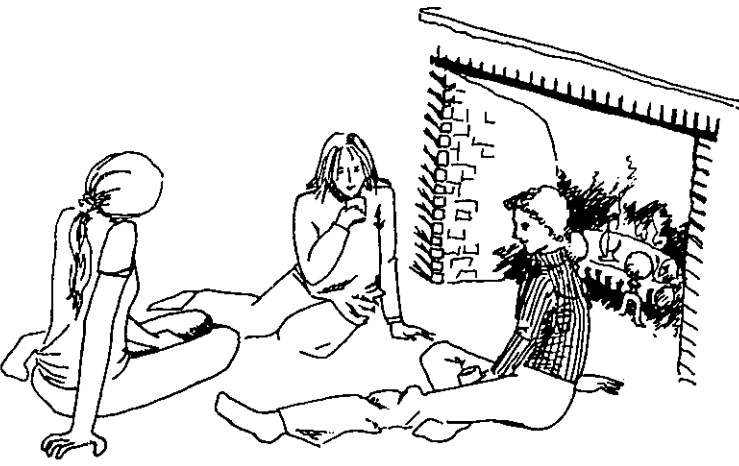
253A Delaware Ave.
Delmar, N.Y.
439-7261

Blouse Sale!

Lady Manhattan

Huk-A-poo
Reg. \$20-22 **\$9.95**

*Ladies
Fashions*



Sketches by A. Laurie Palmer

varieties grafted together — one tree growing downward as the tree's roots, and one tree growing upward as the tree's branches. This enables farmers to have trees with strong root-systems and strong branches producing the varieties they need.

trail she will think of the trees — how their beauty, growth and complexity escape the unpracticed or jaded eye.

Because my snowshoes make for slower, yet more relaxed going than skis, I am the last to return to the big brown-shingled barn. At home, later that evening sharing hot cider with my family, I try to explain about the shadows, the blue snow and the naked trees with their winter secrets. But only those who have seen these things can ever really know.

A winter day ends

Darkness is really coming on. The atmosphere is Caribbean blue. Mary Jane muses that this time of day makes her pensive, and that as she glides through the rest of the

CLEARANCE SALE
Great Savings
30% OFF STOREWIDE
 All Merchandise Direct from Factory to You.
RAVENA DRESS SHOP
 111 MAIN ST., RAVENA, N.Y.
 MASTER CHARGE BANKAMERICARD

Continuing Our Removal Sale
 All Our Stock Reduced Up to 75%
 Fabrics, Yarns, Notions, Trimmings,
 Needlework Kits and Supplies

SLIP COVER SPECIAL

CHAIR — 1 cushion **SOFA** — ^{UP TO} 3 CUSHION

\$59.00 **\$99.00**

FABRIC AND LABOR COMPLETE

All Our Curtains Reduced
NOW \$1 and up — All Styles

CUSTOM-MADE DRAPERIES

All Our Fabrics
 Labor & Lining **20% OFF**

FREE SHOP-AT-HOME SERVICE. CALL US

DELMAR DECORATORS
 439-4130 — DELAWARE PLAZA, DELMAR
 Daily 10-9 — Saturday 10-5:30

Beautiful Party Cakes
 by **FAITH REED**
 439-5640
Tastes as good as they look!

Wallpaper Sale — —
FEB. 2-28
UP TO
50% OFF!

ROGER SMITH

Paint, Wallpaper and Floor Covering
 278 Delaware Ave.
 439-4468

Starting The Bicentennial Year Right!

SCHRAFFT'S
ALBANY MOTOR INN AND RESTAURANT, INC.
 Route 9W Glenmont, New York 465-8811

- **FRIDAY SPECIAL —**
 Delicious FRIED HADDOCK DINNER **\$376**

- **SATURDAY — "The Spirit of '76 Smorgasbord**
 Enjoy Delicious carved Beef, Ham, Lobster, Shrimp, Seafood Newburg, Assorted Potatoes, Vegetables, Salads. Dessert and Beverages **\$776**
 *FREE Glass of Burgundy)
 (.76 Off each additional person)
 Strolling Accordion Player Joe DiLorenzo Saturday Night

- **SUNDAY BRUNCH — Served 11 A.M.-2 P.M.**
 Enjoy a Delicious BUFFET BRUNCH
 And a Relaxing Sunday. **\$376**
 Daily Dining Mon. thru Sat. 6:30 A.M. to 3 P.M.
 and 5 P.M. to 9:30 P.M.
 Sunday 6:30 A.M.-2 P.M., 3 P.M. to 9:30 P.M.

Sidewheeler Lounge
HAPPY HOUR . . .
 Mon. thru Fri. 4:30-6:30 P.M.

MINUTE MAN MARTINI 76¢
 FREE Hot & Cold Hors d'oeuvres

*LIVE ENTERTAINMENT
WED.-SAT. 9 P.M.-1 A.M.
 *Banquet & Meeting Rooms Avail.
 Global Menu Club Not Valid

CLASSIFIEDS

Classified Ads are 15¢ per word (\$1.50 minimum) payable in advance before 4 p.m. Friday for following Thursday publication.

Come in person or mail your ad with check or money order to
154 Delaware Ave., Delmar.

439-4949

439-4949

APPLIANCES

Bob Sowers' DELMAR APPLIANCE

Complete Line of
RCA Victor - Whirlpool

SALES & SERVICE
239 Delaware Ave., Delmar
Phone 439-6723

CARPENTRY

Frank Pomakoy General Carpentry

Repairs, Remodeling, Roofing, Ext. Painting, Additions, Kitchens, Bathrooms, Paneling, Playrooms, Ceilings, Floors.

Free Estimates **767-9460**

BUILDING REMODELING T.H. DEERE & SONS

Rarick Road, Selkirk
Playrooms, Kitchens, Dormers
Roofing, Baths, Siding
767-2361

Quality Construction

ALL TYPES BUILDING
REMODELING & REPAIRS
REASONABLE PRICES
FINE CRAFTSMANSHIP
FREE ESTIMATES
768-2341

CARPET CLEANING

Don't Have Dirty Carpets!
Let us clean them
professionally for you
STEAMEX method
Scotch Cleaning service
439-4857

CHILD CARE

LOVELY COUNTRY HOME, 24 hour
service, 50¢/hour, 767-9537.

**SUBSCRIBE TO
THE SPOTLIGHT**

CLEANING

P.D. CLEANING SERVICE

We specialize in all type offices.

765-2598

DRAPERIES

CUSTOM DRAPERIES

Shop at home. Large fabric
selection. Bedroom ensem-
bles for that personal touch
Call Barbara 872-0897

EXERCISE EQUIPMENT

Exercise equipment bikes, rowers,
joggers, steam, sauna, and whirl-
pool baths. Viking Health Equip-
ment. 465-5011 5125

FIREPLACE WOOD

WELL SEASONED firewood for
sale. Also by truckload. Will del.
768-2874. 61311

Furniture Refinished

EXPERT FURNITURE refinishing.
Drapes made to order. Also antiques
for sale. Phone 766-4664.

HORSES BOARDED

JOSEPH'S TROUBADOUR STA-
BLES, riding lessons, pony rides.
Training. Rt. 9W 767-9537.

TORCHY'S TACK SHOP

Jericho Rd., Selkirk
RO 7-2701
Mon.-Sat 9-9
Boarding & Training Stables
Riding Supplies & Saddles
Lessons • Indoor Arena

INTERIOR DECORATING

INTERIOR DECORATING - Delmar
Decorators, Delaware Plaza, Call 439-
4130.

KECK'S DRAPERY CO.

Custom Draperies,
Slip Covers, bedspreads.
Large Fabric Selection
Attractive Prices . . .
. . . Home Service
Call **JOAN KEMMER 459-4167**

TYPING SERVICE

LEE'S TYPING SERVICE

Statistical, Financial state-
ments, Manuscripts, Term
papers, Resumes, Corres-
pondence, Billing, etc.

159 Delaware Ave. (Rear)
Elsmere, N.Y.
(Opp. Delaware Plaza)
439-4185 439-9108

MASON WORK

EXPERIENCED, all types masonry,
new or repairs, Guidara. 439-1763 eves.

CHIMNEYS, foundations, slabs, side-
walks, steps, stones, brick, water-
proofing, carpentry. 439-1593.

MOTORCYCLES

YAMAHA • TRIUMPH MOTORCYCLES

Sales & Service
Parts & Accessories
DAVE FLACK
Rt. 9W, Ravena • 756-2900

MOVERS

D.L. MOVERS, Inc. 439-5210. Local
and long distance, no job too small.

DAN DONNELLY MOVING and
trucking. Delivery service. Free esti-
mates. 767-2711.

PERMANENT WAVING

SPECIALIZING IN Breck, Realistic
Rayette and Caryl Richards perman-
ents, hair tinging and bleaching. Mele's
Beauty Salon. Plaza Shopping Center.
439-4411

Painting & Paperhanging



D.L. CHASE

Painting
Contractor

Residential Specialists

Phone 768-2069

DON VOGEL Painting Contractor
— exterior, interior, paperhanging,
repairs, 20 years experience. 459-
0989, 489-7914. **tt**

VOGEL PAINTING CONTRACTOR

Interiors - Exteriors
PAPERHANGING
COMMERCIAL SPRAYING
Free Estimates - Guaranteed
INSURED **439-7922**

PLUMBING

B. P. WOOD Plumbing & Heating

24 Hour Service
Phone 439-9454

PLUMBING & HEATING

ABLE, HONEST — I do plumb-
ing, heating, bath & kitchen
remodeling. Free est. Low pri-
ces. 465-4078, if no ans 235-5394

R. A. CROWTHER
Plumbing & Heating
Water Heaters — Boilers
Kitchens — Bathrooms —
Home Repairs — Reasonable
Phone 434-1059

SEPTIC TANK SERVICE

NORMANSKILL SEPTIC TANK
Cleaners. We install dry wells, septic
tanks, drain fields. 767-9287.

DELMAR SANITARY Cleaners, ser-
vice Tri-Village Area, over 20 years.
768-2904.

ROOFING

ROOFING



Asphalt. Slate. Built-up,
Wood Shingle. Gutters, Ice
Slides. Repairs. Insured,
Guaranteed.

FREE ESTIMATES
VANCANS
439-3541

ROOFING

Serving the
Bethlehem Community
for years.



Vanguard Roofing Co.

Where Superior Workmanship
Still Means Something!
Call **JAMES STAATS**
for a free estimate 767-2712
Fully Insured.

Sewing Machine Repairs

SEWING MACHINES REPAIRED.
Work guaranteed, Delmar Decorators,
3 Delaware Plaza, Delmar, 439-4130

WELL KNOWN JOHN BESSON re-
pairs all makes of sewing machines,
in your home, free estimates. Sells
second hand sewing machines, guar-
anteed for one year. 463-2520.

SKATES SHARPENED

SKATES SHARPENED Ice skates
sharpened. Also saws, chain saws,
scissors, knives, garden tools, etc.
439-5156 or 439-3893. tf

CROSS-COUNTRY SKIERS

Meyers
Bicycle
Center



TOPPEN HARJU
Rentals - Sales

1958 New Scotland Rd. 439-5966

ROOM WITH BOARD

Parents boarded: lovely country
home. Visit with them anytime 767-
9537. tf

TREE SERVICE

HERM'S TREE Service, Call IV2-5231

TABLE PADS

TABLE PADS - made to order:
Delmar Decorators 439-4130.

TRUCKING

PIANOS, APPLIANCES, light truck.
Call for free estimates. 456-3155.

SITUATIONS WANTED

PRIVATE BARTENDING for all
occasions. 439-2875 6t129

TRASH REMOVAL reasonable
rates. Call 439-2372. 2t115

WINDOW SHADES

CLOTH AND WOOD SHADES in
stock and to order. Delmar Decorators.
439-4130

WATCH REPAIRING

EXPERT WATCH AND JEWELRY
REPAIRS. Diamond settings, engraving
wedding and engagement rings,
reasonable, your trusted jeweler, Le-
Wanda, Delaware Plaza Shopping Ctr.
439-9665.

WATCH REPAIRING, expert work-
manship. All work guaranteed. Also
engraving, diamond setting watch
bands. Harry L. Brown, Jeweler, 4
Corners, Delmar, 439-2718.

WANTED TO BUY

GUNS OF ALL KINDS bought for
Cash - Moore's Trading Post, 9W,
Ravena. 756-2558.

AUTOMOTIVE

1971 COUGER, 351 cu. in., exc.
condition, best offer, 489-2595, 9
to 5. 2t122

TOP PRICES PAID FOR CORVAIRS

all models

Contact John Murray
489-5551

Marsh Hallman Chevrolet

781 CENTRAL AVE.
ALBANY, N.Y.

Business Opportunities

PUBLISHER NEEDS LOCAL AG-
ENTS Clip news items, Solicit ad-
vertising, subscriptions, and agents
by mail, from your home, part or
fulltime. Send \$1.00 for sample
issue & details, Indy Publishing,
Box 24414-N Indianapolis, Indiana
46224 3t25

INSTRUCTION

GUITAR INSTRUCTION

SUNYA Music Graduate
accepting new students
from Delmar-Voorhees-
ville area. Beginners and
advanced students of any
age accepted. Call Kyle
Keenan 456-5241.

HELP WANTED

AVON

Want your own business? Be an
Avon Representative. Sell quality
products, make your own hours.
Call today:

Mrs. Callisto - ST 5-9857

DECORAMA Party Plan. Sell home
accessories - finest quality. Phone
785-0893.

Merchandise for Sale

ADDRESSOGRAPH machine,
Elliott Model 2000 with stencils.
Inquire Spotlight, Box BL. tf

BROWN EGGS at the farm, strictly
fresh. 439-2291. 2t25

MAHOGANY BREAKFRONT, 5'10"
x36". Excellent cond. Call 465-6680
evenings. 2t25

COMBINATION LATHE, Bench-
saw, jig saw and grinding wheel.
1/3 hp motor. Call 465-6680 eve-
nings. 2t25

UPRIGHT PIANO, excellent condi-
tion, apartment size stove, like new.
Gun-type furnace oil burner, good
condition. 767-9833.

SOFA AND CHAIRS - traditional
86" cut velour, lime sofa \$400.00;
matching barrel chairs, white/lime
cast \$120.00; hi-back striped chair
\$150.00. 439-5230.

EXECUTIVE DESK and chair. Good
cond., \$25.00. Sofa bed, \$35.00.
439-2614.

SUNBEAM SNOW CHAMP, 200
foot electric cord, 3 horse power
18 inches wide, 767-9120 after 5:30
p.m.

MAGIC SHOWS

MAGIC SHOWS for all occasions.
Reasonable rates. 768-2050 after
4 P.M. 2t212

Real Estate for Rent

APARTMENT, single room with
eating area, bath, garage, utilities,
\$100.00. 439-6880.

BRAND NEW large luxury duplex.
2 bedrooms, 2 baths, garage, full
basement, large yard, air-condi-
tioned. No pets. Delmar. \$275/mo.
439-1342 9 A.M.-8 P.M. 4t226

1 BEDROOM APARTMENT in
country home. Suitable for 1 per-
son only. \$160 mo. 439-3893.

OFFICE, professional, or small re-
tail, in renovated residence. 4-
Corners, block, Delmar, lay out
your specifications. 700 plus square
ft. Mr. Ray, 482-3307, leave mes-
sage.

FURNISHED, one bedroom apart-
ment. Heated. Private entrance.
Singles only. No pets. \$110 per
month. Van Wie's Point. Call after
5 - 465-6680. 2t25

COME HEAR THE NEW '76 SAAB STORY!!

New Salem Garage

Route 85
New Salem, N.Y.

Get the COMPLETE story
of this area in the Spot-
light every week of the
year. One way to be as-
sured of receiving the
next 52 issues is to fill in
the blank below. Yes,
we'd like to add your
name to an ever-growing
list of PAID subscribers!



SPOTLIGHT, 154 Delaware Ave., Delmar, N.Y. 12054

renewal

Please enter my new subscription to the Spotlight. I have
enclosed \$4.00 for the next 52 issues.

NAME _____

STREET ADDRESS _____

P.O. _____ ZIP _____

WANTED TO RENT

4 BR HOUSE, good condition, under \$300. Bethlehem school. 439-0094 after 6.

RECENTLY BURNED-OUT family needs 2-3 bedroom apartment, B.C. School District. Around \$180/mo. heated. 456-1495.

IN DELMAR — large room, suitable storage household goods, in vacant house or store. Will provide own insurance. Spotlight Box K.

Real Estate for Sale

MOBILE HOME for sale, 1973 Somerset with 12x7 slide out, 3 bedroom, fully skirted with porch, set up in court. Asking \$6,500.00. 767-3487 or 767-3390. 42129

SITUATION WANTED

TRASH REMOVAL, reasonable rates, call 439-2372. 2t25

BABYSITTING — my home, Monday thru Friday. 439-0536. 2t25

PERSONALS

"GRAPEFRUIT PILL" with Diadax plan more convenient than grapefruits. East satisfying meals and lose weight. Plaza Pharmacy, Delmar. 3125

PETS

HEALTHY, FUN-LOVING puppy, wants home in return for loyalty and companionship. German Shepherd -Labrador Retriever. 439-1874.

LOST & FOUND

WHITE MALE CAT — black head markings, lost Elsmere Area. 439-6940.

LIGHT TRUCKING

Attics & Cellars Cleaned
Also
Tree Cutting
Phone MARK 439-1692

TENNIS RACKETS

Restrung — Regripped
VIOLINS REPAIRED

BOWS REPAIRED

C. M. LACY — 3 Becker Terrace
439-9739

FRESH GROUND HAMBURGER

For your table or freezer
99¢ lb.

We can fill any order!
We deliver!

WOODRIDGE FARMS
434-8903

DELAWARE HOUSE

323 Delaware Avenue
Delmar, New York
439-5660

Victorian mirror back sofa, mint condition, Circa 1860, \$400.00. Victorian love seat, mint, \$175. Winthrop desk, mint, \$250. Victorian platform rocker, mint \$100. Cherry one drawer stand, old, \$75. Solid cherry side board, old refinished \$300. Heavy carved walnut dining room table \$50. Walnut Victorian hat rack, porcelain tips, mint. Glassware, china collectables, Nippon, R.S. Germany, Heisey, Kerosene electric lamps and other items to numerous too mention.



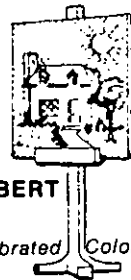
BUYING
OR
SELLING
PROPERTY?

Is Your Ad in the
NEW Spotlight?
Call 439-4949

Be creative
be correct...
COLOR STYLE
YOUR HOME

with
PRATT & LAMBERT
PAINTS

in exclusive Calibrated Colors*



Ed Dillon

EMPIRE PAINT COMPANY
142 Central Avenue
Albany, New York 12206
Phone: 449-5400

Library to exhibit rubbings and photos

During the month of February, the Bethlehem Public Library will have two interesting and different exhibits in its entrance corridors.

One is a collection of Early American Tombstone Rubbings by Dr. Bertha Wakin of Delmar. Dr. Wakin is chairman of the Department of Business Education at the State University of New York at Albany.

The other corridor exhibit is a collection of photographs by Steve Farina, a junior at Bethlehem Central High School. His interests in sports and cars are reflected in his photographs, but he plans to expand his hobby into a career in film and TV production.

Poetry reading Wednesday

Through a grant from Poets and Writers, the Bethlehem Public Library is able to sponsor a poetry reading by Lyn Lifshin at 7:30 p.m. on Wednesday, Feb. 11. There is no admission charge.

Lyn Lifshin, the author of 20 published volumes, has also been published in literary magazines and in many poetry periodicals.

Cubic Kum Quat

Bethlehem Central High School Wind Ensemble will hold its annual Cubic Kum Quat Night Club on Saturday beginning at 8 p.m. in the high school cafeteria. The traditional and popular event will feature dancing, entertainment and a buffet. Tickets cost \$5 a couple and \$3, for a single and may be purchased at the door.

According to Sam Bozzella, supervisor of music for Bethlehem schools, proceeds will be used to pay expenses for an anticipated trip by the Wind Ensemble in May to Washington, D.C. and Prince George County, Virginia. The local music group will perform on the White House lawn and at Parkdale High School in Riverdale, Va.

Vox Pop

Vox Pop is open to all readers for letters in good taste on matters of public interest. Letters over 300 words are subject to abridging by the editor. All letters must be signed but names will be withheld on request.

Enjoying Spotlight

Editor, The Spotlight:

I am returning the subscription card and my check. This letter is to express my very best wishes for your venture with The Spotlight and to say I am finding it very interesting and enjoying a number of the rearrangements and innovations. I am very happy to be a subscriber.

Slingerlands Ruth M. Miner

Needed: tax reform

Editor, The Spotlight:

Although the state constitution, for example, provides that a system of "common" schools be maintained, the principal burden of financing them has been carried by local governmental units, and this is true in many other states. The vehicle used has been mainly the regressive, onerous and visible local property tax.

In recent years continuing real cuts in percentage allocations from federal and state operating funds have only aggravated the situation, culminating this year in President Ford's and Governor Carey's proposals to withhold even more support for local services. I hope we would all agree the financing system

If I Were Renting a

FLOOR
SANDER

I'D CALL

HILCHIE'S

439-9943

needs reform top to bottom, but not at the expense of the quality of the educational program nor access to it.

Delmar Janet Butlin

Blood bank record

Editor, The Spotlight:

This is a belated "thank you" to the Spotlight for helping to make our December Gift of Life Month and our Gift of Life Sunday so successful. Your use of the articles and photos throughout the month, capped by the space in the Community Corner in the Dec. 26 issue, helped keep the public aware of the continued need for blood by the 31 hospitals in our region.

This year we were able to meet this need — a bit over 1,000 units of blood each week — and to set a new record of 4,998 units for the month of December. On Gift of Life Sunday (Dec. 28) in Albany, we achieved 94 percent of our goal of 240 units for the day, an increase of 26 percent over the previous year.

Albany Joseph A. Constantino
Northeastern New York
Red Cross Blood Program

That mailbox sketch

Editor, The Spotlight:

Congratulations — the New Spotlight is already a big improvement.

We noted with amusement the New Yorker-like sketch of the Carstead Dr. mailboxes (Jan. 22). Though we read every page, we found no other reference to 'our' street and concluded it was simply a suburban sketch.

Best wishes for continued success at the Spotlight.

Slingerlands Ann A. Eberle

That's just what it was — a strictly local sketch. We will have more like it from time to time, and thanks to the Helderberg Sun's Slingerlands correspondent for her warm encouragement.

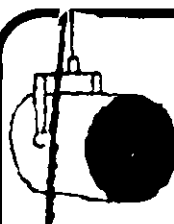
Ballot boobytrap

Editor, The Spotlight:

Voters are going to be boobytrapped at the April 6 primary unless the state election law is changed to allow the names of presidential candidates on the ballot. Present law provides for only the slates of delegates supporting the various candidates to appear on the ballot; the names of the actual candidates are not to be found! For example, if you want to vote for Birch Bayh, you won't know whom to vote for unless you happen to know that his slate is headed by Jack Saurez.

If you agree that this is a ridiculous situation, and certainly not in the tradition of democratic voting procedures, please contact Assemblyman Lane and Senator Nolan, urging them to work for passage of A. 9368, and the companion bill in the Senate. This bill would add the name of the candidate to the delegates committed to him on the ballot. If this is not passed now, voting on April 6 will be a nightmare of confusion. There is also a petition to sign at the Bethlehem Library, calling for this change in the law.

Delmar Ann Brandon



SPOTLIGHT on community corner

WINTER CARNIVAL

Fun for everyone in the family at the Elm Ave. Park Saturday, starting at 12:30. Skating races, snow sculpture contest, cross country ski clinic, free snowmobile rides, costume contest, fife and drum corps, hot dogs and hot chocolate.

Community Corner, a public service column of important community events, is sponsored by



Member F.D.I.C.

Bethlehem's hometown Savings Bank
163 Delaware Avenue, Delmar
(Opposite Delaware Shopping Plaza)

if you rent-

an apartment or house, protect your clothes, furniture and other personal belongings with a low-cost State Farm Tenant Homeowners Policy. Let me give you all the details.



ED BERGMANN
50A Delaware Ave.
Delmar
482-8771

Like a good neighbor,
State Farm is there



STATE FARM FIRE
and Casualty Company
Home Office
Bloomington, Illinois

Come in and register

You may win a brand new 1976 RABBIT

NO PURCHASE REQUIRED

Buy a Rabbit before March 31, 1976
and it will come with a special
2 year/50,000-mile warranty



**Capital
Cities**



Imported Cars, Inc.

Rt. 9W,
Glenmont, N.Y.

463-3141

3 Miles South of Thruway Exit 23 on Rt. 9W
AUTHORIZED VOLKSWAGEN AND BMW DEALER
SALES — SERVICE — PARTS (formerly Capital VW)

TACO J's

"a leetle taste of Mexico"

HAPPY "TACO" HOURS

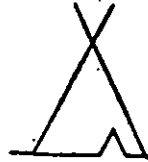
2-5 p.m. Tues., Wed., Thurs., Fri.
Buy 2 Tacos, Get 1 FREE
Offer good at both stores



577 New Scotland Ave. Albany
(Opp. St. Peter's Hosp. 438-7073)
Tues. Wed., Thurs. 11-8; Fri. Sat. 11-9
Sun. 3-8

'76 Shoppers World, Menands
465-7743
Thurs., Fri., Sat. 11:30-9:30
Sun. 11:30-6

BEAUTIFUL GIFTS FOR YOUR VALENTINE



Silver and Turquoise jewelry,
beadwork jewelry, pottery, rugs, books,
baskets, paintings, carvings, dolls.

American Indian Treasures

AUTHENTIC ARTS AND CRAFTS

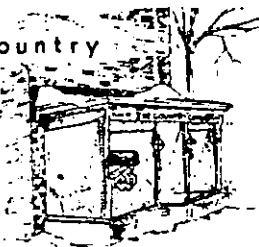
HOURS:
Tues.-Sat.
10 A.M.-5 P.M.
Thurs. 'til 9

2558 Western Ave. Rts. 20 & 146
Guilderland, N.Y. 12084

BankAmericard & Master Charge

THE UNIQUE
BOUTIQUE

Country
Corner



*Please
Be Our
Valentine!*

Gifts — Cards
Antiques

The Country Corner

Open Mon.-Sat. 10-5:30 • Thurs. 'til 9 P.M.
Telephone 439-6671 • 449 DELAWARE AVE., DELMAR
(Next door to Delmar Public Library)

TOLL GATE ICE CREAM & COFFEE SHOP

in Slingerlands

**ANNUAL VACATION
SUNDAY, FEBRUARY 8th
thru
SUNDAY, FEBRUARY 22nd**

**BACK FROM VACATION
MONDAY, FEBRUARY 23rd at 11:00 A.M.**

If I were Renting a
**STEAM
CARPET
CLEANER**

I'D CALL

HILCHIE'S
439-9943



Delmar, N.Y. 12054
Beth. Public Library
451 Delaware Ave.
7-6789-15