

The Spotlight

Controlled Circulation Publication

February 19, 1976
Vol. XXII, No. 8

20¢

Graphic newsweekly serving the towns of Bethlehem, New Scotland and nearby communities

School cutbacks a 'double wallop'

Page 7

Subdivision workload buries planners

Page 8



Pinnacle of scouting

Page 10

*New Eagle Scouts
Kip Robinson and
Brian Ellsworth
with a new friend*

If you want the Legislature to cut out the inequity in the banking laws that prevents you from having a checking account at your savings bank, cut out this ad. ✂

Tell your legislators you want them to act now to pass legislation allowing savings banks to offer checking accounts.

- It will lower the cost of such accounts.
- It will make banking more convenient and give you an economical choice of one-stop banking.
- It will enable senior citizens to have Social Security checks mailed directly to savings bank checking accounts.

We're working with other savings banks to urge this long overdue legislation but you, as a voter, have more influence.

Tell your legislator how **you** feel. Cut out this ad, sign it and mail it, or bring it to our office nearest you and we'll mail it for you.

We'll help.

Senator Howard C. Nolan, Jr.

Assemblyman Fred G. Field, Jr.

Assemblyman Thomas W. Brown

Legislative Office Building
Albany, New York 12224



**NATIONAL
SAVINGS BANK**

Member F.D.I.C

Albany • Delmar • Saratoga • Plattsburgh

Spotlight

is published every Thursday by Newsgraphics, Inc., 154 Delaware Ave., Delmar, N.Y. 12054. N.A. Boynton, editor-publisher. Controlled circulation, postage paid at Delmar, N.Y. News and ad copy deadline 4 p.m. Friday for following week's issue.

Spotlight CALENDAR

Tri-Village FISH — Call 439-3578 for voluntary service — 24 hours a day the year 'round — offered by residents of Delmar, Elsmere and Slingerlands to their neighbors in need of help in any emergency.

Bethlehem Jaycees meet first and third Wednesdays of the month, 8 P.m., Center Inn, 9W, Glenmont.

Welcome Wagon — Newcomers and mothers of new babies call 785-9640, Mon. thru Sat., 8:30 A.M., 6:00 p.m. so you may have a Welcome Wagon call.

Bethlehem Memorial Auxiliary to Post #3185, Veterans of Foreign Wars, meets the third Monday of every month, at the Post Rooms, 404 Delaware Ave., Delmar.

The Albany County Pistol Club, Winnie Place and Maewin Drive, Delmar, welcomes guests at its indoor pistol range every Tuesday at 8 p.m. Information: Dave Herbach, 439-4372 or Tom Corrigan, 439-3301.

Monarch Club of Albany meets every Tuesday night at the Center Inn, Glenmont, 6:00 P.M.

Onesquethaw O.E.S. meets on the first and third Wednesday of every month at the Masonic Temple in Delmar.

Glenmont Homemakers meet third Wednesday of month; Glenmont Comm. Church, 8 p.m.

Sports Car Club of America, first Wed. of each month 8:00 p.m. at the Center Inn, Glenmont, Marie Corrin, 869-6948.

Bethlehem Junior Woman's Club meets 2nd Wednesday of each month, 8 p.m., Bethlehem Public Library.

Rosary — St. Thomas Church, Adams Place, Delmar, every Thursday at 11:45 a.m.

Bethlehem Recycling Program (paper, cans, glass), Town Garage, 114 Adams St., Delmar. Mon. thru Fri., 8 a.m. - 4 p.m. Papers should be tied, cans flattened, bottles clean w/metal removed.

Empire Motor Sports Club, every Thursday at 8 at the Center Inn, Rt. 9W, Glenmont. Lee Beauregard — 456-0019.

Citizen Band Radio Club, first Thursday at 8 p.m. at the Center Inn, Rt. 9W, Glenmont. Danny Oat-hout, 463-0804.

Albany Ski Club, first & third Thursdays at 8 p.m. at the Center Inn, Rt. 9W, Glenmont. Joe Quillian, 274-1873.

HELP

US MOVE. WE STILL HAVE LOTS TO SELL. WE'RE MAKING FURTHER REDUCTIONS. WE WANT LESS TO MOVE. LIGHT ON US. LIGHTER ON YOUR POCKET-BOOK.

All Polyester Knits
Quiltings — Crepes —
Denims —
All Corduroys
Reduced Again To
\$1.50 yd.

All Woolens
Heavyweight Knits
Velveteens — Velours
Reduced Again To
\$2.50 yd.

Gingham — Batiste
Swiss — Flannel —
Poplin — Chiffon —
Organza
Reduced Again To
\$1.00 yd.

Assorted Fabrics
Seersuckers — Ducks
Poplins — Sailcloth
Hawaiian Prints
Reduced Again To
\$1.00 yd.

4 Ply Win-Knit
Now **\$1.10**
4 Ply Wool
Now **\$1.35**
2 & 3 Ply Sport
Now **75¢**
All Our Yarns
ON SALE

Notions — Buttons
Trimnings — Knitting
Needles — Macrame
Canvas and Supplies
Reduced
25% to 50%

Slipcovers — Custom Draperies
Woven Wood Shades
20% OFF

DELMAR DECORATORS

439-4130 — DELAWARE PLAZA, DELMAR
Daily 10-9 — Saturday 10-5:30

1st/day per person
CHILDREN FREE
Maximum 2nd/family

CROSS COUNTRY SKIING

INDIAN LADDER FARMS

2 mi. W. Voorheesville
on RT. 156

Skiing & Store Hours
9-5 Weekdays
10-5 Sundays

Phone 765-2956

- Several miles of trails
- Hot Cider & Doughnuts
at the Farm Store

Controlled atmosphere
MacIntosh now available

La Casa

Is Pleased To Announce
that a completely new
SALAD BAR
has been added to
compliment our fine cuisine. •

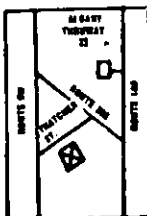
DON'T BE A WINTER SHUT-IN!

Take time to relax and enjoy dinner with some friends.
Every Fri. & Sat. dance to the music of the

Beverly Gage Trio Til 1 A.M.

You'll be delighted to find our food to be of
the best quality, and our atmosphere warm
and friendly.

LOUNGE OPEN TIL 1
LUNCHEON AND DINNERS TIL 10 P.M.
• **OPEN 7 DAYS A WEEK** •
THATCHER ST., SELKIRK 767-9045



Sausage \$1.50 lb.
Hickory Smoked Bacon
\$2.00 lb.
**WOODRIDGE FARM
MARKET 434-8903**

If I Were Renting a
**Carpet
Shampooer**
I'd go to

HILCHIE'S
235 Delaware Ave.

Bethlehem B.P.O.E. 2233, first and
third Wednesdays, 8 p.m. at the
Lodge in Cedar Hill, Rt. 144. Ladies'
Auxiliary second Wednesday.

Career Education Resource Center,
Bethlehem Senior High School,
every Wednesday, 7 to 9 p.m.

League of Women Voters, Thurs-
days, 9:30 a.m., once or twice a
month, at Bethlehem Public Li-
brary. Information, 767-2094.

Rotary Club of Delmar meets every
Tuesday night 6:15 at Schrafft's
Motel.

The Delmar Community Orchestra
rehearses every Monday evening
from 7:30-9:30 at the First United
Methodist Church of Delmar.

Gam-Anon, for wives of compulsive
gamblers, meets Wednesdays 8:15
p.m., St. Pius Church, Loudonville,
462-6916 or P.O. Box 23, Albany.

Historical films, Community Room,
Bethlehem Library, 12 noon, bring
lunch, free coffee.

**Paper Drive by Youth Groups of
Methodist and Reformed Churches**,
second Saturday of each month.
Bring papers to Town Parking Lot
next to Applebee Funeral Home, 10
a.m. to 2 p.m. Papers will be picked
up from the elderly or infirm if you
call either church office.

**Bethlehem Youth Employment Ser-
vice**, 114 Adams St., Delmar. School
year schedule, Monday-Friday, 1:00
-4:30 p.m. Telephone 439-2238.

Glenmont Lions Club meets 2nd
and 4th Tuesdays at LaCasa Res-
taurant, Selkirk, 6:30 p.m. Visitors
welcome. Info: Frank Muria,
767-2408.

Bethlehem Lions Club meets first
and third Wednesdays at LaCasa,
Selkirk, 6:30 p.m.

AARP meets 12:30 p.m., third Tues-
day of month, Delmar First United
Methodist Church, Kenwood Ave-
nue, Delmar.

Elsmere Fire Co., last Thursday of
each month, 8 p.m.

Bethlehem Lodge meets on first
and third Wednesday of every
month, Ladies Auxiliary meets on
second Wednesday of every month.

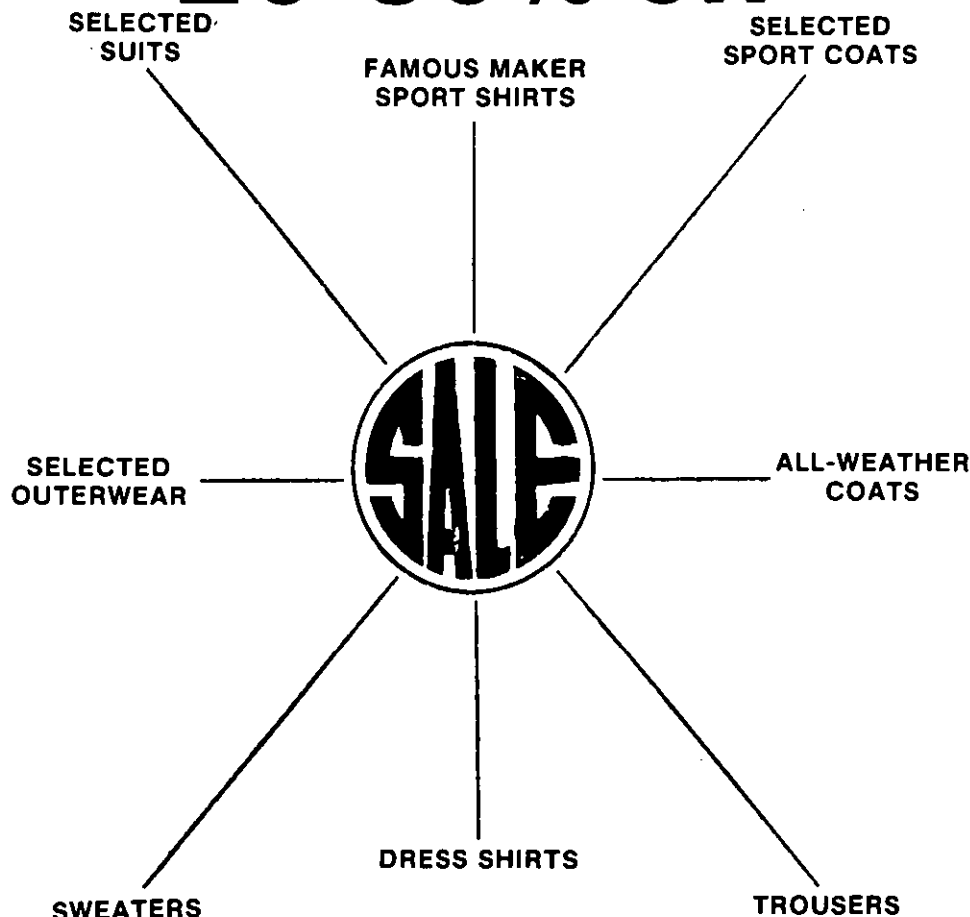
Citizen Band Radio Club first Thurs-
day. Third Tuesday at the Center
Inn, 8:00 p.m. Mrs. John Silivia.
463-7675.

Great Dane Club of Greater Albany
meets second Friday of the month,
8:00 p.m., Center Inn, Glenmont.
Guests are welcome. Info: call
785-7253.

**Nathaniel Adams Blanchard Post
#1040**, American Legion, meets first
and third Monday of month (when
holiday occurs, move to Tuesday)
except July and August. 8:30 p.m.

Bethlehem Jaycees meet 4th Mon-
day of each month, 7:30 p.m., Cen-
ter inn. Contact Denise Linstruth
439-5312 or Nevanne Merril at
439-6138.

FINAL CLEARANCE 20-50% off



Paul Mitchell's
MEN'S WEAR

DELAWARE PLAZA
ELSMERE, N.Y.

Phone 439-3218



Convenient
Layaway

Stulmaker's
Ltd.

for
quality
and
fashion in
men's wear

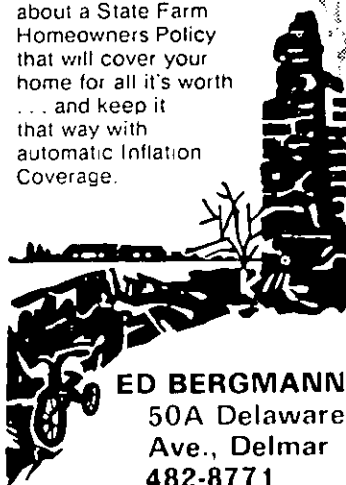
8 JAMES STREET, off State St.
ALBANY, NEW YORK

436-1142

BankAmericard Master Charge

Inflation hasn't changed the price of ashes.

But it has changed the price of your home. For example, if you bought a \$20,000 home in 1968—today it's worth about \$27,000. Don't be left with a costly pile of ashes. See me about a State Farm Homeowners Policy that will cover your home for all it's worth . . . and keep it that way with automatic inflation Coverage.



ED BERGMANN
50A Delaware
Ave., Delmar
482-8771



STATE FARM
Fire and Casualty Company
Home Office
Bloomington, Illinois

Kiwanis Club of Delmar meets every Monday night at 6:15 at The Center Inn, Route 9W, Glenmont.

THURSDAY, FEBRUARY 19

Vanguard-Albany Symphony preview for public, National Commercial Bank community room, Rts. 20 and 155, 10:30 a.m.

FRIDAY, FEBRUARY 20

Young Adult Film Series, "The Time Machine," Bethlehem Library, 3:30 p.m. for public, 7:30 p.m. for high school students only.

SATURDAY, FEBRUARY 21

Tri-Village Little League registration, St. Thomas School, 1-4 p.m. Bring birth certificate.

Lecture-demonstration on how to use plants effectively in your home, Garden Shoppe, Feura Bush Rd., Glenmont and Carman Rd., Guild-erland, free, 11 a.m.

SUNDAY, FEBRUARY 22

Film, "Ride the High Country," a Western, Bethlehem Library, 2 p.m.

MONDAY, FEBRUARY 23

Recital, benefit Hadassah Israel Education Services, Dr. Lynn Tolkoff, pianist, and Irvin Gilman, flutist, of SUNYA Music Dept., Bethlehem Library Community Room, 8 p.m. Tickets, call Mrs. Alexander Rothschild, 439-3107, or Mrs. Emil Woldar, 439-5335.

Pre-school story hour, Bethlehem Library, 10 and 11 a.m.

TUESDAY, FEBRUARY 24

Delmar Progress Club, Literature Group buffet, Schrafft's Motor Inn, 12 noon. For reservations call Mrs. R. Darrow, Legislative Forum, Chancellor's Hall, speaker Dr. Vivienne Anderson, State Education Dept., 10:30 a.m.

Delmar Camera Club, St. Stephen's Parish Hall, Elsmere, double program, "Enlargers," by Alan French, 7:30 p.m., "Photo Journalism," Julian Belin, 8 p.m.

Kindergarten Story Hour, 2 p.m. and First and Second Grade Story Hour, 4 p.m., Bethlehem Library.

WEDNESDAY, FEBRUARY 25

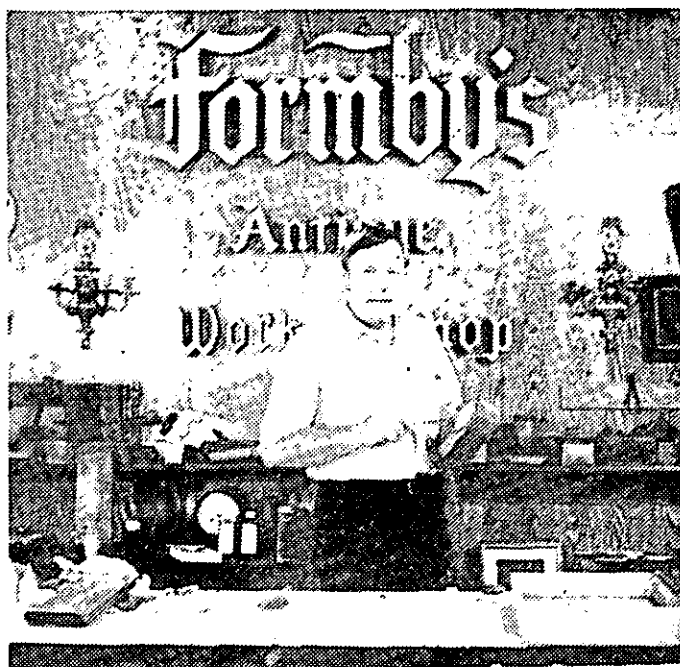
Cooperative Extension Home Greenhouse Gardening Series, Extension office, Voorheesville, 7:30 p.m. Register by phone 9 a.m.-12 noon, fee \$1 at door.

THURSDAY, FEBRUARY 26

Blood bank, sponsored by Bethlehem Central Teachers' Assn., BCHS girls' gym, 11 a.m.-5 p.m.

TUESDAY, MARCH 2

Public hearing, Bethlehem Planning Board, on the application of Abco Builders, Inc., for a proposed subdivision of 151 building lots located between Beacon and Feura Bush Rds., and immediately west of and abutting Calvary Cemetery, Glenmont, town hall, 7:30 p.m.



HILCHIE'S HARDWARE INVITES YOU TO

LEARN THE SECRETS

of proper care and repair of your furniture

FROM

HOMER FORMBY'S NEW TELEVISION SERIES

Homer Formby is a 3rd generation Master of antique restoration. Beginning in his father's workshop he literally grew up with the beautiful and exotic woods used in the manufacture of fine furniture. His family's expertise had been founded on the old tried and true methods that involved a great deal of hard work and patience. With the exuberance of youth Homer Formby began experimenting with various formulas and methods to simplify and make the care and repair of fine furniture an easier task. Over a career spanning three decades Mr. Formby's ambitions have been realized. The Formby method is now standard practice and is taught by Universities, home economists, and furniture repair experts throughout the nation.

Tune in to Mr. Formby's all new half hour television series as he clearly demonstrates the natural Formby techniques. Learn how you can easily refinish furniture, remove water rings, cigarette burns and built up layers of wax. You'll see how the masters of antique restoration hand rub a finish, repair cracks and holes, repair loose or missing pieces of veneer, clean silver and brass, clamp and glue woods, repair picture frames, and many, many other tips to simplify the restoration and preservation of your beautiful furniture. Because of the acute scarcity of fine woods much of today's fine furniture is irreplaceable . . . Mr. Formby's new television series is a must for lovers of elegant furniture.

MR. FORMBY'S NEW SERIES WILL BE SEEN
Sun., Feb. 22nd 11:30 a.m.
CHANNEL 13

FORD WHEELS— ORANGE DEALS

| | |
|--|--------|
| '74 Maverick 6 cyl., auto., blue | \$2895 |
| '72 Mustang Spt. roof, V8, auto., P.S., red | \$2795 |
| '72 LTD 4 dr., V8, auto., vin. roof, 39,000 miles | \$2495 |
| '73 Mercury Capri 4 spd., 4 cyl., red | \$2595 |
| '74 Vega Hatchback automatic | \$2495 |
| '74 Plymouth Duster 6 cyl., auto., P.S. | \$2695 |
| '74 Squire Wagon, air conditioning | \$3695 |
| '75 Plym. Fury III, 2 dr., auto., V8, P.S. P.B. | \$3595 |
| '74 Chev. Impala Wagon, 6 passenger | \$3295 |
| '74 LTD 2 dr. hdt., red, white vin. roof | \$3295 |
| '74 Torino 2 dr., hdt., 8 cyl., auto., air | \$2695 |
| '75 Maverick 2 dr., 6 cyl., auto., P.S. 7000 miles | \$3195 |
| '71 Maverick 2 dr., 6 cyl., auto., blue | \$1995 |
| '75 Torino Squire Wagon, air cond., brown | \$4195 |
| '72 Ford Wagon, auto., V8, P.S., P.B. Blue | \$2195 |
| '74 Pinto Runabout 4 spd., 4 cyl., 28,000 miles | \$2395 |
| '76 Pinto Runabout 4 spd., 4 cyl., 7000 miles | \$3195 |
| '72 Chev. Nova, 2 dr., V8, auto., P.S. | \$2295 |
| '71 Torino Spt. roof, V8, auto., P.S., blue | \$1995 |
| '72 Plym. Satellite, 4 dr., V8, auto., P.S. | \$2195 |
| '71 Chev. Malibu 4 dr., auto., V8, P.S. 31,000 miles | \$1995 |
| '69 FORD LTD 4 dr., 8 cyl., auto., P.S. | \$1395 |
| '69 Chev. Nova 4 dr., V8, auto., P.S., air | \$1295 |
| '72 Ford Gal. 500, 4 dr., V8, auto., P.S. | \$2295 |
| '70 Ford C Sedan Wagon | \$1695 |
| '74 F 100 Ranger std., V8, P.S. | \$3295 |
| '72 E100 Van 6 cyl., std., as is | \$1495 |
| '71 F350 C & C, 8 cyl., 4 spd. | \$1675 |
| '75 F100 Pickup. 8 cyl., auto. | \$3295 |
| '74 F100 6 cyl., auto., 16,000 miles | \$3295 |

Our 60th Year 489-5414

What Color Orange Ford Do You Want?

ORANGEMOTORS

799 Central Avenue, Albany

The Spotlight

Controlled Circulation Publication

February 19, 1976
Vol. XXII, No. 8

Graphic newsweekly serving the towns of Bethlehem, New Scotland and nearby communities

BOARD OF EDUCATION

State dealing schools a double cutback

A dollar breakdown in the state's proposed reductions in financial aid to education for local school districts has caused few surprises. The district-by-district figures, released unexpectedly last week, underscored the bad news facing local property owners next October, a substantial boost in district school taxes.

In the eyes of Bethlehem Superintendent Lawrence A. Zinn, any cutback in state aid represents a double wallop for property owners' wallets. "They (the state) are talking about a cut in state aid to localities when there should be an increase," he declared. "We have to work the additional cost of the new teachers' contract into our budget, plus the

inflation factor in operating expenses, on top of compensating for the cut. The increase in the property tax base will help some, but not nearly enough."

Teacher raise signed

The board of education earlier this month signed a new contract with the Bethlehem Teachers Assn. calling for salary raises totalling more than a quarter million dollars. The formula also calls for built-in increments next year.

When the state figures came out last week, they surfaced first in an Albany newspaper with no hint of the source. State Education Dept. spokesmen denied responsibility for the figures, pointing to the

State Division of the Budget. Subsequently it turned out the numbers started with Assemblyman Perry M. Duryea's staff in the office of the Assembly's minority leader.

Based on estimates

The figures detailing the amount of reduction for each district are based on sliding scale percentages of preliminary estimates drawn up by the Assembly Republican staff for inclusion in the Legislature's budget bills. The deadline for bills needed to implement Governor Carey's recommended budget is this week. The bills will be in the hopper any day now, climaxing Phase One of a series of briefings between

legislative staff people and the governor's budget aides.

A State Education Dept. aide said school transportation aid has been cut from 90 percent to 85 percent of approved expenses under the new formula.

The cutbacks, part of a statewide reduction of more than \$5 million in school aid, include \$118,346 for the Bethlehem Central district and \$48,248 for the Voorheesville district.

Werner Berglas, supervising principal for the Voorheesville system, said the figure was within the district's own estimates, which were reported in the Spotlight earlier this year.

In Bethlehem, Zinn said the reduction translates to approximately \$3 per \$1,000 assessed valuation in the tax rate for Bethlehem property owners.

School budgets, due to go to the voters in June, may have last-minute adjustments this year. Governor Carey's budget faces a long harangue in the Legislature, and the figures disclosed last week are certain to be altered considerably before the final countdown.

Delmar parents study strategy

Disappointed parents and PTA members are evaluating alternate strategies in a continuing campaign to block the closing of the Delmar Elementary School in September. Several dozen persons attended an open meeting at the school

P-2 and Alice are OK, but not Hagar, Goober

Here, Zeke . . . Hagar, where are you? Cuddles . . . Goober, tell your owners it's past time for your license renewals.

Town of Bethlehem dog owners who have not purchased 1976 licenses for their dogs should come to the town hall, 393 Delaware Ave. any time between 8:30 a.m. and 4:30 p.m., Monday through Friday to do so. To obtain dog licenses by mail, residents should send a check for the appropriate fee, made out to the Town Clerk, plus a self-addressed, stamped envelope to the town clerk's office at town hall.

License fees are \$2.35 for

each male or spayed female dog, \$5.35 for each unspayed female dog. Veterinary certificates or affidavits are required for spayed female dogs unless such certification is already on file with the town clerk.

The town clerk is sending final notices to delinquent dog owners in the Town of Bethlehem. The notice states that the dog owner must obtain a license for the pet or a summons will be issued for a court appearance. A \$10 penalty plus court fees will be imposed on dog owners who ignore the final notice and must be served a summons.

Delinquencies are determined from a dog census list, which was compiled last October. Individuals who were dog owners at the time of the census but who no longer own dogs should advise the Town Clerk. The final notice form now being sent out includes an affidavit of non-liability, which can be completed and returned to the town clerk's office.

More than 2,400 of the town's 3000 dogs were licensed by February 4, leaving 600 delinquent. But don't worry, Muttley, Yogi Bear, Mud, P-2, Alice and Chicago Lady . . . your owners have already renewed your licenses.

last Thursday to hear suggestions and ideas on future steps.

Donald Lindell, president of the school PTA, said the suggestions were "quite mixed." They varied from taking legal action to various possible means of persuading the board of education to reverse its Feb. 4 decision and such alternatives as organizing a private school for children affected by the realignment of elementary school zones next September.

The Delmar School PTA's executive committee, meeting privately after the public session, rejected the private school alternative as lacking sufficient support. The Bethlehem board of education two weeks ago climaxed more than a year of deliberation on the issue by voting to close the school in September on the basis of declining enrollment projections.

District officials currently are working on a plan for the redistribution of the school's 252 pupils into three or possibly four of the district's five remaining elementary schools.

GLENMONT

A letter from Bess



Teresa Rose Lawlor

The assignment for social studies in the fifth grade at Glenmont School was: write a report on a famous American. Terry Lawlor discussed the

project with her parents and picked former President Truman. The next day she wrote a letter to Mrs. Truman, along with a letter to the chamber of commerce in the Trumans' home town, Independence, Kan., for material on the late president.

"Because I am only 10," Terry wrote, "I cannot remember your husband when he was president. My father says that when history has time to evaluate everything that President Truman will be considered as one of the greatest presidents the United States or the world has known. Being his wife you should know that already . . . It is not often a person is able to write to someone who knew a president as closely as you did. My friends all have to depend on what history books have to say about the people they chose

because it was such a long time ago when they lived . . . I wish your husband had lived to enjoy the Bicentennial year. He helped so much in keeping our country safe so that all Americans could live to enjoy its 200th birthday. Goodbye for now and good health and happiness. Yours truly, Teresa Rose Lawlor."

The former First Lady's reply, signed on her own personal stationery and typed by her secretary, said:

"Dear Teresa: What a nice note! I enjoyed your letter so very much and I appreciate the effort and trouble you took to write me. I am glad you chose to write about my husband for your class report and I hope you receive a good grade on it. With best wishes for a long and happy life, Sincerely, Bess W. Truman."

Terry is the daughter of Mr. and Mrs. Daniel C. Lawlor, 396 Elm Ave., Glenmont.

**Spotlight Classifieds
bring quick results**

Planning board workload mounts

A flurry of activity by land developers and steps toward creating a new zoning classification has piled an unprecedented workload on Bethlehem's planning board. The seven-member panel is directly involved in two public hearings in March and indirectly in a third, which will add to the already sizeable stack of paperwork on hand.

Within the past week these actions have added to the board's agenda:

- The board will hold a public hearing March 2 on the pre-

liminary plan filed by Abco Builders, Inc. for the 151-unit Bicentennial Woods subdivision between Feura Bush Rd. and Beacon Rd. in Feura Bush.

- The board has set March 16 for a hearing on preliminary plans for seven industrial or warehouse sites on Rt. 9W in Glenmont.

- The Bethlehem town board, acting on recommendations submitted by the planning board, has scheduled a public hearing March 10 on a proposal to add a new classification, Residential AAA, to the town zoning ordinance.

- Alpha Collateral Ltd. has resubmitted a proposal for a

Come in and register

**You may win
a brand new
1976 RABBIT**

NO PURCHASE REQUIRED

Buy a Rabbit before March 31, 1976

**and it will come with a special
2 year/50,000-mile warranty**



**Capital
Cities**



Imported Cars, Inc.

Rt. 9W,
Glenmont, N.Y.

463-3141

3 Miles South of Thruway Exit 23 on Rt. 9W

AUTHORIZED VOLKSWAGEN AND BMW DEALER
SALES — SERVICE — PARTS (formerly Capital VW)
under new ownership

Tools'

RESTAURANT

283 Delaware Ave.
Delmar, N.Y. 439-9111

**Effective FEBRUARY 1st
OPEN SUNDAYS**

8 A.M. to 8 P.M.

Breakfast till 12:30 P.M.—Lunch & Dinner till 8 P.M.
ATTRACTIVE FAMILY PRICES

32-lot residential subdivision on a 15-acre tract off Rockefeller Rd., Elsmere. The project's original plans were approved by the board in 1974, but the developers failed to begin construction before the approval period expired.

• Two new proposals for apartments for a 5-1/2-acre tract at Kenwood Ave. and Cherry Ave. were submitted by Equinox Construction Corp. A previous proposal for a 48-unit apartment was rejected by the board last year. The new plan calls for four-unit buildings.

Brookfield decision due

Meanwhile the Brookfield bugaboo still haunts the board, but probably not for long. Deadline for board action on the Biatess Corp. plan for the controversial 131-site single-family subdivision west of Brockley Dr. in Delmar is March 12, but board chairman William R. Weber has indicated the decision will be coming this week or next. The

hangup here is primarily traffic and safety factors, the crux of most of the opposition mounted by a determined league of homeowners in the Brockley Dr. neighborhood.

The Glenmont industrial project, called Gould Park, is in an area already zoned for light industry such as warehouse operations. Plans call for seven sites, ranging in size from 40,000 to 50,000 square feet on nine acres east of Rt. 9W just south of Asprion Rd.

The triple-A zoning category would specify a minimum lot size of just under half an acre. The recommendation is in response to residents' complaints about the density factor caused by proposed new subdivisions, but both Supervisor Harry H. Sheaffer and Weber reiterated the town has not determined where or when to apply such a classification if approved.

A holiday is a holiday is a holiday is a . . .

When the U.S. Congress enacted legislation making national holidays legal, it eliminated the confusion of mixed observances of the two presidential birthdays recognized by holiday-makers over the years — Washington and Lincoln. Thus the third Monday in February has been designated Presidents Day, a legal federal holiday.

But some traditions go down hard. Schools and businesses have never observed either Lincoln's or Washington's birthdays as holidays, although a few have given one or the other to make a long weekend. Yet some institutions persist in keeping the confusion alive. Among them: New York State and the towns of Bethlehem and New Scotland. All three seized the chance to shut down last Thursday on an obsolete holiday.

Most citizens took it for granted that state offices, which close when it's too cold, too hot, too windy or too snowy and observe every com-



Miss America (Tawny Godin), center, was at VA Hospital last week as part of the observance of the Heart Fund campaign. With her, from left, are Peter Emma, musician provided by American Federation of Musicians, Kitty Jones of Delmar, student volunteer from Bethlehem Central, Joseph Cozz, patient, Lois Bodian of Delmar, student volunteer from Bethlehem Central, and Chester Nicponski, open heart surgery patient and volunteer.

C.B. CLARKE, INC. FOR INSURANCE CALL



Burt Anthony

Do you know what limit you have on your Homeowner Policy for Public Liability? It is only \$4.00 more for \$100,000!

Call us for a review.

439-9958



339 Delaware Ave.
Delmar

GIANT HOUSE PLANT SALE!

- We Need The Room
Spring is Coming . . .
 - 2 Greenhouses — Packed Full!
- ALL PLANTS ON SALE . . .



20-50% OFF

OFFER GOOD TILL FEBRUARY 29, 1976

OPEN SUNDAY

3699 Albany-Carman Rd., Guilderland 356-0442
Feura Bush Rd. Glenmont 439-1835



OPEN DAILY 9-5; SUNDAY 10-4
CLOSED MONDAY

memorative except Arbor Day and St. Swithin's Day, would be closed on Feb. 12, a normal business day for everyone else except bankers. "I'd forgotten about Feb. 12," said one taxpayer, "and when I found the office closed I figured it was because Valentine's Day fell on Saturday this year."

Because town boards in Bethlehem and New Scotland

set holiday policies for their respective institutions, the confusion — and extra day off — is destined to continue in future years despite Congressional standardization efforts. Of municipalities in Albany County, Colonie was the only other town to take Thursday off as well as Monday. Open for regular business on Feb. 12 were the town offices in Guilderland

and Westerlo, city and county offices in Albany and the village office in Voorheesville.

Explained Bethlehem Supervisor Harry Sheaffer: "We've closed the town hall on Lincoln's Birthday for as long as I can remember. There are 10 legal holidays listed on the town calendar. It's unusual to have two so close together."

New church officers

Recently elected as officers of First Church of Christ, Scientist, Delmar, are Mrs. Rosalind Becker of North Chatham, chairman of the board of trus-

tees, and Mrs. Mildred Frisbie of South Bethlehem, vice-chairman. Mrs. Louise West of Glenmont has been appointed clerk and Frederick Memmott of Berne treasurer.

Also elected to the board of trustees for a three-year term is Mrs. Sally Weinstein of Delmar. Mrs. Joan Travis of Glenmont is Sunday School superintendent, having been re-elected for a second three-year term.

Currently serving as readers at the church are Mrs. Martha Memmott of Berne and Mrs. Helen B. Coughtry of Delmar.

Sam's Restaurant

SPECIALS THRU FEBRUARY 22

Spaghetti with lobster, shrimp, and crabmeat fra diavolo **\$5.95**

Veal Parmigiana
Veal Scallopini
Veal & Peppers **\$4.85**

INCLUDES: Salad bar, spaghetti or veg. & potato
Complete Italian menu served 11:30 a.m. to 12:30 a.m.
125 SOUTHERN BOULEVARD, ALBANY
Closed Tuesday — 463-3433

COVER PHOTO

Congressman Sam Stratton congratulates Delmar Troop 75's new Eagle Scouts, Kip Robinson, son of Mr. and Mrs. David H. Robinson, and Brian Ellsworth, son of Mr. and Mrs. Stephen Ellsworth.

Photo by Scout Bruce Fleahman



Sweaters & Cardigans
1/2 PRICE

2nd Anniversary Sale

at **Ari Andretti Ltd.**

Selected Pants, Regularly \$16 to \$26
NOW 1/2 PRICE

Outerwear, Leisure Suits and
Selected Leather Pieces **1/2 PRICE**

ENTIRE STOCK OF SUITS AND SPORTCOATS
Buy one Suit or Sportcoat at our regular price
and receive the second at 1/2 PRICE

Westgate Shopping Ctr.
Albany, New York
482-777

FREE ALTERATION

Twenty Mall
Guilderland, New York
456-3432

Master Charge

Ari Andretti Ltd.

BankAmericard





Life Art photo

Roger Smith, right, looks over flooring material with Richard Law III at his new store in Elsmere, which opened officially this week at 278 Delaware Ave.

A grand opening for Roger Smith

Roger Smith Paint & Wallpaper Co. Inc. is celebrating a "grand opening" in its third location in six years, this time

in spacious new quarters at 278 Delaware Ave., Elsmere.

Roger Smith established the business in May, 1970, in the small building in the rear of the L. J. Mullen Pharmacy, and moved to 253 Delaware Ave.

continued on p. 14

The Whole Town's Talking About

Delmar's Newest One-Stop Laundromat & Dry Cleaning Facility

Featuring

- Absolutely **Spotless** and Excitingly Decorative Facility
- **Convenient** to all Shopping
- Plenty of **Soft Hot Water**
- **Large Capacity** Washers and Dryers
- Attendant **Always** on Hand
- **Savings** on bulk dry cleaning in our "Finespin" area
- Complete **Vending Area**

OPEN 8-10 7 DAYS A WEEK!

**FABRIC CARE CENTER
WASH & DRY CLEAN**

Delaware Plaza, Delmar

Virginia Lynch

is having a

50% off SALE

of her

finest feminine fashions

Dresses, Coats, Suits, Sportswear,
Accessories & Lingerie



230 Delaware Ave.
Delmar
439-9005
Thurs. 'til 8



40 Maiden Lane
Downtown Albany
434-2013

Draperies by mayfair

made-to-measure or custom coordinated for your home by the drapery consultant.

Come in or call for an in-home appointment.

...458-7080 **mayfair**

Open daily 10-9; Saturday 10-5.

FRESH GROUND HAMBURGER

For your table or freezer
99¢ lb.

We can fill any order!
We deliver!

WOODRIDGE FARMS
434-8903

Stewart's
RECORD-BREAKING
ICE CREAM
SALE
22
ALL NATURAL
FLAVORS
99¢
HALF-GALLON

MONDAY,
FEBRUARY 16
THROUGH
SUNDAY,
FEBRUARY 22

vanilla
chocolate
vanilla-chocolate



Doctors donate blood whenever they can. Among them: Dr. Sidney Mauer of Delmar, supervisory chemist at the VA Hospital, left and Dr. Samuel Ciccio of Delmar, VA chief of staff. Looking on are Dr. William Nelson III of Slingerlands, VA chief of ambulatory medicine, Mrs. Zuera Young of Delmar and Red Cross Nurse Nancy Godio of Saratoga Springs.

Leak repaired in sewer pipe

A small leak in a six-inch feeder pipe in the original sewer system in Elsmere resulted last week in petroleum fumes in the Mason Rd.-Delaware Ave. section and the removal of 22,000 gallons of gasoline from an Elsmere service station.

The search for the source of fumes started after the Bethlehem Sewer District had received several complaints from residents in the area. The problem was traced to the Hess station on Delaware Ave., where two pumpers from the Elsmere Fire Co. and a foam truck from the Selkirk Fire Dept. began flushing lines.

"The Hess people were extremely cooperative," said Morwyn K. Atwood, adminis-

sations will be held in the Delmar Presbyterian Church on Thursdays from 9:30 to 11 a.m. starting March 11. Classes will be taught by clergy from Delmar Presbyterian, St. Thomas Roman Catholic, Delmar Methodist, Bethlehem Lutheran, Bethlehem Reformed and Delmar Baptist Church. The public is invited.

DiNAPOLI & DiNAPOLI

New York State



Guild Opticians



Delmar Hours: Tues., Wed., Thurs., Fri. 1:30-5:30
Wed. Eve. 7-9 by appointment only
Sat. 9-2; Closed Monday

**282 Delaware Ave.
Delmar 439-6309**

**457 Madison Ave.
Albany 449-3200**

Ted Burke says . . .

Let's talk!

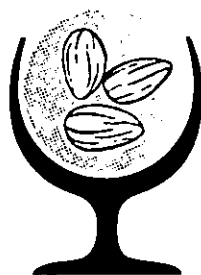
. . . about how we can help you.
Whatever your problem.

Saving. Checking. Estate
planning. A loan. We can
probably help. Call me.

Telephone 439-4934



LEMON SHERBERT
RASPBERRY SHERBERT
ORANGE SHERBERT
LIME SHERBERT
PINEAPPLE SHERBERT



Stewart's
ICE CREAM SHOPS

Stewart's
BREAD 'N BUTTER SHOPS

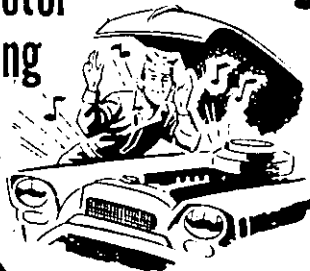
Stewart's
SOUP 'N SANDWICH SHOPS

FARMER
in the **DELL**
Dairy Drive-Ins

"Discipleship" will be the theme for a series of Bible studies sponsored by Tri-Village churches during Lent. Six

[illegible]

**We'll make your
motor
sing**



- Engine Tune-up
- Front End Alignment
- Automatic, Transmission Service
- Modern Equipment
- Skilled Mechanics

BAILEY'S GARAGE

Phone Delmar 439-1446
Oakwood Road, Elsmere

**Permit has been applied
for Econ. Law 27A23 to
mine Topsoil-Sand by
R.J. Hillmann, Lasher
Rd., Selkirk, N.Y. 12158**

If I were Renting a

SUMP PUMP

I'd go to

HILCHIE'S

235 Delaware Ave.

three months later. In the five years since, he has attracted a sizeable following of regular customers for his paint, wallpaper and floor covering business including the Armstrong line. The firm also specializes in glass and screen repair.

Feature of the week-long opening this week, in addition to coffee and refreshments, is a drawing for 12 square yards of new floor covering to be given to a lucky winner. Coupons for the drawing have been appearing in Spotlight ads.

In addition, paint, wallpaper and flooring representatives are available at the store at various times during the week. Flooring reps will be on hand most of Friday and Saturday. Over the next several weeks Roger will sponsor wallpaper seminars and flooring seminars for do-it-yourself applications.

Society to decorate

Did you ever try to decorate a cake? You can give it a try Monday evening, Feb. 23, at 8 p.m. at St. Matthews Church, Voorheesville, under the guiding hand of the Altar Rosary Society.

Italian food demonstration

A free Italian food demonstration will be held Sunday from 1 to 6 p.m. by the Italian-American Culture Foundation of the Capital District, Inc. at the Italian American Community Center, Washington Ave. Extension, Albany.

The public is invited to the free exhibit of Italian sausage making, ravioli preparation, Italian wines displayed and Italian cook books.

Plumbing repairs class

The Home Economics Division of Albany County Cooperative Extension will conduct a class on simple plumbing repairs on Thursday evening, Feb. 26, 1976 from 7:30-9:30 p.m. at the Albany County Resources Development Center, Voorheesville. There is no registration fee but pre-registration is required. Call 765-2874 for information.

During the Bicentennial Year

SCHRAFFT'S Albany Motor Inn's SIDEWHEELER RESTAURANT

Route 9W, Glenmont, New York 462-2962

• FRIDAY SPECIAL —

Delicious FRIED HADDOCK DINNER

3⁷⁶

• SATURDAY — "The Spirit of '76 Smorgasbord"

Enjoy Delicious carved Beef, Ham, Lobster, Shrimp, Seafood Newburg, Assorted Potatoes, Vegetables, Salads. Dessert and Beverages.

•FREE Glass of Burgundy

7⁷⁶

PERSON

Strolling Accordion Player Sat. Night JOE DiLORENZO

• SUNDAY BRUNCH Served 11 AM-2 PM

Enjoy a Delicious BUFFET BRUNCH
And a Relaxing Sunday.

3⁷⁶

Daily Dining Mon. thru Sat. 6:30 AM to 3 PM
And 5 PM to 9:30 PM

Sunday 6:30 AM-2 PM, 3 PM to 9:30 PM

Sidewheeler Lounge,

HAPPY HOUR ...

Mon. thru Fri. 4:30-6:30 PM

PRESIDENTIAL MANHATTAN **76^c**

FREE Hot & Cold Hors d'oeuvres

•LIVE ENTERTAINMENT

• TIME •

WED.-SAT. 9 P.M.-1 A.M.

• Banquet & Meeting Rooms
Available



NORTHEAST INSTITUTE OF GYMNASTICS

1328 CENTRAL AVENUE, ALBANY, N.Y.

Classes in Four Olympic Events — Balance Beam,
Floor Exercise, Vaulting and Uneven Bars

For girls 7 years and up. Tiny Tots Program for 3½ to 6 years.

Scaled to their ability in tumbling and beam.

Member: U.S. Gymnastics Federation, Qualified Coaching Staff of State,
Regional & National Level Champions.

LIMITED ENROLLMENT

CALL 459-4547

**Beautiful
Party Cakes
by FAITH REED
439-5640**

*Tastes as good
as they look!*

**Tennis Rackets
Restrung — Regripped
Violins Repaired
Bows Reaired
C. M. LACY**

3 Becker Terrace — 439-9739

**For a once in a lifetime
occasion, don't take chances
— call a professional to
photograph
your wedding**

**RICCARDO
STUDIOS**

Maple Ave.
Selkirk

767-9891



Photography is our only business

Little League registration set

Tri-Village Little League will begin its 24th year of operation on May 8. It has grown from three teams in 1953 to its present setup of three 12-team divisions registering some 500 youths between the ages of 8 and 12.

The upcoming season will run from May 8 to July 31, and will see each team play 16 games. Any child in the Tri-Village area is eligible to participate providing that he or she will be 8 years old on or before July 31, 1976, or will not be 13 by that date.

All 8-year-olds start in the Junior League, where they are assigned to teams consisting of members of the same neighborhood wherever possible. This arrangement makes it possible to construct car pools to and from games and practice sessions.

Everyone plays

All who enter Little League are entitled to participate in every game. In each six-inning game a manager must give each player at least three innings in the field as well as one time at bat. In the Junior and Intermediate leagues, all players on hand for the start of the game are placed in the batting line-up so that they get an equal chance of batting whether or not they play in the field.

Registration for the upcoming season will be at St. Thomas School on Feb. 21 and 28 from 1 p.m. to 4 p.m. Those registering for the first time must present a birth cer-

**O'SHEA
Getty
STATION**

4 Corners, Delmar

**LUBE SERVICE AND
COMPLETE MECHANICAL
REPAIRS**

Open 7 days, 7 a.m.-9 p.m.
— 439-9808 —



KLERSY REALTY, INC.

282 Delaware Ave.
439-7601

For **ALL** your **REAL ESTATE** needs including
relocating you anyplace in the U.S. and Canada.

**PERSONAL, PROMPT,
PROFESSIONAL SERVICE**

THE PAPER MILL
DELAWARE PLAZA

We can fill orders promptly for —

- Rubber Stamps • Letterheads
- Business Cards • Stationery
- Wedding Invitations • Bar Mitzvahs

Catalogs Available:

Regency
Gibson

Coronet
Chase

Eaton

"Come in and Mill Around"

Be creative
be correct ...
**COLOR STYLE
YOUR HOME**
with
**PRATT & LAMBERT
PAINTS**



in exclusive Calibrated Colors

Ed Dillon

EMPIRE PAINT COMPANY

142 Central Avenue
Albany, New York 12206
Phone: 449-5400

**Wallpaper
Sale — —
FEB. 2-28
UP TO
50% OFF!**

ROGER SMITH

**Paint, Wallpaper
and Floor Covering**

278 Delaware Ave.
439-4468

*"Over 45 years experience
means
dependable service & installations"*



Heating Service

**Fuel Oil • Kerosene • Gasoline
• Oil & Natural Gas Burner Service •
COMPLETE INSTALLATION OF:**

... Heating Systems
... Air Conditioning
... Humidifiers

... Air Cleaners

— 24 HOUR EMERGENCY SERVICE —

Radio Equipped Trucks

318 Delaware Ave., Delmar •439-7605

DO YOUR HOME WORK NOW.

Save on off-season contractor's rates. With a 10/10 Home Repair Loan, borrow up to \$10,000 and take 10 years to repay.

HOME SAVINGS BANK

Home Savings Bank of Upstate New York

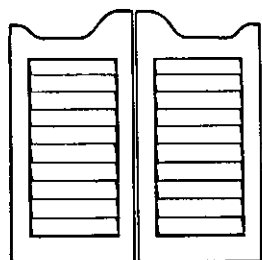
Member FDIC



Albany/Colonie/Guilderland/Troy
Fort Edward/Greenwich/Hoosick Falls/Hudson

SPECIAL! LOUVERED CAFE & SALOON DOORS SPECIAL!

2'-6" x 3'-1" **\$24⁹⁵**
2'-8" x 3'-1"
3'-0" x 3'-1" (HARDWARE INCLUDED)



Karl A. Paulsen & Sons

Millwork & Lumber, Inc.

54 Railroad Ave., Albany, N.Y. 12205 — 438-6811

tificate. All entrants registering for the Junior League should indicate the school they attend, for this will help in the assigning of teams geographically. There is a registration fee of \$10 for the first child in a family and \$3 for each additional member. This is the only charge during the season, as all equipment aside from gloves and shoes are provided by the league.

Tryouts in April

Tryout dates will be April 10, 17 and 24. The third tryout is a conditional date, depending on the weather of the previous ones. All players who wish to try out for the Intermediate or Major leagues must attend two of the dates. Managers will notify players who have been selected in these leagues by phone, and will set up practice sessions.

Little League needs parental participation, and any volunteers who wish to hold positions of manager, coach or just to help are asked to call Larry Woodside at 439-4261 or Henry Radszynski at 439-9216.

Town officials fight cutbacks

Supervisors of eight of Albany County's 10 towns have filed a formal protest with Gov. Hugh L. Carey and legislative leaders on cutbacks in state financial aid to municipalities projected by Carey's recommended "austerity" budget for the next fiscal year.

The resolution came from a meeting of town supervisors called by Supervisor Stephen Wallace of New Scotland at the New Scotland town hall last week. "We feel town governments have done their share of belt-tightening," Wallace said. "We think the cities can do more than they have done to eliminate extravagance. We are opposed to state budget cuts because of their negative effect on local governments and schools."

At the meeting were Supervisors Harry H. Sheaffer of

Bethlehem, Carl Walters of Guilderland, William Mann of Berne, Wayne Peters of Rensselaerville, Edward Haverly of Westerlo and Michael Hammond of Knox. An eighth supervisor, John Biscione of Coeymans, sent a letter endorsing the stand.



Traditional
MEN'S WEAR
92 STATE ST., ALBANY

Sherman's
OF STATE STREET
Home of 3 button clothing

Button down shirts,
narrow ties

AMERICAN EXPRESS
BANK AMERICARD
MASTER CHARGE

434-1898
PARK 'N SHOP

Young adult estate plan

If you're 15 to 22 years old, you can start your life insurance program with \$10,000 in term insurance for just \$49.00 a year! When you're 25, your policy converts to permanent insurance at rates you'll be able to afford. It's called Nationwide's "Young Adult Estate Plan", and it's worth checking into. Call:

TED WERE

Local Representative

465-8937

OFFICE —

416 Delaware Ave.
Albany, N.Y.



NATIONWIDE INSURANCE
Nationwide is on your side

Nationwide Life Insurance Company
Home Office: Columbus, Ohio



Photo by J. W. Campbell

Helmut W. Lemke, operational manager of the new Capital Cities Imported Cars, Inc. dealership in Glenmont, second from right, poses with, from left, Gordon Arbeitman, James Sauntry, Ralph Carpenter and Ken Hughes of his sales and service staff.

New dealership at Glenmont VW

Capital Cities Imported Cars Inc. has moved its BMW line from Central Ave., Albany, to add to its recently acquired Volkswagen dealership on Rt. 9W, Glenmont, two and a half miles south of Thruway Exit 23.

Helmut W. Lemke is operational manager at the new lo-

cation, formerly occupied by Capitol Volkswagen. Gordon Arbeitman is service manager and James Sauntry and Ken Hughes are on the sales staff.

The new dealership is authorized to handle sales, service and parts for both BMW and VW lines, supported by a trained staff of mechanics and a fully modern service department.

In observance of the opening, a 1976 VW Rabbit will be

*There's an extra dimension
to home nursing.
It's important.
We provide it.*

Skill and experience are basic requirements. So is intrinsic understanding of a patient's needs—and yours. It's often missing.

But not with our RN-supervised nurses. They've got it—or we won't send them to your home. 24-hour service.

MEDICAL PERSONNEL POOL

90 State St., Albany
463-2171



GRAND OPENING

FEBRUARY 16-21

ROGER SMITH



PAINT, WALLPAPER, AND FLOOR COVERING

278 DELAWARE AVE.
439-4468 — 439-4751

WALLPAPER FACTORY REPS and ARMSTRONG FLOORING REPS will be available at various times during the week for consultation.

Clip this coupon and be registered to win up to 12 sq. yds. ARMSTRONG FLOORING of your choice.

Name

Address

Phone

Drawing 5 p.m. Sat., Feb. 21st

50% OFF
on **ALL**

Remaining Fall and
Winter merchandise

Including —

- Coats
- Dresses
- Sportswear,
and

**PAPPAGALLO
SHOES**

Alvin Elitzer Ltd.

FINE APPAREL FOR WOMEN OF ALL AGES
four sixty nine albany-shaker rd., loudonville
barely north of the four corners at osborne road
Hours: Daily 'till 5:30, Fri. 'till 9

Tool's

RESTAURANT
283 Delaware Ave.
Delmar, N.Y. 439-9111

OPEN SUNDAYS

8 A.M. to 8 P.M.

Breakfast till 12:30 P.M.—Lunch & Dinner till 8 P.M.
ATTRACTIVE FAMILY PRICES

Village Transportation Co.

Owner and Operator of
L.C. SMITH TRANSPORTATION, INC.

CHARTER TRIPS

and School Buses for all occasions.

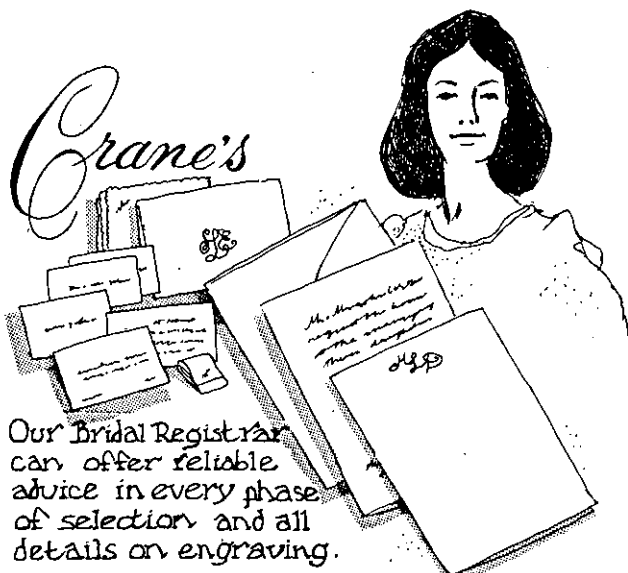
BUSES — 8 to 41 PASSENGERS

439-2315

154-B DELAWARE AVENUE • ELSMERE

mayfair....

for your paper trousseau...
as you begin your life with your new name



Our Bridal Registrar
can offer reliable
advice in every phase
of selection and all
details on engraving.

Allow sufficient time to make an
unhurried selection...
come in today.

mayfair
HOME
FURNISHINGS

Open daily 10-5 · Saturday 10-9 · 458-7080

given away in a drawing March 31. Participants may register as often as they want, with the only requirement a driver's license from New York, New Jersey or Connecticut.

Sewing machine service

A sewing machine service clinic will be conducted by Edward Jurkowski, sales representative from the Viking Sewing Machine Co. for home sewers at the Albany County Resources Development Center in Voorheesville on Monday. The clinic will be held from 10 a.m.-12 noon and repeated at 1 p.m. and 7:30 p.m. Call the Albany County Home Economics office, 765-2874, for registration information.

Steamboaters organize

"Steamboats On The Hudson River," a program presented by William H. Ewen, will be the highlight of the meeting of the Hudson Valley Chapter of the Steamboat Historical Society of America. Ewen, of Hastings-on-Hudson, is the new president of the national organization and will present the charter to the newly organized chapter Friday at 7:30 p.m. at the Delmar branch

of the National Commercial Bank and Trust Co. Anyone interested is welcome or may call Mrs. Arthur C. McDowell, secretary, 439-1419.

Many interested people attended the organizational meeting. There were authors, yachtsmen, historians, captains of ships and other vessels, members of Hudson River "families" as well as ship and steamboat buffs. Temporary officers were appointed: chairman, Douglas Haverley of Loudonville; vice chairman, William E. Tinney, Van Wies Point; treasurer, Capt. Thomas Rhodes, Saratoga; and secretary, Mrs. Arthur C. McDowell of Delmar.

Gym course for boys

The Albany YMCA is conducting a boys gymnastics program on Mondays from 4:30 to 6:30 p.m. for eight weeks. Non-members are welcome to participate and boys from 8 to 18 are eligible to register.

African dancers coming

The Burundi Dancers and Drummers, a group of Afro-Americans at SUNYA, will perform at the First Unitarian Church, 405 Washington Ave., Albany, Feb. 27 at 8 p.m.

What good is a watch that can't be serviced conveniently?

Let's be realistic

Millions of questionable watches are sold every year by non-jewelers and no one wants to service them.

You can't expect your favorite jeweler to be thrilled when you bring in one of those so-called "famous name" discount watches to be repaired, or one of those brands no one ever heard of.

A reputable jeweler just doesn't handle that kind of product. (Or stock batteries for all those cheap digitals of unknown make.)

So unless you don't mind sending your "bargain" watch back to Hong Kong or wherever for servicing, you'll usually find it wasn't such a bargain after all.

It's much wiser and much more practical to
buy your watch from a reputable jeweler.
You'll always receive better value and you'll
always be assured of proper service.

**WE CARRY ONLY REPUTABLE FINE MAKES THAT CAN
BE CONVENIENTLY SERVICED WHEN NEEDED
Prices start about \$20.00 up to \$2000.00**

Adams

Registered Jeweler

58 No. Pearl St., Cor. Steuben (Downtown Albany)
9:30 to 5, Shop Thursday Night 'til 8 P.M.

VOORHEESVILLE

'Rap' sessions on weekly at VCHS

"Rap sessions" between students and faculty have been set up for every Thursday after school in the Clayton A. Bouton High School library, Voorheesville. The sessions were instituted to improve communications between faculty and students after an incident that culminated last month in a 20-minute walkout by 30 students.

At last Thursday's session, discussion points focused on a new pass system, the majority being punished because of a minority, and open study halls.

Mrs. Chris Polinski, a guidance counselor at VCHS, was moderator of the meeting. There was excellent attendance, including Dr. Thomas O'Connor, principal, and Donald Belcer, vice principal, as well as a large number of teachers.

Dean Whalen

Program on Indians

Two noted Indian writers and educators will speak at a dinner meeting of the Women's Press Club of New York State, Inc., at the Cranberry Bog, Wolf Rd., Colonie, at 6 p.m. Wednesday, Feb. 25. Speakers will be Phillip H. Tarbell, a St. Regis Mohawk,

and Ann M. Lewis, a member of the Mohawk Nation. Both are connected with the State Education Department.

Dinner reservations may be made by calling Claire Dunn, 457-6956, before noon Feb. 23. The public will be admitted free following the dinner.

Builders group meets

Tim McMullen of Osmose Wood Preserving Co. of America was guest speaker at Wednesday night's general meeting of the Albany Area Builders Assn. at the Century House, Latham. A reception preceding the dinner was hosted by Karl A. Paulsen & Sons Lumber, Holbrook Lumber Corp. and the Osmose firm.

Winter walk Saturday

Five Rivers Environmental Education Center, Game Farm Rd., Delmar, is offering a guided walk entitled "Enjoying the Winter Woods" on Saturday at 1 p.m. and again at 2:30. The program will last approximately one hour.

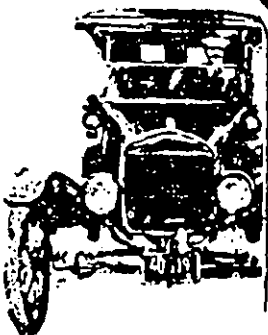
Nolan to speak

Albany Branch, American Association of University Women, will hear State Sen. Howard C. Nolan Jr. at the legislative luncheon on Saturday, Feb. 21, at 1 p.m., at the Polish Community Center, Washington Ave. extension, Albany.

FOR ALL YOUR
INSURANCE NEEDS

AUTO INSURANCE

Whether your car is an antique or brand new, you'll find our low cost premium and complete service to your liking.



Quality, Protection Since 1854

J. EDWARD **Poole** & CO. INC.
INSURANCE
SURETY BONDS
11 NORTH PEARL ST. HO 3-4246

OUR
122nd
YEAR

northeast framing

FOR THE UNUSUAL IN CUSTOM FRAMING

1526 New Scotland Ave., Slingerlands

TUES., WED., THURS., SAT. 10-4

439-7913

Marshall's Garage Inc.

Route 9W — Ravena, N.Y. Tel. 756-6161

YOUR LOCAL TRANSPORTATION CENTER

4 Miles North of
Exit 21B N. Y. Thruway



15 Minutes South
of Albany

Low Cost Rentals

DAILY — WEEKLY — MONTHLY

(Example: Daily \$8.00 per day & .08 per mile)

15-Day Deluxe

GRAND CITIES OF RUSSIA TOUR

May 21 - June 4

Visiting Moscow, Leningrad, Kiev, and Odessa

\$899.00 per person (double occupancy)
plus 10% (service, visa, and tax)

Includes all transportation, hotels, meals,
sightseeing, and many 'extras'

NEW SCOTLAND TRAVEL

269 New Scotland Ave., Albany, N.Y. 12208

489-7444

UNCLE ALBERT'S

BAR &
RESTAURANT



808 Delaware Ave., Delmar
439-9809

Open 7 days a week

• Specializing in
Charbroiled steerb主rgers

• Daily luncheon
salad bar

Appearing Sat., Feb. 21st, 9 p.m.-1 a.m.

JOE CARDILLO
and his **Outlaw Beer Band**
Folk & Country Music

CLASSIFIEDS

Classified Ads are 15¢ per word (\$1.50 minimum) payable in advance before 4 p.m. Friday for following Thursday publication.

Come in person or mail your ad with check or money order to
154 Delaware Ave., Delmar.

439-4949

439-4949

APPLIANCES

Bob Sowers'
DELMAR APPLIANCE
Complete Line of
RCA Victor — Whirlpool

SALES & SERVICE
239 Delaware Ave., Delmar
Phone 439-6723

VAN DYKE'S NORTHEAST. GE
Major Appliances and TV Zenith
Stereo. 243 Delaware Ave., Delmar.
439-6203.

CARPENTRY

Frank Pomakoy
General Carpentry

Repairs, Remodeling, Roofing, Ext. Painting, Additions, Kitchens, Bathrooms, Paneling, Playrooms, Ceilings, Floors.

Free Estimates **767-9460**

**BUILDING
REMODELING**
T.H. DEERE & SONS

Rarick Road, Selkirk
Playrooms, Kitchens, Dormers
Roofing, Baths, Siding
767-2361

CARPET CLEANING

Don't Have Dirty Carpets!
Let us clean them
professionally for you
STEAMEX method
Scotch Cleaning service
439-4857

CHILD CARE

LOVELY COUNTRY HOME. 24 hour
service. 50¢ /hour. 767-9537.

DRAPERIES

CUSTOM DRAPERIES
Shop at home. Large fabric
selection. Bedroom ensembles
for that personal touch
Call Barbara 872-0897

DRESSMAKING

**DRESSMAKING
and ALTERATIONS**
by Fumi Sumida
439-9595 Delmar

FIREPLACE WOOD

WELL SEASONED firewood for
sale. Also by truckload. Will del.
768-2874. 6t311

Furniture Refinished

EXPERT FURNITURE refinishing.
Draperies made to order. Also antiques
for sale. Phone 766-4664.

HORSES BOARDED

JOSEPH'S' TROUBADOUR STABLES, riding lessons, pony rides,
Training. Rt. 9W 767-9537.

TORCHY'S TACK SHOP
Jericho Rd., Selkirk
RO 7-2701

Mon.-Sat. 9-9
Boarding & Training Stables
Riding Supplies & Saddles
Lessons • Indoor Arena

INTERIOR DECORATING

INTERIOR DECORATING — Delmar
Decorators, Delaware Plaza, Call 439-
4130.

KECK'S DRAPERY CO.

Custom Draperies,
Slip Covers, bedspreads.
Large Fabric Selection
Attractive Prices . . .
... Home Service
Call **JOAN KEMMER 459-4167**

MASON WORK

EXPERIENCED, all types masonry,
new or repairs, Guidara. 439-1763 eves.
CHIMNEYS, foundations, slabs, side-
walks, steps, stones, brick, water-
proofing, carpentry. 439-1593.

MOTORCYCLES

**YAMAHA • TRIUMPH
MOTORCYCLES**
Sales & Service
Parts & Accessories
DAVE FLACK
Rt. 9W, Ravena • **756-2900**

MOVERS

D.L. MOVERS, Inc. 439-5210. Local
and long distance, no job too small.

DAN DONNELLY MOVING and
trucking. Delivery service. Free esti-
mates. 767-2711.

PERMANENT WAVING

SPECIALIZING IN Breck, Realistic
Rayette and Caryl Richards perman-
ents, hair tinting and bleaching. Mele's
Beauty Salon. Plaza Shopping Center.
439-4411

Painting & Paperhanging

 **D.L. CHASE**
**Painting
Contractor**
Residential Specialists
Phone 768-2069

DON VOGEL Painting Contractor
— exterior, interior, paperhanging,
repairs. 20 years experience. 489-
0989, 489-7914.

VOGEL
PAINTING CONTRACTOR
Interiors — Exteriors
PAPERHANGING
COMMERCIAL SPRAYING
Free Estimates — Guaranteed
INSURED 439-7922

PLUMBING

B. P. WOOD
Plumbing & Heating
24 Hour Service
Phone 439-9454

PLUMBING & HEATING

ABLE, HONEST — I do plumb-
ing, heating, bath & kitchen
remodeling. Free est. Low pri-
ces. 465-4078, if no ans 235-5394

SEPTIC TANK SERVICE

NORMANSKILL SEPTIC TANK
Cleaners. We install dry wells, septic
tanks, drain fields. 767-9287.

DELMAR SANITARY Cleaners, ser-
vice Tri-Village Area, over 20 years.
768-2904.

ROOFING

ROOFING



Asphalt. Slate. Built-up.
Wood Shingle. Gutters. Ice
Slides. Repairs. Insured.
Guaranteed.

FREE ESTIMATES
VANCANS
439-3541

ROOFING

**Serving the
Bethlehem Community
for years.**

Vanguard Roofing Co.

Where Superior Workmanship
Still Means Something!
Call **JAMES STAATS**
for a free estimate **767-2712**
Fully Insured.

Sewing Machine Repairs

SEWING MACHINES REPAIRED.
Work guaranteed. Delmar Decorators,
3 Delaware Plaza, Delmar. 439-4130

WELL KNOWN JOHN BESSON re-
pairs all makes of sewing machines,
in your home, free estimates. Sells
second hand sewing machines, guar-
anteed for one year. 463-2520.

SKATES SHARPENED

SKATES SHARPENED Ice skates
sharpened. Also saws, chain saws,
scissors, knives, garden tools, etc.
439-5156 or 439-3893.

CROSS-COUNTRY SKIERS

**Meyers
Bicycle
Center**

TOPPEN HARJU
Rentals — Sales

1958 New Scotland Rd. **439-5966**



ROOM WITH BOARD

Parents boarded: lovely country home. Visit with them anytime 767-9537. tf

TREE SERVICE

HERM'S TREE Service, Call IV2-5231

TABLE PADS.

TABLE PADS — made to order; Delmar Decorators 439-4130.

TRUCKING

PIANOS, APPLIANCES, light truck—Call for free estimates. 456-3155.

SITUATIONS WANTED

PRIVATE BARTENDING for all occasions. 439-2875. tf

TRASH REMOVAL reasonable rates. Call 439-2372. 2t219

WATCH REPAIRING

EXPERT WATCH AND JEWELRY REPAIRS. Diamond settings, engraving wedding and engagement rings, reasonable, your trusted jeweler, Le-Wanda, Delaware Plaza Shopping Ctr. 439-9665.

WATCH REPAIRING, expert workmanship. All work guaranteed. Also engraving, diamond setting watch bands. Harry L. Brown, Jeweler, 4 Corners, Delmar. 439-2718.

WINDOW SHADES

CLOTH AND WOOD SHADES in stock and to order. Delmar Decorators. 439-4130

AUTOMOTIVE

TOP PRICES PAID FOR CORVAIRS

all models

Contact John Murray
489-5551

Marsh Hallman Chevrolet

781 CENTRAL AVE.
ALBANY, N.Y.

INSTRUCTION

GUJAR INSTRUTION

SUNYA Music Graduate accepting new students from Delmar-Voorheesville area. Beginners and advanced students of any age accepted. Call Kyle Keenan 456-5241.

HELP WANTED

AVON

The day's not too short to work and be a good parent! Succeed at both as an Avon Representative. Excellent earnings.

Call Mrs. Callisto ST 5-9857

DECORAMA Party Plan. Sell home accessories — finest quality. Phone 785-0893. 3t226

WANTED TO BUY

GUNG OF ALL KINDS bought for Cash — Moore's Trading Post, 9W, Ravena. 756-2558.

WANTED:

Old coins, scrap gold & silver, campaign buttons, guns, swords old toys, World War I & II military metals and souvenirs, antiques, also buy & sell stamps & stamp supplies.

Ron & Mary Kearns

DELMAR COIN SHOP
323 Delaware Ave.

Delmar, N.Y. — 439-7587

Merchandise for Sale

ADDRESSOGRAPH machine. Elliott Model 2000 with stencils. Inquire Spotlight, Box BL. tf

MANE RACCOON man-made fur coat. Lady's Beaver Trim Coat. 465-4585.

ELECTRIC SEWING machine in cabinet. One single bedroom set. Desk and chair set. 767-9833.

FUR COAT, genuine Hudson Seal, black long, large size. Mink collar and cuffs. Condition fair. \$65. Telephone 439-9709.

YAMAHA SNOWMOBILE 1971 new track. SL292 w/gyt kit, \$375, firm after 6 P.M. 768-2119. 2t226

PERSONAL

DRIVING SARASOTA vicinity, if you are leaving between now and Feb. 27, would you take small carton of Spotlights to Sarasota address for Delmar Day reunion. Call Spotlight, 439-4949. 2t226

Real Estate for Rent

APARTMENT, single room with eating area, bath, garage, utilities, \$100.00. 439-6880.

BRAND NEW large luxury duplex. 2 bedrooms, 2 baths, garage, full basement, large yard, air-conditioned. No pets. Delmar. \$275/mo. 439-1342 9 A.M.-8 P.M. 4t226

APARTMENT available March 1st — 335 Delaware Ave. 2 br. \$170 without utilities. No pets. 439-5751. 2t219

SUBSCRIBE TO THE SPOTLIGHT

Real Estate for Sale

MOBILE HOME for sale, 1973 Somerset with 12x7 slide out, 3 bedroom, fully skirted with porch, set up in court. Asking \$6,500.00. 767-3487 or 767-3390. 4t219

PETS

SIAMESE KITTENS \$20.00 each. Housebroken, lovable pets to enjoy. 439-3749. 2t219

MINIATURE SCHNAUZER puppies — 8 wks., shots, excellent family dogs. 439-6731.

COME HEAR THE NEW '76 SAAB STORY!!

**New Salem
Garage** Route 85
New Salem, N.Y.

LIGHT TRUCKING

Odd Jobs Tree Service
Attics & Cellars Cleaned

Phone Mark 439-1692

SIDES OF BEEF
Custom Cut and
Wrapped to your order.
**WOODRIDGE FARM
MARKET** 434-8903



DAN & BETTY DRYDEN'S SKI SCHOOL

for boys and girls ages 7-15
Saturdays — Jan. thru March.
All day instruction, practice, fun.
Transportation from Albany
& Delmar to ski areas provided.
For information & rates, phone:
462-5200

Get the COMPLETE story of this area in the Spotlight every week of the year. One way to be assured of receiving the next 52 issues is to fill in the blank below. Yes, we'd like to add your name to an ever-growing list of PAID subscribers!



SPOTLIGHT, 154 Delaware Ave., Delmar, N.Y. 12054

☐ renewal

Please enter my ☐ new subscription to the Spotlight. I have enclosed \$4.00 for the next 52 issues.

NAME _____

STREET ADDRESS _____

P.O. _____ ZIP _____

KELLY TAX SERVICE
PERSONAL INCOME TAX RETURNS PREPARED
 Professional, Efficient Service
 Your Home or My Office — Day - Evenings - Weekends
 CALL FOR APPOINTMENTS **489-2390**

DELAWARE IMPORTS

579 DELAWARE AVE., Corner Mereline Ave., Albany, N.Y.

BOTTISTI'S SPAG. SAUCE & FROZEN PIZZA
ITALIAN BREAD & ROLLS, Fresh Daily
CAPPIELLO DAIRY PRODUCTS
ITALIAN SAUSAGE — Hot & Sweet
FETA CHEESE & FILO PASTRY LEAVES
COLD BEER

STORE HOURS:

Mon. thru Fri. 10 a.m.-8 p.m.

Sat. 9 a.m.-7 p.m. • Sun. 9 a.m.-1 p.m.

465-3762

Household Moving
 Commercial Moving
 Heavy Machinery Rigging



G & S MOVING and RIGGING INC.

137 BROAD ST. ALBANY, N.Y. 12202

HAP SIARY
 449-7841
 462-9192



The Golden Acorn Imports

1526 New Scotland Road • Slingerlands, N.Y. 12159

GIFTS—BASKETRY—TINWARE—ACCESSORIES
 439-2501

TOLL GATE

ICE CREAM & COFFEE SHOP
 in Slingerlands

ANNUAL VACATION
SUNDAY, FEBRUARY 8th
thru
SUNDAY, FEBRUARY 22nd

BACK FROM VACATION
MONDAY, FEBRUARY 23rd at 11:00 A.M.

Wiggand-Wieland

Nancy Ann Wiggand, daughter of Mr. and Mrs. Donald Wiggand, 11 Weiser St., Glenmont, and Stephen Jesse Wie-



Mrs. Donald Wiggand

land, 1 Jericho Rd., Selkirk, were married at the Glenmont Community Church with Rev. Jack Cooper and Rev. James Daley officiating.

The bride, given in marriage by her father, is a graduate of Guilderland Central High School. Mr. Wieland, son of Mr. and Mrs. Frederick Wieland is a graduate of Ravena-Coeymans - Selkirk Central High School and is employed

by the State Dept. of Taxation and Finance.

Debbie Wiggand was her sister's maid of honor. Other attendants were Brenda and Darlene Wiggand, sisters, Linda Lendthart, Cathy Short-sleeves and Laurie Chase.

Frederick Wieland was best man for his brother. Ushers were Glenn Hammond, Bruce Wade, David Rueckert and Harlen Metz.

Pamela Busch engaged to wed

Mr. and Mrs. Alfred R. Busch of 98 Maple Ave., Sel-



Pamela Busch

CLEARANCE SALE!

At our '76 Shopper's Village Location
436-7822

Savings up to \$500⁰⁰ at both locations



Area's Largest Selection!

1047 Central Ave.
 Albany, N.Y. 12205

Piano & Organ Mart Inc.

459-7777

FREE

Hollywood Frame
 reg. \$29.95

with purchase of any size
 boxspring & mattress set

BURRICK FURNITURE CO.

560 DELAWARE AVE., ALBANY, N.Y. 465-5112

kirk, announce the engagement of their daughter, Pamela, to Michael H. Ostrander, son of Mr. and Mrs. George Ostrander of Bridge St., South Bethlehem.

Miss Busch is a graduate of Ravena - Coeymans - Selkirk High School and helps in her family's store, Ed's Variety, Selkirk.

Mr. Ostrander is also a graduate of Ravena-Coeymans-Selkirk High School and currently is employed by Wickes Lumber Co.

A June 5 wedding is scheduled.

Carole Fiato to wed

The engagement of Carole A. Fiato, 79 Dumbarton Dr., Delmar, to Douglas A. Callender III, son of Douglas A. Callender Jr. and the late Mrs. Melba W. Callender of Elnora, has been announced by her parents, Mr. and Mrs. Joseph D. Fiato Jr.

The prospective bride is a graduate of Bethlehem Central



Louis Studio

Carole A. Fiato

High School and is employed by Liberty Mutual Insurance Co.

Mr. Callender was graduated from Shenendehowa High School and attended State University of New York at Plattsburgh. He is employed by Varsity Inns, Inc.

The couple has selected June 19 for their wedding.

Students to wed

Mr. and Mrs. Preston Dalman of Grand Ledge, Mich., announce the engagement of

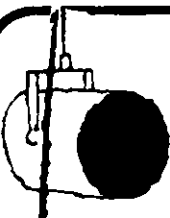


Mary Lynn Dalman

their daughter, Mary Lynn, to Timothy J. Van Heest, son of Rev. and Mrs. Gerard Van Heest of Delmar.

Miss Dalman is a junior at Hope College, Holland, Mich., and is majoring in psychology, with a minor in Dance. Tim Van Heest graduated from Bethlehem Central High School in 1972 and is a senior at Hope College majoring in philosophy and English.

The wedding will be on June 11 at the bride's church in Lansing, Mich.



SPOTLIGHT on community corner

Little League Registration

Registration for the 1976 Tri-Village Little League will be held on the next two Saturdays, Feb. 21 and 28, from 1-4 p.m. at St. Thomas School, Delmar.

Players must be 8 years old on or before July 31, 1976 or will not have reached their 13th birthday by that date. Those registering for the first time must show birth certificate.

Community Corner, a public service column of important community events, is sponsored by



Member F.D.I.C.

Bethlehem's hometown Savings Bank

163 Delaware Avenue, Delmar
(Opposite Delaware Shopping Plaza)
439-9941

• OUR OWN BAKING

• PARTY FACILITIES

Gateway

DINER • RESTAURANT

899 Central Ave.
Albany

CHARLES T. BOULOUKOS

Proprietor

• COCKTAILS

• 250 SEATS

OPEN

24

HRS.

NEXT TO WESTGATE

(518) 482-7557

**IT'S HERE!!!
NOW
AT ONLY
\$129⁹⁵**



THE COMPANY THAT
CREATED THE INDUSTRY



FEATURES

- Advanced LSI circuitry
- Efficient red printing in case of negative numbers and positive subtrahend
- Underflow system (multiplication & division)
- Overflow error check device
- Zero suppress system
- Add mode
- Decimal selector (0, 2, 4)
- Constant multiplication & division
- Tax/Discount calculation
- Chain multiplication & division
- Percentage calculation
- Grand total addition and subtraction

All this for only \$129⁹⁵

Best of All!

Doing business with the People of ALLIED who are
not just in business to sell calculators,
but to service them!

ORDER TODAY!!!

**Also available
Portables
Priced from
\$14.95**

**ALLIED
BUSINESS
EQUIPMENT**

617 Central Ave., Albany, N.Y. — 43

7-6789-15

Beth. Public Library
451 Delaware Ave.
Delmar, N.Y. 12054



NOT FOR CIRCULATION