

The Spotlight

Controlled Circulation Publication

BETHLEHEM PUBLIC LIBRARY

August 5, 1976
Vol. XXII, No. 32

20¢

Graphic newsweekly serving the towns of Bethlehem, New Scotland and nearby communities



A summer toot in the Park



I'm getting all my money's worth... with a "LIVEABLE" Mortgage Loan from CSB.

**You can
too.**

The biggest investment I've made to date is our home. And I got it with a low-cost mortgage loan from CSB. I'm actually saving money, thanks to CSB's low interest rate. And the monthly payments are tailored to our budget. In fact, I can even prepay the mortgage loan ahead of schedule... because, unlike other banks, there's no prepayment penalty at Catskill Savings Bank.

So, if you're about to buy your home, take my advice. Talk to the money savers and get a "liveable" home mortgage loan from the bank you can count on...

for all your money's worth.



**Catskill
Savings
Bank**

341 Main Street, Catskill • Route 9W, Ravena

Member
FDIC



Spotlight

is published every Thursday by Newsgraphics, Inc., 414 Kenwood Ave., Delmar, N.Y. 12054. N.A. Boynton, editor-publisher. Controlled circulation, postage paid at Delmar, N.Y. News and copy deadline 4 p.m. Friday for following week's issue.

Spotlight CALENDAR

Tri-Village FISH — Call 439-3578 for voluntary service — 24 hours a day the year 'round — offered by residents of Delmar, Elsmere and Slingerlands to their neighbors in need of help in any emergency.

Bethlehem Jaycees meet first and third Wednesdays of the month, 8 P.m., Center Inn, 9W, Glenmont.

Welcome Wagon — Newcomers and mothers of new babies call 785-9640, Mon. thru Sat., 8:30 A.M., 6:00 p.m. so you may have a Welcome Wagon call.

Bethlehem Memorial Auxillary to Post #3185, Veterans of Foreign Wars, meets the third Monday of every month, at the Post Rooms, 404 Delaware Ave., Delmar.

The Albany County Pistol Club, Winnie Place and Maewin Drive, Delmar, welcomes guests at its indoor pistol range every Tuesday at 8 p.m. Information: Dave Herbach, 439-4372 or Tom Corrigan, 439-3301.

Monarch Club of Albany meets every Tuesday night at the Center Inn, Glenmont, 6:00 P.M.

Bethlehem B.P.O.E. 2233, first and third Wednesdays, 8 p.m. at the Lodge in Cedar Hill, Rt. 144. Ladies' Auxillary second Wednesday.

Bethlehem Youth Employment Service, 114 Adams St., Delmar. School year schedule, Mon.-Fri., 8:30-1. Answering service in afternoons. Telephone 439-2238.

Five Rivers Environmental Education Center, Game Farm Rd., Delmar, open daily during daylight hours. Exhibit room open daily 9 a.m. to 4:30 p.m.

DEVELLIS BROS. HOME IMPROVEMENTS

We specialize in
**ASPHALT ROOFING
SNOW SLIDES
ALUMINUM AND
VINYL SIDING
AND TRIM**

Fully Insured Free Estimates
765-2188 765-4197
After 6:00

You're likely to find a West End Federal office almost anywhere.



... like at Mullen Pharmacy, Delmar,
or Denby's, Stuyvesant Plaza.

We're in both these locations, because that's where a lot of people go. And, if we can help you shop *and* bank — all in one trip — we think we're being helpful, because we can save you the nuisance and expense of making two trips.

If it has to do with money, come see us in the most unlikely — but most helpful, friendly and neighborly places, like Mullen's Pharmacy, Delmar, and Denby's, Stuyvesant Plaza . . . as well as at our main headquarters, 854 Madison Ave., Albany.

**Coming Soon to -
Clifton Country Mall**

West End Federal

Savings and Loan Association of Albany
Main office: 854 Madison Avenue, Albany
Satellite offices: Mullen Pharmacy, Delmar,
& Denby's, Stuyvesant Plaza

ANTIQUES

Peddler's Post LTD.

300 DELAWARE AVE., DELMAR
439-9261

TAKE ADVANTAGE OF US!

We're making room for more finds — so we'll
give you

20% OFF

on anything you take a fancy to!

Glenmont Lions Club meets 2nd and 4th Tuesdays at La Casa Restaurant, Selkirk, 6:30 p.m. Visitors welcome. Info: Charles Sperbeck, 439-9165.

Bethlehem Lions Club meets first and third Wednesdays at LaCasa, Selkirk, 6:30 p.m.

AARP meets 12:30 p.m., third Tuesday of month, Delmar First United Methodist Church, Kenwood Avenue, Delmar.

Half Moon Button Club of Albany, third Wednesday noon of the month at Bethlehem Public Library. For information 872-0068.

Kiwanis Club of Delmar, Mondays at 6:15 at Center Inn, Glenmont.

League of Women Voters, Thursdays, 9:30 a.m., once or twice a month, at Bethlehem Public Library. Information, 767-2094.

Rotary Club of Delmar meets every Tuesday night 6:15 at Schrafft's Motel.

The Delmar Community Orchestra rehearses every Monday evening from 7:30-9:30 at the First United Methodist Church of Delmar.

Gam-Anon, for wives of compulsive gamblers, meets Wednesdays 8:15 p.m., St. Pius Church, Loudonville, 462-6916 or P.O. Box 23, Albany.

Historical films, Community Room, Bethlehem Library, 12 noon, bring lunch, free coffee.

Albany chapter, Railroad Evangelistic Assn. meets third Saturday of each month, First Reformed Church of Bethlehem, 7:15 P.M.

Onesquethaw O.E.S. meets on the first and third Wednesday of every month at the Masonic Temple in Delmar.

Glenmont Homemakers meet third Wednesday of month; Glenmont Comm. Church, 8 p.m.

Sports Car Club of America, first Wed. of each month 8:00 p.m. at the Center Inn, Glenmont, Marie Corrin, 869-6948.

Bethlehem Junior Woman's Club meets 2nd Wednesday of each month, 8 p.m., Bethlehem Public Library.

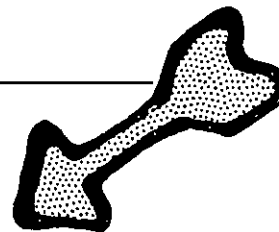
Rosary — St. Thomas Church, Adams Place, Delmar, every Thursday at 11:45 a.m.

Bethlehem Recycling Program (paper, cans, glass), Town Garage, 114 Adams St., Delmar. Mon. thru Fri., 8 a.m. - 4 p.m. Papers should be tied, cans flattened, bottles clean w/metal removed.

Empire Motor Sports Club, every Thursday at 8 at the Center Inn, Rt. 9W, Glenmont. Lee Beauregard — 456-0019.

Citizen Band Radio Club, first Thursday at 8 p.m. at the Center Inn, Rt. 9W, Glenmont. Danny Oat-hout, 463-0804.

**1
2 PRICE**



ALL SALE APPAREL

- DRESSES
- COATS
- LINGERIE
- JEWELRY
- SPORTSWEAR
- ROBES
- ACCESSORIES
- RAIN COATS
- LONG SKIRTS
- ETC.

TOWN AND TWEED

DELAWARE PLAZA
DELMAR, N.Y.

Open daily 10-9; Sats. 10 to 5:30

Tennis Rackets
 Restrung — Regripped
 Violins Repaired
 Bows Reaired
C. M. LACY
 3 Becker Terrace — 439-9739



**BASSETT
 SLIPCOVERS**
 Save Time and Money
 Your Material or Ours
**Home, Auto &
 Van Interiors**
 FREE ESTIMATES
 Call 765-3631



**Happy's
 Coach House**

Rte. 88, New Salem, N.Y.
 Out New Scotland Ave.

Proudly Presents
ALEX MASTERPOL



Bright new young organist
 performing for the first time in
 the Albany area Wed.-Sun.

Recent appearances at Tread-
 way & Holiday Inns in Las
 Vegas, Syracuse & Utica.

Serving the finest steaks, chops,
 lobster tails & seafood. Nightly
 except Mon. from 5 p.m. Wed-
 dings, Banquets, Parties. Open
 11:30 for lunch.

765-9382 765-4426

THURSDAY, AUGUST 5

Summer band concert, Elm Ave.
 Park, 8 p.m.

An Evening with Dr. Seuss, Clarks-
 ville Community Church, 7:30 p.m.

FRIDAY, AUGUST 6

Go Fly a Kite . . . but make it first,
 Bethlehem Library, 2-4 p.m. Open
 to 4th grade and up.

An Evening with Dr. Seuss, featur-
 ing two short films, Bethlehem Li-
 brary, 7:30 p.m.

Punkintown Fair, Aug. 6-7, Fair-
 grounds, Rt. 85A, New Salem, 7 p.m.

Firemen's Fair, Aug. 6-7, Firehouse,
 Glenmont Rd., Glenmont, 7 p.m.

MONDAY, AUGUST 9

"Everything you always wanted to
 know about pets," grades 2-5, Beth-
 lehem Library parking lot, 2-3 p.m.
 Bring a pet. Prizes.

Karate demonstration, led by Al
 Cannella, 8 p.m., Bethlehem Li-
 brary.

TUESDAY, AUGUST 10

Guided walk, "Summer Wild-
 flowers," Five Rivers Center, Game
 Farm Rd., 7 p.m.

WEDNESDAY, AUGUST 11

Evening on the Green, featuring
 James Gosch, magician. Lawn be-
 hind Bethlehem Library, 7:30 p.m.
 Raindate Aug. 13.

Wednesday feature film, Walt Dis-
 ney's "Brightly of the Grand Can-
 yon." Bethlehem Library, 2 p.m.

Slide-lecture by Sas Colby, na-
 tionally known artist-teacher, Cap-
 ital District chapter, Embroiders'
 Guild of America, Bethlehem Li-
 brary, 8 p.m. Free, public wel-
 come.

Public hearing, Bethlehem Town
 Board, on the proposed Carstead
 Dr. extension of Water District
 No. 1, town hall 8 p.m.

Public hearing, Bethlehem Board
 of Appeals, on application of Eu-
 gene and Margaret A. Mirabelli
 Jr., 29 Bennett Ter., Delmar, for
 variance to add a room on the south
 side of their residence, town hall
 8 p.m.

THURSDAY, AUGUST 12

Clarksville family film night, Clarks-
 ville Community Reformed Church.
 "Johnny Tremain." 7:30 p.m.

FRIDAY, AUGUST 13

Family Film Night, "Johnny Tre-
 main," Bethlehem Library, 7:30 p.m.

SATURDAY, AUGUST 14

Open reunion for all Bethlehem
 Central High School graduates,
 sponsored by the class of '61. Pic-
 nic at Sunny Acres Day Camp, noon
 to 4 p.m.; dinner-dance at Quality
 Inn, 7:30 p.m. 439-9736 or 439-
 9277 for reservations.

area arts

A capsule listing of cultural events easily accessible to
 Bethlehem-New Scotland residents, provided as a com-
 munity service by the General Electric Co. plastics plant,
 Selkirk. Telephone numbers are for information and
 tickets.

THEATER

"Hay Fever," Noel Coward comedy, final production of SUNYA
 summer theater season, Performing Arts Center, State Uni-
 versity at Albany, Aug. 4-7, 8 p.m. Box office in lobby, 457-
 8606 between 11 a.m. and 4 p.m.

"Fiddler on the Roof," Mac-Haydn Theater, Chatham Fair-
 grounds, Aug. 4-8, 8 p.m. (Sunday 7 p.m.); "Carousel,"
 Rodgers and Hammerstein musical, Aug. 11-15. Tickets PO
 Box 204, Chatham, N.Y. 12037 or phone 392-9292.

"6 Rms Riv Vu," contemporary comedy, JCA Theater Arts,
 Junior College of Albany, 140 New Scotland Ave., Aug. 5-8,
 8 p.m. 445-1725.

"Promenade All," Woodstock Playhouse, through Aug. 15, 8:30
 p.m. (Sunday 7 p.m., matinees Wednesdays and Saturdays
 2:30 p.m.) 914-679-2436.

MUSIC

Vocal recital, Patricia Danzig, Guggenheim Pavilion, Rensselaer-
 ville, Aug. 8, 8:30 p.m. 797-3477.

Concert, organist Larry Young, Capital District Jazz Society, at
 N.O.D. Lounge, 1925 Curry Rd., Rotterdam, Aug. 14, 9 p.m.
 434-6369.

EXHIBITS

Albany Institute of History & Art, Sanford R. Gifford mini-exhibi-
 tion of watercolors and Catskill and Italian sketches, also
 "Albany Old and New," watercolors by Gordon Howe, through
 Sept. 10.

HISTORIC TOURS

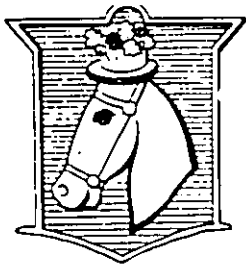
Walking tour of historic Washington Park and Second St., Troy,
 narrative by Nancy Connell, Aug. 7, 1 p.m. (Rain date Aug. 8),
 assemble RCCA, 59 Second St.

GENERAL ELECTRIC



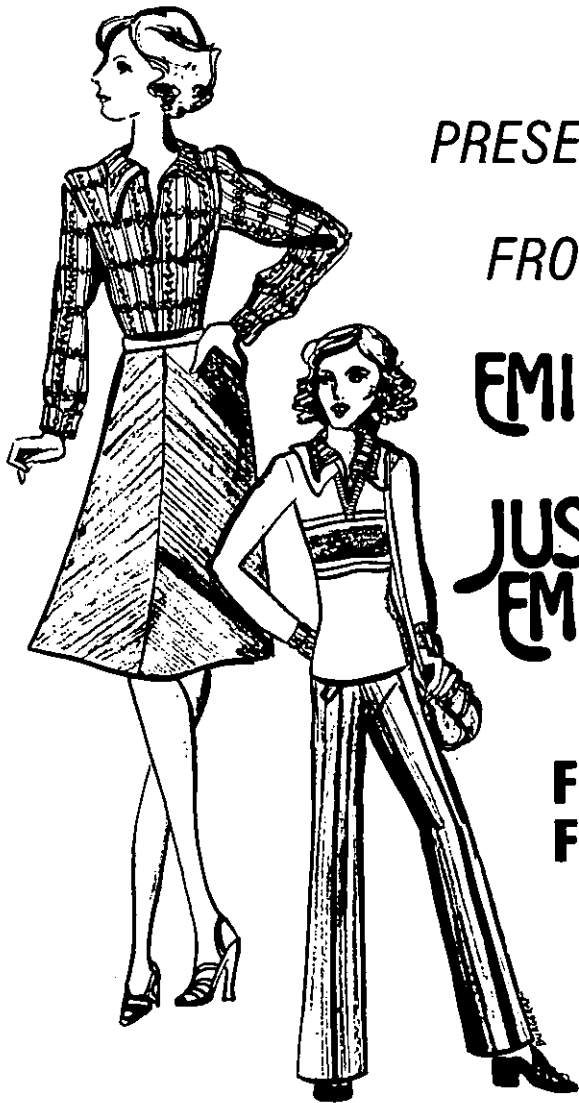
SELKIRK, NEW YORK 12158

Equal Opportunity Employer



THE
Clothes Horse

AT TOLL GATE INC.
1569 NEW SCOTLAND ROAD
SLINGERLANDS, N.Y. 12159



PRESENTS

FROM

EMILY

JUST
EMILY.

FOR
FALL



Mon.-Tues.-Wed.-Sat. 10-6
Thurs.-Fri. 10-10



**CONVENIENT
FOOD MART**

OPEN 7 DAYS A WEEK, 7 A.M.-12 MIDNIGHT

834 Kenwood Ave., Slingerlands 439-9802

GROCERY — DAIRY PRODUCTS — DELI — BEER — SODA
SANDWICHES, HOT CHOCOLATE, COFFEE OR TEA TO GO

JOIN OUR

BONUS MILK CLUB

For every 12 gallons of
Convenient Food Mart Homogenized Milk*
purchased get one gallon FREE!

MEMBERS ELIGIBLE TO WIN A
10-SPEED BIKE — 2 to be awarded
DRAWING DECEMBER 23

*No Substitution

**DiNAPOLI
&
DiNAPOLI**

New York State



Guild Opticians

**Have your Ophthalmologist
check your eyes now
before school**

**We can help you arrange
an appointment**

**Now showing widest selection
of designer frames**

282 Delaware Ave.
Delmar 439-6309

457 Madison Ave.
Albany 449-3200

The Spotlight

Controlled Circulation Publication

August 5, 1976
Vol. XXII, No. 32

Graphic newsweekly serving the towns of Bethlehem, New Scotland and nearby communities

393 DELAWARE AVE.

Up-zoning in Bethlehem: a parcel success

Few matters on the public agenda in Bethlehem are as sensitive as zoning and the interactions of residents and developers, which explains why any change in area classifications takes a long time. Last week the town board completed the procedural cycle on one major zoning proposal and advanced a second proposal one more step along the route.

The first action saw the board authorize a change in the classification of a large tract in Slingerlands north of New Scotland Rd. from Residential A to Residential Double-A. The proposal, previously approved by the town's seven-member planning board and thrashed out at a public hearing by the town board, involves a sizeable area extending from Font Grove Rd. north of the D&H tracks to the Slingerlands By-pass west of Blessing Rd. The size of the area is

believed to be in excess of 250 acres.

Double-A zoning restricts future residential building to a minimum lot size of 10,500 square feet and permits duplex units. Under the Single-A classification multiple-unit dwellings are permitted and residential building is permitted on lot sizes as small as 8,500 square feet.

Opponents of the petition contend the up-grading limits the types of homes that can be built, and thus detracts from the market value of their land. Most of the hamlet of Slingerlands is zoned Double-A with the exception of sections along New Scotland Rd. and Kenwood Ave. east of the toll gate intersection.

In a separate action, the town board tabled a recommendation by the planning board to upgrade a rectangular section of Glenmont from a mixed quilt of light industrial

and Residential A to a solid block of Residential A. The procedure is routine pending the board's next move: setting the date for a public hearing.

Three weeks ago members of the planning board took a "walking tour" of the area as part of their discussions on the proposal by citizens of Asprion Rd. to assign a more uniform designation to the area. The land in question — 116 acres — lies between Rt. 9W and the Thruway and between Glenmont Rd. and the southern boundaries of properties on the south side of Asprion Rd.

The homeowners who filed the original request two months ago told the planning board at an informational meeting in town hall on June 22 that further industrial development would worsen what they consider a hazardous traffic situation on Rt. 9W. They also expressed fears their properties were in danger of becoming "islands" surrounded by commercial and industrial developments, a situation they said would have an eroding effect on the market value of their holdings.

lems on Van Dyke Rd. just off Delaware Ave.

School officials are opposed to a 35-lot residential subdivision proposed by Slingerlands developer Wolf Kraemer on 13 acres west of Van Dyke Rd. opposite the side entrances of Bethlehem Central High School. The board feels the plan would amplify what it considers an already congested traffic situation and would pose safety hazards to hundreds of students using the area daily when school is in session.

Planning board members suggested the school permit widening of Van Dyke Rd. and also use school property to construct a new driveway for bus traffic. The school board rejected both proposals. Kraemer has offered 12 to 15 feet of his land to the town for widening the road on the west side. Supt. of Schools Lawrence A. Zinn said widening the road would bring traffic too close to the building and construction of a new driveway for buses would be too expensive.

DELMAR Sheaffer sees red on light

When the State Department of Transportation failed to give the town of Bethlehem a green light to install a traffic signal at the intersection of Delaware Ave. and Adams St., Supervisor Harry H. Sheaffer saw red.

DOT turned down Sheaffer's request, saying its own studies

BETHLEHEM Planners huddle with educators

Members of Bethlehem's board of education and town planning board are getting together this week or next in an effort to resolve an impasse over prospective traffic prob-



Mary Lou Bartolotta of Livingston, Columbia County, Democratic candidate for the 102nd Assembly District seat in November, met with Bethlehem's town Democratic committee Thursday. From left: Milt Mercado, her campaign manager; Bill Burkhard, her coordinator for Bethlehem, and Ken Thacher, town Democratic chairman.

of the intersection showed only half the requirements for a signal. The rejection didn't take with the supervisor, who told the town board at its regular meeting last week he was asking the DOT to reconsider the request. He said he based his appeal on the fact there have been several accidents at the corner, and it is used regularly by emergency vehicles from the Delmar Fire Dept. stationed 300 feet from the intersection.

PATRONIZE
Spotlight advertisers

Embroidery lecture

Capital District chapter of the Embroiderer's Guild of America will offer day workshops and an evening slide-lecture next Wednesday and Thursday with Sas Colby, well-known fabric artist-teacher from Berkeley, Calif. Ms. Colby creates unusual and imaginative costumes and clothing, masks, banners and boxes from precious fabrics of silk, velvet and satin. Friends are welcome at the evening slide lecture Wednesday at 8 in the Bethlehem Library.

BETHLEHEM School libraries offering service

Elementary schools in the Bethlehem Central school district are inviting pupils to borrow books from school libraries this summer. This is the schedule of times when the libraries will be open: Clarks-ville — Mondays, 9 a.m. to noon; Elsmere — Tuesdays, 1:15 to 3:15 p.m.; Glenmont — Wednesdays, 1 to 3 p.m. and Slingerlands — Tuesday, Aug. 10 and Monday, Aug. 16, 1:30 to 3 p.m. Hamagrael's schedule was unavailable at press time, but those pupils or parents may call there (439-4905) for the information.

This is the first year arrangements have been made for weekly summertime use of the elementary school libraries, and school officials hope many children will take advantage of this close-to-home access to many enjoyable books. Much summertime use is made of school playgrounds and recreational facilities, but the vacation is also a wonderful time for youngsters to make good use of the contents of school libraries.

Glenmont fair continues

Glenmont's friendly firemen are preparing for another weekend of fun and games, including the "Moon Walk" for children, at their 20th annual firemen's fair. The action gets underway at 7 p.m. Friday and Saturday, with a country auction scheduled for 1 p.m. Saturday as a special feature at the fairgrounds. Charles B. Fritts is fair chairman for the sponsors, Selkirk Volunteer Fire Co. No. 2.

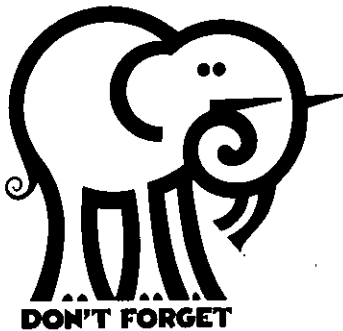
Kick the weed

American Cancer Society is sponsoring a Stop Smoking program Tuesday and Thursday evenings from 7-9 p.m., during August at Memorial Hospital, Albany. A \$5 registration fee is charged to cover cost of materials. Information 449-8722.

BC '61 outing

Bethlehem Central Class of 1961 is planning an outing and dinner dance for their 15th reunion on Saturday, Aug. 14, at Sunny Acres Day Camp. The picnic and outing will be from 12 noon to 4 p.m., followed by a dinner dance at Quality Inn starting at 7:30 p.m. Members of all other classes at BC are invited. For information and reservations, call Esther Cornell, 439-9736, or Judi Von Ronne, 439-9277.

BETHLEHEM REPUBLICANS 17th Annual Stag STEAK ROAST and outing



WEDNESDAY, AUGUST 18

MURRAY-JENNEX SUNSET PARK
Unionville

REFRESHMENTS, CLAMS, GAMES start 3 P.M.
DINNER SERVED 6 P.M.

TICKETS:

See Your GOP Committeeman or
Merwyn K. Atwood, Ticket Chairman
409 Delaware Avenue
439-5720

O'SHEA Getty STATION

4 Corners, Delmar

LUBE SERVICE AND
COMPLETE MECHANICAL
REPAIRS

Open 7 days, 6:30 a.m.-10 p.m.
— 439-9808

Wedding Photographs . . . by Campbell

PORTRAIT
CANDID
COMMERCIAL

439-1381

Delmar, N.Y.

WHY BUY FROM STRANGERS

We've been here
half a century

Remember this . . .
Our hallmark inside
a diamond ring
means better value . . .
we guarantee it.



Closed Saturdays
July & August

FRANK H. Adams
JEWELERS • SILVERSMITHS
Corner North Pearl &
Steuben Sts.
Downtown Albany

FREE CUSTOMER PARKING

LaLeche meeting

The Albany Central LaLeche League will meet Thursday, Aug. 12, at 8:15 p.m. at the home of Mrs. Richard Koch, 119 Fairview Ave., Albany. Mrs. Robert Bray will lead a discussion on "The Family and the Breast-fed Baby."

Karate demonstration

Bethlehem Karate Club and Al Cannella, a second-degree black belt, will lead a free karate demonstration sponsored by the Bethlehem Public Library at 8 p.m. Monday.

**COME HEAR
THE NEW '76
SAAB
STORY!!**

**New Salem
Garage** Route
85
New Salem, N.Y.

**CAN'T DECIDE WHO TO
CALL TO DO YOUR ROOF?**



Why not call the company
"where superior workmanship
still means something."

**VANGUARD
ROOFING CO.**

FOR A FREE ESTIMATE
CALL JAMES S. STAATS

767-2712

FULLY INSURED

Birth announced

A second child and first son has been born to Mr. and Mrs. Jack H. Christenson of Ilion. Mrs. Christenson is the former Paula Dorman, daughter of Mr. and Mrs. John L. Dorman of Delmar.

On DAR panel

Mrs. S. Benjamin Myers of Delmar was a member of the judges panel for the annual state history award given by the Daughters of the American Revolution. The 1976 winner was Lisa Minella of Pelham.

Israel student speaks

Kenneth B. Segal, 60 Brockley Dr., Delmar, will be the speaker at the Aug. 12 luncheon meeting of the Retired Mens Fraternity at the Holiday Inn, Rt. 5, Albany. He will talk on "What It's Like Being an American Student in Israel." He will enter the New York University Law School graduate program in tax in September.

'Early bird' worship

Delmar Reformed Church will hold a special 7:30 a.m. "early bird" worship service on the five Sundays in August for its more active parishioners who plan outings or other summer activities that might cause them to miss church. Rev. Gerard Van Heest, pastor of the church at Four Corners, will conduct the services in the chapel in the Education wing.

"We plan an informal service," Rev. Van Heest said. "Golf slacks and sport shirts will not be out of place."

**MOUNTAIN
WORKSHOP**
872-0218

**Picnic tables — State
Park Type. All lengths
& round patio sets.
All sizes, prices start
at \$15. Delivery avail-
able.**

Turbotrains

The first two of seven turbine-powered passenger trains for the New York-Albany-Buffalo corridor are expected to go into service by Aug. 16, according to the State Department of Transportation. The American-built French-designed turboliners are capable of 125-mph speeds on good trackage, but state officials say it will be several years before the tracks on the upstate run can be improved to meet those standards. In all, there will be seven turbotrains in service by the end of this year.

Altamont Fair nearer

Premium books containing entry blanks for Altamont Fair exhibitors have been mailed to more than 1,000 past exhibitors, according to Stu Rombough of the fair association. Rombough expects "a tremendous increase in new exhibits, due in part more than \$20,000 in prize money in a dozen categories."

The 1976 fair opens Aug. 16 with a bicentennial program. A circus royale free grandstand show will be featured daily through Aug. 21.

"WE HAVE A WARM HEART FOR COLD NOSES"
Phone 465-6636



Dogs by Donna

265 Broadway, Rensselaer, N.Y. 12144
Professional Dog Service — 15 Years Experience

BOARDING — country comfort

TRAINING — obedience — protection — attack

GROOMING — all breed styling — clipping — bathing — dipping



Applebee
Funeral Home

Inc.

Jacoba Applebee
Richard Clark
Peter Applebee

403 Kenwood Avenue
Delmar, New York

Our Summer Sale

is still

in progress

at

up to **50% off**

Street Length Dresses, Rainwear, Pantsuits,
Sportswear Separates
Sleepwear, Loungewear, Tennis Dresses

Virginia Lynch

finest feminine fashions

CLOSED SATURDAYS DURING AUGUST



230 Delaware Ave.
Delmar
439-9005
Thurs. 'til 8



40 Maiden Lane
Downtown Albany
434-2013

CUSTOM WOODWORKING SERVICE

HANDMADE ANTIQUE REPRODUCTIONS

Made from Original Plans or Adjusted to
Your Specific Space Requirements.

FURNITURE AND ANTIQUE REPAIRS

Re-gluing, broken parts reproduced.

**BEAMED CEILINGS
VALANCES**

**PINE PANELLING
BOOKCASES**

We can Create a Warm Colonial Atmosphere
in any Room in Your Home.

R. STEPHEN TREADWAY

Phone 439-2836 Days
439-5224 EVES.

FREE ESTIMATES
CHEERFULLY GIVEN

Delmar girl wed

Nancy Isbister, daughter of Mr. and Mrs. John W. Isbister of Delmar, was married to David Wickster, son of Mrs. Elizabeth Wickster and the late Dr. George Z. Wickster, in a garden wedding in Oak Park, Ill., June 19. The bridegroom is a field training officer in the Oak Park Police Dept.



Cadet James B. Brewster

Slingerlands cadet on 'Eagle' crew

Cadet James B. Brewster, son of Mr. and Mrs. Benjamin Brewster Jr., 1719 New Scotland Rd., Slingerlands, participated in "Operation Sail '76" as a crew member aboard the Coast Guard training ship, Eagle.

Aboard the three-masted, square-rigged sailing ship since May, Cadet Brewster crewed as the Eagle raced from Bermuda to Newport, R.I., previous to arriving in New York City for the Bicentennial celebration.

A 1973 graduate of Bethlehem Central High School, Brewster is a member of the

Coast Guard Academy class of 1977.

One of the world's remaining 20 "tall ships," the Eagle led 15 other tall ships in review before a flotilla of 50 modern warships in New York Harbor and partway up the Hudson River on July 4. Among the events included in their four-day stay in New York was a parade in the city, in which Eagle crewmembers and officers joined those of the other tall ships.



COMMUNITY NURSERY SCHOOL of Voorheesville

is accepting 4-year-olds for non-cooperative
openings this Fall

Call: Molly Hedricks
Marie Giantasio

765-4575
765-4711

BEDROOM SET

FLOOR SAMPLE
Regular \$799.00

\$475.00

BURRICK FURNITURE CO.

560 DELAWARE AVE., ALBANY, N.Y. 465-5112



Rev. Frank T. Rhoad

Guest preacher here

Rev. Frank T. Rhoad, pastor emeritus of the Second Presbyterian Church of Amsterdam and now a resident of Delmar, will be the guest preacher at the Delmar Presbyterian Church for the first two Sundays in August. The services will be at 10 a.m.

Paquin campaign gets early start

Guy Paquin, Clarksville businessman running for Albany county clerk on the Democratic ticket, has appointed a full slate of campaign staff members in one of the earliest campaign starts in recent years.

Paquin has named Dennis Ryan campaign manager and Mrs. Shirley Brown press secretary. Others on the staff include Marie DiLello, Paul O'Brien, Paul Oliver, Norman Dent, Russ DuBuc, Marcia Aronowitz and Phil Minnisale.

Tom Hammill has been appointed coordinator for Bethlehem and Herb Reilly Jr. for New Scotland.

Paquin is opposing Paul Cardamone of Albany, the Republicans' youthful nominee, in what could shape up to be one of the most spirited of the races in the November voting.

Firm new member

Dura-Bilt Remodelers, Inc., of Albany, has been elected to membership in the American Institute of Kitchen Dealers. Dura-Bilt designs, plans, and installs complete kitchens from its showrooms at 1980 Central Ave., Albany.

**DEMONSTRATE
NAME BRAND TOYS & GIFTS
FRIENDLY
TOY PARTIES**

No Cash Investment/No Deliveries
No Collecting/ No Experience Necessary
Make Your Own Hours — FUN AND PROFIT
Car Necessary — Call SUSAN KNIGHT
Now/489-8395 — Also Booking Parties

closer than you think... more
spectacular than you imagine

Enjoy all this and more at
breathtaking Ausable
Chasm . . .

- Cafeteria & Gift Shop
- KOA Kampground
- Famous boatrie
- New Pottery
& Clock Shop
- Glass Blower's Shop
- Antique Auto Museum

For free brochure, write:

**AUSABLE
CHASM**

Ausable Chasm, N.Y. 12911 CD
Route 9 or Northway Exit 34



Open
Thru Oct. 11
Phone: 518/436-8456

SHOWROOMS FACTORY

Millbrook Kitchens

CUSTOM BUILT CABINETS
AT FACTORY-DIRECT PRICES

OPEN HOUSE
SAT. 9-5 SUN. 1-5

- IDEAS • DESIGNS
- MANUFACTURE
- INSTALLATION

Tell us what you need. We do the complete job, or any part of it.
Custom modifications to fit your home

SAVE!
Ask About SPECIAL FACTORY DISCOUNTS For Residents of the Capital District

EXCLUSIVE WOOD CABINETS

- 30 Finishes
- 25 Styles
- Birch
- Oak
- Cherry

CUSTOM FORMICA CABINETS

- 2 Decorator Door Styles
- 25 Solid Colors
- Exclusive "Suede"
- Custom Woodgrains

• "Carved" Trim Available

SHOWROOMS FACTORY

Millbrook Kitchens

CALL COLLECT 518-766-3033
Rt. 20, Nassau, N.Y.

FACTORY BRANCH — MIDSTATE KITCHENS, TROY, N.Y.

BETHLEHEM PRESCHOOL ANNOUNCES

NEW LOCATION* — Former Bethlehem Center School
bldg. — Rt. 9W, Glenmont

EXPANDED FACILITIES — EXTENDED HOURS
Day Care now 7 a.m.-5:30 p.m. Mon.-Fri.
Nursery School 9:30-12 — Minimum 2 days/wk.
FULLY CERTIFIED PRIVATE KINDERGARTEN
9:30-12

Serving Children ages 3-6

*Moving August 16

439-7770

Pre-school moves to new location

Bethlehem Preschool will move into new quarters at the Bethlehem Center school on Aug. 16. The school, owned and directed by Mrs. Pat Swanson of Slingerlands and Mrs. Eleanor Howell of Elsmere, has been in temporary accommodations at the Slingerlands Community Church since it opened last year.

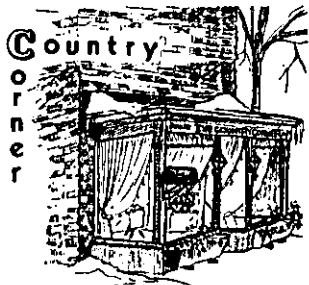
The old school building at Bethlehem Center has been extensively redecorated inside in bright primary colors. The move, which will raise the school's capacity to 100, will enable the directors to add a kindergarten class. The school operates 52 weeks a year from 7 a.m. to 5:30, primarily to accommodate working mothers.

Cooperative playschool

Hamagrael Playschool in Delmar is accepting registrations for the 1976-77 school year opening Sept. 14. The school, now more than 20 years old, is a cooperative in which parents take turns assisting the teacher one morning every three or four weeks, thus minimizing tuition costs and providing young mothers with learning experience. School hours are Tuesday through Friday from 9:15 to 11:45 a.m. Enrollment is limited to 14 children ages 3-1/2 to 5. For information call Norma Kirkman, 439-7521.

Builders' outing

Albany Area Builders Assn. expects 450 at the annual outing Aug. 11 at Lanthier's Grove, Latham.



**ANTIQUES —
COLLECTIBLES**

*As usual —
the unusual
at*

The Country Corner

449 DELAWARE AVE., DELMAR — 439-6671
NEW HOURS: Friday Evenings till 9, Daily 10-5:30
"NEVER ON SUNDAY"

PLEASANT VALLEY GALLERY & GIFTS

The fascinating place to find perfect wedding and shower gifts — a fantastic selection of crystal, china and pottery.

Custom made engagement rings and wedding bands
Complete bridal registry.

DAILY 10-8

872-2041

Coming from Voorheesville, up hill on Rt. 156, second left after Highland Farms Restaurant, second farm on right



NOW EXCLUSIVE DEALER
COMPLETE LINE OF
KYANIZE PAINT



VOGEL WALLCOVERINGS

YOUR DISCOUNT WALLPAPER CENTER
406 KENWOOD AVE.
DELMAR, N.Y. **439-6335**

• WALL-TEX • IMPERIAL • STRAHAN • SCHUMACHER



Jim Callahan

Tomboys honor veteran umpire

They were throwing things at the umpire Friday night at the Bethlehem Tomboys' picnic at Picards' Grove... Jim Callahan, the ump in question, needn't duck, however. Compliments and verbal bouquets were flying his way as players and their families thanked him for the hours of volunteer time he has given them.

Employed full-time in the mail room of Albany Medical College, Callahan never misses a Tomboys' game. The East Greenbush resident is always accompanied to the games by his Number One Fan, wife Arlene.

Baseball is second in his life only to his family. Ever since he missed out on a career on the diamond due to a football injury Jim has been working as an umpire, more often than not as a volunteer, for the past 45 years.

ANSWERING SERVICE

BUSINESS & PROFESSIONAL

Telephone Exchange
24 hours a day

CALL
439-4981

Pennsylvania PEACHES



2 miles W. Voorheesville
on Rt. 156 • Phone 765-2956

Baked Goods, Cider, Cheese
and Other Goodies

9-5 WEEKDAYS
10-5 SUNDAYS

SUMMER CLEARANCE

Volare

The new small wagon from Plymouth.



GOOD SELECTION — YEAR-END PRICES



MARSHALL'S GARAGE

ROUTE 9W, RAVENA, N.Y. — 756-6161
Mon.-Thurs. 8 a.m.-9 p.m.; Fri.-Sat. 8 a.m.-6 p.m.

Practice starts for Pop Warner

The football season started this week in Delmar when smooth-checked aspirants for the town's two Pop Warner teams began practice. Head Coach Bob Verstandig has been directing daily drills at Hamagrael School for candidates for the junior midget and midget elevens that will play in the county league this fall.

There is still time for late registrants to get into the act. Boys 10-13 who wish to play organized football are welcome at Hamagrael in T-shirts, shorts and sneakers, and can register anytime up to early September. The league season starts in mid-September.

Outing for GOP

Bethlehem Republicans will gather at Murray-Jennex Sunset Park for the 17th annual GOP steak roast on Wednesday, Aug. 18. Door prizes, athletic events and a guaranteed good time have been scheduled. Tickets this year are \$13.50 and can be obtained from any member of the committee or ticket chairman Merwyn K. Atwood, 439-5720. Proceeds support all GOP activities in the town of Bethlehem including support for local, county, and state candidates.

Prevent RUST on new cars. Stop RUST on old cars. With our system, we RUST PROOF complete under carriage, inside doors, inside rocker panels, inside trunk. **Appointment only.**

JOE KELLER'S MOBIL

 Sam's RESTAURANT 125 Southern Blvd. Albany 463-3433	VEAL Parmigiana, Scallopi or Peppers Salad bar, spagh. or veg. & potato \$4.99	MON., WED., THURS. ONLY STUFFED SHELLS SALAD BAR \$3.49
---	---	--

"ONE COPY OR A THOUSAND"

**FEATURING — XEROX
7000 REDUCTION
DUPLICATOR**

**DELMAR
Copy Center**
 Div. of CCI Co.
 Open: 8:30-5:00

For: Reduction-Automatic Collation
 Bulk Orders
 Print On To: Letterhead, Transparencies,
 Colored Paper, Address Labels

***TYPING SERVICE ALSO AVAILABLE**
 121 ADAMS ST., DELMAR, N.Y. 12054 — (518) 439-3026

**SIDEWALK SALE
AUGUST 14th**

DELMAR BOOTERY
 376 Delaware Ave. — 439-1717
 DISCONTINUED STYLES, ALL MEN'S WOMEN'S & CHILDREN'S SHOES
 Also: Repair Work Being Done, as usual

Village Transportation Co.

Owner and Operator of
 L.C. SMITH TRANSPORTATION, INC.

CHARTER TRIPS

and School Buses for all occasions.
BUSES — 8 to 41 PASSENGERS
 439-2315

154-B DELAWARE AVENUE • ELSMERE

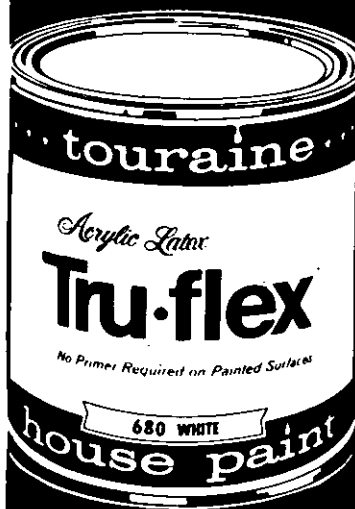
*slimline
fashions*

**FINAL
REDUCTION**
 of our
 Summer Clothes

Visit our **NEW LOCATION** —
 Kimberly Square, Loudonville
 OPEN MONDAY-SATURDAY 10-5
 THURSDAY & FRIDAY EVENINGS TO 8:30
 Located on Shaker Rd. above Osborne, opposite the Firehouse
PHONE 458-7064

**NOW'S THE TIME
TO SAY YES
TO OUR
CLEARANCE DEAL**

Whitest White



Colors
stay bright

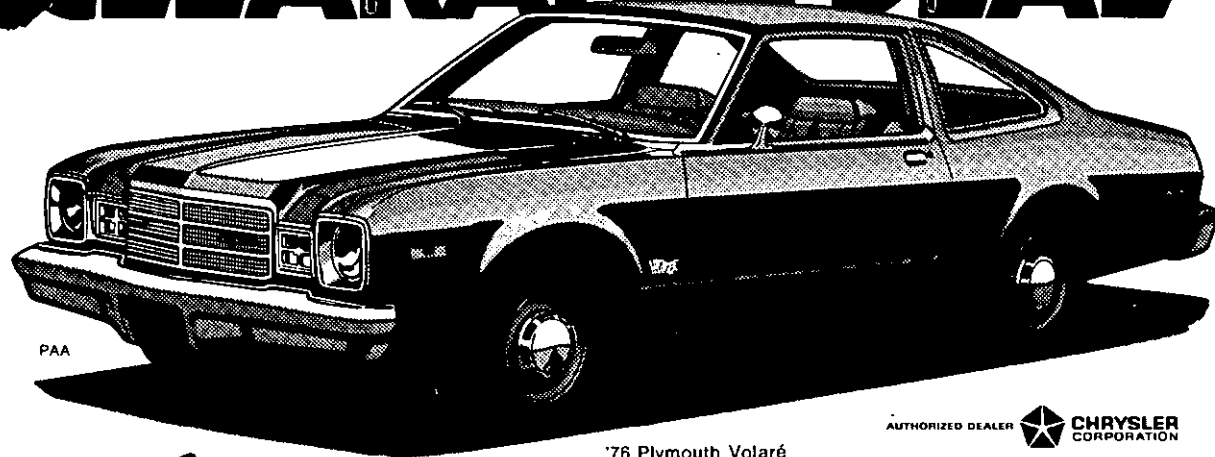
**TOURAINÉ
OUTSIDE
TRU-FLEX**

Reg. \$12.45 gal.

\$9.95 gal.
in case lots



PAINT, WALLPAPER, AND
FLOOR COVERING
278 Delaware Ave.
439-4468 — 439-4751



'76 Plymouth Volaré
2-Door Coupe

AUTHORIZED DEALER  CHRYSLER CORPORATION

Volaré

\$3506

During clearance time, Motor Trend Magazine's
"Car of the Year" may be the "Bargain of the Year."



CHRYSLER

Plymouth

CEDAR HILL GARAGE

Route 144 — 767-3069 — Selkirk, N.Y.

Virginia Lynch

finest feminine fashions

CLOSED SATURDAYS DURING AUGUST

230 Delaware Ave.
Delmar
439-9005

40 Maiden Lane
Downtown Albany
434-2013

TACO J's

"A LITTLE TASTE OF MEXICO"

Meat & Meatless Dishes Prepared California Style — Not Too Hot — Not Too Spicy



677 New Scotland Ave. Albany
(Opp. St. Peters Hosp. 438-7073)
Tues., Wed., Thurs. 11-8
Fri., Sat. 11-9. Sun. 3-8

'78 Shoppers Village, Menands
465-7743
Wed.-Sat. 11:30-9:30
Sun. 11:30-6

**The PAPER MILL
The PAPER MILL
The PAPER MILL
The PAPER MILL
The PAPER MILL
The PAPER MILL**

**We have a new copier
come in and try it**

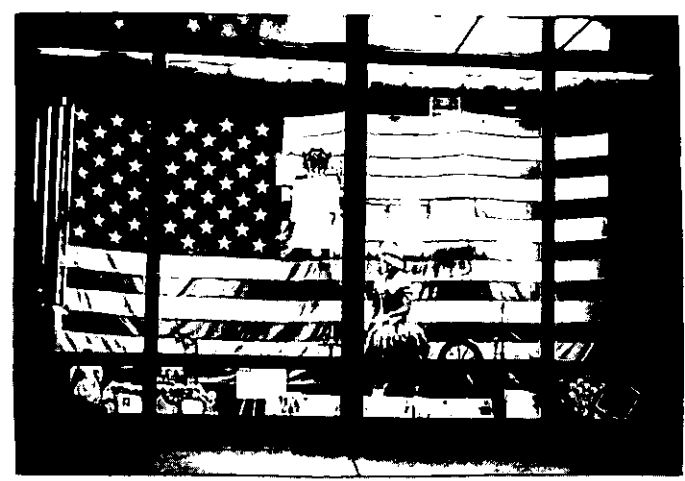
**The PAPER MILL
The PAPER MILL
The PAPER MILL
The PAPER MILL**



the PAPER MILL

DELAWARE PLAZA

OPEN Mon - Fri 9-9.
Sat till 6 • 439-6888



J. W. Campbell

Artifacts loaned by Tri-Village Chapter of America Assn. of Retired People form an attractive bicentennial display in Mullens Pharmacy window in Elsmere. Mrs. William G. Reuter is AARP bicentennial chairman.



SUBMARINES THE CENTER INN

& SPORTSKELLER
Rt. 9W, Glenmont — 439-2323

DELAWARE IMPORTS

579 DELAWARE AVE., Corner Mereline Ave., Albany, N.Y.

Everyday specials on BUDWEISER & MILLER'S
less than \$6.40/case

**ITALIAN SAUSAGE — Hot & Sweet
FETA CHEESE & FILO PASTRY LEAVES**

STORE HOURS:
Daily 9-7
Sunday 9-1

465-3762

Tool's

Breakfast, Lunches, Dinners
at Attractive Family Prices

RESTAURANT

283 Delaware Ave.
Delmar, N.Y. 439-9111

Open 7 Days a Week —
Weekdays 7 A.M.-8 P.M.
Sundays 8 A.M.-8 P.M.

**NO FINER FOOD SERVED ANYWHERE
GOOD COCKTAILS, TOO!**

Girl Scout camp

A special one-week session of day camp, with bus service from Latham, Colonie, Loudonville and Bethlehem as well as part of Albany, has been added to the Hudson Valley Girl Scout Council schedule. The session will begin Monday at Camp Is-Sho-Da in East Greenbush. Girl Scouts and non-Scouts may obtain information or register by calling the Hudson Valley Council in Delmar, 439-4936.

ED BERGMANN
50A Delaware Ave.
Delmar
482-8771



**"LIFE insurance, too!
Call me for details."**

 Like a good neighbor,
State Farm is there.
State Farm Life
and Accident Assurance Company
Home Office: Bloomington, Illinois

Beauty Nook Salon
performs
*Excellence in all phases of
Hair Coloring*

372 Delaware Ave., Albany — 434-4831

SPORTS

Dolfin swimmers collecting medals

Delmar's talented Dolfins came home from the second annual Marlboro invitational swim meet with a carload of medals and ribbons, including 10 golds and 10 silvers. Robin Neff won three gold medals, Janet Shaffer had a gold, silver and bronze, Ken Neff two golds and Douglas Shultz a gold and two silvers.

Robin, Janet and Douglas did their damage in the 9-10 age group. Robin won the 50-yard freestyle, 50-yard backstroke and 100-yard in-

Two of the best cars in the world



VW RABBIT
under \$3500



BMW 530
The ultimate driving machine

Come in and test drive both

Capital Cities Imported Cars, Inc.



Rt. 9W,
Glenmont, N.Y.

463-3141

Where Service Counts — 5 minutes from downtown Albany
AUTHORIZED VOLKSWAGEN AND BMW DEALER
SALES — SERVICE — PARTS



Stulmaker's Ltd.



for
quality
and
fashion in
men's wear

Made-to-Measure Shirts
Your clothing fitted by our
master tailor

8 JAMES STREET, off State St.
ALBANY, NEW YORK

436-1142

BankAmericard Master Charge

A MAJOR ANNOUNCEMENT...

FIRST IN THE ALBANY AREA

Marshall W. Tebbutt's Sons, Inc.—Funeral Directors

**introduce two major services which combine
dignity with economy in the Tebbutt Tradition**

THE CENTURY I PLAN™
For Cremation

A radically new concept pioneered by the Century Plans, Inc., eliminates the purchase of a casket while preserving the dignity and essential features you need. **\$785.**

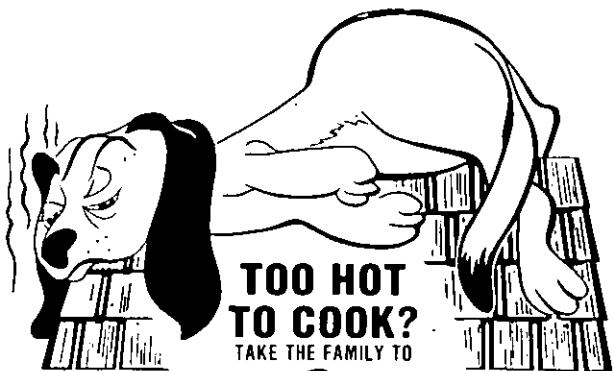
THE CENTURY II PLAN™
For Burial

A second innovative concept pioneered by the Century Plans, Inc. to provide a major breakthrough in the traditional cost of funerals while preserving the dignity and essential features. **\$785.**

May we send you our new booklet on The Century Plans which fully describe these services? Please call or write now. You're wise to know about these major new concepts...for that moment when you'll have to.

Marshall W. Tebbutt's Sons, Inc.
FUNERAL DIRECTORS
© 1976, Century Plans, Inc.

633 CENTRAL AVENUE, ALBANY, N. Y. 12206/420 KENWOOD AVENUE, DELMAR, N. Y. 12054 TELEPHONE (518) 489-4451



La Casa

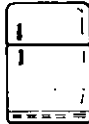
RESTAURANT

PARTY — BANQUETS — BUSINESS MEETINGS
 Open 7 Days a Week 11:30 A.M. to 10:00 P.M. — bar till 11 P.M.
 LIVE ENTERTAINMENT — Friday & Saturday Evenings
 THATCHER ST., SELKIRK ALL LEGAL BEVERAGES 767-9045

Need A Loan For



This Thing?



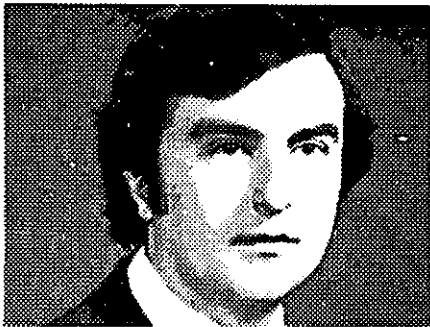
That Thing?



Any Thing?



Call Walter Cuff
 for an
 "Anything" Loan.



Walter Cuff is Manager of our Glenmont Office.



445-1371

COMMUNITY
 STATE BANK

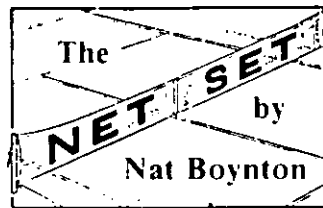
People Are Our Business.

Now with seven offices at 50 State St. and 567 New Scotland Ave. in Albany; 224 State St. and 1815 State St. in Schenectady; 2695 Hamburg St. in Rotterdam; 146 Columbia Turnpike in East Greenbush Rts. 9W & 32, Town Squire Shopping Center in Glenmont.

Member F.D.I.C. — Financial General Bank Shares Inc.

dividual medley and anchored the first-place Delmar 200-yard freestyle relay. Janet swam a leg on that relay, won the 50-yard breaststroke, was second in the 50 free and third in the 100 IM. Douglas won the 100 individual medley, placed No. 2 in the backstroke and breaststroke sprints and swam on the winning 200-yard freestyle relay foursome.

Ken Neff won the 100 free and 100 backstroke in the senior boys division. Other gold medalists were Jessica Follett in the girls' 14 diving, Becky Friedlander and Kathleen Henahan with Janet and Robin on the girls' 9-10 relay, and Scott Apicelli, Matt Holland and David Young on the 9-10 boys' relay.



In keeping with their own professional quality in tennis club management, the proprietors of the Tri-City Racquet Club announced the opening of their new outdoor complex

Dowerskill Village

Bethlehem's
 Newest Community
 is now OPEN

2, 3, 4 Bedroom
 Townhouses
 plus

7 Single Family
 Home Plans

PRICED FROM \$36,900
 WITH 5%
 DOWN PAYMENT.

Call the Dowerskill
 Village Sales Office
 for information &
 directions—

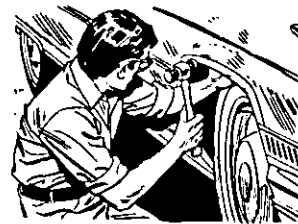
767-2278

OPEN DAILY AT
 12 NOON

Exclusive Sales Agents



This is not an offering which
 can be made only by a formal
 prospectus.



J.S. HAM — CB and AUTO PARTS

Good Prices — Good Hours
 Open Evenings — 6:30 P.M. till?

767-9779

767-9564

314 MAPLE AVE., SELKIRK

J. SLACK

with a full-fledged press conference last week. Sandy Bookstein and Lee Aronowitz laid on a tennis demonstration on their four mint-condition Har-Tru courts and a buffet reception for the newshawks.

The Knickerbocker News and Troy Times Record were there, along with the scarred old Spotlight scribe, and Channel 6 turned up with a reporter-cameraman team. Lee missed it because he was playing that other summer game, the one with sticks and that funny little ball, with Howard Nolan, but Sandy handled the TV articulation and the MC chore with ease.

The courts are magnificent, adding one more facility to the area's growing list of new tennis playpens. There will be two more next spring.

Meanwhile work progresses on Southwood's new annex and Capitaland's eight-court shed, which is rising in record

Young adult estate plan

If you're 15 to 22 years old, you can start your life insurance program with \$10,000 in term insurance for just \$49.00 a year! When you're 25, your policy converts to permanent insurance at rates you'll be able to afford. It's called Nationwide's "Young Adult Estate Plan", and it's worth checking into. Call:

TED WERE

Local Representative

465-8937

OFFICE —

416 Delaware Ave.
Albany, N.Y.



NATIONWIDE INSURANCE

Nationwide is on your side

Nationwide Life Insurance Company
Home Office: Columbus, Ohio



20'x24' GARAGE

includes:

- Footing • Slab
- Board Siding
- 2x4 16" on center
- 2x8 Headers
- 2x6 Roof Rafters
- 1/2" plywood for roof
- 1 service door
- 2 overhead doors
- 240 lb. shingles
- 1 window

SPECIAL \$2895⁰⁰

ALL WORK INSURED & GUARANTEED

NORTH COUNTRY BUILDING CORP.

COMPLETE HOME ADDITIONS, GARAGES, DORMERS, COMPLETE SHELLS, BASEMENTS FINISHED

869-7058

BOX 5374
ALBANY, N.Y. 12205

FASHION LEADERS FOR OVER 40 YEARS

MISSES

SIZES
ON OUR
FIRST FLOOR
SIZES 6 to 20

Dunbar's
Ladies Fashions
317 State Street
DOWNTOWN SCHENECTADY

TALL
GIRL SIZES

ON OUR
SECOND FLOOR
SIZES 10 to 24

OPEN THURSDAY NIGHTS til 9

SCHRAFFT'S GIVES ALBANY BUSINESSMEN A GREAT BREAK!

Daily Luncheon Specials

Served 11 a.m. til 2 p.m.

\$1.76

including Salad Bar

Plus Our Weekly Specials

Friday: Fried Haddock Dinner \$3.76

Sunday: Buffet Brunch ^{11 am}/_{2 pm} \$3.76

JOIN YOUR FRIENDS FOR LUNCH AT

SCHRAFFT'S

ALBANY MOTOR INN

Rte. 9W, Southern Blvd.
Albany, New York 465-8811



CAROUSEL



RHUM RUNNERS LOUNGE

adjacent to

HOWARD JOHNSON'S

RT. 9W at THRUWAY EXIT 23

465-9130

FEATURING LIVE ENTERTAINMENT
MONDAY THRU SATURDAY EVENINGS

Starting Monday — CAROUSEL

DELMAR'S ONLY

1-STOP CLEANING CENTER

POUND DRY
CLEANING

PROFESSIONAL
DRY CLEANING

OPEN 7 DAYS A WEEK

- Coin operated laundry
- Double & triple load washers
- Additional Parking & Entrance in Rear
- Spotless Facility
- Suede Specialists
- Attendant always on hand



FABRIC CARE CENTER WASH & DRY CLEAN

Delaware Plaza, Delmar

speed on Rt. 155 in Guilderland. Next will be the new hard-surface layouts at Elm Ave. Park in Delmar and the New Scotland town park on Swift Rd.

* * * *

On the tournament scene: Schenectady Racquet Club is hosting an Eastern Tennis Assn. sanctioned junior girls tournament this weekend, starting Friday. If anyone wants to see the caliber of Long Island, New Jersey, Westchester and upstate girls who spend the summer in disciplined competition playing for Eastern rankings in four age divisions, stop over on Curry Rd. at Thruway Exit 25 and get an eyeful.

Just to give you an idea: early entries include Susan Hartsell of Rochester, ranked 13th in the East in girls 14 and under, Marian Gengler, ranked 12th in the same category and sister of Margie Gengler, who captained Princeton's undefeated team a year ago before marrying Stan Smith of Wimbledon fame, and Sandy

Fleischmann of Sag Harbor, L.I., No. 8 in girls' 16 who has played here previously. One of the features should be Chrissie Stearns, an 11-year-old protege from Glens Falls whose father, Stu Stearns, is the pro at Glens Falls-Queensbury and well known to Delmar players.

The Troy Open will also be on next weekend, finishing up in that wonderful new complex at Prospect Park so comfortable for spectators as well as players.

Tennis Shorts: Cathy Vedder-Joanna Merritt, who are expected to play in the Bethlehem Open next month, have won two women's doubles titles — the Guilderland Open and Burnt Hills Open . . . Gene and Tom Gould also may come here seeking fresh blood after winning at Burnt Hills and the Troy Closed . . . Larry Linett, 16-year-old Albany County singles champion and top local scholastic star, has become a tennis columnist for the Knick News, a hopeful sign the Albany papers will start covering local tennis.



Natural / creative
photographs of:
Individuals / groups / children
Commercial and
industrial subjects
Fashion models
Sports events
Weddings

Box 147, R.D. 3,
Selkirk, New York

(518) 767-9798

THE FRAMESHOP

43 South Main St., Voorheesville — 765-4587

To Serve Your Custom Picture Framing Needs

NOW OFFERING **30% OFF** ON OUR
Complete Selection of Wood and Metal **FRAMES**

STOP BY FOR A VISIT

Mon.-Fri. 9 a.m.-4 p.m.; Sat. 9 a.m.-12 p.m.; Thurs. evenings 6-9 p.m.

BETHLEHEM BABE RUTH

Final Standings

	W	L
Blue Cross	9	3
Chamber Commerce	8	4
Nat'l. Savings	7	5
General Electric	7	5
PBA	5	7
VFW	4	8
Main Care	2	10

BETHLEHEM TOMBOYS

Final Standings

Majors	W	L
Metro. Bus. Mach.	14	2
CYC	9	7
Eden Park	6	10
Atlantic Cement	3	13
Intermediates		
P.B.A.	12	4
Farm Family	9	6
Riccardo Studio	8	7
G.E. Plastics	7	9
John Germann Ent.	3	13
Minors		
Beth. Masonic Lodge	9	3

Mead's Corner Inn	8	4
Union Nat'l. Bank	8	4
B.P. Wood Plumb.	6	6
Keller's Mobil	6	6
Kiwanis	3	9
Denby's	1	11

TRI-VILLAGE LITTLE LEAGUE Final Standings MAJOR LEAGUE

National	W	L	T
Roberts Realty	12	4	0
Mullens	9	6	1
Main Care	8	8	0
Bennetts	7	8	1
Meyers Funeral	5	9	1
Spotlight	1	14	1
American			
	W	L	T
Kiwanis	15	1	0
Farm Family	8	5	3
CYC	8	7	1
Price Greenleaf	8	7	1

GOING BACK TO COLLEGE?

See John G. Myers Travel Centers for air, rail, or bus

37 North Pearl St.
Albany, New York
434-4131



210 Delaware Ave.
Delmar, New York
439-7671

*There's an extra dimension
to home nursing.
It's important.
We provide it.*

Skill and
experience are
basic requirements.

So is intrinsic
understanding of a
patient's needs—and yours.
It's often missing.

But not with our RN-supervised
nurses. They've got it—or we won't
send them to your home.
24-hour service.

MEDICAL PERSONNEL POOL

90 State St., Albany
463-2171



AUGUST SPECIAL

20% off

All Permanent Waves

MONDAYS THRU SATURDAYS

JOHN'S NORMANSIDE BEAUTY SALON

99 Delaware Ave., Elsmere — 439-5621
— ALSO OPEN TUES., WED., THURS., FRIDAY NIGHTS —

THE MONTESSORI SCHOOL OF ALBANY

Chartered in 1965 by the Board of Regents

Teachers Certified By:

THE AMERICAN MONTESSORI SOCIETY
THE ASSOCIATION MONTESSORI INTERNATIONALE
THE MONTESSORI APPROACH TO EDUCATION
For Children 2 yrs. 9 months to 6 years

Relocated to:
W. Lawrence & Morris St. 482-1628 or if no answer
Albany, N.Y. 482-9238

FINAL CLEARANCE

UP TO 20% OFF

ALL WOMEN'S SHOES

VALUES UP TO \$40.00

- WILBUR COON
- DR. LOCKE
- SCHOLLS

ALL SALES FINAL on Summer Merchandise

T. Arthur Cohen

33 MAIDEN LANE
ALBANY, N.Y.

463-4518



MEYERS FUNERAL HOME



439-5560

Opposite High School

DELMAR, N.Y.



Bartke's
King of Steaks

AUGUST SPECIALS

ROUTE 9W RAVENA, N. Y.
TELEPHONE 756-2241

Family Sirloin for two _____ **\$11.95**
Fresh Blue Fish _____ **\$3.95**

Relish tray at your table, crackers and crock of cheese, garden salad — choice of dressings, choice of potato, 2 vegetables, family style, fresh baked rolls and butter, coffee or tea.

Two rooms available for banquets, weddings, parties, receptions.

INSTALL THE **Carrier** Comfort Combo

... HEATING SYSTEMS
... AIR CONDITIONING
... HUMIDIFICATION
... ELECTRONIC AIR
CLEANERS



318 Delaware Ave.
Delmar
439-7605

McCarrolls..... 6 9 1
Gen. Elec. 3 12 1

INTERMEDIATE

National

Bennetts 13 1 2
Meyers Bike..... 12 1 3
Roberts Realty 9 5 2
Main Care 3 9 3
Spotlight 3 10 3
Mullens 2 12 2

American

McCarrolls..... 13 3 0
Farm Family 11 4 1
Price Greenleaf 9 7 0
CYC 5 10 1
Gen. Electric 5 11 0
Kiwanis 4 10 2

WHEELER HOMES

National

Giants 15 1 1
Cubs 9 7 2
Dodgers 7 8 2
Pirates 6 10 2
Mets 2 12 4

American

Braves 13 2 3
Orioles 11 1 6
Yankees 6 11 1
Cards 5 13 0
Indians 4 11 2

C. B. CLARKE, INC. FOR INSURANCE CALL



Burt Anthony

Homeowner policies can help you or hurt you depending on how well they are set up. We will review yours free — just stop in with your policy, or call

439-9958



339 Delaware Ave.
Delmar



THE
SCISSOR
SOCIETY

2 normanskill boulevard
delmar new york 12054
439-8171

Contemporary Hairstyling for Men and Women

- Precision Hair Cutting
- Blow Styling
- Body Perms.
- Haircoloring
- Frosts

9-6 Tues.-Fri.; 9-5 Saturdays — by Appointment

CLASSIFIEDS

Classified Ads are 15¢ per word (\$1.50 minimum) payable in advance before 4 p.m. Friday for following Thursday publication.

Come in person or mail your ad with check or money order to
414 Kenwood Ave., Delmar.

439-4949

439-4949

APPLIANCES

Bob Sowers' DELMAR APPLIANCE

Complete Line of
RCA Victor — Whirlpool

SALES & SERVICE
239 Delaware Ave., Delmar
Phone 439-6723

VAN DYKE'S NORTHEAST. GE
Major Appliances and TV, Zenith
TV & Stereos. 243 Delaware Ave.,
Delmar. 439-6203. tf

BLACKTOP

**FREE ESTIMATES FOR
BLACKTOP**
NEW JOBS OR REPAIRS
PENETRATION AND CONCRETE WORK
ALSO STONE & SEALER
QUALITY PAVERS
S. LAMBERT JR.
767-9118 or 767-2488

AREA BLACKTOP PAVING

(we specialize in the homeowner)
Driveways, Walks, Floors,
Parking Lots, etc.
Quick Service Fully Insured
459-5873 — Free Estimates

"Our Prices Are Reasonable" LIUZZI BROS. Blacktop Specialists

Residential, Commercial,
Industrial — Fully Insured
Free estimates — **869-6973**
Also Gilsonite or
Jennite, J-16 Sealer
SATISFIED CUSTOMERS ARE
OUR BEST RECOMMENDATIONS

**Is Your Ad In the
NEW Spotlight?
Call 439-4949**

HOMEOWNERS

Protect New or Old Blacktop
Jennite, J-16 & Latex-ite Sealers
ALSO Driveway Repairs
Free Estimates/Fast Service
**METROLAND SEALING
COMPANY**
489-6875

CARPENTRY

Quality Construction

ALL TYPES BUILDING
REMODELING & REPAIRS
REASONABLE PRICES
FINE CRAFTSMANSHIP
FREE ESTIMATES
768-2341

Frank Pomakoy General Carpentry

Repairs, Remodeling, Roofing,
Ext. Painting, Additions,
Kitchens, Bathrooms, Paneling,
Playrooms, Ceilings,
Floors.
Free Estimates **767-9460**

CARPET CLEANING

PEOPLE every day clean carpets
the easy way with Blue Lustre. Rent
electric shampooer. Adams Hard-
ware, 380 Delaware Ave., 439-1866.

WE CLEAN wall to wall carpeting
professionally. **VINCE'S FLOOR-
COVERING**, 731-6100. 4t85

DRAPERIES

CUSTOM DRAPERIES
Shop at home. Large fabric
selection. Bedroom ensem-
bles for that personal touch
Call Barbara 872-0897

Furniture Refinished

EXPERT FURNITURE refinishing.
Draperies made to order. Also antiques
for sale. Phone 766-4664.

FURNITURE STRIPPING, refinish-
ing & repair work. Free local pickup
& delivery. 439-0300. tf

**ANTIQUE OR MODERN
FURNITURE
REPAIR SERVICE**
Repairing — Refinishing
Telephone 439-7700 If no Call
answer 439-1800
154 Delaware Ave., Elsmere

FLOOR COVERING

Complete line of Armstrong carpet-
ing and vinyl floors. 439-4751, 439-
4468. tf

CARPET TILE & VINYL FLOORS

Shop At Home — Custom Measured
& Installed — Top Quality —
Priced Right — Free Estimates
Quality Construction **768-2341**

EXPERT CARPET CLEANING

Restore beauty to your wall-to-wall
carpeting, scrubbing combined with
steam cleaning for best results. Fully
experienced, free estimates.
Call Craig Lindell after 6 p.m. —
439-7221

CHILD CARE

LOVELY COUNTRY HOME, 24 hour
service, 50¢/hour, 767-9537.

MOTORCYCLES

**YAMAHA • TRIUMPH
MOTORCYCLES**
Sales & Service
Parts & Accessories
DAVE FLACK
Rt 9W, Ravena • 756-2900

C & C CYCLE SHOP

154 Delaware Ave.
L.C. Smith Building
Complete line of Motorcycle
Parts, Accessories. Service
439-6642

MASON WORK

ALL TYPES MASONRY

NEW — REPAIRS
26 Years Experience
Chimneys, Fireplaces, Stoops, Walks,
foundation repairs & waterproofing etc.
PROFESSIONAL WORK WITH INTEGRITY
Serving this Community for years with
Pride — Satisfaction Guaranteed
F. JOSEPH GUIDARA —
439-1763 — Evenings

AREA MASONRY

Specialize concrete work, addi-
tions, floors, patio, walks, founda-
tions. All types of repairs — Chim-
neys, stucco, slate, waterproofing,
etc. Free estimate

459-5873

MASONS, INC.

QUALITY MASONRY

Plastering
Walks and Patios, etc.
"Now is the time to repair that
Chimney"

A. LOUX 439-3434
R. TICE 456-7848

INTERIOR DECORATING

KECK'S DRAPERY CO.

Custom Draperies,
Slip Covers, bedspreads.
Large Fabric Selection
Attractive Prices . . .
Home Service
Call **JOAN KEMMER 459-4167**

DELMAR DECORATORS

**NO OVERHEAD
SAVE UP TO 20%**
Slipcovers, Draperies, Table Pads,
Upholstery, Bedspreads,
Carpeting, Wood & Cloth Shades
FREE Shop-at-Home Service
Delmar, N.Y. — **439-4130**

MOVERS

D.L. MOVERS, Inc. 439-5210. Local
and long distance, no job too small.

DAN DONNELLY MOVING and trucking. Delivery service. Free estimates. 767-2711.

Painting & Paperhanging

VOGEL
PAINTING CONTRACTOR
Interiors — Exteriors
PAPERHANGING
COMMERCIAL SPRAYING
 Free Estimates — Guaranteed
INSURED 439-7922

THREE TEACHERS
REASONABLE
 Interior/Exterior
 Free Estimates — Insured
374-8858

QUALITY
PAINTING CONTRACTOR
 Paperhanging
 Interior Exterior

REMODELING — Interior Paneling
 Free estimates Fully Insured
 Guaranteed
BOB or ED VOGEL
439-2503 482-6370

ROGER SMITH

PAINT, WALLPAPER, AND FLOOR COVERING
 278 Delaware Ave.
439-4468 — 439-4751

DON VOGEL Painting Contractor — exterior, interior, paperhanging, repairs, 20 years experience. 489-0989, 489-7914. tf

PAINTING, PAPERHANGING, Roofing — experienced college student. Call Pat 768-2800. 21812

PERMANENT WAVING

SPECIALIZING IN Breck, Realistic Rayette and Caryl Richards permanents, hair tinting and bleaching. Mele's Beauty Salon. Plaza Shopping Center. 439-4411

PLUMBING

B. P. WOOD
Plumbing & Heating
 24 Hour Service
Phone 439-9454

PLUMBING & HEATING
ABLE, HONEST — I do plumbing, heating, bath & kitchen remodeling. Free est. Low prices. 465-4078, if no ans 235-5394

HORSES BOARDED

TORCHY'S TACK SHOP
 Jericho Md., Selkirk
RO 7-2701 • RO 7-2468
 Mon.-Sat. 9-9
 Boarding & Training Stables
 Riding Supplies & Saddles
 Lessons • Indoor Arena

JOSEPH'S TROUBADOUR STABLES, riding lessons, pony rides. Training. Rt. 9W 767-9537.

GLORY HORSE FARM — Western Horsemanship Lessons, \$6.00/hr. Complete Care Boarding, \$67.50/TURNOUT, \$87.50/STALL. Breeding, \$100.00/Stud Fee. 765-2875.

SEPTIC TANK SERVICE

NORMANSKILL SEPTIC TANK Cleaners. We install dry wells, septic tanks, drain fields. 767-9287.

DELMAR SANITARY Cleaners. service Tri-Village Area, over 20 years. 768-2904.

ROOFING

ROOFING

 Serving the Bethlehem Community for years.
VANGUARD ROOFING CO.
 Where Superior Workmanship Still Means Something!
 Call **JAMES S. STAATS** for a free estimate — **767-2712**
 Fully Insured

HELBO ROOFING

74 BASSETT ST., ALBANY
All Kinds of Repairs & Slate Repairs, Ice Slides
465-2513 Free Est.

For A FREE Estimate On

A NEW ROOF
Cyrus Shelhamer Roofing

- SNOW SLIDES
- GUTTERS
- TRAILER ROOFS

INSURED
REFERENCES
767-2334

ROOFING

21 Years Experience
 Guaranteed — Insured
DAVE TUCKER
872-1373 756-2952

ROOFING



Asphalt. Slate. Built-up. Wood Shingle. Gutters. Ice Slides. Repairs. Insured. Guaranteed.

FREE ESTIMATES
VANCANS
439-3541

ROOM WITH BOARD

Parents boarded: lovely country home. Visit with them anytime 767-9537. tf

RESTORATION

INVISIBLE REPAIR — Furniture, Antiques, Fine Porcelain, Statues, Figurines, Oil Paintings, Glassware, Metalware, Frames, Lamps, Any Valuable or Keepsake. **RESTORERS OF AMERICA** — 756-9600. tf

LAWNMOWERS

Meyers Bicycle Center

 Bicycles —
 Lawnmowers
 Sales — Service
 1958 New Scotland Rd. — 439-5966

KITCHENS

KITCHENS

Custom designed for your home and pocketbook.

Top quality materials and craftsmanship.

Free estimates and consultation. Call Now for a FALL INSTALLATION
 Quality Construction **768-2341**

SHARPENING SERVICE

Scissors Sharpened. Also saws, chain saws, pinking shears, lawnmowers, garden tools, etc. 439-5156 or 439-3893. tf

TRASH REMOVAL

B.P.W. REFUSE SERVICE, residential & commercial. 439-5569. tf

TREE SERVICE

HERM'S TREE Service, Call IV2-5231
TREE SERVICE — reasonable rates — free estimates, prompt service, insured. 765-2971. 101819
REAGAN'S TREE SERVICE, removal, trimming, cabling. Emergency service, insured. 439-5052. 6199

ALTAMONT TREE SERVICE

REMOVAL & PRUNING
 Free Estimates/Reasonable Rates Insured
861-6541 or 861-5568

M & M TREE PRUNING & Lawn Service. Mark Mosher. 768-2849. 151930

BROWNIE'S TREE SERVICE

Removal, Pruning, Transplanting Reasonable Rates, Fully Insured Free Estimates, 24 Hour Service Phone **456-7660 or 456-3373** Fireplace Wood

SITUATIONS WANTED

PRIVATE BARTENDING for all occasions. 439-2875. tf

YARDWORK, housework, experienced boy, 16, will mow, clean, miscellaneous. 439-3740. 21812

CANING — Chairs, hand caned. Rockers, special price. 439-2116. 21812

LAWNMOWER, small engine repair and servicing. Reasonable, call 439-4218. 41812

MAGICIAN for birthday parties \$20 small group. Charles Huddle, 756-9029. 2185

ODD JOBS WANTED. Will paint, clean garages, basements, light trucking, etc. 439-2937 or 861-6778. 2185

WATCH REPAIRING

EXPERT WATCH AND JEWELRY REPAIRS. Diamond settings, engraving wedding and engagement rings, reasonable, your trusted jeweler, Le-Wanda, Delaware Plaza Shopping Ctr. 439-9665.

WATCH REPAIRING, expert workmanship. All work guaranteed. Also engraving, diamond setting watch bands. Harry L. Brown, Jeweler, 4 Corners, Delmar. 439-2718.

SIDING

Dick Domermuth ALUMINUM SIDING & TRIM

Our 26th Year
768-2429

TYPING SERVICE

TYPING SERVICE — letters, resumes, manuscripts, general. **Delmar Copy Center**, 121 Adams St., 439-3026. tf

CLASSIQUE DANCE SCHOOL

154 A Delaware Avenue
 CHILDREN AND ADULTS
 PRIVATE OR GROUPS
 All types of Dance and Exercise
439-3331 Mrs. B. Follett

Merchandise for Sale

SAILBOAT — Paceship — 12 ft. excellent cond. New shipmate trailer. 439-5203 weekends and evenings.

AUTO BODY SHOP

Hilltowns Sales & Service

COMPLETE BODY & FENDER REPAIRS

Howard Hurley

4222 Elm Dr., EAST BERNE

(off Pinnacle Rd. Helderberg Lake area)

CALL 872-1805

(satisfaction guaranteed)

I BUY PRE-1945 guitars, banjos, mandolins, violas, cellos. Please describe fully, write

Mr. Rose

Box 249

Stockbridge, MA 01262

(413) 298-4885

HOTPOINT, 30" electric stove. In good condition, \$100.00. 439-6965.

16 FT. METAL CHASSIS for camp trailer. \$125.00 firm. 439-4148.

BEDSPREAD, full size, hand crocheted. \$75.00, 439-3815.

CAMERA ARGUS, 35mm, case, flash attachment, light meter, \$50. 439-3815.

LAWN MOWERS — Toro 21", excellent, self-propelled reel/grass catcher, \$40.00. Also, special hand mower for greens, \$10.00. 439-9027.

2 TIRES, snow studded glass belted whitewalls/wheels. G70-15. Used one season, \$20.00 each. 439-9027.

FUR COAT, full length autumn haze mink. Size 16, sacrifice. 439-9027.

WEDDING PHOTOGRAPHY. Family portraits in the home. General photography. Copy work. Damaged photos restored. Call L. Spelich 439-5390.41812

ADDRESSOGRAPH, Elliott, good running condition, ideal for church, organization mailing lists, \$150. Inquire Spotlight 439-4949. tf

HAIR REMOVAL, specializing in leg waxing. Miss Teresa, 489-4534. 4185

8 ft. POOL TABLE, slate bed, balls, cues, rack, counter, good condition \$125.00. 439-3664.21812

SETTEE, solid teak, with covered cushions. 439-6709.

GIRLS COAT, size 10, fleece lined, never worn, \$16.00. Also, other girl's clothes, sizes 6-10. Also, girls bikes, 20" 3-speed, 24" & 26". 439-6709.

WANTED

WANTED — MALE BOWLERS, Sporthaven Lanes, Mondays 6:30 P.M. Phone 439-6742 or 872-0431. 31819

WANTED TO BUY

GUNG OF ALL KINDS bought for Cash — Moore's Trading Post, 9W, Ravena, 756-2558.

COMBINATION BOOKCASE/DESK, round pedestal table, china closet (over 6 ft. high), sideboard. 355-2640.41826

STUDIO COUCH, call 439-4837.

TRUCKING

PIANOS, APPLIANCES, light truck. Call for free estimates. 456-3155.

GARAGE SALE

HAVING A GARAGE SALE?



- Complimentary Signs •
- Stop In For Yours •

COHN, YAGUDA, CRONIN REALTY

321 Delaware Ave., Delmar — 439-7657

AUTOMOTIVE

1969 BUICK LE SABRE, 4-door, 439-2395.

1968 DODGE GTS, 440 cu. in. Excellent condition. 439-4866. 21812

1973 AMC HORNET — 14,000 plus miles, standard 6 cyl., 22 miles per gal., excellent cond., \$2100. Call 767-3400.

1968 OLDSMOBILE — Delmonte, \$175.00. 872-1644 after 5:00.

'75 PONTIAC Grand Prix L.J. — excellent condition, loaded, 28,000 miles. 439-3415.

HELP WANTED

HOUSEKEEPER TO LOVE Teacher's Toddler. Year round, excellent salary. Cleaning, laundry, own transportation. References. Box "L", The Spotlight.

AVON. Keep up with Mrs. Jones.

If she's working — you can keep busy, and make extra money, too! Take advantage of this perfect part-time earning opportunity. Call

Mrs. Callisto 785-9857 for information

MATURE WOMAN, to work as rater & policy writer. Fire & homeowners, filing. Agency in Tri-Village area. Reply in own handwriting. Box 291, Delmar, N.Y.21812

WANTED — CASHIER/SALES-CLERK. Permanent, weekdays 8:30 A.M. to 3:00 P.M. Starting Labor Day. Hilchie's American Hardware, Inc. No telephone calls — resume only.2185

MEDICAL TYPIST wanted for home work. Mail brief resume — Box S, Spotlight.

PART-TIME warehouse mechanic, light repairs, ideal for retired person. 439-9924.

MATURE SITTER, wanted for 2 boys. Daily 3:00-6:00, starting in September. 439-4308.21729

BOOTH RENTAL AVAILABLE — on Monday and Tuesday at the Cat's Meow Unisex Salon for any related service. \$20 per day. 439-0664.

TEENAGE SALESPeOPLE — sell Spotlight subscriptions in your own neighborhood for commissions. There are still households who haven't discovered the new Spotlight! Call 439-4949. tf

Sewing Machine Repairs

WELL KNOWN JOHN BESSON repairs all makes of sewing machines, in your home, free estimates. Sells second hand sewing machines, guaranteed for one year. 463-2520.

LANDSCAPING

LAWN REPAIR, new lawns, tree and stump removal. 439-4612, 463-4062. tf

PETS

FREE KITTENS, 439-1581. ...21812

BEAUTIFUL KITTENS, \$2.00/each. 439-2607.

EXCAVATION

BULLDOZER, BACKHOE, TRUCKING, fill and land clearing. 463-4062. tf

TRUCKING, top soil and fill. 767-9608.4185

LOST & FOUND

WHITE DOG, brown spots, part beagle, female, answers to "Smartie," July 30 at Delaware Plaza. 767-9458.

UNIQUELY WEEKLY

Subscribe to

The Spotlight

for professional news coverage of Delmar, Slingerlands, Voorheesville and nearby communities.

\$5⁰⁰ a year — 52 issues

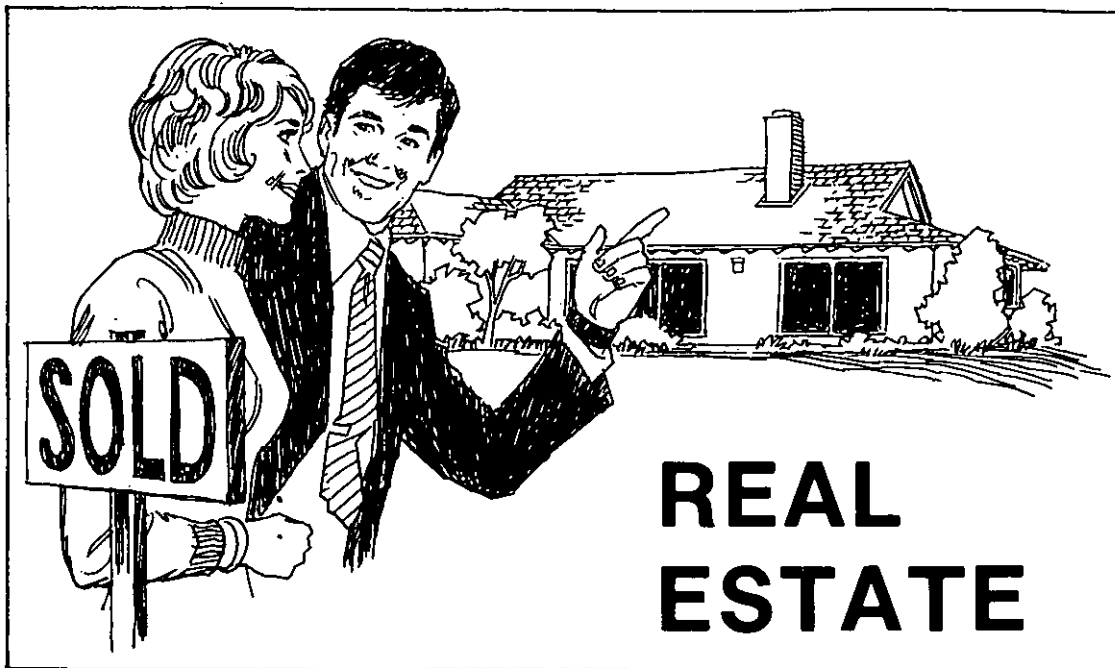
SPOTLIGHT, 414 Kenwood Ave., Delmar, N.Y. 12054

Please enter my renewal new subscription to the *Spotlight*. I have enclosed \$5.00 for the next 52 issues, \$8.00 for the next 104.

NAME _____

STREET ADDRESS _____

P.O. _____ ZIP _____



REAL ESTATE



The "Good-Buy" Sign

Means dedicated, professional, courteous service.
Cohn Yaguda Cronin Realtors

Try us at:
**321 Delaware Ave.
 Delmar — 439-7657**

Is Your Ad in the
NEW Spotlight?
 Call 439-4949

Real Estate for Sale

FOR SALE, furnished camp on Champlain, lake front, 4 bedrooms, 2 baths, fireplace, electric heat, appliances. \$40,000. Phone Breconshaw 439-4976.3185

Real Estate for Rent

ELSMERE — 1 bedroom flat, \$200 plus utilities. Includes: stove, refrigerator, garage. No pets, no children, security, reference. Business couple preferred.

WANTED TO RENT

WANTED

Rooms, Furnished/Unfurnished Apts.
 Suitable for
 Single & Married Law Students
 Available Mid-August to September 1st
 To List
 Call Albany Law School - **434-0138**
 Between 9 a.m.-12 noon

NEED A one-bedroom apartment; or will share. Write Box 398, Guilderland, N.Y. 12084.41826

APARTMENT, 1 bedroom, w/appliances, reasonable, Delmar area. 439-5152 after 5:00.

John J. Healy

439-7615
BUYING OR SELLING PROPERTY?



DIRECTORY Local

Brigantine, Inc. _____ 439-8168.

257 Delaware Ave.

Cohn Yaguda Cronin __439-7657
 321 Delaware Ave.

Klersy Realty Inc. _____439-7601
 282 Delaware Ave.

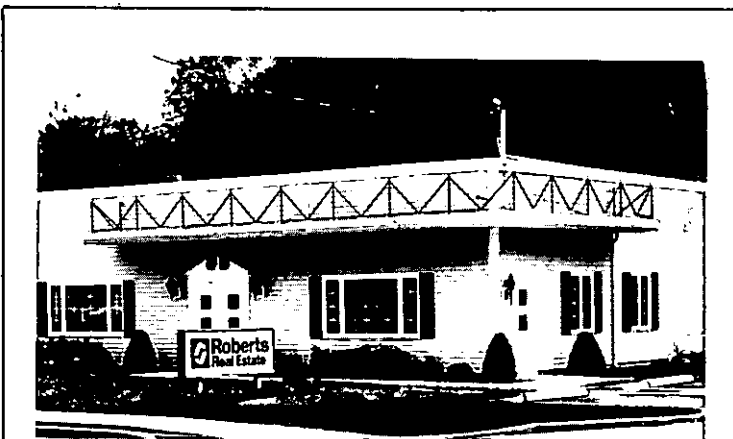
Philip E. Roberts Inc. _439-9906
 190 Delaware Ave.

Scarborough Realty Inc.439-9306
 Elm Avenue

Area

DeL. Palmer, Inc._____434-0181
 111 State St., Albany

Austin A. Guiffre Inc. _456-2113
 1872 Western Ave.,
 Westmere



THINKING OF SELLING YOUR HOME?

Pick up your phone and obtain the friendly services of a Roberts sales representative, plus the efforts of a specialized selling team.

NOW WITH 2 CONVENIENT LOCATIONS

MAIN OFFICE

1625 Western Ave., Albany, N.Y.
 Adjoins Stuyvesant Plaza & Int. RL 87
489-3211

DELMAR BRANCH

190 Delaware Ave., Delmar, N.Y.
 Adjoining Delaware Plaza
439-9906



**Roberts
 Real Estate**



KLERSY REALTY, INC.

282 Delaware Ave.
439-7601

For **ALL** your **REAL ESTATE** needs including relocating you anyplace in the U.S. and Canada.

**PERSONAL, PROMPT,
 PROFESSIONAL SERVICE**

**FAMILY DISCOUNT
SHOE CENTER**
"Name Brand Shoes at Discount Prices"
SHOE ACCENT
PHONE: 456-2776
1785 Western Ave., Westmere

Wheel Chairs

- Rental
- Sales
- Repairs



KRUGMAN'S DELMAR PHARMACY

361 Delaware Ave., Delmar
439-9914
Mon.-Fri. 9-7, Sat. 9-6

Cabot's STAINS



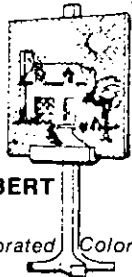
R.H. MILLER PAINT CORP.
296 Central Ave. — 465-1526
480 Broadway — 465-2466
ALBANY

Be creative
be correct . . .

**COLOR STYLE
YOUR HOME**
with

**PRATT & LAMBERT
PAINTS**

in exclusive Calibrated Colors*



Ed Dillon

EMPIRE PAINT COMPANY
142 Central Avenue
Albany, New York 12206
Phone: 449-5400

LUNCHEON!
IT'S DELICIOUSLY
DIFFERENT AT OUR HOUSE.
TRY US.

Outdoor Dining in our Cafe Chalet
when weather permits.

**SERVING FROM 12 NOON
WED. THRU SAT.**

**BAVARIAN
CHALET**

355-8005

Mastercharge & American Express
accepted.

Route 20 and French's Mills Road, Guilderland

Vox Pop

Vox Pop is open to all readers for letters in good taste on matters of public interest. Letters over 300 words are subject to abridging by the editor. All letters must be signed but names will be withheld on request.

Editor, The Spotlight:

I am writing to protest the lack of action for a safety measure along Elm Ave. I feel that something should be done. The street lights planned will slow the traffic up, but will some child have to get killed before some action is taken? A simple bike path along Elm Ave. would not be very expensive and would be a great help to the community. I feel incapacitated by this lack of interest because I am 14 and not allowed to go to the park by myself. If you feel a bike path is too much, the posts which were up in the beginning would suffice.

Delmar Carolyn Smith

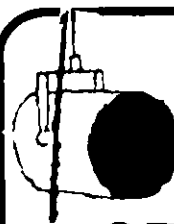
Unfortunately "simple bike paths" cost approximately \$40,000 a mile, according to authorities. The town's bicycle safety council is working on the matter but progress is slow. In the meantime the town has asked the county to widen and pave the shoulders of Elm Ave.

We agree with you — something should be done. If a path were built now it would insure bike safety for years to come. If such foresight had been applied years ago it would not be necessary to install bicycle facilities in roadbeds wide enough only for automobile traffic.

MASONRY REPAIRS FOR THE HOME

No job too small . . .
Free estimates . . .
Fully Insured . . .

**456-0669 or
489-1831**



SPOTLIGHT on community corner

Summer Band Concert

Bach, Handel, Sousa and Rodgers and Hammerstein will be at the Elm Ave. Park tonight (Thursday), interpreted by Bethlehem's summer band of students in Grades 6-12 and local "alumni." Bring your folding chair to the lawn in front of the main building and enjoy a free concert starting at 8 p.m.

The band is directed by Ms. Eloise Scherzer and Alison Voorhees. While you're listening, let your imagination drift back to the days before television, when every town had band concerts in the park or on the village green and neighbors had more time to get together.

On the cover: Kim Meinert
Photo by Mark Bosworth

Community Corner, a public service column of important community events, is sponsored by

**City & County
Savings Bank**
Member FDIC

163 Delaware Avenue, Delmar
(Opposite Delaware Shopping Plaza)
439-9941

Starr Gardenway, Inc.
 LATHAM, RT. 7, TROY-SCHUY. RD.
 AT AIRPORT RD. Ph. 785-7701

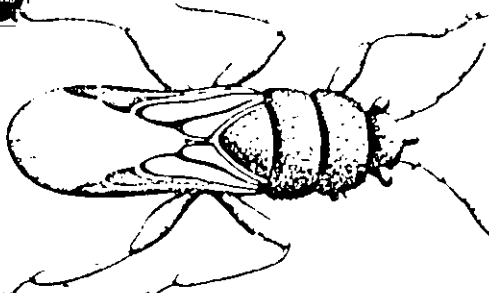
HOURS:
 DAILY 9 to 8
 SAT. & SUN.
 9 to 5:30

**NOW IS THE TIME . . .
 PROTECT YOUR LAWN**

- CHINCH BUGS & JAPANESE BEETLE GRUBS
- SOD WEB WORM • EUROPEAN CHAFER GRUBS

If your lawn starts showing
 brown spots, bring us
 a sample for diagnosis.

CHINCH BUGS



USE NOW!

- Contains Chlorpyrifos Dursban
- Controls chinchbugs for two full months
- Apply now, and again in two months, for protection all summer long
- Satisfaction - or money back

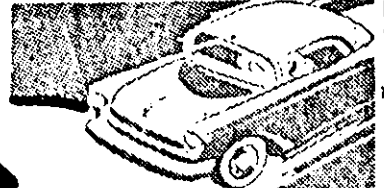
WHY PAY MORE?
\$9⁹⁵ 10,000-Sq. Ft.
 For Chinch Bugs

\$10⁹⁵ With
 Fertilizer

No synthetically produced fertilizer
 can compare with **MILORGANITE**

SALE \$4.95 50 LB
2 for \$9.50

We'll make your
 motor
 sing



- Engine Tune-up
- Front End Alignment
- Automatic Transmission Service
- Modern Equipment
- Skilled Mechanics

BAILEY'S GARAGE

Phone Delmar 439-1446
 Oakwood Road, Elsmere

Leonardo Hair Designers
**Josephine, Tom, Brian and
 Rosemary**

Delaware Avenue (Located Behind Mullen's Pharmacy)

PHONE 439-6066

GiGi Hair Removal Process
 General Hair Removal

Permanent Eyelashes and Nails
HAIRSTYLING

for
MEN, WOMEN AND CHILDREN

Tuesday & Wednesday Specials
 on Permanents

NEW CUSTOMERS — Color _____ \$10.95

FROSTINGS _____ \$24.95

OPEN Wed., Thurs. & Fri. evenings



Bethlehem Public Library
 451 Delaware Avenue
 Delmar, New York
 12054

7-6789-45