

# The Spotlight

Controlled Circulation Publication

March 10, 1977  
Vol. XXIII, No. 9

20¢

Graphic newsweekly serving the towns of Bethlehem, New Scotland and nearby communities

## Take heart: Spring is near!



.....So  
'Where's  
Charley?'

Page 7

*Mike Winters sees hope  
on Shetland Dr.*

*Photo by Andrew L. Jones*

## Spotlight CALENDAR

# Affordable life insurance... with SBLI

## The coverage you want . . .

At C&C you'll find the Savings Bank Life Insurance coverage you want . . . for you and your family. Straight Life. Endowment Plans. Term Insurance. Family Plans. The choice is yours . . . and our SBLI consultants will guide you in selecting the coverage that's best for your budget and you.

## At the price you can afford to pay

Here's just one example of how affordable SBLI protection is. A man, age 30, can buy \$30,000 worth of 5-Year Term Insurance for just \$8.70 per month. Even less if paid annually.

That's just one example. We'd like to show you more. Stop in and talk with our SBLI consultant today . . . or mail the coupon below for your free booklet . . . "A New Consumer's Guide to Low Cost Life Insurance." When it comes to helping you save . . .

**We're here<sup>®</sup>  
on your  
account.**

### MAIL THIS COUPON TODAY

I want the facts on SBLI's affordable protection.

NAME \_\_\_\_\_

ADDRESS \_\_\_\_\_

CITY \_\_\_\_\_ STATE \_\_\_\_\_ ZIP \_\_\_\_\_

PHONE \_\_\_\_\_

**C** City & County Savings Bank

**ALBANY**  
DOWNTOWN—100 State Street  
UPTOWN—301 New Scotland Avenue

**BETHLEHEM**  
163 Delaware Avenue, Delmar  
(Opposite Delaware Shopping Plaza)

**ROTTERDAM**  
1900 Altamont Avenue  
(Near Curry Road)

**SCHENECTADY-NISKAYUNA**  
1700 Union Street, Schenectady  
(Corner of Dean)

**Tri-Village FISH** — Call 439-3578 for voluntary service — 24 hours a day the year 'round — offered by residents of Delmar, Elsmere and Slingerlands to their neighbors in need of help in any emergency.

**Bethlehem Jaycees** meet first and third Wednesdays of the month, 8 P.m., Center Inn, 9W, Glenmont.

**Welcome Wagon** — Newcomers and mothers of new babies call 785-9640, Mon. thru Sat., 8:30 A.M., 6:00 p.m. so you may have a Welcome Wagon call.

**Bethlehem Memorial Auxiliary to Post #3185**, Veterans of Foreign Wars, meets the third Monday of every month, at the Post Rooms, 404 Delaware Ave., Delmar.

**The Albany County Pistol Club**, Winnie Place and Maewin Drive, Delmar, welcomes guests at its indoor pistol range every Tuesday at 8 p.m. Information: Dave Herbach, 439-4372 or Tom Corrigan, 439-3301.

**Monarch Club of Albany** meets every Tuesday night at the Center Inn, Glenmont, 6:00 P.M.

**Bethlehem B.P.O.E. 2233**, first and third Wednesdays, 8 p.m. at the Lodge in Cedar Hill, Rt. 144, Ladies' Auxiliary second Wednesday.

**Bethlehem Youth Employment Service**. School Year Schedule, Monday-Friday, 1:00-4:30 P.M. Summer schedule, 8:30 A.M.-1:00 P.M. Telephone 439-2238.

**Glenmont Lions Club** meets 2nd and 4th Tuesdays at La Casa Restaurant, Selkirk, 6:30 p.m. Visitors welcome. Info: Charles Sperbeck, 439-9165.

**Bethlehem Lions Club** meets first and third Wednesdays at LaCasa, Selkirk, 6:30. p.m.

**AARP** meets 12:30 p.m., third Tuesday of month, Delmar First United Methodist Church, Kenwood Avenue, Delmar.

**League of Women Voters**, Thursdays, 9:30 a.m. Bethlehem Library Information 439-5786.

**Half Moon Button Club of Albany**, third Wednesday noon of the month at Bethlehem Public Library. For information 872-0068.

**Kiwanis Club of Delmar**, Mondays at 6:15 at Center Inn, Glenmont.

**Rotary Club of Delmar** meets every Tuesday night 6:15 at Schrafft's Motel.

**The Delmar Community Orchestra** rehearses every Monday evening from 7:30-9:30 at the First United Methodist Church of Delmar.



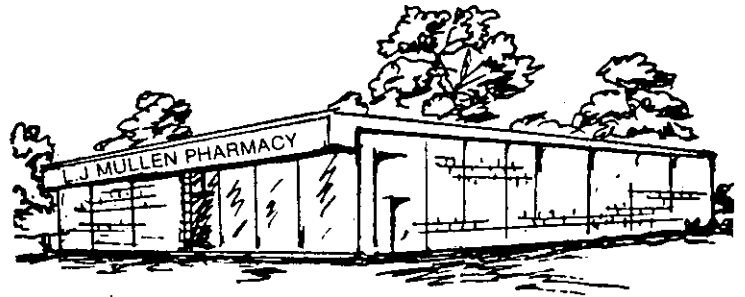
DELAWARE PLAZA

**439-8123**

HALLMARK THOUGHTFULNESS SHOP  
RUSSELL STOVER & FANNY FARMER  
CANDIES

LARGE BOOK SELECTION  
OFFICE SUPPLIES  
CUSTOM IMPRINTING OF ALL KINDS  
BUSINESS CARDS  
FINE STATIONERY  
WEDDING INVITATIONS  
LETTERHEADS ET CETERA

ALL IMPRINTED PROMPTLY  
ON YOUR CHOICE OF PAPER



**256 Delaware Ave. — 439-9356**

*Mullen Pharmacy announces an added dimension in our health care services. We now carry full lines of orthopedic appliances, medical supplies, as well as the Hollister ostomy line. Please feel free to stop in and discuss your medical needs with our accredited orthopedic fitters Kim Weaver and Connie Fahd.*

*Rentals, as well as sales, are available in accordance with patient needs.*

*Senior Citizens note—we will do your Medicare appliance billing directly—saving you expense, time and paperwork.*

Bethlehem Junlor Woman's Club meets 2nd Wednesday of each month, 8 p.m., Bethlehem Public Library.

Bethlehem Women's Republican Club, third Monday, Bethlehem Library, 7:30 p.m.

**THURSDAY, MARCH 10**

Pancake Supper sponsored by Troop 72, Slingerlands United Methodist Church, 5-7 p.m.

Ladies Auxilliary of Delmar Fire Co., Delmar Fire Hall, 8 p.m.

Ladies Auxilliary of Elsmere Fire Co., Fire Hall, 8 p.m.

Albany Area Retired Teachers Assn., Bethlehem Library, 1 p.m.

Duke University Chorale, First United Methodist Church, Delmar, 7:30 p.m.

Film: "Beaver Valley and Nature's Half Acre," Voorheesville Library 4 p.m.

**FRIDAY, MARCH 11**

Film: "The Red Pony," Bethlehem Library, 7 p.m.

**SATURDAY, MARCH 12**

Bob Killian, Bethlehem Coffee-house, 8:30 p.m.

St. Patrick's Night 16th annual dinner dance. Blanchard Post American Legion, cocktails 6:30 p.m. -dinner 7:30, dancing 9-1 a.m. Reservations:439-9819.

Guided Program: "Bugs and Twigs: How to know the Trees in Winter," Five Rivers Environmental Center, Game Farm Rd., Delmar, 2 p.m. Wear warm clothing and boots.

**SUNDAY, MARCH 13**

Mythology For Everyone, slides, stories, movies and a taste of Ambrosia, Bethlehem Library, 2 p.m.

Film: "San Francisco," Bethlehem Library, 2 p.m.

**MONDAY, MARCH 14**

Business meeting, Delmar Progress Club, Bethlehem Library, 10 a.m.

Microwave cooking demonstration Bethlehem Library, 7 p.m. Attendance is limited to 150, free ticket at Hilchie's Hardware, Delmar.

Final day for reservations, Tri-Village Welcome Wagon fashion show and luncheon at Albany

Country Club on March 22. Reservations and information: 439-6867, 439-7049.

Small Ensemble Festival, Bethlehem Elementary and Middle School pupils, Middle School Auditorium, 8 p.m. Public invited.

**TUESDAY, MARCH 15**

Bethlehem Central Faculty Recital, Middle School Auditorium, 8 p.m. Public invited.

Bethlehem Tri-Village Chapter, AARP, slide lecture on "Future Communications," Emil W. Sticht, First United Methodist Church, 1:30 p.m. Social hour 12:30 p.m.

Blanchard Post American Legion Auxilliary, covered dish supper, initiation, post rooms, 6:30 p.m.

"All About Fire," a multi-media workshop for grades 1-3, Bethlehem Library, 3:45 p.m.

Public Hearing, Bethlehem Planning Board, on the application of V & G Enterprises, Inc. Latham, for a proposed 8-lot subdivision to be known as Elmwood, located on Elm Ave., south of the By-pass, east of Rt. 32. Applicant proposes duplex units for these lots. Bethlehem Town Hall, Delmar, 7:30 p.m.

Free blood pressure clinic, Bethlehem Community Center, 125 Adams St., Delmar, 9-11 a.m., 1-3 and 7-9 p.m.

GROUND HARDWOOD  
COMPOST  
AVAILABLE

**M & M TREE AND  
LAWN SERVICE**

Complete Rototilling  
Complete Tree & Stump Removal

**SPRING CLEAN UP**

MARK MOSHER  
RD 1, Delmar, N.Y.      439-1694

# BROCKLEY'S DELMAR TAVERN

Four Corners, Delmar — 439-9810

L  
D  
U  
N  
C  
H  
E  
S  
N  
N  
E  
R  
S

## SPECIAL!

**PRIME RIBS OF BEEF Au Jus**  
**\$5.95**

(EVERY SATURDAY EVENING)  
Served with potato, vegetable and salad.

P  
I  
Z  
Z  
A

**Kitchen Open 11 A.M. — 12 P.M. Daily**  
**11 A.M. — 1 A.M. Fri. & Sat. • Closed Sunday**

### WEDNESDAY, MARCH 16

**Public business meeting,** Bethlehem Central Board of Education, 90 Adams Pl., Delmar, 8 p.m.

**Ecumenical Bible Study, "The Upper Room,"** Rev. Warren Beaven, Delmar Methodist Church, at St. Stephen's Episcopal Church, Elsmere, coffee 9:30 a.m., study 10-11 a.m. Hostess: First Reformed Church of Bethlehem. Babysitting provided.

**Film: "Batman,"** Clarksville Community Reformed Church, 7 p.m.

**Slingerlands Players, "View From the Bridge,"** Arthur Miller, Unionville Playhouse, 8:40 p.m. 434-1777.

**Open meeting,** Bethlehem Town Board, Selkirk Fire Hall, Maple Ave., Selkirk, 7:30 p.m.

### THURSDAY, MARCH 17

**Red Cross Bloodmobile** Bethlehem Central High School, girl's gym, 10:30 a.m.-4:30 p.m.

**Town of Bethlehem Historical Assn.,** Louise Merritt, director of Historic Albany Foundation, speaker, Schoolhouse Museum,

Clapper Rd. and Rt. 144, Cedar Hill, 8 p.m. Free. Refreshments.

**Slingerlands Players, "View From the Bridge,"** Arthur Miller, Unionville Playhouse, 8:40 p.m. 434-1777.

**St. Patrick's Day dinner,** Bethlehem Grange, Beckers Corners.

**League of Women Voters unit meeting, "U.N. Census,"** Bethlehem Library, 9:30 a.m. Information: 439-5786, 439-0642.

**Film: "The Living Desert,"** Voorheesville Public Library, 4 p.m.

### FRIDAY, MARCH 18

**7th Annual Card Party,** Ladies Auxiliary, Bethlehem Lodge of Elks, 8 p.m. Benefit drawing, prizes, refreshments. Reservations: 489-5432, also tickets at the door.

**Slingerlands Players, "View From the Bridge,"** Arthur Miller, Unionville Playhouse, 8:40 p.m. 434-1777.

**Games Night,** Bethlehem Library Large Community Room 7 p.m.

### SATURDAY, MARCH 19

**Film: "Captain Sinbad,"** Bethlehem Library, 2 p.m.

**American Red Cross** rowing and canoeing classes start at Elm Ave. Park recreation dept. classroom, 10 a.m. Registration at first class for the ten-week course.

**Slingerlands Players, "View From the Bridge,"** Arthur Miller, Unionville Playhouse, 8:40 p.m. 434-1777.

**Tracy Schwarz,** Bethlehem Coffehouse, 125 Adams St., Delmar, 8:30 p.m.

# area arts

A capsule listing of cultural events easily accessible to Bethlehem-New Scotland residents, provided as a community service by the General Electric Co. plastics plant, Selkirk. Phone numbers are for information and tickets.

## THEATER

"The Importance of Being Earnest," Oscar Wilde satire, Cohoes Music Hall, March 5-27, Wednesdays through Saturdays at 8:30 p.m., Saturday and Sunday matinees at 3 p.m. Box Office 237-7700.

"What the Butler Saw," contemporary farce, State University Theater's opening production, SUNYA Performing Arts Center, March 10-13, 16-19, 8 p.m. (2:30 p.m. March 13 only). Box Office 457-8606.

"The Hostage," Brendan Behan comedy, Albany Civic Theater, March 2-6, 9-13, 8:30 p.m. (7:30 Sundays). Box Office 462-1297.

"Kiss Me, Kate," musical, by Guilderland Players of Guilderland High School, March 10-13, 8 p.m. (Sunday 2 p.m.) 861-8591, ext. 145.

## MUSIC

Albany Symphony Orchestra, playing music by Mozart, Rachmaninoff, Creston, Ravel, Palace Theater, March 19, 8:30 p.m. 465-4755.

Menahem Pressler, Israeli-American pianist, Page Hall, Western Ave., Albany, March 20, 3 p.m. 457-8606.

Anna Russell, musical satirist, Cohoes Music Hall, March 15, 8:30 p.m. \$5.50, \$4.50, \$3.50. Box Office 237-7700.

## ART

Exhibition of paintings, woodcuts, drawings by Saratoga artist Neva Hansen, Rensselaer County Council for the Arts, 189 Second St., Troy, March 6-25, weekdays 9-5, Sundays 2-5, Free. 273-0552.

## LECTURE

Legislative forum, "The Prison System in Crisis," Commissioner Stephen J. Chinlund, Chancellor's Hall, March 15, 10 a.m. Free.

Travelogue, "Land of the Midnight Sun," Dr. Miles Martin, Schenectady Museum, March 16, 8 p.m. |4. 372-3386.

## FILM

"Top Hat," 1935 Astaire-Rogers classic, Cohoes Music Hall, March 14, 7:30 p.m. 237-7700.

"Wuthering Heights," Olivier-Oberon, Schact Center, Russell Sage College, March 13, 7:30 p.m. 270-2332.


**Kitchen Remodeling**

- Free Estimates
- Fully guaranteed
- Reasonable Prices

**768-2341**

**Quality Construction**

**marone**



**Douglas G. Marone**  
DISPENSING OPTICIAN

*"Dedicated to the science of compounding  
Eye Physicians' Prescriptions"*

1 Delaware Plaza (facing Delaware Ave.)

Daily 9:30-5:30  
Sat. 9:30-2:00  
Evenings by Appointment

**TEL. 439-9191**

**GENERAL ELECTRIC**

SELKIRK, NEW YORK 12158

Equal Opportunity Employer

# Virginia Lynch

(Finest Feminine Fashions)

230 Delaware Avenue, Delmar, N.Y. 12054  
Telephone: 518-439-9005

March 10, 1977

In the interest of Serving  
you better . . . . .

We Want You to be the first To Know that We are Consolidating our Downtown Store  
into Our lovely Delmar Fashion Center, effective March 1.

## You Will Have:

- \* Plenty of Free Parking
- \* A lovely Relaxed Atmosphere
- \* Greater Selection and Diversification
- \* More Personal Attention by our Entire Staff
- \* Our Same Incredible Expert Alterations
- \* Easy Accessibility: (Only 4 tiny blocks beyond the Delaware Plaza Shopping Center)  
Same Side of Street
- \* Extended hours . . . 10 - 5 6 Days A Week & Thursday Nights Until 8:00 P.M.
- \* And . . . Because You are Special To Us, We've Saved A Super Sale for You of Current,  
Cruise and early Spring Merchandise at 20 - 50% Savings
- \* Our Sale will last Only March 1 thru March 12
- \* So . . . . Be Ready, and Be there (If You get a little lost, Call us . . . . 439-9005)
- \* And then . . . We're into Spring, 1977 - Happy Spring in Delmar, U.S.A.!

Sincerely,

Virginia Lynch



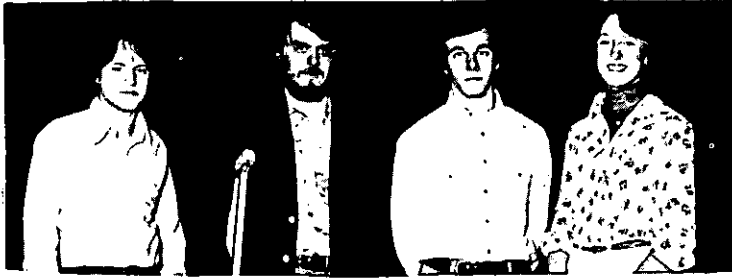
# The Spotlight

Controlled Circulation Publication

Nathaniel A. Boynton  
Editor-Publisher  
John C. Bennett  
Sales Manager  
Arline M. Holder  
Office Manager

Graphic newsweekly serving the towns of Bethlehem, New Scotland and nearby communities

439-4949



"Charley" leads at BC: Stringham, Rice, Crow, Howes. Right, the kick line rehearses: from left, Margie Nevens, Christa Unright, Donna Ure, Mary Wendth, Kathy Slater. photos by Andrew L. Jones

## SENIOR PLAY

### Where's Charley? He's on stage!

The halls are alive with the sound of music at Bethlehem Central High School as senior play rehearsals hit high gear. This year's musical is "Where's Charley," based upon "Charley's Aunt" written by Brandon Thomas.

The play is set at the turn of the 19th century on the Oxford campus. Two male students invite two female friends to their school for a weekend and ask "Charley's Aunt" to chaperone. The girls show up, but the chaperone doesn't, and that's where the confusion and fun begin.

Over 100 seniors participate in the play, behind the scenes and on stage. Jerry Stringham and Doug Crow are the Oxford men. Their dates are Deirdre Zimmerman and Margy Howes. Other leads are played by Jill Baker, John Minnock and David Herman. The play is directed by Phillip Rice with musical direction by Joseph Farrell and choreography by Ruth Powers.

The play is more for merry-making than profit-making.

Whatever proceeds are realized after the bills are paid go toward the senior ball and as a start for next year's play.

"Where's Charley" will be presented at the Bethlehem High School on March 17, 18, and 19 at 8:15 p.m. Adult tickets are \$3.50, students are \$2 and tickets are available at the Paper Mill, The Bank, Mullen's and the high school.

### Board holds firm on chamber plea

Bethlehem board of education stood firm on its refusal to adopt a state law that would accord tax reduction up to 50 percent to new businesses or substantial improvements to existing businesses. The Bethlehem Chamber of Commerce sent four of its directors to last week's board meeting to urge the board to reconsider its earlier vote. In December the board voted 6-1 against the tax cutbacks.

W. Gordon Morris Jr. stated that businesses were locating in

the Ravena-Coeymans-Selkirk school district because of lesser taxes. He suggested the tax cut would encourage business to locate on lands along Rts. 144 and 9W that presently yield little tax revenue because they are open farms. The chamber pointed out that all taxpayers in the district would benefit by new businesses sharing the tax burden.

Bertold Weinberg, board of education member, said he was "sick and tired of hearing what the state is doing for us," and said that the state should offer the tax cut and not expect the school districts to forego their taxes. Board members repeated

their contention that the town's growth "comes naturally," and the tax burden should be shared equally.

The school board's stand is compatible with most other school districts in the area, but in conflict with the town board. The tax exemptions, based on a declining formula for a 10-year period, have been adopted by the town boards of Bethlehem and New Scotland.

In other business, the board recognized the contribution of Mrs. Joyce Strand, chairman of the volunteer program, and the 4,723 hours volunteers have donated to district schools.



### Blood pressure clinic

There will be a free blood pressure clinic for residents of the Town of Bethlehem Tuesday at the Bethlehem Community Center, 125

Adams St., Delmar. Hours will be from 9 to 11 a.m., 1 to 3 and 7 to 9 p.m. These clinics are staffed entirely by volunteers and any nurse who would like to donate a few hours' time to this effort is urged to contact Ruth O. Bickel, 439-4473.

**"THE INSURANCE OFFICE"**  
TWO AGENCIES TO SERVE YOUR NEEDS

**OLOF H. LUNDBERG AGENCY**  
&  
**THE TUCKER-SMITH AGENCY**  
159 Delaware Avenue  
Delmar, New York  
439-7646

# Planning A Party?

*We have the Know How and Facilities to Make Your Party The Happy Occasion it Should Be.*

Call Rick Blake in our Sales Dept; Tell us Your Plans and We'll Help You with all the Arrangements.

*Out of Town Guests?  
Our Accommodations are Spacious,  
Ultra-Modern and Splendidly  
Decorated.*

*Group Rates Upon Request.*



Albany  
Motor Inn

**SIDEWHEELER RESTAURANT**  
Route 9W, Glenmont, New York 462-2962

### ZONING Board ponders developers' suit

Bethlehem board of appeals has turned a Slingerlands developer's show cause order over to the board's counsel for study.

Attorney Peter Wager is expected to give board members his recommendation at next Wednesday's regular meeting in town hall. The board will then decide whether to accede to the developer's court appeal or fight it in the courts.

Supreme Court Justice George Cobb upheld the appeal of Juris VanCans of Slingerlands in December after the board had rejected his petition to build a four-unit apartment house on land he owns at Jericho Rd. and Elm Ave., Selkirk.

The board has cancelled its regular session this week for lack of a quorum.

### Subdivision plans up for a hearing

Residents of Elm Ave. in the vicinity of the town park and the Delmar By-pass are expected to turn out in force Tuesday when the Bethlehem planning board holds a public hearing on the Elmwood subdivision. The session is

scheduled for 7:30 p.m. in town hall.

The developers' plans call for eight duplex houses on the south side of Elm Ave. just east of Rt. 32. The proposed design is two-story Colonial on lots varying from 16,500 to 35,000 square feet with front-yard septic systems. The tract is in a Residential-A zone that backs up to a Double A zone.

### Glenmont project one step closer

The largest housing development currently on the docket in Bethlehem got a major boost last week when the town planning board approved a motion to grant a blanket preliminary approval to seven remaining sections of Bicentennial Woods instead of taking them one at a time.

The first section of the 148-lot subdivision between Feura Bush Rd. and Beacon Rd. in Glenmont is already in construction. The remaining seven sections comprise 133 proposed single-family residential sites.

The consolidated approval was sought by Abco Builders Inc. of Douglaston, L.I., represented by Lindsay Boutelle, Delmar land surveyor. The vote was 5-0, with William R. Weber, board chairman, and Alvin Greenwood abstaining.

**SHUTTLE HILL**  
256 DELAWARE AVE., DELMAR, N.Y.  
CORNER DELAWARE, ELSMERE AVE'S.

CULINARY HERBS AND SPICES	DOLL HOUSE MINIATURES	ANTIQUE MINIATURE FURNITURE, ACCESSORIES
FINE TEAS JAMS SOAPS	FURNITURE BY IVAN LAWSON	NO CATALOGUE
GREETING CARDS	AND OTHER	COME TO SEE US
EXIT 23 - THRUWAY 518-439-6882	MASTER CRAFTSMEN	MON. - SAT. 10:00 - 5:00



**POLITICS**

**Carey veto gives GOP more time**

Gov. Hugh L. Carey's veto of the controversial spring primary has taken the heat off Bethlehem's town Republican committee in drawing up a slate of candidates for the November elections.

The governor's axe gave town chairman Bernard Kaplowitz and his "search" panel an eleventh-hour reprieve from the pressure of filing petitions by a mid-April deadline. That timetable, which the Legislature had set up for a June 7 primary, is now obsolete, and the primary will revert to the first week in September. Now the political calendar calls for candidates' petitions to be signed in late June and early July, filing petitions by the third week in July, and seven weeks of campaigning.

Whether the new timetable is a good break or a bad one

depends on who is looking at it. To Kaplowitz, confronted with some sensitive choices in the upcoming supervisor and town council races: "It (the veto) was a big break. I didn't expect him (the governor) to do it, but I'm glad he did."

The return to the September primary gives Bethlehem Republicans more time to screen their candidates and take temperature readings from the constituency. On the other hand, it prolongs the suspense and gives the principals extra time for political maneuvering, which may or may not be to the party's advantage.

At least one primary fight is in prospect: Edward Mocker, a self-styled maverick Republican, Selkirk dairyman and longtime member of the town planning board, has declared he will challenge incumbent Councilman Harold Williams of Selkirk for a seat on the town board. Party insiders also expect Thomas Jeram, 41-year-

Special Offer  
**CARPET \$288 FOR 3 ROOMS**

Based on 36 sq. yds., Includes 1st quality, sculptured, 100% nylon carpet, 60 oz. sponge rubber pad, installed wall to wall.

**SHOP AT HOME**

We show all samples & measure right in the comfort of your home, all free & without obligation.

**Quality Carpets & Flooring**

Carpet, No-wax Vinyl, Tile, Installations

**768-2341**

Call Now, 24 Hours & Collect



**TACO J's**  
"a leetle taste of Mexico"  
**ANNUAL TACO EATING CONTEST**  
Sunday, March 27—1-3 P.M.

at 577 New Scotland Ave.

For details phone 438-7073



**577 New Scotland Avenue, Albany**

(Opp. St. Peters Hosp.) — 438-7073

Tues., Wed., Thurs. 11-8; Fri., Sat. 11-9; Sun. 3-8

**BETHLEHEM PRESCHOOL**

is currently accepting applications for September, 1977  
**NURSERY SCHOOL**—2½ to 5 yrs.—9:30-12 & 1-3:30  
**PRIVATE KINDERGARTEN**

- Quality Day Care available 7 a.m. to 5:30 p.m.  
5 Days a Week—52 Weeks a Year

- Limited Day Care Openings Currently Available  
Full and Part-Time

Licensed by NY State  
Dept. of Social Services

All Teachers  
Certified

**BETHLEHEM PRESCHOOL**

Glenmont, N.Y. 12077

PHONE 463-8091

A Non-Profit — Non-Discriminatory School

**LAST 3 DAYS.....**

"Discover our Difference"

**GREENHOUSE SALE**



Spectacular  
Indoor  
Plant  
Savings!

20-50% off

Fresh Flowers **CARNATIONS \$2.99** Mixed colors Bunch(10)

**OPEN SUNDAY**

Feura Bush Rd.  
Glenmont  
3699 439-1835  
Albany-Carman  
Rd., Guilderland  
356-0442



Open Daily 9-5; Sunday 10-5

A J.P. JONAS INC. AFFILIATE

**C. B. CLARKE, INC.**  
**FOR**  
**INSURANCE**  
**CALL**



**Burt Anthony**

Now is the time for a complete review of your homeowner policy. No charge for the review. Call 439-9958



339 Delaware Ave.  
 Delmar

old Delmar lawyer, to file for the supervisor's race if he doesn't win the town committee's designation. That designation currently is wide open. Incumbent Harry Sheaffer feels he should be renominated on the basis of his experience and professional performance in town hall, where he has served 13 years as comptroller and is in his third year as supervisor. Edward Sargeant, a member of the county legislature, also wants the job.

**Woods walk Saturday**

Five Rivers Environmental Education Center, Game Farm

Rd., Delmar, is offering a guided program on "Buds and Twigs: How to Know the Trees in Winter" on Saturday. The program will start at 2 p.m. and last approximately one hour. Warm clothing and boots should be worn.

**Babe Ruth signup**

Bethlehem Babe Ruth baseball will hold registration at St. Thomas School on the next two Saturdays. The signups for players 13-15 will take place March 12 and March 19 from 12:30 to 2 p.m. Registrants must bring proof of age and must be accompanied by a parent. There is no fee.

**Virginia Lynch combines shops.**

Virginia Lynch, one of the Capital District's best known businesswomen, has shown her confidence in the Delmar area market by consolidating two feminine fashion stores in her shop on Delaware Ave., Elsmere.

Miss Lynch, a director of the Albany Chamber of Commerce and an active member of a number of civic and professional organizations, has closed her downtown Albany shop at 40 Maiden La. in order to concentrate in Bethlehem.

Among the renovations in the Elsmere store are the addition of several fixtures and paintings from Maiden La., plus a large mirror and three mannequins. "The girls are behaving very well," observed Virginia last week.

One of her own original paintings done on a discarded formica tabletop adorns the renovated boutique, another original is in the powder room (along with real plants), and a

*Tool's*

**RESTAURANT**  
 283 Delaware Ave.  
 Delmar, N.Y. 439-9111

Open 7 A.M. to 8 P.M.  
 Seven Days A Week

NO FINER FOOD SERVED ANYWHERE  
 GOOD COCKTAILS, TOO!

*Breakfast, Lunch and Dinner  
 at Attractive Family Prices*

SPECIAL  
*Waverly—Schumacher Sale*

- **CUSTOM DRAPERIES**  
*Lined or Unlined*
- **CUSTOM BEDSPREADS**  
*Coverlets—Dust Ruffled  
 Quilted or Unquilted*

Tremendous Selection of Distinctive  
 Decorative Prints and Solids.  
 Famous WAVERLY—SCHUMACHER  
 QUALITY! (many with companion wallpaper)

20%

OFF

*Marcell's*

DECORATORS

STUYVESANT PLAZA — 489-4795  
 OPEN: Mon. thru Fri. 10 A.M. to 9 P.M.; Sat. 10 to 5:30 P.M.



J.W. Campbell

Virginia Lynch

third in a new downstairs office. The basement has been completely renovated to include two offices and an alterations room presided over by Mary Ann Jordan of Loudonville. There also is stereo in every room, starting with the entrance foyer, where visitors are greeted by an ultra-modern oil painting blending with contemporary wallpaper and a period piece done in "a happy yellow that matches the homey color in the boutique."

Virginia admits to being "very big on mirrors." She says she has been this way since her early days in the retail industry, where she won national prizes for volume with a major mail order house. She later was a senior buyer for Gimbel's in New York and 11 metropolitan branches before fulfilling a lifetime dream in buying the Albany business in August, 1974. She opened the Delmar shop in October, 1975.

Virginia, a friendly person who likes to be called by her first name, sometimes worries

about an image of high prices. "I'm not so exorbitantly expensive," she says. "People should never be afraid to come in and just look around. We

have lots of sportswear and dresses at very reasonable prices."

Among her activities are Zonta International, the

### Those once-upon-a-time famous watches...

Millions of questionable watches are sold every year by non-jewelers and no one wants to service them.

You can't expect your favorite jeweler to be thrilled when you bring in one of those once-upon-a-time "famous name" discount watches to be repaired, or one of those brands no one ever heard of.

A reputable jeweler just doesn't handle that kind of product (Or stock batteries for all those cheap digitals of unknown make.) There are 64 different model batteries.

So, unless you don't mind sending your "bargain" watch back to Hong Kong or wherever for services you'll usually find it wasn't such a bargain after all.

It's much wiser and much more practical to buy your watch from a reputable jeweler. You'll always receive better value and you'll always be assured of proper service.

**HERE WE CARRY ONLY REPUTABLE FINE MAKES THAT CAN BE CONVENIENTLY SERVICED WHEN NEEDED.**

Prices Start About \$20.00 up to \$2,000.00

FRANK H. *Adams*

Registered Jeweler

58 No. Pearl St., Cor. Steuben  
Downtown Albany

9:30 to 5 Shop Thursday Night 'till 8 p.m.

# Take Uncle O'Grimacey Home Free

No Purchase Necessary



Have a  
**SHAMROCK SHAKE AT**

**Uncle O'Grimacey  
is an Inflatable Doll  
or a Hand Puppet  
Yours FREE at  
McDonalds  
152 Delaware Avenue  
Elsmere**



We do it all for you.



# HAPPY'S COACH HOUSE

on New Scotland Rd. 15 miles from Albany

is proud to ANNOUNCE the addition of  
**A New Chef— MR. DICK GROOM**  
formerly with some of the finest restaurants in the Capital District

Dublin Corned Beef & Cabbage 'n' all the Fixin's  
**ALL YOU CAN EAT \$4.95**  
Children under 12 \$2.50

Introducing for the first time  
**AN IRISH SMORGASBORG**

**SATURDAY, MARCH 12**  
and  
**THURSDAY, MARCH 17**

at our *St. Patrick's Day Celebration*

*St. Patrick's Day*

serving from 5:30—10 p.m.  
**OPEN HOUSE**  
(but Reservations Accepted)

Music Thurs. thru Sun by Irish Tom Mahoney Wayne  
9 p.m. til 2—Sunday 6—11 p.m.

Your Genial Hosts—Hap and Esther McTague



Business and Professional Women's Club, Bethlehem Chamber of Commerce, Downtown Task Force (Albany), Albany Institute of History and Art, Albany Symphony and Vanguard. She is also proud of her West Virginia heritage and her degree in business administration from the University of Dayton. She is presently living in nearby Guilderland.

### Ecumenical service

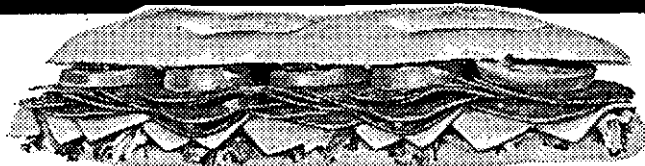
St. Matthew's Church, Voorheesville, will be the setting this evening (Thursday) at 7 for the annual Ecumenical Service sponsored by the New Scotland Kiwanis Club. Participating with Rev. Arthur Toole of St. Matthew's will be Rev. Bowen Hawkins of New Scotland Presbyterian Church, Rev. Sherwood Carver of United Methodist Church, Voorheesville, and Rev. Johannes Meester of New Salem Reformed and Unionville Reformed Church.

### Deadline near on fashion show

The Tri-Village Welcome Wagon's annual luncheon-fashion show will feature clothes from Town and Tweed, Delaware Plaza. Ann Dahne and Susan Dax are co-chairmen of the March 22 luncheon, which will begin at noon with a cocktail hour at the Albany Country Club.

Club members will model spring and summer fashions which have been coordinated by Anne Baxter of Town and Tweed. Commentator for the program will be Helen Rasker, owner of Town and Tweed. Gift certificates for Town and Tweed will be given as door prizes.

The public is invited. Tickets are \$6.50. Reservations must be made by March 14 by calling Ann Dahne, 439-6867, or Susan Dax, 439-7049. Babysitting arrangements can be made by calling Doris Kirk, 439-6515 by March 14.



## SUBMARINES THE CENTER INN

& SPORTSKELLER  
Rt. 9W, Glenmont — 439-2323

We'll make your  
motor  
sing



- \* Engine Tune-up
- \* Front End Alignment
- \* Automatic Transmission Service
- \* Modern Equipment
- \* Skilled Mechanics

## BAILEY'S GARAGE

Phone Delmar 439-1446  
Oakwood Rd., Elsmere

MEN—WOMEN

## Soldiers Wanted.

As you know, we need good, young people who want to serve their Country. We need some to serve it in the United States Army. We may not have a draft. But we still have a need.

Army life is not for every-one. You may get up early in the morning, work hard all day, and hit the sack, dog-tired, long after the sun has disappeared.

But for those who are up to the discipline Army life demands, the rewards are great. Job training. Good pay. Travel. In service educational opportunities. And a chance to grow as an individual.

If you're interested, give us a call. We think you'll be a better person for it.

## Call Army Opportunities

463-1173

Join the people who've joined the Army.

An Equal Opportunity Employer

## Spotlight in retrospect

March 7, 1957

This week's Spotlight cover photo features various phases of Girl Scouting, and depicts Barbara Rubin, a Brownie from Hamagrael School, Janet McCormick, a fifth grader from Elsmere School, Carol Gainor from a Delmar troop, Leslie Brownrigg of Delmar, a member of Albany's only Mariner troop and assisting with a troop in Slingerlands, and Mrs. Allison Vedder, leader of Troop 114, Slingerlands.

March 8, 1962

John Walsh, Joan Kirwin, Susan Boyd, Mary Ann McManamon and James Dunn will compete in the St. Thomas parish eliminations in the Catholic Evidence contest. Preparing for the Diocesan Oratorical contest are Betty Johnson, Susan Reulbach, Susan Graf, Carol Calligeris, Betsy Sullivan and Henry Smith.

March 9, 1967

Members of the Kenaware Park Home Demonstration

Unit will model spring accessories from Ann's Hat Box, Four Corners, Monday at Bethlehem Central High School. Models are Mrs. William Nostrand and Mrs. James Sineck from Kenaware Park and Mrs. Michael Mohoney and Mrs. John O'Brien from Birchwood Acres.

Delmar Lumber and Builders Supply, Inc. advertised a one-cent sale. Among the items is a 3-piece screwdriver set for one cent with purchase of a 23-piece ratchet set for \$13.99.

## Person to person health insurance

It can help pay soaring hospital and surgical bills. Call me.

**ED BERGMANN**  
50A Delaware Ave.  
Delmar  
439-6222



STATE FARM MUTUAL  
Automobile Insurance Co.  
Home Office:  
Bloomington, Illinois

**SPECIAL  
WEEKDAY RENTAL  
RATE OFFER**

# RINSENVAC

The No. 1 do-it-yourself carpet cleaning system in the country. Cleans—and deodorizes—the way professionals do, at a fraction of the cost!

This Special Offer Saves You  
**\$3.00**

Off Our Regular RINSENVAC Rental Rate

Renting RINSENVAC saves you more—much more! This remarkable carpet cleaning system actually does the job professional cleaners charge up to a hundred dollars for.

Valid Monday thru Thursday  
Regular Rates apply  
Friday, weekends.

Offer expires Thurs. March 31  
Regular Rental Rate

**\$12.00 a Day**



## HILCHIE'S AMERICAN HARDWARE

235 Delaware Ave.  
Delmar, N.Y.

**SALE! LIBERTY BELL COLLECTION - 50% OFF**



*NOW EXCLUSIVE DEALER*  
**COMPLETE LINE OF  
KYANIZE PAINT**



# VOGEL WALLCOVERINGS

**YOUR DISCOUNT WALLPAPER CENTER**  
406 KENWOOD AVE.  
DELMAR, N.Y. **439-6335**

• WALL-TEX • IMPERIAL • STRAHAN • SCHUMACHER



**MODERN  
PHARMACY**  
*Michael  
Krugman*

Practically every medical authority agrees that walking properly is the body's best exercise. . . So, every day for 15 minutes, "take a walk" indoors. . . Use your imagination, and, even though you may be right in your own home, imagine that you're out in the country field with colorful flowers and cloudless blue sky (regardless of the weather report.) Let your imagination run free; it's good for your creativity as well as for your body. . . Now, on your feet, standing erect, head up, chin at right angles to your neck, Shoulders back, chest up, tummy in, legs straight with feet slightly apart. . . That should be your standing and walking posture, indoors or out from now on -- it will make you look slimmer and trimmer instantly. . .

There's no problem getting quick prescription service — just call or stop by at KRUGMAN'S DELMAR PHARMACY INC. We always maintain a complete stock of prescription drugs to have them on hand when you need them . . . and when you need us we're here at KRUGMAN'S DELMAR PHARMACY INC., 361 Delaware Ave., 439-9914 from 9 a.m.-7 p.m. Mon. thru Fri., 9 a.m.-6 p.m. Sat. After hours we can be reached at store number or 439-4582.

**Delmar 'cellist returns to play**

Nancy Steltman will play the 'cello at the Albany Institute of History and Art on March 13 at 2:30, as part of their "great artists" series.

Ms. Steltman first studied the violin at age 9 while a student at Bethlehem Central. After graduation from BC she went to Julliard School of Music, where she received bachelor and masters degrees.

She has performed in the New York area, at the Lake George Opera Festival, and was a member of the String Quartet in Residence at SUNY at Stony Brook. She is the daughter of Mr. and Mrs. Charles Steltman, 17 Ridge Rd., Delmar, and is presently a member of the Ars Nova Trio in New York.

**Schools' music drive launched**

The Bethlehem Music Assn. which was formed a few years ago for parents who wish to support and participate in music programs for Bethlehem pupils, is sponsoring a membership renewal drive next week, in conjunction with "Music in Our Schools Week."

Family membership dues are \$1 per year, and persons may join by sending that amount with their name, address and telephone number to PO Box 105, Delmar 12054.

Many special musical events are being held in observance of Music in Our Schools Week, with the first being a concert by the Duke University Chorale this afternoon at Bethlehem Central High School. A complete list of the events was printed in the March issue of

'Central Highlights' and they are also included in the Spotlight Calendar.

Parents are urged to visit their children's schools next week to observe or participate in music classes or lessons.

**Preschool plans for next year**

Bethlehem Preschool is expanding its services, and now is accepting applications for the 1977-78 school year. The preschool is in its third year of offering care for children two-and-a-half through 5. It includes a nursery school, private kindergarten, full and part-time day care, and before-and-after school care for children attending public kindergarten.

The nursery school and kindergarten run from 9:30 a.m. to noon, and the pre-kindergarten class from 1 - 3:30 p.m. Day care is available from 7 a.m. - 5:30 p.m., five days a week, 52 weeks a year.

The non-profit school is directed by Eleanor Howell and Patricia Swanson, and is located in the Bethlehem Center Building on Rt. 9W in Glenmont.



**IRISH NIGHT**  
**at VFW Memorial Post 3185**

**Corned Beef Dinner**  
**"Beer all Night"**  
**Music by IKE & MIKE**

Sat, March 12th  
7:30 p.m.

Donation  
\$7.50

**DiNAPOLI & DiNAPOLI**

New York State



Guild Opticians

457 Madison Ave., Albany — 449-3200  
Mon. thru Fri. 9:00-5:30; Sat. 8:30-1:00

282 Delaware Ave., Delmar — 439-6309

Closed Mon.; Tues., Wed., Fri., 1:30-5:30  
Wed., evening by appointment  
Thurs. 9:00-12:00; Sat. 8:30-1:00



**Rodenstock**  
**Young Look**  
Collection

**Gralton Press**

NEWSLETTERS/BROCHURES  
PROGRAMS/FORMS  
LETTERHEADS/ENVELOPES  
BUSINESS CARDS  
Type Composition and  
Art Service

**439-1691**

**Altar-Rosary elects**

The Altar-Rosary Society of St. Thomas the Apostle Church, Delmar, will elect officers at its March meeting next Wednesday at 7:30 p.m. in the school auditorium. Miss Barbara Oliver will present a slide show of the canonization ceremony of Mother Elizabeth Seton in Rome in October 1975.



Andrew L. Jones

Ed Eilers gets the word on "plantique" from Alison Swanson, greenhouse manager for the Garden Shoppe, at the Tawasentha DAR antique show at BCHS last Saturday.

### Coastal planning new LWV project

Do you care what happens to the land along the Hudson River? Do you want to see the lands developed for commercial or industrial uses? Would you prefer to see the lands developed for residential use? Would you like to see more of the land be used as public recreation areas? Much of the town of Bethlehem's eastern

boundary lies along the banks of the Hudson River and the local unit of the League of Women Voters is concerned about related questions facing Bethlehem residents.

In 1972 Congress passed the Coastal Zone Management Act, which provides financial assistance to states in meeting costs of developing and administering Coastal Zone Management programs and to assist in the acquisition of estuarine sanctuaries. The



at the 4 corners,  
**DELMAR**

A Relaxed and Congenial Atmosphere

*Come in and meet our New Gourmet Cook, BETTY*  
**SPECIAL—Charcoal Broiled Hamburgs  
Steaks & Hot Dogs**

**Daily Luncheon Special** with coffee  
under \$2 w/tax

**Coffee** — You have tried theirs, now try ours!  
Sign for Weekly Drawing — A FREE Meal —  
No Purchase Necessary

**Phone for Takeout Orders** Welcome

Free Parking 5 a.m. — 3 p.m.  
in Town Lot **439-9828** 7 days

# NOW OPEN

**L.C. SMITH**

Lawn and Garden Equipment  
Sales and Service

Selling **TORO**  
**Ariens**  
**Yardman**  
**Homelite**



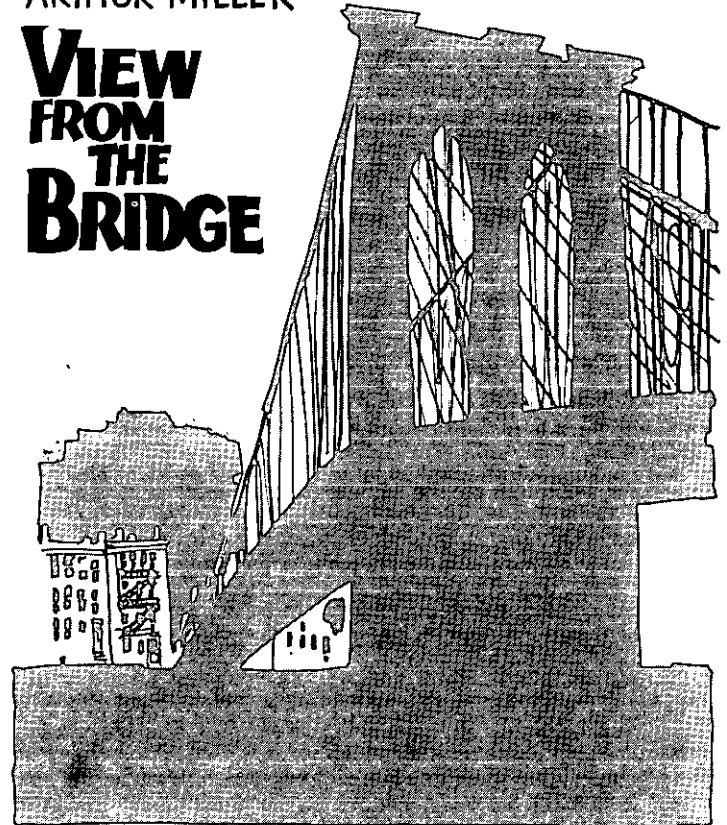
Service on all Lawn & Garden Equipment  
154B Delaware Ave.  
Delmar, N.Y.

**439-9746**

## SLINGERLANDS PLAYERS PRESENT

ARTHUR MILLER

# VIEW FROM THE BRIDGE



DIRECTED BY CAROL KING

**PLAYHOUSE** DELAWARE AVE; UNIONVILLE

MAR 16-20 WED-SUN 8:40E  
1977 23-26 WED-SAT

CALL 434-1777

Hudson River is "estuarine" up to the federal dam in Troy. It has tides of about four feet and has direct access to the sea. As part of the planning process required by this act, the

Capital District Regional Planning Commission has listed these goals: preserve and enhance natural resources, provide for enjoyment of the river area, promote public

welfare and economic well-being, and coordinate regional and local plans and programs with various government and private interests.

Some parts of the shore contain particularly fragile natural features or potential sites of erosion or hazards. Historic sites, transportation corridors, wildlife habitats, energy facilities and Albany's seaport are related to social and economic needs of the entire area.

Bethlehem LWV members were scheduled to make a slide presentation to the town board and members of the town's environmental council on Wednesday of this week at the regular semi-monthly town board meeting. For information, call 439-4226.

#### Heads SUNYA drive

Roy F. McEnerney of Delmar has been named national of the 1977 Annual Fund at State University of New York at Albany. He is vice president and secretary of Executone of Albany, Inc., vice president and secretary of Metroland Communications Associates, and president of MCA Leasing Co.

#### Vanguard luncheon set

Vanguard-Albany Symphony will have a spring luncheon for members and guests March 24 at the Hyatt House. Kitty Carlisle Hart, chairman of the New York State Council on the Arts, will be the speaker.

## Democrats book Dyson to speak

John S. Dyson, New York State commerce commissioner and a controversial spokesman on state government procedures, will be the speaker at the Bethlehem Democratic Committee's annual Jefferson-Jackson Day dinner on March 30.

Burkhard is dinner chairman for the event, to be held at Michael's Banquet House, Latham. Michael Breslin is in charge of the booklet and John Mitchell of advertising. Tickets may be purchased from any committee member.

## DEAN'S LIST

Northeastern University - Michael T. Sullivan, Delmar; Jennifer T. Drew, Delmar.

Stevens Institute of Technology - Richard V. Marriott, Delmar

Jacksonville University - Daniel F. Nattell, Delmar.

Syracuse University - Cynthia K. Kraus, Slingerlands.

Bates College - Carole J. Spelich, Delmar.

University of Hartford - Sharon J. Carnell, Delmar.

State University College at Oneonta - Laurie S. Clark, Delmar.

Hope College - Sharon Lee Carnahan, Glenmont.

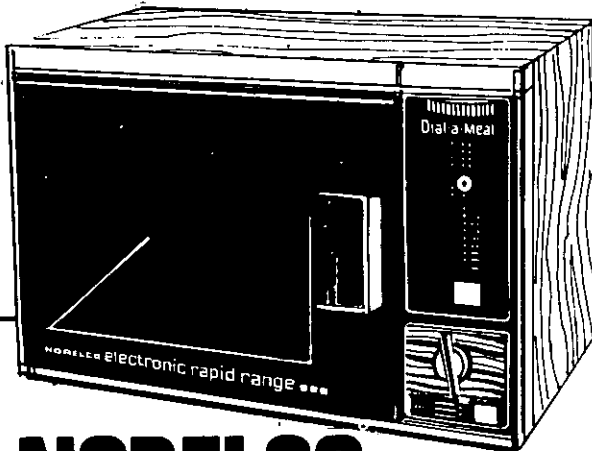
Indiana University - Elaine Marie LaForte, Delmar.

# MICROWAVE COOKING DEMONSTRATION

—sponsored by—  
HILCHIE'S AMERICAN HARDWARE  
—to be held—

MONDAY, MARCH 14, 1977  
7:00 P.M.  
—at the—

BETHLEHEM PUBLIC LIBRARY

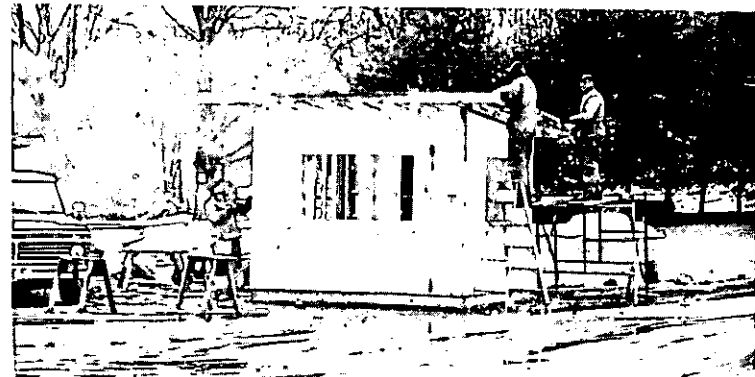


**NORELCO**  
**electronic rapid range™**  
Microwave Oven with Dial-A-Meal™

ADMISSION BY TICKET ONLY  
FREE TICKETS AVAILABLE AT... (limit 150)



HILCHIE'S AMERICAN HARDWARE  
235 Delaware Ave.  
DELMAR



Between snow storms, outside construction continues at the Job Corps. Corps members and visitors will have to sign in and out at this control-point building. Corps members are expected to begin arriving in April, 25 every two weeks until the 275 capacity is reached.





Steve Steele Gets a hand after the backstroke

**SWIMMING**

**Mermen point for state title**

One of Bethlehem Central's best-ever swimming teams will make a strong bid for the New York State championships at the Intersectionals this weekend at West Point. In simplest terms, this means another showdown with Rome Free Academy along with other powerhouses.

The Eagles set two more records in churning to their seventh straight Sectional crown at Albany State last weekend. They scored the most points ever by a single team (103) and took six of a possible 11 firsts.

Coach Jack Whipple's pride, the medley relay team, beat

Shaker by two seconds to earn the trip to West Point. The 400-yard freestyle relay will be there as the result of an unfortunate disqualification of the winning Albany Academy team when an Academy swimmer jumped into the water before the event was finished. Ken Neff, Lorren

**BEDROOM SET**  
solid maple reg. \$1095.00  
**SALE PRICE \$725.00**  
**BURRICK FURNITURE CO.**  
560 DELAWARE AVE., ALBANY, N.Y. 465-5112

**HOLLAND HOUSE**  
**Decorating & Carpeting**  
**20% SALE**  
on Custom Made Drapes,  
Bedspreads, Slipcovers and  
Carpeting  
March 14th—April 4th  
Call BETTINA HUGHES — 872-1637, 765-4077

Area's Oldest and Largest  
**SAAB**  
Dealer . . . with complete parts dept. AND SERVICE!  
Test drive a Saab at  
**New Salem Garage** SAAB INC.  
New Salem, N.Y.  
765-2702

**INDIAN LADDER FARMS**  
**The Apple Experts**

Fresh, crisp MacIntosh, Red Delicious and Idared apples  
Apple Blossom Honey—5 lbs. \$3.75 SPECIAL!!!  
Fresh CIDER from our cider press

Famous hot cider donuts, pies and breads

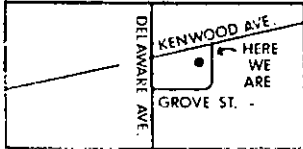
Open 9—5 Tues. - Sunday

Indian Ladder Farms, 2 miles west of Voorheesville on Rt. 156 Phone 765-2956

# BUD JONES SERVICE



**COMPLETE AUTO REPAIRING  
ROAD SERVICE AND TOWING**



- BRAKES
- WHEEL ALIGNMENT & BALANCE
- IGNITION SERVICE
- ELECTRICAL • AIR CONDITIONING
- TIRE SERVICE (JETZON TIRES)
- OFFICIAL NYS INSPECTION
- COOLING SYSTEM PROBLEMS
- GAS TANK REPAIRS
- LUBRICATION

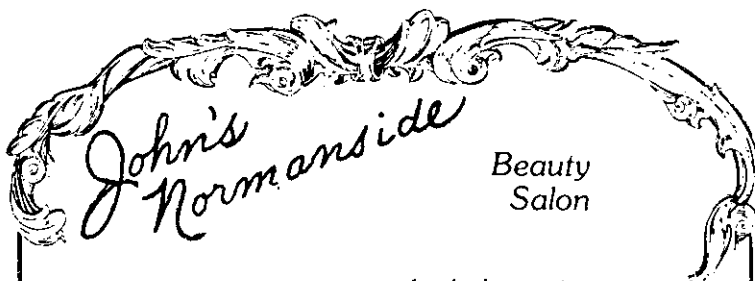
**439-2725**

7:30 a.m.-5:30 p.m. Mon-Fri—Sat. & Sun. Emergency Rd. Service Only  
14 GROVE ST • DEL. M. 12 • N.Y.

**WE'RE OPEN AGAIN!  
ALSCO ANACONDA  
Pre—Season SPECIAL  
FREE**

Your Choice of Styrofoam  
Building Wrap or Window  
Casing Covers  
**WITH EVERY SIDING JOB SOLD**  
**DICK DOMERMUTH**  
**768-2429**

FREE ESTIMATES OFFER EXPIRES APRIL 1st



Is out to prove you don't have to pay **Outrageous Prices** for a satisfactory haircut. So...for the **Month of March** We will give you a **Precision Cut, Shampoo and Blow-dry** for the **UNBELIEVABLY LOW PRICE** of...\$5.95 or a **Regular Cut** for **ONLY...\$2.75!**

**40% OFF Regular Prices**  
OPEN: MONDAY THRU SATURDAY—8a.m.  
ALSO: TUE., WED., THURS., FRI.—EVES.

99 Delaware Ave., Elsmere  
439-5621

Elkins, Tim FitzPatrick and Dave Dean will swim the medley, Mark Delaney, Brian Spindler, Dean and Elkins the freestyle.

Other qualifiers are Neff and Steve Steele, who swept the 100 backstroke, and Elkins, who got a second in the 100-yard breaststroke. Andy Neff took second in the gruelling 500-yard free, followed by Bill Reagan and Paul Lierheimer third and fifth respectively.

## Tomboy signup deadline near

Girl softball players between the ages of 8 and 18 will have their last chance next week to register for the Bethlehem Tomboys summer leagues.

Final registration for the popular program will be held at the Bethlehem Library Saturday from 10 a.m. to 1 p.m. and Monday from 7 to 8 p.m. Players are asked to bring birth certificates. Girls are eligible if they will be 9 before Sept. 30 and will not have reached their 19th birthday by Oct. 1.

There is a registration fee of \$7 for the first member of a family and \$4 for each additional member. The Spotlight inadvertently reported last week that there was no registration fee.

The league will also accept patron donations to be listed in the program in lieu of a door-to-door solicitation for funds. The league is financed primarily by team sponsors, advertisers and individual contributions.

## On Academy stage

Four Bethlehem girls will appear in "Pygmalion" presented by the Albany Academy Drama Society. Sarah and Anne Putney, Karen Beth Mercer and Kristen Reinhardt have roles in this Lerner and Lowe musical. "Pygmalion" will be presented in the Academy auditorium on Friday and Saturday at 8 p.m. Tickets are available at the door.

## GOLDBERG

Model Airplane Parts  
Balsa Wood/Epoxy  
**462-0290**

## A Nurse You Can Trust

To care for someone you love in the hospital or at home, Medical Personnel Pool has highly qualified RNs, LPNs, Aides and Attendants. Each is responsible to our Director of Nursing, each fully insured and bonded. Day, night or around the clock care easily arranged.

**463-2171**

**MEDICAL PERSONNEL POOL**  
90 State St.,  
Albany

**IT'S TIME TO VISIT THE PLEASANT VALLEY GALLERY & GIFTS**  
Featuring elegant crystal china jewelry & much more!  
**Open Sat. & Sun. 12-5**  
**Evenings by Appt.**  
Rt. 156 up the hill from Altamont to Pleasant Valley Rd.—second left beyond Highland Farms Restaurant, Second Farm on right  
**872-1860** **872-2041**

# CLASSIFIEDS

Classified Ads are 15¢ per word (\$1.50 minimum) payable in advance before 4 p.m. Friday for following Thursday publication.

Come in person or mail your ad with check or money order to  
414 Kenwood Ave., Delmar.

**439-4949**

**439-4949**

## APPLIANCES

### Bob Sowers' DELMAR APPLIANCE

Complete Line of  
RCA — WHIRLPOOL — SONY

SALES & SERVICE  
239 Delaware Ave., Delmar  
Phone 439-6723

**VAN DYKE'S NORTHEAST.** GE Major Appliances and TV, Zenith TV & Stereos. 243 Delaware Ave., Delmar. 439-6203. . . . . tf



Authorized Sales  
**DISCOUNT PRICES** with  
PERSONALIZED SERVICE  
CARLETON TV  
439-2926

## CARPENTRY

### Frank Pomakoy General Carpentry

Repairs, Remodeling, Roofing, Ext. Painting, Additions, Kitchens, Bathrooms, Paneling, Playrooms, Ceilings, Floors.

Free Estimates **767-9460**

**CARPENTRY** — Repairs and remodeling. Handiwork, attics and basements. Local references. Kevin Gilday 439-5502. . . . . tf

### BOB KIBBEY CONTRACTING 438-1721

Shingle/Roll Roofing  
Kitchen/Bath Remodeling  
Patio/Porches • Garages/Dormers  
Int./Ext. Painting • Plumbing  
Basement Rooms • Repairs  
FREE ESTIMATES — REFERENCES

**CARPENTER**— does repairs, remodeling. Interior & exterior painting, paper hanging, odd jobs welcomed. 872-1662.

## FLOOR COVERING

Complete line of Armstrong carpeting and vinyl floors. 439-4751, 439-4468

### Furniture Refinished

#### ANTIQUE OR MODERN FURNITURE REPAIR SERVICE

Repairing — Refinishing

Telephone 439-7700 If no answer Call 439-1800  
154 Delaware Ave., Elsmere

**FURNITURE REPAIRING**, reasonable, free estimates. **Burrick Furniture 465-5112.** . . . . . tf

## INTERIOR DECORATING

### KECK'S DRAPERY CO.

Custom Draperies,  
Slip Covers, bedspreads.  
Large Fabric Selection  
Attractive Prices . . .  
Home Service  
Call **JOAN KEMMER 869-0589**

### DRAPERIES

Fabric Selection  
Bedroom Ensembles  
Home Service  
Draperies

Custom made by Barbara  
Call **872-0897**

## MASON WORK

### ALL TYPES MASONRY

NEW — REPAIRS  
26 Years Experience

Chimneys, Fireplaces, Stoops, Walks, foundation repairs & waterproofing etc.  
**PROFESSIONAL WORK WITH INTEGRITY**  
Serving this Community for years with  
Pride — Satisfaction Guaranteed

**F. JOSEPH GUIDARA —**  
**439-1763 — Evenings**

**MASONRY AND CARPENTRY** of all types. Over 20 years experience. **William Stannard, 768-2893.** . . . . . tf

## Painting & Paperhanging

### VOGEL PAINTING CONTRACTOR

Interiors — Exteriors  
PAPERHANGING

COMMERCIAL SPRAYING  
Free Estimates — Guaranteed  
INSURED **439-7922**



**ROGER SMITH PAINT AND PAPER**  
SEE HOW AND SAVE  
278 Delaware Ave.  
439-4468 — 439-4751

**Don Vogel Painting Contractor.** Interior, exterior, paperchanging, repairs. 20 years experience. 489-0989, 489-7914. . . . . tf

### COMMERCIAL — INDUSTRIAL D.L. CHASE



Painting Contractor

Residential Specialists

Phone 768-2069

## PATRONIZE

Spotlight Advertisers

## PLUMBING

**B. P. WOOD Plumbing & Heating**  
24 Hour Service  
Phone 439-9454

**ABLE PLUMBING SERVICE**  
I do all types of Plumbing & Heating  
Repairs & Installations  
Bathroom & Kitchen Remodeling  
Drain Cleaning  
FREE ESTIMATES • LOW PRICES  
SERVICE ANY DAY ANY HOUR  
**GENE BAZAR — 465-4078**  
572 Delaware Ave.

## PUPPET SHOWS

**ELIZABETH CONLEY'S** Portable Poppets' Playhouse. Puppet shows for parties, schools, fairs, dinners, etc. 439-3080. . . . . tf

## SEPTIC TANK SERVICE

**NORMANSKILL SEPTIC TANK** Cleaners. Systems installed, Electric Sewer Rooter Service. 767-9287. . . . . tf  
**DELMAR SANITARY** Cleaners, service Tri-Village Area, over 20 years. 768-2904.

## SHARPENING SERVICE

**SKATES/SKIS SHARPENED.** Also saws, scissors, knives, lawnmowers, garden tools. 439-5156 or 439-3893. . . . . tf

## SNOW THROWERS

**ARIENS, TORO** — Sales & Service at **MEYERS BICYCLE CENTER**, 1958 New Scotland Rd., Slingerslands. 439-5966. . . . . 9t1230

## CROSS COUNTRY SKIS

### CROSS-COUNTRY SKIS

Sales — Rental  
Service!

**MEYERS BICYCLE CENTER**

1958 New Scotland Rd. — 439-5966



## TREE SERVICE

**HERM'S TREE Service**, Call IV2-5231  
**REAGAN'S TREE SERVICE**, removal, trimming, cabling. Emergency service, insured. 439-5052. . . . . tf

## HORSES BOARDED

### TORCHY'S TACK SHOP

Jericho Rd., Selkirk  
**RO 7-2701 • RO 7-2468**  
Mon.-Sat 9-9

Boarding & Training Stables  
Riding Supplies & Saddles  
Lessons • Indoor Arena

## PERMANENT WAVING

**SPECIALIZING IN Brock, Realistic** Flavette and Caryl Richards permanents, hair tinting and bleaching. **Mele's Beauty Salon**, Plaza Shopping Center. 439-4411

## Home Improvements

**Tile Work** Ceramic and Asphalt, Bathroom, Kitchen, Playroom. Office. 439-7094 eves 31324

## REMODELING—REPAIRS—ROOFING



BOB MARRIOTT

**MARRIOTT CONSTRUCTION**  
GENERAL CONTRACTING 439-4675

## FIREPLACE WOOD

**EXCELLENT FIREWOOD.** Ash, oak, maple, hickory. Will deliver. 768-2874. .... tf

**SEASONED HARDWOOD** cut and split to order. Delivered and stacked at your convenience. \$35.00 face cord, \$85.00 full cord. John B. Geurtze, Jr., 434-8903. .... 4133

## MOVERS

**DAN DONNELLY MOVING** and trucking. Delivery service. Free estimates. 767-2711.

## Sewing Machine Repairs

**Sewing Machine Repairs**  
by Well Known **John Besson**

- All makes of Sewing Machines
- Free estimates in your home
- Guaranteed for one year  
463-2520

## RESTORATION

### INVISIBLE REPAIR

Furniture, antiques, fine porcelain, statues, figurines, oil paintings, glassware, metalware, frames, lamps, any valuable or keepsake.

RESTORERS OF AMERICA  
756-9600

## ROOFING

### ROOFING



Asphalt. Slate. Built-up. Wood Shingle. Gutters. Ice Slides. Repairs. Insured. Guaranteed.

FREE ESTIMATES  
**VANCANS**  
439-3541

For A FREE Estimate On

**A NEW ROOF**  
Cyrus Shelhamer Roofing

- SNOW SLIDES
- GUTTERS
- TRAILER ROOFS

INSURED  
REFERENCES  
767-2334

Can't Decide  
Who to Call  
To Do Your  
ROOF?



Why not call the company  
"where superior workman-  
ship still means something."

**VANGUARD  
ROOFING CO.**

Free Estimates Fully Insured  
Call JAMES S. STAATS  
767-2712

## SIDING

**Dick Domermuth  
ALUMINUM  
SIDING & TRIM**

Our 26th Year  
768-2429

## TRASH REMOVAL

**B.P.W. REFUSE SERVICE**, residen-  
tial & commercial. 439-5569. .... tf

**CHARLES N. WHITING  
TRASH REMOVAL**

Garage Cleaning. Attics and Cellars Cleaned  
LIGHT HAULING • TREE REMOVAL  
439-2372

## TAILORING

GENERAL  
TAILORING  
FOR THE  
ENTIRE  
FAMILY



**ARI ISOLINO MENSWEAR**  
Mon.-Wed. & Sat. — 9:30-6  
Thurs. & Fri. — 9:30-9  
163 CELAWARE AVE. opposite Plaza  
439-2148

## TRUCKING

**LIGHT TRUCKING  
TREE SERVICE  
ATTICS & CELLARS CLEANED  
AND INSULATED**  
Phone Mark 439-1692

## WATCH REPAIRING

**EXPERT WATCH AND JEWELRY  
REPAIRS.** Diamond settings, engraving wedding and engagement rings, reasonable, your trusted jeweler, Le-Wanda, Delaware Plaza Shopping Ctr. 439-9665.

**WATCH REPAIRING**, expert work-  
manship. All work guaranteed. Also  
engraving, diamond setting watch  
bands. Harry L. Brown, Jeweler, 4  
Corners, Delmar. 439-2718.

## BLACKTOP

"Our Prices Are Reasonable"

**LIUZZI BROS.**  
**SPRING SPECIAL**  
10% Disc. Apr. 1 thru 22

Call now for free estimate  
**869-6973**

Also Gilsonite or  
Jennite, J-16 Sealer

**SATISFIED CUSTOMERS ARE  
OUR BEST RECOMMENDATIONS**

## Merchandise for Sale

**Ginseng!** Chinese herb once prized  
more than gold, in convenient  
capsule. Try "Asianroot", PLAZA  
PHARMACY, Delmar. 2t317

**Garage Sale** 3/12, 3/13. Rt. 9-W and  
Thatcher St. (Dibb's Bridge),  
SELKIRK.

**1971 Buick Skylark** 4 door Sedan,  
17,000 miles 439-9420.

**Baby Furniture** Maple Book case  
headboard and Bed. 439-5480

**Grapefruit Plan** with Diadax, eat  
satisfying meals and lose weight,  
now extra strength formula. PLAZA  
PHARMACY, Delmar.

**Sofa Bed** Used 439-4055

**Sofa** Mint Cond., 90" Fr. Prov. Gold  
Cut Velvet, Lamps, 20" bike.  
439-3921

**ZINC!** from Harvestime Nutri-  
tionals...the mineral associated  
with healing, now at Plaza  
Pharmacy, Delmar.

## SITUATIONS WANTED

**PRIVATE BARTENDING** for all  
occasions 439-2875 tf

**Fashion Merchandising Manage-  
ment Student** seeks part-time work  
in Tri-Village area. Hard working,  
willing to learn all phases. Please  
call 439-9108 after 3:00 tf

**Child Care** in my home. Enjoy  
children, Experienced 439-6147  
2t310

**Delmar Woman** wishes housework.  
Wednesday mornings. Capable  
Reasonable, Box "H" c/o Spotlight,  
Bx. 152, Delmar, N.Y.

**Housecleaning Jobs** Wanted. own  
Transportation. Jeanne 439-1694

Are you **TIRED** of  
housecleaning?

I will relieve you of that  
daily chore!!

Reasonable-Dependable-The Best  
CALL

456-0945 eves.

**Bookkeeping-Part-Time** Payables,  
Receivables, Payroll, Petty Cash,  
Bank Recon., Journals, References.  
439-8637.

## HELP WANTED

### AVON

**WHY PUNCH A TIME CLOCK  
WHEN YOU DON'T HAVE TO?**

As an Avon Representative, you make your  
own hours—run your own business. Earn the  
money you need by selling quality products.  
Call Mrs. Calisto. 785-9857

Are You Free  
to travel?

**Joanne Kimberly  
Party Plan**

Has Several Full-Time  
openings in our Local  
Office. Party Plan Experi-  
ence Helpful.

Salary and Expenses PLUS  
No Demonstrating Involved  
**JOANNE KIMBERLY  
JEWELRY**

P.O. Box 5285  
Roesseville Branch  
Albany, N.Y.  
12205

## PART—TIME POSITION

Position available to  
assist in operation of  
Employee Store. Includes  
Sales, clerical duties and  
some bookkeeping. Total -  
10 hrs. per week on Mon.-  
Wed.-Fri. Afternoons.

For Personal interview call  
Theresa Guglielmo—439-9341  
Mon.-Fri./ 8:30-4

Owens-Corning Fibreglass Corp.

An Equal Opportunity Employer M/F

**JOANNE KIMBERLY JEWELRY**  
Party Plan is expanding and has  
openings for dealers. Work your  
own hours. Highest commission.  
Excellent Hostess Plan. No delivery  
or collection. Car and Telephone  
necessary. Call Carol Day 489-4420  
betw. 8:30-5:00 or write, Joanne  
Kimberly Jewelry Plan, P.O. Box  
5285, Roesseville Branch, Albany,  
N.Y. 12205 4t331

## Business Opportunities

### ?UNDERPAID?

Natural and Organic  
Products have over 1,000  
people earning \$1,000+ per  
month part-time, and over  
100 people earning \$1,000+  
per week.

The main requirement is  
leadership ability, not money

Write: **BOX 125**  
Delmar, N.Y. 12054

**ANTIQUES**

Antique Mart in the Mayfair Bldg., Central Ave., Albany. Sundays 10-6. Under new management. Dealer space available. Additional Dealers weekly. Call 439-4549 or 438-5167 4T324

**TILE**

Remodelling — Kitchen and Bathroom Ceramic Tile — Electrical — Free Est.  
**HELDERBERG TILE CO.**  
WESTERLO, N.Y. 12193

Tub Enclosures Plumbing  
Call Don 872-0853

**WANTED TO BUY**

**WANTED**



Old Dolls, Old-Fashioned Dresses & Blouses (In white only)  
ALSO: Old-Fashioned Christmas Tree Ornaments

CALL 463-0804 (anytime)

**Tennis Rackets**  
Restrung — Regripped

**Violins Repaired**  
**Bows Reaired**  
**C. M. LACY**

3 Becker Terrace — 439-9739



SCOUT II, TRAVELER, TERRA

**H. L. GAGE SALES, INC.**  
Altamont, New York  
861-8521 · 861-6604 · 861-6247

**ANSWERING SERVICE**

**BUSINESS & PROFESSIONAL**

Telephone Exchange  
24 hours a day

CALL  
439-4981



Rt 9W  
RAVENA  
756-2241

**TRY OUR NEW SALAD BAR**

- Family Sirloin (for 2) \$10.95
- King Sirloin \$8.95
- Prince Sirloin \$6.95
- Princess Sirloin \$5.95

— INCLUDED ARE —  
SALAD BAR, Cheese, Crakers, 2 Vegetables, Choice of Potato, Rolls and Butter

**NEW HOURS:** Open every day—  
Dinner served 5 to 9:30 Mon. thru Thurs.  
Friday and Saturday 'till 10:00  
Sunday—1 to 8 p.m.



**ATTENTION**

**BETHLEHEM CENTRAL TEACHERS AND OTHER PERSONNEL**  
Now Available

Tax Sheltered Flexible Annuities;  
Current Interest Payment - 8.1%  
(Guaranteed Rate - 3 1/2%)  
CALL: CHARLES E. BRYANT  
457-1584—439-4072

The Travelers Insurance Company  
and Affiliated Companies  
Hartford, Conn.

**UNIQUELY WEEKLY**

Subscribe to

**The Spotlight**

for professional news coverage of Delmar, Slingerlands, Voorheesville, Glenmont and nearby communities.

**\$5.00 a year — 2 years \$8.00**

Towns of Bethlehem and New Scotland and City of Albany

All other Subscriptions \$7.00 year

SPOTLIGHT, 414 Kenwood Ave., Delmar, N.Y. 12054

Please enter my  renewal  new subscription to the Spotlight. I have enclosed \$5.00 for the next year, \$8.00 for the next two.

NAME \_\_\_\_\_

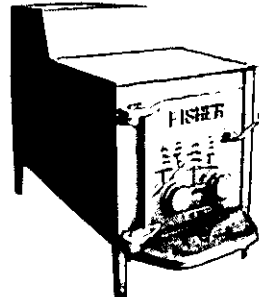
STREET ADDRESS \_\_\_\_\_

P.O. \_\_\_\_\_ ZIP \_\_\_\_\_

**STOP. WORRYING** about your HEAT SUPPLY  
Use Plentiful Fuel and Save up to 50%

with the sensational NEW

**FISHER WOODBURNING STOVE**



- Height ..... 30-3/8"
- Width ..... 18-3/8"
- Weight ..... 410lb.
- Wood ..... 30" long
- Heats ... 14,000 cu.ft.
- Burns ... 12-14 hours

You can completely heat homes up to 2000 sq. ft. with one unit and cook on it as well

- Built to last a lifetime
- Revolutionary, patented design using firebrick lining
- Burns up to 14 hours on one filling

Stop by and see an operating model in our showroom.

**NORTHEAST WATER EQUIPMENT SUPPLY CO.**  
**STOVE SHOP DIV.**

Rt. 9—W just north of Wemple Rd., Glenmont

463-3845  
If no answer 439-3323

Hours: 9-6:30 weekdays  
10-5 Saturdays  
Also by Appointment

## Real Estate for Rent

**Delmar 4 Corners** Large 6 rm Flat upper, 2 bedroom. All appliances, including washer/dryer. \$225/mo. plus utilities. References required. Available March 15. 439-4582.

**Large 6 Rm. Flat Upper** Lr. Dr., Kit., Sun Rm., 2 br. full bath, Fireplace, garage, near Four Corners, Delmar. \$235.00/mo., Plus Heat & Utilities. References Required, March 1st Occupancy. 439-9927.

**PROFESSIONAL OFFICES**-(2) in Pleasant, landscaped older building, centrally located on Delaware Ave. Elsmere. Off-Street Parking, Utilities, Modest Cost. Phone 439-4903.

**REIDSVILLE** 5 room house. Garden Appliances, April 1st Rent or Buy 872-0759

**DELMAR 4 CORNERS** block, large 1-bedroom apartment, modern kitchen/dining area, living room, see to appreciate for March 1. 482-3307 or 370-0697

## Real Estate for Sale

**CENTRAL DELMAR**, 3br., Lr./fireplace, Dr., Kit., 1st floor laundry, Patio and Deck, Garage. \$35,900 439-9295.

**DELMAR**, Fine choices available now. All styles, all in excellent locations at all prices. For information call Sonja Braun Realty. Phone 439-4943.

**3 BEDROOM RANCH** Full Basement(on Sewer), Attached Garage, LG. Corner Lot, Near School, Library, and transp. Owner 439-5157.

### Karen DeFlumer wed

The wedding of Karen Anne DeFlumer, daughter of Mr. and Mrs. Carl DeFlumer of South Bethlehem, and Clifford James Deering, son of Mr. and Mrs. Albert Deering Sr. of

Coeymans Hollow, took place Oct. 23 at St. Patrick's Church, Ravena, Rev. Fr. Tita officiating.

The bride was given in marriage by her father. Her sister, Leslie J. Pollicino of Menands, was matron of honor. Bridesmaids were Melissa and Martha McGee of South Bethlehem, nieces of the bride, Laurie Church of Coeymans Hollow and Terri Marr of Selkirk.

William Zable of Coeymans Hollow was best man. Ushers were Albert Deering Jr. of Coeymans Hollow, brother of the groom, Neil Pollicino of Menands and Martin Wilson of Ravena.

Both the newlyweds are 1974 graduates of Ravena-Coeymans-Selkirk Central School. Mrs. Deering is a clerk for First Albany Corp., Albany. Her husband is a carman for Conrail in Selkirk.

Following a reception at Bartke's Restaurant, the couple left on a wedding trip to Waikiki Beach, Hawaii. They are residing on Elm Dr., Selkirk.



Mrs. Timothy F. Tobin

### Lisa Becket bride

Lisa Ann Beckett and Timothy Francis Tobin were married on Dec. 31 in an evening ceremony at St. Teresa of Avila Church, Albany. The bride's parents are Mr. and Mrs. Robert W. Beckett, 59 Wisconsin Ave., Delmar, and the groom's parents are Mr. and Mrs. Thomas F. Tobin of Albany.

Patricia Fiato of Delmar was the maid of honor and Thomas J. Tobin was best man for his brother. Attendants were Karen Tobin of Albany, sister of the groom, and David Beckett of Delmar, brother of the bride.

Mrs. Tobin is a graduate of Bethlehem Central High School. The groom was graduated from the Albany Academy and Franklin and Marshall College. They are employed by State Bank of Albany.



Mr. & Mrs. Clifford Deering

## HOUSE FOR SALE

**3 Bedroom Cape Cod**  
Very Good Condition — Oil Heat  
**\$39,500**  
Owner — 439-6364

## REAL ESTATE



### DIRECTORY

#### Local

Cohn Yaguda Cronin — 439-7657  
321 Delaware Ave.

Klersy Realty Inc. — 439-7601  
282 Delaware Ave.

Philip E. Roberts Inc. — 439-9906  
190 Delaware Ave.

Scarborough Realty Inc. 439-9306  
Elm Avenue

#### Area

DeL. Palmer, Inc. — 434-0181  
111 State St., Albany

Picotte Realty, Inc. — 489-8551  
1215 Western Ave.



## DUANESBURG

Secluded 30 Acre Farm  
with 20 Mile View  
Nice Living Room with  
Log-Burning Fireplace  
3-4 Bedrooms, Modern  
Kitchen, 1½ baths  
Drilled Well, 2 Barns

**\$49,500**

**WILBER**  
518 - 895-2385

## BIRCHWOOD ACRES

Classic 4 Bedroom, New England Colonial with Authentic Early American detailing throughout. Features spacious living room with fireplace, formal dining room, modern kitchen, paneled family room with beamed ceiling and fireplace. Enclosed Porch overlooks park-like backyard. 2½ baths, 2 car garage ..... \$73,900.00

**PAGANO**

**WEBER**

**REALTORS**  
**439-9921**

264 Delaware Ave., Delmar



## KLERSY REALTY, INC.

282 Delaware Ave.  
439-7601

For **ALL** your **REAL ESTATE** needs including relocating you anyplace in the U.S. and Canada.

**PERSONAL, PROMPT,  
PROFESSIONAL SERVICE**

## Vox Pop

*Vox Pop is open to all readers for letters in good taste on matters of public interest. Letters over 300 words are subject to abridging by the editor. All letters must be signed but names will be withheld on request.*

### Delmar School

Editor, The Spotlight:

Mrs. Hosey's recent letter to the Spotlight suggesting private development for the Delmar School was excellent. However, if private development is not forthcoming, I would like to suggest that the site be developed by the town as a community center.

The structure has adequate space and parking to become the town hall, while the current town hall could be used as a historical museum. In addition to town offices, the facility could be used to support community meeting rooms, a

community theatre, a health clinic, fund-raising suppers, business and professional meetings, service organization meetings, exhibits and a host of other community activities now scattered throughout the town.

I would like to suggest that the town government investigate what other communities have done in developing community centers and commission a study by an architectural firm to determine costs and options. I would also suggest that the study be done by a firm which does not do business with the town, in order to avoid any conflict-of-interest problems.

With a little imagination and not too much money, I believe the Delmar School can adequately serve as a fine community center.

*Dominick DeCecco*

Slingerlands

Is Your Ad in the  
SPOTLIGHT?  
CALL 439-4949

## VOORHEESVILLE CARPET CO.

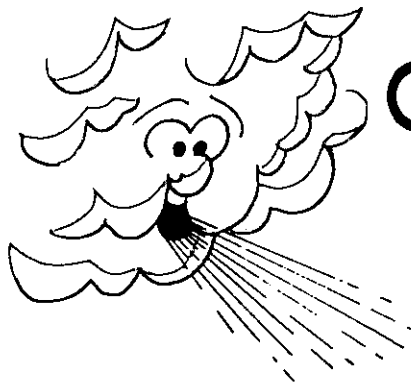
Corner So. Main and Voorheesville Ave.

**Opening a New Showroom**  
**We Carry Brand Name**  
**Carpets and Linoleum**  
**Expert Installation for Over 15 yrs.**

*Come in and talk over your flooring needs*

**We Promise**  
**to Save You Money!**  
**765-4489**

*Open 9-6 Mon.-Sat., Eves. by Appt.*



## Community Corner

### The Bloodmobile is Coming

The Red Cross Bloodmobile will be at Bethlehem Central High School girl's gymnasium next Thursday from 10:30 a.m. to 4:30 p.m. Your donation of blood may save someone's life. It is the most precious gift you can give.

The Red Cross Blood Center on Hackett Blvd. and Clara Barton Dr., Albany, is open Monday through Friday, 9 a.m. to 3 p.m. Interested donors may call 462-7461 to make an appointment.

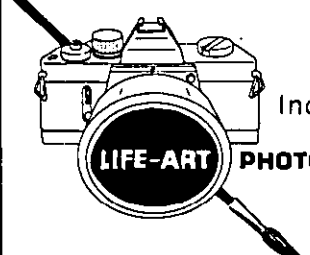
*Community Corner, a public service column of important community events, is sponsored by*



# City & County Savings Bank

Member FDIC

163 Delaware Avenue, Delmar • (Opposite Delaware Shopping Plaza) • 439-9941



Natural / creative photographs of:  
 Individuals / groups / children  
 Commercial and industrial subjects  
 Fashion models  
 Sports events  
 Weddings

Box 147, R.D. 3,  
 Selkirk, New York

(518) 767-9798

*Leonardo Hair Designers*  
 Josephine, Tom, Richard and  
 Rosemary  
 Delaware Avenue (Located Behind Mullen's Pharmacy)  
 PHONE 439-6066

"Precision Haircuts for the Woman Who Cares"  
 General Hair Removal  
 Permanent Eyelashes and Nails  
**HAIRSTYLING**  
 for -  
**MEN, WOMEN AND CHILDREN**  
 Tuesday & Wednesday Specials  
 on Permanents

**NEW CUSTOMERS**  
**FROSTINGS** \_\_\_\_\_ **\$24.95**  
**Wed., Thurs.,** **OPEN 6 Days A Week** **& Fri. Evenings**

**WHEN BUYING A**  
**USED CAR**

*See Us*  
**For These Reasons**

1. Always a Fine Selection
2. One Owner Trade-Ins
3. Consistently Priced Below Competition
4. Fully Guaranteed

★ THIS WEEK'S ★  
**SPECIAL**

**'71 DUSTER**

2 DOOR, HARDTOP,  
 6 CYL., AUTOMATIC  
 POWER STEERING

**\$695.00**

**BUD KEARNEY, INC.**  
**FORD • MERCURY • TRUCKS**  
 Rt. 9W, Ravena - Open Evenings - 756-2105



**CHEROKEE BASKETS & WOOD CARVINGS**

Silver and Turquoise jewelry  
 beadwork jewelry, pottery, rugs, books,  
 baskets, paintings, carvings, dolls.

**American Indian Treasures**  
 ONLY AUTHENTIC ARTS & CRAFTS SINCE 1967

2558 Western Ave., Rts. 20 & 146  
 Guilderland, N.Y. 12084

HOURS:  
 Tues.-Sat.  
 10 to 5  
 Thurs. 'til 9

• Master Charge • BankAmericard



Mary Wasserbach  
 451 Delaware Avenue  
 Delmar, New York  
 12054  
 9-7890-15