

# The Spotlight

July 24, 1980  
Vol. XXVI, No. 28

25¢

*Graphic newsweekly serving the towns of Bethlehem, New Scotland and nearby communities*



## Bethlehem Democrats pack wallop

Page 9

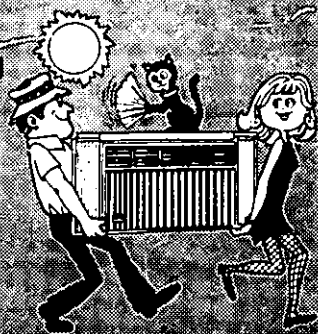
DO NOT CIRCULATE  
*Hometown 'country'*

Page 25

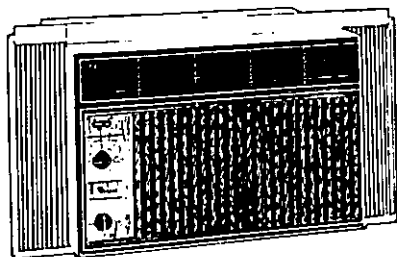


**New book features historical architecture** Page 12

# Why simmer all summer?



Enjoy a Whirlpool room-size air conditioner!



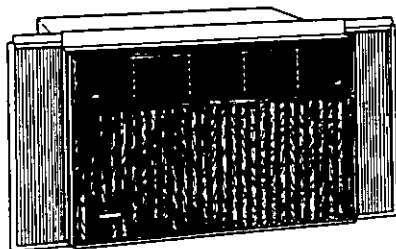
**5,000 BTU/Hr.**

• **HIGH-EFFICIENCY** • 115 volt • 2-speed fan • 2-way air direction • Air changer control (exhaust) • Energy Saving Options (intermittent fan and adjustable thermostat) • **COMFORT GUARD**® control helps maintain comfort level you select • Insta-Mount for fast installation

Model AGJ-P05-2

NOW GOING  
FOR A COOL

**\$239<sup>95</sup>**



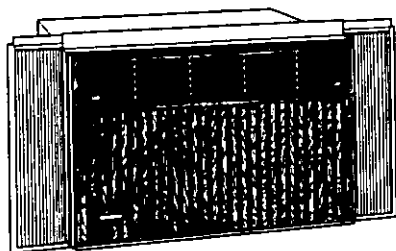
**8,000 BTU/Hr.**

**HIGH EFFICIENCY** • 115 volt • Deluxe Front • 3-speed fan • Energy Saving Options (intermittent fan and adjustable thermostat) • Air Changer control (exhaust) • Insta-Mount for fast installation • **COMFORT GUARD**® control helps maintain comfort level you select

Model ADF-P80-2

NOW GOING  
FOR A COOL

**\$359<sup>95</sup>**



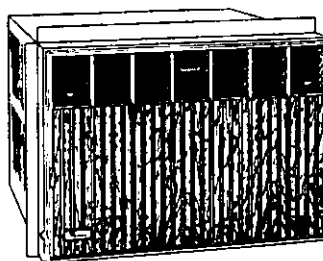
**10,000 BTU/Hr.**

**HIGH EFFICIENCY** • 115 volt • Deluxe Front • 3-speed fan • Energy Saving Options (intermittent fan and adjustable thermostat) • 2-way air direction • Air Changer control (exhaust) • Insta-Mount for fast installation • **COMFORT GUARD**® control helps maintain comfort level you select

Model AGF-100-2

NOW GOING  
FOR A COOL

**\$399<sup>95</sup>**



**13,500 BTU/Hr.**

**HIGH EFFICIENCY** • 115 volt • Deluxe Front • 3-speed fan • Energy Saving Options (intermittent fan and adjustable thermostat) • 4-way air direction • 2-way air control (Exhaust/Fresh Air) • Slide-out Chassis for faster installation • **COMFORT GUARD**® control helps maintain comfort level you select

Model AHF-135-2

NOW GOING  
FOR A COOL

**\$499<sup>95</sup>**

Keep your cool without getting burned! Buy a Whirlpool unit today!

243 Delaware Ave.  
Delmar  
Parking in Rear  
Mon.-Thurs. 10-7  
Fri. & Sat. 10-5

**Van Dyke's**

APPLIANCES 439-6203



## Spotlight CALENDAR

**THURSDAY, JULY 24**

Film, "Magic of Lassie," Bethlehem Library, 2 p.m.

Film, "The Making of Star Wars," Bethlehem Library, 7 p.m.

**FRIDAY, JULY 25**

**Punkintown Fair**, family fun at the New Salem Fire Dept., Rt. 85A, 7 p.m.

**Recovery, Inc.**, self-help organization weekly meeting, First United Methodist Church, 428 Kenwood Ave., Delmar, 12:30 p.m.

## The Spotlight

(USPS 396 6-90)

*Editor and Publisher*  
Nathaniel A. Boynton

*Advertising / Printing*  
Susan E. Moore  
George Bloodgood, Jr.

*Office Manager*  
Arline M. Holder

*Contributing photographers:*  
Cheryl Marks, J.W. Campbell,  
R.H. David, Lyndon Keyes

*Sales representatives:*  
Jerry Gordon, James Sullivan,  
Joan Serfaty

*Production*  
Irene Derreberry, Prod. Mngr.  
Ann Brink  
Martha Preminger  
Caroline Terenzini

*Subscriptions*  
Beth Bloodgood

*The Spotlight is published each Thursday except the third week of February, the first week of July and the first week of September by Newsgraphics, Inc., 414 Kenwood Ave., Delmar, NY 12054. Second class postage paid at Delmar, NY. News and ad copy deadline: 4 p.m. Friday for the following issue.*

*Subscription rates: Albany County, one year \$6, two years \$10. Elsewhere, one year \$7. Send address changes to: The Spotlight, P.O. Box 152, Delmar, NY 12054.*

MEMBER NEW YORK PRESS ASSN.  
Phone 439-4949

**FRIDAY, JULY 25**

**Glenmont Firemen's Fair**, Glenmont Rd., 7 p.m.

**Farmer's Market**, St. Thomas parking lot, Delaware Ave., Delmar, 9 a.m.-1 p.m.

**SATURDAY, JULY 26**

**Glenmont Firemen's Fair**, Glenmont Rd., 7 p.m. Flea market 9 a.m. till dusk.

**Punkintown Fair**, family fun next to the New Salem Fire Hall, Rt. 85A. Special \$1.99 beauty contest for the 18-80 set, 6:30 p.m.

**Capital District League Baseball**, Delmar Blue Jays vs. Colonie Shamrocks, doubleheader, BCHS field, first game 12:30 p.m.

**Country Western Dance**, Ladies Auxiliary of New Scotland Elks, Sunset Park, New Scotland, buffet 7 p.m.

**SATURDAY, JULY 26**

**Teen Writing Workshop**, Bethlehem Library, 10:30 a.m.-12 noon. Pre-registration required.

**SUNDAY, JULY 27**

**School House Museum**, Clapper Rd. and Rt. 144, Cedar Hill, people's collections on exhibit, 2-5 p.m.

**MONDAY, JULY 28**

**Public Hearing**, Bethlehem town board, on the establishment of South Albany Sewer District, Bethlehem town hall, 7:30 p.m.

**Adult Writers Workshop**, Bethlehem Library, 6:30-8:30 p.m. Pre-registration required.

**Film**, "The Sound of Music," Bethlehem Library, 7 p.m.

**Assemblyman Larry Lane's** district office, 1 Becker Terr., Delmar, open 10-3.

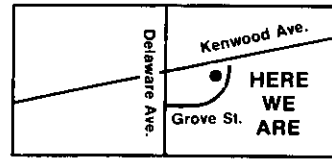
# BUD JONES

## SERVICE

**Complete Auto Repairing  
Road Service and Towing**



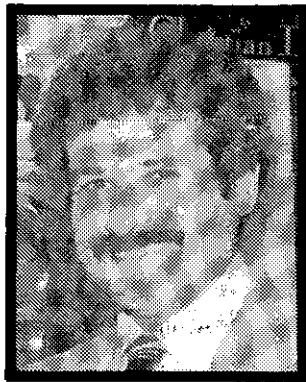
14 Grove St., Delmar, NY



- Brakes • Lubrication
- Wheel Alignment & Balance
- Ignition Service
- Electrical • Air Conditioning
- Dyno Tuning
- Foreign Car Service
- Cooling System Problems
- Gas Tank Repairs

7:30 a.m. - 5:30 p.m. Monday - Friday  
Saturday & Sunday Emergency Road Service Only

**439-2725**



Tom Hughes

## BUENAU'S OPTICIANS INC.

71 Central Ave.  
Albany

**434-4149**

• 9-5 Daily  
9-7 Thurs.

Empire State Plaza  
Albany

**465-1088**

8-5 Daily

228 Delaware Ave.  
Delmar

**439-7012**

8:30-5 Daily  
8:30-7 Thurs.



Mike Buenau

# 3rd ANNIVERSARY SUMMER SALE

**\*GET A PAIR OF SUNGLASS FRAMES FOR 1¢**

Buy the lenses and the tint, and get the frames for **only 1¢!** (on selected frames)  
Offer good until Labor Day 1980.

**\*25% OFF NON-PRESCRIPTION SUNGLASSES**

**\*SALINE SOLUTION SALE! \$1.59**

Stock up now! For only \$1.59 you can get: an 8 oz. bottle of saline solution, a 3 week supply of enzymatic cleaner, and a travel case!

**\*DRAWING FOR MEN'S & WOMEN'S  
NON-PRESCRIPTION SUNGLASSES**

**\*DRAWING FOR BAUSCH & LOMB  
SOFTLENSES VALUE \$64.95**

**COMPLETE  
OPTICAL SERVICE**

July and August Closed Sat.

# What A Combination!

## High Interest **FREE GIFTS!** Super Service

National Savings Bank has a present for you! Open a new savings account between now and August 2, 1980, and take your pick of these valuable gifts:

With a \$200 or \$1000 deposit:

- A) Corning Ware® 6½" covered skillet.
- B) Beacon blanket. C) Floating blinker lantern. D) Yves St. Laurent flight bag.
- E) Your choice of sterling silver chains—7" - 24".

With a \$5,000 deposit: F) Corning Ware® Petite Pan Set with covers. G) Mellon vinyl tote. H) Rogers Cutlery Set. I) 7-pc. Crystal Ice salad set. J) Pearl necklace. K) Weed-eater® trimmer. L) Toshiba LC Calculator. M) 24k. gold necklaces—7", free. Or purchase other sizes at substantial savings.

**Be sure to register for our Grand Prize Giveaway! A 19" GE color TV set will be given away at each National Savings Bank office...PLUS a grand prize, all-**

**expense paid trip for two to Bermuda. No deposit required to enter.**

### Free Gifts:

Only one gift per individual or joint account. Initial deposit must remain on deposit for at least 12 months, except 6-Month Certificates, which must remain on deposit for 26 weeks. If demand exceeds supply, depositors may choose from remaining gifts in category. Offer ends August 2, 1980.

### Grand Prizes:

Winners chosen by random drawing of official entry blanks, available at all National Savings Bank offices. Entrants must be 18 years of age or older; no deposit required. Employees of National Savings Bank, its advertising agencies and their immediate families are not eligible for prizes.



# NATIONAL SAVINGS BANK

MEMBER FDIC

THE FOUR CORNERS. DELMAR • DOWNTOWN ALBANY • WESTGATE  
• TROY • SARATOGA • PLATTSBURGH

Select One of These Items With Your Deposit	With your First Deposit to a New or Existing Savings Account, Choose One of these Gifts FREE or Purchase at the Prices Listed Below.			With Each Additional Deposit of \$100 or More Pay Only
	Deposit \$200 Or More	Deposit \$1,000 Or More	Deposit \$5,000 Or More	
Blanket	FREE	FREE	2 FREE	\$ 6.00
Flight Bag	FREE	FREE	2 FREE	6.00
Corning Cvr'd. Skillet	FREE	FREE	2 FREE	6.00
Lantern & Battery	FREE	FREE	2 FREE	6.00

Select One of These Items With Your Deposit	With your First Deposit to a New or Existing Savings Account, Choose One of these Gifts FREE or Purchase at the Prices Listed Below.			With Each Additional Deposit of \$100 or More Pay Only
	Deposit \$200 Or More	Deposit \$1,000 Or More	Deposit \$5,000 Or More	
Silver Chains: 7"	FREE	FREE	2 FREE	5.00
15"	FREE	FREE	2 FREE	6.00
18"	FREE	FREE	2 FREE	7.00
24"	FREE	FREE	2 FREE	8.00



Select One of These Items With Your Deposit		With your First Deposit to a New or Existing Savings Account, Choose One of these Gifts FREE or Purchase at the Prices Listed Below.			With Each Additional Deposit of \$100 or More Pay Only
Gift	Deposit \$200 Or More.	Deposit \$1,000 Or More	Deposit \$5,000 Or More		
Calculator	\$ 7.00	\$ 5.00	FREE		11.00
Salad Set	7.00	5.00	FREE		11.00
Carving Set	7.00	5.00	FREE		11.00
6 Piece Corning Set	7.00	5.00	FREE		11.00
Jumbo Tote	7.00	5.00	FREE		11.00
22" Pearls	7.00	5.00	FREE		15.00
Weedeater	7.00	5.00	FREE		15.00

Select One of These Items With Your Deposit		With your First Deposit to a New or Existing Savings Account, Choose One of these Gifts FREE or Purchase at the Prices Listed Below.			With Each Additional Deposit of \$100 or More Pay Only
Gift	Deposit \$200 Or More	Deposit \$1000 Or More	Deposit \$5000 Or More		
Gold Chains: 7"	10.00	8.00	FREE		14.00
15"	19.50	17.50	\$12.50		26.00
18"	26.00	24.00	19.00		32.00
24"	35.00	33.00	28.00		42.00

# THEY'RE BACK

Remember those green roll-up shades on the porch? After a long search, we found them again. Block out the heat on your porch, patio or whatever. Built for years of use, they're half the price of other wood shades.

Call us for prices and sizes

## Delmar Decorators

**Delmar**

**439-4130**

P.S. Cut out this ad and Save 10% on your order.  
Buy 5 shades or more and Save 15%.

**TUESDAY, JULY 29**

Film, "Flash, the Teenage Otter" and "The Legend of the Boy and the Eagle," Bethlehem Library, 2 p.m.

Civil War in America, Session III, Bethlehem Library, 7-9 p.m. Pre-registration required.

Film, "Charly," Voorheesville Library, 7:30 p.m.

**WEDNESDAY, JULY 30**

Evening on the Green, Silver Strand Band, Bethlehem Library, 7:30 p.m.

Bethlehem Library, special program, "Salt is More Precious Than Gold," a Portable Poppet Playhouse production, 3 p.m.

**THURSDAY, JULY 31**

Exhibition Baseball, Schenectady R&R Pools vs. Delmar Blue Jays, BCHS Field, 6 p.m.

**FRIDAY, AUGUST 1**

Punkintown Fair, family fun next to the New Salem Fire Hall, Rt. 85A, 7 p.m.

Farmer's Market, St. Thomas parking lot, Delaware Ave., Delmar, 9 a.m.-1 p.m.

Glenmont Firemen's Fair, Glenmont Rd., 7 p.m.

**SATURDAY, AUGUST 2**

Punkintown Fair, family fun next to the New Salem Fire Hall, Rt. 85A, 6:30 p.m.

Glenmont Firemen's Fair, Glenmont Rd., 7 p.m.

**SUNDAY, AUGUST 3**

School House Museum. Clapper Rd. and Rt. 144, Cedar Hill, people's collections on exhibit, 2-5 p.m.

Found keys? Call Hilchie's.

"They can tell me all they want about how much natural gas there is right now. All I know is, that the country is using almost twice as much as we're discovering."

*William A. Vaughan, Director  
Energy Mgmt. Section, General Motors Corp.  
BUSINESS WEEK, 4/23/79*

**THE MORE YOU KNOW  
ABOUT GAS,  
THE MORE COMFORTABLE  
YOU'LL FEEL ABOUT  
OIL HEAT.**

THIS AD SPONSORED BY THE OIL HEAT INSTITUTE OF EASTERN NEW YORK, INC.

**Burt Anthony  
Associates  
FOR  
INSURANCE  
CALL**



**Burt Anthony**

Inflation has a big bearing on your homeowner policy — it could cause you to be grossly under-insured.

Call 439-9958  
for a review.



**208 Delaware Ave.  
Delmar**

**MONDAY, AUGUST 4**

Film, "Those Magnificent Men in Their Flying Machines," Bethlehem Library, 7 p.m.

Tri-Village Bloodmobile, St. Thomas School, Kenwood Ave., Delmar. Anyone 17-66 years old and weighing 110 pounds may give. Walk-ins welcome. 1-7 p.m. Appointments may be made by calling 439-5042.

Free Career and Educational Counseling, Bethlehem Library, by appointment, 1-4 p.m.

**Lost keys? Call Hilchie's.**

**TUESDAY, AUGUST 5**

Film, "Robin Hood," Bethlehem Library, 2 p.m.

Free Career and Educational Counseling, Bethlehem Library, by appointment, 6-8 p.m.

Film, "Saturday Night Fever" (PG version), Voorheesville Library, 7:30 p.m.

**WEDNESDAY, AUGUST 6**

Evening on the Green, Findlay Cockrell and Matthew Herskowitz, summer pops piano duet, Bethlehem Library, 7:30 p.m.

Bethlehem Library, special program, tales of Robin Hood, 3 p.m.

Assemblyman Larry Lane's district office, 1 Becker Terr., Delmar, open 10-3.

If your Spotlight doesn't come Thursday, call 439-4949.

**Special On WMMT CHANNEL 17**

- Love Canal Tragedy  
Thursday 8 p.m.
- Marijuana Update  
Saturday 5 p.m.
- Movie: 'Anchors Aweigh'  
Saturday 9 p.m.
- Soccer: Spain vs. Belgium  
Sunday 7 p.m.
- Documentary: Killer Whale  
Monday 8 p.m.
- Olympia: Part 2  
Wednesday 9 p.m.

**Owens-Corning Fiberglas supports  
public television for a better community.**

**Owens-Corning is Fiberglas**

OWENS CORNING  
**FIBERGLAS**

# area arts

*A capsule listing of cultural events easily accessible to Bethlehem-New Scotland residents, provided as a community service by the General Electric Co. plastics plant, Selkirk. Phone numbers are for information and tickets.*

## THEATER

"Anything Goes" (tap-dancing musical), Mac-Haydn Theatre, Rt. 203, Chatham, **July 23-Aug. 4** (Wed.—Fri. 8 p.m., Sat. 5 and 8:30, Sun. 2 and 7 p.m.) Box office 1—392-9292.

"The Hollow" (Agatha Christie), Woodstock Playhouse, **July 23-27, July 30-Aug. 3**, 8:30 p.m. (Sun. 7 p.m., Thurs. mat. 2:30). Tickets at Albany Community Box Office, 458-7530.

"Nanbozho" (American Indian Myth), Mettawee River Theatre Company, outdoor plaza, Empire State Plaza, **July 27**, 6-8 p.m.

"The Year Boston Won the Pennant" (John Ford Noonan) Studio Theater, State University PAC, **Aug. 4**, 8 p.m. \$3.50. 457-3907.

## BALLET

Buffalo Inner City Ballet Company, outdoor plaza, Empire State Plaza, **July 30**, 7:30-9:30. Free admission, free parking.

## FILM

"Dr. Zhivago" (Omar Sharif, Julie Christie), with captioned and spoken dialogue, Albany Public Library, 161 Washington Ave., **July 30**, 2 p.m. Free.

"Two for the Road" (Audrey Hepburn, Albert Finney), Albany Public Library, **July 29**, 2 p.m. Free.

## ART

Nineteenth and 20th Century Motors, Terrace Gallery, New York State Museum, **through Sept. 1.**

Posters Plus Galleries, varied exhibits of prints, lithos, etchings, silk screens, photos, drawings by local and international artists, 295 Hamilton St., Robinson Square, Albany. Mon.—Sat. 10:30-5:30.

**GENERAL ELECTRIC**

SELKIRK, NEW YORK 12158

An Equal Opportunity Employer

# **NOW you can get it all together at West End Federal.**

---

**A N.O.W. account at West End Federal  
works like checking,  
pays 5% interest like savings  
and gives you  
a single monthly statement.**

Your N.O.W. account at West End combines all the convenience of a checking account with the high interest earning power of a savings account. You receive a simple understandable statement along with your cancelled checks each month. You

must keep \$300 in your checking account in order to earn interest. Should the balance fall below \$300 in any month, there will be a service charge of \$2.00 for that month and a forfeiture of interest.

**WEST END  
FEDERAL** SAVINGS & LOAN  
ASSOCIATION

Main Office: 854 Madison Avenue, Albany  
DeMar Office: 214 Delaware Avenue  
Branch Office: Clifton Country Mall  
Satellite Office: Denby's Stuyvesant Plaza

Member FSLIC





# The Spotlight

Graphic newsweekly serving the towns of Bethlehem and New Scotland, Albany County, N.Y. • (518) 439-4949

## POLITICS

### Local Democrats find new clout

Bethlehem's Democratic leadership discovered this week it had enough influence to cause an Assembly candidate to drop out of the September primary race.

H. Lee Davis of Catskill, who started campaigning more than six weeks ago for the Democratic nomination for the 102nd Assembly district, said last week he was withdrawing. In a statement distributed to the press, he said that "the recent decision by the town of Bethlehem Democratic committee to circulate John Mattoon's designating petitions and not mine makes it very clear that I do not have the support or even the neutrality of the Albany County leadership."

Earlier, Davis had circulated a Polaroid snapshot showing him shaking hands with a smiling Mayor Erastus Corning II at the annual Albany County Democratic picnic at the Altamont fairgrounds. Corning, who heads the powerful county organization, has not issued any candidate endorsement in this or other contest.

The 102nd district seat is held by C.E. (Larry) Lane of Windham, who this year was named assistant minority leader in the Assembly. The district embraces Greene County and parts of Columbia and Albany counties, including the towns of Bethlehem and New Scotland.

"In order to wage the right kind of fight that would be



Lee Davis, right, with Mayor Corning at Altamont.

necessary to win the primary," Davis said in his statement, "it would mean that Mrs. Davis and I would have to accept an additional burden on an already tremendous workload. Pauline has not fully regained her strength from a recent bout with hepatitis, and as my campaign manager, has found the stress of campaigning very exhausting."

Michael Breslin of Delmar, Albany attorney serving his first year as Bethlehem's Democratic chairman, said both Davis and John Mattoon of Chatham met with the town committee June 23 seeking support. The committee, he said, "was very much impressed" by Mattoon, a supervisor for the State Dept. of Correctional Services.

Breslin's version of the committee session: "After a lengthy meeting and extensive discussion with both candidates, the committee decided that the candidates should be selected by the people in a primary election, and chose not to endorse either candidate. The committee did, however, agree to circulate the petitions of John Mattoon for the primary election. The Albany County Democratic committee has remained neutral."

Mattoon, 34, holds two Bronze Star medals for bravery as a U.S. Army platoon leader in Vietnam. He is a graduate of St. Anselm's College and has a master's degree in public administration from New York University. He and his wife, the former Donna Bowler, have two small children.

## GLENMONT

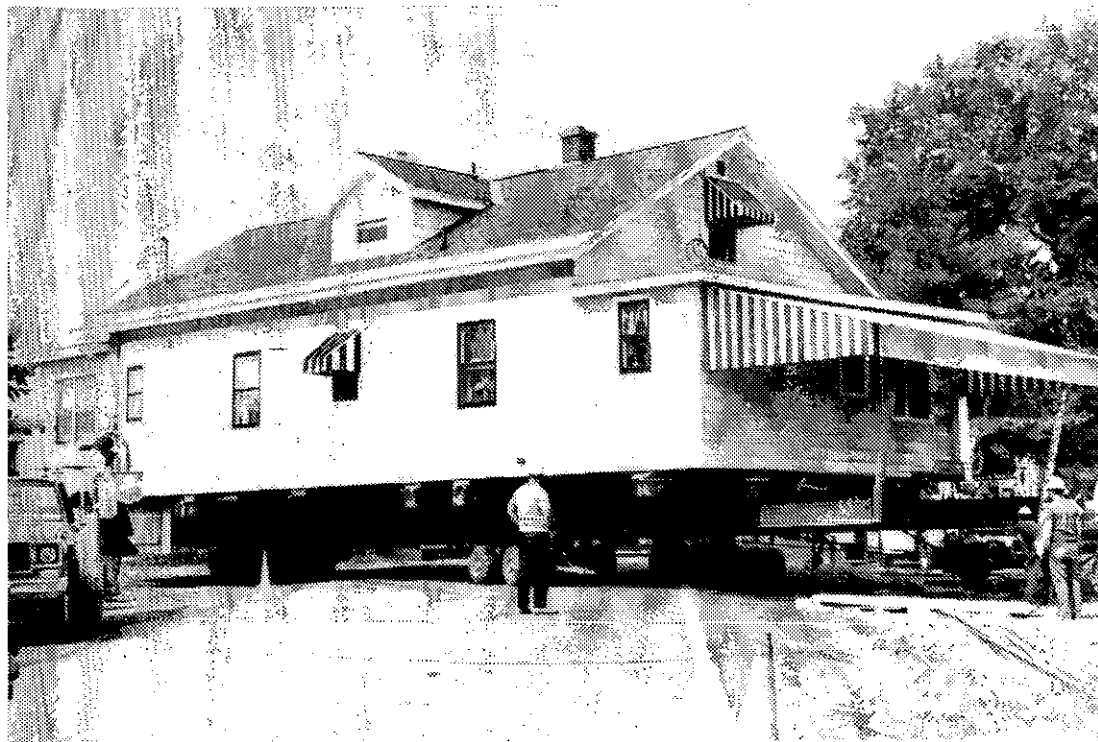
### Decision pending on river plant

Sears Oil Co. and residents of the Van Wies Point section of Glenmont will have to wait several more weeks for a decision by Bethlehem's board of appeals on a controversial \$20-million oil topping plant.

Board members this week received a 40-page transcript of the July 2 public hearing that brought out virtually the entire population of Van Wies Point. The hearing on Sears' petitions for a special use permit and four variances packed the second-floor hearing room at the town hall. The hearing, lasting nearly four hours, brought strong objections from nearby residents.

The company, which has owned a tract on Bethlehem's riverfront for 30 years, purchased an additional 37 acres to be used as a buffer zone between the proposed processing plant and the residential zone at Van Wies Point to the south. The property lies within the Bethlehem Central school district.

The company proposes to produce approximately 15,000 barrels of home heating fuels per day, but not gasoline. It needs variances for four towers that would exceed the town's 60-foot maximum zoning restrictions on height. Two vent towers would be approximately 80 feet tall, one would be approximately 100 feet, and a flare stack to burn off excess emissions would be 152 feet. All four stacks are required by federal and state environmental regulations.



Niagara Mohawk, New York Telephone and Bethlehem Video had two trucks apiece at the scene Monday when Howard Loucks's house was moved from one side of Delaware Tpk. to the other. The crews spent more than an hour "dropping" power, phone and cable TV lines to ground level for the move. Loucks bought two acres across the road after living for 20 years next door to both his own body and fender shop and a popular tavern. Loucks, his wife and two teenage children did not disturb furniture or even lamps, dishes or wall pictures preparing for the move. *Spotlight*

#### SELKIRK

### Neighbors fight new gas pumps

A contingent of Beckers Corners residents have voiced objections to a proposal to add gasoline pumps to the Convenient Food Mart at Rts. 398 and 9W, Selkirk.

They appeared at a public hearing on the proposal before the Bethlehem board of appeals at town hall Wednesday. Their major objection: increased traffic attracted by the pumps.

During the hearing it was brought out that the two Gasland service stations in the town—at the 9W-396 intersection opposite the Convenient and on Rt. 85 in Slingerlands—are expected to reopen soon.

The five-member board deferred action.

#### FIRE CALLS

July 21 - Selkirk No. 2 - Rt. 144, Glenmont, house fire, slight damage.

## GLENMONT FIREMEN'S FAIR

24th  
ANNUAL

**COME TO THE FAIR**

TWO  
WEEKENDS

**FIREHOUSE, GLENMONT ROAD, GLENMONT**

**JULY 25th & 26th • AUG. 1st & 2nd**

**COOK SHED—CLAM BAR, HOT DOGS, HAMBURGERS, PIZZA,  
ITALIAN SAUSAGE SANDWICHES—"MOON WALK"**

**GAMES — PRIZES — GAMES**

**PLENTY OF FREE PARKING  
AT TOWN SQUIRE PARKING AREA**

**STARTS AT 7:00  
EACH NIGHT**

**FIREMEN'S  
FLEA MARKET**

**SAT., JULY 26th  
9 A.M. TO DUSK**



## FEURA BUSH

### Church launches building drive

Members of the Jerusalem Reformed Church, Feura Bush, are planning a series of fund-raising events to finance extensive repairs to the church building currently under way by a contracting firm.

A spokesman for the church said a new furnace has been installed and the chimney needs to be rebuilt.

The drive will kick off with a flea market Saturday, July 26, which will include a refreshment booth and bake sale from 10 a.m. to 5 p.m. Space is available at \$7.50, with dealers welcome and vendors supplying their own tables. Rain date is Aug. 2.

The church will sponsor a buffet supper Aug. 9 with servings starting at 4:30. Mrs. Dorothy Smith, 439-5662, is handling reservations. The event will mark church members' first attempt at a buffet, but the meats, salads, cheeses and other foods promise to be on a par with the church's traditional suppers in spring and fall.

*In Slingerlands*, the Spotlight is sold at Convenient Food Mart, the Toll Gate and New Scotland Pharmacy.



Two "cherry pickers" were working both sides of the road Monday during the house move. On the left, a Niagara Mohawk movable basket, on the right, a crew from New York Telephone.

### Vandals sought

Bethlehem police are looking for two youths in a car who tore up a section of a split rail fence on Greenock Rd. at 9 p.m. Saturday, used one of the rails to smash a light pole, and threw the rest against the house.

**SHAKLEE**  
NATURAL PRODUCTS  
439-4857

### TUTORING YOU CAN TRUST

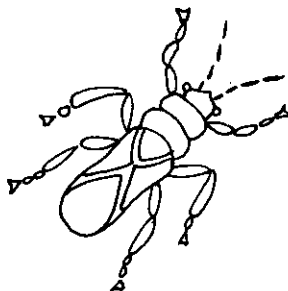
Summer Schedule  
Now Available

- Reading
- Math
- Study Skills
- Sat. Prep
- Speed Reading
- All Ages

### THE LEARNING CENTER

• 12 Colvin Ave., Albany  
459-8500

### Garden Shoppe



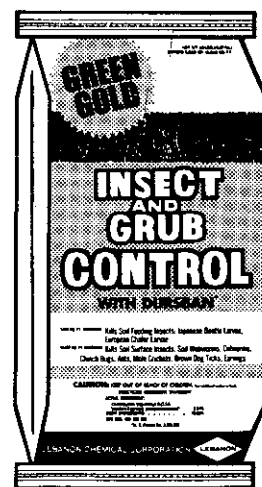
### STOP CHINCH BUG DAMAGE NOW!

only **\$18.95**

- Covers 10,000 sq.ft.
- Easy to spread
- Also control ANTS

Does your lawn look brown & dry...?

**IT'S PROBABLY CHINCH BUGS**



Daily 9-6 • Saturday 9-5 • Sunday 10-4

3 Locations

• Glenmont • Guilderland • Rexford



Community Service by  
**KEYSTONE BUILDERS, INC.**

— FOR ALL YOUR CARPENTRY NEEDS —

CALL US FIRST  
STEPHEN M. BOLDUC 439-6828

**DEITCHERS WALLPAPER  
FACTORY SALE**

188 REMSEN ST., COHOES 237-9260

touraine  
house  
paint

SAVE  
\$5.15  
PER GAL.

Redwood  
Stain  
\$8.99  
GAL.

**DELMAR  
Local historical  
book published**

*On the cover: Cornelius V. Baker House (circa 1870) on the river at Cedar Hill, shown in Allison Bennett's new book.*

One of the Bethlehem-New Scotland area's best known writers has published a book that is being acclaimed as the first major Albany County historical work since 1890.

Allison P. Bennett of Delmar, former Bethlehem town historian and author of many historical articles, spent two years researching and writing "The People's Choice: A History of Albany County in Art and Architecture." The soft-cover edition, which made its first appearance last week, has 136 pages with 164 photos and five maps. The

first press run was 750 copies, with 250 hardcover copies due off the presses later in the year.

Mrs. Bennett, a lifelong resident of Bethlehem whose forebears lived in the Guilderland-Altamont area for several generations, has four Dutch ancestors who lived in Albany before 1664. The family of her husband, William D. Bennett, president of Security Supply Corp., Selkirk, have lived for several generations in Bethlehem and New Scotland. The Bennetts have three married children.

The book was sponsored by the Albany County Historical Assn. with a grant from Albany County for printing.

"I felt the subject was something of general interest to Albany County, and something that was very much needed," Mrs. Bennett observed last week. "I spent hours covering the back roads of Albany County, knocking on strange doors to inquire about their fireplaces, any wall stenciling, etc. Often no one knew who I was or where I was going, but nothing untoward happened. People were very kind and seemed to be interested in my project."

In some rural areas, like

FURTHER  
REDUCTIONS ON  
SUMMER SALE  
MERCHANDISE!

1/2 OFF

TOWN AND TWEED

OPEN 10 AM TO 9 PM  
SAT. 10 TO 5:30  
DELAWARE PLAZA • DELMAR

**JULY  
CLEARANCE  
SALE!**

**15% to 60%**  
off selected  
merchandise

Very Special —  
15% Discount on  
Norman Rockwell

**THE CRYSTAL  
CHANDELIER**

278 Delaware Ave.  
Delmar  
439-4643



**Allison Bennett**

Preston Hollow where there are no restaurants, Mrs. Bennett would take a thermos of coffee and a sandwich and have lunch along the road, sometimes with Delmar photographer J. Wallace (Wally) Campbell and his wife.

The book, she said, was "always with you, always in your mind." For two years she gave up other things she liked to do, like certain entertaining, club groups and civic activities to spend time on research, picture-taking and the actual writing.

Asked how she arrived at a title, she smiled and said: "Oh, I agonized over that for more than a year. I finally realized that the heart of the book was art and architecture, the kind of art work and architecture

the people themselves chose in those early times. It showed what they wanted."

The soft-cover version is on sale at a number of Albany bookstores and in Delmar at the Paper Mill and the Spotlight office.

#### **Wins scholarship**

Sharon Lee Gerber, wife of Rev. David Gerber, formerly of Delmar, has been awarded a \$4,000 scholarship at the University of North Carolina, where she will work on a doctor's degree starting in September. Sharon, daughter of James H. Carnahan of Glenmont, and David, son of Mr. and Mrs. Joseph Gerber, both graduated from Bethlehem Central High School. Sharon taught at Princeton University last semester and her husband graduated from the New Brunswick, N.J., Seminary in June. Both did their undergraduate work at Hope College, Holland, Mich.

**WOULDN'T YOU  
RATHER BE  
A MILDRED ELLEY  
GRADUATE THAN  
COMPETE  
AGAINST ONE?**

*Enroll Now for  
Classes Starting  
August 25.*

**Call 472-9227**

#### **OUR SUMMER DRAPERY SALE**

is now in progress! Call us for a showing of the finest in decorative fabrics from Reliable Mills, Waverly, Bloomcraft and other fine mills.

We measure and install. Kirsch and Graber hardware used exclusively. We also have wood shades, blinds and verticals at similar savings.

For FREE Shop-At-Home-Service,  
Call us and SAVE 20%.

**Delmar Decorators**

Delmar, N.Y.

439-4130

#### **Named LWV officers**

Several Delmar residents were recently elected officers of the Albany County League of Women Voters for the 1980-82 term. They include: Carol Bullivant, president; Jan Whitaker, secretary; Doris Davis, publicity director, and Suzanne Secor, Caroline Terenzini and Sally Webb, directors.

Patti Thorpe will lead the Bethlehem unit of the League and Barbara Bartoletti will serve as membership chairman. Anyone interested in League activities may call 439-4661.

#### **DAVES GLASS COMPANY**



We now do Auto glass.  
Stop in for your free estimate.  
American & foreign cars  
and trucks.

- storms & screens repaired
- mirrors
- table tops
- residential & commercial

154B Delaware Ave.  
Delmar (behind Denby's)

**439-7142**



**January in July  
SALE**

**\$309<sup>95</sup>**

Reg. \$369.95

*with Electric Starter*

**OTHER  
SNOW-BLOWERS**

**\$SAVE**

**\$600 to \$2000**

**ON PRE-SEASON  
SALE!**

**THE NEW, COMPACT  
Simplicity  
AN ALLIS-CHALMERS COMPANY  
SNOWBUSTER**

- Patented squeegee-action paddle design helps propel the unit thru the snow
- Patented top discharge rigid vane design lets you bust thru foot high drifts

**Save \$60 on the best 2.25 HP snowthrower you can buy!**



**HILCHIE'S**

**SERVITAR Hardware**

**235 DELAWARE AVE.  
DELMAR, N.Y. 12054**

## DIG YOURSELF OUT



### RENT-A-BOBCAT

When that special job has you in a hole—take the easy way out—RENT-A-BOBCAT. We have just the right attachment to handle your job.

- DEMOLITION HAMMER
- BACKHOE
- BUCKETS
- BOX SCRAPER
- YORK RAKE
- PALLET FORK
- TREE TRANSPLANTER

Rent by the hour, day, week or month.



**Abele Tractor and Equipment Co., Inc.**

Sales • Service • Rentals  
72 Everett Rd.  
Albany, N.Y. 12205  
**438-4444**

## BETHLEHEM

### Fuel tax repeal support sought

Years of county Republican efforts to give county residents relief from the burden of the 3-percent county sales tax on home heating fuel appear to be nearing success, according to Mrs. Sue Ann Ritchko, representative from Bethlehem's 34th District.

"Although the Democrat-controlled efforts to remove the county tax on home heating fuel for months, our persistent efforts to get action appear to have made an impression on the majority party," Mrs. Ritchko said. "Majority leader Richard Myers has promised that the resolution on the fuel tax can be brought to the floor next month. That means the matter will come before the County Legislature the night of Monday, Aug. 11. I urge all Bethlehem residents, particularly senior citizens who

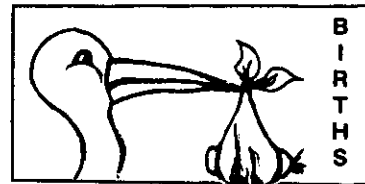
are most burdened by this tax, to attend the meeting at 7:30 p.m. at the County Court House. A demonstration of interest in this pocketbook measure will go far toward persuading the Legislators of the majority party to act favorably on the resolution."

The state has acted to remove the state sales tax on home heating fuel on a graduated basis. The state tax is now 5.5 percent instead of 7 and will be removed entirely in two years.

"A delegation from the Bethlehem Women's Republican Club attended the July meeting of the county Legislature," Mrs. Ritchko said. "A spokesman expressed shocked dismay at the manner in which the overwhelming Democrat majority railroaded vital legislation affecting all our pocketbooks without any opportunity for careful consideration."

Among the Republican women attending were Mrs. Mary Bardwell, vice chair-

man of the county Republican committee; Mrs. Dorothy B. Brown, president of the club; Mrs. Jeanne Vogel, past president, Mrs. Jean K. Gardner, Mrs. Marjory O'Brien and Mrs. Helen E. Denny, all district chairmen, and Mrs. Mary Spargo.



### Correction

The parents of a boy, Taran Micah, born July 9 in Bethlehem, Wash., are Mr. and Mrs. Richard Graham-Cooke. The parents' names were incorrectly reported in last week's Spotlights as Mr. and Mrs. Richard Cooke.

### St. Peter's Hospital

Girl, Jennifer, to Mr. and Mrs. John Capuano, Voorheesville, July 7.

Girl, Lauren, to Robin Ikler, Voorheesville, July 8.

Girl, Barbara, to Mr. and Mrs. Raymond Lancaster, Glenmont, July 9.

Girl, Maureen, to Mr. and Mrs. Russell Gardner, Voorheesville, July 9.

Girl, Katie, to Mr. and Mrs. Stewart Seaburg, Feura Bush, July 9.

Girl, Julie, to Mr. and Mrs. Thomas Mazzaferro, Delmar, July 9.

## BETHLEHEM SENIOR CITIZENS

FOR  
All GENERAL REPAIR and  
MAINTENANCE SERVICES  
at REDUCED RATES for people on  
FIXED INCOMES  
Call

SENIOR CITIZEN SERVICES  
**439-2979**

# DiNAPOLI & DiNAPOLI OPTICIANS



## FASHION EYEWEAR and CONTACT LENSES

1 Delaware Plaza  
DELMAR

Mon.-Fri. 9 a.m.-5:30 p.m.

Tues. eve. 7-8:30 p.m.

Closed Saturdays

**439-6309 439-9191**

Douglas Marone, Manager

Don't Forget—We're Open

**TUESDAY NIGHTS 7-8:30 P.M.**

Stuyvesant Plaza  
ALBANY

Mon.-Fri. 10 a.m.-9 p.m.

Open Every Saturday

10-6 p.m.

**489-8476**

457 Madison Ave.  
ALBANY

Mon.-Fri. 9 a.m.-5:30 p.m.

Closed Saturdays

**449-3200**

## Draft signup starts slowly

After some weekend confusion over the constitutionality of an all-male draft, registration began Monday for all men born in 1960. The Delmar post office received the largest number, 20, with Voorheesville following at 16. Slingerlands post office recorded 7, Selkirk 4, and Clarksville one.

A spokesman for the Glenmont post office did not give an exact number, but observed "so far they're coming in and there have been no problems."

## Lamaze classes forming

Classes in the Lamaze method of prepared child-birth will begin in Albany starting the weeks of Aug. 4 and Aug. 18.

For information and registration contact Melody Brennan, 439-6353.

## Choristers elect

Two Bethlehem men have been elected to office in the Mendelssohn Club. John L. Dorman, 5 Brockley Dr., Delmar, is the new treasurer and J. Richard W. Hartnett, 26 East Bayberry Dr., Glenmont, will serve as secretary of Albany's 70-voice male glee club.

## Renamed by PTA

At the final meeting of the school year, the Clarksville PTA elected officers for the 1980-81 session. Judy Fritz will serve a second term as president. Other officers include Julianne Van Praag, vice president; Natalie Butterworth, treasurer; Anne Choppy, secretary; Viola D'Anza, corresponding secretary; Vaila Joy, head grade mother; Dotty Hargrave, hospitality chairman; and Marie Hornick, publicity chairman.



John L. Dorman



Richard Hartnett

## Watch This Space Each Week For \$avings

### AIR CONDITIONER SPECIAL

**\$19.95 + tax**

We will evacuate and charge your VW or BMW's air conditioning system, and check its operation through July 30 for only \$19.95 + tax.

### SUPER DEAL

**BOSCH FOG LAMPS**  
NOW \$75<sup>00</sup>

REG. \$89<sup>95</sup>  
SAVE \$14<sup>95</sup>

### PERMANENT MOUNT VW RABBIT ROOF RACK

REG. \$74<sup>95</sup>

**NOW ONLY \$64<sup>95</sup>**

With this coupon, expires July 30, 1980

INSTALLATION AVAILABLE ON ABOVE ITEMS

*Capital Cities  
Imported Cars*

Home of the 100,000 mile  
VW & BMW

**463-3141**

Rt. 9W

Glenmont

## BEGIN at JCA

## DAY OR NIGHT



This fall, take the time to talk with us at the Junior College of Albany. Find out how easy and rewarding it is to begin your education with us.

You'll find that we match people with programs. Whether you are planning for direct entry into the professional/business world, or transfer to a four-year institution, we provide a wide variety of programs with you in mind.

And starting this fall, selected JCA associate degrees will also be available to you through the Evening Division of Russell Sage.

So phone us or stop by for more information, we'll be glad to answer your questions. And it's not too late to submit your application for many fall 1980 programs.

**Junior  
College  
of Albany**

A Division of Russell Sage College

140 New Scotland Avenue  
Albany, NY 12208 • (518) 445-1711



*Dorothy  
Lynn*

Continuing

**OUR  
GREAT  
SALE!**

**SAVE  
30% - 50%**

282 Delaware Ave.  
Delmar • 439-4101

Tues.-Sat. 9:00-5:00

DELMAR

## Police seize 2 'potted' plants

It was a case of serendipity: police investigating one incident coming across an unrelated violation.

It started when Bethlehem police were called to the Town Squire shopping center in Glenmont where six youths had been causing a disturbance by damaging shopping carts and trash cans at 1:20 a.m. Sunday. Police arrested two juveniles for criminal possession of stolen property and disorderly conduct, and booked Jeffrey Little, 19, of Delaware Tpk., Delmar on charges of unlawful possession of marijuana and endangering the morals of a child.

In the ensuing investigation, two more juveniles were arrested and a street sign taken from Westchester Dr. and Fernbank Rd. was recovered from the home of one of the youths.

When Officers Wayne La-

Chappelle and Joe Mastriano went to Little's house at 916 Delaware Tpk., at 6:30 a.m. and were admitted by Lonnie David Ashley, 27, they found Little asleep on the couch and pipes and other drug paraphernalia about the house.

They also saw two green marijuana leaves, freshly picked, according to police reports. Moments later they found the source: two cultivated marijuana plants, one a foot high, the other a foot and a half. Ashly was ticketed for an appearance in Bethlehem justice court on charges of unlicensed growing of marijuana and unlawful possession.

## BETHLEHEM SOCCER CLUB

Under 19 Girls lost twice to Clifton Park, each time by 4-0, tied Guilderland, 1-1.

Under 19 Boys beat Village, 5-1, won from Niskayuna by forfeit.

Under 16 defeated Troy United, 5-0, and Village, 8-1.

Under 14 'A' lost to Lake Hill 'A' 4-0 and Village, 3-2; under 14 'B' lost to Lake Hill 'B'.

Under 12 'A' lost to Rotterdam, 3-2, tied Guilderland, 3-3; Under 12 'B' lost to Azzuri, 5-0, and to Clifton Park 'B'.

Under 10 'A' defeated Rotterdam, 7-0, and Bethlehem Under 10 'B' 5-0.

## Voorheesville News Notes

Maryann Malark 765-4392

Paula E. Murphy, a 1976 graduate of Clayton A. Bouton High School, received the Stanley Craig Memorial Prize at Franklin and Marshall College's awards ceremonies. The prize is awarded to the student on the basis of qualities of personality and character esteemed by the faculty and administration. She is the daughter of Dr. and Mrs. Michael Murphy, Slingerlands.

Jeffrey Kaine, a 1979 graduate of Clayton A. Bouton High School, has been inducted into Phi Beta Kappa, national honor fraternity. Jeff, son of Mr. and Mrs. Edward Kaine of Voorheesville, attends Herkimer County Community College.

New Scotland Elks Auxiliary members this week completed final arrangements for their first event in the newly chartered lodge, a country-western dance Saturday night at Sunset Park, Orchard Hill Rd., New Scotland. Karen Magrum of Voorheesville is chairman, assisted by Sharon Boehlke of Unionville, acting president of the Auxiliary, and Barbara Smith and Jean Goodrow, both of Voorheesville.

## Home-baked PIES to take out

Raspberry, blueberry, apple, pecan, lemon meringue.  
Real whipped cream pies: strawberry, banana, coconut, chocolate, hawaiian & black forest.

FULL 10", DEEP PIES

**\$4.50 - 6.00**

order one day in advance

Open every day  
7am-9pm  
**Toots**  
RESTAURANT  
439-9111  
283 Delaware Ave., Delmar

# The Cut & Curl Beauty Salon Summertime Special

\$1

*The Cut & Curl  
Beauty Salon*

700 KENWOOD AVE., SLINGERLANDS, N.Y. 12159

**\$1.00 OFF COUPON  
on HAIRCUT**

For Appointment call 439-7108

Offer Expires August 31, 1980

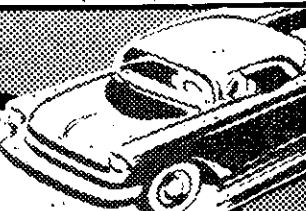
\$1

**ONE DOLLAR**

\$1

\$1

**We'll make your  
motor  
sing**



- Engine Tune-up
- Front End Alignment
- Automatic Transmission Service
- Modern Equipment
- Skilled Mechanics

**BAILEY'S GARAGE**

Oakwood Road, Elsmere  
Phone 439-1446



## NEW SCOTLAND Court upholds zoning board

A State Supreme Court has upheld the New Scotland board of appeals in refusing to permit a mobile home on an undersized lot.

Mrs. Julia Johnson, 131 Kenwood Ave., Delmar, had asked the board for a special use permit on a triangular piece of land she owns near the junction of Rts. 443 and 85 above Clarksville. She also requested variances for the width of the property as well as the total size of the lot, both of which did not meet the minimums specified in the town's zoning ordinance.

The appeals board declined to act on the variances on the basis that the dimensions of the lot area and the required minimum width to accommodate the mobile home were "too far in excess" of the zoning specifications to warrant consideration. The board, in effect, took no action.

Mrs. Johnson then took the board to court.

Earlier the town council had lost an appeal of a previous action involving a property owner seeking to establish a used-car lot adjacent to a residential area in Slingerlands. New Scotland officials served Alfred Cook, a Clarksville businessman, with a notice of violation of the zoning ordinance after he had started to develop property he owns on the south side of Rt. 85 west of Helderale without applying for a permit.

Cook's property is zoned B-1, which permits "light business" such as retail stores and offices. In the town's view, that list did not include a used-car lot. Cook disagreed, took the town to court, and won a favorable verdict. When the town appeal was denied, Cook last month opened his business on the site of the former Checkered Flag bar and grill on New Scotland Rd.

## KIDS...

*Are you a swimmer?  
Do you like to help other children?  
Do you like prizes?*

**Please Enter Our  
AQUATHON**  
**August 4, 5, 6**  
**at the Town Park**  
**10:00 A.M. to 12:00 Noon**

**Pick up your pledge sheets July 28 and 29  
at the Town Park and swim for donations  
to help children with Cystic Fibrosis.**

*There are children just like you who live with  
Cystic Fibrosis and who need your help.*

**For Further Information  
Call Nancy Fraser at 439-4221**



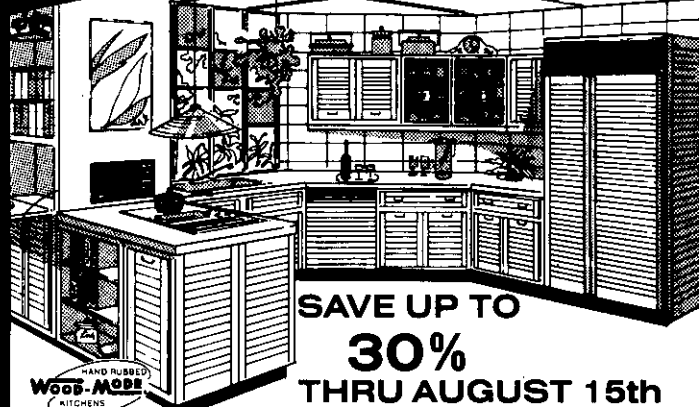
**Cystic Fibrosis Foundation**



*McDonald*  
Enterprises  
**Plumbing • Heating  
Carpentry**

**FREE ESTIMATES  
756-2738**

**16th Annual  
Wood-Mode Kitchens  
SUMMER SALE!**  
AUTHORIZED ONCE-A-YEAR SAVINGS EVENT



**SAVE UP TO  
30%  
THRU AUGUST 15th**

Pictured above is "ALPHA"—Wood-Mode's new European look, Contemporary Cabinetry

### SUPERIOR INVESTMENT

Act NOW...Save More Money During Our 16th ANNUAL AUTHORIZED SUMMER SALE! An investment in Wood-Mode, America's best selling custom cabinetry will appreciate in value and eventually become an outstanding tax shelter. When you sell your home and take the appreciation of your kitchen, you do not pay income tax on the profits, assuming they do not exceed \$100,000. This is one of the few ways for you to have inflation on your side, for a change.

### ABUNDANT LOW RATE FINANCING NOW AVAILABLE

Bank rates are down, abundant financing for home remodeling is now available. It's no secret, with home building temporarily slow, fine contractor craftsmen are available more than ever before and this means you'll save, save, save more money if you act now. If ever there was a time to invest in a custom designed and custom built Wood-Mode kitchen...THE TIME IS NOW!

### EXCLUSIVE GENUINE "HAND RUBBED" CABINETRY

GENUINE "hand rubbed" cabinetry is just one of the reasons why Wood-Mode is #1 in custom cabinetry. Wood-Mode, the af-

fordable status symbol for your kitchen, bathroom, family room, bedroom, den, or sewing room. Only Wood-Mode, in custom quality cabinetry, features tough durable PVC vinyl laminated interiors and shelf surfaces as well as solid oak drawers. In fact, Wood-Mode interiors are as tough as most kitchen counter tops.

### WIDEST SELECTION

Wood-Mode solid wood cabinetry is offered in 18 cabinet styles (including Alpha Contemporary cabinets) plus 4 woods (oak, maple, cherry or pine) and 60 natural or enamel finishes. The final finish is painstakingly "hand rubbed" by master craftsmen in a process that includes oil rubbing, steel wool polishing and sheepskin buffing. Run your hand across a Wood-Mode cabinet, you'll note the difference from all other brands immediately.

### PROFESSIONAL DESIGN STAFF

Our professional designers will prepare color perspective drawings and blueprints, as well as tasteful color schemes of your kitchen. These professionals are adept at incorporating brick, textures, space age appliances, and the latest design ideas into your kitchen.

VISIT OUR EXCITING SHOWROOMS & LET'S DISCUSS A WOOD-MODE DESIGN FOR YOU!

## DELMAR INTERIOR DESIGN

*Visit Our Showroom*

**Division of Delmar Construction Corporation**  
**288-C DELAWARE AVE., DELMAR**  
**439-5250**

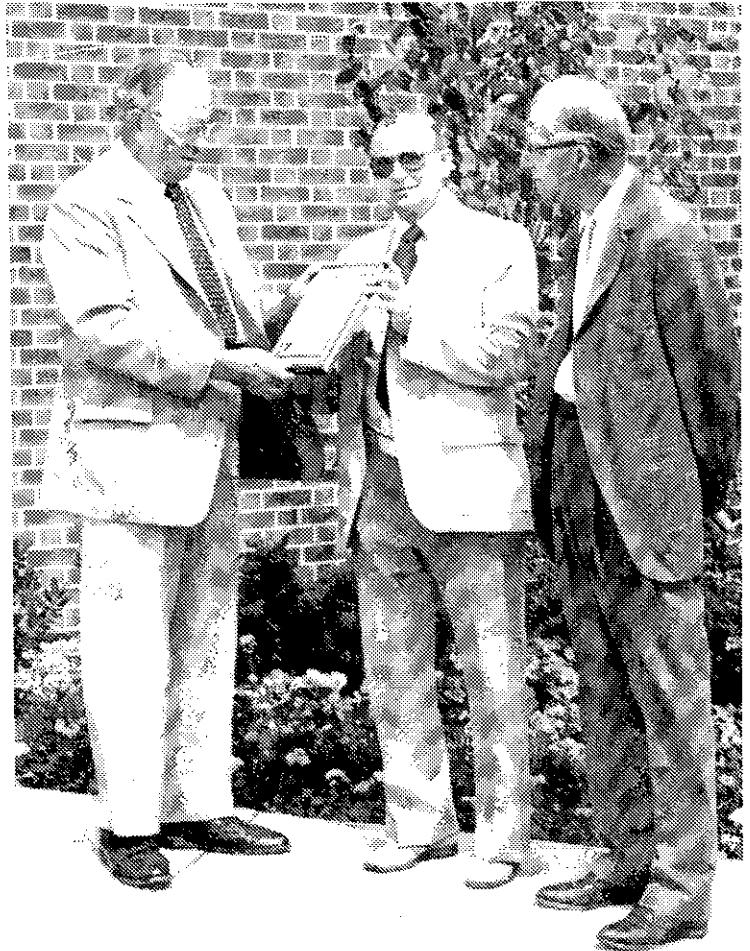
## Police have word for bike riders

Bethlehem police have directed two appeals to bicycle riders, both young and adult: ride with the traffic, not against it, and when riding to and from the town park, follow the established bike route wherever possible.

Police said complaints of unsafe bike riding are being received at an increasing rate. The most flagrant violators are those who ride facing traffic and who ride after dark without lights.

State law requires each person operating a bicycle along a highway to ride as near to the right side of the roadway as possible or upon a usable shoulder. Bicycles should also be equipped with a white light on the front and a red light on the rear.

Police also called attention to the marked bicycle routes through the center of Delmar set up to provide safe passage to the town park. Bike routes are marked along Hawthorne Ave., Darroch Rd., Mosher Rd., Roweland Ave., Murray Ave., Winne Rd., Woodmont Dr. and Axbridge Lane. By following local streets to one of these marked bike routes, riders will be taking the safest way to Elm Ave. Axbridge Lane meets Elm where there is a broad stretch of straight roadway.



Frank Cheeseman, vice president of City and County Savings Bank, accepts a plaque from Al Miller of the Men's Garden Club of Albany, citing the passive solar concept of the bank's new Bethlehem office. Looking on is Carroll Greenman of Delmar, chairman of the club's awards committee.

J.W. Campbell

### STEVE THE HANDY MAN

S. HOTALING  
439-9026



HOME REMODELING  
REPAIRS PAINTING MOBILE WORKSHOP  
Aluminum doors, windows, gutters

### — EARLY BIRD DINNER MENU — Junco's Award Winning

## Stone Ends Restaurant

Served 5:00 to 6:30 — Monday thru Saturday

### DISCOVER THE DELIGHTS OF ONE OF THE TRULY GREAT RESTAURANTS

Filet of Sole, Veronique  
\$5.95

Sauteed Chicken in Garlic & Wine  
\$5.50

Double Thick Pork Chop with Sauteed Apple  
\$5.95

Steak Kabob — Brochette of Filet Mignon  
\$7.25

Baked Stuffed Shrimp (Seafood stuffing, rice pilaf)  
\$8.50

Broiled or Fried Scallops  
\$8.95

Dinner begins with fresh vegetables served in a pot with dip.  
Corn fritter, potato, 2 vegetables, cheese and fruit.

Open Daily 5:00 to 11:00 P.M.  
Closed Sundays • 465-3178

Singing and Piano  
by Rene Martel  
8 to 1-A.M. Quarry Lounge

*Junco's*  
**Stone Ends**

One mile south of Thruway Exit 23  
Route 9W Glenmont, NY

### Call for nurses

Registered nurses, licensed practical nurses, student nurses, and technicians are needed to assist in taking blood pressures and pulse and interviewing donors on local Bloodmobiles and at the American Red Cross blood center on Hackett Blvd., Albany. Volunteers are asked to call 462-7461.

### Preschool on cable

The children of the Bethlehem Pre-school recently starred in their own half-hour television production. Under the guidance of Ben F. DeClue, access technical director for Channel 16, the staff and children were filmed in a typical school day. Channel 16 showed the program on July 21 and July 22.

## PIANO TECHNICIAN

Expert Tuning  
and Repairing

"The Tuner Alone Preserves The Tone"

**FRED WAGNER**

Registered Craftsman

Member Piano Technicians Guild

731-8690 Cossackie, NY



## SERVICEMEN In The NEWS

William D. Kavanaugh, son of Mr. and Mrs. Thomas J. Kavanaugh, Voorheesville, recently graduated from the U.S. Military Academy Preparatory School at Fort Monmouth, N.J., and received an appointment to the U.S. Military Academy at West Point.

Second Lieut. Leon A. Mable, son of Mr. and Mrs. Frederick W. Mable, 41 Douglas Rd., Delmar, has graduated from the Strategic Air Command's missile combat crew operational readiness training course at Vandenberg Air Force Base, Calif. He will now receive additional training and duty as a missile combat crew member at Francis E. Warren Air Force Base, Wyo.

Mark J. Fisher, son of John S. Fisher, 68 Elm Ave., Delmar, is undergoing summer training at sea. He is a member of the Naval ROTC unit at RPI, and has been assigned to the amphibious assault ship USS Guadalcanal, homeported in Norfolk, Va.

Pvt. Lane D. Carhart, son of Mrs. Beverly M. Carhart, Picard Rd., Voorheesville, recently participated in a tank gunnery qualification test at the Army training area in



Airman J.V. Lopez

Grafenwohr, Germany. He is a rifleman with the 3rd Infantry Division in Aschaffenburg, Germany. He entered the Army in June, 1979.

Second Lieut. William E. Warren, son of Mr. and Mrs. William E. Warren, 41 Montrose Dr., Delmar, recently participated in an Army training and evaluation program in Germany. The program was designed to evaluate individual and unit efficiency under simulated combat conditions. Lt. Warren, who entered the Army in May, 1978, is a battalion adjutant with the 37th Field Artillery in Germany. He received his commissioned through the ROTC program, along with a bachelor's degree in 1978 from the college of William and Mary, Williamsburg, Va.

Airman John V. Lopez, Jr., son of John V. Lopez of Selkirk, has been assigned to Chanute Air Force Base, Ill., after completing Air Force basic training at Lackland Air Force Base, Tex. He is a 1978 graduate of Ballston Spa High School.

Recruit Russell H. Wagner, son of Mr. and Mrs. Walter R. Wagner, Delmar, has completed the Navy's builders course at the Naval Construction Training Center, Gulfport, Miss. A 1980 graduate of Bethlehem Central High School, he joined the Navy last February.

PREPARATION  
FOR FALL '80

Our  
41st  
Year

# College Boards SAT

Summer Classes forming  
in July

Call Days, Evenings & Weekends  
or Visit Our Center

Albany Center  
163 Delaware Ave., Delmar  
(518) 439-8146

Stanley H.  
**KAPLAN**  
EDUCATIONAL CENTER



Centers in Major US Cities & Abroad

AT NAUTILUS TOTAL FITNESS CENTER WE BELIEVE IN

## TRUTH IN ADVERTISING

BUT — MANY OTHERS DO NOT! CAVEAT EMPTOR!

LET THE BUYER BEWARE OF:

1. **False and misleading claims**, such as: "THE ENTIRE SUMMER ABSOLUTELY FREE!" — When MORE than HALF the summer has already passed!
2. **BRAVADO headlines** (½ inch wide - 2 inches high) indicating opportunity for massive participation — followed by an eighth inch disclaimer limiting offer to first 30 new members!
3. **"TRAINED PROFESSIONALS"** who wildly claim that you can "lose between 5 and 15 lbs. in just 10 days!" — on their "Super Weight Loss Programs"! At best — a cruel hoax! No dietician or nutritionist worth his or her salt would recommend a **MINIMUM MAINTENANCE DIET** and a **MINIMUM EXERCISE PROGRAM** to lose just "5 lbs. in 10 days" that involved **Walking Briskly** for 6 hours; **jogging, cycling or swimming** for 3 hours; or a Nautilus workout of 2 hours — daily! "15 lbs. in 10 days" means burning off 5,225 calories per day! Can you possibly imagine **TRIPLING THE TIME PERIODS** in each of these exercise categories? Don't feel bad! **SUPERMAN** can't either! Drastic measures very often produce drastic results; and unless your chemistry is closely checked during drastic diets, it is quite possible for you to end up with serious damage to your vital organs.

**BY WAY OF COMPARISON** — at TFC OUR TRAINERS are NOT commissioned salesmen (whose turnover exceeds that of the customers) schooled primarily in high-pressure tactics; **OUR AIR CONDITIONING** is NOT always "being repaired"; and **NONE** of our programs, summer or otherwise, are **FREE**. "FREE" is a harpoon nicknamed "HYPE", and can impale you with a long term, semi-service contract. Fitness has a price tag! If it costs nothing — it is worth what you pay for it! ...



If it's full range, full-service, full supervision exercise you're looking for — including truth in advertising — come on down to TFC. Try our August **ONE-MONTH SPECIAL** only \$29!

154-B Delaware Ave.  
439-2778

## ANDRIANOS II RESTAURANT AND LOUNGE

### The Family Restaurant

Serving

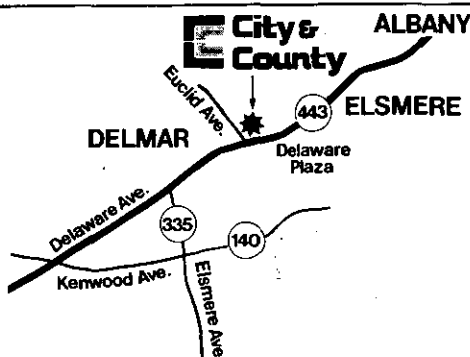
Sunday thru Thursday 11 a.m. to Midnight  
Friday thru Saturday 11 a.m. til 2 a.m.

439-7112

155 Delaware Ave.  
Next to Gloria Stevens

ENDS SATURDAY, JULY 26

# NEW BETHLEHEM OFFICE STA



# FREE

Choose one of these free certificate deposits

**IN APPRECIATION** of years of patronage by customers of our Bethlehem Office, City & County Savings Bank reaffirms its commitment to the community with a brand-new banking facility designed not only for energy efficiency but also for the most pleasurable banking.

**FREE GIFTS.** When you open a new savings account or add to your present City & County savings account, with a deposit of \$500 or more, you can choose a gift. The transaction must be made at our new Bethlehem Office during the Grand Opening celebration. Monies deposited in Regular Savings or Day of Deposit to Day of Withdrawal Accounts must remain on deposit for at least 12 months. One gift to an individual. An alternate gift choice within the same category will be offered should demand exceed supply. Gift offer ends Saturday, July 26, 1980.

**DEPOSITS INSURED UP TO \$100,000 BY THE FDIC**

**Drop in for a FREE meter stick.**

What's a meter stick? A yardstick that's gone metric — measures in both inches and centimeters. Very handy, and it's free.

## Complete Savings Bank Service

- Regular Savings
- Day of Deposit to Day of Withdrawal Savings
- Savings Certificates
- Free Checking
- NOW Accounts
- Safe Deposit Boxes
- Mortgage Loans
- Savings Bank Life Insurance
- Home Improvement/ Home Equipment Loans
- Student Loans & Pass Accounts
- IRA & Keogh Accounts
- Direct Deposit
- Christmas/Vacation Clubs

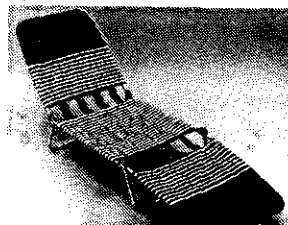
## CONVENIENT BANKING HOURS

Monday-Thursday 9:00 a.m.-3:00 p.m.  
 Friday 9:00 a.m.-3:00 p.m.,  
 Reopens 5:00 p.m.-8:00 p.m.  
 Saturday 9:00 a.m.-1:00 p.m.

**Drive-up Window (EXPANDED HOURS)**  
 Monday-Thursday 8:00 a.m.-5:30 p.m.  
 Friday 8:00 a.m.-8:00 p.m.  
 Saturday 9:00 a.m.-1:00 p.m.



**SEIKO COMPACT HAIR STYLER**  
 Lightweight dryer with thermal safety device and break-resistant LEXAN® body. Four heat settings.

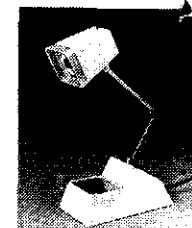


**CHAISE LOUNGE**  
 smart, comfortable recliner with attractive two-tone vinyl seat.

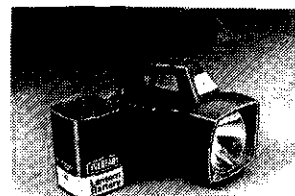
Choose one of these free certificate deposits



**WINDSOR AM POCKET RADIO**  
 with carrying strap and earphone. Solid state set with black case and polished metal face.



**WINDSOR HI-INTENSITY LAMP**  
 for home, school, office or work shop, with glare-free, concentrated light.



**EVEREADY COMMANDER LANTERN**  
 with battery. Features powerful long distance beam, handy slide switch, rugged construction

# Savings Bank

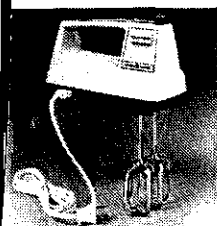
## SPANGLED GRAND OPENING

# GIFTS

Gifts if your savings or  
is \$5,000 or more



**CUSTOM ELECTRIC CAN OPENER**  
by General Electric. Attractive  
coffee/almond color with "Hands  
free" feature, and easy-clean  
removable cutter.

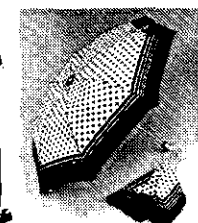


**GE CUSTOM PORTABLE MIXER**  
featuring 3 speeds, easy-grip  
handle, beater storage. Coffee/  
almond color.

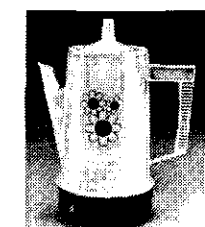
Gifts if your savings or  
is \$500 or more



**GE Frank-n-burger™**  
reversible grill for fast cooking  
of hamburgers, hot dogs, grilled  
cheese sandwiches, etc.



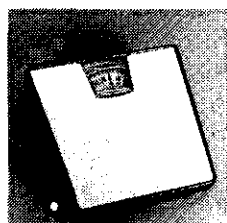
**UMBRELLA AND SCARF SET**  
Matching 100% nylon umbrella  
and 100% polyester scarf. Assorted  
colors and designs.



**REGAL POLY-PERK® COFFEE  
MAKER**

brews 4 to 8 cups of flavorful  
coffee, holds coffee at serving  
temperature.

Coffee-almond/brown color.



**HANSON BATHROOM SCALE**  
with large, easy-to-read dial. No-  
slip, non-mar base pads. 300 lb.  
capacity. Attractive white,  
trimmed in gold.

### A FREE GIFT FOR YOUR SAVINGS CERTIFICATE DEPOSIT

2½-Year Savings Certificates  
with "big investor" interest for small savers.

**10.11%** effective annual yield on **9.50%** interest per annum

MINIMUM DEPOSIT ONLY \$500...  
RATE EFFECTIVE THURSDAY, JULY 24-WEDNESDAY AUG. 6, 1980

The effective rate at the time you buy your certificate is guaranteed for the full 30-month term. At City & County Savings Bank, your interest will be compounded daily and credited monthly. To realize the yield shown, principal and interest must remain on deposit for a full year. Substantial interest penalty is required for early withdrawal. This offer may be withdrawn without notice.

### Six-Month (26-week) Savings Certificates at the latest money market rate

**8.705%** effective annual yield on **8.406%** interest per annum

MINIMUM DEPOSIT \$10,000. THIS RATE EFFECTIVE  
THURSDAY JULY 24-WEDNESDAY, JULY 30, 1980

The rate in effect when you buy your certificate is the rate you will receive for the entire six-month term of your investment. Your interest is credited monthly. To realize the yield shown, principal and interest must remain on deposit for a full year. Your certificate would have to be renewed at maturity at the interest rate shown to earn this yield. That rate may be higher or lower at time of renewal. Under federal regulations, compounding of interest during the term of this deposit is not permitted; and substantial interest penalty is required for early withdrawal. This offer may be withdrawn without notice.

Disclosure statements under the Truth-in-Savings Law are available at all offices of this bank

**We're here on your account.**

# City & County Savings Bank

167 Delaware Ave., Delmar, N.Y.

™Trademark of General Electric Company

®Registered trademark of General Electric Company

®Registered trademark of Regal Ware Inc

Member FDIC



Most Tri-Village Homeowners Prefer —



**THE COMPLETE  
FUEL SERVICE**  
FUEL OIL • KEROSENE  
GASOLINE

INSTALLATION OF HEATING AND  
AIR CONDITIONING SYSTEMS

**MAIN-CARE HEATING SERVICE**

*The Company to have in your home ... all year round.*  
318 Delaware Ave., Delmar • 24-Hour Service • 439-7605

## George W. Frueh Sons

Fuel Oil • Kerosene  
*Service Anyday — Anytime*

**Mobil®**  
436-1050

New at the

## Four Corners Lunchette

Ice cream cones, Sundaes,  
and other fountain treats.

This coupon good for

**1/2 Off** any one of our  
new ice cream treats.

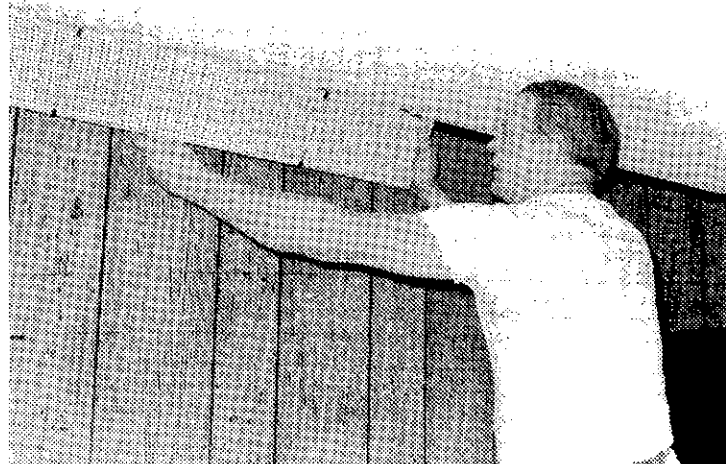
(Expires August 15, 1980)

**Four Corners  
Lunchette**

**371 Delaware Ave., Delmar**

New also — **Homemade**  
**Donuts** — fresh daily **439-9826**

Now open until 9 p.m. everyday



A new concept in residential heating has been installed in Slingerlands by electrician Hank Voorhees, above. The Radiant Glass system, called Heat, is based on specially constructed pebbled glass panels heated by an electric alloy circuit. It was hooked up last week in the home of Mr. and Mrs. Philip Gibbons, 83 Union Ave. South, only the second of its kind in Bethlehem. The panels are designed for ceiling, wall, baseboard or cove installation.

### Punkintown is here!

The New Salem Volunteer Fire Dept. will present its 38th Punkintown fair on two consecutive weekends, July 25

-26 and Aug. 1-2. Billed as a "family fun affair," the attractions include rides, games, treats and food. Saturday nights will feature a \$1.99 beauty contest for the 18-80 set. The fair begins at 7 p.m. on Friday nights and at 6:30 on Saturdays.

### BICYCLE THEFTS

July 15 - Mason Rd., Elsmere, back yard, two bikes, not registered; Kenwood Ave., front porch, not registered.

July 14 - Union Ave., Slingerlands, garage, registered.

**SPECIAL**  
Now thru August  
**HAIRCUT and  
SHAMPOO**  
**\$2.00 Off**  
**Mug and Brush**  
Barber Shop  
Four Corners, Delmar

## New Vibrations Hair Studio

WE HAVE A NEW LOOK —  
YOU CAN TOO!

**TEXTURE FOAM PERM**

REG. \$27.00 **NOW \$15.00**

— WITH THIS AD —

**439-2544**

**323 DELAWARE AVE.  
DELMAR, NY**

## Delmar group in new church

Full Gospel Fellowship, a non-denomination church, has been established in Delmar and is holding services in the Masonic Temple on Kenwood Ave.

The church, an independent Evangelical church, holds services Fridays at 7:30 p.m. and Sundays at 10:30 a.m. with Sunday School at 9:30. Home bible studies are held in various homes throughout the week.

Rev. Mark Bratrud, an ordained minister with the Fellowship of Christian Assemblies, serves as pastor. He is a graduate of Evangel College, Springfield, Mo., and did further study at Wheaton Graduate School, Wheaton, Ill. For information call 439-4407.

### Grange Initiates

The Bethlehem Grange recently initiated 13 new members. They are Lena Constantino, Arthur Drobner, David Hickey, Juanita, Betty, Linda and Michael Ortiz, Charles Stahlman, Debbie and Tammy Van-Alstyne and Patricia, Mari-beth and Lyle Wilkie.

## Shop Talk

by Judi James

The Noble Lion on Robinson Square in downtown Albany is a gift book shop which can't keep up with its orders and get the books in fast enough. On a Saturday, the children's book nook is usually haunted by youngsters sitting on the floor and looking through the wonderful books on the shelves. And, any day of the week, discriminating customers revel in the selections of books on all topics.

Pepi Noble is the owner and Andrew MacFarland is the manager of the Nobel Lion and they like to be known as book specialists. It is a deservant nommer, too, for if there's research to be done concerning the book for the occasion . . . they do it with zest. It doesn't phase them a bit if someone asks for "Rodgers" Book of Treasures! They know the customer means Roget's book. Pepi, though, said she almost didn't get one request . . . The young man mumbled that

he'd like a book on the Ginta philosophy. After mental handsprings, Pepi brightly said "Oh, you must mean Bhagavad Gita!" The young man brightened and, sure, that's the book he meant!

Humor is part of their lives at the Noble Lion, but knowledge is their forte. They do not deal in the paperback realm in general, but rather in the general trade of books. We mentioned the children's corner, and in our mind it's one of the best we've seen.

They have the classics, but they have the books the kids like best, which lead them up the literary path. One example is Shel Silverstein's book entitled, "Where the Sidewalk Ends." It's poetry, the sketches are intriguing, and the 10-year-old who reads it goes on usually to an interest in poetry both to read and compose.

Pepi recommended two other books, "The Giving Tree," a good human relations book for the second



### SHUTTLE HILL HERB SHOP

**Herbs & Spices**  
for cooking & for fragrance

**Fine Dollhouse Miniatures**

CORNER DELAWARE, ELSMERE AVE.  
DELMAR, BEHIND PHARMACY



## Phil Giaccone's

**SUNDAY BRUNCH**  
Served 11-2 • \$4.95


**Complete Dinner Specials**

<p><b>\$6.95 Specials</b></p> <p>Filet of Sole Stuffed Pork Chops Liver w/onions or bacon</p>	<p><b>\$7.95 Specials</b></p> <p>Veal Parmesan Alaskan King Crab and Sirloin</p>
---	--

*Each dinner includes:*  
homemade soup, salad, dessert & coffee

**LUNCHEON SPECIAL During July & August**  
**COLD SALAD BAR**  
Including Soup & Beverage **\$3.95**

**ALBANY MOTOR INN** **462-2962**  
(Formerly Schrafft's) **Rt. 9W Glenmont**



## Reilly and Son Funeral Home, Inc.

9 Voorheesville Ave.  
Voorheesville, N.Y.  
**765-3633**

**HERBERT W. REILLY, JR., LICENSED MANAGER**



grade level, and a fascinating Silverstein book called, "The Missing Piece."

Right now the window of the Noble Lion holds several books for the hostess in your life. If she loves to cook, she'll be interested in the full book put out by the Moosewood Inn in Ithaca. Developed because of their success in recipes for vegetarians, this is a book with taste-tingling recipes. There's another book called the "Dieter's Gourmet Cookbook," and one called "Summertime Cookbook" written by Marian Burros and Lora Levin, who wrote that wonderful hostess handbook entitled, "Elegant but Easy."

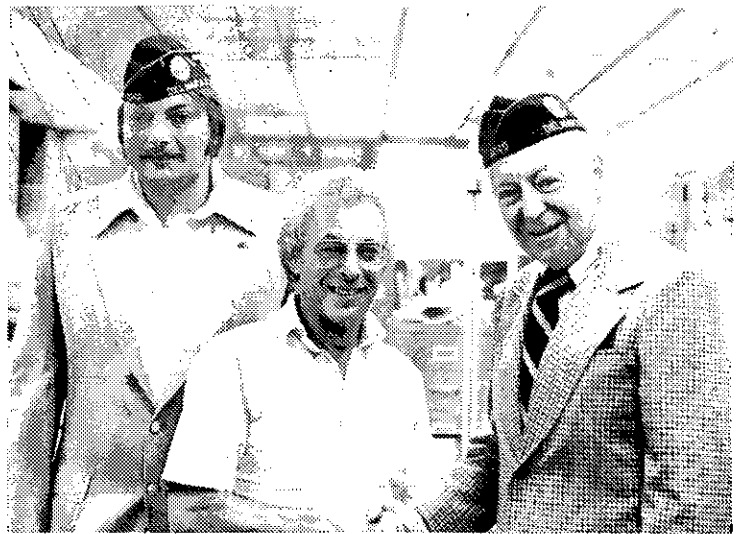
If you're a person who likes to pick up those little fun books to take along to a

favorite friend, there's a whole section of them we'd sort of like to get our hands on the one called, "Limericks Too Gross" or one called, "Whack your Porcupine!"

So, there you are, one more place to browse, to savor and to enjoy. We love books and enjoy an hour or so spent at the book specialists at the Noble Lion.

#### Concert on the lawn

The old-time music of fiddle, banjo, guitar, pennywhistle, bass, mandolin and hammered dulcimer will live the Bethlehem Library's next Evening on the Green. The July 30 program featured the Silver Strand Band, a seven-piece group who play contra dances.



Blanchard Post Past Commander Charles O'Hara congratulates Hy Rosen, center, with Commander Phil Giaccone at left.

*Spotlight*

#### Honor for Post 1040

A nomination made by Blanchard Post 1040, American Legion, Delmar, will be observed at the Legion's 62nd annual national convention Aug. 15-21 in Boston. The 1980 Fourth Estate Award will be presented to Hy Rosen, nationally recognized editorial cartoonist for the *Albany Times-Union*, for a series of cartoons depicting the agony and frustration of America's ordeal in the Iranian hostage crisis.

In the letter of nomination, Past Commander Charles J.

O'Hara of Post 1040 cited Rosen's "...philosophy very much in consonance with the philosophy, principles, policies and programs of the American Legion. His accomplishments in his professional field have been recognized nationwide as being very much a significant contribution to that school of journalism dedicated to the preservation of the American way of life."

In Voorheesville, the Spotlight is sold at the Grand Union and Voorheesville Pharmacy.



- Excavation
- Septic Work
- Demolition
- Water & Sewer Lines
- Trucking
- Snow Plowing

### BAILEY EXCAVATION, INC.

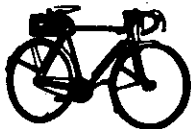
Office 463-6363 / Shop 765-2568

## Professional Auto & Bike

- Car Parts & Accessories
- Touch Up Paint & Supplies



- Bike Parts & Accessories



Clean • Lube • Adjust  
**\$14.95**

**BMC SHOCKS**

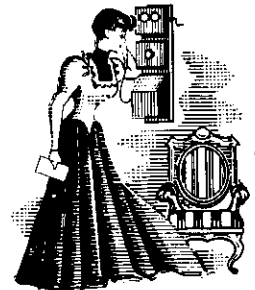
**\$5.95 ea.**

(while they last)

**At The 4 Corners**

**439-4931**

# TIMES HAVE CHANGED



Is your policy still adequate?

Alex Snow

call

Joann Pacyna

**OLOF H. LUNDBERG AGENCY  
TUCKER SMITH AGENCY**

159 Delaware Avenue, Delmar 12054  
439-7646



# 'Hillbillies' band like Topsy—it just grew

They get together whenever they can—maybe once a month—for the pure joy of it, a rollicking, happy group of neighbors, the Salem Hillbillies country-western band.

They assembled last Wednesday in the basement of Bill and Tomi Corbett's Colonial on Derby Ct., Voorheesville, on one of the hottest nights of the year, and again Sunday night at Tom and Alice Mensching's on Fairfield Ct. and made the walls bulge with music and singing. The latest burst of activity is in preparation for the Salem Hillbillies' scheduled band concert at Evergreen Memorial Park in Voorheesville at 7 p.m. Sunday, July 27.

It started by spontaneous combustion, a backyard group of Salem Hills neighbors who played musical instruments or sang. Jack Toritto, an insurance man who plays the bass, didn't realize what he was launching when he invited a bunch of neighbors to bring their guitars to his backyard on Salem Ct. one night in June, 1979. The group's

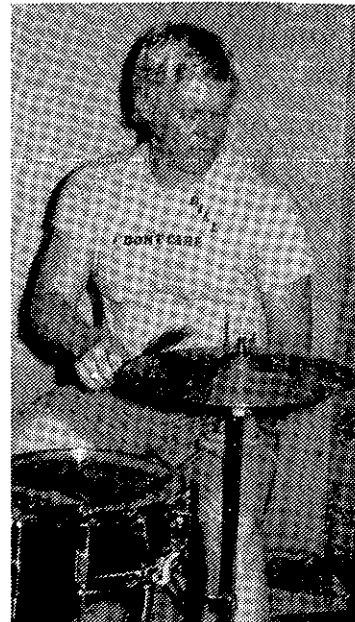
first "performance" came two months later at Diane and Joe Deeley's corn roast on Deerfield Ct. Labor Day weekend.

"We must have sounded pretty good, because we were asked to play at the St. Matthew's parish picnic a couple of weeks later," Jack recalled.

Toritto started with a wash-tub bass—a movable stick strung with gut implanted in a turned-over metal tub—and has since graduated to the real bass instrument. He has MC'd the kids' dance recitals in New Salem, and Lyza Neuffer, the Hillbillies' effervescent publicist and singer, calls him "a real showman."


Through Schenectady's

youth hockey program, where Jack's 12-year-old son plays and another Salem Hills homeowner coaches, Jack met Bill Corbett, a transplant from Massachusetts who was a professional drummer before coming to Voorheesville four years ago. Corbett, 39, once played with Tex Ritter. In the Lowell-Lawrence area, which he says is "a hotbed of country-western music," Corbett played in a night club three nights a week. His appraisal: "Over there when it snowed, they closed the schools and the factories,



Bill Corbett

**RUSTPROOF  
YOUR CAR TODAY**

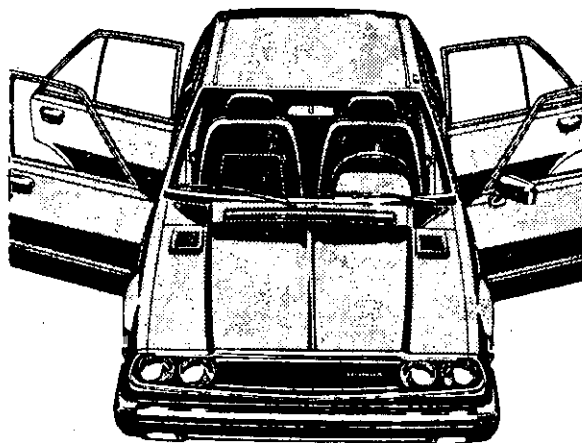


New  
Used

**Joe Keller  
SERVICE STATION**

GLENMONT

**COMFORT  
&  
ECONOMY  
JULY DELIVERY**  
CHOICE OF 5 SPD'S OR AUTO'S



Hondas are simple to drive, park, own, and enjoy. Our newest addition to the Accord line, the 4-Door Sedan, is simple to enter. We've made simplicity a little bigger.

**HONDA**  
We make it simple.




**266 DELAWARE AVE., DELMAR  
439-8151  
"Delmar Auto Plaza Ltd."  
SALES—PARTS—SERVICE**

N W

**YOU CAN SEND YOUR CHILD TO TENNIS CAMP  
IN ALBANY**

Mon. to Fri.  
9 a.m. to 12:30 p.m.  
1 WEEK SESSIONS



**\$35 per week**  
Ages  
8 to 17½ yrs. old



**Call 436-0838  
For Brochure**



**southwood**

**TOTAL TENNIS CLUB**

INDOOR COURTS • JUNIOR PROGRAMS

Rt. 9W & Southern Blvd.  
(at Thruway Exit 23)  
Albany



Tom Mensching, left, and Jack Toritto, right, swing into "Ruby" in rehearsal.

but they never closed the lounges."

At the church picnic last summer the impromptu group made a big hit. There were seven of them, Jack on his washtub, Bill on his drums, Curt Schultz and Diane Deeley on guitar, Tom Mensching, a professional musician, on accordin, and

Alice Mensching and Lyza doing the vocals.

In the audience was Linda Hladun, an accomplished guitarist, and Linda has been with them ever since.

For Sunday's concert in the park, the Hillbillies are adding two "guest stars"—Gary Beadnell, who plays the electric guitar, and Dave Burn-

ham, popular Voorheesville sixth grade teacher who once sang professionally with the Ohio Express, a rock group. They had hoped also to have Mike Perry, a local student at the Crane School in Potsdam who plays trumpet, cornet and flugel horn, but at last week's rehearsal Mike sent word he wouldn't be able to get off from his summer job at Picard's Grove that night.

If Jack was the original ringleader, it's Tom Mensching whom the group regards as its professional. Tom played on Long Island before doing professional engagements in the Albany-Schenectady-Saratoga area. Says Tom, a Voorheesville resident for 11 years: "I still have my

union card, but I don't play anymore. We have a lot of fun here, and we try not to take ourselves too seriously."

In the rehearsal in the Corbets' basement they were having fun along with a prideful effort to make good sounds. Blond Bill Corbett happily played his drums in shorts and bare feet, there was plenty of soda and Lite on ice in the picnic cooler along the wall, and some of their kids sat on the floor and beat time with the music. Dave Burnham showed up a little late, after a softball game, wearing the red-and-black uniform of the Voorheesville Fire Dept., uncapped a cold beer and swung right into the vocal of "Ruby." In the far corner, near a basement window, Jack Toritto heard the rain start as a summer shower swept through the village, and Greg Toritto, 12, was sent scurrying out to roll up all the car windows outside.

They have a wonderful bond, their music, their neighborhood spirit in the gregarious Salem Hills development dominated by young couples 35-45 and their growing families, and their togetherness. Alice, a teacher at the elementary school, does Irish numbers, Lyza does solos and chorus, and Diane plays and sings. On Sunday you'll see Diane, a dynamic blonde sprite at 4-foot-11, playing a guitar almost as big as she is and singing "Five Foot Two and Eyes of Blue."

"We're gonna get her a soap box," said Lyza. "She's gonna wear heels," cracked Bill.

She's also going to add her voice to Lyza's, Linda's and

**Reds**

Seafood Restaurant Inc.  
Rt. 9W, W. Cxsackie, N.Y. 12192  
N.Y.S. Thruway Exit 21B  
1-731-9905

**It's mid-July already!  
Don't let the summer slip by.  
Make some plans that include us.**

**We're  
OPEN 7 DAYS  
July thru Sept. 1st  
Lunch-Dinner 11:30-9:30**

*Seafood is right,  
No matter what the temperature!*

**L.C. SMITH**

**Lawn and Garden Equipment**

**154-B DELAWARE AVE., DELMAR  
(NEXT TO DELAWARE PLAZA)**

**PHONE  
439-9746**

**SAVE \$35<sup>00</sup>**

**JACOBSEN MULCHER Reg. \$234<sup>95</sup>**

**SALE PRICE ONLY \$199<sup>95</sup>**

*(Subject to stock on hand)*



Chordettes, Voorheesville style: Linda Hladun, left, Diane Deeley, Alice Mensching and Lyza Neuffer rehearse "Mister Sandman." On the cover: Lyza with Dave Brunham, left, and Gary Beadnell. They will appear in a concert in the village Sunday.

Alice's in a Salem Hills rendition of the Chordettes classic, "Mister Sandman." Also on Sunday's program are "Proud Mary" and "Evil Ways" along with Dave's "Ruby," and Curt and Lyza will have the joint jumping with "Jackson."

The only sad note is the "For Sale" sign in front of the Corbett's gray Colonial. Bill, a motor truck sales manager, and Tomi are being transferred back to Massachusetts, and the Hillbillies will have to find themselves a new drummer before the parish picnic and the PTSA Variety Show next year.

Nat Boynton

#### BETHLEHEM

### Teachers' contract talks stepped up

Negotiators for the Bethlehem Central school district and the Bethlehem teachers' union scheduled another session this week in an effort to reach a contract settlement before school starts in September.

Mid-summer negotiating sessions have been a rarity in Bethlehem in past years with Gordon Mulleneax, former chief negotiator for the local union, accustomed to taking off several months on property he owns in Canada. The result in the past several

contract negotiations was a delay that lasted well into the school year and often resulted in job actions by members of the Bethlehem Central Teachers Assn. (BCTA).

Two meetings were held last week, and further sessions are expected to be scheduled over the next several weeks, if necessary. The union's latest three-year contract expired June 30.

This year the BCTA negotiating team has been meeting regularly with Joseph Kelly of Thealon Associates, consulting firm retained by the school board, and Franz Zwicklbauer, business administrator for the school district. Representing the union are Ellen Otis, Warren Stoker and William Ninness, with John Phillips of the New York Educators' Assn. (NYEA), the state union of which the BCTA is an affiliate, as negotiator.

Spotlight

If your Spotlight doesn't come Thursday, call 439-4949.



This gracious colonial shows the hard work and loving care that has been lavished on it. Four bedrooms, 2½ baths, den, study, screened porch — you name it — this home has it! All it needs is your family ..... \$119,500

**FORESITE Properties, Inc.**

Helen Eaton

Lori Breuel

**439-8129**

FOR NEWS....WEATHER....SPORTS

and the **BIG BAND SOUND**

**I ♥ WABY**

Real Radio 14

# Newsgraphics, Inc.

**--- HAVE YOU HEARD?**

that Newsgraphics, Inc.  
(Publisher of The Spotlight)  
has a  
Complete Composition Dept.

- Phototypesetting
- Design and Layout
- Offset Camera
- Advertising
- Original Illustration



## Newsgraphics, Inc.

(Publisher of The Spotlight)

414 Kenwood Avenue  
Delmar, NY 12054

439-4949



Ken McNary receives bugle from Jack Brennan, president of Elsmere Fire Co. A, for 50 years of service.

### ELSMERE

#### Firemen honor 50-year member

At its recent installation dinner the Elsmere Fire Co. honored Ken McNary for 50 years of active service in the company. He was presented with a bugle, the traditional symbol of the fireman, for his service which began in January, 1930.

First elected an officer in 1933, Ken had risen to chief by 1942. After a three-year stint in the U.S. Army, he returned to Elsmere in 1946 and was elected chief from 1946 to 1952. He served as a fire commissioner for the district for 15 years, stepping down in 1968. In 1977 he was again elected to the board and is currently serving as a commissioner.

McNary was selected as New York's first state fire

instructor, principally teaching the techniques of oil fire control. He arranged for his employer, Mobil Oil Co., to donate a number of fire training aids to the town of Bethlehem for use with its fire training tower. Ken also was instrumental in the recent establishment of a historical room at the Elsmere fire house.

He continues to be active in the fire company, conducting fire safety and prevention programs in local elementary schools.

#### Promoted at Thruway

Bernard J. McHugh of Delmar was recently promoted to director of the Thruway Authority's department of finance and accounts. McHugh, a Siena College graduate, previously served as director of the Authority's bureau of auditing.

## Albany Auto Radiator

Expert Radiator Repairs  
1758 Western Avenue  
Albany

Mon.-Fri.  
8-5

456-5800

Sat.  
8-12

## Janice Levine bride

Miss Janice Levine, daughter of Barry Levine of Delmar and Mrs. William Craft of Selkirk, and Joseph Siniski, son of Mrs. Roberta Siniski of Albany and the late Alexander Siniski, were married June 28 at St. James Church, Albany.

The bride was attended by her sister, Mrs. Diana MacFarland, maid of honor, and Kim Levine, Tracy Levine and Susan Maraglio, bridesmaids. Best man was Charles Tiongson and the ushers were Butch Levine, Paul MacFarland and Mark Maraglio.

Mrs. Siniski is a graduate of Bethlehem Central High School and is employed by the State Bank of Albany. Her husband is a graduate of Christian Brothers Academy and is employed by Key Banks. After a honeymoon on Cape Cod, they are residing in Delmar.

## Grant to library

The New York Council for the Humanities has awarded the Bethlehem Library a grant to present a series of films and writers May Sarton, Meridel LeSueur, Anias Nin, Lorraine Hansberry, Marge Piercy, Meruel Rukeyser, Denise



**Mrs. Joseph Sinisky**

Levertov and Gwendolyn Brooks. Addressing them will be scholars from Skidmore, SUNYA and Russell Sage, including Judith Fetterly, Judith Barlow, Susan Kress, Joan Schulz, Judith McDaniel, Sharon Robinson and Linda Berry. The series, which will take place from September to December in the library, is free and open to the public.

## Home talent show

Bethlehem Library's final Evening on the Green next month will feature a talent show by the local children. Any child under the age of 14

who would like to perform in the Aug. 27 show, may register in the children's room before Aug. 15.

## Miller-Adams

Mr. and Mrs. John R. Miller of St. Clair Dr., Delmar, announce the engagement of their daughter Pamela, to Charles Adams, son of Mrs. Eugene Adams of Guilderland.

Miss Miller is a graduate of Bethlehem Central High School and SUNY at Cobleskill. Her fiancé graduated from Berne-Knox-Westerlo High School.

An August wedding is planned.

## Junco-Flint

Mr. and Mrs. Manuel Junco of Long Lake, formerly of Delmar, announce the engagement of their daughter, Karen, to Giles John Flint, Jr. of West Berne.

Miss Junco is a graduate of Bethlehem Central High School and is employed by Blue Cross and Blue Shield of Northeastern New York. Her fiancé is a graduate of Berne-Knox-Westerlo High School. He works with J.J. Cillis Builders of Voorheesville.

An Oct. 18 wedding is planned.

**Tennis Rackets**  
*Restrung and Regripped*  
**Violins Repaired**  
**Bows Rehired**  
**C.M. LACY**  
 3 Becker Terrace • 439-9739

## LAWN-BOY Electric Line Trimmer With

## AUTO LINE FEED

### Model LB100E

- Automatic line feed standard
- 56-inch overall length lends handling ease
- Lightweight—only 6½ pounds
- Cleanable air filter for motor protection
- Heavy-duty ribbed motor housing
- High-torque, 24 bar commutator electric motor develops 1 H.P.
- 13-inch diameter trim swath

- Free**
- 2 extra motor air filters
  - 2 extra prewound line cartridges (automatic line feed)

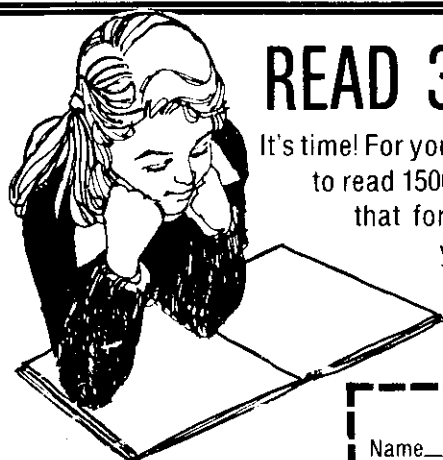
Prices **\$19<sup>95</sup>**  
 Start at

LAWN-BOY Trimmers are manufactured for Lawn-Boy by K & S Industries, Inc., Fort Worth, Texas.

## Power for Performance LAWN-BOY

**Hillcrest Garage**  
**Lawn & Garden Shop**  
 Rt. 9W, Ravena  
 756-8440

July 28-Sept. 1  
 Closed Mondays  
 July 31-Sept. 4  
 Closed Thurs. nights



## READ 3 to 10 TIMES FASTER

It's time! For you to improve your reading skills. Wouldn't it be nice to read 1500 words per minute? You know it would. We can do that for you. **ACCELERATED LEARNING** is a Latham based year round school offering courses in: Improved Reading (speed reading), Remedial Reading and Math, as well as unique finger math techniques, for grades K-6.

For information call **783-7851**  
 or fill out coupon and mail to:  
**ACCELERATED LEARNING CORP.**

1042 Troy-Schenectady Road  
 Latham, NY 12110

Coupon entitles you to a  
 10% cash discount.  
 MasterCard/Visa accepted.  
 Our Teachers are all N.Y.S. Certified.  
**FREE INTRODUCTORY CLASS**

(SP 7/24/80)

Name \_\_\_\_\_ Age \_\_\_\_\_

Address \_\_\_\_\_

City \_\_\_\_\_ Zip \_\_\_\_\_

Telephone (\_\_\_\_\_) \_\_\_\_\_

SPEED READING ☐ REMEDIAL ☐  
 FINGER MATH ☐ PROGRAMS ☐

## BASEBALL

### Defensive lapses cost Blue Jays

The Delmar Blue Jays' image as one of the best fielding teams in the area was tainted over the weekend when the Jays dropped three out of four to the strong Milford Macs on the road.

A controversial call by the plate umpire at Cooperstown contributed to a 3-2, 7-6 debacle at Doubleday Field Saturday in which Delmar outhit the Macs in both games. On Sunday at Milford the Blue Jays committed defensive felonies in a 7-1 setback after John Mac-

Donald had spun a masterful four-hitter for a 3-2 Delmar win.

The Blue Jays will be at BCHS field Saturday for a Capital District League doubleheader with the Colonie Shamrocks starting at 12:30, and go to Rotterdam Sunday for another league game. "I'm optimistic things will change quickly," said a disappointed Rudy Toffenetti. "We have been losing because of sloppy play that's out of our character, and when that happens, the hard line drives we hit right at somebody."

Before a good Saturday crowd, the Jays surrendered a leadoff homer, then came

back with two runs on Mark Kleinke's single and doubles by Ken White and Ken Gall, only to give up a two-run homer with two out and two strikes on the batter. There was no further scoring as Delmar outhit the Macs, 10-6. In the nightcap, Rick Lombardo had a 6-2 lead with one inning to go when his arm stiffened. Jeff Rose yielded four runs in the seventh as Kleinke missed a shoestring catch that would have ended the game and instead sent it into overtime. Jack Dalton pitched two scoreless extra innings, but walked two in the 10th and gave up a sudden-death single.

Kleinke was 4-for-7 on the day and make two circus catches in center. The Blue Jays played without their two top hitters, George Rafferty (.595), out with a cut hand, and Steve Wallack (.430), who couldn't leave his job. Mickey Brantley hit Delmar's only homer of the weekend with a shot over the 335-foot sign in Sunday's second game, his third of the year. Brantley also leads in stolen bases (14 for 15) and runs (22).

### New courses added

Two new programs approved by the State Education Dept. have been added to the business department at Maria College, Albany. Open for enrollment for the fall semester are the office management program, a two-year course leading to an associate in applied science degree, and word processing offered both as a day and/or evening option as one-year certificate program.

## SUPPERTIME BUDGET TIP



Skillet dish saves money.

When dinner hour catches you by surprise, here's a great beefy dish. It's a western version of traditional Shepherd's Pie that uses Campbell's Chunky Beef Soup as its base—it rustles up pronto and is easy on the budget.

### COWPOKE SKILLET

- 4 slices bacon
- 1/2 c. chopped green pepper
- 1/2 c. chopped onion
- 1/4 tsp. marjoram leaves, crushed
- 2 cans (19 oz. each) Campbell's Chunky Beef Soup
- 1 can (about 8 oz.) whole kernel golden corn, drained
- 1 Tbsp. cornstarch
- 2 Tbsp. water
- 3 c. prepared mashed potatoes
- 6 Tbsp. grated Parmesan cheese

In saucepan, cook bacon until crisp; remove and crumble. Pour off all but 3 Tbsp. drippings. Cook green pepper and onion with marjoram in drippings until tender. Add soup, corn and bacon. Blend cornstarch and water until smooth; add to soup mixture. Cook, stirring until thickened. Meanwhile, combine potatoes and cheese. Top beef mixture with potatoes. Makes about 5-1/2 cups, 4 servings.

## KAREN'S KORNER

154-B Delaware Ave., Delmar

(next to Delaware Plaza)

Summer Hours:

Wednesday and Friday 10:00 til 4:30

Thursday 10:00 til 8:00 (and by appointment)

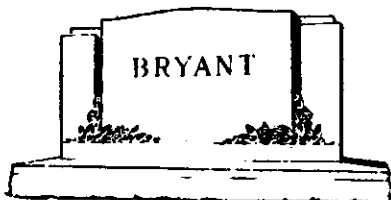
SUMMER CLEARANCE SALE

Next-to-New Shop

Clothing, Boots, Skates

For more information 439-5050

## EVER READY TO SERVE The families of this area with BEAUTIFUL MEMORIALS



In our Memorials the highest quality material is used, and the finishing is entrusted only to skilled craftsmen. Any time you have in mind erecting a Memorial . . . no matter how simple or elaborate . . . we shall consider it a privilege to be of service to you.

*The Old Reliable*  
**EMPIRE MONUMENT COMPANY**

Cemetery Avenue (Off Broadway) Menands  
Entrance to St. Agnes & Albany Rural Cemeteries  
For your convenience open 7 days a week  
Phone 463-3323 or 463-3077

**Service Designed  
with  
YOU in Mind**



**Tony Tubiolo Home Improvements**

GENERAL CONTRACTING  
CARPENTRY • HOME REPAIRS

**439-7730**

# BASEBALL

## Babe Ruth playoffs to start

The Bethlehem Babe Ruth post-season tournament will get under way Monday at the Middle School field in Delmar as the final regular season competition winds up this week.

The tournament, sponsored by the Bethlehem Veterans of Foreign Wars Post and dedicated to the late Darwin Field, will run through Friday, Aug. 1. Games will start each night at 6 p.m.

General Electric virutally wrapped up the regular season championship last week with a 12-0 whitewash of Blue Cross-Blue Shield. Bob Kistler spun a one-hitter and

contributed a home run and two singles while Stu Allaway belted a grand slam and added two singles. Professional Auto Parts, 1979 champions, climbed out of the basement with victories over GE, 8-5, and Main Care, 10-2. Mark Verstandig stopped Main Care on two hits while John Hayes and Bill Callanan had two singles apiece.

### BETHLEHEM BABE RUTH Standings July 20

	W	L		W	L
Gen. Elec.	10	2	Prof. Auto	5	7
Nat. Sav.	6	5	Skippy's	4	7
Main Care	6	6	Blue Cross	4	8

### VOORHEESVILLE BABE RUTH Standings not received.

### BETHLEHEM TOMBOYS Standings July 20 MAJOR LEAGUE

	W	L		W	L
R. Studio	10	3	Tri-Vil. Drug	4	11
Beth. Mas.	10	3	C.Y.C.	2	11

### INTERMEDIATE

	W	L		W	L
*Germann	6	0	Buenau	3	3
Chan. 10	4	2	Beth. Elks	3	3
N. Dunston	3	2	Sutter's	1	5
Gen. Elec.	3	3	Sportshoes	1	5

\*Winner second half championship.

### MINOR LEAGUE

	W	L		W	L
*BPW Ref.	6	1	Farm Fam.	4	3
Bryant	5	3	U.N. Bank	3	4
At. Cem.	4	3	Denby's	3	4
Spotlight	4	3	Vogel's	1	6
Brockley's	4	3			

\*Winner second half championship.

Tie - Atlantic Cement, Spotlight.

### CHURCH SOFTBALL

#### Results July 17

Methodist 11, Bethany 10 (8)  
St. Thomas 3, Presby. 2  
Voorville 14, Albany 13  
Glenmont 11, Del. Ref. 0  
Cluster 10, Beth. Luth. 6  
Beth. Com. 16, St. Steph. 10  
Colonie 7, New Scot. 0  
Wynants 2, Knox 1

#### Standings

	W	L		W	L
Cluster	11	1	Beth. Luth.	6	6
St. Thom.	11	1	Beth. Comm.	5	7
Colonie	9	3	Del. Meth.	5	7
Del. Presby	9	3	New Scot.	3	9
Glenmont	8	4	St. Steph.	3	9
Wynants	8	4	Fst. Church	2	10
Knox	7	5	Bethany	2	10
Voorville	7	5	Del. Ref.	0	12

**HATE TO COOK?  
TOO BUSY?**

CALL

**Personal  
Dining Service**

LARGE OR SMALL DINNER PARTIES  
DINNER FOR TWO

439-2642

# Chez René

## FRENCH RESTAURANT

Serving Dinner Daily 5-10 P.M. — Closed Sun. & Mon.

463-5130

— Gift Certificates Available —

Rte. 9W, Glenmont, 3 miles south of Thruway Exit 23

## Grand Opening To some the height of elegance. To you, it can be home.



Chadwick Square. A home. A community. A lifestyle for the 80's to call your own. The luxurious 2 story Carriage Homes of this exclusive neighborhood have been carefully designed to provide privacy, energy efficiency, easy maintenance and



an elegant setting for full scale entertaining. Inside, a world of light and space, sunny green house kitchens, open balconies overlooking airy living rooms, romantic sleeping quarters with bath and dressing areas, all providing retreat from your hectic professional life. Outside —



tennis courts, a community size pool, bike and jogging paths invite you to live life the only way you know how —

without compromise.

Directions: From Thruway Exit 23 or I-787, take US 9W South, right at Feura Bush Road, left on Wemple Road to Chadwick Square 1/2 mile on the left.

**Chadwick  
Square**  
CARRIAGE HOMES  
P.O. Box 65, Glenmont, New York 12077  
518-439-7643

**Rosen-Michaels**

**OPEN EVERYDAY 11 A.M. to 7 P.M.**  
3 FULLY FURNISHED MODELS

 EQUAL HOUSING OPPORTUNITY

This advertisement is not an offering which can only be made by a formal prospectus.

 **HOM**



# Legal Notice

## NOTICE OF ADOPTION OF RESOLUTION SUBJECT TO PERMISSIVE REFERENDUM

NOTICE IS HEREBY GIVEN that at a Special meeting held on the 14th day of July, 1980, the Town Board of the Town of Bethlehem duly adopted a resolution, an abstract of which follows, which resolution is subject to a permissive referendum pursuant to Article 7 of the Town Law of the State of New York.

The resolution extends the existing Bethlehem Sewer District to include an area described below and finds it in the public interest to construct outlets, drains, disposal plants, pumping stations and other sewer system facilities in that area at an estimated maximum cost of \$2,003,000.00, the cost of which shall be borne by property owners especially benefited by the improvements, and to construct lateral sewers in such area at an estimated maximum cost of \$2,690,000.00, the cost of which shall be assessed by the Town Board in proportion as nearly as may be to the benefit which each lot or parcel of land within the proposed extension will derive therefrom:

The area of the extension is as follows:

### DESCRIPTION PROPOSED EXTENSION NO. 14 TO BETHLEHEM SEWER DISTRICT

#### AREA NO. 1

Beginning at the point of intersection of the town line between the Town of Bethlehem on the southeast and Town of New Scotland on the northwest with a line which is 250 feet northerly of and parallel to the centerline of Font Grove Road, said point of beginning also being a northerly corner of Extension 8 to the Bethlehem Sewer District; thence running from said point of beginning northeasterly and along said town line 15,000 feet, more or less, to its point of intersection with a southerly line of the Town of Guiderland; thence easterly along the town line between the Town of Bethlehem on the south and the Town of Guiderland on the north, 5,400 feet, more or less, to its point of intersection with the centerline of the Krum Kill; thence in a general southerly direction along the centerline of the Krum Kill as it winds and turns and along the boundary between the City of Albany and the Town of Bethlehem 5,800 feet, more or less, to its point of intersection with the southerly line of Krumkill Road; thence in a general easterly direction continuing along the boundary between the City of Albany and the Town of Bethlehem 1,950 feet, more or less, to a point in the southeasterly boundary line of N.Y. State Route 85; thence in a general southwesterly direction along the southeasterly boundary of Route 85 through its various courses and continuing along the boundary between the City of Albany and the Town of Bethlehem 9,600 feet, more or less, to a point in the centerline of the Normans Kill; thence in a general southerly and easterly direction and along the centerline of the Normans Kill as it winds and turns and continuing along the boundary between the City of Albany and the

Town of Bethlehem 9,700 feet, more or less, to a point in the northerly prolongation of the westerly line of the Normanside Country Club Extension; thence southerly along said prolongation 50 feet, more or less, to a corner of the Normanside Country Club Extension; thence southerly along the westerly boundary of said extension 1,154 feet, more or less, to a point; thence southerly with an interior angle of 155°-03'-55" 50.10 feet to the northwesterly corner of the Salisbury Road Extension; thence continuing southerly and along the westerly line of the Salisbury Road Extension 494 feet, more or less, to a point in the northerly line of the original Delmar-Elsmere Sewer District, now known as the Bethlehem Sewer District; thence westerly along the northerly line of said Bethlehem Sewer District 1,300 feet, more or less, to a stone monument 200 feet northwesterly of the center of a circular plot at the end of Sunset Drive; thence southerly and along the Bethlehem Sewer District 2,150 feet, more or less, to a point marked by a stone monument 200 feet northwesterly of the center of a circular plot at the end of Groesbeck Place; thence westerly along the northerly line of said Sewer District 4,870 feet, more or less, to a point which is 1,440 feet from the centerline of Kenwood Avenue; thence westerly along the lot lines of Gardner Terrace and at right angles to the centerline of said Gardner Terrace 660 feet, more or less, to a point which is 250 feet westerly of the centerline of Gardner Terrace; thence southwesterly along said Sewer District 670 feet, more or less, to a point in the southerly line of the Delaware & Hudson Railroad, said point also being the northeasterly corner of Extension No. 6; thence westerly and along the northerly line of Extension No. 6, 633 feet, more or less, to a point, said point being the northeasterly corner of Extension No. 12, known as the Equinox Extension, to the Bethlehem Sewer District; thence westerly and along the northerly line of Extension No. 12, 1,320 feet, more or less, to the northwesterly corner thereof; thence southerly along the westerly line of Extension No. 12, 145 feet, more or less, to a point in a line 200 feet northerly of and parallel to the centerline of Kenwood Avenue, said point also being the southwest corner of Extension No. 12; thence westerly along the line 200 feet northerly of and parallel to the centerline of Kenwood Avenue and along Extension No. 8 to the Bethlehem Sewer District 475 feet, more or less, to a point 250 feet easterly of the centerline of Bridge Street; thence northerly and westerly and along a line 250 feet easterly and northerly of the centerline of Bridge Street 1,000 feet, more or less, to a point 250 feet southeasterly of the centerline of McCormack Road; thence northeasterly and along a line 250 feet southeasterly of and parallel to the centerline of McCormack Road 1,500 feet, more or less, to a point; thence northwesterly and along a line parallel to and 250 feet northeasterly of the centerline of Maple Avenue and the centerline of Couse Lane 2,250 feet, more or less, to a point 500 feet westerly of the centerline of New Scotland Road; thence southerly and westerly and along a line 500 feet westerly and northerly of the centerline of New Scotland Road, 2,400 feet, more or less, to a point 250 feet northerly of the centerline of the Delaware & Hudson Railroad; thence westerly and along a line 250 feet northerly of and parallel to the centerline of the Delaware & Hudson

Railroad, 500 feet, more or less, to a point, said point being a corner of Extension No. 11, known as the Lyndhurst Extension to the Bethlehem Sewer District; thence around the Lyndhurst Extension the following directions and distances:

N. 43°-04'-42" E. 511.64 feet;  
S. 38°-06'-51" E. 575.52 feet;  
N. 32°-38'-54" E. 139.50 feet;  
N. 61°-23'-55" E. 675.53 feet;  
N. 02°-36'-05" W. 34.98 feet;  
N. 25°-48'-20" W. 228.36 feet;  
N. 73°-18'-20" W. 95.04 feet;  
N. 37°-18'-20" W. 162.36 feet;  
N. 49°-33'-20" W. 274.56 feet;  
N. 25°-59'-20" W. 122.10 feet;  
N. 47°-59'-20" W. 217.80 feet;  
N. 55°-44'-20" W. 222.54 feet;  
N. 25°-53'-00" W. 211.86 feet;  
N. 56°-08'-00" W. 196.68 feet;  
N. 53°-23'-00" W. 227.04 feet;  
S. 75°-52'-00" W. 729.30 feet;  
S. 33°-38'-00" E. 343.40 feet;  
S. 45°-30'-32" W. 767.11 feet;

to a point in the boundary line of Extension 8, said point being 250 feet northerly of the centerline of Font Grove Road; thence westerly along a line 250 feet northerly of and parallel to the centerline of Font Grove Road, 2,000 feet, more or less, to the place of beginning, containing 4.5 square miles, more or less; intending to include all lands in the Town of Bethlehem northerly of the Bethlehem Sewer District and Extensions 6, 8, 11 and 12, and westerly of the Normanside Country Club and Salisbury Road Extensions to said Sewer District.

#### AREA NO. 2

Beginning at the point of intersection of a line 1,000 feet southerly of the centerline of Delaware Avenue with a line 750 feet westerly of the centerline of Van Dyke Road, said point being a corner of Extension No. 8 to the Bethlehem Sewer District; thence running from said point of beginning easterly along a line parallel to and 1,000 feet southerly of the centerline of Delaware Avenue and along Extension No. 8, 766 feet, more or less, to a point in the easterly line of Van Dyke Road; and along Extension No. 8, 1,740 feet, more or less, to a point, said point being the southwesterly corner of lands of the Bethlehem Central School District; thence the following courses and distances along lands of said school district and along Extension No. 8:

N. 76°-52'-14" E. 250 feet;  
S. 13°-07'-46" E. 150.29 feet;  
N. 76°-52'-14" E. 237.03 feet;  
N. 05°-20'-16" W. 118.71 feet;  
N. 68°-23'-05" E. 303.60 feet;

thence continuing easterly along said school district and along said Extension No. 8, 1,307.46 feet; thence continuing easterly with an interior angle of 184°-31'-44" 323.03 feet to a point; thence northerly with an interior angle of 238°-06'-37" and continuing along said Extension No. 8 and along said school district 396 feet, more or less, to a point 250 feet westerly of the centerline of Elm Avenue; thence southerly and along a line parallel to and 250 feet westerly of the centerline of Elm Avenue 2,100 feet, more or less, to a point in the westerly extension of the northerly bounds of the Delmar By-Pass, Route No. 32; thence easterly and along said Extension No. 8 and along said northerly bounds of the Delmar By-Pass, 2,150 feet, more or less, to a point 250 feet southwesterly of the centerline of Murray Avenue; thence southeasterly and along a line parallel to and 250 feet southwesterly of the centerline of

Murray Avenue and continuing along said Extension No. 8, 3,200 feet, more or less, to a point in the easterly line of lands owned by the City of Albany for its water conduit line; thence southerly and along the easterly line of said lands of the City of Albany 5,400 feet, more or less, to a point 250 feet westerly of the centerline of Elm Avenue aforesaid, said point being a common corner of Extensions No. 8 and No. 9 to the Bethlehem Sewer District; thence the following courses and distances along said Extension No. 9:

S. 34°-15'-00" W. 215 feet, more or less;  
N. 78°-30'-50" W. 108.46 feet;  
N. 34°-15'-00" E. 470.04 feet;  
N. 08°-13'-40" E. 304 feet;  
N. 66°-56'-10" E. 121.96 feet to a point in the westerly line of Elm Ave. aforesaid;  
N. 02°-47'-09" W. 157.47 feet;  
N. 01°-47'-44" W. 100 feet;  
N. 0°-11'-01" E. 32.02 feet to a point in lands of the Tennessee Gas Transmission Company;  
N. 69°-35'-39" W. 233.76 feet;  
S. 34°-21'-30" W. 214.12 feet;  
N. 55°-01'-49" W. 149.40 feet;  
N. 16°-50'-31" E. 165.28 feet;  
N. 69°-31'-44" W. 40 feet, more or less,

to a point 500 feet westerly of the centerline of Elm Avenue; thence northerly and along a line parallel to and 500 feet westerly of the centerline of Elm Avenue, 1,500 feet, more or less, to a point 500 feet southerly of the centerline of Feura Bush Road; thence westerly along a line 500 feet southerly of and parallel to the centerline of Feura Bush Road, 1,500 feet, more or less, to a point in the centerline of New York State Route 32; thence northerly and along the centerline of Feura Bush Road 100 feet, more or less, to a point; thence in a general northwesterly direction and along southwesterly lines of lands of the Town of Bethlehem Elm Avenue Park, 4,000 feet, more or less, to a point 750 feet southerly of the easterly prolongation of Franklin Street; thence westerly along the line parallel to said prolongation and parallel to the centerline of Franklin Street and the westerly prolongation of Franklin Street, 3,100 feet, more or less, to a point 750 feet westerly of the centerline of Van Dyke Road; thence northerly and along a line parallel to and 750 feet westerly of the centerline of Van Dyke Road, 4,300 feet, more or less, to the point of beginning, containing 1.1 square miles, more or less.

#### AREA NO. 3

Beginning at the point of intersection of a line 400 feet northerly of and parallel to the centerline of Hackett Street with a line 50 feet northeasterly of and parallel to the centerline of the most northeasterly track of ConRail, said point being a westerly corner of Extension 8 to the Bethlehem Sewer District; thence in a general northwesterly direction and along the line 50 feet northeasterly of the centerline of the most northeasterly track 4,300 feet, more or less, to a point in a line which is 500 feet southeasterly of and parallel to the centerline of New York State Route 396; thence northeasterly and along the line 500 feet southeasterly of the centerline of Route 396 850 feet, more or less, to a point in a line 500 feet northeasterly of the centerline of a private roadway through Breckenridge Village; thence southeasterly and along the line 500 feet northeasterly of the centerline of said private roadway 2,000 feet



more or less, to a point; thence easterly and along a line at right angles to Route 9-W and passing through the intersection of Route 9-W and Cottage Lane 700 feet, more or less, to a point in a line 250 feet easterly of and parallel to the centerline of said Route 9-W; thence southerly and along said line parallel to Route 9-W 1,350 feet, more or less, to its point of intersection with a line 500 feet northeasterly of the centerline of Hackett Drive; thence southeasterly and along said line parallel to the centerline of Hackett Drive 1,250 feet, more or less, to a point in the first mentioned line 400 feet northerly of the centerline of Hackett Street, said point being in a boundary of Extension 8 aforesaid; thence westerly and along the line parallel to and 400 feet northerly of the centerline of Hackett Street and along

said Extension 8 950 feet, more or less, to the point of beginning, containing 0.14 square miles, more or less.

The above-described areas being more fully shown on a map entitled "Proposed Water Pollution Control Project, NYSDEC-USEPA Project No. C-36-1096, General Plan" dated November 1979, revised June 1980 and made by J. Kenneth Fraser & Associates, P.C., Consulting Engineers.

Petitions for submission of the resolution to permissive referendum are available from the Town Clerk. Petitions must be submitted to the Town Clerk by August 13, 1980.

MARION T. CAMP  
Town Clerk  
Town of  
Bethlehem,  
New York

Dated: July 14, 1980

## JOHN'S NORMANSIDE

announces  
its merger with

### MELE'S at 11 Delaware Plaza

We now have 10 very talented stylists  
to serve you at this location.

We are the oldest beauty shop  
chain in the U.S.  
operated by the same family.

Hours: Monday - Sat. 8 a.m. - 8 p.m.  
Open Every Evening

439-5621

NEW NUMBERS

439-8518

Enjoy the comfort of a spacious, well-built home  
plus the income received from a lovely two-  
bedroom apartment.



For the Owner —  
Large living room & dining room  
Family room with fireplace  
Modern kitchen  
Three bedrooms

For the Tenant —  
Very large living area  
Kitchenette  
Dining area  
Two bedrooms



We bring people home.

**PICOTTE**  
REAL ESTATE

439-4943  
205 Delaware Ave., Delmar

462-7474  
Loudon Plaza  
Loudonville

489-8551  
1215 Western Ave.  
Albany

465-4747  
120 Washington Ave., Albany

## THE TRI-VILLAGE FRUIT MARKET

65 Delaware Avenue

announces the

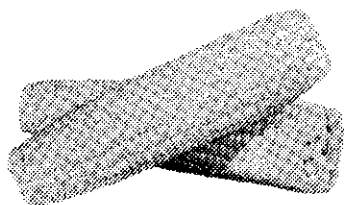
# GRAND OPENING

## of Hay Shaker Farms

507 Albany Shaker Road

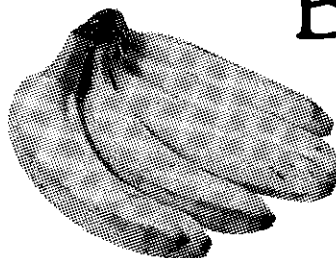
Home-grown

Corn  
10 ears **99¢**



Bananas

**22¢** lb.



These special prices will be in effect at both stores.

# CLASSIFIEDS

Classified Ads are 20¢ per word (\$2.00 minimum) payable in advance before 4 p.m. Friday for publication the following Thursday.  
Submit in person or by mail with check or money order to 414 Kenwood Ave., Delmar 12054

439-4949

439-4949

## ANTIQUES



### ANTIQUES

For Over 35 Years

Bought & Sold

### APPRAISALS

Sterling & Plated  
To Update Your  
Fire & Theft Policy

Jeanne Van Hoesen

439-1021

67 Adams Place, Del., N.Y.

## ANTIQUES

WE BUY WE SELL

### ANTIQUES

Good Used Furniture  
FAIR PRICES PAID

### BILL 'N' LOU'S ANTIQUES

439-2507 • 439-1388

Closed Sunday & Monday



Antiques • Collectibles

Victoria A. Seymour 439-5309

Nancy T. Steele 439-5189

NOW OPEN —

### DELMAR ANTIQUES

449 Delaware Avenue

Buying Sterling, Glass Rings,  
Gold, Jewelry and Coins.

Furniture, rugs, china,  
clocks, wicker, etc.

439-8586 / 482-3892

Wed., Thurs., Fri. 12-5

Sat. and Sun. 10-5

or by appointment

## AUTOMOTIVE FOR SALE

'78 PLYMOUTH VOLARE Sport  
Coupe. V8, autom. trans. Mile-  
age under 10,000. To settle estate.  
439-1954.

1974 JEEP CHEROKEE 4-wheel  
drive, selective hubs. 439-2094.

'71 CHEVY VAN, 64,000 miles,  
recently painted, 6 cyl. \$750.  
439-0359.

'65 OLDSMOBILE F85, PS, PB,  
snows. Runs excellent; reliable.  
First \$250 takes it. 439-9528.

## AUTOMOTIVE REPAIR



AUTO  
COLLISION  
SPECIALISTS  
Quality Workmanship  
Fair Prices

"Make your old car  
like new"

Rt. 9W 462-3977

Glenmont or 439-9177

Open 6 Days

## AUTOMOTIVE FOR SALE

MOTORCYCLE. 1974 Triumph  
Trident 750cc. Very good con-  
dition. \$1,500. 465-9866.

## BLACKTOP

### M. MARIANI

- Jennite Seal Coating
  - Blacktop Driveways
  - Garage Floors
  - Sidewalks
- 489-2780

"Our Prices Are Reasonable"

### LIUZZI BROS.

Blacktop Specialists

Residential, Commercial

Industrial — Fully Insured

458-1033

Also Gilsonite or

Jennite. J-16 Sealer

SATISFIED CUSTOMERS  
ARE OUR BEST  
RECOMMENDATIONS

## BLACKTOP

paving by

C. Macri & Sons

Driveways

Parking Lots

Complete

Tennis Courts

Also Seal Coating

Free Estimates

Call Delmar

439-7801

## CARPENTRY

CABINETS/FORMICA TOPS.

Carpentry and home repairs of  
any kind. Bill Moak, 439-4586.

4T731



JOE LOUX

CARPENTRY-MASONRY

35 Years Quality Service

Small Jobs - Large Jobs

439-1593 439-1593

Anytime

## CARPENTRY

CARPENTER: Kitchens, baths,  
sheetrock, repairs, ceramic,  
decks, etc. 465-9367 eves. 4T717

CARPENTRY of all types, William  
Stannard, 768-2893. TF

## CAR POOL/RIDES

RIDE WANTED: From Delmar to  
Bldg. 12, State Campus. Summer  
only. Will share expenses.  
7:40 a.m. leave, 4 p.m. return. One  
or both ways. 439-0353. 2T724

## CONSTRUCTION

### CLAY R. HENDRICK

General Construction

Residential & Commercial

439-5525

Days

465-6417

Evenings



Remodeling & Contracting

— FULLY INSURED —

Top Quality Workmanship

Call Anytime

for Free Estimate

861-5121

### Charles Quay Jr. Swift Construction

Residential & Commercial  
Construction & Repairs

30 yrs. Exp.

439-1550 after 6:00 p.m.



### BULLDOZING

SPECIALIZING IN  
Grading & Finishing

No Job Too Small

439-7595

EVENINGS

## FIREWOOD

LOG SPLITTER for rent. 439-6642  
TF

SEASONED FIREWOOD, 3 full-  
cord truckloads, cut, split and  
delivered. 16" lengths. \$275. John  
Geurtze, Jr. 872-2078 nights 4T30

SEASONED FIREWOOD. \$60/full  
cord, 4x4x8 delivered. John  
Geurtze, Jr. Eves 872-2078 TF

Lost keys? Call Hilchie's.



### The Albany Collection

297 Hamilton St.  
Robinson Square  
Albany, NY 12210

Buying silver, gold, antiques.  
Premium price for exceptional pieces.  
Discreet, courteous service. Appraisals.

465-5763

Tues.-Sat. 10:30-5:00 P.M.

## ANTIQUE EXCHANGE

Antiques & Collectibles

Bought & Sold

439-7715

154 Delaware Ave.

Behind Denby's



## WANTED

Old & New Tools



Call

Pete Williams

(518)462-6882



439-0002

2100 New Scotland  
Route 85, New Scotland  
ANTIQUES

## FURNITURE

OF YESTERYEAR

Tues.-Sun. 12-4

Sat. 10-4

**FURN. REPAIR/REFIN.****FURNITURE**

Restored • Refinished • Repaired  
Specializing in Antiques  
and Fine Woodworking  
Custom Furniture  
Designed and Built  
Bob Pulfer • 439-6165

**ANTIQUA OR MODERN  
FURNITURE REPAIR SERVICE**

Repairing • Refinishing

**ROBERT ROTUNDO**

154-B Delaware Ave., Elsmere  
Phone 439-7700

**UPHOLSTERY REPAIRS** at home.  
Loose buttons, springs, cushions  
refilled, etc. Call 439-4130 TF

**GARAGE SALE**

**60 CHERRY AVE.**, Saturday &  
Sunday, July 26, 27, 9 a.m.-  
5 p.m. Some antiques, collecti-  
bles, housewares. Featuring **NEW  
HANDMADE VERMONT PINE**  
end tables, coffee tables and  
dry sinks.

**DELMAR, 85 PARKWYN**, 7/26,  
9-3. Cash only. Kitchen set, baby  
items, 17'x15' green carpet, bath  
fixtures.

**182 ADAMS STREET**, July 26,  
9-4, July 27, 11-3. Bikes, tele-  
visions, clothes, household goods,  
toys, cameras, sports equipment,  
hand-made pottery, records, misc.

**GLENMONT FIREMAN'S** Flea  
Market. Free parking and admis-  
sion. Next to K Mart, July 26,  
8-5.

**89 FERNBANK**, Sat. 26th, 9-3.  
Moving. New efficiency oil burner.  
Luggage, electrical, household,  
collectible items.

**51 SUNSET DR.**, Sat., July 26,  
10-3. Toys, youth bedding,  
dresser, dishes, misc.

**GLASS****DAVE'S  
GLASS COMPANY**

glass—aluminum storms  
commercial & residential

**154B Delaware Ave. Delmar**  
(mini-mall behind Denby's  
& OTB)

**439-7142**

**HELP WANTED**

**BABYSITTER** for kindergartener  
during school year. Hamagrael  
Elementary area, your home or  
ours. 439-7832 after 6. 2T724

**HELP WANTED**

**HELP WANTED** — Over 21 apply  
at Andrianos II, 155 Delaware  
Ave. (next to Gloria Stevens).

**BABYSITTER** wanted in Beth-  
lehem teacher's home. Own trans-  
portation. References. Call  
439-5783.

**RELIABLE**, responsible after  
school sitter (occasional even-  
ings) starting late August. My  
home—Hamagrael area. House  
cleaning optional. References.  
439-3286.

**BABYSITTER** for college teach-  
er's baby daughter. Begin late  
Aug. Hours somewhat flexible.  
Preferably my home. 439-0471.

**BABYSITTER WANTED** in my  
home. 3-4 days a week. Start  
immediately. Call 439-7809. 4T87

**HOME IMPROVEMENT****Exterior Remodeling**

Roofing • Repair  
Painting • Siding  
**FREE ESTIMATES**  
**463-4925**

**HOUSE WASHING**

**ATTENTION HOMEOWNERS-  
PAINTERS.** Exterior house wash-  
ing. Alum. siding/clapboard.  
Painting prep. Reasonable.  
439-1715. TF

**INTERIOR DECORATING****DELMAR DECORATORS  
SAVE UP TO 20%**

Slipcovers, Draperies,  
Table Pads, Bedspreads,  
Wood & Cloth Shades

Delmar • 439-4130

**JEWELRY**

**EXPERT WATCH AND JEWELRY  
REPAIRS.** Diamond settings, en-  
graving wedding and engagement  
rings, reasonable. Your trusted  
jeweler, LeWanda, Delaware Plaza  
Shopping Center, 439-9665. tf

**LAWNMOWER SERVICE**

**WILL REPAIR** lawnmowers,  
chainsaws. Pick-up, deliver. Call  
evenings, weekends, 767-9866.  
4T87

**LAWN GARDEN****M & M**

**Tree & Lawn Service**  
Spring Cleanup  
Tree Spraying  
Lawn Mowing

**768-2805**

**TOPSOIL**

**CEDAR HILL TRUCKING**

Cedar Hill, Selkirk

**767-9608 767-2862**

**HORTICULTURE  
UNLIMITED**

- Natural Landscaping
- Fertilization
- Nursery Stock
- Flowers
- Lawn Mowing
- Maintenance
- Guaranteed Planting

"It's Only Natural"

**BRIAN HERRINGTON**

**482-2678**

**LOST & FOUND**

**LOST:** Black/white, long-haired  
male cat, answers to "Charlie",  
vicinity Glenmont Rd., Wiggand  
Dr. If found call 463-5979.

**MASONRY**

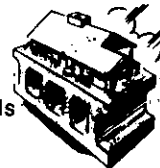
**CHIMNEYS**, patios, sidewalks,  
porches, concrete floors, founda-  
tions. New/repairs. 439-1593. TF

**MASONRY** of all types, William  
Stannard, 768-2893. TF

**MASONRY**

**Jim Loux**  
**NEW•REPAIR**

Chimneys  
Sidewalks  
Patios  
Retaining Walls  
Foundations



**767-9083**

**MASONRY****ALL TYPES MASONRY  
NEW — REPAIRS**

**26 Years Experience**  
Chimneys, Fireplaces, Stoops, Walks,  
Foundation Repairs, Waterproofing  
**PROFESSIONAL WORK WITH INTEGRITY**  
*Serving this community for years  
with Pride—Satisfaction Guaranteed*  
**F. JOSEPH GUIDARA**  
**439-1763, evenings**

**MISC. FOR SALE**

**KIMBALL** Swinger organ. Excel-  
lent condition. 439-5708 after  
5 p.m. 2T731

**COTTON MATERIAL**, pre-cut for  
rug braiding. 2 dress forms (1  
adjustable). 768-2841.

**SNOW TIRES**, two mounted, 1  
regular tire, B 78-13. Very good.  
439-9244.

**VANTAGE GUITAR.** Les Paul  
copy. Used very little. \$200 with  
case. Roadie practice amplifier  
with booster \$100. 439-3544.

**SMALL MAPLE ROCKERS**, beau-  
ties, red crushed velvet covers.  
\$40 ea. 482-2903 eves.

**COMFORTER/DRAPES**, Oleg  
Cassini, like new, white floral,  
only \$30. 482-2903.

**COFFEE TABLE**, brand-new,  
brass, tinted glass, from Italy.  
\$519, sacrifice \$250. 482-2903  
eves.

**TV**, Sylvania 21-inch. Beautiful  
cabinet. Needs work. \$25.  
439-9191 days. 439-5887 eves.

**WORLD BOOK** Encyclopedia-  
1980. Special trade-in savings.  
Call 439-1855 after 5 p.m.

**PASSPORT AND ID** photos. Ready  
in minutes. Call L. Spelich. Phone:  
439-5390 TF

**Bermuda Bags**

No store has a greater  
selection of **Bermuda  
Bags and Covers** than

**CASUAL SET**

of  
**Stuyvesant Plaza**

**MUSIC**

**PIANO LESSONS.** All ages, levels,  
adult beginners. MA degree.  
Sandra Zarr, 767-9728 (Glen-  
mont). 24T1225

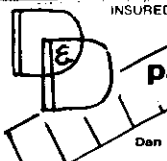
**PAINTING/PAPERHANGING**

**PAINTING**—Exterior, interior.  
Driveways sealed. Experienced,  
insured. Smaller jobs preferred.  
Free estimates. 459-9106. 2T731

**Spotlight Classifieds Work!**

**PAINTING & PAPERHANGING**

**VOGEL**  
PAINTING CONTRACTOR  
Interiors — Exteriors  
PAPERHANGING  
COMMERCIAL SPRAYING  
Free Estimates — Guaranteed  
INSURED 439-7922



**painters**  
Free Estimates  
Dan Dembling 439-9755  
John Dinneen 439-5503

**S & M PAINTING**  
INTERIOR & EXTERIOR  
Wallpapering - Painting  
**FREE ESTIMATES**  
INSURED WORK GUARANTEED  
439-5592, after 5

**D.L. CHASE**  
Painting  
Contractor  
Residential  
Specialists  
Complete maintenance and  
repair services  
768-2069

**Gilday  
Family  
Painters**  
Experienced  
Local References  
INSURED • ESTIMATES  
439-5502

**EXTERIOR HOUSE PAINTING** by  
Dave Bursey. Free estimates,  
439-2445. 2124

**RUSS McCURDY & SON**  
PAINTING CONTRACTOR  
INTERIOR • EXTERIOR  
PAPERHANGING  
FREE ESTIMATES  
INSURED • 439-7124

**PLUMBING & HEATING**

**Home Plumbing  
Repair Work**   
**Bethlehem Area**  
Call JIM for all your  
plumbing problems  
Free Estimates • Reasonable Rates  
439-2108

In Voorheesville, the Spotlight is  
sold at the Grand Union and  
Voorheesville Pharmacy.

**PETS**

**MARJEM  
KENNELS**



**Boarding  
Grooming  
Pet Supplies**

RT. 9W, GLENMONT  
3 miles so. of Albany,  
Thruway Exit 23  
(518) 767-9748  
Carl & Peggy Barkman

**PRINTING**

**PRINTING**—need brochures, pro-  
grams, letterheads, cards? Susan  
Moore and George Bloodgood at the  
Spotlight are ready to handle all  
your printing needs. 439-4949.

**REPAIRS**

**BOB'S  
Equipment  
Repair Co.**

Specializing in  
Repairing/Rebuilding/Tuning  
lawnmowers, garden tractors,  
snowblowers, chain saws,  
& small equipment of all kinds  
ALSO: machine work, welding,  
brazing & any type mechanical  
repairs to almost anything  
Prompt—Reasonable—Guaranteed  
439-7143

**ROOFING & SIDING**

**Dick Domermuth  
and Sons**  
**ALUMINUM  
SIDING & TRIM**  
Our 28th Year  
768-2429

**Can't decide  
who to call  
to do your  
ROOF?**



Why not call the company  
where superior workmanship  
still means something?

**VANGUARD  
ROOFING CO.**

Free Estimates—Fully Insured  
Call JAMES S. STAATS  
767-2712

**ROOFING & SIDING**

**ASPHALT SHINGLE**, slate repairs,  
metal work. Free estimates.  
Vancans Roofing. 439-3541 TF

For a FREE Estimate on



**Cyrus Shelhamer Roofing**

- SNOW SLIDES
- GUTTERS
- TRAILER ROOFS

**INSURED  
REFERENCES  
756-9386**

**SEWING MACHINES**

**GUARANTEED REPAIRS.** All  
makes of sewing machines. Del-  
mar Decorators. 439-4130. TF

**SHARPENING SERVICE**

**SHARPENING:** Lawn, garden tools,  
lawn mowers, saws, chain saws,  
knives, scissors, pinking shears,  
etc. Closed Sundays. 439-5156 or  
439-3893. TF

**SITUATION WANTED**

**SMALL MOTOR REPAIR.** Mow-  
ers, chain saws, bikes, snow-  
blowers, tractors. 439-4078.  
2T731

**F.C. BOOKKEEPER**, office man-  
ager desires situation. Full or  
part-time. Excellent background.  
439-3990.

**SOLAR ENERGY**

**SOLARSENSE  
UNLIMITED**

- Solar energy evaluations
  - Solar domestic hot water
  - Solar space heat
  - Solar greenhouses
  - Attractive and custom  
designed applications
- "Solar turns sense into savings"  
768-2169

**SPECIAL SERVICES**

**Torn Screen?  
Broken Window?  
WE FIX 'EM!**  
**Roger Smith**

PAINT-WALLPAPER  
FLOOR COVERINGS  
340 Delaware Avenue  
439-9385


**SPECIAL SERVICES**

**NORMANSKILL SEPTIC TANK**  
Cleaners. Systems installed, elec-  
tric sewer roter service. 767-9287.  
tf

**DELMAR SANITARY CLEANERS**  
serving Tri-Village Area more than  
20 years. 768-2904. tf

**WINDOW WASHING/PAINTING.**  
Interior/exterior. Paperhanging.  
DeWitt Stannard, 439-7110.  
3T724

**John M. Vadney**  
**UNDERGROUND PLUMBING**  
Septic Tanks Cleaned & Installed  
**SEWERS—WATER SERVICES**  
Drain Fields Installed & Repaired  
—SEWER ROOTER SERVICE—  
All Types Backhoe Work  
439-2645

**TOP HAT 'N' TAILS**  
 **CHIMNEY SWEEP**  
Professionally Cleaned with  
The Patented August West System  
Guaranteed Dust Free  
Bill Forget 482-1621

**JUNK REMOVAL**  
Attic, cellar, garage cleaning  
Light moving services  
• Lowest Rates •  
• Free Estimate •  
Call anytime  
767-9538

**TABLE PADS**

**TABLE PADS**, blinds, window  
shades, made to order. Free esti-  
mates. Call **DELMAR DECORA-  
TORS**. 439-4130. TF

**TRAVEL**

**MYERS TRAVEL**  
Delmar's only airline approved  
travel agent  
210 DELAWARE AVE.  
439-7671  
37 N. PEARL ST.  
434-4131

**TREE SERVICE**

**LOG SPLITTER RENTAL.** \$27.50  
per 8-hr. day. Includes pickup  
and delivery. 861-7234 and  
439-1725. TF

**HERM'S TREE SERVICE**, Call  
IV2-5231. tf



**CONCORD  
TREE  
SERVICE**

Spraying for insect  
& disease control  
• Removal  
• Pruning  
• Cabling

• 24 Hr. Emergency Service  
Free Estimates—Fully Insured  
439-7365  
(Residential • Commercial • Industrial)

## TREE SERVICE

**B & P TREE SERVICE**—Efficient and reasonable tree felling and pruning. Free Estimates 768-2149. TF

**REAGAN'S TREE SERVICE**, removal, trimming, stump removal. Emergency service, insured. 439-5052. tf

**TREE SERVICE**. Insured, low rates. Free estimates. John Geurtze. Eves. 872-2078. TF

## TRUCKING

### FRANK MARKUS TRUCKING

- Topsoil
  - Yellow Sand
  - Crushed Stone
- Orchard St., Delmar



439-2059

## VACUUM CLEANERS

The Finest in  
**NEW & REBUILT  
VACUUMS**



**High Trades on New Vacuums**  
• Eureka • Hoover • Electro  
Hygiene • Filter Queen

Complete Line of Commercial  
Vacuums—Parts, Accessories  
& Service

Vacuum Repairs + Tune-Ups  
Belts—Bags—Motors

**for the Do-it-Yourselfer**  
**LEXINGTON VACUUM  
CLEANER**  
—Specialists—

**TOTAL SERVICE DEALER**

562 Central Ave.  
482-4427

## WANTED TO BUY

**USED** washing machines, dryers, dishwashers, refrigerators, freezers, lawnmowers, garden equip., chain saws, etc. 439-7143. 4T87

**WE BUY JUNK CARS**. Call for price. Joe Messina's Garage, Rte. 9W, Selkirk, 767-9971. 22T1016

**COLLECTOR** seeking old Lionel. Am. Flyer, Ives, Maerklin trains. Call 869-5234. 50T1181

## BUS. OPPORTUNITY

**LADIES-STOP WISHING-START DOING!** Establish your own business with no financial investment. Earn top income selling beautiful fashions. Car necessary. Call 355-6809 or 869-3085. 10T814

## HELP WANTED

### Occasional Help Needed (Tri-Village Area)

sign/poster painters & illustrators  
black & white dark room services



Call  
**ROSS HYMEN**  
N.Y. Farm Bureau  
Rt. 9W - Glenmont  
436-8495

## SITUATION WANTED

**NURSE'S AIDE**. Exper. with elderly. References. Live-in arrangements available. 439-4014. 2T724

## REAL ESTATE FOR RENT

**\$205 APT.**, Slingerlands. 3 rooms, adults, heat, h/w, range, laundry room, refrig., security deposit, no pets, on bus line. 439-9824. 3T731

**3 RM APT.** unfurnished. Glenmont. Kit., BR, LR, frig. and stove. \$175/mo. Reply Dept. "G", c/o Spotlight, Box 152, Delmar, N.Y. 12054. 3T731

**OFFICE SPACE** available in heart of Delmar. Up to 4,000 Sq. Ft. Will subdivide and renovate to suit tenant. Call 439-4432 or 439-9631. TF

**OFFICES OR STORE**, 230 Delaware Ave., Elsmere. Geurtze Builders, 439-5173 or 439-2957. 5T87

**ROOM AVAILABLE** w/ kitchen privileges. Convenient/reasonable. References required. Reply Dept. "P", c/o Spotlight, Box 152, Delmar, N.Y. 12054. TF

**SELKIRK**, 1 bedroom apartment, living room and bath. Heat and electric, no pets. \$275 plus security. 356-2761 after 5 p.m. 2T731

**2-BEDROOM HOUSE**, 1-car garage, Delmar area. Young woman, state worker, 474-0479 weekdays. Ask for Mrs. Ralph. 2T724

## CLASSIFIED AD POLICY

Classified advertisements in the Spotlight must be paid for when submitted. We must enforce this strictly; our rates are too small to permit invoicing and bookkeeping for classifieds. Please do not ask us to make exceptions. Copy and remittance must reach us before 4 p.m. Friday for publication in the following Thursday issue.

## CLASSIFIED ADVERTISING

### RATES

20¢ per word per insertion  
\$2.00 minimum

**Call 439-4949**

or write or stop in

at our convenient office

414 Kenwood Ave., Delmar

Why don't YOU subscribe to  
**THE SPOTLIGHT?**

## WANTED TO RENT

**WANTED:** Small apt. near bus line. Aug. & Sept. Call Mrs. Bauer betw. 9 a.m.-4 p.m. 439-3331. 2T731

**2 BR APT.** for 2 adults w/ child and dog. Immediately. Approx. \$175. 439-1556 or 439-5605.

## Senior citizens move

The town of Bethlehem's Senior Citizens have a new meeting place: the town hall, 445 Delaware Ave., Delmar. The group will meet every Thursday from 12:30 to 3:30 in the building's auditorium. Meetings were formerly held in the Bethlehem Community Center, 125 Adams St.

Senior Citizens who may have difficulty climbing the few stairs at the building's front entry are urged to use the handicapped entrance at the side of the building facing the open field. There is an automatic lift at that entrance and handicapped parking spaces are available there.

**If your Spotlight doesn't come on Thursday, call 439-4949.**

## Blood volunteers needed

Do you have three hours one Sunday a month to assist with blood collections? The Albany Area chapter, American Red Cross, is looking for volunteer RNs or LPNs to register donors, prepare blood packs and man the canteen area on one Sunday a month. Training is provided. For information call 462-7461.

## REAL ESTATE



## DIRECTORY

Local

John J. Healy.....439-7615  
5 Grove St.

Kleisy Realty Inc.....439-7601  
282 Delaware Ave.

Picotte Realty Inc.....439-4943  
205 Delaware Ave.



## Real Estate

By **BETTY LENT**

REALTOR

## HOME-OFFICE DEDUCTION

If you use one room of your home as an office, make sure that you are taking advantage of the tax break that is entitled to you. How much of your home office expenses can be taken as a business expense depends on the size of the room in relation to the rest of the house.

For example, if the house has 1,600 square feet of space and the office measures 10 x 16 feet (or 160 square feet), you are allowed 10% of the total running costs of the house's light, heat, repairs, painting, and other maintenance, depreciation, taxes and so on.

But, remember that the room must be used exclusively for

business use; preferably as a main place of business, or show that the room was necessary to see clients or patients. Also, expenses cannot exceed the income earned from the business.

Also, if you have any valuable equipment in your home office, don't assume that it will be covered by your regular homeowners insurance policy. You'll need a special floater to protect against loss.

\*\*\*

If there is anything we can do to help you in the field of real estate, please phone or drop in at **Century 21 - Betty Lent Real Estate**, 208 Delaware Ave., Delmar. Phone 439-9336.

**WE'RE THE NEIGHBORHOOD PROFESSIONALS FOR YOU.**

## Spotlight Classifieds Work!

### WRITE YOUR OWN!

Minimum \$2.00 for 10 words, 20 cents each additional word. Phone number counts as one word.

**DEADLINE 4 P.M. EACH FRIDAY**

- |  |   |
|--|---|
| <input type="checkbox"/> MISC. FOR SALE    | <input type="checkbox"/> REAL ESTATE FOR SALE |
| <input type="checkbox"/> HELP WANTED       | <input type="checkbox"/> REAL ESTATE FOR RENT |
| <input type="checkbox"/> SITUATIONS WANTED | <input type="checkbox"/> _____                |


I enclose \$ \_\_\_\_\_ for \_\_\_\_\_ words

Name \_\_\_\_\_

Address \_\_\_\_\_

Phone \_\_\_\_\_

### DAR ceremony held

The Gansevoort Chapter of the DAR, which includes 18 Delmar residents, celebrated Independence Day on July 1 at Camp Pinnacle in the Helderbergs. A flag ceremony showing the ritual for proper disposal by fire of worn flags highlighted the day of swimming, hiking and games. Tami and Spencer Myers of Selkirk, grandchildren of Mrs. James Stratton of Delmar, assisted in the ceremony.

### Plan October tour

Bethlehem Tri Village Chapter No. 1598 of the American Assn. of Retired Persons (AARP) is planning a four-day Pennsylvania Dutch tour Oct. 13-16. The guided tour will include Amish farmlands, Strasburg Railroad, Hershey and the farmers' market in Ephrata. Reservations will close Aug. 1. For information, call Arline McChesney, 439-1926, tour director.

## Vox Pop

*Vox Pop is open to all readers for letters in good taste on matters of public interest. Letters longer than 300 words are subject to abridgement by the editor, and must be signed. Names will be withheld on request.*

### Town pool hours

Editor, The Spotlight:

This letter pertains to the running of the Bethlehem town park. The swimming season is still young and already there have been two incidents which cause me concern.

The park has announced its weekday hours begin at 11. Twice this season the water in the kiddy area has not been turned on until noon. The guards give the reason that the maintenance crew is back-washing the filters. This work, I agree, needs to be done—however, not at the expense of the fun of the small children

## Landmark Properties



### BETHLEHEM COLONIAL

First time offered! A Century old well cared for Center Entrance Colonial, surrounded by meticulously groomed grounds. Enjoy breakfast in the tea room or spend a quiet afternoon in the library. Use the caretakers quarters as a retreat for teenagers, or Hobby Studio. Spacious 50' x 80' barn with 4 horse stalls, has great potential uses for the imaginative buyer. Approximately 160 acres of woods and tilled farm lands, with more than a dozen outbuildings. . . . . \$225,000

For further information on this property call Dolores Stornelli at our Landmark Properties Department 456-4475.

**The Market Place for the Unusual  
In Residential Real Estate**

## NEW LISTINGS

### DELMAR

Backing up to the Dowerskill and a forever green area, three stories high in the rear but only one in the front, this custom built home by one of the area's premier builders, boasts over 2,500 sq. ft. of joyful family living space. 3 baths, 2 fireplaces and 4 or 5 bedrooms and in a prime location. Elegantly landscaped! Call Frank Downs at 439-9906.

### DELMAR

Custom contemporary 4-bedroom, 2-baths home on one acre, with natural cedar and stone deck and patio overlooking fenced, private, tree-surrounded yard. Additional full kitchen in lower level off family room — perfect for entertaining or separate quarters. Call Bob Edwards at 439-9906.



**Roberts  
Real Estate**

190 Delaware Ave., Delmar

439-9906

of Bethlehem. If this task requires additional time, the work should be started at an earlier hour than at present.

I plan activities for my young children around naps, and resent having my children denied water play for a good part of the time they are at the town park. If your opening time is posted, the entire facility should be ready for use at that specified time.

*Mrs. Laurie Ostroff*  
Selkirk

zens who are continuing the legacy of Miss Keller.

We are deeply indebted to the Capital District business, civic and religious community for their support of this benefit in recognition of NABA's unparalleled work. Most importantly, citizens of all ages who are blind, visually impaired or multiply handicapped should continue to be recognized for their achievements, and for their triumphs over blindness and multiple impairment.

*John S. Minor*  
*Associate Executive Director*  
*N.A.B.A., Inc.*  
Albany

**Lost keys? Call Hilchie's.**

**Dick  
Gallagher**



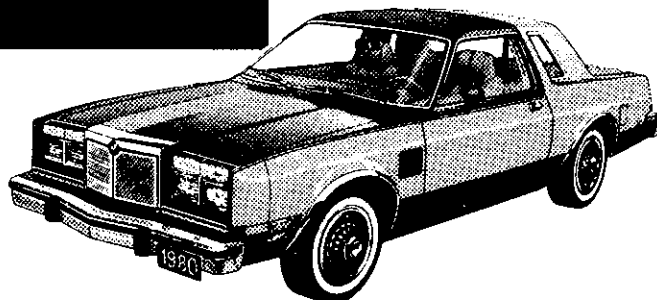
**Energy Saving Improvements**  
Insulation • Fans • Vents  
Remodeling • Kitchens • Baths  
Painting • Wallpaper • Insured  
**765-4644 evenings**

### Benefit for blind

Editor, The Spotlight:

The Northeastern Association of the Blind, Inc. held a very successful fourth annual benefit dinner dance June 27 (100th anniversary of the birth of Helen Keller). It capped a week-long designation of Blind Citizens Recognition Week and was highlighted by awards presented to eight blind individuals and three unique organizations of blind citi-

## NEIGHBORHOOD RENTALS AT Rent-a-Car NEIGHBORHOOD RATES



**A PLAN AND RATE TO FIT YOUR NEEDS  
ANY KIND OF CAR YOU WANT**

*as low as \$8.00 per day  
plus low mileage charge*

**MARSHALL'S GARAGE**  
**Rt. 9W, Ravena, N.Y.**  
**756-6161**

**WE HONOR MOST MAJOR CREDIT CARDS**

## Community Corner

### Tips for Householders

The Crime Prevention Van, a touring walk-through exhibit demonstrating many ways homeowners can prevent burglaries and vandalism, will spend the weekend at the Glenmont firemen's fair. We hope many of you take a few moments to visit it.

The mobile display, sponsored by the State Division of Criminal Justice Services and brought here by the Bethlehem police crime prevention unit, will be at the fire house on Glenmont Rd. Friday from 6 to 11 p.m. and Saturday from 8 a.m. to 11 p.m.

And . . . speaking of firemen's fairs . . . enjoy family fun at Glenmont and New Salem (Punkintown) these next two weekends!

*Community Corner, a public service column of important community events, is sponsored by*



**City & County Savings Bank**  
Member FDIC

163 Delaware Avenue, Delmar (opposite Delaware Shopping Plaza) • 439-9941



## 'Let's start a growing friendship'

25 years combined professional experience in complete landscape design & construction.



- COMPLETE PLANTING
- BRICK/BLUESTONE PATIOS - WALKS
- TREATED WOOD DECKS
- REVITALIZATION EXISTING LANDSCAPES
- NEW LAWNS
- EXISTING LAWN RENOVATION
- SELECTIVE PRUNING - SHEARING
- TOPSOIL, GRADING, BULLDOZING
- INSECT & DISEASE CONTROL

*Distinctive, Innovative, Professional*




**J. WIGGAND & SONS**  
Landscape Designers & Contractors  
(518) 434-8550  
GLENMONT ROAD  
GLENMONT, NEW YORK 12077

Design / Planning / Contractors  
Nurserymen • Interior Landscapes • Consultants

Larry Bartkus

Mike Doherty



**VACUUM, MOP,  
WAX, DUST...**  
**THESE ARE A  
FEW OF OUR  
FAVORITE  
THINGS.**  
**THE MAIDS**  
A Unique Cleaning Program  
Designed To Maintain Your Home  
**489-8591**

**APPLIANCE SERVICE**  
**WASHERS — DRYERS — RANGES**  
**REFRIGERATORS — FREEZERS**

*(We also buy used appliances)*

**Tri-Village Service 439-9582**

# Be Summer Beautiful!



Picture yourself on the beach...wearing that special bathing suit. You can look fantastic if you start now by taking off those "winter" pounds and bulges.

Our famous MED method can be the key to a more shapely you!

**Summertime = Shapely Time**

**Gloria Stevens Shapely Summer Special**

**\$10.00**

**Toward introductory offer of  
6 weeks of unlimited visits for \$25**

Valid for new members only at participating salons.

Offer has been  
Extended for a  
Limited Time  
Only!

**Gloria Stevens®**  
**FIGURE SALONS**

2 Convenient Locations:

**155 Delaware Ave., Elsmere**

Opposite Delaware Plaza

**Open Mon. thru Fri. 9 to 9**

**Sat. 9 to 3 439-8104**

**355 Ontario St., Albany**

Corner Park & Ontario

**Open Mon. thru Fri. 9 to 9**

**Sat 9 to 3 482-8692**

