

The Spotlight

April 9, 1981
Vol. XXVII, No. 15

25¢

Graphic newsweekly serving the towns of Bethlehem, New Scotland and nearby communities

BETHLEHEM
PUBLIC LIBRARY

Why service stations are closing

Page 22

BETHLEHEM

School board settles on budget, asbestos

Pages 16 & 18



Horse and buggy days

Page 13

Spotlight CALENDAR

Assemblyman Larry Lane's district office, 1 Becker Terr., Delmar, open Mondays and Wednesdays 10-3.

Town of New Scotland Town Board meets first Wednesday at 8 p.m., Planning Board second and fourth Tuesdays at 7 p.m., Recreation Commission third Tuesday at 7 p.m. Board of Appeals meets when necessary, usually Fridays at 7 p.m. Town Hall, Rt. 85.

The Spotlight

(USPS 396 630)

Publisher

Richard A. Ahlstrom

Editor

Thomas S. McPheeters

Senior Editor

Nathaniel A. Boynton

Office Manager

Arline M. Holder

Secretary

Mary A. Ahlstrom

Subscriptions

Kara Gordon

Contributing Photographers

Cheryl Marks, R.H. Davis,
J.W. Campbell

Sales Representatives

Susan E. Moore,
Jerry Gordon, James Sullivan,
Mary Powers, Judy Arbour

Production

Brian Cahill, Manager
Bernard King, Ann Brink
Caroline Terenzini
Pamela Mosher

Newsgraphics Printing

Gary Van Der Linden
George A. Bloodgood, Jr.

The Spotlight is published each Thursday by Newsgraphics of Delmar, Inc. 414 Kenwood Ave., Delmar, NY 12054. Second class postage paid at Delmar, NY. News and ad copy deadline: 4 p.m. Friday for following issue.

Subscription rates: Albany County one year \$7.50, two years \$13.50; elsewhere, one year \$9.00. Send address changes to The Spotlight, P.O. Box 152, Delmar, NY 12054.

MEMBER NEW YORK PRESS ASSN.

Phone 439-4949

Van Dyke's

APPLIANCES

WE'VE MOVED!

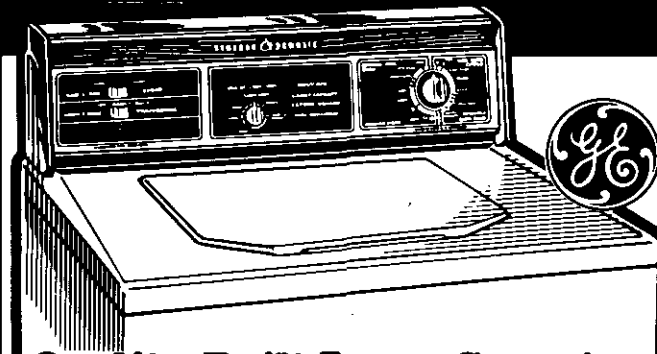
And here's your chance to save money on all in-stock merchandise. Our inventory is in our way as we remodel for our Grand Opening...

So we're giving money off on all washers, dryers, ranges, refrigerators, microwaves and TV's!



COME IN NOW
AND TAKE
ADVANTAGE
OF THESE
SAVINGS!

SAVE!



Quality-Built Large Capacity Washer with Energy-Saving Mini-Wash® System

For small or delicate loads, the Mini-Basket™ tub uses 25% less hot water than the big tub's low water setting. Set water level to match load size. 5 wash/rinse temperature combinations with energy-saving cold water setting.

Regular Price	\$410 ⁰⁰
Less our Discount	-40 ⁹⁵
You pay us	369 ⁹⁵
Less GE Rebate*	-20 ⁰⁰

*\$20 cash direct from General Electric when you purchase this GE model WWA834OV thru April 30, 1981

**Your Final
COST**

\$349⁹⁵

222 Delaware
Avenue,
Delmar

Van Dyke's

APPLIANCES 439-6203

Mon.-Thurs. 10-7
Fri. & Sat. 10-5

BFGoodrich

Our Best, Long Wearing Steel Belted Radial

Lifesaver XLM® Whitewall

\$52⁰⁰

P185/80R-13



BFGoodrich Lifesaver XLM®

Size	Our Price	F.E.T.
P205/80R-13	\$59.00	218
P175/75R-14	55.00	193
P185/75R-14	59.00	209
P195/75R-14	63.00	232
P205/75R-14	66.00	243
P215/75R-14	67.00	258
P225/75R-14	69.00	256
P205/75R-15	70.00	271
P215/75R-15	73.00	292
P225/75R-15	77.00	314
P235/75R-15	79.00	323

- Lower rolling resistance than non-radials for fuel economy
- Two steel belts and polyester cord body for extra strength
- Wide tread for outstanding handling and traction

Belted for strength & toughness! BELTED T/A 70

\$53⁰⁰

P215/70B-14



- Deep aggressive tread for excellent traction - wet or dry
- Two fiberglass belts for strength and handling
- Stylish raised white letters for high performance look

BFGoodrich Belted T/A[®] 70

Size	Our Price	F.E.T.
P225/70B-14	\$57.00	247
P235/70B-14	59.00	257
P225/70B-15	60.00	262
P235/70B-15	66.00	277

Strength! Stability! Great Savings! Belted CLM™ A great value at an affordable price!

\$31⁰⁰

P155/80B-13



BFGoodrich Belted CLM™

Size	Our Price	F.E.T.
P165/80B-13	\$36.00	160
P175/80B-13	37.00	169
P185/75B-14	41.00	188
P195/75B-14	42.00	207
P205/75B-14	43.00	219
P215/75B-14	45.00	230
P225/75B-14	47.00	252
P205/75B-15	45.00	226
P215/75B-15	47.00	246
P225/75B-15	49.00	263
P235/75B-15	51.00	284

- Fiberglass cord belts give strength and stability
- Good traction; smooth, quiet ride
- Modern whitewall styling

C&S Tire Sales
232 N. Allen St.
Albany, N.Y. 482-9445

Joe Keller's Mobil
Rt. 9W & Rt. 32
Glenmont, N.Y. 463-7712

Pat & Bob's Mobil
317 Delaware Ave.
Delmar, N.Y. 439-9832

Bailey's Garage
23 Oakwood Rd.
Elsmere, N.Y. 439-1446

Bethlehem Youth Employment Service, Mon.-Fri., 1:00-4:30 p.m. 439-2238.

Welcome Wagon, newcomers or mothers of infants, call 785-9640 for a Welcome Wagon visit. Mon.-Sat., 8:30 a.m. - 6 p.m.

League of Women Voters meets monthly at Bethlehem Library. 9:15 a.m. Babysitting available. Information, 439-5786.

Five Rivers Environmental Educational Center, grounds open daylight hours seven days a week; interpretive building open Mon.-Sat. 9:00-4:30 p.m. Information 457-6092.

THURSDAY, APRIL 9

Movie, "Charlotte's Web," Voorheesville Public Library, 4 p.m.

Anniversary Dinner, Kiwanis Club of New Scotland, speaker, John H. Clyne, honoring past presidents, New Scotland Presbyterian Church, 6:30 p.m. Former members welcome.

Bethlehem Historical Assn., "Hudson Valley Boyhood," illustrated talk by William E. Tinney, Schoolhouse Museum, Rt. 144 and Clapper Rd., Cedar Hill, 8 p.m. Refreshments. Public invited.

Bethlehem Library Trustees, board meeting, Bethlehem Library, 7:45 p.m.

New Scotland Kiwanis Club, Thursdays, New Scotland Presbyterian Church, Rt. 85, 7 p.m.

Bethlehem Senior Citizens meet every Thursday at the Bethlehem Town Hall, 445 Delaware Ave., Delmar, 12:30 p.m.

FRIDAY, APRIL 10

QUILT (Quilters United in Learning Together), speaker, Joyce Schlotzhauer, quilter of national renown, Bethlehem town hall auditorium, 10 a.m. to 2 p.m. All welcome.

Bethlehem Tennis Assn., annual meeting and election of officers, Key Bank Community Room, Delmar, 8 p.m. All welcome.

Bicycle Registration, Slingerlands School, 11:45 a.m.-1:20 p.m.

Evening of Star Gazing, with Albany Area Amateur Astronomers group, Five Rivers Center, Game Farm Rd., Delmar, 7:30 p.m. Indoor program substituted if rain or overcast skies. 457-6092.

Career and Education Counseling, Bethlehem Library, 6-8 p.m. by appointment, 439-9314.

SATURDAY, APRIL 11

Tack Exchange Horse Exposition, sponsored by Albany County 4-H Clubs and Cooperative Extension, County Resources Center, Martin Rd., Voorheesville, 11 a.m. to 4 p.m.

Gilded Walk, "Signs of Spring," Five Rivers Center, Delmar, 2 p.m. 457-6092.

area arts

A capsule listing of cultural events easily accessible to Bethlehem-New Scotland residents, provided as a community service by the General Electric Co. plastics plant, Selkirk. Phone numbers are for information and tickets.

THEATER

"A Midsummer Night's Dream" (Empire State Youth Theater), The Egg, Empire State Plaza, Albany, **April 6-10**, 10 a.m.; **April 8 and 10**, 7:30 p.m. Box office 473-3750.

Six short plays (Junior College of Albany student productions): Terrence McNally's "Next" and Tennessee Williams' "I Can't Imagine Tomorrow," **April 9**, 11:30 a.m.-1:30 p.m.; Edward Peple's "The Girl" and William Butler Yeats' "At the Hawk's Well," **April 14**, 11:30 a.m.-1:30 p.m.; John Guare's "The Loveliest Afternoon of the Year" and A.F. Groff's "Not My Cup of Tea," **April 16**, 11:30 a.m.-1:30 p.m.

MUSIC

"Bernstein on Broadway" (Albany Symphony Orchestra with EBA Contemporary Dance Theater), Palace Theater, Albany, **April 11**, 8:30 p.m.

Dave Brubeck Quartet, Troy Savings Bank Music Hall, **April 11**, 8 p.m.

Michael Campbell (pianist performs contemporary, classical and classic jazz), St. Joseph's Hall, College of Saint Rose, 985 Madison Ave., Albany, **April 11**, 8 p.m.

"Nick, Skip & The Doc" (Nick Brignola, Skip Parson's Riverboat Jazz Band and Doc Scanlon's Rhythm Boys), The Egg, Empire State Plaza, Albany, **April 12**, 8 p.m.

Hudson Valley Philharmonic (Beethoven, Handel and Copland), The Egg, Empire State Plaza, Albany, **April 12** 2 p.m.

"King David" (Honegger's work performed by Union College Women's Glee Club and Cornell University Glee Club with Betty Allen narrator), Union College Memorial Chapel, Schenectady, **April 12**, 7:30 p.m.

ART

Posters and Art of the 20s and 30s (Art Deco posters, fashion and stage designs), Posters Plus Galleries, 295 Hamilton St., Albany, **through April 22**.

Third Annual Photography Regional, Rensselaer County Council for the Arts, 189 Second St., Troy, **through April 25**. Hours Tuesday through Saturday, 9 a.m.-5 p.m., Sunday 2-5 p.m.

Senior Show, College of Saint Rose Art Department, Picotte Hall, 324 State St., Albany, **through April 24**, open Sundays through Fridays 12:30-4:30 p.m.

The Corning Family: Paintings and Objects, Albany Institute of History and Art, 125 Washington Ave., Albany, **through April 19** (Tuesdays through Saturdays 10 a.m.-4:45 p.m., Sundays 2-5 p.m.)

"The Manipulated Landscape II" (photographs), Plaza Gallery, State University Plaza, Broadway and State streets, Albany **through April 16**, 8 a.m.-6 p.m. weekdays.

Special On CHANNEL 17

- **Bill Moyers: "Alternatives to Disaster"**
Friday, 9 p.m.
- **"All Creatures Great and Small"**
Saturday, 8 p.m.
- **Masterpiece Theater: "Therese Raquin"**
Sunday, 9 p.m.
- **Paddington Bear**
Monday, 6 p.m.
- **Simulcast: Leonard Bernstein conducts "Resurrection"**
Monday, 9 p.m.
- **Hall of Fame: "Dear Liar"**
Wednesday, 8 p.m.

Owens-Corning Fiberglas supports public television for a better community.

Owens-Corning is Fiberglas

OWENS CORNING
FIBERGLAS

GENERAL  ELECTRIC

SELKIRK, NEW YORK 12158

An Equal Opportunity Employer

Preschool Films, Bethlehem Library, 10:30 a.m. and 1 p.m.

Garage Sale, Albany Panhellenic Assn., home of Barbara Tate, 20 Longwood Dr., Delmar, 9 a.m. to 3 p.m. Benefit scholarship fund, contributed articles sought, call 439-1327 between 5-7 p.m. for pickup arrangements.

Craft Fair, North Bethlehem Fire Dept., Schoolhouse Rd., 9 a.m. to 5 p.m.

Battle of the Books, St. Thomas School vs. Bethlehem Middle School, Bethlehem Library, 1 p.m.

Annual Spring Supper, Woman's Guild of New Salem Reformed Church, roast beef family style at 5, 6 and 7 p.m. settings, hand-made items on sale. Reservations, 765-2197.

Bicycle Registration, K-Mart, Town Squire Shopping Center, 10-11:30 a.m.; Selkirk Fire Co. No. 1, noon-1:30 p.m.; Selkirk Fire Co. No. 3, 2-3:15 p.m.

SUNDAY, APRIL 12

Pancake Breakfast, Bethlehem Lions Club annual benefit for sight and hearing projects,

Blanchard Post, American Legion, Poplar Dr., Elsmere, 8 a.m. to 1 p.m.

MONDAY, APRIL 13

Bethlehem Community Orchestra, Bethlehem town hall, 7:30 p.m.

TUESDAY, APRIL 14

Elementary School PTA Program on child achievement, speaker, Dr. Louise Bates Ames, president, Gesell Institute of Child Development, Bethlehem Central High School auditorium, 8 p.m. Public invited.

Budget Hearing, Voorheesville village board, Voorheesville village hall, 8 p.m.

Film, "Meet John Doe," Gary Cooper, Barbara Stanwyck, 2 p.m.

Delmar Progress Club, literature group, Elizabeth Stout reviewer, at home of Midge Baldwin, 1:30 p.m.

WEDNESDAY, APRIL 15

Glenmont Homemakers, Glenmont Reformed Church, 8 p.m.

FOUR CORNERS



Delmar Bootery

- Total Shoe Repair
- Shoe Supplies
- Orthopedic work

"OLD SHOES MADE LIKE NEW"

Open Tues.-Fri. 10:00 to 5:30, Sat. 10:00 to 5:00

— Closed Mondays —

Serving Delmar 42 years

439-1717



Le Shoppe
expert hair design

439-6644

397 KENWOOD AVE.

FOUR CORNERS, DELMAR



DELMAR FLORIST

**Palm Sunday
Open House 12-3**

STOP IN AND SEE OUR EASTER PLANTS,
FLOWERS, AND ARRANGEMENTS

Mon.-Thurs. open til 5:00
Fri. & Sat. open til 8:30



WE DELIVER

439-7726

All 14K Gold Earrings

20% off

**New supply of picture frames
Jewelry • Cards • Gifts • Engraving**

**Harry L. Broton Jewelers
and Thistle Gift Shop**

363 Delaware Ave.

439-2718

Spring is here! and

Ship'n Shore leads the way...

Over 800 blouses to choose from in beautiful
spring colors.

LONGSLEEVE - SHORTSLEEVE - SLEEVELESS

Sleepwear by KATZ

Beautiful polycotton dusters with embroidered
twin collar, snap or button front, long or short.

S-M-L

Size 38-46

from \$8.98

Polycotton Summer Gowns

Colorful gowns in long or waltz length

Size 38-46 S-M-L

Dresses by LOVE

Pretty Easter dresses for girls

Size 2-6 and 7-14

Mr. Thomas

For the little tots, this line is still number 1!

DELMAR DEP'T. STORE
at the Four Corners



439-3770



Mark Twain, The Literary Artist, Bethlehem Library, 2 p.m.

Delmar Progress Club, Antique Study Group, Dr. Joseph Marcelli speaking on silver, Bethlehem Library, 1 p.m.

Bethlehem Board of Education, business meeting and budget review, Clarksville Elementary School, 8 p.m.

Embroiderer's Guild of America, Capital District Chapter, with guest Brigita Fuhrmann, Delmar Methodist Church, 10 a.m.-2 p.m.

Free Income Tax Assistance for senior citizens and shut-ins, sponsored by Bethlehem Tri-Village Chapter, American Association of Retired Persons, Community Room, Key Bank, 343 Delaware Ave., Delmar, 9 a.m.-4 p.m.

Public Hearings, Bethlehem Board of Appeals: estate of Aiton C. Rowe, Jr. to divide property at Borthwick and Kenwood aves. into two parcels, 8 p.m.; application of James Blendell, 1 Grove St., Delmar, to erect six-foot fence in rear yard of residence, 8:30 p.m.; application of W. Scott Prothero, 6 Lincoln Ave., Delmar, to erect six-foot fence at side yard of residence, 8:45 p.m. Bethlehem Town Hall.

THURSDAY, APRIL 16

Food Stamp Outreach, Bethlehem town hall, 9:15 a.m. to noon.

Evening Walk in search of the elusive woodcock, Five Rivers Environmental Education Center, Game Farm Rd. in Delmar, 6:15 p.m.

KAREN'S KORNER

417 Kenwood Ave., Delmar
Behind Sporthaven Lanes

Now Accepting Spring & Summer Items

Hours: Tues. thru Sat. 10:00 to 5:00

NEXT-TO-NEW SHOP

CLOTHING • BOOTS • SKATES

For more information 439-5050

OPEN HOUSE Palm Sunday

1 to 5

Free Flower for the Ladies

See our beautiful selection of
Easter Plants, Arrangements
and Fresh Flowers.

The Children can visit with
our Easter Bunny!



Town Squire Shopping Center
Glenmont

Delivery
436-7979



Mon-Sat. 9:30-6
Fri. till 9



The Crystal Chandelier

THIS WEEK'S SPECIAL

Beautiful pastel pink Rosaline Crystal
Dishes & Stemware from France

Stemware - goblets, wine or flute this week 6 for \$8⁷⁵, Reg. \$10⁹⁵
16-Piece starter set - plates, cups, saucers this week \$14⁹⁵ Reg. \$18⁵⁰

Lamps — Shades — Gifts — Accessories for the home
278 DELAWARE AVE., DELMAR • 439-4643

Lay-aways always available

'Let's start a growing friendship'

26 years combined professional
experience in complete landscape
design and construction

Distinctive, Innovative, Professional

- Complete Planting
- Treated wood decks
- Existing lawn renovation
- Topsoil, grading, bulldozing
- Brick Bluestone patios - walks
- New lawns
- Selective pruning - shearing
- Insect and disease control
- Revitalization existing landscapes

J. WIGGAND & SONS

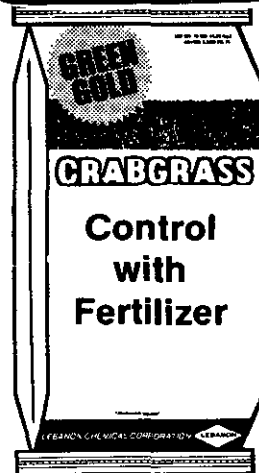
Landscape Designers and Contractors

(518) 434-8550

Glenmont Rd., Glenmont, NY 12077

Design / Planting / Contractors

- Nurserymen
 - Interior Plantscapes
 - Consultants
- Larry Bartkus Mike Doherty



Green Gold Crab Grass Control with Fertilizer

Stop Crabgrass before it starts
and fertilize your 5,000 sq. ft.
Regular \$14.95

SALE **\$13.95**

Scott Turf Builder

15,000 sq. ft.

\$24.95 on sale

—OPEN PALM SUNDAY—
EASTER PLANTS

\$1 OFF any Easter Plant
with this ad Sat. & Sun. only

PRICE-GREENLEAF

Seed — Garden Store — Nursery

14 Booth Rd., Delmar

next to A&P • 439-9212

HOURS:

Mon. thru Fri. 8:30 to 6, Sat. to 5, Sun. 10-4

FRIDAY, APRIL 17

Clam Chowder Luncheon and sale, Bethlehem Grange. Orders taken, 763-0693, 767-2770.

Recovery, Inc., self-help for former mental patients and those with chronic nervous symptoms, First United Methodist Church, 428 Kenwood Ave., Delmar, weekly at 12:30 p.m.

SATURDAY, APRIL 18

Bethlehem Recreational Baseball League registration for players

(16 or older), park office, Elm Avenue Park, Delmar, 10 a.m. "The Magical Feats of Maxwell Treat," Jim Snack does 1900's magic, Bethlehem Public Library, 1 p.m.

MONDAY, APRIL 20

Fantasy and Magical Tales for elementary school-age children, Bethlehem Public Library, 2-2:45 p.m.

Single Parent Support Group, Bethlehem Public Library, 7:30-9 p.m.

Selkirk Fire District Commissioners meet, Selkirk Fire Co. No. 1, Maple Ave., 7:30 p.m.

Bethlehem Memorial Auxiliary Post #3185, VFW, Post Rooms, 404 Delaware Ave., Delmar.

Temple Chapter 5 RAM, first and third Mondays, Delmar Masonic Temple.

Bethlehem Women's Republican Club, third Monday at Bethlehem Library, except June, July, August and December, 7:30 p.m.

TUESDAY, APRIL 21

Bethlehem Planning Board, town hall, 7:30 p.m.

American Legion Auxiliary, Nathaniel Adams Blanchard Post 1040, regular business meeting at the post, 8 p.m.

American Association of Retired Persons, Bethlehem Tri-Village Chapter, monthly meeting with talk on crime and prevention, First United Methodist Church, 1:30 p.m. following 12:30 p.m. social hour.

Chez René

FRENCH RESTAURANT

463-5130

Serving Dinner 5 to 10 p.m. Closed Sun. and Mon.

— GIFT CERTIFICATES AVAILABLE —

Rt. 9W, Glenmont, 3 miles south of Thruway Exit 23

LOW RENTAL RATES

ANY KIND OF CAR YOU WANT



WE HONOR MOST MAJOR CREDIT CARDS



Renta-Car

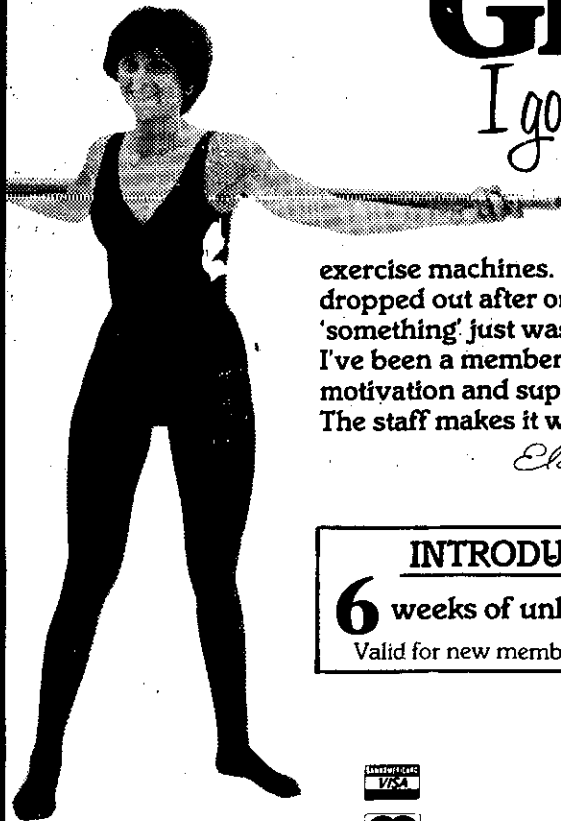
As Low as \$13 per day

MARSHALL'S GARAGE INC.

Rt. 9W RAVENA 756-6161

Gloria Stevens:

I go because people make the difference!



"Once I tried a health club that relied only on exercise machines. I joined for 6 months and dropped out after only 3 weeks. The extra 'something' just wasn't there. For the last 5 years I've been a member of Gloria Stevens. The motivation and support is what really counts. The staff makes it work for me."

Elaine A. Slack

ANNUAL MEMBER

INTRODUCTORY OFFER

6 weeks of unlimited visits for \$25

Valid for new members only at participating salons

Gloria Stevens® FIGURE SALONS

Where the Best Program gets the Best Results!

NOW! 2 convenient locations.

CALL 439-8104 155 DELAWARE AVE. ELSMERE

CALL 482-8691 355 ONTARIO ST. ALBANY

(Opposite Delaware Plaza)

Over 155 salons throughout the U.S. and Canada



Mon.-Fri. 9 to 9 • Sat. 9 to 3

Blood Pressure Clinic, Bethlehem Town Hall, 10 a.m.-2 p.m. and 7-8:30 p.m.

Vacation Movies for Children, "Houdini Never Died" and "The Ransom of Red Chief," Voorheesville Public Library, 2 p.m.

Book Discussion Group, Eudora Welty's short stories, Bethlehem Public Library, 7:30 p.m.

AARP, third Tuesday, First United Methodist Church, Kenwood Ave., Delmar, 12:30 p.m.

Legion Auxiliary, Nathaniel Adams Blanchard Post #1031, Poplar Dr., Elsmere, third Tuesday, 8 p.m.

Bethlehem Lodge 1096 F&AM, first and third Tuesdays, Delmar Masonic Temple.

WEDNESDAY, APRIL 22

Public Hearings, Bethlehem Town Board, three local laws: issuance of appearance tickets in connection with violations of local ordinances, 7:30 p.m.; repair or demolition of unsafe buildings, 7:45 p.m.; local fee for dog licenses 1982, 8 p.m., Town Hall.
Slingerlands Fire Co. Auxiliary, fourth Wednesday, Slingerlands fire hall, 8 p.m.

THURSDAY, APRIL 23

Small Business Workshop, local businessmen discuss ideas and experiences, Bethlehem Public Library, 7-9 p.m.

Film, "Son of Blob," for young adults, Bethlehem Public Library, 7:30-9 p.m.

Newsgraphics

--- HAVE YOU HEARD?
that Newsgraphics

has complete Composition
& Printing Facilities

- Phototypesetting
- Design and Layout
- Offset Camera
- Advertising
- Original Illustration
- Offset Printing



Newsgraphics

of Delmar, Inc.

(Publisher of The Spotlight)

414 Kenwood Avenue
Delmar, NY 12054

439-4949

439-0360

NOW OPEN RAILROAD JUNCTION Ice Cream Parlor



Soft and Hard
Ice Cream
OPEN 7 DAYS
12-10

14 Flavors
Shakes
Ice Cream Sodas
Sundaes

An "Old Fashioned
Ice Cream Parlor"

100% Naturally Flavored
Hard Ice Cream

1 South Main Street, Voorheesville, NY

NO WAITING
LIST.

TAKE A LOOK

Wellspring House — luxury retirement lifestyle
providing an alternative to the high cost of living.

Comfortable Apartments
and So Much More

- 24 hour security
- 3 excellent meals a day
- Private transportation
- Maid service
- Independence • Privacy
- Immediate Occupancy:
2 Bedroom, Deluxe Studios, Suites.

*A lifestyle for you or
someone close to you
Come — visit us!*

Wellspring

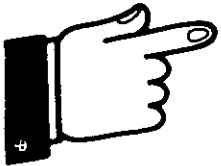
HOUSE of ALBANY

Located in a beautiful country setting

Washington Avenue Extension, Albany, New York 12203
(between Fuller Rd. & Rt. 155)

869-0211

WE'VE GOT IT ALL TOGETHER!



CANDY— by Russell Stover and Fanny Farmer — complete selection . . . always fresh

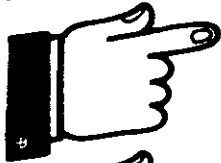
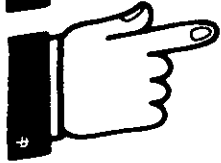
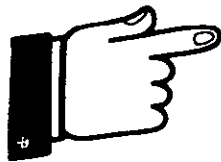


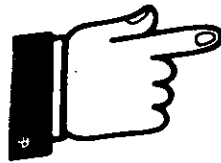
PHOTO PROCESSING — by Duracolor — prompt processing on Kodak paper . . . we'll call you when they're back



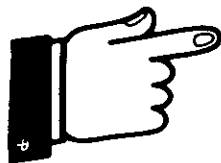
PARTY DEPARTMENT — large selection of all you need . . . cups, plates, spoons, novelties . . . even matching ones



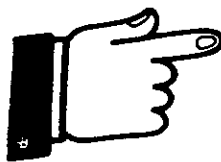
WRITING PAPER — by Hallmark, Eaton and Crane . . . we can imprint your name or initials



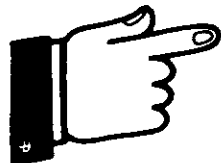
GIFTS — plush animals, Lefton China, picture frames by Carr



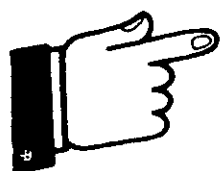
SCHOOL & OFFICE SUPPLIES — large departments, varied selections



BOOKS — categorized department of paperbacks . . . excellent selection . . . bestsellers, non-fiction, how-to, etc.



WEDDING INVITATIONS — many books, and our personal assistance



SERVICES— gift wrapping, prompt and free . . .
Open Sunday 11-4 . . . we'll happily special-order for you friendly people



THE PAPER MILL

DELAWARE PLAZA

439-8123



The Spotlight

Graphic newsweekly serving the towns of Bethlehem and New Scotland, Albany County, N.Y. • (518) 439-4949

BUSINESS

Service stations: an endangered species?

A growing squeeze applied by major oil companies is making it increasingly hard for local gasoline dealers to stay in business.

Bethlehem has lost three Mobil dealers within the past year and a half, a well-known Exxon dealer is selling his business, and the casualty list is expected to grow in the years ahead.

Local dealers predict that soon motorists will be unable to get any kind of service on weekends, and will have to make appointments in advance to get even a minor repair.

The squeeze on dealers comes from two sources—the independent self-serve stations selling unbranded gasoline, and the “big oil” companies loading heavy costs on their own dealers.

“If this trend continues, the independents will push out the legitimate dealers,” complained one local operator. Said another: “They (major companies) want the dealers out so they can sell the gas themselves direct.”

The trend leaves the motoring public as the biggest loser. “If the dealers quit, where will you get a fanbelt or a piece of hose replaced?” asks Dave Ingraham of Clarksville, one of the few station operators who own their properties instead of leasing. “If you’re on the road or in another town on a weekend, you’re stuck ‘til Monday morning, period.”

The surviving dealers in Bethlehem and New Scotland have no way to compete in pump prices with indepen-

dents like Gasland, BP and Petrol. Says Pat Capparella, co-proprietor of Pat and Bob’s Mobil in the heart of Delmar whose station is across the street from the independent Sousa pumps: “I can’t buy my gas for what he’s (Sousa) selling it for. We are three cents below the market (Mobil regular), and it comes right out of our pocket.”

Ken Parker, longtime proprietor of Cherry Ave. Exxon, Delmar, lives with the same kind of situation, but not very well and not for long. Parker has cut his self-serve price on regular to three cents above cost, and still is an amazing seven cents above the Gulf station across the street. He says he has sold his business and will be leaving

on May 15.

“Until three or four weeks ago, Gulf kept their prices up to the market,” says Parker. “Then they cut it. They operate the station and bypass the dealer, hire kids for minimum wage and give no service. I can’t compete.”

The saddest part of the story is that tankwagon (bulk delivery) prices to the dealers vary by less than a cent and a half a gallon among the major distributors—Mobil, Exxon, Gulf, Sunoco, etc. While people like Capparella and Glenmont’s Joe Keller have to make their living on gasoline volume, along with automotive service and repair, the company-operated Gulf station does not.

In Slingerlands, where

hundreds of families have depended on the neighborhood Mobil dealer at the Toll Gate intersection for work on the lift as well as road calls on sub-zero mornings, Wally Throop has tossed in the sponge.

“They (Mobil) jacked up the rent so high you can’t make ends meet, and now they want a piece of the money you’re making in the bays,” he said.

Attempts to reach local Mobil representatives for a response were unsuccessful Monday.

Throop, who blamed the independent self-serve stations for a drop in his pumping volume from 34,000 to 17,000 gallons a month, scoffed at the state Energy



The Baltimore Evening Sun

COUPON COUPON COUPON COUPON COUPON



Throop
ELECTRIC SUPPLY

27 Washington St., Rensselaer, NY
Phone: 462-5496

OPEN: Mon.-Fri. 8 to 5, Sat. 8 to 12

Fantastic Savings with This Coupon!

**WESTINGHOUSE
LIGHT BULBS**

25, 40, 60, 75 and 100 WATT
Regular 2 Pack Price \$1.04

Sale 60¢ PACK OF TWO

**FEDERAL PACIFIC ELECTRIC
BASEBOARD HEAT**

2'-10' UNITS **60% OFF** MFG. LIST

ROMEX 250' COIL

14-2 WG — \$16.75

12-2 WG — \$25.75

**DUPLEX
RECEPTACLES**

15 AMP REG. 90¢ **55¢ each**

15 AMP SWITCHES

REG. 95¢ **60¢ each**

**ALL
LIGHT FIXTURES
50% to 70% Off** Mfg. List

NuTone PRODUCTS

40% OFF Mfg. List

Range Hoods—Attic, Paddle, Bath and Kitchen Fans—Portable Heaters—Garage Door Openers

COUPON COUPON COUPON COUPON COUPON

Office allowing dealers a profit of 17.6 cents a gallon. "Mobil bases its rent on this, even though they know you couldn't sell a pint at that price," he says.

So Throop set the price a nickel above the tankwagon cost and watched the cars go by, heading for Gasland or Hess.

"What really hurt us," says Keller, who will observe his 24th anniversary in Glenmont next week, "is the big spread in tankwagon prices versus the independents. I'm making 1.3 cents a gallon, selling at near cost, just to stay in the market."

Keller and Capparella have recently negotiated new three-year leases with Mobil, but neither would say if the higher formulas would force them out when the contracts expire in 1982. Throop, meanwhile, was bitter about a Latham dealer of 35 years whose rent, he says, was doubled as soon as the contract expired.

In Clarksville, Ingraham

doesn't have to worry about rent because he owns his station. He agrees the oil companies are "out to force the dealers out," but figures it wouldn't do any good to switch from Mobil to another distributor.

"They're all the same," he says. "The only way (to save the situation) is for the public to put up a protest. Then maybe the oil companies will listen."

The specific line the dealers want this public protest to take is support of federal legislation on retail divestiture (divorcement) and anti-competitive pricing, which they say will restore a competitive atmosphere which would benefit the consumer.

Many members of the Gasoline Retailers Association of Northeastern New York are passing out fliers to their customers explaining the bills and warning that without them \$2 per gallon gas is right around the corner.

Nat Boynton

\$1.00 Off Greens Fee
with this ad



**TALL TIMBER
Country Club**

Hilton Road, Slingerlands, N.Y.
439-9991

NOW OPEN 7 DAYS A WEEK
Open to public play (semi-private)

**ACCEPTING GOLF MEMBERSHIPS
and SWIM MEMBERSHIPS**

**Private Golf Lessons Available
by appointment**
Bill McNab — Professional

BANQUET FACILITIES
seating up to 150

Weddings—Golf Outings—Special Parties
Ellie Wilson, Manager

with this ad

\$1.00 Off Greens Fee

This week's pump prices

Gasoline prices on Delaware Ave. dropped at two stations last week. Prices as of Monday morning:

	Regular 3/30	Regular 4/6	Regular 4/6
Clarksville Mobil*	\$1.37.0	\$1.37.0	\$1.48.0
Gulf	1.32.9	1.32.9	1.38.9
Exxon	1.40.0	1.40.0	1.46.0
Getty*	1.36.9	1.36.9	1.41.9
Delmar Mobil.....	1.38.9	1.38.9	1.47.9
BP	1.31.9	1.31.9	1.37.9
Stop-N-Go	1.36.9	1.34.9	1.41.9
Cumberland Farms	1.31.8	1.31.8	1.35.9
Sunoco*.....	1.41.9	1.38.9	1.43.8
Hess	1.31.9	1.31.9	1.38.9
Citgo*	1.36.0	1.36.0	1.45.8
*Full Service			

GOP club officers

Charles Fritts, president of the Bethlehem Men's Republican Club, has announced the club's directors and officers for 1981. Those serving as directors for three-year terms are Fritts, Paul Wagner, Ken Lezette, Scott Prothero and Walter Hotaling, Jr., Brian Murphy, Stephen Rice, Dixon Welt, William Clarke, and

Thomas Scherer will serve two-year terms; and John Lyons, Joseph Messina, Dan Santola, David Siegal and Jed Tanzer will serve for one year.

In addition to Fritts as president, the new officers are Stephen Rice and David Siegal (vice-presidents) Brian Murphy (secretary) and Paul Wagner (treasurer).

Needleworkers meet

The monthly meeting of the New York Capital District Chapter Embroiderers' Guild of America will feature Brigita Fuhrmann. She will present a slide show and lecture on needlelace April 15, at the Delmar Methodist church, followed by a day-and-a-half workshop for those who have pre-registered. Meeting time is 10 a.m. to 2 p.m.

League hosts meeting

Carol Buillivant of Delmar, in her capacity as president of the Albany County League of Women Voters, welcomed nearly 300 state-wide members attending a two day legislative conference in Albany last month. Other Delmar residents attending included Jan Whitaker, Barbara Bartoletti, Libby Schapiro, Ann Brandon and Bailey Bloom.

The league's primary legislative goal this year is passage of a State "bottle bill" requiring a return deposit on all beverage containers.

Christian musical coming

The "King's Kids," a group of 38 area children, will be presenting the new musical, "Come Messiah, Come" on Friday, April 10 at 8 p.m. at the Bethlehem Community Church, 201 Elm Ave., Delmar. The presentation of Christian Music Ministries of Feura Bush, features singers who range in age from 6 to 13. The program is open to the public, and will be "signed" for the deaf.

On the cover:

Harold Mead and his horse and buggy are a familiar sight around Voorheesville. Mead, retired after 40 years of teaching in the Voorheesville schools, uses his rig to run errands from his home outside village several times a day, often dropping by the school as well. Mead is looking forward to many more years of travel in his 1901 buggy. "I'm going to get it restored eventually," he says. *Spotlight*

The Maids™



You Work Hard...
You Deserve Help.

489-8591

Landscape Plans

Our PERSONALIZED LANDSCAPE PLANS will reflect your own personal lifestyle, add equity to your home, and save you time and money over and over again. A

beautiful landscape can be designed for low maintenance, too!



Come in today or call and let one of our designers start a plan of landscape development for your home. Through professional landscaping you will enhance your surroundings and invest in your future.



J. P. JONAS, INC.

Landscape Designers & Contractors
Feura Bush Road, Glenmont
(a Garden Shoppe affiliate)

439-4632 • 439-4820

FREE \$1000* VALUE

**ALL 1981 HONDA Accord
LX 2 Door Hatchback's**

**IN STOCK OR IN TRANSIT,
WHILE THEY LAST, WILL BE
SOLD WITH UP TO \$1000**

***FREE ACCESSORIES STARTING
SAT. 4/4/81 THRU SAT. 4/11/81.**

**ALL LX PRICES WILL BE BASED
ON STICKER PRICE PLUS FREIGHT
PLUS LISTED PRICES OF ACCESSORIES
AVAILABLE**

DELMAR AUTO PLAZA LTD.

266 DELAWARE AVE.

DELMAR, N.Y. 12054

439-8151

HONDA MOTOR CARS EXCLUSIVELY

FREE \$1000 VALUE

FREE \$1000 VALUE

FREE \$1000 VALUE

**Police puzzled by
body in woods**

Like any good mystery, there are plenty of clues. But at this point Bethlehem Detective John Cox would prefer one good lead on the identity of the badly decomposed body found last Friday in the woods off Van Dyke Rd.

So far, he said Monday, the clues don't add up. "There's probably a logical explanation, but at this point I just can't put it together."

The clues include Jan. 1 issues of *The Spotlight* and the *Ravena News-Herald* found near the body, a piece of paper with 10 local phone numbers, a bus ticket, some new and fairly expensive clothes and evidence that the

**Bethlehem Cable
Channel 16**

(all times p.m.)

Monday, April 13

- 6:30—Story Time,
Bethlehem Library
- 7:00—Capital District Living
- 7:30—Sports Focus
- 8:00—Video 80, Bob Hebler
- 8:30—Fantasy & War
Games
- 9:00—Travels, Elmer Ephner

Tuesday, April 14

- 6:30—Search for Truth
- 7:30—9 Alive
- 8:00—Gospel Showcase
- 8:30—All God's Children
- 9:00—Northeast Country
Western Show

Wednesday, April 15

- 6:30—Panorama
- 7:00—El Salvadore
- 7:30—Three Miracles of
Easter
- 8:00—16 Magazine
- 8:30—The Dreamers:
Steve Van Zandt
- 9:00—Christopher Closeup

*This feature contributed
as a public service by*

**Newsgraphics
of Delmar, Inc.**

414 Kenwood Ave., Delmar
439-4949

man had a stomach problem. The body was found by Frank Vadney about three quarters of a mile from his Van Dyke Rd. residence, near a small dump. It had been so badly decomposed and eaten by animals that no identification is possible from either finger prints or the face. In fact, Cox tends to discount the Jan. 1 date on the two newspapers because "it just doesn't seem possible that the body could have decomposed that rapidly."

The body's condition leads only to some general conclusions: a white male, about six feet tall and weighing between 200 and 230 pounds. He was fully clothed, and the slacks and moccasins were expensive brands (the belt and moccasins still had price tags on them). The bus ticket appears to have a November date and a New York City destination.

An autopsy could produce no cause of death; it did show that the man had a lot of Malox in his stomach, Cox said.

The real puzzler, though, is the phone numbers. They include several local residents, a store and a halfway house in Albany.

None say they know of the man, even casually.

"I must have gotten 40 calls today," Cox sighed. The next step is more calls. The state police are forwarding to Bethlehem a computer list of all missing persons in upstate New York, Vermont and Massachusetts, and Cox will be looking for possible connections there.


Driver loses radio

A bus driver for the Bethlehem Central school system told Bethlehem police he left a \$200 radio in his bus over the weekend; when he returned Monday morning it was gone.

DELAWARE THEATRE
290 Del. Alb. 449-3503

WINNER OF TWO ACADEMY AWARDS

Fame

United Artists 
ALL SEATS \$1.50
7:00 & 9:30
SAT. & SUN. MAT.

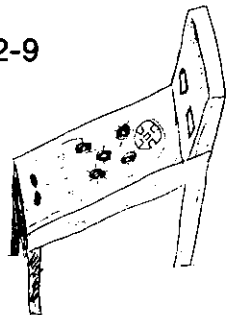
25¢

25¢

ESCAPE

FAMILY AMUSEMENT CENTER

Mon.-Thur.: 2-9
Fri.: 2-11
Sat.: 10-11
Sun.: 10-8



Win A Pinball Game!

Adult Supervision
At All Times

New Machines Added Frequently

**BRING IN THIS AD
FOR ONE FREE GAME**

1 per day — per person

25¢

25¢

REGISTER NOW

for Art Programs at
Albany Institute of History & Arts

Harmanus Bleecker Center

19 Dove St., Albany, NY

Classes for Children and Adults

BEGIN APRIL 20

Portraits in Pastel and Charcoal • Pottery • Etching
Life Drawing • Oil Painting • Watercolor • Stained Glass
Drawing • Matting and Framing • Calligraphy
Photography • Sculpture for kids
Weaving for youngsters • Cartooning for kids

CALL 462-4261

Board finishes budget; 4.9 percent tax hike

Some pleasant surprises from the state were like a tonic to a tired Bethlehem Central School Board last Wednesday as it wrapped up 1981-82 budget deliberations.

The bottom line on the district budget for next year (if approved by voters May 13) is \$14,197,494. This figure will mean an estimated tax rate increase of 4.9 percent to Bethlehem property owners, or \$6.58 per \$1,000 of assessed valuation.

In New Scotland, the increase will be 15.3 percent because of a drop forecast in the town's equalization rate. This figures out to an estimated tax rate increase of \$28.25 per \$1,000 in New Scotland.

One surprise from the state was the report that audited figures showed the district was eligible for an unexpected \$81,000 more in state aid this year. These same figures indicate Bethlehem can expect \$34,000 more in 1981-82 than had been previously projected by local administrators.

The second surprise was word from "competent sources" at the state level that Bethlehem can expect at least \$96,000 more under the basic state aid formula than it had projected.

The windfall gave board members an opportunity to look again at some projected expenditures.

Faced with several cost

options, depending on the amount of work to be done, and hindered by lack of agreement on how much of a hazard exists, the board voted to allocate \$85,000 in the '81-'82 budget for covering up asbestos-containing materials in the schools. (Story Page 18).

Bertold Weinberg then moved that the board eliminate driver education as part of the regular academic offering. Robert Zick seconded the motion.

In the spirited discussion that followed, Robert Ruslander said, "If you were to ask the students if they want it, they'd want it, and I'd go with the students."

Marjory O'Brien said she

sees driver education as a "safety education program." Weinberg retorted: "If you're talking about safety, children shouldn't drive at all until age 18!"

When the motion failed, Zick moved that the district add to its driver education staff so that the program could accommodate all the students who want to take it. This motion also failed.

Weinberg then suggested that some of the "windfall" be added to the operations and maintenance section of the budget for window replacement work that, in earlier budget debate, had been stricken. The board finally settled (in a 4-3 vote) on a figure of \$70,000 for this work.

The board also approved a resolution indicating its intent


HATE TO COOK?
TOO BUSY?
CALL

Personal Dining Service
439-2642

Luncheons—Dinners—Hors d'oeuvres
DINNER FOR TWO

BURT ANTHONY ASSOCIATES


FOR INSURANCE



Burt Anthony

You don't expect your spring flowers to grow without "tender loving care"—Your policies need T.L.C. too!

Call 439-9958 for that special care.



208 Delaware Ave.
Delmar

NOW OPEN SUNDAYS

3 FARMS DAIRY STORE

ROUTE 144 767-2252

Now Selling Fresh Cut Prime Meat, Full Line of Cold Cuts & Deli Items

MEATS

Nature Fed Veal Available This Week

PORK

OUR OWN ITALIAN SAUSAGE
\$1.54 LB.
No Preservatives Added

MIXES PORK CHOPS
\$1.64 LB.

COUNTRY STYLE SLAB BACON
\$1.44 LB.

ROLLED PORK ROAST
\$1.64 LB.

SPECIAL ITEMS DAIRY PRODUCTS

1 Lb. 3 Farms Cottage Cheese 75¢

1 Gallon Homogenized Milk \$1.71

½ Gallon 3 Farms Ice Cream \$1.49

1 Pound 3 Farms Tub Butter \$1.55

1 Qt. Farm Fresh Churned Buttermilk 56¢

½ Gal. Tropicana Pure Orange Juice \$1.51

BULK COUNTRY SAUSAGE

\$1.32 LB.
No Preservatives Added

CUBE STEAKS

\$1.89 LB.

FRESH BEEF BUYS

LONDON BROIL

\$2.29 LB.

SIRLOIN ROAST

\$2.35 LB.

BONELESS CHUCK ROAST
\$2.29 LB.

SIRLOIN STEAK **\$2.89 LB.**

BONELESS **\$2.99 LB.**

DELI ITEMS

AMERICAN CHEESE LAND o' LAKES
\$1.89 LB.

5 LB. Loaf **\$1.79 LB.**

POTATO & MACARONI SALADS
59¢ LB.

N.Y.S. CHEDDAR CHEESE (SHARP OR MILD)
\$2.15 LB.
(OUR PRICES SUBJECT TO CHANGE)

Special

COOKED HAM **\$1.99 LB.**

COOKED ROAST BEEF
\$3.45 LB.

• ALL WHITE TURKEY BREAST
\$2.59 LB.

BOLOGNA
\$1.67 LB.

HAMBURGER PATTIES 5 LB. BOX
\$1.89 LB.

N.Y. STRIP STEAK
\$3.55 LB.

EYE OF THE ROUND
\$2.25 LB.

TOP ROUND ROAST
\$2.53 LB.

COOKED SALAMI
\$1.49 LB.

to sell the old Bethlehem Center elementary school building, where a preschool is now the tenant. But it fretted over the time schedule.

Roger Fritts, attorney for the district, said it takes time to prepare "an attractive bid package." Zick expressed concern that the preschool may seek other quarters if there is uncertainty about who will own the building, and when.

Business Administrator Franz Zwicklbauer alerted the board that budget cuts under consideration in Washington would eliminate school lunch subsidies and food subsidies. If these cuts take place, he said, district children would have to pay well over \$1 for a school lunch.

Caroline Terenzini

A second candidate for board seat

Lois I. Dorman, a Slingerlands mother of three and former teacher, has announced that she plans to run for the Bethlehem Central School Board.

Mrs. Dorman said she will seek the seat being vacated by Bertold Weinberg, who has decided not to seek reelection. Jed Wolkenbreit, a Delmar lawyer, has already filed his petition for the seat.

Two other seats are up in the May 13 election, but so far only the incumbents have filed. The deadline is Monday.

Mrs. Dorman, a Bethlehem resident for 10 years, said in a prepared statement that she is "concerned about the limited

and diminishing financial resources available to educate our children in the Town of Bethlehem."

She urged calling on other segments of the community, such as business, professional, the creative arts "to enrich and add to the educational experiences of our children."

"We are educating our children for the 21st Century and while we must prepare them to deal with a futuristic society, we must not lose sight of the need to instill within them a sense of humanity, a sense of humor and a sense of

caring for and about others."

Mrs. Dorman is a graduate of Westfield Senior High School, Westfield, N.J., and has a B.S. in education from Temple University. She taught in the Troy school system in 1968 and 1969, and did substitute teaching in Albany and Bethlehem from 1972 to 1974.

She has been president of the Slingerlands Elementary School PTA since 1979, and is chairman of the children's theater primary age group. She has served on the K-12 arts curriculum study for the school district.

Public Announcement

to Residents of
Feura Bush
Clarksville
Westerlo
Berne
Rensselaerville

Once a Day Free Delivery Service
to Residents of This Area
Now Available

from the
In Addition to Tri-Village Area
from the

Plaza Pharmacy

Delaware Plaza

Drugs, Prescriptions, Cosmetics
Sick Room Supplies
Russell Stover, Whitman's
and Barton Candies
Hudson Vitamins.

Phone 439-4451 439-4511

**It's not a
Good Deal —
If it's not a
Good Car!**



**Rabbit Diesel—
Fuel Economy
Champ
4th Year in a Row!**

**BMW
The Ultimate Driving Machine!**

Signature Edition Used Cars

Feature a Full Year — 12,000 mile Warranty!

A Good Selection of used VW, BMW,
and other makes — foreign and domestic.

Capital Cities

Imported Cars

Home of the 3 year — 100,000 mile
VW and BMW

Rt. 9W

463-3141

Glenmont

BETHLEHEM

Board compromises on asbestos work

A reported determination from Albany County Health Cner Dr. John Lyons that "there is no public health hazard at this time" apparently helped the Bethlehem Central school board come to agreement on what to do about asbestos-containing material in District schools.

Asbestos has been identified as a potent carcinogen.

Though divided over how

much of a hazard exists and how much to spend, the board allocated \$85,000 in the 1981-82 budget to cover asbestos-containing surfaces that have been damaged or are vulnerable to damage.

District Superintendent Lawrence Zinn told the board last Wednesday that County Sanitarian Edward Podgorski had visited several schools March 30 to survey areas that an architect had identified as possible problem areas.

Zinn had Lyons' letter in hand April 1.

The previous week architect Benjamin Mendel,

Jr. had given board members a \$250,000 proposal for covering up areas found to contain 5 to 11 percent asbestos. Mendel stressed that the asbestos was contained in "hard, cementitious" material.

The five district schools identified as containing asbestos are the high school, middle school, Clarksville, Hamagrael and Glenmont.

The board's response to Mendel's proposal, though not unanimous, was to ask for more information.

At last Wednesday's session, James Cole, speaking

as a parent, told the board he was "alarmed at the asbestos situation." He stressed that "children and teachers don't have a choice—they have to be in the schools. It is incumbent on the board to do something about it."

Laurence Farbstein of Elsmere asked the board to consider a bond issue, if necessary, to raise funds to eliminate any hazard from asbestos. "Promises about no more bond issues," he said, "must be weighed against a clear medical need."

Jed Wolkenbreit, a candidate for the board,

Convenient Food Market

FREE BAG OF ICE

With Purchase of Any Case of Beer

Expires April 15, 1981
(Slingerlands Store Only)

**834 Kenwood Ave.
Slingerlands**

THERE'S STILL TIME

to take advantage of our fabulous woven wood shade sale. Call us for FREE shop-at-home service and **SAVE 30% to 50%**. We have a full line of natural and stained woods, many woven in colors to match your decor. CALL US NOW.

DELMAR DECORATORS

DELMAR

439-4130

UNIQUELY WEEKLY

Subscribe to

The Spotlight

for professional news coverage
of Delmar, Slingerlands, Voorheesville, Glenmont
and nearby communities.

\$7.50 a year—\$13.50 two years

(within Albany County—elsewhere \$9.00 a year)

THE SPOTLIGHT, 414 Kenwood Ave., Delmar, NY 12054

Please enter my renewal subscription to The Spotlight

I enclose \$7.50 for one year \$13.50 for two years
 \$9.00 outside Albany County

NAME _____

STREET _____

P.O. _____ ZIP _____



RUGGED,
ALL STEEL
CONSTRUCTION
FOR
RELIABILITY

Features

1. Up front mower
2. Maneuverability - dual hydrostatic transmission system — true zero degree steering — "effortless steering" - minimizes operator fatigue.
3. Maximum productivity - steering and up front mower combination ensures fastest job cycle time. Sure to eliminate much of your present walk-behind mower cost.
4. Excellent stability on hillsides.
5. Excellent unobstructed view of mower deck.
6. Choice of 12 HP & 16 HP air cooled engines.
7. Choice of 44", 52" & 61" mower decks.
8. Low maintenance - all major components easily accessible for service. Simple components, common sense design.
9. Low purchase price - priced about the same as ordinary brand name garden tractors.

Abele Tractor and
Equipment Co., Inc.
Sales • Service
Rentals



72 Everett Rd.
Albany, N.Y. 12205
438-4444

urged "more sensitivity...to the asbestos (problem)."

But in the ensuing debate, board member John Clyne took the position that "if we do it, we're doing it gratuitously. There is no mandate from the state."

State law requires that schools "must inspect and must have a plan for containing, encapsulating or removing hazardous asbestos materials," but does not require that it be done. A later state Education Dept. document says "corrective action by (a) board of education is in order."

Such work on Bethlehem school buildings is eligible for 28.2 percent reimbursement from the state the following year.

Board member Bertold Weinberg said, "We have a

responsibility not to run off in every direction every time someone speaks up. If we reacted to every potential health hazard, we'd bankrupt ourselves."

Clyne took a similar view: "Just because we got a windfall doesn't mean we have to spend it. There's some taxpayers out there—let's think of them."

After the unanimous vote to earmark \$85,000 for the work, Sheila Fuller moved to increase the allocation to \$165,000 so more could be done, but only board President Bernard Harvith and Marjory O'Brien went along, and the motion failed.

Search for woodcock

An evening walk at Five Rivers Environmental Educa-

tion Center Thursday, April 16, at 6:15 p.m. will be centered on a search for the elusive woodcock.

The woodcock, an odd-looking American game bird, has an unusual flight song this time of year. In preparation for mating, he performs an elaborate courtship ritual which can be witnessed in early evening.

Church supper coming

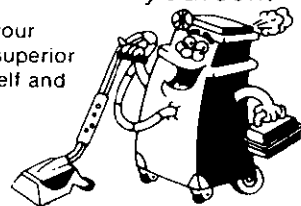
The Womens Guild of the New Salem Reformed Church will hold its annual spring supper Saturday, April 11. Roast beef family style will be served at 5, 6 and 7 p.m. settings. Handmade items and baked goods will also be sold. For reservations, call Nellie Sheehan at 765-2197.

FAST, PROFESSIONAL RESULTS... You can do it yourself.

Rug Doctor makes it easy to clean your house, auto, RV or upholstery with superior machine and chemicals. Do it yourself and see the results!

Rent today at:

Roger Smith's
Decorative Products Co.
340 Delaware Ave., Delmar, NY
439-9385



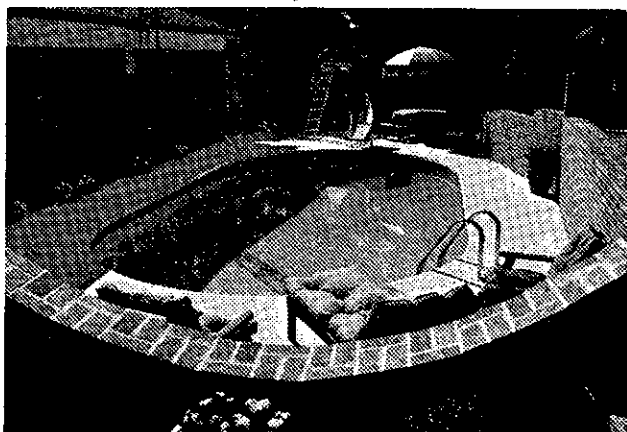
Rug Doctor

Don't want to deal with a big impersonal pool company? TALK TO US!

We've been in business for over 30 years—and we build the Fox Brand Swimming Pool. Our patented X Brace construction assures you of a beautiful pool that will last a lifetime.

And we build pools in many shapes and sizes—Rectangles, Kidneys, Ovals, Lazy "L"s, Pears and Romans too! One is sure to be your key to day after day of relaxing, healthful family togetherness.

Call for our free literature today. No obligation—no salesman will call without your invitation.



Catskill Valley Pool and Chemical Co.
Flats Road
Athens, N.Y. 12015
(518) 945-1190

Pools - Hot Tubs - Spas - Water Softeners and Conditioners

SUNDAY SUPPER SPECIALS

5 p.m. to 9 p.m.

- PANCAKES — Regular, with soft butter, syrup, ham, bacon or sausage \$3.15
- FARMSTYLE PANCAKES — The same as above with the addition of 2 fried eggs \$3.75
- BLUEBERRY PANCAKES — with soft butter, warm blueberry syrup loaded with whole luscious blueberries, ham, bacon or sausage \$3.65
- CORNED BEEF HASH — w/2 fried eggs & toast \$3.15
- THE FAMOUS 5 STAR SPECIAL \$3.15
 - * Eggs - fried or scrambled
 - * Ham, bacon or sausage
 - * Home fried potatoes
 - * Toast with jelly
 - * Coffee (known as the best in town)

BRING THE WHOLE FAMILY!

(Children's portions, too)

EASTER HOURS: Open 7 a.m. - 2 p.m.

Tools
RESTAURANT
Home-style cooking at
attractive family prices.

283 Delaware Ave.
Delmar

7 a.m. - 9 p.m. every day
439-9111

Can area farmers strike it rich?

"If they strike oil on my land, how soon can I retire?"

The nearly 200 farmers who attended a meeting last week on oil and gas leasing in Albany and Greene counties were after answers, and the one to that question posed near the end of the meeting was the easiest.

The answer is that any land owner fortunate enough to have a working well is likely to do very well. Stan Kiersznowski, senior petroleum engineer for the state Department of Environmental Conservation, explained that the leasing companies now active are looking for deep deposits of oil or gas; if they bring a well in, it would have to

produce something on the order of \$3,000 worth of gas or oil per day (at current prices) just to justify the cost of production and piping it out.

One eighth of that sum would go to the land owner, but could be split among other adjoining properties according to the size of the pool being drained.

The catch, said Kiersznowski, is that there is no guarantee that a well will be drilled even if the prospects of a strike are good.

"You need a fairly solid block of acreage before you can drill in wildcat country," he said. "They're just starting here, really."

Representatives of the two leasing firms, Ohio Oil and Gas and Bowman Development Co., were appropriately

tight-lipped about their operations. Bowman is operating only in Greene County, and Ohio in both southern Albany County and Greene County, but neither firm offered figures on their activity so far.

After the meeting, Joseph Sabatino, project manager for Ohio Oil and Gas, said his firm is not an agent for any drilling company, as it was in Washington and Rensselaer counties.

"That doesn't mean a whole lot," commented Ted Stork, counsel for the New York State Farm Bureau, after the meeting. "At this point, people in Albany and Greene counties, if they sign a lease with Ohio, really don't know who will be drilling. Which is not necessarily a liability."

Stork said he understands

that most of Ohio's activity has been in the hill towns, with some reports of leasing in New Scotland. Most of the farmers attending the meeting at the Resource Development Center in Voorheesville were from Albany County, he said.

Sabatino said his firm is not attempting to obtain leases in Bethlehem "at this time."

Award for Bump

Gardiner Bump of Elsmere has been presented with the Albany County Conservation Alliance's Lanzetta conservationist award for his work with the Capital District Ruffed Grouse chapter in setting up the Corning Forest and Wildlife Demonstration Area near Alcove.

In Clarksville, the *Spotlight* is sold at Clarksville Supermart.

STAR-LITE LOUNGE

Route 9W, Selkirk

767-9905

Parties of 8 or more, reservations requested.

— SPECIALS —

Thursday, April 9

VEAL and PEPPERS\$6.25

Friday, April 10

TWIN LOBSTER TAILS \$13.25
FRIED SHRIMP\$6.50

Saturday, April 11

Dining Room Reserved

CLOSED SUNDAY, April 12

Monday, April 13

SOUTHERN FRIED CHICKEN\$5.00

Tuesday, April 14

DEEP FRIED CLAMS\$5.25

Wednesday, April 15

VEAL CUTLET PARMIGIAN\$6.50

All above dinners served with soup, antipasto, potato and vegetable, rolls and butter, dessert, coffee and wine.

Dinner served daily 4:30 to 10 p.m., Sandwiches til ?

Reservations Now Being Accepted
for Palm Sunday and Easter Sunday

PIZZA NOW BEING SERVED IN OUR LOUNGE!!!

THINKING OF HAVING A BANQUET? CHECK OUR PRICES.

— Accommodations for 175 people —



DELMAR REFORMED CHURCH

(at Four Corners)
386 Delaware Ave.

10:00 a.m. Sunday Worship and Church School
Nursery and Crib Care

Robert A. Hess

Joyce B. deVelder

Ministers

Ample Parking

Worship with us

439-9929

VADNEY'S FEED, COAL & HARDWARE COMPANY

- Coal
- Farm Supplies
- Garden Seeds
- Fertilizer
- Feed
- Hardware
- Straw

RT. 32 FEURA BUSH

439-3239

New ag district may be proposed

Farm land owners along Krumkill Rd. and Blessing Rd. have shown "definite interest" in forming an Agricultural District, and owners along Font Grove Rd. may also be interested.

According to Howard Zimmer of the Albany County Soil and Water Conservation District, between 2,000 and 3,000 acres of land could be included in the new district, which would provide farmers protection from development costs such as sewer and water lines and the possibility of a sharp tax increase under full value assessment.

The land, much of it in New Scotland and some in Bethlehem, is "on the edge of being suburban," said Zimmer. "These people are in a very vulnerable area, tax-wise."

Farmers on Krumkill Rd. met several weeks ago to discuss the agricultural district possibility, and agreed to go ahead. The conservation

district is in the process of contacting farmers on Font Grove Rd. for their reaction. The next step would be the preparation of maps and to petition the county legislature, which may act after a public hearing.

Farmers in Knox and Rensselaerville are already working on agricultural districts for their areas. In Rensselaer County, which went to full value assessment last year, farmers have been able to claim significant reductions in their assessments as a result of agricultural districts.

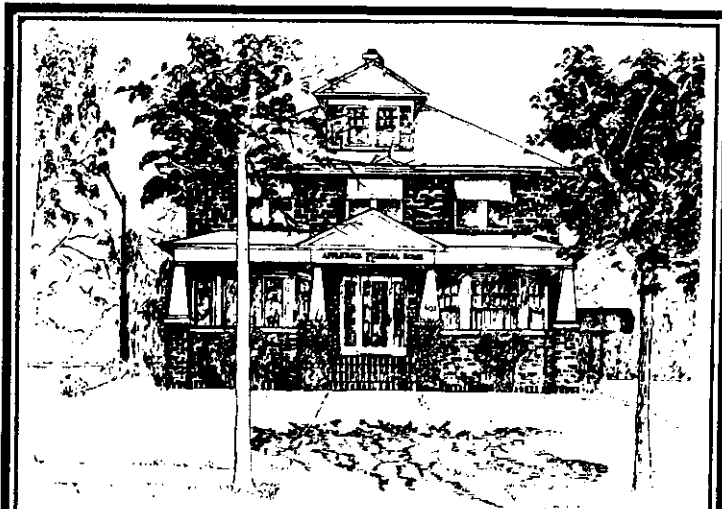
Bike thefts

March 29 — Pro Thunder 10-speed from Pheasant Lane, unregistered. Recovered.

March 30 — Aspen 10-speed from Hudson Ave., registered. Recovered.

March 31 — 12-speed from Bethlehem Public Library, registered. Recovered.

April 3 — Schwinn, non-registered, from Snowdon Ave.



Applebee Funeral Home

Inc.

—Serving the Community for three Generations—
439-2715

403 Kenwood Avenue
Delmar, New York

7 BIG REASONS TO SWITCH TO

TRI-VILLAGE DRUGS

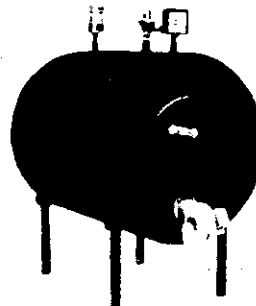
- Free delivery
- Monthly charge accounts
- Family records
- Surgical supplies — rental or sale
- Senior citizen's discount
- Hudson vitamin center
- All 3rd party prescription plans accepted

340 Delaware Ave., Delmar — 439-1369
Mon.-Fri. 9-9, Sat. 9-6, Sun. 8:30-1



THE WORLD'S MOST SENSIBLE . . .

WOOD BOILER



SPECIFICATIONS

Btu	108,000—135,000
Boiler Volume	27.6 Gal.
Blower Capacity	60 CFM
Smoke Pipe	6" ID
Supply and Return	1 1/4"
Log Length	28" to 30"
Fire Chamber Volume	7.1 cu. ft.
Approximate Weight	290 lbs.

Sensibly Engineered

- Up-to-the-minute technology! Fire chamber surrounded by systems own boiler water insuring longer life plus better heat distribution

Sensibly Operated

- Just load and light—Automatic controls take over and maintain proper water temperature—No manual adjustments necessary—Mother's Dream!

Sensibly Safe

- Two built-in fool proof safety features—30 psi pressure relief valve plus a special A.S.M.E. fusible (melt-out) plug placed in the center of the fire chamber—Should boiler malfunction for any reason, fire will be extinguished with the system's own water—Fusible plug is renewable

Sensibly Efficient

- Maintain even temperature throughout your home

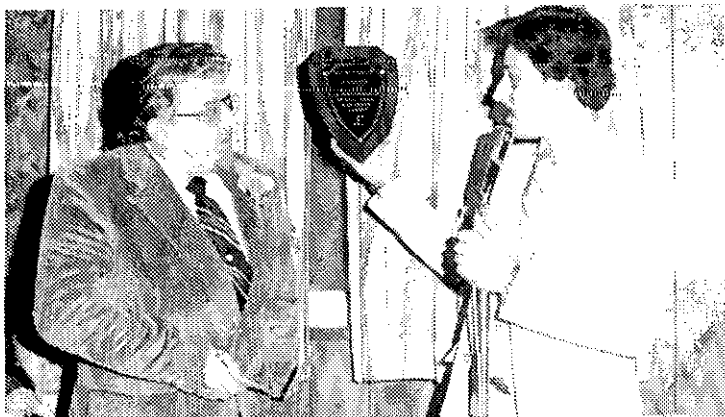
Sensibly Priced

- No fringes—No gadgets Straightforward approach permits this attractive price!

\$798 Plus Installation



MAIN-CARE HEATING SERVICE
318 Delaware Ave., Delmar, N.Y.
Phone 439-7605



A fitting farewell for retiring officer Gerald P. DeMeur came from his fellow officers and guests at the Bethlehem Police Benevolent Association's annual dinner-dance. Here DeMeur, left, receives a plaque and a check from P.B.A. President John Cox.

W. A. Campbell

George W. Frueh Sons

Fuel Oil • Kerosene
Service Anyday — Anytime

Mobil®
436-1050

Palm Sunday

**OPEN HOUSE
SUNDAY
APRIL 12
(9-5)**



Verstandig's
FLORISTS
454 Delaware Ave., Delmar
439-4946

Armed robbers sought

Bethlehem police are still running down leads on two men who took nearly \$2,000 in cash at knife point from the attendant at Upstate Petroleum on Rt. 9W, Glenmont, last Tuesday.

Pernell L. Whiting, the attendant, told police he was in a back room at the station when he heard two men enter. Both were white, wore blue jeans and dark jackets, and had their faces covered by ski hats.

They pulled knives, demanded that Whiting empty

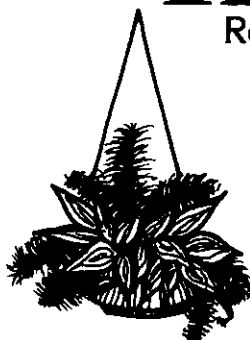
his pockets and then the desk. The first total reported to police was \$1,686, but another \$300 was added after an inventory.

The men ran toward the rear of the property after cutting the phone line. State Police combed the area with dogs, but lost the trail at Magee Drive. Whiting required five stitches in his left hand at Albany Medical Center from a knife wound.

In Glenmont, The *Spotlight* is sold at Atchinson's Superette, Heath's Dairy and Van Allen Farms.

TERRACE

Restaurant & Lounge



Dinner Specials
Prime Ribs
\$10.25

Fettucine Alfredo
\$4.95

Open for Saturday Lunches
11:30 to closing

Reservations Drinks ½ price Sat. 12-3 p.m.
accepted

99 Delaware Ave., Elsmere 462-3309
(Next to Albany Public Market)

LAWN-BOY



The Utility 20"
self-propelled model 8600

- Squeeze and go control
- Up to 30% more usable power
- Quiet, under-the deck muffler
- Easy, fingertip starts
- Quick adjust wheels
- Optional side bag available

\$219.95

Quantity Limited

Other Models Available
at Discount Prices.

BRINS HARDWARE

444 Delaware Ave., Albany • 462-4236



**Louise Bates Ames
Child achievement program**

On April 14, at 8 p.m. in the Bethlehem Central High School auditorium Louise Bates Ames, Ph.D will present a program on child achievement in the elementary school years.

Dr. Ames is co-founder and president of the Gesell Institute of Child Develop-

ment. She has written or co-authored 22 books and publications on child behavior including the "Child From Five to Ten," "School Readiness" and "Is Your Child in the Wrong Grade."

The public is invited to attend this event jointly sponsored by all the Bethlehem elementary school P.T.A.'s.

**Wedding
Photographs
by Campbell**

PORTRAIT
CANDID
COMMERCIAL

439-1381

Delmar

Garage items sought

Albany Panhellenic Association will conduct its annual garage sale on Saturday, April 11 at the home of Barbara Tate, 20 Longwood Dr., Delmar, for the benefit of its scholarship fund. Contributions of articles would be appreciated. For pickup, call 439-1327 between 5-7 p.m.

Quilters change site

QUILT (Quilters United in Learning Together) will meet at a new location on Friday, April 10. The meeting will be from 10 to 2 in the auditorium of the Bethlehem town hall, Delmar. Joyce Schlotzhauer, a quilter of national renown, will speak on "Developing a Design from Various Sources."



Seafood Restaurant Inc.
Rt. 9W, W. Cocksackie, N.Y. 12192
N.Y.S. Thruway Exit 21B
1-731-9905

BEAT THE BUNNY!

Palm Sunday, April 12

Full Course

**Boneless Breast of Chicken on Rice
\$6.90**

*Seating in the Riverboat Room for
reservations of 5 or more.*

Easter Sunday

*Enjoy dining in the Riverboat Room with
your reservation of 5 or more.*

Reserve Early!



Takamine Folk Guitar \$199

L. P. Copy Electric Guitar
20-W amp., cord,
strap, hard-shell case **\$465**

D'Addario Guitar String Sets 1/3 Off

SKIPPY'S MUSIC  *Open Noon to 6:00 p.m. Daily
10:00 to 5:00 Saturday*
**340 Delaware Ave.,
Delmar • 439-2310**

MUSICAL INSTRUMENTS—ACCESSORIES—REPAIRS—RENTALS—INSTRUCTION

— COUPON —

Protect your Investment...

**April is Salt Removal Month
at**

**Bethlehem Auto Laundry
and**

Delmar Car Wash

"The Works"

- Wash
- Turtle Wax
- Under Carriage

\$1.00 off

Delmar Car Wash
(located opposite the
Delaware Plaza, behind
Delaware Lanes)

Bethlehem Auto Laundry
(in Glenmont on Rt. 9W
just south of K-Mart)

Not Valid With Other Coupons

Expires 4/30/81

**Final
Close-Out
Save up to 40%**

on our entire inventory of
men's shoes
sizes 6 1/2-9, 11-13 available

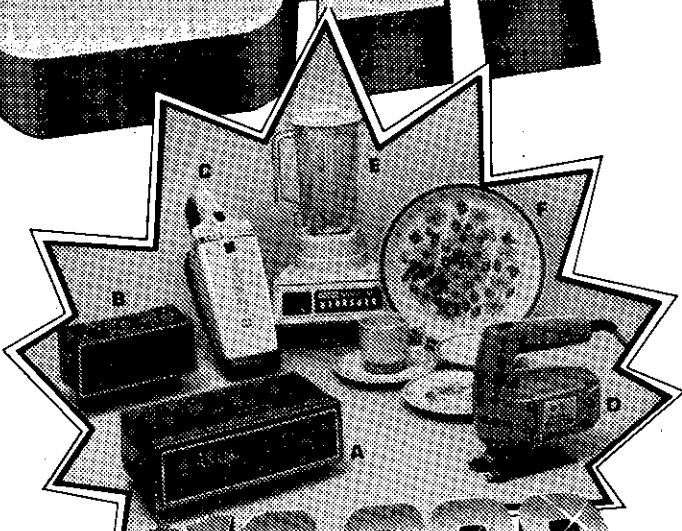


Delaware Plaza • 439-6106
Mon.-Fri. 10 to 9, Sat. 10 to 6

City & County Savings Bank

May our high interest & free gifts be with you

GALAXY GIFTS



10000 OR MORE

Your choice—free—with a deposit of \$10,000 or more.

- (A) GE CLOCK RADIO... AM/FM digital
- (B) GE ZONAR® BURGLAR ALARM
- (C) BLACK & DECKER® DUSTBUSTER... cordless vacuum cleaner
- (D) BLACK & DECKER® JIG SAW... 2 speeds
- (E) WARING FUTURA II BLENDOR®... push-button, multi-speed
- (F) SPRING BOUQUET STONEWARE... 20-pc. dinner set



20000 OR MORE

Your choice—free—with a deposit of \$20,000 or more.

- (G) COPPER BOTTOM POT SET... 7 pcs.
- (H) LLAMA OVERNIGHT BAG... 22", soft vinyl
- (I) PROCTOR-SILEX® TOASTER... 2-slice
- (J) WESTCLOX MEN'S WATCH... 17 jewels
- (K) WESTCLOX LADIES' WATCH... 17 jewels

About Your Gift Merchandise

Our "Galaxy" offer is one gift per account. All gifts must be picked up at the bank. An alternate gift choice within the same category will be offered should demand exceed supply. Actual merchandise may vary slightly from the illustration. The bank assumes no liability to customers or other individuals for damages, direct or indirect. Warranties — express or implied — are the responsibility of the product manufacturer.

TM Trademarks of General Electric Company.
[®] Registered trademarks: Black & Decker Manufacturing Company; Waring Products Division, Dynamics Corporation of America; Proctor-Silex, SCM Corporation. "Micromate" and "Pyrex" registered trademarks of Corning Glass Works.
TM "Homestead" trademark of Corning Glass Works; "Panhandler" trademark of Proctor-Silex, SCM Corporation.

Reach for the stars with high-interest savings at City & County Savings Bank. Take home a free gift when you open a new savings account or add to your present account with a deposit of \$500 or more... or renew a savings certificate.

Your investment may be in passbook savings or time deposits. The deposit that qualifies you for a gift must remain on deposit with the bank a minimum of 12 months; or, in the case of a deposit of \$10,000 or more, a minimum of 26 weeks.



FREE OR MORE

Your choice—free—with a deposit of \$500 or more.

- (R) TOTE BAG... soft vinyl
- (S) COPPER BOTTOM SKILLET... 10 1/4" diameter
- (T) GE TRIPLE TREAT® DONUT MAKER
- (U) PYREX® HOMESTEAD™ CASSEROLE... 2 1/2 qt., cover included
- (V) WINDSOR HIGH-INTENSITY LAMP



FREE OR MORE

Your choice—free—with a deposit of \$1,000 or more.

- (L) SPRING BOUQUET STONWARE... 4-pc. completer set
- (M) GE CUSTOM PORTABLE MIXER... 3 speeds
- (N) CORNING MICROMATE®... 10" skillet
- (O) GE AM/FM PORTABLE RADIO
- (P) PROCTOR-SILEX® PANHANDLER™
- (Q) ROBERTSHAW ELECTRIC WALL CLOCK

DEPOSITS INSURED UP TO \$100,000 BY THE FDIC

Passbook Savings

Save for a bright future with Regular Savings or Day of Deposit to Day of Withdrawal Savings. With either type of account your deposits earn a 5.73% annual yield* on an annual dividend of 5.50%, compounded daily and credited quarterly.

*Annual yield is earned if principal and interest remain on deposit for one year.

Savings Certificates with sky-high interest

2 1/2-Year Certificates

12.94% **12.00%**

effective annual yield on

interest per annum

MINIMUM DEPOSIT ONLY \$500

Rate Effective Thurs., April 2 - Mon., April 13

The effective rate at the time you buy your certificate is guaranteed for the full 30-month term. At City & County Savings Bank, your interest will be compounded daily and credited monthly. To realize the yield shown, principal and interest must remain on deposit for a full year. Substantial interest penalty is required for early withdrawal. This offer may be withdrawn without notice.

Six-Month (26-week) Certificates at the latest money market rate

14.737% **14.033%**

effective annual yield on

interest per annum

MINIMUM DEPOSIT \$10,000

Rate Effective Tues., April 7 - Mon., April 13

The rate in effect when you buy your certificate is the rate you will receive for the entire six-month term of your investment. Your interest is credited monthly. To realize the yield shown, principal and interest must remain on deposit for a full year. Your certificate would have to be renewed at maturity at the interest rate shown to earn this yield. That rate may be higher or lower at time of renewal. Under federal regulations, compounding of interest during the term of this deposit is not permitted, and substantial interest penalty is required for early withdrawal. This offer may be withdrawn without notice.

Disclosure statements under the Truth-in-Savings Law are available at all offices of City & County Savings Bank.

We're here on your account.

City & County Savings Bank

ALBANY BETHLEHEM ROTTERDAM SCHENECTADY-NISKAYUNA



Member FDIC

Voorheesville News Notes

Maryann Malark 765-4392

The Helderview Garden Club is in full swing for a full Spring. The club will present Earle Pudney April 9 at the Voorheesville Methodist Church at 7 p.m. He will demonstrate Bonsai planting, using a Carissa Grandilora (Natal Plym). Pudney has completed his office as President of the Mohawk Hudson Bonsai Society, and is also a member of Bonsai International and the American Bonsai Society. Mrs. Bert Blair will be hostess for the evening with the help of Evelyn Berger and Karen Griffen. Anyone interested in Bonsai is welcome to attend.

The Garden Club has wonderful plans for its annual plant sale, held yearly in front of the Voorheesville Grand

Union the Saturday before Mother's Day, May 9. There will be plants, perennials, bulbs, fresh flower arrangements, fabric flower arrangements, corsages, and specially made gifts the children can buy for under \$1.

A raffle will be held on three plants, donated by Kirk's, Marianni's and The Garden Shoppe. Raffle tickets are available from any member or at the sale.

As one of their contributions to the village, the community committee will once again be doing flower arrangements in the flower boxes throughout the community. The club also does the planting of tulips and daffodils at the grade school and has done the plantings at the town park on Swift Road for the past two years.

Mrs. Bernard Mulson, a certified judge for formal flower shows and also a member of the Guilderland Garden Club, will give a demonstration on flower ar-

ranging at the May 13 meeting at the Voorheesville Methodist Church at 7:15 p.m. The members will do their own arrangements. Mrs. Mulson will gently judge each arrangement using the judging criteria of a formal flower show. Emily Laraway will hostess the meeting with the help of Carole Bulger and Mary Ann Eaton.

The Helderview Garden Club will complete their year with a banquet in June.

All the Garden Club meetings are open to the public and prospective members. If you would like to attend any of the above meetings, call Joann Donohue, 765-4400, or Shirley Greene, 765-4074.

Voorheesville Elementary School's fifth and sixth graders will be the guests of the Albany Symphony Orchestra's eleventh annual Full Symphony Youth Concert on Tuesday, April 14. The students will enjoy such pieces as the Circus Overture by William Schuman, Beethoven's Fifth Symphony, Overture to Candide by Leonard Bernstein and Epilogue from Comedial Suite by Kabalevsky.

Fifth grade students in Mrs. Andrea Gleason's science class were visited recently by Pascal Grenfell, a retired engineer from General Electric. Mr. Grenfell, son of Sir Wilfred Grenfell well-known medical missionary in Labrador, shared his world-wide insect collection with the young scientists.

On Wednesday, April 15, at 7:30 p.m. in the Voorheesville Elementary School gym, students in Second, Fifth and Sixth grades will demonstrate their skills in physical education.

Second graders will perform Virginia reels, Mexican hat dances, and marching exercises.

Announcer Danny McKenna will introduce fifth and sixth graders as they demonstrate scooter games, parachuting, stunts and tumbling, balance beams and rope climbing. Physical Education coordinators are Barbara Karl, Ferne Horn and Reed Schultz. Parents and community are invited to the display.

The children of the Community Nursery School of Voorheesville recently spent a delightful evening with their fathers at the school. Activities for the annual "Fathers Night" included baking soft pretzels, making hand prints and showing off their school room. The fathers were presented with paper weights which were made by the

The Lobster Pound

246 Delaware Ave., Delmar—Next to the A&P

Tues.-Sat. 9:30 to 6, Sun. 10 to 2.

PLACE YOUR LENTEN ORDERS NOW

439-3151
Fresh Oysters

Lobsters
Blue Fish
Scrod Filet

Boneless Swordfish

SHRIMP
SCALLOPS
LOBSTER TAILS
CRAB MEAT
PRE-COOKED COCKTAIL SHRIMP

CHOWDER
New England &
Manhattan

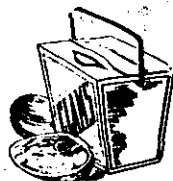
Haddock
Flounder
Ocean White Fish

FLOUNDER
HADDOCK
SCROD
SWORDFISH
SALMON

For Your Dining Pleasure
Visit the Lobster Pound Restaurant
Rt. 9 Latham

Our other Seafood Markets Located at:
1806 Western Ave., Albany—Rt. 50 Burnt Hills
Rt. 9 Adjacent to Lobster Pound Restaurant
Serving the Capital District for over 20 years

CANNED AND FROZEN SEAFOOD



Delaware Plaza
DELMAR, NY
Open
Sundays
12:00 Noon
to 5:00 p.m.

Little
Folks

We'll make your
motor
sing



- Engine Tune-up
- Front End Alignment
- Automatic Transmission Service
- Modern Equipment
- Skilled Mechanics

BAILEY'S GARAGE

Oakwood Road, Elmsere
Phone 439-1446

BUSINESS

Phone switching center to open

New York Telephone's new, all-electronic switching center at 330 Delaware Ave. in Delmar will be opened in April or May, the company has announced.

The new center will allow customers in the 439 Delmar exchange to buy a number of new features such as overseas dialing and call waiting, but

will also mean an end to the five-digit dialing now possible within the exchange.

The new Delmar facility is part of the telephone company's \$1.2 billion construction program throughout the state this year.

The new Delmar office, 6,600 square feet of space, will replace the existing electro-mechanical switching office on Adams Place. Gary Lewton, district manager, noted that an electronic switching

system takes less space and is generally less expensive to maintain.

The new equipment makes available four optional calling services to Delmar customers. They are call waiting, which lets persons making a call know when another caller is trying to reach them; call forwarding, allows incoming calls to be automatically routed to another number; three-way calling and speed calling, which allows abbreviated dialing for frequently called number.

this dynamic era. The exhibit runs through April 22.

One of the most powerful influences on poster art at the time was the public's sudden fascination with travel. Streamlining of autos, ships, trains and planes was a call to the future.

The exhibit will also include several posters, fashion designs, and stage designs which illustrate the striking influence of Art Deco on the theater, both here and in Europe.

Rice takes new post

Stephen W. Rice of Delmar has been named the executive director of the New York State Association of Plumbing, Heating, Cooling Contractors, which is affiliated with the national association in Washington, D.C.

Rice, a graduate of the State University at Buffalo, has been on the staff of the Business Council of New York State, and previously worked for the New York State Senate and the Empire

Seductive exhibit

It has been said that the 20's and 30's were the most colorful in modern art history.

The Art Deco style combined many contemporary art influences — cubism, surrealism, futurism, and the abstract — to seduce the public with bold and provocative expressions of reality.

Posters Plus Galleries, 295 Hamilton Street, Albany, has assembled a fascinating exhibit of posters and art from

PAPA'S RESTAURANT & LOUNGE

Daily Special:

Veal Scallopini \$5.95

Friday only special:

1 lb. King Crab Legs \$7.45

WE DELIVER TO THE TRI-VILLAGE AREA

Mon.-Sat. 11:00 a.m. - Midnight
Sunday 3:00 p.m. - Midnight

261 Delaware Ave.
439-5673, 439-4544

Dick Domermuth and Sons

Our 29th Year

SIDING & TRIM

Our Only Business

— Free Estimates —



768-2429



We're coming Up Houses!

Town—

Elegant colonial in King James Grant—quality everywhere—slate foyer, all hardwood floors. Master bedroom suite—gourmet kitchen—family room with barn-siding and fireplace plus basement game room—\$129,900.

Country—

Comfortable farm house set on a hill with 10 acres and a spectacular view—wide board floors, beamed ceilings inground pool and income aptment.—\$129,000.



ForeSite Properties, Inc.

H. Eaton
L. Brouel

439-8129

children during the school day.

The Youth Program sponsored by the Voorheesville Methodist Church is embarking on its first major fund raising project. Youth from the group will be going door-to-door during the week of April 5 taking orders for Easter corsages made especially for the program by Inga Barth Florists. Corsages will be personally delivered the following Saturday, April 18, in time for Easter Sunday.

Members of the Youth Group encourage families in the community to take advantage of this lovely way of remembering mothers, daughters, grandmothers, senior citizens and other special friends.

Descriptions of the selection of corsages offered and the price list are also available by calling the Youth Program Coordinator, Chris Deily, at 439-2104, who will also be accepting orders and arranging delivery. The deadline is April 12.



Enjoying their Easter corsages, members of the Methodist Church youth program are, from left, Bill Petrone, Harold Weaver, Lisa Petrone, Sonja Phinney (front) and Michael Richardson. Florist Inge Barth is at right.

OPEN HOUSE PALM SUNDAY

Easter Corsages
The Largest Assortment
of Flowers in the City

MARIANI'S
GARDEN CENTER FLORIST

Dom Mariani, Prop.—342 Delaware Ave., Albany
Corner of Bertha St.—462-9146—"Our ONLY Location"

WELLS & COVERLY

A tradition of quality.



The Austin Reed
"VESTED
BLAZER SUIT"

This vested, blazer suit is an inspiring combination. The versatile coat can be worn as a separate blazer.

Wrinkle resistant blend of 65% dacron, 35% wool travels well. Mid-weight hopsack fabric provides you with multi-season comfort. Navy, camel or grey. Reg., short, long.

\$230

Stuyvesant Plaza

THE COMPANY GARAGE



OFFICIAL NEW YORK STATE INSPECTION

\$2.99

QUAKER STATE OIL 10W/40

— Please phone for appointment —

767-9721

Corner 9W & 396
Selkirk, NY

24 Hr. EMERGENCY Service (across from Convenient Food Mart)

Stone Ranch

This custom ranch is situated on a large beautifully landscaped lot in Delmar. Features include quarry stone exterior, large private inground pool, two fireplaces and much, much more.

Call for complete details
Offered at \$132,000.



K KLERSY REALTY
439-7601

• 282 DELAWARE AVE.
DELMAR, NY



HENRY J. KLERSY JR., BROKER

State Chamber of Commerce. He is the son of former Bethlehem Town Justice and Mrs. Robert H. Rice.

Elected AAUW president

The Albany branch of the American Association of University Women recently elected Frances George, of Glenmont, as president and Sheila Galvin of Delmar as first vice president and program chairman. Continuing officers include Angelina Catinella of Delmar, second vice president and membership chairman. Officers will be installed at a spring dinner meeting on May 27. For reservations call Marion Johnson at 459-1760.

Four key promotions

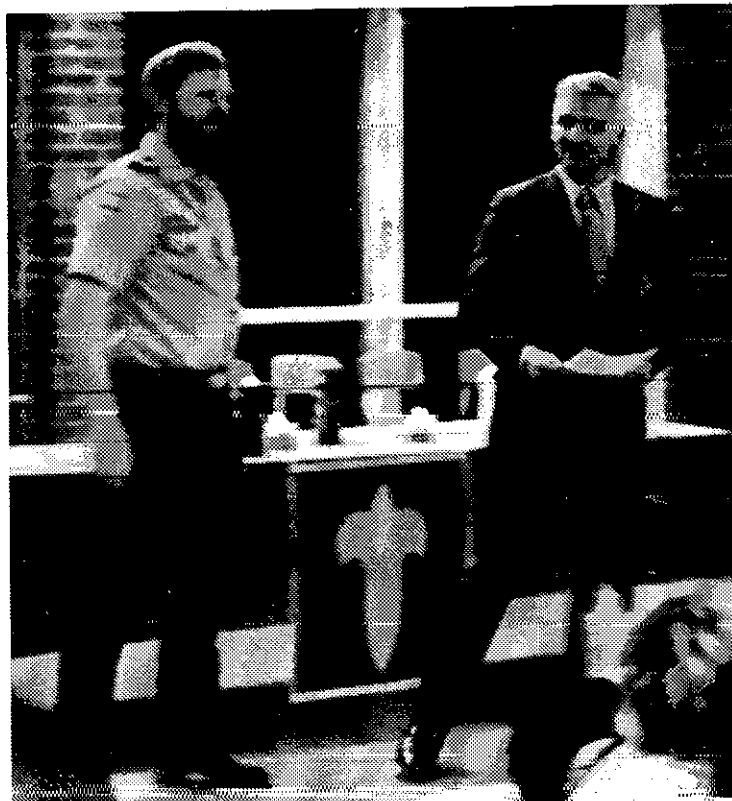
Key Bank N.A. recently announced the promotions of four Bethlehem area residents. Richard P. Sherwin of Delmar has been named administrative vice president of the Commercial Loan Division, Arthur F. Young, Jr., of

Delmar was appointed senior vice president of the Loan Review and Recovery Department in the Loan Administration Division, Marvin B. Elliott of Voorheesville was promoted to vice president and manager of the Delmar office, and Helen T. Hoole of Delmar was named assistant vice president in the Systems Development Department of the Operations Division.

Named managing editor

Denise Woodin, who reported for *The Spotlight* last summer, has been appointed managing editor of the Houghton Star, the Houghton College newspaper. A journalism major at Houghton, she is a 1979 graduate of Bethlehem Central High School and has written for the Bethlehem Star as well as the *Spotlight*.

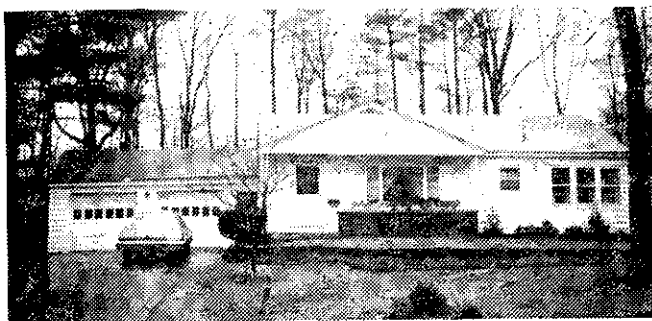
In Elsmere, the *Spotlight* is sold at the Paper Mill, Plaza Pharmacy, Johnson's Stationery, Cumberland Farms, and Mullen's Pharmacy.



The symbolic transfer of the charter for the combined Glenmont-Hamagrael Cub Scout troupe went from Cubmaster Joe Plunkett, left, to Glenmont Principal Donald Robillard at the troupe's recent Blue and Gold dinner. *Tim Haverly*

A Lovely Delmar Ranch

Priced to sell, this 3-bedroom stone and frame ranch is on one of the nicest tree-lined streets of Delmar. The house is fully insulated, has new wiring, is fully applianced and has a 2-car garage. A large living room with fireplace and a large picture window overlooking a gorgeous lot. **\$52,900**



Individual Service - Professional Marketing

Nancy Kuivila
REAL ESTATE, INC.
276 Delaware Ave., Delmar
439-7654

Economy Minded!

Come to Our Open House on Saturday, April 11, 1981
from 1-4 p.m.

Directions: Route 85A to 5540 Maple Avenue in Voorheesville.



This fine brand new 2 Family Custom Built Cape offers all the great amenities of 1 family living, with a separate income apartment on the side.

- Living Room
- Dining Room
- Eat-in Kitchen
- 3 Bedrooms
- 1½ Baths
- Family Room
- 2 Car Garage
- Income apartment with living room, kitchen, 1 bedroom and bath
- Perfect for in-law situation
- Separate gas heating systems
- Approximately ½ acre lot
- All for \$88,900

CALL TO SEE IT TODAY!

PICOTTE
REAL ESTATE



439-4943
205 Delaware Ave.
Delmar, NY

We bring people home.

Way-Curtis

Mr. and Mrs. Edwin K. Way of Kenwood Ave., Delmar have announced the engagement of their daughter, Marilyn to David Curtis, son of Mr. and Mrs. S. Harold Curtis, Evans Mills, NY.

Miss Way is a graduate of Bethlehem Central and received a degree in physical therapy from the Russell Sage College-Albany Medical College School of Physical Therapy. She is employed by the Visiting Nurse Association of Albany, Inc.

Her fiance is a graduate of Indian River High School, Philadelphia, NY, and received a degree in civil engineering from Clarkson Col-



Marilyn Way

lege of Technology. He is employed by the New York State Health Department.

An Oct. 10 wedding is being planned.

Gay-Cazzato

Mr. and Mrs. Edward H. Gay of Kinderhook have announced the engagement of Miss Deborah S. Gay of Colonie to Michael L. Gazzato of Albany.

She is employed at Doanc Stuart School in Albany. An Aug. 28, 1982 wedding is planned.

Gates-Smith

Mr. and Mrs. Elmer Gates, 78 Cambridge Rd, Glenmont, have announced the engagement of their daughter, Patti Ann, to Mark Alan Smith of Erie, Pa.

Miss Smith is a nurse in the neonatal intensive care unit at Albany Medical Center. She is a 1976 graduate of Fairview High School, Fairview, Pa., and a 1980 graduate of Villa Maria College, Erie, Pa.



Patti Ann Gates

Her fiance is a graduate of Cathedral Preparatory School in Erie, Pa., and is employed at the General Electric Co. in Erie.

A July 18 wedding at Bethlehem Lutheran Church is planned.

BUY A PHONE ONCE AT HILCHIE'S
 Dial or Push-Button
DON'T RENT FOREVER
 Decorative Colors

SPECIAL Prices start UNDER \$30⁰⁰

Phone Accessories for Installing In Stock

HILCHIE'S
SERVITAR Hardware
 235 DELAWARE AVE.
 DELMAR, N.Y. 12054

VISA
 master charge

BUD JONES
SERVICE
 Complete Auto Repairing
 Road Service and Towing

14 Grove St., Delmar, NY

HERE WE ARE

- Brakes • Lubrication
- Wheel Alignment & Balance
- Ignition Service
- Electrical • Air Conditioning
- Dyno Tuning
- Foreign Car Service
- Cooling System Problems
- Gas Tank Repairs

7:30 a.m. - 5:30 p.m. Monday - Friday
 Saturday & Sunday Emergency Road Service Only
439-2725

Bathing Suit Weather Is Just Around the Corner!

How will you look in yours?
 Fair and Flabby?
 Or, Tan and Trim?
 The choice is yours!

THE TANNING HUT SYSTEM
 FOR ALL SEASONS

Nautilus
 Total Fitness Center
 154-B Delaware Ave.
 Delmar, NY 12054
 439-2778

To sing in competition

John Darnall, Jr., son of Mrs. Roberta Hunsaker, Bender Lane, Delmar, will participate in a vocal music competition as part of his studies at the Albany Academy.

Six young Bethlehem musicians will perform at the fifth annual youth concert sponsored by the Chinese Community Center. The program is free to the public and will be held Saturday, April 18, at 7:30 p.m. at the Egg, Empire State Plaza.

Among the performers are Abner and Kevin Huang, Fred and Portia Wu, Alice Peng and Joyce Shen.

Susan Darling in show

Susan E. Darling, daughter of Mr. and Mrs. Edwin B.

Darling of Elsmere, will be exhibiting in the Watercolor Invitational Show at the Schenectady Museum from April 11 through June 7. The public is invited to a reception on Saturday, April 11, from 3 to 5 p.m.

In craft exhibit

Trina McCandless, daughter of Mrs. Edward D. Palmer of Slingerlands and the late Dr. Frederick McCandless, will have three exhibits in the fifth National Invitational Crafts Exhibition at the Skidmore College art gallery April 16 through May 10. The exhibition will then travel with the Gallery Association of New York for two years to 15 galleries in various Eastern states.

Bike Day rescheduled

Bethlehem's Bike Day has been rescheduled to Saturday April 25, to avoid a conflict with the Tri-Village Little League opening day ceremonies. The event will take place from 10 a.m. to 2 p.m. at the Bethlehem Public Library.

Participating bicyclists must have current town bicycle registrations. See the Spotlight Calendar for registration dates and places.

Tulip contest time

If your tulip garden is coming up like roses, it may be a winner in the 1981

Frontyard Planting Contest of the Albany Tulip Festival. For the past 33 years, the Albany Tulip Festival committee has encouraged residents of Albany County to enter the contest.

Judging is based on originality of tulip bed design, color placement and hardy growth. For further information or entry blanks, contact Mrs. Evelyn Sturdevan at 482-4991.

In Elsmere, the *Spotlight* is sold at the Paper Mill, Plaza Pharmacy, Johnson's Stationery, Cumberland Farms, and Muller's Pharmacy.

Our 32nd year making our own

ICE CREAM

Featuring 20 Flavors,
Including Black Raspberry,
Pistachio and Spumoni

TOLL GATE

ICE CREAM & COFFEE SHOP
in Slingerlands

Serving Lunches and Dinners
from 11 a.m. to 10 p.m., 7 days a week

ANDRIANO'S II

Restaurant & Lounge

155 DELAWARE AVE.
ELSMERE



Serving
Mon.-Thurs.
11 a.m. - Midnight
Fri. & Sat.
11 a.m. - 1 a.m.
Sun.
3 p.m. - 9 p.m.
439-7112


Mclsaac, Mclsaac, and Johnson

Attorneys at Law

Roberts Real Estate Building
190 Delaware Avenue
Delmar, NY
(518) 439-9304

Office Hours:
Monday thru Friday
Evenings and Weekends
By Appointment

TUTORING YOU CAN TRUST



- Reading
- Math
- Study Skills
- SAT Prep
- Speed Reading
- All Ages

THE LEARNING CENTER

• 12 Colvin Ave., Albany •
459-8500

BASEBALL

Things looking up for BC nine

It has been quite a few years since the glory days of Bethlehem Central baseball. According to veteran member Art Ritchko, the 1981 Eagles have more strength at every position than a year ago, and are certain to be a spoiler if not a bonafide contender.

BC will need more hitting and some consistent pitching to be a big factor in the Suburban Council race, and there is no one to hit the long ball, but the defense is certain to be an improvement over last year's mediocre club.

If nothing else, the Eagles will be strong down the

middle. Henry Field, the team's best hitter, is a fixture behind the plate. Dave Usher, a varsity starter as a sophomore who didn't come out for baseball last year, will play short, and Chris Congemi, a sophomore starter last season, will return to second base. Tom Dexter, a speedy outfielder up from the jayvees and a fair hitter, will be turned loose in center.

standing breaking stuff, but Ritchko feels they can hold their own and keep the bases from clogging up in the early innings.

Concra will play first base when he's not pitching, otherwise it will be Andy Smith, a junior, or Fred Hasselbarth, a senior who played shortstop in 1980. Steve Radzysinski, a senior utility infielder, or John Weishaar, a senior, will occupy the other corner at third.

Flanking Dexter in the pasture will be Brian Peek, Mike Kendrick, or Stu Alloway, a backup catcher who may get in for his hitting.

In Glenmont, The Spotlight is sold at Atchinson's Superette, Heath's Dairy and Van Allen Farms.

Ritchko has selected five pitching hopefuls from the largest turnout of ball players at Bethlehem in several years. Two seniors, Lou Concra and Steve Malone, had strong finishes last season, and should anchor the staff. The supporting cast consists of three juniors, Corson Maley, Jim McGuinness and Bill Hefernan. None of the five is a flamethrower or has out-

\$
\$

to 30% to 50% Off

DEL MAR WOVEN SHADES

Order any style. We also have super values on Draperies, Bedspreads, Slipcovers, Window Shades and Vertical Blinds. Come into our store or call 237-9260. Sale Ends 4/15/81.

PHONE AND MAIL ORDERS

Use Visa or Mastercard

DEITCHER'S

WALLPAPER OUTLET

188 REMSEN ST., COHOES

SAVE \$\$\$ 237-9260

80,000 Rolls in stock

1st Quality

Save \$\$

Make a Basketful of Easter Treasures

See our cute bunnies and baskets to make and enjoy
Plus Handcrafted Gifts and Decorations
 Silk Flower Arrangements
 Mini Arrangements
 Door Hangings
 Baskets



Forget-Me-Not

135 Adams St.

439-1244

LUMBER

Treated Lumber—Plywood—Sheetrock
 Pine—Spruce—Cedar—Redwood—Doors
 Cement—Roofing—Moulding—Windows
 Ceiling Tile—Insulation—Styrofoam
 Purina Products

Bring in or mention this ad and receive

FREE PURINA DOG DISH
 with 50 pound purchase

W.W. CRANNELL



LUMBER

Weekdays 7:30-5:30
 Sat. 8:00-4:30

Voorheesville

WE DELIVER

765-2377

Lee's
 Chinese
Restaurant

featuring fine
 Cantonese, Mandarin, Szechuan,
 Polynesian and American cuisine

**LUNCH, DINNERS & TAKE-OUT
 DELICIOUS COCKTAILS**

Mon-Thurs 11-10 Fri-Sat 11-10:30 Sun 12-10

DELAWARE PLAZA 439-6662 439-9086

李苑酒家

DR. MARSHALL L. PRICE

Proudly Announces the Opening
 of an Additional Office for the

Practice of Family Dentistry

at
 2031 Western Ave.
 Guilderland...456-7471

New Patients Accepted at the New Location and at
 the 3734 Carman Rd., Schnectady Office....356-0077

More trophies for Judy

Judy Parker of Delmar represented the University of Iowa in the Association for Intercollegiate Athletics for Women (AIAW) indoor track national championship meet at Idaho State University in Pocatello, March 13-14. She qualified in the 3,000-meter run with a time of 10:24.25 and in the 5,000-meter run with a time of 16:16.63.

As a freshman this year, Parker finished 12th at the Big Ten cross country meet, fourth at the AIAW Region VI meet and 45th at the national meet. She placed third in both the two-mile and three-mile at the Big Ten indoor meet and also qualified for the AIAW national outdoor meet in the two-mile. While at Bethlehem Central High School, she placed second in the state cross country meet and owns the school cross country record.

Baseball registration

The Bethlehem Recreational Baseball League will conduct a registration for players at 10 a.m., Saturday, April 18, at the park office, Elm Avenue Park, Delmar.

Players must be 16 years of age and older. For information, contact Bruce Austin, 439-1027.

Programs on stars, spring

Five Rivers Environmental Education Center, Game Farm Road, Delmar, will be presenting two free public programs early in April. On Friday evening April 10, at

7:30 p.m. the Albany Area Amateur Astronomers will be joining Five Rivers for an evening of star-gazing. The outdoor program will cover constellations and their legends, as well as a look through telescopes at planets and deep sky objects. An indoor program will be substituted in case of overcast sky or rain.

On Saturday, April 11, at 2 p.m., a guided interpretive walk will be led on the signs of spring, looking at plant and animal changes as the spring season begins.

Horse Expo Saturday

Interested in Horses? Looking for a good buy on some used tack or riding apparel? Have some tack or riding clothing, that you don't need any more and would like to turn into cash? Consider the Albany County Horse 4-H Clubs and Cooperative Extension Association tack exchange horse exposition.

This event will take place on Saturday, April 11, from 11 a.m. to 4 p.m. at the Albany County Resources Development Center building on Martin Road, off Route 85A, Voorheesville, NY.

Activities on the program for the day include slide presentations; a talk on shoeing and hoof care by William Craft of Selkirk, a film on unsoundnesses, a presentation and discussion on competitive trail riding, a film from the Hudson Valley Arabian Association and an outdoor demonstration on trailer hook-up and safety (weather permitting).

SPRING HAS SPRUNG!

Now's the time to check your roof for cracked or bad shingles, ripped flashing and on metal roofs, for cracked seams and the need for re-coating. Putting off roof repairs can mean extensive repairs later on. If you're the do-it-yourselfer, I'll figure what materials you need and get you started . . . reasonably. **FREE INSPECTIONS and ESTIMATES.**

THE HOUSE MENDER After 5 pm
872-1639

At last...someone who does everything!!!

COUPON

Re-introductory Offer of KILLIP Superb Services

With many new natural fabrics reappearing on the market requiring professional service
KILLIP is offering a 10% DISCOUNT
on all Household Items until April 15, 1981

with this coupon



35 Commerce Ave.,
Albany, N.Y. 12206
489-2931

FREE Pick Up and Delivery

here's
Heloise

"The premier household-hints columnist of all time" with over 2,000 tips on how to save time, money and energy inside and outside of your home.

New in **Book House**

Stuyvesant Plaza
489-4761



THIS WEEK'S HIGH SCHOOL SPORTS SCHEDULE AT BETHLEHEM CENTRAL

- Thurs., Apr. 9** Boys Track, Niskayuna & Burnt Hills, home 3:45
Girls Track, Shenendehowa at Colonie, 3:45
- Fri., Apr. 10** Baseball, Shaker, home 3:45
Softball, Mohonasen, home 3:45
- Mon., Apr. 13** Tennis, Colonie, away 3:45
- Tues., Apr. 14** Boys Track, Columbia & Guelderland, home 3:45
Tennis, Albany Academy, home 3:45
- Wed., Apr. 15** Softball, Colonie, away 3:45
Girls Track, Scotia, home 3:45
Tennis, Guelderland, home 3:45
Baseball, Burnt Hills, away 3:45

COMPLIMENTS OF



CALL 436-0838

RL 9W & Southern Blvd.
(at Thruway Exit 23) Albany

TENNIS

BC netters eye banner season

Bethlehem Central will be the team to beat in the Suburban Council tennis scramble, thanks to its depth of talent and its combat experience. The Eagles, offering four battle-tested singles players, have a real shot at the league's perennial powerhouses, Niskayuna and defending champion Shenendehowa, the latter devastated by graduation but with a wealth of talent ready to step in.

Bethlehem goes this year

with a new coach, the first female to take over the varsity. Coach Julie Besteman, a homegrown Delmar product, not only has a new assignment in her first year on the BC staff, but will have a new name after her marriage later this month.

Julie, a varsity tennis player at Calvin College in Michigan last season, inherits from Phil Ackerman two juniors who will probably fight it out for the top two singles slots. Jeff Goodman played No. 1 singles most of last season, and Alex Marcario finished his league season with eight

straight victories in the No. 3 slot, placed fourth in the Suburban Council singles tourney and was the only Eagle to make the Sectionals in 1980.

Right behind are two experienced seniors, Scott Rukwid, No. 5 last year, and Jeff Elletson, a transfer from Albany Academy where he was on the varsity, and Mike Cole, a sophomore shotmaker who could rise in the singles ladder. Charlie Marden, also a sophomore, will probably play No. 6.

BC's doubles lineup will depend on eliminations being played this week and on Besteman's experimenting with combinations. Junior Jim Lenden, who teamed with Cole in No. 1 doubles a year ago, will probably play No. 1 doubles with Dave Reusswig, a senior co-captain with Elletson. Other doubles hopefuls are Mike Hetling and the Evan twins, Amir and Shye, all seniors; Tim Talmage, a sophomore; Joe Curl, a junior who played varsity doubles last year, and Van Thorne, Ed McCall, Dan Miller, John

Bobeck and freshman Andy Saidel.

"We have a lot of depth and a lot of strong players," Besteman said over the weekend as her team prepared to take on South Glens Falls, defending Section 2 champions in a non-league match on the Delaware Ave. courts Tuesday of this week. "We are working on consistency and conditioning to be ready for what may be a lot of long three-set matches. We'll be right up there."

The new coach is serious about conditioning for endurance. She puts the boys through 20 minutes of running and fitness drills before letting them pick up their racquets for the afternoon's workout. The team worked indoors at Southwood, and has been outdoors for the past two weeks.

The schedule calls for 15 matches, 12 in the league (only the first 10 count in the standings), and a home-and-home series with Albany Academy in addition to South Glens Falls. The Suburban Council opener is with Coltonie on Monday.



On New Scotland Road in New Salem—15 Minutes from Albany

Traditional Easter Ham Dinner

including soup, salad, entree & dessert, coffee & rolls

\$5.95 complete

Senior Citizens **\$4.95**

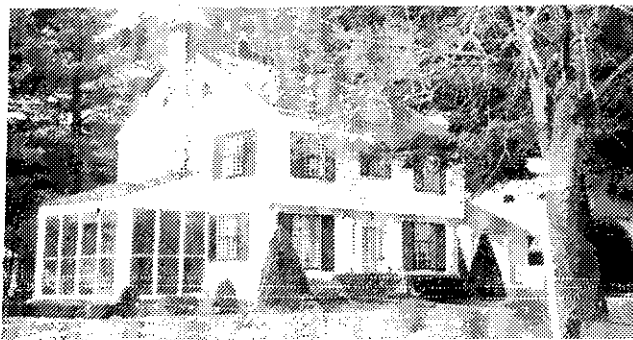
Make Your Reservation Early!

765-4426

**Live Entertainment
Friday, Saturday & Sunday**



FIRST TIME OFFERED



- Gracious, center entrance Colonial
- Charm, location and convenience
- Offered at \$79,900

Call Betty Reno

PAGANO

439-9921

WEBER



**Frank's
Door Service**

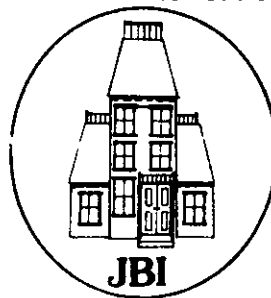
We Hang Doors

All Types - Wood - Metal

Special Sizes - Residential - Commercial

767-9460

24 Hr. Emergency Service



**Josette
Blackmore**

Interiors

— complete interior design services —
Carpet, furniture, custom draperies,
upholstery, slipcovers, bedspreads.

— home consultation —

439-3775

Featuring Greeff, Brunswick & Fils,
Stroheim & Romann, Schumacher Fabrics

414 Kenwood Ave., Delmar

Tues.-Fri. 10:30-4:00

Tennis program on tap

A tennis instruction program for children in grades four through eight will be held Saturdays beginning April 9 at the Bethlehem Central High School courts. Beginners will meet from 9 to 10 a.m., intermediates from 10 to 11 a.m., and advanced players meeting from 11 a.m. to noon.

The program is open to residents of the Town of Bethlehem and Bethlehem Central School District and registration can be made at the first two sessions. There is a \$6 fee.

Instructor for the program is Tom Kurkjian, coach of the Voorheesville High School tennis team.

Tennis on Swift Rd.

A junior tennis program for boys and girls in grades 5-8 at the New Scotland town park will get underway on Saturday, April 25. The five-week clinic will be directed by Phil Ackerman, Southwood tennis pro and former coach of the Bethlehem Central varsity now coaching at Voorheesville High School. Class size will be limited to 10 per hour in each of three categories, beginner, advanced beginner and intermediate.

Hard work 'key' for club

With the help of an increased membership this year, the Bethlehem Central High School Key Club won a first place trophy at the Pine Hotel in South Fallsburg, New York. In the Silver Division, where 31 clubs competed, the one and a half foot trophy was awarded to Bethlehem's Key Club for the highest achievement in service to community and school during the past year.

The 45-member club was represented by a delegation of ten members, headed by President Kate Finin and President-elect Lori Guynup. The key clubbers will also be sending a representative to the international meeting of Key Clubs to be held in New Orleans in June.

The young "good samaritans" are already back at work and planning for the future. Most recently they held their annual Daffodil Day, selling flowers for the Cancer Society. In cooperation with the Teachers' Association, the club will soon be sponsoring a Bloodmobile at the BCHS gym, where they hope to attract at least 130 people.

Although the group has

won several awards over the last three years, this was their most important one.

Julie Ann Sosa

Senior ball meeting

An organizational meeting for parents of Bethlehem Central High School seniors to plan for the After-the-Senior-Ball activities, will be held Wednesday, April 15, at 7:30 p.m. in the BCHS library.

This year's Senior Ball will take place on Friday, June 5, and many parents are needed to help with the after-dance activities. Most of these will take place at the Bethlehem Town Park, weather permitting, and among them will be swimming, tennis, bowling, and a breakfast.

Heading the parent committee this year are Lew and

Muriel Welch and Mike and Barbara Hodom.

Parents who attend the organizational meeting will be asked to sign up for the different committees. Seniors are also welcome to attend the meeting.

**Hilchies
Servi Star**
is the place to
rent a
POWER RAKE
235 Delaware Ave.

Violins Repaired
Bows Rehalred
Tennis Rackets
Restrung & Regripped

C.M. LACY
3 Becker Terrace • 439-3739

Let us
dress you
for
EASTER
Sizes 8 to 20
Half-sizes, too

*Dorothy
Lynn*

282 Delaware Ave.
Delmar • 439-4101
Tues.-Sat. 9-5:30

**USED
SAABS**

'80 LEFTOVERS

- 1 - Used '79 Turbo
- '79 Saab EMS
- '79 Saab 4-door
- '75 Saab 2-door, auto.
- '78 & '79 Subaru 4-wheel drive
- '79 & '80 Saab company cars
- '78 Subaru 2-door

LEASING
available on new cars.

Area's oldest and largest
Dealer — with complete
Parts Dept. & SERVICE!

TEST DRIVE A SAAB
AT

**New Salem
Garage** SAAB INC.
NEW SALEM, N.Y.
765-2702

**Armstrong
Solarian Sale**

Solarian Supreme
"Factory OK" Irregulars **53% off**

Last 3 days — Sale ends 4/11

Decorative
Products

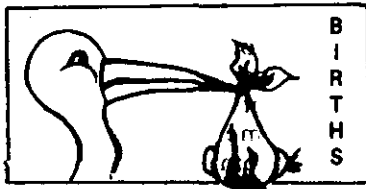
340 Delaware Ave.
Delmar, N.Y. 12054
(518) 439-9385

**FURNITURE
LOOKSAD?** ☹️

Find out what a new slip cover will do. Put on a happy face
😊 with our new collection of Waverly fabrics, guaranteed
to light up your life.

Call us now for **FREE** shop-at-home service and save
20%. FREE arm sleeves with every cover. Call now.

DELMAR DECORATORS
Delmar 439-4130



St. Peter's Hospital

Boy, Patrick, to Mr. and Mrs. William A. St. Dennis, Voorheesville, March 4.
 Boy, Patrick, to Mr. and Mrs. Brian Hoogkamp, Slingerlands, March 2.
 Boy, Joseph, to Mr. and Mrs. Joseph Pierle, Slingerlands, March 4.
 Boy, Joshua, to Mr. and Mrs. Robert W. Weddell, Selkirk, March 5.
 Girl, Elizabeth Ann, to Mr. and Mrs. John E. Dahne, Delmar, March 6.
 Boy, Jason, to Mr. and Mrs. Daniel Ross Wood, Selkirk, Feb. 22.
 Boy, Matthew, to Mr. and Mrs. Mark Brattrud, Delmar, Feb. 25.

Boy, Zachary, to Mr. and Mrs. James H. Bohl, Jr., Selkirk, Feb. 26.
 Girl, Kassi, to Mr. and Mrs. Scott E. Neal, Voorheesville, March 1.
 Girl, Laura, to Mr. and Mrs. Daniel J. Berman, Delmar, Feb. 9.
 Girl, Megan, to Mr. and Mrs. Joseph Bernier, Delmar, Feb. 24.
 Girl, Chelsea, to Mr. and Mrs. Gary Merritt, Delmar, March 17.
 Boy, Joshua, to Mr. and Mrs. Peter D. Myer, Delmar, March 18.
 Girl, Laura, to Mr. and Mrs. Daniel J. Ryan, Selkirk, March 20.
 Girl, Melissa, to Mr. and Mrs. Joseph M. Burns, Selkirk, March 21.
 Boy, Michael, to Mr. and Mrs. Charles Eric Riedel, Delmar, March 23.
 Boy, Brian, to Mr. and

Mrs. Gary L. Washburn, Sr., Voorheesville, March 17.

Albany Medical Center

Boy, James Edward, to Mr. and Mrs. Thomas W. Corrigan, Delmar, March 6.
 Girl, Jessica Lynne, to Chris Williamson and Glenn Storm, Selkirk, March 5.
 Boy, Evan Joseph, to Mr. and Mrs. James B. McQuide, Delmar, March 13.
 Girl, Jennifer Alicia, to Mr. and Mrs. William Leary, Delmar, March 16.
 Girl, Maria Elizabeth, to Mr. and Mrs. Henry J. Rauche, Jr., Glenmont, March 16.
 Girl, Sarah Jane, to Mr. and Mrs. Paul Sterling, Voorheesville, March 18.
 Girl, Amy Lee, to Mr. and Mrs. Joseph Adams, Cedar Hill, March 2.
 Boy, Gordon Edward, to Jon Ryan and Tamy Slaver, Selkirk, March 3.

hem Middle School on Saturday, April 11, at 1 p.m. Questions will be asked of the teams based on a selected list, distributed last June, of 100 books. Iris Dagostino, children's librarian at the library, will serve as interlocuter for the "college bowl" type battle.

Representing St. Thomas School will be 6th grader David Comi, 7th grader Tricia Weber and 8th grader Anne Comi. Alternates are Kay Lynn Romanski and Lawrence Barker, both 7th graders, and Susan Donovan, a 6th grader. The Middle School will be represented by 7th grader Melinda Haven and two 6th graders, Laurie Alexander and Janet Nathan. Alternates are Rachel King, an 8th grader, and Ben Rosenthal, a 6th grader. A plaque will be awarded to the winning school.

Granted tenure

Sandra Peterson-Hardt of Slingerlands, a member of the sociology faculty at Russell Sage College, Troy, is one of three members of the teaching staff granted tenure.

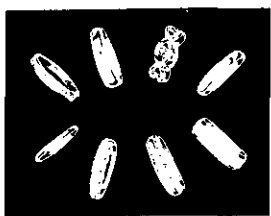
'Battle of the Books'

Bethlehem Library will be the scene of the third annual Battle of the Books between teams representing St. Thomas School and Bethle-



SHUTTLE HILL HERB SHOP
EASTER CARDS & GIFTS
HERB PLANTS and seeds
243 Delaware Ave., Delmar


At Adams Downtown Albany



For the 1980 Bride

New designs in 14 and 18 karat gold wedding rings as well as traditional plain bands in varied widths for bride and groom.


No need to buy from strangers, we've been here half a century.



MEMBER
**AMERICAN
 GEM SOCIETY**

Adams
 Registered Jeweler

JEWELERS—SILVERSMITHS
 Corner North Pearl & Steuben Sts.
 Downtown Albany



APPLIANCE SERVICE CO.

456-2079 439-9705

A Division of
 Mr. Macs Appliance, Inc.

BILL McGARRY

Northeast Framing
Framing with Flair



Visit us in our new, visible location:
243 Delaware Ave.

439-7913

Open Monday through Friday 10 a.m. to 5 p.m.
 Saturday 10 a.m. to 4 p.m.

LEGAL NOTICE

NOTICE OF PUBLIC HEARING
 NOTICE IS HEREBY GIVEN that the Board of Appeals of the Town of Bethlehem, Albany County, New York will hold a public hearing on Wednesday, April 15, 1981 at 8:00 p.m. at the Town Offices, 445 Delaware Avenue, Delmar, New York to take action on application of the Estate of Alton C. Rowe, Jr., c/o Francis T. Roach, Esq., 50 Colvin Avenue, Albany, New York 12206 for a

LEGAL NOTICE

Variance under Articles IX (Housing Density), Article X (Width of Lot) and Article XII (Side Yard) of the Bethlehem Town Zoning Ordinance to permit the division of property located at Borthwick and Kenwood Avenues, Delmar, Town of Bethlehem.

CHARLES B. FRITTS
 Chairman
 Board of Appeals
 (April 9)

LEGAL NOTICE

NOTICE OF PUBLIC HEARING
 NOTICE IS HEREBY GIVEN that the Board of Appeals of the Town of Bethlehem, Albany County, New York will hold a public hearing on Wednesday, April 15, 1981 at 8:30 p.m. at the Town Offices, 445 Delaware Avenue, Delmar, New York to take action on application of James Blendell, 1 Grove Street, Delmar, New York for a Variance under Article XIII, Rear Yard, of the Bethlehem Town Zoning Ordinance to permit the construction of a 6 foot fence at premises, 1 Grove Street, Delmar, Town of Bethlehem.

CHARLES B. FRITTS
 Chairman
 Board of Appeals
 (April 9)

LEGAL NOTICE

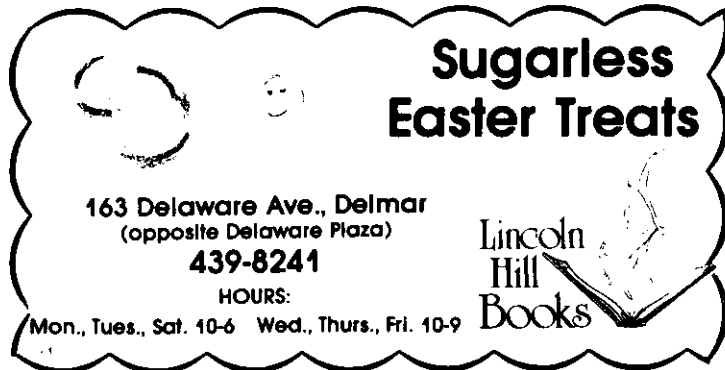
of W. Scott Prothero, 6 Lincoln Avenue, Delmar, New York for a Variance under Article XII, Side Yard, of the Bethlehem Town Zoning Ordinance to permit the construction of a six (6) foot fence at premises, 6 Lincoln Avenue, Delmar, Town of Bethlehem.

CHARLES B. FRITTS
 Chairman
 Board of Appeals
 (April 9)

Bald eagle savior

Peter Nye, head of the endangered species unit of the New York State Department of Environmental Conservation, has been named 1981 Bald Eagle Person of the Year by Eagle Valley Environmentalists. The award is presented annually to recognize scientists and conservationists whose efforts have helped preserve the bald eagle from extinction.

Nye, who works out of Encon's Wildlife Resources Center in Delmar, was recognized for his pioneering work as coordinator of New York's program to restore a breeding population of bald eagles to the state.



**Sugarless
Easter Treats**

163 Delaware Ave., Delmar
 (opposite Delaware Plaza)
439-8241

HOURS:
 Mon., Tues., Sat. 10-6 Wed., Thurs., Fri. 10-9

Lincoln Hill Books

NOTICE OF PUBLIC HEARING
 NOTICE IS HEREBY GIVEN that the Board of Appeals of the Town of Bethlehem, Albany County, New York will hold a public hearing on Wednesday, April 15, 1981 at 8:45 p.m. at the Town Offices, 445 Delaware Avenue, Delmar, New York to take action on application

Palm Sunday Open House
 April 12th, 12-4 p.m.
 Cash and Carry Specials for Our
 Open House Guests:

*The "Mother and Daughter
 Two-4-One"*
 (Order Mom's Easter Corsage
 and get one daughter's corsage
 free with order)

10% Cash and Carry Discount
Storewide Palm Sunday Only
 (Not applicable to specials —
 purchases may be picked up
 later in the week, if desired)

*Give From Our Beautiful Selection of Fresh and Silk Easter
 Arrangements, Flowering or Green Plants, and Corsages.*

Easter Fruit Baskets Are Our Specialty!

Flowers By Wire

1974 New Scotland Road, Telephone
 Slingerlands, NY 12159 439-0300
 200 ft. from junction of 85 & 85A Mon.-Sat. 9 to 5



**Spring Into Action
 With This Special**

\$2 Coupon \$2
 Two Dollars Off on any
 \$10 or more purchase.
 (Expires 4/30/81)

**WINDOW GLASS
 PLATE GLASS
 MIRRORS
 AUTO GLASS**

- cut to any size
- storm and screen replacement
- patio doors
- insulated glass
- aluminum doors
- most chipped crystal repaired
- table tops
- store fronts
- stained-glass & supplies
- door closer repair
- torn screens

DAVE'S GLASS CO.
 154B Delaware Ave.
 Delmar
439-7142

Mini-Mall Behind Denby's and OTB
 Residence 765-4715

Candice Bergen — Speaks Out on Weight Training



"I have become convinced that weightlifting and weight training are very good for you . . . for your body and toning . . . for rejuvenation and good looks . . . and for the psychological lift it gives you. It has a lot to offer women . . . all kinds of women — Just don't keep putting it off, as I did."

Don't "Weight"
 Any Longer — As Candice Did!

Start Your Shape Up Program Now!



154-B Delaware Ave.

439-2778

CLASSIFIEDS

Minimum \$3.00 for 10 words, 25 cents each additional word, payable in advance before 4 p.m. Friday for publication the following Thursday. Submit in person or by mail with check or money order to 414 Kenwood Ave., Delmar 12054

439-4949

439-4949

AIR CONDITIONING

Be prepared for summer! 
Let us clean and inspect your window air-conditioning units. All makes and models pick up & delivery available.
James Cooke
356-1607 • 765-4190

Carrier

ANTIQUES

 **ANTIQUES**
For Over 35 Years
Bought & Sold
APPRAISALS
Sterling & Plated
To Update Your
Fire & Theft Policy
Jeanne Van Hoesen
439-1021
67 Adams Place, Del., N.Y.

Period Furniture Country Pine
Shaker Furniture Lighting

ANTIQUES at the TOLLGATE

1569 New Scotland Rd.
Slingerlands
439-6671

Hours:
Mon.-Sat. 11:00-5:30 p.m.
Sun. 1:00-5:00 p.m.

We Buy and Sell
Quality Antiques

Cut & Pressed Glass Primitives
Victoriana Quilts

Sue Zick Interiors

WANTED

Old & New Tools

Call

 **Pete Williams**
(518)462-6882

ANTIQUES

WE BUY WE SELL ANTIQUES

Good Used Furniture
FAIR PRICES PAID

BILL 'N' LOU'S ANTIQUES

439-2507 • 439-1388

Closed Sunday & Monday

ANTIQUE EXCHANGE

Antiques & Collectibles

Bought & Sold

439-7715

154 Delaware Ave.
Behind Denby's




The Unicorn 
439-0002

2100 New Scotland Rd.
Route 85, New Scotland

ANTIQUES

Buy • Sell

FURNITURE OF YESTERYEAR

Visa Fri. & Sun. 12-5
Sat. 10-5 

Delmar Antiques

We buy and sell
Furniture, rugs, china,
mahogany clocks, etc.
Buying: wicker in any condition.
Buying: sterling, class rings,
gold, jewelry, and coins.

439-8586/482-3892

Mon.-Fri. 12-5
Sat. 10-5 or by appt.

449 Delaware Ave.

ANTIQUES

The Bird Cage

Victoria A. Seymour 439-5309
Nancy T. Steele 439-5189

Friday evening 7:00-9:00
Saturday 10:00-4:00
Sunday 1:00-4:00
or by appointment

1926 New Scotland Rd.
Slingerlands, NY 12159

TOYS WANTED

1960's & before
 **CALL Art Eves. 439-5994**

APPLIANCE SERVICE

Appliances Serviced

Reasonable Rates
35 Years Experience

Tri-Village Appliance Service
439-9582

AUTOMOTIVE FOR SALE

'67 HOLIDAY VACATIONER travel trailer. Self-contained, good cond. 439-3677.

'74 OLDS VISTA Cruiser wagon mechanically excellent, all options, best offer. 439-0614.

1966 GRAND PRIX Pontiac, excellent running condition, \$400. 463-7629.

AUTO REPAIR

AUTO BODY SHOP

Hilltowns Sales & Service
COMPLETE BODY & FENDER REPAIRS

HOWARD HURLEY
4222 Elm Dr., East Berne

(off Pinnacle Rd. Helderberg Lake area)

CALL 872-1805
(Satisfaction Guaranteed)

AUTO REPAIR

Auto Collision Specialists

Quality Work at Fair Prices

"Try us-You won't regret it!"

Rt. 9W 462-3977
Glenmont or 439-9175
Open 6 Days

BATHROOMS

BATHROOM NEED WORK? Dirty joints? Loose tile? Leaks when showering? Call Fred. 462-1256. 8T122

BLACKTOP

Our Prices Are Reasonable

LIUZZI BROS.

Blacktop Specialists

Residential. Commercial
Industrial — Fully Insured

482-8954

Also Gilsonite or
Jennite. J-16 Sealer

SATISFIED CUSTOMERS ARE OUR BEST RECOMMENDATIONS

BLACKTOP

paving by
C. Macri & Sons

Driveways
Parking Lots
Complete
Tennis Courts

Also Seal Coating

Free Estimates

Call Delmar
439-7801

CAKES



Beautiful Cakes

All Occasions
Weddings. Showers.
Birthdays. Religious.
Anniv., Graduation.

Joan Adams
439-7247

CARPENTRY

CARPENTRY of all types. William Stannard, 768-2893.

FRANK'S Carpentry Service

Ceilings - Paneling - Stairs
Windows - Decks - Planters
Bookcases - Repair Work
767-9460

CONSTRUCTION

W.D.Z. BULLDOZING BACKHOEING

SITE CLEARING
GRADING & FINISHING
Fill • Topsoil • Gravel • Stone

439-7595 evenings
Commercial / Residential

FERTILIZER

GIVE YOUR GARDEN a natural boost. Increase the soil's organic matter and fertilize it with decomposed cow manure. A full pickup load delivered, \$25. 767-2252. 2T49

FIREWOOD

WOOD SPLITTING. We do it for you, by the job. Call Jim Haslam, 439-9702. 4T423

GREENWOOD, 3 full cord truck load, \$180 plus 2% tax. **John B. Geurtze, Jr.** 872-2078. TF

SEASONED FIREWOOD. Cut, split, delivered, STACKED \$40 face cord, \$110 full cord, plus 2% tax. 872-2078 eves. **JOHN B. GEURTZE, JR.** TF

FIREWOOD DELIVERED

Green Hardwood • \$80/full cord
Cut and Split 4x4x8

Seasoned Wood & 4 ft. lengths
Also available

Randy Bates • after 5. 797-3215

FURN. REPAIR/REFIN.

UPHOLSTERY REPAIRS at home. Loose buttons, springs, cushions refilled, etc. Call 439-4130. TF

Heritage Woodwork

Specializing in Antiques and Fine Woodworking
FURNITURE
Restored • Repaired • Refinished
Custom Furniture • Designed Built
Bob Puffer — 439-6165

ANTIQUE OR MODERN FURNITURE REPAIR SERVICE
Repairing • Refinishing
ROBERT ROTUNDO
154-B Delaware Ave., Elsmere
Phone 439-7700

GARAGE SALE

MOVING! Garage sale Sat., April 11, 9-4, Sun., April 12, 10-2, 14 and 15 Roweland Ave., Delmar. GM Love Seats, stereo, TV, bicycles, much more.

187 ADAMS ST. April 9-11, 10-4:00. books, small appliances, glassware, cookware, furs, pictures, misc.

Multi-Family Garage Sale

Saturday, April 11
9 a.m. - 3 p.m.
20 Longwood Drive, Delmar

Furniture, Collectibles, Miscellaneous

GLASS

DAVES GLASS COMPANY

154B Delaware Ave.
(behind Denby's)
mirrors • tabletops
auto glass • stained
glass & supplies

Broken Window? Torn Screen? WE FIX 'EM!

Roger Smith's
**Decorative
Products Co.**
340 Delaware Ave.
439-9385

HARDWARE

LAWN-BOY

Authorized
Sales — Service
Parts & Accessories
Prompt Reliable Service
We only service
LAWN-BOY

Brins Hardware

444 Delaware Ave.
Albany, N.Y. **462-4236**
(Cor. Whitehall Rd. & Second Ave.)

HELP WANTED

NEED BABYSITTER in my or your Selkirk home, Monday through Friday, 7:30 a.m.-5:30 p.m. Call after 6 p.m. 439-8252

CLEANING PERSON needed, Sundays for about 4-5 hours every week. Call weekdays after 6 p.m., 439-1606. Reference requested.

HELP WANTED

PART-TIME SALES HELP—Flair for home decorating. Flexible hours. Lamphouse, 2 Grove St., Delmar, 439-7258.

HAIRDRESSER and/or booth rental. Leonardo Hair Designers, new location, 412 Kenwood Ave. Available 5/5/81, 439-6066. 4T423

HOUSEKEEPER, child care part-time, boy 4 yrs. old, two or three afternoons a week, must have own transportation, ref. Send resume to Dept. H, c/o Spotlight, P.O. Box 152, Delmar, N.Y. 12054. 3T423

COMPANION/HOMEMAKER for elderly gentleman. Live in/out, own room. References requested. Reply Dept. "C," c/o Spotlight, Box 152, Delmar, N.Y. 12054.

BABYSITTER, part-time, 2 days per week, 9-month-old boy, your home. 439-6164.

PART-TIME. 9-1 p.m. Secretarial duties. Call for interview, 439-9958.

MATURE, RELIABLE woman to live in, and assist with home-making and child care. References, please. 439-2184.

Help Wanted

WOULD YOU LIKE A PART-TIME JOB NEAR DELAWARE PLAZA?

WE HAVE THE NEED FOR AN INDIVIDUAL TO WORK THREE - FOUR HOURS A DAY PRIMARILY AS A YEAR ROUND GROUNDS-KEEPER WITH SOME LIGHT MAINTENANCE INVOLVED.

IF YOU ARE INTERESTED PLEASE SEND A BRIEF HISTORY TO DEPT. G., SPOTLIGHT, BOX 152 DELMAR, NY 12054.

HOME IMPROVEMENT

Call
STEVE HOTALING

The Handy Man

Home Repairs
Remodeling
Interior-Exterior
Painting
Aluminum Doors
and Windows

439-9026

HOME IMPROVEMENT

Exterior Remodeling

Roofing • Repair
Painting • Siding
FREE ESTIMATES
463-4925

Home Improvement ALL TYPES

Floors—Walls—Ceilings
Painting—Lt. Trucking—Removal
FREE Estimates
732-2137 or 436-7995

HOME REMODELING

Indoor and Outdoor •
Kitchens to Baths
ADDITIONS •
Siding • Roofing

25 YEARS DELMAR BUILDER
Call **Bill Zautner**
439-5696

**A.T. ZAUTNER
& SON, INC.**

INTERIOR DECORATING

DELMAR DECORATORS SAVE UP TO 20%

Slipcovers, Draperies,
Table Pads, Bedspreads,
Wood & Cloth Shades
Delmar • **439-4130**



Beautiful WINDOWS

by Barbara
Draperies,
Bedspreads
your fabric or mine
Estimates
872-0897

JEWELRY

EXPERT WATCH AND JEWELRY REPAIRS. Diamond settings, engraved wedding and engagement rings, reasonable. Your trusted jeweler, LeWanda, Delaware Plaza Shopping Center, 439-9665. TF

LAMP REPAIR

LAMP PARTS & REPAIRS

Free Estimates
LAMPHOUSE
Behind Delmar's P.O.
439-7258 • M-S 10-5:30

LAWN & GARDEN

LANDSCAPING/SPRING CLEANUP. Fertilizing, mowing. Seasonal program. New lawn construction. Lawn renovation. Jim Busick, 439-5286 after 5. 5T430

HOME GARDENS roto tilled. Reasonable. Call Dick Everleth, 439-1450. 10T528

LAWNS MOWED/YARD WORK. Reliable, dependable. Call Tim, 439-6056, after 5 p.m.

SWEET CORN. RIPE TOMATOES. They're great, especially when YOU grow them. Delmar garden plots for rent. Convenient to town pool. 439-0345.

P. Vasto
Garden
Roto-Tilling
Free Estimates
756-2634

Trees & Things, Inc.
• Landscape Design
• Construction
• Maintenance
Clarksville, N.Y. 783-6527

TOPSOIL
CEDAR HILL TRUCKING
Cedar Hill, Selkirk
767-9608 767-2862

SPRING CLEAN-UP
FREE Pick up of
Junk Appliances
Washers-Dryers-Ranges
Refrigerators-Freezers
Lawn Mowers
Cash Paid for
Good Used Appliances
BOB'S
Equipment Co.
449-5821/439-7143

VAN WORMER ENTERPRISES
Lawn Mowing Maintenance
Spring Clean up
Damaged Lawns Repaired
Season Contracts Available
Fertilizing—Seeding
Emergency Tree Removal
439-4683

LAWN & GARDEN**HORTICULTURE UNLIMITED**

- Spring Cleanup
- Natural Landscaping
- Nursery Stock
- Flowers
- Lawn Mowing
- Guaranteed Planting

"It's Only Natural!"

BRIAN HERRINGTON
482-2678

M & M

Tree & Lawn Service
Spring Clean-up

- Lawn Mowing & Repair •
- Shrub & Hedge Trimming —
- Tree Spraying, Trimming Removal •

768-2805

MASONRY

MASONRY of all types. William Stannard, 768-2893. TF

ALL TYPES MASONRY NEW — REPAIRS

26 Years Experience
Chimneys, Fireplaces, Stoops, Walks,
Foundation Repairs, Waterproofing
PROFESSIONAL WORK WITH INTEGRITY
Serving this community for years
with Pride—Satisfaction Guaranteed
F. JOSEPH GUIDARA
439-1763, evenings

MISC. FOR SALE

DINING ROOM SET, antique, mixed, china cabinet, buffet, 6 chairs, antique gilt mirror, \$450. 765-4605. 2T416

SELLING brown 85" sofa, club-style, custom crafted. Excellent condition, \$200. Phone 459-5808 after 5 p.m. weekdays, available weekends.

ROYAL electric office typewriter, \$75. 439-9921.

BIKE, girl's Rollfast, 20", dark green, super condition, \$35. 439-7364.

CHEST FREEZER, 20 cu. ft., 5 years old, \$225. 765-2144.

TV's, 2 small 12" portables, good, \$25 each. 439-0614.

SEWING MACHINES, new, used, rebuilt. Singers, whites, Necchi, Pfaff, over 50 in stock. All guaranteed. Albany Sewing Center, 25 Ontario Street, Albany, 462-1802.

MISC. FOR SALE

WEDDING PHOTOGRAPHY and wedding invitations. Call L. Spelich, photographer, 439-5390.

SEWING MACHINE Industrial, new and rebuilt. Albany Sewing Center, 25 Ontario Street, Albany 462-1802.

FIRESTONE Deluxe Champion Belted L-78-15; two rims for front wheel drive El Dorado and or Toronado. 439-6204.

AIR CONDITIONER, Fedders Window Unit, 6000 BTU. Ladys Beginner golf set 4I, 2W, small cart good cond. \$35.00. 439-7282.

FOR SALE: 78" Teak Dresser; 439-1814 after 5:30 p.m.

GUITAR - almost new. Hondo II Price \$90. Call 439-4088.

PASSPORT AND ID PHOTOS. Ready in minutes. Call L. Spelich. Phone 439-5390. TF

Bermuda Bags**BEST SELECTION**

No store has a greater selection of Bermuda Bags and Covers than

CASUAL SET
of Stuyvesant Plaza

MUSIC

PIANO LESSONS. All ages, levels, adult beginners. MA degree. Sandra Zarr, 767-9728 (Glenmont). 24T618

NURSES

TRI-VILLAGE PROFESSIONAL NURSES, now available for home care. 439-9410, 767-9137. 6T430

PAINTING & PAPERHANGING**R. E. O. PAINTING**

Exterior/Interior
Free Estimates
Insured Guarantee

RICHARD OLDREIK 439-2907

S & M PAINTING

Interior & Exterior
Wallpapering — Painting
FREE ESTIMATES
INSURED • WORK GUARANTEED
439-5592 after 5 p.m.

College Painters

Interior/Exterior
Insured — Free Estimates

Bruce Yelich
Joe Cannizzaro
439-6805 After 5 p.m.

PAINTING & PAPERHANGING

THE HAPPY PAINTERS. Interior/- exterior. Insured. Delmar references. Al Bradt, 439-9729; John Toohey, 765-2737. 5T430

RUSS McCURDY & SON PAINTING CONTRACTOR

INTERIOR • EXTERIOR
PAPERHANGING
FREE ESTIMATES
INSURED • 439-7124

VOGEL Painting Contractor

Free Estimates

- RESIDENTIAL SPECIALIST
- COMMERCIAL SPRAYING
- WALLPAPER APPLIED
- DRY WALL TAPING

Interior — Exterior
INSURED

439-7922 439-5736

D.L. CHASE

Painting Contractor

Residential Specialists

Complete home repair
and maintenance services
768-2069

PETS

CAT HAVEN

FOR CATS ONLY Reservations Required
— Individual Care in Private Home —
ETHEL FAY 765-2715



BLUEACRE KENNELS

Boarding — Grooming
Training

Quality Dog Food
• PET SUPPLIES
Complete Line

— Free Delivery —
Yvette Neary 439-6226

In Elsmere, the *Spotlight* is sold at the Paper Mill, Plaza Pharmacy, Johnson's Stationery, Cumberland Farms, and Mul-len's Pharmacy.

PETS

GIVE YOUR BEST FRIEND
A SPECIAL TREAT FROM
MARJEM KENNELS

APRIL
BATH SPECIAL
\$6.95

GROOMING of all BREEDS

Boarding • Pet Supplies • Dog Food
Pet Sitting • Labrador Retrievers
Open 7 Days A Week • Senior Citizens Discount

767-9718

Rt. 9W, Glenmont, NY

Carl & Peggy Barkman

PETS

ROOFING

For a FREE Estimate on



Cyrus Shelhamer Roofing

- SNOW SLIDES
- GUTTERS
- TRAILER ROOFS

INSURED
REFERENCES
756-9386

SOLAR HEAT



SOLARSENSE UNLIMITED

- Solar energy evaluations
- Solar domestic hot water
- Solar space heat
- Solar greenhouses
- Attractive and custom designed applications

"Solar turns sense into savings"

768-2169

PLUMBING & HEATING

Home Plumbing Repair Work
Bethlehem Area

Call JIM for all your plumbing problems

Free Estimates • Reasonable Rates

439-2108

PRINTING

PRINTING—need brochures, programs, letterheads, cards? Gary VanDerLinden and George Bloodgood at the Spotlight are ready to handle all your printing needs. 439-4949 or 439-0360.

RESORTS

PUERTO RICO

Easter - Spring

FOR RENT

By Week or Month

Two Bedroom A C

Beachfront Apt.

Sleeps Six

Reasonable Rates

CALL 371-8243

eves.



SIDING

Dick Domermuth and Sons
SIDING & TRIM

Our Only Business
— Free Estimates —

768-2429



L.S. Ferguson Plumbing and Heating

24 Years Experience

765-2990 days

or **1-868-2502**

anytime

Get An Expert
This Time

ROOFING

VANCANS ROOFING

New Roofs,
Repairs and
Slate Work



Free Estimates — Insured
Slingerlands 439-3541

SITUATIONS WANTED

HOUSECLEANING, experienced, good references, available week days. Call after 4 p.m., 439-7273. 2T49

HOUSECLEANING, experienced and dependable. Own transportation. References. 797-3446. 2T49

HOUSECLEANING jobs wanted, experienced, hard working and reliable, own transportation. 797-3172.

HUSBAND wants painting jobs, experienced, low rates; wife wants cleaning jobs, 439-4212 between 12 and 6.

EXP. student seeks yard work after school and weekends. 439-6759.

Can't decide
who to call
to do your
ROOF?



Why not call the company
where superior workmanship
still means something?

VANGUARD ROOFING CO.

Free Estimates—Fully Insured

Call **JAMES S. STAATS**
767-2712

Bob McDonald

ENTERPRISES

Check List

- Leaky Faucet
- Clogged Drain
- Water Closet
- Keeps Running
- Water Heater Leaking
- Sump Pump Doesn't Work
- Need a Dish Washer Installed
- Tired of Outrageous Plumbing Bills

for fast, reliable,
reasonable service **756-2738**

In *Setirk*, the *Spotlight* is sold at
the Convenient Food Mart.

TABLE PADS

TABLE PADS, blinds, window shades, made to order. Free estimates. Call **DELMAR DECORATORS**, 439-4130. TF

TAX SERVICE
INCOME TAX RETURNS. Eves, weekends. Voorheesville. 765-2972.

TRAVEL
MYERS TRAVEL
 Delmar's only airline approved travel agent
 210 DELAWARE AVE.
 439-7671
 37 N. PEARL ST.
 434-4131

TREE SERVICE
HERM'S TREE SERVICE, Call IV2-5231 TF
REAGAN'S TREE SERVICE removal, trimming, stump removal. Emergency service. Insured. 439-5052 TF

CONCORD TREE SERVICE

 Spraying for insect & disease control
 • REMOVAL
 • PRUNING
 • CABLING
 • 24 Hr. Emergency Service
 Free Estimates - Fully Insured
439-7365
 (Residential • Commercial • Industrial)

WANTED
 I BUY old photos, cameras, radios, toys, postcards. 439-5994 eves. 4T49

HO TRAINS, also accessories and structures. If your son has outgrown them, unpack that box and call 768-2695. 3T219

WE BUY JUNK CARS. Call for price. Joe Messina's Garage Rte. 9W, Selkirk 767-9971 22T1016

COLLECTOR seeking old Lionel Am. Flyer, Ives, Maerklin trains Call 463-4988. TF

BUSINESS OPPORTUNITY

BUSINESS OPPORTUNITY
 Retail sales area in established Delmar shop. Prefer quilting, fabrics and accessories. Capital for stock required.
 Write Dept. H, Spotlight, P.O. Box 152 Delmar, NY 12054

WOOL

MEIKLEKNOX FARMS
FINE WOOL
NATURAL COLORS
 Herbal Mothchaser Material Custom knitting occasionally available
M. BROWNE
BOX 206
BERNE, N.Y. 12023
(518) 872-1641 • 439-9090

REAL ESTATE FOR RENT

\$260, plus utilities. Delmar, 2nd floor; LR, DR, kit., 2 BR's, garage, yard. Avail. May 1. Call 465-7501 days, 439-9232 eves., weekends. 2T416
OFFICE for rent, 23x14, 257 Delaware Ave., Elsmere. 439-2613 TF

OFFICE/RETAIL SPACE for rent, up to 1,000 sq. ft. Spotlight Building (formerly Town of Bethlehem Coffee House), Delmar. 439-4949.

1 BEDROOM APT. available May 15, utilities included, ½ mile from bus line. Call 439-3862 evenings.

APARTMENT, 3 rooms, heated, garage, mature business woman preferred, no pets. 439-1030.


OFFICE SPACE available in heart of Delmar. Up to 4,000 Sq. Ft. Will subdivide and renovate to suit tenant. Call 439-4432 or 439-9631.

For Rent —
Delmar Office Space
 800 sq. ft. at 264 Delaware Ave. ample parking - ideal for professional office. Available immediately. Call Fred or Bill Weber. 439-9921

DELMAR RENTAL

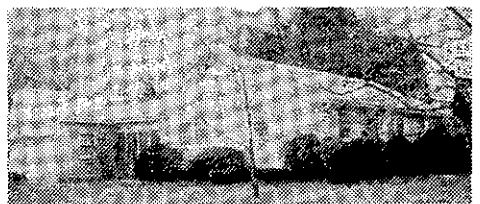

Beautifully decorated 3 bedroom, 1½ bath home in excellent area with new Woodmode Kitchen, fireplace and 1 car garage.
 Included: washer and dryer, window drapes, curtains, all new kitchen appliances.
 \$525.00 lease, security. Available May 1st.
 Call M. Bennett
Picotte Real Estate, Inc.
439-4943


In Clarksville, the *Spotlight* is sold at Clarksville Supermart.

REAL ESTATE DIRECTORY

 Local ERA
JOHN J. HEALY REALTORS
 361 Delaware Ave.
 439-7615
PICOTTE REALTY INC.
 205 Delaware Ave.
 439-4943

In Elsmere, the *Spotlight* is sold at the Paper Mill, Plaza Pharmacy, Johnson's Stationery, Cumberland Farms, and Mullen's Pharmacy.

REAL ESTATE FOR SALE

Delmar

 Lots of privacy in this custom built three bedroom Ranch on a corner lot in one of Delmar's most desirable neighborhoods. Gas heat with central air, plus plush wall to wall carpeting. \$69,500. Call 456-5101.
CYC Realty, Inc.



 Quality Geurtze-built Colonial, nestled on wooded corner lot of dead-end street. 4 bedrooms, 1½ baths, large living room with fireplace and library wall. Eat-in kitchen, formal dining room, finished playroom, breezeway, brick patio and 2-car garage. Excellent location, close to bus line.
 — By Appointment Only —
7 Woodridge Rd., Delmar, NY • 439-9517
 Sale by owner—\$74,800
 8½% Assumable Mortgage—No Agents
 Note: Spotlight regrets price error in 4/2/81 issue

CLASSIFIED NOTICE
 We regret that recent increases in printing and postal costs make it necessary to adjust classified rates beginning with the issue of Thursday, April 16th to \$3 minimum for 10 words and 25 cents for each additional word.

CLASSIFIED AD POLICY
 Classified advertisements in the Spotlight must be paid for when submitted. We must enforce this strictly, our rates are too small to permit invoicing and bookkeeping for classifieds. Please do not ask us to make exceptions. Copy and remittance must reach us before 4:30 p.m. Friday for publication in the following Thursday issue.

CLASSIFIED ADVERTISING RATES
 Minimum \$3.00 for 10 words
 25 cents each additional word.
Call 439-4949
 or write or stop in
 at our convenient office
414 Kenwood Ave., Delmar
 Why don't YOU subscribe to
THE SPOTLIGHT?



Dean's List

Skidmore College — Laura J. Hartheimer, Slingerlands (highest honors, fall term), Charmaine A. Tocci, Delmar.

University of Hartford — Ruth Leighton, Leslie Matthews, Delmar.

SUNY-Delhi — Timothy Colitsas, Michael J. Ganley, Cinty A. Junco, Delmar.

Paul Smith's College — Richard Coote, Nantucket, Mass., recently of Slingerlands.

Middlebury College — Krosten A. Reinhardt, Delmar.

Hudson Valley Community College — Robert Keefe, Robert Marshman, Bruce Schwartzman, Marla Tamburro, Glenmont; John Geel, Feura Bush; Daniel Cassidy, Nancy Dowd, Kyle Goodrich, Barbara Mc-Bourne, Jonathan Moak, Michael Soellar, Mary Touhey, Delmar; Thomas Burnett, Linda James, Cheryl Furbeck, Slingerlands.

Emerson College — Catharine Jones, Delmar.

Bryant College — Frederick Craig Lotz, James William Smart, Delmar.

SUNY-Plattsburgh — Jane Rathjens, Delmar.

Norwich University — Randy J. Grenier, Delmar.

Syracuse University — Laurie A. Bosworth, Delmar.

Russell Sage College — Christine Adams, Patricia Terry, Delmar.

DeVry Institute of Technology, Phoenix, Ariz. — Steven R. Young, Delmar.

SUNY-Utica-Rome — Nancy J. Davis.

In Voorheesville, the *Spotlight* is sold at the Grand Union and Voorheesville Pharmacy



THE COMPLETE FUEL SERVICE

FUEL OIL • KEROSENE GASOLINE • DIESEL

INSTALLATION OF HEATING AND AIR CONDITIONING SYSTEMS

MAIN-CARE HEATING SERVICE

The Company to have in your home ... all year round.

318 Delaware Ave., Delmar • 24-Hour Service • 439-7605

Spotlight Classifieds Work! WRITE YOUR OWN!

Minimum \$3.00 for 10 words, 25 cents each additional word. Phone number counts as one word.

DEADLINE 4 P.M. EACH FRIDAY

- MISC. FOR SALE
- HELP WANTED
- SITUATIONS WANTED
- REAL ESTATE FOR SALE
- REAL ESTATE FOR RENT

I enclose \$ _____ for _____ words

Name _____

Address _____

Phone _____

MAIL TO: Spotlight, P.O. Box 152, Delmar, N.Y. 12054
OR BRING TO: Spotlight, 414 Kenwood Ave., Delmar, N.Y.

anything or everything

That's right, you can sell a personal or household item or the entire household if you wish by placing one ad in the Classifieds. Thousands of eager customers read The Spotlight Classifieds. It is a treasure for budget-minded buyers. Let us help you write a clever ad and just listen to your phone ring.

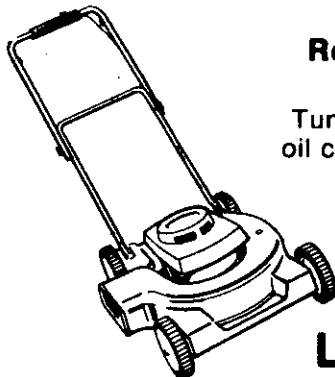
439-4949

The Spotlight

414 Kenwood Av.
Delmar, NY 12054



SPRING TUNE-UP SPECIAL



Rotary Lawn Mowers thru 22" cut

Tune-up, blade sharpening, oil change & new spark plug.

only \$14.95

Free pick-up and delivery in the Tri-Village area.

L.C. SMITH

Lawn and Garden Equipment

154-B Delaware Ave., Delmar
(next to Delaware Plaza)

439-9746

Vox Pop

Vox Pop is open to all readers for letters in good taste on matters of public interest. Letters longer than 300 words are subject to abridgement, and all letters should be double-spaced and typed if possible. Letters must be signed; names will be withheld on request. Deadline is the Friday before publication.

Reply on Challenge

Editor, The Spotlight:

After reading Carolyn Bennett's letter concerning her opposition to the Challenge program, I am compelled to respond to her charges that the program is "elitest" and that snobbery exists at the administrative level of our school district. To this I say Popcock!

Ms. Bennett is obviously in favor of bringing everyone down to a common level of mediocrity. By denying the fact that there are certain children who are "endowed with extraordinary ability far beyond the limits of their peer group," she is at the same time trying to deny that there are children who are learning disabled; children who currently (thanks to parents and administrators who do not suffer from her peculiar type of myopia, and who identified their particular needs) are receiving special help at considerable cost of taxpayer dollars.

Ms. Bennett appears to be against any educational program "that serve only the needs of one specific group of youngsters." Does she therefore favor doing away with the reading resource teachers, the speech teachers, the athletic coaches, and the many other employed by our district simply because only a small percentage of children are helped by these respective faculty? I think not!

The said fact is that Ms. Bennett, and others like here, are saying that our gifted children (children who also have special needs — just ask

any teacher!) should continue to pay an unconscionable price by the school board's inability to provide them with the resources required to meet their needs.

It is the school board's legal and moral obligation to provide the fullest educational opportunities for all its children. It is common knowledge that everyone benefits when a school district identifies and develops its best and brightest students. The challenge of our public school system is to strive to achieve the goal of "why not the best," rather than continuing to muddle through, as Ms. Bennett would have us do, behind the pathetic banner of the "lowest common denominator."

The entire school district benefits when we nurture our precious natural resources, including our gifted children.

Are these people who so vehemently object to a program for such youngsters jealous, perhaps, that their own children do not fall into such a category? I am beginning to suspect that such is the case.

Abbey Farbstein

Elsmere

Candidate replies

Editor, The Spotlight:

The latest issue of the *Spotlight* contains two references which appear to be directed against me. I would hope that you would permit me the opportunity to respond.

The first reference was contained in a letter to the Editor which indicated that a candidate for the school board favored elimination of the athletic program. Some people have attributed that remark to me. I have contacted the writer of that letter who advised me that she was not making reference to me in her remarks. The truth is that I favor a quality athletic program as part of a total program of quality education and have never advocated the elimination of the athletic program.

The second reference was contained in the editorial comment labelled Viewpoint. While Mr. Boynton is entitled to freely express his opinions, I take objection to the manner in which he chose to express them. Throughout his remarks he chose to label people according to the one facet of their life, without regard to their total qualifications. I was dismissed as unqualified to be on the school board, by inference, because I am a "lawyer...married to a schoolteacher," Mrs. O'Brien and Mrs. Fuller because they are "mothers of school-children," and various other members of the Board because of their chosen professions in the fields of higher education and insurance. I think I can fairly take some exception to being criticized by a man that I have never met and who has never contacted me to determine my views on any topic. If he had chosen to criticize a position of a candidate of a member or a specific item within the

budget, he may have offered something of value to the public, especially if he slated his reasons or the factual evaluation that supported his opinion. Dismissing someone because they sell insurance or are mothers (apparently fathers are o.k.) is an expression of prejudice and of little positive value.

It is, as Mr. Boynton says, sad that more people do not take a more active role in the affairs of the school district, or the town or the country. However, it appears to me as a bit inconsistent to complain about apathy by irrationally attacking those who choose to run for public office. Perhaps his efforts are indeed frightening away some of those who might otherwise run. I don't think that our town or our school district has any shortage of people with "courage, dignity or personal dedication." I do think that they must be more likely to come forward to take part in an honest discussion of issues

What's Your Racket?

PRINCE
• HEAD
• DUNLOP
• WILSON
• YAMAHA
• DAVIS
EXPERT STRINGING

CLOTHING by
COURT CASUAL • HEAD
ADIDAS • TOP SEED
SHOES by
TRETORN • ADIDAS • HEAD

southwood
TOTAL TENNIS CLUB
INDOOR COURTS • JUNIOR PROGRAMS

CALL 436-0838
Rt. 9W & Southern Blvd.
(at Thruway Exit 23) Albany

and opinions than to be subjected to a purposeless personal criticism.

If I may suggest a future editorial policy, Mr. Editor, it would be that you confine your opinions and criticisms to issues and positions and specific items of general concern. Prejudice and personal bias is beneath your dignity and ours.

Jed B. Wolkenbreit

Delmar

Accentuate the positive

Editor, The Spotlight:

On March 18 the Bethlehem Central Music Department presented "March Choral Festival '81", in conjunction with Music in our Schools Week. This concert was a combination of all the choirs in the school district. 584 students, the entire music department staff and a guest director, Mr. David Riley, Association Professor at Ithaca College School of Music, were involved.

There have been so many recent derogatory reports

about our school system and students that when something wonderful like this occurs it should get proper recognition. The work the Staff and students put into this concert was tremendous. Everyone involved should be congratulated. Their efforts were greatly appreciated by the many people who attended.

I hope in the future you will cover events such as this, to inform the community of some of the great things our BC staff and students are doing.

Lynn Petersen

What being gifted means

Editor, The Spotlight:

As a parent, teacher and taxpayer, I am shocked and upset at the school board's slashing of the Challenge committee's proposal for providing a program for gifted children. I believe that lack of information about who these children are and what their needs are make people indifferent to them.

First, a gifted child is

simply a child, with the same basic needs of childhood that all children have, and special needs that all children have too. Like all children, he needs an education that will be stimulating and relevant to him. Public education is a right!

What makes this child different than the masses is that, through no fault of his own he is performing or capable of performing athletically or academically at a more advanced level than his peers. Being gifted is something a child is. It is not a result of training, parental teaching or environment. Giftedness is an innate ability that can be nurtured or stifled, obvious or hidden, but once recognized, must not be ignored.

Contrary to public belief, these children do not necessarily "make it on their own" because they are "so smart." Without special attention they can become under-achievers, apathetic or discipline

problems. We all know the stories of Edison, Einstein, and Churchill who as unrecognized gifted students had severe difficulties in school but overcame their problems to make great contributions to the world. What other contributions to society have we missed and how many can we afford to miss because we look the other way?

A gifted child in the classroom presents a very special situation. To the teacher he is reasonably just one of 25 children with 25 problems. She cannot be expected to meet his academic needs on her own time. If she is lucky she can maintain his interest in school, provide some meaningful work and channel his free time into creative activities. To his classmates, he is the one who always knows the answers, always finishes his work early, gets to run errands or spend time in the library, and, depending on the child, is either the popular leader or is bullied or shunned.

For the gifted child it is

Delmar Antiques

\$150,000 TO SPEND

I Have European Buyer For Oriental Rugs

FREE appraisals made no obligation to sell
Also need antique jewelry, fine glasware, Furniture,
Quilts and Textiles, Dolls and Sterling Silver

439-8586/482-3892

Mon.-Fri. 12-5

Sat. 10-5 or by appt.

449 Delaware
Ave.

NERVE PRESSURE

May be the Exact Cause of your Health Problem

YOUR CHIROPRACTOR, through spinal adjustments corrects the spinal misalignments which removes the CAUSE of nerve pressure to the affected part of your body, which is making you SICK.

Many of Today's Ailments are Spinal Related Disorders:

Caused by:

NERVE PRESSURE

Danger Signals of Nerve Pressure or Pinched Nerves:

1. Headaches, Dizziness, Blurred Vision
2. Neck Pain, Tight Muscles, Spasm
3. Shoulder Pain, Pain Down Arms, Numbness in Hands
4. Pain between Shoulders, Difficult Breathing, Abdominal Pain
5. Lower Back Pain, Pain across Hips, Pain in Legs, Numbness of Feet, Constipation, etc.

Spinal Misalignments that CAUSE Nerve Pressure are determined by X-Raying the Spine



ALL NECESSARY X-RAYS WILL BE TAKEN FREE OF CHARGE

THIS PUBLIC SERVICE ENDS APRIL 30th - ACT NOW!!!

INSURANCE CASES ACCEPTED:

Health Insurance (Major Medical), Liability (Auto Accidents)
Workmans' Compensation (On the Job)

CHIROPRACTIC HEALTH CARE has come to MEAN A PLACE OF LAST RESORT for many of our sick and suffering



WE CARE

CHIROPRACTIC CENTER

DR. JAMES J. BARILE, DIRECTOR

163 Delaware Avenue (Opposite Delaware Plaza)
Delmar, New York 12054

Call 439-5077

most difficult. Who can expect a child who has been reading for three years to be interested in learning shapes, colors and the alphabet in kindergarten? Or reading in a second grade reader when you read the Hardy Boys at home? Doing good work usually leads to lots of busy work. And because he doesn't have to work long and hard to understand a concept or master a skill, he frequently misses that special time of just "teacher and me" that usually ends with a hug or a pat on the shoulder for a job well done. He knows that he is in some ways very different from his classmates, and his classroom experience does not indicate that this is "good," which adds up to a rather shaky self-concept.

A gifted child is as intel-

lectually handicapped in the normal classroom as a retarded child would be. For those who like to banter words and call this an elitist program, let them do so because in fact these children are intellectually the cream of the crop, just as the football hero is in the elitist program for gifted athletes called varsity sports. A program for these children would not foster snobbery, but would rather relieve part of the burden on the classroom teacher and provide these children with the opportunity that they are currently being denied, and that is to stretch their minds.

Our tax dollars currently provide many programs which benefit only a minority, sometimes only a small minority of the school population. These programs include varsity sports, remedial instruction in reading and math, speech therapy, guidance counseling, psychological testing, and special programs and services for children who are retarded or handicapped. Additionally, books and transportation are provided or paid for to children who attend private schools. I cannot believe that the school board's recent action is reflective of the feelings of the educated members of this community. It seems that the money is there somewhere for this much-needed program. For want of a dollar do we waste a mind?

Any mind, young or old, that is not stimulated and challenged is wasted. And any person that condones the wasting of a mind, a child, maybe a life, should not be in a position to make decisions that affect the future of your children and mine.

Patricia M. Bellizzi

Delmar

Advises spraying

Editor, The Spotlight:

I was astounded when I read your article concerning the gypsy moth problem in your April 2 issue. First, the title of the article ("Spraying is out, but trees can be saved")

NEW LISTINGS

Delmar

Spacious Cape, 3 or 4 bedrooms, 1 1/2 baths and located in the center of Delmar. Call Bob Edwards at 439-9906.

High 70's

Delmar

3 bedroom, 1 1/2 bath Ranch. Professionally landscaped. Excellent location. Call Joe Fiarro at 439-9906.

Mid 50's

Delmar

Move in condition! 3 bedroom, 1 1/2 bath Split Level in desirable location. Call Ann Warren at 439-9906.

Mid 60's

Delmar

4 bedroom, 2 1/2 bath Colonial in Hamagrael area with many extras. Call Bob Edwards at 439-9906.

Mid 90's

Delmar

2 or 3 bedroom, 2 bath Cape in desirable area. Call Harold Sergerstrom at 439-9906.

Low 60's

Slingerlands

Two family with 2 bedrooms, living room, dining room, kitchen and bath on each floor. In good condition. Call Bettie Lombard at 439-9906.

Low 40's

439-9906



Roberts
Real Estate

190
Delaware Ave.,
Delmar

gave the misconception that spraying will do no good. In the context of the article, you quoted a resident gardener as saying that spraying hurts the gypsy moth's natural enemies which can control "light investations." In the Bethlehem area, the outbreak is so severe that many people have lost entire trees due to complete defoliation.

I quote the United States Department of Agriculture, "The Gypsy Moth Handbook":

"The natural enemy complex, which is composed of parasites, predators, and disease, does not control the gypsy moth in outbreak situations but does aid in maintaining certain sparse gypsy moth populations at low levels. It may also help to extend the period of years between outbreaks. Disease is the major factor in halting outbreaks, but unfortunately this occurs only after the full impact of gypsy moth defoliation has been realized.

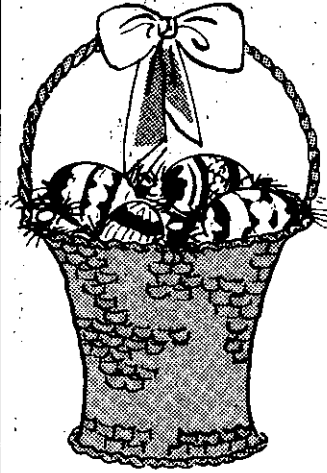
"There are many diseases caused by bacteria, fungi, or viruses that kill gypsy moth larvae. Only one, however, the nucleopolyhedrosis virus (NPV), has a dramatic effect on gypsy moth populations, frequently resulting in the total collapse of outbreaks."

Spraying does not affect these diseases of the gypsy moth, which will be the ultimate controlling factor. But until that time, residents can protect their trees against damage.

All the control methods mentioned in the article will help to control the infestation, however hundreds of residents are taking further action of control by way of spraying. I am a private contractor engaged in the business of tree care and protection, and I write this letter not to promote business, but to inform the people that private spraying is practical and economical.

Douglas R. Lee

Slingerlands



Community Corner

Worthy Breakfast

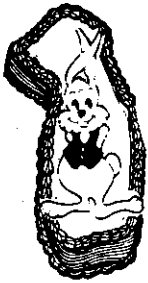
One of the most pleasant, and worthwhile traditions in Bethlehem comes up this Sunday as the Bethlehem Lions Club holds its annual Palm Sunday pancake and sausage breakfast. It's a fine way to observe the day, meet friends and help the many causes the Lions promote each year. Breakfast is served from 8 a.m. to 1 p.m. at the Nathaniel Adams Blanchard American Legion Post in Elsmere.

Community Corner, a public service column of important community events, is sponsored by

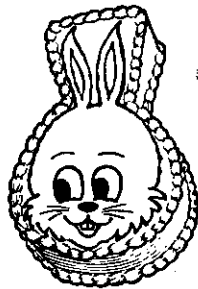
City & County Savings Bank
Member FDIC

163 Delaware Avenue, Delmar
(opposite Delaware Shopping Plaza)
439-9941

Carvel



Bunny Cake
\$2.95



Bunny Cake
\$4.95

NEW LOW CAKE PRICES!!!

6" ROUND.....	\$3.95
7" ROUND.....	4.95
8" ROUND.....	5.95
9" ROUND.....	6.95
10" ROUND.....	7.95

SHEET CAKES	
REGULAR.....	\$9.95
MEDIUM.....	11.95
LARGE.....	13.95
All cakes in stock — no order required!	

Ice Cream Store OPEN 7 days 9:30-9:00
222 Delaware Ave., Delmar
439-7253

**I've got
a beautiful lawn
for less than
\$1.95 a week***

and **LAWN DOCTOR** does the work

My neighbor has a do-it-yourself lawn.
I called Lawn Doctor.
My lawn is greener, healthier and more
beautiful. I saved money ...
and Lawn Doctor did the work.
Call Lawn Doctor. You'll see the difference
immediately.



SATISFACTION GUARANTEED OR YOUR MONEY BACK*

*based on annual program 3,000 sq. ft. lawn area

**Available from Participating Dealers Only



**LAWN
DOCTOR**

Get a Green Thumb
Without Spending
a Lot of Green

**LAWN DOCTOR
OF ALBANY-DELMAR
235-9561**

FLOWER WORLD®

OPEN HOUSE

Palm Sunday

Hours: 11-4

Large Assortment of Flowering Plants

Fresh Cut Flowers

FTD Easter Basket Bouquets

Open Easter Sunday

Daily 9-6

Delivery Anywhere in the Tri-City Area

Our New Location

239 Delaware Avenue

(next to Johnson's Stationers)

439-7641

All Major
Credit Cards



ROGERS

Running · Baseball · Track · All Court Tennis
LEATHER · CANVAS · NYLON

**NIKE
SALE**

ALL MODELS \$19.99

None held back — values to \$40

SPORT & SKI SHOPS

DELAWARE PLAZA • 439-4545

E. GREENBUSH PLAZA • 477-9104



J.W. Biernacki & Sons

BUILDER — CONTRACTOR
QUALITY HOMES

REMODELING

ADDITIONS

3 — Choice Solar Building Lots

(2) ¼ Acre, (1) 1½ Acres, Town of New Scotland.
Bethlehem water. Health Dept. Approved. Your plans
or ours.

FRED BIERNACKI
VOORHEESVILLE
765-4033



Bethlehem Public Library
451 Delaware Ave.
Delmar, NY 12054

7-123-