

# The Spotlight

June 25, 1981  
Vol. XXVII, No. 26

25¢

*Graphic newsweekly serving the towns of Bethlehem, New Scotland, and nearby communities*

BETHLEHEM

## Drug committee: a new beginning?

Page 9

BETHLEHEM  
PUBLIC LIBRARY

NEW SCOTLAND

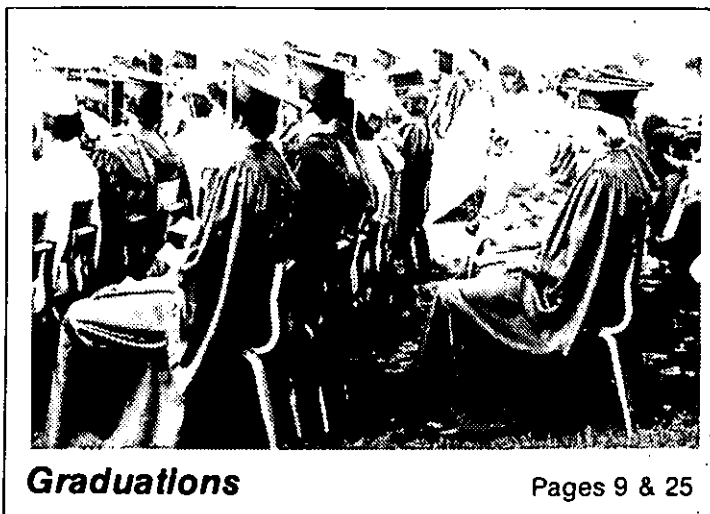
## GOP picks candidates

Page 21



**Father's Day togetherness**

Page 19



**Graduations**

Pages 9 & 25

## Roberts Real Estate Special "FANTASY HOUSE"



As you sit in the living room and "Great Room," you appear to be in a fantastic tree house.

Three sets of oversize Thermopane glass doors, and walls of glass to the peak, look out on the wood deck on three sides. A spectacular view of the Helderberg range is before you, and you appear to be in the tree tops looking down at the Vly Creek Reservoir. A massive fossil rock fireplace adds warmth to the room.

Below the living room is the newly carpeted, immense family room with walk out areas through 3 more sliders.

A minimum of grass and flower area allows Mother Nature's decorating skills even though all the landscaping, walls, and storm drain areas, were designed by professional landscape architects at great expense.

Three bedrooms and two baths, laundry room, utility and storage rooms completes the complement of rooms.

Although neighbors are near, none are visible, except on the distant hillsides. A truly unique, 5 acre property with - out equal. **\$195,000.**

### MORE NEW LISTINGS

South Bethlehem ..... **\$98,900**

### TRUCKERS PLEASE NOTE

Property includes a 40' x 60' Truck Garage, several building lots, and a delightful 3 bedroom Ranch home. Call Joe Fiato at 439-9906.

Delmar ..... **\$98,500**

Klersy built, 4 bedroom, 2½ bath Colonial in desirable location. Call Eleanor Morton at 439-9906.



**Roberts**  
**Real Estate**

**Call 439-9906**

**190 Delaware Ave.**

## Spotlight CALENDAR

**Tri-Village FISH**, 24-hour-a-day voluntary service year 'round, offered by residents of Delmar, Elsmere and Slingerlands to help their neighbors in any emergency. 439-3578.

**Town of New Scotland Town Board** meets first Wednesday at 8 p.m., Planning Board second and fourth Tuesdays at 7 p.m., Recreation Commission third Tuesday at 7 p.m. Board of Appeals meets when necessary, usually Fridays at 7 p.m. Town Hall, Rt. 85.

## The Spotlight

(USPS 396 630)

### Publisher

Richard A. Ahlstrom

### Editor

Thomas S. McPheeters

### Senior Editor

Nathaniel A. Boynton

### Office Manager

Arline M. Holder

### Secretary

Mary A. Ahlstrom

### Subscriptions

Kara Gordon

### Contributing Photographers

R.H. Davis,

J.W. Campbell

### Sales Representatives

Susan E. Moore,

Jerry Gordon, James Sullivan,

Mary Powers, Judy Arbour

### Production

Brian Cahill, Manager

Ann Brink, Elaine Ellery

Caroline Terenzini

### Newsgraphics Printing

Gary Van Der Linden

*The Spotlight is published each Thursday by Newsgraphics of Delmar, Inc. 125 Adams St., Delmar, NY, 12054. Second class postage paid at Delmar, NY. News and ad copy deadline: 4 p.m. Friday for following issue.*

*Subscription rates: Albany County one year \$7.50, two years \$13.50; elsewhere, one year \$9.00. Send address changes to The Spotlight, P.O. Box 152, Delmar, NY 12054.*

MEMBER NEW YORK PRESS ASSN.

Phone 439-4949

## LESS THAN 15¢ A DAY

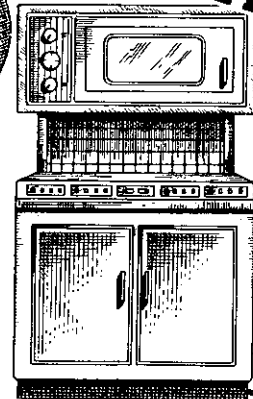


### IT'S A FACT:

The electricity required to do all the cooking, baking and roasting for a family of four averages about 14¢ a day.

Because electricity is still inexpensive, it only takes about a dollar to cook 21 meals a week.

at your service



**NIAGARA MOHAWK**

*Niagara Mohawk's 222,000 shareholders remind you to control the energy you use so it will remain one of today's best values.*

NOW OPEN SUNDAYS

NOW OPEN SUNDAYS  
OPEN EVENINGS

## 3 FARMS DAIRY STORE

ROUTE 144

767-2252

Now Selling Fresh Cut Prime Meat, Full Line of Cold Cuts & Deli Items

### MEATS

#### PORK

OUR OWN ITALIAN  
SAUSAGE  
\$1.49 LB.

No Preservatives Added

MIXED PORK CHOPS  
\$1.59 LB.

COUNTRY STYLE  
SLAB BACON  
\$1.44 LB.

ROLLED PORK ROAST  
\$1.59 LB.

### SPECIAL ITEMS DAIRY PRODUCTS

1 Lb. 3 Farms Cottage Cheese ..... 75¢  
1 Gallon Homogenized Milk ..... \$1.71  
½ Gallon 3 Farms Ice Cream ..... \$1.49  
1 Pound 3 Farms Tub Butter ..... \$1.55  
1 Qt. Farm Fresh Churned Buttermilk ..... 56¢  
½ Gal. Tropicana Pure Orange Juice ..... \$1.65

### BEEF

BULK COUNTRY  
SAUSAGE  
\$1.27 LB.  
No Preservatives Added

SPARE RIBS  
\$1.44 LB.

CUBE STEAKS  
\$1.89 LB.

LONDON BROIL  
\$2.29 LB.

SIRLOIN ROAST  
\$2.35 LB.

### FRESH BEEF BUYS

COOK OUT STEAKS  
\$1.65 LB.  
BONELESS CHUCK ROAST  
\$2.29 LB.  
SIRLOIN STEAK \$2.94 LB.  
BONELESS \$3.04 LB.  
HAMBURGER PATTIES  
5 LB. BOX  
\$1.89 LB.  
BULK HAMBURGER  
5 LBS. and OVER \$1.34 LB.  
N.Y. STRIP STEAK  
\$3.60 LB.  
EYE OF THE ROUND  
\$2.25 LB.  
TOP ROUND ROAST  
\$2.53 LB.

### DELI ITEMS

AMERICAN CHEESE  
\$1.89 LB.  
5 LB. Loaf \$1.79 LB.

POTATO & MACARONI  
SALADS  
74¢ LB.

N.Y.S. CHEDDAR CHEESE  
(SHARP)  
\$2.20 LB..

(OUR PRICES SUBJECT TO CHANGE)

\*\*\*Special\*\*\*  
COOKED HAM \$1.99 LB.

COOKED ROAST BEEF  
\$3.45 LB.

ALL WHITE TURKEY  
BREAST  
\$2.59 LB.

BOLOGNA \$1.67 LB.  
COOKED SALAMI \$1.49 LB.

## Luxury & Value in Delmar/Slingerlands



**Chadwick  
Square**

**IN DELMAR**

The only luxurious  
community of Carriage  
Homes in the Capital District.

Come visit our four beautifully furnished  
models and see why we have over 40 happy  
home owners in just one year. Large  
pool and tennis complex  
near completion.

from  
**\$59,700**

**Directions:** From Delmar, south on Elsmere Ave. left on Feura  
Bush Road, right on Wemple Road to Chadwick,  
½ mile on left.

**Surrey  
Mall**

**IN SLINGERLANDS**

Just opened and already the  
pride of the area. Visit our  
unique Display Center featuring  
nine distinctively different home designs  
being built in Surrey Mall — you'll find one  
that fits your lifestyle. Surrey Mall,  
an address of distinction  
in Slingerlands.

from  
**\$85,000**

**Directions:** Out Albany's New Scotland Ave. (or via Rt. 85  
from Campus Area). Turn right at Surrey Mall sign one mile  
beyond Blue Cross/Blue Shield building.

Sale Office Open Daily and Sunday

**Rosen-Michaels**

**Five Rivers Environmental Edu-  
cation Center**, grounds open  
daylight hours seven days a week;  
interpretive building open Mon.-  
Sat. 9a.m.-4:30p.m. Information,  
457-6092.

**Bethlehem Youth Employment  
Service**, Bethlehem Town Hall,  
summer hours Mon.-Fri. 8:30 a.m.-  
noon. 439-2238.

**Village of Voorheesville Board  
of Trustees**, fourth Tuesday  
at 8 p.m., Planning Commission  
third Tuesday at 7 p.m., Zoning  
Board second and fourth Tues-  
days at 7 p.m., when agenda  
warrants, Village Hall, 29 Voor-  
heesville Ave.

**Town of Bethlehem Town Board**,  
second and fourth Wednesday  
at 7:30 p.m.; Planning Board  
first, second and fourth Tuesday  
at 7:30 p.m.; Board of Appeals  
first and third Wednesdays at  
8 p.m. Town Hall, 445 Dela-  
ware Ave. Town offices are open  
8:30 a.m. to 4:30 p.m. weekdays.

**Welcome Wagon**, newcomers or  
mothers of infants, call 785-9640  
for a Welcome Wagon visit. Mon.-  
Sat. 8:30 a.m.-6 p.m.

**Bethlehem Recycling**, town  
garage, 114 Adams St. Papers  
should be tied; cans flattened;  
bottles cleaned, with metal and  
plastic foam removed. Mon.-Sat.  
8 a.m.-4 p.m.

**Children's Story Hours** sponsored  
by Bethlehem Library July 6 -  
Aug. 14. Mondays, Clarksville  
playground, 11 - 11:30 a.m.,  
Glenmont School playground, 2-  
2:30 p.m.; Wednesdays, Hama-  
grael School, 10 - 10:30 a.m.,  
Slingerlands School, 2 - 2:30 p.m.  
Thursdays, Elm Ave. Park, 1:30 - 2  
p.m., Elsmere School, 2:30 - 3  
p.m., weather permitting. Free.

**Bethlehem Summer Band** for  
instrumental students grades 6 -  
12 and alumni, rehearsals Bethle-  
hem Middle School music room  
Tuesdays and Thursdays, 7 - 9  
p.m. July 7 - Aug. 11. Fee \$10.  
Concerts July 23 and Aug. 13.

**School Age Playgrounds** for  
grades 1 - 6, games, arts, crafts,  
special events, weekdays through  
Aug. 14. Clarksville, Delmar and  
Hamagrael, 9 - 11:45 a.m.; Els-  
mere, Glenmont, Slingerlands, 1-  
3:45 p.m.; Becker School 9-12,  
1-3:45 p.m. See bus schedule for  
transportation. Free.

### PLAYGROUND BUS SCHEDULE

**Delmar-Hamagrael**. Children who  
participated in the Delmar Play-  
ground at the former Delmar  
School are invited to attend the  
Hamagrael School Playground. A  
bus will transport these children,  
making stops at locations indi-  
cated by italics:

Leave Bus Garage at 8:15 a.m.;  
Bus Garage to *corner of Borth-  
wick Ave. and Nathaniel Blvd.*

# STOREWIDE CLEARANCE

THE GREAT SUMMER CLEARANCE, THE  
ONE YOU ANTICIPATE, IS EARLY THIS YEAR -  
IN ORDER TO GIVE YOU TIME TO SHOP  
BEFORE THE 4<sup>th</sup>.

THIS EVENT WILL BE A FIRECRACKER!!!  
WITH EXPLOSIVE PRICES!!!

**20% to 50% OFF**

OUR ENTIRE SUMMER STOCK  
DRESSES - SPORTSWEAR - LINGERIE - ACCESSORIES

DOORS OPEN AT 10 AM - SEE YOU THEN!

DELAWARE PLAZA • DELMAR

**TOWN AND  
TWEED**

cover Borthwick Ave. to Kenwood Ave.; Kenwood Ave. to corner of Gardiner Terrace; Kenwood Ave. to corner of Kilmer Ct.; Kenwood Ave. to corner of McKinley Dr.; McKinley Dr. to corner of Chestnut Dr.; McKinley Dr. to corner of Huron Rd.; Huron Rd. to corner of Lansing Dr.; Lansing Dr. to corner of Stratton Place; Lansing Dr. to corner of Dawson Rd.; Dawson Rd. to corner of St. Clair Dr.; St. Clair Dr. to corner of Delaware Ave.; Delaware Ave. to corner of Village Dr.; Village Dr. to corner of Carriage Rd.; Carriage Rd. to Hamagrael School by 8:45 a.m. Return via same route at noon.

**Tri-Village Bus Route.** Leave Bethlehem Central Bus Garage 11:00 a.m. to Senior High School; to Blessing Rd., Krumkill Rd. and Schoolhouse Rd. and stop at the North Bethlehem Fire Department; back via Schoolhouse Rd. to Krumkill Rd. to Route 85 (Slingerlands By-Pass), left on Kenwood to Union Ave. to Slingerlands Elementary School; Slingerlands Elementary School to former Delmar Elementary School (New Town Hall) via Cherry Ave. and Delaware Ave.

Town Hall to Bethlehem Middle School via Kenwood Ave. and Delaware Ave.; Bethlehem Middle School to Elsmere Elementary School via Kenwood Ave., Elsmere Ave. and Delaware Ave.; Elsmere Elementary School to Hamagrael Elementary School via Elsmere Ave., Fernbank Ave. and

Wisconsin Ave. Hamagrael School to Elm Ave. Park.

*Pick-ups only at italicized sites.* Bus will return to the above areas from Elm Ave. Park via same route leaving at approximately 3:45.

#### Starting Times:

Becker Playground Route./ Pick-up 8:30, noon return only./ 12, pick-up 12:30, return 4 p.m. Pick-up at Jericho School. Pick-up at the Jericho School on Jericho Rd. South on Jericho Rd. to South Albany Rd.; South on South Albany Rd. to South Bethlehem School. Left on Bridge St. to Lasher Rd. Left on Lasher Rd. to Rte. 9 W. North on 9 W to Elm Ave. Left on Elm Ave. to Jericho Rd. Right on Jericho Rd. to 9W. South on 9 W to Beaver Dam Rd. Left on Beaver Dam Rd. to Rte. 144. North on Rte. 144 to corner of Clapper Rd.—turn around. South on Rte. 144 to Rte. 396. Rte. 396 to Thatcher St. Thatcher St. to 9 W. Cross 9 W to Cottage Lane. Cottage Lane to Beaver Dam Rd. Left on Beaver Dam Rd. to 9 W to Becker School.

**Selkirk-South Bethlehem Route.** Leave Bethlehem Central School Bus Garage, 11 a.m.; south on Elm Ave. to Houcks Corners; east on Feura Bush Rd. to 9 W; 9 W north (stop at Glenmont School); 9 W south to Dowerskill Village; Dowerskill Village to Rte. 396 to Beaver Dam Rd.; cover Beaver Dam Rd. to Rte. 144; north on Rte. 144 to Clapper Rd.; Clapper Rd. to Halter

## area arts

*A capsule listing of cultural events easily accessible to Bethlehem-New Scotland residents, provided as a community service by the General Electric Co. plastics plant, Selkirk. Phone numbers are for information and tickets.*

### THEATER

"The Shadow of a Gunman" (Abbey Theater of Ireland with Sean O'Casey classic), John Houseman Theater, Saratoga Performing Arts Center, **June 29-30 and July 1-2, 8:15 p.m.; June 30 and July 2, 2 p.m.** Tickets at Ticketron, SPAC box office and at the theater two hours prior to curtain time.

"Talley's Folly" (Pulitzer Prize winning play by Lanford Wilson), Woodstock Playhouse, Rts. 375 and 212, Woodstock, daily except Sunday **through June 28; 8:30 p.m.** except Sundays 2 and 7 p.m. and Thursdays 2 and 8:30 p.m.

"Same Time Next Year" (comedy), Woodstock Playhouse, **July 1-5, 7-12, 8:30 p.m.** (Sundays 2 and 7 p.m., Thursday matinee 2 p.m.) Box office 914-679-2436.

### MUSIC

Old Songs Festival of Traditional Music and Dance, Tawasentha Park, Rt. 146, Guilderland, **June 26 and 27.** Free daytime activities, workshops. Saturday from 11 a.m.-6 p.m.. Concerts 8 p.m. Friday concert: Schenectady Pipe Band, Tarver Gospel Singers, Michael Cooney and Michael McCreesh and Co. Saturday concert: Ruth Pelham, Robin and Linda Williams, George Ward with Bernie Ouimet and Vic Kibler, and Tony Barrand, John Roberts, Steve Woodruff and Fred Breunig.

Young Musicians Forum, concert, Unitarian Church of Albany, 405 Washington Ave., **June 27, 8 p.m.** Free. 765-3609.

### ART

Mohawk-Hudson Regional Art Exhibit, juried show by Albany Institute of History and Art, 125 Washington Ave., Albany, **June 30 - Aug 30.**

A Touch of Iroquois, new permanent exhibit at New York State Museum, Empire State Plaza, Albany.

Art in the Park (local artists and craftsmen display works), Wood Memorial Park, Hoosick Falls, **June 27, 10 a.m.-6 p.m.**

Helderberg Weavers, seventh annual show at Guggenheim Pavilion, Institute on Man and Science, Rensselaerville, **through July 31.**

## Special On CHANNEL 17

- Life With St. Helens  
Thursday 8:30 p.m.
- Nat Geog. Special: National Parks  
Thursday 11:30 p.m.
- The Christians  
Friday 10:30 p.m.
- Dance in America  
Monday 9 p.m.
- Three Cheever Stories  
Monday 9 p.m.
- Mystery: "Rebecca"  
Tuesday 9 p.m.

Owens-Corning Fiberglas supports public television for a better community.

Owens-Corning is Fiberglas

OWENS CORNING  
FIBERGLAS

GENERAL  ELECTRIC

SELKIRK, NEW YORK 12158

An Equal Opportunity Employer

## HYDRA-SLEDGE™

### Paving Breakers



**FOR RENT  
OR  
FOR SALE**

#### Features & Benefits

1. **Low priced** — lower in cost than the cheapest air compressors
2. **Economical** to operate — gas engine uses less than one gallon per hour
3. **Low maintenance** — common sense long life hydraulic system design
4. **Quality manufacturing** — 1000 hour warranty on hammer accumulator
5. **Air-Cooled** 14 hp Kohler engine
6. **Portable** — can be lifted out of pickup truck by two men or moved around job sites by one person
7. **Powerful** — hardest hitting 90 lb. breaker — 100 ft-lb/blow impact is more powerful than the biggest hand held air hammers
8. Propane conversion kit option available for jobs inside buildings
9. **Quiet operation** — allows operator to think, talk & listen — excellent for jobs in QUIET ZONES
10. **Clean** — no air blast thru tool chuck to kick up dirt and dust
11. **Oil Cooler** keeps oil temperature within 40° of ambient even in the heat of summer, oil temperature stays below 150°F



**Abele Tractor  
and Equipment  
Co., Inc.**

Sales • Service • Rentals

72 Everett Rd.  
Albany, New York-  
12205

**438-4444**

Rd. via 144; and turn around...  
South on Rte. 144 to Maple Ave.  
west on Thatcher St. to Cottage  
Lane; cover Cottage Lane to  
Maple Ave. to Beaver Dam Rd. to  
Rte. 396; west on 396 to South  
Albany Rd.; north on South Albany  
Rd. to Bell Crossing Rd. and  
Jericho Rd.; Jericho Rd. east to  
New Rd. (Long Lane); Long Lane  
east to Elm Ave.; Elm Ave. east to 9  
W and turn around.

Elm Ave. west to Fairlawn; Fair-  
lawn to Elm Ave. Park. Bus will  
return to Selkirk and South

Bethlehem areas from Elm Ave.  
via the same route at approxi-  
mately 4 p.m.

#### THURSDAY, JUNE 25

**Albany County Audubon Society**  
board of directors, Bethlehem  
Library, 7:30 p.m.

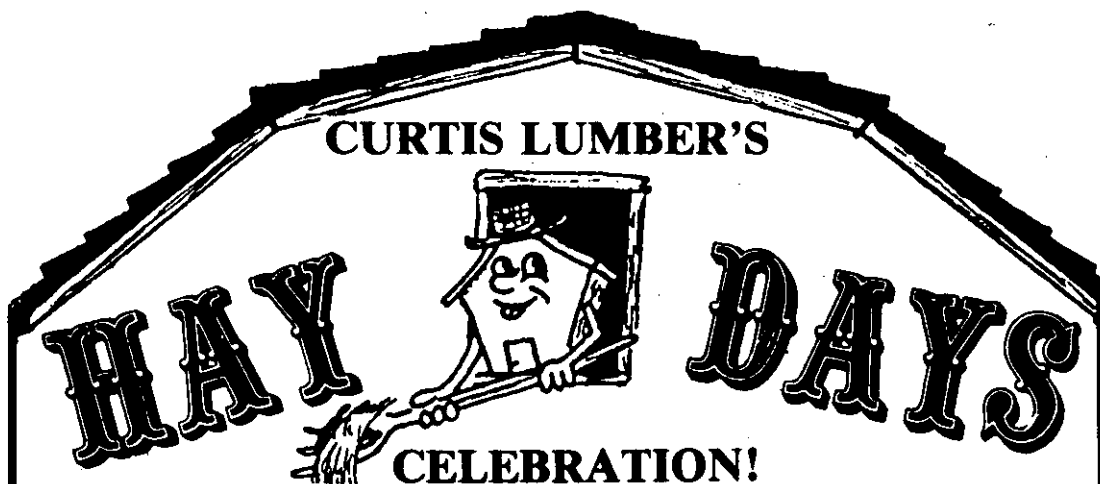
#### FRIDAY, JUNE 26

**Recovery, Inc.**, self help for  
former mental patients and those  
with chronic nervous systems,  
First United Methodist Church,  
Delmar, 12:30 p.m. All welcome.

#### SATURDAY, JUNE 27

**Youth Soccer Tournament**, Beth-  
lehem Soccer Club intra-club  
games for under 12, under 10 and  
under 8 age-group teams, all day,  
BCHS field, starting at 10 a.m.  
Food snacks available at field.  
Public welcome.

**Tenth Year Reunion**, Voorhees-  
ville High School Class of 1971,  
Golden Fox Restaurant, Central  
Ave., Colonie, 7 p.m. For infor-  
mation, Carol Chisholm Lavin,  
436-6657.



June 9 - June 27

### "HAY-DAYS" CATALOG SPECIALS!

- ★ Valspar Exterior Latex White  
House Paint - \$11.88 Big 2 Gallon Pail!
- ★ Gypsum Wallboard - 4x8x3/8" - \$2.89
- ★ 5 Gallon Driveway Sealer - \$5.99
- ★ Patio Block - 29¢ ea. - Red, Green, Charcoal
- ★ 16' Stanley Powerlock Tape - \$6.97

#### ★ SPECIAL EVENTS ★

Saturday, June 27, In Our Delmar Store!

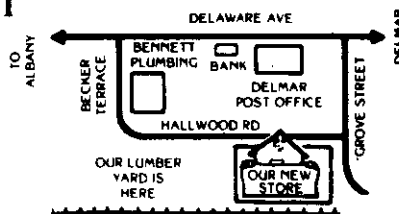
- ★ "Organized Ford" A 1916 Organ on a 1922 Model T Ford - 11a.m.-1p.m.
- ★ "Graco" Airless Paint Sprayer Demo 1p.m.-3p.m.
- ★ Door Price Entries for a Chance at a \$200.00 Shopping Spree at Grand Union!

## CURTIS LUMBER CO., INC.



**DELMAR, N.Y.**  
11 GROVE STREET  
PHONE: 439-9968

**HOURS:**  
Monday-Saturday  
7:30 AM to 5:00 P.M.  
Thursday till 8:00 P.M.



**Chicken and Biscuit Dinner,** Thompson's Lake Reformed Church Rts. 157 and 157A, East Berne, continuous servings 4:30 - 7 p.m.

**Orienteering Workshop,** on the art of using map and compass, Five Rivers Environmental Education Center, Game Farm Rd., Delmar, 9 a.m. - noon for teachers, 1 - 4 p.m. for others. Preregistration by June 25, call 457-6092.

#### TUESDAY, JUNE 30

**Summer Family Movie Series,** Voorheesville Public Library, So. Main St., "A Boy Named Charlie Brown," 2:30 P.M. Free.

#### SUNDAY, JUNE 28

**Victorian Period Exhibits,** Bethlehem Historical Assn., Schoolhouse Museum, Rt. 144 and Clapper Rd., Cedar Hill, 2 - 5 p.m. Open to public every Sunday through October.

#### MONDAY, JULY 29

**Temple Chapter 5 RAM,** first and third Mondays, Delmar Masonic Temple.

#### TUESDAY, JUNE 30

**Bethlehem Lodge 1096 F & AM,** first and third Tuesdays, Delmar Masonic Temple.

**Bethlehem Sportmen's Club,** first Tuesdays, Five Rivers Environmental Center, 7:30 p.m. Guests welcome.

#### WEDNESDAY, JULY 1

**New Scotland Kiwanis Club,** Thursdays, New Scotland Presbyterian Church, Rt. 85, 7 p.m.

**Bethlehem Senior Citizens** meet every Thursday at the Bethlehem Town Hall, 445 Delaware Ave., Delmar, 12:30 p.m.

**New Scotland Town Board,** New Scotland town hall, 8 p.m.

#### THURSDAY, JULY 2

**Bethlehem Senior Citizens,** Bethlehem town hall, 12:30 p.m. Muriel Brown, 439-2458.

#### FRIDAY, JULY 3

**Recovery, Inc.** self help for former mental patients and those with chronic nervous systems, First United Methodist Church, Delmar 12:30 p.m.

#### SATURDAY, JULY 4

**Family Day,** Elm Ave. Park, Bethlehem, starting with Firecracker Footrace in various age categories, 9 a.m., Parent-Child round robin tennis tournament, 10 a.m. chicken barbecue, noon, Skip Parsons jazz band, 1 - 5 p.m., field games and horseshoe tournament, 1 p.m., Bethlehem Baseball League all-star game, 3 p.m. Free.

#### MONDAY, JULY 6

**Clarksville Story Hour** for children, Clarksville School playground, 11 - 11:30 a.m.

**Glenmont Story Hour,** Glenmont School, 2 - 2:30 p.m.

#### WEDNESDAY, JULY 8

**Second Millers,** second Wednesdays, Delmar Methodist Church, 12:30 p.m. Reservations 439-3569.

**Bethlehem Junior Women's Club,** second Wednesday, Bethlehem Library. Information, 439-7094 or 439-9555.

#### THURSDAY, JULY 9

**Delmar Fire Dept. Ladies Auxiliary,** regular meeting second Thursday of every month except August, at the fire house, 8 p.m.

## WANTED:

### Delmar Antiques

#### Wants to Buy:

Dolls • Quilts • Jewelry  
Old Cupboards • Picture Frames  
Furniture • Rugs • China  
Old Clothing • Mohogany

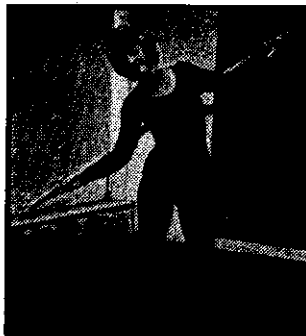
### INSURANCE APPRAISALS DONE

439-8586/482-3892

Mon. - Fri. 12-5

449 Delaware Ave.

# Finally!



## Extra Pounds and Inches Gone Forever!

"Extra pounds and inches at any time of the year are no fun, but especially not in the spring or summer!!

I joined Gloria Stevens and THIS spring I'm ready for anything!!"

(Margaret Orchva)

**Introductory Offer-**  
**6 weeks of unlimited visits for \$25**  
Fun exercise plan • No contracts to sign •  
No disrobing • Free Aerobics  
at participating salons • Air conditioned



**Gloria Stevens®**  
**FIGURE SALONS**

Sometime this summer, we'll be celebrating our MILLIONTH MEMBER!!  
We've got something special just for her... and for YOU, too!!  
WATCH YOUR LOCAL NEWSPAPER FOR DETAILS.



### Look Your Best This Summer!

Bring in this Coupon and receive a  
Complimentary Visit At:

**GLORIA STEVENS**  
**FIGURE SALON**  
**155 DELAWARE AVE.**  
**ELSMERE, N.Y.**

Call us today for appointment at 439-8104  
You have nothing to lose but pounds & inches!  
(Coupon good until 7/3/81)

### NOW! 2 convenient locations

Call 439-8104  
155 Delaware Ave.  
Elsmere

Call 482-8691  
355 Ontario St.  
Albany

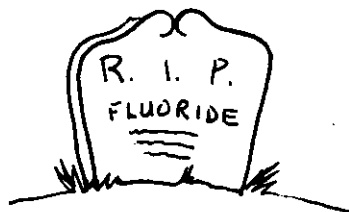
(Opposite Delaware Plaza)

Over 155 Salons throughout the U.S. and Canada

Mon.-Fri. 9 to 9 • Sat. 9 to 3

"Reason we're so big?... We're the best!"

## "Requiem For A



## Trace Of Fluoride"

**Died: February 25, 1981. Town of Bethlehem.**

**Killed by indifference, misunderstanding, ignorance and self-serving interests.**

On your tombstone is this quotation from the National Center for Disease Control:

Water fluoridation is one of the safest and least costly public-health measures we can take to protect children and adults from tooth decay. Where fluoride has been added to community drinking water in the proper tiny amount, there has never been one single substantiated demonstration of any kind of harm to anybody.

Then who or what killed the fluoridation in Bethlehem's water supply? It certainly wasn't Supervisor Corrigan who gave his full support.

Was it cost? Mr. Corrigan estimated yearly cost to all residential water users at \$735. (19 cents per child to reduce children's lifelong expectancy of dental disease by 50-65%). Councilman Mocker said the board used its "best judgement." This was the same judgement that:

- spent \$101,000 to get rid of one man (same amount would have brought enough fluoride for 100 years!)
- authorized \$24,000 for a garbage study apparently without competitive bidding or examination for conflict of interest and even though they had created the position of Town Engineer presumably to do such work.
- is spending well over a million dollars on our water system and yet apparently is taking no step to recycle the million gallons per day fed to two industries and then immediately dumped into the Hudson River.

Was it because there are better alternatives? Mr. Prothero and Mrs. Bickel referred to "easily available" alternatives. Tablets or liquid supplements are the only other choices. In this form, fluoride is hard to remember (everyday for 12 years), less effective, and simply not affordable for some Bethlehem families. Tablets at an average cost of \$15.00 per year X 4,000 children equals \$60,000 per year. Measure this against Mr. Corrigan's \$735 figure! Then project that for 12 years!

Was it to keep our water pure? Councilman Prothero referred to a need to supply "potable" (definition: suitable for drinking) water, and nothing else to our citizens. Mr. Prothero and his Bethlehem Safe Water Association (BSWA) supporters know that fluoride at proper levels in our water is colorless, tasteless and odorless. And that Sensor Consultants tasted 3 dozen bottled drinking waters and New York City (fluoridated) water, then voted NYC water the most "potable." Mr. Prothero also referred to "fresh water." Apparently, he was not aware that the town adds polyzinc sulphate, chlorine, and aluminum sulphate—and if this were removed the water would still not be pure.

Was it doubt of fluoride's beneficial effect on teeth? No. Only Councilman Prothero doesn't seem to recognize this unquestioned benefit to dental health. All except Mr. Corrigan apparently feel that dental disease is not a very serious matter. People have died from dental infections from

tooth decay. Has anyone ever died from drinking fluoridated water?

Then was it a question of safety? The Bethlehem Safe Water Association would have you believe so. The Board was given proof that the literature distributed by BSWA (sold out of Gravette, Arkansas) contained over 30 easily identified false statements. No one on the board or any opposing speaker could point to any bona fide case of harm to anyone from properly fluoridated water.

Was it conflict of interest? Mr. Mocker took great pains to read into the Town Records a letter extolling the virtues of the BSWA's star witness, Dr. Krook, a veterinarian from Cornell. When it was subsequently demonstrated that this vet's testimony was based on at least five false statements, Mr. Mocker refused to enter this into the Town Records. Was Mr. Mocker's vote motivated by his concern for cows or for children?

Did Councilman Geurtze kill this "trace of fluoride in the water"? Mr. Geurtze comes from Glenmont (as does Mr. Mocker). Mr. Geurtze said he opposed fluoridating 100% of the water when only 1% of the people would be "beneficially" affected. Now 1% of 25,000 is 250. While Mr. Geurtze may think only of Glenmont, still of the 4,000 children (12 or under) in Bethlehem there must be more than 250 children in Glenmont. Mr. Geurtze apparently gave no thought to the total community nor of the lifelong pyramiding effect generation upon generation as noted so eloquently by Mr. Corrigan.

Was it politics? The councilmen each insisted "no." But isn't it funny how the school boards, PTA's, HSA's and other civic groups said "We don't want to be involved in a political issue." Their own children would be immediately benefitted at minimal cost with no health risk and they found it "too political." Also note only anti-fluoridationists publicly threatened the Board with a loss of votes if they voted "the wrong way." Too bad our children do not vote.

In defense of Bethlehem parents in general and all those who have the welfare of children in their hearts—they never had a chance. A well-healed group of self-serving individuals flooded the town with mendacious literature using the "fear" technique.

You lost your life, "Trace of Fluoride," and the children of Bethlehem—now and to come—lost a great opportunity for relief from the pain and cost of dental decay. Councilman Mocker insisted, "We've demonstrated our best judgement." The children of Bethlehem, and the 1200 petitioners deliberately ignored by the Board should never forget it was Councilman Geurtze, Bickel, Mocker, and Prothero who were responsible for this lost opportunity.

Or is it really lost? Can reasons still prevail?

**Ad Hoc Committee to Improve the Health of Bethlehem Children.**





# The Spotlight

Graphic newsweekly serving the towns of Bethlehem and New Scotland, Albany County, N.Y. • (518) 439-4949

## New youth board to lead drug, alcohol fight

"You'll have to have some faith that something is going to happen," said Lawrence Zinn as the first full-scale meeting on drug and alcohol abuse in Bethlehem in nearly two years drew to a close.

Indeed, "something" is happening—a new committee is being formed, a new counseling service is coming to town and the school district will be getting some help in dealing with drug and alcohol-related student problems.

But it was evident that the meeting Tuesday was as frustrating to some people as the long wait for action had been. Most of the time was spent in a recapitulation of the work done by the committee established in 1979 by the Bethlehem Central Parent-Faculty Organization. As it turned out, that committee and the subcommittees it established actually covered quite a bit of ground. But after a series of meetings interest and participation in the committees apparently died down, and when drug abuse at the high school again became an issue last fall no one was prepared to react to it.

It took a new initiative by Zinn, superintendent of the Bethlehem Central School District, and Town Supervisor Tom Corrigan to get things moving again.

"The ball is in our court now," Corrigan said.

The key recommendation of the PFO committee is the establishment of a town-wide youth board, with representation from the schools, the town, the clergy, business and service clubs.

As outlined by committee Chairman Karl Gohlke, the youth council should be small

enough (about 10 members) to become a flexible, working body able to carry out specific projects.

There appears to be no doubt the board will be established. The school board voted the following night to designate Zinn as its interim representative, with BC High School Principal Charles Gunner as his alternate. Corrigan said Friday he will ask the town board to designate representatives at its meeting Wednesday. Representatives of the Bethlehem Chamber of Commerce and the Tri-Village Clergy have already pledged support.

But there are a number of questions to be resolved, most of them revolving around funding and representation.

The original PFO plan called for one seat each for the administration of the Bethlehem Central and Ravena-Coeymans-Selkirk school districts, two seats each for students in those districts, one town representative and one seat each for business, clergy and service clubs.

Corrigan said that legally the town must provide equal service to all areas, which means that not only must Ravena-Coeymans-Selkirk be represented, but also the Guilderland School District, which covers a part of North Bethlehem. Zinn said he plans to suggest to the other districts that they agree to some form of combined representation in order to keep the board small.

Student representation could also be a problem. Rev. Kenneth W. Gregory, the associate pastor of St. Thomas Church who chaired one of the PFO subcommittees, said experience in other towns showed that it is necessary to give nearly equal representation to youths. But town officials, remembering the administrative problems involved in the old Bethlehem Coffeehouse operation, are leery of turning over too much control. And the Bethlehem Central School Board agreed that rather than asking the high school student senate to choose representatives they would ask Gunner to make the choices.

As for funding, it appears likely that at least initially the



Alicia Smith was one of 349 Bethlehem Central seniors receiving diplomas Friday at the high school's commencement ceremony.

Tim Haverly

## WESTCHESTER WOODS

In Delmar's finest neighborhood, a beautiful Klersy-Built two story with a contemporary flair. Professionally decorated, large rooms, excellent traffic pattern, lovely cul-de-sac setting. This 2700+ square foot home has 4 bedrooms, 2.5 baths featuring large master suite with full bath. Bright breakfast area with sliding doors to backyard patio. Lots of closets, lots of storage. First floor laundry. Tops in energy efficiency. Proudly offered at **\$158,000.**

## BEST FOR THE MONEY

An opportunity to buy a 4 bedroom 2.5 bath colonial at a fantastic price. Well constructed, brick and aluminum exterior, low cost gas heat, central air, close to recreational facilities, should be seen. **\$75,900.**

## ALBANY

Convenient location, quiet street, extra large lot, 4 bedrooms, one + bath, well maintained, aluminum siding, income garages. **\$32,900.**

## INVESTMENT PROPERTY

Just 10 minutes from Albany, two family set up with front and rear entrances. Upper flat has three bedrooms, lower flat has two. Extensively remodeled. Must be seen to appreciate potential. Owner financing available to qualified buyer. **\$34,000.**

## KENAWARE

Immaculate raised ranch in one of Delmar's most desirable neighborhoods. 4 bedrooms, 1.5 baths, Slingerland School, close to library, busline. Move in condition. **\$64,500.**

## ESTATE SALE

Three bedroom ranch on established Delmar street. Well constructed, excellent condition, mature lot. Spacious rooms, 1.5 baths. Call for appointment. **\$59,800.**



**K KLERSY REALTY**  
**439-7601**

282 DELAWARE AVE., DELMAR 12054



HENRY J. KLERSY JR. BROKER

town and Bethlehem Central will split whatever costs are involved. But both boards are cautious here also. "What I'm talking about is that we don't get committed to run the whole thing," Board Member John Clyne said at last week's BC meeting.

Gohlke said he envisions getting a retired person to sit on the board to act as its "administrative entity" without pay.

Father Gregory's group, evidently the most active of the three subcommittees established two years ago by the PFO, also raised some difficult questions. The group agreed that there is a need for places young people can go, "but not just for the sake of having a place," he said. What is needed is something which will draw the uninvolved kids, which can be adequately supervised without driving people away, and where counseling and outreach would be available.

The problem of suitable youth activities still stumps town officials. The old coffee-house is not a model anyone wants to repeat, nor is there an adequate facility at hand. Corrigan was asked about the rear of the old town hall, and replied that it might be possible to use it for counseling and related services, but that the space isn't adequate for large-scale activities.

If all that seems somewhat far in the future, there were

two concrete developments. Project Equinox will open its satellite counseling office in Delmar during the first part of July. (See accompanying story). And Zinn told the board of education that Albany County has obtained a state grant which will allow county school districts to hire, on a joint basis, two counselors to train local teachers or counselors in handling drug abuse problems.

The counselors will be available to work part-time in Bethlehem.

*Tom McPheeters*

## Board hears request

The Bethlehem Board of Appeals is considering a request from David A. Kadish, of 97 Delmar Pl., Delmar, for a variance in order to complete remodeling of his home. Kadish had been granted one such variance but was forced to request another when architectural problems caused changes in his remodeling plans.

A similar request was made by Norman B. Andrews, of 58 Greenock Rd., Elsmere, seeking a variance from the "percentage of lot occupancy" requirement so that he can construct a summer porch.

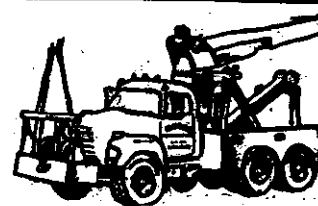
## Car stolen

A 1981 Fiat was stolen from a residence on Apple Blossom Lane in Voorheesville Friday, according to Albany County sheriff's deputies.

## AEROBIC DANCE TRIM

Do something special for yourself this summer!  
Evening classes starting July 7 through August 13  
TUESDAYS and THURSDAYS from 7 to 8 p.m.  
at the Masonic Temple, Delmar  
CALL Linda Herzog • 439-3862 • Pre-register

**BLEAU'S**  
Towing & Service  
Elm Avenue, Selkirk



NO JOB TOO BIG OR TOO SMALL

**Complete Auto & Truck Repairs • Crane Service**  
24 Hour Emergency Towing Service  
4 Radio-Dispatched Trucks  
**CALL US 439-8108**

## Equinox operation outlined

"We're just a small part of the action," Project Equinox Director Mark Yolles told the approximately 40 people gathered June 16 to discuss approaches to Bethlehem's drug and alcohol abuse problem.

But however small a part the Albany-based counseling service will play in Bethlehem, right now it is the only game in town, and Yolles' discussion of his plans fell on receptive ears.

Equinox, he explained, has three components. The best known is Refer Switchboard, a 24-hour crisis hotline staffed by trained volunteers. There is also a youth shelter, which has housed 200 teenagers during the past year and provides counseling to help the youths either return to their families or go on to another safe alternative.

The counseling center is the component which will be working in Delmar. Funded through the state, it is staffed by professionals, many with advanced degrees, and by federal law all contacts are kept confidential.

Unlike Refer and the youth shelter, which deal with a variety of problems, the counseling center focuses on drug abuse problems. "We offer professional counseling to individuals who are at the point where they feel they need help," Yolles said.

Within those limits --"for people who are ready for it"--counseling with emphasis on involving the entire family has proven to be a successful approach, he said.

The counseling center's

number is 434-6135, and individuals wishing to make an appointment to talk to a counselor either in Albany or Delmar may call that number. For the time being, the Delmar satellite office, which will begin operation early in July, will be open only by appointment.

Yolles said Equinox has an "adequate" spot, donated by the town, to work out of in Delmar, but will go slow in order to establish credibility. It will be necessary to convince young people that the center is not connected in any way with either the police or the schools, he said.

Most referrals, he said, come "from friends of clients."

For the future, Yolles said, it may be possible to establish a drop-in center where young people can come and talk on an informal basis with trained counselors.

### New singles unit

A new Jewish singles organization for ages 21-40 sponsored by the Albany Jewish Community Center has been formed entitled "Single File."

### Spotlight classifieds work!

#### Dave Landscaping

- Landscape Design
- Brick & Block Patios
- New Lawn Installation
- Retaining Walls
- Lawn Care
- Rototilling

439-5594

## WE ARE CONTINUING OUR SUMMER DRAPERY SALE

You can order something light and airy, or a lined or foam-backed drapery to keep out the heat. Call us NOW for FREE SHOP-AT-HOME SERVICE and SAVE 20%.

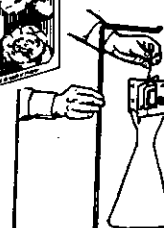
**DELMAR DECORATORS**

DELMAR, NY

439-4130



Nursery and Garden Centers



One Trap will effectively cover 5000 sq. ft.

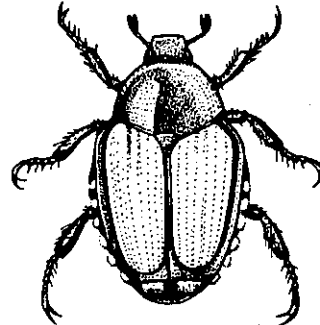
GYPSY MOTH

TRAPS

5<sup>99</sup>ea.

COVERS 10,000 sq. ft. Area

JAPANESE BEETLE



Sex-Lure

**TRAP  
SALE!**

**\$6<sup>88</sup>** ea.

Reg. \$9.99

**Glenmont**

Feura Bush Road

**439-8169**

**Guilderland**

Albany-Carman Rd.

**356-0442**

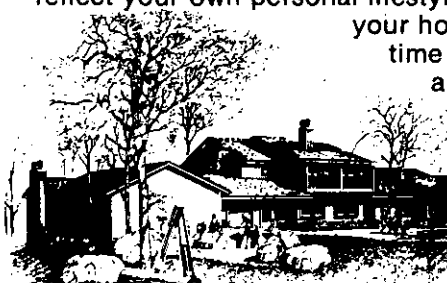
**Rexford**

Balltown Rd.

**399-2848**

## Landscape Plans

Our PERSONALIZED LANDSCAPE PLANS will reflect your own personal lifestyle, add equity to your home, and save you time and money over and over again. A



beautiful landscape can be designed for low maintenance, too!



Come in today or call and let one of our designers start a plan of landscape development for your home. Through professional landscaping you will enhance your surroundings and invest in your future.



**J.P. JONAS, INC.**

Landscape Designers & Contractors

Feura Bush Road, Glenmont  
(a Garden Shoppe affiliate)

**439-4632 • 439-4820**

## BETHLEHEM

### Tax grievances on the upswing

Whether because of the increased attention focused on tax assessments this year or because of the state of the economy, Grievance Day in

Bethlehem this year produced 242 complaints, 86 more than last year.

Of these complaints, seven came from industrial or commercial property owners, a figure which Assessor Gilbert Houk said is unusually high.

Grievances appear to fluctuate

considerably from year to year - 270 property owners filed in 1979 - but one factor which may have contributed to the number of complaints this year was the two informational meetings held by town Democrats, explaining how to file and what information is available. Houk's office also kept extra hours to make it possible for property owners to check the assessment books prior to the June 16 hearing date.

driving when she is released from the hospital. Eva I. Kwiatkowski, 20, of East Greenbush, was driving north on Rt. 9W at 10:10 p.m. Sunday when she lost control of her car as she was approaching the Rt. 396 intersection. Bethlehem police said she submitted to a blood test after regaining consciousness in the hospital. She suffered broken ribs and internal injuries. Police said the car missed several children in the yard of a roadside residence when it left the road.

## KAREN'S KORNER

417 Kenwood Ave., Delmar  
Behind Sporthaven Lanes

Now Accepting Spring & Summer Items

Summer Hours: Tues., Wed. & Thurs., 10:00a.m.-4:00p.m.  
Saturday by Appointment

CLOTHING • BOOTS

For more information 439-5050

### Injured and arrested

A driver who was taken unconscious by ambulance to Albany Medical Center after her car hit a tree in Selkirk faces a charge of drunken

### Return those books!

All private and parochial school students who live in the Bethlehem Central School District are reminded that books borrowed for the past school year should be returned by now. Any still out must be brought immediately to Mrs. Kass at the Educational Services Center, 90 Adams Pl, Delmar, between 8 a.m. and 4 p.m. on

Buenau's  
Opticians  
celebrate  
their

# 2nd Anniversary

at the Empire State Plaza

## SOFTLENS CONTACT LENS



# \$99

## COMPLETE

- Eye Examinations
- Unlimited Follow-up Visits
- Professional Fee Included

**SUNGLASS SPECIAL**

Sunglasses

You purchase the  
lenses and the tint

Buenau's will give you the frames!\*

**NON PRESCRIPTION SUNGLASSES 20% OFF!**

\*Prescription only.

# BUENAU'S OPTICIANS INC.

228 Delaware Ave  
Delmar  
439-7012

Empire State Plaza  
(Concourse Level)  
465-1088

71 Central Ave.  
Albany  
434-4149



Tom Hughes



Mike Buenau

WILLIAM L. FOX  
MICHAEL KATZER  
**ATTORNEYS**

Available to Serve You in  
Delmar & E. Greenbush

Personal Injury • Divorce  
Custody • Wills, Estates  
Realty • Commercial & Business

477-7553  
24 Hours

439-7203  
Evenings

## TASTEE TREAT

**NOW OPEN  
11 A.M. TO 10 P.M.**



Earl & Bev MacMillen  
Rte. 85, New Scotland

weekdays. The business office of the school district does a book inventory every June to determine what books need to be ordered for the next year. Bills for unreturned books will be sent out soon.

#### Button club active

The Half Moon Button Club of Albany, which meets regularly at the Bethlehem Library, had the largest attendance in its history at the June meeting when members of the Verd Mont Button Club returned a visit Half Moon members made to Vermont in May. Also present were representatives of the Hoosick Valley, Mohawk Valley and Mid-Hudson clubs. A slide presentation by Marjorie Heffernan and Doris Marone illustrated changes in button fashions. Luncheon followed the program.

#### Theft close to home

A Kiwanis gumball machine stolen from the hallway outside the door to police headquarters at Bethlehem town hall was recovered last week by Det. Charles Rudolph in the rear of the K-Mart store in Glenmont, according to a police report.

## HIGH SCHOOL SENIORS

*Prepare For:*

OCT. '81

COLLEGE BOARDS

# SAT



TEST PREPARATION  
SPECIALISTS SINCE 1938

ALBANY CENTER  
163 DELAWARE AVE.  
DELMAR  
439-8146

# ATTENTION MONEY MARKET FUND INVESTORS:

Now you can defer  
income taxes on earnings  
and shift free of charge to  
three other investment  
opportunities with...

- No sales charge on purchase payments\*
- Four investment options, including professionally managed money market and bond portfolios plus a guaranteed interest and principal account
- Transfers among the four options at no charge
- Deferred income taxes on earnings
- Guarantee against loss for your beneficiaries if you die during the accumulation period
- A monthly income guaranteed payable for life

Send us the coupon today and compare this financial planning product with anything else on the market.



## First Albany Corporation

41 State Street  
Albany, New York 12207  
(518) 434-4181

Attn: Arthur J. Henahan



*I want more complete information on Spectrum, including charges and expenses.\* Please send me free prospectuses of the MFS funds that relate to my investment interests indicated below and of the MFS/Nationwide Spectrum Annuity. I should read them carefully before I invest or send money.*

*I'm interested in:*

\_\_\_\_\_ a money market fund, \_\_\_\_\_ a corporate bond fund,  
\_\_\_\_\_ a guaranteed interest and principal account.

Name \_\_\_\_\_

Address \_\_\_\_\_

City \_\_\_\_\_ State \_\_\_\_\_ Zip \_\_\_\_\_

\*Withdrawals within the first two contract years and withdrawals in excess of 10% made during the following six contract years are subject to a 5% charge. There is no charge on withdrawals of purchase payments held for

## BETHLEHEM

### Sales tax issue draws replies

Up until last week the question of what to do with Albany County's \$12 million surplus had been, at least from the Bethlehem end of things, a Republican issue. But town Democrats got back into the game Thursday by invading the Republican's own hearing to claim that the town government has a worse record than the county on budget calculations.

The blast was delivered by Joseph Feller, a Democratic

committeeman who ran for town council two years ago. He touched all the bases, criticizing W. Gordon Morris of Bethlehem, the county legislature minority leader, for "blatant, sanctimonious posturing," and Town Supervisor Tom Corrigan for "budget manipulation."

The county Republicans are proposing to increase the local government share of county sales tax revenue from the present one third-two third split to 45 percent-55 percent. The Democrats, who were to air their plan Wednesday, maintain that a 40-60

split is more prudent.

Corrigan, who attended the hearing to voice his support for the Republican plan, dismissed Feller's statement as "political rhetoric." Corrigan and town Councilmen Edward Mocker and John Guertze are running for reelection this November. The Democrats have yet to designate their candidates.

Feller and Corrigan actually agree on one point—that the county sales tax is not a static source of revenue but tends to keep pace with inflation. In fact, said Feller, the revenue is increasing at a faster rate than the town wants to admit: last year Bethlehem budgeted for \$1 million in sales tax revenue and actually got \$1.5 million.

"Yet Bethlehem continues to spend all that increased sales tax revenue plus additional monies from local property tax increases," Feller said, noting the town's 15 percent tax hike for this year's budget.


"Based on the track records of the county and town, I have more faith that (County Executive James) Coyne and this body will return money to the people by reducing taxes

because historically they have done so. However, Mr. Corrigan and company in Bethlehem continue to raise local taxes in spite of receiving ever-increasing sales tax revenues. Everything indicates that the town would continue to spend every cent that it can get its hands on, and there is nothing to lead me to conclude that the town would ever reduce taxes."

Corrigan has said the increase in sales tax revenue is nearly balanced by the decrease in state revenue sharing funds. Bethlehem's 1981 budget totals \$4.8 million.

### PBA plans roast

The Bethlehem Police Benevolent Assn. is planning a steak roast and clam steam July 15 at Mosall's Grove, North Bethlehem, starting at noon with hamburgers, hot dogs and chowder. Clams will be available from 1 to 5 p.m., and the roast begins at 5:30 p.m. Tickets are \$23 and can be obtained from PBA President John Cox, roast chairman Paul Roberts or any Bethlehem police officer. There will also be a raffle and door prizes.



**Whirlpool**  
factory  
service

## APPLIANCE SERVICE CO.

456-2079      439-9705

A Division of  
Mr. Macs Appliance, Inc.

**BILL McGARRY**

## Spotlight Classifieds Work! WRITE YOUR OWN!

Minimum \$3.00 for 10 words, 25¢ each additional word.  
Phone number counts as one word.

### DEADLINE 4 P.M. EACH FRIDAY

- |  |   |
|--|---|
| <input type="checkbox"/> MISC. FOR SALE    | <input type="checkbox"/> REAL ESTATE FOR SALE |
| <input type="checkbox"/> HELP WANTED       | <input type="checkbox"/> REAL ESTATE FOR RENT |
| <input type="checkbox"/> SITUATIONS WANTED | <input type="checkbox"/> _____                |


I enclose \$ \_\_\_\_\_ for \_\_\_\_\_ words

Name \_\_\_\_\_

Address \_\_\_\_\_

Phone \_\_\_\_\_

**MAIL TO:** Spotlight, P.O. Box 152, Delmar, N.Y. 12054  
**OR BRING TO:** Spotlight, 125 Adams St., Delmar, N.Y.

## Planning a Great Future? Big Plans Ahead?

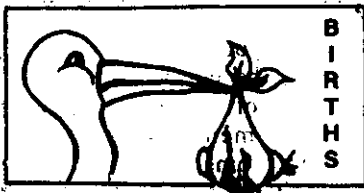


**Come Talk With The Friendly  
Full-Service Insurance Office**  
Personal Attention To All Your Needs

**OLOF H. LUNDBERG/  
TUCKER SMITH AGENCY**

159 Delaware Avenue, Delmar 12054  
**439-7646**

OPEN THURSDAY UNTIL 6:00 p.m.



#### Albany Medical Center

Girl, Jamie Lyn, to Mr. and Mrs. Kurt Larson, Slingerlands, June 2.

Girl, Janec Ann, to Mr. and Mrs. J.A. Rissacher, Slingerlands, June 4.

Boy, Robert Charles, to Mr. and Mrs. Robert Baldwin, Glenmont, June 5.

Girl, Caryn Elizabeth, to Mr. and Mrs. James Leonardo, Selkirk, June 11.

#### St. Peter's Hospital

Boy, David, to Dr. and Mrs. Norman R. Romanoff, Delmar, June 1.

Boy, Scott, to Mr. and Mrs. George W. LaMora, Selkirk, June 8.

Girl, Heather, to Mr. and Mrs. William Zinzow, Selkirk, June 9.

Boy, Christian, to Mr. and Mrs. Brian M. Summers, Glenmont, June 12.

#### Great golf ball caper

All did not go swimmingly for three Canadians who had outfitted themselves with

scuba diving gear for a foray into the pond at Tall Timbers Country Club in Slingerlands Thursday night. Spotted by an Albany County sheriff's deputy, the three men were arrested with 2,000 somewhat soggy golf balls in their possession.

The three, Gabriel Deschamps, Roger Denis and Anore Voghel, were arraigned in New Scotland Town Court on charges of criminal trespass, grand larceny and criminal possession of stolen property and were sentenced to 30 days in the Albany County Jail.

#### Who has combination?

For the third time this month, someone has taken cash from a locked safe at the Delmar Car Wash. Bethlehem police said approximately \$400 was taken sometime Saturday night with no sign of forcible entry. Detectives said \$75 was taken the night of June 15 and \$25 during the business day June 5.

#### Goldilocks 1981

Bethlehem police are searching for the person(s) who entered a vacant house on Delaware Tpk., Delmar, some-

time last week by breaking a door pane. Police said the intruder(s) swept the broken glass into a neat pile and then slept in a bed that had been made up. Nothing else was disturbed, police said.

#### Filling an order

Bethlehem police are looking for several youths who stripped gas tank caps from 10 cars and vans parked on Poplar Dr. and Mason Rd., Elemere, in the pre-dawn hours Saturday. The youths walked down Poplar to Mason, entered the woods, emerged on Mason and were last seen on Reed Pl.

#### BICYCLE THEFTS

June 20 - Adams Pl., driveway, two license.

June 19 - Arcade, Delaware Plaza, not registered.

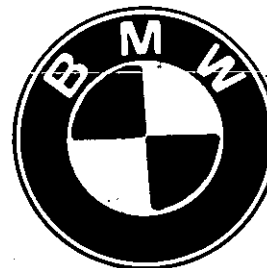
June 17 - Arcade, Delaware Plaza, not registered.

June 15 - Mosher Rd., not registered.

#### Oratory winner

Among recent award winners at Bethlehem Central High School was Michael Sheehan, who received a \$50 bond as the representative of the Blanchard Post American Legion at this year's Albany County Oratorical Contest.

**It's not a  
Good Deal —  
If it's not a  
Good Car!**



**Rabbit Diesel—  
Fuel Economy  
Champ  
4th Year in a Row!**

**BMW  
The Ultimate Driving Machine!**

#### Signature Edition Used Cars

Feature a Full Year — 12,000 mile Warranty!

A Good Selection of used VW, BMW,  
and other makes — foreign and domestic.

*Capital Cities  
Imported Cars*

Home of the 3 year — 100,000 mile  
VW and BMW

Rt. 9W

**463-3141**

Glenmont

## WHY SUFFER?

with  
**LOW BACK PAIN**

Chiropractic has shown that  
many of today's ailments are  
caused by  
**"NERVE PRESSURE"**



- FULL SPINAL EXAMINATION
- SPINAL BALANCE TESTS
- SPINE GRAPHS
- CHIROPRACTIC SPINAL ADJ.

**\$39**

MAJOR MEDICAL AND AUTO LIABILITY  
INSURANCE ACCEPTED

ALL NECESSARY X-RAYS WILL BE TAKEN  
ON THE INITIAL VISIT FREE OF CHARGE



**WE CARE**

**CHIROPRACTIC CENTER**

163 Delaware Avenue (Opposite Delaware Plaza)  
Delmar, New York 12054

Call 439-5077

**WE WANT TO BE YOUR CHIROPRACTOR**

## Four areas changed to AB zone

The Bethlehem Planning Board took a detailed look at six areas currently zoned B-Residential last week, and decided to change four of those areas to the new AB-Residential zone.

The areas, which must be approved by the town board

following a public hearing, are on Hudson Ave., Asprien Rd., the area to the rear of Delaware Plaza and east of Delaware Ave., and Kenwood Ave. east of Rockefeller Rd.

Chairman Edward Sargent opened the meeting with an apology for his actions at the June 2 meeting, when he had raised the possibility he would resign because of the board's failure to act on a proposal to change all six of the B-zoned areas to the recently-instituted AB status. AB zoning limits development to dwellings of four units or less; B-Residential zoning permits the development of apartments of more than four units.

This time, there was a difference in approach: at Sargent's suggestion each area was considered separately, and the board was able to deal with them in a business-like manner.

Planning consultant Ed Kleinke presented the areas one at a time, evaluating both the current zoning practice and the impact of the proposed AB-Residential change for each, followed by his recommendation. The board then discussed the area, questioning Kleinke to be sure the specifics were understood, and then voted.

Following Kleinke's recommendation, the board voted unanimously to approve changing Hudson Ave. from B to AB. The limited road system was cited as the reason for the change.

The area between Delaware

Plaza and Plymouth Ave. was left in the B designation, again following Kleinke's recommendation, though member John T. LaForte made it clear that a future motion to make the change to AB was not out of the question. Sargent said he would consider such a motion at a later date.

The third district under consideration, from the rear of Delaware Plaza and east of Delaware Ave. to the railroad tracks, was approved for rezoning to AB, again unanimously after LaForte made an unsuccessful attempt at obtaining A-Residential status for the site, and originally voted against the AB proposal, but later changed his vote.

A similar B to AB change was approved for the general Kenwood Ave. area east of Rockefeller road to the railroad and west to the vicinity of the Delmar By-pass. Though Kleinke's evaluation of both zoning options appeared to favor keeping B-Residential status due to highway access and limited conflict with existing development, he made no official recommendation due to family property interests in the area. Again the vote was unanimous.

Kleinke's recommendation held, however, for the next area considered, between the Thruway and Rt. 9w at the confluence with the Delmar by-pass. The board decided, again unanimously, that the current B-Residential zoning remain in place, taking into consideration the location's access to Rt. 9w and its proximity to the Albany urban area and interstate highway systems.

The planning consultant's recommendation for the sixth district—actually three small areas considered together—did not meet with unqualified approval as the others had. This was the area east of Asprien Rd. to the Thruway and north to Glenmont Rd. Kleinke proposed that each of the three areas remain B-

**BURT ANTHONY ASSOCIATES**

FOR INSURANCE



Burt Anthony

Inflation has a big bearing on you homeowner policy—it could cause you to be grossly underinsured. Call 439-9958 and let us bring you up-to-date.



208 Delaware Ave.  
Delmar

We'll make your  
motor  
sing



- Engine Tune-up
- Front End Alignment
- Automatic Transmission Service
- Modern Equipment
- Skilled Mechanics

**BAILEY'S GARAGE**

Oakwood Road, Elsmere  
Phone 439-1446



**ALICE A. BAKER, INC.**

'permanent hair removal center'

334 Central Ave., Albany 462-5678  
Mon.-Sat. 10 to 7 Free Parking

**FREE TREATMENT**

EST. 1972 Buy One — Get 2nd Treatment FREE\*

**FREE CONSULTATION**

Electrolysis — it doesn't hurt to look beautiful.

**Instantron:** New feather touch control, for the finest electrolysis treatment available.

**Unwanted Hair Destroyed Forever**  
• Face • Arms • Body • Legs • Eyebrows

\*NEW PATIENTS ONLY





Residential; LaForte noted, however, that Asprion Rd. proper is predominantly residential, whereas the rest of the area under consideration is largely undeveloped.

At this point Sargent, who, except for maintaining points of order, had been very quiet, entered the discussion. "I don't want anybody to get the idea that I'm proposing something here, but there's no reason we can't consider all three areas or any one of them separately, if someone would make a motion to do so," he said.

LaForte made the motion, subsequently carried, and the board unanimously approved changing Asprion Rd. to an AB-Residential district, leaving the rest of the area B-Residential, as per Kleinke's recommendation.

In other business, the board received an environmental impact statement it had requested for The Ogleview-Oglebrook development between McCormack Rd. and

Hudson Ave. The statement was submitted by Lindsay Boutelle, on behalf of Norman Burtmen, and was presented with a request for a zoning change in the area to Planned Residential Development. The board forwarded the statement to Kleinke for his recommendation.

Due to the July 4 holiday, the board will not meet again until July 14.

Vincent Potenza

#### Mailboxes damaged

Several dozen mailboxes on New Scotland Rd., Slingerlands, clustered at Mayfair Dr., North Helderberg Pkwy. and Carstead Dr. were opened and their contents examined sometime Thursday night, according to Bethlehem police. A number of the mailboxes were damaged, the report said.

*In Feura Bush, The Spotlight is sold at Houghtaling's Market.*



## George W. Frueh Sons

Fuel Oil • Kerosene  
Service Anyday — Anytime

**Mobil®**

436-1050

**Marino Baselice, M.D.**

announces the opening of his office  
for

**Internal Medicine**

at

**208 Delaware Avenue  
Delmar, New York**

starting July 1, 1981

Office Hours By Appointment

Mon., Wed., Fri. .... 10 A.M. - 6 P.M.  
Tue., Thurs. .... 6 - 10 P.M.

Sat. until noon

**439-1131**



*Phil Giaccone's*

### Complete Dinner Specials

**\$6.95 Specials**

Catch of the Day  
Stuffed Pork Chop  
Ham w/Hawaiian Sauce  
Liver w/onions or bacon

**\$7.95 Specials**

Baby Back Ribs  
Surf & Turf  
(Alaskan King Crab/Sirloin)

### \$9.95 Special - Ribs & Crab

Each dinner includes: homemade soup, salad bar, dessert & coffee  
Plus 39 other assorted items cooked to order at reasonable prices.

### Sat/Sun Breakfast Special

Ham, Bacon or Sausage  
All the Eggs, French Toast or  
Pancakes you can eat.  
Orange Juice and Coffee

**\$3.95**

Phil is pleased to announce that Jim Thompson, former Chef at Jose Caterers for 22 years, is bringing his culinary skills to Giaccone's.

**ALBANY MOTOR INN**  
(FORMERLY SCHRAFFT'S)

**462-2962**  
**RT. 9W, GLENMONT**

# \$2.00 OFF

on Haircut or Shampoo, Cut & Blow Dry.

Must bring coupon with you.

Expires June 30, 1981.

This coupon applies to  
Students ONLY.

**No Appointment Necessary**

**John's Normanside**

Beauty Salon

Delaware Plaza

**439-5621** new numbers **439-8518**

**Bang Up**  
**4th of July**  
**SPECIALS**

**FREE**  
\$25.00 Pool Test Kit  
(By Mail) with Purchase of HTH-Plus  
Bonus Booklet.

**hth**  
100 lb. HTH Granular Chlorine  
~~\$99.95~~ Reg. \$149.59

**pace**  
Concentrated Pool Chlorinating Tablets  
(10 lb. size)  
~~\$39.95~~ Reg. \$44.75

**ph MINUS**  
5-Lb. ph-PLUS®  
~~\$3.77~~ Reg. \$4.99

**ph PLUS**  
7-LB. GRANULAR PH— MINUS®  
~~\$4.66~~ Reg. \$6.49

**REBATE**  
HTH  
100 lb. \$8.00  
35 lb. \$4.00

**Closed**  
**Saturday July 4th**

**HILCHIE'S**  
**SERVITAR®**  
HARDWARE  
235 DELAWARE AVE.  
DELMAR, N.Y. 12054



## BETHLEHEM

### Old building will remain a school

The sale of the old Bethlehem Center school building in Glenmont, which had threatened to displace the Bethlehem Pre-school and possibly eliminate a fine old building, ended last week as well as anyone could wish.

The preschool was the winning bidder for its building, and the Bethlehem Central School District is \$70,150 richer. The school, which has occupied the building for five years, was the highest of four bidders, and its bid was \$12,000 above the appraised value of the building.

"We hope to keep things pretty much as they have been," said Eleanor D. Howell, who operates the school with Patricia Swanson. Mrs. Howell said some minor repairs are needed, but no major structural changes are contemplated.

Under the previous agreement, the school had paid all

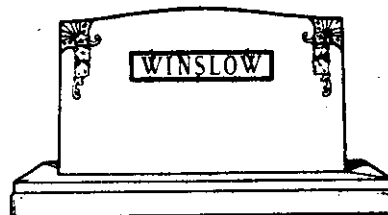
utility and upkeep expenses for the building, but had not paid rent. The Bethlehem Central Board of Education, intent on keeping this year's property tax increase to a minimum, decided this spring to sell the building.

That brought a protest from one Delmar resident, William "architectural gem" which should be preserved. "It was the nicest school in town—built by the farmers in that (then) little school district."

Board President Bernard Harvith noted that the sale means that "our real estate transactions are coming to a close here."

Wednesday's meeting was the last for board member Bertold Weinberg, who decided not to run for reelection this year. Weinberg looked back on his 10 years on the board as "a very, very exciting

### "SEE WHAT YOU BUY"



Since the early days of this Century Empire has carried the largest stock of Monuments and Headstones in the Capital District. Your greatest satisfaction in selecting a Memorial will come when you can see the actual Stone you select, all finished and ready to install on your lot after the lettering is added. Pictures can be deceiving! Choose a Memorial in the size you prefer from our large display of designs of distinction in granites of unsurpassed beauty and permanence.

### The Old Reliable EMPIRE MONUMENT CO.

Cemetery Avenue (off Broadway) Menands  
Entrance to St. Agnes & Albany Rural Cemeteries  
For Your Convenience Open 7 Days A Week  
Phone 463-3323 or 463-3077

experience for me."

"The things we're facing at the moment are obviously more real than the things we have achieved," Weinberg said. "But we should be proud of the things we have achieved."

The board set July 1 at the date for the organizational meeting, when new member Jed Wolkenbreit will take his seat.

In other business, the board approved a new agreement with the American Red Cross to use school facilities as emergency shelters in the event of a natural disaster.

#### To take command

Commander David E. Buerle of Delmar will formally take command of the Coast Guard Reserve Group Albany Saturday. Buerle, a reserve officer who has served in a number of positions on active reserve, will relieve Commander Jackson McLaughlin at a ceremony at 3 p.m. at the Administrative Building at the Port of Albany.

#### RUNNING

### Records tumble In road race

Visiting runners lowered the record in both the long-distance (7 miles) and short (3½ miles) courses in the second annual Father's Day runs from Hamagrael School Sunday, but the most impressive record was the size of the pack—370 runners. Of these 110 were juniors, 107 ran in the 7-mile race and 153 in the shorter run.

Mark Dalton of Siena College shaved a full 60 seconds off last year's time of 19 minutes flat by Bethlehem's Bill Street, who won the high school division at 3½ miles this year. The women's race went to Joanne Barroner. In the 7-mile run, Bruce Badden set a new record of 35:27.

#### On the cover:

Togetherhness was the word for the Father's Day race at Hamagrael. At left, Norm Drapeau Jr. runs with his dad. At right, Rita Whitney runs with husband Tom.

R. H. Davis

# JERICO

HELD OVER 2ND BIG WEEK!

Burt Reynolds Farrah Fawcett Roger Moore

Continuous **THE CANNONBALL RUN** From 8:45 PG

2nd Hit  
"ROUGH CUT"

## DRIVE-IN

RT. 9W-ALBANY-SELKIRK RD.

767-3398

### ADIRONDACK MOUNTAIN CAMPING DAGGETT LAKE CAMPSITE

15 Miles N.W. Lake George  
350 Acres-Wooded Sites

On Private Dagget Lake

Season • Week • Weekend

Glen-Athol Road  
Warrensburg, N.Y. 12885

(518) 623-2198

### Going On Vacation

Get the Best  
In Homeowners'  
Protection at a  
Reasonable price!!



**John E. Bergmann**

Insurance Agency

50A Delaware Ave., Delmar

439-1882



### ENGINE OVERHAUL

Save money wasted  
on additlon gas & oil.

Let our experts overhaul your engine.

**NY AUTO RADIATOR & BODY**

170 Madison Ave., Albany • 462-6409

*John's  
Stone Ends*

### Ray Lamere

will beguile, amuse and astound  
you with his swinging piano  
and singing wit Thursday  
thru Saturdays  
8 pm to 1 am.



One mile south of  
Thruway Exit 23  
Rt. 9W, Glenmont, NY

OPEN DAILY 5-11 pm—  
Closed Sundays—465-3178

### PLUMBING—HEATING—ELECTRIC

### J.W. BARTLEY & SONS

WATER PUMPS  
SALES & SERVICE

SOLAR SYSTEMS  
DESIGNED & INSTALLED

768-2230

768-2435

# 10% OFF

## ALL GLASS AND SCREEN REPAIRS WITH THIS AD

Coupon Expires July 3, 1981



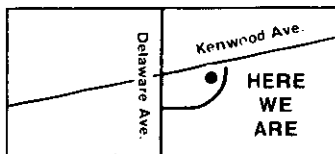
Mon., Tues, Wed & Fri.: 8:00a.m.-5:30p.m.,  
Thurs. 8:00a.m.-8p.m., Sat. 8:00a.m.-5:00p.m.

# BUD JONES

## SERVICE

### Complete Auto Repairing Road Service and Towing

14 Grove St., Delmar, NY



- Brakes • Lubrication
- Wheel Alignment & Balance
- Ignition Service
- Electrical • Air Conditioning
- Dyno Tuning
- Foreign Car Service
- Cooling System Problems
- Gas Tank Repairs

7:30 a.m. - 5:30 p.m. Monday - Friday  
Saturday & Sunday Emergency Road Service Only  
439-2725

# Houghtaling's Market

## "Country Style" Subs & Sandwiches Kegs of Beer

- Choice Meats • Groceries
- Cold Cut Platters • Produce

### COLD CUT PARTY PLATTERS Specially Prepared for any Occasion

**THIS WEEK'S SPECIAL**  
**Ham Sub \$1.99**

Rt. 32, Feura Bush Phone Orders 439-0028  
CLOSED SUNDAYS

## NEW SCOTLAND

### Trailer ban stays on a split vote

New Scotland's new town law banning any future mobile home that is not part of a trailer court will stand despite an effort by two Democratic councilmen to overturn the new ordinance.

When the matter came up at last week's joint meeting of the town board and planning board, it touched off a heated discussion in the steaming hearing room at town hall on the hottest night of the year. The 3-2 vote followed party lines and came just before a thunderstorm that pelted the building as the meeting was breaking up.

Councilmen Ken Tice and Herb Reilly said they were in favor of the regulations that prevailed before the adoption last January of the town's new comprehensive zoning ordinance. Under the old ordinance, lot owners could install mobile homes with the blessing of the zoning board of appeals following public hearings on individual applications.

The joint session was called to examine possible changes

in the new town zoning ordinance in fulfillment of a pledge made by Supervisor Steve Wallace to a public hearing audience last January. Wallace promised that the board would consider appropriate changes at a later date. At that time, the town board hastily adopted the ordinance immediately after the public hearing without reviewing the testimony. The explanation: the draft of the new ordinance had been worked on for nearly 10 years, the last two years intensively, and the board was anxious to get it on the books.

As it turned out, only two residents appeared at last week's conclave, and apart from the trailer motion, the only other action taken was to retain the one-acre designated minimum lot size for properties on the so-called Voorheesville aquifer in the Rt. 85A area. The village of Voorheesville had requested a three-acre minimum.

The board also voted to fix an inspection fee for trailer lots in mobile home courts.



Seafood Restaurant Inc.  
Rt. 9W, W. Cossackie, N.Y. 12192  
N.Y.S. Thruway Exit 21B  
1-731-9905

## LAST SUNDAY SPECIAL

until September 13

### Full Course Baked Chicken Cordon Bleu \$6.90

Ever been on your way out to dinner and then realized "Oh no-it's Monday!"?

## GOOD NEWS

We're open 7 days a week June 29-Sept. 7 11:30-9:30 P.M.



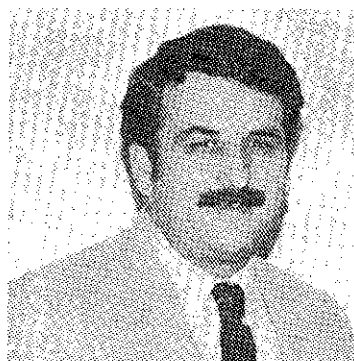
## GOP picks Graziano for board

New Scotland's Republican committee has nominated John A. Graziano, former Albany city GOP chairman, to make the run for the town board in November.

Graziano, 37, was city chairman when Carl E. Touhey, prominent Albany businessman and now a New Scotland resident, ran for mayor against Erastus Corning and polled the largest vote of any Republican opponent in Corning's 10 mayoral campaigns. Graziano himself ran against James J. Coyne, the present Albany county executive, for county clerk in 1973.

In New Scotland, Graziano will have a political base he didn't have in heavily Democratic Albany—an edge in party registration. New Scotland is one of four Republican towns among Albany County's 10 towns, but its GOP registration margin is the slimmest of the four.

Graziano, dean of continuing education at the New York College of Podiatry and the State podiatry profession's Albany lobbyist, has



John A. Graziano

pledged an aggressive campaign in the fall in an effort to strengthen the Republicans' slender 3-2 edge on the town board. Running with him will be incumbent councilman George P. Hotaling of Voorheesville. Their chief obstacle is Herbert Reilly, Jr. of Voorheesville, who is expected to seek a second four-year term when the Democratic slate is completed.

Graziano and Hotaling were nominated at the May gathering of the town's Republican committee at the residence of town chairman Frederick Edmunds, but no announcement was made. The committee, composed of

two members from each of New Scotland's six voting districts, filled out the slate by nominating incumbents for the other five places on the November ballot.

Running for reelection will be Stephen P. Wallace for supervisor, Corinne A. Cosac for town clerk, Donald L. Chase for town justice, Peter W. Van Zetten for highway superintendent and Edita Probst for tax collector.

Graziano grew up in Albany and is a graduate of Albany Academy and Villanova University. He holds a

master's degree from the College of Saint Rose. He was an admissions counselor at the State University of Albany prior to joining the State Education Dept. in 1969. He served for five years as executive secretary of the department's three licensing boards for veterinary medicine, optometry and podiatry before taking the position with the College of Podiatry. He lives on Bullock Rd., Slingerlands, with his wife, the former Aleda Crowningshield of Schenectady, and their three children, John, 13, Jason, 10, and Jessica, 6.

## KEEP COOL WITH AN AN OLD-FASHIONED

(Porch shade, that is.) We have green Basswood Shades for porch, patio or what have you, in stock, in sizes from 4 ft. to 12 ft. wide, ready to hang. They'll keep you cool for a lifetime with minimum care. **AND NOW YOU CAN SAVE 20%.** Installation available.

**DELMAR DECORATORS**  
Delmar 439-4130

*Ben Becker's*  
**Camp Nassau, Inc.**

TRANSPORTATION PROVIDED

**"WHAT DO WE HAVE IN COMMON?"  
WE BOTH WON'T ACCEPT LESS THAN  
"WONDERFUL" FOR YOUR CHILD.**

Yes, you have a choice where to enroll your child this summer. Only one camp offers 43 years of camping par excellence. Professional, progressive and individual programs ensure a quality summer experience that will long be remembered by your child. **Ben Becker's Camp Nassau** is a name you can trust.

### OVER 40 ATHLETIC & OTHER ACTIVITIES!

Such as swimming & scuba, boating, fishing, tennis, horseback riding, drama & crafts, pass punt & kick program, plus many more

Overnights—RN on duty—3 to 1 camper/counselor ratio

SEASON JUNE 29 - AUG. 21

(2 WEEKS MIN. ENROLLMENT)

BEN BECKER - Consulting Director

CALL 456-6929

AFTER 6 P.M.: 439-3650

JIM LOCKMAN - Director



Violins Repaired  
Bows Reaired  
Tennis Rackets  
Restrung & Regripped  
**C.M. LACY**  
3 Becker Terrace • 439-9739

## SUMMER HOURS

Wednesday-Saturday  
1-5 p.m.  
Crafts-Supplies-Gifts

*Forget-Me-Not*

135 Adams St.

439-1244



# City & County Savings Bank

May our high interest & free gifts be with you

# GALAXY GIFTS



**\$10,000 OR MORE**

**Your choice—free—with a deposit of \$10,000 or more.**

- (A) GE CLOCK RADIO...AM/FM digital
- (B) GE ZONAR® BURGLAR ALARM
- (C) BLACK & DECKER® DUSTBUSTER...cordless vacuum cleaner
- (D) BLACK & DECKER® JIG SAW...2 speeds
- (E) WARING FUTURA II BLENDOR®...push-button, multi-speed
- (F) SPRING BOUQUET STONEWARE...20-pc. dinner set



**\$5,000 OR MORE**

**Your choice—free—with a deposit of \$5,000 or more.**

- (G) COPPER BOTTOM POT SET...7 pcs.
- (H) LLAMA OVERNIGHT BAG...22", soft vinyl
- (I) PROCTOR-SILEX® TOASTER...2-slice
- (J) WESTCLOX MEN'S WATCH...17 jewels
- (K) WESTCLOX LADIES' WATCH...17 jewels

## About Your Gift Merchandise

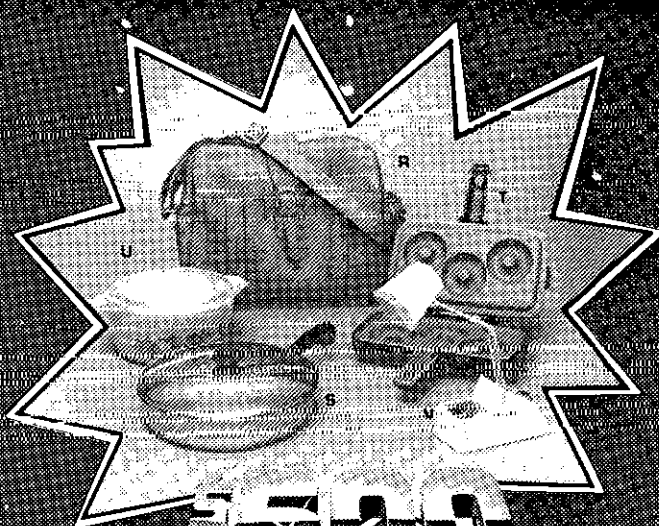
Our "Galaxy" offer is one gift per account. All gifts must be picked up at the bank. An alternate gift choice within the same category will be offered should demand exceed supply. Actual merchandise may vary slightly from the illustration. The bank assumes no liability to customers or other individuals for damages, direct or indirect. Warranties — express or implied — are the responsibility of the product manufacturer.

™ Trademarks of General Electric Company.  
 ® Registered trademarks: Black & Decker Manufacturing Company; Waring Products Division, Dynamics Corporation of America; Proctor-Silex, SCM Corporation. "Micromate" and "Pyrex" registered trademarks of Corning Glass Works.  
 ™ "Homestead" trademark of Corning Glass Works; "Panhandler" trademark of Proctor-Silex, SCM Corporation.



Reach for the stars with high-interest savings at City & County Savings Bank. Take home a free gift when you open a new savings account or add to your present account with a deposit of \$500 or more... or renew a savings certificate.

Your investment may be in passbook savings or time deposits. The deposit that qualifies you for a gift must remain on deposit with the bank a minimum of 12 months; or, in the case of a deposit of \$10,000 or more, a minimum of 26 weeks.



**\$500 OR MORE**

**Your choice—free—with a deposit of \$500 or more.**

- (R) TOTE BAG... soft vinyl
- (S) COPPER BOTTOM SKILLET... 10 1/4" diameter
- (T) GE TRIPLE TREAT® DONUT MAKER
- (U) PYREX® HOMESTEAD™ CASSEROLE... 2 1/2 qt., cover included
- (V) WINDSOR HIGH-INTENSITY LAMP



**\$1,000 OR MORE**

**Your choice—free—with a deposit of \$1,000 or more.**

- (L) SPRING BOUQUET STONEWARE... 4-pc. completer set
- (M) GE CUSTOM PORTABLE MIXER... 3 speeds
- (N) CORNING MICROMATE®... 10" skillet
- (O) GE AM/FM PORTABLE RADIO
- (P) PROCTOR-SILEX® PANHANDLER™
- (Q) ROBERTSHAW ELECTRIC WALL CLOCK

**DEPOSITS INSURED UP TO \$100,000 BY THE FDIC**

## Passbook Savings

Save for a bright future with Regular Savings or Day of Deposit to Day of Withdrawal Savings. With either type of account your deposits earn a 5.73% annual yield\*\* on an annual dividend of 5.50%, compounded daily and credited quarterly.

\*\*Annual yield is earned if principal and interest remain on deposit for one year.

## Savings Certificates with sky-high interest

### 2 1/2-Year Certificates

**12.94% 12.00%**

effective annual yield on interest per annum

MINIMUM DEPOSIT ONLY \$500

Rate Effective Tues., June 23 Mon., July 6

The effective rate at the time you buy your certificate is guaranteed for the full 30-month term. At City & County Savings Bank, your interest will be compounded daily and credited monthly. To realize the yield shown, principal and interest must remain on deposit for a full year. Substantial interest penalty is required for early withdrawal. This offer may be withdrawn without notice.

### Six-Month (26-week) Certificates at the latest money market rate

**14.906% 14.189%**

effective annual yield on interest per annum

MINIMUM DEPOSIT \$10,000

Rate Effective Tues., June 23 - Mon., June 29

Disclosure statements under the Truth-in-Savings Law are available at all offices of City & County Savings Bank.

The rate in effect when you buy your certificate is the rate you will receive for the entire six-month term of your investment. Your interest is credited monthly. To realize the yield shown, principal and interest must remain on deposit for a full year. Your certificate would have to be renewed at maturity at the interest rate shown to earn this yield. That rate may be higher or lower at time of renewal. Under federal regulations, compounding of interest during the term of this deposit is not permitted, and substantial interest penalty is required for early withdrawal. This offer may be withdrawn without notice.

**We're here on your account.**

**City & County Savings Bank**

ALBANY BETHLEHEM ROTTERDAM SCHENECTADY-NISKAYUNA



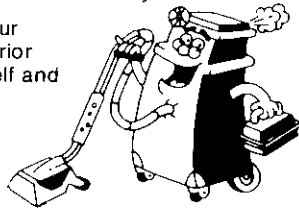
Member FDIC

## FAST, PROFESSIONAL RESULTS... You can do it yourself.

Rug Doctor make it easy to clean your house, auto, or upholstery with superior machine and chemicals. Do it yourself and see the results!

Rent today at:

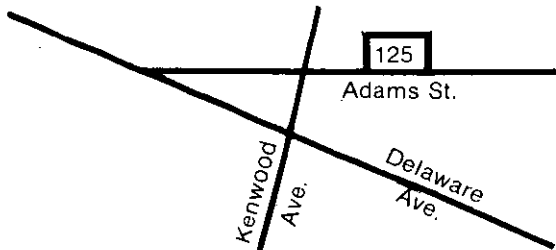
Roger Smith's  
Decorative Products Co.  
340 Delaware Ave., Delmar, NY  
439-9385



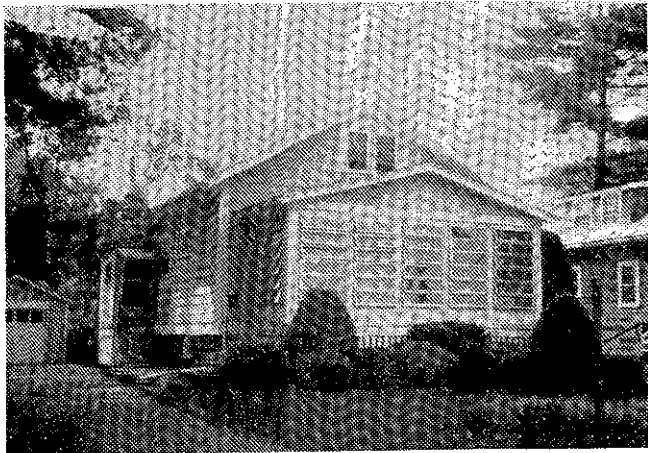
**Rug Doctor®**

# The Spotlight

and Newsgraphics Printing  
Have moved to their new home at  
**125 Adams St., Delmar**



## NEWLY LISTED



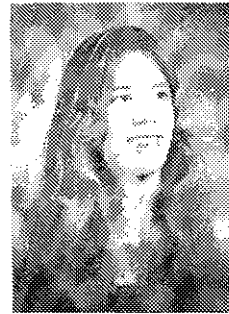
Two Bedroom Home with room for expansion.  
Convenient center Delmar location. Offered at  
\$47,500.

Call Karin Dagneau

**PAGANO**

Real Estate  
439-9921

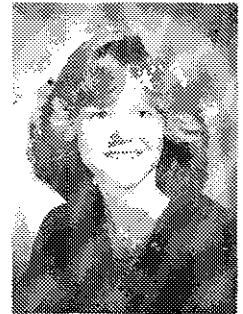
**WEBER**



Plummer



Allen



Murphy

## Voorheesville News Notes

Maryann Malark 765-4392

By attaining and maintaining an academic average of 96, Mark Allen has been named CO-Valedictorian of the 1981 graduating class of Clayton A. Bouton Junior Senior High School. Mark has been a member of the National Honor Society and Ski Club for three years, and he has participated in Bike Club, Philosophy Club and Model Congress. Mark will attend Dartmouth in the fall.

After twelve years of hard work, Julie Plummer has achieved the honor of being named Co-Valedictorian for the 1981 graduating class. As a sophomore, Julie was inducted into the National Honor Society, an organization in which she has held the office of co-president for the past two years. For the past four years, Julie has been involved in the annual Metho-

dist Bazaar. Her plans for the future include attending Cornell University where she will study pre-veterinary medicine.

Sandy Murphy with an average of 95 has achieved the honor of being selected Salutatorian. Throughout her high school years, Sandy has been recognized and selected by her peers as an exceptional student, leader, athlete and representative. This attitude is exemplified through the examination of her participation in student council for three years as a representative. Sandy plans to attend Cornell University where she will study biology.

The daily summer playground sponsored by the Village of Voorheesville has begun. The playground will be open daily from 9a.m. to 3 p.m. until Friday, Aug. 7 with the exception of Friday, July 3. The playground is supervised and activities such as basketball, kickball, croquet, volleyball and group games are provided for

## NEAL'S DINER

39 Voorheesville Ave.  
Voorheesville, N.Y.

**CLOSED** Week of June  
28 thru July 5, 1981  
**REOPEN** for Business  
July 6, 1981





The weatherman smiled on Michael Balfe, left, Mary Ellen Childs and their Voorheesville High School classmates at graduation ceremonies in the school yard Friday evening. John Piechnik, social studies teacher and varsity baseball coach, was commencement speaker.

Wendy Albert

youngsters seven years old and older. An arts and crafts program is also provided daily. On the last day, a field day will be run with events

such as three legged race, four shooting contests, kool-aid chug-a-lug and bubble gum blowing contests.



**Jacobsen  
Super Bagger**

Reg. \$399<sup>95</sup> Now \$349<sup>95</sup>  
**SAVE \$50<sup>00</sup>**

**L.C. SMITH**  
Lawn and Garden Equipment

154-B Delaware Ave., Delmar  
(next to Delaware Plaza) **439-9746**

# LOW RENTAL RATES

ANY KIND OF  
CAR YOU WANT



WE HONOR  
MOST MAJOR  
CREDIT CARDS



Renta-Car

As Low as \$13 per day

**MARSHALL'S GARAGE INC.**  
Rt. 9W RAVENA 756-6161

Prompt, Courteous, Reliable

FREE Estimates

## Service Call

The Diversified Repair People

Call Us for all Your Home Maintenance Needs

### Expert Repairs

Electrical • Plumbing • Drywall  
Hot Water Tanks • Clogged Drains  
Leaky Toilets/Faucets  
Tree Removal & Pruning  
NYS Certified Pesticide Applicators  
Glass/Screen Replacement  
Insulation  
438-8059 • 489-2167

Fully Insured

References

# Delmar Interior Designs

**Don't Move —  
Improve — It Pays!**

We offer designers and consultants for complete concepts as well as advice for the do-it-yourselfers.



**DELMAR INTERIOR DESIGN**  
Visit Our Showroom  
Division of Delmar Construction Corporation  
228-C Delaware Ave., Delmar

**439-5250**



## VOORHEESVILLE

### Remedial courses offered by school

Remedial programs in reading and mathematics will be held at the Voorheesville Central Schools again this summer. The program will run at the Voorheesville Elementary School from July 6 to Aug. 7, and at the Clayton A. Bouton High School classes will be held July 6 to Aug. 14.

The summer program in

Voorheesville is designed to meet individual student needs. Most of the children who attend have been referred by school faculty or staff members. However, parents may recommend a child for the remedial programs. Deadline for registration is Thursday. For more information call the elementary school, 765-2382, or the high school, 765-3314.

Two sessions in reading and mathematics will be held each day at the elementary school, the first from 9 to 10:30 a.m. and the second from 10:30 a.m. to noon.

At the high school the sessions will run from 8:30 to 10 a.m. for English 7 and Math 8 remediation and 10:10 to 11:40 a.m. for English 8 and Math 7.

High school students who have experienced difficulty in other areas may attend the Guilderland Central School District summer program or

the one offered by Albany Academy. Both session begin July 6. Students seeking enrollment in these out-of-district programs must have written permission from the Voorheesville guidance department.

School district residents attending a Voorheesville district program will not be charged a fee. No transportation is provided.



George A. Smith and Ellen Stewart

### Summer trash schedule

A revised schedule for trash collection has been instituted for the months of July and August with two pickups each week instead of one. Routes now being collected on Wednesday will have an additional pickup on Saturday. Routes collected on Thursday will have additional pickup on Monday. These additional collections will begin on July 1 and continue through the month of August.

### Advertising Correction

The Decorative Products Co. advertisement on page 22 in the issue of June 18, 1981 should read "10% Off All Glass and Screen Repairs With this Ad—Coupon Expires July 3rd, 1981."

Spotlight classifieds work!



**DISCOUNT  
PRICES ON  
WALLPAPER  
15-25% OFF**  
CHOOSE FROM THOUSANDS  
OF PATTERNS

**CLINICS & ADVICE  
FOR DO-IT-YOURSELFERS**

**VOGEL**  
WALLCOVERINGS, INC.  
411 KENWOOD AVE.  
DELMAR  
439-6335

### COUNSELING

Marriage - Divorce  
Parent/Child - Family  
Personal

Professionally Certified  
Counselors Experienced in  
Brief Treatment

Fully Accredited Agency  
Family and Children's  
Service

462-6531

12 So. Lake Ave. Albany

## STAR-LITE LOUNGE

Route 9W, Selkirk

767-9905

Parties of 8 or more, reservations requested.

### — SPECIALS —

Thursday, June 25

Pork Chops with Peppers ..... \$6.00

Friday, June 26

Baked Stuffed Shrimp ..... \$6.75

N.Y. Strip Steak ..... \$9.25

Saturday, June 27

Surf and Prime Rib ..... \$10.95

Veal Parmigian ..... \$6.50

### CLOSED SUNDAY

Monday, June 29

Fried Clams ..... \$5.25

Tuesday, June 30

Shrimp in a Basket ..... \$6.50

Wednesday, July 1

Southern Fried Chicken ..... \$5.00

All above dinners served with soup, antipasto, potato and vegetable, rolls and butter, dessert, coffee and wine.

Dinner served daily 4:30 to 10 p.m., Sandwiches til ?

PIZZA NOW BEING SERVED IN OUR LOUNGE!!!

THINKING OF HAVING A BANQUET? CHECK OUR PRICES.

— Accommodations for 175 people —

### Stewart-Smith

Mr. and Mrs. William M. Stewart, 17 Tierney Dr., Delmar, have announced the engagement of their daughter, Ellen, to George S. Smith, son of Mr. and Mrs. G. Hale Smith, Sackets Harbor.

Miss Stewart is a 1978 graduate of Bethlehem Central High School and is a senior at Indiana University, studying cello. Her fiance earned a degree in physics from St. Lawrence University. An August wedding is planned. The couple plan to live in Bloomington, Ind.

### Scholarship available

The Helderberg Business and Professional Women's Club has established a \$300 scholarship to assist one female business student each year. Applicants must have completed one year of college and be a graduate of Bethlehem Central, Voorheesville, Guilderland or Berne-Knox-Westerlo high schools. The applications must be submitted by July 1, and may be obtained by calling Anna Houghtaling, 439-0028. Funds for the scholarship came from the club's craft fairs and picture raffles.

### Sacred concert

The musical group Hosanna from the Philadelphia College of Bible will present a free sacred concert at the Bethlehem Community Church on Sunday at 7 p.m. The church is located at 201 Elm Avenue, Delmar, and the public is cordially invited.

## Celebrate 50th

Mr. and Mrs. Albert Shutter of Maple Ave., Slingerlands, recently celebrated their 50th wedding anniversary. The Shutters were married June 7, 1931, in the Slingerlands Community Methodist Church.

Albert is a charter member of the Slingerlands Fire Co. and is a past captain and assistant chief. Mrs. Shutter is a member of the fire company auxiliary and has been a worker at town hall. Both are active in the community.



**Mrs. Joseph M. Davis  
Josephine Canali bride**

The marriage of Josephine Canali, daughter of Mr. and Mrs. Amedeo Canali of Selkirk, and Joseph M. Davis, son of Mr. and Mrs. Sanford Davis of Westerlo, took place in a noon ceremony at St. Patrick's Church, Ravena, on May 30. Rev. Joseph F. Girzone officiated.

Nancie Jordan was maid of honor. Bridesmaids were

Lina Osgood and Gabriella Oliver, sisters of the bride, Tina DeCastro, cousin of the bride, Betty Sill, sister of the bridegroom, Valarie Davis and Patricia Payne. Andrea Davis, niece of the groom, was junior bridesmaid. Roger Davis, uncle of the groom, was best man. Ushers were Charles Wilderman, Charles Osgood, Paul Oliver, Dennis Boomhower, Tod Davis,

brother of the groom, and Jeff Davis, cousin of the groom. James Sill, nephew of the groom, was junior usher.

The bride is a graduate of the Ravena-Coetmans-Selkirk Central High School and is a law firm secretary. Her husband is a self-employed truck driver.

The reception was held at the Bethlehem Elks Lodge, Cedar Hill.

## Nursing student cited

Darlene Gifford of Voorheesville has been chosen by the nursing service department at Ellis Hospital as one of 10 students for the second annual summer nursing externship program June 15 through August 14. She is a graduate of Voorheesville High School and attends Hartwick College.

*Spotlight classifieds work!*



## Of Good Hamburgers

We bake our own hamburger buns—not because it's cheaper, but because it's better  
♥ *More Substance, more flavor, more gusto*  
♥ We've become a match-maker—we've brought together (like a marriage) the best bun in town and the best hamburger in town  
♥ made from U.S.D.A. Choice Western Steer Beef, ground fresh daily on our premises ♥ *As a wedding present* ♥ Buy any one of our hamburger features and get the second one at half price ♥

Offer good for a limited time, and valid only during lunch (11:30a.m.-2:30p.m.)

**Tool's**  
RESTAURANT  
*Home-style cooking at  
attractive family prices.*

283 Delaware Ave.  
Delmar

7 a.m. - 9 p.m. every day  
439-9111

## 'Let's start a growing friendship'

26 years combined professional  
experience in complete landscape  
design and construction

**Distinctive, Innovative, Professional**

- Complete Planting
- Treated wood decks
- Existing lawn renovation
- Topsoil, grading, bulldozing
- Revitalization existing landscapes
- Brick Bluestone patios - walks
- New lawns
- Selective pruning - shearing
- Insect and disease control

## J. WIGGAND & SONS

*Landscape Designers and Contractors*

**(518) 434-8550**

**Glenmont Rd., Glenmont, NY 12077**

*Design / Planting / Contractors*

- Nurserymen
- Interior Plantscapes
- Consultants

**Larry Bartkus**

**Mike Doherty**



On a quiet Elsmere street near shopping and bus, a charming Dutch colonial, four bedrooms, screened porch, 2 car garage. **\$69,900.**

Spacious and spotless colonial on an oversize lot with private deck overlooking the trees and lawn, located in lovely Oakleaf Acres, priced to sell. **\$119,900.**

An assumable mortgage, deep lot with garden, 20 x 20 living room, four bedrooms and den, all for **\$59,900** in Delmar.

Owner financing available for this Elsmere contemporary offering both a spacious deck and a lovely screened porch for summer living plus a community pool. **\$99,500.**

Beautiful decor and an assumable mortgage, a new kitchen with micro wave and large pantry unit, in Kenholm pool area. **\$115,900.**

Wood shake gambrel roof, flowers and trees, a compact, energy efficient Colonial cape, community pool and golf course available. **\$104,500.**

**Nancy Kuivila**  
REAL ESTATE, INC.  
**276 Delaware Ave., Delmar**  
**439-7654**



## DELMAR REFORMED CHURCH

(at Four Corners)  
386 Delaware Ave.

10:00 a.m. Sunday Worship and Church School  
Nursery and Crib Care

Robert A. Hess

Joyce B. deVelder

Ministers

Ample Parking

Worship with us!

439-9929

## COLOR FILM PROCESSING

*Good...and Fast!*

*We'll call you when they're back.*



# PAPER MILL

DELAWARE PLAZA

439-8123

We  
Use

Paper

COMPLETE  
EXTERMINATION SERVICE

# McFarland Pest Control

116 4th Ave., Albany

*Fogging bees and flies  
Roach clean out  
Termite Inspection*



• 463-6248 •

## Traditions live in old songs fest

The Old Songs Festival of Traditional Music & Dance, which will be held June 26-27 at Tawasentha Park, Route 146, in Guilderland, will host "a variety of traditions," according to its director, Andy Spence. "We have a little bit of everything," said Spence, a Voorheesville resident who is vice president of Old Songs Inc., The non-for-profit organization that is presenting the festival.

About 120 volunteers have been working with Spence since January on the festival, the only one of its kind in the area this year.

The festival will feature evening concerts on both Friday and Saturday, with several local performers.

On Saturday, between 11 a.m. and 6 p.m., there will be a variety of free events for children and adults. Sixteen different workshops will be held between noon and 4 p.m., with a special feature-

the Morris Dancing on the Green. Spence described this traditional English dancing by men as "an energetic spring ritual, a kind of visiting dancing." The men wear all white, except for the colorful hats and ribbons that each team has as its trademark.

Other special events include the Music Mobile for children and contra and country dancing. Contra dance, a New England dance with its roots in England, is performed in two parallel lines, with the men facing the women; it's type of dancing which can get "quite noisy and exuberant," said Spence. English Country dancing is "more sedate and flowing." But like traditional music, part of the appeal is that everybody can do it. "They just need comfortable shoes," said Spence.

In addition, there will be an open stage. Anyone wishing to perform can sign up at the open stage area. There will be a variety of craftsmen at the festival, who will both demonstrate and sell their wares. Spence emphasized that the selling is less important than the demonstrating. "Our craftsmen are there to share the process of how they arrive at their product."

Sharing seems to be the underlying purpose of the entire festival. "It's the passing of the music and the sharing of it that's important," said Spence. There aren't many places where this can be done anymore; thus, the purpose of this festival. Traditional music has always been important according to Spence. "Because it can be done in the home, it tends to survive. You don't need a Sequin Shirt to play it."

*Kristine Halloran*

*June's  
Stone Ends*

June  
Special

# Lobsters

# \$10<sup>95</sup>

Rt. 9W

Glenmont

One mile south of  
Thruway Exit 23

465-3178

## Heads music unit

Ann Brandon of Delmar has been elected president of District 6, New York State Music Teachers Assn.



The new sign, erected by the Old Songs festival committee, points the way to Tawasentha Park.

#### ELSMERE

### Bandit flees without loot

Bethlehem police have issued a teletype description of a white male about 25 wearing black gloves who vaulted into the cashier's cage at the Grand Union supermarket at Delaware Plaza, but fled empty handed when the cashier screamed.

Police said the intruder shook the door of the cashier's cage at 1:40 a.m. Sunday, and when he found it locked, stepped on a shelf, jumped over the glass partition and tumbled to the floor. Scrambling to his feet, he began rummaging through drawers and bags in the office, according to police.

When Catherine Feeley, the cashier, screamed, several

employees on the late-night shift ran toward the cage. The intruder then jumped back over the glass, ran from the store and disappeared on foot.

Detectives said nothing in the office or store was missing after the incident.

### Cooke still in coma

James Cooke, of Brookview Ave., Delmar, remained in a coma in critical condition at Albany Medical Center Monday following last week's explosion in an underground transformer vault in downtown Albany.

Cooke, 36, is chief of the Delmar Fire Dept. and a brother of Bethlehem Police Sgt. Leroy Cooke. A mechanic for Niagara Mohawk, he was doing maintenance Thursday on an underground trans-

former near State and Green Streets when the explosion occurred. He underwent surgery at the medical center.

A Niagara Mohawk spokesman said the cause of the explosion has not been determined.

### In youth concert

Four Delmar instrumentalists are among members of the Young Musicians Forum

presenting a concert Saturday, June 27, at 8 p.m. at the first Unitarian Church of Albany, 405 Washington Ave. They are Sue Felt, Elaine Hernandez, Erika Lawson and Henry Peyrebrune. The forum is composed of selected teenage musicians, and is sponsored by the Monday Musical Club of Albany. For information, call Kren Klevanosky, 765-3609.

## Lee's Chinese Restaurant

featuring fine

Cantonese, Mandarin, Szechuan, Polynesian and American cuisine  
LUNCH, DINNERS & TAKE-OUT  
DELICIOUS COCKTAILS

Mon-Thurs 11-10 Fri-Sat 11-10:30 Sun 12-10  
DELAWARE PLAZA 439-6662 439-9086

李苑酒家

### ELM ESTATES



Just listed! This immaculate four Bedroom Colonial offers:

- Large Living Room • Family Room with Fireplace
- Formal Dining Room • Oversized 1 Car Garage
- Custom Eat-in-Kitchen • Beautifully decorated
- Nicely landscaped

CALL FOR ADDITIONAL INFORMATION TODAY.

**PICOTTE**  
REAL ESTATE

439-4943  
205 Delaware Ave.  
Delmar, NY

The Gallery  
OF HOMES

We bring people home.

## LADIES 20% DISCOUNT SPECIAL

ENDS JUNE 30th!

Nautilus memberships  
Lifecycle memberships  
Tanning Hut memberships

STUDENTS: 1-2-3 month memberships—Also Summer Discounted

Call 439-2778 or Stop by  
NAUTILUS TOTAL FITNESS CENTER  
154B Delaware Ave.  
Delmar, N.Y. (Next to Delaware Plaza)



# Chez René

**FRENCH  
RESTAURANT**

**463-5130**

**Serving Dinner 5 to 10 p.m. Closed Sun. and Mon.**

**— GIFT CERTIFICATES AVAILABLE —**

**Rt. 9W, Glenmont, 3 miles south of Thruway Exit 23**

**For All Your  
Automotive Needs  
it's  
PROFESSIONAL  
AUTO PARTS  
AT THE FOUR CORNERS  
439-4931**



**Reilly and Son  
Funeral Home, Inc.**

**9 Voorheesville Ave.  
Voorheesville, N.Y.  
765-3633**

**HERBERT W. REILLY, JR., LICENSED MANAGER**

## Shop Talk visits

### Stuyvesant Plaza

*by Judi James*

The Cheese Connection, formerly of Robinson Square, has opened a store at Stuyvesant Plaza, a delightful place to resume our tour of this long-established and popular shopping center on Western Ave., Albany.

Owner Steve Lobell, a Slingerlands resident, has done a nice renovation, and has marvelous selections of cheese from all over the world. In addition, biscuits, crisp breads, spreads, etc. are sold here. And, of course, he continues to carry Mrs. London's baked goods. It's an unusually fine shop that invites the gourmet shopper.

Next door is Argersingers III (three because it is the third store of eight of a Gloversville based business.) There is some fine luggage to be found here. In addition, this discount store carries specially priced wearing apparel for both men and women.

Rosen's Pant Wheel has its origin in a 50-year-old firm from Central Ave. in Albany.

They feature pants of all kinds and sizes, specializing in those hard-to-find pants for the very tall man or the very stout. (they carry up to a size 50 waistline!) Mainly this store caters to the young man and to the young woman who now also wears jeans or carpenter pants. The store is owned by Karen and Harvey Scherzer.

Alfred's Fabrics needs no introduction to Spotlight readers familiar with their fine materials and service at Delaware Plaza. The Stuyvesant center is operated by Lawrence Alfred and is just a great store for the clever woman who sews. They have all types of fabrics and one wall section devoted to yarns of all weights and colors. There's a nice assortment of trims, (including maribou feathers for that dramatic look) and every item needed to make home fabrication a success and triumph.

Pearl Grant-Richman is another fantastic store. Owner Barry Richman, who bought

**School failure is  
one history a child  
should not repeat.**

### SUMMER PROGRAM

If your youngster has had reading or other learning problems, Summer is a good time to look into a Learning Center program.



### THE LEARNING CENTER

*A New Idea For Young People Ages 5 to 18*

**Individual Testing:** with special tutoring programs in Reading, Phonics, Spelling, Speech, Language Development, Study Skills and Mathematics.

- Albany ..... 12 Colvin Ave. .... 459-8500
- Clifton Park ..... Rts. 9 and 146 ..... 371-7001

# stuyvesant plaza

**sidewalk sale, saturday, june 27,  
9:30 to 6:00 P.M.**

out Pearl Grant's fine gift center, merchandises well and has many shops all within the one, each worthy of shopping time. There is a bath shop, a linen shop and a china and crystal shop. The printworks features beautiful designer fabrics that may be purchased by the yard or stretched for wall hangings. The Eat-Your-Heart-Out Kitchen Dept. will make you do just that. There are kitchen gadgets galore and necessities and niceties for the gourmet cook. There is a Jack Daniels Parlor Car where fine gifts for gentlemen are featured, and one very special and philanthropic

department is called Items of Note. Here one finds every item music oriented and all proceeds go to aiding the Empire State Youth orchestra to which Richman is dedicated. Incidentally, Grant Richman will be open seven days a week from now on. Richman also is vice president of the merchants association at Stuyvesant.

The Half Size Shop is a comfort and blessing to the larger woman. They specialize in the pretty polyester and cotton dresses she needs. Gone are the drab colors...in this shop they feature the

**SPECIAL FOR SIDEWALK SALE**

**CURRENT BEST SELLERS  
FICTION AND NON FICTION  
HARDCOVERS 99¢—\$2.99**

(CIRCULATED IN LIBRARY)

**Book House**

Stuyvesant Plaza  
489-4761

**DINAPOLI**  
OPTICIANS | SINCE 1940

**25% OFF**

Ray-Ban, Dior, Logo-Paris  
And Optyl Sunglasses

AT OUR STUYVESANT STORE WE ARE:

Open Saturdays during Summer  
10 to 6

Open Evenings until 9

AND OUR OTHER LOCATIONS:

1 Delaware Plaza, DELMAR  
Mon. - Fri. 9a.m. - 5:30 p.m.  
Tues. evening 7 - 8:30 p.m.  
439-6309 / 439-9191

457 Madison Ave.  
ALBANY  
Mon. - Fri.  
9 a.m. - 5:30 p.m.  
449-3200

**Crafts Plus**  
*Hortoncraft*

So  
Much More  
Than  
A  
Great  
Craft Store

**SAVE 10%-50%  
& More  
OUR SIDEWALK GOES  
TO THE BACK OF THE  
STORE**

CRAFT PLUS  
A To Z  
ARTS & CRAFTS  
STUYVESANT PLAZA

Mon.-Fri. 10-9  
Sat. 10-6  
Sundays 12-5  
438-7679

**LADY  
MADONNA**  
maternity boutique

**The  
Sale  
Is On!**

**30%-50% OFF  
THE ENTIRE  
SPRING/SUMMER  
COLLECTION**

**Starts Thurs. June 25**

Special \$5.00 and \$10.00 Racks for Sat. June 27th  
Sidewalk Sale

**STUYVESANT PLAZA**



482-8158



SELECTED CIGARS  
**25% OFF**

SELECTED TOBACCO  
**\$3.95 lb.**

HANDCARVED PIPES  
**40% OFF**

ACCESSORIES  
**1/3 OFF**

(lighters, humidors, pouches, stands,  
etc.)

All items greatly reduced  
(except for cigarettes)



**J. P. O'Leary  
Tobacconist**

STUYVESANT PLAZA  
ALBANY

pretty pastels and shades that make a woman feel good. Lynn Potter is the manager.

Argus Travel has its main office at Stuyvesant and has lots of special cruises and trip brochures available to the traveler. Frank Albright is the owner. They are the only member of "giants" in this area and do a commendable tour and travel business.

J.P. O'Leary Tobacconist is an experience. Mr. O'Leary's store is wonderfully odiferous, smelling of fine tobaccos that fill large glass domes and can be mixed to the smoker's pleasure. He has a huge walk-in cigar humidor at the back of the store where domestic and foreign cigars are to be found. Pipes, cigarettes, and anything to do with smoking and tobaccos as well as those pastel cocktail cigarettes abound here.

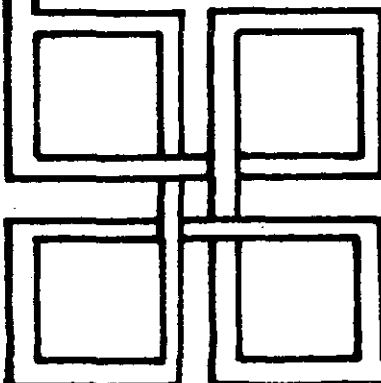
Lerner's Sandwich Shop and Lounge is a popular place. Gardner Lerner started with a delicatessen. Steven Lerner has enlarged this deli

**glennpeter  
jewelers**

**Stuyvesant Plaza 489-0549**

**50% OFF on all Bulova Watches  
35% OFF on all others**

**"start a tradition. . ."**





and added tables and chairs for the restaurant where service is quick and good. They feature 18 assorted triple decker sandwiches made from bread fresh out of the oven. They have home made cheese cake and an impressive line of smoked fish for bulk purchases. All food is good and they do a good take-out business, too.

Everywhere Shop Talk went at Stuyvesant Plaza the merchants spoke of the friendliness of the place. "It's usually the same customers who come in. It's a large center but it has a small-town quality which makes it easy to shop here and a fine place to work." That was the consensus of these merchants, who pull together to make a successful shopping center. They have sidewalk sales in

June and in August and special promotions at holiday times. Buses run directly into the shopping area on a regular basis from Albany, and a private bus run by William Morris makes several trips a day from the Guilderland area.

Shop Talk enjoyed shopping for you at Stuyvesant Plaza. Possibly we'll meet you there some day, for we know many shoppers from the Delmar, Slingerlands and Voorheesville area are regular customers.

*Spotlight classifieds work!*

### **PAYING CASH**

**Collector Seeks  
Rifles and Shotguns**

Both recent and older models  
**489-7254**

## **Save up to 65% at Casual Set's SIDEWALK SALE**

Cotton Skirts *Reg. to \$22.00* .... **\$10.00**

Tee Tops *Reg. to \$12.00* ..... **\$5.00**  
Cotton Knits and Terries

Sunback Dresses *Reg. \$22.00* ... **\$9.00**

Entire Stock Raincoats ... **1/2 Price**

Fall Sweaters *Reg. to \$48.00* . **\$5 to \$10**

Plus many, many other reductions both on the sidewalk and inside the Store!

**STARTS PROMPTLY AT 9:30 A.M.  
TO 6:00 P.M.**

*Our only  
store!*

  
**Casual Set**

Stuyvesant Plaza—482-7136—Open Daily to 9  
Master Charge—Visa

## **LERNER'S DELICATESSEN & LOUNGE**

### **ENJOY A HOT KNISH AT THE SIDEWALK SALE**

or stop in and enjoy our delicatessen specialties.

**"Experts In Catering For Years"**  
*Party platters arranged for all occasions*

- TRIPLE DECKERS
- HOT PASTRAMI
- CORNED BEEF

- KOSHER FRANKS
- KNISHES
- DELI SALADS

**489-4295**

*Stuyvesant Plaza*

### *Deli Hours*

Mon.-Fri. 10 to 9  
Sat. 10 to 6

Lounge open until  
at least 11 p.m.

## **SIDEWALK SALE SUPER SPECIAL!**

**DECORATOR  
THROW PILLOWS** **\$5**

*Reg. to \$14.95*

**MOSTLY IN WAVERLY & SCHUMACHER FABRICS!  
ZIPPERED**

**MANY OTHER SIDEWALK SALE BARGAINS!**

**FREE  
SHOP-AT  
HOME  
SERVICE  
489-4795**

**Marcel's**  
**DECORATORS**



**STUYVESANT PLAZA**

## SOCCER

### New sport booms in Bethlehem

Three years ago, Bethlehem caught soccer fever when George and Connie Tilroe founded the Bethlehem Soccer Club. Since then the club has more than tripled its membership to over 330 boys and girls, and the sport has become contagious in a town which has traditionally been dedicated to the Dolphins, Tomboys, Little League and Pop Warner.

"We started the club so that kids could move from their backyards onto a field to play with other kids who liked the sport," Connie Tilroe said. "It's a very safe game, and people of any size can play."

With the help of club Vice-President Charles Guinn and Treasurer Bob Guarino, the Tilroes began the then all-boys' club with only one team in each of its six age groups, ranging from 6 to 19 years of age. There are now 27 intra-

club teams. Nine of these travel to compete with teams from other areas, and one is an all-girl's squad.

Presently, the young athletes are preparing for their end-of-season round robin tournament day to be held Saturday from 9 a.m. to 2 p.m. at the Bethlehem Central High School fields. However, the travelling teams will still be active in July, when they will be playing the last of their 16 games.

Coached by parents who attended special clinics on coaching techniques, the Bethlehem Soccer Club has produced its share of stars. The 1981 season saw ten of its fancy footworkers named to the Capital District All-Star team, while two other Bethlehem ball handlers were chosen for the prestigious Select Team representing southern New York State.

Although a relatively small team, the Bethlehem club was one of the pioneer members of the Capital District Soccer



Young soccer players go at it Sunday at Bethlehem Central High School. *R.H. Davis*

League, which promotes similar clubs all over the Albany area. Undoubtedly, soccer's contagious appeal will make Saturday's tournament seem like the World Cup to Bethlehem fans. *Julie Ann Sosa*

#### TRI-VILLAGE LITTLE LEAGUE

Standings June 21

##### SENIOR LEAGUE

	W	L		W	L
Manu. Han.	6	1	Starwood	4	3
Handy Andy	5	1	CPM	0	5
O. Corning	3	2	Big M	0	6

##### MAJOR LEAGUE

American	W	L	National	W	L
Roberts	8	4	Main Care	12	0
Col. Toyota	7	5	Gen. Elec.	6	6
CYC Realty	7	6	Spotlight	6	6
Meyers Bike	5	7	Farm Fam.	6	7
Price Green.	1	11	Andriano's	3	9

##### INTERMEDIATE LEAGUE

American	W	L	National	W	L
Del. Honda	10	2	Keystone	5	7
Farm Fam.	10	3	Main Care	5	7
Paper Mill	9	3	Nautilus	2	9
Royce Day	9	3	Serv. Mstr.	2	10
Buenau's	8	4	Gen. Elec.	0	12

##### JUNIOR LEAGUE

American	W	L	National	W	L
Muia Rity.	9	0	Ans. Service	8	3
Prof. Auto	8	3	Guild. Agcy.	4	4
Del. Printers	6	5	Klersy Rity.	4	5
Sutters Mill	4	5	Klersy Bldr.	4	6
Cap. Kitch.	4	7	Germann's	3	5
Pat & Bob's	4	7	W'makers	1	9
Ties—Guilderland	3	3	Agency	3	3
Realty 2, Sutter's 2, Muia, Germann's, Weathermakers.					

#### BETHEHEM SOCCER CLUB

Under 10—Bethlehem A 0, Bethlehem B 0; Bethlehem A 1, Troy 1; Rotterdam 5, Bethlehem B 2; under 12—Clifton Park A 10, Bethlehem A 0; Bethlehem A 3, Waterford 0; Bethlehem B 10, Rotterdam 0; Bethlehem B 4, Colonie 0; under 14—Bethlehem A 5, Rotterdam 0; Guilderland 7, Bethlehem B 0; Clifton Park 3, Bethlehem B 0; under 16 boys—Colonie 2, Bethlehem 0; under 19—Bethlehem 1, Niskayuna 0 (forfeit).

#### CHURCH SOFTBALL

Results June 18

Delmar Reformed 21, Beth. Comm. 16.  
Albany 18, New Scotland 7  
Presbyterian 23, St. Stephens 3  
Glenmont 19, Methodist 3  
Voorheesville 23, Bethany 7  
Colonie 8, Cluster 7  
St. Thomas 24, Knox 2

Standings June 21

	W	L		W	L
Cluster	7	1	Methodist	3	4
St. Thomas	7	1	Albany	3	5
Colonie	6	1	B. Comm.	2	5
Glenmont	6	1	Bethany	2	5
Del. Pres.	5	2	Del. Reform.	2	6
New Scot.	5	3	St. Steph.	1	7
Voorville	3	3	Knox	0	8
Wynants.	3	3			

#### VOORHEESVILLE BABE RUTH

Standings June 21

	W	L		W	L
St. Matt.	3	0	Spotlight	3	2
Berne Yanks	3	1	Rod & Gun	1	4
Kiwanis	2	1	Berne Mets	0	5
B. Dodgers	3	2			

#### BETHEHEM BABE RUTH

Standings June 21

	W	L		W	L
Skippy's	5	2	Blue Cross	3	4
Nat. Savings	4	2	Main Care	1	5
Gen. Elec.	4	4			

#### BETHEHEM TOMBOYS

Standings June 21

	W	L		W	L
*Masonic	5	0	Healy Real	1	3
Kuivila Rity.	4	1	Channel 10	1	4
Tri-Vil.	3	2	Beth. Elks	0	4
Intermediate	W	L	Minor	W	L
*Sutters Mill	5	0	*Denby's	2	0
Riccardos	4	2	Farm Fam.	2	0
Att. Cement	3	2	Century 21	2	0
BPW	3	3	G.E. Plastic	1	1
Vogels	2	4	Spotlight	0	1
Dunston	2	4	Sportshoes	0	1
Buenau's	1	5	Brockley's	0	2
			Del. Lanes	0	2

\* First half champion

*In Feura Bush, The Spotlight is sold at Houghtaling's Market.*

## UNIQUELY WEEKLY

Subscribe to

# The Spotlight

for professional news coverage  
of Delmar, Slingerlands, Voorheesville, Glenmont  
and nearby communities.

**\$7.50 a year—\$13.50 two years**

(within Albany County—elsewhere \$9.00 a year)

THE SPOTLIGHT, 125 Adams St., Delmar, NY 12054

Please enter my ☐ renewal ☐ subscription to The Spotlight

I enclose ☐ \$7.50 for one year ☐ \$13.50 for two years  
☐ \$9.00 outside Albany County

NAME \_\_\_\_\_

STREET \_\_\_\_\_

P.O. \_\_\_\_\_ ZIP \_\_\_\_\_

## LEGAL NOTICE

### NOTICE OF PUBLIC HEARING ON RESTRICTIONS IN VACANT FLOODPLAINS AND WETLANDS TO THE USE OF SEWERAGE FACILITIES AIDED BY GRANT FOR USEPA-NYSDEC PROJECT C-36-1096 TO THE TOWN OF BETHLEHEM

NOTICE IS HEREBY GIVEN that a public hearing will be held by the Town Board of the Town of Bethlehem, Albany County, New York at the Town Hall, 445 Delaware Avenue, Delmar, New York, on the 12th day of Aug. 1981, at 7:30 p.m. to present to the public Amendment No. 1 to the Wastewater Facility Plan as required by the USEPA under a Special Condition of the Grant Agreement document for the Step 2 Joint Phase of the NYSDEC-USEPA Joint Wastewater Facilities Project No. C-36-1096.

Under the USEPA Step 2 Grant Condition for this project, the Town of Bethlehem, as grantee, was required to submit and has submitted to the USEPA and NYSDEC an approvable facilities plan amendment including maps that clearly delineate all specific vacant parcels of land within the facilities planning area that are partially or wholly within the 100-year floodplain as defined by the U.S. Department of Housing and Urban Development (HUD), or within wetlands as defined by the U.S. Fish & Wildlife Service.

As a condition of grant acceptance, the grantee was required to agree that for a period of 50 years from February 25, 1981, no sewer hookup or other connections to the sewage collection system included in the scope of this grant will be allowed or permitted, so as to allow the discharge of wastewater from any building, facility or other construction on any parcel of land within any wetlands or within the 100 year floodplain, which land parcel as of February 25, 1981 was undeveloped (i.e., upon which no building, facility or other construction had been erected or placed) unless approved in writing by the Regional Administrator.

The Facilities Plan Amendment No. 1 delineates vacant parcels which will be affected by the Special Grant Condition. The Town of Bethlehem, as grantee, will therefore conduct a public hearing on Aug. 12, 1981, not less than 45 days from the date of this notice as required by the Grant Condition. Copies of the Wastewater Facility Plan Amendment are available for inspection at the office of the Town Clerk. The public hearing record will remain open for 30 days after the hearing to allow for additional public input.

BY ORDER OF THE TOWN BOARD  
OF THE TOWN OF BETHLEHEM  
MARION T. CAMP  
Town Clerk

Dated: June 12, 1981

### NOTICE OF SPECIAL MEETING OF MEMBERS

To the Members of the  
Bethlehem Soccer Club, Inc.

Notice is hereby given that a Special Meeting of the Members of Bethlehem Soccer Club, Inc., will be held at the Bethlehem Central High School on the practice football field, 700 Delaware Avenue, Delmar, County of Albany, New York, on the 27th day of June, 1981 at 12 o'clock noon, for the purpose of voting on the following propositions:

## LEGAL NOTICE

1. The amendment of the certificate of incorporation to conform to certain requirements of the Internal Revenue Service for tax-exempt not-for-profit corporations. The amendments shall read as follows:

a) Paragraph "2" of the Certificate of Incorporation describing the corporation is amended by deleting therefrom the language "except to the extent permitted under the statute."

b) Paragraph "3" of the Certificate is amended by adding to the corporate purposes the additional provisions:

Notwithstanding any other provisions of these articles, the corporation is organized exclusively for one or more of the following purposes: religious, charitable, scientific, testing for public safety, literary, or educational purposes, or to foster national or international amateur sports competition (but only if no part of its activities involve the provision of athletic facilities or equipment), or for the prevention of cruelty to children or animals as specified in Section 501(c) (3) of the Internal Revenue Code of 1954, and shall not carry on any activities not permitted to be carried on by a corporation exempt from Federal income tax under Section 501(c) (3) of the Internal Revenue Code of 1954.

No part of the net earnings of the corporation shall inure to the benefit of any member, trustee, director, officer of the corporation or any private individual (except that reasonable compensation may be paid for services rendered to or for the corporation, and no member, trustee, officer of the corporation or any private individual shall be entitled to share in the distribution of any of the corporation assets on dissolution of the corporation).

No substantial part of the activities of the corporation shall be carrying on propaganda, or otherwise attempting to influence legislation (except as otherwise provided by Internal Revenue Code Section 501(h), or participating in, or intervening in (including the publication or distribution of statements), any political campaign on behalf of any candidate for public office.

2. Such other matters as may be properly brought to the attention of the corporation at this time.

By order of the Board of Directors.  
GEORGE D. TILROE  
President

Delmar, New York  
June 4, 1981

(June 25)

### NOTICE OF FORMATION OF LIMITED PARTNERSHIP

NOTICE IS HEREBY GIVEN, pursuant to Article 8 of the Partnership Law of the State of New York, that Allied World Resources, Inc., 5 Loudon Lane North, Loudonville, County of Albany, State of New York, as general partner, and National Commerce Exchange, Inc., of 6501 Loisdale Court, City of Springfield, State of Virginia, as limited partner, have formed a limited partnership for the maintenance of a clearing house for reciprocal trade and organized barter, which is to have its principal place of business in the County of Albany, State of New York. The name of the limited partnership is National

# Newsgraphics

--- HAVE YOU HEARD?  
that Newsgraphics

has complete Composition  
& Printing Facilities

- Phototypesetting
- Design and Layout
- Offset Camera
- Advertising
- Original Illustration
- Offset Printing



Newsgraphics  
of Delmar, Inc.

(Publisher of The Spotlight)

125 Adams Street  
Delmar, NY 12054

439-4949

439-4040

## The finest in NEW & REBUILT VACUUMS

### High Trades on New Vacuums

• Eureka • Hoover • Electro Hygiene • Filter Queen

### Vacuum Repairs and Tune-Ups — Belts, Bags, Motors

Complete Line of Commercial Vacuums  
Parts, Accessories and Service

## LEXINGTON VACUUM CLEANER REBUILDERS, INC.

562 Central Ave Albany, NY 12206

**482-4427** Open Tues. - Fri. 8:30 - 5:30  
Thurs. Till 8; Sat. 8:30 - 4:00

Closed Mon.



## LEGAL NOTICE

Commerce Exchange of the North Atlantic.

The partnership is to exist for an indefinite term.

The amount of cash and a description of, and the agreed value of, the other property contributed by each limited partner is \$2,000.00.

The additional contributions agreed to be made by each limited partner and the time at which or the event on the happening of which they shall be made are as follows:

If any Partner shall, in excess of his agreed contribution to the capital of the Partnership, advance any monies to the Partnership, the amount of any such advance shall not be an increase of his capital contribution or entitle him to any increase in his share of the distributions of the Partnership, but the amount of any such advance shall be an obligation of the Partnership to such Partner and, unless otherwise provided and agreed, shall be repaid to him with interest at the maximum legal rate, except that interest shall not be paid on money advanced or expended prior to the formation of the Partnership.

The time when the contribution of each limited partner to be returned has not been agreed to.

The share of the profits or the other compensation by way of income which each limited partner shall receive by reason of his contribution is as follows: National Commerce Exchange, Inc. shall receive ten percent (10%) of the profits of said partnership.

The right of a limited partner to substitute an assignee as contributor in his place, and the terms and conditions of the substitution, are as follows:

The Limited Partner shall have the right to assign, encumber or otherwise dispose of its interest in the Partnership without the consent of the General Partner(s); provided, however, that the General Partner (s) shall have the absolute right and option to purchase the share of the Limited Partner at any time and from time to time as follows:

(1) During the first twelve month immediately subsequent to the execution of this Agreement, the value of the Limited Partnership share shall be equal to the value of the Limited Partner's original contribution.

(2) During subsequent twelve month periods the value of the Limited Partnership share shall be the value of the Limited Partner's original contribution or 10% of the net worth of the Partnership, whichever ever is greater.

(3) The purchase price shall be paid entirely in cash or by certified check.

(4) In the case of the assignment of a Limited Partner's Partnership interest at any time other than the end of the accounting period of the Partnership, the distribution shares of the various items of Partnership income, in respect of the Partnership interest so assigned, as computed for Federal Income Tax purposes, shall be divided between the assignor and assignee in the ratio of the number of days in the taxable year before and after the assignment.

The right of the partners to admit

## LEGAL NOTICE

additional limited partners is as follows: The General Partner(s) shall not add additional Limited Partners to the Partnership without the express written consent of the Limited Partner.

The right of the remaining general partner or partners to continue the business on the death, retirement, or insanity of a general partner is as follows:

In the event of retirement, death or adjudication of insanity, incompetency or bankruptcy of a General Partner, any remaining General Partner or, if such remaining General Partner declines to do so, the Limited Partner shall have the right, but not the obligation, to elect to form a new Partnership to continue without interruption the business of the Partnership. In the event that such election is exercised by any remaining General Partner, any remaining General Partner shall promptly give notice to the Limited Partner stating in substance that the remaining General Partner has elected to continue the business of the Partnership. In the event that such election is exercised by the Limited Partner, then the Limited Partner shall, as speedily as possible, proceed to select an individual who shall agree to be the Substitute General Partner or Substitute General partners, as the case may be, and shall make proper arrangement and provision for the liabilities of the Partnership. Upon the election of the remaining General Partner to continue the Partnership business, or upon the selection of the Substitute General Partner or Substitute General Partners, as the case may be, written notice of intent to purchase their interest in the Partnership of the withdrawing General Partner shall be served by any remaining General Partner or the Substitute General Partner, or each of the Substitute General Partners, as the case may be, on the withdrawing General Partner, or on the executor, administrator, or personal representative of the withdrawing General Partner in the case of the death or adjudication of insanity, incompetency, or bankruptcy of the withdrawing General Partner.

In witness whereof, the undersigned have executed this certificate this 12 day of April, 1981.

### GENERAL PARTNERS

Allied World Resources, Inc.  
by: M.J. Marshall, President

### LIMITED PARTNER

National Commerce Exchange, Inc.  
by: Robert G. Munn, Secy./Treas.

(June 25)

**Need help with your party?**

Call

### Personal Dining Service

- Home Weddings
- Showers
- Luncheons

Dinners — Hors d'oeuvres  
439-2642

# WIN A FREE HUFFY 10-SPEED "TREAT MACHINE"

ENTER

**Dairy Queen**

## "WE TREAT YOU RIGHT!" SWEEPSTAKES

Imagine winning this terrific 26" Huff "Treat Machine" bicycle-with its snappy customized white finish, "Treat Machine" is the local prize to be given away to some lucky person at every participating "DAIRY QUEEN" store. No purchase is necessary. Pickup Official Entry Forms at your participating

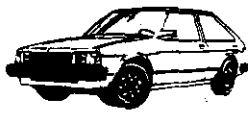
"DAIRY QUEEN" store which also enters you in one of our 5 big National Sweepstakes.



### 5 NATIONAL SWEEPSTAKES WITH 5 GRAND PRIZES



15' Lund Runabout, 70 hp Mercury, Spartan, Classic trailer



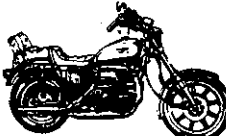
1981 Mazda GLC Hatchback



Walters Beach Hotel  
\$5,000 Hawaii Vacation: 10 day, two-island all-expense paid holiday



Panasonic Entertainment Center: VTR, Camera, 25" Color TV, Stereo Sound System



Harley-Davidson XLS 1000 Motorcycle

No purchase necessary—Sweepstakes ends July 31, 1981.

Reg. U.S. PAT. OFF. AM D.O. Corp.

**Enter today at the Glenmont  
"DAIRY QUEEN" Rt. 9W**

# CLASSIFIEDS

439-4949

Minimum \$3.00 for 10 words, 25 cents each additional word, payable in advance before 4 p.m. Friday for publication the following Thursday. Submit in person or by mail with check or money order to 414 Kenwood Ave., Delmar 12054

439-4949

## ANTIQUES



**ANTIQUES**  
For Over 35 Years

Bought & Sold

**APPRAISALS**  
Sterling & Plated  
To Update Your  
Fire & Theft Policy

**Jeanne Van Hoesen**

**439-1021**

67 Adams Place, Del., N.Y.

*The Bird Cage*

Victoria A. Seymour 439-5309  
Nancy T. Steele 439-5189

Wednesday thru Sunday  
12:00-5:00 p.m.  
or by appointment

1926 New Scotland Rd.  
Slingerlands, NY 12159

Period Furniture Country Pine  
Shaker Furniture Lighting

**ANTIQUES**  
at the  
**TOLLGATE**

1569 New Scotland Rd.  
Slingerlands  
439-6671

Hours:  
Mon.-Sat. 11:00-5:30 p.m.  
Sun. 1:00-5:00 p.m.

We Buy and Sell  
Quality Antiques

Cut & Pressed Glass Primitives  
Victoriana Quilts  
Sue Zick Interiors 439-3296

## WANTED

Old & New Tools

Call

**Pete Williams**  
(518)462-6882

**SINGER SEWING MACHINE.**  
Fine oak cabinet with detailed  
fretwork on sides and drawers.  
\$100. Call 439-6421 after 5 pm.

## ANTIQUES

**WE BUY WE SELL**

**ANTIQUES**

Good Used Furniture  
**FAIR PRICES PAID**

**BILL 'N' LOU'S**  
**ANTIQUES**

439-2507 • 439-1388

Closed Sunday

**ANTIQUE**  
**EXCHANGE**

Antiques & Collectibles

Bought & Sold

439-7715

154 Delaware Ave.

Behind Denby's



*The Unicorn*  
439-0002

2100 New Scotland Rd.  
Route 85, New Scotland

**ANTIQUES**

Buy • Sell

**FURNITURE**  
OF YESTERYEAR

Fri. & Sun. 12-5  
Sat. 10-5

**Delmar**  
**Antiques**

We buy and sell

Furniture, rugs, china,  
mahogany clocks, etc.

Buying: wicker in any condition.  
Buying: sterling, class rings,  
gold, jewelry, and coins.

**439-8586/482-3892**

Mon.-Fri. 12-5

Sat. 10-5 or by appt.

449 Delaware  
Ave.

## APPLIANCE SERVICE

**Appliances Serviced**

Reasonable Rates  
35 Years Experience

**Tri-Village**  
**Appliance Service**  
**439-9582**

## AUTO REPAIR

*tac's* **AUTO**  
**COLLISION**  
**SPECIALISTS**

Quality Work at Fair Prices

"Try us-You won't regret it!"

Rt. 9W 462-3977  
Glenmont or 439-9175  
Open 6 Days

## AUTOMOTIVE FOR SALE

1974 MATADOR, 4 Dr. Good Con-  
dition. Asking \$795. Eves. 765-2673.

**JEEPS, CARS, PICKUPS** from  
\$35. Available at local Gov't auc-  
tions. For Directory, call Surplus  
Data Center, (415) 864-0537 47716

78 HONDA HAWK 400; low mile-  
age; exc. cond.; \$1200; 439-2313.

## BATHROOMS

**BATHROOM NEED WORK?** Dirty  
joints? Loose tile? Leaks when  
showering? Call Fred, 462-1256.  
8T122

## BICYCLES

**BICYCLES**  
**LAWNMOWERS**  
**SALES & SERVICE**

**BENNETT'S**

561 Delaware Ave., Delmar

*In Slingerlands, The Spotlight*  
is sold at the New Scotland  
Pharmacy, Convenient Food  
Mart and The Toll Gate.

## BLACKTOP

**DRIVEWAYS SEALED** by experi-  
enced students. Call 439-7235,  
Phillip Giltner or Peter Propp.  
439-6379 for information. 2T625

## BLACKTOP

*Our Prices Are Reasonable*

**LIUZZI BROS.**

**Blacktop Specialists**

Residential. Commercial  
Industrial — Fully Insured

**482-8954**

Also Gilsonite or  
Jennite. J-16 Sealer

**SATISFIED CUSTOMERS**  
**ARE OUR BEST**  
**RECOMMENDATIONS**

## CONTRACTORS

**TOPSOIL &**  
**EXCAVATING**

Bulldozing & Backhoe  
*no job too small*

**A.P. Genovesi**  
**439-4654**

If there's *EARTH* to be moved—we'll do it

**WDZ BULLDOZING**  
**BACKHOEING**  
**LANDSCAPING**

- Site Cleaning
- Parking Areas
- Driveways
- Grading & Finishing

Fill • Topsoil • Gravel • Stone



**439-7595** evenings  
Commercial / Residential

## DANCE

**CLASSIQUE DANCE SCHOOL**  
154 A Delaware Avenue  
**CHILDREN AND ADULTS**  
**PRIVATE OR GROUPS**  
All types of Dance and Exercise  
**439-3331 Mrs. B. Follett**

## FIREWOOD

**FIREWOOD DELIVERED**

**Hardwood • \$90/full cord**

Cut and Split — 4x4x8

**Green Wood & Unsplit Wood.**

Also available

**Randy Bates • after 5, 797-3215**

## FIREWOOD

**WOOD SPLITTING.** We do it for you, by the job. Call Jim Haslam, 439-9702. 4T72

**GREENWOOD,** 3 full cord truck load, \$180 plus 2% tax. Ask about our cash discount. John B. Geurtze, Jr. 872-2078. TF

## FURN. REPAIR/REFIN.

**UPHOLSTERY REPAIRS** at home. Loose buttons, springs, cushions refilled, etc. Call 439-4130. TF

## ANTIQUIE OR MODERN FURNITURE REPAIR SERVICE

Repairing • Refinishing

**ROBERT ROTUNDO**

154-B Delaware Ave., Elsmere  
Phone 439-7700

## Heritage Woodwork

Specializing in Antiques and Fine Woodworking  
**FURNITURE**

Restored • Repaired • Refinished  
Custom Furniture • Designed/Built  
Bob Puller — 439-6165

## GARAGE SALE

**NEW APPLIANCES MOVED.** Old appliances removed. Garage Sale items. 439-7340. 4T79

**256 ELM AVE.,** Opposite Town Park, furniture, carpet, books, stamps, misc. 6/26 & 6/27, 10 - 2.  
**109 MOSHER ROAD,** June 27, 10 to 4. Many items.

**2220 NEW SCOTLAND RD.,** Voorheesville. Sat 6/27, Sun 6/28.

**98 FONT GROVE RD.** Toys, many other items. 6/27-28, 10-5.

**11 and 16 PHEASANT LANE,** Delmar, Sat. 9 - 5. Annual neighborhood sale.

## GLASS

## DAVES GLASS COMPANY

1548 Delaware Ave.  
(behind Denby's)  
mirrors • tabletops  
auto glass • stained  
glass & supplies  
— storms & screens

**Broken Window?  
Torn Screen?  
WE FIX 'EM!**

**Roger Smith's  
Decorative  
Products Co.**  
340 Delaware Ave.  
439-9385

## HELP WANTED

**INFORMATION** on Alaskan and overseas employment. Excellent income. Call: 312-741-9784 Ext. 1062. 4T716

## HOME IMPROVEMENT

### Exterior Remodeling

Roofing • Repair

Painting • Siding

**FREE ESTIMATES**

**434-8993**

Evenings and weekend calls welcome.  
**434-8993**

Call  
**STEVE HOTALING**

*The Handy Man*

Home Repairs  
Remodeling  
Interior-Exterior  
Painting  
Aluminum Doors  
and Windows

**439-9026**

## HOUSE WASHING

**EXTERIOR HOUSE WASHING.**  
Clapboard, alum. siding, painting prep. Reasonable. 439-1715. TF

## INTERIOR DECORATING

**DELMAR DECORATORS  
SAVE UP TO 20%**

Slipcovers, Draperies,  
Table Pads, Bedspreads,  
Wood & Cloth Shades  
Delmar • 439-4130



Beautiful  
**WINDOWS**  
by Barbara  
Draperies,  
Bedspreads  
your fabric or mine  
**Estimates  
872-0897**

## JEWELRY

**EXPERT WATCH AND JEWELRY REPAIRS.** Diamond settings, engraved wedding and engagement rings, reasonable. Your trusted jeweler, LeWanda. Delaware Plaza Shopping Center, 439-9665. TF

## LAMP REPAIR

### LAMP REPAIRS

New wire, plug and 3-way socket on any standard

Table Lamp \$5.75 Floor Lamp \$6.75

## LAMPHOUSE

Behind Delmar's P.O.  
439-7258 • M-S 10-5:30

## LAWN & GARDEN

**HOME GARDENS** roto-tilled. Reasonable. Call Dick Everleth, 439-1450. 3T625

**LAWNMOWERS REPAIRED.** Free pickup & delivery. Also broken lawnmowers wanted. 462-4835.

## TOPSOIL

**CEDAR HILL TRUCKING**

Cedar Hill, Selkirk

**767-9608 767-2862**

## Blacktopping

• with Coal Tar Sealer & Filler  
• with Latex  
★ **Lawn/Hedge Care** ★  
★ BCHS students need summer work ★  
★ 465-8137 For Estimates 439-1380 ★  
★ Neil Call Brian ★

## HORTICULTURE UNLIMITED

— Spring Cleanup  
— Natural Landscaping  
— Nursery Stock  
— Flowers  
— Lawn Mowing  
— Guaranteed Planting  
"It's Only Natural!"

**BRIAN HERRINGTON  
482-2678**

## VAN WORMER ENTERPRISES

Lawn Mowing Maintenance  
Spring Clean up  
Damaged Lawns Repaired  
Season Contracts Available  
Fertilizing—Seeding  
Emergency Tree Removal

**439-4683**

## LOST

**LOST: TENNIS RACKET** Chris Everet, between Middle School & 4 Corners area. Reward. 439-1989.

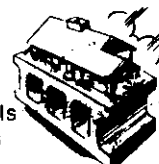
## MASONRY

### ALL TYPES MASONRY NEW — REPAIRS

26 Years Experience  
Chimneys, Fireplaces, Stoops, Walks,  
Foundation Repairs, Waterproofing  
**PROFESSIONAL WORK WITH INTEGRITY**  
Serving this community for years  
with Pride—Satisfaction Guaranteed  
**F. JOSEPH GUIDARA**  
439-1763, evenings

## MASONRY CARPENTRY NEW • REPAIR

Chimneys  
Sidewalks  
Patios  
Retaining Walls  
Foundations



**797-3436**

## SHAMROCK MASONRY

New Work/Old Work  
Fireplaces  
Chimneys, Foundations  
Waterproofing Patios  
Sidewalks Bathrooms

**Terrence Smith**

**434-3013 482-5940**

## MISC. FOR SALE

**PASSPORT AND ID PHOTOS.** Ready in minutes. Call L. Spelich, phone 439-5390. TF

**KEEP COOL**—Two window air conditioners: one big (\$100), one small (\$50) window fan, reversible (\$20) 439-1813.

**AM-FM STEREO CASSETTE RECORDER**—2 - 21" speakers. Excellent condition. \$185. 439-4471.

**TRAMPOLINE**, excellent condition. \$250. - 768-2988.

**RUGS**—2 bright grass green shags, 9' x 7 1/2'. \$35 ea. 439-6909.

**CHAIR**—modern, dark brown, upholstery/chrome rocker with ottoman. \$125. - 439-6906.

**AIR CONDITIONER**, Fedders, window, 6,000 BTU, 110V, limited use; excellent condition. Asking \$150. 439-7282.

**COLONIAL SOFA**—flowered beige background. Excellent condition. \$350 - 436-4868.



**MISC. FOR SALE****Bermuda Bags****BEST SELECTION**

No store has a greater selection of Bermuda Bags and Covers than

**CASUAL SET**

of *Stuyvesant Plaza*

**MUSIC**

**PIANO LESSONS.** All ages, levels, adult beginners. MA degree. Sandra Zarr, 767-9728 (Glenmont). 24T618

**GUITAR—FLUTE LESSONS**

All ages—All levels  
Your home or mine  
Alison Kurtessis 768-2170

**NURSES**

**TRI-VILLAGE PROFESSIONAL NURSES** available for home care. 439-7135, 767-9137. 3T618

**PAINTING & PAPERHANGING**

**CAPITALAND PAINTERS.** Free estimates. Interior/exterior. Reasonable prices. References. 449-3281 or 439-3996, 6-10 p.m.

**THE HAPPY PAINTERS.** Interior/exterior. Insured. Delmar references. Al Bradt, 439-9729; John Toohey, 765-2737. 6T79

**R.E.O. PAINTING**

Exterior/Interior

Free Estimates

Insured/Guaranteed  
RICHARD OLDREIK

439-2907

**"Have Brush, Will Travel..."**

Interior & Exterior Painting  
by someone who enjoys his work

Full Ins. • Free Estimates  
Using Benjamin Moore Paints

Norbert Monville (518) 482-5940  
Twenty-Four Fordham Court  
Albany, New York 12209

**S & M PAINTING**

Interior & Exterior

Wallpapering — Painting

FREE ESTIMATES

INSURED • WORK GUARANTEED

439-5592 after 5 p.m.

*In Voorheesville, The Spotlight* is sold at the Grand Union and Voorheesville Pharmacy.

**PAINTING & PAPERHANGING****L.M. CURTIN  
Painting Contractor**

Interior/Exterior  
Insured  
FREE Estimates  
Reasonable Rates

**YOUR SATISFACTION  
IS  
MY REPUTATION**

439-5897

**VOGEL  
Painting  
Contractor**

Free Estimates

- RESIDENTIAL SPECIALIST
- COMMERCIAL SPRAYING
- WALLPAPER APPLIED
- DRY WALL TAPING

Interior — Exterior  
INSURED

439-7922 439-5736

**D.L. CHASE**

Painting  
Contractor

Residential  
Specialists

Complete home repair  
and maintenance services

768-2069

*In Glenmont, The Spotlight* is sold at the 5-A Superette, Heath's Dairy and Van Allen Farms.

**PETS**

**FREE COLLIE.** Purebred spayed female, 6 yrs. Needs loving home, room to run. Owner moving. 439-6136 eves.



CAT HAVEN

FOR CATS ONLY Reservations Required — Individual Care in Private Home —  
ETHEL FAY 765-2715

**PETS****MARJEM  
KENNELS**

Give your best friend a treat from  
MARJEM KENNELS

**OBEDIENCE  
CLASSES**

Starting July 16  
Sign-up Now!

Reservations Necessary

767-9718

Boarding-Grooming-  
Pet Supplies

**PLUMBING & HEATING****Home Plumbing  
Repair Work**

*Bethlehem Area*  
Call JIM for all your  
plumbing problems

Free Estimates • Reasonable Rates

439-2108

**L.S. Ferguson  
Plumbing, Heating  
& Furnace Cleaning**

24 Years Experience

765-2990 days

or 1-868-2502

anytime

Get an Expert

This Time



LOOK



for the three R's  
in Plumbing & Heating  
Repairs & Installations

- Responsible
- Reliable
- Reasonable

*If that's what you want  
in a Plumber CALL*

**Bob McDonald**

756-2738

Days or Evenings

**ROOFING**

For a FREE Estimate on



**Cyrus Shelhamer Roofing**

- SNOW SLIDES
- GUTTERS
- TRAILER ROOFS

INSURED  
REFERENCES

756-9386

Can't decide  
who to call  
to do your  
ROOF?



Why not call the company  
where superior workmanship  
still means something?

**VANGUARD  
ROOFING CO.**

Free Estimates—Fully Insured

Call JAMES S. STAATS

767-2712

**ROOFING  
SIDING**

Residential — Commercial  
Ice Sealed Eaves

Gable - Built-up - Bonded  
Aluminum Siding - Remodeling  
Free Estimates - Fully Insured

**JAMES**

HOME IMPROVEMENT CO.

— Since 1943 —

439-3000

421 Wellington Rd., Delmar, NY

**COLLEGE ROOFER**, experienced insured - reliable - free estimates. 439-5630.

**ROOFING/SIDING**

**VANCANS ROOFING.** New roofs, repairs and slate work. Free estimates. 439-3541. TF

**ROTO-TILLING**

**HOME GARDENS** roto-tilled. Reasonable. Call Dick Everleth, 439-1450. 3T625

*In Slingerlands, The Spotlight* is sold at the New Scotland Pharmacy, Convenient Food Mart and The Toll Gate.

## SIDING

**Dick Dornermuth and Sons**  
**SIDING & TRIM**  
*Our Only Business*  
 — Free Estimates —  
**768-2429**



## SITUATION WANTED

**NEED YOUR CHIMNEY REPAIRED?**  
 Experienced, local references available. Call 439-1464.

**RESPONSIBLE, MATURE** Graduate Student couple available for house sitting. Many local references available. 439-1464.

**YOUNG MARRIED WOMAN** desires babysitting jobs. Anytime call 439-4310.

**HOUSECLEANING**, Houses and apartments. Mon. thru Fri., skills and references. 439-5322, 456-5831.

**PAINTING**, mowing, cleaning service, general handywork, reasonable rates, assured work. 439-4212. BT813

**CHILD CARE**, My home—near Elsmere. Reliable, mature. 439-4662. 4T72

**TUTOR**, Experienced Bethlehem teacher. Math. Reading. 1-3. 439-5297.

**HOUSE-CLEANING** experienced with reference. Delmar area. Call Maureen 872-0341.

**TUTORING** by qualified Remedial Reading and Math Teacher. Call 456-6475 after 6 pm. 2T625

**HOUSECLEANING**, Exp. available weekdays. Call after 4:00. 439-7273 2T625

## SOLAR ENERGY



- Solar energy evaluations
  - Solar domestic hot water
  - Solar space heat
  - Solar greenhouses
  - Attractive and custom designed applications
- "Solar turns sense into savings"  
**768-2169**

## SPECIAL SERVICES

**DELMAR SANITARY CLEANERS** serving the Tri-Village area more than 20 years. 768-2904. TF

## SPECIAL SERVICES

**THE MICHAEL STUDIO** 767-9110  
 Professional wedding albums custom priced for your budget. 4T72

**NORMANSKILL SEPTIC TANK**  
 Cleaners. Systems installed, electric sewer roofer service. 767-9287 TF

**John M. Vadney**  
**UNDERGROUND PLUMBING**  
 Septic Tanks Cleaned & Installed  
**SEWERS—WATER SERVICES**  
 Drain Fields Installed & Repaired  
 —SEWER ROOTER SERVICE—  
 All Types Backhoe Work  
**439-2645**

## COLD DRAFTS?

Wrap your windows in  
**Window Quilts.**

*Roger Smith's*  
**Decorative**  
**Products Co.**  
 340 Delaware Ave.  
**439-9385**

## TABLE PADS

**TABLE PADS**, blinds, window shades, made to order. Free estimates. Call **DELMAR DECORATORS**, 439-4130. TF

## TRAVEL

### MYERS TRAVEL

Delmar's only airline approved  
 travel agent  
**210 DELAWARE AVE.**  
**439-7671**  
**37 N. PEARL ST.**  
**434-4131**

## TREE SERVICE

**HERM'S TREE SERVICE**, Call IV2-5231 tf

**REAGAN'S TREE SERVICE**  
 removal, trimming, stump removal. Emergency service. Insured. 439-5052 tf



## CONCORD TREE SERVICE

*Spraying for insect & disease control*

- REMOVAL
- PRUNING
- CABLING

• 24 Hr. Emergency Service  
 Free Estimates - Fully Insured  
**439-7365**

(Residential • Commercial • Industrial)

## TRUCKING

### FRANK MARKUS TRUCKING

- Topsoil
  - Yellow Sand
  - Crushed Stone
- Orchard St.,  
 Delmar



**439-2059**

## WANTED

**COLLECTOR** seeking old Lionel, Am. Flyer, Ives, Maerklin trains. Call 463-4988. TF

**I BUY** old cameras, toys, radios, dolls, postcards, photos, trains, jugs, dishware, and most everything old. Eve. 439-5994. 4T79

## WANTED

We pay cash for  
**USED APPLIANCES**  
 Any condition • Free pick-ups  
**439-9582 / 355-1313**

**WANTED!!**  
**USED CARS**  
*any condition*  
 Cash on the spot

**CALL NOW**  
**463-5282**  
**439-0515**  
**785-6257**

## REAL ESTATE FOR RENT

**OFFICE/RETAIL SPACE** for rent, up to 1,000 sq. ft. Spotlight Building (formerly Town of Bethlehem Coffee House), Delmar. 439-4949.

**DELMAR AREA** Efficiency apt. \$175/Mo. All utilities. Bus line. Business person, non-smoker. Available Sept. 1st. Reply Dept. "F", c/o Spotlight, Box 152, Delmar, NY 12054.

**FEMALE** looking for 1 BR Apt. to rent, including all utilities. After 5 pm. 273-9088.

**OFFICE SPACE** available in heart of Delmar. Up to 4,000 Sq. Ft. Will subdivide and renovate to suit tenant. Call 439-4432 or 439-9631.

**OFFICE** for rent, 23x14, 257 Delaware Ave., Elsmere. 439-2613. TF

## REAL ESTATE FOR RENT

**FURNISHED EFFICIENCY APT.**  
 Garage, util. provided. \$195/Mo. 439-6880.

**\$350 DELMAR GARDEN APT.**  
 Luxurious 1-Br. Balcony - Sunporch, busstop, no pets, utilities extra. 439-6295.

## REAL ESTATE FOR SALE

**FLORIDA - LARGO**. Taxes under \$300. 2 BRs, 2 Baths, DR, LR, Kit., Florida Rm., Gar., Well, All Util. \$59,900. 439-3331. 4T79

**BARN FOR SALE**. Sawn Timbers. Slingerlands. \$500. 371-9285.

## RUSTPROOF YOUR CAR TODAY



*Rust Proofing* *New Used*  
**Joe Keller**  
**SERVICE STATION**  
**GLENMONT 463-7712**

## GAS SAVERS

(Walk to Bus, Etc.)

**#1—4 bedrooms** for the family. Relax on the screened porch. Have fun in the playground-like yard. Asking **\$59,900**

**#2—Cozy compact three bedroom home** on a lot with mature trees and plantings. Full basement and only **\$34,900**

(2 BR rental available).



**439-8237**

**231 Delaware Ave.**  
**Delmar**



# Vox Pop

*Vox Pop is open to all readers for letters in good taste on matters of public interest. Letters longer than 300 words are subject to abridgement, and all letters should be double-spaced and typed if possible. Letters must be signed; names will be withheld on request. Deadline is the Friday before publication.*

## That tank

Editor, The Spotlight:

Granted the presence of the tank at the High School was a sad, unexpected reminder of how our society continually glorifies certain aspects of our national defense, but what was even more saddening was Mr. Faulkner's response to Ray Parson's letter. Mr. Faulkner shallowly mindedly attacked Ray's ability to see beyond organized propaganda and his courage to ask why is mass destruction of people seen as the only alternative in solving international affairs.

We fail to see why Mr. Faulkner was so determined to twist Ray's innocent quest for logicity concerning the manifestation engulfing the country.

"Just be damned glad"... (to put it in your own simple words Mr. Faulkner) that we were able to easily refute your position. After all, we would not want you to be floating among the reactionists...now would we...?

Marella Castaldo  
Amy Weber

Delmar

## A pacifist view

Editor, The Spotlight:

I have been following the letters that originally stemmed from the placement of the National Guard tank in the High School parking lot this spring. While I have been

## REAL ESTATE



## DIRECTORY

Local

ERA

JOHN J. HEALY REALTORS

361 Delaware Ave.

439-7615

PICOTTE REALTY INC.

205 Delaware Ave.

439-4943

## 563 KENWOOD AVE.



- Gracious and spacious 1840's center-entrance Federal Colonial on 6 acres! Privacy and country living in-town!
- Eat-in country kitchen and dining area with sliders to rear deck.
- Living room with woodstove • Family room • Freshly painted
- Butler's pantry, laundry and 1/2 bath • 4 bedrooms and full bath up
- New gas heating and hot water system • Insulated throughout
- \$89,900. Principals only. 439-5061
- OPEN HOUSE: SUNDAY, JUNE 28, 1-5

# The Lobster Pound

246 Delaware Avenue, Delmar—next to the A&P  
Tues. - Sat. 9:30-6, Sun. 10-2

439-3151



Place your clam orders  
early  
for July 4th weekend

PRE-COOKED  
COCKTAIL SHRIMP  
CHOWDER  
NEW ENGLAND  
MANHATTAN

SHRIMP  
SCALLOPS  
LOBSTER TAILS  
CRAB MEAT  
SALMON

FLOUNDER  
HADDOCK  
SCROD  
SWORDFISH

COMPLETE SELECTION OF  
CANNED AND FROZEN SEAFOOD

For Your Dining Pleasure, Visit  
**The Lobster Pound Restaurant**  
Rt. 9, Latham

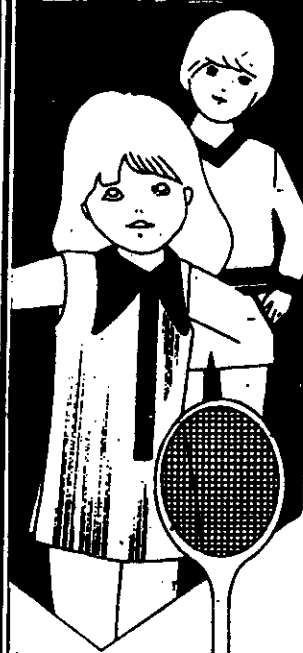
Visit our other Seafood Markets:

1806 Western Ave., Albany • Rt. 50, Burnt Hills  
Rt. 9, adjacent to the Lobster Pound Restaurant

SERVING THE CAPITAL DISTRICT FOR OVER 20 YEARS



## Summer Tennis Camp for the Junior Player

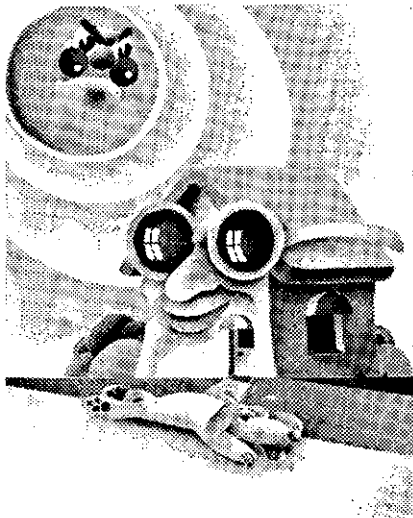


- 9 one-week sessions starting Mon., June 29. 9 a.m. - 1 p.m. Mon. - Fri.
- Instruction, supervised play and swimming for only \$40 per week.
- Grouped by ability from beginners to advanced.
- Directed by JOHN VADNEY, former All-New England college player, an experienced coach.
- Call for information and application.

southwood  
TOTAL TENNIS CLUB  
INDOOR COURTS • JUNIOR PROGRAMS

CALL 436-0838

Rt. 9W & Southern Blvd.  
(at Thruway Exit 23) Albany



## now...sunglasses for your windows.

**SCOTCHTINT®** Sun Control Film by **3M Company** works like sunglasses — only better, because it can:

- Reflect away the majority of the sun's heat. In fact, 100 Sq. Ft. of this amazing material applied to the inside of sun-facing windows can equal 1 ton of air conditioning. Your home stays cooler and your air conditioner doesn't have to work so hard. Product performance guaranteed by 3M Company.
- Repel most of the sun's fabric-fading ultra violet rays. Draperies last longer and furniture, carpeting and paneling are safeguarded.
- Cut down the sun's annoying glare. Lets you enjoy your view instead of looking it out with awnings or closed draperies.
- 3M trained professional installers.

For information or to take advantage of this month's special offer call:

# 436-8128

**Capital Energy Company**  
11 North Pearl Street  
Albany, New York 12207

## Special Offer

Sliding Glass Doors - (72" x 80")  
Covered with P-19 Window  
Insulation Film—\$99<sup>95</sup>

Free 17' roll of 3M brand adhesive  
weather stripping. Your choice of color  
(Brown or white) with every installation.



impressed with the conviction all writers have shown, I feel that Mr. Faulkner's name-calling and criticism of Mr. Schapiro's, and Mr. Parson's wording has reduced this potentially thought-provoking debate to a mindless argument.

It is clear to me that we are dealing with sets of conflicting ideals. Therefore, all inclusive statements on either side are worthless. Still, I see a major issue that has been overlooked by Mr. Faulkner in his letters. The idea that Mr. Schapiro proposed and that I would like to reiterate is that everyone should have the freedom to believe and argue personal points of view. The fact is that when the tank was placed behind our school, no such opportunity existed. Perhaps a draft counselor could have been invited to speak, thus making the day a truly educational experience on all sides.

I feel that Mr. Faulkner should not be so quick to criticize new ideas, either.

One should realize that prior to World War I, war was considered by many to be a positive aspect of history. We have come a long way from there, but I feel we have much farther to go. I am not saying I demand peace right now, because, given the present social climate which includes the attitudes of Mr. Faulkner and others, it is impractical. As a pacifist, I personally am saying that I am radically opposed to war for any reason.

I would like to make a plea for non-violence and the peaceful resistance of war. For people who believe strongly in the ideas I have expressed, there are alternatives such as conscientious objection, which must be continued to be offered to people who feel strongly for life at any cost. For those who do not feel strongly, for those people who advocate a strong national defense policy, for Mr. Faulkner and others, I would like to say that I will not kill other human beings because I



**DIXON ZTR mowers save  
your time at every turn.**

DIXON ZTR mowers save time every place ordinary mowers waste it: trimming corners, around trees, at every turn! That's Mowbility.

Owners tell us that Zero™ Turning Radius saves up to half their mowing time, and sometimes even more. They tell neighbors how easy the mower operates, how they enjoy using it, what a great job it does—and most of all, it leaves them mower time for fun.

But don't take our word for it; try it yourself. A few quick turns to get the feel of its simple hand levers, and before you know it you'll turn yourself into a DIXON owner! Come in this week for your free test drive.



**Abele Tractor and  
Equipment Co., Inc.**  
Sales • Service  
Rentals

72 Everett Rd.  
Albany, N.Y. 12205  
438-4444

feel it is the greatest wrong, an insane invitation for the end of human existence. I, for one, will spend my time searching to understand the causes of war and the alternatives to what I see as the senseless waste of our incredible resource.

*Jeff Goodman*

Delmar

### The last letter?

Editor, The Spotlight:

If I may, allow me to once and for all put an end to this over-extended, often nonsensical literary battle fueled primarily by the good Mr. Faulkner. Re several of Faulkner's points:

Unfortunately, there is no definite correlation between age and wisdom. I'll be the first to admit that there is no substitute for experience, however, to denigrate my work on the basis of my age simply sidesteps the issues.

Secondly, I take full responsibility for what I say, and what I say is what I do. Lord knows most of the "radi-

cals" of the Sixties were in fact lying to themselves. To conclude that all young people's ideas are without merit or substance as "evidenced" by longevity, similarly side-steps the issues.

Thirdly, I will take as much time as necessary to explain what I mean, what I say, but, I will never bastardize the concepts by phrasing them so that "an eighth grader could comprehend." I say this not out of pomposity or a fierce intellectualism, for that would obviously be counter-productive to my aims. Rather, the English language is great solely because of its perversity, because of its infinite malleability of tone and mood. More often than not, a three or five-syllable word says it better than eighth grade vocabulary, and says it more accurately.

Thank you again, Mr. Editor. Perhaps this will be the end of the discussion?

*Raymond Parsons*

Delmar



## Community Corner

### Protect Your Bicycle

The bicycle-theft season is in full swing, which means riders must be doubly vigilant. The Bethlehem Police Youth Bureau has three strong suggestions: register your bike at town hall, lock your bike when you park it, and use bike racks where available.

"Bikes that are registered are seldom stolen," says Detective Fred Holligan of the Youth Bureau.

Commissioner Ralph Tipple adds a safety tip: ride **with** the traffic, not against it.

## The Mails™



**You Work Hard . . .  
You Deserve Help  
489-8591**

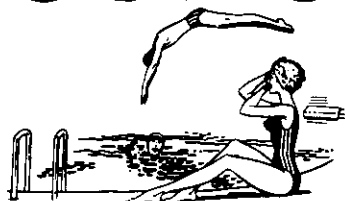
*Community Corner, a public service column of important community events, is sponsored by*

**City & County  
Savings Bank**  
Member FDIC

167 Delaware Avenue, Delmar  
(opposite Delaware Shopping Plaza)  
439-9941

# ROGERS

## BATHING SUITS



### BIGGEST SELECTION ANYWHERE

### SPORT & SKI SHOPS

DELAWARE PLAZA • 439-4545

F GREENBUSH PLAZA • 477-9104



### Announcing: Pinnacle Youth Camps

Resident Camps  
AGES 8-16

HORSEMANSHIP

MINIBIKES

CAMPOUTS

HAYRIDES

SWIMMING

HIKING

GO-CARTS

BIBLE STUDIES

...AND MUCH MORE



JULY 5 - AUGUST 22, 1981

### DAY CAMP AGES 5-8

HOURS: 8:30-3:30 Monday-Friday  
JULY 6 - AUGUST 31

- PONY RIDES • SWIMMING INSTRUCTION •
- HIKING • DAILY BIBLE LESSON • HAYRIDES

FOR FREE BROCHURE:

CALL (518) 872-1053 or WRITE: CAMP PINNACLE  
R.D. 1, PINNACLE ROAD  
VOORHEESVILLE, NY 12186

*Leonardo Hair Designers*

**BETHLEHEM PUBLIC LIBRARY**

412 KENWOOD AVE., DELMAR

439-6066

CREATIVE

PRECISION HAIRCUTTING

for Men, Women and Children

- Perms • Tinting • Frosting
- Bleaching and Corrective Work
- Welcomed

**NEXUS**

NATURE AND EARTH UNITED WITH SCIENCE

Open Tuesday thru Saturday, 9-5  
Evening appointments available

\$
CLIP & SAVE
\$

**DEL MAR WOVEN SHADES**

**ALL 40% OFF**

Order any style in any size. We also have super values on draperies, bedspreads, comforters, window quilt, window shades and vertical blinds.

**PHONE AND MAIL ORDERS UP TO 50% OFF**

Use Visa or Mastercard

**DEITCHER'S**

**WALLPAPER OUTLET**

188 REMSEN ST., COHOES

SAVE \$\$\$ 237-9260

**80,000 Rolls in stock**

**1st Quality**

**Save \$\$**

