

DO NOT CIRCULATE

# The Spotlight

July 9, 1981  
Vol. XXIX, No. 28

25¢

*Graphic newsweekly serving the towns of Bethlehem, New Scotland, and nearby communities*

BETHLEHEM

## Sewer project gets funds

Page 13

NEW SCOTLAND

## New try for Swift Rd. water

Page 14

## Family Day in Bethlehem

(Race results, Page 25)



## Video games take over

Page 7

**Hurry, Hurry, Hurry—Step right up!**  
It's the Onesquethaw Volunteer Fire Company's

# 15th Annual COUNTRY CARNIVAL

2 EXCITING WEEKENDS

Friday, July 10 and Saturday, July 11

- Raffle (1st prize: 100 gals. of fuel oil)  
(2nd prize: pocket calculator)

Friday, July 17 and Saturday, July 18

**SKIP PARSON'S RIVERBOAT JAZZ BAND**

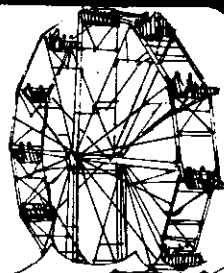
(Friday evening, July 17th ONLY)

- Raffle Tickets (1st prize: Side of Beef)  
(2nd prize: Instamatic Camera)

**Both Weekends**

- Chicken Bar-B-Q with salad, potato, corn on the cob, rolls and dessert (Sat. 4-8p.m.)
- Midway Games and Amusement Rides (Friday and Saturday 7-11p.m.)
- Bake Sale (Saturday only)

SEE YOU AT THE UNIONVILLE FIREHOUSE—ROUTE 443,  
DELAWARE AVENUE!!!



## Spotlight CALENDAR

**Tri-Village FISH**, 24-hour-a-day voluntary service year 'round, offered by residents of Delmar, Elsmere and Slingerlands to help their neighbors in any emergency. 439-3578.

**League of Women Voters** meets monthly at Bethlehem Library. 9:15 a.m. Babysitting available. Information, 439-5786.

**Assemblyman Larry Lane's** district office, 1 Becker Terr., Delmar, open Mondays 10-3.

## The Spotlight

(USPS 396 630)

**Publisher**

Richard A. Ahlstrom

**Editor**

Thomas S. McPheeters

**Senior Editor**

Nathaniel A. Boynton

**Office Manager**

Arline M. Holder

**Secretary**

Mary A. Ahlstrom

**Subscriptions**

Kara Gordon

**Contributing Photographers**

R.H. Davis, Tim Haverly

J.W. Campbell

**Sales Representatives**

Susan E. Moore,

Jerry Gordon, James Sullivan,

Mary Powers, Judy Arbour

**Production**

Brian Cahill, Manager

Ann Brink, Elaine Ellery

Caroline Terenzini

Vincent Potenza, Carla Reiner

**Newsgraphics Printing**

Gary Van Der Linden

The Spotlight is published each Thursday by Newsgraphics of Delmar, Inc. 125 Adams St., Delmar, NY, 12054. Second class postage paid at Delmar, NY. News and ad copy deadline: 4 p.m. Friday for following issue.

Subscription rates: Albany County one year \$7.50, two years \$13.50; elsewhere, one year \$9.00. Send address changes to The Spotlight, P.O. Box 152, Delmar, NY 12054.

MEMBER NEW YORK PRESS ASSN.

Phone 439-4949

NOW OPEN SUNDAYS

NOW OPEN SUNDAYS  
OPEN EVENINGS

# 3 FARMS DAIRY STORE

ROUTE 144

767-2252

Now Selling Fresh Cut Prime Meat, Full Line of Cold Cuts & Deli Items

### MEATS

#### PORK

OUR OWN ITALIAN SAUSAGE  
\$1.59 LB.  
No Preservatives Added

MIXED PORK CHOPS  
\$1.69 LB.

COUNTRY STYLE SLAB BACON  
\$1.44 LB.

ROLLED PORK ROAST  
\$1.69 LB.

### SPECIAL ITEMS DAIRY PRODUCTS

1 Lb. 3 Farms Cottage Cheese ..... 75¢  
1 Gallon Homogenized Milk ..... \$1.71  
½ Gallon 3 Farms Ice Cream ..... \$1.49  
1 Pound 3 Farms Tub Butter ..... \$1.55  
1 Qt. Farm Fresh Churned Buttermilk ..... 56¢  
½ Gal. Tropicana Pure Orange Juice ..... \$1.65

### BEEF

BULK COUNTRY SAUSAGE  
\$1.37 LB.  
No Preservatives Added

SPARE RIBS  
\$1.54 LB.

CUBE STEAKS  
\$1.89 LB.

LONDON BROIL  
\$2.29 LB.

SIRLOIN ROAST  
\$2.35 LB.

### FRESH BEEF BUYS

COOK OUT STEAKS  
\$1.65 LB.

BONELESS CHUCK ROAST  
\$2.29 LB.

SIRLOIN STEAK \$2.94 LB.  
BONELESS \$3.04 LB.

HAMBURGER PATTIES  
5 LB. BOX  
\$1.89 LB.

BULK HAMBURGER  
5 LBS. and OVER \$1.34 LB.

N.Y. STRIP STEAK  
\$3.60 LB.

EYE OF THE ROUND  
\$2.25 LB.

TOP ROUND ROAST  
\$2.53 LB.

### DELI ITEMS

LAND OF LAKES AMERICAN CHEESE  
\$1.89 LB.  
5 LB. Loaf \$1.79 LB.

POTATO & MACARONI SALADS  
74¢ LB.

N.Y.S. CHeddar CHEESE (SHARP)  
\$2.20 LB..  
(OUR PRICES SUBJECT TO CHANGE)

\*\*\*Special\*\*\*

COOKED HAM \$2.19 LB.

COOKED ROAST BEEF  
\$3.45 LB.

ALL WHITE TURKEY BREAST  
\$2.59 LB.

BOLOGNA \$1.67 LB.

COOKED SALAMI \$1.49 LB.

**Town of New Scotland** Town Board meets first Wednesday at 8 p.m., Planning Board second and fourth Tuesdays at 7 p.m., Recreation Commission third Tuesday at 7 p.m. Board of Appeals meets when necessary, usually Fridays at 7 p.m. Town Hall, Rt. 85.

**Five Rivers Environmental Education Center**, grounds open daylight hours seven days a week; interpretive building open Mon.-Sat. 9 a.m.-4:30 p.m. Information, 457-6092.

**Bethlehem Youth Employment Service**, Bethlehem Town Hall, summer hours Mon.-Fri. 8:30 a.m.-noon. 439-2238.

**Village of Voorheesville** Board of Trustees, fourth Tuesday at 8 p.m., Planning Commission third Tuesday at 7 p.m., Zoning Board second and fourth Tuesdays at 7 p.m., when agenda warrants. Village Hall, 29 Voorheesville Ave.

**Town of Bethlehem** Town Board, second and fourth Wednesdays at 7:30 p.m.; Board of Appeals first and third Wednesdays at 8 p.m. Town Hall, 445 Delaware Ave. Town offices are open 8:30 a.m. to 4:30 p.m. weekdays.

**Welcome Wagon**, newcomers or mothers of infants, call 785-9640 for a Welcome Wagon visit, Mon.-Sat. 8:30 a.m.-6 p.m.

**Bethlehem Recycling**, town garage, 114 Adams St. Papers should be tied; cans flattened; bottles cleaned, with metal and plastic foam removed. Mon.-Sat. 8 a.m.-4 p.m.

**Children's Story Hours** sponsored by Bethlehem Library July 6-August 14. Mondays, Clarksville playground, 11-11:30 a.m., Glenmont School playground 2-2:30 p.m.; Wednesdays, Hamagrael School, 10-10:30 a.m., Slingerlands School, 2-2:30 p.m.; Thursdays, Elm Ave. Park, 1:30-2 p.m., Elsmere School, 2:30-3 p.m., weather permitting. Free.

**Bethlehem Summer Band** for instrumental students grades 6-12 and alumni, rehearsals Bethlehem Middle School music room Tuesdays and Thursdays, 7-9 p.m. July 7-Aug. 11. Fee \$10. Concerts July 23 and Aug. 13.

**School Age Playgrounds** for grades 1-6, games, arts, crafts, special events, weekdays through Aug. 14. Clarksville, Delmar and Hamagrael, 9-11:45 a.m.; Elsmere, Glenmont, Slingerlands, 1-3:45 p.m.; Becker School 9-12, 1-3:45 p.m. See bus schedule for transportation. Free.

*In Glenmont, The Spotlight is sold at the 5-A Superette, Heath's Dairy and Van Allen Farms.*

**PLAYGROUND BUS SCHEDULE**

**Delmar-Hamagrael.** Children who participated in the Delmar Playground at the former Delmar School are invited to attend the Hamagrael School Playground. A bus will transport these children, making stops at locations indicated by italics:

Leave Bus Garage at 8:15 a.m., Bus Garage to *corner of Borthwick Ave. and Nathaniel Blvd.*; cover Borthwick Ave. to Kenwood Ave.; Kenwood Ave. to *corner of Gardiner Terrace*; Kenwood Ave. to *corner of Kilmer Ct.*; Kenwood Ave. to *corner of McKinley Dr.*; McKinley Dr. to *corner of Chestnut Dr.*; McKinley Dr. to *corner of Huron Rd.*; Huron Rd. to *corner of Lansing Dr.*; Lansing Dr. to *corner of Stratton Place*; Lansing Dr. to *corner of Dawson Rd.*; Dawson Rd. to *corner of St.*

*Clair Dr.*; St. Clair Dr. to *corner of Delaware Ave.*; Delaware Ave. to *corner of Village Dr.*; Village Dr. to *corner of Carriage Rd.*; Carriage Rd. to Hamagrael School by 8:45 a.m. Return via same route at noon.

**Tri-Village Bus Route.** Leave Bethlehem Central Bus Garage 11 a.m. to *Senior High School*; to Blessing Rd., Krumkill Rd. and Schoolhouse Rd. and stop at the *North Bethlehem Fire Department*; back via Schoolhouse Rd. to Krumkill Rd. to Rt. 85 (Slingerlands By-Pass), left on Kenwood to Union Ave. to *Slingerlands Elementary School*; Slingerlands Elementary School to former *Delmar Elementary School (new Town Hall)* via Cherry Ave. and Delaware Ave.

Town Hall to *Bethlehem Middle School* via Kenwood Ave. and

**It's not a Good Deal — If it's not a Good Car!**



**Rabbit Diesel— Fuel Economy Champ**  
4th Year in a Row!

**BMW**  
**The Ultimate Driving Machine!**

**Signature Edition Used Cars**

Feature a Full Year — 12,000 mile Warranty!

A Good Selection of used VW, BMW, and other makes — foreign and domestic.

*Capital Cities*  
*Imported Cars*

Home of the 3 year — 100,000 mile VW and BMW

Rt. 9W

**463-3141**

Glenmont

**DINAPOOLI**  
OPTICIANS | SINCE 1940

**WELCOME PHIL!**

Announcing the arrival of Phil Machlowski as the new manager of our Delmar office. Come in and meet Phil and let him help you with your eyeglass needs.

We're proud to have him with us!

**1 Delaware Plaza DELMAR**

Mon. - Fri. 9 a.m.-5:30 p.m.

Tues. evening 7-8:30 p.m.

**439-6309 / 439-9191**

**Stuyvesant Plaza ALBANY**

Mon.- Fri. 10 a.m.-9 p.m.

Open Saturdays 10 a.m.-6 p.m.

**489-8476**

**457 Madison Ave. ALBANY**

Mon. - Fri.

9 a.m. - 5:30 p.m.

**449-3200**

STORE WIDE  
CLEARANCE!

New Reductions  
from Stock!

All our Current Summer  
Fashions — Now At Dramatic,  
New, Low Prices

NOW

25% TO 50% OFF

DRESSES — SPORTSWEAR  
LINGERIE — ACCESSORIES

TOWN AND  
TWEED

DELAWARE PLAZA DELMAR

DAILY 10 to 9 SATS 10 to 5:30



Delaware Ave.; Bethlehem Middle School to *Elsmere Elementary School* via Kenwood Ave., Elsmere Ave. and Delaware Ave.; Elsmere Elementary School to *Hamagrael Elementary School* via Elsmere Ave., Fernbank Ave. and Wisconsin Ave. Hamagrael School to Elm Ave. Park.

*Pick-ups only at italicized sites.*

Bus will return to the above areas from Elm Ave. Park via same route leaving at approximately 3:45.

**Starting Times:**

Becker Playground Route. Pick-up 8:30, noon return only, 12, pick-up 12:30, return 4 p.m. Pick-up at Jericho School. Pick-up at the Jericho School on Jericho Rd. South on Jericho Rd. to South Albany Rd.; south on South Albany Rd. to South Bethlehem School, left on Bridge St. to Lasher Rd., left on Lasher Rd. to Rt. 9W, north on 9W to Elm Ave., left on Elm Ave. to Jericho Rd., right on Jericho Rd. to 9W, south on 9W to Beaver Dam Rd., left on Beaver Dam Rd. to Rt. 144, north on Rt. 144 to corner of Clapper Rd.—turn around. South on Rt. 144 to Rt. 396, Rt. 396 to Thatcher St., Thatcher St. to 9W, cross 9W to Cottage Lane, Cottage Lane to Beaver Dam Rd., left on Beaver Dam Rd. to 9W to Becker School.

**Selkirk-South Bethlehem Route.** Leave Bethlehem Central School Bus Garage 11 a.m.; south on Elm

Ave. to Houcks Corners; east on Feura Bush Rd. to 9W; 9W north (stop at Glenmont School); 9W south to Dowerskill Village; Dowerskill Village to Rt. 396 to Beaver Dam Rd.; cover Beaver Dam Rd. to Rt. 144; north on Rt. 144 to Clapper Rd.; Clapper Rd. to Halter Rd. via 144, and turn around.

South on Rt. 144 to Maple Ave., west on Thatcher St. to Cottage Lane; cover Cottage Lane to Maple Ave. to Beaver Dam Rd. to Rt. 396; west on Rt. 396 to South Albany Rd.; north on South Albany Rd. to Bell Crossing Rd. and Jericho Rd.; Jericho Rd. east to New Rd. (Long Lane); Long Lane east to Elm Ave.; Elm Ave. east to 9W and turn around.

Elm Ave. west to Fairlawn; Fairlawn to Elm Ave. Park. Bus will return to Selkirk and South Bethlehem areas from Elm Ave. via the same route at approximately 4 p.m.

**THURSDAY, JULY 9**

**Delmar Fire Dept. Ladies Auxiliary**, regular meeting second Thursday of every month except August, at the fire house, 8 p.m.

**New Scotland Kiwanis Club**, Thursdays, New Scotland Presbyterian Church, Rt. 85, 7 p.m.

**Bethlehem Senior Citizens** meet every Thursday at the Bethlehem Town Hall, 445 Delaware Ave., Delmar, 12:30 p.m.

In A Hurry?

Weight Conscious?

Hot and Hungry

**ANDRIANOS II**

155 Delaware Ave., Delmar

ALL YOU CAN EAT  
SUMMER SALAD BAR

ANTIPASTO SALAD    TOSSED SALAD  
POTATO SALAD        COLE SLAW  
JELLO FRUIT SALAD    BREAD N' BUTTER

HOT SOUP OF THE DAY

**\$2<sup>99</sup>**

Mon. - Fri. 11:30 A.M. - 2:30 P.M.

**Summer Preschool Story Hours,** Voorheesville Public Library, weekly at 10:30 a.m.

**Summer Reading Club,** children K-6th grade, Voorheesville Public Library, 3:30-5 p.m.

**Family Film:** "The Hobbit," Bethlehem Public Library, 7 p.m.

**Annual Auxiliary Picnic** of the Delmar Fire Dept. Ladies' Auxiliary, for all active-inactive members, at Carol Day's home, 6 p.m. For information, 439-3914.

#### FRIDAY, JULY 10

**Food Preservation and Canning,** free workshop presented by Joanne Gage of Albany County Cooperative Extension, Bethlehem Public Library, 10 a.m.-noon.

**Farmer's Market,** locally grown produce, baked goods and crafts, St. Thomas Church parking lot, Delmar, 9 a.m.-1 p.m.

**Recovery, Inc.,** self-help for former mental patients and those with chronic nervous symptoms. First United Methodist Church, 428 Kenwood Ave., Delmar, weekly at 12:30 p.m.

#### SATURDAY, JULY 11

**Grange Picnic,** for members, prospective members and their guests, at the Grange Hall, 7 p.m.

**In Delmar, The Spotlight** is sold at Handy Andy, Delmar Card Shop, Tri-Village Drug and Johnson's Stationary.

#### SUNDAY, JULY 12

**Victorian Period Exhibits,** Bethlehem Historical Assn., Schoolhouse Museum, Rt. 144 and Clapper Rd., Cedar Hill, 2-5 p.m. Open to public every Sunday through October.

#### TUESDAY, JULY 14

**Children's Movie:** "Case of the Bermuda Triangle," Bethlehem Public Library, 2 p.m.

**Summer Film Circuit:** "The Greatest Show on Earth," Academy Award winner with Betty Hutton, James Stewart, Bethlehem Public Library, 7:30 p.m.

**Public Hearing,** Bethlehem Planning Board, on application of Harry Gochee, 329 Delaware Ave., Delmar, for subdivision of lot at corner of Kenaware Ave. and Dawson Rd., Delmar. Bethlehem Town Hall, 7:30 p.m.

**Blood Pressure Screening,** sponsored by New Scotland Kiwanis, at the United Methodist Church, Maple Ave., Voorheesville, 9-11 a.m., 7-9 p.m.

**Free Movie:** "Proud Rebel," Voorheesville Public Library, S. Main St., 2 p.m.

#### WEDNESDAY, JULY 15

**Steak Roast and Clam Steam,** Bethlehem PBA, Mosall's Grove, North Bethlehem, 1 p.m. on. For tickets contact PBA President John Cox, Officer Paul Roberts or any Bethlehem police officer.

## area arts

*A capsule listing of cultural events easily accessible to Bethlehem-New Scotland residents, provided as a community service by the General Electric Co. plastics plant, Selkirk. Phone numbers are for information and tickets.*

#### THEATER

"A View From the Bridge" (Arthur Miller's drama), Berkshire Theatre Festival, Stockbridge, Mass., through July 19 nightly except Monday. Information and tickets at Community Box Office or (413) 298-5576.

"Moby Dick" (Berkshire Public Theater in association with Berkshire County Historical Society), Arrowhead, 780 Holmes Rd., Pittsfield, Mass., July 10-12, 17-19 and 24-26, 8 p.m. Reservations (413) 445-4631.

"Scapin" (Moliere comedy), State University at Albany Lab Theater, July 9, 8 p.m., and July 10 and 11, 7 and 10 p.m. Ticket information, 457-8608.

"Same Time Next Year" (comedy), Woodstock Playhouse through July 12, 8:30 p.m. (Sundays 2 and 7 p.m., Thursday matinee 2 p.m.) Box office (914) 679-2436.

"Jicaro Tree" (Mettawee River Theater presents mime, dance, puppetry adapted from ancient Mayan epic), Empire State Plaza, Albany, July 19, 8:30 p.m.

#### MUSIC

"Spiritual Sounds of Summer," area choirs perform in Wednesday Night at the Plaza series, Empire State Plaza, Albany, July 15, 7:30 p.m.

Country Dancing Under the Stars, with Michael McKernan, Tawasentha Park, Rt. 146, Guiderland, July 18, 8:30 p.m.

"Carmen," Lake George Opera Festival, Queensbury Auditorium, off Northway Exit 19, July 16, 18, 22 and 24 and Aug. 6 and 8 at 8:15 p.m.; July 20 and Aug. 1 at 2:15 p.m.

#### ART

Three Faculty Artists, Empire State College (photographs of Marilyn Anderson, paintings of George McClancy and Sharon Villines), Plaza Gallery, State University Plaza, Broadway, Albany, through Aug. 7, hours Mon.-Fri. 8 a.m.-6 p.m.

Mohawk-Hudson Regional Art Exhibit, juried show by Albany Institute of History and Art, 125 Washington Ave., Albany, through Aug. 30.

"A Touch of Iroquois," new permanent exhibit at New York State Museum, Empire State Plaza, Albany.

Helderberg Weavers, seventh annual show at Guggenheim Pavilion, Institute on Man and Science, Rensselaerville, through July 31.

"The Underground Museum" (new "hands-on" exhibit on archeology), New York State Museum, Empire State Plaza, Albany, Sundays, 12:30-4:30 p.m., through August.

"Cast With Style: 19th Century Cast-Iron Stoves from the Albany Area," Albany Institute of History and Art, 125 Washington Ave., popular exhibit extended to Oct. 4.

Print Club of Albany, annual summer exhibition including works by Aurora Capo DeHarvey and Dean Peterson of Delmar, Southern Vermont Art Center, Manchester, Vt., July 11-26, reception July 11, 3-5 p.m., open daily except Mondays.

**GENERAL ELECTRIC**

SELKIRK, NEW YORK 12158

An Equal Opportunity Employer

## Special On CHANNEL 17

- **U.S. Chronicle, season premier**  
Thursday, 8:30 p.m.
- **Training Dogs the Woodhouse Way, premier**  
Thursday, 9:30 p.m.
- **Ethnic Heritage, premier**  
Friday, 10 p.m.
- **Callas**  
Monday, 8 p.m.
- **Jane Goodall and Animal Behavior, premier**  
Wednesday, 8 p.m.
- **Best of Austin City Limits**  
Wednesday, 9 p.m.

Owens-Corning Fiberglas supports public television for a better community.

Owens-Corning is Fiberglas

OWENS CORNING  
**FIBERGLAS**

**Storyteller** Iris Dagostino, Bethlehem Public Library, 3 p.m.

**Glenmont Homemakers**, third Wednesday, Glenmont Community Church, 8 p.m.

**Evening on the Green**, the Village Volunteers, Bethlehem Public Library, 7:30 p.m.

**THURSDAY, JULY 16**

**Magic Show**, Clayton Albright, Elm Ave. Park, Delmar, amphitheater area, 6:30 p.m.

**Family Film:** "Incredible Rocky Mountain Road Race," Bethlehem Public Library, 7 p.m.

**American Legion Luncheons**, for members, guests and applicants for membership, Post Rooms, Poplar Dr., Elsmere, third Thursday, noon.

**SATURDAY, JULY 18**

**Quilter Charlotte Reinhardt** will demonstrate quilting that you may carry or wear on Perspectives, Channel 13, at noon.

**Outdoor Photography Workshop** for beginners with 35mm single-lens reflex camera and instruction book, at Five Rivers Environmental Education Center, Game Farm Rd., Delmar, 10 a.m.-noon. Advance registration required, 457-6092.

**Driver Improvement Course**, first of 2 sessions for drivers over 55, at the Bethlehem Public Library, from 10 a.m.-2 p.m. To register, call J.W. Campbell at 439-1381.

**SUNDAY, JULY 19**

**Kiwanis Pancake Breakfast**, at the Elm Ave. Park, from 8-11:30 a.m.

**MONDAY, JULY 20**

**Bethlehem Memorial Auxillary** Post 3185, VFW, third Monday, Post Rooms, 404 Delaware Ave., Delmar.

**Temple Chapter 5, RAM**, first and third Mondays, Delmar Masonic Temple.

**TUESDAY, JULY 21**

**Bethlehem Lodge 1096, F&AM**, first and third Tuesdays, Delmar Masonic Temple.

**AARP**, third Tuesday, First United Methodist Church, Kenwood Ave., Delmar, 12:30 p.m.

**Free Movie:** "Summer of My German Soldier," Voorheesville Public Library, 2 p.m.

**Summer Film Circuit:** "Breakfast at Tiffany's," romantic comedy starring Audrey Hepburn and George Peppard, Bethlehem Public Library, 7:30 p.m.

**Children's Movie:** "Charlie Chaplin's Circus," Bethlehem Public Library, 2 p.m.

**Guided Environmental Walk**, free, 1½-hour walk around the Five Rivers Environmental Education Center, 7 p.m.

**WEDNESDAY, JULY 22**

**Slingerlands Fire Co. Auxillary**, fourth Wednesday, Slingerlands Fire Hall, 8 p.m.

**Evening on the Green**, with juggler and magician Jim Snack, Bethlehem Public Library at 7:30 p.m.

**Public Hearing**, Bethlehem Town Board, to consider amending the traffic ordinance to include two stop signs on Fernbank Ave., Bethlehem Town Hall, 7:30 p.m.

**Children's Wildlife Program**, for children entering grades 1-4 in the fall, at the Five Rivers Environmental Education Center, 9:30-11:30 a.m. Pre-registration required, 457-6092.

**THURSDAY, JULY 23**

**Family Film:** "Jason and the Argonauts," Bethlehem Public Library at 7 p.m.



# ALICE A. BAKER, INC.

*'permanent hair removal center'*  
334 Central Ave., Albany 462-5678  
Mon.-Sat. 10 to 7 Free Parking

## FREE TREATMENT

EST. 1972 Buy One — Get 2nd Treatment FREE\*

**FREE CONSULTATION**

*Electrolysis — it doesn't hurt to look beautiful.*

**Instantron:** New feather touch control, for the finest electrolysis treatment available.

**Unwanted Hair Destroyed Forever**

• Face • Arms • Body • Legs • Eyebrows

\*NEW PATIENTS ONLY

### June Salesperson of the Month



Bob Edwards

Congratulations to Bob Edwards, the Delmar Salesperson of the Month. Bob's transactions for the first 6 months of this year have exceeded **\$1,000,000**. Bob continues to be leading salesperson in the Delmar area. He is well qualified to help you in any Real Estate matter.

### NEW LISTINGS

Delmar..... **\$95,900**  
Williams Bros. built, 5 bedrooms, 2½ bath Colonial in desirable location. Many extras. Call Bob Edwards at 439-9906.

Slingerlands..... **\$79,900**  
Quality built 3 bedroom, 1½ bath Colonial in prestigious location. Call Bob Edwards at 439-9906.

Glenmont..... **\$51,500**  
3 bedroom, 2 bath Ranch. Beautiful private lot. Call Anne McGoey at 439-9906.

*We Are Known By Our Good Listings*



# Roberts Real Estate

Call  
**439-9906**

190 Delaware Ave., Delmar

## Wedding Photographs by Campbell

PORTRAIT  
CANDID  
COMMERCIAL

439-1381

Delmar



# The Spotlight

Graphic newsweekly serving the towns of Bethlehem and New Scotland, Albany County, N.Y. • (518) 439-4949

## Video games: entertainment that grabs your mind

There are probably a lot of reasons why it was inevitable: A generation weaned on "Star Wars" needs games a little more sophisticated than Cops 'n' Robbers. Perhaps a marriage of our technology and competitive spirit has produced an appropriate offspring. Still other say that greed and opportunism are once again staining the fabric of our society.

Whatever the reason, the bald-headed-alien fact of the matter is that the Space Invaders have landed, and legions of young people are sliding astronomical amounts of quarters into the coin slots of electronic game machines.

For those who have never seen them before, the games are near marvels. Pinball machines now talk in metallic basso-profundo voices, saying things like, "hit the red," or, "I'm hurt." Video games have as many as five distinct player-controlled functions,

### Fourth brings one fireworks accident

A New Scotland man lost several fingers and suffered burns July 4 when a "blockbuster" firecracker exploded in his hand, Albany County sheriff's deputies reported.

David Tynchyn, 24, of 4743 New Scotland Rd., New Salem was listed in good condition Monday at Albany Medical Center following the incident on Old Stage Rd. in the Town of Knox.

The injury was the only serious local incident in an otherwise quiet—from a law enforcement point of view—Fourth.

Sheriff's deputies reported three arrests July 3 for unlaw-

ful dealing in fire works. Two Rensselaer men were arrested at Thompson's Lake campsites, and Richard Berger, 31, of Voorheesville, was arrested in Berne.

In Bethlehem, the only Fourth of July incident involved a midnight ramble over several lawns on Krumkill Rd. in North Bethlehem. A pickup truck tore up one lawn, then mowed down a mail box next door and damaged some more lawn. The truck was found empty by police about a mile down the road, and police reported that the driver called to identify himself. Charges are pending.

Is there really cause for alarm? How much do these

young people spend, and whose responsibility is it? And who's getting rich off these machines?

At last count there were 43 electronic video games and 32 pinball machines that kids under 18 have access to just in the Delmar-Elsmere area. There are several more of either variety if you include the number in bars, but the vast majority of all these is located in two arcades, McBoogles at the Delaware Plaza and Escape at 300 Delaware Ave.

Who plays the games? Everybody. During a three-hour stretch one afternoon at McBoogles 38 "players" answered questions—16 more responded to questionnaires handed out by attendant Kirsten Remo that same day from 6 to 11 p.m. at Escape. Their age ranged from 8 to 40, with average being a little over 17. Full-time attendant Dave Van Deusen of McBoogles said there is a 4 year old who comes in fairly regularly and plays the heck out of one of the machines.



break. You should have seen their reaction the first day school was out, trying to get past the kids to the machines."

How much money do they spend per week on the games? Players reported an average of slightly more than \$5. The high was \$25, spent by a 17 and a 20 year old. Seven players, aged 8 to 16, reported spending \$1 per week. One 13-year-old said he played only when he could get a free game.

Where does the money come from? Twelve of the 43 players who are 16 or younger weren't spending money they didn't earn themselves. The rest have paper routes, mow lawns, or otherwise pay their own way.

Sixteen of the players said their parents expressed concern over the games; one was a 20 year old. Only four of the 16 were spending their parents' money.

Dick Materese, who with Jezz Austin is co-owner of McBoogles, had this to say: "People complain because kids come in here and spend money they shouldn't be spending, and these people blame that on the games. I'm no psychologist, but it seems to me that if my kid is wasting money then I can't just blame it on what he's wasting it on. It's like drugs. The problem is with the parent-child relation-

"We've even had a couple of senior citizens in here one day," Van Deusen said, "and it's too bad you missed the lunch crowd. All these business in three-piece suits come in and get a couple of hot dogs and play during their lunch

ship, something has gone seriously wrong there.

"Personally, I'd rather have my kids come in and blow their money and then tell them, 'Sorry, that's it,' and have them develop some sense of what that means.

Nevertheless, there is a tendency to think of the arcades as this generation's pool halls. One 11-year-old

said his parents are convinced the arcades are "run by organized crime." At best, they're tolerated as "hang-outs."

"Not true," says Austin. "Since we've been open I've yet to throw anybody out. There's never been a fight. If anything, it's a place for kids to make new friends and develop a sense of comradeship. You can see it happen-

ing, it's terrific.

Minors are not permitted to smoke at McBoogles. Nobody is permitted to smoke at Escape, and they have signs everywhere: "No Abusive Language" and "If You Don't Play, Don't Stay."

The players themselves are, not surprisingly, enthusiastic. "I think this is the best thing that ever happened to this town," one 18-year-old said. "When I was younger there was nothing to do but go in the woods somewhere and drink."

"Hey," a 25-year-old said, "so they spend five bucks a week here, maybe ten. It's cheaper than bail money.

Just how big a business are these games?

Distributors estimate that the gross for the tri-county area is in the millions, though there are more than thirty companies competing for the profits. Dean Moore, Jr. of Video Environment owns the machines at McBoogles, reports that the average elec-

tronic game costs \$3,000 and takes about two years to pay for itself. Jack Zuckerman of Games People Play in Saratoga, says the actual cost of the machine can be recouped in 12 to 18 months, with the cost of overhead making up the difference.

"There are no averages," Zuckerman explains. "You take the same machine at location A and another at location B and one does very well while the other one bombs."

According to Moore, a machine can make anywhere from \$2,000 to \$10,000 per year, again depending upon location. But the electronic games business is a business like any other business, and there are risks involved.

Zuckerman: "I had this machine, 'Gorf', which I invested \$3,200 in. It did really well for two weeks and then it just broke. It took me six weeks to get the parts to fix it."

The actual distribution of

# changes a SINGLE

## OVER 1,100 AREA MEMBERSHIPS

*This unique, private, communication system lets members select from a huge group. Fee \$55 for 8 months. Since 1977 by a Delmar teacher, as reported in: TIMES UNION, HELDERBERG SUN, TIMES RECORD, LEISURE MAGAZINE. Please ask for information and our references.*

**COMMON INTEREST GROUP 439-0858**  
**154 KENWOOD AVE. DELMAR, N.Y. 12054**

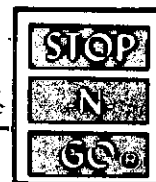
HOMOGENIZED  
**MILK**  
**\$1.79 gallon**



**STOP-N-GO FOODS**



**309 Delaware Ave.**  
**Delmar, N.Y.**



**2% MILK**  
**\$1.79 gallon**

**GOLD COAST**  
**ORANGE JUICE**  
**\$1<sup>19</sup> 1/2 gallon**

**GENESEE**

*Beer*

**\$1<sup>79</sup>**

**6 pk. 12 OZ. NR**

**WISE**

**potato chips**

**99¢**

**7 OZ. BAG**



**with coupon**

**12 OZ. CANS**  
**\$1<sup>59</sup>**

**50¢ OFF**  
**any Deli purchase**  
**of 1 lb. or more**  
**with coupon**

**\*GAS PUMPS AND STORE OPEN 24 HOURS 7 DAYS A WEEK**

the profits can vary greatly. It used to be that there was a 50-50 split with the merchant on whose premises the machine is located. No longer. Moore reports that a 50-50 deal is made only for exceptional locations these days, the norm being closer to 30-70, with the lion's share going to the distributor.

"One thing's for sure," Zuckerman says, "the manufacturers are making a lot of money." Advances in technology make the obsolescence rate for electronic games phenomenal. Improvements in sophistication, size, and complexity all make a difference. "Have you seen any of the Mini-Games?" Zuckerman asks "I have an 'Asteroids' game that is 20 inches wide by 24 deep and 55 inches tall. You can put the game anywhere, and it has the same earning capacity as the regular six foot model. The technology of the industry is creating new markets all the time."

"I'll tell you what's made them so popular," Zuckerman continues. "It's the introduction of what we call skill level. Used to be with these video games you put in your quarter and you got two or three minutes, no matter what. Now, the better you are, the longer you play. That's what made pinball machines so popular for so long. The element of challenge."

But what of the social costs?

Much has been made of the fact that McBoogles is right next door to Off Track Betting. Yet only one of the 54 players who answered ques-

tions said he played the games out of habit. Several said they didn't spend more because it got to be a waste of money.

And the players don't buy those esoteric justifications about improving hand-eye coordination put out by the owners. Asked why they play, they had virtually one answer: "fun."

"Admittedly an unscientific sampling, but that hardly sounds like addiction. When you think about it, it's the technology which is making the changes. Star Wars is Cops 'n Robbers, on a Galactic level, and it may be that perpetual fascination with newness and gadgetry that makes the games so appealing.

When asked what his biggest money maker was, Moore replied, "Pac-man. It's new. New games always do well." The players confirm this.

"We're at a peak right now," says Moore. "The games run in two or three-year cycles. Soon you'll see a downswing, and then in a couple of years their popularity will rise again."

Manufacturers are not so pessimistic. Even now they're developing games that will employ laser technology. For better or worse, it seems electronic games will be part of culture for some time to come.

*Vincent Potenza*

#### Magic at Elm Ave. Park

Bethlehem's Elm Avenue Park will be the scene of a magic show at 6:30 p.m. Thursday, July 16. Clayton Albright will be the featured performer.

# SEMI-ANNUAL SALE

## 20-50% OFF

**WOMEN'S**  
Spring & Summer  
Dress & Casual Shoes

**Buster Brown**  
Children's Sandals

*Donnelly* SHOES

Delaware Plaza • 439-6106

Mon.-Fri. 10 to 9, Sat. 10 to 6



# Landscape Plans

Our PERSONALIZED LANDSCAPE PLANS will reflect your own personal lifestyle, add equity to your home, and save you time and money over and over again. A



beautiful landscape can be designed for low maintenance, too!



Come in today or call and let one of our designers start a plan of landscape development for your home. Through professional landscaping you will enhance your surroundings and invest in your future.

**J. P. JONAS, INC.**

Landscape Designers & Contractors

Feura Bush Road, Glenmont  
(a Garden Shoppe affiliate)

439-4632 • 439-4820



## WE ARE CONTINUING OUR SUMMER DRAPERY SALE

You can order something light and airy, or a lined or foam-backed drapery to keep out the heat. Call us NOW for FREE SHOP-AT-HOME SERVICE and SAVE 20%.

**DELMAR DECORATORS**

DELMAR, NY

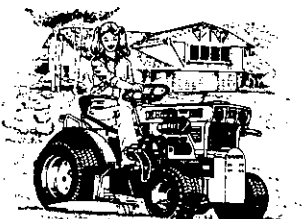
439-4130

# KUBOTA

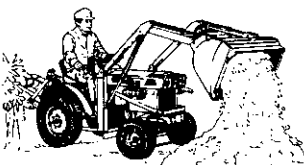
## Diesel - Compact Tractors

from 12 - 55 HP

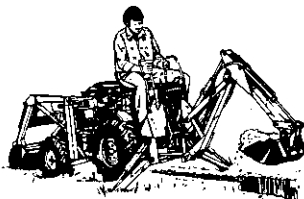
- 4 wheel drive
- Diesel engine for low maintenance and fuel economy
- Standard rear PTO
- Front PTO shaft
- Differential lock
- Independent rear brakes
- Hydraulic 3 pt. hitch, Category 1
- 6 forward, 2 reverse speeds
- Full range of matching implements including mowers, tillers, snowblowers, loaders, and backhoes



Mower



Loader



Backhoe



**Abele Tractor and Equipment Co., Inc.**

Sales • Service • Rentals

72 Everett Rd.  
Albany, New York 12205  
**438-4444**

## BETHLEHEM

### New board member shares limelight

School board meetings don't usually attract the younger set, so Jeremy Wolkenbreit, 5½, and Randi, 9, drew some attention at the Bethlehem school board's annual organizational meeting last Wednesday.

They had a good reason for being there, though. They had come to watch their father, Jed Wolkenbreit, take the oath of office as a new board member. Wolkenbreit came out on top in a four-way race for the seat in May.

Linda Wolkenbreit explained: "They campaigned, they should be here."

Board president Bernard Harvith welcomed the children and said, "Come again, okay?"

The board zipped through its lengthy, but mostly routine agenda, so the children heard little of the debate that often precedes decision-making.

After Wolkenbreit's swear-

ing-in, the board unanimously re-elected Harvith as president.

Sheila Fuller, who was nominated by John Clyne, was unanimously named vice-president. Mrs. Fuller handily turned back a challenge and won a second three-year term in May.

Among other business, district Superintendent Lawrence Zinn reported that the district's elementary level summer school offerings have so far drawn "little response," but that the upper level courses were "flying," with at least 12 filled.

### Three grants for B.C.

Three grants received Bethlehem Central school board approval at its meeting last week.

The board approved receipt of \$2,000 from the New York Foundation for the Arts to fund an artist-in-residence at the middle school and high school for part of the 1981-82 year.

A \$7,900 federal grant is to provide in-service training for supervisors and about 60 teachers "in the use of thinking skills in the regular classroom." The program is called GEMS.

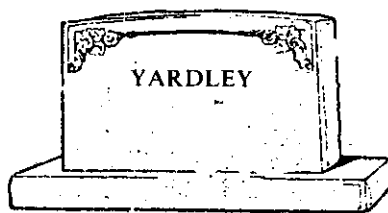
Another federal grant, \$10,000, is to train high school teachers to teach a course entitled "Religion in Human Cultures." Bethlehem, Glens Falls and East Greenbush school districts will participate in this project.

### Too many suspects

Most jewel thefts take place in the dead of night, or at least in relatively secluded circumstances. But Bethlehem police have at least 150 suspects for a theft which cost a Delmar homeowner more than \$2,000 in jewelry.

The theft apparently took place last February during an open house held by a real estate firm while the homeowner was vacationing in Florida. According to police reports, the owner forgot to take her traveling jewelry case with her, and discovered it missing when she returned. Lost were a gold stick pin with onyx and diamonds set in it, some earrings and a pearl choker.

## YOUR FAMILY MEMORIAL



Are you leaving the choice of a Family Memorial for someone else, to make later . . . hastily perhaps?

Your own personal history, etched in granite that will endure throughout the years to come, is too important a decision to leave to others. This is the best time of year to make a selection and erect the Memorial of your choice. Visit our large display of finished Monuments and Headstones.

## The Old Reliable EMPIRE MONUMENT CO.

Cemetery Avenue (off Broadway) Menands  
Entrance to St. Agnes & Albany Rural Cemeteries  
For your convenience open 7 days a week  
Phone 463-3323 or 463-3077

## HIGH SCHOOL SENIORS

Prepare For:  
OCT. '81

COLLEGE BOARDS

# SAT



TEST PREPARATION  
SPECIALISTS SINCE 1938

ALBANY CENTER  
163 DELAWARE AVE.  
DELMAR  
439-8146

## BETHLEHEM

### Project Equinox opens local office

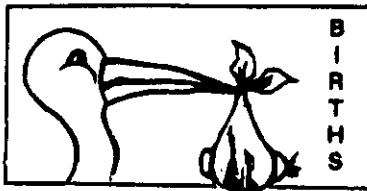
Project Equinox starts this week to offer counseling services in Bethlehem to persons of any age with problems related to drug use. Counselors will be available on Tuesday and Thursday afternoons by appointment. The Project Equinox number is 434-6135.

"We intend to establish our credibility for professional and confidential counseling with a low-key approach," said Mark P. Yolles, executive director of Project Equinox. He indicated that there was a moderate sliding fee scale, but that no one would be turned away because of financial circumstances.

Anyone interested in talking about a problem relating to drug use will have quick access to a counselor for a intake interview. If Project Equinox is not in a position to offer the services needed, a referral would be made to an appropriate agency. Anyone accepted for counseling at Project Equinox will be scheduled immediately.

Yolles stressed the fact that the service is completely confidential. Project Equinox is partially funded by federal funds and is stringently bound by rules on confidentiality. "We would be happy to have friends, business associates, family members, whatever, make a recommendation to someone that they get counseling assistance. But in the final analysis it is necessary for the person involved to recognize there is a problem."

Project Equinox will be using office space donated by the Town of Bethlehem. "We have no budget to furnish the office," Yolles said, "so donations of pictures, rugs, chairs, etc., would be appreciated." He emphasized the fact that Project Equinox is an independent non-profit agency, completely separate from the school, town government or police.



#### St. Peter's Hospital

Girl, Lauren, to Mr. and Mrs. Wynn B. Englisbe, Slingerlands, June 15.

Boy, Bryan, to Mr. and Mrs. Peter J. Williams Jr., Delmar, June 17.

Girl, Marie-Louise, to Mr. and Mrs. Michael J. Lathey, Delmar, June 21.

Boy, Seth, to Mr. and Mrs. Ronald P. Kershner, Glenmont, June 22.

#### Hershey Medical Center

Boy, Michael Edward Jr., to Mr. and Mrs. Michael Sullivan, Harrisburg, Pa., formerly of Delmar, June 3.

#### Where to look first

Bethlehem dog owners whose pets have strayed should check first with the town police and the dog warden, according to Police Sgt. Richard Vanderbilt. Strays picked up by the town are turned over to the Mohawk Hudson Animal Shelter, but may be kept by the town several days before going to the shelter. "Nobody ever thinks to call the police when their dog is missing," Vanderbilt said.

#### To sing in Saratoga

Mrs. Elizabeth Bergan of Delmar has been accepted as a member of the renowned Saratoga-Potsdam Chorus. She will sing in three concerts with the Philadelphia Orchestra this August in Saratoga Springs.

### DAYLILIES

All colors dug while you wait

Cedar Hill Iris Garden

767-9608

ROUTE 144 SELKIRK NY

#### Reservoir holds its own

The water level at Bethlehem's Vly Reservoir, which has caused town officials concern since last winter, is back up to 70 percent due to the recent rains.

Town Supervisor Tom Corrigan said Monday the reservoir had dipped to as low as 63 percent recently. The reservoir usually fills to capacity with the spring rains — that plus projections of drought in the next several years have caused the town board to consider more stringent restrictions on water use.

#### Auxiliary picnic

The Delmar Fire Department Ladies Auxiliary will hold its annual picnic Thursday, July 9, at 6 p.m. at Carolyn Day's home. The 200 Club drawing will be held at the picnic with Mrs. Kathleen Corrigan doing the honors.

Karen VanWormer, Kathy Cooke and Kim Cooke have been chairing the committee and organizing the picnic. They are inviting all active and inactive members of the auxiliary.

For more information, phone Mrs. Day at 439-3914.

#### WESTCHESTER WOODS

In Delmar's finest neighborhood, a beautiful Klersy-Built two story with a contemporary flair. Professionally decorated, large rooms, excellent traffic pattern, lovely cul-de-sac setting. This 2700+ square foot home has 4 bedrooms, 2.5 baths featuring large master suite with full bath. Bright breakfast area with sliding doors to backyard patio. Lots of closets, lots of storage. First floor laundry. Tops in energy efficiency. Proudly offered at **\$158,000.**

#### ALBANY

Convenient location, quiet street, extra large lot, 4 bedrooms, one + bath, well maintained, aluminum siding, income garages. **\$32,900.**

#### KENAWARE

Immaculate raised ranch in one of Delmar's most desirable neighborhoods. 4 bedrooms, 1.5 baths, Slingerland School, close to library, busline. Move in condition. **\$64,500.**

#### ESTATE SALE

Three bedroom ranch on established Delmar street. Well constructed, excellent condition, mature lot. Spacious rooms, 1.5 baths. Call for appointment. **\$59,800.**



## K KLERSY REALTY

### 439-7601

282 DELAWARE AVE., DELMAR 12054

HENRY J. KLERSY JR. BROKER

## BETHLEHEM

### Board won't appeal Northshore plan

The Bethlehem Board of Appeals has decided not to appeal a decision by the Appellate Division of State Supreme Court ordering the board to grant a special exception to Northshore Equities, Inc., for 15 four-unit apartment buildings on Feura Bush Rd. near Rt. 9W in Glenmont.

The case, originally heard by the board early last year, was one of those which prompted the town to make zoning code changes, a proc-

ess which will probably continue for some time. To residents who live near the proposed site, however, the changes came too late.

"It's out of our hands," Chairman Charles Fritts explained at last Wednesday's board meeting. "The court has ordered we grant the special exception."

Board attorney Donald DeAngelis then read the court decision to those area residents present at the meeting. "If you have questions regarding the specifics of how the site is to be developed," Fritts continued, "I strongly advise

you to attend the hearing the planning board will have on the matter and make yourselves heard." Under the revised code, the planning board has the responsibility to review the site plan for the development.

In other business, the board granted a variance to Norman B. Andrews, of 58 Greenock Rd., Elsmere, so that he can construct a summer porch.

A similar variance was granted to David A. Kadish, of 97 Delmar Pl., Delmar, so that he can complete remodeling his home.

Another variance was granted to Conrad Decker, representing the Gasland service station at 1358 New Scotland Rd., Slingerlands. Decker said Gasland plans extensive remodeling of the station, including the addition of another service island and several more pumps.

*Vincent Potenza*

allows only single-family houses to B-Residential, the only zone which now allows apartment construction. In a letter to the town board, Siegal said the land, which extends north to Bethlehem Central High School, is "ideal for apartments" since it is "isolated, flat, self-contained and has access to a major road without going through a developed neighborhood."

Siegal said Monday he has no definite plans for the land "I have some ideas, but I wouldn't say I'm ready to break ground," he said.

The request was referred to the Bethlehem Planning Board which has been reviewing a number of areas in light of recent changes in the town's zoning code.

### Pancake breakfast

The Kiwanis Club of Delmar is sponsoring a fund-raising pancake breakfast Sunday, July 19, from 8 to 11:30 a.m. at the Elm Avenue Town Park in the enclosed area near the concession stand.

Tickets for adults cost \$2.75, while those for children under 12 are \$1.50. These tickets are available from any member of the Delmar Kiwanis Club or can be bought at the door on Sunday.

All money collected will be used to support the club's youth and community services projects.

### Apartment zone asked

A Delmar attorney who recently purchased a 60-acre tract of vacant land at Elm Ave. opposite the Delmar Bypass has asked Bethlehem to rezone the land to allow apartments.

David Siegal, who with his wife Robin purchased the property from the Albany Roman Catholic Diocese last year, has asked the town to rezone the land from its current AA status, which

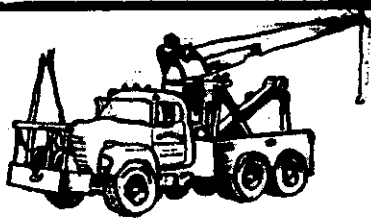
## KEEP COOL WITH AN AN OLD-FASHIONED

(Porch shade, that is.) We have green Basswood Shades for porch, patio or what have you, in stock, in sizes from 4 ft. to 12 ft. wide, ready to hang. They'll keep you cool for a lifetime with minimum care. AND NOW YOU CAN SAVE 20%. Installation available.

**DELMAR DECORATORS**  
Delmar 439-4130

## BLEAU'S

Towing & Service  
Elm Avenue, Selkirk



NO JOB TOO BIG OR TOO SMALL

Complete Auto & Truck Repairs • Crane Service

24 Hour Emergency Towing Service  
4 Radio-Dispatched Trucks

CALL US 439-8108

# SUMMER CLEARANCE

## Save 20% on all

### Summer Merchandise

Suits Knit Shirts  
Sportcoats Bathing Suits  
Slacks Bermuda Shorts

**PAUL MITCHELL'S**  
MEN'S WEAR

DELAWARE PLAZA  
439-3218



## BETHLEHEM

### Sewer project gets first grant money

The first set of plans for Bethlehem's town-wide sewer extension project have been approved by the federal Environmental Protection Agency, releasing \$2,217,300 in federal grant money for the project, Town Supervisor Tom Corrigan said Monday.

The town's consulting engineers, J. Kenneth Fraser Associates, are working to beat an Aug. 10 deadline for the completed plans; Corrigan said it "looks good" for making that deadline. The project timetable was advanced a year to avoid possible loss of federal grant funds in the Reagan Administration's budget cuts.

In a separate development, town officials met last week with residents of Halter Rd. in Glenmont, where septic tank overflow has caused concern.

Corrigan said the difficult terrain makes connection with existing sewers via a pumping station "prohibitive", so Public Service Director Bruce Secor will prepare an estimate on the cost of a small treatment plant for the area. Corrigan said he plans to make inquiries about the availability of federal aid.

### Outdoor photo workshop

A workshop on outdoor photography for the beginner will be held at Five Rivers Environmental Education Center, Game Farm Road, Delmar, on Saturday, July 18, from 10 a.m. to noon. Included in the session will be basic camera operation, equipment and care, types of film, composition, lighting, and the use of manual controls on the camera.

Participants should bring a 35mm single-lens reflex camera, and the manufacturer's instruction book for the camera. Registration fee is \$2, or \$1 for members of Five Rivers Limited. Registration must be made in advance by calling the Center at 457-6092.



Lee Ann Stembel

### Exchange student leaving

Lee Ann Stembel, daughter of Bethlehem Lions Club member Russ Stembel, will be leaving July 9 for Lyon, France, where she will be living with her host family for six weeks on the Lions International exchange program. A June graduate of Bethle-

hem Central High School, she will be attending the State University at Plattsburgh, where she will be majoring in French. Her host family has indicated they will travel to the mountains of France and also visit Denmark, the Netherlands, Belgium and West Germany.

Before her return in August from Amsterdam, Lee Ann will spend some time in the Netherlands with Petra Visch, who was an exchange student with the Stembels and gradu-

ated with the Bethlehem Central class of 1979. While their daughter is away, the Stembels expect an exchange student from the French Lions Club.

*In Voorheesville, The Spotlight is sold at the Grand Union and Voorheesville Pharmacy.*

### PAYING CASH

Collector Seeks Rifles and Shotguns

Both recent and older models

489-7254



### DELMAR REFORMED CHURCH

(at Four Corners)  
386 Delaware Ave.

10:00 a.m. Sunday Worship and Church School  
Nursery and Crib Care

Robert A. Hess      Joyce B. deVelder  
Ministers

Ample Parking      Worship with us!      439-9929

## STOP SUFFERING!!!

with

## HEADACHES

Chiropractic has shown that many of today's ailments are caused by "NERVE PRESSURE"

- FULL SPINAL EXAMINATION
- SPINAL BALANCE TESTS
- SPINE GRAPHS
- CHIROPRACTIC SPINAL ADJ.

**\$39**

WE WANT TO BE YOUR CHIROPRACTOR



Spinal Misalignments that CAUSE Nerve Pressure are determined by X Raying the Spine.

ALL NECESSARY X-RAYS WILL BE TAKEN ON THE INITIAL VISIT FREE OF CHARGE

MAJOR MEDICAL AND AUTO LIABILITY INSURANCE ACCEPTED

WE CARE

### CHIROPRACTIC CENTER

163 Delaware Avenue (Opposite Delaware Plaza)  
Delmar, New York 12054

Call 439-5077

## Duane's Carpetcare

Wall to Wall Cleaning Specialists

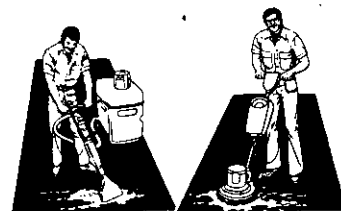
370-3293

Recommended by



&

Delmar Decorators



Steam cleaning is not enough to thoroughly clean your carpet. For the optimum results, carpet should be shampooed to loosen locked-in soil, and then "steam-cleaned" to completely rinse out soil and shampoo residue. This process is the closest thing to your washing machine...consisting of a wash cycle and a rinse cycle. There is no finer way to clean your carpet.

\* 3M CARPET PROTECTOR AVAILABLE  
\* FREE ESTIMATES

## A&M FLOOR SANDING CO.

Sanding, Staining and Refinishing  
Wood Floors for 2 Generations

(Sanding & Repainting Porch Floors a Specialty)

439-7809

## George W. Frueh Sons

Fuel Oil • Kerosene  
Service Anyday — Anytime

**Mobil®**  
436-1050

### GREAT BUYS

**\$65,000**—Immaculate styled Delmar offers living room with fireplace, formal dining room, eat-in-kitchen, central air and much more.

**\$128,500**—Slingerlands French Mansard Colonial features 4 bedrooms, 2½ baths, sunken living room, family room with fireplace. Call for more details on this lovely home.

**\$92,500**—This 4 bedroom, 2½ bath Colonial in the Kenholm section of Delmar offers 2 zoned gas heat, pool privileges and many more amenities.

**\$41,500**—Owner will finance to qualified buyer this 3 bedroom Cape in Delmar. Living room, dining room and family room. Large lot. Call for particulars.

**\$105,000**—Beautiful Slingerlands Colonial, 3 bedrooms 1½ baths, Florida room, plus income apartment.

**Mortgage rates are up, but there are alternatives.  
Call for information on creative financing.**

**PICOTTE**  
REAL ESTATE

439-4943  
205 Delaware Ave.  
Delmar, NY



**We bring people home.**

### NEW SCOTLAND

## New plans for Swift Rd. water

New Scotland is going to try again to come up with a plan to supply water to the approximately 20 families on Swift Rd., just south of Voorheesville water district.

The town board agreed last week to appropriate \$1,400 for a new study of the area, to be performed by the Albany engineering firm of Smith and Mahoney. A year ago, the board had decided it would be impractical to provide the hookup because the water pressure at the proposed tap-in at Rt. 85 is zero.

But town attorney Fred Riestler said Wednesday Smith and Mahoney is looking at another solution to the problem which would drastically reduce the cost of a pumping station and may bring the costs in bounds.

Even so, warned Town Supervisor Steve Wallace, "the only way this will fly, to be perfectly honest, is if we can get FHA money at five

percent."

The Swift Rd. residents, who rely now on wells, were rebuffed a year ago by both the town board and the Voorheesville Village Board. The village invoked a general policy against selling water outside its district limits, and the town decided the project was not feasible.

The town board also discussed the Aug. 1 deadline for the closing of the town's landfill operation—a deadline which will not be met.

Under pressure from the state and the county, New Scotland has agreed to join Albany's ANSWERS project, which will process refuse to be burned to produce steam for downtown Albany. But the city is insisting that the suburban towns build transfer stations and haul their garbage into the ANSWERS site in large vans—a requirement which substantially increases the costs. Negotiations are still in progress, and no work on a transfer station has started.

Wallace said he talked with county officials recently. The



## Catalpa House

Lunch 12-2 p.m. Wed.-Sat. Brunch 11-1 p.m. Sun.  
Dinner 6-8 p.m. Fri. & Sat. and 1-6 p.m. Sun.

Weekly & Overnight Accommodations

797-3627

439-5008

797-5154

Rensselaerville, N.Y. (Corner Rt. 85 and Main St.)

## sue zick interiors

The July Better Homes and Gardens  
features chicken coop storage units.  
so do we!

hours:  
tues. - thurs.  
9:30 - 2:30

evenings and  
saturdays by  
appointment

tollgate slingerlands 439-3296

Aug. 1 deadline will not be enforced, he assured the board. "We're still cordial, but not as cordial as we used to be," he added. "I think I heard some swords rattle."

And Highway Superintendent Peter Van Zetten noted that the deadline is by no means an artificial one. "That landfill is pretty much filled," he said.

In other business, the board:

- Agreed to advertise for bids Aug. 6 for garbage pickup and for the sale of a 1948 bulldozer.

- Agreed with board member Herb Reilly that the vita course (fitness trail) at the town park is in sad repair and needs to be cleared out and the signs replaced or repaired. "People won't use it now—they'd get lost," said Reilly. Van Zetten was asked to look into the matter.

- Listened to complaints from two Feura Bush residents about loose dogs. Wallace did report that the town is still working on ways to buy water from Bethlehem for Feura Bush residents, and that he has signed an option for the proposed town park in that area. "So something is happening down there," he said.

In Clarksville, *The Spotlight* is sold at the Clarksville Supermart.

### Bridge closed

Grosbeck Rd., which runs between Flat Rock Rd. and Tarrytown Rd. in New Scotland, has been closed to through traffic while the Albany County Highway Department reconstructs the bridge over the Onesquethaw. New Scotland Town Supervisor Steve Wallace said residents are concerned about the long ride around, but that he has been assured by the county that the work will be completed as quickly as possible.

### Recycling schedule

There's a change in scheduling for recycling of bottles, cans, papers, metal, rags and old appliances in Voorheesville through the auspices of the First United Methodist Church.

Shirley Johnston, co-chairperson of the church's mission commission, which sponsors the project, says Voorheesville doesn't seem to have enough renewable waste for monthly collection, so the schedule will change to every three months.

The next dates for the truck to be in the parking lot behind the church is Sept. 19 and 20. Mrs. Johnston requests residents to hold recycleables until that time.

### Posters win bicycles

Two voorheesville Elementary students have won a special art contest judged by cartoonist Hy Rosen and were presented bicycles by the Albany Tulip Queen at the recent "Family Life Festival" in Latham.

Christine Veeder, daughter of Mr. and Mrs. Brian Veeder, and Ryan Smith, son of Mr. and Mrs. William J. Smith, were two of four finalists in a capital area poster contest. Students of first grade teacher Wanda Knapp entered the contest as a class project.

### Safe driving course

The Bethlehem Chapter of AARP will be giving an eight-hour driver improvement course for drivers over age 55 on Saturday, July 8 and 25. Unlike earlier courses, this course is open to people who are still working. Students must attend both sessions.

Intended for insurance and point reduction, the eight-hour course is approved by the New York State Motor Vehicle Department.

For more information and to register, call J.W. Campbell at 439-1381.

\*\*\*\*\*

## Albany Auto Radiator

Expert Radiator Repairs  
1758 Western Avenue  
Albany

Mon. - Fri., 8-5  
**456-5800**

\*\*\*\*\*



### Of Good Hamburgers

We bake our own hamburger buns—not because it's cheaper, but because it's better

- ♥ More Substance, more flavor, more gusto
- ♥ We've become a match-maker—we've brought together (like a marriage) the best bun in town and the best hamburger in town
- ♥ made from U.S.D.A. Choice Western Steer Beef, ground fresh daily on our premises
- ♥ As a wedding present ♥ Buy any one of our hamburger features and get the second one at half price ♥

Offer good for a limited time, and valid only during lunch (11:30a.m.-2:30p.m.)

# Tools

## RESTAURANT

Home-style cooking at attractive family prices.

283 Delaware Ave.  
Delmar

7 a.m. - 9 p.m. every day  
439-9111

## John Normanside

Thank you to all our customers. We are one year old at the Plaza

**JULY 13th-18th**

CAKE AND WINE STOP IN  
SENIOR CITIZEN DISCOUNTS  
WATCH FOR OUR MONTHLY COUPON SPECIALS

## John's Normanside

Beauty Salon Delaware Plaza

439-5621

NEW NUMBERS

439-8518

**VOORHEESVILLE  
Court reverses  
sewerage ruling**

An Appellate Division ruling upholding the appeal of a private utility firm serving the Salem Hills residential development has thrown the three-year-old rate controversy back to Voorheesville village board.

The latest decision reverses the 1980 ruling of Justice DeForest Pitt in State Supreme Court that affirmed the 1978 decision of the village board setting the

monthly rate at \$14 per dwelling. The Salem Hills Sewerage Corp., a subsidiary of Rosen-Michaels, Inc., developers of the subdivision, had sought a rate increase from \$10 to \$29.05 per month per dwelling, contending that it was operating in the red and was financially unable to make system improvements mandated by the state.

When the village board, sitting as a municipal public service commission, restricted the rate increase to the \$14 level after a series of public hearings and meetings with

fiscal and engineering consultants, the sewerage firm went to court.

In its ruling last month, the Appellate Division said, in effect, that the village board should include depreciation and the utility's return on investment in determining the monthly rate. In its original decision, the village board contended that the firm was not enlisted to depreciation because homeowners had allegedly paid for the plant and system in the purchase price of their homes.

The legal setback leaves the village board with two options: re-evaluate the situation and determine a new rate, or file an appeal of the Appellate Division decision with the Court of Appeals, the state's highest court.

**School study grant**

The State Energy Dept. has awarded a grant of \$4,444 for a technical analysis of the Voorheesville Elementary School, according to an announcement by Assemblyman C.D. (Larry) Lane.

**Voorheesville  
News Notes**  
Maryann Malark 765-4392

Twenty-two fifth graders at the Voorheesville Elementary School celebrated their own flag day the last week of school. Aided by teacher Deborah Croscup and parent volunteer Joan Traudt each student exhibited a state flag he or she had made. The making of the 12 by 18 inch felt flags was the culminating activity of their social studies curriculum, the study of the United States.

Each child selected a state in September and wrote a business letter to the governor of the state chosen. Students requested information about the state and then combined it with library research to form a 15-page report. These booklets with their flags were on display for parents and fellow students to enjoy on Wednesday, June 17. As a special treat each child brought in a food associated with a particular state for everyone to sample. One child had peanuts from Georgia, another maple sugar candies from Vermont and another oranges from Florida.

Effective today the preschool story hour sponsored by the Voorheesville Public Library will be held on Thursday mornings only at 10:30 a.m.

Due to the large numbers of children who have expressed an interest in the Summer Reading Club at the library, it has become necessary to split the group in half. Children who will be in kindergarten through the third grade in September will meet on July 9 and 23 and Aug. 6 and 30 from 3:30 to 5 p.m. Children who will enter fourth through sixth grade will meet at the same time on July 8 and 22 and Aug. 5 and 19. The date for the party will be announced later.



**SKIPPYS  
MUSIC**  
340 DELAWARE AVE., DELMAR, NY  
Musical Instruments  
Accessories—Repairs  
Rentals—Instruction  
439-2310 Mon-Fri Noon-6 Closed Sat  
THRU LABOR DAY

**WASTE KING FACTORY AUTHORIZED  
DISHWASHER**

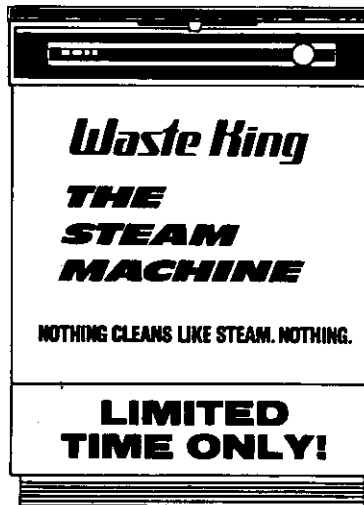
**SALE**

**"WE'RE LETTING OFF STEAM"**

**Features:**

- Steam wash cycle
- Stainless steel tank and wash arm
- 20-year limited warranty (the best in the business)
- Adjustable upper and lower baskets
- Designer door panels

Leave the dirty dishes for later. Come down now to see the amazing Steam Machine dishwashers from Waste King - because nothing cleans up dried-on, baked-on food like steam. And at these low prices, you can clean up on the Steam Machine.



**Waste King  
THE  
STEAM  
MACHINE**  
NOTHING CLEANS LIKE STEAM. NOTHING.  
**LIMITED  
TIME ONLY!**

No. 55888

**Steam Machines Starting at \$499.00.  
Steamless Stainless Steel Starting at \$399.00.**



**Delmar  
Interior Designs** 439-5250  
228 Delaware Ave., Delmar



Flag-waving fifth graders at Voorheesville Elementary School.

We continue our listing of Clayton A. Bouton Junior-Senior High School students who have been on the honor roll three times during the 1980-81 school year:

Freshmen — Elaine Bartley, Trisha Bulgaro, Christine Cillis, Jeffry Clark, Heather Dolin, Raymond Donnelly, Susan Dunning, Karen Flewelling, Karen Foley, Kirsten D. Ford, Michelle Huth, Marybeth Jackson, Kerry Kelly, Wendy Knapp, Lisa LaDuke, Patricia Lasch, Patricia Martin, Elizabeth Mattfeld, Michael McCarty, Peter

McMillen, Kirsten McMullen, Darcy Meachan, Janet Merkley, Marie Michele, Roger Murphy, Laura Oates, Richard Oden, Lauren Pearce, Sandra Peragine, Sean Rafferty, Micheal Ricci, Jeffrey Rockmore, Mary Rogers, Frances Spreer, Ellen Sutherland, Tammi Tate, Robert Trombley, Edward Volkwein, Denise Way and Christopher Zeh.

Grade 8 — Douglas Arthur, Debra Bausback, Lewis Bernstein, Courtney Brennan, Jeffry Caimano, Michael Cappadozy, Brian Casey, Katherine Danforth,

Christine Fernandez, Peter Fisch, Ann Grassucci, Lara Hladun, Shawn Houck, Susan Howard, Dianne Jackson, Lisa Klein, Michael Larabee, Karen Lonnstrom, Mary Beth Manning, Sharon McKenna, John Meyer, Edward Mitzen, Suzanne Munyan, Erin Neighmond, John Paradise, Paul Plummer, Kerry Rapp, Tina Rasmussen, Donna Marie Richardson, Josph Rissberger, Elizabeth Riviello, Victoria Ross, Heather Sanderson, Cynthia Sauer, Carolyn Schultz, Todd Smith, Christine Toritto,

Robert Vanderveer, Clinton Wagner, Jill Wise and Thomas Wight.

### Keep it fresh

Stock up this summer with some help from the library. A free workshop on food preservation and canning will be held Friday, July 10, from 10 a.m. to noon, at the Bethlehem Public Library.

Joanne Gage of the Albany County Cooperative Extension will present a "crash course" in freezing and canning techniques for both the beginner and the experienced. Pre-register by calling the Cooperative Extension.

## WEIGHT CONTROL — FOR — ADOLESCENTS AND TEENAGERS

*Nutritional and Supportive  
Counseling on an individual basis.*

**By Appointment Only**

**DORIS M. VINEBERG, R.N.B.S.**  
Phone 439-7586



## STONE AND FRAME CHARMER



- Newly Listed Three Bedroom Home in the Heart of Delmar.
- Enclosed Porch and Private Rear Yard.
- Offered at \$63,900.00

Call Helen McLean

# PAGANO

Real Estate  
439-9921

# WEBER

## Planning a Great Future? Big Plans Ahead?



Come Talk With The Friendly  
Full-Service Insurance Office  
Personal Attention To All Your Needs

## OLOF H. LUNDBERG/ TUCKER SMITH AGENCY

159 Delaware Avenue, Delmar 12054  
439-7646

OPEN THURSDAY UNTIL 6:00 p.m.

# City & County Savings Bank

May our high interest & free gifts be with you

# GALAXY GIFTS



## OR MORE

## OR MORE

Your choice—free—with a deposit of \$10,000 or more.

Your choice—free—with a deposit of \$5,000 or more.

- (A) GE CLOCK RADIO... AM/FM digital
- (B) GE ZONAR® BURGLAR ALARM
- (C) BLACK & DECKER® DUSTBUSTER... cordless vacuum cleaner
- (D) BLACK & DECKER® JIG SAW... 2 speeds
- (E) WARING FUTURA II BLENDOR®... push-button, multi-speed
- (F) SPRING BOUQUET STONEWARE... 20-pc. dinner set

- (G) COPPER BOTTOM POT SET... 7 pcs.
- (H) LLAMA OVERNIGHT BAG... 22", soft vinyl
- (I) PROCTOR-SILEX® TOASTER... 2-slice
- (J) WESTCLOX MEN'S WATCH... 17 jewels
- (K) WESTCLOX LADIES' WATCH... 17 jewels

OR \$20 CASH

### About Your Gift Merchandise

Our "Galaxy" offer is one gift per account. All gifts must be picked up at the bank. An alternate gift choice within the same category will be offered should demand exceed supply. Actual merchandise may vary slightly from the illustration. The bank assumes no liability to customers or other individuals for damages, direct or indirect. Warranties — express or implied — are the responsibility of the product manufacturer.

<sup>TM</sup> Trademarks of General Electric Company.  
<sup>®</sup> Registered trademarks: Black & Decker Manufacturing Company; Waring Products Division, Dynamics Corporation of America; Proctor-Silex, SCM Corporation. "Micromate" and "Pyrex" registered trademarks of Corning Glass Works.  
<sup>TM</sup> "Homestead" trademark of Corning Glass Works; "Panhandler" trademark of Proctor-Silex, SCM Corporation.

Reach for the stars with high-interest savings at City & County Savings Bank. Take home a free gift when you open a new savings account or add to your present account with a deposit of \$500 or more... or renew a savings certificate.

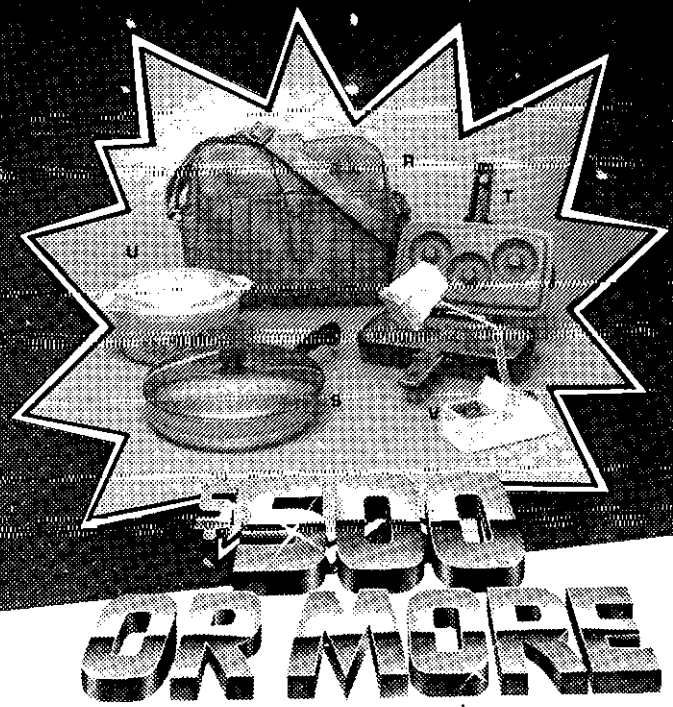
Your investment may be in passbook savings or time deposits. The deposit that qualifies you for a gift must remain on deposit with the bank a minimum of 12 months, or, in the case of a deposit of \$10,000 or more, a minimum of 26 weeks.



**Your choice—free—with a deposit of \$1,000 or more.**

- (L) SPRING BOUQUET STONWARE... 4-pc. completer set
- (M) GE CUSTOM PORTABLE MIXER... 3 speeds
- (N) CORNING MICROMATE®... 10" skillet
- (O) GE AM/FM PORTABLE RADIO
- (P) PROCTOR-SILEX® PANHANDLER™
- (Q) ROBERTSHAW ELECTRIC WALL CLOCK

**DEPOSITS INSURED UP TO \$100,000 BY THE FDIC**



**Your choice—free—with a deposit of \$500 or more.**

- (R) TOTE BAG... soft vinyl
- (S) COPPER BOTTOM SKILLET... 10 1/4" diameter
- (T) GE TRIPLE TREAT® DONUT MAKER
- (U) PYREX® HOMESTEAD™ CASSEROLE... 2 1/2 qt., cover included
- (V) WINDSOR HIGH-INTENSITY LAMP

**Passbook Savings**

Save for a bright future with Regular Savings or Day of Deposit to Day of Withdrawal Savings. With either type of account your deposits earn a 5.73% annual yield\* on an annual dividend of 5.50%, compounded daily and credited quarterly.

\*Annual yield is earned if principal and interest remain on deposit for one year.

**Savings Certificates with sky-high interest**

2 1/2-Year Certificates

**00.00% 00.00%<sup>1</sup>**  
effective annual yield on interest per annum

MINIMUM DEPOSIT ONLY \$500

Rate Effective Tues., July 7-Mon., July 20

The effective rate at the time you buy your certificate is guaranteed for the full 30-month term. At City & County Savings Bank, your interest will be compounded daily and credited monthly. To realize the yield shown, principal and interest must remain on deposit for a full year. Substantial interest penalty is required for early withdrawal. This offer may be withdrawn without notice.

**Six-Month (26-week) Certificates at the latest money market rate**

**15.027% 14.300%**  
effective annual yield on interest per annum

MINIMUM DEPOSIT \$10,000

Rate Effective Tues., July 7-Mon., July 13

The rate in effect when you buy your certificate is the rate you will receive for the entire six-month term of your investment. Your interest is credited monthly. To realize the yield shown, principal and interest must remain on deposit for a full year. Your certificate would have to be renewed at maturity at the interest rate shown to earn this yield. That rate may be higher or lower at time of renewal. Under federal regulations, compounding of interest during the term of this deposit is not permitted, and substantial interest penalty is required for early withdrawal. This offer may be withdrawn without notice.

Disclosure statements under the Truth-in-Savings Law are available at all offices of City & County Savings Bank

**We're here on your account.**



ALBANY BETHLEHEM ROTTERDAM SCHENECTADY-NISKAYUNA



Member FDIC

**Whirlpool**  
factory  
service

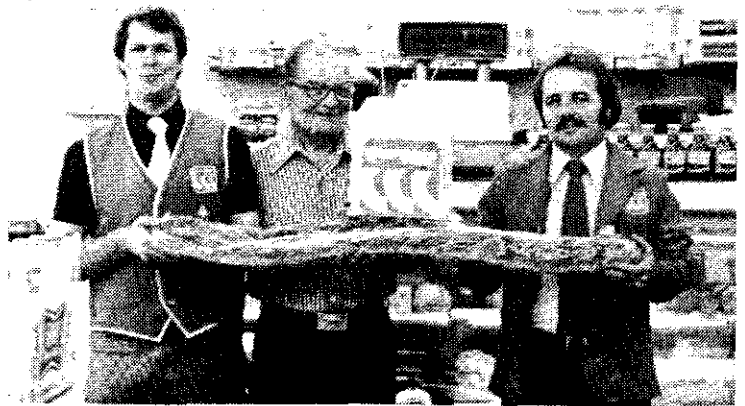
# APPLIANCE SERVICE CO.

456-2079

439-9705

A Division of  
Mr. Macs Appliance, Inc.

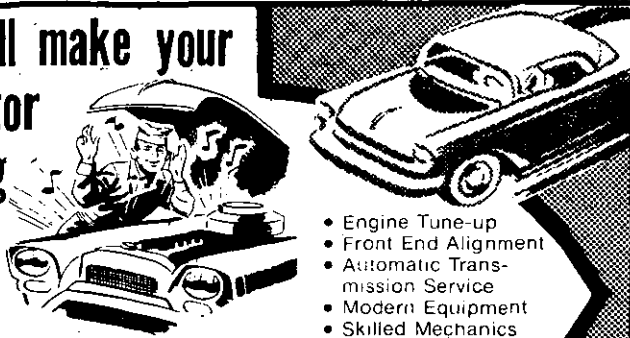
**BILL McGARRY**



The Convenient Food Market in Slingerlands found a unique way to announce a recent change in management—this rather substantial sandwich for the Bethlehem Lions Club. From left, new manager Tom Kornmeyer, Sylvester J. Bower, Lions Club secretary; and Pat Pelton of Convenient.

*Spotlight*

We'll make your  
motor  
sing



- Engine Tune-up
- Front End Alignment
- Automatic Transmission Service
- Modern Equipment
- Skilled Mechanics

## BAILEY'S GARAGE

Oakwood Road, Elsmere  
Phone 439-1446

# The Squire Inn



Sandwiches • Pizza • Take Out Orders Also

### HAPPY HOUR

Mon.-Fri. 4:00 - 7:00 p.m. • Bar Mixes \$1.00

### LADIES' NIGHT

Thurs. 7:00-11:00 p.m. • Bar Mixes \$1.00  
Party and Banquet Facilities Available 7 Days A Week

Mon.—Thurs. 11:00 a.m.—1:30 p.m.

Fri. 11:00 a.m.—4:00 a.m.

Sat. Noon—3:00 a.m. Sun. Noon—10:00 p.m.

**Town Squire Shopping Center**  
Route 9W, Glenmont, NY • 436-4256

Your Host, Don Sheldon

### Weight control for teens

Doris M. Vinebert of Delmar, a former Weight Watchers lecturer health educator, is offering a new counseling service for weight control for adolescents and teen-agers.

"The realization that obesity can be a very real social and emotional handicap underlines the importance of learning to control one's weight early in life," says Mrs. Vinebert.

A graduate of Russell Sage College School of Nursing, Mrs. Vinebert has had 25 years of experience in working with young people. She is a school nurse-teacher and health educator, and a professional writer and playwright.

The service is by appointment only and is individual-

ized to the young person. For information call 439-7586.

### Interning with state

Lisa E. Kelp has been awarded an internship for the summer in the Albany Semester Program of the State University College at Oswego. She is working in the governor's Office of Development Planning.

She will begin her senior year at Oswego in September. She is majoring in business administration with a minor in economics and a concentrate in finance. She will also serve an internship in the travel office, part of the budget office at the college.

She is the daughter of Mr. and Mrs. Harold W. Kelp, Elsmere Ave. Ext., Delmar, and was graduated from Bethlehem Central High School in 1978.

## UNSURPASSED REDUCTIONS EVERYTHING MUST GO

COATS • RAINCOATS  
DRESSES • LINGERIE  
SPORTSWEAR

SHOP EARLY FOR  
BEST SELECTION

*Dorothy  
Lynn*

282 Delaware Ave.  
Delmar • 439-4101  
Tues.-Sat. 9-5:30





**Thomas J. O'Connor**

**Named chief engineer**

Thomas J. O'Connor of Glenmont has been promoted to chief engineer of the New York State Thruway Authority.

Assistant superintendent of thruway maintenance since 1970, he succeeds John P. Pendleton of Delmar.

Before joining the Authority, O'Connor was employed by the New York State Department of Public Works where he was project engineer on numerous construction projects from 1954 until 1967, when he became resident engineer for Seneca County.

A licensed New York State professional engineer, he attended Harpur College and Syracuse University. He was born in Canandaigua.

**Appraiser honored**

Edward DeL. Palmer, president of DeL. Palmer Appraisal Corp., Albany, has been elected to the American Society of Real Estate Counselors of the National Assn. of Realtors.

Palmer, a Slingerlands resident, is the first Capital District appraiser to be named to the prestigious organization, which has only 600 members across the United States.

*In Voorheesville, The Spotlight is sold at the Grand Union and Voorheesville Pharmacy.*

**17th Annual  
Wood-Mode Kitchens  
SUMMER SALE!  
AUTHORIZED ONCE-A-YEAR SAVINGS EVENT . . .**



**SAVE UP TO  
30%  
THRU AUGUST 15th**

Pictured above is "ALPHA"—Wood-Mode's new European look, Contemporary Cabinetry

**SUPERIOR INVESTMENT**  
Act now and save during our 17th Annual Summer Sale. An investment in Wood-Mode, America's best selling custom cabinetry, will appreciate in value and eventually become an outstanding tax shelter. This is one of the few ways for you to have inflation on your side for a change.

**FINE CONTRACTOR CRAFTSMEN NOW MORE READILY AVAILABLE.**  
With home building slow, fine craftsmen are more readily available. This means you'll save more money if you act now.

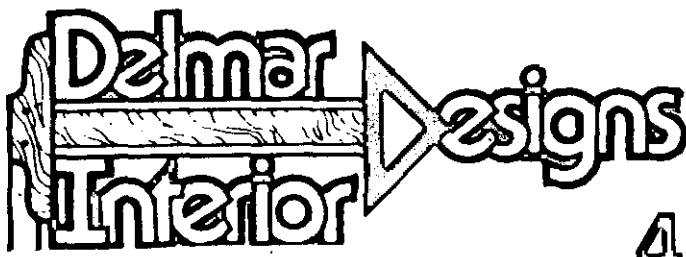
**EXCLUSIVE GENUINE HAND RUBBED CABINETRY**  
Genuine hand rubbed cabinetry is just one of the reasons why Wood-Mode is number one in custom cabinetry. Wood-Mode is the affordable status symbol for your kitchen, bathroom,

family room, bedroom, den or sewing room. Only Wood-Mode in custom quality cabinetry features tough durable PVC vinyl laminated interiors and shelf surfaces as well as solid oak drawers. In fact Wood-Mode interiors are as tough as most kitchen counter tops.

**WIDEST SELECTION**  
Wood-Mode solid wood cabinetry is offered in eighteen cabinet styles and finishes (including Alpha Contemporary Cabinets) plus four woods (oak, maple, cherry, or pine) and sixty natural or enamel finishes. The final finish is painstakingly hand rubbed by master craftsmen.

**PROFESSIONAL DESIGN STAFF**  
Our professional designers will prepare color perspective drawings and blue prints as well as tasteful color schemes of your kitchen. Our professionals will save you money.

**VISIT OUR EXCITING SHOWROOMS & LET'S DISCUSS A WOOD-MODE DESIGN FOR YOU**



**WOOD-MODE cabinetry  
VISIT OUR  
MODERN SHOWROOM**

**228 Delaware Ave., Delmar, N.Y.**

**439-5250**



### Terri Kleinke bride

Miss Terri Ann Kleinke, daughter of Mr. and Mrs. Paul Kleinke, Delmar, and Oakley Salisbury III, son of Mr. and Mrs. Oakley Salisbury II of Clarksville, were married on May 16 at St. Matthew Lutheran Church, Albany. Rev. James F. Von Schenk officiated.

Cyndi Hunter of Albany was maid of honor and Danny Martino of East Greenbush was best man. Bridesmaids were Debbie Kleinke, Elaine Salisbury, Ruth Kleinke and Pam Osterhout. Flower girl was

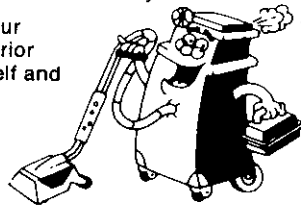
Mrs. Oakley Salisbury

## FAST, PROFESSIONAL RESULTS... You can do it yourself.

Rug Doctor make it easy to clean your house, auto, or upholstery with superior machine and chemicals. Do it yourself and see the results!

Rent today at:

Roger Smith's  
Decorative Products Co.  
340 Delaware Ave., Delmar, NY  
439-9385



**Rug Doctor**

## UNIQUELY WEEKLY

Subscribe to

# The Spotlight

for professional news coverage  
of Delmar, Slingerlands, Voorheesville, Glenmont  
and nearby communities.

**\$7.50 a year—\$13.50 two years**

(within Albany County—elsewhere \$9.00 a year)

THE SPOTLIGHT, 125 Adams St., Delmar, NY 12054

Please enter my  renewal  subscription to The Spotlight

I enclose  \$7.50 for one year  \$13.50 for two years  
 \$9.00 outside Albany County

NAME \_\_\_\_\_

STREET \_\_\_\_\_

P.O. \_\_\_\_\_ ZIP \_\_\_\_\_

Bobbi Jean Leonard. Dustin Leonard was ring bearer. Ushers were Tim Houck, Bill Kuhl, Earl Salisbury and Chris Hansen.

The bride and groom are graduates of Bethlehem Central High School. Mrs. Salisbury is employed by the Burt Anthony insurance agency in Delmar. Her husband is employed by the Northeast Fire Equipment Services, Albany. After a wedding trip to Florida, Mr. and Mrs. Salisbury are making their home in Delmar.

### Need summer families

More than 1,000 needy New York City children who registered for Fresh Air Fund vacations this summer will be disappointed unless more families are willing to open their homes and hearts, according to Lisa Semple, Executive Director of The Fund.

Eleven families in Bethlehem and New Scotland already participate in the program, but more are needed, Mrs. Semple said. The first group of children arrive this week, and applications are now being accepted for the second group, due July 21.

"We've raised enough money to send out these children, but we've received fewer invitations than we anticipated," Mrs. Semple said.

Volunteer host families, provide a safe, happy environment for children who have

limited experience with the natural world. The Fresh Air Fund pays transportation and insurance costs. The fund is the only organization in New York City which provides free vacations for children whose families cannot afford to send them away.

For more information call Suzann DiSibio, 785-7457 or Kym Hynes, 459-6740.

### Story hours to begin

Preschool story hours will be held, beginning July 14, at the Bethlehem Public Library on Tuesdays, Wednesdays and Thursdays at 10:30 to 11 a.m. and from 1:30 to 2 p.m.

The volunteer storytellers, ages 11-16, have been trained by the children's room staff. Children must be at least 3 years old to attend and may attend only one half-hour session a week. No registration is required.

### Pancake breakfast

The Delmar Kiwanis Club is holding a pancake breakfast Sunday, July 19, from 8 to 11:30 a.m. at the Elm Ave. Park in the enclosed area near the concession stand. The event will take place rain or shine.

Prices are \$2.75 for adults and \$1.50 for children 12 and under. Proceeds will be used to support youth and community service projects. Tickets are available at the breakfast or from any Kiwanis Club member.

## Women's Discounts have been extended till July 31st

10-20% on:

- ★ TANNING HUT
- ★ NAUTILUS FITNESS PROGRAM
- ★ LIFE CYCLE CONDITIONING PROGRAM
- ★ BABYSITTING (FREE)

Call NOW 439-2778

HOURS:	OPEN	CLOSE
M-W-F	6:30 a.m.	9:00 p.m. (F: 7:30)
T-T	10:00 a.m.	9:00 p.m.
S	9:00 a.m.	5:00 p.m.

154-B Delaware Ave.





**Mr. and Mrs. Heller**

**Wed 64 years**

Mr. and Mrs. Daniel H. Heller of 17 Bartlett Lane, Delmar, celebrated their 64th wedding anniversary June 30 at the Normanside Country Club.

Rose and Daniel Heller were married on the lawn at the Rothrupt home in Feura Bush June 30, 1917. Mrs. Heller taught grades one through eight. Mr. Heller, a graduate of Cornell University, was employed as a federal land bank appraiser. For many years, the Hellers owned and operated Feura Farm in Feura Bush.

**Grange has elections**

The election of new officers in the Bethlehem Grange was recently completed for the 1981-1982 season.

Helen Raynor was reelected master, while Henry Meyer was unanimously made overseer. Raynor was also selected to continue as a leader of the Junior Grange with Randall Drobner.

The following officers were also filled: lecturer Alice Britenbaker; steward, Hazel Martin; lady assistant stew-

ard, Helen VanAlstyne; secretary, Nettie Harding; ceres, Florence Klahn; pomona, Betty Atkins and Flora-Betty Morehouse.

The following male grangers were also elected; assistant steward, Randall Drobner; treasurer, Ben Meyers; chaplain, Clarence Klahn; and gatekeeper, Harry Wickham. Harry Wickham and Harold Williams were elected to three-year terms on the executive committee, which Clarence Klahn will head as chairman.

The members of the Grange are now looking forward to a picnic planned at the Grange Hall for 7 p.m., Saturday. Prospective members or special guests may be invited by present members to the supper portion of the evening. Dates will be set at the picnic for preparation of the Grange's exhibit to be presented at the Altamont Fair.



**CLASS OF '81**

Brown University—Debra Heinemann, Delmar.

Dartmouth College—Anne E. Putney, Selkirk; Walter J. Relihan III, Ithaca (formerly of Delmar); Peter T. Weller, Clarksville.

Hope College, Holland, Michigan—Susan Shanley (magna cum laude).

Marrymount College, Tarrytown, New York—Mary Pat Burdick, Delmar.

Slippery Rock State College—Stacey Beth Levine, Delmar.

Harvard University—Andrew L. Creighton, Delmar. (magna cum laude).

Emerson College, Boston, Mass.—Catherine Jones, Delmar.

College of Wooster—Brian Robert Spindler, Delmar.

Hudson Valley Community College—Denise White, Selkirk, (Union Carbide Corporation Award).

Iowa State University—

Cynthia C. Tilroe, Delmar. SUNY College of Technology—Nancy J. Davis, Delmar.

**Crafts club officers**

New and outgoing officers of the Delmar Home Crafts Club were honored recently at the club's annual dinner. The new officers are Ginny Lueke, secretary; Janet Cornell, treasurer; Arlene Grady, Lydia Ashby and Lois Macri, hospitality, and Adelaide Devenpeck, sunshine. The club plans to enter various items made by club members in the Altamont Fair.

Most Tri-Village Homeowners Prefer



**THE COMPLETE FUEL SERVICE**

FUEL OIL • KEROSENE • GASOLINE  
INSTALLATION OF HEATING  
AND AIR CONDITIONING SYSTEMS

**MAIN-CARE HEATING SERVICE**

The Company to have in your home ... all year round.  
318 Delaware Ave., Delmar • 24-hour Service • 439-7605

**Bartke's**

Rt. 9W • Ravena • 756-2241

**DINNER SPECIALS**

Friday, July 3

Broiled Blue Fish ..... \$7.95

Saturday, July 4

Roast Prime Ribs of Beef ..... \$10.95

Sunday, July 5

Roast Leg of Lamb ..... \$5.95

All complete dinners include salad, rolls & butter vegetables, potato, entree, coffee and dessert

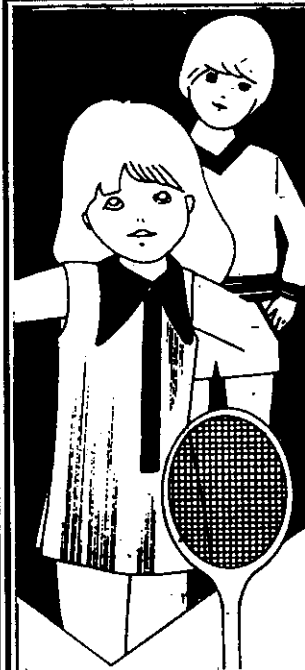
**NOW featuring DINNER THEATRES**

Next Show: July 31, "Last of the Red Hot Lovers"

\$11.95 includes dinner and show  
Make you reservations early!

Tues.-Sat. 5-10 P.M.  
Sunday 4-10 P.M.

BANQUET FACILITIES  
AVAILABLE



**Summer Tennis Camp for the Junior Player**

- 9 one-week sessions starting Mon., June 29. 9 a.m. - 1 p.m. Mon. - Fri.
- Instruction, supervised play and swimming for only \$40 per week.
- Grouped by ability from beginners to advanced.
- Directed by JOHN VADNEY, former All-New England college player, an experienced coach.
- Call for information and application.

southwood  
**TOTAL TENNIS CLUB**

INDOOR COURTS • JUNIOR PROGRAMS

CALL 436-0838

Rt. 9W & Southern Blvd.  
(at Thruway Exit 23) Albany

# SAVE \$75<sup>00</sup>

## ON ANY TILLER IN STOCK

### • Toro • Merry Tiller

### (All Tillers 3-5 Horsepower)

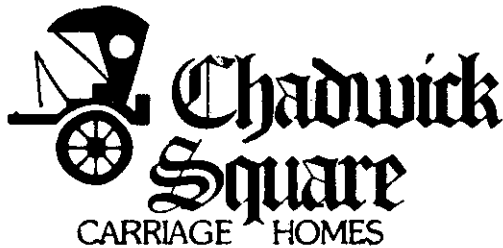
## L.C. SMITH

### Lawn and Garden Equipment

154-B Delaware Ave., Delmar  
(next to Delaware Plaza)

439-9746

## HAVE YOU VISITED



Take a peek now, you'll be glad you did!

from DELMAR SOUTH ON ELSMERE AVE.  
LEFT ON FEURA BUSH, RIGHT ON WEMPLE  
RD.—CHADWICK 1/2 MI. ON LEFT.

Open Daily 12-7, Sat. & Sun. 12-5; Phone 439-9933

## Rosen-Michaels

# Reds

Seafood Restaurant Inc.  
Rt. 9W, W. Cocksackie, N.Y. 12192  
N.Y.S. Thruway Exit 21B  
1-731-9905

## Open 7 Days A Week

## During July & August

## 11:30 A.M. - 9:30 P.M.

## Our Chef Gets A Day Off How About Yours?

## Join us for Lunch or Dinner



## BASEBALL

### Blue Jays shine in all star game

The Schenectady TwiLight All Stars recently defeated the Albany TwiLight All Star team 3-2 by relying heavily on their Delmar Blue Jay members, who had four of the team's seven hits.

Blue Jay Ward Phelan helped the Schenectady team with a third-inning solo home run, while Mickey Brantley had two hits and Neil Stickles had a single. Phelan, also saved a potentially tying run with an accurate throw from centerfield to the plate.

In regular league play, the Blue Jays completed two innings of a previously suspended game to easily defeat Casazza's, 11-2. Pitcher Neil Stickles held Casazza's to only three hits and now boasts a 3-0 league record. Mickey Brantley's triple and Gary Tremblay's double were the highlights of the Jays' ten-hit total.

A second game against Casazza's Shamrocks was marred by poor defensive play from both clubs. Nevertheless, late inning heroics by the Blue Jays and a last-inning late run by Tony Curro won the game 10-9. Six of the Jays' runs came in the last two innings of the game. Fine defensive plays were also turned in by Joe DiBello, who made a spectacular over-the-shoulder catch in left-field, and catcher Gary Tremblay, who dashed into a screen to catch a foul ball.

These most recent Blue Jay wins boost the team's league record to 5 and 3, which places them in a tie for second place with the Polish National Alliance team that the Jays defeated earlier in the season.

### VOORHEESVILLE BABE RUTH Standings, July 5

	W	L		W	L
Dodgers	6	2	Spotlight	4	4
Brne. Yanks	4	2	Rod & Gun	3	5
Kiwanis	3	2	Brne. Mets	0	6
St. Matt.	3	2			

### BETHLEHEM BABE RUTH Standings, July 3

	W	L		W	L
Skippy's	8	4	Blue Cross	6	7
Natl. Sav.	8	4	Main Care	2	9
Gen. Elec.	6	6			

## B.C. names coaches

Tyrone Bynoe has been named second assistant football coach for Bethlehem Central High School for the 1981-82 year. The position is new.

Assignments approved by the school board at its July 1 meeting are: Eugene Fitzpatrick, varsity football; Kenneth Hodge, assistant; Gregory Catalano, JV football; Jeffrey Gallo, assistant; John DeMeo, freshman football; and Robert Salamone, assistant.

Also, Eugene Lewis, varsity soccer; Zachary Assael, JV soccer; John Fuchs, freshman soccer; John Nyilis, cross-country, and Donald Farrell, golf.

Also, Ann Rose, assistant cheerleading; Vicki Bylsma, girl's varsity soccer; Jesse Braverman, girls' JV soccer; Grace Franze, girls' varsity tennis, and Ray Sliter, girls' varsity swimming.

At the middle school, boys' intramurals will be supervised by Nelson Harrington and girls' intramurals by Mary Lussier.

### TRI-VILLAGE LITTLE LEAGUE Standings July 5

SENIOR LEAGUE			
	W	L	
Man. Han.	9	1	O. Corning
Handy Andy	8	1	CPM
Starwood	5	5	Big 'M'

MAJOR LEAGUE			
American	W	L	National
**Roberts	11	4	**Main Care
Col Toyota	8	7	Spotlight
CYC Realty	8	7	Farm Fam
Meyer's Bic	5	10	Gen. Elec.
Price Green	1	13	Andriano's

INTERMEDIATE LEAGUE			
American	W	L	National
Del. Honda	13	2	Main Care
Farm Fam.	12	3	Keystone
Buenau's	11	4	Nautilus
Paper Mill	11	4	Serv. Master
Royce Day	9	5	Gen. Elec.

JUNIOR LEAGUE			
American	W	L	National
*Frank Muia	12	0	**Ans. Serv.
Prof. Auto	10	4	Klersy Rity.
Cap. Kitch.	6	7	Guild. Agcy.
Del. Printers	6	8	Klersy Bldrs
Sutter's	5	7	Germann's
Pat & Bob's	4	8	W'makers

Ties — Frank Muia, Sutter's 2, Klersy Realty 2, Guild, Agcy. 3, Germann's, W'makers

\*Clinched Division Title  
\*\*Clinched Tie For Division Title

### Boat recovered

A 14-foot aluminum boat taken from the Texaco storage facility off Rt. 144 in Glenmont June 24 was recovered last Thursday about a half mile down river.

**RUNNING**

**Town's runners have field day**

Bethlehem's many running enthusiasts had their own field day Saturday in the sixth annual Firecracker Footrace at the Elm Avenue Park.

The race, part of the town's Family Day activities, had 10 different divisions, and winners in each were awarded placques. All children who participated in the race received ribbons. The popular race was co-sponsored by the Town of Bethlehem Parks and Recreation Department and Courtside Tennis/Sportshoes of Delmar.

The Division I girls group consisting of 9-11 year olds, was won by Maggie Whitney, with second place going to Leanne Frye. David Cunningham won the 9-11 boys race, while Tom Nyilis placed second.

Tania Stasiuk broke the tape first in the 12-14 girls race, while Katie Whitney came in second. Joseph Loud-

erback won the corresponding boys race, while Mark Frye placed second.

In the 15-18 year-old women's division, Colleen Nyilis was victorious. Bill Street placed first and Mike Nyilis second in the 15-18 men's group.

Rich Switzer placed first in the 19-24 men's age group, while Jeff Hickey came in second.

Bonnie Whitback and Carol Hoffman placed first and second respectively in the women's 25-29 age bracket, as did Tom Bulger and Rick

**BETHEHEM TOMBOYS**

Standings, July 2

**SENIOR**

W L

Trvlng Tm. 4 5

**MAJORS**

Masonic	3 0	Channel 10	1 2
Tri-Village	2 0	Healy Rlty.	0 2
Kuivila Rlty.	1 1	Beth. Elks	0 2

**INTERMEDIATE**

W L

Vogels	3 1	Atl. Cement	2 2
Riccardos	2 1	BPW	2 2
Buenau's	2 2	Sutter's Mill	1 2
		Dunston	1 3

**MINORS**

W L

Denbys	4 0	Del Lanes	2 3
Century 21	4 1	Sportshoes	1 3
Farm Fam.	3 1	Brockley's	1 3
GE Plastic	2 3	Spotlight	0 3

**CHURCH SOFTBALL LEAGUE RESULTS**

Delmar Reformed 19, St. Stephen 14  
Bethlehem Community 13, Bethany 9  
Cluster 11, Glenmont 8  
Methodist 10, Voorheesville 7  
Colonie 10, New Scotland 4  
Presbyterian 7, Wynants 5  
Albany 23, Knox 4

Standings July 2

	W L		W L
Cluster	9 1	Albany	4 6
Colonie	7 2	Del. Ref.	4 6
Del. Pres.	7 2	Voorville	3 5
Glenmont	7 2	Wynants	3 5
St. Thomas	7 2	Bethany	3 6
Methodist	5 4	St. Steph.	1 8
New Scot.	5 5	Knox	0 10
Beth. Comm	4 5		

**COUNSELING**

*Marriage - Divorce  
Parent/Child - Family  
Personal*

*Professionally Certified  
Counselors Experienced In  
Brief Treatment*

*Fully Accredited Agency  
Family and Children's  
Service*

**462-6531**

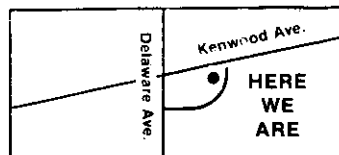
12 So. Lake Ave. Albany

**BUD JONES**

**SERVICE**

**Complete Auto Repairing  
Road Service and Towing**

14 Grove St., Delmar, NY



- Brakes • Lubrication
- Wheel Alignment & Balance
- Ignition Service
- Electrical • Air Conditioning
- Dyno Tuning
- Foreign Car Service
- Cooling System Problems
- Gas Tank Repairs

7:30 a.m. - 5:30 p.m. Monday - Friday  
Saturday & Sunday Emergency Road Service Only

**439-2725**

Nash in the men's group.

In the women's 30-34 year old race, Kathy Keenan won first place while Cindy Kelly claimed second. Frank Ripple won the men's race and Jim Tebo came in second.

Carolyn Riley placed first and Doris Davis second in the women's 35-39 race, with Bob Wallace winning among the men and Mike Nichols claiming second.

In the 40-44 men's race, Ed Thomas won and John Lane came in second.

The 45-49 men's race saw Bob McFarland win and John Stokoe second.

Finally, in the oldest age group of those 50 years of age or over, Mary Scott won among the women and Lou Brickman and Tom Scott went one and two respectively in the men's division.

**SLINGERLAND'S  
NEWEST  
COMMUNITY**

**Surrey  
Mall**

Just opened and already the pride of the area. Visit our unique Display Center

featuring nine distinctively different home designs being built in Surrey Mall — you'll find one that fits your lifestyle.

Surrey Mall, an address of distinction, in Slingerlands.

from

**\$85,000**

Directions: Out Albany's New Scotland Ave. (or via Rt. 85 from Campus Area). Turn right at Surrey Mall sign one mile beyond Blue Cross/Blue Shield building.

Sale Office Open Daily 10-7, Sat. & Sun. 12-7

**Rosen-Michaels**

**THE KIWANIS CLUB  
OF DELMAR, N.Y. INC.**

Is Holding

**A PANCAKE BREAKFAST**

On Sunday July 19, 1981  
from 8:00 a.m. to 11:30 a.m.

*Rain or Shine*

At the Elm Ave. Town Park, in the enclosed area near the concession stand

**Prices: Adults \$2.75  
Children (12 & under \$1.50)**

All monies collected will be used to support Youth and Community Service Projects!

**Tickets are available at the door or from any member of the Delmar Kiwanis Club**

**BURT ANTHONY ASSOCIATES**

FOR INSURANCE



**Burt Anthony**

July is a month for Leo's — Leo's are definitely different people, but they still need insurance — all Leo's can get protection by calling

**439-9958**



208 Delaware Ave.  
Delmar

**SWIMMING**

**Small Dolfín group scores at meet**

Less than 20 Delmar Dolfín swimmers decided to spend the July 4th weekend at the 1981 Firecracker Swim Meet held annually at the Clifton Park pool. With most of its swimmers away on vacation or at various swim camps, the gigantic Dolfín team had but a few dedicated ambassador-racers to represent it at this state-wide invitational meet.

Nevertheless, several Delmar children distinguished themselves. In the eight and under girls division, Merideth Dix competed in every stroke to come away with a second in the 50 meter breaststroke, a third in the 50 fly, and a fourth and a fifth in the freestyle races. In the eight and under boys group, Drew Patrick more than equalled Merideth's performance by winning the high point runner-up title. He laid claim to a first place in the 50 breaststroke, seconds in the 50-

meter backstroke, the 50 fly and the 50-meter freestyle and a third in the 100-meter freestyle.

In the 10 and under girls group, Christina Rudofsky did well with excellent "B" division times, as did Keith Dix in the 10 and under boys division. Mike Miller and Chris Engstrom both did well in the "C" division times of this age group.

Moving up to the 11 and 12 division, Lynn Picelli placed first in the 100 meter breaststroke. Erin Morrissey, Kathleen O'Neil, and Courtney Roos all turned in good times in the slower "C" division of the 11 and 12 girls.

The "Never-fail" 13 and 14 year old boys once again did the Dolfíns proud by winning the high point trophy in their age group. Individually, Dave Young won thirds in two freestyle races and fourths in both the breaststroke and the individual medley. Matthew Holland won two thirds and two fifths, while Scott Apicelli placed second in the 100 meter

breast and third in the 100 meter butterfly. Pierre LaBarge, Eric Patrick, Jim Krajeck and Fred Rudofsky II placed high in the "C" division of the 13-14 boys.

In the relay department, the 13-14 boys medley relay team, which must have each member swim one of the four basic strokes, placed first thanks to Matt Holland, Dave Young, Scott Apicelli, and Pierre LaBarge. The 13-14 boys freestyle relay team also placed first with the same four boys who won the medley relay.

Many Delmar Dolfíns will be returning to the Clifton Park pool this weekend to try to qualify for the Empire State Games to be held later this summer.

**Tournament a success**

More than 200 spectators watched the Bethlehem Soccer Club's recent 5½ hour intraclub tournament.

A total of 27 games were played by the club's soccer buffs in the 8 and under, 10 and under, and 12 and under age groups last Saturday at the Bethlehem Central High School. The Navy team's 36 members were named the tourney's champs. The green team claimed second, followed by the third place Red Team. The 10 and under Green team as well as the under 12 red team claimed honorable mention for going undefeated with records of 10-0 in their seasons.

Well over 100 club members will still be active into July, as they have 7 to 12 games left on the travelling circuit.

The Big Sale Is Now On At. . .

**Marcus DECORATORS**

- ALL Draperies! (including Waverly & Schumacher)
- ALL Bedspreads!
- ALL Roller Shades!
- ALL Venetian Blinds!
- ALL Woven Woods!
- ALL Custom Slipcovers!
- ALL Custom Upholstering!

FREE SHOP AT HOME SERVICE

489-4795

**Marcus DECORATORS**

STUYVESANT PLAZA  
Mon.-Fri. 10-9  
Saturday 10-5:30

**Bethlehem Cable Channel 16**

(all times a.m.)

**Monday, July 13**

- 10:30—Future Talks
- 11:00—Panorama
- 11:30—Food for Youth
- 12:00—Women Together
- 12:30—Fantasy & War Games

**Tuesday, July 14**

- 10:30—Christopher Closeup
- 11:00—Video 80, Bob Hebler
- 11:30—Capital District Living
- 12:00—Gospel Showcase
- 12:30—Story Time, Bethlehem Library

**Wednesday, July 15**

- 10:30—Live Wire
- 11:30—All God's Children
- 12:00—Search for Truth

**Thursday, July 16**

- 10:30—Sports Focus, Mike Meola
- 11:00—Access Magazine

Sponsored by **Alfred's**

**AL'S BARBER SHOP**



AL CAPPETTI, Prop.  
34 MAIN STREET  
(Next to Post Office)

Voorheesville

HOURS:

Tue. 8 a.m. to 7 p.m.

Wed., Thurs., Fri.,

8 a.m. to 5:30 p.m.

CLOSED MONDAYS

Phone 765-4122

### All Stars split pair

Bethlehem's 13 year-old Babe Ruth All Stars won their first game in the District Championship Tournament July 2 at West Albany's St. Francis Field, only to lose their next game to the South Troy All Stars in a whopping 13-3 defeat.

The only bright spot for the Bethlehem team came early in the tournament with its 5 to 1 win over the Rensselaer All Stars. The offensive expertise of Paul Burke's bat was supplemented by the strong pitching of Steve Chung and the exceptional defense of a second baseman Andy Anderson and left-handed catcher Randy Gambelunghe. Anderson had a total of six putouts, while Gambelunghe stopped Rensselaer on the basepaths with accurate throws to second and third.

Although buried in its second game, the Bethlehem team is still alive and will meet the 1-1 Guilderland team in the third game of the tournament.

### Advanced lifesaving

Bethlehem will offer an American Red Cross advanced lifesaving course at the Elm Ave. Park beginning July 13. Classes will be held between 6 and 8 p.m. and registration is open to swimmers 15 and older. There is no fee for the program, but participants will be required to purchase instructional books. For registration information, call 439-4131.

*In Slingerlands, The Spotlight is sold at the New Scotland Pharmacy, Convenient Food Mart and The Toll Gate.*

### BUSINESS

### Popular optician leaving the area

Douglas Marone, an optician in the Capital District for 54 years and in the Tri-Village for 27 years, is heading south.

"We've been happy in Delmar, and we'll miss it," he said at his Alden Court residence amidst the jumble of a garage sale last month. The Marones were preparing to move to Vero Beach, Fla., this week.

"We have a daughter and grandchildren in Ft. Lauderdale who we want to spend some time with," he said. Marone, still fit and dapper at 70, also plans on practicing part-time while in Florida.

Marone began his practice with an uncle in Albany in 1927 and remained there for 15 years. During two of those years, he and his family lived in Delmar. He then moved his practice to Troy, and after 12 years moved back to Delmar and opened a private practice here because, he said, "We had enjoyed living here so much in '41-'42."

In 1961, Marone opened his Delaware Plaza office, "the first dispensary optician in any shopping center



Douglas Marone

in the area." Three years ago, he sold his practice to DiNapoli and DiNapoli and has been managing the office since.

The new manager of the store is Phil Machlowski.

Marone expects DiNapoli and DiNapoli to continue to do well at Delaware Plaza. "The service, convenience and integrity of the personnel can't be beat," he says. As for the optician's field: "The fashions in eyewear certainly have changed over the years," he says. "Today, glasses can often help people cosmetically; people enjoy wearing them now."

Marone has been very active in the Delmar community. He was a member of the Slingerlands Community Players, a troupe that has recently made a comeback. Marone acted in a number of plays, but felt that the best aspect of his involvement in the Players was meeting people socially.

Helen Duffy

**RUSTPROOF YOUR CAR TODAY**

*Rust Proofing*  *New Used*

**Joe Keller**  
SERVICE STATION  
GLENMONT 463-7712

**ZERO TURNING RADIUS MOWING**



**DIXON ZTR mowers save your time at every turn.**

DIXON ZTR mowers save time every place ordinary mowers waste it: trimming corners, around trees, at every turn! That's Mowbility.

Owners tell us that Zero™ Turning Radius saves up to half their mowing time, and sometimes even more. They tell neighbors how easy the mower operates, how they enjoy using it, what a great job it does—and most of all, it leaves them mower time for fun.

But don't take our word for it; try it yourself. A few quick turns to get the feel of its simple hand levers, and before you know it you'll turn yourself into a DIXON owner! Come in this week for your free test drive.




Abele Tractor and Equipment Co., Inc.  
Sales • Service  
Rentals  
72 Everett Rd.  
Albany, N.Y. 12205  
438-4444

**KAREN'S KORNER**  
417 Kenwood Ave., Delmar  
Behind Sporthaven Lanes

Now Accepting Spring & Summer Items  
Summer Hours: Tues., Wed. & Thurs., 10:00a.m.-4:00p.m.  
Saturday by Appointment

**CLOTHING • BOOTS**  
For more information 439-5050

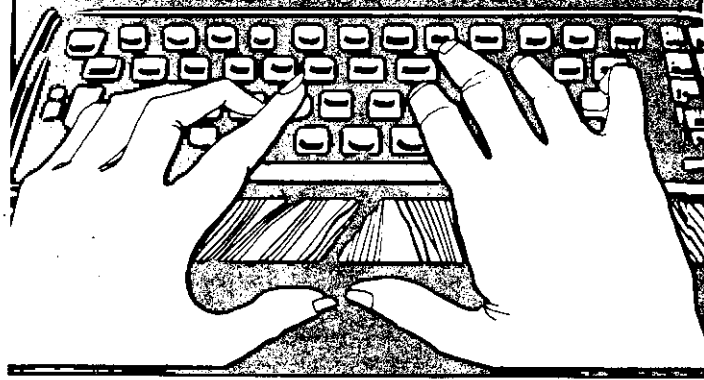
For Complete  
**Composition and  
Printing**

*Design & Layout  
Phototypesetting  
Offset Printing*

**Newsgraphics  
Printers**  
of Delmar, Inc.

call Gary Van Der Linden at  
439-4949

125 Adams St., Delmar, New York



**School failure is  
one history a child  
should not repeat.**

**SUMMER SCHOOL**

If your youngster has had reading or other learning problems, Summer is a good time to look into a Learning Center program.



**THE LEARNING CENTER**  
*A New Idea For Young People Ages 5 to 18*

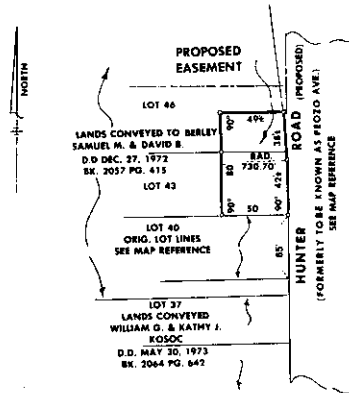
Individual Testing: with special tutoring programs in Reading, Phonics, Spelling, Speech, Language Development, Study Skills and Mathematics.

- Albany ..... 12 Colvin Ave. .... 459-8500
- Clifton Park ..... Rts. 9 and 146 ..... 371-7001

**LEGAL NOTICE**

**NOTICE BY PUBLICATION  
FOR ACQUISITION OF  
PROPERTY BY  
EMINENT DOMAIN**

PLEASE TAKE NOTICE that the Town of Bethlehem and Bethlehem Sewer District have petitioned the Supreme Court of the State of New York at a Special Term thereof held in and for the County of Albany, in the City of Albany, New York, in the Third Judicial District, on July 23, 1981 at 9:30 AM for the acquisition of the following real property by exercise of the power of eminent domain:



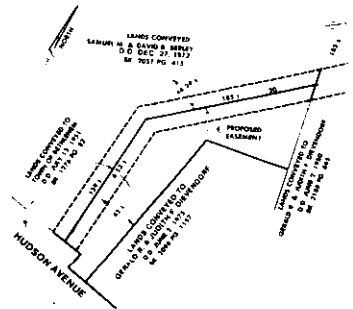
**EASEMENT NO. 81-F32**

Beginning at a point in the westerly line of a proposed town highway formerly to be known as Peozo Avenue (now Hunter Road) as the same is shown on a map entitled, "MAP OF P.H. DAVIS PLOT AT DELMAR, NEW YORK", dated August 22, 1923 and made by S. Paddock, C.E. and filed in the office of the Albany County Clerk September 27, 1926 in drawer number 52, book 52 as map number 1152, said point being (65) feet northerly measured along the westerly line of said proposed highway from its point of intersection with the division line between lands on the south conveyed to William G. and Kathy Kosoc by deed dated May 30, 1973 and recorded in the office of the Albany County Clerk in book of deeds 2064 page 642 and lands on the north conveyed to the parties of the first part by deed dated December 27, 1972 and recorded as aforesaid in book of deed 2057 page 415; thence running from said point of beginning westerly through lands of the parties of the first part with an interior angle of 90° (50) feet to a point; thence northerly continuing through said lands with an interior angle of 90° (80) feet to a point; thence easterly continuing through said lands with an interior angle of 90° (49) feet more or less to a point in the revised westerly line of said proposed Hunter Road; thence in a general southerly direction along the revised westerly line of the proposed Hunter Road with a curve to the right having a radius of (730.70) feet and an arc length of (38) feet more or less to a point in the first mentioned westerly line of the proposed Hunter Road; thence continuing

**LEGAL NOTICE**

southerly along said first mentioned westerly line of Hunter Road (42) feet more or less to the point of beginning.

The above described easement being more fully shown on a map entitled "MAP OF EASEMENT," TO BE GRANTED BY SAMUEL M. AND DAVID B. BERLEY TO BETHLEHEM SEWER DISTRICT AND TOWN OF BETHLEHEM," dated May 1, 1981 and made by Paul E. Hite, Licensed Land Surveyor.



**EASEMENT NO. 81-F33**

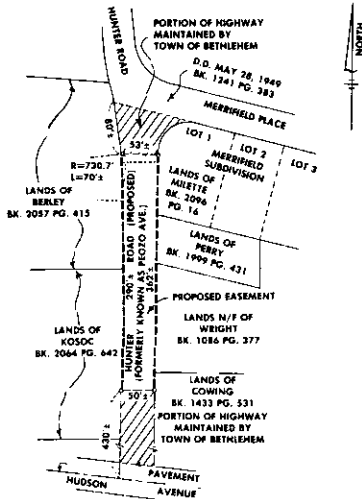
Intending to describe an easement having parallel and continuous sides throughout, being (30) feet in width, the centerline of which is more particularly described as follows:

Beginning at a point in the division line between lands on the south conveyed to Town of Bethlehem for highway purposes by deed dated July 12, 1951 and recorded in the office of the Albany County Clerk in book of deed 1276 page 83 and known as Hudson Avenue and lands on the north conveyed to the parties of the first part by deed dated December 27, 1972 and recorded as aforesaid in book of deed 2057 page 415 at its point of intersection with a line (45) feet more or less westerly of measured at right angles from and parallel with the westerly line of lands conveyed to Gerald R. and Judith F. Dievendorf by deed dated June 5, 1975 and recorded as aforesaid in book of deeds 2098 page 1157; thence running from said point of beginning northerly through lands of the parties of the first part with an angle to the left of 06°-53' more or less measured from said parallel line (159) feet more or less to a point; thence northeasterly continuing through said lands with a deflection angle to the right of 44°-29' more or less (185) feet more or less to a point in the westerly line of lands conveyed to the aforesaid Dievendorf by deed dated June 2, 1980 and recorded as aforesaid in book of deeds 2188 page 665.

The above described easement and centerline being more fully shown on a map entitled, "MAP OF EASEMENT, TO BE GRANTED BY SAMUEL M. AND DAVID B. BERLEY TO BETHLEHEM SEWER DISTRICT AND TOWN OF BETHLEHEM," dated May 1, 1981 and made by Paul E. Hite, Licensed Land Surveyor.

**LEGAL NOTICE**

**LEGAL NOTICE**



**EASEMENT NO. 81-F34**

Beginning at a point in the westerly line of a proposed town highway formerly to be known as Peozo Avenue (now Hunter Road) as the same is shown on a map entitled, "MAP OF P. H. DAVIS PLOT AT DELMAR, NEW YORK," dated August 22, 1923, made by S. Paddock, C.E. and filed in the office of the Albany County Clerk September 27, 1926 in drawer number 52, book 52 as map number 1152 at its point of intersection with the northerly line of a portion of said highway as now maintained by Town of Bethlehem, said point being (430) feet more or less northerly measured along the westerly line of said maintained portion of highway produced from its point of intersection with the centerline of pavement in a town highway known as Hudson Avenue; thence running from said point of beginning northerly along the westerly line of said proposed highway (290) feet more or less to a point; thence continuing northerly along the revised westerly line of said proposed highway with a curve to the left having a radius of (730.7) feet, an arc length of (70) feet more or less to the southerly line of a second portion of said highway as now maintained by Town of Bethlehem, said point being (80) feet more or less southerly measured along the revised westerly line of said highway from the southerly line of lands conveyed to Town of Bethlehem for highway purposes by deed dated May 28, 1949 and recorded in the office of the Albany County Clerk in book of deeds 1241 page 383 and known as Merrifield Place and Hunter Road; thence easterly along the southerly line of said maintained portion of highway (53) feet more or less to a point in the easterly line of said proposed highway as the same is shown on a map entitled, "MAP OF MERRIFIELD, PROPERTY OF RUSSELL F. WRIGHT," dated June 18, 1948 and made by Edward W. Boutelle and Son, Civil Engineers and Surveyors, filed in the office of the Albany County Clerk January 20, 1949; thence southerly along the easterly line of said proposed highway parallel with the first

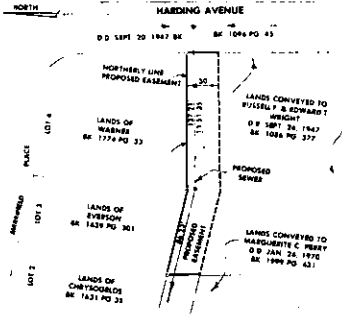
mentioned westerly line (362) feet more or less to the northerly line of the first mentioned portion of said highway as maintained by Town of Bethlehem; thence westerly along said line (50) feet more or less to the point of beginning.

The above described easement being more fully shown on a map entitled, "MAP OF EASEMENT, TO BE GRANTED TO BETHLEHEM SEWER DISTRICT AND TOWN OF BETHLEHEM," dated May 1, 1981 and made by Paul E. Hite, Licensed Land Surveyor.

**JOSHUA J. EFFRON**  
Special Counsel  
Attorney for Petitioner—Condemnor  
Office & P.O. Address  
11 North Pearl Street  
Albany, N.Y. 12207  
(518) 465-1403 (July 9)

**NOTICE BY PUBLICATION FOR ACQUISITION OF PROPERTY BY EMINENT DOMAIN**

PLEASE TAKE NOTICE that the Town of Bethlehem and Bethlehem Sewer District has petitioned the Supreme Court of the State of New York at a Special Term thereof held in and for the County of Albany, in the City of Albany, New York, in the Third Judicial District, on July 23, 1981 at 9:30 AM for the acquisition of the following real property by exercise of the power of eminent domain:



**EASEMENT NO. 81-F35**

Intending to describe an easement having parallel and continuous sides throughout and being (30) feet in width, the northerly line of which is more particularly described as follows:

Beginning at a point in the division line between lands on the north being all of lots number (1) through (4) Merrifield Place as the same are shown on a map entitled, "MAP OF 'MERRIFIELD,' PROPERTY OF RUSSELL F. WRIGHT," dated June 18, 1948 and made by Edward W. Boutelle and Son, Civil Engineers and Surveyors, filed in the office of the Albany County Clerk January 20, 1949 and lands on the south of the parties of the first part, said point being the northeast corner of lands conveyed to Marguerite C. Perry by deed dated January 24, 1970 and recorded in the office of the Albany County Clerk in book of deed 1999 page 431; thence running from said point of beginning easterly along said division line (86.23) feet to an angle

**EXTERIOR PAINT SALE**



**QUALITY PLUS 25% OFF**

**SALE ENDS SAT. 7/11**



**Mon., Tues., Wed., Fri., 8-5:30  
Thurs., 8-8 Sat. 8-5**

**340 Delaware Ave.  
Delmar, 439-9385**

**LOW RENTAL RATES**

**ANY KIND OF CAR YOU WANT**

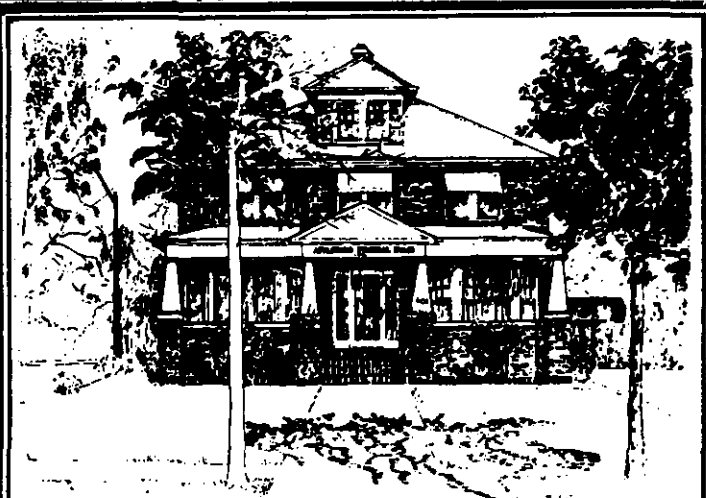


**WE HONOR MOST MAJOR CREDIT CARDS**



**As Low as \$13 per day**

**MARSHALL'S GARAGE INC.  
Rt. 9W RAVENA 756-6161**



**Applebee Funeral Home Inc.**

**—Serving the Community for three Generations—  
439-2715**

**403 Kenwood Avenue  
Delmar, New York**

**LEGAL NOTICE**

point therein; thence continuing easterly along said division line with a deflection angle to the left of 13°-51'-35" (137.21) feet to its point of intersection with the westerly line of a town highway known as Harding Avenue, lands for said highway conveyed to Town of Bethlehem by deed dated September 20, 1947 and recorded in the office of the Albany County Clerk in book of deed 1096 page 45.

The above described easement and northerly line being more fully shown on a map entitled "MAP OF EASEMENT TO BE GRANTED TO BETHLEHEM SEWER DISTRICT AND TOWN OF BETHLEHEM," dated May 1, 1981 and made by Paul E. Hite, Licensed Land Surveyor.

**JOSHUA J. EFFRON**  
Special Counsel  
Attorney for Petitioner-Condemnor  
Office & P.O. Address:  
11 North Pearl Street  
Albany, N.Y. 12207  
(518) 465-1403

See map entitled, "MAP OF 'MERRIFIELD,' PROPERTY OF RUSSELL F. WRIGHT," dated June 18, 1948, made by Edward W. Boutelle and Son, Civil Engineers and Surveyors, filed in the office of the Albany County Clerk January 20, 1949. (July 9)

**Violins Repaired**  
**Bows Rehaired**  
**Tennis Rackets**  
**Restrung & Regripped**  
**C.M. LACY**  
3 Becker Terrace • 439-9739

**Delaware Plaza**  
**DELMAR, NY**  
*Little Folks*  
**Open**  
**Sundays**  
**12:00 Noon**  
**to 5:00 p.m.**

**CLASSIFIED AD POLICY**  
Classified advertisements in the Spotlight must be paid for when submitted. We must enforce this strictly. Our rates are too small to permit invoicing and bookkeeping for classifieds. Please do not ask us to make exceptions. Copy and remittance must reach us before 4:30 p.m. Friday for publication in the following Thursday issue.

**CLASSIFIED ADVERTISING RATES**  
Minimum \$3.00 for 10 words  
25 cents each additional word.  
**Call 459-4949**  
or write or stop in  
at our convenient office  
**125 Adams St., Delmar**  
Why don't YOU subscribe to  
**THE SPOTLIGHT?**

**LEGAL NOTICE**

**NOTICE OF FORMATION OF LIMITED PARTNERSHIP**

NOTICE IS HEREBY GIVEN, pursuant to Article 8 of the Partnership Law of the State of New York, that Allied World Resources, Inc., 5 Loudon Lane North, Loudonville, County of Albany, State of New York, as general partner, and National Commerce Exchange, Inc., of 6501 Loisdale Court, City of Springfield, State of Virginia, as limited partner, have formed a limited partnership for the maintenance of a clearing house for reciprocal trade and organized barter, which is to have its principal place of business in the County of Albany, State of New York. The name of the limited partnership is National Commerce Exchange of the North Atlantic.

The partnership is to exist for an indefinite term.

The amount of cash and a description of, and the agreed value of, the other property contributed by each limited partner is \$2,000.00

The additional contributions agreed to be made by each limited partner and the time at which or the event on the happening of which they shall be made are as follows:

If any Partner shall, in excess of his agreed contribution to the capital of the Partnership, advance any monies to the Partnership, the amount of any such advance shall not be an increase of his capital contribution or entitle him to any increase in his share of the distributions of the Partnership, but the amount of any such advance shall be an obligation of the Partnership to such Partner and, unless otherwise provided and agreed, shall be repaid to him with interest at the maximum legal rate, except that interest shall not be paid on money advanced or expended prior to the formation of the Partnership.

The time when the contribution of each limited partner to be returned has not been agreed to.

The share of the profits or the other compensation by way of income which each limited partner shall receive by reason of his contribution is as follows: National Commerce Exchange, Inc. shall receive ten percent (10%) of the profits of said partnership.

The right of a limited partner to

**REAL ESTATE**  
  
**DIRECTORY**  
Local  
ERA  
**JOHN J. HEALY REALTORS**  
361 Delaware Ave.  
439-7615  
**PICOTTE REALTY INC.**  
205 Delaware Ave.  
439-4943

**LEGAL NOTICE**

substitute an assignee as contributor in his place, and the terms and conditions of the substitution, are as follows:

The Limited Partner shall have the right to assign, encumber or otherwise dispose of its interest in the Partnership without the consent of the General Partner(s); provided, however, that the General Partner (s) shall have the absolute right and option to purchase the share of the Limited Partner at any time and from time to time as follows:

(1) During the first twelve month immediately subsequent to the execution of this Agreement, the value of the Limited Partnership share shall be equal to the value of the Limited Partner's original contribution.

(2) During subsequent twelve month periods the value of the Limited Partnership share shall be the value of the Limited Partner's original contribution or 10% of the net worth of the Partnership, which ever is greater.

(3) The purchase price shall be paid entirely in cash or by certified check.

(4) In the case of the assignment of a Limited Partner's Partnership interest at any time other than the end of the accounting period of the Partnership, the distribution shares of the various items of Partnership income, in respect of the Partnership interest so assigned, as computed for Federal Income Tax purposes, shall be divided between the assignor and assignee in the ratio of the number of days in the taxable year before and after the assignment.

The right of the partners to admit additional limited partners is as follows: The General Partner(s) shall not add additional Limited Partners to the Partnership without the express written consent of the Limited Partner.

The right of the remaining general partner or partners to continue the business on the death, retirement, or insanity of a general partner is as follows:

In the event of retirement, death or adjudication of insanity, incompetency or bankruptcy of a General Partner, any remaining General Partner or, if such remaining General Partner declines to do so, the Limited Partner shall have the right, but not the obligation, to elect to form a new Partnership to continue without interruption the business of the Partnership. In the event that such election is exercised by any remaining General Partner, any remaining General Partner shall promptly give notice to the Limited Partner stating in substance that the remaining General Partner has elected to continue the business of the Partnership. In the event that such election is exercised by the Limited Partner, then the Limited Partner shall, as speedily as possible, proceed to select an individual who shall agree to be the Substitute General Partner or Substitute General partners, as the case may be, and shall make proper arrangement and provision for the liabilities of the Partnership. Upon the election of the remaining

**LEGAL NOTICE**

General Partner to continue the Partnership business, or upon the selection of the Substitute General Partner or Substitute General Partners, as the case may be, written notice of intent to purchase their interest in the Partnership of the withdrawing General Partner shall be served by any remaining General Partner or the Substitute General Partner, or each of the Substitute General Partners, as the case may be, on the withdrawing General Partner, or on the executor, administrator, or personal representative of the withdrawing General Partner in the case of the death or adjudication of insanity, incompetency, or bankruptcy of the withdrawing General Partner.

In witness whereof, the undersigned have executed this certificate this 12 day of April, 1981.

**GENERAL PARTNERS**

Allied World Resources, Inc.  
by: M.J. Marshall, President  
**LIMITED PARTNER**

National Commerce Exchange, Inc.  
by: Robert G. Munn, Secy./Treas.

(July 9)

**NOTICE OF PUBLIC HEARING ON PROPOSED AMENDMENTS TO THE TRAFFIC ORDINANCE OF THE TOWN OF BETHLEHEM**

NOTICE IS HEREBY GIVEN that a public hearing will be held by the Town Board of the Town of Bethlehem at the Town Hall, 445 Delaware Avenue, Delmar, New York, on the 22nd day of July, 1981 at 7:30 P.M. to consider amending the Traffic Ordinance of the Town of Bethlehem in the following respects:

1. By amending Article I, STOP INTERSECTIONS by adding a new paragraph (tt) to read as follows:

(tt) Palmer Avenue is hereby designated as a through highway between its intersection with Winne Road and its intersection with Fernbank Avenue and a stop sign shall be erected at the following entrance thereto:

1. Fernbank Avenue from both directions.

and by adding a new paragraph (uu) to read as follows:

(uu) Wisconsin Avenue is hereby designated as a through highway between its intersection with Westchester Drive North and its intersection with Fernbank Avenue and a stop sign shall be erected at the following entrance thereto:

All interested persons and citizens will have an opportunity to be heard at the said meeting.

**BY ORDER OF THE TOWN BOARD TOWN OF BETHLEHEM**

Marion T. Camp

Town Clerk

Dated: June 24, 1981:

(July 9)

# CLASSIFIEDS

Minimum \$3.00 for 10 words, 25 cents each additional word, payable in advance before 4 p.m. Friday for publication the following Thursday. Submit in person or by mail with check or money order to 125 Adams St., Delmar, NY 12054

439-4949

439-4949

## ANTIQUES

### ANTIQUES

Over 40 yrs.—3rd. Generation  
Bought & Sold

### APPRAISALS

Update Your  
Fire & Theft Policy  
"Before-A-Loss"

Jeanne Van Hoesen  
Jan F. Van Hoesen

439-1021

67 Adams Place, Del., N.Y.

*The Bird Cage*

Victoria A. Seymour 439-5309  
Nancy T. Steele 439-5189

Wednesday thru Sunday  
12:00-5:00 p.m.  
or by appointment

1926 New Scotland Rd.  
Slingerlands, NY 12159

Period Furniture Country Pine  
Shaker Furniture Lighting

### ANTIQUES at the TOLLGATE

1569 New Scotland Rd.  
Slingerlands  
439-6671

Hours:  
Mon.-Sat. 11:00-5:30 p.m.  
Sun. 1:00-5:00 p.m.

We Buy and Sell  
Quality Antiques


Cut & Pressed Glass Primitives  
Victoriana Quilts

Sue Zick Interiors 439-3296

### WANTED

Old & New Tools

Call

 Pete Williams  
(518)462-6882

In Glenmont, The Spotlight is sold at the 5-A Superette, Heath's Dairy and Van Allen Farms.

## ANTIQUES

WE BUY WE SELL  
ANTIQUES  
Good Used Furniture  
FAIR PRICES PAID  
BILL 'N' LOU'S  
ANTIQUES

439-2507 • 439-1388  
Closed Sunday

### ANTIQU EXCHANGE

Antiques & Collectibles

Bought & Sold

439-7715

154 Delaware Ave.  
Behind Denby's



*The Unicorn*  
439-0002

2100 New Scotland Rd.  
Route 85, New Scotland

### ANTIQUES

Buy • Sell

FURNITURE  
OF YESTERYEAR

Fri. & Sun. 12-5  
Sat. 10-5

### Delmar Antiques

We buy and sell

Furniture, rugs, china,  
mahogany clocks, etc.

Buying: wicker in any condition.  
Buying: sterling, class rings,  
gold, jewelry, and coins.

439-8586/482-3892

Mon.-Fri. 12-5

Sat. 10-5 or by appt.

449 Delaware  
Ave.

## APPLIANCE SERVICE

### Appliances Serviced

Reasonable Rates  
35 Years Experience

Tri-Village  
Appliance Service  
439-9582

## AUTO REPAIR

tacs

### AUTO COLLISION SPECIALISTS

Quality Work at Fair Prices

"Try us-You won't regret it!"

Rt. 9W 462-3977  
Glenmont or 439-9175  
Open 6 Days

### AUTO BODY SHOP

Hilltowns Sales  
& Service  
COMPLETE BODY &  
FENDER REPAIRS

HOWARD HURLEY  
4222 Elm Dr., East Berne

(off Pinnacle Rd. Helderberg Lake area)  
CALL 872-1805  
(Satisfaction Guaranteed)

## AUTOMOTIVE FOR SALE

\$\$\$\$\$\$\$  
VEHICLE  
BARGAINS  
\$\$\$\$\$\$\$  
JEEPS, CARS,  
TRUCKS

available thru govern-  
ment agencies in your  
area. Many sell for un-  
der \$200. CALL 602-  
941-8014, Ext. 6121 for  
information on how to  
purchase.

## AUTOMOTIVE FOR SALE

JEEPS, CARS, PICKUPS from  
\$35. Available at local Gov't auc-  
tions. For Directory, call Surplus  
Data Center, (415) 864-0537 4T716

## BATHROOMS

BATHROOM NEED WORK? Dirty  
joints? Loose tile? Leaks when  
showering? Call Fred, 462-1256.

## BICYCLES

BICYCLES  
LAWNMOWERS  
SALES & SERVICE  
BENNETT'S  
561 Delaware Ave., Delmar

## BLACKTOP

DRIVEWAYS SEALED by exper-  
ienced students. Cheap. Call  
439-7235, Phillip Giltner or Peter  
Propp, 439-6379, for information.  
3T723

"Our Prices Are Reasonable"  
LIUZZI BROS.  
Blacktop Specialists  
Residential. Commercial  
Industrial — Fully Insured  
482-8954  
Also Gilsonite or  
Jennite. J-16 Sealer  
SATISFIED CUSTOMERS  
ARE OUR BEST  
RECOMMENDATIONS

### Protect your investment DRIVEWAY SEALING

Professionally done using  
modern equipment and

LATEX-ITE (The tough one)

no fuss, no muss, call us

Asphalt Sealer  
Service  
271-6065

or  
439-9587

**BLACKTOP****DEPENDABLE DRIVEWAY SEALING & PATCHING**

Quality Work Very Reasonable Rates  
8 Years Experience  
Call Dan 449-8205

**CARPENTRY**

**CARPENTRY**, remodeling and repair. Call Rick, 438-2056, or 438-5303. 4T730

**CONTRACTORS****TOPSOIL & EXCAVATING**

Bulldozing & Backhoe  
*no job too small!*

**A.P. Genovesi**  
439-4654

If there's *EARTH* to be moved—we'll do it

**WDL BULLDOZING**

Backhoeing  
Landscapedozing

- Site Cleaning
- Parking Areas
- Driveways
- Grading & Finishing

Fill • Topsoil • Gravel • Stone



**439-7595** evenings  
Commercial / Residential

**FIREWOOD**

**GREENWOOD**, 3 full cord truck load, \$180 plus 2% tax. Ask about our cash discount. John B. Geurtze, Jr. 872-2078. TF

**FIREWOOD DELIVERED**

Hardwood • \$90/full cord  
Cut and Split — 4x4x8

Green Wood & Unsplit Wood.

Also available

Randy Bates • after 5, 797-3215

**FURN. REPAIR/REFIN.**

Scratches • Touch-ups • Burn-ins • White Rings

*Fine furniture repair*  
HOUSE CALLS  
477-5022  
*Bernard Levine*

Closed Sat.

References

**Heritage Woodwork**

Specializing in Antiques and Fine Woodworking

**FURNITURE**

Restored • Repaired • Refinished  
Custom Furniture • Designed/Built  
Bob Puffer — 439-8165

**FURN. REPAIR/REFIN.**

**UPHOLSTERY REPAIRS** at home. Loose buttons, springs, cushions refilled, etc. Call 439-4130. TF

**ANTIQUIE OR MODERN FURNITURE REPAIR SERVICE**

Repairing • Refinishing

**ROBERT ROTUNDO**

154-B Delaware Ave., Elsmore  
Phone 439-7700

**GARAGE SALE**

**31 GARDNER TERR.**, July 9 and 10. Moving. Dishes, furniture, 3 bicycles, sleds, wheelbarrow, chain saw, ice cream chair, milk can, butter churn, mirror, tools, golf clubs, filing cabinet, coins, pine chest, oil, ping pong table, saw, sleighbells (old), primitives, small collector's items.

**COLONIAL ACRES**, 49 W. Bayberry Rd., July 11, 9-4. Antiques, collectibles, household goods and more.

**BROOKMAN AVE.** Multi-family, gas stove, kitchen table & chairs, clothing and misc. July 11, 10-4.

**FAMILY MOVING** soon, everything must go. Large assortment of useful things. Furniture, toys, small appliances, bike, freezer, refrigerator, beds, piano, stove and refrigerator. July 11 & 12, 9-1 p.m., 26 Sylvan Ave., Delmar.

**CLARKSVILLE**: 998 Delaware Tpk. July 11, 9:30-4:30. Glassware, clothing, antiques, plants, misc.

**NEIGHBORHOOD**: Sat. & Sun., July 11-12, 9-5. 1 mile, Filtration Plant Rd., P.O. Box 276, 277, 279, 282.

**NEW APPLIANCES MOVED.** Old appliances removed. Garage Sale items. 439-7340. 4T79

**GLASS****DAVES GLASS COMPANY**

154B Delaware Ave.  
(behind Denby's)  
mirrors • tabletops  
auto glass • stained  
glass • supplies •  
storms & screens  
439-7142

Broken Window?  
Torn Screen?  
SAVE 10% on  
REPAIRS WITH  
THIS COUPON

Expires 7/18/81

Roger Smith's

**DECORATIVE PRODUCTS CO.**  
340 Delaware Ave., 439-9385

**HELP WANTED**

**ADULT** for child care and light housework, 3-6, M-F, begin Sept. References. 439-0570 before 9:30 a.m., after 5 p.m.

**BUS DRIVERS**, reg. and subs. We will train for license. Contact Robert Murphy, Voorheesville School, 765-2381. 3T723

**RECEPTIONIST WANTED** for busy doctor's office in Delmar, 3 or 4 afternoons a week. Send resume to Dept. "A", c/o Spotlight, Box 152, Delmar, N.Y. 12054.

**WARM, LOVING** person needed to care for toddlers in day care setting. For information, call 463-8091.

**DIETARY WORKERS**, to start July or August. About 20 hours per week. Prefer high school juniors. Good Samaritan Home, 439-8116.

**TEACHER**, p/t cooperative community nursery school. 167 Fairfield Ct., Voorheesville, 12186. Resume.

**AN OPPORTUNITY** for the right person—outside sales with a highly marketable service and product line. Start with us on the ground floor and go up. Send resume to BAI, 378 Delaware Ave., Albany, N.Y. 00925 3T716

**MAINTENANCE MAN** needed. Light labor, 5½ days per week, 436-0838. 2T79

**INFORMATION** on Alaskan and overseas employment. Excellent income. Call: 312-741-9784 Ext. 1062. 4T716

*Spotlight classifieds work!*

**HOME IMPROVEMENT**

**Exterior Remodeling**  
Roofing • Repair  
Painting • Siding  
FREE ESTIMATES  
**434-8993**

Evenings and weekend calls welcome.  
**434-8993**

Call  
**STEVE HOTALING**

*THE HANDY MAN*

Home Repairs  
Remodeling  
Interior-Exterior  
Painting  
Aluminum Doors  
and Windows

**439-9026**

**HOUSE WASHING**

**EXTERIOR HOUSE WASHING.** Clapboard, alum. siding, painting prep. Reasonable. 439-1715. TF

**INTERIOR DECORATING****DELMAR DECORATORS SAVE UP TO 20%**

Slipcovers, Draperies,  
Table Pads, Bedspreads,  
Wood & Cloth Shades  
Delmar • 439-4130



Beautiful  
**WINDOWS**  
by Barbara  
Draperies,  
Bedspreads  
your fabric or mine  
**Estimates**  
**872-0897**

**JEWELRY**

**EXPERT WATCH, CLOCK AND JEWELRY REPAIRS.** Jewelry designed to order. Estate appraisals. Engraving. Your trusted jeweler, **LE-WANDA JEWELERS, INC.** Delaware Plaza Shopping Center, 439-9665. 25 years of professional service. TF

**LAMP REPAIR****LAMP REPAIRS**

New wire, plug and 3-way socket on any standard

Table Lamp \$5.75 Floor Lamp \$6.75

**LAMPHOUSE**

Behind Delmar's P.O.  
439-7258 • M-S 10-5:30

**LAWN & GARDEN****Trees & Things, Inc.**

- Landscape Design
  - Construction
  - Maintenance
- 768-2354 783-6527**

**Wm. P. McKeough, Inc.**

Landscaping Contractors  
Est. 1960

New/Old Lawns  
Trees & Shrubs  
Pruning

**COMPLETE PROFESSIONAL SERVICE**

439-4665

**LAWN & GARDEN**

\*\*\*\*\*  
**Blacktopping**  
 • with Coal Tar Sealer & Filler  
 • with Latex  
**Lawn/Hedge Care**  
 BCHS students need summer work  
 465-8137 For Estimates 439-1380  
 Neil Call Brian

**TOPSOIL**  
**CEDAR HILL TRUCKING**  
 Cedar Hill, Selkirk  
 767-9608 767-2862

**HORTICULTURE UNLIMITED**

- Spring Cleanup
- Natural Landscaping
- Nursery Stock
- Flowers
- Lawn Mowing
- Guaranteed Planting

"It's Only Natural"  
**BRIAN HERRINGTON**  
 482-2678

**VAN WORMER ENTERPRISES**

Lawn Mowing Maintenance  
 Spring Clean up  
 Damaged Lawns Repaired  
 Season Contracts Available  
 Fertilizing—Seeding  
 Emergency Tree Removal

**439-4683**

**LOST & FOUND**

**FOUND:** Near Middle School.  
 I.D. bracelet. 439-2736.

**MASONRY**

**MASONRY CARPENTRY**  
 NEW•REPAIR

Chimneys  
 Sidewalks  
 Patios  
 Retaining Walls  
 Foundations



**797-3436**

**MASONRY**

**ALL TYPES MASONRY**  
 NEW — REPAIRS  
 26 Years Experience  
 Chimneys, Fireplaces, Stoops, Walks  
 Foundation Repairs, Waterproofing  
 PROFESSIONAL WORK WITH INTEGRITY  
 Serving this community for years  
 with Pride—Satisfaction Guaranteed  
**F. JOSEPH GUIDARA**  
 439-1763, evenings

**MISC. FOR SALE**

**FREEZER**, 20 cu. ft. Kelvinator; Kenmore refrigerator. 439-6256.  
**PIANO**, upright, refinished, ex. condition. \$275. 439-6256.

**PASSPORT AND ID PHOTOS**. Ready in minutes. Call L. Spelich, phone 439-5390. TF

**ZENITH** console color TV/antenna, boy's bike, girl's bike, Porta Potti for RV, metal GI trunk, croquet set, baby's plastic bathtub, table & wall lamps, dishes, set of 8, artist's set in wooden case. 439-6391 after 7:30 p.m.  
**21" ZENITH** cabinet television. Good condition. 439-4506.

**HOOKE RUG**, 8 1/2 x 12, blue-grey border w/ center oval, rose-green flowers. 439-1384 eve.

**BIKE**, girl's 20". \$25, 765-4326.

**SNOWBLOWER**, 5 hp, self-propelled \$150; child's x-country ski set, \$40; snowshoes, \$35. 439-1494.

**GE WASHER** and dryer, \$100 each; GE refrig., copper tone, \$150. 439-1494.

**BICYCLE**, girl's Ross, excellent, \$35; swag light, helmets, fireplace screen set. 439-1494.

**DEHUMIDIFIER**, used very little, Edison, \$75. 439-9212.

**AM-FM STEREO** cassette recorder, two 21" speakers, excellent condition, \$185. 439-4471.

**PROFESSIONAL** pool table \$800; Navy anchor, 50lb.; dock cleets 2 10"; electric oven broiler; full set Stangel pottery dishes. 477-7992.

**Bermuda Bags**  
**BEST SELECTION**  
 No store has a greater selection of Bermuda Bags and Covers than  
**CASUAL SET**  
 of Stuyvesant Plaza

**MUSIC**

**TRUMPET LESSONS**, Crane School graduate accepting new students. 765-4900 or 765-3155, Mike Perry. 4T730

**MUSIC**

**PIANO LESSONS**. All ages, levels, adult beginners. MA degree. Sandra Zarr, 767-9728. (Glenmont). 29T1231

**MOVING**

**MINNOW MOVERS**  
 Call us for all your  
 Light Trucking Needs  
 No job too small  
 449-8205

**NURSES**

**TRI-VILLAGE PROFESSIONAL NURSES** available for home care. 439-7135, 767-9137. 3T618

**PAINTING & PAPERHANGING**

**THE HAPPY PAINTERS**. Interior/-exterior. Insured. Delmar references. Al Bradt, 439-9729; John Toohey, 765-2737. 6T79

**R.E.O. PAINTING**  
 Exterior/Interior  
 Free Estimates  
 Insured/Guaranteed  
 Richard Oldreik 439-2907  
 Jack Dalton 439-3458

"Have Brush, Will Travel..."  
**Interior & Exterior Painting**  
 by someone who enjoys his work  
 Full Ins. • Free Estimates  
 Using Benjamin Moore Paints  
 Norbert Monville (518) 482-5940  
 Twenty-Four Fordham Court  
 Albany, New York 12209

**S & M PAINTING**  
 Interior & Exterior  
**Wallpapering — Painting**  
 FREE ESTIMATES  
 INSURED • WORK GUARANTEED  
 439-5592 after 5 p.m.



**Painters**

**Professional Results**  
 at a  
 Fraction of the Cost

Now Scheduling for  
 Summer 1981  
 Free Estimates — Insured  
 Call  
 439-9755 or 439-5503

*In Voorheesville, The Spotlight* is sold at the Grand Union and Voorheesville Pharmacy.

**PAINTING & PAPERHANGING**

**D.L. CHASE**  
**Painting Contractor**  
**Residential Specialists**



Complete home repair and maintenance services  
**768-2069**

**VOGEL Painting Contractor**



Free Estimates

- RESIDENTIAL SPECIALIST
- COMMERCIAL SPRAYING
- WALLPAPER APPLIED
- DRY WALL TAPING

**Interior — Exterior**  
 INSURED  
 439-7922 439-5736

**L.M. CURTIN**  
**Painting Contractor**

Interior/Exterior Insured  
 FREE Estimates  
 Reasonable Rates

**YOUR SATISFACTION IS MY REPUTATION**  
 439-5897

**PETS**

**FREE COLLIE**. Purebred spayed female, 6 yrs. Needs loving home, room to run. Owner moving. 439-7136 eves.



**CAT HAVEN**

FOR CATS ONLY Reservations Required  
 — Individual Care in Private Home —  
 ETHEL-FAY 785-2715

**PLUMBING & HEATING**

**Home Plumbing Repair Work**

**Bethlehem Area**

Call JIM for all your plumbing problems  
 Free Estimates • Reasonable Rates  
**439-2108**

**PLUMBING & HEATING**



**LOOK**

for the three R's  
in Plumbing & Heating  
Repairs & Installations

- Responsible
- Reliable
- Reasonable

If that's what you want  
in a Plumber CALL

**Bob McDonald**

**756-2738**

Days or Evenings

**ROOFING**

**VANCANS ROOFING.** New roofs,  
repairs and slate work. Free  
estimates. 439-3541. TF

**COLLEGE ROOFERS.** New roofs,  
repairs and slate work. Free  
estimates. 439-5630.

Can't decide  
who to call  
to do your  
ROOF?



Why not call the company  
where superior workmanship  
still means something?

**VANGUARD  
ROOFING CO.**

Free Estimates—Fully Insured

Call **JAMES S. STAATS**

**767-2712**

**ROOFING  
SIDING**

Residential — Commercial  
Ice Sealed Eaves

Gable - Built-up - Bonded  
Aluminum Siding - Remodeling  
Free Estimates - Fully Insured

**JAMES**

HOME IMPROVEMENT CO.

— Since 1943 —

**439-3000**

421 Wellington Rd., Delmar, NY

**ROOFING**

For a FREE Estimate on



**Cyrus Shelhamer Roofing**

- SNOW SLIDES
- GUTTERS
- TRAILER ROOFS

INSURED  
REFERENCES  
**756-9386**

**SIDING**

**Dick Domermuth  
and Sons**  
SIDING & TRIM



Our Only Business  
Free Estimates

**768-2429**

**SITUATION WANTED**

**PAINTING,** mowing, cleaning ser-  
vice, general handywork, reason-  
able rates, assured work. 439-  
4212. 8TB13

**SOLAR ENERGY**



- Solar energy evaluations
- Solar domestic hot water
- Solar space heat
- Solar greenhouses
- Attractive and custom  
designed applications

"Solar turns sense into savings"  
**768-2169**

**SPECIAL SERVICES**

**NORMANSKILL SEPTIC TANK  
Cleaners.** Systems installed,  
electric sewer roofer service.  
767-9287 TF

Torn Screen?  
Broken Window?  
SAVE 10% ON  
REPAIRS WITH  
THIS COUPON

Expires 7/18/81

Roger Smith's

DECORATIVE PRODUCTS CO.  
340 Delaware Ave. 439-9385

**SPECIAL SERVICES**

**DELMAR SANITARY CLEANERS**  
serving the Tri-Village area more  
than 20 years. 768-2904. TF

**John M. Vadney**

**UNDERGROUND PLUMBING**

Septic Tanks Cleaned & Installed  
SEWERS—WATER SERVICES  
Drain Fields Installed & Repaired  
—SEWER ROOTER SERVICE—  
All Types Backhoe Work

**439-2645**

**TABLE PADS**

**TABLE PADS,** blinds, window  
shades, made to order. Free  
estimates. Call **DELMAR DEC-  
ORATORS,** 439-4130. TF

**TRAVEL**

**MYERS TRAVEL**

Delmar's only airline approved  
travel agent

210 DELAWARE AVE.  
439-7671

37 N. PEARL ST.  
434-4131

**TREE SERVICE**

**HERM'S TREE SERVICE,** Call  
IV2-5231 tf

**REAGAN'S TREE SERVICE**  
EMERGENCY SERVICE  
ANY DAY ANY TIME

COMPLETE TREE SERVICE  
STUMP REMOVAL

- Trimming • Cabling • Removing

FULLY INSURED • FREE ESTIMATES  
439-5052 Delmar

**CONCORD  
TREE  
SERVICE**



Spraying for insect  
& disease control

- REMOVAL
- PRUNING
- CABLING

• 24 Hr. Emergency Service  
Free Estimates - Fully Insured  
**439-7365**

(Residential • Commercial • Industrial)

**TRUCKING**

**FRANK MARKUS  
TRUCKING**

- Topsoil
- Yellow Sand
- Crushed Stone



Orchard St.,  
Delmar **439-2059**

**WANTED**

**GOOD USED ITEMS** for a flea  
market and auction, New Salem  
Reformed Church. For pick-up  
call Pete 439-6179 or Gene 765-  
2279. 13T924

**COLLECTOR** seeking old Lionel,  
Am. Flyer, Ives, Maerklin trains.  
Call 463-4988. TF

**I BUY** old cameras, toys, radios,  
dolls, postcards, photos, trains,  
jugs, dishware, and most every-  
thing old. Eve. 439-5994. 4T79

**WANTED**

We pay cash for

**USED APPLIANCES**

Any condition • Free pick-ups

**439-9582 / 355-1313**

**REAL ESTATE FOR RENT**

**OFFICE** for rent, 23x14, 257 Del-  
aware Ave., Elsmere. 439-2613.  
TF

**OFFICE/RETAIL SPACE** for rent,  
up to 1,000 sq. ft. Spotlight Build-  
ing (formerly Town of Bethlehem  
Coffee House), Delmar. 439-4949.

**ROOM** for rent, business man  
preferred. Kitchen privileges.  
439-4662. 2T176

**OFFICE/RENTAL SPACE,** ap-  
proximately 900 sq. ft., next to  
A&P on Delaware Ave. 439-9212.  
2T716

**OFFICE SPACE** available in heart  
of Delmar. Up to 4,000 sq. ft.  
Will subdivide and renovate to  
suit tenant. Call 439-4432 or  
439-9631. TF

**HOLIDAY, FLA.** Furnished house.  
Adults \$400/mo. plus utilities.  
Available Sept. 1. 439-4891 after 6.

**QUIET,** secluded 1-bedroom cot-  
tage, Thacher Park vicinity. Avail.  
thru Oct.; \$25 per day. Mature  
adults only. 767-3450.

**SOUTHERN VERMONT** sum-  
mer/fall: Rent new Okemo Moun-  
tain trailside condominium, sleeps  
six. Deck, pool, tennis. Nearby  
golf, lakes, shops. Weekly/week-  
ends, starting Aug. 28. Also avail-  
able entire ski season. 439-2550.

**MODERN** 3-bedroom house in  
Rensselaerville, 1 1/2 baths, w/w  
carpet, laundry room and acreage,  
ref. req. 439-0690.

**REAL ESTATE FOR SALE**

**FLORIDA - LARGO.** Taxes under  
\$300. 2 BRs, 2 Baths, DR, LR, Kit.,  
Florida Rm., Gar., Well, All Util.  
\$59,900. 439-3331. 4T79

**A 4 BR,** 2 bath home, plus store,  
28 x 60. Main St., Clarksville,  
\$69,000. 768-2131.

# Vox Pop

*Vox Pop is open to all readers for letters in good taste on matters of public interest. Letters longer than 300 words are subject to abridgement, and all letters should be double-spaced and typed if possible. Letters must be signed; names will be withheld on request. Deadline is the Friday before publication.*

yards. I would think you would want to know where your child is.

Don't just take Fernbank Ave. There are narrower roads and drivers use them for a speedway. Fernbank Ave. is one road I have always driven slow on ever since I could drive, which must be 20 years. No, I don't live on Fernbank and never did.

Margie Scharff

Glenmont

- 190% increase in 5 years.
- 100% increase in 2 years.
- 48% increase in 1 year.

In our home the budget plan for 1978-79 was \$51 per month for eleven months. Now we receive our budget plan for 1981-82 of \$121 per month. This high increase is what we are paying for less fuel consumption and much more unhealthy discomfort.

Where and when does this rip-off end?

Why can't there be some

controls on this industry?

And, how can we get the fuel oil industry to be a considerate friend of the home owner?

Delmar *Name Submitted*

*As for that tank, correspondence to Vox Pop has degenerated to name-calling and rather abstruse philosophical discussions of pacifism and patriotism. We believe all sides have had their say.* Ed

## Questions on Fernbank

Editor, The Spotlight:

This is in regards to the article in the June 18 Spotlight on the dog's death on Fernbank Ave. and the fear of letting children play in the road.

1. What happened to the leash laws in the town, or am I the only one who believes in them?
2. Children playing in the road—don't you have back yards? I can even see areas where there are no back

## Friend or foe

Editor, The Spotlight:

Let us now bury our blasts against the National Guard Tank at our schools...

Now we should re-direct our efforts against the economic rape by the home fuel oil dealers. At this time many of us are receiving our fuel oil budgets for the coming heating year. Therein is reflected an increase of 44%. To relate this to past increases we find that there is

Prompt, Courteous, Reliable

FREE Estimates

## Service Call

The Diversified Repair People

Call Us for all Your Home Maintenance Needs

### Expert Repairs

Electrical • Plumbing • Drywall  
Hot Water Tanks • Clogged Drains  
Leaky Toilets/Faucets  
Tree Removal & Pruning  
NYS Certified Pesticide Applicators  
Glass/Screen Replacement  
Insulation  
438-8059 • 489-2167

Fully Insured

References

# Community Corner

## Steak Roast

The Bethlehem PBA's steak roast and clam steam is coming up Wednesday, July 15, at Mosall's Grove in North Bethlehem. It's a day to save room for — good eating from noon on with hamburgers, chowder, clams and steak among the offerings. And the proceeds help support a variety of youth activities as well as the PBA's own activities. Tickets may be purchased from PBA President John Cox, roast chairman Paul Roberts or any Bethlehem police officer.

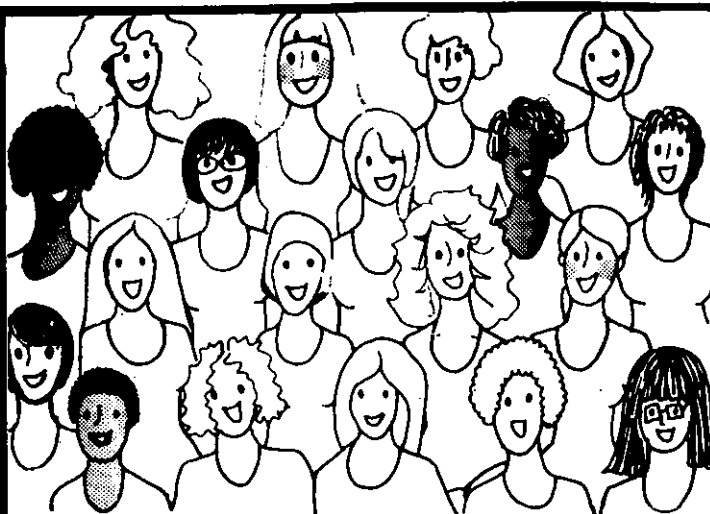


Community Corner, a public service column of important community events, is sponsored by

# City & County Savings Bank

Member FDIC

167 Delaware Avenue, Delmar (opposite Delaware Shopping Plaza) • 439-9941



# THANKS A MILLION!!



Sometime this summer, we'll be celebrating our **MILLIONTH MEMBER!!!** We've got something special just for her and for you too!  
**WATCH YOUR NEWSPAPER FOR DETAILS.**

## Gloria Stevens Thanks a Million!!

Bring this coupon into any participating Gloria Stevens and

# \$10.

Will be taken off the cost of our regular introductory offer for 6 weeks of unlimited visits for \$25.00.

Valid for new members only at participating salons.  
**Offer expires 7/18/81**

- FREE AEROBICS**  
 at participating salons
- FREE Diets • Air Conditioned
  - No Disrobing



**NOW! 2 convenient locations**

**Call 439-8104**      **Call 482-8691**  
 155 Delaware Ave.      355 Ontario St.  
 Elsmere      Albany

(Opposite Delaware Plaza)

**Over 155 Salons throughout the U.S. and Canada**

Mon.-Fri. 9 to 9 • Sat. 9 to 3  
**"Reason we're so big?... We're the best!"**



## Phil Giaccone's

**CHEF JIM THOMPSON'S SPECIALS**

<p><b>\$6.95 Specials</b></p> <ul style="list-style-type: none"> <li>• Stuffed Pork Chop</li> <li>• Ham w/ Champagne Sauce</li> <li>• Poached Salmon w/ cucumber &amp; avocado sauce</li> <li>• Veal Francaise</li> </ul>	<p><b>\$7.95 Specials</b></p> <ul style="list-style-type: none"> <li>• Roast L.I. Duckling</li> <li>• Surf &amp; Turf (Crab &amp; Sirloin)</li> <li>• Chicken Liver Sautee</li> </ul>
---	---

**\$9.95 Special—Ribs & Crab**  
 Each dinner includes: homemade soup, salad bar, dessert & coffee  
**Plus 39 other assorted items cooked to order at reasonable prices**

**Daily Luncheon Buffet \$5.45**  
**Sunday Afternoon Buffet 12:00 to 4:00**  
 Steamship Round of Beef, Roast Leg of Lamb, Stuffed Breast of Veal

- Many hot dishes • complete salad bar • dessert and coffee • plus many other extras

**Includes shrimp cocktail \$6.95**

**ALBANY MOTOR INN**      462-2962  
 (FORMERLY SCHRAFFT'S)      RT. 9W, GLENMONT

**CLIP & SAVE**

## Wallpaper Sale

**SUMMER CLEARANCE**

MANY BY IMPERIAL WALLCOVERING

**Now \$1.99 per roll**      30,000 Rolls  
 Values to \$29.95

Every wallpaper made at factory price • 1st quality • 1981 patterns

PHONE AND MAIL ORDERS UP TO 50% OFF

**DEITCHER'S**

**WALLPAPER OUTLET**  
 188 REMSEN ST., COHOES  
 SAVE \$\$\$      237-9260

80,000 Rolls in stock  
 1st Quality Save \$\$



Bethelham Public Library  
 451 Delaware Ave.  
 Delmar, NY 12054  
 7-023-