

The Spotlight

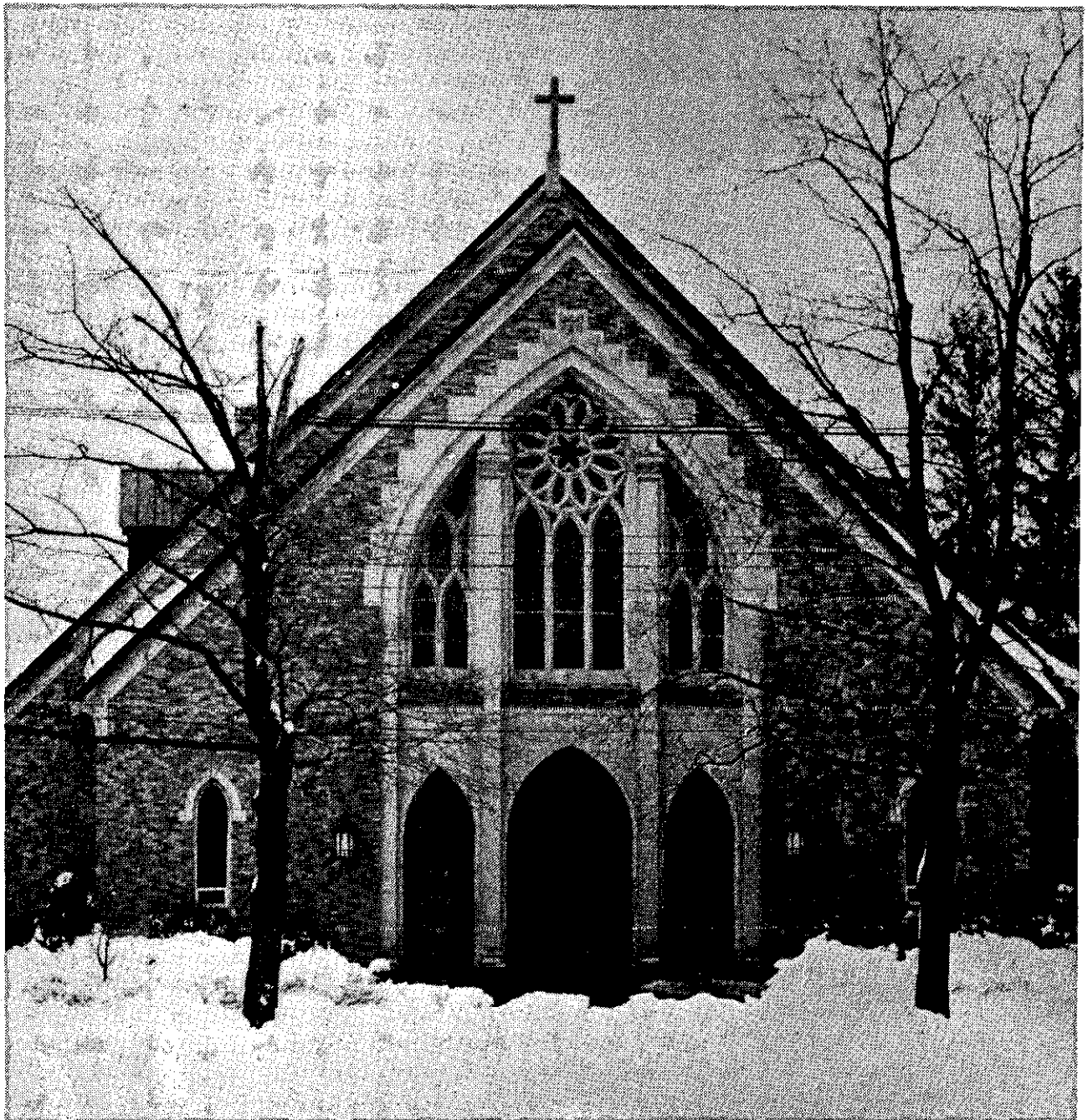
DEC. 24, 1981
Vol. XXVII, No. 52

25¢

Graphic newsweekly serving the towns of Bethlehem, New Scotland, and nearby communities

Merry Christmas

PUBLIC LIBRARY



Violins Repaired
Bows Reaired
Tennis Rackets
Restrung & Regripped
C.M. LACY
3 Becker Terrace • 439-9739

Delaware Plaza
DELMAR, NY
Open
Sundays
12:00 Noon
to 5:00 p.m.

Spotlight CALENDAR

Village of Voorheesville Board of Trustees, fourth Tuesday at 8 p.m., Planning Commission third Tuesday at 7 p.m., Zoning Board second and fourth Tuesdays at 7 p.m., when agenda warrants. Village Hall, 29 Voorheesville Ave.

"Many homeowners come to State Farm for our rates. They stay for our service.

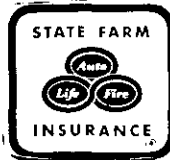


Like a good neighbor,
State Farm
is there.

Mark T. Raymond Agency
163 Delaware Avenue
Delmar, New York 12054
439-6222 or 439-9946

Prompt, personal claim service plus our traditionally low rates add up to a real homeowners insurance value. See me for details.

STATE FARM
Fire and Casualty Company
Home Office
Bloomington, Illinois



Town of Bethlehem Town Board, second and fourth Wednesdays at 7:30 p.m., Board of Appeals, first and third Wednesdays at 8 p.m., Planning Board, first and third Tuesdays at 7:30 p.m., Town Hall, 445 Delaware Ave. Town offices are open 8:30 a.m. to 4:30 p.m. weekdays

Bethlehem Recycling, town garage, 114 Adams St. Papers should be tied; cans flattened; bottles cleaned, with metal and plastic foam removed. Mon.-Sat. 8 a.m.-4 p.m.

Town of New Scotland Town Board meets first Wednesday at 8 p.m., Planning Board second and fourth Tuesdays at 7:30 p.m., Recreation Commission third Tuesday at 7 p.m., Board of Appeals meets when necessary, usually Fridays at 7 p.m., Town Hall, Rt. 85.

Preschool Story Hour, for children ages 3-5, Mondays and Tuesdays, 10, 11 or 1-1:30. Bethlehem Public Library.



Valinda's Delmar Florist

MERRY CHRISTMAS
AND
HAPPY HOLIDAYS

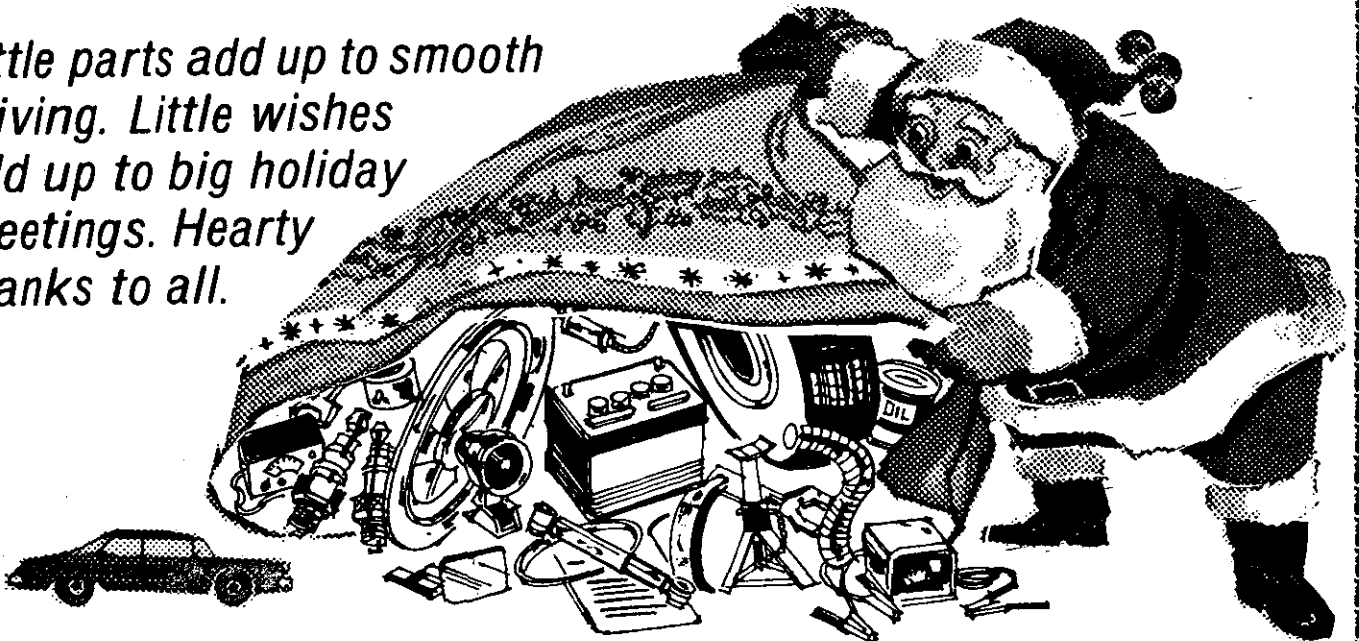
from Linda and Valerie

Daily 9 to 6
at the Four Corners

We Deliver
439-7726

MERRY CHRISTMAS and a HAPPY NEW YEAR TO ALL

Little parts add up to smooth driving. Little wishes add up to big holiday greetings. Hearty thanks to all.



VET'S GARAGE

333 DELAWARE AVE.

439-9919

Assemblyman Larry Lane's district office, 1 Becker Terr., Delmar, open Mondays 10-3.

Bethlehem Youth Employment Service, Bethlehem Town Hall, Mon.-Fri. 1-4:30 p.m. Call 439-2238.

Elsmere Boy Scout Troop 58, Thursdays throughout school year, 7:30-9 p.m., Bethlehem Town Hall.

Welcome Wagon, newcomers or mothers of infants, call 785-9640 for a Welcome Wagon visit. Mon.-Sat. 8:30a.m.-6p.m.

THURSDAY, DECEMBER 24

Bethlehem Senior Citizens meet every Thursday at the Bethlehem Town Hall, 445 Delaware Ave., Delmar, 12:30 p.m.

The Spotlight
(USPS 396 630)

Publisher

Richard A. Ahlstrom

Editor

Thomas S. McPheters

Senior Editor

Nathaniel A. Boynton

Office Manager

Arline M. Holder

Secretary

Mary A. Ahlstrom

Subscriptions

Kara Gordon

Contributing Photographers

R.H. Davis

J.W. Campbell

Sales Representatives

Susan E. Moore,

Jerry Gordon, James Sullivan,

Mary Powers, Judy Arbour

Production

Brian Cahill, Manager

Elaine Ellery

Caroline Terenzini

Vincent Potenza

Newsgraphics Printing

Gary Van Der Linden

The Spotlight is published each Thursday by Newsgraphics of Delmar, Inc. 125 Adams St., Delmar, NY, 12054. Second class postage paid at Delmar, NY. News and ad copy deadline: 4 p.m. Friday for following issue.

Subscription rates: Albany County one year \$7.50, two years \$13.50; elsewhere, one year \$9.00. Send address changes to The Spotlight, P.O. Box 152, Delmar, NY 12054.

MEMBER NEW YORK PRESS ASSN.

Phone 439-4949

SATURDAY, DECEMBER 26

Christmas Reunion II, for BCHS classes 1965-1981 paying \$5 admission; for information call 439-6804 or 439-5411, Hilton Hotel, State and Lodge streets, Albany, 9 p.m.-2 a.m.

Fine Free Week, through Jan. 2 for those with overdue books, Voorheesville Public Library.

Tenth Year Reunion for BCHS class of 1971 paying \$16.50 admission for dinner and dancing to a live band; for information call 456-1619 or 472-9183, Turf Inn, Wolf Rd., Colonie, 6:30 p.m.

Fifth Year Reunion, for BCHS class of 1976 paying \$15 admission; for information call 439-7520 or 438-0473, Americana Inn, Albany-Shaker Rd., Colonie, 8 p.m.

SUNDAY, DECEMBER 27

Evangelistic Services by Floyd Baker, Congregational Christian Church, Main St., Ravena, 7:15 p.m.

MONDAY, DECEMBER 28

Charlie Chaplin Films, "The Adventurer" and "The Count," Bethlehem Public Library, 2 p.m.

Delmar Community Orchestra, Bethlehem Town Hall, weekly at 7:30 p.m.

Delmar Kiwanis meets Mondays at Starlite Lounge, Rt. 9W, Glenmont, 6:15 p.m.

Village Artists, artists interested in painting in various media, Mondays at 7 p.m. at the Slingerlands Community Church, October through April. New members welcome.

SHAKLEE
NATURAL PRODUCTS
439-4857

SAVE
30% — 50%
Beautiful Christmas Gifts

- Artificial • Dried • Silk
- Bone China Figurines
- AnnaLee Dolls

And Many More
Sale — December 26, 1981
FLOWER WORLD

Holiday Hours:
Mon. - Fri. 9:00-9:00
Sat. 9:00-6:00
Sun. 11:00-4:00

Area-Wide Delivery Major Credit Cards Accepted

239 Delaware Ave.
Delmar
(Next to Hilchie's)
439-0971



WE CARE
CHIROPRACTIC
CENTER

163 DELAWARE AVE.
(Across from Delaware Plaza)
Delmar, New York
439-5077 - 439-0092

Study This List Carefully...

- Lower Back Pain
- Sciatic (leg) Pain
- Headache - Migrain
- Neck Pain
- Constipation
- Skin Condition
- Arm and Shoulder Pain
- Arthritis
- Muscle Spasms
- Pinched Nerves
- Dizziness
- Monthly Menstrual Pain

And many other conditions not listed!

All major medical insurance, medicare, auto liability and workman's comp. cover chiropractic health care.

WE WANT TO BE YOUR CHIROPRACTOR

SUFFERING NEEDLESSLY?

It's time you tried Chiropractic
Why wait any longer, you can be helped!

FREE
(\$50.00 Value)
Spine X-Rays
(initial visit only)
Over 15 Years In Practice

OFFICE HOURS:
Mon. - Wed. - Fri.
9:30 AM - 1 PM
3 PM - 6:30 PM

AND CAN BE TRANSFERRED TO A SICK FRIEND OR RELATIVE

WHY SUFFER ANY LONGER?
Call
439-5077

vacation Films through Dec. 31, for school-age children, for information check Children's Room, Bethlehem Public Library.

TUESDAY, DECEMBER 29

Free Career and Educational Advisement, by appointment, Bethlehem Public Library, 2-5 p.m.

Personalized Calendar-Making for preschoolers accompanied by an adult, and any other school-age children pre-registered, Bethlehem Public Library, 2 p.m.

Beginners Bible Study, Tuesdays at home of Dr. Barlie, 10 Grove St., Delmar, 8 p.m. Call 439-0981 for seating.

WEDNESDAY, DECEMBER 30

Puppet Show for preschoolers, Bethlehem Public Library, 10:30 a.m. Signup required.

Vacation Movies for children, Voorheesville Public Library, 2 p.m.

THURSDAY, DECEMBER 31

Free Career and Educational Advisement, by appointment, Bethlehem Public Library, 2-5 p.m.

MONDAY, JANUARY 4

Temple Chapter 5, RAM, first and third Mondays, Delmar Masonic Temple.

Single Parent Support Group, Bethlehem Public Library, 7:30-9 p.m.

Delmar Progress Club, business meeting, Bethlehem Public Library board room, 10 a.m.

TUESDAY, JANUARY 5

Bethlehem Sportsmen's Club, first Tuesdays, Five Rivers Environmental Center, 7:30 p.m. Guests welcome.

Bethlehem Lodge 1096, F&AM, first and third Tuesdays, Delmar Masonic Temple.

Delmar Progress Club, creative arts and garden group, to remove library decorations, Bethlehem Public Library, 9:30 a.m.

Public Hearing, Bethlehem Planning Board, on application of Bronco Development, Ltd., for approval of a building project in planned residence district PRD-3 (Skycrest), Section No. 5 located on the west side of Elm Ave.; Bethlehem Town Hall, 7:30 p.m.

Need help with your party?
Call
Personal Dining Service

- Home Weddings
- Luncheons
- Hors d'oeuvres
- Dinner for Two

439-2642

area arts

A capsule listing of cultural events easily accessible to Bethlehem-New Scotland residents, provided as a community service by the General Electric Co. plastics plant, Selkirk. Phone numbers are for information and tickets.

THEATER

"A Child's Christmas" (EBA's dance-play for children), New York State Museum, Empire State Plaza, Albany, **Dec. 26, 1:30 p.m.** Kickoff for museum's Post-Christmas Capers.

"The Sound of Music" (Four Seasons Dinner Theater), Thruway House, Western Ave., Albany, **Jan. 8-Feb. 7**, Thursday through Sunday starting with dinner at 7 p.m. 438-3985 or 459-3100.

"Morning's at Seven" (revival of Paul Osborn's Tony award-winner), The Egg, Empire State Plaza, Albany, **Jan. 22 and 23, 8 p.m.; Jan. 24, 3 p.m.**

MUSIC

Michael, McCreesh and Company perform Irish and Appalachian music, New York State Museum, Empire State Plaza, Albany, **Dec. 27, 1:30 and 3 p.m.**

"The Mikado" (Gilbert and Sullivan's operetta performed by the Manhattan Savoyards and the Albany Symphony Orchestra), Palace Theater, Albany, **Dec. 31, 7:30 p.m.** Theater box office, 465-3334, or symphony office, 465-4755.

Young Artist Concert, Israeli pianist Daniel Adni, The Egg, Empire State Plaza, Albany, **Jan. 10, 3 p.m.**

Gilbert and Sullivan A La Carte (five-singer troupe presents selections from the operettas), Cohoes Music Hall, **Jan. 15, 8 p.m.** Theater box office, 237-7523, and Community Box Office.

ART

Prints from Purchase (printmakers from State University at Purchase), Plaza Gallery, State University Plaza, foot of State St., Albany, weekdays 8 a.m.-6 p.m.

Ralph Prata, concrete reliefs, and Terry Robbins, mixed media paintings, Rensselaer County Council for the Arts, 189 Second St., Troy, **Jan. 3-Feb. 13**, Tuesday-Sunday, noon to 5 p.m.

University Invitational Show (sculpture, photography, paintings, lithographs, drawings, etc., by faculty members of seven area colleges), The Gallery, Albany Institute of History and Art, Washington Ave., Albany, **through Jan. 5.**

People of the Great Peace: Iroquois-European Relations in Early New York (with four rarely seen paintings of Indian "kings"), Albany Institute of History and Art, Washington Ave., Albany, **through January.**

"Center Ring; The Artist" (two centuries of circus art), New York State Museum, Empire State Plaza, **through March 7.**

Mark Rucker paintings and drawings, The Center Gallery, 75 New Scotland Ave., Albany, **through Jan. 8.**

FILM

"A Funny Thing Happened on the Way to the Forum" (1966), The Egg, Empire State Plaza, Albany, **Jan. 6, 7:30 p.m.**

Special On CHANNEL 17

- **Movie: "It's a Wonderful Life"**
Thursday, 9 p.m.
- **The Messiah**
Friday, noon
- **All Creatures Great and Small: "Alarms and Excursions"**
Saturday, 8 p.m.
- **Nova: "Anatomy of a Volcano"**
Sunday, 8 p.m.
- **Great Performances: "Die Fledermaus" (simulcast)**
Monday, 9 p.m.

Owens-Corning Fiberglas supports public television for a better community.

Owens-Corning is Fiberglas



GENERAL  ELECTRIC

SELKIRK, NEW YORK 12158
An Equal Opportunity Employer

Van Dyke's
APPLIANCES

Visit Our New Location
(Next to Carvel Ice Cream)

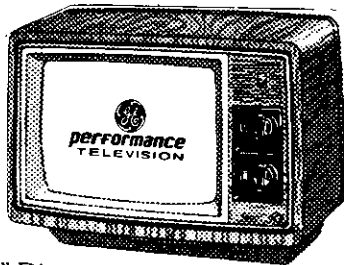
Now more than ever - it's important to

**MAKE EVERY
DOLLAR COUNT**

-and here are the General Electric Buys to do it!

COLOR TV FROM 

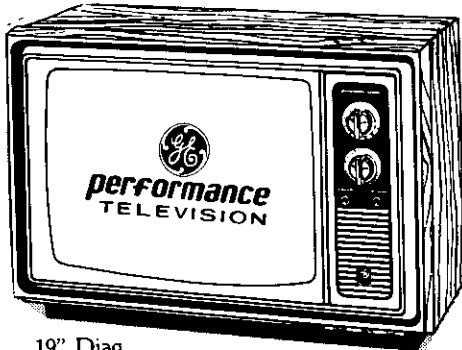
- All with • AFC - Automatic Frequency Control
- In-Line Black Matrix Picture Tube • 100% Solid-State Chassis



10" Diag.
\$227 Reg. \$295



13" Diag.
\$256 Reg. \$339

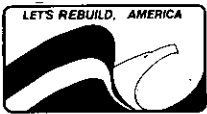


19" Diag.
\$314 Reg. \$379



25" Diaa.
\$474 Reg. \$559

25" diagonal COLOR TV
MEDITERRANEAN STYLING... cabinet constructed of a combination of genuine hardwood solids and simulated wood.



IN THE 80's

222 Delaware
Avenue,
Delmar

Van Dyke's
APPLIANCES 439-6203

Mon.-Thurs. 10-7
Fri. & Sat. 10-5

BCHS Curriculum Information Meeting, for all parents of BCHS students to talk with guidance counselors and teachers about courses to be offered in 1982 BCHS cafeteria, 8 p.m.

WEDNESDAY, JANUARY 6

Onesquethaw Chapter, Order Eastern Star, first and third Wednesdays at Masonic Temple, Kerwood Ave., Delmar, 8 p.m. (From Jan. 6 to June 2, from Sept. 1 to Dec. 1.)

PTSA Program Meeting, Voorheesville Elementary School 7:30 p.m.

Bethlehem Central Board of Education, first budget hearing session of 1982, Elsmere Elementary School, 8 p.m.

THURSDAY, JANUARY 7

New Scotland Kiwanis Club Thursdays, New Scotland Presbyterian Church, Rt. 85, 7 p.m.

Orientation for grade 8 parents to tour Bethlehem Central High School, 8 p.m.

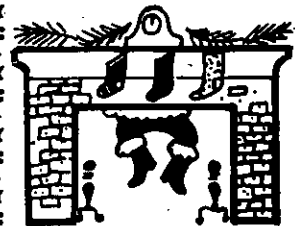
Delmar Fire Dept. Ladies Auxiliary, regular meeting second Thursday of each month except August, at the fire house, 8 p.m.

New Scotland Democratic Social Club, second Thursday, 8 p.m. Trotta's Restaurant, Delaware Tpk., Delmar. Interested parties welcome.



**Burt Anthony
Associates**
for
INSURANCE

**Best Wishes
for the
Holidays**



208 Delaware Ave.
Delmar
439-9958



The Spotlight

Graphic newsweekly serving the towns of Bethlehem and New Scotland, Albany County, N.Y. • (518) 439-4949

BETHLEHEM

Town's best kept secret — giving in a low key

The Bethlehem Festival's annual holiday sharing project hasn't gotten much publicity in the past — "We purposely keep it low key," one participant said recently — but we'd like everyone to know this happy story. It's been going on for many years.

Packages are delivered, a few days before Christmas, to families within the community who need a little help at this time of year to feel as festive as the rest of us. A typical package contains a frozen turkey, assorted canned goods, fresh fruit (oranges and bananas), homemade cookies, hand-knit mittens, and stocking stuffer gifts.

Last year, according to Bethlehem school social worker B.J. Lornell, the unofficial project coordinator, 51 local families — a total of 229 people — received packages. Of these, 18 were single-parent families, seven were families without school-age children, and two were students living on their own without parental support.



Carolyn Tweedie of Delmar was among the Bethlehem Festival volunteers who sorted and packed Christmas donations Monday.

Spotlight

These statistics are available, but it's much harder to be specific about the people responsible for filling the packages, because this giving is done quietly. There's no competing with others to win a contest sponsored by a radio station. There's no newspaper

listing of amounts donated. And the pride and privacy of the recipients is so well-protected that only a few of the project participants know who they are.

Some of the givers can be identified. The canned food, for example, comes from students in the five Bethlehem elementary schools and the Bethlehem Middle School. During December, they bring contributions and watch happily as their collections of cans make higher and higher stacks in a school hall.

Bananas are donated by importers at the Port of Albany. Many of the brightly-colored mittens (seven pairs this year) are the handiwork of Ruth Kramer, a Stratton Place resident. The cookies are baked and packed by members of a retired persons' organization, under the direction of William Reuter.

The turkeys, oranges and gifts are purchased with money from the Bethlehem Festival Fund. This is money donated by people of all ages, either through a church or organization's collection or individually. Robert Jackson of 36 Lyons Ave. is the fund treasurer, and he reported that last year \$604 was spent to help fill the holiday packages.

Every year, more local groups hear about the project and become involved. Its volunteer ranks now include representatives from service clubs, three local scout troops, the staff in a medical office, business people, school nurses and many individuals.

About the families who receive the packages, Mrs. Lornell said simply: "They are very appreciative." She and Bethlehem school nurses have put many names on the deli-

Good Morning, Elsmere

When Judy Steinberg, who is a talent coordinator at ABC Television's "Good Morning America," got the assignment to find out what kids think about Christmas and the holidays she knew exactly where to call.

"I called my old elementary school, Elsmere," says the Delmar native. And Principal Richard J. Herrmann had no trouble rounding up answers to such

questions as what Santa does in his spare time.

As a result, Elsmere letters will be read on the show, which airs from 7 to 9 a.m. on Channel 10 Thursday and Friday.

"Oh, we got some dillies," says Miss Steinberg. "A lot of kids think all Santa does in his spare time is eat and sleep. Some think he does house work, or rides around in his Corvette."

very list, after a private approach that goes: "We have (these things). Can you use them?"

Some active church workers, including Helen Denny of Delmar Place, are also particularly alert to the needs of their neighbors and see that certain names get on the list. It's not a static list, but one that reflects changing circumstances: the father temporarily

out of work, the recently-divorced young mother, the older couple hit hard by inflation.

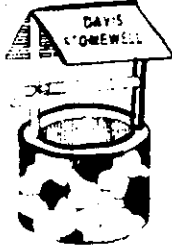
No donors are around to see the reactions when packages are opened, but it's enough to be able to imagine the joy of a young child with a mysterious present to open, or the family sitting down to a traditional holiday dinner together.

The best part of the story is that it doesn't end there. The Bethlehem Festival Fund is available all year long to pay for things some local families can't afford: a student-funded field trip, sneakers or boots, eyeglasses, a week for a child at a summer camp...even some professional counseling on occasion.

People who have lived in Bethlehem more than 25 years

can remember when White Christmas Festivals brought everyone together at one of the schools for music and pageantry and passing-the-hat. That community-wide event is long gone, mostly because the numbers outgrew any one site, but its spirit of celebration and gift-giving has continued down through the years.

Spotlight classifieds work!



Stonewell Plaza

ROUTES 85 & 85A NEW SCOTLAND ROAD, SLINGERLANDS

HOME OF

DAVIS STONEWELL MARKET AND WALLACE'S QUALITY MEATS
FOR FABULOUS FOOD AND MEATS PHONE 439-5398



HAPPY HOLIDAYS FROM ALL OF US

WHAT A HOLIDAY FEAST

- Standing Rib Roasts of Beef USDA Choice
 - 5th - 7th Ribs \$2⁸⁹ lb.
 - 1st - 4th Ribs..... \$3²⁹ lb.
- First Prize Boneless Saratoga Hams (Whole or Halves) \$2⁵⁹ lb.
- Whole Sirloin Tips (We'll tie them for your holiday feast) \$1⁸⁹ lb.

Tobins First Prize

- Whole Pork Loins (custom cut) \$1¹⁹ lb.
- 10 lbs. or more Ground Chuck..... \$1¹⁹ lb.
- Lean & Tasty Ground Round ... \$1⁵⁹ lb.

Made From Tobins Pork

- Wallace's Delicious Storemade Breakfast Sausage..... \$1¹⁹ lb.

From Our Gourmet Cheese Dept.

- Cheese of the Week Winespread.... \$2⁹⁹ lb.

Deli Delights

- Cooked Ham (New Extra Lean) \$1⁹⁸ lb.
- American Cheese \$1⁹⁸ lb.

Make It Easy On Yourself—Try One of Nancy's Party Platters!

For Your Best Freezer Buys Shop Wallace's

- USDA CHOICE Cut, Wrapped and Labeled Forequarters of Beef \$1²⁹ LB.
- Sides Of Beef \$1³⁹ LB.
- Hindquarters Of Beef \$1⁴⁹ LB.
- Whole NY Strips \$2⁸⁹ LB.

- Hills Coffee—Electric, Perk, Reg., Automatic Drip 1 lb. \$1⁹⁹
- Mueller Lasagne 1 lb. \$⁷⁹
- Hunts Prima Salsa—All Varieties 32 oz. \$1¹⁹
- Royal Gelatin—All Flavors 3 oz. 3/\$⁸⁹
- Schweppes Ginger Ale, Club, Tonic, Vichy Water 28 oz..... 2/\$⁸⁹
- Coke 16 oz. bottles \$1⁷⁹
- Frito Lay, Ruffles & Lays 8 oz. \$⁸⁹
- Nabisco Snack Crackers 8 oz. \$⁹⁹

DAIRY

- Crowley 2% Milk Gal. \$1⁶⁹
- Crowley Sour Cream 16 oz. \$⁷⁹

FROZEN FOODS

- River Valley Strawberry 1 lb. \$⁸⁹

PRODUCE

- Potatoes 10 lbs. \$⁹⁹
- Pascal Celery \$.⁴⁹ Bunch

Yule contest winners

The winner of the Bethlehem Garden Club's annual Holiday Home Decorating Contest is the home of Mr. and Mrs. Daniel Berman, 9 Keith Rd., Delmar.

Second prize this year went to Mr. and Mrs. Neal Baldwin, 20 West Bayberry Rd., Glenmont. Third prize was won by Mr. and Mrs. Daniel Lawlor of 369 Elm Ave., Delmar.

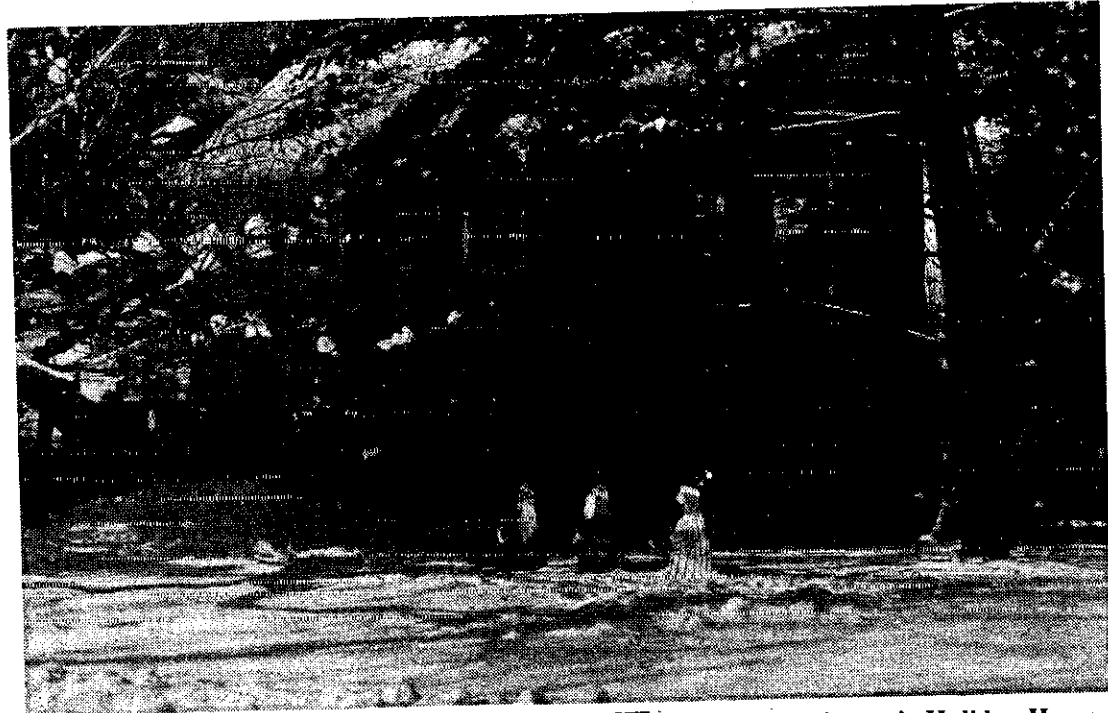
Mrs. Clifford Bowdish, chairman of the club's beautification committee, said judges selected by the club visited all entrants last week.

Orchestra gets grant


The Delmar Community Orchestra has received a \$500 grant from the New York State Council on the Arts through its decentralization program. The orchestra, which presents numerous free concerts in the area, was one of 34 area groups to receive grants ranging from \$300 to \$3,000.

Poetry prize to Goodman


BCHS senior Jeff Goodman won second place in this year's College of New Rochelle Poetry Festival. Maura McShane was a finalist in the competition. *In Delmar, The Spotlight* is sold at Handy Andy, Delmar Card Shop, Tri-Village Drug and Johnson's Stationery.



The Berman home at 9 Keith Rd., Delmar, first prize winner in this year's Holiday Home Decorating Contest. Spotlight



BAUSCH & LOMB



SOFLENS
(polymacon)
Contact Lenses

ATTENTION

CSEA Employees

Yes, you can come to Buenau's Opticians for all your vision care needs. We are now accepting your fee schedule as payment in full.



- Complete eye examination by licensed Optometrists
- Eye Glasses
- Contact Lenses

For a limited time only, total money-back guarantee on Contact Lenses.

3 convenient locations to serve you

- 71 Central Ave., Albany 434-4149
- 228 Delaware Ave., Delmar 439-7012
- Empire State Plaza (Concourse Level) 465-1088

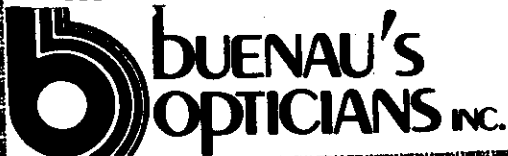
JUST... \$99* COMPLETE

Mike Buenau Tom Hughes

BI-FOCAL SOFT CONTACTS NOW AVAILABLE

WE HAVE THE NEW CONTACT LENSES FOR EXTENDED WEAR!
You can leave them in for weeks at a time — even while sleeping!



BUENAU'S OPTICIANS INC.

PREPARATION For MAY EXAM

Our 43rd Year

College Boards SAT

CLASSES BEGIN IN FEBRUARY

Call Days, Eves. & Weekends or Visit Our Center

Albany Center
163 Delaware Ave., Delmar
(518) 439-8146




Centers In Major US Cities & Abroad

PAPA'S RESTAURANT & LOUNGE

Every Friday is Fish Day

Rainbow Trout \$4.85

Baked Sole \$4.65

Fried Haddock \$4.99

Salad, spaghetti or french fries, coffee

TERRIFIC PIZZA, TOO!

Every Thursday
Eggplant Parmagiana \$4.85

Every Saturday
Veal & Peppers \$5.15
Veal Parmagiana \$6.95

**WE DELIVER TO THE
TRI-VILLAGE AREA**

Delivery hours: Mon.-Sat. 11a.m. - 11p.m.

Mon.-Sat. 11:00 a.m. - Midnight,
Sunday 3:00 p.m. - Midnight

261 Delaware Ave.
439-5673, 439-4544

DINAPOLI

OPTICIANS | SINCE 1940



FASHION EYEWEAR & CONTACT LENSES



1 Delaware Plaza
DELMAR
439-6309/439-9191

Styvesant Plaza
ALBANY
489-8476

457 Madison Avenue
ALBANY
449-3200

Mon. — Fri.
9 a.m. — 5:30 p.m.
Tues. eve. 7 — 8:30 p.m.
Sat. 9 — 12 noon

Mon. — Fri.
10 a.m. — 9 p.m.
Sat. 10 — 6 p.m.

Mon. — Fri.
9 a.m. — 5:30 p.m.
Sat. 9 a.m. — noon

BETHLEHEM

Commercial zone controls discussed

The Bethlehem Planning Board at its regular meeting last Tuesday night continued its discussion of a proposed site plan approval procedure for commercial districts. The discussion centered around what would be subject to SPA and what would not.

Planning Consultant Edward Kleinke proposed three areas for inclusion: New construction; major additions over 25 percent of existing area and all construction in or within 500 feet of an existing historic district as designated by the state, listed in the National Register of Historic Places, or as designated by and under ownership of the town.

Although it was not mentioned at the meeting, the board's consideration of commercial site plan review was prompted in part by a possible commercial development at the Toll Gate intersection in Slingerlands, an area which residents are attempting to place on the National Register.

Board members John LaForte, Marcia Nelson and T.E. Mulligan said they felt commercial property abutting on a residential area should also be subject to SPA by the board.

Building Inspector John Flanigan said he thought the board would be saddling itself with too much work. He noted that virtually all of the commercial property along

Delaware Ave. abuts on residential areas.

"It's not a question of the workload," Mulligan said. "It's our job to establish control. We don't have any control today."

The board then instructed Kleinke to draw up a proposal including suggestions made by board members. Once agreed upon this proposal will be forwarded to the town board for its consideration as an amendment to the zoning ordinance.

The board's next meeting is Jan. 5, when it will hold a public hearing on the Skycrest development in Delmar.

Vincent Potenza

Zautner files appeal

As expected, developer G. William Zautner has appealed the Bethlehem Planning Board's denial of his subdivision plans on Elsmere Ave. to State Supreme Court.

The board's 5-1 vote Nov. 17 went against the advice of board attorney Earl Jones, who cautioned that Zautner had complied with the law. But board members objected to the way Zautner had proceeded, first putting up two duplexes and then making his request for the subdivision which would have permitted two more duplexes. Board Chairman Edward Sargent said the "morality of the situation" dictated the refusal.

The proposal also drew heated opposition from

ALOE VERA



Natural & Organic
Running or Sunning
take ALOE along...

a complete line of



Personal Care Products

Available at the
Spotlight Building

Call Mary
439-5363

neighbors.

Sargent and other board members were served notice of the law suit at their meeting last week and the town was directed to appear in court Jan. 22.

Variations considered

The Bethlehem Board of Appeals held a public hearing at its meeting last Wednesday night for James Mancuso of 15 Oakwood Pl., Delmar. Mancuso sought a variance to the zoning ordinance so that he might construct an addition to his home.

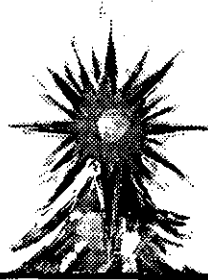
The board set a date for another public hearing on behalf of Valley Equipment Co., which wishes to increase the underground fuel storage capacity of the Arco service station at Rt. 9W and Feura Bush Rd. from 24,000 to 36,000 gallons. The hearing will be Jan. 13 at 8 p.m.

The board returned an application for a public hearing to Harry Gochee, who seeks to amend the conditions and safeguards imposed on his property at Kenaware Ave. and Dawson Rd. after a hearing earlier this year. Gochee did not specifically state on the application that it was such an amendment he was seeking.

The board also instructed its attorney to draw up a resolution granting a variance to R&D Construction Co. The firm had built a house at Murray Ave. and Catherine St. about a foot and a half too close to Catherine St. and subsequently had to petition the board for a variance.

L.S. Ferguson
Plumbing & Heating
Inc.

25 Years Experience
 For all your Plumbing
 or Heating needs call
 765-2990 or 1-868-2502



Merry Christmas



*and a New Year of
Peace and Happiness*

Sincerely,

Mary & Dick Callahan

Publisher

Net Boynton

Senior Editor

Tom Anepheeters

Editor

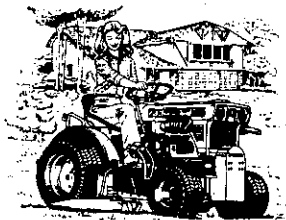
**The
Spotlight**

KUBOTA

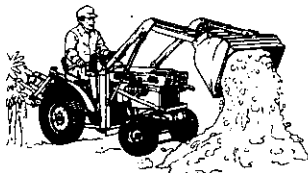
Diesel - Compact Tractors

from 12 - 55 HP

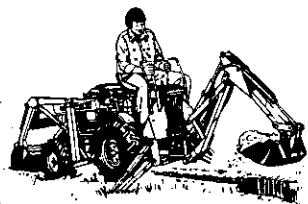
- 4 wheel drive
- Diesel engine for low maintenance and fuel economy
- Standard rear PTO
- Front PTO shaft
- Differential lock
- Independent rear brakes
- Hydraulic 3 pt. hitch, Category 1
- 6 forward, 2 reverse speeds
- Full range of matching implements including mowers, fillers, snowblowers, loaders, and backhoes



Mower



Loader



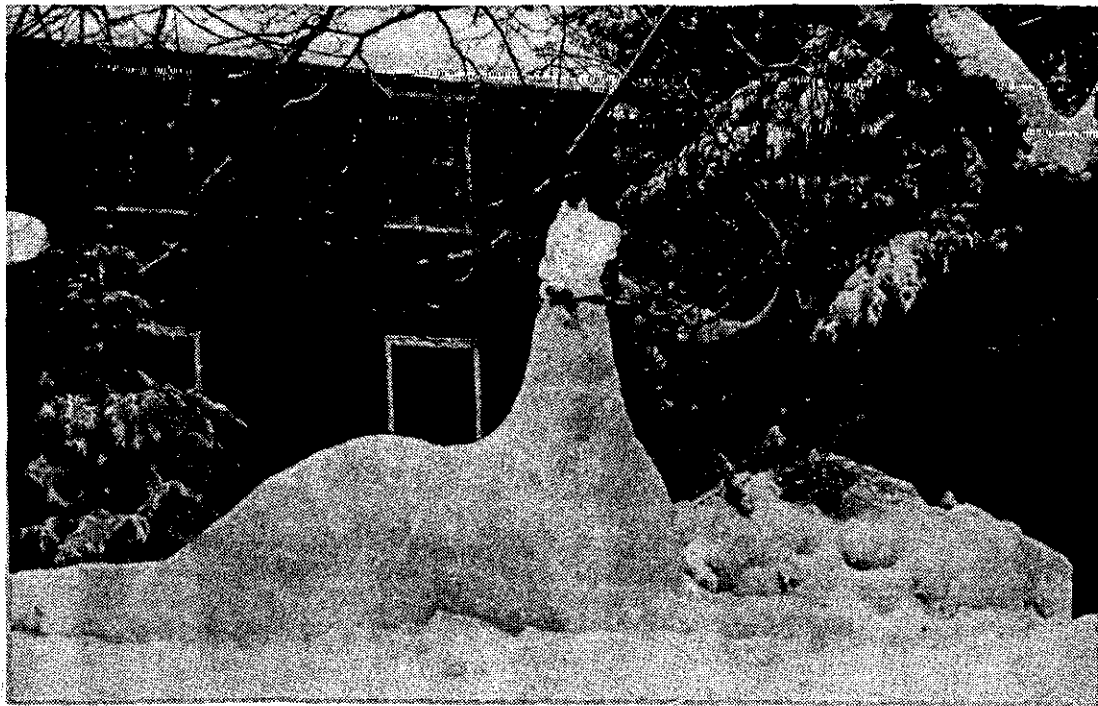
Backhoe



Abele Tractor and Equipment Co., Inc.

Sales • Service • Rentals

72 Everett Rd.
Albany, New York 12205
438-4444



159 Winnie Rd. may be the safest house in Delmar, guarded by this benign snow monster. "It's just something that grew out of the snow," says Barbara Wooster. "I wondered why nobody had come to visit us lately." John Yacobian, 18, and Charles Wooster, 17, are responsible, she said. *Spotlight*

Snowmobiles return

The snows have brought the snowmobilers out in force, and some people in Bethlehem aren't at all happy about the late-night roar in their backyards.

"They're really going beyond nuisance stage," Supervisor Tom Corrigan said

Friday. "We may have to consider some kind of curfew."

One of the prime trouble spots is the Albany City water line, which traverses the town on its way south to the Alcove Reservoir. That land is posted, although frequently used by walkers, joggers and bicy-

clers. Corrigan said Albany officials have told him they will cooperate in any move the town makes to handle the problem.

The supervisor said he had attempted to contact snowmobile clubs to discuss the problem of late-night activity, but could find no one to talk to.

Mon.-Sat.
9 a.m. to 9 p.m.
439-2613

FOWLER'S LIQUOR STORE

CLOSED
CHRISTMAS
DAY

257 DELAWARE AVE., ELSMERE (at the light)
PARKING ALL AROUND THE STORE

All of us at Fowler's wish you MERRY CHRISTMAS HAPPY HANUKKAH

For these festive occasions, shop Fowler's for low, low prices
on liquor, wine, liquer and champagne

Many In-Store Special Discounts

- Free Gift Wrapping • Gift Certificates
- It Is Always Our Pleasure To Be Of Service
We thank you for your continued patronage*

Meetings set on gypsy moths

Public meetings to consider whether there should be aerial spraying for gypsy moths in Bethlehem and New Scotland next spring will be held in both towns next month.

The Bethlehem meeting is scheduled for Jan. 21 at 8 p.m. at Bethlehem Town Hall. In New Scotland, the meeting will be Jan. 27 at 7 p.m. at the town hall.

The meetings were set by the Albany County Health Department, which has been surveying the damage from last summer's infestation with the Albany County Cooperative Extension Service. Those surveys include aerial photographs which should give the clearest picture yet on the type and location of damage.

Richard Svensen, director of environmental health for the health department, said the county expects to have detailed information ready for the public meeting. Preliminary results indicate that New Scotland had considerable damage and that Bethlehem was less hard hit, he said.

"I don't think there's much

that can be sprayed in the Town of Bethlehem," Supervisor Tom Corrigan said Friday.

Don't feed the deer

Bethlehem and New Scotland residents are seeing more deer this year than they have for a long time. And with the recent snowfall there is concern that all those deer won't make it through the winter.

True, say conservation officials. A lot of them won't survive. But the worst thing people can do is attempt to feed white-tailed deer.

"It's kind of an all-or-nothing proposition," says Alan Mapes, director of the Five Rivers Environmental Education Center in Delmar. "You'd have to do it all year round."

Deer cannot easily adjust from their natural forage to artificial foods, so emergency feeding does very little good. What it does do, says Mapes and other naturalists, is draw deer from a wide area, concentrating them where there is not enough natural forage for all. The result is competition and starvation.

FREE Testing in December

School failure is one history a child should not repeat. Prepare your child now.

Bring this ad for free testing.

THE LEARNING CENTER TUTORING

Individual Testing: with special Tutoring programs in Reading, Phonics, Spelling, Speech, Language Development, Study Skills and Mathematics.

Prepare for N.Y.S. #1 Competency Test. Call Mon. thru Sat., 9 a.m. 'til 9 p.m.

- Albany — 12 Colvin Ave. 459-8500
- Clifton Park — Rts. 9 & 146 371-7001



Happy Holidays

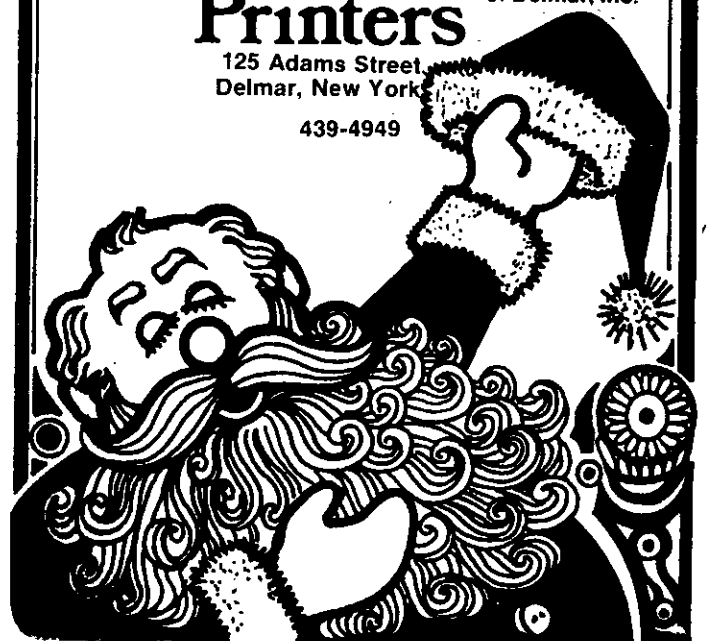
We wish you peace and happiness for the Holidays and always.

Publishers of The Spotlight

Newsgraphics Printers of Delmar, Inc.

125 Adams Street
Delmar, New York

439-4949



1/2

PRICE SALE

On All
Christmas Decorations—
Lights—
Artificial Trees—
Wreaths — Etc.

**STARTS SATURDAY
DEC. 26th**

**PRICE GREENLEAF
14 Booth Rd., Delmar**

439-9212

(next to A&P)

Store Hours:
Mon. — Fri. 8:30 - 8:30
Sat. to 5. Closed Sun.



Q: Last minute shopping?

A: DELAWARE PLAZA

BETHLEHEM

School lunch costs may force changes

"We're watching the figures" was the way Ann Treadway, Bethlehem school lunch program coordinator, put it when asked recently about the effects of federal cutbacks and district price increases.

She said the average daily lunch count was down about 400 from last year's figures following substantial price increases this fall. Currently about 30 percent of Bethlehem's 3,500 pupils buy their

lunch at school.

Lunch for an elementary pupil now costs 75 cents, lunch at the middle school is 80 cents and at the high school, 85 cents. A la carte items, served primarily at the high school, also saw price increases.

The price hikes reflect not

only higher food and labor costs, but also federal and state subsidy cutbacks from about 23 cents a lunch to 16 cents. Another 5-cent cut is scheduled next year.

The district requires its lunch program to be self-supporting, but this was not always the case, Mrs. Treadway said.

Free and reduced price lunch subsidies were not cut, but only about 3 percent of Bethlehem students qualify for this program, Mrs. Treadway said.

"The whole key to keeping going the way we have is to have more kids buying," she said. So far district officials have declined to adopt promotional schemes such as putting stars under several lunch trays and giving the pupils getting those trays a free lunch.

But alternatives to the current program are under consideration. A representative of the State Education Department's Bureau of School Food Management and Nutrition is due in Bethlehem schools in mid-January

Hi!

Hi there! Thanks for bringing your business our way. We hope you have a happy holiday season and we look forward to working with you in the future as we have in the past. We enjoy your patronage.



- Alfred's Fabrics
- Baskin-Robbins
- Color Your World
- Delaware Plaza Liquor
- Denby's
- DiNapoli Opticians
- Donnelly Shoes
- Fabric Care Center
- Golden Krust
- Grand Union
- Home & City Savings Bank

- Honeycomb Restaurant
- John's Normanside Beauty Salon
- Kay-Bee Toy & Hobby
- Key Bank
- Lee's Chinese Restaurant
- LeWanda Jewelers
- Little Folks Shop
- McBoogle's
- McDonald's Restaurant

- OTB
- Paper Mill
- Paul Mitchell's
- Men's Wear
- Plaza Pharmacy
- Record Town
- Rogers Sport & Ski
- Tom's Barber Shop
- Town & Tweed
- Village Shop
- Woolworth's

DELAWARE PLAZA MERCHANTS ASSOCIATION

THE CRYSTAL CHANDELIER



HOLIDAY CHEER

Gift Certificates Available

278 DELAWARE AVE.
DELMAR • 439-4643

o observe and then advise district officials.

In addition, Mrs. Treadway said, she has been making inquiries among local food management companies. If the district opts to have the lunch program run under contract with such an organization, bids would be sought, with the district specifying the prices to be charged, whether the district will participate in the federal food subsidy program, the kinds of lunches and so forth.

The district would accept the lowest bidder "willing to do it the way we want," Mrs. Treadway said.

If an outside company took over, she added, it would hire the current staff, now numbering 30. She pointed out that the lunch program receipts must cover not only wages for these workers, but also the costs of fringe benefits.

The program was \$16,000 in the red last year, Mrs. Treadway said, and the price increases this year are in part to cover that deficit.

Mrs. Treadway said the issue of whether to have a lunch program and how to finance it "comes down to the philosophical question: is the lunch program part of the educational program?"

"Things are so tough across the whole spectrum of the economy today," she said, "I doubt the board will be willing" to shift the burden to the taxpayer.

Caroline Terenzini
Board wraps it up

Seventeen minutes was all the time it took the Bethlehem Central school board to wrap up its business last

CLIP AND SAVE

WARM WINDOW
REDUCES
WINDOW HEAT LOSS

UP TO **83%**

New Decorative Roman
Shade On Sale NOW!

Energy Saving Pays For Itself

DEITCHER'S

WALLPAPER OUTLET
188 REMSEN ST., COHOES
SAVE \$\$\$ 237-9260

Wednesday.
In a cluster of appointments and resignations was the resignation for retirement of Mrs. Dorothy Hargrave, a teacher aide at the Clarksville School. Mrs. Hargrave has been in the district's employ 10 years.

District Superintendent Lawrence A. Zinn reported the fall continuing education program attracted 387 residents, 12 non-residents and 101 persons with a senior citizen's free pass.

The board adopted a resolution of condolence for the family of W. Jack Weaver of Delmar, who died Tuesday. He served as the first president of the board, back in the late 20's. Current President Bernard Harvith said effects of Mr. Weaver's leadership are still being felt.

SALE Christmas TREES and DECORATIONS

1/2 PRICE

4 DAYS ONLY
Dec. 24th
Thru
Dec. 29th



HILCHIE'S
SERVITUR HARDWARE
235 DELAWARE AVE.
DELMAR, N.Y. 12054



Route 144 **Tel: 767-2252**

3 FARMS DAIRY STORE

Now Selling Fresh Cut Prime Meat, Full Line Of Cold Cuts & Deli Items.
Special Items Cut To Order—Butcher Available Tuesday-Saturday.

FROM OUR MEAT DEPARTMENT	
U.S.D.A Choice Grade Western Beef — Hind Quarter 170lb. avg.	\$1.49 lb.
Whole Top Round 18/20 lb. avg.	\$1.89 lb.
Roasts, London Broil & Steaks	
Whole Top Sirloin 12 lb. avg.	\$1.83 lb.
Roasts & Steaks	
Whole New York Strip 10-12 lb. avg. cut into steaks	\$2.89 lb.
Whole Pork Loin 14-17 lb. avg. Roast & Chops	\$1.33 lb.
<i>All above orders cut and wrapped at no extra charge. Prices subject to change.</i>	

<table border="1" style="width: 100%; border-collapse: collapse;"> <tbody> <tr> <td>Homemade Italian Sausage</td> <td style="text-align: right;">\$1.69 lb.</td> </tr> <tr> <td>Bulk Country Sausage (no preservatives added)</td> <td style="text-align: right;">\$1.47 lb.</td> </tr> <tr> <td>Country Style Slab Bacon Sliced</td> <td style="text-align: right;">\$1.44 lb.</td> </tr> <tr> <td>Boneless Chicken Cutlets</td> <td style="text-align: right;">\$2.29 lb.</td> </tr> <tr> <td>Whole or Split Chicken Breasts</td> <td style="text-align: right;">\$1.15 lb.</td> </tr> </tbody> </table>	Homemade Italian Sausage	\$1.69 lb.	Bulk Country Sausage (no preservatives added)	\$1.47 lb.	Country Style Slab Bacon Sliced	\$1.44 lb.	Boneless Chicken Cutlets	\$2.29 lb.	Whole or Split Chicken Breasts	\$1.15 lb.	<table border="1" style="width: 100%; border-collapse: collapse;"> <tbody> <tr> <td>Boneless Chuck Roast</td> <td style="text-align: right;">\$2.19 lb.</td> </tr> <tr> <td>Center Cut Chuck Steak or Roast</td> <td style="text-align: right;">\$1.69 lb.</td> </tr> <tr> <td>Cubed Steaks</td> <td style="text-align: right;">\$1.89 lb.</td> </tr> <tr> <td>Swiss Steaks</td> <td style="text-align: right;">\$2.39 lb.</td> </tr> <tr> <td>Lean Stew Beef</td> <td style="text-align: right;">\$1.79 lb.</td> </tr> <tr> <td>Lean Ground Chuck Patties 4-1 & 6-1</td> <td style="text-align: right;">\$1.29 lb.</td> </tr> <tr> <td colspan="2" style="text-align: center;">Offer valid 12-23 to 12-29-81</td> </tr> </tbody> </table>	Boneless Chuck Roast	\$2.19 lb.	Center Cut Chuck Steak or Roast	\$1.69 lb.	Cubed Steaks	\$1.89 lb.	Swiss Steaks	\$2.39 lb.	Lean Stew Beef	\$1.79 lb.	Lean Ground Chuck Patties 4-1 & 6-1	\$1.29 lb.	Offer valid 12-23 to 12-29-81	
Homemade Italian Sausage	\$1.69 lb.																								
Bulk Country Sausage (no preservatives added)	\$1.47 lb.																								
Country Style Slab Bacon Sliced	\$1.44 lb.																								
Boneless Chicken Cutlets	\$2.29 lb.																								
Whole or Split Chicken Breasts	\$1.15 lb.																								
Boneless Chuck Roast	\$2.19 lb.																								
Center Cut Chuck Steak or Roast	\$1.69 lb.																								
Cubed Steaks	\$1.89 lb.																								
Swiss Steaks	\$2.39 lb.																								
Lean Stew Beef	\$1.79 lb.																								
Lean Ground Chuck Patties 4-1 & 6-1	\$1.29 lb.																								
Offer valid 12-23 to 12-29-81																									

DELI ITEMS	
Potato & Macaroni Salads	74¢ lb.
N.Y.S. Cheddar Cheese (sharp)	\$2.20 lb.
Land Of Lakes American Cheese	\$1.89 lb.
Cooked Salami	\$1.49 lb.
Cooked Ham	\$2.19 lb.
Cooked Roast Beef	\$3.85 lb.
5 lb. Loaf	\$1.79 lb.
Bologna	\$1.67 lb.
Turkey Breast	\$2.59 lb.

SPECIAL ITEMS — DAIRY PRODUCTS	
1 lb. 3 Farms Cottage Cheese	76¢
1 Gallon Homogenized Milk	\$1.75
1/2 Gallon 3 Farms Ice Cream	\$1.65
1 Pound 3 Farms Tub Butter	\$1.55
1 Qt. Farms Fresh Churned Buttermilk	57¢
1/2 Ga. Tropicana Pure Orange Juice	\$1.70
3 Farms Old Fashioned Egg Nog	94¢

Restaurant window hit

The large plate glass front window at Tool's Restaurant on Delaware Ave. was broken Friday night or Saturday

morning by a pellet gun, Bethlehem police said. The damage was discovered by an employe Saturday morning.

Spotlight classifieds work!

BETHLEHEM

First sewer project going to bid

The first project — albeit a small one — in Bethlehem's multi-million dollar sewer extension project is going to bid in January. Those bids may indicate whether the town will benefit from the current recession with lower prices.

The Bethlehem Town Board last week approved plans to advertise for bids Jan. 24 for the South Albany treatment plant, which will serve 22 homes in the small community on Jericho Rd. just south of the Conrail yards. The board had already authorized the issuing of \$127,000 in bonds to cover the cost of the new treatment plant, subsurface filtering system and lift pumps, which means the contract cannot exceed that amount.

But Supervisor Tom Corrigan and Commissioner of Public Works Bruce Secor

said Friday they are hopeful the price will be considerably less. The Ravena-Coeymans Selkirk School District recently completed a new sewer line to link the Becker School on Rt. 9W with the town trunk line which runs along the Onesquethaw Creek to the treatment plant.

"They got a very good price," Corrigan said. "It would be really delightful if we could get that kind of price."

The Becker School line could incidentally make it possible for residents along Rt. 9W and at Beckers Corners to get town sewers at a later date.

Right now, however, town officials are pointing toward the massive extension of the sewer district, which will start going to bid soon after the South Albany project and continue, in stages, through March. That project, which will bring town sewers to North Bethlehem and a number of smaller areas in the town, is scheduled for completion in 1983.

In other action at last week's meeting, the town board conducted an uneventful public hearing on the request by Jenkins Management Co. to extend town water to a new section of the Dowerskill subdivision.

In Slingerlands, The Spotlight is sold at the New Scotland Pharmacy, Convenient Food Mart and The Toll Gate.

LERNER'S STUYVESANT LOUNGE

HAPPY HOUR

All Drinks Reduced

Mon.-Fri., 4:30-7:00 PM

Finest Hors d'Oeuvres in Town

Located adjacent to the most authentic dell you'll find in the Capital District!



A Holiday Party Reminder—

LERNER'S DELICATESSEN

Total Expertise In

CATERING

A family tradition for over 50 years!

We'll make your occasion

"AN OCCASION"

Stuyvesant Plaza

489-4295

Mon.-Fri. 10 AM-9 PM, Sat. 10 AM-6 PM

We deliver!

HOLIDAY GREETINGS

From All Of Us At
Roberts Real Estate

Thea Albert
Janet Crannell
Frank Downs
Bob Edwards
Ruthe Levin
Heidi Lewis
Bettie Lombard
Betsy MacKenzie

Eleanor Morton
Toni Nathan
Briand Parenteau
Catherine Parenteau
Brian Spindler
Dolores Stornelli
Ann Warren
Adele Strickland - Secretary

Joe Fiato - Sales Manager



Roberts Real Estate

439-9906

Aerobic Dance Trim

For Those Busy Ladies
Into Physical Fitness

Starting Jan. 4th
Mon. & Wed.
5 to 6 PM

Call 439-3862 eves
Linda Herzog

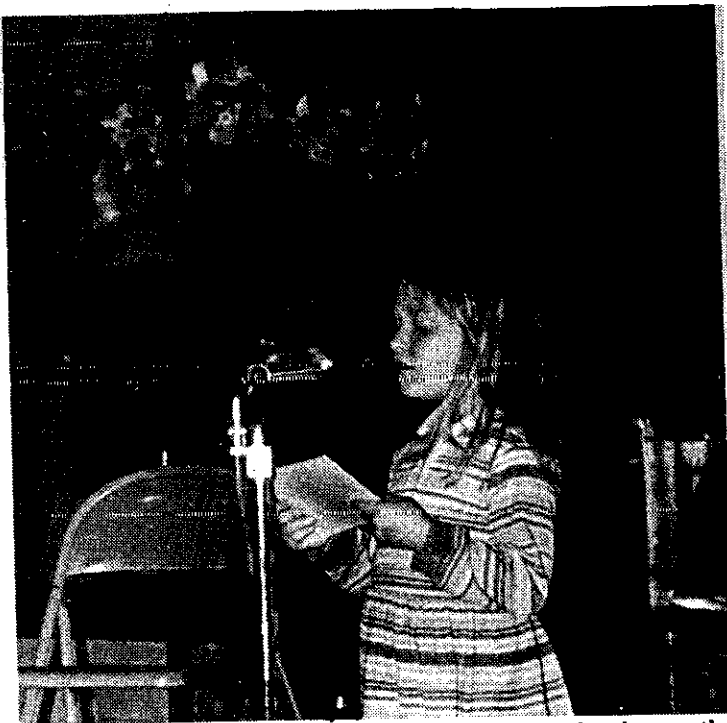
BC math strong

Students in Bethlehem schools participate regularly in contests sponsored by the New York State Mathematics League — and regularly earn high scores.

The League offers tests at four levels each year: elementary, grade 7, grade 8 and Senior High. For the first three levels, there is a single test taken in March. Bethlehem has won the county-wide plaque for the highest top five scores on all three tests in the past two years.

The high school level competition includes six 30-minute tests administered throughout the school year. Bethlehem outscored all other county schools in this contest last year, taking over first from Albany High School.

Many BCBS students also take part in the national high school mathematics contest every March, a demanding test of 30 questions to be



Carolyn Siegel, a first grader at Hamagrael School, was the narrator as her class performed "Little Boy Blue" for parents last week.

completed in 90 minutes. Schools' scores are computed by using the top three individual scores, and last year Bethlehem received a certifi-

Spotlight cate for placing in the top 10 percent of competing schools in the country.

In Selkirk, The Spotlight is sold at the Convenient Food Mart.

Mon-Sat 10:00-5:30
December Hours Fri. till 9
243 Delaware Ave., Delmar
(518) 439-6882



**Shuttle Hill
Herb Shop**

**Happy Holidays
to All**

and for your Celebrations
special crackers, cookies,
jams and holiday treats.

and always —
distinctive Greeting Cards
and Hostess Gifts

choice handmade
DOLLHOUSE MINIATURES



HOLIDAY SPECIAL "WE'RE BRINGING 'EM BACK!" GOOD OLD DAYS OF BOWLING

**FEATURING OLD FASHIONED PRICES
From December 26th thru December 31st**

**PLUS
PRIZES**



**FROM
McDonald's® AND MARV SONTZ
of Delmar
PRO SHOP**



**All Open Bowling
ONLY 50¢
PER GAME
RENTAL SHOES 25¢**

DEL LANES SPORTHAVEN LANES

(In Elsmere Across From McDonald's)
439-2224

(417 Kenwood Avenue)
439-7310

**DELMAR
Doctors dissolve
medical partnership**

One of the Bethlehem area's best known medical partnerships is being dissolved as of Jan. 1.

In a paid announcement in three weekly newspapers this week, Dr. Roger T. Drew of Delmar is stating that Dr. William Duffy of Slingerlands and Dr. James C. Leahayne of Schodack, his medical partners for most of the past decade, had requested the dissolution.

The announcement also states that Dr. Drew will

continue full-time practice in the partnership's present offices in the Delmar Professional Building, 785 Delaware Ave., Delmar.

Dr. Duffy confirmed Dr. Drew's statement, and added that he was forming a new partnership with Dr. Leahayne and Dr. Roy T. Fruiterman of Delmar, an associate in the Delmar practice.

The building is owned by Dr. Drew and Dr. Robert C. King of New Scotland, who has a dental practice in the building. Drs. Drew and King said over the weekend that the lease on the offices currently occupied by the four doctors

had expired, and that Dr. Drew would assume a new lease as of Jan. 1. There was no indication where the new partnership would relocate.

Dr. Drew said he anticipates working with other local physicians to assure full-time coverage of his patients' needs. A native of Lowell, Mass., he came to Delmar in 1955 from Norwich, Conn., and established an office in Delaware Plaza as one of the plaza's original tenants 26 years ago. He and Dr. King purchased the Professional Building six years later and opened their offices there in November, 1961.

Prior to coming to Delmar, Dr. Drew, a graduate of Nebraska Wesleyan College and the University of Nebraska Medical School, served four years on sea duty in the U.S. Navy during World War 2, and spent four years as a country doctor in Cherry Valley, N.Y. He participated in an internal medicine program associated with the University of Michigan from

1950 to 1954, and in 1954 joined the staff of the Connecticut State TB Hospital in Norwich.

In 1967, Dr. Drew formed a partnership with Dr. Lawrence Gifford and expanded his Delmar practice. Dr. Duffy joined the partnership in 1973 and Dr. Leahayne in 1976. Dr. Gifford took a position with the Smith, Kline and French pharmaceutical firm in Philadelphia in 1978, and Dr. Fruiterman became an associate in the practice in 1980.

Dr. Duffy, a New York City native, is a graduate of Georgetown University Medical School and served his internship and residency at Albany Medical Center. He served two years in the U.S. Army, including a year in Viet Nam, before returning to Albany to resume his training in internal medicine and cardiology. He joined Drs. Drew and Gifford in July, 1973.

Dr. Leahayne is a graduate of Union College and Albany Medical College. Dr. Fruiterman is a graduate of Union, received his medical degree in Belgium and did post-graduate work at Albany Medical College.

Dr. Drew's announcement is being carried in the *Spotlight*, the *Altamont Enterprise* and the *Ravena News-Herald*.

Holiday hours at library

The Bethlehem Public Library will be closed Christmas Eve and will remain so until Monday, Dec. 28. It will close early, at 5 p.m., on New Year's Eve and will not be open until Jan. 2.

Il magic won't keep you on the road . . .



Call Sid Kaplan

We do everything
Tune-ups • Radiators
Body Work • Repairs
462-6409

N.Y. Auto Radiator & Body Co.
170 Madison Ave., Albany (adj. to Empire State Plaza)

kitchen beautician from NEW LIFE

AND NOW FOR MY NEXT TRICK A DISAPPEARING ACT

IF YOU THINK THAT'S GREAT, WATCH THIS

Voila!

Mmm... SHOE SALESMAN

LET THE NEW LIFE KITCHEN BEAUTICIAN WORK MAGIC IN YOUR KITCHEN CALL

New Life™
kitchens

766-3033

Custom Doors by Millbrook Kitchens Nassau N.Y. 12123

HELP WANTED HELP WANTED

BRAVO! IT LOOKS LIKE A NEW KITCHEN BUT AT A FRACTION OF THE COST

PICTURE FRAMING

DEITCHER'S
WALLPAPER OUTLET
YE ART
AND
FRAME DEPT.

OIL PAINTINGS ORIGINAL GRAPHICS

108
REMSEN
STREET
COMOES
237-9260

ARTIST SUPPLIES



Andre Cadieux's face lights up as his paper airplane takes shape during the Bethlehem Public Library's First and Only Annual Wright Brothers Day Paper Airplane Contest last week. *Spotlight*

'82 bird count begins

New bird sightings for 1982 will be the subject of an outdoor program on Jan. 2 at 9 a.m. at Five Rivers Center, Game Farm Road, Delmar. Approximately 130 different species of birds were sighted

on the center grounds in 1981, 29 of which were sighted on the first day of the year. This program will begin the bird count at the center for the new year.

Participants should bring binoculars if possible.

SEASON'S GREETINGS

to all our friends
and customers

**PAUL MITCHELL'S
MEN'S WEAR**

DELAWARE PLAZA
439-3218



Our 32nd year making our own

ICE CREAM

Featuring

Holiday Flavors

TOLL GATE

ICE CREAM & COFFEE SHOP

in Slingerlands

439-9824

Serving Lunches and Dinners

from 11 a.m. to 10 p.m., 7 days a week

St. Paul's Episcopal Church
21 Hackett Blvd.

Albany

(Across From The Child's Hospital)

Rev. Leslie C. Hughs, Rector

CHRISTMAS SERVICES

December 24	Christmas Eve	
	Children's Service	5:30 PM
	Carols	7:30 PM
	Candlelight Procession And Holy Eucharist	8:00 PM
December 25	Christmas Day	
	Holy Eucharist	10:00 AM
December 27	Sunday After Christmas	
	Holy Eucharist	8:00 AM
	Christmas Lessons And Carols	11:00 AM

**George W. Frueh
Sons**

Fuel Oil • Kerosene
Service Anyday — Anytime

Summer Fill-Up
Cash Discount

Mobil®

436-1050

The Lobster Pound

246 Delaware Ave., Delmar—next to the A&P
Tues.-Sat. 9:30-6 • Sun. 10-2 • Closed Monday

439-3151

Merry Christmas
and Happy
New Year
to all our
friends



Snow wall makes irate neighbors

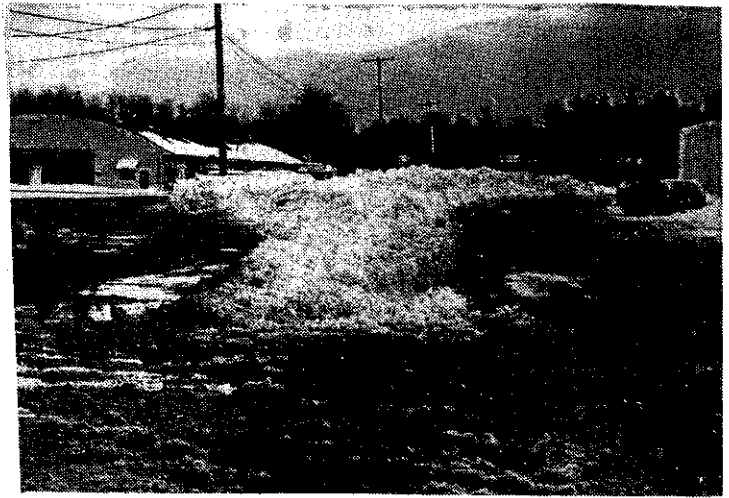
The Delaware Plaza management's solution to its massive snow removal problem last week has merchants in the neighboring stores to the east up in arms. And the City of Albany, which owns the land the snow is piled on, isn't too happy either.

The stores, located in the old bus garage behind Denby's, are not part of the plaza or under the same ownership, but depend on traffic back and forth for much of their business.

"We're all very dependent on people getting in and out of here," said Diane Tangora, owner of Antique Exchange, last week.

But Delaware Plaza's problem is simply one of logistics, replies Kay McCabe of HMC Corp., which manages the plaza. Too much snow and not enough equipment to move it.

"I'm sure they'll move it as soon as they get the opportunity," Ms. McCabe said last week. "There was so much of



A wall of snow divides the merchants in the old bus garage to the east of Delaware Plaza from the plaza itself.

it we just had to push it out of the way."

Pushing the snow behind the plaza would be "time consuming and expensive for us," she said.

Mrs. Tangora said she considered all that simply "excuses." And it's not as if the plaza's owners didn't know they aren't supposed to dump snow on the property, which is the right-of-way for the Albany water line. Last year the city wrote to State Sen. Howard Nolan, one of the owners of the plaza, informing him that the property was to be kept clear.

"If there was an emergency we wouldn't be able to get to it," explained Steve Cowens of the Albany Water Dept. Also, he said, when the snow melts it causes flooding on nearby properties.

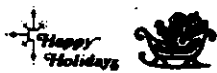
Cowens said Friday he would write another letter to HMC repeating his request. Ms. McCabe was not available for comment Monday.

Last week Ms. McCabe did promise to have a road cut through the wall so cars would not have to drive all the way out to Delaware Ave. to get through. On Monday the wall was breached.

Fitness programs offered

The Albany Jewish Community Center, 340 Whitehall Rd., Albany, will be offering several new programs in January. They are Monday nights for ten weeks, Sunday mornings with instructor Kathy Symansky, and week-day mornings and evenings. For information call 438-6651.

*Best Wishes
for
A Happy
and
Peaceful
Holiday Season*



*Capital Cities
Imported Cars*

Home of the 3 year — 100,000 mile
VW and BMW

Rt. 9W **463-3141** Glenmont

The 
Squire Inn

Wishes All Our Friends & Customers
The Best for the Holidays and the New Year

Town Squire Shopping Center
Route 9W, Glenmont, NY • 436-4256

Your Host, Don Sheldon



Bonnie Appleton

Wins scholarship

Bonnie Appleton, daughter of Mr. and Mrs. F.P. Appleton, 107 Marlboro Rd., Delmar, is the recipient of the \$250 Garden Writers Association of America scholarship. She is working on a PhD degree in horticulture at Oklahoma State University, Stillwater, Okla. She is a graduate of Bethlehem Central High School and has bachelor's and master's degrees in plant science from the University of Delaware. She was an assistant professor of horticulture at St. Louis (Mo.) Community College, Meramec, for five years, and served as garden editor of St. Louis Home and Garden magazine. While attending DSU, she is working as garden editor of Tulsa (Okla.) Home & Garden magazine and as garden writer for a greenhouse and nursery firm in Tulsa.

Form new firm

Three brothers in a well-known Albany family, two of whom now live in Delmar, have formed a law firm with offices at 11 North Pearl St., Albany. Partners in Breslin, Breslin and Breslin are Neil D. Breslin and Michael G. Breslin, both of Delmar, and Thomas A. Breslin. They are sons of Mr. and Mrs. Marsh W. Breslin of Albany.

All three graduated from Vincentian Institute, where each earned All-Albany honors in various sports. All three earned law degrees at the

University of Toledo Law School, and each served as editor-in-chief of the Toledo Law Review.

Neil Breslin is a graduate of Fordham University and has served as president of Arbor House since 1979. Michael Breslin is a graduate of the U.S. Military Academy, West Point, and had 12 years of active duty in the Army that included a tour as an infantry company commander in Viet Nam. He was discharged with the rank of major. He is chairman of the Bethlehem Democratic Committee and a director of Hospitality House. Thomas Breslin is a graduate of Boston College and served as an Albany County public defender and an assistant district attorney before becoming corporation council for the city of Watervliet. He is a trustee of Bishop Maginn High School and a member of the Kenwood Day Care Center board of directors.

In Clarksville, The Spotlight is sold at the Clarksville Supermart.

Curriculum meeting

All parents of Bethlehem Central High School students are invited to join their sons and daughters at a curriculum informational meeting on Tuesday, Jan. 5, at 8 p.m., in the school cafeteria. Guidance counselors and teachers will be present to

answer questions about courses being offered next year.

Curriculum handbooks will be distributed to BCHS students on Jan. 4, and they will be planning their academic programs for 1982-83 during January.

Spotlight classifieds work!

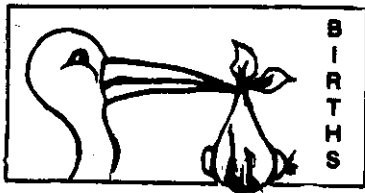
Season's brightest and gayest good wishes to all!
From Alex, JoAnn & Mary
OLOF H. LUNDBERG AGENCY
TUCKER SMITH AGENCY
INSURANCE

Spotlight Customers
SALE — 1 DAY ONLY!
Saturday, December 26, 1981

BRING IN THIS AD AND SAVE
\$2500
 With Purchase of \$300 Or More Off Our
 Already Discounted Prices

BURRICK Furniture Co. 465-5112
560 Delaware Avenue, Albany N.Y.

HOURS: Monday 9 - 5:30
 Tues. thru Fri. 9:00 - 8:00
 Saturday 9:00 - 4:00



BIRTHS

Boy, Matthew, to Mr. and Mrs. John Stim, Glenmont, Dec. 4.

Girl, Sarah, to Mr. and Mrs. Daniel C. Zimmer, Selkirk, Dec. 8.

Car window shattered

A pellet from a BB gun shattered the driver's side window of a car driving on Kenwood Ave. near Ridge Rd. last Monday, according to Bethlehem police reports. There were no injuries and police are investigating.

Births

St. Peter's Hospital

Girl, Elizabeth, to Mr. and Mrs. Paul J. LaFalce, Delmar, Dec. 1.

Boy, John, to Mr. and Mrs. Arthur P. Mosley Jr., Delmar, Dec. 1.



The grand opening of the new Ocean State Sea Food store at the Four Corners in Delmar last week was presided over by Lynda Gavaletz, whose husband is one of the three owners. From left are Bob Sager, treasurer of the Bethlehem Chamber of Commerce; Bethlehem Supervisor Tom Corrigan; and partners Gavaletz, Bob Conklin and Dick Bellaunce. *Spotlight*

BLEAU'S
Towing & Service
 Elm Avenue, Selkirk

NO JOB TOO BIG OR TOO SMALL

Complete Auto & Truck Repairs • Crane Service
 24 Hour Emergency Towing Service
 4 Radio-Dispatched Trucks
CALL US 439-8108

Keep walks clear

Delmar Postmaster Henry Betke has appealed to patrons to give mail carriers "the gift of safety" — walks, drive-ways, steps and porches which are cleared of ice and snow.

"Such action could drastically reduce the number of slips and falls that result in fractured or broken bones, sprains and back ailments for letter carriers and special delivery messengers," he said.

STAR-LITE LOUNGE III
 (Formerly the Center Inn)
 Route 9W, Glenmont 463-8517
 —SPECIALS—
 Thursday, Dec. 24
Southern Fried Chicken \$5.00

Closed Christmas Day
 Saturday, Dec. 26
Surf and Prime Rib \$11.95
Stuffed Shrimp \$6.75

CLOSED SUNDAY
 Monday, Dec. 28
Ham Steak
w/Pineapple Sauce \$5.95
 Tuesday, Dec. 29
Deep Fried Clams \$5.25
 Wednesday, Dec. 30
Veal Parmigiana \$6.50

All above dinners served with soup, antipasto, potato and vegetable, rolls and butter, dessert, coffee
 Lunch 11:30 to 2:30; Dinner 4:30 to 10
 Lounge 11:30 to ?
 THINKING OF HAVING A BANQUET? CHECK OUR PRICES.

TO ALL OUR DEVOTED CUSTOMERS

From Bob Shafer of Tri-Village Fruit Mkt.

I am sorry to announce that we will be closing for renovations January 1st through February 28th.

But we will look forward to serving you when we reopen March 2.

Look for our opening specials.
 Thank you for your patronage.

Tri-Village Fruit Market
65 Delaware Avenue
Delmar

Voorheesville News Notes

Maryann Malark 765-4392

Voorheesville High School students of French and Spanish celebrated Christmas by observing some of the traditions of their respective cultures.

Five Spanish classes under the direction of teacher Robert Streifer made and broke colorful Pinatas which were filled with Christmas surprises. Fifty French club members sampled traditional holiday desserts and sang popular French carols at their annual Christmas party.

On Wednesday, Dec. 16, the senior high concert band, stage band and chorus directed by Francis McDermott and Margaret Dorgan performed at the Empire State Plaza on invitation of the state Office of General Services. The program was presented at the South Gallery on the Concourse Level. Among selections performed were "Don't Get Around Much Anymore," theme from Superman, and selections from "Chorus Line." Highlighting the choral performance was a holiday medley which included "What Child Is This," "Jeanette Isabella," and "Angels We Have Heard On High."

To start budget process

The Voorheesville Board of Education will hold a special meeting on Monday, Jan. 25, at 7:30 p.m. in the library of the junior-senior high school in order to give community residents an opportunity to comment on the annual school budget before a budget is developed.

The board will receive a preliminary draft from Superintendent Werner W. Berglas along with comments from persons attending the meeting. A preliminary budget hearing is scheduled for early April. The annual meeting

will be held Tuesday, May 11, and the budget vote will take place on Wednesday, May 12.

Board President J. August Berger said that budgeting is actually a year-around process, which culminates in the annual budget being drafted for the May meeting. "One of the big factors in the budget 'puzzle' is the state aid picture. We hope that the legislature will do its job and take on a larger share of the burdens," Berger said. Berglas noted that the state has a commitment to aiding 50 percent of the expenses of the school districts in the state, but that actually it is currently only aiding about 39 percent of these costs. This puts a larger burden on the local property tax payer, he said. Interested taxpayers should contact their representatives, Dr. Berglas said. For a sample letter and names and addresses of persons to write, interested residents are invited to call Dr. Berglas at 765-3313.

Past leaders cited

Members of the New Scotland Democratic Social Club paid tribute to two past presidents at Trotta's Restaurant on Dec. 12. Honored were Eileen Farley and Dorothy Hargraves. The awards were president of the club, and Linda Hunter, vice president.

Mailbox broken

A resident of Huntersfield Rd., Delmar, told Bethlehem police Saturday that someone drove over his lawn and knocked down his mailbox. Damage was estimated at \$20.

AL'S BARBER SHOP



AL CAPPETTI, Prop.

34 MAIN STREET
(next to Post Office)

Voorheesville
HOURS

Tues. 8 a.m. to 7 p.m.

Wed., Thurs., Fri.,

8 a.m. to 5:30 p.m.

Saturday 8 a.m. to 3 p.m.

CLOSED MONDAYS

Phone 765-4122

NEW SALEM HEATING INC.

and



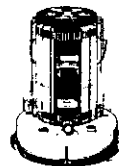
Wish you a Warm and Merry Christmas
Christmas Specials

OMNI — 105

OMNI — 15

Moonlighter

Radiant — 10



\$257.95

\$164.75

\$172.75

\$218.00

Free Can and Kerosene with above
NEW SALEM HEATING INC.

34 Main St., Voorheesville • 765-2655

We Install As Well As We Sell



from **Bill Candido**

and the

V
P
PHARMACY

765-4911 / 765-2314

UNIQUE GIFTS, FINE ANTIQUES HAND MADE CRAFTS

Pottery • Woodenware • Pillows
Stuffed Toys • Hand Dipped Candles • Cards
Tole Ware • Hand Made Carolers and Santas



We Have Unicorns, Owls, Pussycats And Mice Galore

186 MAIN ST., ALTAMONT, NEW YORK
PHONE 861-5539



Christmas Hours

Tues., Wed., Thurs. & Fri. — 10 a.m. - 8 p.m.

Sat. 10 a.m. - 5 p.m., Sun. Noon - 5 p.m.

Lee Kaplan married

Lee Temmi Kaplan, daughter of Milton and Sylvia Kaplan, Euclid Avenue, Elsmere, was married Oct. 25 to Robert Laurence Zweibel, son of Joseph and Shirley Zweibel of Glen Rock, N.J., at Temple Avoda, Fair Lawn, N.J. Rabbi Selig Salkowitz performed the ceremony.

Beverly Epstein of Boston, Mass., cousin of the bride, was the maid of honor. The best man was the brother of the groom, Richard Zweibel of Fair Lawn.

The reception was held at the Patrician Caterers in



Mrs. and Mr. Robert Zweibel

Livingston, N.J. The bride is a 1973 graduate of Bethlehem Central High School and a 1977 graduate of Pratt Institute in Brooklyn. She is an assistant pattern maker at Prive Sportswear, Inc. in New York City. Her husband is a 1973 graduate of Princeton University and is a senior creditor consultant with Prudential Insurance Co. in Newark, N.J.

The couple spent their honeymoon in Aruba and make their home in Lake Hiawatha, N.J.

Wayne Keezer married

Elizabeth Gail Watkins, daughter of Mrs. Sylvia Watkins of Lindale, Tex., and Jim Watkins of Texas, and Wayne L. Keezer, son of Mrs. Benjamin G. Keezer and the late Benjamin Keezer of 229 Elm Ave., Delmar, were married Nov. 21 in Virginia Beach, Va.

The ceremony at the Virginia United Methodist Church was conducted by Pastor Robert Cofield.

The bride was given in marriage by her brother, Dennis Watkins. Her sister, Heather Watkins, was maid of honor. The best man was David Bauer and the groomsmen were Manuel Gomez.

A reception followed at the home of Mrs. Terry Daggett, cousin of the groom.

Mrs. Keezer attended schools in Texas and is pre-

sently serving in the U.S. Navy at Virginia Beach. Her husband is a 1976 graduate of Bethlehem Central High School and served in the Navy until 1980. He is employed as a mechanic for Hanna Landscaping in Virginia Beach.

Elks scholarship program

The 1981-82 scholarship competitions sponsored by the Elks National Foundation and the New York State Elks have been announced by Joseph Pomakoy, exalted ruler of Bethlehem Lodge 2232.

The foundation's "most valuable student" scholarship leadership awards, open to all New York State high school seniors, total 58 scholarships ranging in value from \$900 to \$5,000. The state association will give 38 scholarship awards for \$700 each to high school seniors or college students (up to junior year) whose father is, or was at the time of his death, a member of the Order of Elks.

Applications for both awards are available at the Bethlehem lodge on Rt. 144 in Selkirk or by contacting Robert J. Hausmann, 439-9588.

VA retirees speaker

Edward Zacharek, chief of medical administration service, will be the speaker at the Dec. 28 meeting of the VA Medical Center Retirees Association. The group meets at 1 p.m. at the hospital.

Karen's Korner
 417 Kenwood Ave, Delmar
 Behind Sporthaven Lanes
Wishes a Happy Holiday Season to All Our Friends!
 WE WILL BE CLOSED DEC. 24, 25 & 26
439-5050

GREETINGS

Hope you enjoy the holidays as much as we enjoy serving you!

Closed Christmas Day & New Year's Day

BROCKLEY'S DELMAR TAVERN
 4 Corners, Delmar • 439-9810

HAPPY HOLIDAYS

from
GOCHEE'S GARAGE
 and
GOCHEE'S AUTO SALES

DELAWARE AVENUE, DELMAR
439-9971 **439-5333**



**Mrs. Robert S. Stegemann
Eileen Craig married**

Eileen Elizabeth Craig and Robert Scott Stegemann were married Nov. 14 at the Union College Chapel in Schenectady. The ceremony was performed by Rev. Erwin Schweigardt.

A reception was held at the Albany Country Club in Voorheesville immediately following the ceremony.

The bride's sister, Rosemary Craig, of Philadelphia, Pa., was the maid of honor. Philip Stegemann, of Buffalo, the groom's brother, was best man.

The bride's other attendants were her other two sisters, Cynthia Dutoit of Oceanport, N.J., and Ginger Mountain of Ashby, Mass., and the groom's sister, Lisa Jolley of Santa Barbara, Calif. Jessica Dutoit, her

niece, was the flower girl.

Other attendants for the groom were his two brothers, Thomas Stegemann of Philadelphia and Peter Stegemann of Schenectady. Trip Hargrave of Boston also was an attendant.

Mrs. Stegemann is a graduate of Bethlehem Central High School and has a degree in environmental science and forestry from the State University at Syracuse and Syracuse University. Her husband is employed by the Tug Hill Commission.

After a honeymoon in Florida, the couple is living in Dexter, N.Y.

Top GOP woman chosen

Mrs. Dorothy Alliger of Delmar has been elected president of the Albany County Women's Republican Club for 1982. The installation took place during the club's recent Christmas brunch at the Normanside Country Club.

Eastern Star installation

The Onesquethaw Chapter Order of the Eastern Star, will hold its installation of 1982 officers Wednesday, Jan. 6, at 8 p.m. at the Masonic Temple on Kenwood Avenue, Delmar.

Patricia and Gerald Irwin will be named matron and patron of honor by Alan Lewis, who is past grand patron. Other offices will also be filled. The public is invited.

We'll make your motor sing

- Engine Tune-up
- Front End Alignment
- Automatic Transmission Service
- Modern Equipment
- Skilled Mechanics

BAILEY'S GARAGE

Oakwood Road, Elsmere
Phone 439-1446

1/2 PRICE SALE

All Christmas Merchandise

**Starts
Dec. 26th 8:30 am
239 Delaware Avenue
439-8166**



Mobil NEW SCOTLAND MOBIL SERVICE CENTER INC.

(FORMERLY WHITEHALL MOBIL)

TIRE & BATTERY SALE

**Call or Stop in
and Ask About Our
LOW, LOW Prices**

**15 Minute Express Lube
and 9 Point Car Service**

**Towing - Road Service
General Repairs
N.Y.S. Inspection**

**247 New Scotland Ave.
Phone 438-1671**

**MERRY CHRISTMAS
& HAPPY NEW YEAR**

from

**BUCHEIMS
CLEANERS**

**The House of Better Dry Cleaning
432 CENTRAL AVE., ALBANY**



On New Scotland Rd. in New Salem
15 minutes from Albany

**NEW YEARS EVE
OPEN HOUSE**

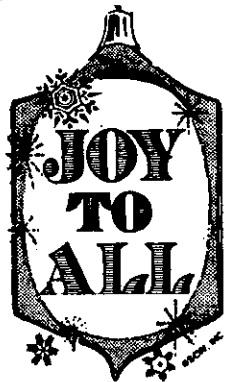
Music By **POWER ELITE**

Hats, Balloons, Noisemakers Reservations Accepted

HOT AND COLD BUFFET OPTIONAL

\$5.95 Includes coffee for the road
CALL 765-4426

Saturday Night — Country & Western Music
Complete Dinner Menu including Salad Bar — Thurs. thru Sun.



Thanks for
Your Continued
Support

Donnelly SHOES

Mon.-Fri. 10 to 9, Sat. 10 to 6 Delaware Plaza • 439-6106

THE NEW SKI WINDHAM
WORLD CLASS SNOW

LESS THAN 1 HOUR FROM THE TRI-VILLAGE AREA

**NEW FOR THE
1981/82 SEASON**

- NEW Top to bottom snowmaking on 90% of the area
- NEW Expanded lift capacity
- NEW Redesigned and widened trails
- NEW Beginners slope with its own new J Bar
- NEW Fully equipped, professionally staffed children's ski school and nursery
- NEW Expanded Ski Rental Department
- NEW Parking
- NEW NASTAR Racing

RT 23 WINDHAM, N.Y.

20 Minutes West of Thruway Exit 21

For Up-To-Date Snow Information,

Call Toll Free In NY State

800-342-5111

SPOTLIGHT SPECIAL

Elections problem for smallest town

Sparsely populated and rarely visited, the Town of Montague faces some problems shared by other municipalities while playing its own numbers game.

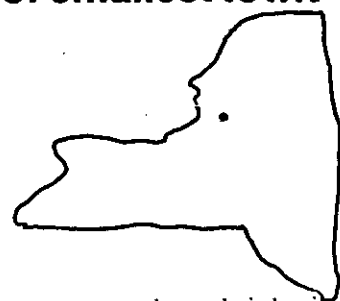
Located in the core of the Tug Hill region in western Lewis County, officials of this wooded township, roughly the same size as Bethlehem and New Scotland, almost outnumber the rest of the populace. The town's population of 32 in the 1980 census was reduced by 3 percent recently when one resident died.

"It's sad in a way," says Supervisor Nancy Gillespie, one of six residents of Rector, the town's most populated center. "We just don't have enough people to run for the offices and our tax revenue suffers."

Of the population residing in the township on a year-round basis, Mrs. Gillespie says a supervisor, clerk, highway superintendent, three council members and three assessors must be found. The town is one of five in the spacious Tug Hill wilderness that supports an intermunicipal agreement that allows its zoning officer to reside in a neighboring town.

Composed mostly of retired persons, Montague's residents live the way they want along the one paved road that loops through the scenic hinterland of the Tug Hill region. Residents rarely complain of the 350 inches of snow each winter, nor are they distressed at driving to Adams Center or Barnes Corners, the nearest communities, for supplies.

During the snow season, often October to May, people in Montague "catch up on the sewing and mending and experiment with a few recipes," says life-long resident Cecil Goutermout, Sears Pond. Snow and blowing snow does not halt all activities in the town, as residents venture out from buried



homes to go about their business.

The Lowville Academy school bus, equipped with two-way radio and an emergency food supply, winds along Sears Pond Rd. daily. Although much of Montague's population is retired, enough school-age youngsters live along the loop to necessitate the 40-mile round-trip by the bus.

But beyond its isolation and lack of people, Montague faces financial problems like any New York township. Mrs. Gillespie would like to see the town's \$73.55 per \$1,000 assessed value tax rate decline or at least stabilize. The town has been told by New York State to allow people to cut firewood from the 16,500 acres in Montague that are owned by the state, but the town never sees any financial rewards from the intrusion.

"We get hurt by the lack of taxes, too," says the supervisor. "We have almost 300 property owners, but only a handful of them are full-time residents."

The Temporary State Commission on Tug Hill shows 85 percent of the property owners in New York's least populated town are non-residents. The land-use survey also reveals almost 40 percent of the acreage is under state management and is consequently off the town tax rolls.

Montague's annual \$45,000 budget allows government officials to make ends meet, but it is not an easy task, Mrs. Gillespie concedes. Almost half of the general account is allotted for the highway department, which boasts a fleet of three trucks. The town has

no sewer or water systems, thus no income from those urban-oriented sources.

Mrs. Gillespie notes \$7,000 of the highway department's \$22,000 annual allotment is used for plowing the 35 miles of dirt roads kept open during the winter. The three-member highway crew operates two town plows and a dump truck to combat drifts that often top telephone lines. The lone paved road is maintained by the Lewis County Highway Department, which must bring in rotary scoops to remove snow deposited by the squalls that daily move off Lake Ontario from the west.

In the days of yore, flourishing logging communities like Hooker, Parkers Corners and Liberty were the center of life in the town that boasted a population of 975 a century ago. The wooded plateau, where three rivers rise and flow in three separate directions, was cut extensively in the early 1900s and as the

trees were thinned, so was the population.

Because of the severity of the winter and the unfertile soil, farming was always a risky venture in Montague. Those who braved the drawbacks of Northern New York's largest industry found milk hauling trucks unwilling to stray off the heavily traveled roads to pick up insignificant amounts of fluid milk.

Hunting, fishing and snowmobiling attract outdoor enthusiasts to the barren land, but give no cause for local residents to derive incomes from the seasonal influxes. A lone tavern sits at the crossroads in Rector and attracts recreationists to its warm hearth and frontier decor. Its owner, wisely, closes during the week in summer and winter when there is little chance of anyone stopping by for a drink or bowl of soup on their way somewhere.

Today, town officials face the task of keeping financial pace with New York's other

929 towns, while retaining the way of life residents prefer. The issues, tackled in the comfortable living room of the Goutermout home, rarely attract anyone except council members. Yet their decisions

will have impact on the few who live in New York's least populated township.

*Larry Boynton
Larry Boynton is a staff
writer on the Watertown
Daily Times.*

WE'RE COMMITTED

At Southwood Health Club we're committed to help you trim down and shape up for the New Year. We offer:

- **Specialized exercise programs**
Sauna • Whirlpool •
- **Complete privacy.** Bring a friend along for a **free trial** visit. We're just 5 minutes from downtown Albany.



Southwood Tennis & Health Club

Route 9W and Southern Blvd. behind Howard Johnson's.
(Thruway Exit 23). Call 465-1009.

D.L. MOVERS

439-5210
PRIDE IN
MOVING
24
YRS.

Long
Distance

FREE
Estimates

230 Delaware Ave.
Delmar, NY

Dick Leonardo, Pres.

Icc Mc 87113



The DOWN TUBE CYCLE SHOP

YEAR END SALE
15% OFF

Every Bike Every Accessory
FUJI • UNIVEGA • KHS

466 MADISON AVENUE, ALBANY
434-1711

we want to take this opportunity
to wish each of you a
blessed
&
happy holiday season

the store will close
at 4:00 p.m.
christmas eve

bring in the new year
looking great
we carry a full line of dresswear
for men and women

no exchanges after january 8th

thank you

the **Clothes Circuit**

Town Squire Plaza Glenmont, New York

VOLLEYBALL

BC spikers win Sectional crown

The 1981 Suburban Council volleyball crown had still not found an owner by the start of last week. The Shaker Bisons easily assured themselves a share of it for the second consecutive year by defeating Niskayuna.

Bethlehem coach Carol Walts and her come-from-behind varsity girls had an upward battle to fight. Their task was formidable: to defeat Shenendehowa, the team that had upset the Eagles in

two straight games in the Suburban Council tournament and which was undefeated until the previous week.

BC seemed a different team in its season curtain. The cautious Eagles dropped the first game to Shenendehowa, 15-9, but the urgency of their plight spurred them, to sweep the next two games, 15-12 and 15-12. With Laurie Weinert back and their erratic serving stabilized, the

girls finished their season 9-1, which was good enough to make them co-champions with Shaker for a second year.

After Monday's euphoria, BC traveled to Ballston Spa Friday to salvage the Section 2 title they brought home last year. The Eagles were seeded second at the tourney's start since rival Shaker had trimmed them in regular season play. Of the six other participating teams, three were from the Suburban Council.

In the round-robin elimination, Bethlehem was assigned to one pool of four teams while Shaker was ruler of the other quartet. In its opener, BC finished off Amsterdam in two games and then played to a disappointing split with Colonie and Albany High. Forced to play a one-game decider to break the three-way tie, BC came through to defeat Colonie, 15-1.

In Saturday's semifinals, Bethlehem set their 1981 record against Shenendehowa at 2-1 by downing the Plainsmen, 15-12 and 15-7. Ahead loomed Shaker, which had beaten Albany High and then had a home-court advantage for the finals. In the showdown, the relentless Eagles played unerring volleyball to crush Shaker, 15-5 and 15-8. The defensive Blue Bison dragged out some

rallies for several minutes, but in the end lost the section title to BC for the second straight year.

"We were really on our best game Saturday," said Walts. "Hannah (Lamitie) and Laurie set the ball perfectly, while Jackie's (Cozzy) defense was consistent. Sandy Shelmerdine and Alunda Smith kept our offense up, and Ann Howell got her serving game under control."

Coach Nancy Smith and squad finished the year undefeated at 10-0, putting BC in sole possession of first place at the JV level.

Julie Ann Sosa

Honors for Gleason

Craig Gleason, a St. Lawrence University junior from Voorheesville whose photo with former Vice President Walter Mondale appeared in *The Spotlight* last week, has been selected captain of the 1982 SLU football team and president of the Sigma Pi fraternity. The son of Walter and Andrea Gleason, 56 Altamont Rd., he is a 6-foot-3, 225-pound tight end who played varsity football at Voorheesville for three years and scored the winning touchdown in the first Class C Sectional championship game in 1978. In high school he also was president of the student council and captain of the basketball team.

**CHRISTMAS EVE AT
DELMAR
REFORMED CHURCH**
(at Four Corners)

7 P.M. Family Candlelight Service
Nursery Care Provided
11 P.M. Traditional Candlelight Service
ALL WELCOME!

Robert A. Hess Minister
Carol Shaw Organist & Choir Director

**CONVENIENT
FOOD MARKET**
834 Kenwood Ave.
Slingerlands

- Groceries
- Soda
- Beer
- Snacks

*We Will Be Open
ALL DAY
Christmas
And New Years*

**WISHING YOU
HAPPY
HOLIDAYS!**

**DRAFTY WINDOWS
A PROBLEM IN YOUR HOME?**



KASCO
**MANUFACTURERS OF
QUALITY ALUMINUM
PRODUCTS**

THERMAL BARRIER

**YOU CAN HELP
SAVE
ENERGY**

with the NEW

- DOUBLE HUNG
- ROLLING WINDOWS
- PATIO DOORS

Call Us For A FREE Home Demonstration of The POINT ONE WINDOW - The Most Energy Efficient Storm Window Available Today.

CAMPS ALUMINUM, INC.
63 SOUTHERN BLVD. REAR ALBANY, N.Y.
PHONE: 434-3500

We Cover Over A 50 Mile Radius
*All Storm Windows And Doors Are Architect Approved

SWIMMING

Weights pay off for BC natators

When rival swimming coaches express wonder as to how Bethlehem Central's young swimmers get such strong muscles, BC Coach Jack Whipple gives them the formula: plenty of weight training.

"The boys spend many of their off-hours on weight lifting and physical fitness," says Whipple proudly. "They average six, seven hours a week at Nautilus on their own, the whole team. They're getting very strong and muscular and that's one of the major reasons for our success."

Whipple's pride is exceeded only by that of the boys themselves. "They're proud of their record and their physical condition, and they're willing to put in the hard work because they see it pays off. They also have picked up a sizeable following in the community. Many of the people who go to Nautilus have been impressed with how hard the kids work, and they've taken an interest in them and follow their progress in the meets."

The team had only one meet last week, a 57-26 devastation of Troy High. The exercise at Albany Academy Wednesday was a casualty of the snowstorm. A pre-Christmas trip to Queensbury was on for Tuesday, and then it's just practice in the pool every day except Dec. 25 and Jan. 1, and three days a week on the weights.

Whipple used the Troy meet as a chance to test some of his operatives in different strokes. "It turned out quite well," he said.

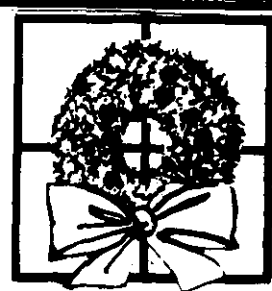
That may have been the understatement of the month. With a number of his boys swimming in events other than their specialties, the Eagles swept 10 first places before dropping the final event, the 400-yard free relay into which Whipple sent several of his backup swimmers.

Meanwhile, ninth-grader Matt Holland filled in for John Demarest, the league's top sprinter who was ill, on the anchor leg of the medley relay and helped turn in the fastest time in Section 2 this season, a sparkling 1:50. Jay Henahan did the backstroke, Doug Schulz the breaststroke and John Reagan the fly.

Schulz, a sophomore, also won the 200 IM in the Section's fastest of the season, 2:10.4, and Reagan won the 50 and 100 sprints with ease. His 50 time of 23.9 was the section's first under 24 seconds this year.

John Henahan, a junior long overshadowed by his 12th grade brother, Jay, the area's top swimmer, won the 500 in 5:39.8. "He looked very strong," said Whipple. "He's coming along extremely well."

Spotlight classifieds work!



SEASONS GREETINGS

from
Forget-Me-Not

135 Adams Street
439-1244

 **Whirlpool**
factory
service

APPLIANCE SERVICE CO.

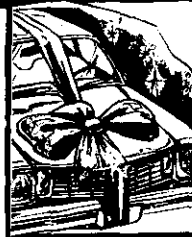
439-9705

A Division of
Mr. Macs Appliance, Inc.

BILL McGARRY

Ted, Ed and Cliff
at

CEDAR HILL GARAGE



Wish
Season's Greetings
to all

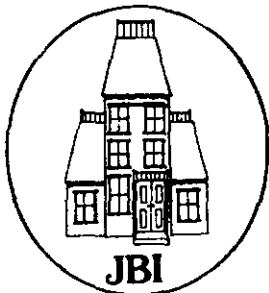
Our 30 years of continued sales and service of Chrysler — Plymouth new and used cars is due to your patronage

We still have 3 1981 leftover cars in stock for immediate delivery!

Call Ted for the deal that will start your year off right . . .

CEDAR HILL GARAGE
Rt. 144, Selkirk, N.Y. 767-3069

Josette Blackmore Interiors



Happy Holidays

*We will be closed the weeks of
December 21st and December 28, 1981.*

414 Kenwood Ave., Delmar 439-3775

Wellspring

FOR YOU OR SOMEONE CLOSE TO YOU

*A New 90-Apartment Complex
Meeting The Needs of the Elderly*

- 24 Hour Security • 3 Meals Daily
- Maid Services • Transportation
- Activities

An alternative for those who desire to maintain their independence and can do so with the services Wellspring offers. A non-health related facility offering so much. Luxury apartments on six wooded acres.

**PHONE OR VISIT TODAY
NO WAITING LIST**

- COMFORTABLE
- PRIVATE
- CAREFREE
- AFFORDABLE
- SAFE

869-0211

Located in a beautiful country setting
Washington Avenue Extension
Albany, New York 12203
(between Fuller Rd. & Rt. 155)



Wellspring
HOUSE of ALBANY

BASKETBALL

Blackbirds facing 5 road tests

For Chuck Abba and his Voorheesville, basketball team, the next three weeks will be the moment of truth. Following a Monday night makeup date at Ravena this week, the Blackbirds will play in the Helderberg Holiday Classic at Guilderland next Tuesday and Wednesday; then travel to Mechanicville and Lansingburgh before their next home game.

And that one is with Water-vliet on Jan. 12, which means that the 'Birds will be tangling with three of the toughest teams in the Colonial Council in the space of eight days. At the moment, however, Voorheesville is in the thick of the race, thanks to a solid 64-47 thrashing of Cohoes last week and a Schalmont loss.

"If we can win three of these five road games, I'll be happy, and if we can take four I'll be ecstatic," said Abba. "The kids did a nice job against Cohoes, and played another fine game defensively. Even though our lead got down to 12 points near the end of the third quarter, I never really felt comfortable against a team like Cohoes. We got most of our points from our big men up front, but our guards put a lot of pressure on the ball, and that

helped us quite a bit."

Mike Lewis, one of the premier point-makers in the region, fired in 18 points, Paul Probst had 16 and John Zongrone, the lanky sophomore had 13. Abba's scrappy guards, various combinations of Dave Haaf, Adam Nendza and Dickie Lennon, heckled the Cohoes ball handlers while the Blackbirds moved to an 11-point lead at halftime. When Probst and Lewis clicked off eight straight points at the start of the third quarter, the score went to 41-22.

This week's trip to Ravena is a makeup caused by last week's snowstorm. In the Guilderland tournament next Tuesday and Wednesday, the Blackbirds will play the second game (8:30) of the doubleheaders both nights, hooking up with Bethlehem Dec. 29 and Guilderland Dec. 30.

Local cager stars

Kris Attarian of Glenmont scored 18 points for the St. John Fisher College basketball team in a 77-71 loss to the Community College of the Finger Lakes on Dec. 9, according to a news release by the Rochester college.

PEOPLE PLEASERS

CLEAN, SHARP CARS TO SUIT YOUR BUDGET



'79 HONDA ACCORD LX \$5795
Auto, silver. Ex. Cond.

'78 DATSUN PICKUP \$4495
4 speed, long bed, yellow.

'78 PLY. HORIZON \$3295
White, 4 speed. Ex. Cond.

'76 FIAT 128 \$1995
2 Door, red, 4 speed.

DELMAR HONDA

266 Delaware Ave., Delmar, N.Y.

439-8151

Greetings



Warm wishes for a fine holiday season!

DAVE'S GLASS CO.

154-B Delaware Ave. (behind Denby's) • 439-7142



Winners of the Daughters of the American Revolution Good Citizen awards were honored recently at the Doane Stuart School. From left, Scott. M. Zielonko of Watervliet; Theresa Becker, a student at Berne-Knox-Westerlo High School; Stacey Ann Henderson of Delmar, a student at the Academy of Holy Names; and Jonathan J. Propp of Delmar, a student at Bethlehem Central High School. Zielonko won the Gansevoort Chapter's award; the others were honored by the Tawasentha Chapter.

Spotlight

Winter rules at park

The town of Bethlehem's Elm Ave. Park is ready for winter sports enthusiasts. Town residents who wish to use the park are asked to observe the following rules:

Snowmobiling is permitted

in the area south of the park's maintenance roads only. Snowmobilers should avoid the baseball backstops and should use the park only when snow cover permits.

Cross-country ski trails are in the area to the north of the

maintenance road, beginning at the tennis courts. Skiers should avoid the park's arbor-etum, which is near the park's picnic pavilion.

Skaters can check on the ice condition by calling the park office (439-4131) or by checking the flags at the park.

TRI-VILLAGE DRUGS

340 Delaware Ave., Delmar 439-1369

**ALL CHRISTMAS
MERCHANDISE**

1/2 OFF

STARTING SAT., DEC. 26

Mon.-Fri. 9-9, Sat. 9-6, Sun. 8:30-1

Happy Holidays!

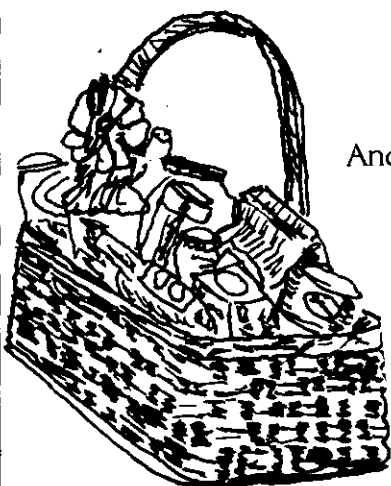


Southwood Tennis & Health Club

Route 9W and Southern Blvd. behind Howard Johnsons.
Tennis Club 436-0838 (Thruway Exit 23) Health Club 465-1009

*Great gift ideas
for that last
minute shopper*

*For the food lover in your life
the perfect gift. A food basket
The possibilities are unlimited*



Elegant Catering
Prepared Meals
To Go

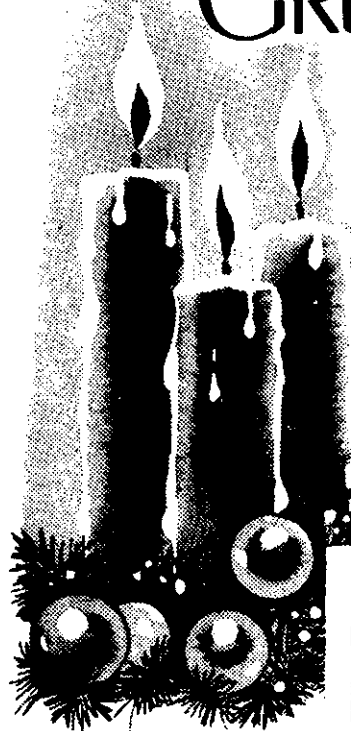
And Much, Much More...

Open 7 days a week
340 Hamilton Street
Albany, NY 12210
463-6223

the unlimited feast inc.

GREETINGS

*With joy in our
hearts, let's
light up the
world with the
strength of our
kindness and
caring.*



**New Salem
Garage** 
INC.

**NEW SALEM, N.Y.
765-2702**

Year End Warehouse Sale at Wholesale Prices



- Fireplace Inserts
- Freestanding Stoves
wood and coal burning
- Kerosene Heaters
- Furnaces and Boilers
wood and coal burning
- Stove Accessories



**Worcester
Chimney Brushes**

**Chimtex
Fire Extinguishers**

**Chim Guard
Magnetic Thermometers**

TIMBERLINE — ALASKA KODIAK
TAYLOR BROS. — FRANCO BELGE

Starkweather Stoves, Inc.
Rt 9W Glenmont

8 to 5 Daily
8 to 12 Saturday

439-3323

*Best Wishes
for a
Happy Holiday
Season
from the staff
at
Betty Lent Realty USA*



"Serving you a better way"
208 Delaware Ave.
Delmar
439-9336

BASKETBALL

Defense keeps BC undefeated

Bethlehem Central's varsity basketball team is assaulting the hoops at a rate of 70.3 points per game, but Coach Jim Tedisco feels his defense is largely responsible for the Eagles' perch atop the Suburban Council.

That precarious position was bolstered by a workmanlike rout of Columbia Friday night, BC's third straight, all at home. A Tuesday date at Niskayuna was snowed out.

In last week's outing, the Eagles took command at the outset and won going away, 68-45. They led by 28-16 at the locker room break, and the rest was routine.

"We've been playing a tough zone defense," analyzed Tedisco. "We've been keeping the ball from getting to their big men on the inside, and we're getting hands up close on the outside, which puts pressure on their shooting."

With all that arm waving, the Eagles managed to stay relatively clear of traffic violations. Columbia had only five free throws all evening.

The important production came from Bethlehem's big men. Steve Gillespie had 23 points and 10 rebounds, Tom Burdick 14 points and 12 rebounds, and Pete Gillespie 13 and 11. Tom Dexter and Dirk Farrow did the feeding.

Dexter contributing seven points and seven assists.

The Eagles were staying home again this week, facing second-place Burnt Hills Wednesday night. Over the holidays they will play their two allotted non-league games, starting with a Dec. 29 date with Voorheesville in the two-night Helderberg Holiday Classic at Guilderland. Tip-off for that one is 8:30, and it could be a rugged test. The Blackbirds were 5-1 with one game to go, 3-1 in the area's strongest "small school" league, and have a tall, experienced front line with established scorers. The Eagles play Berne-Knox in the 6:30 pairing the following night.

Certified operators

Two Bethlehem police officers, Christopher Bowditch and Michael McMillen, have received certification that they completed the emergency vehicle operators course conducted by the State Police last September.

Vacation tennis camp

Southwood Tennis Club will hold a tennis day camp for juniors for four days next week, Monday through Thursday, Dec. 28-31. Scott Christensen, club pro, will conduct the sessions for beginners from 10:30 a.m. to noon, and for advance beginners and intermediates from 12:30 to 2 p.m. For information, call 436-0838.

In Feura Bush, The Spotlight is sold at Houghtaling's Market.

**Best Wishes for
the Holiday Season
from The Vacuum
Cleaner Specialists**

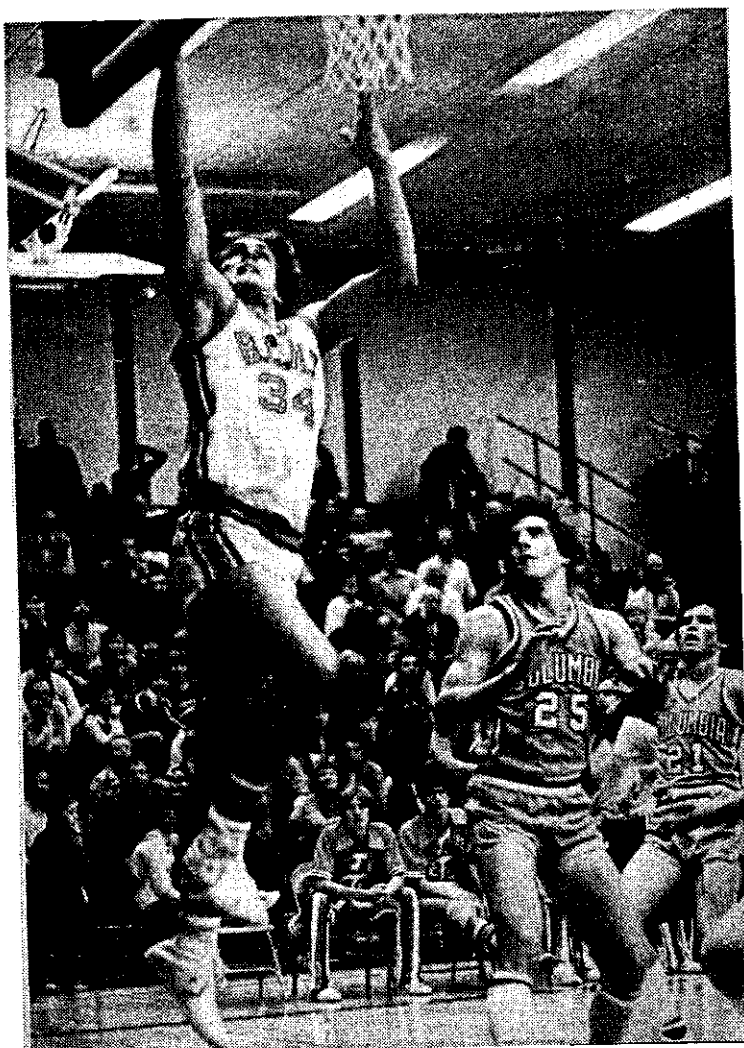
a family business for 3 generations



**LEXINGTON
vacuum**

482-4427

562 Central Ave., Albany
Closed Sunday and Monday



Steve Gillespie (34) makes sure Bethlehem stays ahead of Columbia. R.H. Davis

Jewelry missing

A piece of jewelry, just purchased for \$325, turned up missing from a house on Elm

Ave., Delmar, Saturday, according to Bethlehem police reports. An investigation is under way.

Happy New Year!

STONEWELL LIQUOR & WINE

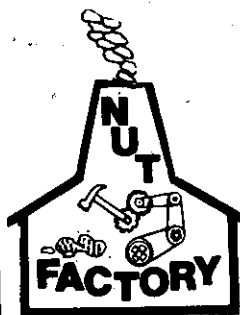
Stonewell Plaza,
Slingerlands



Let us help you make your New Year's Eve party one to remember

Complete Selection of Wines and Liquors for All Your Holiday Needs

GENE JAGARESKI



99 Delaware Ave.
(next to Albany Public)

NUTS ROASTED FRESH DAILY

Salt Free Nuts!

Homemade Fudge
Handdipped Chocolates

NEW YEAR SPECIALS!

World's Largest Cashews

\$6⁹⁹

LB. Reg. \$9⁵⁹



CASHEW COMBO

\$3⁹⁹

LB. Reg. \$5²⁹

offer valid 12/24/81 to 1/1/82



THIS WEEK'S HIGH SCHOOL SPORTS SCHEDULE AT BETHLEHEM CENTRAL

Tues Dec 29 Indoor track at Union, 1:30 p.m.

Tues & Wed Dec 29 & 30 Basketball, Helderberg Tournament at Guilderland



Publishers of The Spotlight

Newsgraphics Printers
of Delmar, Inc.

125 Adams St., Delmar NY 12054 439-4949

Holiday Award Winning Restaurant

Quince's
Stone Ends

Early Bird Dinner

- Filet of Sole Veronique \$5.95
- One Double Thick Pork Chop \$5.95
- Sauteed Chicken in garlic and wine \$5.50
- Brochett of Filet Mignon,
green peppers, onions and
tomatoes marinated \$7.25

Served 5-6:30 p.m.
Monday thru Saturday

Ray Lamare

at the piano

Tuesday thru Saturday 8 - 1 a.m.

— 465-3178 —

THRUWAY EXIT 23—RTE. 9W GLENMONT

UNIQUELY WEEKLY

Subscribe to

The Spotlight

for professional news coverage
of Delmar, Slingerlands, Voorheesville, Glenmont
and nearby communities.

\$7.50 a year—\$13.50 two years

(within Albany County—elsewhere \$9.00 a year)

THE SPOTLIGHT, 125 Adams St., Delmar, NY 12054

Please enter my renewal subscription to The Spotlight

I enclose \$7.50 for one year \$13.50 for two years
 \$9.00 outside Albany County

NAME _____

STREET _____

P.O. _____ ZIP _____

SWIMMING

Kathy's pool debut Jan. 6

Voorheesville-Guilderland's merged swim team was facing two more meets this week without Kathy Riley, a versatile freestyler who up to last weekend was able to log a total of only nine of the required 13 practice sessions to become eligible for the varsity.

That meant Coach Nadine Bassler's understaffed contingent had to host Burnt Hills Monday and travel to Albany Academy Tuesday without the Guilderland senior whose school superintendent granted her belated approval to join the boys' team in the Adirondack swim league.

The Mergers yielded a 45-35 decision at Amsterdam Friday despite four firsts. Dirk Applegate won the butterfly, Chris Martin and Carl Renshaw finished 1-2 in the backstroke, Ricky Bult won the 500 and Kevin Anderson took the 100 freestyle by a touch. But with only eight swimmers, including two eighth graders and no divers, Bassler hasn't enough bodies to fill out a full card. At Amsterdam she juggled the relays around in order to strengthen the final relay by using Dirk Applegate, but the maneuver didn't work. The Mergers lost both the opening medley relay and the 400 free, the event that cost them victories in two meets the previous week.

"Each time I have to decide where to give up points," groaned Bassler. "We have outstanding swimmers, but not enough of them. Kathy

will be a big help, but we won't have her until after the holidays."

That means that Riley's varsity debut will be on Jan. 6 at Troy. After that, there will be 13 more meets on the V-G schedule, not counting the post-season scrambles.

Idea is rewarded

Mrs. Kristen L. Bliven of Selkirk was recently presented an official letter of commendation by State Taxation and Finance Commissioner James Tully, Jr. for a suggestion that accelerated the processing of quarterly wage records. Mrs. Bliven's suggestion, which was implemented by the state in 1979, has resulted in an estimated savings of more than \$74,000 in its first year, according to Tully.

Mrs. Bliven, who is a senior data entry machine operator in the tax department, received a \$7,360 award, the largest state employee suggestion prize given in more than three years.

Elsmere is meeting site

The Bethlehem Central Board of Education will hold its next regular meeting on Wednesday, Jan. 6, at the Elsmere Elementary School on Delaware Avenue. Besides conducting regular business, the board will hear an informational report from Music Supervisor Sam Bozzella and conduct the first budget hearing session for next year's school budget. All residents of the School District are invited to attend.

For Nursing Care in Your Home RELY ON US!



**Medical
Personnel
Pool**

MEDICAL PERSONNEL POOLSM

MPPSM provides experienced home health care professionals — from live-in companions to Registered Nurses.

Call us 7 days a week, 24 hours a day for home health care you can rely on.

463-2171
90 State Street

Employment opportunities available — E.O.E. M/F



Magician Peter Monticup mystifies his young audience from the Tri Village Nursery at the United Methodist Church in Delmar. At the Christmas show last week were, from left, Gregg Sagendorph, Cory Sagendorph, Joey D'Angelo, Bryan Berry, Becky Sievert and Jessica Blette.

W.A. Campbell

Reunion night

Saturday is the night for graduates of Bethlehem Central High School. There are three reunions that night, including a special "two for one" deal. Here's the line-up:

- Class of 1971 is holding its 10th reunion at the Turf Inn on Wolf Rd., Colonie.

The event starts at 6:30 p.m., includes dinner and dancing, and tickets are \$16.50 per person. Contact Scott Gill for information at 456-1619 (home) or 472-9183 (work).

- Class of 1976 is holding its fifth reunion at the Americana Inn, Albany-Shaker Rd., Colonie, starting at 8 p.m. There will be dinner and

dancing to a live band at \$15 per person. Contact Jean Fitzpatrick, 439-7520, or Sharon Leslie, 438-0473.

- All classes from 1965 through 1981 are invited to Christmas Reunion II at the new Hilton Hotel, State and Lodge Sts., Albany. The omnibus party is from 9 p.m. to 2 a.m., and the \$5 per person ticket includes two

complimentary drinks and dancing to a live band. Contact Ann Ellery, 439-6804, or Drew Maggard, 439-5411.

Those attending the Class of 1971 and 1976 reunions that evening will be admitted free to Christmas Reunion II at the Hilton on presentation of ticket stubs or stamps at the door.

Seasons Greetings and Best Wishes for the New Year

The Folks At
**Andrianos I &
Giuseppi's Restaurant**

Call the
Tax Shelter Experts
on 370-8488
for full information about —

**KEOGH & IRA ACCOUNTS
DEFINED BENEFIT KEOGHS
SIMPLIFIED EMPLOYEE
PENSION PLANS
CORPORATE PLANS**

 **Schenectady
Savings Bank**
your Northeast Bank for Savings

Member FSLIC

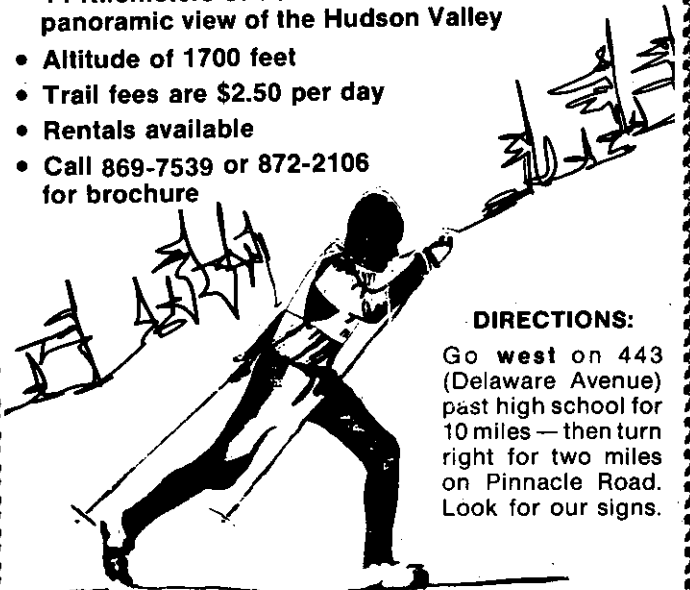
Glenmont Plaza
Route 9W
Glenmont — 370-8488

Bring a picnic lunch and
be our guest in our warming room

**HELDERBERG MOUNTAIN
CROSS COUNTRY SKIING AT
HELDERBERG FAMILY CAMPGROUND**



- 14 Kilometers of trails with a panoramic view of the Hudson Valley
- Altitude of 1700 feet
- Trail fees are \$2.50 per day
- Rentals available
- Call 869-7539 or 872-2106 for brochure



DIRECTIONS:

Go west on 443 (Delaware Avenue) past high school for 10 miles — then turn right for two miles on Pinnacle Road. Look for our signs.

OPEN EVERYDAY DEC. 25 to JAN. 3
Saturdays and Sundays and Holidays
Also: Feb. 15th through 19th

The staff of Klersy Realty
would like to wish you

Something for New Years
The BEST for 1982



K KLERSY REALTY
439-7601



282 DELAWARE AVE., DELMAR 12054

HENRY J. KLERSY JR. BROKER

LOW RENTAL RATES

ANY KIND OF
CAR YOU WANT



WE HONOR
MOST MAJOR
CREDIT CARDS



Rent-a-Car

As Low as \$13 per day

MARSHALL'S GARAGE INC.
Rt. 9W RAVENA 756-6161

Best Wishes for a Wonderful Holiday

Lori Breuel	Evelyn Kennedy
Gladys Dillenback	Arlene Grady
Helen Eaton	Mabel Ritchie
Jo Keers	Maryellen Saba
Annette Schiavo	

439-8129



Eaton & Breuel



The Bethlehem Public Library's children section had its own Christmas tree this year, thanks to Farm Family, the Glenmont insurance company. Admiring the tree are library workers Barbara Freedman, left, and Michele Giuffre, right, with Farm Family Vice President H.J. Rus' Stembel.

Spotlight

Police host training course

Bethlehem police played host to officers from five other departments last week in a four-day course on basic crash management.

The officers learned how to reconstruct an accident using skid marks and other information, investigative procedures and ways to determine causes and factors of accidents, according to Beth-

lehem Sgt. Richard Vanderbilt.

The course was conducted by Bethlehem and the highway safety division of the state Department of Criminal Justice Services. In addition to seven Bethlehem officers, students attended from Albany, Coeymans, Rensselaer, the Capital Police and the Capital District Park Commission Police.



**THE COMPLETE
FUEL SERVICE**

FUEL OIL • KEROSENE
GASOLINE • DIESEL

INSTALLATION OF HEATING AND
AIR CONDITIONING SYSTEMS

MAIN-CARE HEATING SERVICE

The Company to have in your home ... all year round.
318 Delaware Ave., Delmar • 24-Hour Service • 439-7605

LEGAL NOTICE

LEGAL NOTICE

**NOTICE TO BIDDERS
SOUTH ALBANY SEWER DISTRICT
TOWN OF BETHLEHEM
ALBANY COUNTY NEW YORK
CONTRACT NO. 5
WASTEWATER TREATMENT FACILITY
USEPA—NYSDEC C-36-1096**

Sealed proposals for the South Albany Sewer District of the Town of Bethlehem, Albany County, New York for Construction of the following work:
Contract No. 5

Construction of a wastewater treatment facility including septic tanks, pumping station, subsurface sand filters, and miscellaneous site improvements, on Scott Boulevard in the community of South Albany, Town of Bethlehem, Albany County, New York,

will be received by the Town Board of the Town of Bethlehem, New York, at its office in the Town Hall, 445 Delaware Avenue, Delmar, New York, until 10:00 a.m. (local time) on Wednesday, January 27, 1982, and at that time and place will be publicly opened and read aloud.

Plans and Specifications for the proposed work are on file and are now publicly exhibited at the Office of the Town Clerk, 445 Delaware Avenue, Delmar, New York, and at the Office of J. Kenneth Fraser and Associates, P.C., Consulting Engineers, 620 Washington Avenue, Rensselaer, New York. Copies of said plans and specifications can be obtained at either of the above addresses.

A deposit of \$50.00 will be required for each set of plans and specifications furnished to prospective bidders, which sum will be refunded only to those submitting a formal bid, if said plans are returned in good condition within thirty (30) days after the award of the contract. If additional sets of plans and specifications have been obtained, one-half the amount of the deposit will be refunded upon the return, in good condition, of each additional set. Refunds will not be made to non-bidders

or materialmen.

Each proposal must be accompanied by a certified check in the sum of five percent (5%) of the amount of the bid, drawn upon a National or State Bank or Trust Company, to the order of Thomas V. Corrigan, Supervisor of the Town of Bethlehem, New York, or a bond with sufficient sureties in a penal sum equal to five percent (5%) of the bid, conditioned that if his bid is accepted, he will enter into a contract for the same and that he will execute such further security as may be required for the performance of the contract. A separate Performance and Payment Bond, each equal to one hundred percent (100%) of the contract amount will be required of the successful bidder, and the bonds shall be satisfactory to the Town Board.

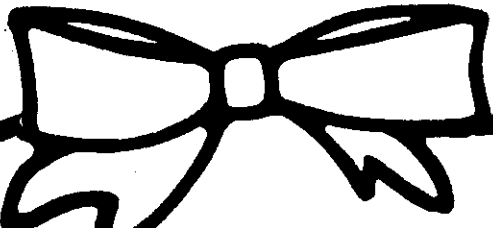
The Contractor shall not include in his bid sales and compensating use taxes on the cost of materials which are to be incorporated into the work.

Bidders on this work will be required to comply with the President's Executive Orders No. 11246 and No. 11375, which pertain to non-discrimination in employment.

Any Contract or contracts awarded under this invitation for Bids are expected to be funded in part by a grant from the United States Environmental Protection Agency. Neither the United States nor any of its departments, agencies or employees is or will be a party to this invitation for Bids or any resulting contract. This procurement will be subject to regulations contained in 40 CFR 35.936, 35.938, and 35.939.

The successful Bidder must comply fully with the requirements, terms and conditions of the U.S. Environmental Protection Agency, Region 2 Minority Business Enterprise (MBE) requirements and the statement of EPA policy of December 26, 1978. The successful bidder will make good faith efforts to subcontract at least 12 percent of the total value of MBE.

The bidder to whom the contract may be awarded shall attend at the said



**All of us at JOHN'S
Beauty Salons
Wish you a Very
Merry Christmas**

- Barbara
- Bob
- Brenda
- Cheryl
- Debbie
- Donna
- Joanne
- Joe
- Judy
- Linda
- Lori
- Margie
- Mia
- Sue
- Susan

John's Normanside — 11 Delaware Plaza, Delmar
Southgate — 1 Becker Terrace, Delmar
The Strand — 11 N. Pearl, Albany
Westgate — Westgate Shopping Center, Albany

**Our Dollar
Greeting Card**

Dear Friends,
The Holiday Season is a Time for
Thanksgiving—
We would like to express our
Thanks for the opportunity To Serve
You—
And to Sincerely wish Everyone
The Very Happiest of Holidays

And if you present this Card
between Dec. 29-Jan 2, 1982 we will
give you \$1.00 OFF the regular price
of our 5 lb. Box of Chuck Patties—
We make them good (for your New
Years Party)

Sincerely,
Jim

P.S. Next week, your Favorite New Years Special
FRESH SPARE RIBS. The price is right...

Store Hours:
Tues-Wed-Thurs 9-6,
Fri 9-7, Sat 9-4:30

McCarroll's
Village Butcher Inc.
279 Delaware Ave.
Elsmere, N.Y.

—Since 1921—



Thank You

To all our customers and friends during the 1981 year especially during our recent move (*What a job — only one bottle broken!*) We're looking forward to serving you in our new, comfortable location with an abundance of parking!

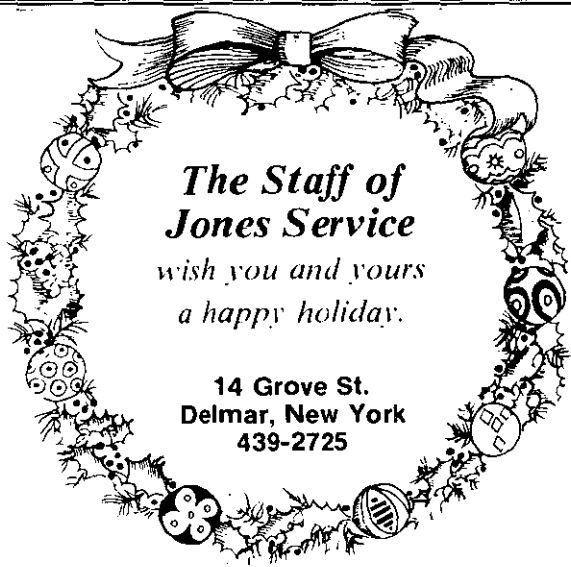
**Happy Holidays
and Happy New Year
from Bill and the Staff**

**Delmar Wine and
Liquor Shop**

411 Kenwood Ave. Delmar 439-1725

ANNOUNCEMENT

Roger T. Drew, M.D. announces the dissolution of his medical partnership with Drs. Duffy and Leyhane at their request. Dr. Drew wants it to be known that he will continue to serve the community as he has for the past 26 years, full-time, in the practice of Internal Medicine at his present location, 785 Delaware Avenue, Delmar.



**The Staff of
Jones Service**
wish you and yours
a happy holiday.

14 Grove St.
Delmar, New York
439-2725

Happy Holidays To Everyone

from
Dorothy Safarik
of

The Cardinal Yarn Shop

282 Delaware Avenue
Delmar
439-0331

Tues. - Fri., 10-5

Sat., 10-3

LEGAL NOTICE

opening place of the said bids, with the sureties offered by him, within seven (7) days after the date of notification of the acceptance of his proposal, and there sign the contract for the work in triplicate. In case of his failure to do so, or in case of his failure to give further security as herein prescribed, the bidder will be considered as having abandoned the same, and the certified check or other bid security accompanying his proposal shall be forfeited to the Town.

The Town Board of the Town of Bethlehem reserves the right to waive any informalities in or to reject any or all bids submitted.

By Order of the Town Board of the Town of Bethlehem, New York.

(Signed) MARION T. CAMP
Town Clerk

Dated: December 16, 1981

(Dec. 24)

LEGAL NOTICE

Notice is hereby given that Restaurant Wine, license number 31910 has been issued to the undersigned to sell beer and wine under the Alcoholic Beverage Control Law at 154-B Delaware Avenue, Elsmere, Albany County for on-premises consumption.

FRANK MAIO
DBA: Normanside Lunchette
154-B Delaware Avenue
Elsmere, New York 12054

(Dec. 24)

NOTICE OF PUBLIC HEARING

NOTICE is hereby given that the Planning Board of the Town of Bethlehem, Albany County, New York, will hold a public hearing on Tuesday, January 5, 1982, at 7:30 p.m., at the Town Offices, 445 Delaware Ave., Delmar, New York, to take action on the application of Izak Giwerc, President, Bronco Development, Ltd., 49 Marsdale Street, Albany, N.Y., for approval by said Planning Board of a Building Project within the Planned Residential District located on the west side of Elm Avenue, between Feura Bush Road and Elm Avenue East, as shown on map entitled "Proposed Building Project, PLANNED RESIDENCE DISTRICT NO. PRD-3, SECTION NO. 5, Town of Bethlehem—Albany County—New York, Lands Owned by Bronco Development, Ltd., 49 Marsdale Street, Albany, New York 12208," dated October 16, 1981

LEGAL NOTICE

and made by G. Alan Cruickshank, PLS, Clifton Park, N.Y., on file with the Planning Board.

EDWARD H. SARGENT, JR.
Chairman, Planning Board
(Dec. 24)

LEGAL NOTICE

NOTICE IS HEREBY GIVEN that a public hearing will be held by the Town Board of the Town of Bethlehem, Albany County, New York at the Town Hall, 445 Delaware Avenue, Delmar, New York on the 13th day of January, 1982 at 7:30 P.M. to consider a proposed ordinance to restrict obstructions within the Town Highway right-of-way such as trees, shrubs, plants, fences, walls and berms.

All interested persons will have an opportunity to be heard at said hearing.

BY ORDER OF THE TOWN BOARD
TOWN OF BETHLEHEM
MARION T. CAMP
Town Clerk

Dated: December 9, 1981

(Dec. 24)

NOTICE TO BIDDERS

NOTICE IS HEREBY GIVEN that the Town Board of the Town of Bethlehem hereby invites sealed bids for the furnishing of Gasoline and Diesel Fuel for the use of said Town for the year 1982.

Bids will be received up to 2:00 P.M. on the 6th day of January, 1982, at which time such bids will be publicly opened and read aloud at the Town Hall, 445 Delaware Avenue, Delmar, New York. Bids shall be addressed to Mr. Thomas V. Corrigan, Supervisor of the Town of Bethlehem, 445 Delaware Avenue, Delmar, New York. Bids shall be in sealed envelopes which shall bear, on the face thereof, the name and address of the bidder and the subject of the bid. Original and one copy of each bid shall be submitted. Copies of the specifications may be obtained from the Town Clerk at the Town Hall, Delmar, New York.

The Town Board reserves the right to waive any informalities in or to reject any or all bids.

BY ORDER OF THE TOWN BOARD
OF THE TOWN OF BETHLEHEM
MARION T. CAMP
Town Clerk

Dated: December 16, 1981

(Dec. 24)

LEGAL CLINIC

UNGERMAN AND ACKERMAN, P.C.

Route 9W, Ravena, New York (518) 756-3121

(Next To Gloria's Beauty Salon And One Stop Auto)

Hours: Monday-Friday 9 a.m. to 5 p.m.

Saturday and Evening Hours By Appointment

Consultations	First ½ Hour Free
Uncontested Divorces	\$195.00
Uncontested Separation Agreements	\$125.00
Simple Wills	Starting at \$20.00
New Corporations	\$100.00
Real Estate Closings	½ of 1%
Bankruptcy	\$200.00
Negligence & Malpractice Cases	Contingency Basis
Justice & County Court Cases	Starting at \$50

The above fees do not include court costs and disbursements

DAVES GLASS COMPANY

154-B Delaware Ave.

439-7142

- mirrors • tabletops
- auto glass • stained glass & supplies
- storms & screens

**Broken Window?
Torn Screen?
LET US FIX 'EM!**



340 Delaware Ave.
Delmar, 439-9385

Mon., Tues., Wed., Fri., 8-5:30
Thurs., 8-8 Sat. 8-5

HELP WANTED

HELP WANTED, Leonardo Hair Designers, booth rental available. 439-6066. TF

Information on Alaskan and OVERSEAS employment. Excellent income potential. Call 312-741-9784. 3T1231

REAL ESTATE IN A SLUMP? Baloney! Ours is up over 20%; we've opened 5 new offices and developed our own mortgage company. Special training for licensed and unlicensed alike. Interested? Call Joe Silvey, REALTY USA 371-4500. Your confidentiality assured. TF

FINISH CARPENTRY. Kitchens, doors, built-ins. Small jobs preferred. Steve, 439-0727. 2T1231

Call **STEVE HOTALING**

THE HANDY MAN

Home Repairs
Remodeling
Interior-Exterior
Painting
Aluminum Doors
and Windows

439-9026

HOME IMPROVEMENT

HOUSECRAFT

- Maintain
- Repair
- Remodel

Painting — Wallpapering
Carpentry — Design
(No Job Too Small)

439-4378

WOOD FLOOR SANDING/RE-FINISHING. Free estimates. Call Kevin Geery, 439-3787. 3T1231

INTERIOR DECORATING



Beautiful WINDOWS

by Barbara
Draperies,
Bedspreads
your fabric or mine
Estimates
872-0897

**DELMAR DECORATORS
SAVE UP TO 20%**

Slipcovers, Draperies,
Table Pads, Bedspreads,
Wood & Cloth Shades
Delmar • 439-4130

JEWELRY

EXPERT WATCH, CLOCK AND JEWELRY REPAIRS. Jewelry designed to order. Estate appraisals. Engraving. Your trusted jeweler. **LE-WANDA JEWELERS, INC.** Delaware Plaza Shopping Center, 439-9665. 25 years of professional service. TF

LOST

LOST, CROSS pen, sterling, in Denby's at Customer Service desk 12/5/81, sentimental value. Reward. 439-2970.

MASONRY

**ALL TYPES MASONRY
NEW — REPAIRS**

26 Years Experience
Chimneys, Fireplaces, Stoops, Walks,
Foundation Repairs, Waterproofing
PROFESSIONAL WORK WITH INTEGRITY
Serving this community for years
with Pride—Satisfaction Guaranteed
F. JOSEPH GUIDARA
439-1763, evenings

MASONRY

MASONRY/CARPENTRY

GENERAL

Chimneys: Repaired	Replaced	Wood-burning	Insured — Free Estimates	Additions	Dormers	Bathrooms	Roofing
--------------------	----------	--------------	--------------------------	-----------	---------	-----------	---------

SMITH & SON • 439-0284

MISC. FOR SALE

PASSPORT AND ID PHOTOS. Ready in minutes. Call L. Spelich, phone 439-5390 TF

275-GALLON FUEL TANK with approx. 200 gallons fuel oil, \$250. 439-3946. 2T1225

SNOWBLOWER, Ariens 24", 5 HP w/ chains, \$325. 439-1450.

Bermuda Bags

BEST SELECTION

No store has a greater selection of Bermuda Bags and Covers than

CASUAL SET
of Stuyvesant Plaza

MUSIC

PIANO LESSONS. All ages, levels, adult beginners. MA degree. **Sandra Zarr**, 767-9728. (Glenmont). 29T1231

PIANO LESSONS at your home. Specialty, young children. 438-3183/463-2236.

NURSES

TRI-VILLAGE PROFESSIONAL NURSES available for home care. 439-3838, 439-5807. 4T1231

PAINTING/PAPERHANGING

S & M PAINTING

Interior & Exterior
Wallpapering — Painting
FREE ESTIMATES
INSURED • WORK GUARANTEED
439-5592 after 5 p.m.

VOGEL
Painting
Contractor



Free Estimates

- RESIDENTIAL SPECIALIST
- COMMERCIAL SPRAYING
- WALLPAPER APPLIED
- DRY WALL TAPING

Interior — Exterior
INSURED

439-7922 439-5736

PAINTING & PAPERHANGING

D.L. CHASE



Painting Contractor

Residential Specialists

Complete home repair
and maintenance services
768-2069

RUSS McCURDY & SON PAINTING CONTRACTOR

INTERIOR • EXTERIOR
PAPERHANGING
FREE ESTIMATES
INSURED • 439-7124

P & M PAINTING

Interior & Exterior
paper hanging • repairs
insured • free estimates
professional workmanship
438-3104/0620

R.E.O. PAINTING

Exterior/Interior
Free Estimates
Insured/Guaranteed
Richard Oldreik 439-2907
Jack Dalton 439-3458

PETS



CAT HAVEN

FOR CATS ONLY Reservations Required
— Individual Care in Private Home —
ETHEL FAY 765-2715

**Cornell's Cat
Boarding**

767-9095
Heated • Air Conditioned
Your choice of food
Route 9W, Glenmont
(Across from Marjem Kennels)
RESERVATIONS REQUIRED

Eleanor Cornell

In Slingerlands, The Spotlight is sold at the New Scotland Pharmacy, Convenient Food Mart and The Toll Gate.

PLUMBING & HEATING

Home Plumbing Repair Work
Bethlehem Area
Call JIM for all your plumbing problems
Free Estimates • Reasonable Rates
439-2108

LOOK

for the three R's in Plumbing & Heating Repairs & Installations

- Responsible
- Reliable
- Reasonable

If that's what you want in a Plumber CALL

Bob McDonald
756-2738
Days or Evenings
Clip and Save

ROOFING

For a FREE Estimate on



Cyrus Shelhamer Roofing

- SNOW SLIDES
- GUTTERS
- TRAILER ROOFS

INSURED REFERENCES
756-9386

ROOFING SIDING

Residential — Commercial
Ice Seated Eaves

Gable - Built-up - Bonded
Aluminum Siding - Remodeling
Free Estimates - Fully Insured

JAMES

HOME IMPROVEMENT CO.

— Since 1943 —

439-3000

421 Wellington Rd., Delmar, NY

SHARPENING

ICE SKATES SHARPENED. Also saws, scissors, knives, pinking shears, chain saws, etc. 439-5156 or 439-3893. TF

SITUATION WANTED

HEAVY HOUSECLEANING. No job too small. Please call after 4 p.m. 797-5135.

SNOWPLOWING

HORTICULTURE UNLIMITED

SNOWPLOWING
Residential • Commercial

Exclusively serving the Tri-Village Area Residential & Commercial

BRIAN HERRINGTON
482-2678

SNOWPLOWING. Mar-Jem Kennels. Rt. 9W, Glenmont. 767-9718. TF

SNOWPLOWING & removal, driveways, parking lots. 872-0236. 2T1225

SNOWPLOWING

"Snowplowing"

Haslam Firewood Service

Season Contracts
Plowing By The
Snowfall Also
439-9702



Snowplowing

Delmar • Feura Bush area
LOWEST RATES AROUND
Season Contracts
Early Prompt Service

CALL: 872-2450
for free estimate

Snow Plowing

Business — Residential
By Job or Contract

Robert H. Finke and Sons, Inc.

Route 9W Selkirk, N.Y.

Days 767-9331 Nights 767-9001

SPECIAL SERVICES

John M. Vadney

UNDERGROUND PLUMBING
Septic Tanks Cleaned & Installed
SEWERS—WATER SERVICES
Drain Fields Installed & Repaired
—SEWER ROOTER SERVICE—
All Types Backhoe Work
439-2645

Store to Door

Grocery Service
We are the service you can afford

Too Busy Don't Drive
463-6552 CALL 459-5032

Torn Screen?
Broken Window?
LET US FIX 'EM!



340 Delaware Ave.
Delmar, 439-9385

Mon., Tues., Wed., Fri., 8-5:30
Thurs., 8-8 Sat., 8-5

DELMAR SANITARY CLEANERS
serving the Tri-Village area more than 20 years. 768-2904. TF

SPECIAL SERVICES

NORMANSKILL SEPTIC TANK Cleaners. Systems installed, sewer roofer service, 767-9287. TF

TABLE PADS

TABLE PADS, blinds, window shades, made to order. Free estimates. Call **DELMAR DECORATORS**, 439-4130. TF

TREE SERVICE

HERM'S TREE SERVICE, Call IV2-5231 TF



CONCORD TREE SERVICE

Spraying for insect & disease control

- REMOVAL
- PRUNING
- CABLING

• 24 Hr. Emergency Service
Free Estimates - Fully Insured
439-7365

(Residential • Commercial • Industrial)

REAGAN'S TREE SERVICE
EMERGENCY SERVICE
ANY DAY ANY TIME
COMPLETE TREE SERVICE
STUMP REMOVAL

- Trimming • Cabling • Removing
- FULLY INSURED • FREE ESTIMATES

439-5052
10 Gardner Terr Delmar

RENTAL

Log Splitter
DIDIER
Crupe's

202 Main St., Altamont
861-8316

ROOFING

Can't decide who to call to do your ROOF?



Why not call the company where superior workmanship still means something?

VANGUARD ROOFING CO.

Free Estimates—Fully Insured

Call **JAMES S. STAATS**
767-2712

In Delmar, The Spotlight is sold at Handy Andy, Delmar Card Shop, Tri-Village Drug and Johnson's Stationary.

TRUCKING

FRANK MARKUS TRUCKING

- Topsoil
- Yellow Sand
- Crushed Stone



Orchard St., Delmar **439-2059**

MOVING

Pickup/Removal Local/Long Distance ANYTHING/ANYTIME

477-6535 • 732-2137

WANTED

WANTED: Used woodworking equipment. 439-0727. 2T1231

I BUY old cameras, toys, radios, dolls, postcards, photos, trains, crocks, books, etc. Eves. 439-5994 TF

HO TRAINS. Need cash for college? Giving up the hobby? Collector will buy trains, accessories. Also Lionel "O" gauge. Call 768-2695. TF

WANTED

COLLECTOR seeking old Lionel, Am. Flyer, Ives, Maerklin trains. Call 463-4988. TF

WANTED

We pay cash for
USED APPLIANCES
Free pick-ups
439-9582 / 355-1313

REAL ESTATE FOR RENT

DELMAR GARDEN APT. 1 bedroom & den or 2 bedrooms. \$325-\$350 plus utilities. 1st floor sun porch. 439-6295. 2T1231

NEW SKI HOUSE, Bromley/Stratton, 4 bedrooms, 2 baths, 2 fireplaces, laundry, \$150 per day—5-day minimum. Days 765-4616, evenings 439-7564.

DELMAR OFFICE SPACE: 800 sq. ft. at 264 Delaware Ave. with ample parking, ideal for professional office. Available for rent immediately. Call Fred or Bill Weber, 439-9921. TF
\$325, 2 BR APT. Heat, range, refrig. Sec. dep., no pets. Bus line. 439-9824. 2T1225

FOR LEASE

Office or Retail

1135 sq. ft.
1st quality building

339 Delaware Ave.
439-7666

2 OFFICES. Heart of Delmar, good parking, \$275/mo. & \$225/mo. includes utilities. 439-4949.

OFFICE

Bright/Cheerful

Heart of Delmar

Good Parking

1,000 Sq. Ft.

\$500 Mo.

439-5363

REAL ESTATE FOR RENT

DELMAR GARDEN APT. 1 BR & den or 2 BR, \$325-350 plus utilities 1st floor, sun porch. 439-6295.

RETAIL STORE, 19 X 47, heart of Delmar, Good Parking, 439-4949. 716TF

REAL ESTATE FOR SALE

BUILDING LOT, town water, off Feura Bush Rd. 115 x 150, \$10,500. 756-2394. 2T1217

REAL ESTATE



DIRECTORY

Local

ERA

John J. Healy Realtors
361 Delaware Ave.
439-7615

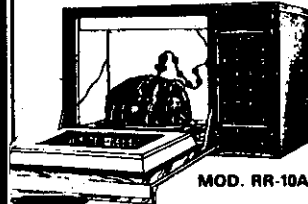
PICOTTE REALTY INC.
205 Delaware Ave.
439-4943

NANCY KUIVILA
Real Estate, Inc.
276 Delaware Ave., Delmar
439-7654

Amana.
Radarange
MICROWAVE OVEN

SAVE \$89.90

WHEN YOU PURCHASE
MOD. RR-8TA OR RR-10A



MOD. RR-10A

- POPCORN POPPER *\$9.95
- CANDY MAKER . . *\$9.95
- COOKING CLASS *\$30.00
- SAVINGS TO YOU... **\$89.90**

FOR A LIMITED TIME ONLY

Van Dyke's
APPLIANCES 439-6203

222 Delaware Ave., Delmar
Mon-Thurs 10-7 Fri & Sat 10-5



**WISHING YOU A
MERRY CHRISTMAS
AND
HAPPY NEW YEAR**

From all of us at
Picotte Real Estate, Inc.

Mary Bennett
Craig Borner
Sam Capone
Carol Carpenter
Theresa Conery
Tony Consolo
Verne Eagan

Arthur Hatch
Jim Hudson
Sue Linsley
Harold Mason
Carole Rosenbloom
Bob Woods
Donna Fish (Secretary)

Wayne Linsley- Manager

PICOTTE
REAL ESTATE



439-4943
205 Delaware Ave.
Delmar, NY

We bring people home.

**Spotlight Classifieds Work!
WRITE YOUR OWN!**

Minimum \$3.00 for 10 words, 25 cents each additional word.
Phone number counts as one word.

DEADLINE 4 P.M. EACH FRIDAY

- MISC. FOR SALE
- HELP WANTED
- SITUATIONS WANTED
- REAL ESTATE FOR SALE
- REAL ESTATE FOR RENT

I enclose \$ _____ for _____ words

Name _____

Address _____

Phone _____

MAIL TO: Spotlight, P.O. Box 152, Delmar, N.Y. 12054
OR BRING TO: Spotlight, 125 Adams St., Delmar, N.Y.

Vox Pop

Vox Pop is open to all readers for letters in good taste on matters of public interest. Letters longer than 300 words are subject to abridgement, and all letters should be double-spaced and typed if possible. Letters must be signed; names will be withheld on request. Deadline is the Friday before publication.

Future Slingerlands

Editor, The Spotlight:

Your recent issue contained a letter endorsing the proposed shopping center in Slingerlands. Our society is full of future thinking individuals who want every service and amenity instantly convenient to them. Why not take beautiful Slingerlands and install a hamburger stand, a donut shop, an amusement parlor, a submarine shop, a sprinkling of bars, offices and commercial establishments.

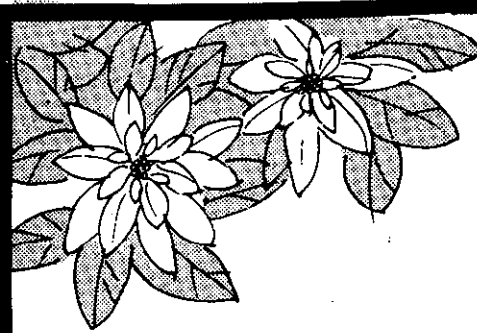
Let's widen the road, install neon sunlight 24 hours a day.

We could even convert those Victorian monstrosities to offices and shops. As a matter of fact, we could tear those ancient houses down and build right up by the edge of the road so that we will not have to walk 30 or 40 feet to our favorite bistro. All one has to do is to look at Delaware Ave. or Latham to see how it's done.

I am sure of two things. The fact that any possible inroads of garish commercialism will be resisted by the Slingerlands residents, and equally as important, when and if it comes, those individuals who advocated it will then move to some quiet neighborhood in an attempt to regain the quiet composure that was their reason for originally moving to Slingerlands.

Eugene Ouder Kirk
Slingerlands

In Delmar, The Spotlight is sold at Handy Andy, Delmar Card Shop, Tri-Village Drug and Johnson's Stationery.



Community Corner

A Christmas Wish

May the peace and joy of Christmas be with you and your family this season and throughout the new year.

Community Corner, a public service column of important community events, is sponsored by



Member FDIC

BETHLEHEM

167 Delaware Ave., Delmar/439-9941

Mon.-Fri. 9am-3pm/Fri. 5pm-8pm/Sat. 9am-1pm

Drive-up Window

Mon.-Thurs. 8am-5:30pm/Fri. 8am-8pm/Sat. 9am-1pm

EXPRESS OFFICE

2 Delaware Plaza, Delmar/439-0263

Mon.-Sat. 11am-3pm/Wed. 5pm-7pm

Take the work out of SPLITTING LOGS!



SPECIAL MODELS ON SALE

PC26M - \$849⁹⁵

PC26A - \$889⁹⁵

QUANTITIES LIMITED

Model MF26
26" log capacity, 5 H.P.
Briggs & Stratton engine, 10 ton
splitting force, Highway
tires and hitch

WITH A DIDIER

HYDRA-SPLITTER

- **Easy to use** Hydraulic pump delivers tons of splitting force, driving even the toughest logs with ease through the slim-cut wedge
- **Dependable** 10 hydra-splitter models... designed both for the amateur as well as professional... from the world's largest manufacturer of hydraulic log splitters.
- **Economical** Come in and let us show you just how much you can save in man-hours alone!

DIDIER

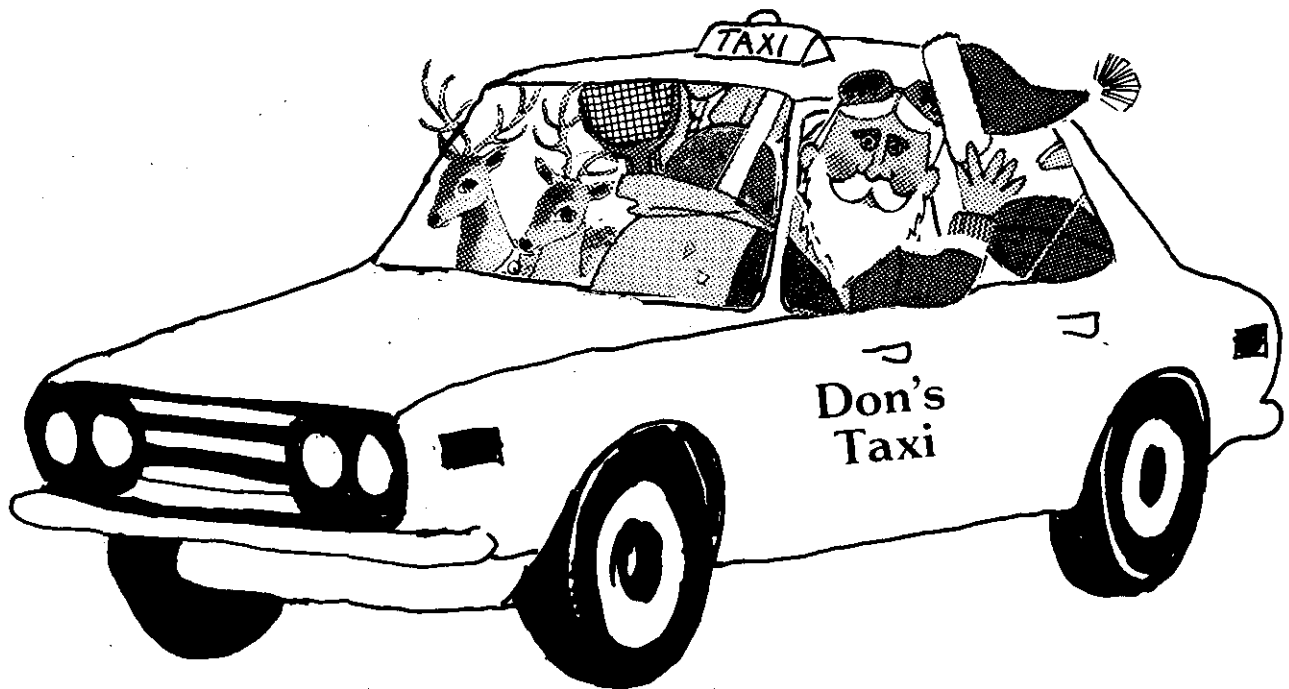
abele

Sales • Service
Rentals

Abele Tractor and Equipment Co., Inc.
72 Everett Rd., Albany, N.Y. 12205, 438-4444

HAPPY HOLIDAYS

To All Our Patrons



And

HAPPY NEW YEAR

DON'S TAXI

Affordable Package

438-7532



Bethlehem Public Library 7-823-1
451 Delaware Ave.
Delmar, NY 12054