

## Orphan pup finds home



Michael Fritts and friend

It only took a couple of hours Friday to find a friendly home for a puppy abandoned in a shopping cart at Albany Public Market in Elsmere.

Myron (Red) Ray, Bethlehem dog warden, called to the market, said the pup, who would win the heart of any onlooker, appeared to be between four and five weeks old.

There was no doubt about its health — excellent — and his parentage — mixed. It was brown and black, a genuine hound, product of a street-corner romance.

At town hall Barbara Hodom, clerk of the court, found a willing taker in Michael Fritts, 9, a Slingerlands third-grade pupil and son of Town Justice Roger M. Fritts. When Michael took possession he hadn't had time to think up a name.

But Red Ray had time to remind people that it is a punishable misdemeanor to abandon animals in the Town of Bethlehem. Less than an hour before he was called to the market, Ray had been called to 30 Chestnut Rd., Elsmere, for an abandoned kitten, which he put up for adoption at the Humane Society.

He also had a word for anyone with an unwanted animal: before you're tempted to break the law, call the Bethlehem police dispatcher, 439-9973, and the warden will do the rest.

## Duplex hearing could be lively

By Theresa Bobear

The Bethlehem Town Board is anticipating a larger and livelier turnout than usual next Wednesday (Sept. 12) when it holds a public hearing (8 p.m.) on a controversial proposal to remove duplex housing as a permitted use in A-Residential zones.

The proposed change in the zoning law would make all duplexes currently in A zones non-conforming uses. According to Building Inspector John Flanigan, existing duplexes in A-Residential areas could continue as non-conforming uses indefinitely provided the non-conforming use does not cease for more than 12 months.

As stated in Article XV of the zoning ordinance, a non-conforming use "may not be reconstructed or structurally altered in aggregate more than 25 percent of the ground area of the building, unless the use of said building is changed to a conforming use."

The non-conforming use of a duplex in an A zone, Flanigan said, could continue after sale of the building provided the use had

not ceased for more than a year. The owner of a parcel of land would be able to get a variance from the board of appeals, the building inspector said, but if the land were sold, such a variance would no longer be automatic.

Previously, Bruce Secor, commissioner, informed members of the Bethlehem Planning Board that in some areas — particularly North Bethlehem — additional duplexes would overtax the sewer system. Flanigan said that most of the vacant land zoned A-Residential is in North Bethlehem, Selkirk and along the Hudson River, but only the North Bethlehem land has the services to make it viable for development at this time. The sewers in North Bethlehem, Flanigan said, were built to accommodate single-family homes.

At its July 3 meeting, the planning board voted to recommend removal of duplexes as permitted uses from A zones.

Until recently, Flanigan said, the planning board has approved construction of between eight and

(Turn to Page 15)

## Mini-mall merchants miffed at marking

### Protest Plaza parking ploy

When is a fence not a fence? When it's lines painted on a pavement, apparently.

Those yellow lines, painted on blacktop between Delaware Plaza and the Delaware "mini-mall" next door, touched off a new skirmish between mercantile neighbors in Elsmere last week.

Shop proprietors in the mini-mall, occupying the former L.C. Smith bus garage building, have had an uneasy peace with HMC Associates, owner-operators of the Delaware Plaza, ever since the Battle of the Snowplows was resolved several years ago.

The latest squabble stemmed from the Plaza management's

decision to paint lateral parking lines along the new blacktop the length of Albany's aqueduct easement, which separates the two commercial tracts. The appearance of the yellow lines constituted an unbroken barrier between the two shopping complexes when occupied by parked cars.

William Johnson, proprietor of Bill 'n' Lou's Antiques in the mini-mall, black-painted over yellow lines on two of the parking places after, he said, he had received permission from Kay McCabe, Plaza manager, to do so. Johnson

also purchased and posted "no parking" signs in an effort to keep open the two access lanes.

On Friday the yellow lines were restored, and again mini-mall merchants raised their voices, protesting that access to their stores from the Plaza was once more cut off.

McCabe denied she had given Johnson permission to black over the disputed access. State Sen. Howard Nolan, Albany attorney and a partner with Norris MacFarland of Slingerlands in HMC Associates, confirmed that, and

explained the situation thus:

"We spent \$100,000 to pave that easement on our property in the last month or so. We asked the landlord next door (Smith) to share in some percentage (not defined) for a portion of pavement and maintenance, including snowplowing, if they want to use it.

"So far we've gotten a negative response. Frankly, an engineer told us our pavement would deteriorate very quickly if cars go back and forth from this unpaved section. We'd be happy to let them use the easement and come through here if they pave their share."

The mini-mall property is part of the estate of the late L.C. Smith and is held in trust by State Bank of Albany, now Norstar Bank of Upstate N.Y. An heir is Leonard C. Smith, Jr., who maintains a lawnmower repair shop in the mini-mall. Smith said Monday that several years ago a consulting firm had told him it would cost some \$100,000 to blacktop the area around the mini-mall but that the surface would not last more than one winter because the subsurface is non-porous clay to a depth of 30 feet.

He added that the Delaware Plaza parking lot in past years had been a victim of the subsurface.

Smith said bulldozers and graders would be working on the mini-mall lot this week. "With our rental prices, we can't afford to blacktop," Smith said.

Of the latest effort to close off access to the mini-mall from the Plaza, Smith said, "The tenants are disturbed, I'm disturbed, our customers are disturbed . . . Our attorneys are in touch with Sen. Nolan. We're doing what we can legally."

In any event, the mini-mall area has never been paved, and has been a constant source of irritation for tenants and customers. Said one mini-mall merchant: "This jerking around frustrates me. It's going to hurt. The true customer is going to come in, but . . . what can you do? Really nothing."

One recent winter snowplows clearing Delaware Plaza pushed snow into a 15-foot high barrier the length of the easement between the two complexes. HMC management subsequently silenced the angry protests of neighboring merchants by cutting an access through the wall of snow. Meanwhile, no one has heeded mini-mall complaints that, even with a plowed access, melting snow from the walls piled up from the Plaza each winter washes out sections of Smith's parking lot.



For a while a barrier reinforced the painted lines and added fuel to the tiff between neighboring

businessmen in Elsmere on parking access.

Spotlight

# Deadline on police flap

The Bethlehem Town Board and the Police Benevolent Association have a Friday deadline for letting the state Public Employment Relations Board (PERB) know who they each would prefer as an arbitrator in their dispute concerning overtime. The dispute centers around the stipulation in the PBA contract with the town that officers be paid time-and-a-half for at least four hours of overtime if they work any overtime at all.

Until June, when police Chief Paul Currie ordered that off-duty officers called in for court appearances perform police work for the

full four hours, the practice had been for the officer to leave when his court responsibilities were over and still to be paid for four hours of overtime. Dispute over Currie's order has led to the disciplining of four officers in recent weeks. The disciplinary decisions, made by the town board on the recommendation of the hearing officer, are being appealed to state Supreme Court.

While these cases are pending, both sides have agreed to arbitration to clarify the contract terms.

Given a list by PERB of five possible arbitrators (with brief resumes), the board and PBA

each are to eliminate two names from the list and rank the remaining three in order of preference, a PERB spokesman said. The person with the highest combined rank will be appointed arbitrator. Each party also has the one-time option of rejecting the entire list.

Under terms of the contract with the PBA, the arbitrator's decision will be binding.

## Home-grown grass

A South Bethlehem resident was charged Friday with criminal possession of marijuana, fourth degree, after police were called to his home because of a family dispute, according to Bethlehem police reports. The report said the man told the police he had grown the marijuana in the woods behind his home.

## Learn to dive

The Bethlehem Parks and Recreation Dept. will offer a diving program Mondays Sept. 17 through Dec. 3 at the Bethlehem Central High School pool. All participants must have dived from a springboard at least once. Beginners will meet from 6 to 6:45 p.m., intermediate and advanced divers from 6:45 to 7:30 p.m. There is a limit of 10 divers per session and a fee of \$12 per diver. Pre-registration is required and can be made by telephone or in person at the park office, 439-4131.

# Village awaiting report on sewer

By Theresa Bobear

Voorheesville village officials are hoping the Albany County Health Dept. will take action on the engineering report summarizing the proposed acquisition of the Salem Hills sewer system in time for the village board to schedule public hearings next month.

Mayor Richard Lennon said last week that the village was still waiting for the department's commentary on the Clough, Harbor and Associates report. As a result, last Tuesday's regular August meeting of the village board took only 17 minutes.

Informally, Lennon noted that health department spokesman Stephen Lukowski indicated that he anticipated no major problems with the acquisition plan. Lennon said that he hopes to schedule at least one — possibly both — of the public hearings for the acquisition during October and noted that board attorney Donald Meacham is drafting a contract for the purchase.

In an unrelated matter, the board assigned Meacham to study and advise the board about the village's option to expand real property tax exemptions to include veterans of the Korean and

Viet Nam wars. The board was informed of the expanded exemption qualifications through correspondence from the National Conference of Mayors.

A directory of area physicians who accept Medicaid and Medicare compiled by the Community Service Senior Citizens Council is now available at the village hall, said Trustee Susan Rockmore. The St. Peter's Hospital Lifeline program is also available to Voorheesville residents, she said, thanks to the efforts of James MacDonough, council chairman. Rockmore announced that the council has scheduled a public meeting for 7 p.m. Sept. 20 at the Voorheesville fire house to provide residents with an opportunity to offer suggestions and learn about the needs of senior citizens in the community.

In other business, the board:

- Learned from Trustee Daniel Reh that the Voorheesville Fire Dept. is in the process of compiling its annual report to the village board. Reh also informed the board that William Hotaling, public works superintendent, is getting estimates on new trim for the fire hall.

- Learned from Trustee Richard Langford that the New Scotland substance abuse program will receive funds from Albany County Youth Services.

- Commended Langford for enriching the summer park program. The program provided activities for all ages.

- Learned that the next official village report will be published around Sept. 15. Lennon asked the trustees to submit any information they would like included in the report.

## Clips on Kennedy

The Bethlehem Public Library will participate in the City of Albany's celebration of author William Kennedy with a display of Kennedy's books and with clippings from the library's local history file. The citywide celebration is Thursday through Sunday but the library's display will be up during the entire month. The clippings are on Albany history, places and people mentioned by Kennedy, and include critical and biographical material on Kennedy himself. Also on display will be several newspapers from the Thirties that show Albany as Kennedy described it.

## Farmers in city

This year's Farm-City Day will be Saturday, Sept. 8, at the Empire State Plaza starting at 11 a.m. Live music by the Special Request band will be heard throughout the day. Farmers will be selling produce, cider, flowers, and crafts all day. Demonstrations of sheep shearing, goat milking, and spinning and weaving are scheduled.

## For green thumbs

Albany County Cooperative Extension will present a free program entitled "Winterizing Your Garden" at the Bethlehem Public Library, Thursday, Sept. 13, at 7:30 p.m. The program will provide hints about planting bulbs, caring for trees and shrubs, weeding, mulching, rototilling, and more. For information call the Library at 439-9314.

## George W. Frueh Sons

Fuel Oil • Kerosene

Fuel Oil 95¢ a gal.

Due to the market conditions call for today's prices

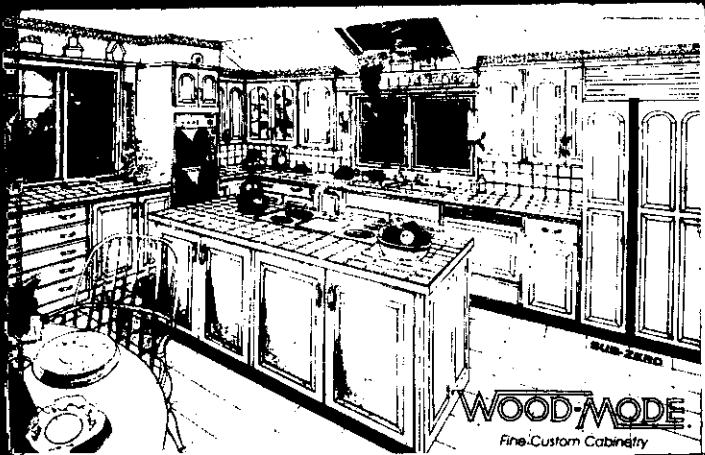
**Mobil®**

Cash Only

Cash Only

436-1050

## 20th Annual Summer Sale...



SAVE 30%...EVENT ENDS SEPT. 22nd

WOOD MODE CUSTOM CABINETS AUTHORIZED  
Once-A-Year Savings Event!

IN THE HIGHLY SOPHISTICATED INTERNATIONAL KITCHEN INDUSTRY, WOODMODE IS THE STANDARD BY WHICH AMERICAN CRAFTSMANSHIP IS REPRESENTED IN THE WORLD MARKET PLACE. THERE IS A LONG HISTORY OF REASONS WHY WOODMODE HAS BECOME THE NUMBER ONE SELLING CUSTOM CABINET IN THIS COUNTRY. REASONS TOO NUMEROUS TO MENTION NOW, BUT CAN BE SUMMARIZED VERY SIMPLY IN JUST ONE WORD, VALUE. VALUE IN DESIGN, VALUE IN QUALITY, OR JUST GOOD, OLD FASHIONED DOLLAR FOR DOLLAR VALUE.

AND NOW, DURING THE SUMMER MONTHS, THAT VALUE IS EVEN GREATER. ORDER YOUR NEW CUSTOM DESIGNED AND CUSTOM BUILT KITCHEN OR BUILT-IN CABINETS FOR ANY OTHER ROOM! DURING THIS SALE AND RECEIVE BIG SAVINGS OFF THE SUGGESTED SELLING PRICE.

VISIT OUR EXCITING SHOWROOM OF KITCHENS & BATHS AND ENJOY THE CONFIDENCE OF DEALING WITH AN EXPERIENCED PROFESSIONAL DESIGNER.

THE ABOVE KITCHEN FEATURES: SUB-ZERO "BUILT-IN" REFRIGERATION!



Designed & Built-in so well you can hardly locate it in the above kitchen or any other kitchen for that matter. Exclusive 24" depth front of refrigerator fits flush with standard base cabinets. A typical free standing refrigerator protrudes into the room four to six inches beyond cabinets creating an unsightly appearance and takes up valuable space.

Sub-Zero built-ins are designed to attach seamlessly from panels matching your cabinetry.

• ADDED BONUS OFFER •  
ORDER YOUR SUB-ZERO DURING OUR SUMMER SALE AND RECEIVE ABSOLUTELY FREE OF CHARGE A SET OF MATCHING WOOD-MODE HAND RUBBED DOOR PANELS FOR YOUR SUB-ZERO REFRIGERATOR.

**Delmar Interior Designs**  
DIV. OF DELMAR CONSTRUCTION CORP.

Mon-Fri 9:30-5:30, Thurs 9:30-5:00, Sat 9:00-noon  
or Call for Appointment Anytime  
228 DELAWARE AVE., DELMAR

439-5250

*Laura Taylor Ltd.*

OPEN 7 DAYS

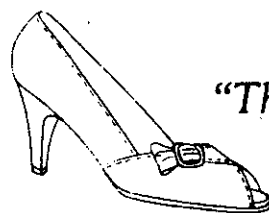
DELAWARE PLAZA

(next to Grand Union)

439-0118

Just Arrived!

NATURALIZER SHOES



"The shoe with the beautiful fit."

\$500 OFF ANY PAIR OF NATURALIZER SHOES WITH THIS AD

Offer Ends 10/15/84

Cannot be combined with any other coupon or sale offer.

SPECIAL OFFER

**BIG**

INSTALLATION ALLOWANCES FROM

**KitchenAid**

UP TO \$50 CASH BACK



KDS-21, KDSS-20 and KDS-20

Install a new KitchenAid Superba Dishwasher now during this big installation Allowance Special and receive \$50 cash back directly from KitchenAid. A great offer, plus all the features of a KitchenAid. There's no better time than now to buy America's leading kitchen appliances.

OFFER EXPIRES OCTOBER 31, 1984

**Van Dyke's**

APPLIANCE CENTER  
222 Delaware Avenue  
Delmar  
439-6203

**KitchenAid**  
For The Way It's Made

# Eyes on county races

## Local candidates seek judgeships

By Tom McPheeters

The Town of Bethlehem often seems outside the mainstream of politics in Albany County, but this year there are enough local connections to fan the interest of voters of any persuasion.

Two of the major party candidates for county judgeships are Bethlehem residents, and both candidates for the state Senate seat that represents the town have strong identities in Bethlehem.

But 1984 is a national election year, which often means that local contests get less attention than they deserve, and that candidates can ride the coattails at the top of the ticket. In Albany County, a landslide Reagan victory — if such a thing were to occur — could counter balance the traditionally heavy Democratic vote from the city and make at least one local race most interesting.

Here's how the lineup looks for this fall:

- For Congress, Sam Stratton is seeking his 14th term. A conservative Democrat, Stratton is so strong that the Republicans are unlikely to back any challenger.

- For the state Senate, Sen. Howard Nolan of Albany is being challenged by Joseph Frangella, former GOP county chairman now living in Slingerlands, and this could shape up as the most interesting local contest of the season.

Frangella was county chairman from 1966 to 1976, and is best known as the owner of a mushroom farm in Coeymans, but he has lived in Slingerlands since 1969 and has good relations with local party leaders. In Nolan he faces a candidate nearly as conservative and well heeled for the campaign; ironically, Nolan's business interests in Bethlehem make him as well known locally as his challenger. But Frangella was known as an aggressive campaign strategist in his chairmanship days, and promises to attack Nolan on the "full-time" issue.

- In the 102nd Assembly District, which includes the Town of Bethlehem, incumbent C.D. (Larry) Lane is opposed by Michael Yusko, Jr., the young mayor of Hudson. Lane's vote totals showed considerable slippage in the 1982 election, and he has indicated that this election (his 12th) may be his last. But Yusko will have to work hard to overcome his lack of recognition in the sprawling 102nd, which covers Lane's Greene County as well as



Anthony V. Cardona

parts of Albany and Columbia counties.

- Next door, the 104th Assembly District appears safe in the hands of veteran Albany Democrat Richard Conners, whose challenger this year is Paul Silverstein, also an Albany resident. The 104th includes Guelderland and New Scotland.

- County Court Judge John J. Turner, who was selected by the county's Democratic organization to fill the imposing shoes of Delmar's John Clyne when he retired this spring, is running for a 10-year term of his own. He will be opposed by Stephen M. Gates of River Rd., Glenmont. Gates served as an assistant Albany County district attorney in the early 1970s during Arnold Proskin's tenure as the county's only Republican DA in many years, and then moved to Wyoming County as first assistant district attorney and later first assistant county attorney. He returned to this area in 1980. His mentor, Proskin, is also making a return bow, running for the Assembly seat in the northern part of the county.

- Another town resident, Anthony V. Cardona of Delmar, has a somewhat better chance of ascending to a judgeship this fall. Cardona is the Democratic nominee for the Family Court judgeship now held by Phillip Coffey, who is retiring. His opponent is Dennis Irwin. Cardona is not well known in political circles, but has impressive professional credentials and the party backing that usually (Proskin being the exception that proves the rule) spells success in Albany County.

As usual, the Conservative Party line will provide the first battle ground for the candidates. Continuing the split of the last several years, the official county committee is endorsing Demo-



Stephen M. Gates

crats — Nolan, Conners, Turner and Cardona — while Conservative Club of Albany County, which is recognized by the state-wide party, has come up with its own candidates in some races and endorsed Lane, Gates and Irwin. In Bethlehem, there are fewer than 50 registered Conservative Party voters, but party officials feel that line is important because four to five times as many voters usually choose that line in a general election.

### Trapped in wreck

A Loudonville woman was listed in fair condition Monday at Albany Medical Center Hospital after an auto accident Sunday morning on Normanskill Rd. in the Town of New Scotland that left her trapped in her overturned car for nearly an hour. An Albany County Sheriff's Department spokesman reported that Marybeth Stewart, 27, swerved to avoid a vehicle in her path, according to deputies, and her car went off the road, hit some rocks and tipped over. The Delmar Rescue Squad freed her from the vehicle, deputies said.

The driver of the other car, Rose Wilkinson, 21, of Voorheesville was charged with making an unsafe turn, deputies reported. The accident occurred near the intersection of Normanskill and Krumkill roads, as the Wilkinson vehicle was turning into a driveway, deputies said.

## Gas rates to dip

Despite a wholesale price increase of natural gas, Niagara Mohawk Power Corp. says that the cost for gas home heating will be 6.6 percent less than a year ago.

Consolidated Gas Transmission Corp., NiMo's natural gas supplier, has requested the Federal Energy Regulatory Commission (FERC) to approve an increase of about two cents per therm in its wholesale gas price because of recent increases in costs from two of its major gas suppliers. The increases are due to continuing deregulation by the federal government of newly discovered natural gas.

The final cost to the consumer will be less than last year because of rebates that are presently being credited to customer's bills, a utility spokesman noted.

"Natural gas remains 30 percent less expensive than heating oil and 47 percent less than propane. In addition, when compared to other New York utilities, Niagara Mohawk's customers will continue to pay below-average costs for natural gas," the utility spokesman said.

The "pass through" clause charges will begin in September.

### sue zick interiors

we can hardly wait to share this with you! a dense, soil-hiding, plush nylon carpet with a 5 year warranty. we have 6 colors and October delivery an exceptional value! \$10.95!

mon.-fri.  
9:30 - 2:30  
tollgate

slingerlands

evenings and  
saturdays by  
appointment  
439-3296

Good Thru Sunday  
9-9-84

This Coupon  
Is Worth

**\$300**

When Purchasing Any Comforter  
In Stock

Clip And Save Valuable Coupon

**LINENS**  
By *Gail*

ALWAYS  
SAVINGS

Located at the Four Corners  
Kenwood Ave. & Delaware Ave.  
Delmar  
439-4979

Open: Mon.-Fri. 9:30-9:00  
Sat. till 5:30 & Sun. 12:00-5:00

• VISA • MASTERCHARGE  
• LAYAWAY

## Indulge Yourself Now



Don't wait to buy Chrysanthemums, enjoy them for the entire season. Brighten up your entrance patio or garden, share them as a gift to a friend.

Mums may be everywhere, ours are unforgettable.

Specializing in Perennials  
Visitors welcome to our display gardens  
Picard Road RD2, Altamont 765-4702  
Open Daily 9 AM to 7 PM

**HELDERLEDGE**

F A R M

## THE SPOTLIGHT

Publisher — Richard A. Ahlstrom

Editor — Thomas S. McPheeters

Secretary — Mary A. Ahlstrom

Advertising Manager — James J. Vogel Advertising Sales — Glenn S. Vadney

Editorial — Allison Bennett, Theresa Bobear, Nat Boynton, Norman Cohen, Susan Guyett, Tom Howes, Barbara Pickup, Vincent Potenza, Julie Ann Sosa, Lyn Stapf, Caroline Terenzini

Contributors — Linda Anne Burtis, J.W. Campbell, R.H. Davis, Lorraine C. Smith, Ann Treadway, Gary Zeiger.

High School Correspondents — Nina Barringer, Peter Fisch, Jennifer Hammer, Kevin Hommel, Mike Larabee, Tania Stasiuk, Damon Woo

Production Manager — Vincent Potenza Production — Cheryl Clary, Tom Howes, Nora Hooper

Newsgraphics Printing — Gary Van Der Linden

The Spotlight (USPS 396-630) is published each Wednesday by Newsgraphics of Delmar, Inc., 125 Adams St., Delmar, N.Y. 12054. Second class postage paid at Delmar, N.Y., and at additional mailing offices. Postmaster: send address changes to The Spotlight, P.O. Box 100, Delmar, N.Y. 12054.

Subscription rates: Albany County, one year \$13.00, two years \$19.00, elsewhere, one year \$15.50, two years \$22.00

(518) 439-4949

## Nearby church is 150

The Third Reformed Church, 20 Ten Eyck Ave., Albany, will celebrate its 150th anniversary during the month of October. The events of the celebration will center around the theme of the church's Dutch heritage, beginning Oct. 7 with a special Sunday service followed by a tree planting. On Friday, Oct. 12 a sandwich supper will be followed by a program entitled "Reflections," a visual and verbal review of the church's history as reflected by church members.

Children dressed in colonial Dutch costume will participate in the layman's Sunday service scheduled for Oct. 14, followed by a kinderkermiss, sweeping of the parking lot by the young Dutch children, and lunch. The choir will present a concert at an afternoon tea Oct. 21, an anniversary roast beef dinner will be held Oct. 26, and the celebration will close with a communion service Oct. 28. For information call Marion Hotaling, 439-2525.



Neil Hoey

## New office open

Pratt-Vail Associates, a local tax and accounting firm, has announced the relocation of their Delmar office to 208 Delaware Ave. as of Sept. 1. The move to the larger office is being made to accommodate increased business in the Delmar area. The firm also has offices in Clifton Park and Colonie.

## Ad exec named

Neil Hoey, a former Delmar resident, has been named vice president and associate creative director of Levenson, Levenson and Hill Advertising, a Dallas-based full-service advertising and public relations agency. Hoey has had more than 20 years of experience as copy manager, Stanford Agency, Dallas; assistant art director, Benton and Bowles, New York; television visualizer and writer, S.H. Benson, London, and copywriter for Grey Advertising, New York.

## Exercise class

A musical exercise class for boys and girls in first through fifth grades will be offered by the Bethlehem Parks and Recreations Department from 6:30 to 7:30 p.m. Mondays, Sept. 10 through Nov. 5.

The program will feature creative exercise and street dancing to rock, jazz and disco music. Participants should wear flexible clothing and athletic shoes and bring an exercise mat. There is a limit of 30 participants and the program fee is \$11.

Residents of the Town of Bethlehem and Bethlehem Central School District are eligible to attend. Pre-registration is required and can be made at the Elm Ave. Park office between 8:30 a.m. and 4:30 p.m. or by calling 439-4131.

## Newcomers lunch

Tri-Village Welcome Wagon will hold its first luncheon of the season Wednesday, Sept. 19, at the Normanside Country Club, Elmsere. The noontime luncheon will provide members and prospective members with an opportunity to acquaint themselves with activities planned for the new season.

Babysitting will be available at the First United Methodist Church, 428 Kenwood Ave., Delmar. Reservations and requests for babysitting must be received by Sept. 11. Call Lynn Corrigan at 439-3090 for reservations and Marilyn Moran at 439-8268 for information.



Herman Schnurr

## Takes bank post

Darrell G. Houston of Glenmont has been elected vice president and corporate security director of Key Banks, Inc., an Albany-based regional holding company.

Houston recently retired from the U.S. Army with the rank of colonel and 24 years of service. He earned a BS degree from the U.S. Military Academy, West Point, an MBA degree from Syracuse University, and a degree from the Army War College. His civic and professional associations include membership in Rotary International, volunteer work with the Boy Scouts of America and Little League, and membership in several U.S. Army associations. He and his wife, Patricia, have four children.

## A name change

Herman Schnurr of Delmar has announced Schnurr and Jackson Associates, Inc. has the new name of the Albany-based advertising and communications firm that was previously called Herman Schnurr and Associates, Inc.

"The name change reflects the evolution of the agency into a far broader-based organization than just one person's name can fully express," explains Schnurr, president of the agency. "It recognizes the contributions of founding partner Jesse Jackson. And by keeping the name Associates, we reflect the contributions of the rest of the people as well."

## Car damaged

A Slingerlands woman told Bethlehem police last Monday that her 1984 model car, parked at an apartment complex on Blessing Rd., had been damaged according to police reports. The car was scratched on the door and hood the report said.

## In the swing

The Tri-Village Squares will kick off their new season with a display at the Bethlehem Public Library during the month of September. The square dancing club is beginning its second year.

## Bikes

Aug. 26. — Stolen, from woods behind Brightonwood Rd., unlocked, registered.

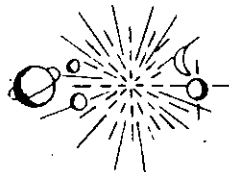
Aug. 30. — Found, in woods near Brightonwood Rd., bike reported stolen earlier.

## GENESIS TRAVEL INC.

Tollgate Center • 1565 New Scotland Rd.  
Slingerlands, New York 12159

439-0773

complete travel arrangements



Personal, Professional and Experienced  
Travel Consulting

Serving the Bethlehem - New Scotland Area

## Consistent Quality

Custom Framing Art Works

# Northeast Framing

439-7913

Weekdays 10-5:30

Sat. 10-4

Framing With Flair

# SPECIAL SALE

# SAVE 40%

- Flowering Shrubs
- Evergreens



# Jeffers Nursery, Inc.

OPEN TUESDAY THRU SUNDAY  
1900 New Scotland Rd.  
Slingerlands  
439-5555

## Just in Time for Back to School!

Clothing can be expensive but it doesn't have to be if you **Shop Our Sale.**

Just buy a pair of Candies, Lord Issac or Nova Jeans or cordoroy and you'll get the **second pair for half price\***.

Easy & economical. But hurry — sale ends **Sept. 11th.**

\*Least expensive pair.

# the Clothes Circuit

TOWNE SQUIRE PLAZA  
GLENMONT, N.Y. 434-1712

HOURS: Mon.-Fri. 10-9  
Sat. 10-5:30



Fall Is Here  
And We Are  
Repairing . . .

Snowblowers

and

Chainsaws

All Makes and Models

Pickup & Delivery

## "LOOK CLOSELY AT TORO."

**TORO**

Haven't you done without a Toro long enough?®



ARNOLD PALMER

Don't Wait!

Drop them off today or call us and we'll pick it up.

Your complete service center.

# ADAMS HARDWARE

AT

THE 4 CORNERS, DELMAR

439-1866

HOURS:

M-F 7:30 a.m. - 8:30 p.m.

Sat. 7:30 a.m. - 5 p.m.

Sun. 10 a.m. - 4 p.m.

OPEN 7 DAYS A WEEK

## LAST CALL AT SUMMER PRICES

Beat The Holiday Rush

### REUPHOLSTERY SALE

ANY SOFA  
**\$59<sup>50</sup>** PLUS MATERIALS

ANY CHAIR  
**\$39<sup>50</sup>** PLUS MATERIALS

CALL NOW FOR A FREE ESTIMATE

**ROTHBARD'S**  
REUPHOLSTERY BY EXPERTS

Since 1925

TRI CITIES 765-2361  
HUDSON 828-1051

SARATOGA 877-7722  
AMSTERDAM 842-2966

# Will Bethlehem's Two-Family Homes Be Banned?

## A PUBLIC HEARING

is scheduled to consider removing Residential two-family dwellings from the "A" Zone Residential areas of the town.

### WHEN

Wednesday, Sept. 12, 1984, at 8:00 p.m. at the Bethlehem Town Hall, 445 Delaware Ave., Delmar.

## THIS AFFECTS YOU BECAUSE

1. All existing two-family dwellings in the "A" zoned areas will become "Non-Conforming" and existing homes will no longer be converted to two-family.
2. New Residential two-family homes will no longer be built in the convenient "A" residential areas (*except by obtaining a Variance from the Appeals Board*).
3. The vacancy rate is non-existent. In fact there are waiting lists for Duplex and other rental housing.
4. Where are our Bethlehem retired lifelong residents, families and singles going to live if this proposition is passed?
5. Land values in the "A" zone will be seriously affected.
6. In North Bethlehem there could be a problem with over taxing the available sanitary sewer services. (*This should be dealt with on a local basis and not penalize the entire town.*)

### ARE THE HOUSING NEEDS OF THE COMMUNITY COMMUNITY BEING MET?

The Planning Board should be directed to review the housing needs of the community and encourage the building of Duplex and other rental housing.

## DO YOU CARE?

Voice Your Concerns, Sept. 12, 8:00 p.m. at the Bethlehem Town Hall

or  
Write: The Bethlehem Town Board  
445 Delaware Ave., Delmar, N.Y. 12054

**Concerned Citizens of the Town of Bethlehem**

*First*



**NATIONAL SAVINGS BANK**

# ANNUAL 10k RUN

6.2 MILES



STARTING POINT ...

National Savings Bank  
The Four Corners, Delmar

**11:00 am Sunday  
September 16, 1984**

To benefit the Bethlehem Lions Club  
**EYES FOR SIGHT PROGRAM**

**REGISTRATION:** Pre-registration at 9:30 a.m., day of race or

Mail entry forms to:  
**SALLY MURPHY  
NATIONAL SAVINGS BANK  
90 State St.  
Albany, N.Y. 12207**

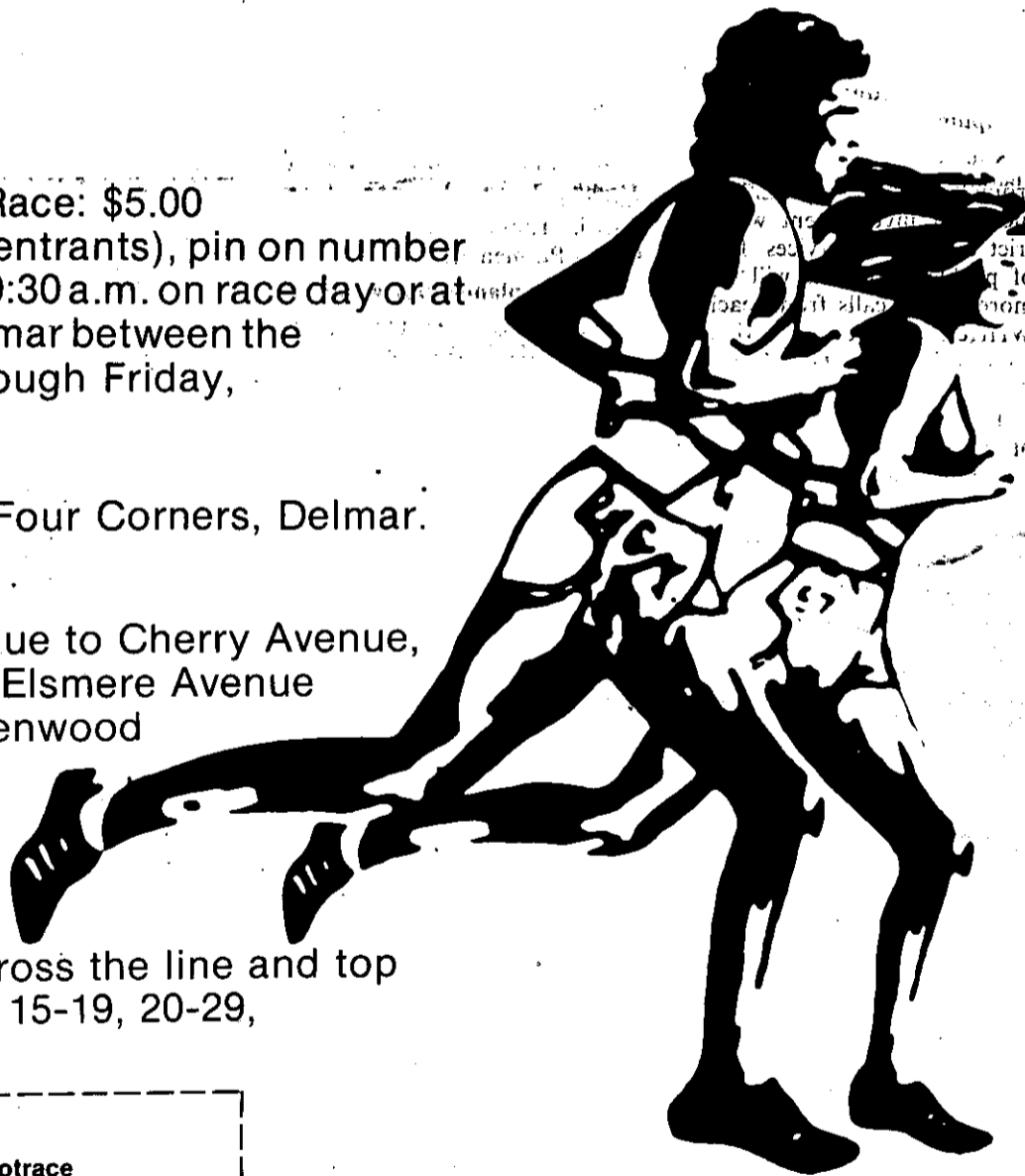
Make checks payable to:  
**NATIONAL SAVINGS BANK RUN**

**ENTRY FEE:** Mail Entries: \$4.00 — Day of Race: \$5.00  
Packets will include Race T-shirt (for first 300 entrants), pin on number and course map. Packets may be picked up at 9:30 a.m. on race day or at National Savings Bank, The Four Corners, Delmar between the hours of 9:00 a.m. and 3:00 p.m. Monday through Friday, beginning Friday, September 7, 1984.

**REPORT TO:** National Savings Bank, The Four Corners, Delmar.

**COURSE:** From NSB, down Kenwood Avenue to Cherry Avenue, across to Elm Avenue to Delmar By-Pass to Elsmere Avenue to Delaware Avenue to Oakwood Place to Kenwood Avenue and back to bank.

**AWARDS:** First male and first female to cross the line and top male and female in the following categories: 15-19, 20-29, 30-39, 40-49, 50+.



**OFFICIAL 1984 ENTRY FORM**

National Savings Bank 1st Annual Run (10K/6.2 miles) Footrace

Name: \_\_\_\_\_ Age on Race Day \_\_\_\_\_ Sex: M or F  
Street: \_\_\_\_\_ City: \_\_\_\_\_  
Zip: \_\_\_\_\_ Date: \_\_\_\_\_ Telephone Number ( ) \_\_\_\_\_

In consideration of your acceptance of this entry, I hereby for myself, my heirs, executors, administrators and assigns waive and release any and all claims for damages I may have against the sponsors, National Savings Bank, and race officials, their representatives, accessors, and assigns, arising out of any and all injuries suffered by me while participating in the Run. I attest and verify that I am physically fit and have trained for the completion of the race and my physical condition has been verified by a licensed medical doctor.

Signature: \_\_\_\_\_ CIRCLE T-SHIRT SIZE: S M L XL

Parent's Signature If under 18: \_\_\_\_\_

MAIL ENTRY BLANK AND \$4:00 CHECK TO: Sally Murphy, National Savings Bank, 90 State St., Albany, N.Y. 12207

For further information call

**Ed Cheeseman 439-9988 or**

**Sally Murphy 463-4261**

**Between 9 a.m. and 3 p.m. daily**

**Sanctioned by the Adirondack Association of TAC**

# RCS revises its handbook

The most recent Gallup poll reveals an increase in the confidence Americans have in their public schools, teachers and administrators. In an effort to maintain this confidence at a high level, administrators at the RCS Senior High School have been reviewing and revising rules and regulations in all areas of student responsibility. Recent proposals to the Board of Education have resulted in major revisions to important areas of the senior high handbook.

In the area of credit for graduation, the board approved a major change that will place greater responsibility on students and challenge them to perform up to their potential. Students who fail a course will be required to repeat that subject for the entire time required for that course. Beginning in September, students will not be allowed to move to the next course level without passing a pre-requisite course.

In the area of discipline, several changes have been approved. Violation of smoking regulations will result in immediate in-school suspension and an in-school parent conference. Vandalism will be dealt with in a speedy and effective manner; involved students will be required to pay all damages in addition to the regular disciplinary action.

Students found in possession of alcohol or drugs will be confronted with strict penalties and increased involvement with district counseling services. Parents of problem students will receive more phone calls from teachers. Written reports will also be increased. Students will be encouraged to refrain from excessive displays of affection; persistent offenders will be disciplined and their parents notified. Stu-

dents who use foul or abusive language toward any staff member will be suspended out of school.

Administrators will strictly enforce all existing Board of Education rules and regulations. Mandatory in-school conference will be required for parents of students who are chronic discipline problems before their child is allowed to return to regular classes. Concerned parents are encouraged to contact high school administrators or guidance counselors whenever they have questions.

## Campers back from lake

A number of area young people attended the Reformed Church of America's Camp Fowler on Sacandaga Lake this summer. The camp's program, which includes a variety of activities including religious education, recreation, waterfront activities, arts, crafts, music and various camping experiences, has as this year's theme "God is Always Present."

Emphasizing particular activities each week throughout the summer, the campers may choose the conference that especially appeals to their interests such as Athletic Week or Fine Arts Week. Attending various weeks during July and August were Chris Stanton, Glenn Lasher, Susan Newkirk, Karen Pickup, JoAnne Goes, Cindy Conrad, Michael Jordan, Kenny Layman, Tracy Layman, Jonathan Janssen, Paul Parisi, Tammy Parmenter and Curtis Parmenter.

## Retreat planned for women

The Albany District team of the United Methodist Women is sponsoring a retreat entitled "A Journey Toward Solitude" Friday and Saturday, Sept. 14-15 at Camp Pinnacle in the Helder-

bergs. Beginning at 2 p.m. Friday with registration and welcoming tea, the 30-hour retreat will include special programs, a hayride and bonfire. The United Methodist Women of the South Bethlehem United Methodist Church are encouraging as many women as possible to participate. Those unable to attend both days but would like to take part in the weekend are invited to join a car pool which is being arranged. The women will depart from the church parking lot, Willowbrook Ave., South Bethlehem, at 7:30 a.m. to arrive at the camp for breakfast. Those wishing information or reservations may call Jean Canuteson, 767-9058. Reservations must be made by Sept. 6.

## Hayride and campfire

The "Adults Only" Fellowship group of the First Reformed Church of Bethlehem have begun making plans for the season. The first activity scheduled for fall will be a hayride. Last year's ride being such a big success, the group has scheduled another for Saturday evening, Sept. 15. Plans call for a hayride in the Helderbergs, a bit of singing, a lot of laughter and just relaxing and socializing around a campfire under the stars. If this sounds like a pleasant way to spend a Saturday evening, then you're invited. Adults should contact Colleen Janssen, 767-3406, or Jean Kaser, 767-2243, by Sept. 12. The cost is \$1.50 per person.

## Busy week for Seniors

Next week promises to be a very active one for the South Bethlehem-Selkirk Sunshine Senior Citizens. This Sunday, Sept. 9, they will be participating in the Senior Citizens Craft and Food

## NEWS FROM SELKIRK AND SOUTH BETHLEHEM

Barbara Pickup 767-9225



contacting Ann or Frank Everingham, 767-9938.

The following day, Sept. 10, the seniors will gather at the Henry Hudson Town Park on Winnie Road in Selkirk for their regular monthly meeting. The meeting will begin at noon with a covered dish picnic.

On Wednesday, Sept. 12, the seniors will be traveling to Springfield Mass. to attend the Eastern States Exposition. They will depart by bus from the First Reformed Church of Bethlehem parking lot at 8 a.m. Reservations are still available. Those interested may contact Bob Mayo, 767-3006, or Gus Traeger, 767-9279.

Festival being held from 12 noon until 5 p.m. at Crossgate Mall in Albany. They will have a table with a selection of handcrafted and homemade items. They hope the community will support their efforts by attending or through contributions of articles to sell. Proceeds from the day's event will benefit their travel program. Donations may be made by

## The Delmar Bootery

Your Complete Shoe Repair Center  
4 Corners - Delmar

<b>HOURS:</b>	Tuesday	10:00-5:30
	Wednesday	10:00-5:30
	Thursday	10:00-6:30 (extended hours)
	Friday	10:00-5:30
	Saturday	10:00-2:00

If you miss us use our shoe drop at Adams Hardware 7 days a week.

**439-1717**



## Josette Blackmore Interiors

We are proud to offer a fine selection of fabrics, furniture, and accessories for your home.

JBI We happily provide Home Consultation.

Studio Hours by Appointment  
**765-2224**



## The Crystal Chandelier

At Delaware Plaza  
439-4643

## "TOUCH ME LAMPS"

By

## TOUCH-LITE™

Your Touch Turns It On

- 29"-30" Brass
- Beige Wrapped Pleated Shade
- Saves Energy
- No need for expensive three way bulbs
- Uses Ordinary light bulbs

**SALE**  
**\$49.95**

Reg. \$65.95

NEW HOURS: Monday-Friday 10-9  
Saturday 10-6  
Sunday 12-4

Master Charge • Visa  
American Express • Layaways

## Garden Shoppe

AFFILIATE OF J. P. JONAS INC.

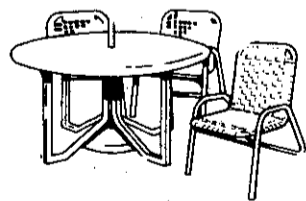
**GLENMONT**  
Feura Bush Road  
439-8169

**GUILDERLAND**  
Albany-Carman Road  
356-0442

STORE HOURS: MON.-FRI. 9-6, SAT. 9-5, SUN. 10-4

## CASUAL FURNITURE

SAVE \$165.00



- Astra Strap Set 4 chairs and a table
- Special savings on accessory pieces

with a set purchase

**NOW \$355.00**

## SPECIAL SAVINGS 10-6-4 LAWN FOOD

- Gives fast green up for your lawn. 40 lb. bag.

**\$3.99 bag. Reg. \$5.49**

## FRESH FLOWERS

Roses, carnations and more arriving daily

**AFFORDABLE PRICES**

## HARDY MUMS

- Extra large full of buds and blooms
- Grown in our nursery

**3 for \$7.88**

## STACK CHAIRS

- Heavy duty vinyl coated to last a lifetime

**4 for \$69.99**

\$21.99 each

## JUST ARRIVED BIRD FEEDERS

We stock the area's largest selection of feeders, feed and accessories.

## Satellite Feeder

- Great feeder for the small birds
- Complete with hanger

**\$7.99 Reg. \$9.99**

## FALVO'S WE SELL U.S. PRIME BEEF

Mon.-Fri. 9 am to 6 pm  
Sat. 8 am to 5 pm  
Prices effective thru 9/8/84

WE ACCEPT FOOD STAMPS

**SUPER BUYS AT FALVO'S - SERVE THE BEST**

PERDUE GRADE A WHOLE CHICKENS <b>67¢ LB.</b>	US PRIME TOP ROUND LONDON BROIL <b>\$2.99 LB. CENTER CUTS</b>	US PRIME RUMP ROAST <b>\$2.59 LB.</b>
PERDUE GRADE A CHICKEN PARTS <b>BREASTS \$1.49 lb.</b> <b>LEGS 79¢ lb.</b> ALWAYS FRESH	10 LBS. OR MORE US PRIME <b>GROUND CHUCK \$1.29 lb.</b> <b>GROUND ROUND \$1.79 lb.</b>	US PRIME CHOICE WHOLE BONELESS <b>N.Y. STRIP \$3.59 LB.</b> 1 4/16 LB. AVG.
WHOLE LEAN PORK CHOPS <b>\$1.39 LB.</b> CUT UP AT NO CHARGE	WHOLESALE CUTS US PRIME <b>BOTTOM WITH EYE \$1.99 LB.</b> <b>TOP ROUND \$2.19 LB.</b> <b>TOP SIRLOIN \$2.29 LB.</b> CUT UP AT NO CHARGE	DELI-DEPT. ALL LEAN BOILED HAM <b>\$2.39 LB.</b> IMPORTED SWISS CHEESE <b>\$2.99 LB.</b>

PHONE ORDERS TODAY 439-9273

Committed To Your Gardening Success





Menands lugist George Tucker, who represented Puerto Rico in the 1984 Winter Olympics, gives a lesson to Darcy Langford, lying on the sled, as

Scott and Todd Porter look on. Tucker gave a slide presentation at the Voorheesville Library last Friday.

# Mensching blasts budget 'gesture'

By Tom Howes

Can a board that recently voted a 60 percent cut in the real estate tax rate also be considered "unduly" conservative in its budgetary procedures?

It's hard to argue with a tax cut. Even those who would usually don't mind having one. But to at least one member of the active political opposition in Voorheesville, the real estate tax rate drop in this year's budget represents the potential for irresponsible fiscal management.

Armed with his own analysis of the 1984 village budget and a projection for 1985, that charge has been brought by village resident Thomas Mensching, an unsuccessful candidate for trustee in last March's election.

Voorheesville's 1984 tax break, in which the village lost approximately \$75,000 in income by cutting the real estate tax rate from \$3.80 per \$1,000 of assessed valuation to \$1.45 per \$1,000, was made possible when the village received an additional \$75,000 from Albany County in surplus county sales tax revenue, and when it decided to include as income a \$200,000 surplus built up in recent years. Rather than set the sales tax money aside, the village board voted in the tax cut.

That break could amount to a one-year gesture, according to Mensching, with next year's tax rates climbing back to pre-1984 levels or higher, if the village's expenditure estimates are correct and it doesn't receive more county sales tax revenue than it budgeted for.

But that's the rub. Are the figures in the budget accurate? "If the budgeted expenditures are padded and if they get more sales tax, they'll have no problem," Mensching said, adding that he has no way of knowing.

In any event, he feels the board should have kept the tax rate at its prior level and used the \$75,000 to begin a fund for a fire truck

## VOORHEESVILLE

purchase, estimated at \$150,000, a point he made during the budget hearing process and campaign.

Village Mayor Richard Lennon admitted the budget estimates were conservative but said "there's a natural tendency to underestimate resources and overestimate expenditures." Voorheesville has "historically used conservative estimates," he said.

"We'll probably get more tax surplus than we thought we'd get," he said, pointing to the 1983-84 figures. In that year, the village budgeted \$140,000 as income from sales tax, but with three months to go in the fiscal year exceeded that amount by \$32,000. For 1984, the board budgeted \$150,000 for that item. "Right now, I'm not looking for a tax increase," he said.

The real estate tax cut is "an attempt to share the surplus with the people who paid for it," he said, adding that it was "politically something of a risk to reduce taxes that much. We don't want to be caught short."

Will the board be caught short? "We'll just have to get to the end of the year to find out," Lennon said.

"There is no provision for fire truck funds in this year's budget," Lennon said, but the board is in the process of setting up reserves for the replacement of equipment, including fire trucks.

"The fire department has been working on that since last year," Lennon said. "It'll take a period of two or three years to get a truck, and I'd like to pay for it when it gets here."

## Speaker at AARP

Dr. Albert Sica, executive secretary of the board of the State Education Department pharmacy, will speak on generic and brand-name drugs at the meeting of the Tri-Village chapter of the American Association of Retired Persons at the First United Methodist Church, Kenwood Ave., Delmar, at 12:30 p.m. on Sept. 18.

**TACS** **THE AUTO COLLISION SPECIALISTS, INC.** **TACS**  
 "Our Reputation Speaks For Itself . . . We Care"  
 • Expert Collision & Frame Repair • Professional Paint Jobs  
**FREE ESTIMATES**  
 Reasonable Rates - All Repairs Guaranteed  
 • Batteries • Good Year Tires • Accessories •  
**24 HOUR TOWING**  
**462-3977**  
 Rt. 9W (1/4 mi. So. of K-Mart) **TACS**

## Raffle at Picnic

St. Thomas Parish will hold a drawing on Sept. 9 for a \$100 gift certificate from McCarroll's Meat Market. The second prize winner will receive 12 bottles of champagne from Fowler's Liquor Store. Many other prizes, including a men's 10-speed Royce Union bike, will be awarded at the parish family picnic.

## Albany Auto Radiator

Drive-in Service

Expert Radiator Repairs  
Towing Service Available

1758 Western Avenue  
Albany

**456-5800**

Mon. - Fri. 8:00 - 5:00

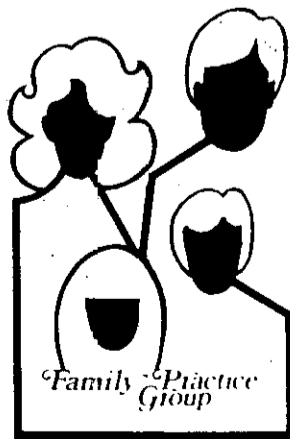
## The Family Practice Group of the Albany Medical College

1 Clara Barton Drive, Albany, N.Y. 12208

Proudly Announces the association of **Pamela S. Horst, M.D.**

and **William E. Maliha, M.D.**

in the practice of Family Medicine



Members of the Capital District Physician's Health Plan, Inc.

**(518) 445-5112**

Medicine, Pediatrics, Obstetrics, Gynecology, Minor Surgery, Psychiatry

**WE SPECIALIZE IN FAMILIES**

**Alice E. Fruehan, M.D., Dale E. Harro, M.D., Charles B. Eaton, M.D., Frank H. Moore, M.D.**



## CARDONA

FOR ALBANY COUNTY FAMILY COURT JUDGE

AN EVENING WITH **TONY CARDONA**  
 CANDIDATE FOR ALBANY COUNTY FAMILY COURT JUDGE

**BUFFET AND REFRESHMENTS.**

Monday, September 17, 1984  
 5:30-9:30 P.M.  
 Blanchard Post, Poplar Drive, Delmar, N.Y.

Tickets Available at Door or  
 Call: Dorine or Barry Fuller 439-1999  
 Marymel or Ed Hart 439-0037

"Sponsored by Friends of Tony Cardona"

## THE SPOTLIGHT

SUBSCRIPTION IN ALBANY COUNTY

1 YEAR \$13.00

2 YEARS \$19.00

ELSEWHERE

1 YEAR \$15.50

2 YEARS 22.00

CITY \_\_\_\_\_ STATE \_\_\_\_\_ ZIP CODE \_\_\_\_\_

NAME \_\_\_\_\_ ADDRESS \_\_\_\_\_

Please enter my  New Subscription  Renewal to The Spotlight.

MAIL TO: The Spotlight  
 P.O. Box 162, Delmar, N.Y. 12054



# Final concert set

School's in and summer is almost over! As tradition has it, the last event in the Concert-in-the-Park series will be held this Sunday, Sept. 9, from 7 to 9 p.m. on the Village Green, and will feature Gold Rush, offering a fun-filled evening of dance and listening.

The band, begun in 1975, has regularly been the band to finish the season. Composed of several Voorheesville residents Gold Rush is noted for its 50's-60's sound, but plays "something for everyone" from progressive country to Huey Lewis.

Voorheesville musicians include Bob Shutter on guitar and sax, Bill Shutter on bass guitar and Don Duncan, Jr. on drums. Rounding out the group are Frank Strait from Averill Park on sax, harmonica and acoustic guitar and Albert Mugrace of Troy on keyboard. All members of the band take turns at lead vocal as well as helping with harmony.

The band, which originally was active on the nightclub circuit, has more recently given up playing in clubs due to the shortage of good area spots that can accommodate a band their size, but has kept busy with a variety of other musical interests. Besides playing for local gatherings such as the upcoming Halloween dance sponsored by the New Salem Fire Department, the group has also done a number of benefits. Recently they participated in the celebration to mark the opening of the County Hall of Fame in Cortland and were highlighted in the accompanying three-hour television special.

## Continuing Ed starts

With the younger generation back behind the desks, the Continuing Education program of the Voorheesville Central School District is ready to give the older set a unique chance at learning

## Voorheesville NEWS NOTES

Lyn Stapf 765-2451



too. Registration for the fall season will be held on Monday, and Tuesday, Sept. 10-11, from 7 to 9 p.m. in the main foyer at the high school. Mail registration will be accepted between Sept. 10 and Sept. 15 and should be addressed to James Hladun, director of Continuing Education, Voorheesville Central Schol. Registration fees are payable at the time of registration, in person or by mail.

Most courses begin the week of Sept. 17 and feature a wide variety of educational and recreational offerings. Those interested in crafts are offered courses in stained glass, Japanese brush painting, quilting, floral design and cake decorating, while those who want to "get physical" may sign up for men's basketball, swimming, scuba diving, judo or Tone-up 84. Business skills may be sharpened with typing, Computer 1 or word processing, while those interested in something different may like beginning banjo, conversational French or Spanish, bridge, photography, dog obedience or investment strategies.

Holiday craft courses are offered in pine cone wreaths, gingerbread houses and calico Christmas, while mini-courses in estate planning, candy making and drug and alcohol education are also listed.

For more information on fees, course descriptions or dates, call the high school at 765-3314 weekdays or stop by at the high school for a brochure.

## For scouts and brownies

Girl Scouts and Brownies of the Voorheesville Neighborhood group will take to the road this week for

their annual encampment at Camp Little Notch outside Glens Falls. The group will depart Friday and return Sunday.

Signup for girls interested in becoming Brownies and Girl Scouts will be held from 7 to 8 p.m. Tuesday, Sept. 11, at the Voorheesville Methodist Church. Any girl in first grade or older may register. Leaders may sign up at that time or call Eleanor Smith at 765-4338.

A meeting for leaders will be held Sept. 17 at the home of Bea Richardson, 47 Cranberry Ct., Voorheesville, at 7:30 p.m.

## Donate to Elks sale

With their garage-yard sale approaching on Sept. 15, the Ladies Auxiliary of the New Scotland Elks is putting out a final call to those who have items to donate. Anyone wishing to contribute household items, toys, jewelry or such may leave them at the Elks Lodge above the post office any Saturday between 9 a.m. and noon, or call Diane or George Koch at 765-2030 to arrange for pick-up.

## Story hours resuming

Big sisters and brothers may be back to school, but preschoolers need not feel left out. Pre-school story hours at the Voorheesville Public Library will resume on Monday, Sept. 10, and will be held on Monday, Tuesday and Friday mornings at 10:30 a.m.

Summer may be over, but fond memories of the summer reading club will remain for the 135 students in grades K-6 who participated. Student helpers who contributed to the success of the program were Jenny and Jill Kraemer, Heidi and Cindi Siver, Melissa Ten Eck, Cortney Langford, Jennifer Appleby, Wendy Meilinger, Kati Pakenas, Christin Veeder, Judy Smith, Holli Shufelt, Pam Harms, Erin Sullivan, Teri Stewart, Amy Strohmmer, Amy Sangiorgi, Debbi Burns, Cathy Reilly, Stacey Ascone, Nicole Leach, Jennifer Willey, Chris Herzog, Bob Sarr, Bob Stapf, John Halligan, Tom Kurkjian, Craig Panther, Joe Genovesi, David Lancor and Sarah Bissell.



Becky Bryden and Florence Wright make "dunk bags" to be used to wash dishes at the Neighborhood Encampment their Troop 16 and other Voorheesville Girl Scout troops will attend this week at Camp Little Notch.

## Pen pals visit

Elise Oksendal, 13, of Osteras, Norway, visited the Bethlehem Public Library recently with her friend, Marisa Range, daughter of Mr. and Mrs. Michael R. Range of Delmar. The Range and Oksendal families have been

acquainted since 1971 when the girls' fathers were classmates at UCLA.

Elise and her classmates are corresponding with students at the Bethlehem Middle School. The Norwegian children's addresses were distributed through the pen pal club at the Bethlehem Public Library.

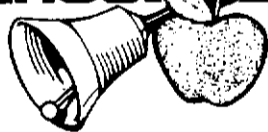
# JONES SERVICE

14 Grove Street  
439-2725

Complete Auto Repairing  
Foreign & Domestic Models  
Road Service and Towing

- Tuneups • Automatic Transmissions • Brakes
- Engine Reconditioning • Front End Work
- Gas Tank Repairs • Dynamic Balancing
- Cooling System Problems • N.Y.S. Inspection Station

## BACK TO SCHOOL NEEDS



SPECIAL BACK TO SCHOOL HOURS:  
8:30 to 9 P.M. M - F.  
\*\*\*\*\*

## WE'RE READY FOR BACK TO SCHOOL

with pens, pencils, crayons, wirebound notebooks, pocket folders, drafting supplies, mechanical drawing pencils, tape, glue, national ring binders

FREE: PARKER PEN (\$2.98 value) with \$10.00 purchase of school supplies.

## JOHNSON STATIONERS

239 Delaware Ave.  
Delmar 439-8166

# Stonewell Plaza

ROUTES 85 AND 85A NEW SCOTLAND ROAD, SLINGERLANDS

DAVIS STONEWELL MARKET  
FOR FABULOUS FOOD 439-5398

HOME OF SHOP WALLACE QUALITY MEATS WHERE LOWER PRICES AND HIGHER QUALITY ARE #1. 439-9390

DOUBLE COUPONS  
Every Tues. & Thurs. See Details in Store

- \* Fine Fare White Toilet Tissue, 4 pk. .89
- \* Empress Chuck Lite Tuna In Water, 6.5 oz. .59
- \* Skippy Creamy or Chunky Peanut Butter, 18 oz. 1.39
- \* Fine Fare Grape Jelly, 18 oz. .79
- \* Campbells Pork 'N Beans, 16 oz. .39
- \* Thomas English Muffins, 6 pk. .99
- \* Bay Brand Paper Plates, 100 Ct. .79
- \* Golden Grain Mac & Cheddar Cheese, 7 1/4 oz. 3/1.00
- DAIRY
- \* Crowley 2% Milk, Gallon 1.59
- \* Crowley Orange Juice, 1/2 Gallon 1.49
- \* Fine Fare Butter Quaters Lb. 1.79
- \* Grade A Large Eggs, 1 dozen .79

## FROZEN FOODS

- \* River Valley Orange Juice, 12 oz. .99
- \* Banquet Fried Chicken, 32 oz. 2.79

## PRODUCE

- \* Carrots, pkg. 4/100
- \* Califlower, home grown hd 1.29
- \* Cabbage, lb. .17
- \* Mushrooms, Cello 12 oz. .99
- \* Plums, lb. .39

## SAVE DURING WALLACE'S

## BACK TO SCHOOL BONANZA

- Beef Liver, Store Sliced .68 lb.
- Chicken Breast 1.48 lb.
- Chicken Breast, boneless 2.48 lb.
- Pork Loin End, Roasts or Chops 1.48 lb.
- Country Style Ribs 1.48 lb.
- Center Cut Chops 1.88 lb.
- Sirloin Steak, boneless "From the Loin" 2.98 lb.
- Bottom Round Roasts 1.78 lb.
- Rump Roasts 1.98 lb.

## 28 LB. FREEZER PACKAGE

- 3 lb. Ground Chuck
- 2 lb. London Broil
- 3 lb. Pork Chops
- 2 lb. Slab Bacon
- 2 lb. Hot Dogs
- 3 lb. Chuck Steak
- 5 lb. Chuck Patties
- 6 lb. Chicken
- 2 lb. Italian Sausage

Why Pay More Elsewhere! **\$44.49** 23% Savings Over Reg. Prices

FREEZER WRAPPED

GROUND CHUCK  
10 lbs. or more 1.28 lb.  
5 lb. Box Patties 1.58 lb.

GROUND ROUND  
10 lbs. or more 1.68 lb.  
5 lb. Box Patties 1.88 lb.

N.Y. Strips, Whole 2.98 lb.

## SAVE ON SCHOOL LUNCHES

- German Bologna 1.28 lb.
- American Cheese 1.98 lb.
- Weaver Sliced Chicken 2.18 lb.
- Imported Ham 2.28 lb.

NOT RESPONSIBLE FOR TYPOGRAPHICAL ERRORS

# A stress test for you

Over the past six years I have conducted stress management workshops for corporate executives and lineworkers, professional and lay people, public and private employees. One of the tools I developed in helping workshop participants begin to identify their sources of stress was the "Personal Stressor Scale." I offer the scale to you for your own self-administered assessment of your personal stress levels. Note: This is *not* a clinical tool, but rather a training exercise to help increase one's awareness of stress and its sources.

## Personal Stressor Scale

Each item may contribute to excessive levels of stress or an inability to return to natural reacting levels. Answer each item according to your own best judgement. Write the appropriate number in the space to the right.

### Medical Disorders in Past 10 Years:

Severe (3)	Moderate (2)	Mild (1)	None (0)	
Heart				_____
Lungs				_____
Digestive System				_____
Kidneys, urinary tract				_____
Reproductive system				_____
Pregnancy and childbirth				_____
Brain or spinal cord				_____
Glands				_____
Bones				_____
Muscles				_____
Teeth				_____
Eyes				_____
Ears, nose and throat				_____
Skin				_____
Mental or emotional				_____
Other				_____

### Diet:

Very High (3)	High (2)	Somewhat High (1)	Not High (0)	
Deficiencies				_____
Salt intake				_____
Sugar intake				_____
Cholesterol intake				_____
Caloric intake				_____

### Addictive Substance Use:

Heavy (3)	Moderate (2)	Light (1)	Never (0)	
Smoking				_____
Drinking				_____
Drugs				_____

### Seat Belt Use

Never (3)	Sometimes (2)	Usually (1)	Always (0)	
				_____

## NEW DIMENSION

Interiors

### What is New Dimension Interiors?

A complete design and decorating service for all commercial-contract and residential needs.

### What can they do for me?

We offer creative ideas and layouts and help the client materialize theirs. We can give a room, home, office or business a totally new updated look. No project is ever too small. Best of all, we work with your budget—no matter how large or small.

### What do they offer?

Furniture  
Accessories - art forms  
Window Treatments  
Wall coverings  
Kitchen cabinets & fixtures  
Bathroom Fixtures  
Countertops  
Carpet/Flooring  
Custom Formica  
Lighting  
Custom Laquering  
Upholstery/slipcovers  
So Much More

For more information please call...

518-767-2472

## Family MATTERS

Norman G. Cohen



### Exercise

Never (3)	Infrequent (2)	Somewhat Frequent (1)	Regular (0)	
Strenuous (doubling pulse rate)				_____
Limbering Up				_____
Muscle-building				_____

### Home Environment:

High (3)	Moderate (2)	Low (1)	None (0)	
Overcrowding				_____
Lack of privacy				_____
Mealtime "tension"				_____
Arguments between family members				_____
Degree of household/family responsibility				_____
Discontent with family life				_____
Other				_____

### Work Environment:

High (3)	Moderate (2)	Low (1)	None (0)	
Amount of danger encountered				_____
Unsatisfactory working conditions				_____
Problems with co-workers				_____
Unsatisfactory pay				_____
Fear of job loss				_____
Pressure to produce				_____
Level of job responsibility				_____
Discontent with job				_____
Other				_____

### Other Environmental Conditions:

Severe (3)	Moderate (2)	Mild (1)	None (0)	
Air pollution in home or job area				_____
Noise pollution in home or job area				_____
Automobile traffic congestion in home or job area				_____
Degree of natural disasters in area				_____
Neighborhood crime level				_____
Climate				_____
Other				_____

### Social and Economic Conditions:

High (3)	Moderate (2)	Low (1)	None (0)	
Financial security				_____
Dissatisfaction with residence				_____
Dissatisfaction with social life				_____
Incidence of being discriminated against (race, sex, etc.)				_____
Other				_____

### Mental and Emotional Factors:

Severe (3)	Moderate (2)	Mild (1)	None (0)	
General anxiety level				_____
Degree of worrying				_____
Mood swings				_____
Phobias				_____
Depressions				_____
Lack of concentration				_____
Perfectionism				_____
Temper outbursts				_____
Self-doubt				_____
Other				_____

### Total

 <b>Newgraphics Printers</b> 125 Adams Street, Delmar, N.Y. Call Gary Van Der Linden (518) 439-5363	Wedding Invitations Social Announcements • Typesetting Layout • Design • Stationery • Brochures Business Cards • Newsletter • Pamphlets NCR Forms • Envelopes • Free Estimates Offset Printing
---	---

HEY KIDS

Want Some Great Fun?

Join our Saturday morning

Junior Bowling Program

(for ages 8 and above)

BEGINS SEPTEMBER 15th

Registration — Sept. 4th, 5th, and 8th  
9 a.m. to 12 noon.

SEPTEMBER 8th

10:00 a.m. to 12 noon

FOR ALL NEW JUNIOR BOWLERS

DEL LANES

BETHLEHEM/ELSMERE (OPPOSITE DELAWARE PLAZA)

PHONE: 439-2224

FREE  
Learn to Bowl Clinic

Although the Personal Stressor Scale was primarily designed to help you identify your sources of stress, your total score may give you some idea of how much stress you are responding to from day to day. More importantly, your Personal Stressor Scale can serve as a guide for you to reduce your stressors, then at least you will know where to concentrate your use of stress management skills to minimize the negative effects of those stressors.

Total Score	Stress Level
over 100	Very High
70-100	High
40-70	Moderate
Under 40	Low

### Charged in break-in

Two men have been charged with burglary, third degree, a felony, in connection with an illegal entry Friday afternoon at a business on Old River Rd. in Glenmont, according to Bethlehem police reports. Mark S. Conroy, 20, of Albany and Anthony L. Bonneau, also 20, of Glenmont were sent to the Albany County Jail after their arraignment on the charges Friday in Bethlehem Town Court, the report said.

The president of the company arrived to find the building alarm ringing, police said, and then discovered a panel broken out in a rear overhead door. When police arrived at the scene, accompanied by Det. Colin Clark's bloodhound, the two suspects were found nearby, according to the report.

### Gallery is open

Posters Plus Galleries is now open on the west side of Stuyvesant Plaza. The gallery has consolidated its Robinson Square and downtown Schenectady locations at the new site and will continue to provide original artwork from area and international artists, antique and contemporary posters, prints and reproductions. The store also will offer interior wall design service, both commercial and residential, as well as custom framing and museum mounting. Owners are John and Chris Greenhut, who began the enterprise more than eight years ago.

An exhibit by an international artist is slated for the store's grand opening in October.

Your best friend  
is choking,  
and  
all you can hear  
is your own  
heart  
pounding.

Every second counts.  
Would you know  
what to do?  
Red Cross will  
teach you what you  
need to know  
about life-saving.  
Call us.

We'll help.  
Will you?



Yellow  
**Golden Bananas**  
4 Lbs. **1.00**

U.S.D.A. Choice - Boneless Beef  
**Bottom Round Roast**  
Also  
Shoulder or  
Chuck Fillet  
Lb. **1.49**

Super **GRAND UNION** Coupon  
Chunk Style - In Oil or Water  
**Star-Kist Light Tuna**  
6 1/2-oz. Can **48¢**  
No Minimum Purchase Required With This Coupon  
Good Sept. 4 Thru Sept. 8. Limit One Coupon Per Customer.

6-Pack - Great Taste Low Price  
**Meister Brau Beer**  
12-oz. Cans  
Plus Deposit **1.79**

Kraft - Quarters  
**Parkay Margarine**  
1-Lb. Pkg. **59¢**

Super **GRAND UNION** Coupon  
All Purpose  
**Pillsbury Flour**  
5-Lb. Bag **58¢**  
No Minimum Purchase Required With This Coupon  
Good Sept. 4 Thru Sept. 8. Limit One Coupon Per Customer.

Armour - Golden Star  
**Boneless Turkey**  
Butter Basted  
4 to 6 Lbs. Lb. **1.39**

Famous Westside  
**Fresh Honeydews**  
Lb. **33¢**

Regular or Diet  
**Coke or Tab 6-Pack**  
16-oz. Btls.  
Plus Deposit where required. **1.88**

Check the meat.  
Check the produce.  
Check the groceries.

Look at these great specials!  
But that's only a few.  
Where are the rest?

In the new **Price Finder for Specials**.  
It takes only minutes to check your shopping list  
with it, find the best prices for what you need.  
It's easy to use, and you don't have to wait for the  
weekly food ads for specials.

The **Price Finder for Specials** is free at your  
Grand Union store every day.

The specials on this page are just  
a sample of what you'll find in the  
**Price Finder for Specials!**



Assorted Flavors  
**Sealtest Ice Cream**  
Half Gal. Cont. **1.99**

Big Roll - Colors or Decorator  
**Bounty Paper Towels**  
92 Sheet Roll **68¢**

Italian Style - Hot or Sweet  
**Italian Pork Sausage**  
In Pkgs. of 3-Lbs. or More.  
Ea. Lb. **1.68**

100% Pure - Frozen From Florida  
**Tropicana Orange Juice**  
12-oz. Can **99¢**

Water Added  
Deli Sliced **Cooked Ham**  
Lb. **2.38**

Garden Style  
**Ragu Spaghetti Sauce**  
32-oz. Jar **1.28**

# Grand Union is changing.

Not Responsible For Typographical Errors. We Reserve The Right To Limit Quantities. For Store Information Call Toll Free, 1-800-221-1835. Prices and Offers Effective Tues., Sept. 4 thru Sat., Sept. 8, 1984.

MOST GRAND UNIONS ARE

**OPEN 24 HOURS**

**ELSMERE** — Delaware Plaza

**GLENMONT** — Town Squire Ctr.

PHONE: 438-5534





**Pianist Morey Hall of Elsmere will give a benefit concert of classical music on Sept. 16 at 2 p.m. at the Albany Institute of History and Art.**

**Reception**, sponsored by the Elsmere School Community Organization-PTA and the Bethlehem School Board of Education, to welcome Dorothy Whitney as principal, Elsmere School, 7:30 p.m., following 7 p.m. ESCO-PTA meeting.

**Tri-Village Welcome Wagon Coffee**, for area women newcomers and new mothers, home of Marie Brown, 33 Sheffield Dr., Delmar, 8 p.m. Reservations, 439-9679.

**Blood Pressure Clinic**, sponsored by New Scotland Kiwanis, United Methodist Church, Maple Ave., Voorheesville, 9-11 a.m. and 7-9 p.m.

**Video Workshop**, John Huges will talk about video graphics, Bethlehem Public Library, 7-9 p.m. Pre-registration, 439-8111.

**Slingerlands Home Bureau**, second Tuesday, Delmar Reformed Church, 7:30 p.m.

**Delmar Rotary**, meets Tuesdays at Starlite Inn, Rt. 9W, Glenmont, 6 p.m.

**Voorheesville Girl Scouts and Brownies**, sign-up for girls in first grade and older, Voorheesville Methodist Church, 7-9 p.m.

**WEDNESDAY, SEPTEMBER 12**

**South Bethlehem-Selkirk Senior Citizens**, meeting and covered dish picnic, Henry Hudson Town Park, Winne Rd., Selkirk, noon; trip to Eastern State Exposition, Springfield, Mass., 8 a.m.-6 p.m.

**Stuffed Animal Pet Show**, for children 3 years and younger, stories and songs, Bethlehem Public Library, 10 a.m. Registration, 439-9314.

**Red Men** (oldest patriotic organization in U.S.) second Wednesday, St. Stephen's Episcopal Church, Elsmere, 7:30 p.m.

**Bethlehem Elks Auxiliary**, meets at lodge, Rt. 144, Cedar Hill, 8 p.m. second Wednesday.

**Bethlehem Channel Cablecast**, "Conversations" about book banning with librarian Carol Desch and Vicki Dworin, 6 p.m.

**THURSDAY, SEPTEMBER 13**

**Winterizing Your Garden**, sponsored by Albany Cooperative Extension, Bethlehem Public Library, 7:30 p.m. Free.

**Delmar Fire Dept. Ladies Auxiliary**, regular meeting second Thursday of every month except Aug., at the fire house, 8 p.m.

**Bethlehem Memorial V.F.W. Post 3185**, meets second Thursday of each month, post rooms, 404 Delaware Ave., Delmar. Information, 439-9836.

**Elsmere Fire Co. Auxiliary**, meets second Thursday of each month, at the fire house, Poplar Dr., Elsmere, 8 p.m.

**New Scotland Democratic Social Club**, second Thursday, 8 p.m.

**FRIDAY, SEPTEMBER 14**

**Bethlehem Channel Cablecast**, "Kids Kaleidoscope" tours town hall, 6 p.m.; "Scripting" for video tape by Steve Swartz, 7 p.m.

**Citizen of the Year Dinner Dance**, honoring Thomas Roe of Voorheesville, Guilderland and Elks Lodge, Carmen Rd., 6 p.m. \$11 tickets.

**Retreat**, So. Bethlehem U.M.W., Camp Pinnacle, Sept. 14 and 15.

**Tennis Tournament**, sponsored by Bethlehem Tennis Assoc., Bethlehem Middle School courts, 5 p.m.

**QUILT**, Quilters United in Learning Together, meeting at Delmar United Methodist Church, 428 Kenwood Ave., Delmar, 9:30 a.m.-2 p.m.

**SATURDAY, SEPTEMBER 15**

**Tennis Tournament**, sponsored by Bethlehem Tennis Assoc., Bethlehem Middle School courts, noon.

**Hay Ride**, adults only, First Reformed Church of Bethlehem, 7:30 p.m.

**Dungeons and Dragons Club**, meets every Saturday, children's room, Bethlehem Public Library, 10 a.m.-12:30 p.m. Registration, 439-9314.

**Auction**, of radio and electronic items, at John W2ANB Longley's barn, 1623 New Scotland Rd., Slingerlands, 9 a.m., rain date announced on 146.64, 8-9 a.m.



**Betsy Palmer will portray the colorful courtesan Alicia in the new stage version of the classic Lerner and Loewe musical Gigi. The musical comes to Proctor's Theatre, Schenectady, for eight performances, Sept. 18-23.**

**Nature Studies**, Sharing Autumn with Your Children, 10 a.m.; Exploring Fall Changes, 2 p.m., Five Rivers Environmental Education Center.

**Spaghetti Dinner**, with salad bar and homemade desserts, Community United Methodist Church, 1499 New Scotland Rd., Slingerlands, 5-7 p.m. \$4.50 donations, under 6 free. Reservations, 439-1766.

**Auction, Fair and Chicken Barbeque**, to benefit Trinity United Methodist Church, Rt. 143, Coeymans Hollow, 10 a.m.-7 p.m. Booth rental, 767-3073.

**Steak Roast**, Selkirk Fire Co. No. 1, Maple Ave., Selkirk, noon-10 p.m.

**For AUTO INSURANCE call:**

**Donald F. Schulz**

163 Delaware Avenue  
Delmar, N.Y. 12054  
Phone: 439-2492

Nationwide Mutual Insurance Co., Columbus, Ohio

**LOSE WEIGHT ONCE AND FOR ALL.**

Now you can take it off and keep it off.

Our hospital will present a uniquely different program for adults that can put you in control of your weight for the rest of your life. There are no special diets. No pills. No quick-fix reducing sessions. Just a simple, no-nonsense, medically-approved program where you'll learn to shed excess pounds with a variety of weight control techniques.

**Free invitation meeting Tuesday, September 11, 6 p.m. at St. Mary's Hospital of Troy**

"One-half mile from the Collar City Bridge; just 2 blocks off Route 7"

Call 272-5000, ext. 240 for pre-registration

**The Music Connection**

*Songs and Classical Guitar Duets to enhance your special occasion.*

Joan Mullen

Camille Wing

439-3701

**ST. THOMAS THE APOSTLE CHURCH**

**ANNOUNCES**

Registration for parish religious education classes for pre-school through grade 12 including First Eucharist and Confirmation will be held on Friday, September 7 and Tuesday, September 11 from 7 to 9 p.m. in the school auditorium, corner of Kenwood Ave. and Adams Place. 439-3945.

St. Thomas The Apostle Church  
35 Adams Place  
Delmar, N.Y. 12054

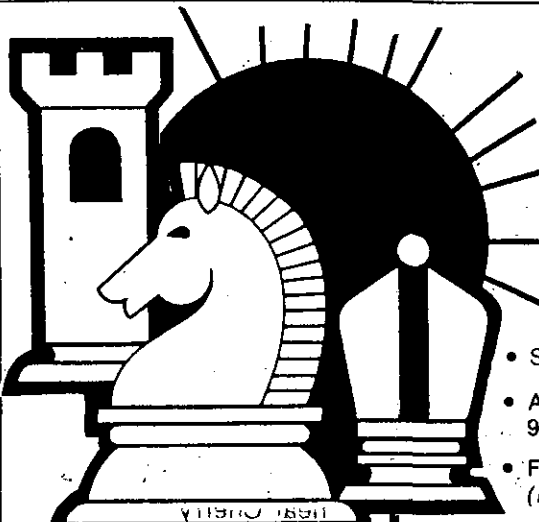
**Summer's Over — What's Your Next Move? CHECK US OUT!**

**BETHLEHEM LUTHERAN CHURCH**

85 Elm Ave., Delmar  
Rev. Warren Winterhoff  
439-4328

**FALL SCHEDULE BEGINS SEPT. 9**

- Sunday School - 9:15 a.m.
- Adult & Teen Bible Classes 9:15 a.m.
- Family Worship - 10:30 a.m. (Nursery care provided)
- Choir Practice — every Thurs. Children — 6:30 p.m. Adults - 7:30 p.m.
- Confirmation - every Tues. (Begins Sept. 18, 6:30 p.m.)
- Saturday Bible Classes 7:45 to 9:00 a.m.



**STOP!**

**LOOK**ing for a local church with quality Christian Education?

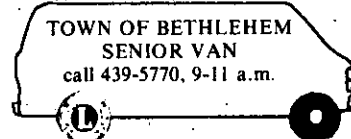
**LISTEN** for the church bells

at  
10 A.M. on Sunday, September 9th from  
**SLINGERLANDS UNITED METHODIST CHURCH**

Sunday School classes for ages 4 through 18. Child care for those under 4 years. For further information, contact 439-1766.

**SENIOR CITIZENS NEWS AND EVENTS CALENDAR**

- Sept. 7, Legal clinic, 11 a.m. - 1 p.m., call town hall for reservations.
- Sept. 11. Van shopping trip to Stuyvesant Plaza, \$1, call 439-5770 between 9 and 11 a.m., pick-ups start at 9 a.m.
- Sept. 13, Meeting, movie: "Mr. Mom," room 106, Bethlehem Town Hall, 1:30 p.m.
- Sept. 17, Trip to Anthony's Park Plaza Restaurant, bus leaves 11:15 a.m. Reservations required.




- every Monday: Grocery shopping at Delaware Plaza for residents of Elsmere, Delmar, Slingerlands 9:00-11:30 a.m.
- every Thursday: Grocery shopping for residents of Glenmont, South Bethlehem, Selkirk area 9:00-11:30 a.m.
- every week day: 9:00-4:00 p.m. the van is on the road taking people to doctors offices, for hospital treatments and other errands.



**Delaware Plaza, Delaware Avenue**

Other convenient offices throughout New York State Member FSLIC

**CANTARELLA SCHOOL OF DANCE**  
THE OFFICIAL SCHOOL OF THE BERKSHIRE BALLET



**PRE-BALLET-Children 4-6,**  
A charming introduction for your child to the grace and beauty of Classical Ballet.

**BALLET-Ages 7 and older,** a variety of classes taught in the Cecchetti Method of Classical Ballet.

**JAZZ-Invigorating dance in the style of Broadway and Current films.**

**TAP-Children and adults enjoy moving to that beat.**

**An Established School Since 1955. Our graduates have gone on to dance with such prestigious companies as: The Joffrey, Pennsylvania, Ohio and Boston Ballet. American Ballet Theatre just to name a few.**

69 Warehouse Row, Corner of Fuller Rd.  
Over Silvestri Cleaners

**FOR REGISTRATION 482-5224**

**CLASSES BEGIN SEPTEMBER 8th**

Auditions for Berkshire Ballet's Nutcracker October 6th at 2:00 PM

## AREA EVENTS & OCCASIONS

Events in Nearby Areas

**WEDNESDAY, SEPTEMBER 5**

**Convention,** Greene County Volunteer Firemen's Association, sponsored by D.M. Hamilton Steamer Co. #2, Cox-sackie, Sept. 5-8, parade Sept. 8.

**German Day,** German music, food, history and dancing, outdoors, Empire State Plaza, Albany, noon-9 p.m. Free.

**Widowed Persons Service,** of capital district, self-help group for newly widowed persons, meets first and third Wednesday, Fellowship Hall, St. Andrew's Episcopal Church, Albany, 7:30 p.m. Information, 438-6395.

**Information Night,** to acquaint students with experimental learning program, Albany Campus Center of Russell Sage College, 140 New Scotland Ave., Albany, 6-7 p.m. Information, 445-1717.

**Mendelssohn Club,** first rehearsal of male chorus, interested tenors and basses invited, classical baroque, romantic, popular and show music United Presbyterian Church, Westerr Ave., at Rt. 85, Albany, 7:30 p.m.

**Capital District Mineral Club,** meeting, public welcome, State Museum, Madison Ave., Albany, 7:30 p.m.

**William Kennedy's Albany,** 4-day celebration, featuring historic home open houses, guided tours of South End, panel discussions, lecture by William Kennedy and old fashioned Sunday in the park, Sept. 6-9. Information, 457-3907 or 462-0318.

**Concerned Friends of Hope House,** self-help and support group for parents of substance abusers, meets every Thursday, 7:30 p.m., Capital District Psychiatric Center, 75 New Scotland Ave., Albany. Information, 465-2441.

**FRIDAY, SEPTEMBER 7**

**Film Series,** "William Kennedy's Albany," Albany Institute of History and Art, 125 Washington Ave., Albany, Sept. 7 and 8, 10 a.m.-4 p.m. Free.

**Antique Flea Market,** featuring a 150-acre antique showplace, Gordon Reid's Pine Grove Farm, Duaneburg, \$2 admission, Sept. 7 and 8. Information, 895-5104.

**Grecian Festival,** featuring Greek food, imports and entertainment, sponsored by St. George's Greek Orthodox Church, Hellenic Center, 510 Liberty St., Schenectady, 5 p.m.-midnight, Sept. 7, 10 a.m.-midnight, Sept. 8 and 9.

**SATURDAY, SEPTEMBER 8**

**Garage Sale,** to benefit Albany Therapeutic Riding Center Inc., Old Slingerlands Playhouse, Rt. 443, Unionville, Sept. 8 and 9, 9 a.m.-5 p.m. Information, 489-1306.

**THURSDAY, SEPTEMBER 6**

**Psychic Fair,** featuring clairvoyant readings in astrology, palmistry, numerology, auras and psychometry for entertainment, \$11 per reading, meeting room 3, Empire State Plaza, Albany, Sept. 6 and 7, 10 a.m.-9 p.m.

**Film,** "America Lost and Found," economic and social collapse accompanying the Great Depression, New York State Museum auditorium, 12:10 p.m. Sept. 6, 1 p.m. Sept. 9. Information, 473-7521. Free.

**Stockade Villagers Art Show,** and sale, featuring more than 250 artists, Historic Stockade, Schenectady. Information, 372-5656.

**Farm City Day,** farmer's market, farm animals, milking contest, food, awards, outdoors, Empire State Plaza, Albany, 11 a.m.-4 p.m. Free.

**Weaving Demonstration,** of early patterns and techniques, by Gene Valk participation allowed, Glen-Sanders Mansion, 1 Glen Ave., Scotia, \$4.50 admission. Information, 377-8839.

**National Daughters of American Revolution,** open meeting of Tawasentha chapter, Ten Broeck Mansion, 1 p.m. Information, 439-4753.

**S.J. Willis Stamp Show and Sale,** more than 150 dealers, meeting room 6, Empire State Plaza, Albany, 11 a.m.-4 p.m. Free.

**Legion of Mary Rosary Rally,** program of songs and speakers, outdoors, Empire State Plaza, Albany, 2 p.m. Free.

**Senior Festival '84,** exhibits, baked goods, demonstrations, clowns, music and more, in honor of Grandparents Day, Crossgates Mall, Guelderland, noon-5 p.m.

**Dancing Under the Stars,** music by The Free Fall Group, outdoors, Empire State Plaza, Albany, 6:30-8:30 p.m. Free.

**Coin and Stamp Show,** sponsored by Capital District Coin Dealers Assoc., Polish Community Center, Washington Ave., Albany, 11 a.m.-5 p.m. Information, 346-2584.

**Antique Radio Club of Schenectady,** monthly meeting, Schenectady Museum, Nott Terrace Heights, 2 p.m. Information, 459-7407.

## EMPIRE STATE Ballet School

At Emma Willard School  
Now Accepting Applications for Fall Term


Beginner Thru Professional  
Children — Adults  
(children 6 years and up)

- Classical Ballet
- Pas de Deux
- Spanish Dance
- Pointe

**New! sessions in Break Dancing and other special dance sessions.**

**—Student & Professional Performances—**  
CAR POOLS AVAILABLE

For information phone 518-274-4440, ext. 292  
or write: Ballet, Emma Willard School, Troy, N.Y. 12180



## JOAN MULLEN STUDIO

"A musical education with the guitar"

**Instruction In Classical & Folk Guitar At All Levels**

439-3701




**MONDAY, SEPTEMBER 10**

**Sales Seminar,** sponsored by Albany-Colonie Regional Chamber of Commerce, Best Western Turf Inn, 205 Wolf Rd., Albany, 1-4 p.m. Information, 434-1214.

**Reception,** honoring Francis Barish, author of "A Guide for the Disabled Traveler," Legislative Office Building, Albany. Information, 434-4103.

**Workshop and Lecture,** "Lessons from the Holocaust," Molinari room, Siena College Library, 2-4 p.m. Importance of the Holocaust for Christians, lecture by Dr. Littell, author, Serra Hall, Siena College, Loudonville, 8 p.m. Information, 783-2300. Free.

**Film,** "Hiroshima Mon Amour," directed by Alain Resnais, French with English captions, Albany Public Library, 161 Washington Ave., Albany, 7 p.m. Free.

**TUESDAY, SEPTEMBER 11**

**Lecture,** by Lawrence Wittner, author of "Rebels Against War — American Peace Movements," Albany Public Library, 161 Washington Ave., Albany, noon. Free.

**Safe Place,** support group for families and friends of suicide victims, meet at 727 Madison Ave., Albany, 7:40 p.m. Information, 482-0799.

**Bread and Puppet Theatre,** Interarts Colony, Palenville, Sept. 11 and 12, information, 678-9021.

**Capital Dist. Assoc. of Occupational Nurses,** meeting at Century House, Rt. 9, Latham, 6 p.m.

**WEDNESDAY, SEPTEMBER 12**

**Small Business Start-Up Workshop,** sponsored by Albany Cooperative Extension, Small Business Administration, and Norstar BANK, Sheraton Airport Inn, 8:30 a.m., \$12 registration fee. Registration information, 447-4385.

**Country Music,** R.C.A. recording artist to be announced, outdoors, Empire State Plaza, Albany, 7:30-9:30 p.m.

## A GREAT PLACE TO BE AFTER SCHOOL

school's out, inc.



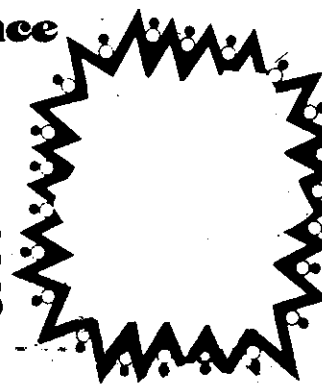
**a non-profit, after school program**

**Now Registering**  
428 KENWOOD AVENUE  
Delmar, N.Y. 12054  
439-9300

**TAP - BALLET  
JAZZ  
GYMNASTICS  
DANCERCISE**

## Eleanor's School of Dance

456-3222  
489-0028




## DANCE INTO OUR 65TH ANNIVERSARY SEASON

ENROLLMENT by interview or audition September 5th-6th-7th from 2 until 8 P.M.

Fun For Fours  
Children's Division  
Teen Program  
Adult Curriculum

**THE HALLENBECK SCHOOL of the DANCE**  
"A Legend in Albany"

40 COLVIN AVE. 438-3664 ALBANY, NEW YORK 12206



## BATON TWIRLING GROUP NOW FORMING

- weekly baton twirling lessons
- marching instruction
- children ages 5 and up

For information call Maryalice Svare 439-7284. Certified teacher, N.Y. state experienced baton twirler and director of twirling and marching groups.

\*\*\*\*\*  
\* **Deadline** \*  
\* **for** \*  
\* **Calendar** \*  
\* **items** \*  
\* **is Friday,** \*  
\* **5:00 p.m.** \*  
\*\*\*\*\*

## Library selection near

A decision is expected within a week on a new director for the Bethlehem Public Library, according to Ethel Birchenough of Slingerlands, chairman of the library board of trustees. Interviews have been conducted, she said, and the five trustees are expected to make a choice among the final three candidates at their monthly meeting Monday.

Mrs. Birchenough said the board, acting as a search committee, had advertised the position in *The New York Times* and "had gotten word out around the state" that a successor was being sought for John S. Hodges, who publicly announced last week that he had accepted the position of director of the Hewlett-Woodmere Public Library in Hewlett, L.I. Hodges had headed the Bethlehem library since May, 1981.

## School board asks: Challenge, anyone?

By Caroline Terenzini

The Bethlehem Central school board went around once again Thursday on the question of who should serve on a committee that is to be named to review the district's Challenge program for "exceptionally capable" pupils.

The makeup of the committee was the topic at an executive session Thursday morning following a business meeting scheduled for approval of the district's tax warrants. As a result of the discussion, board president Sheila Fuller said, the seven-member board agreed to make a public appeal for volunteers to serve on the committee (in addition to those already proposed). The board then will choose the committee members, Mrs. Fuller said, adding that she hopes the committee "can be set up" when the board meets Sept. 19.

The tax warrants, a formality for the board, call for a total levy in the Town of Bethlehem of \$12.32 million, with another \$835,000 to be collected from property owners in the New Scotland portion of the district. These levies require a tax rate of

\$159.39 per \$1,000 of assessed valuation for Bethlehem — up 5.4 percent — and \$267.05 per \$1,000 in New Scotland, up 4.5 percent. Thanks chiefly to an unexpected large increase in total assessed valuation in the Town of Bethlehem, the tax hikes are about half what was projected at the time the district's budget was first proposed — and defeated — in May.

Following a second budget defeat in June, the school board adopted a contingency budget and on July 11 submitted nine spending propositions to district voters, five of which were approved. Not until August did the district learn that the tax base had grown a surprising \$2.4 million in the year, about double the change projected back in April when the budget was being put together. The bigger tax base means a smaller tax bite for the individual property owner.

The 1984-85 spending plan as it now stands totals \$16.36 million,

**Anyone wishing to serve on the committee to review BC's Challenge program is asked to call 439-3102 by Sept. 7.**

only about \$420,000 less than the budget originally proposed in May.

In other business Thursday, the board made the following appointments: Barbara Cox, to teach at Hamagrael Elementary School; Ann-Marie Bacher, at Slingerlands Elementary School; Sheila Keen, as an art teacher at Clarksville Elementary and the high school; Frances Samoriski, middle school physical education, and Marilyn Valentini, remedial reading.

### Gymnastics to start

Bethlehem Parks and Recreation Dept. will offer a gymnastics program for children in grades 2-12, beginning Tuesday, Sept. 11 and continuing through Nov. 20. Participants will meet in Bethlehem middle school boy's gym as beginners from 6:30 to 8 p.m.; and as intermediates and advanced from 8 to 9:30 p.m. Pre-registration is required and can be by telephone or in person at the park office, 439-4131, weekdays. There is a limit of 45 gymnasts per session and a fee of \$14 per participant. This program is open to residents of the town and school district.

### DAR to meet

Gansevoort chapter NSDAR will hold its monthly meeting at Ten Broeck Mansion in Albany, Monday, Sept. 10 at 12:30 p.m. Mrs. Harry E. Veeder of Colonie, past regent of the chapter, will present a slide program on the Seimes Microfilm Center, which won an award in 1983.

### Book group organizes

The Bethlehem Public Library book discussion group will meet Sept. 18 at 7:30 p.m. to choose selections for monthly meetings. New members are welcome. For information call 439-9314.

### Business women meet

The Bethlehem Business Women's Club will meet Sept. 5 at 6 p.m. at the Albany Motor Inn, Rt. 9W, Glenmont. Eunice Milks, director of Mariner House, will speak.

GOOD THRU SUNDAY  
9-9-84

This Coupon  
Is Worth

\$200

When Purchasing  
Any Fabric Shower Curtain  
In Stock

Clip And Save Valuable Coupon

LINENS

By Gail

ALWAYS  
SAVINGS

Located at the Four Corners  
Kenwood Ave. & Delaware Ave.  
Delmar  
439-4979  
Open: Mon.-Fri. 9:30-9:00  
Sat. till 5:30 & Sun. 12:00-5:00  
• VISA • MASTERCHARGE  
• LAYAWAY

## ANNIVERSARY SALE

September 6th — 15th

20% off on all  
FIREPLACE FURNISHINGS

15% off on all STOVES & INSERTS

15% off on all GLASS  
FIREPLACE ENCLOSURES

40% off on all SUMMER FURNITURE

40% off on all BRASS SHOP ITEMS

in stock items only

The  
Fireside  
Shop

1991 Central Ave., Albany

## Duplexes

(From Page 1)

10 duplexes per year. During the last year the board has been asked to discuss proposals allowing for an entire development of duplexes including the Eastmount planned residence district (PRD) of 57 duplexes off Blessing Rd., the proposed Delwood Acres subdivision for 31 duplexes at Rockefeller Rd., and the informally discussed Juniper Fields subdivision proposal to include 30 duplexes on Elm Ave. at the end of the Delmar Bypass. Two-family homes, Flanagan observed, are not popular near neighborhoods of single-family homes.

Many local tenants are opposed to the zoning change because they fear that the shortage of rental housing in the Bethlehem area would become more severe and push rents skyward. Other residents are opposed to the removal of duplexes from A zones because they believe that additional housing is needed for community members who cannot afford to own a house, especially those who are young or retired. Local builder William Zautner believes that the town should address any problems with the North Bethlehem sanitary sewer service on a local basis.

Wednesday's public hearing will offer persons with strong sentiments an opportunity to participate in the decision-making process.

**Danker** Florist, Inc.  
Corner of Stuyvesant Plaza  
Allen & Central 438-2202  
489-5461 Open 'til 9 Mon.-Fri.  
Sat. 'til 6, Sun. 12 'til 5.

Weekly Special  
Sweetheart Roses Bouquet \$5.95  
Cash & Carry

Check out our —  
◆ Plush Animals  
◆ Balloon Lines

See Our Handpainted Aluminum Butterfly Collection  
**WE DELIVER**

**Carolyn Sue Miroff, R.N.**

- CERTIFIED BIOFEEDBACK COUNSELOR
- NUTRITION AND WEIGHT CONTROL COUNSELING

819 Myrtle Ave.,  
Albany, N.Y. 12208  
(518) 438-2270

**REMEMBER WHEN**

You weren't feeling well enough to do anything. But when someone put an arm around you and held your hand, you just knew you were going to feel better. Today, North America's largest full service provider of nurses and other health care professionals helps keep traditions like that alive. We remember what care is all about. We're available 24 hours a day, 7 days a week. Call us today for a free consultation and initial assessment of your home health care needs.

463-2171  
**Medical Personnel Pool.**  
An International Provider of Health Care Services.

**Professional Kitchen Designs LTD.**

Member Bethlehem Chamber of Commerce

Have your kitchen professionally planned and designed by a certified kitchen designer (Certified by N.K.B.A.)

For proven quality, craftsmanship and style — visit our showroom for the finest kitchens.

FEATURING: **Quaker Maid** CUSTOM CABINETS

One of the area's most exciting showrooms.

339 Delaware Avenue  
Delmar, New York 12054  
518-439-8008

HOURS:  
Mon. thru Thurs. 9-5  
Fri. 9-9  
Closed Sat.  
During July & August

Peter G. Merrill, C.K.D.  
Certified Kitchen Designer

### Carr gets post

Bradley G. Carr of Delmar has been appointed director of communications and public affairs for the 40,000-member New York State Bar Association. Carr holds a bachelor's degree in journalism from the University of Missouri School of Journalism, and was associate director of the Division of Bar Services for the American Bar Association for the past six years. Prior to that, he served for five years as director of public information for the State Bar of Georgia.

In addition, Carr has been director of press and public relations for the American Bar Association's Commission on Correctional Facilities and Services, and has also served as assistant director of public information for the Missouri Bar. He and his wife, Kristi, have two children.



Bradley G. Carr

### Auction and fair

Trinity United Methodist Church, Rt. 143, Coeymans Hollow, will hold an auction, fair and chicken barbecue on Saturday, Sept. 15. The variety booths will open at 10 a.m. featuring plants, books, baked goods, candy, jewelry, antiques and more. The outdoor kitchen will offer luncheon and snack items during the day. The auction will begin at 1:30 p.m. with half of the proceeds benefiting the church. The barbecue will be served from 4:30 to 7 p.m.

### Clean getaway

A thief who apparently wanted to really clean up took a vacuum cleaner from a car parked at Delaware Plaza last Tuesday morning, according to Bethlehem police reports. The machine was valued at \$550 by its Elsmere owner.

### On the cover

The first class to graduate from Delmar High School got diplomas in June, 1929, in the building at Delaware Ave. and Borthwick Ave. The class entered as sophomores in September, 1926, and had classes on the upper floor of the new elementary school. Delmar's juniors and seniors continued to go to Albany to complete high school at Albany High, Milne School, and Albany Girls Academy, and a freshman class entered the following year.

At the first commencement exercises in the auditorium were, from left: front row, Esther Crouse, Rosalie Karpel, Dorothy Cronk, Helen Orvis, Helen Schoonmaker, Naomi Albrecht; rear, John A. Lawrence, Edmund Bryant, Marga Helmolt, Edith Barnes, Dorothy Wright, Alton Barber and Cecil Wilder. The photo is courtesy of Esther Crouse, now Mrs. Harold Schultz of Voorheesville.

### Spotlight ON THE SERVICES



Pvt. James Wright

Pvt. James E. Wright Jr., whose wife, Lee, is the daughter of Lee S. Johnson of 124 Bedford Court, Voorheesville, has completed training as an Army military police specialist under the one station unit training program at Fort McClellan, Ala.

Navy Seaman Donald J. Kinisky, son of June E. Catalfu of Voorheesville, has completed recruit training at the Naval Training Center, San Diego, Calif.

### DAR to meet

The National Society, Daughters of the American Revolution, will hold an open meeting Sept. 8 at 1 p.m. in the Ten Broeck Mansion. "Honoring Our Ancestors Through Research" will be the topic of a lecture by Mrs. Elbridge Smith.

Women interested in learning about eligibility for NSDAR are encouraged to attend the meeting and call Mrs. Samuel Madison at 439-4753.

### Parenting session set

The Minna Brever group of the Albany chapter of Hadassah will meet at Bethlehem Public Library on Sept. 18 at 8 p.m. A program, "Nourish Your Child, Mind, Body and Soul," will be presented.

A panel featuring Laura Kagan, Nan Windmueller and Phyllis Silverman will discuss three aspects of parenting. The program is free and open to the public.

# Spotlight COUPONS

Extra Special Values for Spotlight Readers

**COUPON**

**DELMAR CAR WASH**  
"The Quality Wash"  
in Elsmere Behind Del Lanes

**Weekly Special • FREE Car Wash**  
With Purchase of A Coupon Book  
At Regular Price

Not Valid With Other Coupons Good Thru 9/12/84

**COUPON**

**Valinda's Delmar Florist**  
4 Corners, Delmar  
439-7726

**Grandparents Day is Sept. 9**

**FREE Carnation Bouquet**  
With the purchase of a Grandparent Arrangement

**COUPON**

**Additional \$1.00 OFF Per Yard** Our **Armstrong SOLARIAN** Already Discounted Sale Price On "REMNANTS"

**ONE COUPON PER CUSTOMER**

**Roger Smith**  
DECORATIVE PRODUCTS Since 1970  
340 Delaware Ave. Delmar, N.Y. (518) 439-9385

Coupon Expires 9/18/84

**COUPON**

**COUPONS SAVE YOU MONEY USE THESE WHENEVER POSSIBLE**

**COUPON**

**PIZZA EXPRESS**

**\$1.00 OFF ANY LARGE PIZZA**  
Cannot be combined with any other coupons or specials.  
Please Mention Coupon With Phone Orders  
Offer Ends 9/18/84

Delaware Plaza **WE DELIVER** 439-2244

**COUPON**

**\$5.00 OFF** (per gallon) **HILCHIE'S SERVITAR**  
OUR BEST INTERIOR LATEX PAINT

235 Delaware Ave. Delmar, N.Y.  
Coupon Good Til 9/19/84

More Than Just a Hardware Store

**COUPON**

**MERRY-GO-ROUND BOOK EXCHANGE**  
121 Adams Street Delmar 439-0163

**IF YOU HAVEN'T BEEN IN YET - NOW'S THE TIME!**  
Trade in your pre-read paperbacks and get 25% of their cover price as credit. (Regularly 10% on books not purchased here). We reserve the right to refuse any book.

**50% OFF PRE-READ PAPERBACKS**  
**10% OFF NEW BOOKS AND SPECIAL ORDERS**

Expires September 11, 1984

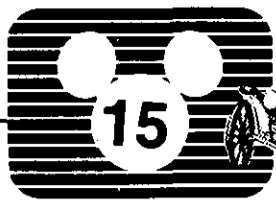
**COUPON**

**\$10.00 OFF ANY FLOOR LAMP IN STOCK**

**LAMPS & SHADES**

1978 Central Ave., Colonie  
Mon. thru Sat. 10 a.m. - 5 p.m.  
Wed. and Fri. til 8 p.m.  
With This Coupon Offer Ends 9/11/84 Not Responsible For Typographical Errors





Cable TV Subscribers Only.  
4 days starting this Thursday.

# WATCH THE DISNEY CHANNEL FOR FREE.

Mary Poppins, Tron, Dumbo, Herbie Goes Bananas and The Absent-Minded Professor are showing free on The Disney Channel Thursday thru Sunday.

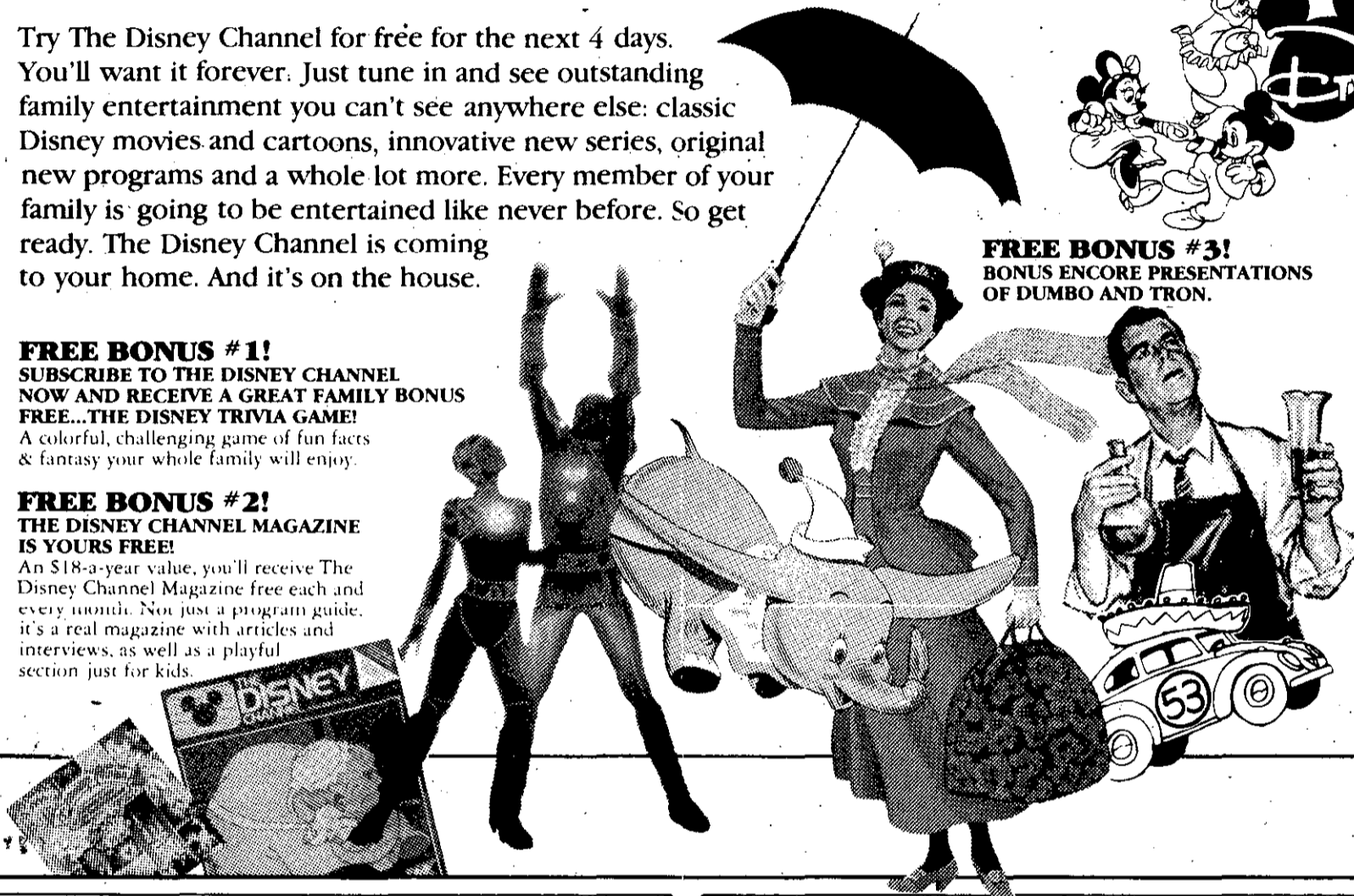
Try The Disney Channel for free for the next 4 days. You'll want it forever. Just tune in and see outstanding family entertainment you can't see anywhere else: classic Disney movies and cartoons, innovative new series, original new programs and a whole lot more. Every member of your family is going to be entertained like never before. So get ready. The Disney Channel is coming to your home. And it's on the house.



**FREE BONUS #3!**  
BONUS ENCORE PRESENTATIONS OF DUMBO AND TRON.

**FREE BONUS #1!**  
SUBSCRIBE TO THE DISNEY CHANNEL NOW AND RECEIVE A GREAT FAMILY BONUS FREE...THE DISNEY TRIVIA GAME!  
A colorful, challenging game of fun facts & fantasy your whole family will enjoy.

**FREE BONUS #2!**  
THE DISNEY CHANNEL MAGAZINE IS YOURS FREE!  
An \$18-a-year value, you'll receive The Disney Channel Magazine free each and every month. Not just a program guide, it's a real magazine with articles and interviews, as well as a playful section just for kids.



THURSDAY, SEPTEMBER 6		FRIDAY, SEPTEMBER 7TH		SATURDAY, SEPTEMBER 8TH		SUNDAY, SEPTEMBER 9TH	
6:00 AM TO 10:00 AM:	Good Morning, Mickey! Mickey Mouse Club, Mousercise, Donald Duck Presents, Welcome To Pooh Corner, You and Me, Kid and New! Animal World	6:00 AM TO 10:00 AM:	Good Morning, Mickey! Mickey Mouse Club, Mousercise, Donald Duck Presents, Welcome To Pooh Corner, You and Me, Kid and New! Animal World	6:00 AM	Featurette: Greta, The Misfit Greyhound	6:00 AM	Featurette: The Not So Lonely, Lighthouse Keeper
10:00 AM:	Movie: A Boy Called Nuthin'	10:00 AM:	Movie: Jiminy Cricket Theater	7:00 AM TO 10:30 AM:	Good Morning, Mickey! Mousercise, Welcome To Pooh Corner, Wish Upon A Star, Donald Duck Presents, and You and Me, Kid	7:00 AM TO 10:00 AM:	Good Morning, Mickey! Mousercise, Welcome To Pooh Corner, Contraption and Donald Duck Presents
12:00 PM:	Movie: Mother Is A Freshman	12:00 PM:	Movie: Mary Poppins	10:30 AM	Movie: Aladdin and the Magic Lamp	10:00 AM:	Movie: The Absent-Minded Professor
2:00 PM:	Movie: Kit Carson and the Mountain Men	2:30 PM:	Movie: Napoleon and Samantha	12:30 PM:	New! Animal World	11:45 AM:	DTV
3:45 PM:	DTV	4:00 PM TO 7:00 PM:	Welcome to Pooh Corner, Mickey Mouse Club, Donald Duck Presents, Rin-Tin-Tin, New! Animal World and EPCOT Magazine	1:00 PM:	Movie: The Painted Hills	1:00 PM:	Movie: Five Weeks In A Balloon
4:00 PM TO 7:00 PM:	Welcome to Pooh Corner, Mickey Mouse Club, Donald Duck Presents, Rin-Tin-Tin, New! Animal World and EPCOT Magazine	7:00 PM:	Movie: Dumbo	2:15 PM:	DTV	3:00 PM:	New! Animal World
7:00 PM:	Movie: The Absent-Minded Professor	8:30 PM:	Mouseterpiece Theater	2:30 PM:	The Edison Twins	3:30 PM:	Disney Studio Showcase
8:40 PM:	Mouseterpiece Theater	9:00 PM:	Movie: Superdad	3:00 PM:	EPCOT Magazine	4:30 PM:	Series: Big Bands At Disneyland
9:00 PM:	Big Bands at Disneyland	10:45 PM:	DTV	4:00 PM:	Movie: The Horsemasters	5:30 PM:	Mouseterpiece Theater
10:00 PM:	Steve Allen's Music Room	11:00 PM:	Movie: Five Weeks In a Balloon	5:30 PM:	Disney Family Album	6:00 PM:	Movie: Mary Poppins
11:00 PM:	Movie: Tron	THE DISNEY CHANNEL Family entertainment you can trust.		6:00 PM:	Five Mile Creek	8:30 PM:	Movie: Tiger Town
<b>CALL NOW! SEE THE DISNEY CHANNEL FREE!</b>				7:00 PM:	Movie: Herbie Goes Bananas	10:00 PM:	EPCOT Magazine
				8:40 PM:	Mouseterpiece Theater	12:30 AM:	Disney Family Album
				9:00 PM:	Movie: Tron		
				10:45 PM:	Movie: The Great Dictator		

SEE THE DISNEY CHANNEL FREE ON CABLE CHANNEL 15!

Adams Russell CABLE SERVICES-NY **CALL NOW! 283-6362**  
Be sure to ask about our special limited-time discount offer on installation.

**\$4.95 Installation Special\***

\*Adams-Russel cabled areas only for addition of The Disney Channel. Offer expires 9/14/84.

© MCM:XXXIV Walt Disney Productions

# Parish comes to Elsmere

## TIMES REMEMBERED

Allison Bennett



St. Stephen's Episcopal Church looked like this in the Twenties and Thirties. The first services were held in a former blacksmith shop located about 100 yards west of the railroad underpass.

St. Stephen's Episcopal Church in the Elsmere section of Delmar has been the spiritual home of Episcopalians of the Tri-Village area since the turn of the century. And, as is true of most of the churches in this area, it found its beginnings in the faithfulness and devotion of some of Delmar's early citizens. Though many of us think of St. Stephen's as a fairly young church in an historical sense, it was 76 years ago, in 1908, that a group of dedicated men met at the residence of Stewart Douglas with the intention of establishing a congregation of the Episcopal Church in Delmar. This was at a time when women still wore ankle-length skirts, men had celluloid collars, and the horse and wagon was the favored mode of transportation over the new-fangled automobile that was just beginning to be seen occasionally on the dirt roads that led through the area.

Early attempts to build a church on land acquired in Elsmere near the D&H railroad station suffered a setback, but through the efforts of Douglas, William A. Glenn and Dr. John Washburn, lay readers from The Cathedral of All Saints in Albany read the offices of the church and priests of the church brought out the sacraments for the faithful few. At this time, the leadership and devotion of many familiar Delmar names were of great importance. To recall only a few, the family names of Glenn, Blanchard, Rook, Pember, Flather, Hoffman, Petrie and Casey stand out.

The congregation was incorporated in April of 1909 and took the name of St. Stephen, the first of the saints to give his life in the cause of Christianity. For over 12 years the group maintained themselves as a mission congregation in union with the Episcopal Diocese of Albany and they worshipped in a ramshackle building that had formerly served as a blacksmith shop.

In 1922 Dr. Roeliff H. Brooks was rector of St. Paul's Church in Albany and priest-in-charge of St. Stephen's Mission. Through his tireless efforts and the active concern of members of St. Paul's, the little mission in Delmar became a full parish and set about raising \$10,000 to build an adequate church building. On All Saints Day, 1926, the cornerstone of the original church was laid at the corner of Elsmere Ave. and Poplar Dr., the present location. Various pastors of St. Paul's continued to serve the congregation until it was financially able to support a resident rector of its own. In 1938, the Rev. John J. Paulsen became the first rector of St. Stephen's Church.

Originally the area around the small villages of Delmar and Elsmere had been semi-rural in character, but after World War II this quickly became a suburban community on the edge of a large city. By this time, too, the small church structure had begun to overflow. In 1948 expanded facilities were obtained by building a new entrance to the church and basement at a cost of \$15,000.

In the fall of 1952, when the rev. Charles H. Kauffuss succeeded Father Paulsen as rector, and

**Alteri's**  
Fine Dining and Service for Years and Years  
Rt. 9W, Glenmont, N.Y. 436-0002

**Prime Rib, (Sunday Only)**  
While They Last ..... 9.95

**Shrimp Scampi** ..... 6.95  
Boneless Charbroiled 10 oz.

**Strip Steak** ..... 7.25

**Baked Haddock w/Butter Sauce** ..... 6.25  
Boneless

**Chicken Cacciatore** ..... 6.50

COUPON  
Large \$  
**Shrimp Cocktail**  
or  
**Stuffed Clam Appetizer**  
This coupon entitles each person at your table who orders an adult dinner to receive a Large Shrimp Cocktail for 75¢ per person. Only one coupon necessary. Good through 11/30/84 Not Valid With Any Other Promotion. **75¢**

RESERVATIONS APPRECIATED  
ALL MAJOR CREDIT CARDS ACCEPTED

A directory of popular restaurants recommended for family dining in the immediate area within easy driving distance of Bethlehem and New Scotland.

**LET'S GO OUT**

**Summer Time Specials**  
- COMPLETE DINNERS -  
Served 5 to 10 p.m.

**1 1/4 lb. Lobster Dinner \$12.95**  
(Valid thru 9/8/84)

**PLUS: 5 Regular Early Bird Specials**  
served 5-6:30 p.m.

*Jusco's Stone Ends*  
Reservations Accepted  
465-3178  
Rt. 9W, Glenmont - 1/2 mile South of Exit 23

**TOLL GATE**  
IN SLINGERLANDS  
ICE CREAM & COFFEE SHOP

Home Made TOLLGATE Ice Cream

Serving  
**Lunch & Dinner**  
Every Day 11 am to 10 pm  
Regular Menu & daily specials  
20 FLAVORS, HOMEMADE ICE CREAM

**LONDONDERRY**  
Restaurant & Bake Shoppe

**Introducing Perfect Pasta**  
All Cooked To Order

**Fettucine Primavera**  
A Medley of Vegetables, with an Alfredo Sauce ..... **\$4.95**

**Fettucine Bolognese**  
A Spicy Meat Sauce ..... **\$4.95**

**Fettucine Alfredo**  
A Mild White Cheese Sauce ..... **\$4.50**

**Fettucine Al Pomodoro**  
A Mild Tomato Sauce ..... **\$4.25**

All Served With Salad Vinaigrette  
And Fresh Bakery Breads

LONDONDERRY ...  
WHERE EVEN THE ORDINARY IS ... EXTRAORDINARY.

Restaurant Hours: Mon.-Fri. 11 AM-9 PM • Sat.-Sund. 9:30 AM-6 PM  
Stuyvesant Plaza Albany  
489-2889

For Your Listening Enjoyment

*Hoogy's*  
Presents  
**Jan Mika**  
&  
**Debble Knapp**  
Thursday & Fri. 8 - 10 p.m.  
Starring Along With Our Famous  
**Pizza's, Calzones & Appetizers**  
Beer & Wine Served

*Hoogy's* 439-4420  
**VILLAGE CORNER**  
1562 New Scotland Road  
Slingerlands, N.Y. 12159  
Eat-In, Take-out, Free Delivery

Now Open

Welcome to  
*Ristorante*  
*Di Mona Lisa*

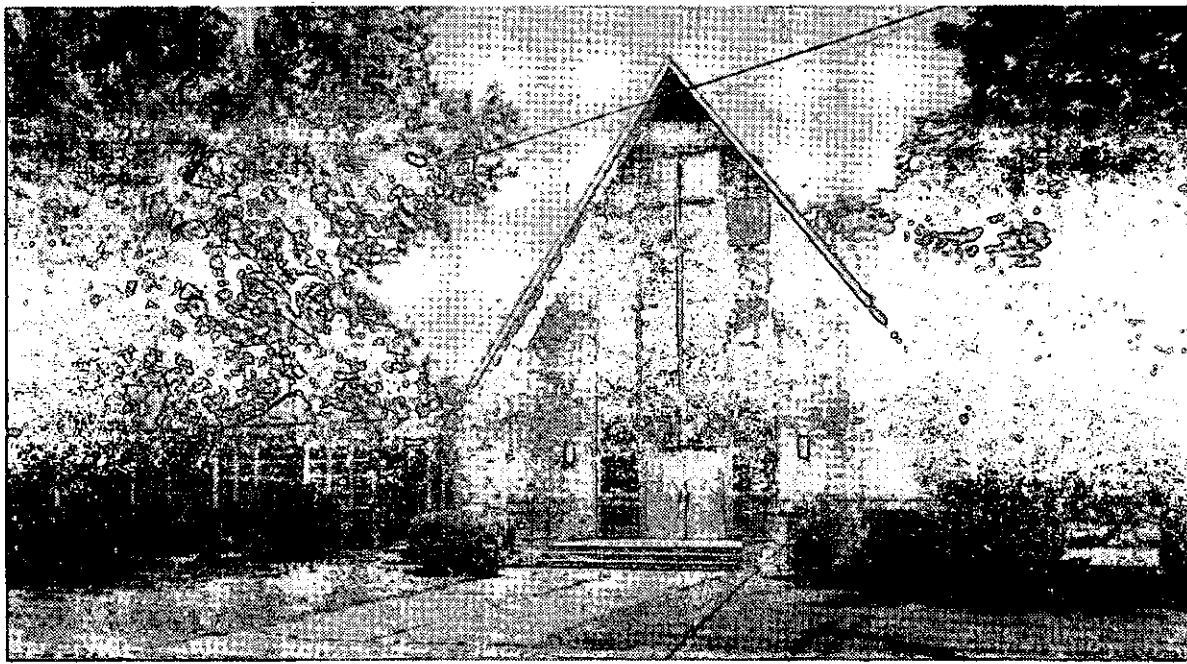
Serving...  
the Finest Italian Cuisine  
Using...  
Original Recipes Prepared To Order

- Full Catering Any Occasion
- Business Luncheons Or Any Lunch Occasion

Call For Open Dates  
Open: Tuesday-Sunday 4 p.m.-12 p.m.

556 Delaware Ave., Albany 436-7469  
Reservations are suggested

COUPON  
**Grand Opening Special**  
**\$2.00 OFF**  
Any of our Dinner Entres



Above the entrance to St. Stephen's Church today is a work of art depicting the major missionary saints of the Christian church, including St. Stephen.

when three services were necessary to accommodate the attendance, it was very evident that further expansion was needed. But further expansion of the existing building was impractical as a long-term solution. A totally new building that would be both modern and functional, with adequate parking space, seemed clearly called for, but land was lacking. The adjoining landowner, who at first declined to negotiate, finally offered to sell his residence and 2.7 acres which yielded an additional frontage of 600 feet. This the parish undertook to acquire for \$25,000, even though there was still a mortgage covering the existing church. Despite the heavy burden, the congregation determined to press on and the \$97,000 realized in a special 1955 canvass made possible the new sanctuary. This was dedicated in December of 1957 and joined to the older building by new offices and parish hall. The old church served the needs of an expanding church school. The architect for the new facility was John Brownrigg, a communicant of the parish.

On Dec. 8, 1957, the present church and parish building was dedicated by the Rev. Frederick L. Barry, who, at that time, was bishop of the diocese. On Feb. 24, 1974, with all parish debts having been paid, the church building and other parish facilities were consecrated by the Rt. Rev. Allen W. Brown, who followed Bishop Barry as the Episcopal Bishop of Albany.

Going into the church beneath the saintly figures above the entrance door, one is struck immediately with the clean lines of the modern interior, quite unlike the ancient cathedrals of England, from which this denomination

### Bail at \$50,000

Bail for Donald J. Mooney of Glenmont, charged with second-degree manslaughter in a fatal crash on Font Grove Rd. in Slingerlands on Aug. 15, has been set at \$50,000 by Albany County Judge John G. Turner. Mooney, 31, also was charged with vehicular manslaughter, second degree grand larceny, and two counts of driving while intoxicated in the incident that took the life of Donald McCoy of Albany, a passenger in the stolen truck Mooney was driving.

### Block dance Saturday

A 50's and 60's block dance will be held on Sept. 8 from 9 p.m. to 1 a.m. at the Clarksville Fire House. Tickets will be sold at the door. For information, call Nancy Peck at 797-3393 or Arlene LaDuke at 439-9653.

sprung. But any modern severity is tempered with the warmth of a wooden, beamed ceiling and the rosy tones of a brick wall behind the black marble alter. Set into the rear wall behind the altar is a magnificent stained glass window in the shape of the cross. It was given in memory of William A. Glenn, one of the parish founders

and senior warden from 1909 to 1954.

Today, as through the past years, St. Stephen's parish continues to grow, not only in size, but also in obligation and service to the church as a whole, to the Episcopal Diocese of Albany, and to the community of the Tri-Village area.

### 5 charges filed

A Glenmont man, caught by radar Thursday, has been charged by Bethlehem police with driving while intoxicated as a misdemeanor, failure to obey a police officer, speeding, leaving the scene of an accident and failure to keep right, according to police reports. The report said the man's car hit some mailboxes along Rt. 9W about 1:45 a.m. Thursday and then went off the opposite side of the road. The driver failed to stop despite the flashing lights and siren on a police car, police said.

Two other drivers were charged by Bethlehem police with DWI last week, one of whom also was speeding and the other allegedly caused minor damage to an Elsmere business, police reported.

### Vandals in court

Three Delmar youths have been petitioned into Family Court in connection with vandalism at Bethlehem's Hamagrael Elementary School two weeks ago, Bethlehem police reported. The youths, ages 13 and 14, were arrested after graffiti was spray-painted on the front of the school, the report said. Their names were withheld because of their ages.

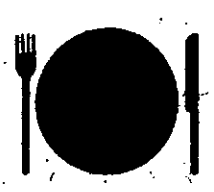
### Fitness for adults

A physical fitness class will be offered by the Bethlehem Parks and Recreation Dept. for adults from 7:30 to 8:30 p.m. Mondays and/or Thursdays, beginning Sept. 10 and continuing through Nov. 15. The class will meet at the Bethlehem Central Middle School girl's gym and will feature simple step and aerobic activities set to music. Pre-registration is required and can be made in person or by telephone, 439-4131, at the Elm Ave. Park office weekdays.

The program, open to residents of the town and school district, will be limited to the first 50 registrants. Fees are Mondays or Thursdays only, \$11, and both, \$22.

### Blood clinics resume

The Town of Bethlehem will sponsor a free blood pressure clinic from 10 a.m. to 2 p.m. and from 7 to 8:30 p.m. Tuesday, Sept. 18 at the Bethlehem Town Hall. No appointment is necessary. Senior citizens who have transportation problems are urged to utilize the town's senior van. To make an appointment call 439-5770 between 9 and 11 a.m. weekdays.



## OUR SATURDAY NITE SPECIAL

From 5 P.M. to 9 P.M.

Prime Rib of Beef	King Cut.....	10.95
	Queen Cut.....	9.95
	Jr. Cut.....	8.95

Includes

relish tray, tossed salad, potato and vegetable

# Brockley's

4 Corners  
Delmar

Mon.-Thurs. &  
Sat. 11-12:30 a.m.  
Fri. 11-1:30 a.m.

439-9810

Plenty of Parking in Rear. Dining Room entrance on the side.  
CLOSED LABOR DAY MONDAY THE 3RD

# Tool's

## Restaurant

283 Delaware Ave.

Delmar

439-9111

In Service For  
More Than 2 Decades

### DAILY ENTREE FEATURES

Includes Salad Bar

Mon. Baked Ham w/Raisin Sauce.....	5.75
Tues. Roast Turkey w/Dressing.....	5.75
Wed. Baked Meat Loaf.....	4.95
Thurs. Corned Beef & Cabbage (No Salad Bar).....	5.75
Spaghetti & Meatballs w/Garlic Bread (no potato)....	4.95
Fri. Breaded Fillet of Haddock & Scallops or haddock & Clam Strips.....	6.45
Grilled Beef Liver w/Bacon & Onion Rings or Fried Onions.....	5.75
Sat. & Sun. Roast Beef Au Jus.....	6.95
Creamed Chicken on Biscuit.....	5.45

Second Portions On Request  
\* Home Style cooking & Home Baked Goods  
\* All At Affordable Prices

### COCKTAILS—BEER—WINE

HOURS: MON. THRU WED. 7 AM — 9 PM  
THURS. THRU SUN. 7 AM - 10 PM



Star Lite

Glenmont

Restaurant  
&  
Lounge  
**463-8517**

**Your Choice Of Any Of The Following Specials**

*Friday & Saturday  
Sept. 7th & 8th*

Prime Rib, King Cut.....	\$9.95
Prime Rib & Lobster Tail.....	\$13.95
Chicken Parmiglana.....	\$8.25
Coquille St. Jacques.....	\$8.50

**CLOSED SUNDAY**

*Monday Thru Thursday  
Sept. 11th thru 13th*

Rib Eye Steak 10 oz.....	\$9.95
Fried Scallops.....	\$8.25
Lobster Newburg.....	\$7.25
Southern Fried Chicken.....	\$8.25

**Free Antipasto with Every Dinner**  
The above includes soup, potatoes & vegetable, rolls & butter, dessert & coffee. Regular menu also available.  
Dinner Hours 4:30 p.m. to 10 p.m.  
Banquet Facilities For Up To 200

**Now Serving Sandwiches In The Lounge Only**

## The Albany Motor Inn

# Sidewheeler

Restaurant and Lounge  
Rt. 9W, Glenmont, N.Y.  
(518) 465-8811

In For An

**EARLY  
SUNSET  
Dinner Special**

Served Daily 5-7 p.m.  
Regular Menu Also Available

<b>STUFFED PORK CHOPS.....</b>	<b>5.95</b>
<b>BAKED VIRGINIA HAM.....</b>	<b>5.95</b>
<b>YANKEE POT ROAST.....</b>	<b>5.95</b>
<b>BROILED RED SNAPPER.....</b>	<b>7.50</b>

*Specials include a trip to our Soup and Salad Bar*

**Breakfast and Dinner Served Daily**

**LUNCHEON BUFFET**  
Mon - Fri, 12-2 pm

**4.95**  
All You Can Eat

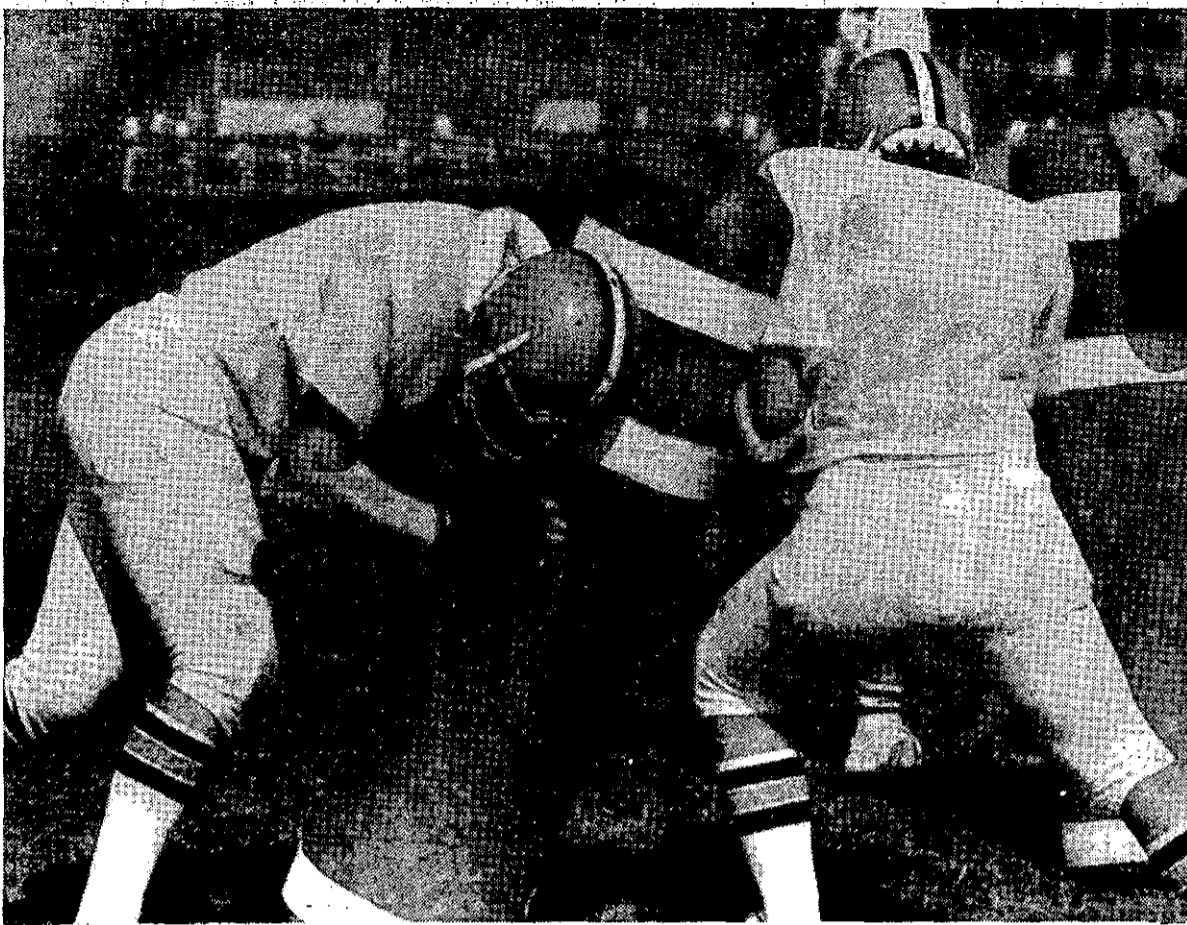
**SUNDAY BUFFET**  
12-5 pm

**7.95**  
All You Can Eat

**HAPPY HOUR SERVED IN OUR LOUNGE**  
Mon - Fri 4-7 pm  
With Complimentary Hors D'oeuvres

**PRIVATE ROOMS FOR**  
BANQUETS • MEETINGS • SPECIAL OCCASIONS

The Spotlight — September 5, 1984 — PAGE 19



Before the weekend weather turned chilly and damp, Bethlehem Central football players shed several pounds through honest perspiration in pre-season conditioning drills. Here two unidentified

linemen go one-on-one with the blocking dummy in between. The Eagles open their Suburban Council campaign Sept. 14 at Columbia.

Tom Howes

## Sodergren nearly set on starters

An errant flu bug dealt a blow to Coach John Sodergren's plans to stage a meaningful intrasquad scrimmage over the weekend, and now he will have to wait for this Saturday's test with several foreign troops to measure the combat status of his Bethlehem Central football team.

A wave of high fever and body aches struck the squad late last

week, and by the time Saturday's long-anticipated scrimmage came around, about 10 players were sidelined. "We tried," Sodergren said later. "We didn't really get a good look. We had to mix too many players. We weren't able to get the matchups we wanted to see."

The next legitimate contact session is scheduled for Saturday

morning, when the Eagles join three other teams in a four-way exercise at Ravena. Participants in addition to the hosts are Mechanicville, defending Class C Sectional champions, and Taconic Hills of the Capital Conference.

The Eagles are small in number this year, but with nearly a dozen experienced players Sodergren

## Spotlight SPORTS

can field a fairly respectable lineup. The big question is the caliber of the supporting cast, but BC coaches are confident they have some quality if the personnel stays healthy.

Sodergren is retaining 24 on his varsity roster. "All of them are capable of playing," he said this week. "In the past we've had people we were a little apprehensive about putting in, but this year I feel comfortable about playing any of them in a game. Because of the nature of our numbers, we've got to escape injuries. We're hurting somewhat in depth. We're asking backup people to learn several positions, and that slows our progress."

Sodergren says he feels "comfortable" with the defense, hence he and the coaches are devoting this week to "work, work, work on execution," meaning the offense. With Steve Mendel calling the signals, the Eagles have holdover running backs in Jeff Masline, Jon Tonetti and Darrell DeRosia. Andy Kasius, a basketball player who played JV football sophomore year but sat out last fall with an injury, has shown up well as a wide receiver. The line also is battle-tested; the main problem is to avoid wearing out the veterans by making them play both offense and defense too much.

Sodergren has elected one sophomore to the squad — Ed Perry, a 6-foot 165-pounder who is playing cornerback, i.e., outside linebacker, and working as Mendel's backup. Perry comes by his football prowess, by heredity — his father, Ed Perry, Sr., was a standout BC quarterback in the early Sixties, and later helped with coaching, including a stint as JV coach in 1978, the most recent year of glory in Bethlehem Central football. The elder Perry played college football at Buffalo State and later had a tryout with Dallas in the NFL.



Andy Kasius

## Paper drive Saturday

Boy Scout Troop 71 will hold a paper drive at the St. Thomas Church parking lot on Sept. 8 from 8 to 11:30 a.m. Old newspapers (not magazines) may be deposited in the collection bin. Volunteers will pick up papers if necessary.

For information call Charles Giglia at 439-6683 or John McCarthy at 439-6303.

## Playschool to open

The Hamagrael Playschool will conduct an organizational meeting for parents on Monday Sept. 10 at 7:30 p.m. at the Delmar Reformed Church, Delaware Ave., Delmar. The first day of class for four-year-olds will be Sept. 12. Classes for three-year-olds will begin Sept. 13. For information contact Colleen Foro at 439-0210 or Jane Gavin at 439-2418.



**THE SPOTLIGHT COLLEGE SUBSCRIPTION**

**COLLEGE SUBSCRIPTION \$7.00**


**Take The Spotlight With You And Keep Up With Your Hometown News And High School Team**

Mail to: THE SPOTLIGHT, 125 Adams Street, Delmar N.Y. 12054  
**COLLEGE SPECIAL:** Please send *The Spotlight* to my college address, below, from Sept. 12 to May 8. Enclosed is a check for \$7.00.

Name \_\_\_\_\_  
 Address \_\_\_\_\_  
 Zip \_\_\_\_\_

# ALBANY CITY HONDA

## WAITING FOR YOU



### HONDA ACCORD HATCHBACK IN STOCK

#4753 - WHITE	#4754 - WHITE
#4759 - LX, RED	#4671 - GRAY

**Features and Standard Equipment**

Power-Assisted Disc/Drum Brakes	Maintenance Reminder
Front and Rear Stabilizer Bars	Low-Fuel Warning Light
Variable-Assist Power Steering (except 5-sp. base H.B.)	Tinted Glass
Cruise Control (LX)	Rear Window Defroster
4-Speaker AM/FM Electronic Tuning Stereo w/Autoreverse Cassette (LX)	Rear Window Wiper/Washer
Reclining Front Bucket Seats	Steel-Belted Radial Tires
Split Folding Rear Seatback	Michelin Radial Tires (LX)
Tachometer	Quartz sweep Hand Clock
Electronic Warning System	Quartz Digital Clock w/Date Feature (LX)
Trip Odometer	Cargo Area Cover (LX)
Remote-Control Outside Rearview Mirror	Body Side Mouldings
Dual Remote-Control Outside Rearview Mirrors (LX)	Wheel Covers (LX)
	Wheel Trim Rings (H.B.)
	Two-Speed plus Intermittent Wipers
	Door Courtesy Lights (LX)

**PRELUDE**
**CIVIC**
**ACCORD**

**THE DEALER THAT DELIVERS**  
**945 CENTRAL AVE. 438-4551**  
**SEE THE FINEST USED CARS IN THE CAPITOL DISTRICT.**

# Blackbirds ready for the big guys

For a few brief but potentially bruising hours on Saturday, Voorheesville's football Blackbirds will be in what passes for the Big Time in these parts. That's the day Coach Tom Buckley and his coaches take their young but eager operatives to Latham for a four-way controlled scrimmage with Bishop Maginn, host Shaker and Johnstown, three Class A schools.

The format of the pre-season workout pits each team against each other team for eight plays from scrimmage on offense and eight on defense. No score is kept.

"It remains to be seen whether we can move the ball against the bigger schools, and how well we do in trying to stop them," mused Buckley this week. "But I can promise one thing — our kids are all hitters, and the other teams will know they've been hit."

Buckley got good news and bad in his summer football camp last week. The good news is that Tom Paeglow, the big tackle, received medical clearance to play this year. The bad news is that Alex Diener, the spindly 136-pound wisp with a strong throwing arm, is out for the season.

Paeglow will not become eligible until the second game, but Buckley isn't complaining. He welcomes the experience as well as the beef on a squad loaded with juniors. Diener has a history of a chronic knee, and when the balky joint swelled up after the first few

workouts, the family doctor stepped in.

Meanwhile Buckley was buoyed by the way the Blackbirds are rounding into shape. "They're in great condition," he enthused. "This has been one of the best preparations we've ever had. There is a lot of intensity. The entire offense is now in, and the defense should be set by the end of the week. I'm very pleased with the first two weeks."

Diener's departure leaves Vince Foley, last year's JV quarterback, as the man to run Buckley's patented option on the Blackbirds run-and-shoot offense. And who will be the backup quarterback? Why, Ed Mitzen, of course, everybody's all-everything. That means Voorheesville fans will see the versatile senior not only running the ball, kicking it and catching it, but now throwing it.

Blackbird coaches are also happy with the progress the crowd of juniors is making. Mark Chyryady has virtually nailed down a starting slot at defensive end and is getting a trial at tight end on the offense. Brian DeDe, a varsity wrestler, looks like a starting linebacker and has shown up well at fullback. Mike Deeley, one of Buckley's tough little guys, is a strong candidate for linebacker and offensive guard, and John Graziano is working at tight end and wide receiver.



That smile on Coach Tom Buckley's countenance is because he has another year with Ed Mitzen, who can do almost anything with a football except manufacture it. Tom Howes

## Adult basketball

The Bethlehem Parks and Recreation Department will sponsor an adult basketball program in the Bethlehem Central High School lower gym. Session I will meet from 8 to 10 p.m. Mondays, Sept. 10 through Nov. 26; and Session II will meet from 8 to 10 p.m. Wednesdays, Sept. 12 through Nov. 14. There is a limit of 35 players per session and players can sign up for either or both sessions. There is a fee of \$11 for session I and II.

The program is open to residents of the Town of Bethlehem and Bethlehem Central School District. Pre-registration is required and can be made at the Elm Ave. Park office, between 8:30 a.m. and 4:30 p.m. weekdays, in person or by calling 439-4131.

## Bank sponsors benefit run

On Sunday, Sept. 16 National Savings Bank will sponsor a 10 kilometer run to benefit the Bethlehem Lions Club Eyes for Sight program. The run will begin and end at the Delmar office of the National Savings Bank at the Four Corners. Runners will travel 6.2 miles through Delmar and Elsmere.

The Bethlehem Lions' Eyes for Sight program helps to provide check-ups, doctors and equipment necessary to preserve sight. Through the program used eye

glasses are recycled and used again.

A registration fee of \$5 will be collected at 9:30 a.m. on the day of the race. A pre-registration form may be obtained from any branch

of National Savings Bank or any Athletic Attic. Pre-registration fee is \$4 and free T-shirts will be given to the first 300 registrants. For information call Sally Murphy at 463-4261.

## Driver is charged

A Coeymans man was charged with criminal possession of stolen property, third degree, after he was stopped shortly after midnight Monday on Adams St. in Delmar, Bethlehem, police reported. Police checks revealed that the license plates on his car had been stolen from a vehicle left for repair at a garage in Troy, according to the police report. The plates, however, were actually registered to a third car, police said.

The driver was ticketed on charges of operating an unregistered vehicle, being an unlicensed operator, driving an uninspected and uninsured vehicle, and having switched plates. He is due in town court Sept. 18.

UMBRO	BRINE	PATRICK	SPOTBILT
FOOTBALL	SOCCER		
Cleats	Shorts		
Arm Pads Hand Pads	Cleats Shin Pads		
BCHS GYM BAGS			
TUBE SOCK SPECIAL 6 PR/8.99			
<b>MIKE DEROSI SPORTS</b>			
1823 Western Ave., Westmere 456-7630			

## GLORIA STEVENS ANNOUNCES FITNESS 5!

If you've been loyal to an exercise program but not getting the results you want, Gloria Stevens' FITNESS 5 evaluation may be the answer you've been looking for

- 1 Aerobic Capacity
- 2 Flexibility Measure
- 3 Bodyfat Measure
- 4 Strength
- 5 Endurance

**LIMITED OFFER!**  
**FITNESS 5**  
 evaluation  
 Value \$75 FREE\*

\*With purchase of 6 week introductory program for \$25.

- Individual exercise programs.
  - Aerobics.
  - Circuit weight training.
  - School trained certified technicians.
  - Lifecycle aerobic programs.
  - Babysitting services.
  - Hours and facilities may vary. Monday - Friday 9 am to 9 pm. Saturday 9 am to 3 pm.
  - Additional programs will be offered.
- Franchises available: call (617) 848-7380

**ELSMERE** 155 Delaware Ave. 439-8104  
**LOUNDOENVILLE** 265 Osbourne Rd. & Shaker Rd. 459-6361  
**SCHENECTADY** 1515 Union St. 372-4718

*Gloria Stevens*



**BURT ANTHONY ASSOCIATES**  
 FOR INSURANCE.

**BURT ANTHONY**

Do you have Adequate Liability Coverage for house and car? (This is the Coverage to Protect You in a Law-Suit) Some Coverages can be Doubled for \$2.00 or \$3.00.

Call **439-9958**

214208 Delaware Ave. #11 Delmar

**Professional Auto Parts**

- Tools
- Car care products
- Kendall Oils
- Auto accessories

**Bicycles**  
 Sales • Service • Parts • Accessories

4 Corners **439-4931** Delmar

**WORLD OF WHEELS**  
 Rt. 9W Glenmont, (across from Albany Motor)  
 Open Monday thru Saturday 7 a.m. - 6 p.m.

**436-4182**

**GRAND OPENING SPECIALS TIRES!! TIRES!!** Most Major Brands!!

ALL SEASON RADIALS	ULTRA BELTED
P 155/80 R-13 \$38.10	A-13 P165/80 D-13 \$27.83
P 185/80 R-13 \$41.77	B-13 P 175/80 D-13 \$29.96
P 195/75 R-14 \$46.24	C-14 P185/75 D-14 \$30.28
P 205/75 R-14 \$48.14	E-14 P195/75 B-14 \$30.42
P 205/75 R-15 \$50.37	F-14 P205/75 B-14 \$31.72
P 215/75 R-15 \$53.69	G-14 P214/85 B-14 \$32.91
P 225/75 R-15 \$55.32	H-15 P215/75 B-15 \$34.14
P 235/75 R-15 \$59.25	I-15 P225/75 B-15 \$35.54
	L-15 P235/75 B-15 \$38.06

**FREE MOUNTING**  
 Computer Spin  
 Balancing Available

**SNOW TIRES**

L x 15	\$48.50
H x 15	\$46.62
G x 15	\$43.49

**COMPARE AND SAVE!! OTHER SPECIALS**

<b>FREE FILTER*</b> With Lube & Oil Change 5 qts., oil 10-40 <b>\$10.95</b> *Most Popular Size Cars	<b>DISC BRAKES*</b> New Pads, Brake Adj., Pack Front Wheel Bearings *Most Popular Size Cars <b>\$29.95</b>
<b>FRONT END ALIGNMENT</b> <b>\$18.95</b> With Any Tire Purchase <b>\$14.95</b>	<b>STOP IN AND ENTER OUR DRAWING FOR A FREE CABBAGE PATCH DOLL</b> Drawing Sept. 15, 1984 No Purchase Necessary

**FREE PICKUP & DELIVERY**  
 IN BETHLEHEM AREA

# BC booters searching for striker

Bethlehem Central soccer coaches face a strong challenge this year in restoring the once-feared Eagles to a contending position in the Suburban Council. They have a large contingent seniors but fewer juniors than usual, and they face a murderous schedule in the strongest league in this part of the state.

"We have no superstars, but we have good balance, and we're hoping some of our seniors and juniors will blossom into top-flight players," says Gene Lewis, the BC art teacher who has been head soccer coach for the past several years.

That's another way of saying that the Eagles are desperately searching for a consistent scorer. In contrast to previous years, when Bethlehem was a perennial contender for the crown year after year, the 1983 Eagles played beautiful soccer between the 20-yard stripes, but had trouble getting the ball into the nets and likewise keeping the other guys from doing the same.

One of Lewis' major moves this year is an experiment that moves Brett Zick, a rugged fullback, up to center forward. Zick, who is big but fairly quick, is emerging as a team leader. Other experienced hands include Bob Keens, a three-year varsity player, who may wind up as a playmaker at halfback after two years on the front line, and Damon Woo, a speedy senior who looks like a fixture at wing.

In his quest for a good striker, Lewis has been working Paul Stracke, a junior, at center. Stracke, who came along well last year, played some fullback a year



Coach Gene Lewis shows a knee-dribble while posing with two returning starters from last year's Bethlehem Central varsity soccer team during a pre-season workout last week. Lewis counts on Bob Keens, left, and Brett Zick to give the Eagles the

scoring punch they have lacked the last several seasons. Keens, a forward last year, may move to center half as a playmaker, and Zick, a fullback by trade, is working on the front line.

Tom Howes

ago, but also saw spot duty at center forward.

"We need help at halfback and fullback," Lewis said after the first few workouts last week. "We're not as strong as we would like." Such cautious statements from a coach who is normally optimistic may indicate some stormy times

ahead at a time when Bethlehem, missing the Sectionals last year for the first time in more than a decade, most needs a lift back to its position among the suburban elite.

Lewis got a jolt when Dave Guarino, his starting keeper last year, transferred to the New York

metropolitan area. That leaves the net-minding spot open to either Roy Long, a senior who was a backup last year, or Aaron Haldorf, a junior who was the JV keeper a year ago.

Lewis will retain at least one sophomore on the varsity, Toby Dunmore, who moves up to join his brother Mat (who spells his name one "t"). The elder Dunmore was a varsity halfback last season.

The Eagles have 58 players signed up, many of them products of the Bethlehem Youth Soccer Club's developmental program, and it is unlikely that anyone will be cut. The younger players will spend the autumn with Zack Asael, JV coach, and Kelly Keller, the new freshman coach. Keller played soccer at Doane-Stuart and Springfield College, and has come home to her family in

Glenmont. She will be teaching at the Glenmont Elementary School.

All three levels are certain to profit from a clinic this Saturday with Nick Zlatar, a coach of the U.S. National team who runs the U.S. Olympic soccer camp. That bonus will come just three days before the Bethlehem opener, a non-league matchup with Troy High at home.

## Banking network

Community Banking Network of Albany and Datek/Instacard Corp. of Buffalo are forming the first statewide shared electronic banking systems network in the state. The arrangement means that all point-of-sale and automated teller machine terminals in the two systems will be shared, expanding Community Banking Network's market into the Buffalo, Rochester and Jamestown areas, as well as New York City. Instabank will gain access to the Syracuse, Albany and mid-Hudson regions.

The new network is expected to begin operation early in 1985, and will enable customers of 29 participating financial institutions to access more than 400 Instabank and Community Banking Network terminals across the state. Community Banking Network is a division of Key Services Corp., which is a subsidiary of Key Banks, Inc.

## New catalogue

The Renovator's Supply, Inc., a mail order corporation based in Millers Falls, Mass., recently acquired The Country Notebook, a large catalogue subsidiary which specializes in country style decorating products.

The corporation includes The Renovator's Supply catalogue that offers Colonial, Victorian and classic products and Aristera, a catalogue offering products for left-handed people. The corporation publishes Victorian Homes Magazine.

## Join project hope

Two new people have joined the staff of the Bethlehem Coeymans unit of Hope House. Daniel Lucy will replace Joan Levine Unit Director. Thalia Perdaris will replace George Mercier to serve as assistant unit director. Perdaris is also a social worker.

### ADVERTISEMENT

#### H&R BLOCK

#### TO OFFER TAX SCHOOL IN DELMAR

Thousands of people are earning money in their spare time as income tax preparers.

H&R Block, the world's largest income tax preparation service, is offering a basic income tax course starting September 12th and 13th with morning and evening classes available.

During the 12 week course, students will study all phases of income tax preparation and receive actual experience in preparing individual returns. Experienced Block personnel will teach current laws, theory and application as practiced in Block offices nationwide. There is a classroom lecture on each subject and practice problems at every level. Courses are programmed to teach students increasingly complex tax problems as study progresses. Students will find the course both interesting and challenging.

Anyone may enroll. There are no restrictions or qualifications. Courses are ideally suited for housewives, retired persons, teachers or persons wanting to increase their tax knowledge.

Qualified course graduates may be offered job interviews positions with Block. Many accept employment with Block because of the flexible hours available. However, Block is under no obligation to offer employment, nor are graduates under any obligation to accept employment with H&R Block.

The modest course fee includes all textbooks, supplies and tax forms necessary for completion of the school. Certificates and 7.5 continuing education units will be awarded upon successful completion of the course.

Registration forms and a brochure for the income tax course may be obtained by contacting the H&R Block office at 1843 Central Avenue, telephone 456-1566.

## IT'S DICKER MONTH AT NAUTILUS-DELMAR

30 Day Fitness Bonanza (Aug. 22nd-Sept. 22nd). Let's Face It! August and September are not only our (and the industry's) Slowest month; it's our Anniversary! So we've decided to let You Dicker For Your Membership, like you do for your car, home, etc.

We'll start with our regular rates; you counter with some ridiculous "offer"; then we'll dicker (negotiate) back and forth until You Make Us An Offer We Can't Refuse. The savings for you could be substantial; the new business, for us, could "round out" our schedule nicely. We Both benefit! You can trim down, firm up, stretch out, strengthen and improve your cardio-vascular condition. And We can keep busy attending to your needs and desires during an otherwise slow month.

This is the chance you've been looking for to get both mind and body in shape — finally! So, Stop Dawdling — and Start Dickering!

Call 439-2778 for your Dicker Date



## Net more than twice what you get with banks or money market funds.

### "We Specialize in IRA"

Smart investing means getting the highest possible income, after taxes. You can do it with tax-free municipal bonds.

You get an interest rate that beats most banks and money market funds. And, instead of paying up to 50% of your earnings in taxes, you keep every penny you earn.

That means that a tax-free municipal bond paying 10% can net you the equivalent of:

**20%** before taxes on taxable income

And that's more than twice what you get with most banks and money market funds. Let Baird, Patrick show you how easy it is to invest tax free.

For a FREE Brochure

Call (518) 439-8044 or Mail Coupon to:

**Baird, Patrick & Co., Inc.**  
Members: New York Stock Exchange American Stock Exchange Associate  
264 Delaware Avenue SIPC MEMBER  
Delmar, N.Y. 12054 **THE IDEA BROKER**

Yes, I'd like your FREE booklet on Tax Free Municipal Bonds

NAME: \_\_\_\_\_  
ADDRESS: \_\_\_\_\_  
CITY: \_\_\_\_\_ STATE \_\_\_\_\_ ZIP \_\_\_\_\_  
PHONE: \_\_\_\_\_

### PLUMBING—HEATING—ELECTRIC

## J.W. BARTLEY & SONS

WATER PUMPS  
SALES & SERVICES  
SOLAR SYSTEMS  
DESIGNED & INSTALLED  
768-2230

We'll make your motor sing



- Engine Tune-up
- Front End Alignment
- Automatic Transmission Service
- Modern Equipment
- Skilled Mechanics

## BAILEY'S GARAGE

Oakwood Road, Elsmere  
Phone 439-1446

## Help In getting around

A new book, *A Guide for the Disabled Traveler*, will be highlighted at a reception for author Frances Barish to be held Sept. 10 at the Legislative Office Building. Mrs. Barish has a message for anyone who has a problem with mobility including those who are blind and deaf. She tells handicapped readers to continue traveling, but to travel differently.

Barish has traveled North America, Europe, the Caribbean and the Hawaiian Islands in her wheelchair. Her book contains specific information about accessibility in hotels, restaurants, theaters, and transportation terminals in Canada, Europe and the United States. For information call Dorothy Rosenthal at 434-4103.

## REAL ESTATE

### REALTY FOR RENT

**OFFICE SPACE** - 308 sq. ft. next to Fowlers Liquor Store on Delaware Ave. 439-2613. TF

**GARAGE** - near middle school, one car, storage or parking, 439-6295.

**DELMAR GARDEN APARTMENT** beautiful 1 bedroom, balcony, appliances, no pets, no utilities immediate 439-6295.

### REAL ESTATE WANTED

**PROF. MAN NEEDS ROOM** & supper weekdays only, near Albany. Non-smoker. Allen 474-7735; 765-3150. 4T95  
**NON-SMOKER, PROFESSIONAL MAN** needs 1 br. in Delmar area. 439-6766.

**BUILDING LOTS** needed for mobile homes, double wides, and modulars. Pantazis Real Estate, 767-9685, 767-9562. 2T912

**PANTAGES HOMES, INC.**  
 Forget Rent Receipts — Build Equity  
 Enjoy Luxury & Affordability  
 New Manufactured Homes Always On Display  
 U.S. Rt. 9W  
 Selkirk — 767-9685

**Scharff's Oil**  
 & Trucking Co., Inc.  
 FOR HEATING FUELS  
 Glenmont  
 465-3861  
 So. Bethlehem  
 767-9056

**REAL ESTATE DIRECTORY**  
 Local ERA  
 John J. Healy Realtors  
 125 Adams Street  
 439-7615  
 NANCY KUIVILA  
 Real Estate, Inc.  
 276 Delaware Ave.  
 439-7654  
 PICOTTE REALTY INC.  
 205 Delaware Ave.  
 439-4943  
 BETTY LENT REALTY  
 241 Delaware Ave.  
 439-2494

## LEGAL NOTICE

WHEREAS, Mid-Hudson Cablevision, Inc. has requested certain changes in its cable television franchise granted by the Town of Bethlehem on January 29, 1981, and,

WHEREAS, a notice of public hearing to discuss these changes was given in the official newspaper of the Town, The Spotlight, on September 14, 1983.

WHEREAS, these changes have been discussed at a public hearing at 7:30 p.m. on September 28, 1983, held at the Town Offices at which the public had an opportunity to make comments and suggestions,

NOW, THEREFORE, BE IT RESOLVED and ordained that the following changes shall be made to the CATV franchise granted Mid-Hudson Cablevision, Inc., January 29, 1981, subject to the approvals by the Towns of New Baltimore and Coeymans and the New York State Cable Commission:

### I. SCHEDULE A, RATE SCHEDULE to read as follows:

BASIC CABLE SERVICE RESIDENTIAL DWELLING UNITS	INSTALLATION CHARGE	MONTHLY SERVICE CHARGE
First connection - TV or FM	\$24.95	\$9.95
Second Connection - TV or FM	\$10.00*	\$2.00
Each Additional Connection - TV or FM	\$10.00*	\$1.50
Move to Another Dwelling Unit	\$15.00	
Relocate Within the Same Dwelling Unit	\$15.00	
Reconnect	\$15.00	

\*Installation charge waived if additional connections are made at the same time as the first connections.

**COMMERCIAL UNITS**  
 i.e., Bars, Restaurants, Clubs and other places of public gathering.

Each Connection - TV or FM	Time and Material \$19.90
----------------------------	---------------------------

**HOTELS AND MOTELS**  
 First Connection - TV or FM Time and Material \$19.90  
 Each Additional Connection - TV or FM Time and Material \$2.95

**HOSPITALS AND OTHER INSTITUTIONS**  
 First Connection - TV or FM Time and Material \$19.90  
 Additional Connections - TV or FM Time and Material \$2.95

**SATELLITE SERVICE (Includes Converter)**  
 \$25.00 deposit required on all converters \$6.00

**SCHOOLS**  
 First Connection Standard Installation is Free FREE  
 Additional Connections Time and Material FREE

**PREMIUM PROGRAMMING SERVICE**  
 Special programming channels of entertainment services delivered via satellite. Services such as:

**HOME BOX OFFICE**  
 Features movies and night club entertainment without commercials. (HBO programming is not available to commercial customers.)

**SPORTS CHANNEL**  
 Offers a variety of sporting events including many live Major League games.

**RESIDENTIAL SERVICE**  
 Premium service may be prepaid on an annual basis. Customers prepaying for a year will receive free installation charge. \$25.00 \$10.00

## LEGAL NOTICE

II. LINE EXTENSION AMENDMENT to read as follows:

Any area in the town not specified as part of the primary service area is hereby designated a line extension area. The primary service area will be constructed within five years of the granting of this franchise and prior to the construction of any line extension in the areas.

Services shall be provided to any line extension area upon request provided that the area has 35 homes-per-mile (HPM) or has the equivalent HPM to the primary service area, whichever is less. The HPM statistic for the primary service area will be determined by dividing the total dwelling units passed in the primary service area by the total linear miles of the cable plant in the primary service area.

Any resident of a line extension area falling below the minimum HPM figure outlined above, shall be able

## LEGAL NOTICE

to receive service upon payment in full and in advance of a sum to be computed as follows:

C — CA  
 LE P = CA

C equals the cost of construction of a new plant; CA equals the average cost of construction per mile in the primary service area. P equals either 35 HPM or the average number of dwelling units per mile of aerial cable in the primary area, whichever is less. LE equals the number of dwelling units requesting service in the line extension area; SC equals subscriber contribution in aid of construction (CAC) for the line extension.

Mid-Hudson Cablevision shall apply for all mandatory licenses, permits, amendments and approvals within 60 days of the receipt of all CAC payments for a line extension area. Mid-Hudson Cablevision shall provide service to a line extension area within 90 days of the receipt of all mandatory licenses, permits, amendments and approvals.

During a five year period commencing at the completion of a CAC line extension, a pro-rata refund may be paid to previous subscribers as new subscribers are added to the particular line extension; the amount of the refund, if any, shall be determined annually by application of the above stated formula. The refunds shall be paid annually to subscribers; or former subscribers, entitled to receive them. However, Mid-Hudson Cablevision shall not be required to provide refunds to any previous subscriber otherwise entitled to a refund, who is no longer at either the service address or billing address, and who has not informed the company of the subscriber's address.

### III. PUBLIC ACCESS AMENDMENT to read as follows:

Mid-Hudson Cablevision will provide public access in accordance with the rules of the New York State Commission on Cable Television.

In that the State of New York, the

## LEGAL NOTICE

municipality, educational institutions and members of the general public may have availability to an access channel or channels for not less than five hours a day, two hours of which will be between the hours of 5:00 p.m. and 9:00 p.m. The hours between 7:00 p.m. and 8:00 p.m. will be reserved for the State Government.

The access channel will be channel 10. An additional access channel will be made available within six months of a formal request by the municipality.

Mid-Hudson Cablevision shall not charge for the use of the access channel for public access purposes and public service announcements. However, Mid-Hudson Cablevision will be reimbursed for additional time necessary to provide other than regular access facilities. The access entity shall be Mid-Hudson Cablevision who shall be responsible for the operation and administration of such channels and facilities.

Mid-Hudson Cablevision will provide public access channels in accordance with the rules that result from the inquiry established by the New York State Commission on Cable Television.

Mid-Hudson Cablevision shall notify subscribers yearly of the availability of the access channel and equipment including the address and telephone number of the administrative entity.

The foregoing resolution was presented for adoption by Mr. Hendrick, was seconded by Mrs. Bickel and was duly adopted by the following vote:

Ayes: Mr. Corrigan, Mrs. Bickel, Mr. Geurtze, Mr. Hendrick.

Noes: None

Absent: Mr. Prothero

BY ORDER OF THE TOWN BOARD  
 TOWN OF BETHLEHEM  
 Marion T. Camp  
 Town Clerk

Dated: August 22, 1984

(Sept. 5)

**Now Featuring Chlorine in 5 Gal. Returnable Carboys**  
**POCONO POOL PRODUCTS**  
 28 South Main Street  
 Voorheesville  
 Mon.-Fri. 9-5  
 Sat. 9-4  
 Eves. by appt.  
 765-2221

**IMMACULATE HOME**  
 Well kept, three bedroom one bath bungalow with newly remodeled kitchen. Dining area and finished family room. Deep lot and fenced rear yard.  
**\$49,500**  
**KLERSY REALTY, INC.**  
 282 DELAWARE AVENUE  
 DELMAR, N.Y. 12054  
 439-7601

**"SINCE 1945"**  
**LONG OIL HEAT, INC.**  
**DOES YOUR OIL SERVICE CONTRACT COVER . . . ?**


1. Complete Boiler/Furnace Replacement. **\*NO CHARGE**
2. 24 Hour Emergency Service **NO CHARGE**
3. Leaking Oil Tank (Labor & Tank) **NO CHARGE**

**OURS DOES!! ALWAYS DID!!**  
**69<sup>50</sup>** Plus Tax


**150 MYRTLE AVE., ALBANY, N.Y.**  
 Call for more information  
 465-6647 (HO-LONGS)

**For the Right Roof Over Your Head!!**

- ★ Cedar sided Colonial
- ★ Private yard, screened porch & patio
- ★ Two family rooms with fireplaces
- ★ Country Kitchen — all appliances
- ★ Three bedrooms — 2½ baths
- ★ Community pool & golf course
- ★ \$127,900



**Eaton & Breuel**  
 135 Adams St.  
 Delmar, N.Y. 12054  
 439-8129



- Private home with separate 2 unit apartment house
- Convenient location
- Offered at \$87,200

Call Harry Adams  
**PAGANO WEBER**  
 264 Delaware Ave. 439-9921

**BATHROOMS**

**BATHROOM NEED WORK?**  
Dirty joints? Loose tile? Leaks when showering? Call Fred. 462-1256. TF

**BUSINESS OPPORTUNITY**

**OWN YOUR OWN JEAN-**  
Sportswear, Ladies Apparel, combination accessories, Large Size store: National brands: Jordache, Chic, Lee, Levi, Vanderbuilt, Izod, Esprit, Britannia, Calvin Klein, Sergio Valente, Evan Picone, Claiborne, Members Only, Organically Grown, Healthtex, 700 others. \$7,900 to \$24,900, inventory, airfare, training, fixtures, grand opening, etc. Can open in 15 days. Mr. Loughlin (612) 888-6555.

**FOUND**

**PERSCRIPTION GLASSES**  
in case found 8/27 at Village & Delaware. Inquire at Spotlight.

*In Feura Bush The Spotlight is sold at Houghtaling's Market*

**HELP WANTED**

**PROFESSIONAL COUPLE**  
needs loving person to care for 16-month-old son at home near New Salem. Excellent pay, hours negotiable. 463-2944. TF

**BABYSITTER/LIGHT HOUSE-**  
KEEPING, One school age child. References. 439-9794 after 6:00 p.m. 2T95

**TEENAGER WANTED**  
to do household laundry for 3 on weekly basis. Must have car. 463-2944. TF

**AFTER SCHOOL AIDES** —  
High school jrs. & srs. Must be 16 years old. 2-5 days 2:30-5:30. Lunch preparation aide. 11-1:30 daily. Bethlehem Preschool, Glenmont. 463-8091.

**LOVING, PATIENT ADULT**  
to care for 9-yr-old boy after school and school days off. Extra hours available. Extra for housekeeping. My home, Glenmont area. 439-7187 evenings/weekends.

**CLASSIFIEDS**  
Minimum \$3.00 for 10 words, 25 cents each additional word, payable in advance before 1 p.m. Monday for publication Wednesday. Submit in person or by mail with check or money order to 125 Adams St., Delmar, NY 12054.  
**439-4949**

**HELP WANTED**

**WAITRESS** part-time eves. no Sundays, must be experienced. Brockley's. 439-9810, 439-6090.

**MOVER NEEDED PT/FT**  
Call for appointment, 439-5210.

**HOUSEKEEPER WANTED**,  
for local cleaning firm days part time, must be reliable and have car, 489-7572. 2T912

**SUBSTITUTES NEEDED**,  
Bethlehem Central School cafeterias, hours and locations will vary — minimum wage. Contact Julie Williams, 90 Adams Place, Delmar. 3T95

**HELP WANTED**

**TRAIN WITH US!** Be a certified Homemaker Home Health Aide. Free 13 day training, Sept. 18th thru Oct. 4th, 9:00 a.m. to 3:00 p.m. Good pay and complete benefit program. Work available in all areas; full or part time. For more information call Gail at 459-6853, after 9 a.m. Home Aide Service of Eastern N.Y. 10 Colvin Ave., Albany, EOE M/F. 3T9/12

**LUNCH WAITRESS**, Pt, FT,  
with occasional eves. Apply in person, The Shanty, 155 Delaware Ave., Delmar, between 2-4 p.m.

**HELP WANTED**

**EPILEPSY ASSOCIATION**,  
needs your talent. Half-time director \$12,000. Half-time educator-counselor \$8,000. Send resume and letter to Epilepsy Association, Box 117, Delmar, N.Y. 12054. TF

**AMBITIOUS HARDWORK-**  
ING individual needed to work full time. Apply in person at Saratoga Shoe Depot, 255 Delaware Ave., Delmar, 439-2262.

**MORNING BABYSITTER**,  
for boy in hamagrael afternoon kindergarten. Prefer playmate, call 439-1990.

**JEWELRY**

**EXPERT WATCH, CLOCK AND JEWELRY REPAIRS.**  
Jewelry design, Appraisals, Engraving. **LE-WANDA JEWELERS, INC.** Delaware Plaza, 439-9665. 25 years of service. TF

**MISC FOR SALE**

**NEW POTATOES**, dug to order, 1/2 bushel-1bushel, Dick Everleth, 439-1450. 4T919

**FOR SALE: CRIB SET**,  
rocker, bunk bed. Call 439-8541.

**UPRIGHT PIANO, BENCH**  
excellent play, antiques, \$250. After 6, 439-5606.

**ST. THOMAS UNIFORMS.**  
Jumpers size 7 & 8, new. Blouses, ties, boys shirts 12 & 14, Slim. Pants & Ties. 439-3823 after 3:00 p.m.

**WHIRPOOL WASHER, GE**  
dryer, lavatory, stall shower, all in excellent condition, 439-2452. 2T912

**DRUM SET, RODGERS 4**  
piece (no snare) \$400. Moped 1981 Yamaha Champ, very good, 30 mph., 2 speed auto, shaft drive. 1978 Mazda 2 door hatch, 5 speed, 85,000 miles. 25 MPG, good condition, \$1700. Book value, sell \$950. or best offer, 439-9755.

**ACCOUNTING**

**PRATT VAIL ASSOCIATES**  
Tax & Business Consultants  
208 Delaware Ave Delmar, N.Y. 12054  
**439-0761**  
• Computerized Accounting, Bookkeeping, Income Tax, & Estate Planning Functions.  
• Individual, Partnership & Corporation Income Tax Return Preparation  
• Small & Medium Size Business Accounting  
• Payroll/Sales Tax Return & Functions  
• Journals, Ledgers, Work Papers Maintained  
Other offices:  
Clifton Park 371-3311  
Colonie 869-8428

**BUSINESS DIRECTORY**  
Support your local advertisers


**HOME IMPROVEMENT**  
**HANDY BOB**  
Can do all your roofing repairs, painting, and odd jobs.  
Reasonable Rates - Free Estimates  
**356-4053**

**ANTIQUES**

Period Furniture Country Pine  
Shaker Furniture Lighting  
**ANTIQUES at the TOLLGATE**  
1569 New Scotland Rd. Slingerlands 439-6671  
Hours:  
Mon.-Sat. 11:00-5:30 p.m.  
Sun. 1:00-5:00 p.m.  
We Buy and Sell Quality Antiques  
Cut & Pressed Glass Quilts  
Books on Antiques Old Prints  
Sue Zick Interiors 439-3296

**APPLIANCE SERVICE**  
**DIAMOND JIM Appliance Repair**  
Fully Insured  
All Major Appliances  
Jim Brady 756-9281

**BLACKTOPPING**  
**Driveway Sealing**  
Pre-application Maintenance available  
**Cleaning Crack Repair**  
Free Estimates Jim Haslam  
**439-9702**

**DANCE**  
**CLASSIQUE DANCE SCHOOL**  
Bagha M. Follett, Dir.  
  
439-3331  
All types of Dance and Exercise  
**CHILDREN AND ADULTS**  
**154-A DELAWARE AVE. DELMAR, NY 12054**  
BROCHURE MAILED ON REQUEST

**GLASS**  
**BROKEN WINDOW**  
**TORN SCREEN?**  
Let Us Fix-Em!  
**Roger Smith**  
Since 1970  
340 Delaware Ave., Delmar  
**439-9385**

**CALL THE WALL DOCTOR®**  
• Ceiling and Wall Restoration  
• Custom Spackling  
• Taping  
• Sheetrock Applied  
• Prof. Painting  
• Fast and Clean  
**Ask for Bob 438-7360**

**WAYS, INC. APPLIANCES**  
Sales - Service  
Most Major Brands  
Whirlpool Tech-Care Franchised Service  
**756-9232**

**D & G Paving Blacktop Contractors**  
New, Repairs, Sealing, Stone  
**FREE ESTIMATES**  
Guaranteed - Fully Insured  
**Selkirk 767-9832 767-2449**

**HOME IMPROVEMENT**  
**Dick's Home Repair Service**  
  
We do all types of repairs for your home or business  
Carpentry • Painting  
Plumbing • Electrical  
**767-2000**  
No job too small Please call after 6:00 p.m.

**INTERIOR DECORATING**  
  
Beautiful WINDOWS  
By Barbara  
Draperies  
Drapery Alterations  
Bedspreads  
Your fabric or mine  
**872-0897**

Same Day Service!!  
**Refrigeration Air Conditioning**  
Major Appliances  
**TRI VILLAGE APPLIANCE SERVICE**  
"When We Do It We Do It Right!"  
381-4147 439-9582  
exchange

**BLACKTOP**  
paving by  
**C. Macri & Sons**  
Driveways Parking Lots Patios  
Complete Tennis Courts  
Also Seal Coating  
Free Estimates  
Call Delmar  
**439-7801**

**ELECTRICAL**  
**GINSBURG ELECTRIC**  
All Residential Work  
Large or Small  
**FREE ESTIMATES**  
Fully Insured • Guaranteed  
"My Prices Won't Shock You"  
**459-4702**

Call **STEVE HOTALING**  
**THE HANDY-MAN**  
Home Repairs Remodeling  
Interior-Exterior Painting  
Aluminum Doors and Windows  
**439-9026**

**LANDSCAPING**  
**Henrikson Landscaping**  
• All types of landscape contracting  
• Professional grounds maintenance  
• Commercial/Residential  
"FOR A FREE ESTIMATE CALL"  
**768-2842 Chris Henrikson**

**The Unicorn**  
439-0002  
2100 New Scotland Rd. Route 85, New Scotland  
**Antiques Buy • Sell FURNITURE OF YESTERYEAR**  
Tues. Thru Fri. 12-4  
Sat. 10-4:30, Sun. 12-4:30  


**DELMAR AUTO BODY**  
Expert Collision & Rust Repair  
**FREE ESTIMATES**  
325 Delaware Ave. Delmar  
(Rear of Gochee's)  
**439-4858**

**CARPET CARE**  
CARPETS "CLEANED"  
20% OFF 9/1-9/30 With Coupon  
**SUNLIGHT CLEANING SERVICE**  
Carpets, Upholstry Windows  
Gary Oliver - since 1978  
449-1413 - 465-8732


**EXCAVATION BULL DOZING TRUCKING**  
N. E. 768-2945  
**DONALDSON**  
919 DELAWARE TURNPIKE CLARKSVILLE, N.Y. 12041

**FLOOR SANDING**  
**FLOOR SANDING & REFINISHING**  
Professional Service for Over 3 Generations  
Commercial • Residential  
• RESTORATION • STAIRS  
• WOOD FLOORS • NEW & OLD  
**M&P FLOOR SANDING 439-4059**  
189A Unionville Rd Feura Bush

**FRED'S MASONRY**  
All types masonry.  
**FREE ESTIMATES**  
No Job Too Small  
**(518) 477-5045**

**Valinda's Delmar Florist And Landscaping**  
**TOPSOIL & GRAVEL**  
Complete Lawn Maintenance  
Lawn Mowing & Cleanup  
**PLANTS & SHRUBS**  
Free Estimates  
**439-7726**

**SUPPORT YOUR LOCAL ADVERTISERS**

**BATHROOMS**  
**Let's Save Your TUB**  
  
**EMPIRE CERAMIC TUB REFINISHING, LTD.**  
Box 1193  
Coeymans, N.Y. 12045  
**(518) 475-2868**

**CHIMNEYS**  
DELMAR, N.Y.  
439-6416  
  
**De Olbe Chimney Sweeps LTD.**

**FURN. REPAIR/REFIN.**  
**Joseph's & Dimitrios' FURNITURE**  
Cabinetry & Refinishing  
Corner of Broadway & Bridge St., Albany  
**463-6501**  
\*\*\*\*\*  
Heritage Woodwork  
Specializing in Antiques and fine woodworking  
**FURNITURE**  
Restored • Repaired • Refinished  
Custom Furniture • Designed; Built  
**BOB PULFER — 439-5742 439-6165**  
\*\*\*\*\*

**ROOFING SIDING**  
Residential — Commercial  
Ice Sealed Eaves  
Gable - Built-Up - Bonded  
Aluminum Siding - Remodeling  
Free Estimates - Fully Insured  
**JAMES HOME IMPROVEMENT CO.**  
— Since 1943 —  
**439-3000**  
421 Wellington Rd., Delmar, NY

**HORTICULTURE UNLIMITED LANDSCAPING**  
  
Design Maintenance Construction  
"A Complete Professional Service"  
**BRIAN HERRINGTON 767-2004**





## Vox Pop

is open to all readers for letters in good taste on matters of public interest. Letters longer than 300 words are subject to editing and all letters should be typed and double-spaced if possible. Letters must include phone numbers; names will be withheld on request. Deadline is 5 p.m. the Friday before publication.

### What about renters?

Editor, The Spotlight:

I am writing to express my concern over the proposed rezoning of "A" residential areas in the town of Bethlehem.

Having been a resident of Delmar for the past twenty four years, I have grown to enjoy the pleasant "small town" atmosphere that the town of Bethlehem provides. As a single, working woman I have felt a certain

security in renting an apartment in Delmar. Apartments are not easy to find, nor are they easy to afford, but the sacrifices made are small when compared to the advantages of living in a pleasant town and neighborhood.

Could rezoning cause the existing apartments in Bethlehem to become economically out of reach for a single person or someone living on a fixed income? If the town board approves this change

the available apartments would be at a premium, thereby creating a supply versus demand situation.

I urge all tenants of Bethlehem to attend the meeting on Sept. 12 and voice their opinion.

Nora Hooper

Delmar

### Thanks for reminder

Editor, The Spotlight:

We are grateful to Mr. Woehle for reminding us in the *Spotlight* of Aug. 22 that Geraldine Ferraro voted against HR Bill 5119 to help pro-American El Salvador.

Anyone with courage enough to vote against further interference in the affairs of another nation — and obviously for the purpose of advancing American business interests regardless of the destruction of lives and property — at a time when fewer and fewer of our representatives show principle and decency enough to protest such indecent action warrants a reminder of her action.

We certainly will not forget and mean to act on the reminder as suggested on Election Day in November.

Fred and Helen Adler

Delmar

### Fundamental concerns

Editor, The Spotlight:

Thomas Paine said, "God is the creation that you see about you." Secular humanists say, "The universe is self-existing — there is no God!" Humanists believe that man is supreme because no

greater animal exists on earth. Because they cannot conceive of something evolving from nothing, they deny the existence of the power that created it.

These are the people who are bringing us socialism, who would nationalize our schools and raise our children as directed by Washington. These are the people who feel it is an essential part of education to withhold all mention of our Creator from our future citizens.

They call it the "American way!"

James H. Westervelt

Slingerlands

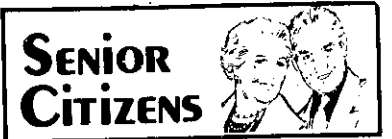
### Cockrell in concert

This autumn on the second Thursday of each month Delmar pianist Findlay Cockrell resumes his tradition of concerts starting at 12:05 p.m. and lasting about 50 minutes, in the Recital Hall of the State University at Albany Performing Arts Center. Admission is free and the public is invited. Although the concerts are set for the lunch hour, food and beverages are not allowed in the concert hall.

Cockrell will play a variety of music this season accompanied by his own style of commentary. The dates of the concerts are Sept. 13, Oct. 11, Nov. 15 and Dec. 13.

### Auxiliary resuming

A covered dish dinner is planned for the Sept. 18 meeting of the Nathaniel Adams Blanchard American Legion Auxiliary at 7 p.m. Laurie Wasserstrom and Paul Montanus will be speakers.



Bethlehem's senior citizens organization is conducting its annual membership drive. Annual dues are \$3 and members are charged a dessert-coffee fee of 35 cents each week when they attend a meeting. Meetings are held from 12:30 to 4 p.m. Thursdays at the Bethlehem Town Hall.

Those who wish to be included in the group's published membership roster should do so by Thursday, Sept. 20.

Bethlehem senior citizens organization sponsors a bowling group, which meets at 9:30 a.m. the first Wednesday of each month at Del Lanes in Delmar.

Seniors interested in joining should meet at Del Lanes. Additional information on activities sponsored by the organization is available at the group's weekly meetings.

### Male singers sought

The Mendelssohn Club male chorus of Albany has scheduled its first rehearsal for Sept. 5, at 7:30 p.m. at the United Fourth Presbyterian Church, Western Ave. at Rt. 85, Albany. The club will present classical, baroque, romantic, popular and show music at the winter and spring concerts.

Interested tenors and basses are invited to attend rehearsals each Wednesday in September and participate in auditions at the end of the month.

John Dorman of Delmar has been elected treasurer of the chorus for the 1984-85 season. Robert H. Randles of Slingerlands and George Plummer and David H. Robinson of Delmar have been elected to the board.

### Benefit sale set

The Albany Therapeutic Riding Center Inc. is planning a garage sale for Sept. 8 and 9 at the Old Slingerlands Playhouse, Rt. 443, Unionville. The sale will benefit the center, which provides disabled persons with a form of recreation that instills self confidence and a sense of accomplishment. For information contact Caroline Forsberg at 489-1306.

### Slingerlands spaghetti

The Community United Methodist Church, 1499 New Scotland Rd., Slingerlands, will serve a spaghetti dinner including a salad bar and homemade desserts on Sept. 15 from 5 to 7 p.m. Tickets will be sold at the door. People under 6 may attend free. For reservations call 439-1766.

**DELMAR AUTO RADIATOR**  
439-0311 **RADIATORS** M-F 8-5  
Cleaned — Repaired — Re-cord  
Expert Service  
New radiators available—drive-in service  
**FREE DIAGNOSIS**  
**AND ESTIMATE**  
Same day service—all makes and models  
Wholesale pickup & delivery  
300 Delaware Ave. Rear of Verardi's Automotive Delmar

**Professional Chimney Sweeping Service**

THE TRI-VILLAGE CHIMNEY SWEEP

Fully Insured  
Free Estimates  
**439-0457**  
Richard Many, Prop.

**"This is for you Grandpa"**

**FREE child's safety I.D. CARD**  
with 10.95 package  
one 8x10, three 5x7's  
and twelve wallets

• 95¢ deposit applied to portrait purchase. • Package from standard pose on customer pre-selected background. (Old Masters or Scenic) • Limit one special per child. • \$1.00 for each additional subject. • Age limit 0-12. I.D. CARD CONTAINS space for recent photo, important information and a fingerprint kit.  
Offer valid through September 29, 1984.

**BOSTON STORE**  
PORTRAIT STUDIO

Mohawk Mall  
460 Balltown Road  
Niskayuna

Latham Circle Mall  
800-126 New Loudon Road  
Latham

STORE HOURS: Sunday 12:00 n - 4:30 p.m.,  
Monday - Saturday 10:00 a.m. - 9:00 p.m.

**KNOX**  
INSURANCE  
AGENCY  
SINCE 1906

**INSURANCE SPECIALIST**

<b>BUSINESS</b>	<b>PERSONAL</b>
• Business Owners	• Auto
• Landlord Packages	• Home
• Bonding	• Renters
• Fire & Liability	• Recreational Vehicles
• Package Policies	• Life
• Group Life	

**INSTANT PHONE QUOTES**  
**489-8359**

Paul Knox, III  
55 Colvin Avenue  
Albany, N.Y. 12206



# RIGHT

Michael Connery, Electrician, IBEW 724

"The completion of Nine Mile Two is extremely important in my trade. It's important to the State of New York. You just can't get three-quarters of the way through a project and then say you're going to stop it. You have to complete it. It's important to us... it's jobs for me and the brothers of the local... it's jobs in the future for people that are going to run and maintain it... it's power for all kinds of jobs in New York State."

## NINE MILE TWO

The **RIGHT** Investment

From the co-owners of Nine Mile Two



Mr. and Mrs. Gabriel F. Deyo III

## Patricia Meany is bride

Patricia Elizabeth Meany, daughter of Mr. and Mrs. John B. Meany of Delmar, and Gabriel Francis Deyo III, son of Mrs. Winifred Deyo and the late Gabriel F. Deyo of Albany, were

married June 30 at the Chapel of Our Lady of Mercy, Albany.

Eileen M. Lombardo was matron of honor for her sister, Kathleen L. Meany, sister of the bride, and Alicia E. Ferrari, sister of the groom, were bridesmaids. Edward Carey was best man, and Jack Dougherty and Edward Coyne were ushers.

The bride, a graduate of Bethlehem Central High School, Maria College and Russell Sage College, is employed as a dietetic technician at St. Peter's Hospital. The groom, a graduate of Vincentian Institute and Siena College, is an auditor with the office of the state comptroller.

After a wedding trip to Europe, the couple plans to reside in Delmar.

## Trip planned

The Albany Area Retired Teachers Association is sponsoring a bus trip to New York City Wednesday, Sept. 12. For information call 439-3339.

## Correction

The second-to-last paragraph of the new state acid rain law in last week's *Spotlight* had an extra "not" that changed its meaning. The paragraph should have read:

"A few years may pass before the final outcome is known. About 70 to 80 percent of New York's acid rain precipitation is the result of out-of-state emissions. If New York's goal of pressuring the federal government is not realized, and even if the state does fully implement its own law unilaterally, then the benefit on the state's sensitive areas could be quite small."

A typographical error in last week's *Spotlight* inflated the price of a new speaker system being purchased for the Bethlehem Town Hall auditorium. The correct amount being allocated to the new system is \$2,000.

## Receptions held for 2

Receptions are being planned for the new principal of the Clarksville and Elsmere elementary schools. Mrs. Cheryl MacCulloch and Mrs. Dorothy Whitney began their duties as principals of the two schools over the summer.

The reception for Mrs. MacCulloch is being sponsored by the Board of Education at the Clarksville school on Monday, Sept. 10, at 7 p.m. Mrs. MacCulloch has been with the Bethlehem district for 14 years. She was an administrative intern for the 1982-83 school year, and assistant principal in Niskayuna for the past school year. Prior to those appointments she taught mathematics and science at the middle school.

Mrs. MacCulloch has a bachelor's degree in education from SUNY at Oswego and a master's degree in curriculum and instruction from SUNY at Albany. She is working toward a doctorate at SUNY/Albany. She will be a half-time principal and half-time kindergarten teacher. She replaces Mrs. Whitney, who transferred to the Elsmere school where she will be a full-time principal.

Elsmere School Community Organization (ESCO) is inviting people to a reception for Mrs. Whitney at the Elsmere school on Tuesday, Sept. 11, at 7 p.m. Mrs. Whitney has spent the past seven years with the school district in the dual role at the Clarksville Elementary school. Prior to that she was a reading specialist with the district and had taught at other area schools. Mrs. Whitney has a BA in psychology from Russell Sage, an MA in reading from the College of Saint Rose, and she has done additional work in administration at SUNY/Albany.

Parents and friends are invited to both receptions.



Mr. and Mrs. Charles J. Haslam

## Helen Tompkins wed

Helen M. Tompkins, daughter of Herbert and Helen Tompkins of Ferris Bush, and Charles James Haslam, son of Charles and Pearl Haslam of Nassau, were married Aug. 25 at Community United Methodist Church, Slingerlands.

The bride, a graduate of RCS High School, is a waitress at Tollgate Restaurant, Slingerlands. The groom, a graduate of Bethlehem Central High School and Syracuse University, is the

owner of Haslam Tree Service.

Catherine B. Tompkins was maid of honor for her sister. Alice Fuller, Michelle Rivers, cousin of the bride, Nancy Cole, sister of the groom, and Helen C. Tompkins, niece of the bride, were bridesmaids. Robert Roche was best man, and ushers were David Veltman, David Houghtaling, Herbert Tompkins, Jr., brother of the bride, and Christopher Hungerford, nephew of the groom.

Show Your Care In A  
Grand Way On  
Grandparents' Day  
September 9th

Teleflora

Grandflower

Your Florist  
In Glenmont  
436-7979

## PLANNING YOUR WEDDING

### Bridal Registry

Village Shop, Delaware Plaza, 439-1823. FREE GIFT for registering.

### Florist

Flower Girl Florist When It Has To Be Special! 239 Delaware Ave. 439-0971.

Danker Florist. Two great locations. Cor. of Allen & Central 489-5461 M-Sat. 8:30-5:30. Stuyvesant Plaza 438-2202. M-Sat. 9-9, Sun. 12-5. All New Silk and Traditional Fresh Flower Bouquets.

Valinda's Delmar Florist 439-7726. Wedding Gazebos available. Specializing in Bridal Dolls.

### Invitations

Newsgraphics Printers 125 Adams St. 439-5363. Wedding & Bar Mitzvah Social Announcements.

### Invitations

Wedding Invitations Announcements Personalized Accessories Johnson Stal. 439-8166.

### PAPER MILL

Delaware Plaza 439-8123-Wedding Invitations-Writing-Paper-Announcements. Your Custom Order.

### Jewelers

Harry L. Brown Jewelers & Thistle Gift Shop. 439-2718. Quality Rings. Full Bridal Registry.

### Photography

Richard L. Baldwin Photography, Glenmont Weddings, Portraits, Children, Groups. 439-1144.

### Receptions

Normanside Country Club, 439-5362. Wedding and Engagement Parties.

Weddings up to 325. New Wedding Package. Discount room rates. Quality Inn Hotel, Albany, 438-8431.

### Rental Equipment

A to Z Rental, Everett Rd., Albany 489-7418. Canopies, Tables, Chairs, Glasses, China, Silverware.

### Wedding Cake

Annie's Bake Shop 5 South Main 765-2603.

### Fantasy Food

We cater to your whim. 861-5328



For that special day and the preparations which are so necessary to make it a memorable one, please, consult the following advertisers.



## COMMUNITY CORNER

### Join the Net Set

The Bethlehem Tennis Association will hold its fall tournament Sept. 7 to 9 and Sept. 14 to 16 at the Bethlehem Central middle school courts. Tennis enthusiasts are sure to improve their own games by watching talented area players compete. Men's B Singles will be held Friday, Sept. 7, at 5 p.m. A full day of tennis on Saturday, Sept. 8, will begin with Women's B Singles at 9 a.m. See you there!



**Blue Cross**  
of Northeastern New York, Inc.

TENT SALE

4 EXCITING DAYS

TENT SALE  
AT YOUR AREA

Thurs. & Fri.  
Sept. 6th & 7th - 9 a.m. - 10 p.m.  
Sat., Sept. 8th - 9 a.m. - 5 p.m.  
Sun., Sept. 9th - Noon - 5 p.m.

TENT SALE

GETTING THERE IS HALF THE FUN

CHRYSLER PLYMOUTH DEALERS SHOWROOM

LASERS  
COLTS  
VOYAGERS  
NEW YORKERS  
5th AVENUES

CLEARANCE EXPLOSION  
OF  
GREAT YEAR END DEALS

RELIANT K'S  
HORIZON  
TURISMO  
LE BARON'S  
"E" CLASS

ARMORY  
Central at Colvin Ave.  
ALBANY  
482-3381

GOLDSTEIN'S  
Route 9  
LATHAM  
785-4156

IZZO'S  
Park & Central  
MECHANICVILLE  
664-7391

JIM SCHOLTZ'S  
1016 State St.  
SCHENECTADY  
381-9500

MARSHALL'S  
Route 9W  
RAVENA  
765-6161

EVERGREEN  
Route 7  
TROY  
279-3411

DRAWING AT EACH DEALERSHIP FOR A "VCR"

IMMEDIATE DELIVERY

OVER  
800 CARS  
BREAK THRU PRICING

ON THE SPOT APPRAISALS FOR TRADE INS

070484  
Bethlehem Public  
Library  
451 Delaware Avenue  
Delmar, NY 12054



DO NOT CIRCULATE  
BETHLEHEM PUBLIC LIBRARY

DO NOT CIRCULATE  
**THE SPOTLIGHT**

Bethlehem Public Library

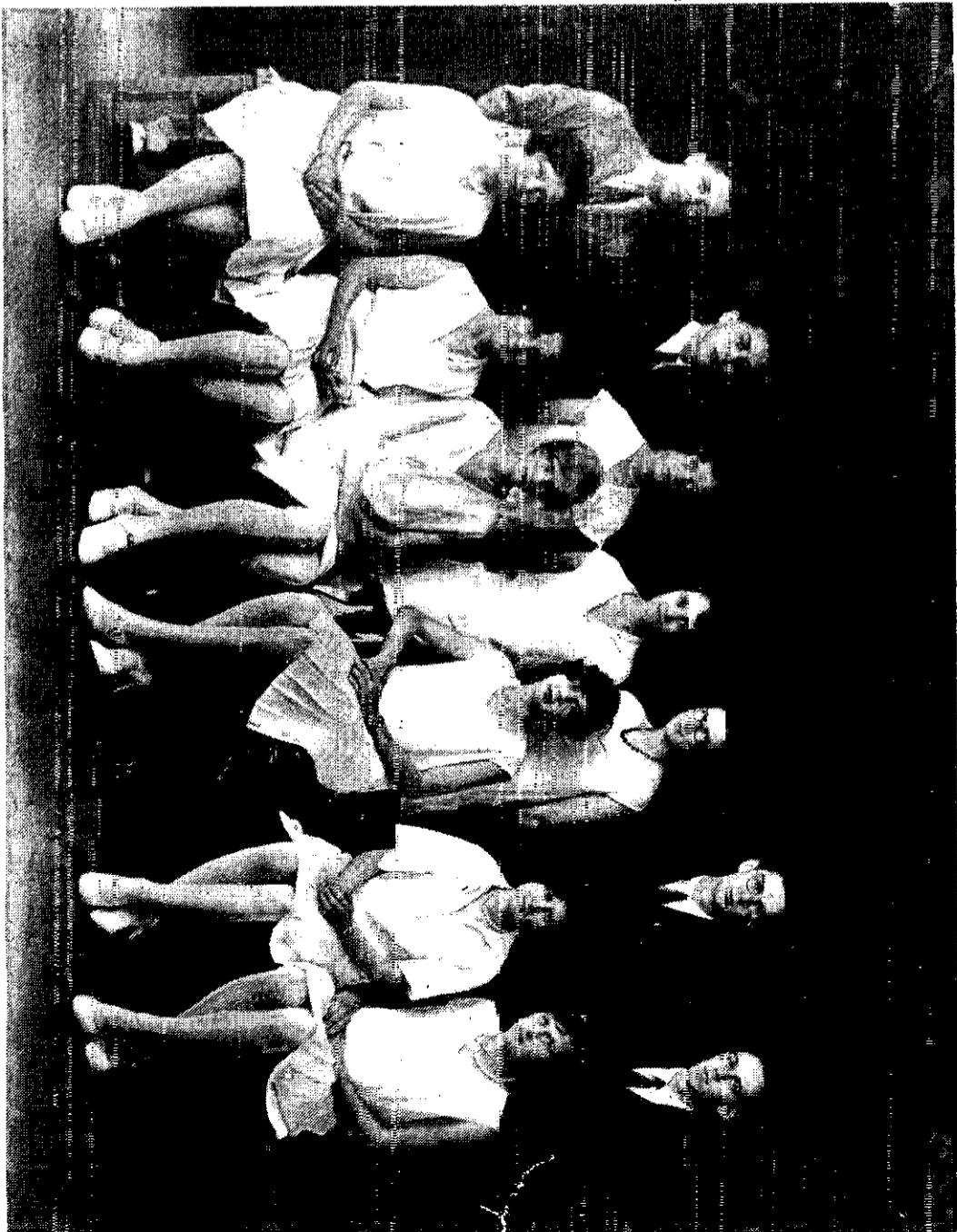
September 5, 1984

25c

The weekly newspaper serving the towns of Bethlehem and New Scotland

Duplex hearing may be a dilly

Page 1



Delmar High's first class

Page 16